



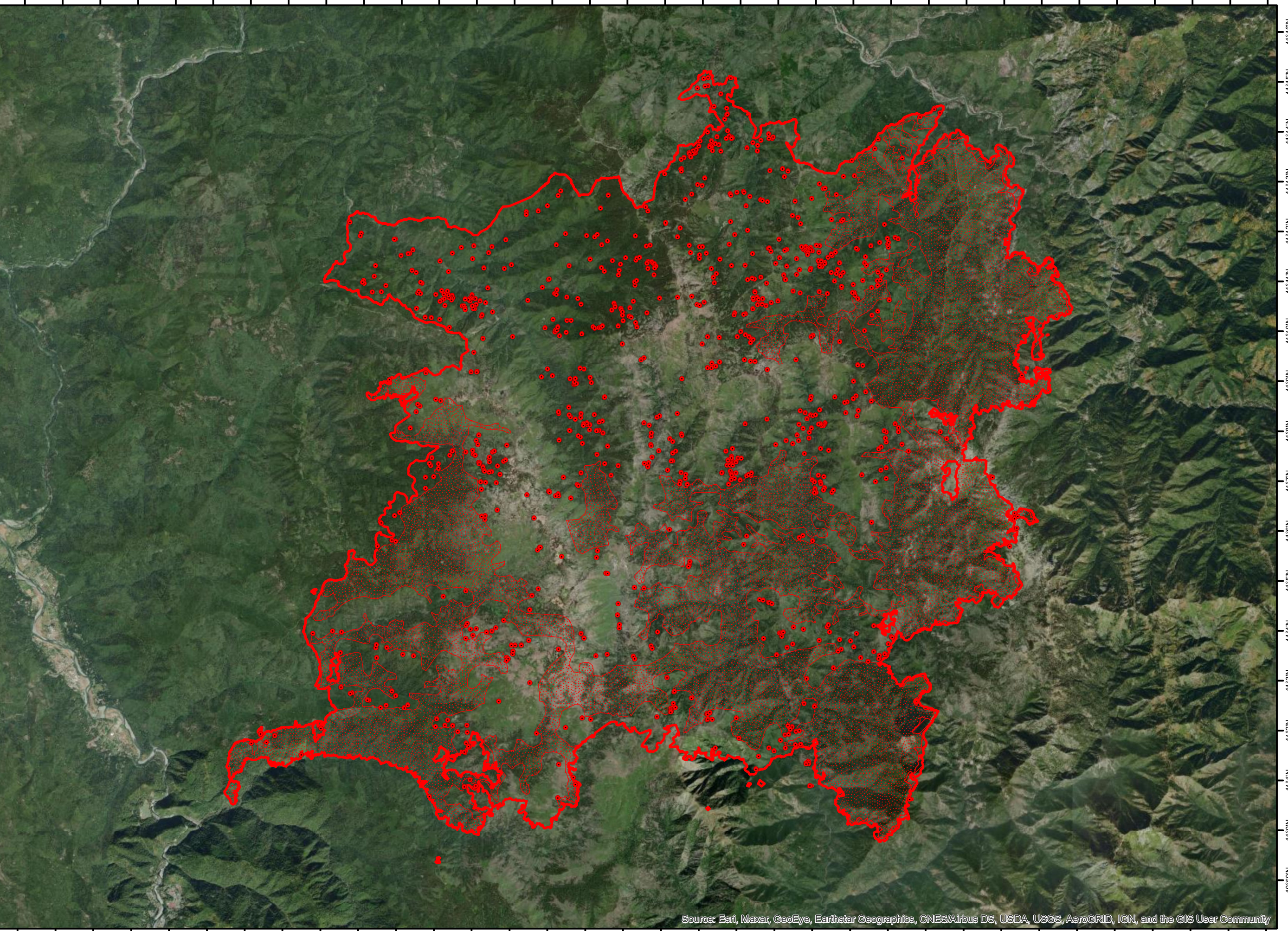
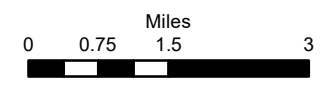
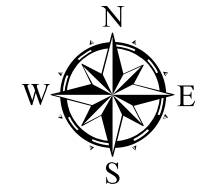


123°42'W 123°41'W 123°40'W 123°39'W 123°38'W 123°37'W 123°36'W 123°35'W 123°34'W 123°33'W 123°32'W 123°31'W 123°30'W 123°29'W 123°28'W 123°27'W 123°26'W 123°25'W 123°24'W 123°23'W 123°22'W 123°21'W 123°20'W 123°19'W 123°18'W 123°17'W 123°16'W 123°15'W 123°14'W 123°13'W 123°12'W 123°11'W 123°10'W 123°9'W

RED SALMON CA-SRF-000656 Infrared Map 1:130,000

-  Heat Perimeter
 -  Intense Heat Areas
 -  Scattered Heat Areas
 -  Isolated Heat Sources
- NAD 1983 UTM Zone 10N



IR Interpreter: Brian Monroe
 IR interpreted acres: 129,074
 Date: 10/02/2020
 Scan Date: 10/02/2020
 Scan Time: 0000 hrs PDT

Source: Esri, Maxar, GeoEye, Earthstar Geographics, CNES/Airbus DS, USDA, USGS, AeroGRID, IGN, and the GIS User Community

123°42'W 123°41'W 123°40'W 123°39'W 123°38'W 123°37'W 123°36'W 123°35'W 123°34'W 123°33'W 123°32'W 123°31'W 123°30'W 123°29'W 123°28'W 123°27'W 123°26'W 123°25'W 123°24'W 123°23'W 123°22'W 123°21'W 123°20'W 123°19'W 123°18'W 123°17'W 123°16'W 123°15'W 123°14'W 123°13'W 123°12'W 123°11'W 123°10'W 123°9'W

41°16'N
41°15'N
41°14'N
41°13'N
41°12'N
41°11'N
41°10'N
41°9'N
41°8'N
41°7'N
41°6'N
41°5'N
41°4'N
41°3'N
41°2'N
41°1'N
41°0'N
40°59'N