



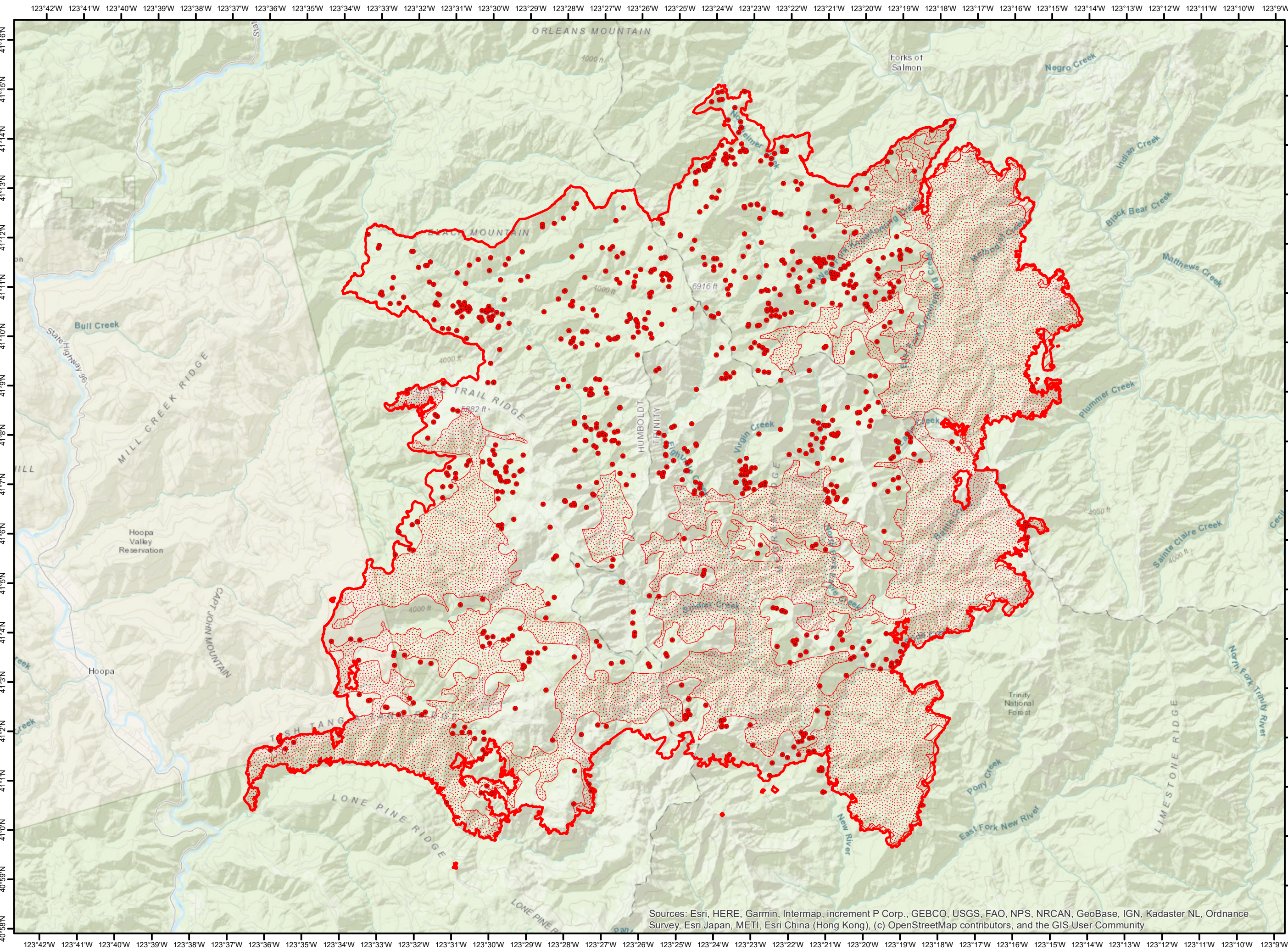
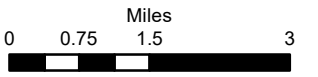
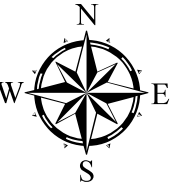


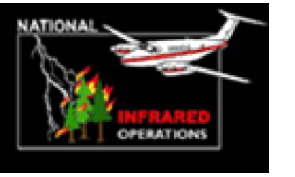
# RED SALMON CA-SRF-000656 Infrared Map

1:130,000

-  Heat Perimeter
  -  Intense Heat Areas
  -  Scattered Heat Areas
  -  Isolated Heat Sources
- NAD 1983 UTM Zone 10N



Sources: Esri, HERE, Garmin, Intermap, increment P Corp., GEBCO, USGS, FAO, NPS, NRCAN, GeoBase, IGN, Kadaster NL, Ordnance Survey, Esri Japan, METI, Esri China (Hong Kong), (c) OpenStreetMap contributors, and the GIS User Community



IR Interpreter: Brian Monroe  
IR interpreted acres: 129,074  
Date: 10/02/2020  
Scan Date: 10/02/2020  
Scan Time: 0000 hrs PDT