



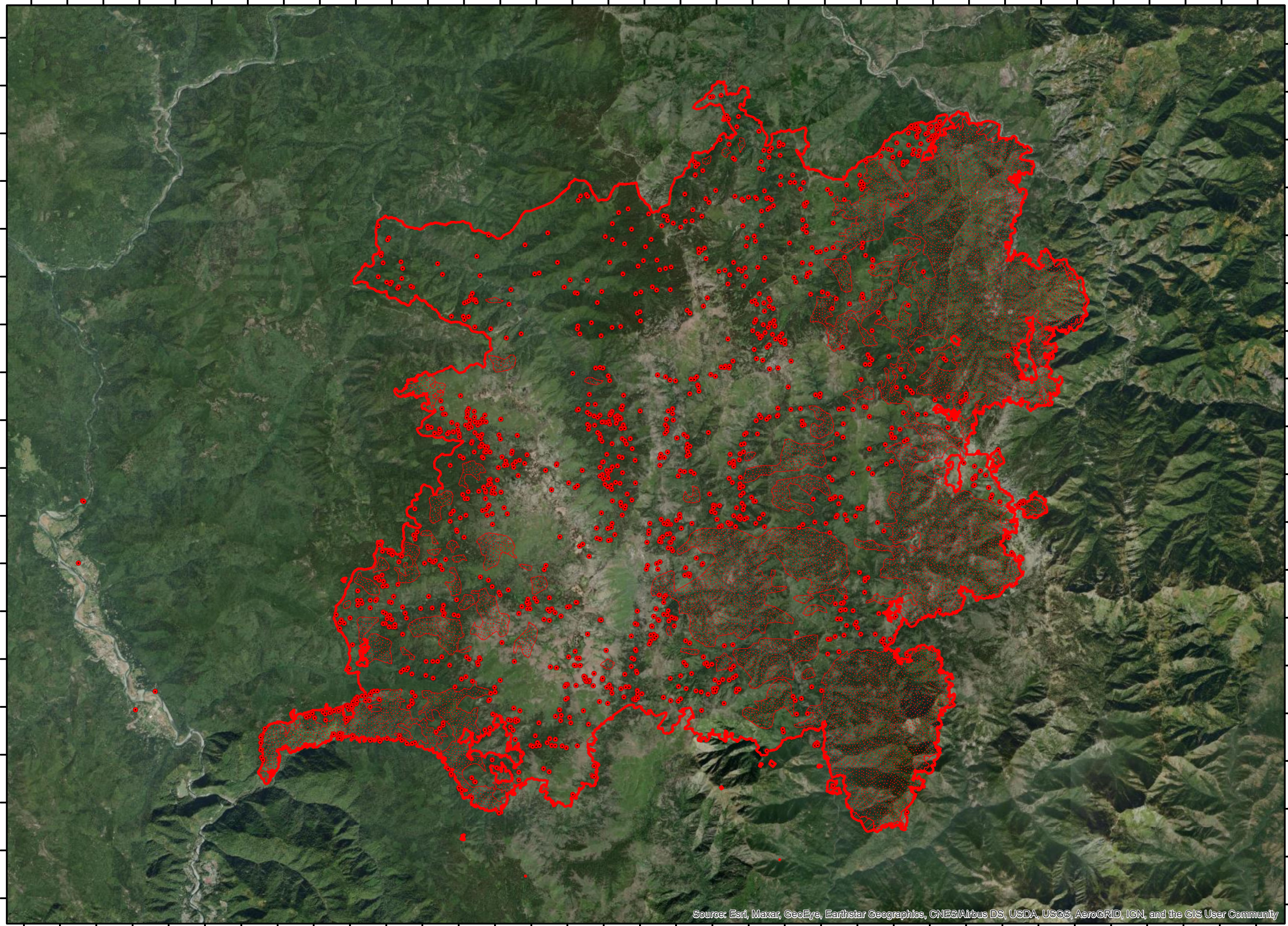
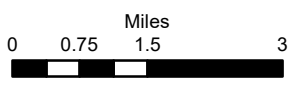
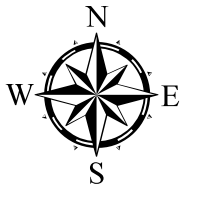


123°43'W 123°42'W 123°41'W 123°40'W 123°39'W 123°38'W 123°37'W 123°36'W 123°35'W 123°34'W 123°33'W 123°32'W 123°31'W 123°30'W 123°29'W 123°28'W 123°27'W 123°26'W 123°25'W 123°24'W 123°23'W 123°22'W 123°21'W 123°20'W 123°19'W 123°18'W 123°17'W 123°16'W 123°15'W 123°14'W 123°13'W 123°12'W 123°11'W 123°10'W 123°9'W

# RED SALMON CA-SRF-000656 Infrared Map

1:135,000

-  Heat Perimeter
  -  Intense Heat Areas
  -  Scattered Heat Areas
  -  Isolated Heat Sources
- NAD 1983 UTM Zone 10N



IR Interpreter: Brian Monroe  
IR interpreted acres: 132,452  
Date: 10/05/2020  
Scan Date: 10/04/2020  
Scan Time: 2200 hrs PDT

Source: Esri, Maxar, GeoEye, Earthstar Geographics, CNES/Airbus DS, USDA, USGS, AeroGRID, IGN, and the GIS User Community

123°43'W 123°42'W 123°41'W 123°40'W 123°39'W 123°38'W 123°37'W 123°36'W 123°35'W 123°34'W 123°33'W 123°32'W 123°31'W 123°30'W 123°29'W 123°28'W 123°27'W 123°26'W 123°25'W 123°24'W 123°23'W 123°22'W 123°21'W 123°20'W 123°19'W 123°18'W 123°17'W 123°16'W 123°15'W 123°14'W 123°13'W 123°12'W 123°11'W 123°10'W 123°9'W

41°16'N  
41°15'N  
41°14'N  
41°13'N  
41°12'N  
41°11'N  
41°10'N  
41°9'N  
41°8'N  
41°7'N  
41°6'N  
41°5'N  
41°4'N  
41°3'N  
41°2'N  
41°1'N  
41°0'N  
40°59'N  
40°58'N