



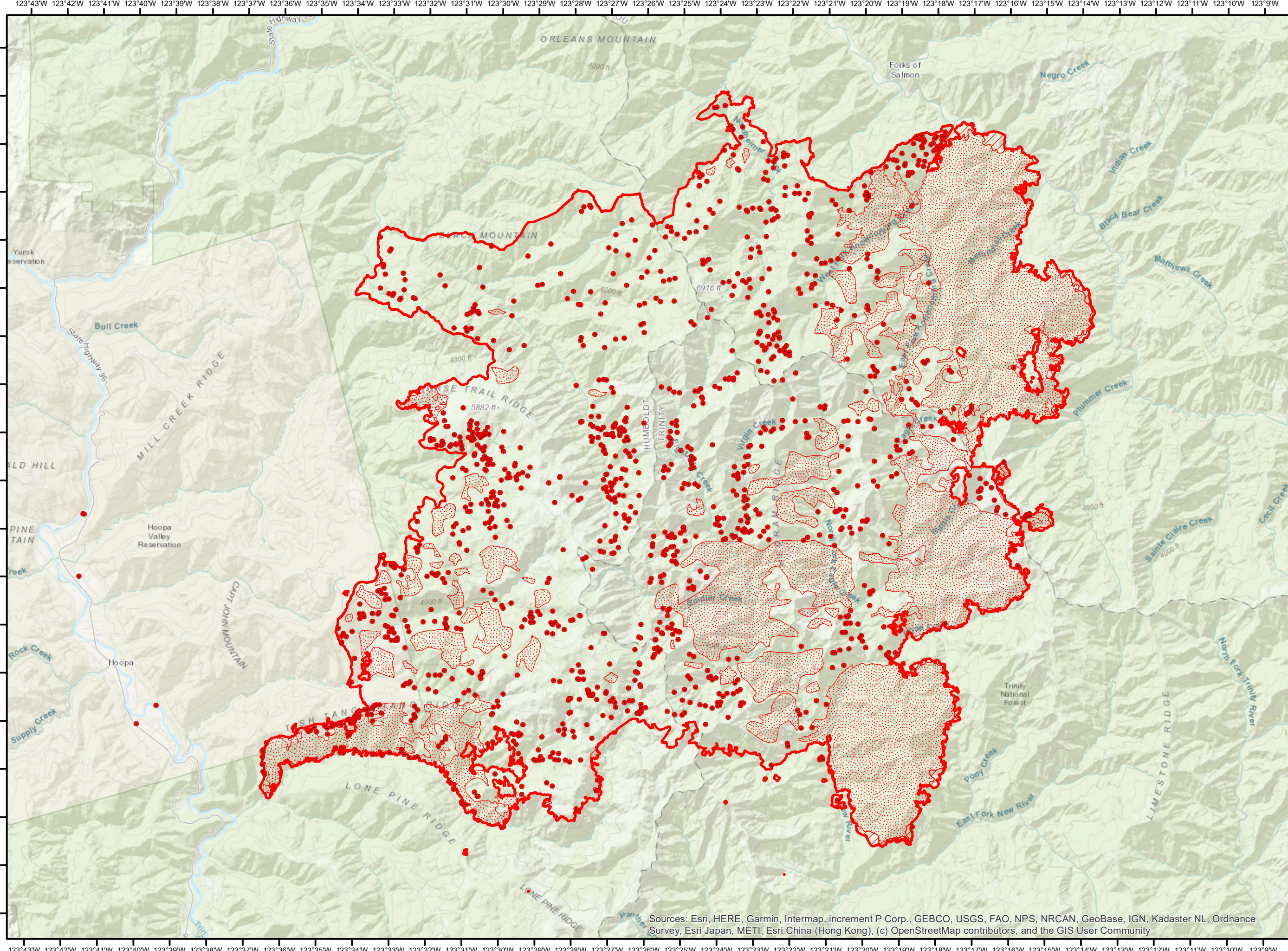
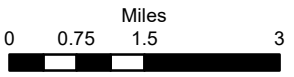
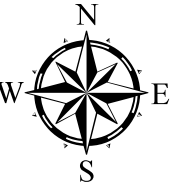


RED SALMON CA-SRF-000656 Infrared Map

1:135,000

-  Heat Perimeter
 -  Intense Heat Areas
 -  Scattered Heat Areas
 -  Isolated Heat Sources
- NAD 1983 UTM Zone 10N



Sources: Esri, HERE, Garmin, Intermap, increment P Corp., GEBCO, USGS, FAO, NPS, NRCAN, GeoBase, IGN, Kadaster NL, Ordnance Survey, Esri Japan, METI, Esri China (Hong Kong), (c) OpenStreetMap contributors, and the GIS User Community



IR Interpreter: Brian Monroe
IR interpreted acres: 132,452
Date: 10/05/2020
Scan Date: 10/04/2020
Scan Time: 2200 hrs PDT