



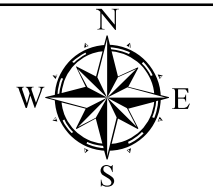


RED SALMON CA-SRF-000656 Infrared Heat Sources 1:137,000

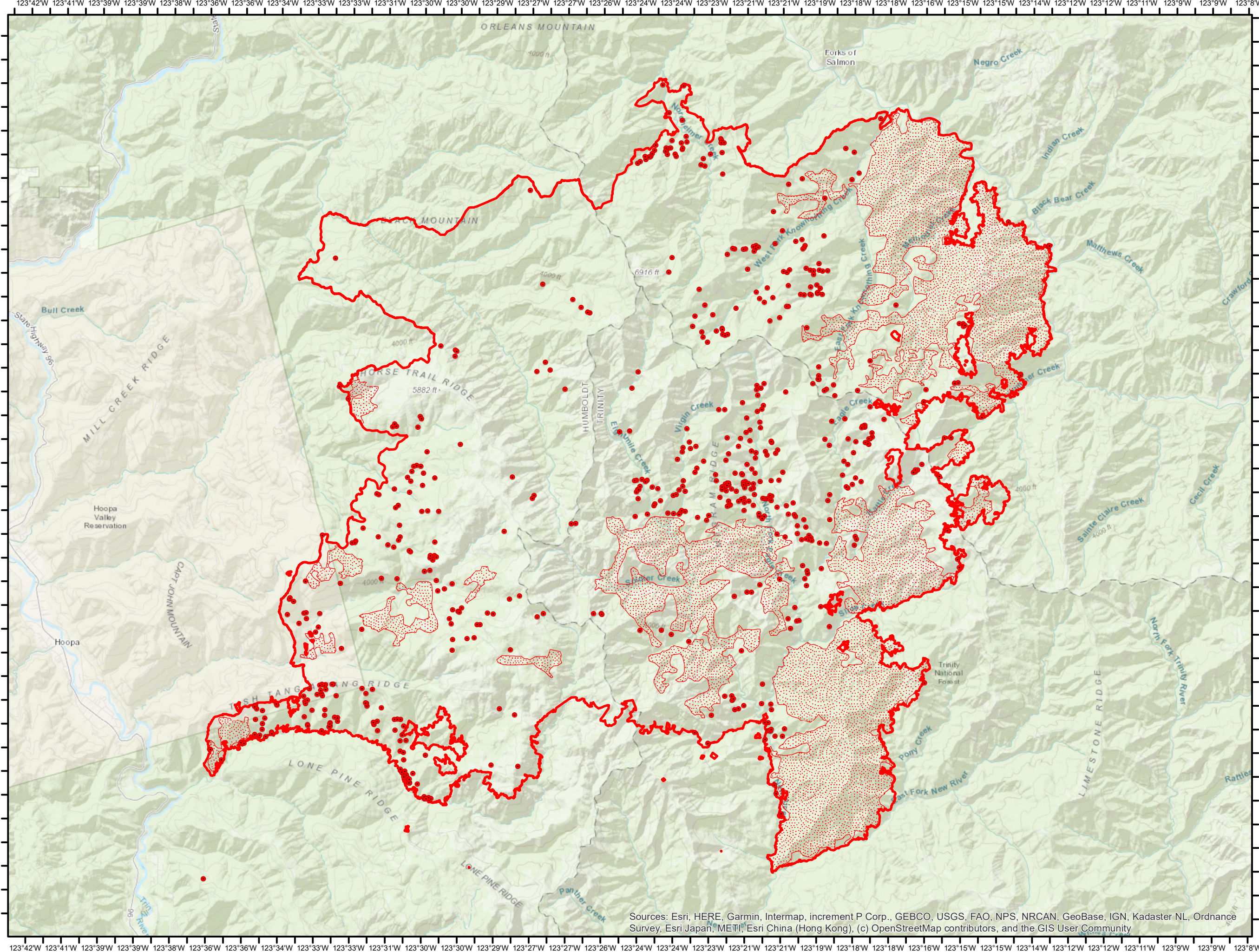
-  Heat Perimeter
 -  Intense Heat Areas
 -  Scattered Heat Areas
 -  Isolated Heat Sources
- NAD 1983 UTM Zone 10N



Notes:



IR Interpreter: Brian Monroe
 IR interpreted acres: 141,178
 Date: 10/11/2020
 Scan Date: 10/10/2020
 Scan Time: 2140 hrs PDT



Sources: Esri, HERE, Garmin, Intermap, increment P Corp., GEBCO, USGS, FAO, NPS, NRCAN, GeoBase, IGN, Kadaster NL, Ordnance Survey, Esri Japan, METI, Esri China (Hong Kong), (c) OpenStreetMap contributors, and the GIS User Community