

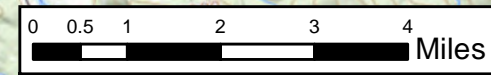
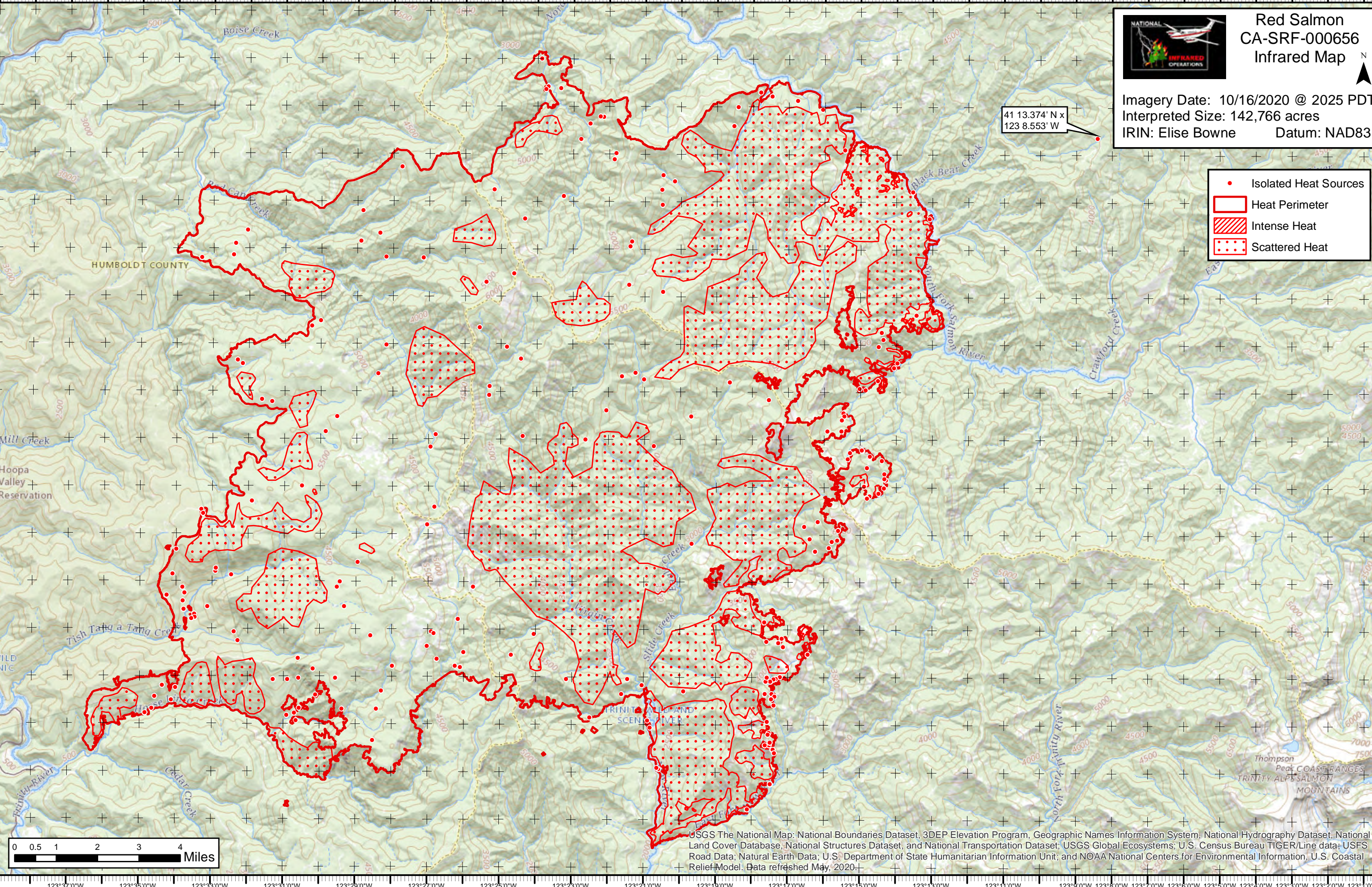
Red Salmon CA-SRF-000656 Infrared Map



Imagery Date: 10/16/2020 @ 2025 PDT
Interpreted Size: 142,766 acres
IRIN: Elise Bowne Datum: NAD83

41 13.374' N x
123 8.553' W

- Isolated Heat Sources
- Heat Perimeter
- Intense Heat
- Scattered Heat



USGS The National Map: National Boundaries Dataset, 3DEP Elevation Program, Geographic Names Information System, National Hydrography Dataset, National Land Cover Database, National Structures Dataset, and National Transportation Dataset; USGS Global Ecosystems; U.S. Census Bureau TIGER/Line data; USFS Road Data; Natural Earth Data; U.S. Department of State Humanitarian Information Unit; and NOAA National Centers for Environmental Information, U.S. Coastal Relief Model. Data refreshed May, 2020.