

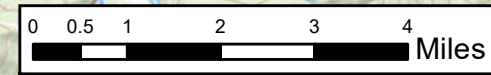
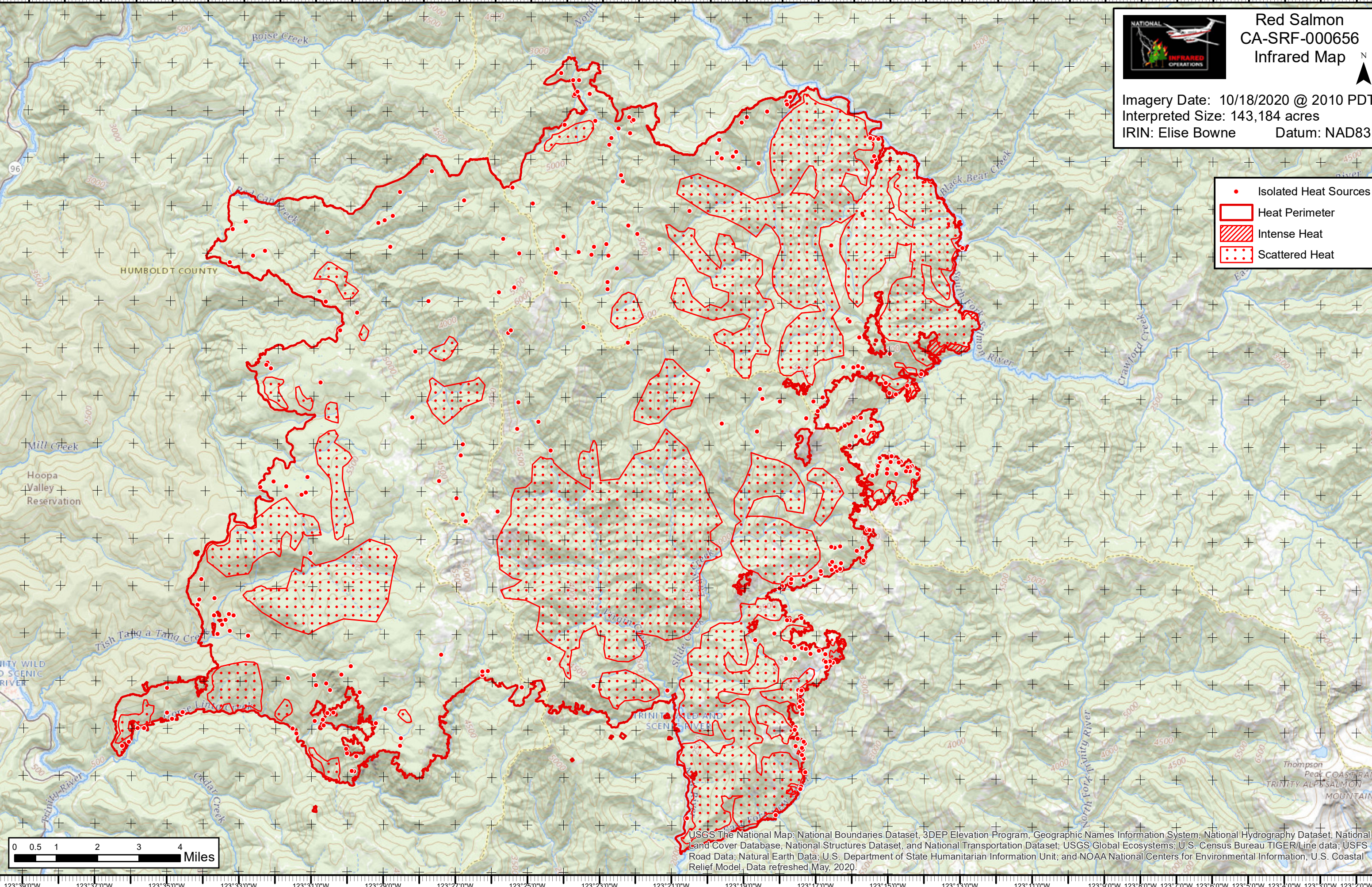


# Red Salmon CA-SRF-000656 Infrared Map



Imagery Date: 10/18/2020 @ 2010 PDT  
Interpreted Size: 143,184 acres  
IRIN: Elise Bowne Datum: NAD83

- Isolated Heat Sources
- Heat Perimeter
- Intense Heat
- Scattered Heat



USGS The National Map: National Boundaries Dataset, 3DEP Elevation Program, Geographic Names Information System, National Hydrography Dataset, National Land Cover Database, National Structures Dataset, and National Transportation Dataset; USGS Global Ecosystems; U.S. Census Bureau TIGER/Line data; USFS Road Data; Natural Earth Data; U.S. Department of State Humanitarian Information Unit; and NOAA National Centers for Environmental Information, U.S. Coastal Relief Model. Data refreshed May, 2020.