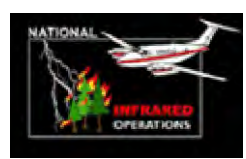


123°39'0"W 123°37'0"W 123°35'0"W 123°33'0"W 123°31'0"W 123°29'0"W 123°27'0"W 123°25'0"W 123°23'0"W 123°21'0"W 123°19'0"W 123°17'0"W 123°15'0"W 123°13'0"W 123°11'0"W 123°9'0"W 123°8'0"W 123°7'0"W 123°6'0"W 123°5'0"W 123°4'0"W 123°3'0"W 123°2'0"W

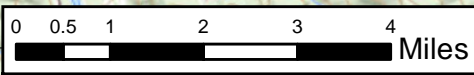
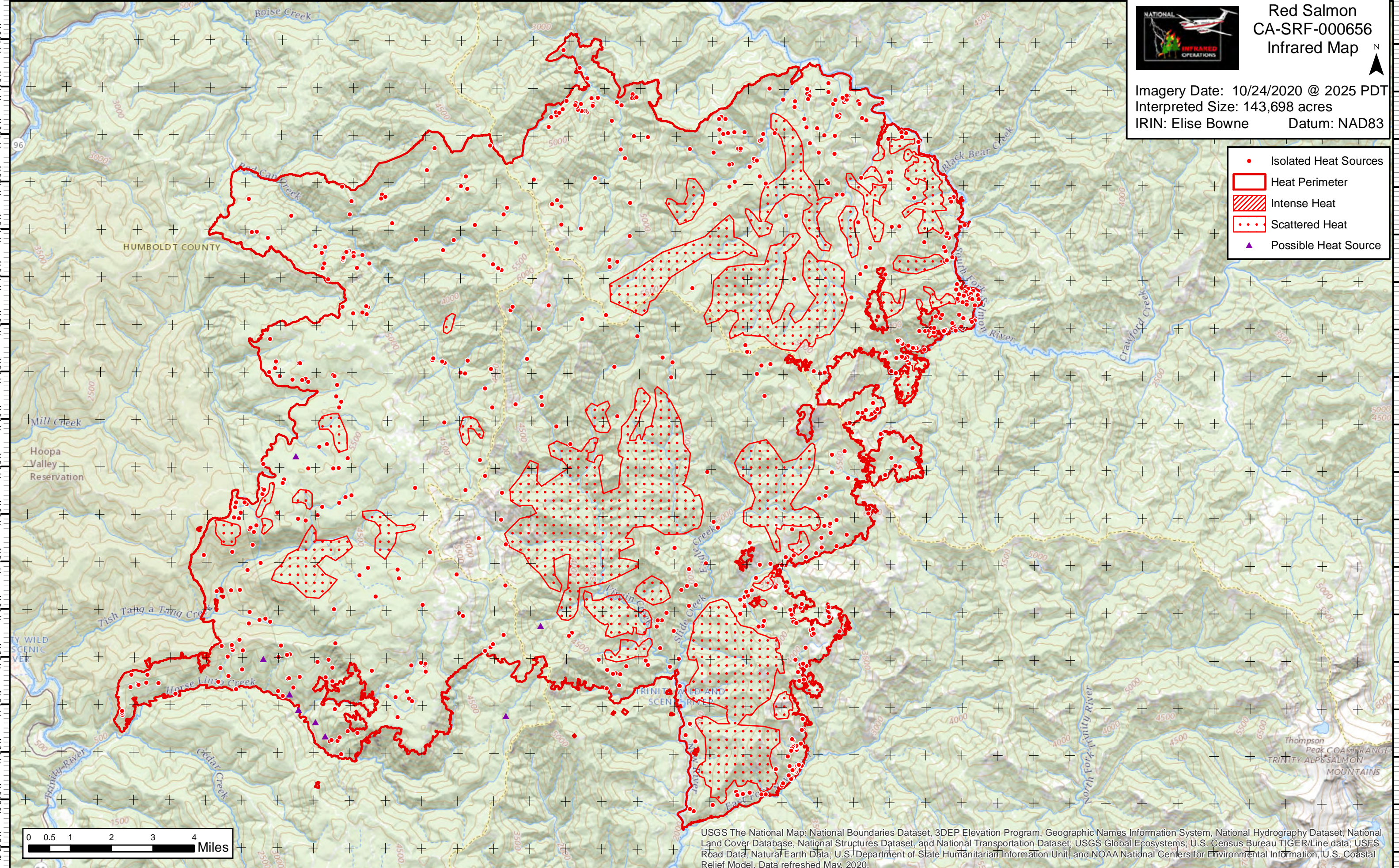


Red Salmon CA-SRF-000656 Infrared Map



Imagery Date: 10/24/2020 @ 2025 PDT
Interpreted Size: 143,698 acres
IRIN: Elise Bowne Datum: NAD83

- Isolated Heat Sources
- Heat Perimeter
- Intense Heat
- Scattered Heat
- ▲ Possible Heat Source



USGS The National Map: National Boundaries Dataset, 3DEP Elevation Program, Geographic Names Information System, National Hydrography Dataset, National Land Cover Database, National Structures Dataset, and National Transportation Dataset; USGS Global Ecosystems; U.S. Census Bureau TIGER/Line data; USFS Road Data; Natural Earth Data; U.S. Department of State Humanitarian Information Unit; and NOAA National Centers for Environmental Information, U.S. Coastal Relief Model. Data refreshed May, 2020.

123°39'0"W 123°37'0"W 123°35'0"W 123°33'0"W 123°31'0"W 123°29'0"W 123°27'0"W 123°25'0"W 123°23'0"W 123°21'0"W 123°19'0"W 123°17'0"W 123°15'0"W 123°13'0"W 123°11'0"W 123°9'0"W 123°8'0"W 123°7'0"W 123°6'0"W 123°5'0"W 123°4'0"W 123°3'0"W 123°2'0"W