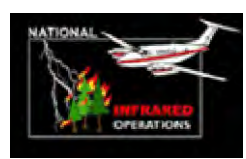


123°39'0"W 123°37'0"W 123°35'0"W 123°33'0"W 123°31'0"W 123°29'0"W 123°27'0"W 123°25'0"W 123°23'0"W 123°21'0"W 123°19'0"W 123°17'0"W 123°15'0"W 123°13'0"W 123°11'0"W 123°9'0"W 123°8'0"W 123°7'0"W 123°6'0"W 123°5'0"W 123°4'0"W 123°3'0"W 123°2'0"W

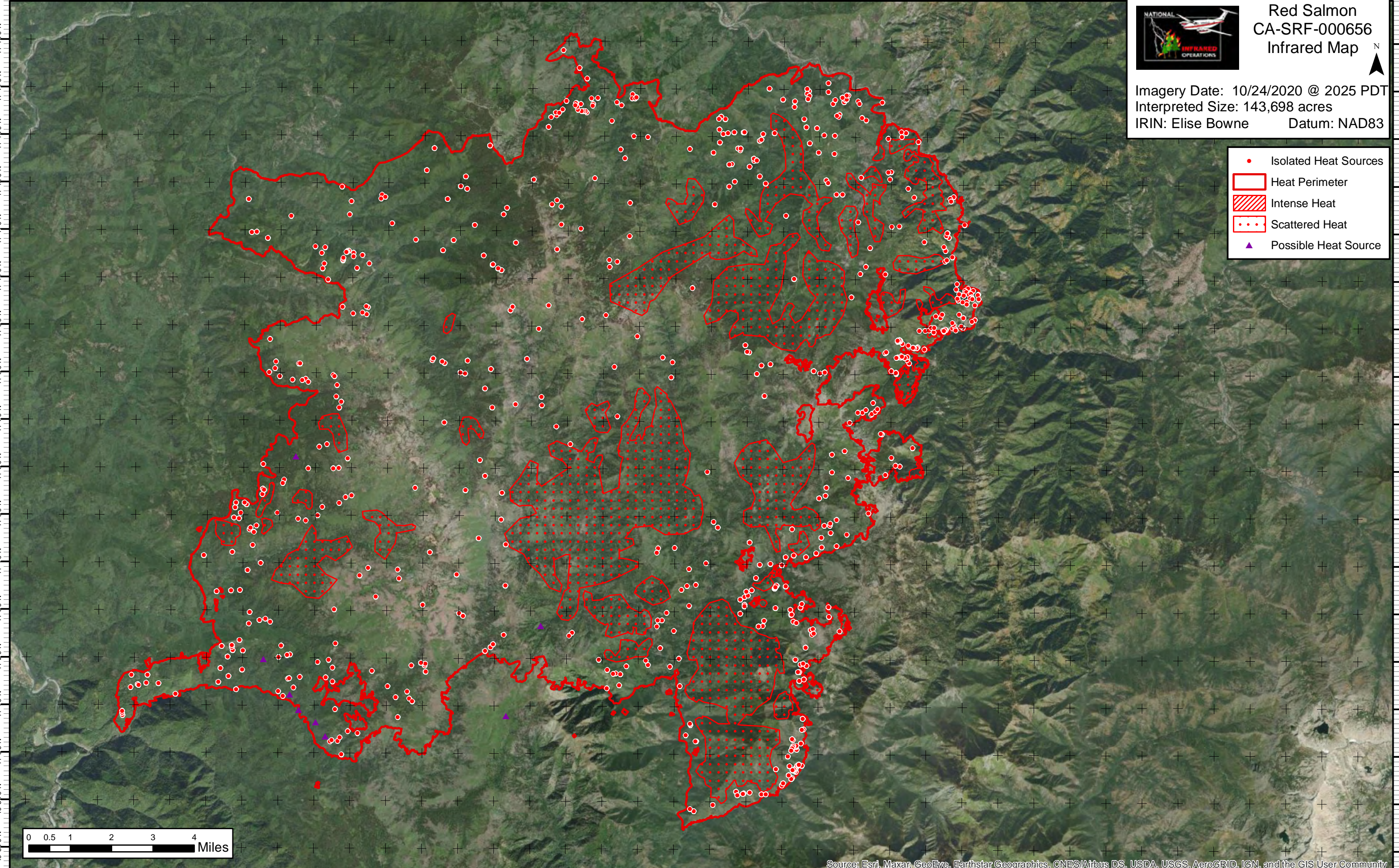


Red Salmon CA-SRF-000656 Infrared Map



Imagery Date: 10/24/2020 @ 2025 PDT
Interpreted Size: 143,698 acres
IRIN: Elise Bowne Datum: NAD83

- Isolated Heat Sources
- Heat Perimeter
- Intense Heat
- Scattered Heat
- ▲ Possible Heat Source



Source: Esri, Maxar, GeoEye, Earthstar Geographics, CNES/Airbus DS, USDA, USGS, AeroGRID, IGN, and the GIS User Community

123°39'0"W 123°37'0"W 123°35'0"W 123°33'0"W 123°31'0"W 123°29'0"W 123°27'0"W 123°25'0"W 123°23'0"W 123°21'0"W 123°19'0"W 123°17'0"W 123°15'0"W 123°13'0"W 123°11'0"W 123°9'0"W 123°8'0"W 123°7'0"W 123°6'0"W 123°5'0"W 123°4'0"W 123°3'0"W 123°2'0"W