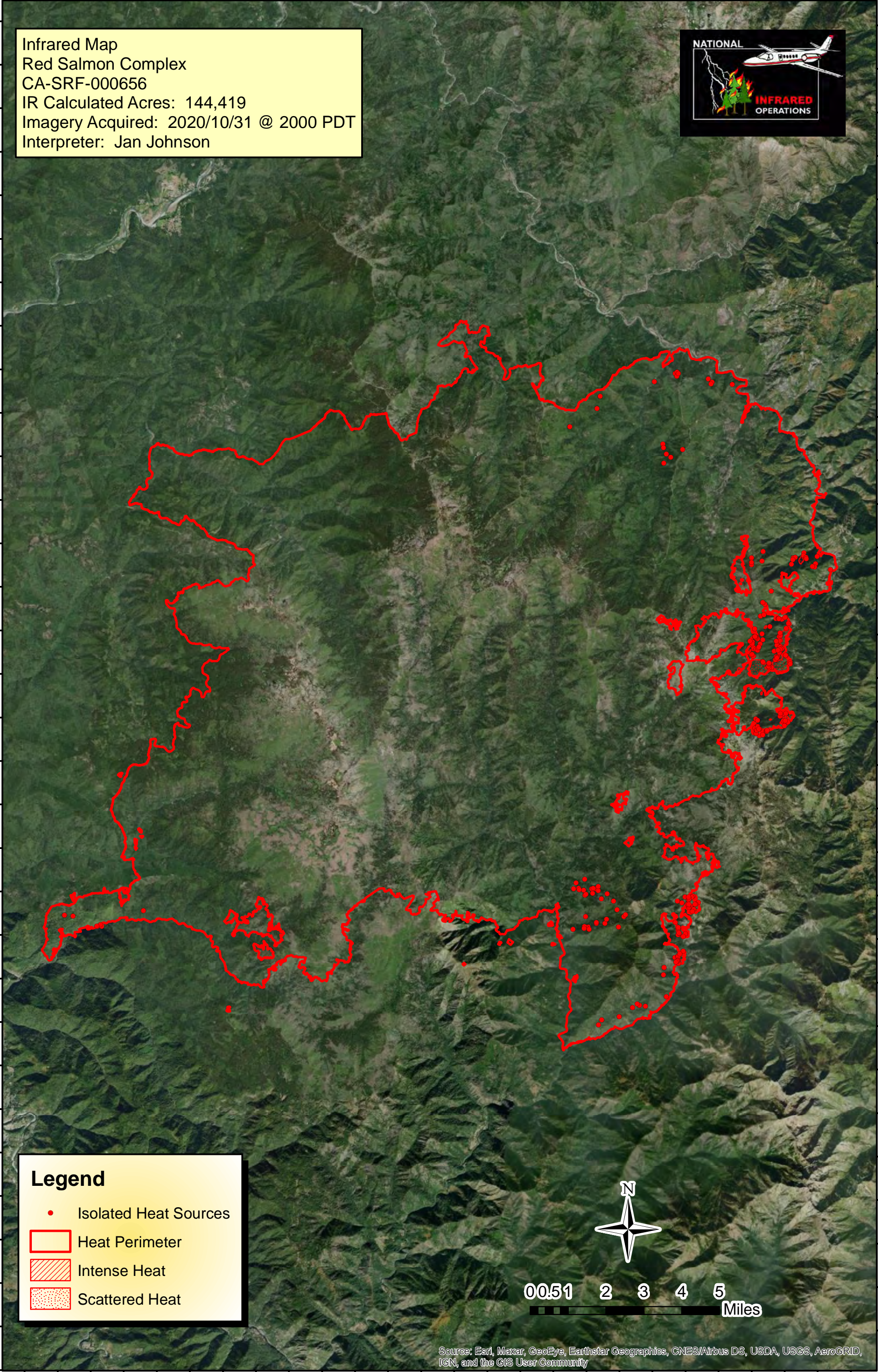


123°36'0"W 123°34'0"W 123°32'0"W 123°30'0"W 123°28'0"W 123°26'0"W 123°24'0"W 123°22'0"W 123°20'0"W 123°18'0"W 123°16'0"W 123°14'0"W 123°12'0"W

41°22'0"N
41°20'0"N
41°18'0"N
41°16'0"N
41°14'0"N
41°12'0"N
41°10'0"N
41°08'0"N
41°06'0"N
41°04'0"N
41°02'0"N
41°00'0"N
40°58'0"N
40°56'0"N
40°54'0"N
40°52'0"N

41°22'0"N
41°20'0"N
41°18'0"N
41°16'0"N
41°14'0"N
41°12'0"N
41°10'0"N
41°08'0"N
41°06'0"N
41°04'0"N
41°02'0"N
41°00'0"N
40°58'0"N
40°56'0"N
40°54'0"N
40°52'0"N

Infrared Map
Red Salmon Complex
CA-SRF-000656
IR Calculated Acres: 144,419
Imagery Acquired: 2020/10/31 @ 2000 PDT
Interpreter: Jan Johnson



Legend

- Isolated Heat Sources
- Heat Perimeter
- Intense Heat
- Scattered Heat



0 0.5 1 2 3 4 5
Miles

Source: Esri, Maxar, GeoEye, Earthstar Geographics, CNES/Airbus DS, USDA, USGS, AeroGRID, IGN, and the GIS User Community

123°36'0"W 123°34'0"W 123°32'0"W 123°30'0"W 123°28'0"W 123°26'0"W 123°24'0"W 123°22'0"W 123°20'0"W 123°18'0"W 123°16'0"W 123°14'0"W 123°12'0"W