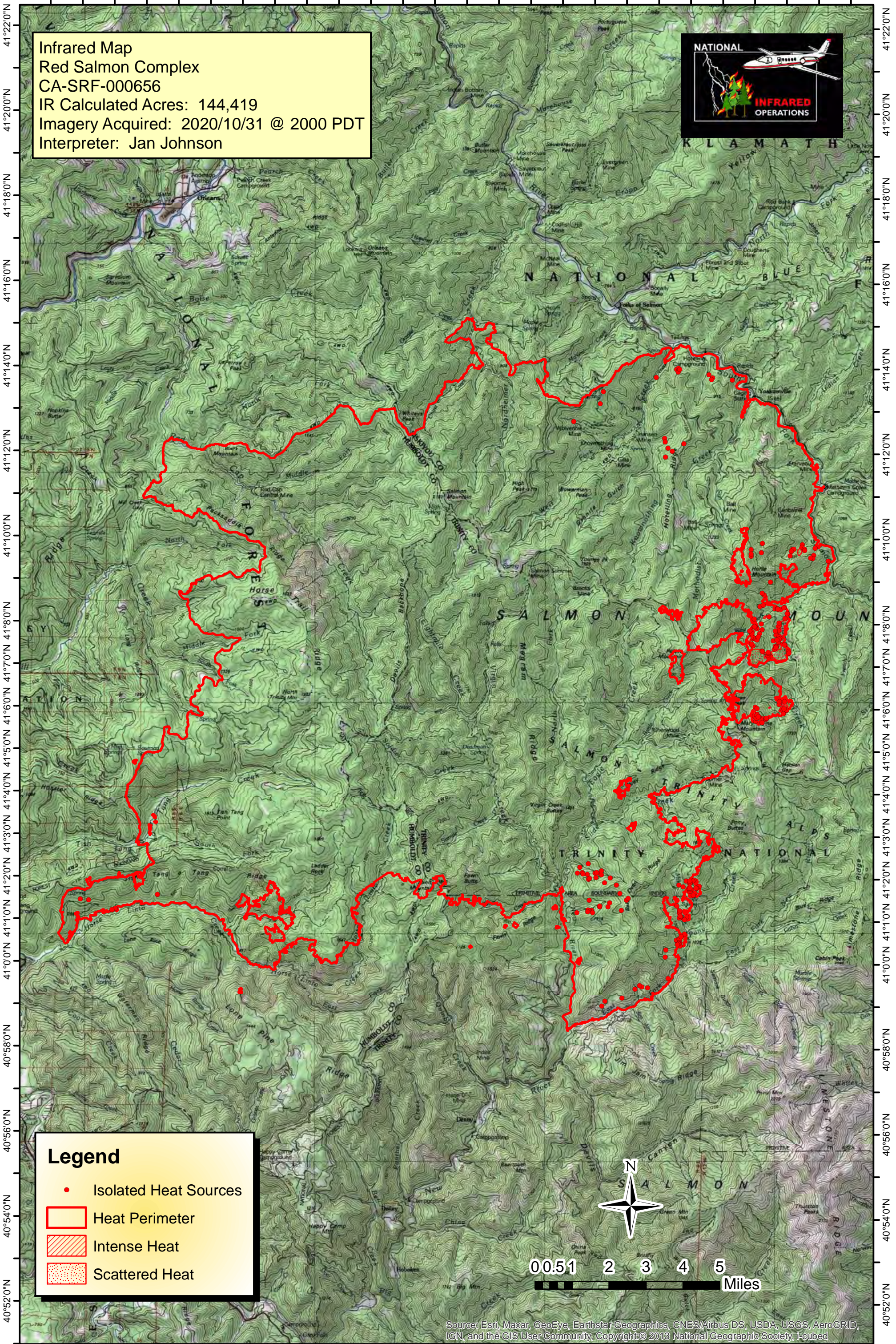


123°36'0"W 123°34'0"W 123°32'0"W 123°30'0"W 123°28'0"W 123°26'0"W 123°24'0"W 123°22'0"W 123°20'0"W 123°18'0"W 123°16'0"W 123°14'0"W 123°12'0"W



Infrared Map
Red Salmon Complex
CA-SRF-000656
IR Calculated Acres: 144,419
Imagery Acquired: 2020/10/31 @ 2000 PDT
Interpreter: Jan Johnson



Legend

- Isolated Heat Sources
- Heat Perimeter
- Intense Heat
- Scattered Heat



Source: Esri, Maxar, GeoEye, Earthstar Geographics, CNES/Airbus DS, USDA, USGS, AeroGRID, IGN, and the GIS User Community, Copyright © 2013 National Geographic Society, i-cubed

123°36'0"W 123°34'0"W 123°32'0"W 123°30'0"W 123°28'0"W 123°26'0"W 123°24'0"W 123°22'0"W 123°20'0"W 123°18'0"W 123°16'0"W 123°14'0"W 123°12'0"W