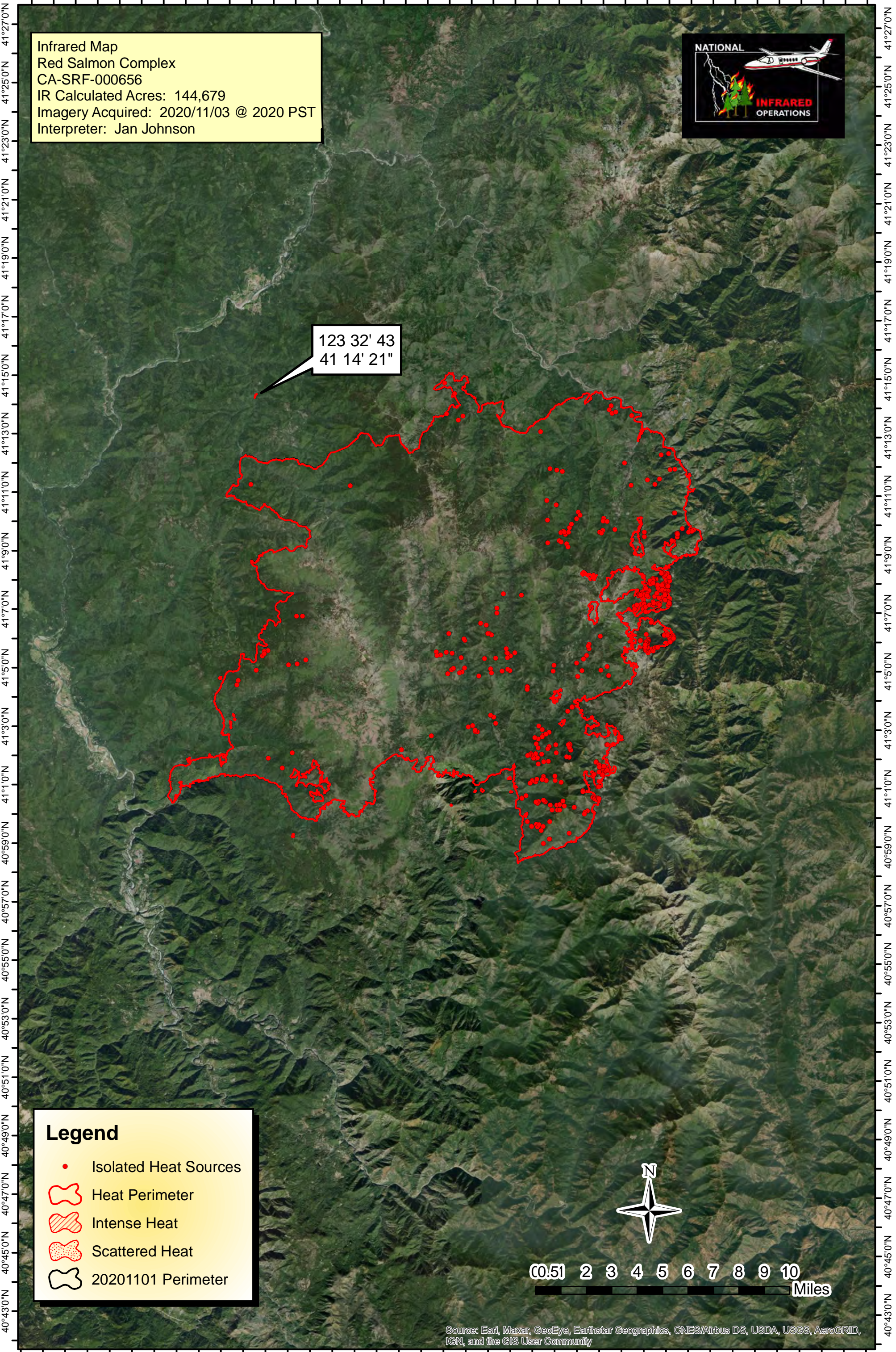


123°41'0"W 123°38'0"W 123°35'0"W 123°32'0"W 123°29'0"W 123°26'0"W 123°23'0"W 123°20'0"W 123°17'0"W 123°14'0"W 123°11'0"W 123°8'0"W 123°5'0"W



Infrared Map
Red Salmon Complex
CA-SRF-000656
IR Calculated Acres: 144,679
Imagery Acquired: 2020/11/03 @ 2020 PST
Interpreter: Jan Johnson



123 32' 43
41 14' 21"

Legend

- Isolated Heat Sources
- Heat Perimeter
- Intense Heat
- Scattered Heat
- 20201101 Perimeter



Source: Esri, Maxar, GeoEye, Earthstar Geographics, CNES/Airbus DS, USDA, USGS, AeroGRID, IGN, and the GIS User Community

123°41'0"W 123°38'0"W 123°35'0"W 123°32'0"W 123°29'0"W 123°26'0"W 123°23'0"W 123°20'0"W 123°17'0"W 123°14'0"W 123°11'0"W 123°8'0"W 123°5'0"W