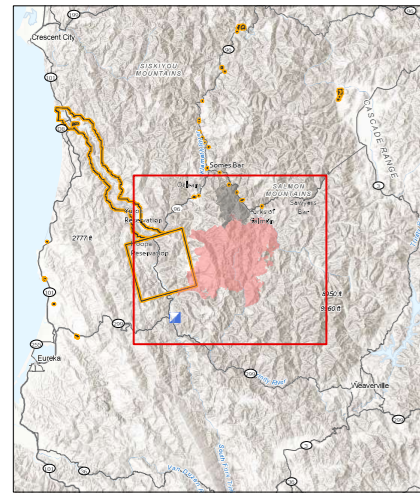


Public Information Map

Red Salmon Complex

CA-SRF-000656

October 27, 2020



Data Reference & Symbology

- Wildfire Perimeter
- National Forest Fire Area Closures
- Road Closures
- Uncontrolled Fire Edge
- Contained Line
- Butler Fire
- Incident Command Post
- Division Break

Portions of the National Forests are open for public use. Contact:
<https://www.fs.usda.gov/klamath>
 or
<https://www.fs.usda.gov/srnf>
 or
<https://www.fs.usda.gov/stnf>

