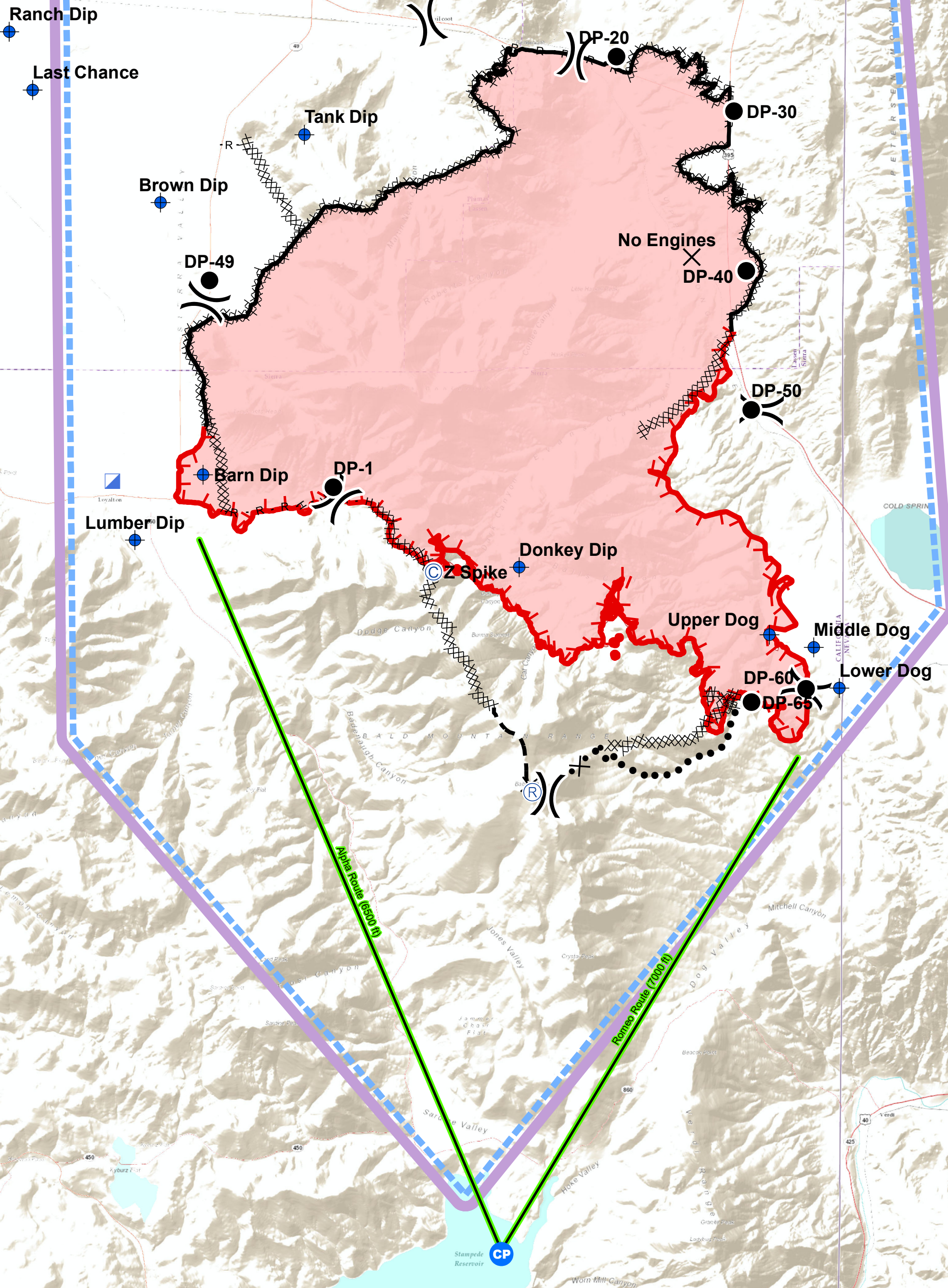
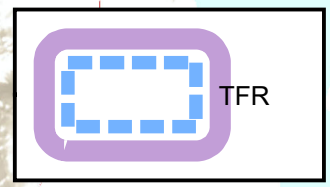
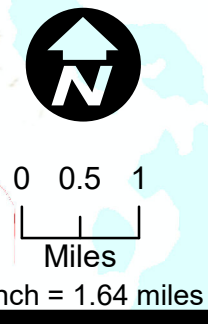


**Loyalton Fire
Air Operations
CA-TNF-001600
08/19/2020
WGS 84**



Label	Latitude	Longitude
Lumber Dip	39° 39.869'	-120° 14.196'
Barn Dip	39° 40.880'	-120° 12.838'
Tank Dip	39° 46.120'	-120° 10.831'
Last Chance	39° 46.797'	-120° 16.266'
Brown Dip	39° 45.068'	-120° 13.699'
Ranch Dip	39° 47.693'	-120° 16.735'
Upper Dog	39° 38.430'	-120° 1.531'
Middle Dog	39° 38.234'	-120° 0.650'
Lower Dog	39° 37.607'	-120° 0.138'
Donkey Dip	39° 39.466'	-120° 6.530'



Truckee

Sources: Esri, DeLorme, USGS, NPS, Sources: Esri, USGS, NOAA