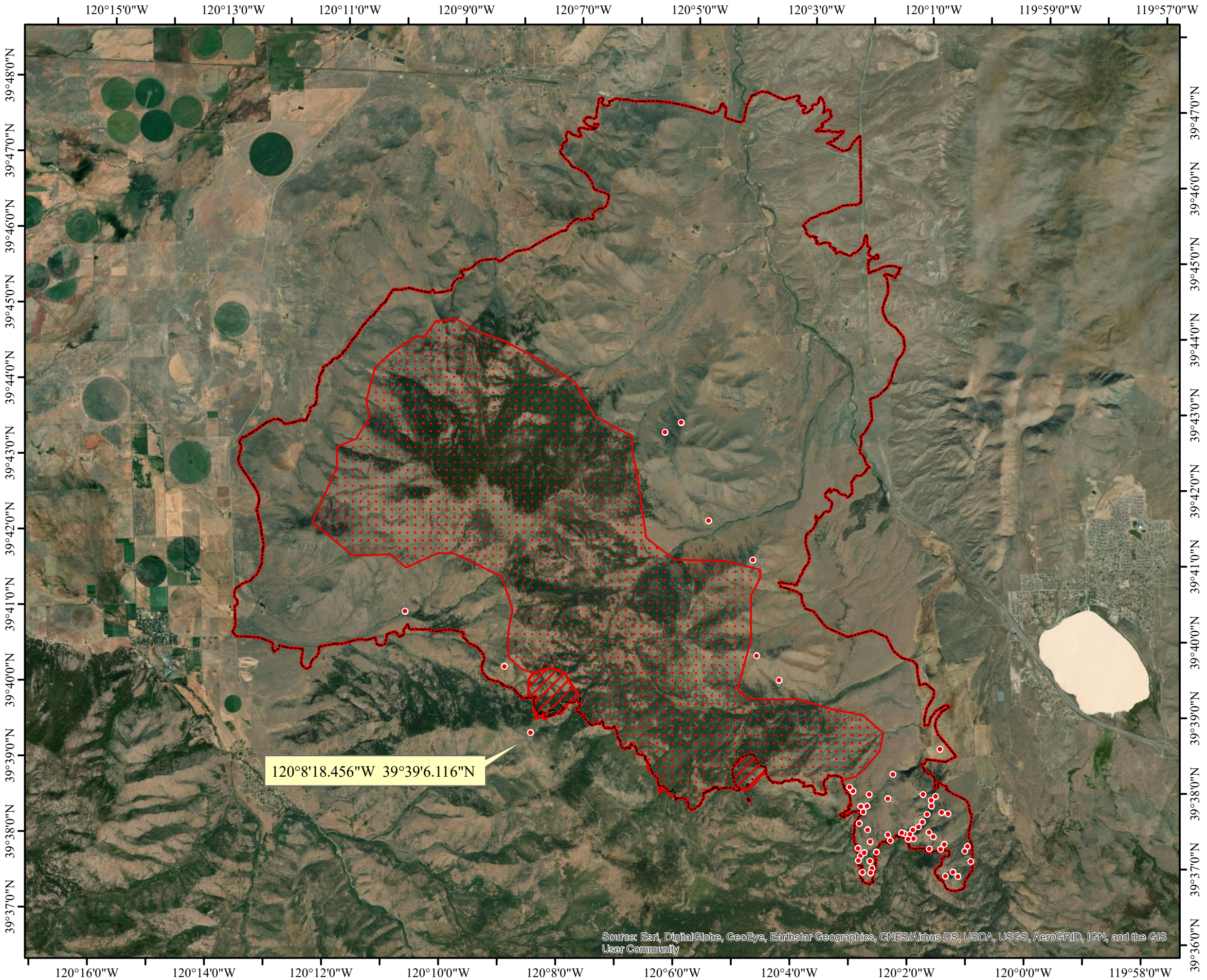
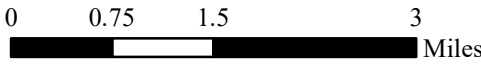


INFRARED MAP
LOYALTON
CA-TNF-001600
 Interpreted (IR) Acres:46617
 August 20, 2020 @ 0400 PDT



120°8'18.456\"W 39°39'6.116\"N

- Isolated Heat
- GIS Perimeter (20200919 @ 2228)
- Heat Perimeter
- Intense Heat
- Scattered Heat



Source: Esri, DigitalGlobe, GeoEye, Earthstar Geographics, CNES/Airbus DS, USDA, USGS, AeroGRID, IGN, and the GIS User Community

IRIN: Cheron Ferland
Taos, NM
Nad 83 UTM Zone 10