

# WOODWARD INCIDENT

## CA-RNP-12009 (PPNF62)

### IAP

## Tuesday, August 25, 2020



### Poison Ivy and Poison Oak

#### Recognizing Poison Ivy and Poison Oak.

- **Poison Ivy:** Found throughout the United States. Can grow as a vine or small shrub trailing along the ground or climbing on low plants, trees and poles. Each leaf has three glossy leaflets, with smooth or toothed edges. Leaves are reddish in spring, green in summer, and yellow, orange, or red in fall. May have greenish-white flowers and whitish-yellow berries.
- **Poison Oak:** Grows in tall clumps or long vines on the Pacific Coast. Fuzzy green leaves in clusters of three are lobed or deeply toothed with rounded tips. May have yellow-white berries.

#### Tips for Treatment

- Don't scratch the blisters. Bacteria from under your fingernails can get into them and cause an infection. The rash, blisters, and itch normally disappear in several weeks without any treatment.
- You can relieve the itch by:
- Using wet compresses or soaking in cool water.
- Applying over-the-counter (OTC) topical corticosteroid preparations or taking prescription oral corticosteroids.
- Applying topical OTC skin protectants, such as zinc acetate, zinc carbonate, zinc oxide, and calamine dry the oozing and weeping of poison ivy, poison oak, and poison sumac. Protectants such as baking soda or colloidal oatmeal relieve minor irritation and itching. Aluminum acetate is an astringent that relieves rash.

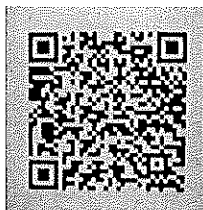
#### See a doctor if:

- You have a temperature over 100 degrees Fahrenheit.
- There is pus, soft yellow scabs, or tenderness on the rash.
- The itching gets worse or keeps you awake at night.
- The rash spreads to your eyes, mouth, genital area, or covers more than one-fourth of your skin area.
- The rash is not improving within a few weeks.
- The rash is widespread and severe.
- You have difficulty breathing.

COVID-19 Hotline (415) 246-4136

#### Signs of COVID-19

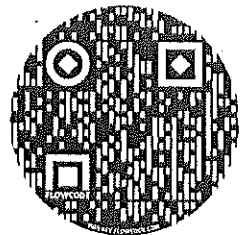
- New loss of smell or taste
- Fever
- Cough, shortness of breath
- Muscle pains/aches, More than normal
- Vomiting/diarrhea



Evacuation  
Maps



IAP

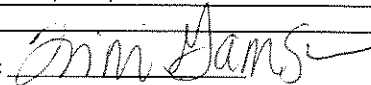


Maps

Please submit photos and videos to [2020.woodward@fire.net](mailto:2020.woodward@fire.net)

INCIDENT OBJECTIVES	1. INCIDENT NAME Woodward	2. DATE 8/25/2020	3. TIME 1930
<p><b>4. OPERATIONAL PERIOD</b></p> <p><b>Values of Concern:</b></p> <ul style="list-style-type: none"> <li>• Neighboring communities and private residences including Inverness, Pt. Reyes Station, Sea Haven, Olema, Laguna and Bear Valley Ranches and Bolinas.</li> <li>• Mountain Vision Communication Site that serves the FAA, Marin County, NPS, and other entities.</li> <li>• High power transmission lines providing power to Novato and the Bay Area.</li> <li>• Highway 1 providing a main thoroughfare.</li> <li>• Many historic, natural, cultural and recreational values within the park including historic buildings and multiple T&amp;E species.</li> <li>• Economic values associated with park partners, concessionaires, ranches and local businesses.</li> </ul> <p><b>Management Objectives:</b></p> <ul style="list-style-type: none"> <li>• Provide for emergency personnel and public safety at all times through the utilization of a deliberate risk-informed approach, with avenues for feedback from personnel. Also, ensure COVID-19 precautions and best practices are met by following agency, team and county guidance.</li> <li>• Ensure coordinated, timely and accurate release of public information. When possible utilize virtual platforms.</li> <li>• Foster and maintain relationships with the public, cooperators and stakeholders.</li> <li>• Maintain fiscal accountability by making good risk-informed decisions.</li> </ul> <p><b>Operational Objectives:</b></p> <ul style="list-style-type: none"> <li>• Under the full suppression strategy, utilize direct and indirect tactics to minimize fire size. As feasible, utilize minimum impact suppression tactics in the Phillip Burton Wilderness.</li> <li>• Protect the values of concern identified above by suppressing the wildfire, utilizing point protection of structures when necessary and strategies and tactics which result in minimal impact to resource values.</li> <li>• Identify and utilize primary and alternate containment opportunities considering risk, resource availability, and probability of success.</li> <li>• Cooperating with Marin County Fire Department, refine and further develop a population protection plan for the surrounding communities.</li> </ul> <p><b>Commander's Intent:</b></p> <p>It is my expectation that we as an organization will meet the following Leader's Intent as well as the above objectives:</p> <ul style="list-style-type: none"> <li>• <b>TASK:</b> Ensure all incident strategies and actions reflect a commitment to public, responder, and aviation safety through using the risk management process as outlined in the IRPG and the aviation risk assessment process. If you cannot mitigate a tactical hazard to an acceptable level of risk, do not implement the corresponding tactical action until such time as the risk can be satisfactorily mitigated before re-engaging. Ensure that Commanders intent is clearly communicated and understood. <b>PURPOSE:</b> To manage risk in all incident actions. <b>END STATE (Outcome):</b> No serious illnesses, injuries or deaths.</li> <li>• <b>TASK:</b> Coordinate incident management activities with our requesting and cooperating agencies including but not limited to suppression actions and support needs. <b>PURPOSE:</b> To ensure incident management activities are aligned with the overall goals and direction provided by the requesting and cooperating agencies. <b>END STATE (Outcome):</b> The mission assignment is resolved to the satisfaction of requesting and cooperating agencies.</li> <li>• <b>TASK:</b> Coordinate closely with resource advisors, or designated agency representative, on all operational activities. <b>PURPOSE:</b> To ensure that suppression impacts to natural and cultural resources are kept to a minimum. <b>END STATE (Outcome):</b> Resource values have received no detrimental impacts.</li> <li>• <b>TASK:</b> Treat all incident personnel, cooperators, and local publics with dignity and respect creating a "no tolerance" atmosphere for harassment, alcohol, or illegal drug use. <b>PURPOSE:</b> To create an environment that is based on solid relationships and is conducive to efficient accomplishments. <b>END STATE (Outcome):</b> All people associated with the incident felt valued and were able to contribute to a positive outcome in the management of the incident.</li> </ul>			
<p><b>8. Attachments: Organizational Assignment List (ICS 203);</b></p> <p>Fire Weather Forecast; Fire Behavior Forecast; Safety Message; Div/Group Assignment Lists (ICS 204); Air Operations Summary (ICS 220); Radio Communications Plan (ICS 205); Demob Message; Human Resource Message; Training Specialist Message; Maps; Unit Log; Medical Plan</p>			
<p><b>9. PREPARED BY (PLANNING SECTION CHIEF)</b></p> <p><i>IS/ Trini Garrison</i></p>	<p><b>10. APPROVED BY (INCIDENT COMMANDER)</b></p> <p><i>IS/ Scott Schuster</i></p>		

## ORGANIZATION ASSIGNMENT LIST (ICS 203)

<b>1. Incident Name:</b> WOODWARD		<b>2. Operational Period: Date From:</b> 8/25/2020 Time From: 0800		<b>Date To:</b> 8/26/2020 Time To: 0800	
<b>3. Incident Commander(s) and Command Staff:</b>			<b>7. Operation Section:</b>		
IC/UC's	Doug Turman, Scott Schuster (T), Aaron Thompson (T)	Operations	Mike Granger, Brandon Cichowski, Joey Gallion (T), Bret Lewis (T)		
Deputy	Wally Bennett	Deputy Operations			
Safety Officer	Dan LeCrone, Gerald Vickers	Night Ops	Tom Cable		
Information Officer	Mary Rasmussen, Kimberly Nelson (Virtual)	Staging Area			
Liaison Officer	Cornie Hudson, Licette Hammer (T), Jason Brey (T)	Branch	I	Eric Kurtz, Greg Campbell (T)	
<b>Covid Taskforce</b>		Division/Group	C	Jonathan Clark, Nick Chavira (T)	
LOFR	Anna Stoll	Division/Group	E	Kevin Beck	
Medical Advisor	Dr. Henry Sebold	Division/Group	Z	Keith Kelley	
Safety Officer	Stan Lovan	Division/Group			
<b>4. Agency/Organization Representatives:</b>					
Agency/Organization	Name	Division/Group			
NPS	Dan Foster	Division/Group			
Point Reyes National Seashore Park Sup	Carey Feierabend	Division/Group			
MRN Line Officer	Jason Weber	Division/Group			
Marin County OES	Woody Baker-Cohn	Branch	II	Don Sorensen, Jess Register (T)	
Marin County Sheriff	Brenton Schneider	Division/Group	T	Jonathan Moore	
DPW	Michael Frost	Division/Group	W	Darren Bridges, Jacob Miller (T)	
CHP		Division/Group			
Cal Trans		Division/Group			
Bolinas Fire	George Krakauer	Division/Group			
Inverness Fire	Jim Fox	Branch	Structure	Roger Goldman, Chris Johnson (T)	
Marin H&HS	Dr. Lisa Santora	Division/Group	Group	Kirk Kraft, Dan Mahoney (T)	
Marin Humane	Cindy Machado	Division/Group			
PG&E	Jim Wickham	Division/Group			
		Division/Group			
		Division/Group			
		Branch	Night		
		Division/Group	Night	Dale Schmidt	
<b>5. Planning Section:</b>					
Chief	Trini Garrison, Jane Ingebretson	Division/Group			
Resource Unit	Garrett Schairer, Cody Lamb (T)	Division/Group			
Situation Unit	Valentijn Hoff, Andy Reed (T)	Branch			
Resource Adviser	Wende Rehlaender, Garrett Dickson	Division/Group			
Demobilization Unit	Rebecca Bulls	Division/Group			
Documentation Unit	Lauren Houde	Division/Group			
GIS Unit	Steve Snell, Mike Assenmacher (T), Jessica Zarate(T) (Virtual)	Division/Group			
Fire Behavior	Warren Appelhans, Jon Trapp	Division/Group			
Meteorologist	Jeremy Michael	Air Operations Branch	Director:	Lori Clark	
Air Resource Advisor	Jenny Perth	Air Support Group Supervisor	Laura Barrett, Kyle Stump (T)		
Resource Advisor	Cedar Drake	Helibase Manager			
Status/Check In	Rita Bennett (T)				
ITSS	Steve Simon, Dennis Schultz, Geri Mason (Virtual)				
<b>6. Logistics Section:</b>					
Chief	Ruth Lewis, Harv Skjerven, Ryan Plitts (T)				
Supply Unit	Steve Blatt				
Facilities Unit	Shawn Heinert				
Ground Support Unit	Don Despahn, Charles Long (T)				
Communications Unit	Kary Mavencamp, John Beck (T)				
Medical Unit	Terry Stevenson				
<b>8. Finance/Administration Section:</b>					
Chief	Sarah Lee, Deanna Crawford (T)				
Time Unit	Claire Wood (T); Ryan Patrick (T)				
Procurement Unit	Jeffrey Gardner (Virtual)				
Comp/Claims Unit	Suzanne Vernon, Erin Lally (T)				
Cost Unit	Colin Sorenson (Virtual)				
Prepared By: Name: Trini Garrison, Jane Ingebretson    Position/Title: PSC    Signature:  ICS 203    Date/Time: 8/24/2020 2300 hours    NIMS IAP					



## Woodward Fire Weather Forecast



**FORECAST NO:** 1  
**PREDICTION FOR:** Tuesday Day/Night  
**SHIFT DATE:** 8/25  
**FORECAST ISSUED:** 8/24/2020 at 2000

**NAME OF FIRE:** Woodward  
**UNIT:** CA-RNP  
**SIGNED:** Jeremy Michael  
**Incident Meteorologist**

---

**WEATHER DISCUSSION:**      *...Marine Layer Deepening...More Typical Pattern...*

After a weather system moved through the area yesterday, a more typical late August pattern will return. Highs will be near average with a deepening and more persistent marine layer. The marine layer should erode/slide back offshore by mid to late morning and returning by early to mid evening. 20-foot winds will remain southwesterly, with some afternoon gusts around 15 mph across the ridgetops. Daytime RH will range from 90-100% along the immediate coast to 70-80% inland and across the higher elevations. Expect a similar pattern through at least the middle to end of the week.

---

**WEATHER FORECAST TUESDAY:**

**WEATHER:** Mostly cloudy in the morning with fog likely along the immediate coast. Becoming partly cloudy during the afternoon.

**TEMPERATURES:** Highs 67-75 degrees.

**HUMIDITY:** 70-80%, higher along the coast.

**20 FT WINDS:** Southwest 3-8 mph with gusts to 15 mph, highest winds across the ridgetops.

**MARINE LAYER DEPTH/TIMING:** Deeper today, around 1000ft. Eroding late morning to early afternoon.

---

**TUESDAY NIGHT:**

**WEATHER:** Mostly cloudy to cloudy with areas of fog, especially along the coast.

**TEMPERATURES:** 53-57 degrees

**HUMIDITY:** 90-100%

**20 FT WINDS:** Southwest to South 3-8 mph.

**MARINE LAYER DEPTH/TIMING:** Around 1000ft, moving in between 1900-2200 hrs.

---

**EXTENDED FORECAST:**      *Similar pattern this week.*

**WEDNESDAY AND WEDNESDAY NIGHT:** Cloudy with fog in the morning, becoming partly cloudy during the afternoon. Max temps...66-74°F. Min RH 70-80%. Southwest 5-10 mph with gusts to 15 mph. Min Temps...50-55°F.

**THURSDAY AND FRIDAY:** Cloudy and fog in the morning, marine layer eroding late morning to early afternoon. Highs in the 60s/70s with Min RH 70-80%. Marine layer around 1000ft. Overnight lows 50-60°F with max RH 90-100%

---

## FIRE BEHAVIOR FORECAST

FORECAST NUMBER: #3

TYPE OF FIRE: Wildland Fire

FIRE NAME: Woodward

OPERATIONAL PERIOD: Day 08/25/2020

DATE ISSUED: 8/24/2020

TIME ISSUED: 2000

UNIT: Point Reyes National Seashore

SIGNED: /S/ Jon Trapp (FBAN)

### INPUTS

#### WEATHER SUMMARY:

\*\*See attached Fire Weather Forecast\*\*

### OUTPUTS

#### FIRE BEHAVIOR

##### GENERAL:

Fire activity closely tied to nighttime RH recovery and marine layer. Expect fire activity to increase when marine layer clears, and slope and winds align. Fire will move faster in shrub and grass fuel types. Unburned pockets will continue to burnout in the interior and produce spot fires. All fuel types are ready to burn.

\* Expect short crown runs in the timber with spotting distances up to one mile \*

\* ERC is at record high for the area \*

##### SPECIFIC:

##### DIVS C/E/T:

Upper elevations may be above marine layer influence. Expect upslope runs when wind and slope align. In timber fuels spotting distances will be up to one mile with a Probability of Ignition of 30-40%.

##### DIV Z/W:

Lower elevations may be under the marine layer influence later into morning. Watch for active fire behavior in the shrub fuels with rates of spread between 60-150 chains per hour and Flame Lengths between 15-20 feet. Shrub fuels can spot up to 400 feet with a Probability of Ignition of 40% in open areas.

##### Structure Protection Group:

Keep heads up for falling fire embers and spots that may originate from up to a mile away.

##### AIR OPERATIONS:

Many aircraft operating in the area. Ensure clear communications to reduce risk and minimize confusion.

### SAFETY

Stay alert for spot fires that may establish well outside fire perimeter. Scan surrounding hillsides for new smokes.

# Safety Message

## Managing Change

Change occurs at every moment of every day. Transitions between work shifts, personnel, line assignments, fuels, weather, topography, and other variables are prime opportunities for accidents to occur. Recognizing change and managing it appropriately is every fire fighters responsibility.

Three Techniques for Managing Change:

- **Anticipate** - Look for it. Maintain your situational awareness throughout your shift and anticipate change at all times.
- **Ask Questions** - Understand it. Get more information and ask questions. Remember to include all personnel, including subordinates, when information gathering.
- **Take Action** - Address it. Take the time to mitigate all hazards and make them known. Stay flexible to adjust your tactics as necessary.

Communication is the best tool to begin understanding and addressing change appropriately. Include all personnel and means necessary to fully identify and communicate change.

**Change is Here – Be Mindful and Act Appropriately**

















**AIR OPERATIONS SUMMARY 220.v.3**

Prepared By: Lori Clark

Prepared Date: 08/24/2020

Prepared Time: 2000

1. INCIDENT NAME: Woodward	2. OPS PERIOD DATE: 08/25/2020	START TIME: 0800	END TIME: 2000	SUNRISE: 0636	SUNSET: 1950
-------------------------------	-----------------------------------	---------------------	-------------------	------------------	-----------------

**3. Risk Assessment Mitigations, Special Instructions, and Remarks:**  
 Hazards: Visibility – smoke and marine fog Mitigation: Ensure visibility is within acceptable limits to safely conduct flight operations  
 Caution: Smokey conditions create decreased visibility and aviation operations will terminate at sunset (use last 1/4hr for RTB--exceptions allowed—communicate intent)  
 HAZARD: External loads over high traffic routes (Hwy 101);

4. READY ALERT MEDEVAC A/C H-551 short haul capable (& Rappel)	5. TFR: # 0/5395 5 NM RADIUS OF 380035N/1225017W (POINT REYES VOR/DME PYE144004.4) SFC-5000FT Frequency: 125.5250 <a href="https://tfr.faa.gov/save_pages/detail_0_5395.html">https://tfr.faa.gov/save_pages/detail_0_5395.html</a>
--	---

6. PERSONNEL	NAME	PHONE #	7. FREQUENCIES	type	Freq.	8. FIXED-WING Avail/ Type/ Make-Model/ N#
AOBD	Lori Clark	406.370.1710	TFR/Fixed-Wing AA	AM	125.5250	AIRTANKERS- Order through Air Attack
Deputy AOBD	Laura Barrett	208-983-8154	FW Tactical	FM TX/RX	170.3875	CL 415 (2 @ Santa Rosa)
ASGS -t	Kyle Stump	208-816-3141	Rotor-wing AA	AM		
			A/G Primary	FM TX/RX	166.9375	
HEB1	On Order		A/G Secondary	FM RX/TX	166.600	
ATGS	R5 Zone ATGS		CALCORD (Medical)	FM RX/TX		ATGS AIRCRAFT: Order through Woodacre ECC 415-473-6717
						E-Mail Costs to: • 2020.woodward.finance@firenet.gov • colin_sorenson@firenet.gov Helibase E-Mail: pending
Helibase: Reyes Point Helispot						
UAS Operator	Joe Suarez	559-285-9128	Air Guard	FM RX/TX	168.625	

**9. HELICOPTERS (Assigned)**

**9.a Additional Helicopters**

FAA N#	TY	MAKE/ MODEL	BASE	AVAIL	REMARKS	FAA N#	TY	MAKE/ MODEL	BASE	AVAIL	REMARKS
7211HT	1	Sikorsky - CH54B	Petaluma	0900				CL-415	Santa Rosa	0900	
161KA	1	K-1200	Gnoss Field	0900				CL-415	Santa Rosa	0900	
212BT	2	Bell 212HP	Petaluma	0900	Call sign H-510				UAS		
2055GH	2	UH1H	Gnoss Field	0900		3		Matrice 600	Reyes Point Station	0700	IR, Mapping, PSD
N551HQ	2	Bell 205	Gnoss Field	0900	Call sign H-551: Short haul capable						



**INCIDENT RADIO COMMUNICATIONS PLAN**

1. Incident Name	WOODWARD	2. Date/ Time Prepared	8/24/2020 1930	3. Operational Period Date/Time	8/25/2020 to 8/26/2020 0600-0600
------------------	----------	------------------------	----------------	---------------------------------	----------------------------------

Channel	DISPLAY	Frequency		Tone	Mode	Assignment	Remarks
		Rx	Tx				
1	PRNSS LTH	Rx	171.1625	110.9		DIV C/ZW	LIGHTHOUSE
		Tx	164.0875	110.9			
2	PRNSS BRN	Rx	169.7125	110.9		DIV T/E	MT BARNABE
		Tx	162.1625	110.9			
3		Rx					
4	NIFC T1	Rx	168.0500	NONE		DIV C	NIFC
		Tx	168.0500	NONE			
5	NIFC T3	Rx	168.6000	NONE		DIV E	NIFC
		Tx	168.6000	NONE			
6	NIFC T5	Rx	166.7250	NONE		DIV W - STRUCTURE/NIGHT	NIFC
		Tx	166.7250	NONE			
7	NIFC T6	Rx	166.7750	NONE		DIV Z/T	NIFC
		Tx	166.7750	NONE			
8		Rx					
9		Rx					
		Tx					
10		Rx					
		Tx					
11		Rx					
		Tx					
12		Rx					
		Tx					
13		Rx					
		Tx					
14	AG TAC	Rx	166.9375	NONE		ALL DIVS	AIR TO GROUND
		Tx	166.9375	NONE			
15	CALCORD	Rx	156.0750	156.7		ALL DIVS	
		Tx	156.0750	156.7			
16	AIRGUARD	Rx	168.6250	NONE		ALL DIVS	Emergency Air Contact
		Tx	168.6250	110.9			

5. Prepared by (Communications Unit)

Kary Mavencamp, COML *Kary Mavencamp*

CONTROLLED UNCLASSIFIED INFORMATION



## MEDICAL PLAN (ICS 206)

<b>1. Incident Name:</b> <p style="text-align: center; margin: 0;">WOODWARD</p>	<b>2. Operational Period:</b> Date From: <u>8/25/20</u> Date To: <u>8/26/20</u> Time From: <u>0800</u> Time To: <u>0800</u>
--	--

3. Medical Aid Stations:			
Name	Location	Contact Number/Freq	Paramedics

4. Transportation (indicate air or ground):			
Ambulance Service	Location	Contact Number	Level of Service
Marin County Fire M94	4th and B. Pl. Reyes CA	415 473-6717	ALS
Marin County Fire M96	33 Castle Rock, Woodacre CA	415-473-6717	ALS
Marin County Fire M97	32 Belvedere Ave, Stinson Beach 94970	415 473-7235	ALS
REACH 1 Copter	Sonoma County Airport, 2200 Airport Blvd, Santa Rosa	800-252-5050	ALS
HENRY 1 Copter	Sonoma County Airport, 2200 Airport Blvd, Santa Rosa	707-565-2121	ALS

Hospital Name	Address,	Contact Number(s)/ Frequency	Travel Time		Trauma Center	Burn Center	Helipad
	Lat & Long		Air	Ground			
Marin General	250 Bon Air Rd, Greenbrae, CA	415-925-7000	N/A	1 Hour	Level 3	<input type="checkbox"/>	<input type="checkbox"/>
Novato Community	180 Rowland Way, Novato, CA	415-209-1300	N/A	30	EDAT	<input type="checkbox"/>	<input type="checkbox"/>
Kaiser Terra Linda	99 Monticello Rd, San Rafael, CA	415-444-2000	N/A	45	EDAT	<input type="checkbox"/>	<input type="checkbox"/>
John Muir	1601 Ygnacio Valley Rd, Walnut Creek, CA	925-939-5800	15	50	Level 2	<input type="checkbox"/>	<input checked="" type="checkbox"/>
Santa Rosa Memorial	1165 Montgomery Dr. Santa Rosa, CA	707-525-5300	15	45	Level 2	<input type="checkbox"/>	<input checked="" type="checkbox"/>
UC Davis Medical Center	2315 Stockton Blvd, Sacramento	916-734-2011	20	90	Level 1	<input checked="" type="checkbox"/>	<input checked="" type="checkbox"/>

6. Special Medical Emergency Procedures	
<p><b>Line Emergency</b> Crew Supervisor will contact Division Supervisor with patient complaint/condition and location.</p> <p>- Division Group Supervisor Contacts:</p> <ol style="list-style-type: none"> <li>1. Closest EMS resource</li> <li>2. Woodacre ECC</li> </ol> <p>- ECC Contacts:</p> <ol style="list-style-type: none"> <li>1. Ground or Air ambulance as requested.</li> <li>2. Operations</li> <li>3. Safety</li> <li>4. Medical Unit</li> </ol> <p>- Division Supervisor or designee will serve as point of contact and run medical emergency on assigned channel.</p> <ol style="list-style-type: none"> <li>1. A pre-assigned tactical frequency (i.e. CALCORD) should be used for IWI and only for duration of the emergency.</li> </ol> <p>- Communications Unit will clear the Command channel for emergency traffic as needed for duration of the need.</p> <p><b>Camp Emergency</b> Contact Medical Unit with patient complaint/condition and location. Medical staff will respond to stabilize the patient.</p> <p>- Medical Unit contacts</p> <ol style="list-style-type: none"> <li>1. Communications</li> <li>2. Safety</li> <li>3. Logistics</li> <li>4. Operations</li> <li>5. Crew Supervisor</li> <li>6. Comp/Claims</li> </ol>	<p><b>Injury Reporting Procedures</b></p> <p>Nature of Injury: _____</p> <p>Location of Patient: _____</p> <p>Point of Contact: _____</p> <p>Transportation Requested by: Air _____ Ground _____</p> <p>Point of Pick-Up: _____</p> <p style="padding-left: 40px;">Lat: _____ Long: _____</p> <p>Patient Unit ID: _____</p> <p>Is an EMT with Patient: Yes _____ No _____</p> <p>Age: _____ Sex: Male _____ Female _____</p> <p><b>All Emergencies - Secure the area and identified witnesses for later investigation. Keep accurate log of events.</b></p>

**COVID HOTLINE(415) 246-4136**

Check box if aviation assets are utilized for rescue. If assets are used, coordinate with Air Operations.

<b>7. Prepared by (Medical Unit Leader):</b> <p style="text-align: center; margin: 0;">Terry Stevenson</p>	<b>Signature:</b> _____
<b>8. Approved by (Safety Officer):</b> <p style="text-align: center; margin: 0;">Dan LeCrone, Gerald Vickers</p>	<b>Signature:</b> _____
<b>ICS 206</b>	<b>Date/Time:</b> _____



# National Technology and Development Program



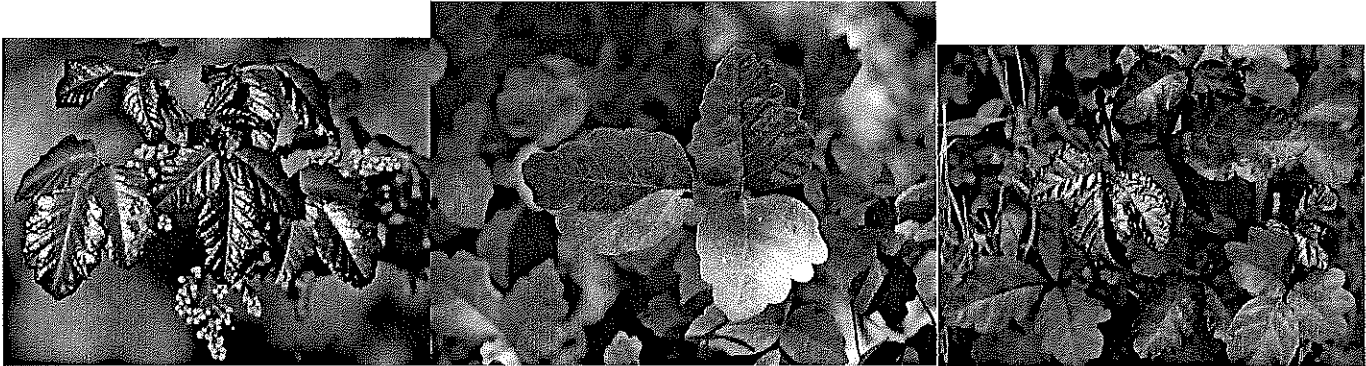
## What Firefighters Need to Know: *Poison Oak*

DATE: 10 August 2018

### Poison Oak Basics:

Poison ivy, poison oak, and poison sumac are plants that contain an irritating, oily sap called urushiol. Urushiol can be found on the leaves, stems, flowers, and roots of these plants even after they have died. Exposure to even very small amounts of urushiol (less than a grain of table salt) can trigger an allergic reaction and development of a rash in 80%-90% of individuals. The rash can appear within hours of exposure or up to several days later. Poison oak rash is most likely to appear around your wrists, ankles, and neck, where the skin is thinner. A person can be exposed to urushiol directly or by touching objects -- such as clothing, tools, and equipment-- that have come into contact with the plants. Individual sensitivity varies.

The leaves of poison oak look a lot like oak leaves and are almost always divided into leaflets of 3, hence the saying "Leaves of 3, Let it be!". Leaflets grow approximately the length of your thumb (1.5 in) to the length of your hand (4 in) and have scalloped, toothed, or lobed edges. Leaves are typically shiny green early in the season and then turn yellow and red in the late summer. Poison oak has three main growth forms: an upright shrub, a ground-hugging shrub, and a climbing, clinging vine. The plant bears clusters of greenish yellow or white berries in the summer and fall. It is found at altitudes below 5000 feet.



### Myths and Facts:

**Myth:** The rash is contagious.

**Fact:** The rash or blisters do not have urushiol oil and won't spread poison oak to other parts of your body (or to another person). Only the oil itself (if still on hands or objects) can spread.

**Myth:** I've been in poison oak many times and never broke out. I'm immune.

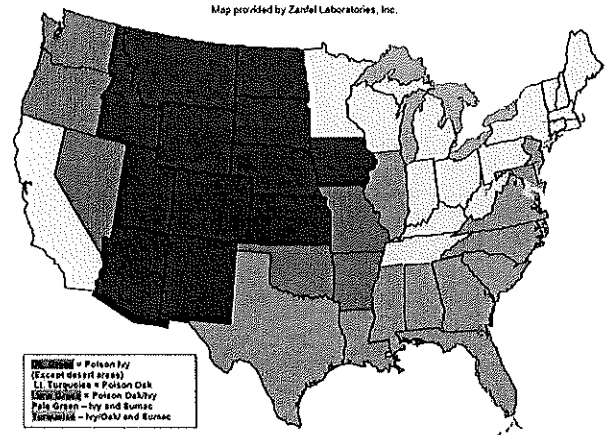
**Fact:** Around 90% are allergic to urushiol oil, so it's a matter of time and exposure. The more times you are exposed to urushiol, the more likely it is that you will break out with an allergic rash. For the first time sufferer, it can take many days for the rash to appear.

**Myth:** The rash shows up right away

**Fact:** It usually forms within 24 to 72 hours of contact but can be longer, depending on where the plant touched you. It usually peaks within a week, but can last as long as 3 weeks. A rash from poison oak can look like patches or streaks of red, raised blisters, but varies from person to person. There is no rash that is "characteristic" of poison oak.

### U.S. Prevalence of Poison Ivy, Oak & Sumac

Map provided by Zantel Laboratories, Inc.



Source: United States Department of Agriculture Plants Database. <http://plants.usda.gov/>

## Prevention:

### **Preventing exposure is difficult, however...**

- Firefighters are encouraged to prevent exposure to skin by properly wearing their personal protective equipment (PPE): long-sleeved Nomex® shirt and Nomex® pants, as well as leather gloves and eye protection.
- In an area, if the possibility of contact with these plants exists, you can apply commercially available barrier creams to the skin, which may help prevent or lessen the exposure to the toxic plant oils.
- Allergy shots are available to help prevent recurrences of the poison ivy, poison oak, or poison sumac rash. Unfortunately, the shots are frequently ineffective and are typically reserved for those who are extremely sensitive.

## Response and Treatment Strategies:

Treating as much skin as possible the moment it is noticed can dramatically reduce the severity.

Once exposed to urushiol, it is quickly absorbed into the skin (within 10-15 minutes) and as time passes the effectiveness of removal strategies decrease.

- As soon as possible wash your body well with plenty of water and soap. If on the fireline creek water, tecnu, and alcohol or other wipes can help. Pay special attention to your hands, fingernails, and whatever skin may have touched the plant.
- Some authorities recommend rinsing the exposed area with rubbing alcohol, wipes, or commercially available poisonous plant washes
- You should wash your clothes and PPE (separately). There may be laundry provided at an ICP. If washing is not possible, you can attempt to exchange PPE.
- Wash any other gear or tools that may have come into contact with the plant.

### **An allergic reaction to poison oak CANNOT be cured, but the symptoms can be treated:**

- Once a rash appears, keep the area clean, dry, and cool if possible.
- As tough as it is to resist, don't scratch the rash or blisters. Bacteria on your hands can cause an infection.
- Topical treatments can relieve itching, including calamine lotion, oatmeal baths, Tecnu, Zanafel, or aluminum acetate
- Oral antihistamines, such as diphenhydramine (Benadryl), may also help relieve itching. But be careful — topical antihistamine products on your skin can make matters worse.
- Cool compresses or baths with baking soda or oatmeal can also potentially soothe the rash.

### **If any of the following occur, you should seek immediate care and treatment by an onsite medical care provider (if provided) or hospital:**

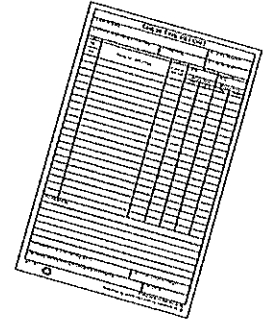
- You have symptoms of a severe reaction characterized by difficulty breathing, difficulty swallowing, facial swelling.
- You have had a previous severe reaction to poison oak
- The rash occurs on the face, lips, eyes, or genitals or cover much of the body
- You develop a fever and/or the rash shows signs of infection, such as increased tenderness, pus or yellow fluid oozing from the blisters, and an odor coming from the blisters

## For more information:

**Video on poison oak:** <https://www.webmd.com/allergies/poison-ivy-oak-sumac#1>

**Details on Identification:** <https://www.wikihow.com/Identify-Poison-Oak>

# HOW TO SUBMIT YOUR TIME



Resources have three options:

1. Fill out your CTR/Shift Ticket, have your supervisor sign it, and Division will forward it to Planning Ops who will give it to Finance.
2. Fill out your CTR/Shift Ticket, have your supervisor sign it, take a picture of it, and email it to Finance with the word **Time** in the subject line: [2020.woodward.finance@firenet.gov](mailto:2020.woodward.finance@firenet.gov).
3. Fill out an electronic CTR/Shift Ticket, email it to your supervisor to sign, and then email it to Finance with the word **Time** in the subject line: [2020.woodward.finance@firenet.gov](mailto:2020.woodward.finance@firenet.gov).

*Include a contact email and cell phone in the remarks!*

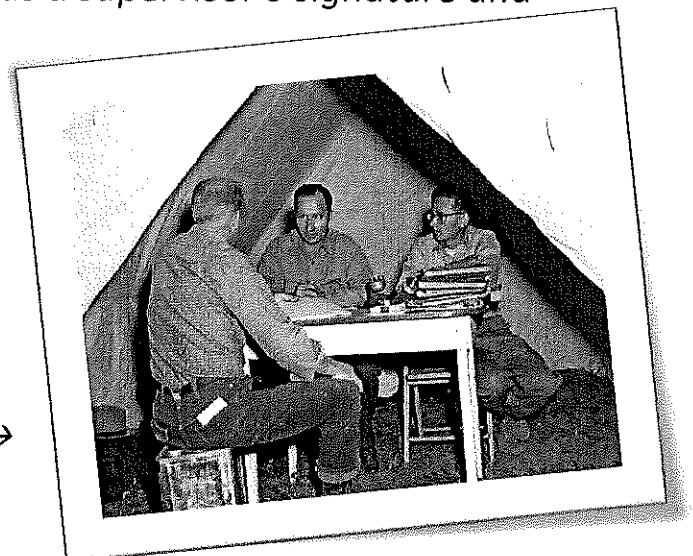
Please do not wait to turn in your time. We never know when resources could be moved to a higher priority fire and that will really slow down the reassignment process. We want to make this as smooth as possible for you.

*Note: Ensure your CTR or Shift ticket has a supervisor's signature and shows meal breaks.*

Thank you,

Your Finance Section

*Picture of Poverty Flats Finance Section 1961 ->*



## **San Geronimo Golf Course ICP**

- 5800 Sir Francis Drake Blvd, San Geronimo CA 94961

## **Samuel P Taylor Campground**

- 8889 Sir Francis Drake Blvd, Lagunitas CA 94938
- Crews/Engine Camping

TURMAN C&G CONTACT LIST

Position	Name	Cell
Incident Commander	Turman, Doug	406-250-6537
Deputy Incident Commander	Bennett, Wally	406-250-6191
Incident Commander -Trainee	Schuster, Scott	406-850-3202
Incident Commander -Trainee	Thompson, Aaron	307-330-6743
Safety Officer	LaCrone, Dan	814-386-2480
Safety Officer	Bowman, Shannon	850-450-7647
Safety Officer	Lovan, Stan	417-543-0480
Public Information Officer	Rasmussen, Mary	715-891-2048
Liaison Officer	Hudson, Cornie	406-925-3370
Liaison Officer	Anna Stull	720-393-9390
Operations Section Chief	Granger, Mike	406-366-1760
Operations Section Chief	Cichowski, Brandon	208-642-7587
Operations Section Chief	Cable, Tom	208-859-9117
Air Operations Branch Director	Clark, Lori	406-370-1710
AOBD/Air Support Group Supervisor	Barrett, Laura	208-983-8154
Planning Section Chief	Garrison, Trini	406-471-1301
Logistics Section Chief	Skjerven, Harv	715-889-1539
Logistics Section Chief	Lewis, Ruth	406-544-3075
Logistics Section Chief - Trainee	Pitts, Ryan	520-335-7595
Finance Section Chief	Lee, Sarah	208-315-2687
Finance Section Chief - Trainee	Crawford, Deanna	406-274-2995



# MEDICAL PLAN (ICS 206 WF)

Controlled Unclassified Information//Basic

## Medical Incident Report

**FOR A NON-EMERGENCY INCIDENT, WORK THROUGH CHAIN OF COMMAND TO REPORT AND TRANSPORT INJURED PERSONNEL AS NECESSARY.**

**FOR A MEDICAL EMERGENCY: IDENTIFY ON SCENE INCIDENT COMMANDER BY NAME AND POSITION AND ANNOUNCE "MEDICAL EMERGENCY" TO INITIATE RESPONSE FROM IMT COMMUNICATIONS/DISPATCH.**

Use the following items to communicate situation to communications/dispatch.

1. **CONTACT COMMUNICATIONS / DISPATCH** (Verify correct frequency prior to starting report) *Ex: "Communications, Div. Alpha. Stand-by for Emergency Traffic."*
2. **INCIDENT STATUS:** Provide incident summary (including number of patients) and command structure.  
*Ex: "Communications, I have a Red priority patient, unconscious, struck by a falling tree. Requesting air ambulance to Forest Road 1 at (Lat./Long.) This will be the Trout Meadow Medical, IC is TFLD Jones. EMT Smith is providing medical care."*

Severity of Emergency / Transport Priority	<input type="checkbox"/> <b>RED / PRIORITY 1</b> Life or limb threatening injury or illness. Evacuation need is IMMEDIATE <i>Ex: Unconscious, difficulty breathing, bleeding severely, 2° - 3° burns more than 4 palm sizes, heat stroke, disoriented.</i> <input type="checkbox"/> <b>YELLOW / PRIORITY 2</b> Serious injury or illness. Evacuation may be DELAYED if necessary. <i>Ex: Significant trauma, unable to walk, 2° - 3° burns not more than 1-3 palm sizes.</i> <input type="checkbox"/> <b>GREEN / PRIORITY 3</b> Minor injury or illness. Non-Emergency transport <i>Ex: Sprains, strains, minor heat-related illness.</i>	
Nature of Injury or Illness & Mechanism of Injury		Brief Summary of Injury or Illness <i>(Ex: Unconscious, Struck by Falling Tree)</i>
Transport Request		Air Ambulance / Short Haul/Hoist Ground Ambulance / Other
Patient Location		Descriptive Location & Lat. / Long. (WGS84)
Incident Name		Geographic Name + "Medical" <i>(Ex: Trout Meadow Medical)</i>
On-Scene Incident Commander		Name of on-scene IC of Incident within an Incident <i>(Ex: TFLD Jones)</i>
Patient Care		Name of Care Provider <i>(Ex: EMT Smith)</i>

**3. INITIAL PATIENT ASSESSMENT:** Complete this section for each patient as applicable (start with the most severe patient)

Patient Assessment: See IRPG page 106

Treatment:

**4. TRANSPORT PLAN:**

Evacuation Location (if different): (Descriptive Location (drop point, intersection, etc.) or Lat. / Long.) Patient's ETA to Evacuation Location:

Helispot / Extraction Site Size and Hazards:

**5. ADDITIONAL RESOURCES / EQUIPMENT NEEDS:**

*Example: Paramedic/EMT, Crews, Immobilization Devices, AED, Oxygen, Trauma Bag, IV/Fluid(s), Splints, Rope rescue, Wheeled litter, HAZMAT, Extrication*

**6. COMMUNICATIONS:** Identify State Air/Ground EMS Frequencies and Hospital Contacts as applicable

Function	Channel Name/Number	Receive (RX)	Tone/NAC *	Transmit (TX)	Tone/NAC *
COMMAND					
AIR-TO-GRND					
TACTICAL					

**7. CONTINGENCY:** Considerations: If primary options fail, what actions can be implemented in conjunction with primary evacuation method? Be thinking ahead.

**8. ADDITIONAL INFORMATION:** Updates/Changes, etc.

**REMEMBER:** Confirm ETA's of resources ordered. Act according to your level of training. Be Alert. Keep Calm. Think Clearly. Act Decisively.