

WOODWARD INCIDENT CA-RNP-12009 (PPNF62) IAP

Wednesday, September 2, 2020



Snags

Falling snags (dead, standing trees without leaves or needles in the crowns) present a significant hazard to wildland firefighters. Snags typically have much lower fuel moistures than live, green trees; and they burn more readily. In the process, they often throw spot fires far in advance of the main fire and often burn through more quickly than green trees, falling with little or no warning.

- The risk of injuries from falling snags increases during the night operational period when visibility is greatly reduced.
- While the cooler, nighttime period is generally a more effective time to gain control of wildfires, the increased risk from unseen falling snags may limit the widespread use of crews at night in areas of dead and dying timber.
- Environmental conditions that increase risk from falling snags:
 - Strong winds
 - Night operations
 - Steep slopes
 - Diseased or bug-killed areas
- Things to consider when assessing the potential hazards of both snags and green trees:
 - Trees have been burning for an extended period.
 - High-risk tree species (those that are known for rot and shallow root systems) are in the area.
 - Numerous downed trees.
 - Dead or broken tips and limbs overhead.
 - Accumulation of downed limbs.
 - Absence of needles, bark or limbs.
 - Leaning or hung-up trees.
- Mitigation measures to take:
 - Keep personnel out of the high-risk areas until the hazard has been removed.
 - Identify and flag all high-risk snags and green trees.
 - Establish lookouts.

COVID-19 Hotline (415) 246-4136

Signs of COVID-19

- New loss of smell or taste
- Fever
- Cough, shortness of breath
- Muscle pains/aches, More than normal
- Vomiting/diarrhea

Provides Access to IAP,
Incident maps, Incident
Briefings, Incident
evacuation plans, and
Checkin/Demob
informaton



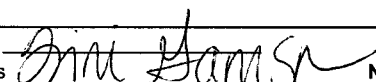
Woodward Incident Links

Please submit photos and videos to 2020.woodward@fire.net

Blank

INCIDENT OBJECTIVES	1. INCIDENT NAME Woodward	2. DATE 9/1/2020	3. TIME 1930
<p>4. OPERATIONAL PERIOD</p> <p>Values of Concern:</p> <ul style="list-style-type: none"> • Neighboring communities and private residences including Inverness, Pt. Reyes Station, Sea Haven, Olema, Laguna, and park headquarters in Bear Valley, Ranches and Bolinas. • Mountain Vision Communication Site that serves the FAA, Marin County, NPS, and other entities. • High power transmission lines providing power to Novato and the Bay Area. • Highway 1 providing a main thoroughfare. • Many historic, natural, cultural and recreational values within the park including historic buildings and multiple T&E species. • Federally designated wilderness – Phillip Burton Wilderness. • Economic values associated with park partners, concessionaires, ranches and local businesses. <p>Management Objectives:</p> <ul style="list-style-type: none"> • Provide for emergency personnel and public safety at all times through the utilization of a deliberate risk-informed approach, with avenues for feedback from personnel. Also, ensure COVID-19 precautions and best practices are met by following agency, team and county guidance. • Ensure coordinated, timely and accurate release of public information. When possible utilize virtual platforms. • Foster and maintain relationships with the public, cooperators and stakeholders. • Maintain fiscal accountability by making good risk-informed decisions. <p>Operational Objectives:</p> <ul style="list-style-type: none"> • Under the full suppression strategy, utilize direct and indirect tactics to minimize fire size. As feasible, utilize minimum impact suppression tactics in the Phillip Burton Wilderness. • Protect the values of concern identified above by suppressing the wildfire, utilizing point protection of structures when necessary and strategies and tactics which result in minimal impact to resource values. • Identify and utilize primary and alternate containment opportunities considering risk, resource availability, and probability of success. • Cooperating with Marin County Fire Department, refine and further develop a population protection plan for the surrounding communities. <p>Commander's Intent:</p> <p>It is my expectation that we as an organization will meet the following Leader's Intent as well as the above objectives:</p> <ul style="list-style-type: none"> • TASK: Ensure all incident strategies and actions reflect a commitment to public, responder, and aviation safety through using the risk management process as outlined in the IRPG and the aviation risk assessment process. If you cannot mitigate a tactical hazard to an acceptable level of risk, do not implement the corresponding tactical action until such time as the risk can be satisfactorily mitigated before re-engaging. Ensure that Commanders intent is clearly communicated and understood. PURPOSE: To manage risk in all incident actions. END STATE (Outcome): No serious illnesses, injuries or deaths. • TASK: Coordinate incident management activities with our requesting and cooperating agencies including but not limited to suppression actions and support needs. PURPOSE: To ensure incident management activities are aligned with the overall goals and direction provided by the requesting and cooperating agencies. END STATE (Outcome): The mission assignment is resolved to the satisfaction of requesting and cooperating agencies. • TASK: Coordinate closely with resource advisors, or designated agency representative, on all operational activities. PURPOSE: To ensure that suppression impacts to natural and cultural resources are kept to a minimum. END STATE (Outcome): To the greatest extent feasible, resource values have received no detrimental impacts. • TASK: Treat all incident personnel, cooperators, and local publics with dignity and respect creating a "no tolerance" atmosphere for harassment, alcohol, or illegal drug use. PURPOSE: To create an environment that is based on solid relationships and is conducive to efficient accomplishments. END STATE (Outcome): All people associated with the incident felt valued and were able to contribute to a positive outcome in the management of the incident. 			
8. Attachments: SEE ATTACHED			
9. PREPARED BY (PLANNING SECTION CHIEF) <i>IS/ Jane Ingelbretson</i>	10. APPROVED BY (INCIDENT COMMANDER) <i>IS/ Doug Turman</i>		

ORGANIZATION ASSIGNMENT LIST (ICS 203)

1. Incident Name: Woodward		2. Operational Period: Date From: 9/2/2020		Date To: 9/3/2020	
		Time From: 0800		Time To: 0800	
3. Incident Commander(s) and Command Staff:			7. Operation Section:		
IC/UC's	Doug Turman, Scott Schuster (T), Aaron Thompson (T)	Operations	Mike Granger, Brandon Cichowski, Joey Gallion (T), Bret Lewis (T)		
Deputy	Wally Bennett	Deputy Operations			
Safety Officer	Dan LeCrone, Shannon Bowman	Night Ops	Tom Cable		
Information Officer	Mary Rasmussen, Kimberly Nelson (Virtual)	Staging Area			
Liaison Officer	Cornie Hudson, Licette Hammer (T), Jason Brey (T)	Branch	I	Eric Kurtz, Greg Campbell (T)	
Covid Taskforce		Division/Group	C	Jonathan Clark	
LOFR	Anna Stull	Division/Group	E	Kevin Beck	
Medical Advisor	Dr. Henry Sebold	Division/Group	Z	Keith Kelley	
Safety Officer	Todd Payne				
4. Agency/Organization Representatives:					
Agency/Organization	Name				
NPS	Dan Foster				
Point Reyes National Seashore Park Sup	Carey Feierabend				
MRN Line Officer	Jason Weber				
Marin County OES	Woody Baker-Cohn	Branch	II	Don Sorensen, Jess Register (T)	
Marin County Sheriff	Brenton Schneider	Division/Group	T	Jonathan Moore	
DPW	Michael Frost	Division/Group	W	Darren Bridges, Jacob Miller (T)	
CHP					
Bolinas Fire	George Krakauer				
Inverness Fire	Jim Fox				
Marin H&HS	Dr. Lisa Santora	Branch	Structure:	Roger Goldman, Chris Johnson (T)	
Marin Humane	Cindy Machado	Division/Group	Group	Kirk Kraft, Todd Overshiner	
PG&E	Jim Wickham				
5. Planning Section:		Branch	Night		
Chief	Trini Garrison, Jane Ingebretson	Division/Group	Night	Dale Schmidt	
Resource Unit	Garrett Schairer, Cody Lamb (T)				
Situation Unit	Valentijn Hoff, Andy Reed (T)				
Resource Adviser	Cedar Drake				
Demobilization Unit	Rebecca Bulls				
LTAN	Tim Bumgarner				
GIS Unit	Steve Snell, Mike Assenmacher (T), Jessica Zarate (T) (Virtual)				
Fire Behavior	Warren Appelhans, Jon Trapp				
Meteorologist	Jeremy Michael				
Air Resource Advisor	Jill Webster				
Status/Check In	Rita Bennett (T)	Air Operations Branch	Director: Lori Clark		
ITSS	Dennis Schultz, Geri Mason (Virtual)	Air Support Group Supervisor	Laura Barrett, Kyle Stump (T)		
Training Specialist	Brad Smith (Virtual)	Helibase Manager			
Documentation Leader	Alicia Thomas (T)				
HRSP	Debby Hassel (Virtual)				
6. Logistics Section		8. Finance/Administration Section:			
Chief	Ruth Lewis, Harv Skjerven, Ryan Pitts (T)	Chief	Sarah Lee, Deanna Crawford (T)		
Supply Unit	Steve Blatt	Time Unit	Claire Wood (T); Ryan Patrick (T) (Virtual)		
Facilities Unit	Shawn Heinert	Procurement Unit			
Ground Support Unit	Don Despain, Charles Long (T)	Comp/Claims Unit	Suzanne Vernon, Erin Lally (T)		
Communications Unit	Kary Mavencamp, John Beck (T)	Cost Unit	Colin Sorenson (Virtual)		
Medical Unit	Terry Stevenson				
Food Unit	Heather Mclean				
Prepared By: Name:	Trini Garrison, Jane Ingebretson	Position/Title:	PSC	Signature:	
ICS 203		Date/Time:	9/1/2020	2300 hours	NIMS IAP



Woodward Fire Weather Forecast



FORECAST NO: 9
PREDICTION FOR: Wednesday Day/Night
SHIFT DATE: 9/02
FORECAST ISSUED: 9/01/2020 at 2000

NAME OF FIRE: Woodward
UNIT: CA-RNP
SIGNED: Jeremy Michael
Incident Meteorologist

WEATHER DISCUSSION: The marine layer is 1400-1700 ft., with 100% RH across the fire. With a deep marine layer, stratus and fog will be very slow to clear. Most locations on the fire will remain socked in through much, if not the entire day. Any places that clear will have heavy smoke with low visibility. Winds will turn from a more southwest direction in the morning to west by the afternoon. It looks like Thursday will be similar to today. As strong high pressure builds into the region beginning Friday, expect the marine layer to become potentially very shallow with much warmer and drier conditions this weekend.

WEATHER FORECAST WEDNESDAY:

WEATHER: Stratus/fog most of the day. Areas that clear, expect heavy smoke with vis less than 1 mile.

TEMPERATURES: Highs 53-60 near the coast/ridges and 60-68 inland.

HUMIDITY: 85-100% coast/ridges and 68-83% inland.

20 FT WINDS: Terrain driven/light in the morning. SW to W 4-9 mph, gusts up to 16 mph.

MARINE LAYER DEPTH/TIMING: Around 1400-1700 ft. May briefly erode in Div. Echo/Tango between 1400-1600 hrs. However there is a better chance it remains socked in.

WEDNESDAY NIGHT:

WEATHER: Dense smoke/fog under the inversion.

TEMPERATURES: 50-55.

HUMIDITY: Valleys and coast: 90-100%. Ridgetops: 100%

20 FT WINDS: Terrain driven under inversion.

MARINE LAYER DEPTH/TIMING: Around 1600-1900 ft., moving in between 1700-1900 hrs.

EXTENDED FORECAST: Strong high pressure building into the region with a shallower marine layer.

THURSDAY AND THURSDAY NIGHT: Marine layer 1100-1400 ft., eroding around 1000-1300 hrs. Max temps 60-70°F. Min RH 60-75%. Higher RH near coast/ridges. Generally NW 5-10 mph, gusts to 20 mph. Min Temps 50-56°F. Max RH valleys 90-100% and ridgetops above marine layer possibly as low as 55-70%

FRIDAY AND SATURDAY: Marine layer 500-800 ft. Highs 60s/70s, close to 80 inland. Min RH 45-60%. Overnight lows 50-60°F with overnight RH 90-100% valleys/coast and 45-60% ridgetops. NW winds, breezy across ridgetops.

Location Definitions: Inland = Div. Echo and Tango, northern Div. Charley and northern Div. Whiskey.
Coast = Div. Zulu, southern Div. Whiskey and southern Div. Charley.

Please submit observations to IMET/FBAN or text observations to (304) 886-2331

FIRE BEHAVIOR FORECAST

FORECAST NUMBER: # 11

TYPE OF FIRE: Wildland Fire

FIRE NAME: Woodward

OPERATIONAL PERIOD: Day 09/2/2020

DATE ISSUED: 9/1/2020

TIME ISSUED: 2000

UNIT: Point Reyes National Seashore

SIGNED: /S/ Jon Trapp (FBAN)

INPUTS

WEATHER SUMMARY:

****See attached Fire Weather Forecast****

OUTPUTS

FIRE BEHAVIOR

GENERAL:

**Similar fire behavior to the last few days
There will be minimal fire activity due to high relative humidity and the marine layer**

Minimal fire activity expected, but stay alert to factors that contribute to increased fire activity:

- 1) Dissipation of the marine layer
- 2) Look for slopes where sunlight penetrates to the ground and start heating fuels.
- 3) Pay attention to the division hourly weather observations – Fire activity has been picking up when RH is below 60%.
- 4) Watch for wind and slope alignment.

SPECIFIC:

DIV E: Effective firing will be difficult, but possible if marine layer lifts and RH drops below 70%, especially where slope is greater than 100%. Watch for single and small group torching that could produce spots.
PIG: 20% Most of the division will have creeping and smoldering activity.

DIVS C/T/W/Z: The marine layer will dampen fire activity. Creeping and backing activity.

Structure Group: Not expected to see any spot fires in the area.

AIR OPERATIONS:

Air operations will be impacted by marine layer and smoke.

SAFETY

Use caution when operating in areas that burned within the last few days. Trees and limbs continue will to fall with minimal wind. Keep heads up and watch out for each other.

SAFETY MESSAGE

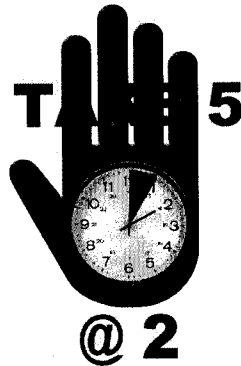
Woodward Fire

September 2, 2020

Change Changing Conditions

We are most vulnerable to accidents and errors when the operational tempo is changing, maintaining good situation awareness in spite of change in operational tempo represents a considerable challenge.

Change occurs at every moment of every day. Transitions between work shifts, personnel, line assignments, fuels, weather, topography, and other variables are prime opportunities for accidents to occur. Recognizing change and managing it appropriately is everyone's responsibility



Accidents aren't defined by one glaring moment but by multiple layers of little things

Turman's Safety Team Northern Rockies Safety Team 2

DIVISION ASSIGNMENT LIST				1. Branch I		2. Division C					
3. Incident Name Woodward				4. Operational Period Date: 9/2/2020 Time: 0700-2000							
5. Operations Personnel											
Operations		Mike Granger, Brandon Cichowski, Joey Gallion (T), Bret Lewis (T)			Division Supervisor		Jonathan Clark				
Branch Director		Eric Kurtz, Greg Campbell (T)			Safety Officer		Dan LeCrone, Shannon Bowman				
6. Resources Assigned this Period											
Strike Team/ Task Force/ Resource Designator		14 th Day	21 st Day	30 th Day	Leader	Number of persons	Drop Off	Pick up	Comments		
C-29 HC1 SILVER STATE IHC		9/3			KELLY, KEVIN	22	ICP	ICP			
E-127 WT1 JACKSON VALLEY 6140		9/11			MAKEMSON, RANDY	2	ICP	ICP			
E-138 WT2 MI WUK FD 777		9/12			SWANSON, DONALD	2	ICP	ICP			
O-72 EMPF MEDIC			9/11		O'CONNOR, JAMES	1	ICP	ICP			
O-11.62 SOF2 LOVAN		9/4			LOVAN, STAN	1	ICP	ICP			
O-89 REAF SULLIVAN		9/10			SULLIVAN, CHRISTINE	1	ICP	ICP			
O-146 REAF REHLAENDER		9/2			REHLAENDER, WENDE	1	ICP	ICP			
O-159 REAF KEELER		9/11			KEELER, KEVIN	1	ICP	ICP			
O-162 ARCH WRIGHT		9/11			WRIGHT, JASON	1	ICP	ICP			
6. Control Operations/Work assignments: Task: Hold and improve control lines on DIV-C to the DIV-Z break. Focus will be to the east of the dozer line where fire didn't make it to the ridge, sawing out un-burned green pockets. Continue to support crews with hose lay to help secure fire perimeter. Professional fallers to assist with snagging all work areas. Maintain situational awareness to provide for firefighter safety throughout the shift. Mop up to the extent necessary based up on site conditions, the values at risk, fuel bed receptiveness, and fire spread potential to make the likelihood of escape from containment lines minimal considering terrain, fuel types, and predicted weather and fire behaviors. Purpose: Minimize the fire spread and protect the population along with private and public property by stopping the spread of fire north/west in to populated areas. End State: The fire is contained by adequate control lines. All responders safely returned from their assignments. Injuries to the public and responders were minimized. Community and the regional economy returned to normal. Infrastructure remains intact.											
7. Special Instructions: P24 ambulance will be staged at DP7. The NPS repeaters are not to be used unless you cannot communicate on any of the command repeaters and there is an EMERGENCY.											
9. Division/Group Communication Summary: See Communications Plan											
Prepared by (Resource Unit Leader) <i>Corey Clark (RESL) (T)</i>				Approved by (Planning Section Chief) <i>Kevin Clark (PSG) (T)</i>				Date 9/1/2020		Time 2000	

DIVISION ASSIGNMENT LIST				1. Branch I	2. Division E			
3. Incident Name Woodward				4. Operational Period Date: 9/2/2020 Time: 0700 - 2000				
5. Operations Personnel								
Operations		Mike Granger, Brandon Cichowski, Joey Gallion (T), Bret Lewis (T)			Division Supervisor		Kevin Beck	
Branch Director		Eric Kurtz, Greg Campbell (T)			Safety Officer		Dan LeCrone, Shannon Bowman	
6. Resources Assigned this Period								
Strike Team/Task Force/Resource Designator	14 th Day	21 st Day	30 th Day	Leader	Number of persons	Drop off	Pick up	Comments
C-16 HC2IA PA-PAS ANTHRACITE	9/5			BAKER, ANDREW	20	ICP	ICP	
A-11 CHESTER HELITACK				HUTCHISON, JOSH	10	DP7	Petaluma	
E-1 STC KNF 3600C	9/3			LECKNESS, MIKE	27	ICP	ICP	5 Type 3 Eng
E-131 S/T LNF 3616C	9/11			MAYER, DEBBIE JOHNSON, JOE	26	ICP	ICP	5 Type 3 Eng
E-94 ENG4 TOWER MN 828	9/11			KUIKEN, TYLER	4	ICP	ICP	
E-126 ENG6 PEANUT PIE	9/12			GOOD GUN, DALE	3	ICP	ICP	
E-100 ENG6 DIAMOND 628	9/9			WESLET, TOM	3	ICP	ICP	
E-97 ENG6 TWIN LAKES MI 56	9/11			MATTILA, RYAN	2	ICP	ICP	
E-20 WT1 MRN 1592		9/8		PUCHIR, MARK	2	ICP	ICP	
O-201 TREE GUYS FALLER MOD #3	9/9			ULMANN, WESLEY	2	ICP	ICP	
O-11.62 SOF2 LOVAN	9/4			LOVAN, STAN	1	ICP	ICP	
O-72 EMPF MEDIC		9/11		O'CONNOR, JAMES	1	ICP	ICP	
O-89 REAF SULLIVAN	9/10			SULLIVAN, CHRISTINE	1	ICP	ICP	
O-146 REAF REHLAENDER	9/2			REHLAENDER, WENDE	1	ICP	ICP	
O-159 REAF KEELER	9/11			KEELER, KEVIN	1	ICP	ICP	
O-162 ARCH WRIGHT	9/11			WRIGHT, JASON	1	ICP	ICP	
6. Control Operations/Work assignments:								
<p>Task: Continue burnout operations from east to west along Limantour Road to NW dozer line. Then fire south along dozer line to Z Ranch Trail, with the goal of reaching the black on Horse Trail. Mop up to the extent necessary based upon site conditions, the values at risk, fuel bed receptiveness, and fire spread potential to make the likelihood of escape from containment lines minimal considering terrain, fuel types, and predicted weather and fire behaviors. Mitigate snags that may compromise line or are a safety hazard.</p> <p>Purpose: To minimize the fire spread and protect the population along with private and public property by stopping the spread of fire north into populated areas.</p> <p>End State: The fire is contained by adequate control lines. All responders have safely returned from their assignments. Injuries to the public and responders were minimized. The community and the regional economy returned to normal. Infrastructure remains intact.</p>								
7. Special Instructions:								
<p>P24 ambulance will be staged at DP7. Identify potential medical evacuation spots and clear with air ops. The NPS repeaters are not to be used unless you cannot communicate on any of the command repeaters and there is an EMERGENCY.</p>								
9. Division/Group Communication Summary:								
See Communications Plan								
Prepared by (Resource Unit Leader) <i>Joey Gallion (RESL/T)</i>			Approved by (Planning Section Chief) <i>Scott Allen (SCCT)</i>			Date 9/1/2020	Time 2000	

DIVISION ASSIGNMENT LIST				1. Branch I		2. Division Z		
3. Incident Name Woodward				4. Operational Period Date: 9/2/2020 Time: 0700 - 2000				
5. Operations Personnel								
Operations		Mike Granger, Brandon Cichowski, Joey Gallion (T), Bret Lewis (T)			Division Supervisor		Keith Kelley	
Branch Director		Eric Kurtz, Greg Campbell (T)			Safety Officer		Dan LeCrone, Shannon Bowman	
6. Resources Assigned this Period								
Strike Team/Task Force/Resource Designator	14 th Day	21 st Day	30 th Day	Leader	Number of persons	Drop off	Pick up	Comments
C-20 SHINGLE SPRINGS HC2IA	9/8			TAYAB, JOHN	17	ICP	ICP	
C-27 TORRES CONTRACTING		9/8		MIRANDA, OSCAR	20	ICP	ICP	
O-123 TFLD TODD BREININGER	9/8			BREININGER, TODD	1	ICP	ICP	
O-11.62 SOF2 LOVAN	9/4			LOVAN, STAN	1	ICP	ICP	
O-72 EMPF MEDIC		9/11		O'CONNOR, JAMES	1	ICP	ICP	
6. Control Operations/Work assignments: Task: Continue mop-up and patrol of containment lines to strengthen, secure, and hold lines with Division Z. Mop up to the extent necessary based upon site conditions, the values at risk, fuel bed receptiveness, and fire spread potential to make the likelihood of escape from containment lines minimal considering terrain, fuel types, and predicted weather and fire behaviors. Back-haul unnecessary hose and equipment from Division. Purpose: Keep fire from breaching containment lines through mop-up and direct suppression tactics. Keep fire east of established containment lines along Division Z and from and from crossing into MAP's. End State: Fire is contained within primary division boundaries and containment lines. Fire is mopped-up and cold trailed. All responders have safely returned from their assignments. Injuries to the public and responders were minimized. Park is reopened is safe for public use.								
7. Special Instructions: P24 ambulance will be staged at DP7. Watch Outs: Poison oak and poison sumac. Working around machinery. Use caution on narrow, windy roads. Steep, rugged terrain. Drought stressed trees and snags in fire area. Maintain situational awareness and ensure LCES. Remain aware of loose soil on hand and dozer lines as it presents footing concerns. The NPS repeaters are not to be used unless you cannot communicate on any of the command repeaters and there is an EMERGENCY.								
9. Division/Group Communication Summary: See Communications Plan								
Prepared by (Resource Unit Leader)		Approved by (Planning Section Chief)			Date	Time		
<i>Logan (RES) (T)</i>		<i>Anthony (RES)</i>			9/1/2020	2000		

DIVISION ASSIGNMENT LIST				1. Branch II		2. Division T		
3. Incident Name Woodward				4. Operational Period Date: 9/2/2020 Time: 0700 - 2000				
5. Operations Personnel								
Operations		Mike Granger, Brandon Cichowski, Joey Gallion (T), Bret Lewis (T)		Division Supervisor		Jonathan Moore		
Branch Director		Don Sorenson, Jess Register (T)		Safety Officer		Dan LeCrone, Shannon Bowman		
6. Resources Assigned this Period								
Strike Team/ Task Force/ Resource Designator	14 th Day	21 st Day	30 th Day	Leader	Number of persons	Drop off	Pick up	Comments
C-9 CRW2 3 B'S FORESTRY INC		9/5		MARLOW, MICHAEL	20	ICP	ICP	
E-3 T/F XMR 2141	9/2			DAGUE/ILLINGWORTH	22	DP7	DP7	2 T3 / 3 T1 Eng. Demob 1700
E-99 ENG6 B&B FIRE E-75	9/9			BAILEY, TIM	3	ICP	ICP	
E-103 ENG6 LITTLE PEND ORIELLE E-561	9/9			SCHNEIDER, RUSSELL	3	ICP	ICP	
E-101 ENG6 HI COUNTRY 1030	9/9			CONGER, JOHN	3	ICP	ICP	
E-95 ENG6 BIG STATE 65	9/9			TORRES, BRYAN	3	ICP	ICP	
E-102 ENG6 J3 ENGINE 10	9/9			STIGEN, ROBERT	3	ICP	ICP	
E-2 DOZ2 EMERSON	9/4			SHERILL, JOHN	2	ICP	ICP	
E-19 WT2 SNB 890	9/15				2	ICP	Station	
E-63 CHIP DUSTIN BROWN	9/10			WITHERS, DENNIS	2	ICP	ICP	
O-19 TFLD WATERS	9/4			WATERS, JECOBIE	1	ICP	ICP	
O-152 FMOD PAC. RIDGELINE	9/11			COATES, BRIAN	2	ICP	ICP	
O-91 SOF2 TESAR	9/7			TESAR, CHRIS	1	ICP	ICP	
O-161 REAF REINER	9/10			REINER, DAFNA	1	ICP	ICP	
O-162 ARCH WRIGHT	9/10			WRIGHT, JASON	1	ICP	ICP	
O-228 EMTF MEDIC	9/14			EMICK, DUSTIN	1	ICP	ICP	
6. Control Operations/Work assignments: Task: Ensure hazards are identified and mitigated prior to engaging in all actions. Mop up and secure edge of containment lines along DIV. Mop up to the extent necessary based upon site conditions, the values at risk, fuel bed receptiveness, and fire spread potential to make the likelihood of escape from containment lines minimal considering terrain, fuel types, and predicted weather and fire behaviors. Chip debris along Bear Valley Trail. Purpose: To keep fire west of Bear Valley Trail and Visitor center. End State: Fire is contained to the west of Bear Valley Trail and along dozer line to DIV T/E break. Values are protected around the Bear Valley Visitor Center.								
7. Special Instructions: P24 ambulance will be staged at DP7. Watch Outs: Poison oak and poison sumac. Working around machinery. Use caution on narrow, windy roads. Steep, rugged terrain. Drought stressed trees with snags in fire area. Maintain situational awareness and ensure LCES. The NPS repeaters are not to be used unless you cannot communicate on any of the command repeaters and there is an EMERGENCY. In Branch II, use Command 2 repeater from Bear Valley Trail to DP10 and use Command 3 repeater from DP10 to DP20.								
9. Division/Group Communication Summary See Communications Plan								
Prepared by (Resource Unit Leader) <i>Coody J. RESL (T)</i>		Approved by (Planning Section Chief) <i>Scott</i>			Date 9/1/2020	Time 2000		

DIVISION ASSIGNMENT LIST			1. Branch II		2. Division W			
3. Incident Name Woodward			4. Operational Period Date: 9/2/2020 Time: 0700 - 2000					
5. Operations Personnel								
Operations		Mike Granger, Brandon Cichowski, Joey Gallion (T), Bret Lewis (T)			Division Supervisor		Darren Bridges, Jacob Miller (T)	
Branch Director		Don Sorenson, Jess Register (T)			Safety Officer		Dan LeCrone, Shannon Bowman	
6. Resources Assigned this Period								
Strike Team/ Task Force/ Resource Designator	14 th Day	21 st Day	30 th Day	Leader	Number of persons	Drop off	Pick up	Comments
STG MRN 9151G		9/7		GILBERT, CHRIS	1	ICP	ICP	
C-5 TFC 1		9/7		GILBERT/BABIN	14	ICP	ICP	
C-6 TFC 2		9/7		TRIBULET/MASSUCCA	14	ICP	ICP	
C-21 CRW2IA FIRESTORM 1	9/3			LOWE, GRAHAM	20	ICP	ICP	
O-153 FMOD PAC. RIDGELINE	9/11			HOLSTAD, SAM	2	ICP	ICP	
O-91 SOF2 TESAR	9/7			TESAR, CHRIS	1	ICP	ICP	
O-161 REAF REINER	9/10			REINER, DAFNA	1	ICP	ICP	
O-162 ARCH WRIGHT	9/10			WRIGHT, JASON	1	ICP	ICP	
O-227 EMTF MEDIC	9/14			STEERS, KIRK	1	ICP	ICP	
6. Control Operations/Work assignments: Task: Burn out Baldy TR or tie in the line with burn out down to Bear Valley TR. Patrol handline between Coast TR to Baldy TR. Mitigate snags that may compromise line or are a safety hazard. Mop up to the extent necessary based upon site conditions, the values at risk, fuel bed receptiveness, and fire spread potential to make the likelihood of escape from containment lines minimal considering terrain, fuel types, and predicted weather and fire behaviors. Purpose: Prevent fire from crossing Bear Valley Trail and spreading to the south. Continue mop up along hand line. End State: Keep fire contained along handline from Coast TR to Baldy TR, Baldy TR to DP15 and along Bear Valley Trail from DP15 to DP10, while protecting values in the park and adjacent private property.								
7. Special Instructions: P24 ambulance will be staged at DP7. Watch Outs: Poison oak, poison sumac, stinging nettle, bees. Heightened awareness for fire weakened snags and draught stressed trees throughout the fire area, along hand line and Bear Valley TR. Working around machinery and felling operations. Use caution on narrow, windy roads. Steep, rugged terrain. Maintain Situational Awareness and ensure LCES. The NPS repeaters are not to be used unless you cannot communicate on any of the command repeaters and there is an EMERGENCY. In Branch II, use Command 2 repeater from Bear Valley Trail to DP10 and use Command 3 repeater from DP10 to DP20.								
9. Division/Group Communication Summary: See Communications Plan								
Prepared by (Resource Unit Leader)		Approved by (Planning Section Chief)			Date	Time		
<i>Code 2 (RESL) (T)</i>		<i>Kevin Hillman (SC20)</i>			9/1/2020	2000		

DIVISION ASSIGNMENT LIST		1. Branch STRUCTURE		2. Division STRUCTURE					
3. Incident Name Woodward		4. Operational Period Date: 9/2/2020 Time: 0700 - 2000							
5. Operations Personnel									
Operations	Mike Granger, Brandon Cichowski, Joey Gallion (T), Bret Lewis (T)		Division Supervisor	Kirk Kraft, Todd Overshiner (9/8)					
Branch Director	Roger Goldman, Chris Johnson (T)		Safety Officer	Dan LeCrone, Shannon Bowman					
6. Resources Assigned this Period									
Strike Team/ Task Force/ Resource Designator	14 th Day	21 st Day	30 th Day	Leader	Number of persons	Drop off	Pick up	Comments	
E-9 STC MRN 9152C		9/8		PAYNE, JOHN	16	DP7	DP7	5 Type 3 Engines	
6. Control Operations/Work assignments:									
Task: Maintain a common operating picture of community geography and infrastructure to inform incident resources responding to fire outside of main perimeter. Support ignition operations by catching spot fires and preventing fires from reaching values at risk. Maintain contact with Marin County Fire to receive daily strike team support for boost, when needed. Brief incoming resources with communications plan, fire status, LCES, and point of contact prior to engagement. Consider moving operations to Tac 3 when needed.									
Purpose: Resources are improving and holding indirect and direct line construction and aviation assets are supporting their efforts when air clears. If wildfire spreads into communities, incoming incident resources will need immediate access to structure assessments and community geography. If citizens keep situationally aware, they will be more prepared to evacuate when ordered.									
End State: Ensure wildfire risk to structures and community infrastructure is minimized, responders are familiar with community maps and geography, and landowners are educated on mitigation measures, fire information, and evacuation procedures. Incoming resources are briefed before engagement in populated areas. All resources are under command and control. Firefighters and landowners safety is maximized and property damage is minimized.									
7. Special Instructions:									
Incoming resources currently unassigned to the fire will be directed to staging at West Marin Elementary (11550 Shoreline Hwy) for an operational briefing with Structure Branch prior to engagement. Coordinate with DIVS that is igniting to familiarize adjoining forces with our location and capacity. Familiarize all structure protection resources with local agency evacuation status and protocols. Electronic evacuation zones and road maps for the immediate fire area are available via QR code on the cover of the IAP.									
The NPS repeaters are not to be used unless you cannot communicate on any of the command repeaters and there is an EMERGENCY.									
In Branch II, use Command 2 repeater from Bear Valley Trail to DP10 and use Command 3 repeater from DP10 to DP20.									
All water resupply should be from the hydrant at the end of Commodore-Webster Road in Point Reyes Station. It is identified in Collector and in Trello.									
9. Division/Group Communication Summary See Communications Plan									
Prepared by (Resource Unit Leader) <i>Cody L. RESULT</i>			Approved by (Planning Section Chief) <i>Scott</i>			Date 9/1/2020		Time 2000	

DIVISION ASSIGNMENT LIST			1. Branch		2. Division Night			
3. Incident Name Woodward			4. Operational Period Date: 9/2/2020 Time: 1800 - 0700					
5. Operations Personnel								
Operations		Tom Cable		Division Supervisor		Dale Schmidt (9/7)		
Branch Director				Safety Officer		Dan LeCrone, Shannon Bowman		
6. Resources Assigned this Period								
Strike Team/ Task Force/ Resource Designator	14 th Day	21 st Day	30 th Day	Number of persons	Number of persons	Drop off	Pick up	Comments
E-56 ENG3 CA-KNP E72	9/7			GRANO, ADRIAN	5	STSP	STSP	
E-113 ENG3 MARIN 965	9/6			NUNES, TOM	4	STSP	Station	
E-98 ENG4 GAYLORD MI 57B	9/11			CRIGIER, STEVEN	3	STSP	STSP	
E-123 ENG6 LONE WOLF E41	9/12			FLOCH, DARYL	3	STSP	STSP	
E-18 ENG6 H.B. FORESTRY		9/7		GONZALEZ, AARON	3	STSP	STSP	
E-17 ENG6 TRI-STATE FIRE	9/5			PIERCE, ROB	3	STSP	STSP	
E-124 ENG6 ARROWHEAD FORESTRY	9/12			HUNT, TYSON	3	STSP	STSP	
E-125 ENG6 METAL WORKS	9/13			ANDERSON, DAMON	3	STSP	STSP	
E-128 WT1 MOKELUMNE HILL 159	9/11			DELLORTO, MIKE	2	STSP	STSP	
<p>6. Control Operations/Work assignments: Task: Patrol and monitor fire control lines. Take actions to control any spots found. Mop up to the extent necessary based upon site conditions, the values at risk, fuel bed receptiveness, and fire spread potential to make the likelihood of escape from containment lines minimal considering terrain, fuel types, and predicted weather and fire behaviors. Purpose: Minimize the fire spread and protect the population along with private and public property by stopping the spread of fire into populated areas. End State: The fire is contained by adequate control lines. All responders safely returned from their assignments. Injuries to the public and responders were minimized. Community and the regional economy returned to normal. Infrastructure is intact.</p>								
<p>7. Special Instructions: Recon fire area for potential snags or other potential hazards prior to sunset. Notify fire communications of any emergency situation. The NPS repeaters are not to be used unless you cannot communicate on any of the command repeaters and there is an EMERGENCY. In Branch II, use Command 2 repeater from Bear Valley Trail to DP10 and use Command 3 repeater from DP10 to DP20.</p>								
<p>9. Division/Group Communication Summary See Communications Plan</p>								
Prepared by (Resource Unit Leader) <i>Cody Lee (RESU) (T)</i>			Approved by (Planning Section Chief) <i>Tom Miller PSC2 (T)</i>			Date 9/1/2020	Time 2000	

WIAIR OPERATIONS SUMMARY 220 v.3

Prepared By: Lori Clark, AOBD Prepared Date: 09/01/2020 Prepared Time: 2000

1. INCIDENT NAME: Woodward	2. OPS PERIOD DATE: 09/02/2020	START TIME: 0800	END TIME: 2000	(Petaluma) SUNRISE: 0641	SUNSET: 1937
-------------------------------	-----------------------------------	---------------------	-------------------	-----------------------------	-----------------

3. Risk Assessment Mitigations, Special Instructions, and Remarks:

TACTICAL SAFETY PAUSE TODAY – sometime before 1000. TODAY WE WILL TAKE A TAC PAUSE: The intent of the safety pause is to focus on items of concern to you or your crews. This would be a great time to share an experience that resonated with you in terms of safety. Remember, there are both good and bad experiences that help shape our safety behaviors. Sharing experiences generates discussion and is critical to learning.

Also: *Please take a moment of silence for pilots who have lost their lives supporting fire suppression activities this year.*

Attend Zoom Briefing daily at 0700; contact AOBD or ASGS with any follow-up questions

4. READY ALERT
MEDEVAC A/C
H-551 short haul/rappe
capable

5. TFR: # 07637 AREA BOUNDED BY
380552N/1225713W (POINT REYES VOR/DME
PYE268004.2) TO 380925N/1225042W (POINT
REYES VOR/DME PYE356004.8) TO
380540N/1224243W (POINT REYES VOR/DME
PYE066007.4) TO 380056N/1224058W (POINT
REYES VOR/DME PYE097009.6) TO
375628N/1224611W (POINT REYES VOR/DME
PYE134009.5) TO POINT OF ORIGIN SFC-
7000FT
Frequency: 125.5250
https://tfr.faa.gov/save_pages/notam_actual_0_7637.html

6. PERSONNEL	NAME	PHONE #	7. FREQUENCIES	Type	Freq.	8. FIXED-WING Avail/ Type/ Make-Model/ N#/ AIRTANKERS- Order through Air Attack
AOBD	Lori Clark	406-370-1710	TFR	AM	125.5250	
Deputy AOBD	Laura Barrett	208-983-8154	FW Air Tactical	FM TX/RX	170.3875	
ASGS -1	Kyle Stump	208-816-3141	RW Air Tactical	AM	132.725	
			A/G Primary	FM TX/RX	166.9375	
HEB1	On Order		A/G Secondary	FM RX/TX	166.600	HLCO Platform: AS350B3; N839PA
ATGS	John Pollard (199KQ) Travis Will	208-661-7706 208-841-1898	CALCORD (California On-Scene Coordination Frequency)	FM RX/TX	RX:156.0750 Tone:T6-156.7	ATGS AIRCRAFT: Kodiak 100; N199KQ (Santa Rosa) Order relief through Woodacre ECC 415-473-6717 E-Mail Costs to: 2020.woodward.finance@firenet.gov or colin.sorenson@firenet.gov
HLCO	Petaluma (069)	707-775-9816			TX: 156.0750	Helibase Records: petalumahb@gmail.com **password protected
UAS Operator	Joe Suarez	559-285-9128	Air Guard	FM RX/TX	168.625	All Maps/IAPs found on the ftp site. VISIBILITY CAMERAS: http://www.alertwildfire.org/northbay/?camera=Axis-Vision
HMGB-721HT	Shane Hagen	559-974-4500				* Aerial Ignition Plan (MASP) approved for use of helicopter or UAV for PSD operations
HMGB - H-510	Tyler Williams	530-592-8859	(Chester HT)			
HMGB - H-551	Heather Wonenberg	209-347-7546	(Yosemite HT)			

9. HELICOPTERS (Assigned)

FAA N#	TY	MAKE/ MODEL	BASE	AVAIL	REMARKS	FAA N#	T Y	MAKE/ MODEL	BASE	AVAIL	REMARKS
721HT	1	Sikorsky CH54B	Petaluma	0900	Tanked	UR335	3	Matrice 600	Reyes Point Station	0700	sUAS - mapping, IR, PSD capability
212BT	2	Bell 212HP	Petaluma	0900	Call sign H-510; Bucket						
N551HQ	2	Bell 205	Petaluma	0900	Call sign H-551; Short haul & rappel capable/ bucket						
						N386PA	3	AS350B3	Petaluma	0900	Limited- HLCO Platform Only

9.a Other Aircraft

ICS 220 Continued

10. TASK/ MISSION/ ASSIGNMENT (Type/ function includes: Air Tactical, Retardant, Recon, Personnel Transport, Bucket Operations, SAR, etc.)											
Aircraft			NAME OF PERSONNEL OR CARGO (if applicable) or instructions for tactical aircraft								
721HT, H-510, H-551				Water Drops as requested							
UR335				Mapping/IR/PSD as requested							
H-551				Aerial Ignition - PSD - as requested							

Helibase/Helisports/ dipsites											
Location NAME	LATITUDE	LONGITUDE	Elevation	HIGE/HOGE	REMARKS / HAZARDS						
BEAR VALLEY HELISPOT	38° 2.326'	122° 47.95'	40'	HOGG	@ VISITORS CENTER						
H1	38 02.41'	122 49.65'	1065'	HOGG	N SIDE OF FIRE						
DP 10	38 01.15'	122 48.05'	420'	HOGG							
TRIANGLE	38 06.65'	122 46.42'	743'	HOGG	Freshwater dipsite E of fire						
GREEN	38 03.89'	122 47.96'	541'	HOGG	Freshwater dipsite E of CK Dip						

INCIDENT RADIO COMMUNICATIONS PLAN

1. Incident Name: WOODWARD
 2. Date/ Time Prepared: 9/1/2020 1930
 3. Operational Period Date/Time: 9/2/2020 to 9/3/2020 0600-0600

Channel	DISPLAY	Frequency	Tone	Mode	Assignment	Remarks
1	CMD 1	Rx 169.7500 Tx 167.1000	167.9 167.9	N	DIV C	
2	CMD 2	Rx 167.9125 Tx 164.8125	167.9 167.9	N	DIV E/T	Bear Valley to DP10 Use CMD 2 ** Within ICP use CMD 2 **
3	CMD 3	Rx 172.9875 Tx 165.1500	167.9 167.9	N	DIV W/Z	DP10 to DP20 Use CMD 3
4	PRNSS LT	Rx 171.1625 Tx 164.0875	110.9 110.9	N	EMERGENCY USE	FOR EMERGENCY USE ONLY
5	PRNSS BR	Rx 169.7125 Tx 162.1625	110.9 110.9	N	EMERGENCY USE	FOR EMERGENCY USE ONLY
6	PRNSS PH	Rx 169.7750 Tx 163.3875	110.9 110.9	N	EMERGENCY USE	FOR EMERGENCY USE ONLY
7	TAC 1	Rx 168.0500 Tx 168.0500	167.9 167.9	N	DIV C	NIFC TAC 1
8	TAC 2	Rx 168.6000 Tx 168.6000	167.9 167.9	N	DIV E	NIFC TAC 3
9	TAC 3	Rx 166.7250 Tx 166.7250	167.9 167.9	N	STRUCTURE/NIGHT	NIFC TAC 5
10	TAC 4	Rx 166.7750 Tx 166.7750	167.9 167.9	N	DIV Z/T	NIFC TAC 6
11	TAC 5	Rx 168.2500 Tx 168.2500	167.9 167.9	N	DIV W	NIFC TAC 7
12		Rx Tx				
13	AG PRIMARY	Rx 166.9375 Tx 166.9375	NONE NONE	N	ALL DIVS	AIR TO GROUND
14	AG SECONDARY	Rx 166.6000 Tx 166.6000	NONE NONE	N	ALL DIVS	AIR TO GROUND
15	CALCORD	Rx 156.0750 Tx 156.0750	156.7 156.7	N	ALL DIVS	
16	AIRGUARD	Rx 168.6250 Tx 168.6250	NONE 110.9	N	ALL DIVS	Emergency Air Contact
17		Rx Tx				
18		Rx Tx				
19		Rx Tx				
20	AIRGUARD	Rx 168.6250 Tx 168.6250	NONE 110.9	N	ALL DIVS	Emergency Air Contact

Mode: W=Wideband Analog, N=Narrowband Analog, D=Digital, M=Mixed
 5. Prepared by (Communications Unit): Kary Mavencamp, COMML
 CONTROLLED UNCLASSIFIED INFORMATION

MEDICAL PLAN (ICS 206 WF)

Controlled Unclassified Information//Basic

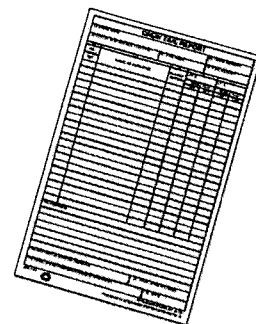
1. Incident/Project Name		2. Operational Period									
WOODWARD FIRE		9/2/20 0800 - 0800									
3. Ambulance Services											
Name	Address	Phone		Advanced Life Support (ALS)							
				Yes	No						
P-24 NorCal ALS	Staging Red Barn-Incident Ambulance	Command		Yes							
Marin County Fire M94	4 th and B. Pt Reyes CA	415-473-6717		Yes							
Marin County Fire M96	33 Castle Rock, Woodacre, CA	415-473-6717		Yes							
Marin County Fire M97	32 Belvedere Ave. Stinson Beach, CA	415-473-7235		Yes							
4. Air Ambulance Services											
Name	Phone	Type of Aircraft & Capability									
REACH 1	800-252-5050	Sonoma County Airport, 2200 Airport BLVD, Santa Rosa									
HENRY 1	707-565-22121	Sonoma County Airport, 2200 Airport BLVD, Santa Rosa									
5. Hospitals:											
Name Complete	GPS Coordinate Standard		Travel Time		Phone	Helipad Yes No	Level of care Facility				
	Lat:		Air	Gnd							
JOHN MUIR HEALTH Walnut Creek, CA	37° 56 .8682	Min.	Min.	925-939-5800	Yes <input checked="" type="checkbox"/>	No	Level 2				
	Long: 122° 32 .1681	15	50								
SANTA ROSA MEMORIAL Santa Rosa, CA	38° 5 .9618	Min.	Min.	707-525-5300	Yes <input checked="" type="checkbox"/>	No	Level 2				
	Long: 122° 33 .5887	15	45								
UC DAVIS MEDICAL CENTER Sacramento, CA	38° 0 .2621	Min. ²²⁰	Min	9167342011	Yes <input checked="" type="checkbox"/>	No	Level 1				
	Long: 122° 33 .2501		90								
<table style="width: 100%; border-collapse: collapse;"> <tr> <td style="width: 30%; vertical-align: top; padding: 5px;"> <ol style="list-style-type: none"> 1. YOU: Assign somebody to care for the victim to the best of their ability. 2. Radio: Woodward Communications 3. Initiate 8 Line in your IAP or IRPG 4. Severity; RED, Yellow, Green 5. Briefly describe emergency. 6. State exact location. 7. If you think that the victim may need AIR EVAC, ask for it. </td> <td style="width: 30%; vertical-align: top; padding: 5px;"> <ol style="list-style-type: none"> 1. DIVISION or TFLD: Designate Incident Commander of Incident Within an Incident-ICIWI to take command. 2. Initiate 8 Line Incident Report in IAP or IRPG. </td> <td style="width: 15%; vertical-align: top; padding: 5px;"> <ol style="list-style-type: none"> 1. MEDICAL: Div. Medic, go to site Assume patient care Communicate with ICIWI. </td> <td style="width: 25%; vertical-align: top; padding: 5px;"> <ol style="list-style-type: none"> 1. HELIBASE: Consider launching to site based on patient and size-up. Paramedic with ALS equipment Staging at Heli Base. </td> </tr> </table>								<ol style="list-style-type: none"> 1. YOU: Assign somebody to care for the victim to the best of their ability. 2. Radio: Woodward Communications 3. Initiate 8 Line in your IAP or IRPG 4. Severity; RED, Yellow, Green 5. Briefly describe emergency. 6. State exact location. 7. If you think that the victim may need AIR EVAC, ask for it. 	<ol style="list-style-type: none"> 1. DIVISION or TFLD: Designate Incident Commander of Incident Within an Incident-ICIWI to take command. 2. Initiate 8 Line Incident Report in IAP or IRPG. 	<ol style="list-style-type: none"> 1. MEDICAL: Div. Medic, go to site Assume patient care Communicate with ICIWI. 	<ol style="list-style-type: none"> 1. HELIBASE: Consider launching to site based on patient and size-up. Paramedic with ALS equipment Staging at Heli Base.
<ol style="list-style-type: none"> 1. YOU: Assign somebody to care for the victim to the best of their ability. 2. Radio: Woodward Communications 3. Initiate 8 Line in your IAP or IRPG 4. Severity; RED, Yellow, Green 5. Briefly describe emergency. 6. State exact location. 7. If you think that the victim may need AIR EVAC, ask for it. 	<ol style="list-style-type: none"> 1. DIVISION or TFLD: Designate Incident Commander of Incident Within an Incident-ICIWI to take command. 2. Initiate 8 Line Incident Report in IAP or IRPG. 	<ol style="list-style-type: none"> 1. MEDICAL: Div. Medic, go to site Assume patient care Communicate with ICIWI. 	<ol style="list-style-type: none"> 1. HELIBASE: Consider launching to site based on patient and size-up. Paramedic with ALS equipment Staging at Heli Base. 								
7. Name & Location		Remote Camp Location(s)									
8. Prepared By (Medical Unit Leader) Terry Stevenson		9. Date/Time 9/2/20		10. Reviewed By (Safety Officer) Dan Le Crone, Gerald Vickers		Date/Time 9/2/20					

Woodward Fire ICP

Phone List

SAFETY	415-488-4067
OPERATIONS	415-488-4029
AIR OPERATIONS	415-488-4032
DEMOB	415-488-4023
PLANS	415-488-4027
CHECK-IN	707-755-8380 / 415-488-4051
FINANCE	707-755-8486
ICP	415-488-4045
MEDICAL UNIT	406-788-8487

HOW TO SUBMIT YOUR TIME



Resources have three options:

1. Fill out your CTR/Shift Ticket, have your supervisor sign it, and Division will forward it to Planning Ops who will give it to Finance.
2. Fill out your CTR/Shift Ticket, have your supervisor sign it, take a picture of it, and email it to Finance with the word **Time** in the subject line: 2020.woodward.finance@firenet.gov.
3. Fill out an electronic CTR/Shift Ticket, email it to your supervisor to sign, and then email it to Finance with the word **Time** in the subject line: 2020.woodward.finance@firenet.gov.

Include a contact email and cell phone in the remarks!

Please do not wait to turn in your time. We never know when resources could be moved to a higher priority fire and that will really slow down the reassignment process. We want to make this as smooth as possible for you.

Note: Ensure your CTR or Shift ticket has a supervisor's signature and shows meal breaks.

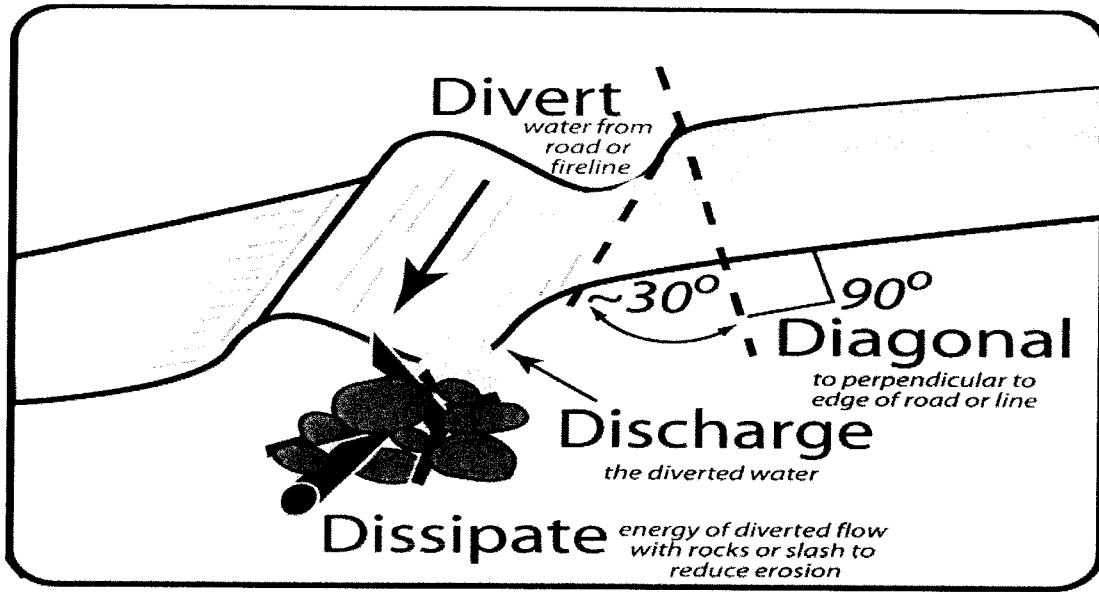
Thank you,

Your Finance Section

Picture of Poverty Flats Finance Section 1961 - →



READ Message: Waterbar Refresher



Dozerline

Handline

Fireline Gradient (% slope)	Distance Between Waterbars (feet)
0 to 10	200 or none required
10 to 20	100
21 to 40	75
41 to 60 ¹	50

Fireline Gradient (% slope)	Distance Between Waterbars ^(A) (feet)
0 to 10	250 or none required
10 to 20	200
21 to 40	75
41 to 60	50

DEPTH: Waterbars need to be cut *into* the ground surface.

- Waterbar depths for **dozerlines** should be at least 6 inches
 - Total height from bottom of ditch to the top of the waterbar should average at least 18 inches and not exceed 24 inches.
- Waterbar depths for **handlines** should be at least 4 inches.
 - Total height from bottom of ditch to top of waterbar should average at least 8 inches and not exceed 12 inches.

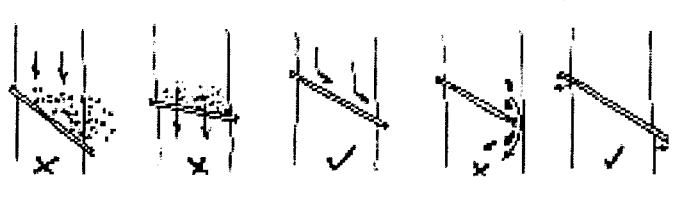


Figure 2 – Aerial view of Waterbar Do's and Don'ts

Woodward Fire Resource Advisor Message

WHENEVER POSSIBLE:

- ❑ Employ Minimal Impact Strategies and Tactics (MIST) when conducting operations in the Phillip Burton Wilderness.
- ❑ Avoid cutting any trees greater than 18 inches diameter at breast height or wildlife trees with large cavities or deformities
- ❑ Avoid bucket drops in freshwater ponds, wetlands, and streams

Consult with Fireline Resource Advisors (REAFs) before:

- ❑ working in an area flagged off with sensitive resource flagging
(yellow + red-polka dots)
- ❑ conducting fire operations in known noxious weed infestations
- ❑ transporting slash material beyond the area it was cut
- ❑ establishing new camps, staging areas, safety zones, helispots, etc.
- ❑ discharging water on roads or at stream crossings
- ❑ constructing dozerline within 100 feet of dry of stream channels

PLEASE PACK OUT ALL GARBAGE

**Thank you for your *commitment* and *dedication* in preserving
valuable natural and cultural resources**

09/02/2020

TENTATIVE RELEASE

WOODWARD US-CA-RNP-012009

EQUIPMENT

E-3	1500	(ES3)	TASK FORCE (LOCAL ONLY) -
E-20	1700	(WTT1)	WATER TENDER - TACTICAL -

OVERHEAD

O-97	0600	(EMPF)	BUI, CALVIN
O-11.77	0600	(THSP)	SIBOLD, HARRY EUGENE
O-11.40	0600	(COMP)	VERNON, SUZANNE

09/03/2020

TENTATIVE RELEASE

WOODWARD US-CA-RNP-012009

OVERHEAD

O-11.43	1800	(PSC1)	INGEBRETSON, JANE
---------	------	--------	-------------------

Woodward Fire

Demobilization Check-out

Due to Covid-19 safety precautions, we will be using virtual approvals instead of obtaining signatures on a paper copy of the ICS-221 form.

All departing resources will complete the Demobilization Check-out process by the contact methods listed below. The unit's approving official will notify the Demob unit of your clearance.

Weed Wash and SOD Decon Stations- located at Point Reyes Visitor Center

Supply - located near ICP entrance

Communications - located in the trailer at the west end of ICP main building

Facilities - window service at the east end of ICP main building on the lower level

Ground Support (vehicle inspections)- located at the east end of ICP parking lot

Time - contactless only service - submit all records to 2020.woodward.finance@firenet.gov

Documentation - Contactless only - submit all records to 2020.woodward.plans@firenet.gov

Demob - contactless only service - Please confirm ETAs prior to departing ICP using the QR code below to ensure that IROC will be accurately updated of your release from the incident.

****Any resource requiring commercial air travel, must make those arrangements with the Demob unit at least 72 hours in advance.****

Please contact the Demob Unit if you need assistance! Your feedback is welcome!

Rebecca Bulls

Demobilization Unit Leader (DMOB)

Northern Rockies Incident Management Team 2

Desk: 415-488-4023

Cell: 703-939-1932

2020.woodward.dmob@firenet.gov



Actual Release Data Entry



HUMAN RESOURCE MESSAGE

There is zero tolerance for drugs and alcohol on this fire incident.



Think before you speak.

**People can be more sensitive than
you imagine.**

This is especially true with age, cultural, geographic,
gender, and educational differences.

Be kind!

Debby Hassel, HRSP (*Virtual*)

(406) 274-7985

hrspfire@gmail.com

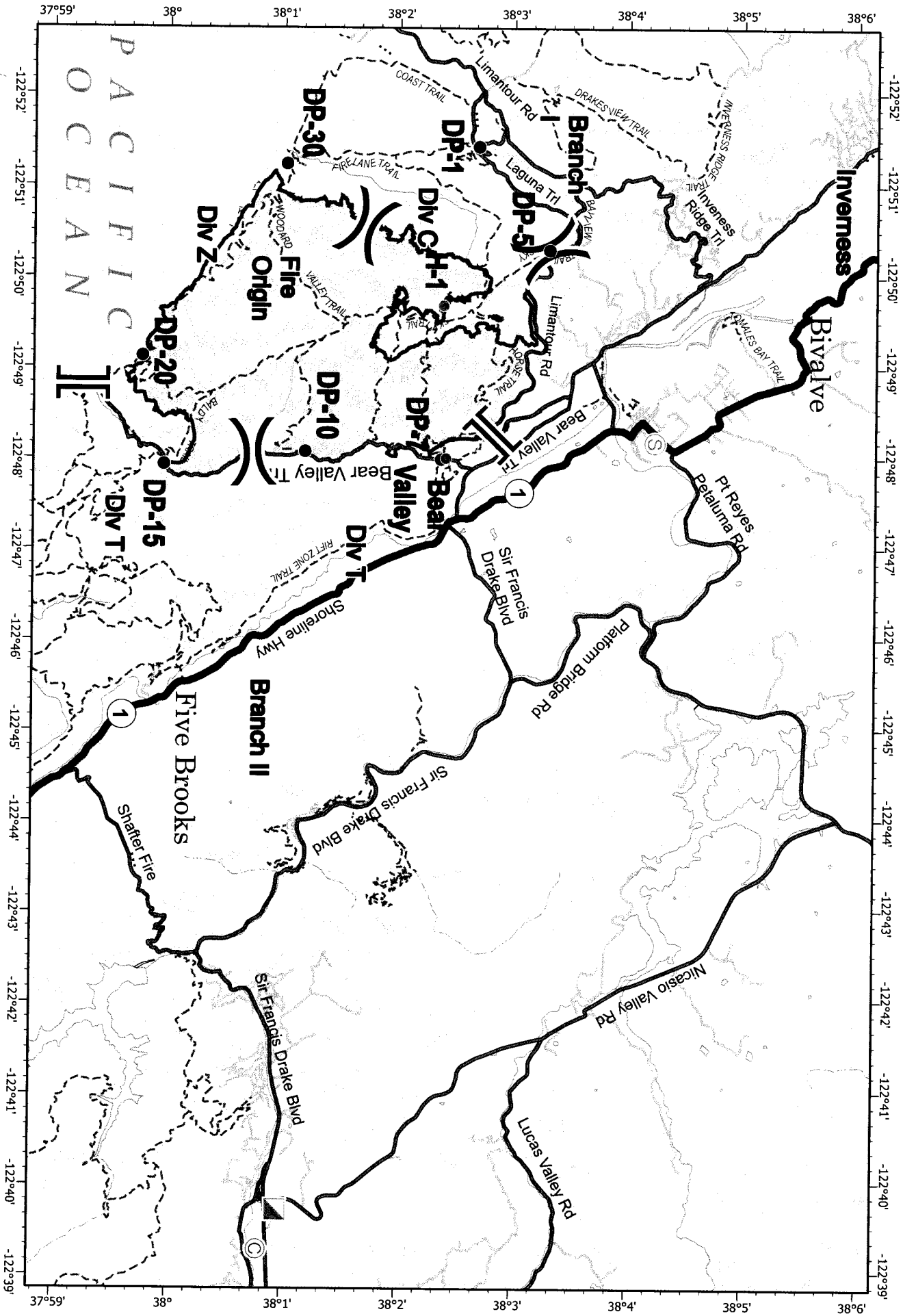
Woodward Fire Incident Training Program

A TNSP is assigned to this incident and will be performing the majority of duties "virtually".

To receive documented credit for your assignment, scan the QR Code below to access and complete the Trainee Registration Form. Once registered you will receive additional instructions via text. For training related questions, call Brad Smith (TNSP) at 209-770-4809 or email bsmith.murfire@gmail.com

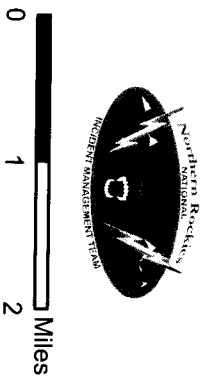


<https://forms.office.com/Pages/ResponsePage.aspx?id=4F2CSwVwPUuaFHhBHyhmAyNRz07Nxa9Bj-Jjhni43T9UOUtMOUhGQVA4QzlVWIFVRkJXTTg2RTJCMY4u>



Woodward
 CA-RNP-012009
 9/12/2020
 4,539acres
 Fire perimeter updated on 9/1/2020

- Transportation Map**
- Wildfire Daily Fire Perimeter
 - Incident Command Post
 - Highway
 - Local Road
 - Camp
 - Drop Point
 - Staging Area
 - Division Break
 - Branch Break
 - Trail



MEDICAL PLAN (ICS 206 WF)

Controlled Unclassified Information//Basic

Medical Incident Report																														
<p>FOR A NON-EMERGENCY INCIDENT, WORK THROUGH CHAIN OF COMMAND TO REPORT AND TRANSPORT INJURED PERSONNEL AS NECESSARY.</p> <p>FOR A MEDICAL EMERGENCY: IDENTIFY ON SCENE INCIDENT COMMANDER BY NAME AND POSITION AND ANNOUNCE "MEDICAL EMERGENCY" TO INITIATE RESPONSE FROM IMT COMMUNICATIONS/DISPATCH.</p>																														
<p>Use the following items to communicate situation to communications/dispatch.</p>																														
<p>1. CONTACT COMMUNICATIONS / DISPATCH (Verify correct frequency prior to starting report) <i>Ex: "Communications, Div. Alpha. Stand-by for Emergency Traffic."</i></p> <p>2. INCIDENT STATUS: Provide incident summary (including number of patients) and command structure. <i>Ex: "Communications, I have a Red priority patient, unconscious, struck by a falling tree. Requesting air ambulance to Forest Road 1 at (Lat./Long.) This will be the Trout Meadow Medical, IC is TFLD Jones. EMT Smith is providing medical care."</i></p>																														
Severity of Emergency / Transport Priority	<input type="checkbox"/> RED / PRIORITY 1 Life or limb threatening injury or illness. Evacuation need is IMMEDIATE <i>Ex: Unconscious, difficulty breathing, bleeding severely, 2^o - 3^o burns more than 4 palm sizes, heat stroke, disoriented.</i> <input type="checkbox"/> YELLOW / PRIORITY 2 Serious Injury or illness. Evacuation may be DELAYED if necessary. <i>Ex: Significant trauma, unable to walk, 2^o - 3^o burns not more than 1-3 palm sizes.</i> <input type="checkbox"/> GREEN / PRIORITY 3 Minor Injury or illness. Non-Emergency transport <i>Ex: Sprains, strains, minor heat-related illness.</i>																													
Nature of Injury or Illness & Mechanism of Injury			<i>Brief Summary of Injury or Illness (Ex: Unconscious, Struck by Falling Tree)</i>																											
Transport Request			<i>Air Ambulance / Short Haul/Hoist Ground Ambulance / Other</i>																											
Patient Location			<i>Descriptive Location & Lat. / Long. (WGS84)</i>																											
Incident Name			<i>Geographic Name + "Medical" (Ex: Trout Meadow Medical)</i>																											
On-Scene Incident Commander			<i>Name of on-scene IC of Incident within an Incident (Ex: TFLD Jones)</i>																											
Patient Care			<i>Name of Care Provider (Ex: EMT Smith)</i>																											
<p>3. INITIAL PATIENT ASSESSMENT: Complete this section for each patient as applicable (start with the most severe patient)</p> <p>Patient Assessment: See IRPG page 106</p> <p>Treatment:</p>																														
<p>4. TRANSPORT PLAN:</p> <p>Evacuation Location (if different): (Descriptive Location (drop point, intersection, etc.) or Lat. / Long.) Patient's ETA to Evacuation Location:</p> <p>Helispot / Extraction Site Size and Hazards:</p>																														
<p>5. ADDITIONAL RESOURCES / EQUIPMENT NEEDS:</p> <p><i>Example: Paramedic/EMT, Crews, Immobilization Devices, AED, Oxygen, Trauma Bag, IV/Fluid(s), Splints, Rope rescue, Wheeled litter, HAZMAT, Extrication</i></p>																														
<p>6. COMMUNICATIONS: Identify State Air/Ground EMS Frequencies and Hospital Contacts as applicable</p> <table border="1" style="width: 100%; border-collapse: collapse;"> <thead> <tr> <th style="width: 15%;">Function</th> <th style="width: 20%;">Channel Name/Number</th> <th style="width: 15%;">Receive (RX)</th> <th style="width: 15%;">Tone/NAC *</th> <th style="width: 15%;">Transmit (TX)</th> <th style="width: 20%;">Tone/NAC *</th> </tr> </thead> <tbody> <tr> <td>COMMAND</td> <td></td> <td></td> <td></td> <td></td> <td></td> </tr> <tr> <td>AIR-TO-GRND</td> <td></td> <td></td> <td></td> <td></td> <td></td> </tr> <tr> <td>TACTICAL</td> <td></td> <td></td> <td></td> <td></td> <td></td> </tr> </tbody> </table>							Function	Channel Name/Number	Receive (RX)	Tone/NAC *	Transmit (TX)	Tone/NAC *	COMMAND						AIR-TO-GRND						TACTICAL					
Function	Channel Name/Number	Receive (RX)	Tone/NAC *	Transmit (TX)	Tone/NAC *																									
COMMAND																														
AIR-TO-GRND																														
TACTICAL																														
<p>7. CONTINGENCY: Considerations: If primary options fail, what actions can be implemented in conjunction with primary evacuation method? Be thinking ahead.</p>																														
<p>8. ADDITIONAL INFORMATION: Updates/Changes, etc.</p>																														
<p>REMEMBER: Confirm ETA's of resources ordered. Act according to your level of training. Be Alert. Keep Calm. Think Clearly. Act Decisively.</p>																														