

WOODWARD INCIDENT CA-RNP-12009 (PPNF62) IAP

Saturday, September 5, 2020



Complacency

Numerous accidents have occurred due to allowing ourselves to become complacent in our everyday activity. Working safely is not easy, nor is it automatic. You have to work at it with the highest degree of awareness.

Stop for a moment and think of all the instances where you did become complacent. It happens to us because we perform many functions on an almost continuous basis. Many of our jobs are repetitive in nature, and the more we repeat what we are doing, the better the chance that we are becoming complacent without even realizing it. Therein lies the potential danger, the danger of complacency. We become complacent about our personal safety by repeated exposure to situations without consequence.

We take shortcuts and with the absence of consequences, cause us to become more lax about our personal safety, in other words we are becoming complacent.

Personal safety is not like a light switch that you can turn on or off. The personal safety switch must continuously be in the on position.

Just because we feel safe, does not mean we are safe. On the contrary, "feeling safe all the time", could be the biggest threat to our well being, because we are drifting into that complacent mode.

One key to avoid the complacency trap is to form "safety habits". Habits that you do over and over until they override your former unsafe behaviour and become automated.

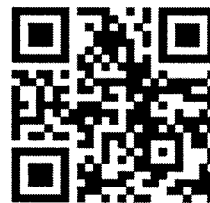
Lets work in a manner that we ensure we do not fall into the complacency trap.

COVID-19 Hotline (415) 246-4136

Signs of COVID-19

- New loss of smell or taste
- Fever
- Cough, shortness of breath
- Muscle pains/aches, More than normal
- Vomiting/diarrhea

Provides Access to IAP,
Incident maps, Incident
Briefings, Incident
evacuation plans, and
Checkin/Demob
informaton



Woodward Incident Links

Please submit photos and videos to 2020.woodward@fire.net

Blank

INCIDENT OBJECTIVES	1. INCIDENT NAME Woodward	2. DATE 9/4/2020	3. TIME 1930
<p>4. OPERATIONAL PERIOD</p> <p>Values of Concern:</p> <ul style="list-style-type: none"> • Neighboring communities and private residences including Inverness, Pt. Reyes Station, Sea Haven, Olema, Laguna, and park headquarters in Bear Valley, Ranches and Bolinas. • Mountain Vision Communication Site that serves the FAA, Marin County, NPS, and other entities. • High power transmission lines providing power to Novato and the Bay Area. • Highway 1 providing a main thoroughfare. • Many historic, natural, cultural and recreational values within the park including historic buildings and multiple T&E species. • Federally designated wilderness – Phillip Burton Wilderness. • Economic values associated with park partners, concessionaires, ranches and local businesses. <p>Management Objectives:</p> <ul style="list-style-type: none"> • Provide for emergency personnel and public safety at all times through the utilization of a deliberate risk-informed approach, with avenues for feedback from personnel. Also, ensure COVID-19 precautions and best practices are met by following agency, team and county guidance. • Ensure coordinated, timely and accurate release of public information. When possible utilize virtual platforms. • Foster and maintain relationships with the public, cooperators and stakeholders. • Maintain fiscal accountability by making good risk-informed decisions. <p>Operational Objectives:</p> <ul style="list-style-type: none"> • Under the full suppression strategy, utilize direct and indirect tactics to minimize fire size. As feasible, utilize minimum impact suppression tactics in the Phillip Burton Wilderness. • Protect the values of concern identified above by suppressing the wildfire, utilizing point protection of structures when necessary and strategies and tactics which result in minimal impact to resource values. • Identify and utilize primary and alternate containment opportunities considering risk, resource availability, and probability of success. • Cooperating with Marin County Fire Department, refine and further develop a population protection plan for the surrounding communities. <p>Commander's Intent:</p> <p>It is my expectation that we as an organization will meet the following Leader's Intent as well as the above objectives:</p> <ul style="list-style-type: none"> • TASK: Ensure all incident strategies and actions reflect a commitment to public, responder, and aviation safety through using the risk management process as outlined in the IRPG and the aviation risk assessment process. If you cannot mitigate a tactical hazard to an acceptable level of risk, do not implement the corresponding tactical action until such time as the risk can be satisfactorily mitigated before re-engaging. Ensure that Commanders intent is clearly communicated and understood. PURPOSE: To manage risk in all incident actions. END STATE (Outcome): No serious illnesses, injuries or deaths. • TASK: Coordinate incident management activities with our requesting and cooperating agencies including but not limited to suppression actions and support needs. PURPOSE: To ensure incident management activities are aligned with the overall goals and direction provided by the requesting and cooperating agencies. END STATE (Outcome): The mission assignment is resolved to the satisfaction of requesting and cooperating agencies. • TASK: Coordinate closely with resource advisors, or designated agency representative, on all operational activities. PURPOSE: To ensure that suppression impacts to natural and cultural resources are kept to a minimum. END STATE (Outcome): To the greatest extent feasible, resource values have received no detrimental impacts. • TASK: Treat all incident personnel, cooperators, and local publics with dignity and respect creating a "no tolerance" atmosphere for harassment, alcohol, or illegal drug use. PURPOSE: To create an environment that is based on solid relationships and is conducive to efficient accomplishments. END STATE (Outcome): All people associated with the incident felt valued and were able to contribute to a positive outcome in the management of the incident. 			
8. Attachments: SEE ATTACHED			
9. PREPARED BY (PLANNING SECTION CHIEF) <i>IS/ Trini Garrison</i>	10. APPROVED BY (INCIDENT COMMANDER) <i>IS/ Doug Turman</i>		

ORGANIZATION ASSIGNMENT LIST (ICS 203)

1. Incident Name: Woodward		2. Operational Period: Date From: 9/5/2020		Date To: 9/6/2020	
		Time From: 0800		Time To: 0800	
3. Incident Commander(s) and Command Staff:			7. Operation Section:		
IC/UC's	Doug Turman, Scott Schuster (T), Aaron Thompson (T)	Operations	Mike Granger, Brandon Cichowski, Joey Gallion (T), Bret Lewis (T)		
Deputy	Wally Bennett	Deputy Operations			
Safety Officer	Dan LeCrone, Shannon Bowman	Night Ops			
Information Officer	Mary Rasmussen, Kimberly Nelson (Virtual)	Staging Area			
Liaison Officer	Cornie Hudson, Licette Hammer (T), Jason Brey (T)	Branch	I	Eric Kurtz, Greg Campbell (T)	
Covid Taskforce		Division/Group	C	Jonathan Clark	
LOFR	Anna Stull	Division/Group	E	Kevin Beck	
Safety Officer	Todd Payne	Division/Group	Z	Keith Kelley	
4. Agency/Organization Representatives:					
Agency/Organization	Name				
NPS	Dan Foster				
Point Reyes National Seashore Park Sup	Carey Feierabend				
MRN Line Officer	Jordan Reeser				
Marin County OES	Woody Baker-Cohn	Branch	II	Don Sorensen, Jess Register (T)	
Marin County Sheriff	Brenton Schneider	Division/Group	T	Jonathan Moore	
DPW	Michael Frost	Division/Group	W	Darren Bridges, Jacob Miller (T)	
CHP					
Bolinas Fire	George Krakauer				
Inverness Fire	Jim Fox				
Marin H&HS	Dr. Lisa Santora	Branch			
Marin Humane	Cindy Machchado	Division/Group	Group	Chris Johnson	
PG&E	Jim Wickham				
5. Planning Section:		Branch	Night		
Chief	Trini Garrison, Garrett Schairer (T)	Division/Group	Night	Dale Schmidt	
Resource Unit	Cody Lamb (T)				
Situation Unit	Valentijn Hoff, Andy Reed (T)				
Resource Adviser	Cedar Drake				
Demobilization Unit	Rebecca Bulls				
LTAN	Tim Bumgarner				
GIS Unit	Steve Snell, Mike Assenmacher (T), Jessica Zarate (T) (Virtual)				
Fire Behavior	Warren Appelhans, Jon Trapp				
Meteorologist	Jeremy Michael				
Air Resource Advisor	Jill Webster				
Status/Check In	Rita Bennett (T)	Air Operations Branch		Director: Lori Clark	
ITSS	Dennis Schultz, Geri Mason (Virtual)	Air Support Group Supervisor		Laura Barrett, Kyle Stump (T)	
Training Specialist	Brad Smith (Virtual)	Helibase Manager			
Documentation Leader	Alicia Thomas (T)				
HRSP	Debby Hassel (Virtual)				
6. Logistics Section:			8. Finance/Administration Section:		
Chief	Ruth Lewis, Harv Skjerven, Ryan Pitts (T)	Chief	Sarah Lee, Deanna Crawford (T)		
Supply Unit	Steve Blatt	Time Unit	Amy Irwin, Ryan Patrick (T) (Virtual)		
Facilities Unit	Shawn Heinert	Procurement Unit			
Ground Support Unit	Don Despain, Charles Long (T)	Comp/Claims Unit	Erin Lally (T)		
Communications Unit	Kary Mavencamp, John Beck (T)	Cost Unit	Colin Sorenson (Virtual)		
Medical Unit	Terry Stevenson				
Food Unit	Heather Mclean				
Prepared By: Name:	Trini Garrison, Jane Ingebretson	Position/Title:	PSC	Signature:	<i>Trini Garrison</i>
ICS 203		Date/Time:	9/4/2020	2300 hours	NIMS IAP



Woodward Fire Weather Forecast



FORECAST NO: 12
PREDICTION FOR: Saturday Day/Night
SHIFT DATE: 9/05
FORECAST ISSUED: 9/04/2020 at 2000

NAME OF FIRE: Woodward
UNIT: CA-RNP
SIGNED: Jeremy Michael
Incident Meteorologist

WEATHER DISCUSSION: Very hot and dry weather will lead to a Critical Fire Weather day. Any marine layer will quickly erode with early clearing. Due to the very shallow or eroded marine layer, a warm and dry night are expected, especially on the ridges. Winds will be breezy from the northwest from late afternoon into the evening. Overnight winds may become northeast or east. This will allow for dry air to mix down to the ridges. Strong high pressure will remain in the area through at least Monday with hot, dry, and breezy weather. Relief is expected by mid-week as the ridge relaxes and the marine layer returns to moderate critical fire weather conditions.

WEATHER FORECAST SATURDAY: ***Critical Fire Weather***

WEATHER: Any stratus/fog will clear by mid-morning. Hot and dry with breezy afternoon northwest winds.

TEMPERATURES: Highs 65-75 coast and 80-95 inland/ridges. ***Take Heat Precautions***

HUMIDITY: 50-65% coast and 20-35% inland/ridges.

20 FT WINDS: Terrain driven/light in the morning. NW 7-12 mph, gusts up to 22 mph.

MARINE LAYER DEPTH/TIMING: Around 0-300 ft., eroding in 0800-1000 hrs.

SATURDAY NIGHT: ***Critical Fire Weather***

WEATHER: Drying and warming with breeziness across the ridges.

TEMPERATURES: 55-65 coast/valleys and 65-73 mid-slopes/ridges.

HUMIDITY: Coast/Valley: 75-90%. Ridges/Mid-Slopes: 25-40%

20 FT WINDS: Ridgetops NW 8-13 mph, gusts to 20 mph. Shifting NE to E 3-8 mph, gusts to 15 mph.

MARINE LAYER DEPTH/TIMING: Around 0-300 ft. Marine layer very shallow or eroded; confined to coast.

EXTENDED FORECAST: ***Critical Fire Weather Sunday and Monday***

SUNDAY AND SUNDAY NIGHT: Marine layer 0-300 ft., eroding 0800-1000 hrs. Highs 70-80°F coast, 80-95°F inland, near 100°F in Olema Valley. Min RH 25-40%. Higher RH near coast. Generally NW 6-12 mph, gusts to 20 mph. Min Temps 55-70°F. Max RH valleys 50-80%; ridgetops above marine layer as low as 15-30%

MONDAY AND TUESDAY: Marine layer 300-800 ft. Highs 65-80°F coast, 80-90°F inland, as high as 95°F in Olema Valley. Min RH 30-45%. Overnight lows 55-65°F. Overnight RH 50-80% valleys/coast and 25-40% ridgetops. NW winds, breezy across ridgetops.

Location Definitions: Inland = Div. Echo and Tango, northern Div. Charley and northern Div. Whiskey.
Coast = Div. Zulu, southern Div. Whiskey and southern Div. Charley.

Please submit observations to IMET/FBAN or text observations to (304) 886-2331

FIRE BEHAVIOR FORECAST

FORECAST NUMBER: # 14

TYPE OF FIRE: Wildland Fire

FIRE NAME: Woodward

OPERATIONAL PERIOD: Day 09/5/2020

DATE ISSUED: 9/4/2020

TIME ISSUED: 2000

UNIT: Point Reyes National Seashore

SIGNED: /S/ *Jon Trapp* (FBAN)

INPUTS

WEATHER SUMMARY:

See attached Fire Weather Forecast

OUTPUTS

FIRE BEHAVIOR

GENERAL:

* Increased fire activity today *

Stay alert to factors that contribute to increased fire activity:

- 1) Dissipation of the marine layer – ***Very little marine layer influence today***
- 2) Look for slopes where sunlight penetrates to the ground and start heating fuels - ***Lots of sunlight today***
- 3) Pay attention to the division hourly weather observations – Fire activity has been picking up when RH is below 60% - ***Minimum RH expected to be 30%***
- 4) Watch for wind and slope alignment.

SPECIFIC:

All divisions have moved into mop up and patrol. Any heat near the control lines will show itself today. Unburned fuels will be available for consumption with active fire behavior expected before 1200. Watch for isolated torching in the interior.

AIR OPERATIONS:

Air operations should not be impacted by the marine layer today.

SAFETY

Stay alert to changing fire conditions. Don't be complacent until you are safely at home.

SAFETY MESSAGE

September 5TH, 2020

Personal actions describe safety more effectively than written plans or rulebooks.
Firefighter actions tell you what they consider important.

HAZARDS, RISKS, CONCERNS

1. **DEMOB DREAMS:**

A successful assignment ends when you walk through your front door. Please continue to focus on your responsibilities...to yourself, to your fellow firefighters, and to your family. You may be on the demob, others are not. They are still counting on you to do your job safely and effectively.

2. **HEAT ILLNESS:**

What are some of the signs and symptoms?

The common ones are headache, loss of hunger, loss of thirst for water or fluids. Also include fatigue mentally and physically, not as sharp and responsive, being more prone to injury and a little more sluggish and less responsive to your environment/circumstances.

Add nausea, vomiting, weakness, lightheadedness, and a decrease or loss of sweating to the list

3. **TRANSPORTATION:**

Driving continues to be one of our highest hazards that we undertake. Drive slowly and be defensive & courteous. Use the 3 second rule in following vehicles. Use chock blocks.

Please ensure that you or the driver are alert, and focused on driving. Be alert for changing road surface conditions.

4. **SAFETY:**

Safety is an attitude based on awareness of your environment and capabilities.

Decision making (at all levels) represents one human characteristic that can greatly influence your safety and effectiveness. All personnel are responsible for adhering to safe practices & correcting violations. Accidents are the result of inadequate assessments of hazards.

RISK RULES OF MANAGEMENT

1. Things that go wrong in life are highly predictable.
2. If it's predictable it's preventable.
3. If you prevent it. Life is good for all.

Turman's Safety Team Northern Rockies Team 2

DIVISION ASSIGNMENT LIST				1. Branch I	2. Division C				
3. Incident Name Woodward				4. Operational Period Date: 9/5/2020 Time: 0700-2000					
5. Operations Personnel									
Operations		Mike Granger, Brandon Cichowski, Joey Gallion (T), Bret Lewis (T)			Division Supervisor		Jonathan Clark		
Branch Director		Eric Kurtz, Greg Campbell (T)			Safety Officer		Dan LeCrone, Shannon Bowman		
6. Resources Assigned this Period									
Strike Team/ Task Force/ Resource Designator	14 th Day	21 st Day	30 th Day	Leader	Number of persons	Drop Off	Pick up	Comments	
A-11 CHESTER HELITACK				HUTCHISON, JOSH	9	DP5	Petaluma		
CA-KNP E72 HAND CRW MOD	9/7			GRANO, ADRIAN	5	ICP	ICP		
E-127 WT1 JACKSON VALLEY 6140	9/11			MAKEMSON, RANDY	2	ICP	ICP		
E-138 WT2 MI WUK FD 777	9/12			SWANSON, DONALD	2	ICP	ICP		
O-72 EMPF MEDIC		9/11		O'CONNOR, JAMES	1	ICP	ICP		
O-11.62 SOF2 LOVAN	9/7			LOVAN, STAN	1	ICP	ICP		
O-89 REAF SULLIVAN	9/10			SULLIVAN, CHRISTINE	1	ICP	ICP		
O-161 REAF REINER	9/9			REINER, DAFNA	1	ICP	ICP		
O-162 ARCH WRIGHT	9/11			WRIGHT, JASON	1	ICP	ICP		
O-237 REAF THEIS	9/17			THEIS, SUSAN	1	ICP	ICP		
6. Control Operations/Work assignments: Task: Hold and mop up control lines. Utilize the hose lay supplied by portable pumps on the top of the Division to support hose lay to secure perimeter. Insert water bars on handline to meet specifications outlined in IAP. Maintain situational awareness to provide for firefighter safety throughout the shift. Mop up to the extent necessary based upon site conditions, the values at risk, fuel bed receptiveness, and fire spread potential to make the likelihood of escape from containment lines minimal considering terrain, fuel types, and predicted weather and fire behaviors. Purpose: Minimize the fire spread and protect the population along with private and public property by stopping the spread of fire north/west into populated areas. End State: The fire is contained by adequate control lines. All responders safely returned from their assignments. Injuries to the public and responders were minimized. Community and the regional economy returned to normal. Infrastructure remains intact.									
7. Special Instructions: ALS ground ambulance will be available from Point Reyes Station if needed. Continue implementing suppression repair priorities, as identified by the Resource Advisors. The NPS repeaters are not to be used unless you cannot communicate on any of the command repeaters and there is an EMERGENCY.									
9. Division/Group Communication Summary: See Communications Plan									
Prepared by (Resource Unit Leader) <i>Cody [Signature] (RESL) (T)</i>				Approved by (Planning Section Chief) <i>[Signature] PSC2 (T)</i>			Date 9/4/2020	Time 2000	

DIVISION ASSIGNMENT LIST				1. Branch I		2. Division E				
3. Incident Name Woodward				4. Operational Period Date: 9/5/2020 Time: 0700 - 2000						
5. Operations Personnel										
Operations		Mike Granger, Brandon Cichowski, Joey Gallion (T), Bret Lewis (T)			Division Supervisor		Kevin Beck			
Branch Director		Eric Kurtz, Greg Campbell (T)			Safety Officer		Dan LeCrone, Shannon Bowman			
6. Resources Assigned this Period										
Strike Team/ Task Force/ Resource Designator	14 th Day	21 st Day	30 th Day	Leader	Number of persons	Drop off	Pick up	Comments		
E-125 ENG6 METAL WORKS	9/13			ANDERSON, DAMON	3	ICP	ICP			
E-126 ENG6 PEANUT PIE #	9/12			GOOD GUN, DALE	3	ICP	ICP			
E-100 ENG6 DIAMOND 628 #	9/9			WESLET, TOM	3	ICP	ICP			
O-201 TREE GUYS FALLER MOD #3	9/9			ULMANN, WESLEY	2	ICP	ICP			
O-11.62 SOF2 LOVAN	9/7			LOVAN, STAN	1	ICP	ICP			
O-72 EMPF MEDIC		9/11		O' CONNOR, JAMES	1	ICP	ICP			
O-89 REAF SULLIVAN	9/10			SULLIVAN, CHRISTINE	1	ICP	ICP			
O-161 REAF REINER	9/9			REINER, DAFNA	1	ICP	ICP			
O-162 ARCH WRIGHT	9/11			WRIGHT, JASON	1	ICP	ICP			
O-237 REAF THEIS	9/17			THEIS, SUSAN	1	ICP	ICP			
6. Control Operations/Work assignments: Task: Mop up to the extent necessary based upon site conditions, the values at risk, fuel bed receptiveness, and fire spread potential to make the likelihood of escape from containment lines minimal considering terrain, fuel types, and predicted weather and fire behaviors. Mitigate snags that may compromise line or are a safety hazard. Patrol and monitor containment lines, locating any potential problem areas that may have due to changes in weather conditions. Employ MIST when conducting fire operations in the Phillip Burton Wilderness. Purpose: To minimize the fire spread and protect the population along with private and public property by stopping the spread of fire north into populated areas. End State: The fire is contained by adequate control lines. All responders have safely returned from their assignments. Injuries to the public and responders were minimized. The community and the regional economy returned to normal. Infrastructure remains intact.										
7. Special Instructions: ALS ground ambulance will be available from Point Reyes Station if needed. Identify potential medical evacuation spots and clear with air ops. The NPS repeaters are not to be used unless you cannot communicate on any of the command repeaters and there is an EMERGENCY. # Identified as a structure protection resource, if needed										
9. Division/Group Communication Summary: See Communications Plan										
Prepared by (Resource Unit Leader) <i>Cody Clark (RESL) (T)</i>				Approved by (Planning Section Chief) <i>Handwritten Signature (PSC20)</i>			Date 9/4/2020		Time 2000	

DIVISION ASSIGNMENT LIST				1. Branch I		2. Division Z		
3. Incident Name Woodward				4. Operational Period Date: 9/5/2020 Time: 0700 - 2000				
5. Operations Personnel								
Operations		Mike Granger, Brandon Cichowski, Joey Gallion (T), Bret Lewis (T)		Division Supervisor		Keith Kelley		
Branch Director		Eric Kurtz, Greg Campbell (T)		Safety Officer		Dan LeCrone, Shannon Bowman		
6. Resources Assigned this Period								
Strike Team/Task Force/Resource Designator	14 th Day	21 st Day	30 th Day	Leader	Number of persons	Drop off	Pick up	Comments
C-20 SHINGLE SPRINGS HC2IA	9/8			TAYAB, JOHN	17	ICP	ICP	
C-27 TORRES CONTRACTING		9/8		MIRANDA, OSCAR	20	ICP	ICP	
O-123 TFLD TODD BREININGER	9/8			BREININGER, TODD	1	ICP	ICP	
O-11.62 SOF2 LOVAN	9/7			LOVAN, STAN	1	ICP	ICP	
O-72 EMPF MEDIC		9/11		O'CONNOR, JAMES	1	ICP	ICP	
6. Control Operations/Work assignments: Task: Monitor, patrol, and mop-up along containment lines to strengthen, secure, and hold lines with Division Z. Back-haul hose and equipment no longer needed within Division. Continue construction of water bars where needed along containment lines to minimize erosion potential. Purpose: Strengthen and hold containment lines through mop-up efforts. Keep fire east of established containment lines along Division Z and from and from crossing into MAP's. Mitigate erosion with water bars and features to dissipate water flow along containment lines. End State: Fire is contained, mopped-up and cold-trailed within primary containment lines. Erosion potential is mitigated. All responders have safely returned from their assignments. Injuries to the public and responders were minimized. Park is reopened is safe for public use.								
7. Special Instructions: ALS ground ambulance will be available from Point Reyes Station if needed. Remain aware of loose soil on hand and dozer lines as it presents footing concerns. The NPS repeaters are not to be used unless you cannot communicate on any of the command repeaters and there is an EMERGENCY. Continue implementing suppression repair priorities, as identified by the Resource Advisors. Install water bars to mitigate soil erosion potential.								
9. Division/Group Communication Summary: See Communications Plan								
Prepared by (Resource Unit Leader)		Approved by (Planning Section Chief)			Date	Time		
<i>Andy RL (RESL) (T)</i>		<i>Scott (SCPT)</i>			9/4/2020	2000		

DIVISION ASSIGNMENT LIST				1. Branch II		2. Division T			
3. Incident Name Woodward				4. Operational Period Date: 9/5/2020 Time: 0700 - 2000					
5. Operations Personnel									
Operations		Mike Granger, Brandon Cichowski, Joey Gallion (T), Bret Lewis (T)			Division Supervisor		Jonathan Moore		
Branch Director		Don Sorensen, Jess Register (T)			Safety Officer		Dan LeCrone, Shannon Bowman		
6. Resources Assigned this Period									
Strike Team/ Task Force/ Resource Designator		14 th Day	21 st Day	30 th Day	Leader	Number of persons	Drop off	Pick up	Comments
C-9 CRW2 3 B'S FORESTRY INC			9/5		MARLOW, MICHAEL	20	ICP	ICP	
E-99 ENG6 B&B FIRE E-75 #		9/9			BAILEY, TIM	3	ICP	ICP	
E-101 ENG6 HI COUNTRY 1030		9/9			CONGER, JOHN	3	ICP	ICP	
E-95 ENG6 BIG STATE 65 #		9/9			TORRES, BRYAN	3	ICP	ICP	
E-123 ENG6 LONE WOLF E41		9/12			POITRAS, DAN	3	ICP	ICP	
E-124 ENG6 ARROWHEAD FORESTRY		9/12			HUNT, TYSON	3	ICP	ICP	
E-102 ENG6 J3 ENGINE 10		9/9			STIGEN, ROBERT	3	ICP	ICP	
E-19 WT2 SNB 890		9/15			FERRARI, NICK	2	ICP	Station	
E-63 CHIP DUSTIN BROWN		9/10			WITHERS, DENNIS	2	ICP	ICP	
O-152 FMOD PAC. RIDGELINE		9/11			COATES, BRIAN	2	ICP	ICP	
O-11.36 SOF2 KRAFT		9/11			KRAFT, KIRK	1	ICP	ICP	
O-159 REAF KEELER		9/9			KEELER, KEVIN	1	ICP	ICP	
O-146 REAF WENDE REHLAENDER		9/17			REHLAENDER, WENDE	1	ICP	ICP	
O-162 ARCH WRIGHT		9/10			WRIGHT, JASON	1	ICP	ICP	
O-228 EMTF MEDIC		9/14			EMICK, DUSTIN	1	ICP	ICP	
6. Control Operations/Work assignments: Task: Ensure hazards are identified and mitigated prior to engaging in all actions. Mop up and secure edge of containment lines along Division. Mop up to the extent necessary based upon site conditions, the values at risk, fuel bed receptiveness, and fire spread potential to make the likelihood of escape from containment lines minimal considering terrain, fuel types, and predicted weather and fire behaviors. Conduct suppression repair, mitigate hazard trees, and chip debris along Division firebreaks. Purpose: To keep fire west of Bear Valley Trail and Visitor center. Reduce overhead hazards to the extent needed to allow for mop up crews and vehicle traffic to operate safely. End State: Fire is contained to the west of Bear Valley Trail and along dozer line to Division T/E break. Values are protected around the Bear Valley Visitor Center.									
7. Special Instructions: # E95 & E99 identified for structure group if requested ALS ground ambulance will be available from Point Reyes Station if needed. The NPS repeaters are not to be used unless you cannot communicate on any of the command repeaters and there is an EMERGENCY. In Branch II, use Command 2 repeater from Bear Valley Trail to DP10 and use Command 3 repeater from DP10 to DP20. Continue implementing suppression repair priorities, as identified by the Resource Advisors.									
9. Division/Group Communication Summary See Communications Plan									
Prepared by (Resource Unit Leader) <i>Cody El (RESL) (T)</i>			Approved by (Planning Section Chief) <i>Paul Blum PSCJ (T)</i>			Date 9/4/2020		Time 2000	

DIVISION ASSIGNMENT LIST		1. Branch II	2. Division W						
3. Incident Name Woodward		4. Operational Period Date: 9/5/2020 Time: 0700 - 2000							
5. Operations Personnel									
Operations	Mike Granger, Brandon Cichowski, Joey Gallion (T), Bret Lewis (T)		Division Supervisor	Darren Bridges, Jacob Miller (T)					
Branch Director	Don Sorensen, Jess Register (T)		Safety Officer	Dan LeCrone, Shannon Bowman					
6. Resources Assigned this Period									
Strike Team/ Task Force/ Resource Designator	14 th Day	21 st Day	30 th Day	Leader	Number of persons	Drop off	Pick up	Comments	
C-21 CRW2IA FIRESTORM 1		9/10		LOWE, GRAHAM	20	ICP	ICP		
E-130 ENG6 HYGIENE 2832	9/16			PALESTRO, RICH	3	ICP	ICP		
E-103 ENG6 LITTLE PEND ORIELLE E-561	9/9			SCHNEIDER, RUSSELL	3	ICP	ICP		
O-153 FMOD PAC. RIDGELINE	9/11			HOLSTAD, SAM	2	ICP	ICP		
O-91 SOF2 TESAR	9/7			TESAR, CHRIS	1	ICP	ICP		
O-159 REAF KEELER	9/9			KEELER, KEVIN	1	ICP	ICP		
O-146 REAF REHLAENDER	9/17			REHLAENDER, WENDE	1	ICP	ICP		
O-162 ARCH WRIGHT	9/10			WRIGHT, JASON	1	ICP	ICP		
O-227 EMTF MEDIC	9/14			STEERS, KIRK	1	ICP	ICP		
6. Control Operations/Work assignments:									
Task: Mitigate any snags along Bear Valley Trail between DP15 and W/T break that may compromise line or are a safety hazard. Monitor for spot fires and sloop overs along fire perimeter. Patrol handline between Coast Trail to Baldy Trail. Mop up Bear Valley/Baldy Trail to the extent necessary based upon site conditions, the values at risk, fuel bed receptiveness, and fire spread potential to make the likelihood of escape from containment lines minimal considering terrain, fuel types, and predicted weather and fire behaviors.									
Purpose: Prevent fire from crossing Bear Valley Trail and spreading to the south. Secure fire perimeter to achieve containment.									
End State: Keep fire contained along handline from Coast Trail to Baldy Trail, Baldy Trail to DP15, and along Bear Valley Trail from DP15 to W/T Division break. Protect values in the park and adjacent private property. Have Division secured and mopped up sufficiently for transition to incoming team.									
7. Special Instructions:									
ALS ground ambulance will be available from Point Reyes Station if needed.									
9. Division/Group Communication Summary:									
See Communications Plan									
Prepared by (Resource Unit Leader) <i>[Signature]</i> (RESL)(T)			Approved by (Planning Section Chief) <i>[Signature]</i> (SCU)			Date 9/4/2020		Time 2000	

DIVISION ASSIGNMENT LIST	1. Branch	2. Division STRUCTURE GROUP
---------------------------------	-----------	------------------------------------

3. Incident Name Woodward	4. Operational Period Date: 9/5/2020 Time: 0700 - 2000
-------------------------------------	---

5. Operations Personnel			
Operations	Mike Granger, Brandon Cichowski, Joey Gallion (T), Bret Lewis (T)	Division Supervisor	Chris Johnson
Branch Director		Safety Officer	Dan LeCrone, Shannon Bowman

6. Resources Assigned this Period								
Strike Team/ Task Force/ Resource Designator	14 th Day	21 st Day	30 th Day	Leader	Number of persons	Drop off	Pick up	Comments

6. Control Operations/Work assignments:
Task: Identify and brief predetermined resources from Divisions that would be called to support structure protection if needed. Structure group will request predetermined resources from nearest Division to respond where spotting is occurring. Resources will be briefed by Structure Group prior to engagement. Maintain contact with Marin County Fire to receive daily strike team support for boost, when needed.
Purpose: Resources are improving and holding indirect and direct line construction and aviation assets are supporting their efforts when air clears. If fire spots into area of structures, incoming incident resources will need immediate access to structure assessments and community geography.
End State: Ensure wildfire risk to structures and community infrastructure is minimized, responders are familiar with community maps and geography, and landowners are educated on mitigation measures, fire information, and evacuation preparedness. Firefighters and landowners safety is maximized and property damage is minimized.

7. Special Instructions:
 Structure protection communications will be on Tac 3. Incoming resources to assist structure protection will be briefed on the move from their Division Tac. Structure Group will establish command and control of all resources assigned to structure protection.
 All resources moved from Divisions to Structure Group are under Structure Group command and control.
 The NPS repeaters are not to be used unless you cannot communicate on any of the command repeaters and there is an EMERGENCY.
 In Branch II, use Command 2 repeater from Bear Valley Trail to DP10 and use Command 3 repeater from DP10 to DP20.
 All water resupply should be from the hydrant at the end of Commodore-Webster Road in Point Reyes Station. It is identified in Collector and in Trello.
 Marin County Engine 1130 will be in Silver Hills area patrolling.

9. Division/Group Communication Summary
See Communications Plan

Prepared by (Resource Unit Leader) <i>[Signature]</i> (RESU) (T)	Approved by (Planning Section Chief) <i>[Signature]</i> PSC2 (T)	Date 9/4/2020	Time 2000
---	---	------------------	--------------

WIAIR OPERATIONS SUMMARY 220v.3

Prepared By: Lori Clark, AOBD

Prepared Date: 09/04/2020

Prepared Time: 2000

1. INCIDENT NAME: Woodward	2. OPS PERIOD DATE: 09/05/2020	START TIME: 0800	END TIME: 2000	(Petaluma) SUNRISE: 0644	SUNSET: 1933
--------------------------------------	--	----------------------------	--------------------------	------------------------------------	------------------------

<p>3. Risk Assessment Mitigations, Special Instructions, and Remarks: Hazard: Visibility – smoke and marine fog Mitigation: Ensure visibility is within acceptable limits to safely conduct flight operations Hazard: External loads (water bucket) over high traffic routes (Hwy 101); mitigation: discuss best options for safest routes & potential off-helispot locations for bucket attachment Hazard: Complacency: lack of activity can lull us into complacency; Mitigation: be disciplined and utilize established operational procedures; Use checklists and brief procedures even they are familiar. <i>With the “One Module concept” for COVID mitigation – Communication is critical</i> Attend Zoom Briefing daily at 0700; contact AOBD or ASGS with any follow-up questions</p>	<p>4. READY ALERT MEDEVAC A/C The Santa Barbara County Fire Department: Call Sign “Copter 4” (N911HN) - equipped with NVG and hoist; -EMT-Paramedic, Advanced Life Support (ALS) transport ; Located at the Redding Airport Order through ECC</p>	<p>5. TFR: # 07637 AREA BOUNDED BY 380552N/1225713W (POINT REYES VOR/DME PYE268004.2) TO 380925N/1225042W (POINT REYES VOR/DME PYE356004.8) TO 380540N/1224243W (POINT REYES VOR/DME PYE066007.4) TO 380056N/1224058W (POINT REYES VOR/DME PYE097009.6) TO 375628N/1224611W (POINT REYES VOR/DME PYE134009.5) TO POINT OF ORIGIN SFC-7000FT Frequency: 125.5250 https://tfr.faa.gov/save_pages/notam_actual_0_7637.html</p>
--	---	---

6. PERSONNEL	NAME	PHONE #	7. FREQUENCIES	type	Freq.	8. FIXED-WING Avail/ Type/ Make-Model/ NH/ AIRTANKERS- Order through Air Attack
AOBD	Lori Clark	406-370-1710	TFR	AM	125.5250	
Deputy AOBD	Laura Barrett	208-983-8154	FW Air Tactical	FM TX/RX	170.3875	
ASGS -1	Kyle Stump	208-816-3141	RW Air Tactical	AM	132.725	
			A/G Primary	FM TX/RX	166.9375	HLCO Platform: AS350B3; N839PA
			A/G Secondary	FM RX/TX	166.600	
ATGS	John Pollard (199KQ) LD- 9/6	208-661-7706	CALCORD (California On-Scene Coordination Frequency)	FM RX/TX	RX: 156.0750 Tone: T6-156.7	ATGS AIRCRAFT: Kodiak 100; N199KQ (Santa Rosa) Order relief through Woodacre ECC 415-473-6717
HLCO	Travis Will LD 9/5	208-841-1898			TX: 156.0750	E-Mail Costs to: 2020.woodward.finance@firenet.gov or colin.sorenson@firenet.gov
Helibase:	Petaluma (069)	707-775-9816	Air Guard	FM RX/TX	168.625	E-Mail Costs to: 2020.woodward.finance@firenet.gov or colin.sorenson@firenet.gov Helibase Records: petalumahb@gmail.com **password protected
HMGB-721HT	Shane Hagen	559-974-4500				All Maps/IAPs found on the ftp site. VISIBILITY CAMERAS: http://www.alertwildfire.org/northbay/?camera=Axis-Vision
HMGB - H-510	Tyler Williams	530-592-8859	(Chester HT)			*Aerial Ignition Plan (MASP) approved for use of helicopter or UAV for PSD operations

9. HELICOPTERS (Assigned)

9.a Other Aircraft

FAA N#	TY	MAKE/ MODEL	BASE	AVAIL	REMARKS	FAA N#	T Y	MAKE/ MODEL	BASE	AVAIL	REMARKS
721HT	1	Sikorsky CH54B	Petaluma	0900	Tanked	N839PA	3	AS350B3	Petaluma	0900	Limited- HLCO Platform Only - LD 9/5
212BT	2	Bell 212HP	Petaluma	0900	Call sign H-510; Bucket						

ICS 220 Continued

10. TASK/ MISSION/ ASSIGNMENT (Type/ function includes: Air Tactical, Retardant, Recon, Personnel Transport, Bucket Operations, SAR, etc.)											
Aircraft					NAME OF PERSONNEL OR CARGO (if applicable) or instructions for tactical aircraft						
FAA N#	TY	MAKE/ MODEL	BASE	AVAIL	REMARKS	FAA N#	T Y	MAKE/ MODEL	BASE	AVAIL	REMARKS
721HT	H-510				Water Drops as requested						
HLCO					Flight as requested						
Air Attack					Flight as requested						
Helibase/Helisports/ dipsites											
Location NAME	LATITUDE	LONGITUDE	Elevation	HIGE/HOGE	REMARKS / HAZARDS	MISSION START	FLY FROM	FLY TO			
BEAR VALLEY HELISPOT	38° 2.326'	122° 47.95'	40'	HOGE	@ VISITORS CENTER						
H1	38 02.41'	122 49.65'	1065'	HOGE	N SIDE OF FIRE						
DP 10	38 01.15'	122 48.05'	420'	HOGE							
TRIANGLE	38 3.4916'	122 47.1217'	266	HOGE	Freshwater dipsite E of fire						
GREEN	38 03.89'	122 47.96'	541'	HOGE	Freshwater dipsite E of Ck Dip						

INCIDENT RADIO COMMUNICATIONS PLAN		1. Incident Name WOODWARD		2. Date/ Time Prepared 9/4/2020 1930		3. Operational Period Date/Time 9/5/2020 to 9/6/2020 0600-0600	
Channel	DISPLAY	Frequency	Tone	Mode	Assignment	Remarks	
1	CMD 1	Rx 169.7500	167.9	N	DIV C		
		Tx 167.1000	167.9				
2	CMD 2	Rx 167.9125	167.9	N	DIV E/T	Bear Valley to DP10 Use CMD 2 ** Within ICP use CMD 2 **	
		Tx 164.8125	167.9				
3	CMD 3	Rx 172.9875	167.9	N	DIV W/Z	DP10 to DP20 Use CMD 3	
		Tx 165.1500	167.9				
4	PRNSS LT	Rx 171.1625	110.9	N	EMERGENCY USE	FOR EMERGENCY USE ONLY	
		Tx 164.0875	110.9				
5	PRNSS BR	Rx 169.7125	110.9	N	EMERGENCY USE	FOR EMERGENCY USE ONLY	
		Tx 162.1625	110.9				
6	PRNSS PH	Rx 169.7750	110.9	N	EMERGENCY USE	FOR EMERGENCY USE ONLY	
		Tx 163.3875	110.9				
7	TAC 1	Rx 168.0500	167.9	N	DIV C	NIFC TAC 1	
		Tx 168.0500	167.9				
8	TAC 2	Rx 168.6000	167.9	N	DIV E	NIFC TAC 3	
		Tx 168.6000	167.9				
9	TAC 3	Rx 166.7250	167.9	N	STRUCTURE/NIGHT	NIFC TAC 5	
		Tx 166.7250	167.9				
10	TAC 4	Rx 166.7750	167.9	N	DIV Z/T	NIFC TAC 6	
		Tx 166.7750	167.9				
11	TAC 5	Rx 168.2500	167.9	N	DIV W	NIFC TAC 7	
		Tx 168.2500	167.9				
12		Rx					
		Tx					
13	A/G PRIMARY	Rx 166.9375	NONE	N	ALL DIVS	AIR TO GROUND	
		Tx 166.9375	NONE				
14	A/G SECONDARY	Rx 166.6000	NONE	N	ALL DIVS	AIR TO GROUND	
		Tx 166.6000	NONE				
15	CALCORD	Rx 156.0750	156.7	N	ALL DIVS		
		Tx 156.0750	156.7				
16	AIRGUARD	Rx 168.6250	NONE	N	ALL DIVS	Emergency Air Contact	
		Tx 168.6250	110.9				
17		Rx					
		Tx					
18		Rx					
		Tx					
19		Rx					
		Tx					
20	AIRGUARD	Rx 168.6250	NONE	N	ALL DIVS	Emergency Air Contact	
		Tx 168.6250	110.9				

Mode: W=Wideband Analog, N=Narrowband Analog, D=Digital, M=Mixed

5. Prepared by (Communications Unit) *Kary J. Mavencamp*
 Kary Mavencamp, COML CONTROLLED UNCLASSIFIED INFORMATION

Blank

MEDICAL PLAN (ICS 206 WF)

Controlled Unclassified Information//Basic

1. Incident/Project Name	2. Operational Period
WOODWARD INCIDENT	Date/Time 09/05/2020 0600-0600

3. Ambulance Services				
Name	Complete Address	Phone & EMS Frequency	Advanced Life Support (ALS)	
			Yes	No
Marin County Fire M94	4 th and B, Point Reyes, CA	415-473-6717	X	
Marin County Fire M96	33 Castle Rock, Woodacre, CA	415-473-6717	X	
Marin County Fire M97	32 Belvedere Ave, Stinson Beach, CA	415-473-7235	X	

4. Air Ambulance Services		
Name	Phone	Type of Aircraft & Capability
REACH 1	800-252-5050	EC-135 Advanced Life Support-Nurse/Medic-Night Vision
Henry 1	707-565-2121	Bell 407 Long Line/Night Vision/ IR camera

5. Hospitals								
Name Complete Address	GPS Datum – WGS 84 Coordinate Standard Degrees Decimal Minutes DD° MM.MMM' N - Lat DD° MM.MMM' W - Long		Travel Time Air Gnd		Phone	Helipad Yes No		Level of Care Facility
	Lat:	Long:	min	min		<input type="checkbox"/>	<input type="checkbox"/>	
John Muir Health, Walnut Creek, CA	37° 56 .8682	122° 32 .1681	15	50	925-939-5800	<input checked="" type="checkbox"/>	<input type="checkbox"/>	Level 2
	VHF: 156.075							
	38° 5 .9618	122° 33 .5887	15	45	707-525-5300	<input checked="" type="checkbox"/>	<input type="checkbox"/>	
VHF: 156.075								
38° 0 .2621	122° 33 .2501	20	90	916-734-2011	<input checked="" type="checkbox"/>	<input type="checkbox"/>	Level 1	
VHF: 156.075								

6. Division Branch Group	Area Location Capability	
C Branch 1	EMS Responders & Capability:	0-72 EMPF-Paramedic, James O'Connor
	Equipment Available on Scene:	ALS, SKED
	Medical Emergency Channel:	Command
	ETA for Ambulance to Scene:	
	Air:	
	Ground:	
	Approved Helispot:	
	Lat:	
Long:		
E Branch 1	EMS Responders & Capability:	0-72 EMPF-Paramedic, James O'Connor
	Equipment Available on Scene:	ALS, SKED
	Medical Emergency Channel:	Command
	ETA for Ambulance to Scene:	
	Air:	
	Ground:	
	Approved Helispot:	
	Lat:	
Long:		

MEDICAL PLAN (ICS 206 WF)

Controlled Unclassified Information//Basic

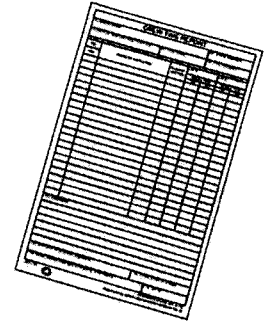
1. Incident/Project Name	2. Operational Period		
Z Branch 1	EMS Responders & Capability:	0-72 EMPF-Paramedic, James O'Connor	
	Equipment Available on Scene:	ALS Kit, SKED	
	Medical Emergency Channel:	Command	
	ETA for Ambulance to Scene:		
	Air:		
	Ground:		
	Approved Helispot:		
	Lat:		
Long:			
T Branch II	EMS Responders & Capability:	0-228 EMTF-EMT, Dustin Emick	
	Equipment Available on Scene:	BLS Kit	
	Medical Emergency Channel:	Command	
	ETA for Ambulance to Scene:		
	Air:		
	Ground:		
	Approved Helispot:		
	Lat:		
W Branch II	EMS Responders & Capability:	0-227 EMTF-EMT, Kirk Steers	
	Equipment Available on Scene:	BLS Kit	
	Medical Emergency Channel:	Command	
	ETA for Ambulance to Scene:		
	Air:		
	Ground:		
	Approved Helispot:		
	Lat:		
Long:			
Structure	Point of Contact:		
	EMS Responders & Capability:		
	Equipment Available on Scene:		
	Medical Emergency Channel:		
	ETA for Ambulance to Scene:		
	Air:		
	Ground:		
	Approved Helispot:		
Lat:			
Long:			
Night	Point of Contact:		
	EMS Responders & Capability:		
	Equipment Available on Scene:		
	Medical Emergency Channel:		
	ETA for Ambulance to Scene:		
	Air:		
	Ground:		
	Approved Helispot:		
Lat:			
Long:			
7. Prepared By (Medical Unit Leader)	8. Date/Time	9. Reviewed By (Safety Officer)	10. Date/Time
Terry Stevenson	09/5/2020	Dan LeCrone,	09/05/2020

Woodward Fire ICP

Phone List

SAFETY	415-488-4067
OPERATIONS	415-488-4029
AIR OPERATIONS	415-488-4032
DEMOB	415-488-4023
PLANS	415-488-4027
CHECK-IN	707-775-8380 / 415-488-4051
FINANCE	707-775-8486
ICP	415-488-4045
MEDICAL UNIT	406-788-8487

HOW TO SUBMIT YOUR TIME



Resources have three options:

1. Fill out your CTR/Shift Ticket, have your supervisor sign it, and Division will forward it to Planning Ops who will give it to Finance.
2. Fill out your CTR/Shift Ticket, have your supervisor sign it, take a picture of it, and email it to Finance with the word **Time** in the subject line: 2020.woodward.finance@firenet.gov.
3. Fill out an electronic CTR/Shift Ticket, email it to your supervisor to sign, and then email it to Finance with the word **Time** in the subject line: 2020.woodward.finance@firenet.gov.

Include a contact email and cell phone in the remarks!

Please do not wait to turn in your time. We never know when resources could be moved to a higher priority fire and that will really slow down the reassignment process. We want to make this as smooth as possible for you.

Note: Ensure your CTR or Shift ticket has a supervisor's signature and shows meal breaks.

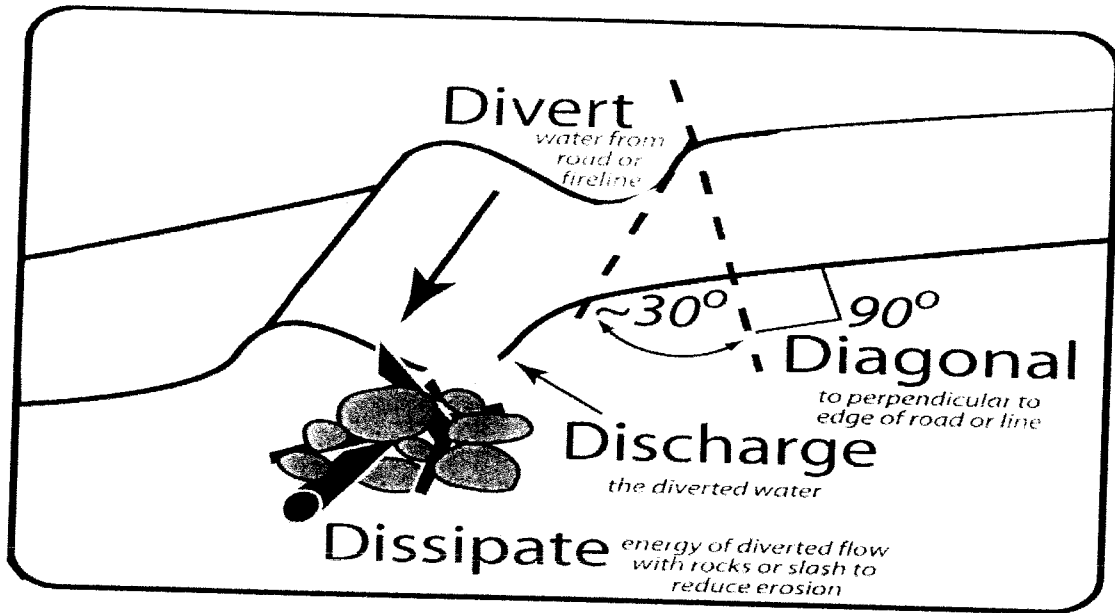
Thank you,

Your Finance Section

Picture of Poverty Flats Finance Section 1961 - →



READ Message: Waterbar Refresher



Dozerline

Fireline Gradient (% slope)	Distance Between Waterbars (feet)
0 to 10	200 or none required
10 to 20	100
21 to 40	75
41 to 60 ¹	50

Handline

Fireline Gradient (% slope)	Distance Between Waterbars ^(A) (feet)
0 to 10	250 or none required
10 to 20	200
21 to 40	75
41 to 60	50

DEPTH: Waterbars need to be cut *into* the ground surface.

- Waterbar depths for **dozerlines** should be at least 6 inches
 - Total height from bottom of ditch to the top of the waterbar should average at least 18 inches and not exceed 24 inches.
- Waterbar depths for **handlines** should be at least 4 inches.
 - Total height from bottom of ditch to top of waterbar should average at least 8 inches and not exceed 12 inches.

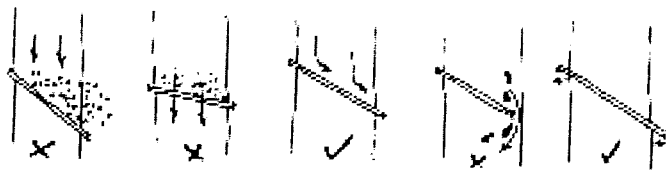


Figure 2 - Aerial view of Waterbar Ditch and Ditch

Woodward Fire Resource Advisor Message

WHENEVER POSSIBLE:

- ❑ Employ Minimal Impact Strategies and Tactics (MIST) when conducting operations in the Phillip Burton Wilderness.
- ❑ Avoid cutting any trees greater than 18 inches diameter at breast height or wildlife trees with large cavities or deformities
- ❑ Avoid bucket drops in freshwater ponds, wetlands, and streams

Consult with Fireline Resource Advisors (REAFs) before:

- ❑ working in an area flagged off with sensitive resource flagging
(yellow + red-polka dots)
- ❑ conducting fire operations in known noxious weed infestations
- ❑ transporting slash material beyond the area it was cut
- ❑ establishing new camps, staging areas, safety zones, helispots, etc.
- ❑ discharging water on roads or at stream crossings
- ❑ constructing dozerline within 100 feet of dry of stream channels

PLEASE PACK OUT ALL GARBAGE

**Thank you for your *commitment* and *dedication* in preserving
valuable natural and cultural resources**



HUMAN RESOURCE MESSAGE

There is zero tolerance for drugs and alcohol on this fire incident.



**Be part of the solution;
not the problem.**

If you feel the need to complain about something, have a solution to offer too.

Debby Hassel, HRSP (Virtual)

(406) 274-7985

hrspfire@gmail.com

Woodward Fire

Demobilization Check-out

Due to Covid-19 safety precautions, we will be using virtual approvals instead of obtaining signatures on a paper copy of the ICS-221 form.

All departing resources will complete the Demobilization Check-out process by the contact methods listed below. The unit's approving official will notify the Demob unit of your clearance.

Weed Wash and SOD Decon Stations- located at Point Reyes Visitor Center

Supply - located near ICP entrance. Only required if items checked out need to be returned

Communications - located in the trailer at the west end of ICP main building

Facilities - window service at the east end of ICP main building on the lower level

Ground Support (vehicle inspections)- located at the east end of ICP parking lot

Time - contactless only service - submit all records to 2020.woodward.finance@firenet.gov

Documentation - Contactless only - submit all records to 2020.woodward.plans@firenet.gov

Demob - contactless only service - Please confirm ETAs prior to departing ICP using the QR code below to ensure that IROC will be accurately updated of your release from the incident.

****Any resource requiring commercial air travel, must make those arrangements with the Demob unit at least 72 hours in advance.****

Please call the Demob Unit (contactless only) if you need assistance!

Rebecca Bulls

Demobilization Unit Leader (DMOB)

Northern Rockies Incident Management Team 2

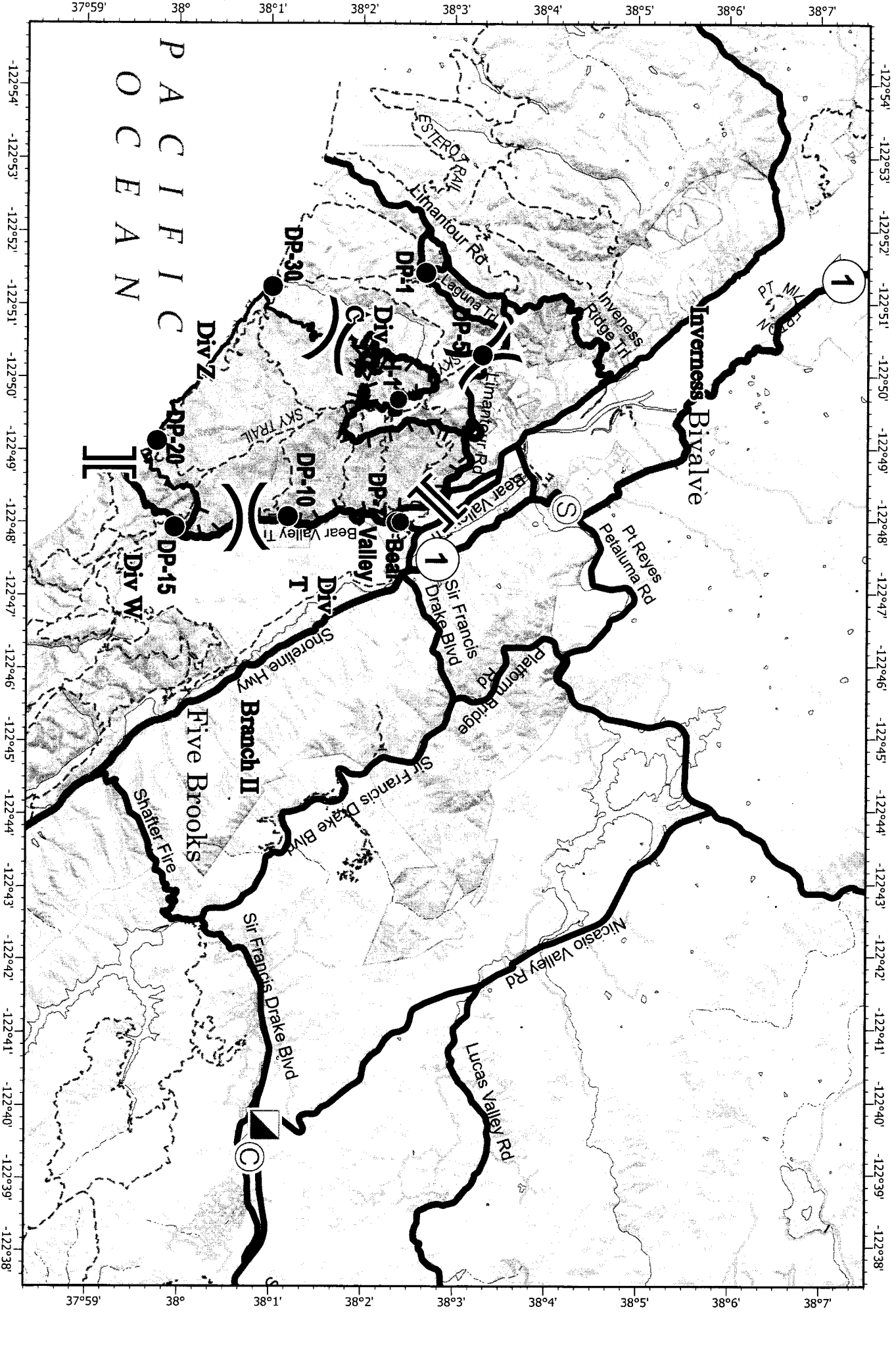
Desk: 415-488-4023

Cell: 703-939-1932

2020.woodward.dmob@firenet.gov



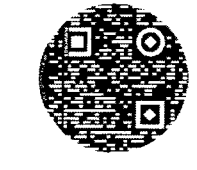
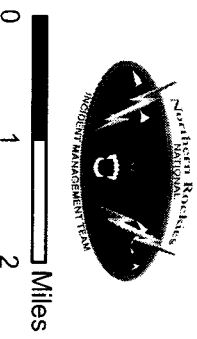
Actual Release Data Entry



Woodward
 CA-RNP-012009
 9/1/2020
 4,465 acres
 Fire perimeter updated from
 Acres from IR at 2011 on 8/30/2020

Transportation Map

- Wildfire Daily Fire Perimeter
- Uncontrolled Fire Edge
- Sky Trail
- Local Road
- Highway
- Trail
- Helispot
- Incident Command Post
- Staging Area
- Division Break
- Branch Break



MEDICAL PLAN (ICS 206 WF)

Controlled Unclassified Information//Basic

Medical Incident Report

FOR A NON-EMERGENCY INCIDENT, WORK THROUGH CHAIN OF COMMAND TO REPORT AND TRANSPORT INJURED PERSONNEL AS NECESSARY.

FOR A MEDICAL EMERGENCY: IDENTIFY ON SCENE INCIDENT COMMANDER BY NAME AND POSITION AND ANNOUNCE "MEDICAL EMERGENCY" TO INITIATE RESPONSE FROM IMT COMMUNICATIONS/DISPATCH.

Use the following items to communicate situation to communications/dispatch.

1. CONTACT COMMUNICATIONS / DISPATCH (Verify correct frequency prior to starting report)
Ex: "Communications, Div. Alpha. Stand-by for Emergency Traffic."

2. INCIDENT STATUS: Provide incident summary (including number of patients) and command structure.

Ex: "Communications, I have a Red priority patient, unconscious, struck by a falling tree. Requesting air ambulance to Forest Road 1 at (Lat./Long.) This will be the Trout Meadow Medical, IC is TFLD Jones. EMT Smith is providing medical care."

Severity of Emergency / Transport Priority	<input type="checkbox"/> RED / PRIORITY 1 Life or limb threatening injury or illness. Evacuation need is IMMEDIATE <i>Ex: Unconscious, difficulty breathing, bleeding severely, 2° - 3° burns more than 4 palm sizes, heat stroke, disoriented.</i> <input type="checkbox"/> YELLOW / PRIORITY 2 Serious Injury or illness. Evacuation may be DELAYED if necessary. <i>Ex: Significant trauma, unable to walk, 2° - 3° burns not more than 1-3 palm sizes.</i> <input type="checkbox"/> GREEN / PRIORITY 3 Minor Injury or illness. Non-Emergency transport <i>Ex: Sprains, strains, minor heat-related illness.</i>	
Nature of Injury or Illness & Mechanism of Injury	Click or tap here to enter text.	Brief Summary of Injury or Illness <i>(Ex: Unconscious, Struck by Falling Tree)</i>
Transport Request	Click or tap here to enter text.	Air Ambulance / Short Haul/Hoist Ground Ambulance / Other
Patient Location	Click or tap here to enter text.	Descriptive Location & Lat. / Long. <i>(WGS84)</i>
Incident Name	Click or tap here to enter text.	Geographic Name + "Medical" <i>(Ex: Trout Meadow Medical)</i>
On-Scene Incident Commander	Click or tap here to enter text.	Name of on-scene IC of Incident within an Incident <i>(Ex: TFLD Jones)</i>
Patient Care	Click or tap here to enter text.	Name of Care Provider <i>(Ex: EMT Smith)</i>

3. INITIAL PATIENT ASSESSMENT: Complete this section for each patient as applicable (start with the most severe patient)

Patient Assessment: See IRPG PAGE 106 Click or tap here to enter text.

Treatment: Click or tap here to enter text.

4. TRANSPORT PLAN:

Evacuation Location (if different): (Descriptive Location (drop point, intersection, etc.) or Lat. / Long.) Patient's ETA to Evacuation Location: Click or tap here to enter text.

Helispot / Extraction Site Size and Hazards: Click or tap here to enter text.

5. ADDITIONAL RESOURCES / EQUIPMENT NEEDS:

Example: Paramedic/EMT, Crews, Immobilization Devices, AED, Oxygen, Trauma Bag, IV/Fluid(s), Splints, Rope rescue, Wheeled litter, HAZMAT, Extrication Click or tap here to enter text.

6. COMMUNICATIONS: Identify State Air/Ground EMS Frequencies and Hospital Contacts as applicable

Function	Channel Name/Number	Receiver (RX)	Tone/NAC *	Transmit (TX)	Tone/NAC *
COMMAND	Click or tap here to enter text.	Click or tap here to enter text.	Click or tap here to enter text.	Click or tap here to enter text.	Click or tap here to enter text.
AIR-TO-GRND	Click or tap here to enter text.	Click or tap here to enter text.	Click or tap here to enter text.	Click or tap here to enter text.	Click or tap here to enter text.
TACTICAL	Click or tap here to enter text.	Click or tap here to enter text.	Click or tap here to enter text.	Click or tap here to enter text.	Click or tap here to enter text.

7. CONTINGENCY: Considerations: If primary options fail, what actions can be implemented in conjunction with primary evacuation method? Be thinking ahead. Click or tap here to enter text.

8. ADDITIONAL INFORMATION: Updates/Changes, etc. Click or tap here to enter text.

REMEMBER: Confirm ETA's of resources ordered. Act according to your level of training. Be Alert. Keep Calm. Think Clearly. Act Decisively. Click or tap here to enter text.