

*** Corrected ***

INCIDENT ACTION PLAN

RED SALMON COMPLEX

CA-SRF-000656 ~~P5NBS(0051)~~ *P5NB45 (0510)*



OPERATIONAL PERIOD

THURSDAY, AUGUST 13-14, 2020
0600-0600 HOURS



DEMOB



CHECK-IN



MAPS

INCIDENT OBJECTIVES (ICS 202)

1. Incident Name: RED SALMON COMPLEX	2. Operational Period: 24 HOUR	
	Date/Time From: 08/13/2020 0600	THU
	Date/Time To: 08/14/2020 0600	FRI

3. Objective(s):

Management Objectives

- Follow identified standard procedures to minimize the spread of Covid-19 to all functions of the incident.
- Utilize nationally recognized risk management processes to minimize threats to the public and emergency responders.
- Use risk-based decision making and MIST tactics to protect and defend cultural values and natural resources.
- Foster and maintain positive relationships with all stakeholders and the public by sharing critical information so timely decisions and actions can be implemented.
- Manage incident costs effectively for the values at risk through regular and ongoing cost analysis.

Control Objectives

- Provide initial attack within the TFR and control the fire on Prospect Peak

Keep Red and Salmon Fires:

- East of Packsaddle Ridge
- West of the Battle Creek Trail
- North of the Soldier Creek Trail
- South of Shasta - Trinity / Klamath National Forest boundary.

4. Operational Period Command Emphasis:

Transition day, be Adaptable.

General Situational Awareness:

Maintain focus on the task at hand. Give clear briefings, and conduct daily after action reviews to continually improve your situational awareness.

5. Site Safety Plan Required? Yes No

Approved Site Safety Plan(s) Located at:

6. Incident Action Plan

(the items checked below are included in this Incident Action Plan):

- | | | |
|---|---|---|
| <input checked="" type="checkbox"/> ICS 202 | <input type="checkbox"/> ICS 207 | Other Attachments: |
| <input checked="" type="checkbox"/> ICS 203 | <input type="checkbox"/> ICS 208 | <input checked="" type="checkbox"/> ICS 214 |
| <input checked="" type="checkbox"/> ICS 204 | <input checked="" type="checkbox"/> ICS 220 | <input checked="" type="checkbox"/> MIST GUIDELINES |
| <input checked="" type="checkbox"/> ICS 205 | <input checked="" type="checkbox"/> Map/Chart | <input checked="" type="checkbox"/> FINANCE MESSAGE |
| <input type="checkbox"/> ICS 205A | <input checked="" type="checkbox"/> Weather Forecast/Tides/Currents | <input checked="" type="checkbox"/> HRSP |
| <input checked="" type="checkbox"/> ICS 206 | | |

7. Prepared by:

MITCH DIEHL

Position/Title:

PSC1

Signature:



8. Approved by Incident Commander:

Name: JAY KURTH

Signature:



ICS 202

IAP Page

Date/Time:

08/13/2020 2000

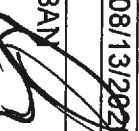
ORGANIZATION ASSIGNMENT LIST

1. Incident Name Red Salmon Complex	
2. Date Prepared 8/12/2020	3. Time 2000
4. Operational Period August 13 - 14, 2020 0600 - 0600 DAY SHIFT 0600 - 1800 NIGHT SHIFT 1800 - 0600	
Position	Name
5. Incident Commander and Staff	
Incident Commander	Jay Kurth
Deputy IC	Rocky W. Opfinger
Safety Officer	Jason Winbigler / Mike Alforque (T) / Curt Schwam (T)
Information Officer	Sean Collins / Sonny Soghera / Kristen Miller (T)
Liaison	Steve Anderson / Heather Noel (T)
6. Agency Representatives	
Agency	Name
7. Planning Section	
Chief	Dave Gerbohn / Mitch Diehl / Allen Taylor (T)
Resources Unit	Jeremy Cornacho / Gina Bold / Gary Bishop
Situation Unit	Damian Guilliani / Joe Scuri (T)
Training Specialist	Nick Balent (T)
Human Resource Specialist	Adam Alvarez
Demob Unit	Dan Boggao
IMET	Jon Bonk
FBAN	Diondray Wiley (T) / Stewart Turner / Kelly Allen
ITSS	James Whiteside / Mike Loxo
GISS	Chris Clervi / Matt Ester / Chris Barrett / Darci Pauli
DOCL	Dan Boggao
PSC3	Tom Reeves (ORLEANS)
8. Logistics Section	
Chief	Cheryl Reines
Medical Unit	Eric Williams / Jeff Brooks (ORLEANS) Doug Stewart / Michael Harris (T)
Communications Unit	Sol Bonilla Jr. / Kevin Jones
Food Unit	Ryan Folino
Facilities Unit	Jan Palecek
Supply Unit	Jennifer Wells / Janet Fer
GSUL	Jeff Burch / Rob Brewer
ORDM	Christian Pedrini / Robert Griffith (T)
COML	Tim McGuire (ORLEANS)

9. Operations Section	
Ops Section Chief	Jake Cagle
Night Ops Section Chief	Dave Pereira (ORLEANS)
Planning Ops	Kyle Jacobson/ Jeremy Bennett (T)
9. Branch Contingency	
Branch Director	James Courtwright (T)
Trinity Group	Dennis Wilson
Red Group	Unstaffed
Salmon Group	Eric Bader
Long Ridge Group	Unstaffed
b. Branch I	
Branch Director	Matt Reidy / Gordon Meyer (T) (ORLEANS)
Division A	Mark Mott (ORLEANS)
Division D	Glenn Webb
Division K	Unstaffed
c. Branch Y	
Branch Director	Robert Bertolino / Daniel Oberg (T)
Division M / N	Tony Rivers
Division O	Zack Becker / Brandon Oberhardt
Division P	Trovis Stout / Kevin Norton (T)
d. Branch VII	
Branch Director	Gary Monday / Paul Johnson (ORLEANS)
Division U	Bill Robinson / Robert Hoyler(T) (ORLEANS)
Division W	Rob Berry (ORLEANS)
Division Y	Nick Bunch (ORLEANS)
e. Branch I Night	
Branch Director	Joe Gonzales (T)(ORLEANS)
Division D	Graham Rice / Tod Flowers (T) (ORLEANS)
Division W	Kevin Smith(ORLEANS)
G. Air Operations Branch	
Air Operations Branch Director	Galen Young
Air Support Supervisor	Jim Stratton
10. Finance Section	
Finance Section Chief	Judy Reynolds
Time Unit	Shelia Miner / Lori Holt
Procurement Unit	Craig Ericson
Cost	Vicki Wilson
Compensation/Claims Unit	Scott Parsons
Prepared by Gina Bold 08/13/2020	

Assignment (T) (Orleans)

FIRE BEHAVIOR FORECAST

FORECAST NUMBER: 17	TYPE OF FIRE Wildfire
FIRE NAME: Red/Salmon	OPERATIONAL PERIOD 08/13/2020
DATE ISSUED 08/12/2020	TIME ISSUED 2200
UNIT CA-SRF	SIGNED Stewart Turner FBAN 
	Diondray Wiley, FBAN (T)

INPUTS

WEATHER SUMMARY:

DISCUSSION...The low pressure will be moving out of the area today which will usher in warmer dryer weather. We will also experience more stability in the afternoon with the associated high pressure and an increase in mixing height. A thunderstorm is forecasted for Saturday due to Hurricane Elida off the coast of Baja. A South wind is projected to materialize Sunday and Monday. The incident has not been tested by a South wind, expect a potential change in fire behavior.

See Weather Forecast for details

FIRE BEHAVIOR

GENERAL

Fire behavior will intensify with the increase in temperature and lower humidities. The fire will remain terrain driven and topography influenced. Expect active surface fire and occasional torching. Short terrain driven runs should be expected as the fire aligns with terrain and wind. As the fire moves towards lower elevations, more fuel will be available to burn as live fuel moistures are near 100% around 2000 feet.

Spotting distance: up to .1-.2 of a mile.

Probability of ignition: 59-80% shaded and unshaded

Predicted ERC: 77 Timber ROS: 5-11 ch/hr. Timber FL: 4-6 feet (Head Fire)
 Predicted BI: 81 Brush ROS: 1-3 ch/hr. Brush FL: 2-4 feet (Head Fire)

SPECIFIC

SPECIFIC FIRE BEHAVIOR:

Branch I (Div. A, D, K): Surface fire spread and occasional torching when ladder fuels are present can be anticipated. In divisions A and D heavy fuels along the line within the burnout operation will continue to consume and have potential to spot over the line.

Branch V (Salmon, M, N, O, P): Heavy fuels continue to consume along with interior pockets of unburned fuels. Fire behavior will be limited to creeping and smoldering. Increased spotting potential from firing operations due to predicted NW winds (5-7 mph).

Branch VII (Div. R, U, W, Y): As the fire moves laterally to the South East in Red Cap drainage there is potential for slope alignment and upslope runs. Rapid rates of spread with torching and spotting will occur as the fire moves up the steep slopes towards Packsaddle ridge.

Night Shift (All Branches): Fire activity will moderate through the night with creeping and smoldering expected. More active burning will take place within the thermal belt between 4500-5500 ft. Your best opportunity to conduct burning operations will be approx 0200-0300 with RHs between 25-30%.

New IA: Expect backing and upslope runs.

AIR OPERATIONS

Air operations will be limited until the low and mid-level inversion will lift at approx 1100-1300

SAFETY

Be mindful of your position on the fire line. Watch out for wind and slope alignment.

Division/Group Assignment List (ICS 204 WF)
 Controlled Unclassified Information/Basic

1. Incident Name: RED SALMON COMPLEX		3.		Branch: CONTING NECY	Division/Group: TRINITY
2. Operational Period: 24 HOUR		Date/Time From: 08/13/2020 0600	Date/Time To: 08/14/2020 0600	Operations Personnel	
		THU	FRI	OPERATIONS CHIEF JACOB A CAGLE BRANCH DIRECTOR JAMES COURTWRIGHT (T) DIVISION/GROUP SUPERVISOR DENNIS WILSON AIR ATTACK SUPERVISOR	

5. Resources Assigned this Period					
Strike Team / Task Force / Resource Designator	LWD	Leader	Number Persons	Drop Off PT./Time	Pick Up PT./Time
MAST - NORTHSTATE E-82	08/16	CARRSON METZ	2	SALMON SPIKE/0060	SALMON SPIKE/1800
HEQB (O-289)	08/20	JAMES HALL	1	SALMON SPIKE/0060	SALMON SPIKE/1800
HEQB(T) O-210.4	08/16	ERIC SNIPES		SALMON SPIKE/0060	SALMON SPIKE/1800
WT - S2 - CATTLE LACK RANCH (E-12)	08/23	JIM GOLDIE	1	SALMON SPIKE/0600	SALMON SPIKE/1800
WT - S2 - CATTLE LACK RANCH (E-13)	08/23	AL CROSS	1	SALMON SPIKE/0600	SALMON SPIKE/1800

6. Control Operations/Work Assignments:

 Masticate along Mill Creek Trailhead Road.

7. Special Instructions:

 Utilize Mist tactics. All line resources will spike overnight. ID helispots and drop points, get lat-longs and provide to DIVS. Backhaul trash and excess Equipment. Please return nets, swivels and ice chests. Utilize READ's for Cultural Resources concerns. Do not post lookouts on any bed rock out cropping without first getting clearance from REAF or READ.

ARCHS / REAFs will check in / out with DIVS when entering and leaving their divisions.**

8. Division/Group Communication Summary						
Function	Channel	RX Frequency N/W	RX Tone/NAC	TX Frequency N/W	TX Tone/NAC	Mode
COMMAND	3 - NIFC C10	170.4125N		165.9625N	T3-131.8	A
COMMAND	4 - NIFC C11	170.6875N		166.5750N	T3 - 131.8	A
COMMAND	5 - NIFC C28	173.5000N		165.3875N	T3-131.8	A
TACTICAL	12 - R5 TAC 5	167.1125N		167.1125N		A
AIR TO GROUND	13 - A/G TAC	165.3625N		165.3625N		A
AIR TO GROUND	14 - A/G	169.7250N		169.7250N		A

9. Prepared By (Resource Unit Leader) GARY BISHOP		Approved By (Planning Section Chief) MITCH DHIEL <i>DHIEL</i>		Date 08/12/2020	Time 2000
--	--	---	--	--------------------	--------------

**Division/Group Assignment List (ICS 204 WF)
Controlled Unclassified Information/Basic**

1. Incident Name: RED SALMON COMPLEX		3. Branch: CONTINGE NCY		Division/Group: RED		
2. Operational Period: 24 HOUR						
Date/Time From: 08/13/2020 0600		Date/Time To: 08/14/2020 0600		FRI		
4. Operations Personnel						
OPERATIONS CHIEF JACOB A CAGLE			BRANCH DIRECTOR JAMES COURTWRIGHT (T)			
DIVISION/GROUP SUPERVISOR			AIR ATTACK SUPERVISOR			
5. Resources Assigned this Period						
Strike Team / Task Force / Resource Designator		LWD	Leader	Number Persons	Drop Off PT./Time	Pick Up PT./Time
6. Control Operations/Work Assignments:						
7. Special Instructions:						
8. Division/Group Communication Summary						
Function	Channel	RX Frequency N/W	RX Tone/NAC	TX Frequency N/W	TX Tone/NAC	Mode
COMMAND	3 - NIFC C10	170.4125N		165.9625N	T3-131.8	A
COMMAND	4 - NIFC C11	170.6875N		166.5750N	T3 - 131.8	A
COMMAND	5 - NIFC C28	173.5000N		165.3875N	T3-131.8	A
TACTICAL	10 - VFIRE 25	154.2875N	T6 - 156.7	154.2875N	T6 - 156.7	A
AIR TO GROUND	13 - A/G TAC	165.3625N		165.3625N		A
AIR TO GROUND	14 - A/G CMD	169.7250N		169.7250N		A
9. Prepared By (Resource Unit Leader)		Approved By (Planning Section Chief)		Date		Time
GARY BISHOP		MITCH DHIEL <i>Diel</i>		08/12/2020		2000

Division/Group Assignment List (ICS 204 WF)
Controlled Unclassified Information/Basic

1. Incident Name: RED SALMON COMPLEX		3.		Branch: CONTINGE NCY	Division/Group: SALMON
2. Operational Period: 24 HOUR		Date/Time From: 08/13/2020 0600	Date/Time To: 08/14/2020 0600	FRI	
4. Operations Personnel					
OPERATIONS CHIEF JACOB A CAGLE		BRANCH DIRECTOR JAMES COURTWRIGHT (T)			
DIVISION/GROUP SUPERVISOR ERIC BADER (0-3) LWD 8/15		AIR ATTACK SUPERVISOR			

5. Resources Assigned this Period					
Strike Team / Task Force / Resource Designator	LWD	Leader	Number Persons	Drop Off PT./Time	Pick Up PT./Time
CREW - T2 - FRANCO (C-24)	08/13	ALEJANDRO CORONADO	20	SALMON SPIKE/0600	SALMON SPIKE/1800
WT - S2 - DAGEN (E-14)	08/22	BRIAN DAGEN	1	SALMON SPIKE/0600	SALMON SPIKE/1800
DOZ - T2 -BOGGS (E-103)	08/15	DYLAN BOGGS	2	SALMON SPIKE/0600	SALMON SPIKE/1800
MAST - T2 - FIGAS (E-252)	08/14	ROBERT FIGAS	1	SALMON SPIKE/0600	SALMON SPIKE/1800
MAST - T2 - LAPAGE (E-253)	08/14	RICH JANE	1	SALMON SPIKE/0600	SALMON SPIKE/1800

6. **Control Operations/Work Assignments:**
 Construct indirect line and scout ahead for line placement.

7. **Special Instructions:**

Utilize MIST tactics. All line resources will spike overnight.
 Utilize READ's for cultural and environmental resource concerns.
 ID helispots and drop points, get lat-longs and provide to DIVS. Please return nets, swivels, and ice chests.
 Back-haul trash and excess equipment.
 Do not post lookouts on any bed rock out cropping without first getting clearance from REAF or READ.

ARCHs / REAFs shared between division on Branch V. Check in / out with DIVS when entering and leaving divisions.

8. Division/Group Communication Summary						
Function	Channel	RX Frequency /NW	RX Tone/NAC	TX Frequency /NW	TX Tone/NAC	Mode
COMMAND	3 - NIFC C:10	170.4125N		165.9625N	T3-131.8	A
COMMAND	4 - NIFC C:11	170.6875N		166.5750N	T3 - 131.8	A
COMMAND	5 - NIFC C:28	173.5000N		165.3875N	T3-131.8	A
TACTICAL	11 - R5 TAC 4	166.5500N		166.5500N		A
AIR TO GROUND	14 - A/G CMD	169.7250N		169.7250N		A
AIR TO GROUND	13 - A/G TAC	165.3625N		165.3625N		A
9. Prepared By (Resource Unit Leader)						
GARY BISHOP	Approved By (Planning Section Chief)		Date		Time	
	MITCH DHEE <i>Diehl</i>		08/12/2020		2000	

**Division/Group Assignment List (ICS 204 WF)
Controlled Unclassified Information/Basic**

1. Incident Name: RED SALMON COMPLEX		3.		Branch: CONTINGE NCY	Division/Group: LONG RIDGE CONTINGENCY		
2. Operational Period: 24 HOUR			Date/Time From: 08/13/2020 0600 THU	Date/Time To: 08/14/2020 0600 FRI			
4. Operations Personnel							
	OPERATIONS CHIEF	JACOB A CAGLE	BRANCH DIRECTOR	JAMES COURTWRIGHT (T)			
	DIVISION/GROUP SUPERVISOR		AIR ATTACK SUPERVISOR				
5. Resources Assigned this Period							
	Strike Team / Task Force / Resource Designator	LWD	Leader	Number Persons	Drop Off PT./Time	Pick Up PT./Time	
6. Control Operations/Work Assignments:							
7. Special Instructions:							
8. Division/Group Communication Summary							
	Function	Channel	RX Frequency N/W	RX Tone/NAC	TX Frequency N/W	TX Tone/NAC	Mode
	COMMAND	3	170.4125N		165.9625N	T3-131.8	A
	COMMAND	5	173.5000N		165.3875N	T3-131.8	A
	COMMAND	4	170.6875N		166.5750N	T4 - 136.5	A
	FACTICAL	12	167.1125N		167.1125N		A
	AIR TO GROUND	13	165.3625N		165.3625N		A
	AIR TO GROUND	14	169.7250N		169.7250N		A
9. Prepared By (Resource Unit Leader)		Approved By (Planning Section Chief)		Date	Time		
GARY BISHOP		MITCH DHIEL <i>Diana</i>		08/12/2020	2000		

Division/Group Assignment List (ICS 204 WF)
Controlled Unclassified Information//Basic

1. Incident Name: RED SALMON COMPLEX		3. Branch: I	Division/Group: A
2. Operational Period: 24 HOUR		Date/Time From: 08/13/2020 0600	Date/Time To: 08/14/2020 0600
		THU	FRI

4. Operations Personnel	
OPERATIONS CHIEF JAKE CAGLE	BRANCH DIRECTOR MATT REIDY
DIVISION/GROUP SUPERVISOR MARK W MOTT	GORDON MEYER (O-237) LWD 8/14 (T)
KYLE CLENDENEN (O) <i>Demobed</i>	AIR ATTACK SUPERVISOR

5. Resources Assigned this Period						
Strike Team / Task Force / Resource Designator	LWD	Leader	Number Persons	Drop Off PT./Time	Pick Up PT./Time	
CREW - T1 - SMITH RIVER IHC (C-43)	08/20	DOUGLAS DENLINGER	21	RED SPIKE/0600	RED SPIKE/1800	
CREW - T2 - FRANCO 17076 (C-26)	08/13	JESUS MARTINEZ	20	RED SPIKE/0600	RED SPIKE/1800	
ENG - T3 - SRF 331 (E-170)	08/18	BRYAN LANNING	6	RED SPIKE/0600	RED SPIKE/1800	
ENG - T3 - SRF 332 (E-171)	08/18	GEOFFREY PHELAN	5	RED SPIKE/0600	RED SPIKE/1800	
WT - S2 - CATES (E-70)	08/18	TBD	2	RED SPIKE/0600	RED SPIKE/1800	
WT - S1 - N STATE (E-7)	08/15	ANTHONY MUNK	2	RED SPIKE/0600	RED SPIKE/1800	
WT - S2 - DUST BUSTERS (E-30)	08/23	KENNETH FOSTER	1	RED SPIKE/0600	RED SPIKE/1800	
WT - S2 - HOLT LOGGING (E-71)	08/14	PAUL HARDIG	1	RED SPIKE/0600	RED SPIKE/1800	
DOZ - T2 - KEN SMITH (E-83)	08/14	KENNY SMITH	2	RED SPIKE/0600	RED SPIKE/1800	
TFLD (O-169)	08/14	MARK SMITH	1	RED SPIKE/0600	RED SPIKE/1800	
HEQB (O-65)	08/14	ROBERT ISER	1	RED SPIKE/0600	RED SPIKE/1800	
HEQB (T) (O-210.3)	08/16	BENJAMIN PETERSON	1	RED SPIKE/0600	RED SPIKE/1800	
REMS - SMA REMS 6 (O-142) BRANCH RESOURCE	08/16	ANTONIO DEL CASTILLO	4	RED SPIKE/0600	RED SPIKE/1800	
EMPF (O-23)	08/21	LINDA BUELL	1	RED SPIKE/0600	RED SPIKE/1800	
EMTF (O-30)	08/21	DOMINIC ANTRES	1	RED SPIKE/0600	RED SPIKE/1800	
REAF (O-216)	08/15	FRANK LAKE	1	RED SPIKE/0600	RED SPIKE/1800	
REAF (O-383)	08/22	ANALISA TRIPP	1	RED SPIKE/0600	RED SPIKE/1800	
REAF (T) (O-247)	08/16	MEGHAN WHITMAN	1	RED SPIKE/0600	RED SPIKE/1800	

8. Division/Group Communication Summary						
Function	Channel	RX Frequency NW	RX Tone/NAC	TX Frequency NW	TX Tone/NAC	Mode
COMMAND	3 - NIFC C10	170.4125N		165.9625N	T3-131.8	A
COMMAND	4 - NIFC C11	170.6875N		166.5750N	T3 - 131.8	A
COMMAND	5 - NIFC C28	173.5000		165.3875	T3 - 131.8	A
TACTICAL	7 - VTAC 11	151.1375N	T6 - 156.7	151.1375N	T6 - 156.7	A
AIR TO GROUND	13 - AVG TAC	165.3625N		165.3625N		A
AIR TO GROUND	14 - AVG CMD	169.7250N		169.7250N		A

9. Prepared By (Resource Unit Leader)		Approved By (Planning Section Chief)	
GARY BISHOP		MITCH DIEL <i>Diel</i>	
Date	08/12/2020	Time	2000

Division/Group Assignment List (ICCS 204 WF)
Controlled Unclassified Information//Basic

1. Incident Name: RED SALMON COMPLEX		3. Branch: I		Division/Group: A		
2. Operational Period: 24 HOUR		Date/Time From: 08/13/2020 0600	Date/Time To: 08/14/2020 0600	FRI		
4. Operations Personnel						
OPERATIONS CHIEF		JAKE CAGLE		BRANCH DIRECTOR		
DIVISION/GROUP SUPERVISOR		MARK W MOTT KYLE GLENDENEN (T) <i>Dan Bedel</i>		AIR ATTACK SUPERVISOR		
GORDON MEYER (O-237) LWD 8/14 (T)						
5. Resources Assigned this Period						
Strike Team / Task Force / Resource Designator	LWD	Leader	Number Persons	Drop Off PT./Time	Pick Up PT./Time	
REAF(T) (O-396)	08/23	KATHERINE SIEDEL	1	RED SPIKE/0600	RED SPIKE/1800	
REAF (O-182)	08/13	BRYSON CODE	1	RED SPIKE/0600	RED SPIKE/1800	
SOFR. O-144	08/19	TIM BENEDICT	1	RED SPIKE/0600	RED SPIKE/1800	
6. Control Operations/Work Assignments:						
Continue line construction while scouting for opportunities for indirect suppression actions. Protect Ferris Cabin. Prep 10N01 Road from Lub Trail to Black Mountain. Be prepared to burn when conditions are favorable.						
7. Special Instructions:						
Utilize MIST tactics. All line resources will spike overnight.						
Utilize READ's for cultural and environmental resource concerns.						
ID helispots and drop points, get lat-longs. Please return nets, swivels, and ice chests.						
Back-haul trash and excess equipment. All resources use QR code to check-in.						
Do not post lookouts on any bed rock out cropping without first getting clearance from REAF or READ.						
ARCHS / REAFs listed in Division A are shared between Division A and Red Contingency.						
ARCHS / REAFs will check in / out with DIVS when entering and leaving their divisions.						
SMA REMS-6 Available for Branch I						
<i>Salmon River IK C-3 8/23 Kelsey Lofdash 19</i>						
<i>WT GRE 15 E-174 8/19 Michael Espinoza</i>						
8. Division/Group Communication Summary						
Function	Channel	RX Frequency NVW	RX Tone/NAC	TX Frequency NVW	TX Tone/NAC	Mode
COMMAND	3 - NIFC C-10	170.4125N		165.9625N	T3-131.8	A
COMMAND	4 - NIFC C-11	170.6875N		166.5750N	T3 - 131.8	A
COMMAND	5 - NIFC C-28	173.5000		165.3875	T3 - 131.8	A
TACTICAL	7 - VTAC 11	151.1375N	T6 - 156.7	151.1375N	T6 - 156.7	A
AIR TO GROUND	13 - AG TAC	165.3625N		165.3625N		A
AIR TO GROUND	14 - A/G CMD	169.7250N		169.7250N		A
9. Prepared By (Resource Unit Leader)		Approved By (Planning Section Chief)		Date	Time	
GARY BISHOP		MITCH DHIEL <i>Dickel</i>		08/12/2020	2000	

Division/Group Assignment List (ICS 204 WF) Controlled Unclassified Information//Basic

1. Incident Name: RED SALMON COMPLEX		3. Branch: I		Division/Group: D			
2. Operational Period: 24 HOUR				Date/Time From: 08/13/2020 0600 THU			
				Date/Time To: 08/14/2020 0600 FRI			
4. Operations Personnel							
OPERATIONS CHIEF		JAKE CAGLE		BRANCH DIRECTOR			
DIVISION/GROUP SUPERVISOR		GLENN WEBB (O-129) LWD 8/15		MATT REIDY GORDON MEYER (O-237) LWD 8/14 (T)			
				AIR ATTACK SUPERVISOR			
5. Resources Assigned this Period							
Strike Team / Task Force / Resource Designator		LWD	Leader	Number Persons	Drop Off PT./Time	Pick Up PT./Time	
CREW - T1 - SALMON RIVER IHC (C-3) A		08/23	KELSEY LOFDAHL	19	RED SPIKE/0600	RED SPIKE/1800	
CREW - T2 - BIRRUETA 17023 (C-32)		08/17	JUAN BIRRUETA	20	RED SPIKE/0600	RED SPIKE/1800	
WFM - T1 - UNAWEEP O-93		08/14	KELLY BOYD	9	RED SPIKE/0600	RED SPIKE/1800	
ENG - T3 - SRF 323 (E-169)		08/18	TOMAS VARGAS	6	RED SPIKE/0600	RED SPIKE/1800	
ENG - T3 - SHF 362 (E-11)		08/22	LONNY HAGEDON	5	RED SPIKE/0600	RED SPIKE/1800	
ENG - T3 - SHF 343 (E-21)		08/22	SHAWN ZICKEFFOOSE	5	RED SPIKE/0600	RED SPIKE/1800	
ENG - T3 - SHF 313 (E-7)		08/22	ELLIOT GROO	5	RED SPIKE/0600	RED SPIKE/1800	
ENG - T3 - BDF 317 (E-9) Dumbdad		08/13		5	RED SPIKE/0600	RED SPIKE/1800	
ENG - T6 - GRAYBACK 35 (E-46)		08/13	TIM HENAGIN	3	RED SPIKE/0600	RED SPIKE/1800	
WT - T2 - SRF 15 (E-174) A		08/19	MICHAEL ESPINOZA	2	RED SPIKE/0600	RED SPIKE/1800	
FALM - T1 - MOEN TIMBER (O-99)		08/13	TOM DAVIS	2	RED SPIKE/0600	RED SPIKE/1800	
FALM - T1 - PACIFIC RIDGELINE (O-101)		08/13	GAVRIEL SOTELA	2	RED SPIKE/0600	RED SPIKE/1800	
TFLD (O-66)		08/13	AMOS LEE	1	RED SPIKE/0600	RED SPIKE/1800	
EMPF (O-26)		08/14	ANDREW GOETILE	1	RED SPIKE/0600	RED SPIKE/1800	
EMPF (O-31)		08/16	KEVIN CULBERTSON	1	RED SPIKE/0600	RED SPIKE/1800	
EMPF (O-357) O-2293		08/21	PETER LARSON Peter Larson	1	RED SPIKE/0600	RED SPIKE/1800	
EMTF (O-295)		08/19	JOBEE FARRER	1	RED SPIKE/0600	RED SPIKE/1800	
SOF2 O-427		08/25	GEORGE LIBERCAJT	1	RED SPIKE/0600	RED SPIKE/1800	
8. Division/Group Communication Summary							
Function	Channel	RX Frequency N/W	RX Tone/NAC	TX Frequency N/W	TX Tone/NAC	Mode	
COMMAND	3 - NIFC C10	170.4125N		165.9625N	T3-131.8	A	
COMMAND	4 - NIFC C11	170.6875N		166.5750N	T3 - 131.8	A	
COMMAND	5 - NIFC C28	173.5000N		165.3875N	T3 - 131.8	A	
TACTICAL	8 - VTAC 12	154.4525N	T6 - 156.7	154.4525N	T6 - 156.7	A	
AIR TO GROUND	13 - A/G TAC	165.3625N		165.3625N		A	
AIR TO GROUND	14 - A/G CMD	169.7250N		169.7250N		A	
9. Prepared By (Resource Unit Leader) GARY BISHOP		Approved By (Planning Section Chief) MITCH DHEE- Diana		Date	08/12/2020	Time	2000

Division/Group Assignment List (ICS 204 WF) Controlled Unclassified Information//Basic

1. Incident Name: RED SALMON COMPLEX		1. Branch: Division/Group:	
2. Operational Period: 24 HOUR		Date/Time From: 08/13/2020 0600 THU	Date/Time To: 08/14/2020 0600 FRI
4. OPERATIONS CHIEF JAKE CAGLE		Operations Personnel	
DIVISION/GROUP SUPERVISOR GLENN WEBB (O-129) LWD 8/15		BRANCH DIRECTOR MATT REIDY	AIR ATTACK SUPERVISOR GORDON MEYER (O-237) LWD 8/14 (T)
5. Resources Assigned this Period			
Strike Team / Task Force / Resource Designator	LWD	Leader	Number Persons
SOFR (O-391)	08/25	RICKY MEADOWS	1
6. Control Operations/Work Assignments: Hold and patrol containment lines. Burn as needed when conditions permit.			
7. Special Instructions: Utilize MIST tactics. All line resources will spike overnight. Utilize READ's for cultural and environmental resource concerns. ID helispots and drop points, get lat-longs. Please return nets, swivels, and ice chests. Back-haul trash and excess equipment. All resources use QR code to check-in. Do not post lookouts on any bed rock out cropping without first getting clearance from REAF or READ. **ARCHS / REAFs** will check in / out with DIVS when entering and leaving their divisions. SMA REMS-6 Available for Branch I			
8. Division/Group Communication Summary:			
Function	Channel	RX Frequency N/W	RX Tone/NAC
COMMAND	3 - NIFC C10	170.4125N	
COMMAND	4 - NIFC C11	170.6875N	
COMMAND	5 - NIFC C28	173.5000N	
TACTICAL	8 - VTAC 12	154.4525N	T6 - 156.7
AIR TO GROUND	13 - AIG TAC	165.3625N	
AIR TO GROUND	14 - AIG CMD	169.7250N	
9. Prepared By (Resource Unit Leader)		Approved By (Planning Section Chief)	
GARY BISHOP		MITCH DHEIL <i>Diehl</i>	
Date	08/12/2020	Time	2000

Division/Group Assignment List (ICS 204 WF) Controlled Unclassified Information//Basic

4. Incident Name: RED SALMON COMPLEX		3.		Branch: V		Division/Group: M/N																																																																																																													
2. Operational Period: 24 HOUR				Date/Time From: 08/13/2020 0600	THU	Date/Time To: 08/14/2020 0600	FRI																																																																																																												
4. Operations Personnel				OPERATIONS CHIEF JEFF HINSON (O-1.8) LWD 8/13		BRANCH DIRECTOR ROBERT BERTOLINA (O-248) LWD 8/18 DANIEL OBERG (O-271) LWD 8/19 (T)																																																																																																													
5. Resources Assigned this Period				DIVISION/GROUP SUPERVISOR TONY RIVERS (O-398) LWD 8/19																																																																																																															
<table border="1" style="width: 100%; border-collapse: collapse;"> <thead> <tr> <th style="width: 30%;">Strike Team / Task Force / Resource Designator</th> <th style="width: 10%;">LWD</th> <th style="width: 15%;">Leader</th> <th style="width: 10%;">Number Persons</th> <th style="width: 15%;">Drop Off PT./Time</th> <th style="width: 10%;">Pick Up PT./Time</th> </tr> </thead> <tbody> <tr> <td>CREW - T2 - PAT RICK 17002 (C-10)</td> <td>08/14</td> <td>GARTH CHAMBERS</td> <td>20</td> <td>SALMON SPIKE/0600</td> <td>SALMON SPIKE/1800</td> </tr> <tr> <td>CREW - T2 - GRIZZLY 17030 (C-35)</td> <td>08/17</td> <td>FERNANDO PEREZ</td> <td>20</td> <td>SALMON SPIKE/0600</td> <td>SALMON SPIKE/1800</td> </tr> <tr> <td>CREW - T2 - GRIZZLY 17029 (C-34)</td> <td>08/17</td> <td>SOLIZE ORTIZ</td> <td>20</td> <td>SALMON SPIKE/0600</td> <td>SALMON SPIKE/1800</td> </tr> <tr> <td>CREW - T2 - BIRRUETA 17024 (C-33)</td> <td>08/17</td> <td>JUAN BIRRUETA</td> <td>20</td> <td>SALMON SPIKE/0600</td> <td>SALMON SPIKE/1800</td> </tr> <tr> <td>CREW - T2 - FRANCO 17065 (C-23)</td> <td>08/13</td> <td>JESUS CISNEROS</td> <td>20</td> <td>SALMON SPIKE/0600</td> <td>SALMON SPIKE/1800</td> </tr> <tr> <td>ENG - T6 - GRT 112 (E-47)</td> <td>08/14</td> <td>DANIEL SCHRAMM</td> <td>2</td> <td>SALMON SPIKE/0600</td> <td>SALMON SPIKE/1800</td> </tr> <tr> <td>ENG - T6 - GRT 115 (E-50)</td> <td>08/14</td> <td>WAYLON RICH</td> <td>3</td> <td>SALMON SPIKE/0600</td> <td>SALMON SPIKE/1800</td> </tr> <tr> <td>WT - T2 - PNF 21 E-124</td> <td>08/12</td> <td>CHRIS RHODE</td> <td>2</td> <td></td> <td></td> </tr> <tr> <td>TFLD (O-8)</td> <td>08/14</td> <td>JEFFREY ARCHER</td> <td>1</td> <td>SALMON SPIKE/0600</td> <td>SALMON SPIKE/1800</td> </tr> <tr> <td>HECM</td> <td></td> <td>TBD</td> <td>4</td> <td>SALMON SPIKE/0600</td> <td>SALMON SPIKE/1800</td> </tr> <tr> <td>REMS - MOD - XSO (O-344) BRANCH RESOURCE</td> <td>08/20</td> <td>MICHAEL RUDOLPH</td> <td>4</td> <td>SALMON SPIKE/0600</td> <td>SALMON SPIKE/1800</td> </tr> <tr> <td>EMPF (O-28)</td> <td>08/14</td> <td>STEVEN PENTELEI- MOLNAR</td> <td>1</td> <td>SALMON SPIKE/0600</td> <td>SALMON SPIKE/1800</td> </tr> <tr> <td>EMPF (O-356)</td> <td>08/21</td> <td>ERIK GUSTAFSON</td> <td>1</td> <td>SALMON SPIKE/0600</td> <td>SALMON SPIKE/1800</td> </tr> <tr> <td>EMPF (O-359)</td> <td>08/21</td> <td>ZACK STETSON</td> <td>1</td> <td>SALMON SPIKE/0600</td> <td>SALMON SPIKE/1800</td> </tr> <tr> <td>EMTF (O-294)</td> <td>08/19</td> <td>MICHAEL RAMSEY</td> <td>1</td> <td>SALMON SPIKE/0600</td> <td>SALMON SPIKE/1800</td> </tr> <tr> <td>EMPF (E-251.1)</td> <td>08/17</td> <td>AMARISA CASWELL</td> <td>1</td> <td>SALMON SPIKE/0600</td> <td>SALMON SPIKE/1800</td> </tr> <tr> <td>SOFR (O-4)</td> <td>08/15</td> <td>DON FOCO</td> <td>1</td> <td>SALMON SPIKE/0600</td> <td>SALMON SPIKE/1800</td> </tr> </tbody> </table>								Strike Team / Task Force / Resource Designator	LWD	Leader	Number Persons	Drop Off PT./Time	Pick Up PT./Time	CREW - T2 - PAT RICK 17002 (C-10)	08/14	GARTH CHAMBERS	20	SALMON SPIKE/0600	SALMON SPIKE/1800	CREW - T2 - GRIZZLY 17030 (C-35)	08/17	FERNANDO PEREZ	20	SALMON SPIKE/0600	SALMON SPIKE/1800	CREW - T2 - GRIZZLY 17029 (C-34)	08/17	SOLIZE ORTIZ	20	SALMON SPIKE/0600	SALMON SPIKE/1800	CREW - T2 - BIRRUETA 17024 (C-33)	08/17	JUAN BIRRUETA	20	SALMON SPIKE/0600	SALMON SPIKE/1800	CREW - T2 - FRANCO 17065 (C-23)	08/13	JESUS CISNEROS	20	SALMON SPIKE/0600	SALMON SPIKE/1800	ENG - T6 - GRT 112 (E-47)	08/14	DANIEL SCHRAMM	2	SALMON SPIKE/0600	SALMON SPIKE/1800	ENG - T6 - GRT 115 (E-50)	08/14	WAYLON RICH	3	SALMON SPIKE/0600	SALMON SPIKE/1800	WT - T2 - PNF 21 E-124	08/12	CHRIS RHODE	2			TFLD (O-8)	08/14	JEFFREY ARCHER	1	SALMON SPIKE/0600	SALMON SPIKE/1800	HECM		TBD	4	SALMON SPIKE/0600	SALMON SPIKE/1800	REMS - MOD - XSO (O-344) BRANCH RESOURCE	08/20	MICHAEL RUDOLPH	4	SALMON SPIKE/0600	SALMON SPIKE/1800	EMPF (O-28)	08/14	STEVEN PENTELEI- MOLNAR	1	SALMON SPIKE/0600	SALMON SPIKE/1800	EMPF (O-356)	08/21	ERIK GUSTAFSON	1	SALMON SPIKE/0600	SALMON SPIKE/1800	EMPF (O-359)	08/21	ZACK STETSON	1	SALMON SPIKE/0600	SALMON SPIKE/1800	EMTF (O-294)	08/19	MICHAEL RAMSEY	1	SALMON SPIKE/0600	SALMON SPIKE/1800	EMPF (E-251.1)	08/17	AMARISA CASWELL	1	SALMON SPIKE/0600	SALMON SPIKE/1800	SOFR (O-4)	08/15	DON FOCO	1	SALMON SPIKE/0600	SALMON SPIKE/1800
Strike Team / Task Force / Resource Designator	LWD	Leader	Number Persons	Drop Off PT./Time	Pick Up PT./Time																																																																																																														
CREW - T2 - PAT RICK 17002 (C-10)	08/14	GARTH CHAMBERS	20	SALMON SPIKE/0600	SALMON SPIKE/1800																																																																																																														
CREW - T2 - GRIZZLY 17030 (C-35)	08/17	FERNANDO PEREZ	20	SALMON SPIKE/0600	SALMON SPIKE/1800																																																																																																														
CREW - T2 - GRIZZLY 17029 (C-34)	08/17	SOLIZE ORTIZ	20	SALMON SPIKE/0600	SALMON SPIKE/1800																																																																																																														
CREW - T2 - BIRRUETA 17024 (C-33)	08/17	JUAN BIRRUETA	20	SALMON SPIKE/0600	SALMON SPIKE/1800																																																																																																														
CREW - T2 - FRANCO 17065 (C-23)	08/13	JESUS CISNEROS	20	SALMON SPIKE/0600	SALMON SPIKE/1800																																																																																																														
ENG - T6 - GRT 112 (E-47)	08/14	DANIEL SCHRAMM	2	SALMON SPIKE/0600	SALMON SPIKE/1800																																																																																																														
ENG - T6 - GRT 115 (E-50)	08/14	WAYLON RICH	3	SALMON SPIKE/0600	SALMON SPIKE/1800																																																																																																														
WT - T2 - PNF 21 E-124	08/12	CHRIS RHODE	2																																																																																																																
TFLD (O-8)	08/14	JEFFREY ARCHER	1	SALMON SPIKE/0600	SALMON SPIKE/1800																																																																																																														
HECM		TBD	4	SALMON SPIKE/0600	SALMON SPIKE/1800																																																																																																														
REMS - MOD - XSO (O-344) BRANCH RESOURCE	08/20	MICHAEL RUDOLPH	4	SALMON SPIKE/0600	SALMON SPIKE/1800																																																																																																														
EMPF (O-28)	08/14	STEVEN PENTELEI- MOLNAR	1	SALMON SPIKE/0600	SALMON SPIKE/1800																																																																																																														
EMPF (O-356)	08/21	ERIK GUSTAFSON	1	SALMON SPIKE/0600	SALMON SPIKE/1800																																																																																																														
EMPF (O-359)	08/21	ZACK STETSON	1	SALMON SPIKE/0600	SALMON SPIKE/1800																																																																																																														
EMTF (O-294)	08/19	MICHAEL RAMSEY	1	SALMON SPIKE/0600	SALMON SPIKE/1800																																																																																																														
EMPF (E-251.1)	08/17	AMARISA CASWELL	1	SALMON SPIKE/0600	SALMON SPIKE/1800																																																																																																														
SOFR (O-4)	08/15	DON FOCO	1	SALMON SPIKE/0600	SALMON SPIKE/1800																																																																																																														
8. Division/Group Communication Summary																																																																																																																			
Function	Channel	RX Frequency NW	RX Tone/NAC	TX Frequency NW	TX Tone/NAC	Mode																																																																																																													
COMMAND	3 - NIFC C10	170.4125N		165.9625N	T3-131.8	A																																																																																																													
COMMAND	4 - NIFC C11	170.6875N		166.5750N	T3 - 131.8	A																																																																																																													
COMMAND	5 - NIFC C28	173.5000N		165.3875N	T3-131.8	A																																																																																																													
TACTICAL	7 - NIFC TAC 3	168.6000N		168.6000N		A																																																																																																													
TACTICAL	8 - NIFC TAC 5	166.7250N		166.7250N		A																																																																																																													
AIR TO GROUND	13 - AG TAC	165.3625N		165.3625N		A																																																																																																													
AIR TO GROUND	14 - AG CMD	169.7250N		169.7250N		A																																																																																																													
9. Prepared By (Resource Unit Leader) GARY BISHOP		Approved By (Planning Section Chief) MITCH DHEE <i>DiDm</i>		Date 08/12/2020	Time 2000																																																																																																														

Division/Group Assignment List (ICS 204 WF)
Controlled Unclassified Information//Basic

1. Incident Name: RED SALMON COMPLEX		3.		Branch:	Division/Group:
2. Operational Period: 24 HOUR		Date/Time From: 08/13/2020 0600	Date/Time To: 08/14/2020 0600	V	M/N
4. Operations Personnel					
OPERATIONS CHIEF JEFF HINSON (O-1.8) LWD 8/13		BRANCH DIRECTOR ROBERT BERTOLINA (O-248) LWD 8/18			
DIVISION/GROUP SUPERVISOR TONY RIVERS (O-398) LWD 8/19		DANIEL OBERG (O-271) LWD 8/19 (T)			

Resources Assigned this Period					
Strike Team / Task Force / Resource Designator	LWD	Leader	Number Persons	Drop Off PT./Time	Pick Up PT./Time
REAF (O-217)	08/15	BRUCE ROBERT CANN	1	SALMON SPIKE/0600	SALMON SPIKE/1800
REAF (O-382)	8/21	ALEX WATT'S-TOBIN	1	SALMON SPIKE/0600	SALMON SPIKE/1800

6. Control Operations/Work Assignments:
 Hold and mop up direct headline.

7. Special Instructions:
 Utilize MIST tactics.
 All line resources will spike overnight.
 All resources use QR code for check-in.
 Utilize READ's for cultural resources concerns.
 ID helispots and drop points get lat and longs.
 Backhaul trash and excess equipment.
 Do not post lookouts on any bed rock out cropping without first getting clearance from REAF or READ.

ARCHS / REAFs Will check in / out with DIVS when entering and leaving their divisions.

Division/Group Communication Summary						
Function	Channel	RX Frequency NW	RX Tone/NAC	TX Frequency NW	TX Tone/NAC	Mode
COMMAND	3 - NIFC C10	170.4125N		165.9625N	T3-131.8	A
COMMAND	4 - NIFC C11	170.6875N		166.5750N	T3 - 131.8	A
COMMAND	5 - NIFC C28	173.5000N		165.3875N	T3-131.8	A
TACTICAL	7 - NIFC TAC 3	168.6000N		168.6000N		A
TACTICAL	8 - NIFC TAC 5	166.7250N		166.7250N		A
AIR TO GROUND	13 - A/G TAC	165.3625N		165.3625N		A
AIR TO GROUND	14 - A/G CMD	169.7250N		169.7250N		A
9. Prepared By (Resource Unit Leader)		Approved By (Planning Section Chief)		Date	Time	
GARY BISHOP		MITCH DHIE- <i>Diel</i>		08/12/2020	2000	

Division/Group Assignment List (ICS 204 WF) Controlled Unclassified Information//Basic

1. Incident Name: RED SALMON COMPLEX		3.		Branch: 		Division/Group: 	
2. Operational Period: 24 HOUR				Operations Personnel			
Date/Time From: 08/13/2020 0600		Date/Time To: 08/14/2020 0600		V		O	
OPERATIONS CHIEF				BRANCH DIRECTOR			
		JEFF HINSON (O-1.8) LWD 8/13				ROBERT BERTOLINA (O-248) LWD 8/18	
DIVISION/GROUP SUPERVISOR		ZACK BECKER (O-255) LWD 8/16 B. OBERHARDT (O-264) LWD 8/13 (T)				DANIEL OBERG (O-271) LWD 8/19 (T)	
Resources Assigned this Period							
Strike Team / Task Force / Resource Designator		LWD	Leader	Number Persons	Drop Off PT./Time	Pick Up PT./Time	
CREW - T1 - TAHOE IHC C-9		08/18	DANIEL GUERRERO	21	BACKBONE SPIKE/0600	BACKBONE SPIKE/1800	
CREW - T1 - PAYSON IHC (C-5)		08/15	MIKE SCHINSTOCK	20	BACKBONE SPIKE/0600	BACKBONE SPIKE/1800	
CREW - T2IA - FIRESTORM 4 (C-46)		08/19	BEN PAVAN	20	BACKBONE SPIKE/0600	BACKBONE SPIKE/1800	
CREW - T1 - KLAMATH 14 (C-44)		08/20	CHEVVO MUNK	20	BACKBONE SPIKE/0600	BACKBONE SPIKE/1800	
ENG - T3 - NORTHWEST 804 E-112		08/16	MATT STORMS	4	BACKBONE SPIKE/0600	BACKBONE SPIKE/1800	
ENG - T3 - AZ 55 E-111		08/16	TIM SNYDER	4	BACKBONE SPIKE/0600	BACKBONE SPIKE/1800	
WT - S2 - INF 21 E-31		08/14	KEN ZHEOL	2	BACKBONE SPIKE/0600	BACKBONE SPIKE/1800	
FALM - T1 - NORTH ZONE FALLERS (O-100)		08/13	KEITH STEWARD	2	BACKBONE SPIKE/0600	BACKBONE SPIKE/1800	
FALM - T1 - REDWOOD EMPIRE (O-102)		08/13	JESSE GONZALEZ	2	BACKBONE SPIKE/0600	BACKBONE SPIKE/1800	
HECM			TBD	4	BACKBONE SPIKE/0600	BACKBONE SPIKE/1800	
PACKER 1		08/15	KENNY GRAVES	5	BACKBONE SPIKE/0600	BACKBONE SPIKE/1800	
TFLD (O-350)		08/21	JOHN ESCALERA	1	BACKBONE SPIKE/0600	BACKBONE SPIKE/1800	
FELB (O-64.1)		08/13	ZACHARY PIGATTI	1	BACKBONE SPIKE/0600	BACKBONE SPIKE/1800	
FELB (O-276)		08/19	JOSHUA STEELE	1	BACKBONE SPIKE/0600	BACKBONE SPIKE/1800	
Division/Group Communication Summary							
Function	Channel	RX Frequency NW	RX Tone/NAC	TX Frequency NW	TX Tone/NAC	Mode	
COMMAND	3 - NIFC C10	170.4125N		165.9625N	T3-131.8	A	
COMMAND	4 - NIFC C11	170.6875N		166.5750N	T3 - 131.8	A	
COMMAND	5 - NIFC C28	173.5000N		165.3875N	T3-131.8	A	
TACTICAL	7 - NIFC TAC 3	168.6000N		168.6000N		A	
TACTICAL	8 - NIFC TAC 5	166.7250N		166.7250N		A	
AIR TO GROUND	13 - AG TAC	165.3625N		165.3625N		A	
AIR TO GROUND	14 - AG CMD	169.7250N		169.7250N		A	
9. Prepared By (Resource Unit Leader)		Approved By (Planning Section Chief)		Date		Time	
GARY BISHOP		MITCH BHEE <i>Dion</i>		08/12/2020		2000	

Division/Group Assignment List (ICS 204 WF)
 Controlled Unclassified Information//Basic

1. Incident Name: RED SALMON COMPLEX		3. Branch: V		Division/Group: O	
2. Operational Period: 24 HOUR		Date/Time From: 08/13/2020 0600	Date/Time To: 08/14/2020 0600	FRI	

4. Operations Personnel	
OPERATIONS CHIEF JEFF HINSON (O-1.8) LWD 8/13	BRANCH DIRECTOR ROBERT BERTOLINA (O-248) LWD 8/18 DANIEL OBERG (O-271) LWD 8/19 (T)
DIVISION/GROUP SUPERVISOR ZACK BECKER (O-255) LWD 8/16 B. OBERHARDT (O-264) LWD 8/13 (T)	

5. Resources Assigned this Period						
Strike Team / Task Force / Resource Designator	LWD	Leader	Number Persons	Drop Off PT./Time	Pick Up PT./Time	
FOBS (O-10)	08/21	MATTHEW SNYDER	1	BACKBONE SPIKE/0600	BACKBONE SPIKE/1800	
EMPF (O-25)	08/13	THOMAS ZAMORA	1	BACKBONE SPIKE/0600	BACKBONE SPIKE/1800	
REMS - MOD - FRF (O-344)	08/20	MICHAEL RUDOLPH	4	BACKBONE SPIKE/0600	BACKBONE SPIKE/1800	
EMTF (O-32)	08/20	NICK MARTINEZ	1	BACKBONE SPIKE/0600	BACKBONE SPIKE/1800	
FOBS (T) (O-188)	08/14	SCOTT POWELL	1	BACKBONE SPIKE/0600	BACKBONE SPIKE/1800	
SOFR (O-127)	08/15	JONATHAN LEE	1	BACKBONE SPIKE/0600	BACKBONE SPIKE/1800	
SOFR (O-177)	08/17	JOHN SPANARELLA	1	BACKBONE SPIKE/0600	BACKBONE SPIKE/1800	
ARCH (O-138)	08/13	MICHAEL PADIAN	1	BACKBONE SPIKE/0600	BACKBONE SPIKE/1800	
REALF (O-364)	08/20	MICHAEL SANCHEZ	1	BACKBONE SPIKE/0600	BACKBONE SPIKE/1800	

6. Control Operations/Work Assignments:
 Hold and mop up direct handlines. Prep for burning along Backbone Ridge.

7. Special Instructions:

8. Division/Group Communication Summary						
Function	Channel	RX Frequency/ NW	RX Tone/NAC	TX Frequency/ NW	TX Tone/NAC	Mode
COMMAND	3 - NIFC C10	170.4125N		165.9625N	T3-131.8	A
COMMAND	4 - NIFC C11	170.6875N		166.5750N	T3 - 131.8	A
COMMAND	5 - NIFC G28	173.5000N		165.3875N	T3-131.8	A
TACTICAL	7 - NIFC TAC 3	168.6000N		168.6000N		A
TACTICAL	8 - NIFC TAC 5	166.7250N		166.7250N		A
AIR TO GROUND	13 - A/G TAC	165.3625N		165.3625N		A
AIR TO GROUND	14 - A/G CMD	169.7250N		169.7250N		A
9. Prepared By (Resource Unit Leader) GARY BISHOP		Approved By (Planning Section Chief) MITCH DHIEL <i>Dhiel</i>		Date 08/12/2020	Time 2000	

Division/Group Assignment List (ICS 204 WF) Controlled Unclassified Information//Basic

1. Incident Name:		3.				
RED SALMON COMPLEX		Branch:	Division/Group:			
		V	O			
2. Operational Period: 24 HOUR						
Date/Time From:	THU	Date/Time To:	FRI			
08/13/2020 0600		08/14/2020 0600				
4. Operations Personnel						
OPERATIONS CHIEF	JEFF HINSON (O-1.8) LWD 8/13	BRANCH DIRECTOR	ROBERT BERTOLINA (O-248) LWD 8/18 DANIEL OBERG (O-271) LWD 8/19 (T)			
DIVISION/GROUP SUPERVISOR	ZACK BECKER (O-255) LWD 8/16 B. OBERHARDT (O-264) LWD 8/13 (T)					
7. Special Instructions:						
Utilize Mist tactics. All line resources will spike overnight.						
Utilize READ's for Cultural Resources concerns.						
ID helispots and drop points, get lat-longs and provide to DIVS.						
Backhaul trash and excess equipment.						
Do not post lookouts on any bed rock out cropping without first getting clearance from REAF or READ.						
ARCHS / REAFs Will check in / out with DIVS when entering and leaving their divisions.						
8. Division/Group Communication Summary						
Function	Channel	RX Frequency/NW	RX Tone/NAC	TX Frequency/NW	TX Tone/NAC	Mode
COMMAND	3 - NIFC C10	170.4125N		165.9625N	T3-131.8	A
COMMAND	4 - NIFC C11	170.6875N		166.5750N	T3 - 131.8	A
COMMAND	5 - NIFC C28	173.5000N		165.3875N	T3-131.8	A
TACTICAL	7 - NIFC TAC 3	168.6000N		168.6000N		A
TACTICAL	8 - NIFC TAC 5	166.7250N		166.7250N		A
AIR TO GROUND	13 - A/G TAC	165.3625N		165.3625N		A
AIR TO GROUND	14 - A/G CMD	169.7250N		169.7250N		A
9. Prepared By (Resource Unit Leader)		Approved By (Planning Section Chief)				
GARY BISHOP		MITCH DHELL <i>Dhell</i>				
		Date	Time			
		08/12/2020	2000			

Division/Group Assignment List (ICS 204 WF)
Controlled Unclassified Information//Basic

3

1. Incident Name: **RED SALMON COMPLEX**

2. Operational Period: **24 HOUR**

Date/Time From: **08/13/2020 0600** THU Date/Time To: **08/14/2020 0600** FRI

Branch: **V** Division/Group: **P**

4. Operations Personnel

OPERATIONS CHIEF	JACOB A CAGLE	BRANCH DIRECTOR	ROBERT BERTOLINA
DIVISION/GROUP SUPERVISOR	TRAVIS STOUT KEVIN NORTON (T)	AIR ATTACK SUPERVISOR	DANIEL OBERG (T)

5. Resources Assigned this Period

Strike Team / Task Force / Resource Designator	LWD	Leader	Number Persons	Drop Off PT./Time	Pick Up PT./Time
EMPF (O-24)	08/13	JULIAN CHRISTY	1	BEARHOLE SPIKE/0600	BEARHOLE SPIKE/1800
EMPF (O-27)	08/16	RICHARD TALIAFERRO	1	BEARHOLE SPIKE/0600	BEARHOLE SPIKE/1800
EMPF (O-387)	08/22	TRAVIS CRUMPACKER	1	BEARHOLE SPIKE/0600	BEARHOLE SPIKE/1800
EMTF (O-390)	08/22	MIKE HAPKE	1	BEARHOLE SPIKE/0600	BEARHOLE SPIKE/1800
REMS - O-344	08/20	FRF REMS	4	BEARHOLE SPIKE/0600	BEARHOLE SPIKE/1800
REAF O-364	08/20	MICHAEL SANCHEZ	1	BEARHOLE SPIKE/0600	BEARHOLE SPIKE/1800
ARCH (O-138)	08/13	MICHAEL PADIAN	1	BEARHOLE SPIKE/0600	BEARHOLE SPIKE/1800
ARCH (O-218)	08/17	STEVEN SOLORIO	1	BEARHOLE SPIKE/0600	BEARHOLE SPIKE/1800
REAF O-384	08/23	ERIK RADEMACHER	1	BEARHOLE SPIKE/0600	BEARHOLE SPIKE/1800

6. Control Operations/Work Assignments:
Scout and locate line locations.

7. Special Instructions:
Utilize Mist tactics. All line resources will spike overnight. Backhaul trash and excess equipment. Utilize READ's for Cultural Resources concerns. ID helispots and drop points, get lat-longs and provide to DIVS. Do not post lookouts on any bed rock out cropping without first getting clearance from REAF or READ.

ARCHS / REAFs Will check in / out with DIVS when entering and leaving their divisions.

8. Division/Group Communication Summary

Function	Channel	RX Frequency / NW	RX Tone/NAC	TX Frequency / NW	TX Tone/NAC	Mode
COMMAND	2	170.4250N		168.0750N	T3-131.8	A
COMMAND	4	170.6875N		166.5750N	T4 - 136.5	A
COMMAND	5	173.5000N		165.3875N	T3-131.8	A
TACTICAL	10	168.2500N		168.2500N		A
AIR TO GROUND	13	165.3625N		165.3625N		A
AIR TO GROUND	14	169.7250N		169.7250N		A

9. Prepared By (Resource Unit Leader) **JEREMY CAMACHO** Approved By (Planning Section Chief) **MITCH DHIE: *Diem*** Date **08/13/2020** Time **2000**

Division/Group Assignment List (IGS 204 WF)
Controlled Unclassified Information//Basic

1. Incident Name: RED SALMON COMPLEX		3.		Branch: VII	Division/Group: U	
2. Operational Period: 24 HOUR		Date/Time From: 08/13/2020 0600	Date/Time To: 08/14/2020 0600	FRI		
4. Operations Personnel						
OPERATIONS CHIEF	JACOB A CAGLE	BRANCH DIRECTOR		STEVE BURNS (O-282) LWD 8/17 PAUL JOHNSON (O-252) LWD 8/16 (T)		
DIVISION/GROUP SUPERVISOR	BILL ROBINSON (O-131) LWD 8/13 ROBERT HOYLE (O-115) LWD 8/14 (T)	AIR ATTACK SUPERVISOR				
5. Resources Assigned this Period						
Strike Team / Task Force / Resource Designator	LWD	Leader	Number Persons	Drop Off PT./Time	Pick Up PT./Time	
CREW - T1 - INYO IHC (C-54)	08/20	JOEL SCHILLING	20	DAMINGO SPIKE/0600	DAMINGO SPIKE/1800	
CREW - TZ1A - GA CHF 2 (C-41)	08/21	JOHN BARER <i>James Barber</i>	20	DAMINGO SPIKE/0600	DAMINGO SPIKE/1800	
CREW - TZ1A - FL STATE 7 (C-40)	08/21	DAVID SECHRIST	20	DAMINGO SPIKE/0600	DAMINGO SPIKE/1800	
WFM - T1 - BLACK HILLS (O-92)	08/15	LEE DUEKER	10	DAMINGO SPIKE/0600	DAMINGO SPIKE/1800	
WFM - T1 - SELWAY (O-94)	08/14	JAMES WIMMER	7	DAMINGO SPIKE/0600	DAMINGO SPIKE/1800	
ENG - T3 - SRF 311 (E-233)	08/21	BROCK MCCULLOCH	5	DAMINGO SPIKE/0600	DAMINGO SPIKE/1800	
WT - T2 - KNF 279 (E-236)	08/21	STACIE CICAIRIOS	2	DAMINGO SPIKE/0600	DAMINGO SPIKE/1800	
DOZ - T4 - SRF (E-165)	08/19	JAKE MOORE	2	DAMINGO SPIKE/0600	DAMINGO SPIKE/1800	
DOZ - T2 - LONESTAR (E-148)	08/19	MATT SWANK	2	DAMINGO SPIKE/0600	DAMINGO SPIKE/1800	
SKIDGEN - T2 - LET ER BUCK (E-221)	08/21	STEVE LASSEN	2	DAMINGO SPIKE/0600	DAMINGO SPIKE/1800	
FALM - T1 - NORTH ZONE FALLERS (O-283)	08/18	GARY BURG	2	DAMINGO SPIKE/0600	DAMINGO SPIKE/1800	
FALM - T1 - NORTH ZONE FALLERS (O-285)	08/18	JEREMY MASON	2	DAMINGO SPIKE/0600	DAMINGO SPIKE/1800	
TFLD (O-458)	08/18	JAMES M SCOTT	1	DAMINGO SPIKE/0600	DAMINGO SPIKE/1800	
FELB (O-275)	08/19	MARIO MARQUEZ	1	DAMINGO SPIKE/0600	DAMINGO SPIKE/1800	
HEQB (O-211)	08/14	JACOB WRIGHT	1	DAMINGO SPIKE/0600	DAMINGO SPIKE/1800	
REMS - RENO 19 - ALS (O-317)	08/20	PETER FITCH	4	DAMINGO SPIKE/0600	DAMINGO SPIKE/1800	
EMTF (O-297)	08/19	KYLE MALLINGER	1	DAMINGO SPIKE/0600	DAMINGO SPIKE/1800	
EMPF (O-290)	08/19	RYAN SWICK	1	DAMINGO SPIKE/0600	DAMINGO SPIKE/1800	
8. Division/Group Communication Summary						
Function	Channel	RX Frequency NW	RX Tone/NAC	TX Frequency NW	TX Tone/NAC	Mode
COMMAND	3 - NIFC C10	170.4125N		165.9625N	T3-131.8	A
COMMAND	4 - NIFC C11	170.6875N		166.5750N	T3 - 131.8	A
COMMAND	5 - NIFC C28	173.5000N		165.3875N	T3-131.8	A
TACTICAL	12 - R5 TAC 6	168.2375N		168.2375N		A
AIR TO GROUND	13 - A/G TAC	165.3625N		165.3625N		A
AIR TO GROUND	14 - A/G	169.7250N		169.7250N		A
9. Prepared By (Resource Unit Leader)		Approved By (Planning Section Chief)		Date	Time	
JEREMY CAMACHO		MITCH DHIEL <i>Dem</i>		08/12/2020	2000	

Division/Group Assignment List (ICS 204 WF)
Controlled Unclassified Information//Basic

1. Incident Name: RED SALMON COMPLEX		3.		Branch:	Division/Group:
2. Operational Period: 24 HOUR		Date/Time From: 08/13/2020 0600	Date/Time To: 08/14/2020 0600	VII	U
4. Operations Personnel					
OPERATIONS CHIEF	JACOB A CAGLE	BRANCH DIRECTOR	STEVE BURNS (O-282) LWD 8/17 PAUL JOHNSON (O-252) LWD 8/16 (T)		
DIVISION/GROUP SUPERVISOR	BILL ROBINSON (O-131) LWD 8/13 ROBERT HOYLE (O-115) LWD 8/14 (T)	AIR ATTACK SUPERVISOR			

5. Resources Assigned this Period						
Strike Team / Task Force / Resource Designator	LWD	Leader	Number Persons	Drop Off PT./Time	Pick Up PT./Time	
SOFR (O-128)	08/19	JEFFREY KERR	1	DAMINGO SPIKE/0600	DAMINGO SPIKE/1800	
ARCH (O-219)	08/13	PAULA JANE HERTFELDER	1	DAMINGO SPIKE/0600	DAMINGO SPIKE/1800	
READ (O-365)	08/20	KEVIN COLEGROVE	1	DAMINGO SPIKE/0600	DAMINGO SPIKE/1800	
REAF (T) (O-439)	08/24	COLLEEN MARIE SLOAN	1	DAMINGO SPIKE/0600	DAMINGO SPIKE/1800	
READ		BILLY AUBREY	1	DAMINGO SPIKE/0600	DAMINGO SPIKE/1800	
CULS		KEDUESHAN LARA-COLGROVE	1	DAMINGO SPIKE/0600	DAMINGO SPIKE/1800	
CULS		CAW-TEP SYLVIA	1	DAMINGO SPIKE/0600	DAMINGO SPIKE/1800	
CULS		ROY AMMON	1	DAMINGO SPIKE/0600	DAMINGO SPIKE/1800	

6. Control Operations/Work Assignments:
Continue to improve the dozer line. Prep Pack Saddle Ridge for firing to the South.
Prep Red Cap Horse Trail.

7. Special Instructions:
Utilize MIST tactics. All line resources will spike overnight. Utilize READ's for cultural resources concerns. ID helispots and drop points get lat and longs and provide to DIVS. Backhaul trash and excess equipment. Do not post lookouts on any bed rock out cropping without first getting clearance from REAF or READ. ARCH / REAFs listed in Division U are shared between Division U, Division W, and Division R. **ARCHS / REAFs** will check in / out with DIVS when entering and leaving their divisions.

8. Division/Group Communication Summary						
Function	Channel	RX Frequency N/W	RX Tone/NAC	TX Frequency N/W	TX Tone/NAC	Mode
COMMAND	3 - NIFC C10	170.4125N		165.9625N	T3-131.8	A
COMMAND	4 - NIFC C11	170.6875N		166.5750N	T3 - 131.8	A
COMMAND	5 - NIFC C28	173.5000N		165.3875N	T3-131.8	A
TACTICAL	12 - R5 TAC 6	168.2375N		168.2375N		A
AIR TO GROUND	13 - A/G TAC	165.3625N		165.3625N		A
AIR TO GROUND	14 - A/G	169.7250N		169.7250N		A

9. Prepared By (Resource Unit Leader) JEREMY CAMACHO		Approved By (Planning Section Chief) MITCH DHEE <i>Dheeh</i>		Date	Time
				08/12/2020	2000

**Division/Group Assignment List (ICS 204 WF)
Controlled Unclassified Information//Basic**

1. Incident Name: RED SALMON COMPLEX		3. Branch: VII		Division/Group: U		
2. Operational Period: 24 HOUR			Date/Time From: 08/13/2020 0600	Date/Time To: 08/14/2020 0600	FRI	
4. Operations Personnel						
OPERATIONS CHIEF		JACOB A CAGLE		BRANCH DIRECTOR		
DIVISION/GROUP SUPERVISOR		BILL ROBINSON (O-131) LWD 8/13 ROBERT HOYLE (O-115) LWD 8/14 (T)		AIR ATTACK SUPERVISOR		
7. Special Instructions: RENO REMS Available for Branch VII						
8. Division/Group Communication Summary						
Function	Channel	RX Frequency N/W	RX Tone/NAC	TX Frequency N/W	TX Tone/NAC	Mode
COMMAND	3 - NIFC C:10	170.4125N		165.9625N	T3-131.8	A
COMMAND	4 - NIFC C:11	170.6875N		166.5750N	T3 - 131.8	A
COMMAND	5 - NIFC C:28	173.5000N		165.3875N	T3-131.8	A
TACTICAL	12 - R5 TAC 6	168.2375N		168.2375N		A
AIR TO GROUND	13 - A/G TAC	165.3625N		165.3625N		A
AIR TO GROUND	14 - A/G	169.7250N		169.7250N		A
9. Prepared By (Resource Unit Leader) JEREMY CAMACHO		Approved By (Planning Section Chief) MITCH DHEIL <i>Dheil</i>		Date	08/12/2020	Time
						2000

Division/Group Assignment List (ICS 204 WF)

Controlled Unclassified Information/Basic

1. Incident Name: RED SALMON COMPLEX		3.		Branch: VII	Division/Group: W
2. Operational Period: 24 HOUR		Date/Time From: 08/13/2020 0600	Date/Time To: 08/14/2020 0600		
	THU		FRI		

4. Operations Personnel			
OPERATIONS CHIEF	JACOB A CAGLE	BRANCH DIRECTOR	GARY MONDAY PAUL JOHNSON
DIVISION/GROUP SUPERVISOR	ROBB BEERY (O-130) LWD 8/15	AIR ATTACK SUPERVISOR	

1. Resources Assigned this Period						
Strike Team / Task Force / Resource Designator	LWD	Leader	Number Persons	Drop Off PT./Time	Pick Up PT./Time	
CREW - T2IA - SHASTA LAKE C-1	08/22	RON GRAVE	19	MILL GAP SPIKE/0600	MILL GAP SPIKE/1800	
CREW - T2IA - GASC 1 C-42	08/21	TROY HELMS	20	MILL GAP SPIKE/0600	MILL GAP SPIKE/1800	
CREW - T2 - GRAYBACK 9 (C-37)	08/18	JUSTIN MAY	20	MILL GAP SPIKE/0600	MILL GAP SPIKE/1800	
WFM - T1 - WHISKEYTOWN O-163	08/15	JOE MILLIGAN	7	MILL GAP SPIKE/0600	MILL GAP SPIKE/1800	
ENG - S/T - T3 - 4660C (E-239)	08/21	JEREMY OSTER	27	MILL GAP SPIKE/0600	MILL GAP SPIKE/1800	
ENG - T6 - E MISSOULA (E-210)	08/21	TANNER FERGUSON	3	MILL GAP SPIKE/0600	MILL GAP SPIKE/1800	
ENG - T6 - BIG STATE (E-213)	08/21	CHRIS TERRY	3	MILL GAP SPIKE/0600	MILL GAP SPIKE/1800	
ENG - T6 - ALASKA (E-212)	08/21	MIKE CADE	3	MILL GAP SPIKE/0600	MILL GAP SPIKE/1800	
ENG - T3 - SHF 343 E-21 D	08/22	SHAWN ZICKEFFOOSE	5	MILL GAP SPIKE/0600	MILL GAP SPIKE/1800	
WT - T2 - SHF 66 (E-234)	08/21	THADDEUS EASON	2	MILL GAP SPIKE/0600	MILL GAP SPIKE/1800	
WT - S2 - TOBIASSON (E-237)	08/21	JUSTIN RHOADES	1	MILL GAP SPIKE/0600	MILL GAP SPIKE/1800	
WT - S2 - HURLMANN (E-238)	08/21	TYLER MURPHY	1	MILL GAP SPIKE/0600	MILL GAP SPIKE/1800	
WT - S2 - SIERRA WATER SHUTTLE (E-29)	08/14	NATE GOOKIN	1	MILL GAP SPIKE/0600	MILL GAP SPIKE/1800	
DOZ - T2 - M. PETERS (E-126)	08/18	BILL HANAM	2	MILL GAP SPIKE/0600	MILL GAP SPIKE/1800	
FALM - T1 - NORTH ZONE FALLERS (O-284)	08/18	TOM NEALY	2	MILL GAP SPIKE/0600	MILL GAP SPIKE/1800	
TFLD (O-274)	08/22	MICHAEL GAWRONSKI	1	MILL GAP SPIKE/0600	MILL GAP SPIKE/1800	
HEQB (O-278)	08/19	TRUETT CHICO	1	MILL GAP SPIKE/0600	MILL GAP SPIKE/1800	
HEQB (O-281)	08/18	ZACHERY SULLIVAN	1	MILL GAP SPIKE/0600	MILL GAP SPIKE/1800	

3. Division/Group Communication Summary						
Function	Channel	RX Frequency N/W	RX Tone/NAC	TX Frequency N/W	TX Tone/NAC	Mode
COMMAND	3 - NIFC C10	170.4125N		165.9625N	T3-131.8	A
COMMAND	4 - NIFC C11	170.6875N		166.5750N	T3 - 131.8	A
COMMAND	5 - NIFC C28	173.5000N		165.3875N	T3-131.8	A
TACTICAL	11 - VFIRE 26	154.3025N	T6-156.7	154.3025N	T6-156.7	A
AIR TO GROUND	13 - AVG TAC	165.3625N		165.3625N		A
AIR TO GROUND	14 - AVG CMD	169.7250N		169.7250N		A

9. Prepared By (Resource Unit Leader) JEREMY CAMACHO	Approved By (Planning Section Chief) MITCH DIEHL	Date 08/12/2020	Time 2000
---	---	--------------------	--------------

**Division/Group Assignment List (ICS 204 WF)
Controlled Unclassified Information//Basic**

1. Incident Name: RED SALMON COMPLEX		3.		Branch: VII	Division/Group: W	
2. Operational Period: 24 HOUR			Date/Time From: 08/13/2020 0600	Date/Time To: 08/14/2020 0600	FRI	
4. Operations Personnel						
OPERATIONS CHIEF	JACOB A CAGLE	BRANCH DIRECTOR	GARY MONDAY PAUL JOHNSON			
DIVISION/GROUP SUPERVISOR	ROBB BEERY (O-130) LWD 8/15	AIR ATTACK SUPERVISOR				
5. Resources Assigned this Period						
Strike Team / Task Force / Resource Designator	LWD	Leader	Number Persons	Drop Off PT./Time	Pick Up PT./Time	
HEQB(T) (O-280)	08/20	THOMAS KROCK	1	MILL GAP SPIKE/0600	MILL GAP SPIKE/1800	
REMS - RENO 19 - ALS (O-317) BRANCH RESOURCE	08/20	PETER FITCH	4	MILL GAP SPIKE/0600	MILL GAP SPIKE/1800	
EMTF (O-296)	08/19	PATRICK GARCIA	1	MILL GAP SPIKE/0600	MILL GAP SPIKE/1800	
EMPF (O-358)	08/21	JARED DIEM	1	MILL GAP SPIKE/0600	MILL GAP SPIKE/1800	
SOFR (O-303)	08/21	KELLY JENSEN	1	MILL GAP SPIKE/0600	MILL GAP SPIKE/1800	
6. Control Operations/Work Assignments:						
Continue to prep roads and dozer line for firing operations. Secure and mopup Pack Saddle Ridge. Prepare to fire from the 31 road to Mill Creek Gap.						
7. Special Instructions:						
Utilize Mist tactics. All line resources will spike overnight. ID helispots and drop points, get lat-longs and give to DIVS. Backhaul trash and excess Equipment. Please return nets, swivels and ice chests. Utilize READ's for Cultural Resources concerns. Do not post lookouts on any bed rock out cropping without first getting clearance from REAF or READ. Mountain Medics parked at DP 9. **ARCH / REAFs listed in Division U are shared between all divisions within Branch VII.** **ARCHs / REAFs** will check in / out with DIVS when entering and leaving their divisions.**						
RENO REMS Available for Branch VII						
8. Division/Group Communication Summary						
Function	Channel	RX Frequency N/W	RX Tone/NAC	TX Frequency N/W	TX Tone/NAC	Mode
COMMAND	3 - NIFC C10	170.4125N		165.9625N	T3-131.8	A
COMMAND	4 - NIFC C11	170.6875N		166.5750N	T3 - 131.8	A
COMMAND	5 - NIFC C28	173.5000N		165.3875N	T3-131.8	A
TACTICAL	11 - VFIRE 26	154.3025N	T6-156.7	154.3025N	T6-156.7	A
AIR TO GROUND	13 - A/G TAC	165.3625N		165.3625N		A
AIR TO GROUND	14 - A/G CMD	169.7250N		169.7250N		A
9. Prepared By (Resource Unit Leader) JEREMY CAMACHO						
Approved By (Planning Section Chief) MITCH DIEHL			Date	Time		
			08/12/2020	2000		

Division/Group Assignment List (ICS 204 WF)

Controlled Unclassified Information//Basic

1. Incident Name:		RED SALMON COMPLEX		3. Branch:		VII		Division/Group:		Y	
2. Operational Period:		24 HOUR		Date/Time From:		08/13/2020 0600		Date/Time To:		08/14/2020 0600	
4. Operations Chief		JACOB A CAGLE		Branch Director		GARY MONDAY		Division/Group Supervisor		NICK BUNCH	
5. Resources Assigned this Period		AIR ATTACK SUPERVISOR		Operations Personnel		PAUL JOHNSON		Resources Assigned this Period			
8. Division/Group Communication Summary				Function				Channel			
9. Prepared By (Resource Unit Leader)		JEREMY CAMACHO		Approved By (Planning Section Chief)		MITCH DIEHL		Date		08/12/2020	
10. Prepared By (Resource Unit Leader)		JEREMY CAMACHO		Approved By (Planning Section Chief)		MITCH DIEHL		Date		08/12/2020	

**Division/Group Assignment List (ICS 204 WF)
Controlled Unclassified Information//Basic**

1. Incident Name:		3.		Branch:	Division/Group:	
RED SALMON COMPLEX				VII	Y	
2. Operational Period:		24 HOUR				
Date/Time From:	THU	Date/Time To:	FRI			
08/13/2020 0600		08/14/2020 0600				
4. Operations Personnel						
OPERATIONS CHIEF	JACOB A CAGLE	BRANCH DIRECTOR	GARY MONDAY PAUL JOHNSON			
DIVISION/GROUP SUPERVISOR	NICK BUNCH	AIR ATTACK SUPERVISOR				
5. Resources Assigned this Period						
Strike Team / Task Force / Resource Designator	LWD	Leader	Number Persons	Drop Off PT./Time	Pick Up PT./Time	
6. Control Operations/Work Assignments:						
Prep and construct indirect headline for firing. Scout Red Cap Creek						
7. Special Instructions:						
Utilize Mist tactics. All line resources will spike overnight. ID helispots and drop points, get lat-longs and provide to DIVS. Backhaul trash and excess Equipment. Please return nets, swivels and ice chests. Utilize READ's for Cultural Resources concerns. Do not post lookouts on any bed rock out cropping without first getting clearance from REAF or READ.						
ARCH / REAFs listed in Division U are shared between all divisions within Branch VII.						
ARCHS / REAFs will check in / out with DIVS when entering and leaving their divisions. **						
RENO REMS Available for Branch VII						
8. Division/Group Communication Summary						
Function	Channel	RX Frequency N/W	RX Tone/NAC	TX Frequency N/W	TX Tone/NAC	Mode
COMMAND	3 - NIFC C3	170.4125N		165.9625N	T3-131.8	A
COMMAND	4 - NIFC C10	170.6875N		166.5750N	T4 - 136.5	A
COMMAND	5 - NIFC C11	173.5000N		165.3875N	T3-131.8	A
TACTICAL	12 - R5 TAC 6	168.2375N		168.2375N		A
AIR TO GROUND	13 - A/G TAC	165.3625N		165.3625N		A
AIR TO GROUND	14 - A/G CMD	169.7250N		169.7250N		A
9. Prepared By (Resource Unit Leader)		Approved By (Planning Section Chief)		Date	Time	
JEREMY CAMACHO		MITCH DIEHL		08/12/2020	2000	

NIGHT

OPERATIONS

**Division/Group Assignment List (ICS 204 WF)
Controlled Unclassified Information/Basic**

1. Incident Name: RED SALMON COMPLEX		3				
2. Operational Period: 24 HOUR		Branch: NIGHT OPS	Division/Group: NIGHT D			
Date/Time From: 08/13/2020 0600	THU	Date/Time To: 08/14/2020 0600	FRI			
4. Operations Personnel						
OPERATIONS CHIEF	JACOB A CAGLE	BRANCH DIRECTOR	DAVE PEREIRA			
DIVISION/GROUP SUPERVISOR	GRAHAM RICE TOD FLOWERS (T)	AIR ATTACK SUPERVISOR				
5. Resources Assigned this Period						
Strike Team / Task Force / Resource Designator	LWD	Leader	Number Persons	Drop Off PT./Time	Pick Up PT./Time	
CREW - T1 - PLUMAS IHC (C-4)	08/23	MIKE SHERMAN	19	RED SPIKE /1800	RED SPIKE/0600	
W/FM - T2 - SIX RIVERS W/FM 20 (O-210)	08/16	TRISTAN KIEHL	11	RED SPIKE /1800	RED SPIKE/0600	
ENG - T6 - BLM 3241 (E-194)	08/20	GEORGE CHAMBERS	3	RED SPIKE /1800	RED SPIKE/0600	
ENG - T6 - BB BAR 75 (E-49)	08/14	TIM BAILEY	3	RED SPIKE /1800	RED SPIKE/0600	
WT - T2 - SRF 235 (E-53)	08/12	KEVIN COLLINS	2	RED SPIKE /1800	RED SPIKE/0600	
EMPF (O-357)	08/22	PETER LARSEN	1	RED SPIKE /1800	RED SPIKE/0600	
EMTF (O-388)	08/22	NICHOLAS MORTON	1	RED SPIKE /1800	RED SPIKE/0600	
SOFR O-428	08/25	GUY CHAMNESS	1	RED SPIKE /1800	RED SPIKE/0600	
6. Control Operations/Work Assignments:						
Hold and patrol containment lines. Burn as needed when conditions permit.						
7. Special Instructions:						
Utilize MIST tactics. Backhaul trash and excess equipment. Do not post lookouts on any bed rock out cropping without first getting clearance from REAF or READ.						
8. Division/Group Communication Summary						
Function	Channel	RX Frequency N/W	RX Tone/NAC	TX Frequency N/W	TX Tone/NAC	Mode
COMMAND	3 - NIFC C10	170.4125N		165.9625N	T3-131.8	A
COMMAND	4 - NIFC C11	170.6875N		166.5750N	T3 - 131.8	A
COMMAND	5 - NIFC C28	173.5000N		165.3875N	T3-131.8	A
TACTICAL	8 - VTAC 12	154.4525N	T6-156.7	154.4525N	T6-156.7	A
AIR TO GROUND	13 - A/G TAC	165.3625N		165.3625N		A
AIR TO GROUND	14 - A/G	169.7250N		169.7250N		A
9. Prepared By (Resource Unit Leader) JEREMY CAMACHO		Approved By (Planning Section Chief) MITCH DHIEL		Date 08/12/2020	Time 2030	

Division/Group Assignment List (ICS 204 WF)
 Controlled Unclassified Information/Basic

1. Incident Name:

RED SALMON COMPLEX

3.

Branch:

Division/Group:

NIGHT OPS

NIGHT W

2. Operational Period:

Date/Time From: 08/13/2020 0600 THU

Date/Time To: 08/14/2020 0600 FRI

Operations Personnel

OPERATIONS CHIEF JACOB A CAGLE

BRANCH DIRECTOR DAVE PEREIRA

DIVISION/GROUP SUPERVISOR KEITH SMITH (O-397) LWD 8/24

AIR ATTACK SUPERVISOR

Resources Assigned this Period

Strike Team / Task Force / Resource Designator	LWD	Leader	Number Persons	Drop Off PT./Time	Pick Up PT./Time
ENG - T6 - YNP - E891 E-209	08/22	ZAC ALLEN	5	SALMON SPIKE/0600	SALMON SPIKE/1800
ENG - T6 - OR-COC 636 E-211	08/21	CREED PENDELTON	4	SALMON SPIKE/0600	SALMON SPIKE/1800
SOFR O-428	08/25	GUY CHAMNESS	1	SALMON SPIKE/0600	SALMON SPIKE/1800

6. Control Operations/Work Assignments:

Continue to hold Pack Saddle Ridge and prepare to burn North towards 31 Road.
 Construct handline from 32. road to Red Cap Peak.

7. Special Instructions:

Utilize MIST tactics.
 Backhaul trash and excess equipment.
 Do not post lookouts on any bed rock out cropping without first getting clearance from REAF or READ.
 Mountain Medics parked at DP9.

8. Division/Group Communication Summary

Function	Channel	RX Frequency /NW	RX Tone/NAC	TX Frequency /NW	TX Tone/NAC	Mode
COMMAND	3 - NIFC C10	170.4125N		165.9625N	T3-131.8	A
COMMAND	4 - NIFC C11	170.6875N		166.5750N	T3 - 131.8	A
COMMAND	5 - NIFC C28	173.5000N		165.3875N	T3-131.8	A
TACTICAL	11 - V/FIRE 26	154.3025N	T6-156.7	154.3025N	T6-156.7	A
AIR TO GROUND	13 - A/G TAC	165.3625N		165.3625N		A
AIR TO GROUND	14 - A/G CMD	169.7250N		169.7250N		A

9. Prepared By (Resource Unit Leader)

JEREMY CAMACHO

Approved By (Planning Section Chief)

MITCH DHEL

Date 08/12/2020

Time 2030

AIR OPERATIONS SUMMARY
DAY/NIGHT
ICS 220

Prepared By: Galen Young

Prepared Date: 8/12/20

Prepared Time: 1700

1. INCIDENT NAME: Red Salmon Complex	2. OPS PERIOD DATE: 8/13/20	START TIME: 0700	END TIME: 2100	SUNRISE: 0620	SUNSET: 2016
--------------------------------------	-----------------------------	---------------------	-------------------	------------------	-----------------

<p>3. REMARKS (Safety Notes, Hazards, Air Operations Special Equipment, etc.): Track all dipsite locations/number of dips/gallons taken. Track all drop locations/number of drops/gallons dropped. All GPS data to be collected in DEGREES, MINUTES, DECIMAL MINUTES format. AVOID Aerial Application of Retardant/Foam/Agent within 300' of Waterways, Bodies of Water, etc. AERIAL AVOIDANCE ZONE: 1/2 MILE RADIUS INDIAN ROCKS. If Retardant/Foam/Agent is dropped within these areas immediately notify the AOBD and provide the following information: Lat/Long, estimated number of gallons and a map detailing the area. Fly with Transponder 1255. CAUTION POWERLINES and SMOKE. Dip Sites: River Dip, Heliwell, Blacks Lake Dip</p>	<p>4. Helibase Information: Willow Creek Helibase: 40° 57.036 123° 38.164 Weaverville Helibase 40° 44.46 122° 55.21 Scott Valley Helibase 41°33.40 122°51.20</p>	<p>5. TFR's: 0/1313 Latitude: 41°09'54" Longitude: 123°23'30" 10NM Radius Altitude: 12,000' MSL Frequency: 121.1750 http://tfr.faa.gov</p>
--	--	--

6. PERSONNEL	NAME	PHONE #	7. FREQUENCIES			TONE	AM/FM	8. MEDIVAC SHIP INFORMATION	
			RX	TX	TONE			Day:	Night:
AOBD	Galen Young	575-574-8720	AIR TACTICS	169.2000	169.2000		FM	Name:	
ASGS ASGS (T)	Jim Stratton Michael Lewton	760-207-4325 520-604-6287	ROTOR VICTOR	121.1750	121.1750		AM		
Willow Creek Helibase	Lee Stewart HEB Neil Dresser HEB(T)	949-614-6127	SRF RPTR	172.3750	164.1750	(T5) 146.2	FM	H-102 DAY HOIST ON REQUEST KNEELAND	
Weaverville Helibase	Thomas Kennedy HEB	562-619-6492	DECK	163.1000	163.1000		FM	CHP- H-16 REDDING DAY/ HOIST	
Scott Valley Helibase	Natalie Bench HEB Dan Fairchild HEB(T)	530-468-1294	AIR TO GROUND TACTICAL	165.3625	165.3625		FM		
ATGS/HLCO H-507	Eric Haskins	909-659-5233	AIR TO GROUND COMMAND	169.7250	169.7250		FM		
HLCO 7RL	Jerry Messinger	541-306-0907	CMD Link NIFC C-3 Willow	170.4250	168.0750	(T3) 131.8	FM		
			CMD Link NIFC C-11 Fire	170.6875	166.5750	(T3) 131.8	FM		
AA-4CT	Jason Withrow	530-206-6955	CMD Link NIFC C-28 Fire	173.5000	165.3875	(T3) 131.8	FM		
			BRIEFING VICTOR	125.1750	125.1750		AM		
Kneeland CALFIRE Helitack	James Beeson	707-444-2863	CALCORD	156.0750	156.0750	(T6) 156.7	FM		
	huu.kneelandhelitack base@fire.ca.gov		AIR GUARD	168.6250	168.6250	(T1) 110.9	FM		

HELICOPTERS

FAA N#	T	MAKE/ MODEL	BASE	START	AVAIL	REMARKS	FAA N#	T	MAKE/MODEL	BASE	START	AVAIL	REMARKS
1CG	1	S-61	Weaver	0630	0700		H-502	2	Bell 205	Scott Valley	0630	0700	EU
1HT	1	S-64	Weaver	0730	0800		H-69H	2	Bell 205	Willow	0700	0730	EU RAPPELL
1AJ	1	Chinook	Weaver	0730	0800		H-516	2	Bell 212HP	Willow	0800	0830	EU
0CD	1	UH-60	Scott Valley	0800	0830		H-517	2	Bell 205	Weaver	0630	0700	EU
1048Y	1	S-61	Scott Valley	0800	0830		H-503	3	Bell 407	Willow	0800	0830	EU
HT-917	1	S-61	Willow	0800	0830		H-7RL	3	Bell 407	Weaver	0630	0700	HLCO Only
							H-507		Cobra	Scott Valley	0730	0800	ATGS
							H-9PJ	3	Bell 407	Weaver	0730	0800	Short Haul / BLS

UAS / FIXED WING

4CT		Aero Commander 500-S	RDD	0800	0830	ATGS							
UR31	3	M-600	Willow	0800	0830	PSD/ IR	UR320	3	M-600	Weaver	0800	0830	PSD/ IR
UR41	4	Mavic	Willow	0800	0830	PSD/ IR	UR417	4	Mavic	Willow	0800	0830	PSD/ IR

Missions:	Aircraft	AVAIL	Departure Point	Destination	
ATGS/HLCO	507,509 4CT,7RL	0700	Weaver, Willow, Scott Valley, RDD	Fire	Provide Tactical Aerial Support
Bucket Support	ALL	0700	Willow, Scott Valley, Weaverville	Fire	Water dropping requested by Ops, Branch, Division or Air Attack
RECON	T-3	0800	Willow	Fire	As requested. Coordinate requests with AOBD.
Retardant	TBD	TBD	TBD	TBD	On request: Check application avoidance areas READ approval required.
MEDIVAC	9PJ	0800	Willow	As requested	Request through Red Salmon Communications on Command Repeater. Give location: lat/long if known, and current visibility. Check Medical Plan/IAP.
Repeater	T2, T-3	0800	Willow	As requested	
Rapellers	T2	0800	Willow	TBD	As requested.
Initial Attack	TBD	0800	Willow	TBD	Provide IA Helitack and loan copters on request.
PSD	T-3		Willow	Fire	When available as requested through Ops

Red Salmon Complex – Safety Message

INCIDENT #CA-SRF-000656

DATE: 08-13/14-2020 TIME: 0600-0600 Day/Night Shift

Incident Management Team Transition

- Sometimes called the 19th Watch Out Situation
- Take the time to understand the plan. Ensure all resources completely understand the assignment, the Communications Plan, and the Medical Plan.
- Supervisory positions have changed. Know who you are working for.
- Briefings: Required every shift, for all personnel, for new assignments, and for changing conditions.

Any Firefighter knows how

Every firefighter should know why

Make a Safety Difference

- As a supervisor, provide constant and relentless oversight.
- **Stay focused on the task at hand, all the time!**
- Come up with a safer way to perform a risky assignment.
- Discuss situations that may cause a near miss.
- Never tolerate “Hey, watch this!”
- Discuss the effects of fatigue and how to mitigate the effects of fatigue.
- While in the fire zone, wear your hardhat when you leave the vehicle.
- Have a purpose in what you do.

Covid-19

- Be Smart! Stay Apart! Maintain at least 6 feet distance from people when feasible
- Practice good hygiene. Wash hands often and avoid touching your face
- Cover your nose and mouth with a facial covering and cough into your elbow if needed
- Monitor your health. If you have fever, shortness of breath, coughing, sneezing or any other Covid-19 related symptom, tell a supervisor and maintain social distancing

Prepared by:

CIIMT 4
Safety Group



INCIDENT RISK ANALYSIS RED SALMON COMPLEX CA-SRF-000656 (ICS 215a) Day/Night Shift

DIV/BR	HAZARDOUS ACTIONS / CONDITIONS	MITIGATIONS / WARNINGS / REMEDIES
ALL	TRAFFIC HAZARDS AND DRIVING	<ul style="list-style-type: none"> • Many roads are narrow and mid-slope, with soft shoulders. Allow heavy vehicles to pass on uphill side. Use spotters when backing, or turning around. • Practice "Defensive Driving" techniques. Assume other drivers are fatigued and complacent. • Simple speed limit in and around ICP, keep your speed down in all areas. • Use warning lights when working on roads or traveling in smoke. • Drive at or below posted speed limits. • Use chock blocks, turn wheels into hill. • Be alert for wildlife.
ALL	HAZARD / DANGER TREES	<ul style="list-style-type: none"> • Follow Hazard Tree Safety Guidelines (IRPG p.22.) • Limit number of personnel around snags and their exposure time; fallers must be qualified for the trees being felled. • Be alert around hazard trees during wind events, even green trees. • The hazard zone extends a minimum of 2½ tree lengths. • Do not park vehicles or take breaks under or near hazard trees.
ALL	STEEP TERRAIN AND ROLLING DEBRIS	<ul style="list-style-type: none"> • Maintain 8'-10' spacing when working & walking. • Be alert for rolling rocks, debris, or burning material. • Evaluate necessity to send personnel in areas with limited access. • Post lookouts where feasible.
ALL	FATIGUE/COMPLACENCY	<ul style="list-style-type: none"> • Be alert for signs of fatigue and take breaks as necessary. • Maintain 2:1 work/rest ratio. • Monitor ALL resources for level of fatigue. • Repeated assignments in the same area can lead to complacency making personnel more vulnerable to accidents. • Take steps to maintain situational awareness for the duration of the incident.
ALL	FIRING OPERATIONS and DEVICES	<ul style="list-style-type: none"> • Follow the chain of command when undertaking burning operations. • Ensure that aerial/ground ignition plans have been well briefed including LCES and drought related fire behavior considerations. • Wear and use appropriate PPE. • Initiate burning after ensuring the plan is authorized and understood by all.
ALL	HEAVY EQUIPMENT OPERATIONS	<ul style="list-style-type: none"> • Ensure communications are established with operators. • Avoid working downslope from heavy equipment. • Maintain a 50'-150' exclusion area around equipment. • In timber increase safety distance to 2 ½ times canopy height.
ALL	COMMUNICATIONS	<ul style="list-style-type: none"> • Share your Situational Awareness(hazards, changes, etc) to those who also have a need • Radio communications may be poor in some areas. • Ensure all personnel are familiar with the incident communications plan.
ALL	NIGHT OPERATIONS	<ul style="list-style-type: none"> • Have a purpose for where you drive and what you do. Don't rush into assignments. • Use caution where you park or stage, especially in steep timbered areas. • Use available time for briefings on roads, terrain, and potential rolling material, especially if the resources are new to the area. • Increase SA by trying to see the work area during daylight hours. • Use glow sticks to mark hazards, and ensure personnel have headlamps.
ALL	AIR OPERATIONS	<ul style="list-style-type: none"> • Follow "Aviation Watch-Out Situations" on page 46, IRPG. • Don't plan on air resources for tactical support or medical transportation. • Refer to page 58, IRPG for directing bucket drops. • Ensure positive communication with all air resources.
ALL	HEAT RELATED ILLNESS	<ul style="list-style-type: none"> • Drink 2 to 1 water to sports drinks. • Take frequent breaks, minimum of 10 minutes every hour. • Recognize symptoms of HEAT RELATED ILLNESS which include low energy, headaches, dizziness, poor rest, poor eating habits, hot skin, and lack of sweating.
ALL	COVID-19	<ul style="list-style-type: none"> • Utilize social distancing, wear facemasks in camp ALWAYS. • Maintain the "module of one" concept. • Disinfect vehicles, tools, and commonly touch surfaces frequently. • Do not share equipment and wash hands frequently.

INCIDENT NAME:

Red Salmon Complex

Operational Period: 0600-0600

August 13-14, 2020

DATE AND TIME PREPARED:

August 12, 2020 1600 Hours



1. Incident Name **Red Salmon Complex** 2. Operational Period **08/13-08/14 (0600-0600)**
 Date/Time:




3. EMS / Ambulance Services/Aid Stations/REMS	Name	Location	Frequency/Phone	Advanced Life Support (ALS) Yes No
Mountain Medics Medical Supply Trailer	Orleans Camp	Walk-up Medical Supplies and Treatment	RN	
Mountain Medics #1 4x4 ALS Ambulance (24 hours)	Mill Gap Spike/DP #9	Command	X	
Mountain Medics #4 4x4 ALS Ambulance (24 hours)	Salmon Spike	Command	X	
Mountain Medics #5 4x4 ALS Ambulance	Red Spike	Command	X	
Hoopra Ground Ambulance	Willow Creek, CA	CAL Fire Fortuna ECC	X	
Rapid Extraction Module Support (REMS)	Rama 6 - Branch I Fairfield REMS - Branch V Rama 19 - Branch VII	Command	X	

4. Air Rescue / Air Ambulance Services	Name	Location	Type of Aircraft & Capability
H-9PJ	Weaverville Helibase	Order via command Short Haul, BLS (ETA 20 min)	
Resch 6	Redding	Order via CAL Fire Fortuna ECC, ALS Day & Night (ETA 30 min)	
Cal Fire H102	Kneeland	Order via CAL Fire Fortuna ECC, BLS Day only (ETA 40 min)	
CHP H14H16	Redding	Order via CAL Fire Fortuna ECC, Hoist Day (ETA 30 min)	
Coast Guard	Eureka	Order via CAL Fire Fortuna ECC, BLS, Hoist, Short Haul, Night Vision (ETA 30 min)	

5. Hospitals (all times estimated from incident location)	Name & Level	GPS Datum - WGS 84 Degrees Decimal Minutes	Travel Time (from Orleans) Air Gnd	Phone	Helipad Yes No	Address
St. Joseph's Hospital (Level 3)	Lat: N 40° 47.0333' Long: W 124° 08.800'	30 MINS 2 HRS	707-269-3605 ext 2000	X	2700 Dolbeer St Eureka, CA	
Fairchild Medical Center (Level 4)	Lat: N 41° 43.14' Long: W 122° 38.74'	30 MINS 2.5 HRS	530-941-6292	X	444 Bruce Street Yreka, CA	
Mad River Cmty. Hospital (Level 4)	Lat: N 40° 53.72 Long: W 124° 05.45	20 MINS 1.75 HRS	707-826-8284 EXT 1	X	3800 James Rd. Arcata, CA	
Mercy Medical Center (Level II)	Lat: N 40° 34.33 Long: W 122° 23.80	30 MINS 3 HRS	530-226-7200	X	2176 Rosaline Ave. Redding CA	
U.C. Davis Medical Center Level 1 Trauma/Burn	Lat: N 38° 33.32 Long: W 121° 27.35	2 HRS 5.5 HRS	916-703-6576	X	2315 Stockton Blvd. Sacramento, CA.	

6. Division / Crew Emergency Pre-Plan *Update and discuss with assigned resources daily.*
 Fireline EMT / Medic's
 Division / Branch Location

Air Hoist site location site:
 Lat: / Long: / Elevation:
 Helispot:
 Lat: / Long: / Elevation:
 MED LZ:

7. Prepared By (Medical Unit Leader)	8. Date/Time	9. Reviewed By (Safety Officer)	10. Date/Time
MEDL Doug Stuart 	8/12/2020 1800	SOF1 	8/12/2020 1800
MEDL(9) Mike Harris 			

FOR A NON-EMERGENCY INCIDENT, WORK THROUGH CHAIN OF COMMAND TO REPORT AND TRANSPORT INJURED PERSONNEL AS NECESSARY.

FOR A MEDICAL EMERGENCY: IDENTIFY ON SCENE INCIDENT COMMANDER BY NAME AND POSITION AND ANNOUNCE "MEDICAL EMERGENCY" TO INITIATE RESPONSE FROM INT COMMUNICATIONS/DISPATCH.

Use the following items to communicate situation to communications/dispatch.

1. CONTACT COMMUNICATIONS / DISPATCH (Verify correct frequency prior to starting report)

Ex: "Communications, Div. Alpha, Stand-by for Emergency Traffic."

2. INCIDENT STATUS: Provide incident summary (including number of patients) and command structure.

Ex: "Communications, I have a Red priority patient, unconscious, struck by a falling tree. Requesting air ambulance to Forest Road 1 at (Lat/Long). This will be the Trout Meadow Medical, IC is TFLD Jones, EMT Smith is providing medical care."

Severity of Emergency / Transport Priority

- RED / PRIORITY 1 Life or limb threatening injury or illness. Evacuation ~~is~~ is IMMEDIATE**
Ex: Unconscious, difficulty breathing, bleeding severely, 2^o - 3^o burns more than 4 palm sizes, heat stroke, disoriented.
- YELLOW / PRIORITY 2 Serious injury or illness. Evacuation may be DELAYED if necessary.**
Ex: Significant trauma, unable to walk, 2^o - 3^o burns not more than 1-3 palm sizes.
- GREEN / PRIORITY 3 Minor injury or illness. Non-Emergency transport**
Ex: Sprains, strains, minor heat-related illness.

Nature of Injury or Illness & Mechanism of Injury

Brief Summary of Injury or Illness
(Ex: Unconscious, Struck by Falling Tree)

Transport Request

Air Ambulance / Short Haul/Hoist
Ground Ambulance / Other
Descriptive Location & Lat / Long.
(WGS84)

Patient Location

Incident Name

Geographic Name + "Medical"
(Ex: Trout Meadow Medical)
Name of on-scene IC of incident within an incident (Ex: TFLD Jones)
Name of Care Provider
(Ex: EMT Smith)

On-Scene Incident Commander

Patient Care

3. INITIAL PATIENT ASSESSMENT: Complete this section for each patient as applicable (start with the most severe patient)

Patient Assessment: See IPPG PAGE 106

Treatment:

4. TRANSPORT PLAN:

Evacuation Location (if different): (Descriptive Location (drop point, intersection, etc.) or Lat / Long.) Patient's ETA to Evacuation Location:

Helispot / Extraction Site Size and Hazards:

5. ADDITIONAL RESOURCES / EQUIPMENT NEEDS:

Example: Paramedic/EMT, Crews, Immobilization Devices, AED, Oxygen, Trauma Bag, IV/Fluid(s), Splints, Rope rescue, Wheeled litter, HAZMAT, Extraction

6. COMMUNICATIONAL Identity state Air/Ground EMS Frequencies and Hospital Contacts as applicable

Function	Channel Name/Number	Receive (RX)	Tone/NAC *	Transmit (TX)	Tone/NAC *
COMMAND					
AIR-TO-GRND					
TACTICAL					

7. CONTOINGENCY:

Considerations: If primary options fail, what actions can be implemented in conjunction with primary evacuation method? Be thinking ahead.

8. ADDITIONAL INFORMATION: Updates/Changes, etc.

REMEMBER: Confirm ETA's of resources ordered. Act according to your level of training. Be Alert. Keep Calm. Think Clearly. Act Decisively.

Follow up with MEDL upon return to ICP



INCIDENT RADIO COMMUNICATIONS PLAN (ICS 205)

Controlled Unclassified Information//Basic

**RED SALMON COMPLEX
BRANCH I/BRANCH VII NORTH**

Date: 08/12/2020
Time: 2000

Date/Time From:
08/13/2020 0600 THU

Date/Time To:
08/14/2020 0600 FRI

4. Basic Radio Channel Use:

Zone Group	Ch #	Function	Channel Name/Trunked Radio System Talkgroup	Assignment	RX Freq	RX Tone/NAC	TX Freq	TX Tone/NAC	Mode (A,D, or M)	Remarks
15	1	COMMAND	SRF - 2	ALL DIVS	172.3750N		164.1750N	T5,T13	A	TONE 5 ORLEANS 146.2, T13 HORSE 141.3
15	2	COMMAND	NIFC C3	ICP, BR VI	170.4250N		168.0750N	T3-131.8	A	BRUSH MOUNTAIN LOOKOUT - TONE 3
15	3	COMMAND	NIFC C10	ALL DIVS	170.4125N		165.9625N	T3-131.8	A	SHELTON BUTTE - TONE 3
15	4	COMMAND	NIFC C11	ALL DIVS	170.6875N		166.5750N	T3-131.8	A	ORLEANS LOOKOUT - TONE 3
15	5	COMMAND	NIFC C28	ALL DIVS	173.5000N		165.3875N	T3-131.8	A	PACK SADDLE RIDGE - TONE 3
15	6	TACTICAL	NIFC TAC 2	FOR IA WITHIN TFR	168.2000N		168.2000N		A	NIFC TAC 2
15	7	TACTICAL	VTAC 11	DIV A	151.1375N	T6-156.7	151.1375N	T6-156.7	A	VTAC 11
15	8	TACTICAL	VTAC 12	DIV D	154.4525N	T6-156.7	154.4525N	T6-156.7	A	VTAC 12
15	9	TACTICAL	VTAC 13	DIV K	158.7375N	T6-156.7	158.7375N	T6-156.7	A	VTAC 13
15	10	TACTICAL	VFIRE 25	RED CONTINGENCY	154.2875N	T6-156.7	154.2875N	T6-156.7	A	VFIRE 25
15	11	TACTICAL	VFIRE 26	DIV W	154.3025N	T6-156.7	154.3025N	T6-156.7	A	VFIRE 26
15	12	TACTICAL	R5 TAC 6	DIVS R, U, Y	168.2375N		168.2375N		A	R5 TAC 6
15	13	AIR TO GROUND	A/G TAC	ALL DIVS	165.3625N		165.3625N		A	AIR/GROUND TACTICAL
15	14	AIR TO GROUND	A/G COMMAND	ALL DIVS	169.7250N		169.7250N		A	AIR/GROUND COMMAND
15	15	TACTICAL	CALCORD	ALL DIVS	156.0750N	T6-156.7	156.0750N	T6-156.7	A	MEDEVAC COORDINATION - TONE 6
15	16	AIR GUARD	AIR GUARD	ALL DIVS	168.6250N		168.6250N	T1-110.9	A	TONE ON TRANSMIT ONLY - URGENT AIRCRAFT CONTACT

5. Special Instructions:

6. Prepared By (Communications Unit Leader)

Name: SAL BONILLA, COML 530-629-1654

Signature: *[Handwritten Signature]* ComL #4

ICS 205

IAP Page

Date/Time: 08/12/2020 2000

INCIDENT RADIO COMMUNICATIONS PLAN (ICS 205)

Controlled Unclassified Information//Basic

RED SALMON COMPLEX BRANCH V/BRANCH VII SOUTH	Date: 08/12/2020 Time: 2000	Date/Time From: 08/13/2020 0600 THU	Date/Time To: 08/14/2020 0600 FRI
---	--------------------------------	-------------------------------------	-----------------------------------

4. Basic Radio Channel Use:

Zone Group	Ch #	Function	Channel Name/Trunked Radio System Talkgroup	Assignment	RX Freq	RX Tone/NAC	TX Freq	TX Tone/NAC	Mode (A,D, or M)	Remarks
15	1	COMMAND	SRF - 2	ALL DIVS	172.3750N		164.1750N	T5,T13	A	TONE 5 ORLEANS 146.2, T13 HORSE 141.3
15	2	COMMAND	NIFC C3	ICP	170.4250N		168.0750N	T3-131.8	A	BRUSH MOUNTAIN LOOKOUT - TONE 3
15	3	COMMAND	NIFC C10	ALL DIVS	170.4125N		165.9625N	T3-131.8	A	SHELTON BUTTE - TONE 3
15	4	COMMAND	NIFC C11	ALL DIVS	170.6875N		166.5750N	T3-131.8	A	ORLEANS LOOKOUT - TONE 3
15	5	COMMAND	NIFC C28	ALL DIVS	173.5000N		165.3875N	T3-131.8	A	PACK SADDLE RIDGE - TONE 3
15	6	TACTICAL	NIFC TAC 2	FOR IA WITHIN TFR	168.2000N		168.2000N		A	NIFC TAC 2
15	7	TACTICAL	NIFC TAC 3	DIV M/N/O	168.6000N		168.6000N		A	NIFC TAC 3
15	8	TACTICAL	NIFC TAC 5	DIV M/N/O	166.7250N		166.7250N		A	NIFC TAC 5
15	9	TACTICAL	NIFC TAC 6	AVAILABLE	166.7750N		166.7750N		A	NIFC TAC 6
15	10	TACTICAL	NIFC TAC 7	DIV P	168.2500N		168.2500N		A	NIFC TAC 7
15	11	TACTICAL	R5 TAC 4	SALMON CONT	166.5500N		166.5500N		A	R5 TAC 4
15	12	TACTICAL	R5 TAC 5	TRINITY CONT	167.1125N		167.1125N		A	R5 TAC 5
15	13	AIR TO GROUND	A/G TAC	ALL DIVS	165.3625N		165.3625N		A	AIR/GROUND TACTICAL
15	14	AIR TO GROUND	A/G COMMAND	ALL DIVS	169.7250N		169.7250N		A	AIR/GROUND COMMAND
15	15	TACTICAL	CALCORD	ALL DIVS	158.0750N	T6-156.7	156.0750N	T6-156.7	A	MEDEVAC COORDINATION - TONE 6
15	16	AIR GUARD	AIR GUARD	ALL DIVS	168.6250N		168.6250N	T1-110.9	A	TONE ON TRANSMIT ONLY - URGENT AIRCRAFT CONTACT

5. Special Instructions:

6. Prepared By (Communications Unit Leader)	Name: SAL BONILLA, COML 530-629-1654	Signature: <i>Sal Bonilla Coml #4</i>
ICS 205	IAP Page	Date/Time: 08/12/2020 2000

FINANCE MESSAGE

Thank you for continuing to submit your times in the safest way possible. The options for submitting your CTR's and Shift Tickets are:

- Electronic fillable PDF CTR/Shift Tickets. QR codes to the fillable forms are included below. If you do not have QR capabilities Finance can e-mail you the forms directly. Make sure the forms are signed by the supervisor before submitting to Finance. (In order to use fillable forms you must have some version of Adobe Acrobat downloaded on your device.)
- Hard Copy CTR/Shift Ticket. You may fill out a hard copy CTR/SHIFT Ticket, snap a picture and email/text that in to Finance OR you may turn in your actual hard copy as usual. If you send in a picture please make sure it is legible and includes the supervisor's signature at the bottom. (If you are texting pictures to Finance, enter the email address shown below where you would normally enter a phone number).

PLEASE:

- Crews need to include a manifest with their first CTR.
- Try to submit your times at least every other day. There is a drop box at Orleans Base Camp in the check-in tent to drop off your time.
- Write your email or text # on your CTR.
- Hazard pay justifications are required on your CTR's. "H=Hazard" is not sufficient.

WHEN YOU ARE CLOSE TO DEMOB:

- Follow the demob plan instructions based on your travel route home. This will determine whether your demob will be in-person or remote.
- Submit all time documentation (including travel home) ahead of demob.
- Send only one representative per resource to the Finance trailers.
- Abide by scheduled demob time or call Finance for an unscheduled demob.



CTR



SHIFT TICKET

2020.RedSalmon.finance@firenet.gov

Personnel Time Office (530) 629-1675

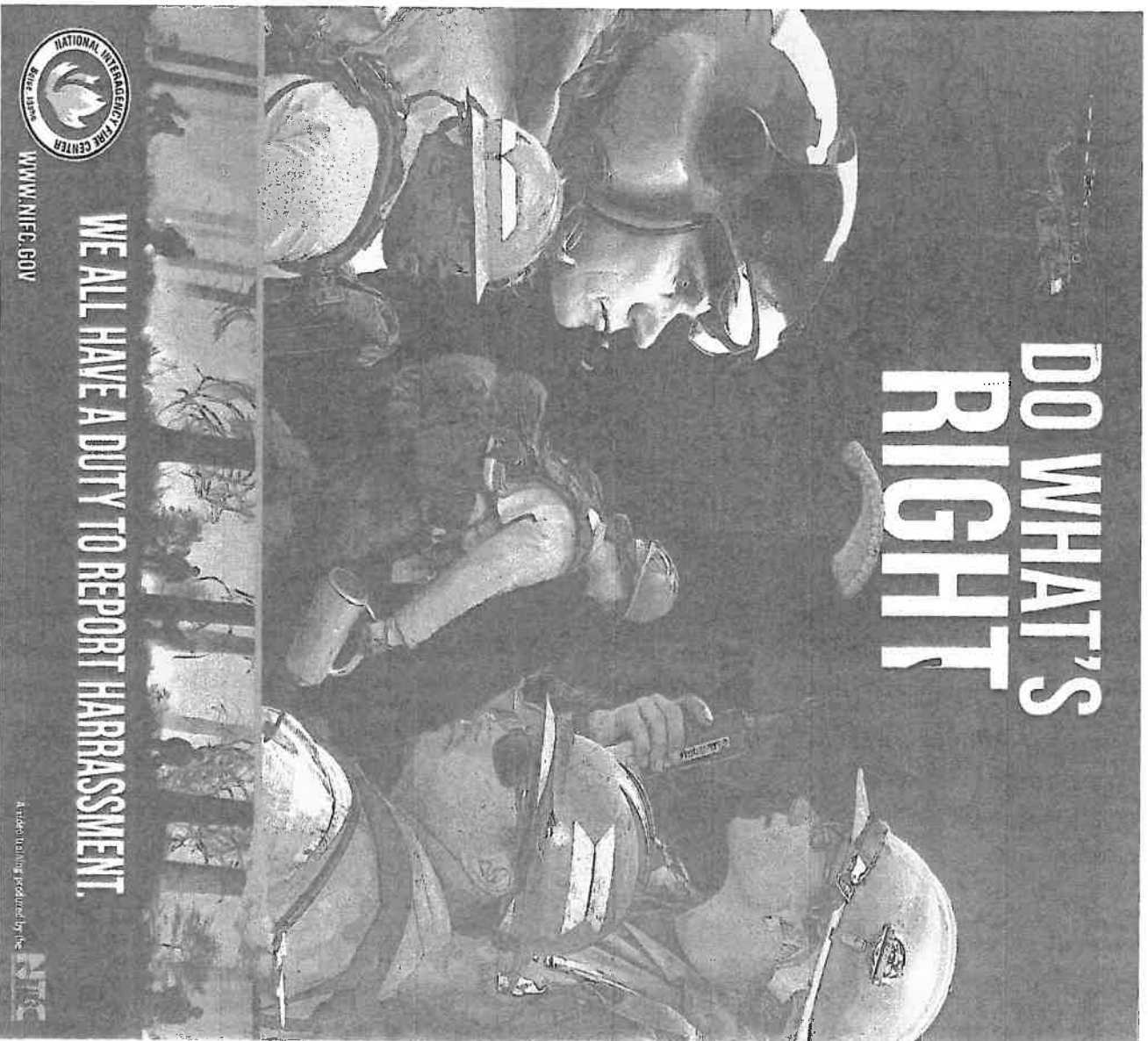
Comp/Claims (707) 382-2147

Equipment Time Office (530) 629-1678

Finance Section Chief (530) 629-1677

HUMAN RESOURCE MESSAGE

August 13, 2020



Harassing conduct, no matter who it's directed at will not be tolerated on this or any or any fire incident. We all have a duty to report Harassment. If you see something - say something..

Feel free to call/text or come by the HRSP trailer if you have questions, concerns, or just want to chat. ~ **HRSP: Adam Alvarez – (707) 373-8715**

Training Message



RED SALMON
COMPLEX

AUGUST 13, 2020

Please sign in your trainees to get proper
documentation

NEW TRAINEES USE THE CODE BELOW TO GET
CHECKED INTO THE TRAINING DATABASE.

PLEASE LET US KNOW A FEW DAYS IN ADVANCE
BEFORE YOU ARE READY TO LEAVE THE INCIDENT
SO WE CAN SEND YOU THE PROPER FORMS
ELECTRONICALLY.

IF YOU HAVE ANY QUESTIONS PLEASE CONTACT ME.

THANK YOU,

NICK BALENT

TNSP (1)

707.298.1805

nicholas.balent@usda.gov



Trainee check in form

08/13/2020

TENTATIVE RELEASE

RED SALMON COMPLEX US-CA-SRF-000656

OVERHEAD

O-194	0600	(ABRO)	SMISCHNY, JEFFREY WHEELER
O-21	0600	(MEDL)	THOMAS, CLAYTON
O-33	0600	(EMTB)	WILLIAMS, EMILY SHARON
O-282	0800	(OPBD)	BURNS, STEVE
O-352	0800	(SEC2)	PRATHER, JOSHUA LOUIS
O-40	1800	(BCMG)	BOYD, THOMAS G
O-24	1800	(EMTP)	CHRISTY, JULIAN
O-26	1800	(EMPF)	GOETTLE, ANDREW
O-77	2000	(PIO2)	MOORE, SANDRA J

08/14/2020

TENTATIVE RELEASE

RED SALMON COMPLEX US-CA-SRF-000656

CREWS

C-7	0800	(HC1)	CREW - T1 - MAD RIVER IHC
C-23	0800	(HC2)	CREW - T2 - FRANCO 17065
C-24	0800	(HC2)	CREW - T2 - FRANCO 17075
C-26	0800	(HC2)	CREW - T2 - FRANCO 17076

EQUIPMENT

E-46	0800	(ENG6)	ENG - T6 - GRAYBACK 35
------	------	--------	------------------------

OVERHEAD

O-29	0600	(EMTB)	CHIODINI, MICHAEL
O-326	0600	(MEDL)	DELGADO, JUAN JOSE
O-75	0700	(GISS)	LOWREY, MARK
O-100	0800	(FAL1)	FALM - T1 - NORTH ZONE
O-102	0800	(FAL1)	FALM - T1 - REDWOOD EMPIRE
O-101	0800	(FAL1)	FALM - T1 - PACIFIC RIDGELINE
O-219	0800	(ARCH)	HERTFELDER, PAULA JANE
O-66	0800	(TFLD)	LEE, AMOS
O-138	0800	(ARCH)	PADIAN, MICHAEL
O-42	0800	(SEC2)	WAUPOOSE, DAVID L

SPIKE CAMP MEDICAL SUPPLY ORDER FORM

Date & Time		Order # (DIVS + #)	MODE OF DELIVERY		Location of Delivery
Order was placed			GROUND SUPPORT		Div, DP, LZ Lat Long
Current Date and Time:			PICK UP IN SUPPLY		
DATE NEEDED:			HELO		
TIME NEEDED:					
Order received in COMMUNICATIONS by:		Name:	Time:		
Order received in SUPPLY by:		Name:	Time:		
Order shipped by Transportation or PU in Supply Name:					
PLEASE ORDER BY ITEM NUMBER ----- AMOUNT QUANTITIES: TOTAL, BOX, CASE					
#	Item	Amount	#	Item	Amount
BANDAGES					
1	1" Plastic Band Aid		26	Gold Bond Blue	
2	2"x3" Band Aid		27	Athletes Foot Powder	
3	Knuckle Band Aid		28	Mole Skin	
4	Steri Strip		29	2nd Skin	
5	Ace Bandage		GI / STOMACH		
6	Coban Sports Wrap		30	Tums	
7	2" Medical Tape		31	Peppid AC	
8	4" x 4" Bandage		32	Pepto Bismo	
9	AAA Ointment		33	Laxative	
10	Alcohol Prep		34	Immodium	
BUGS / INSECTS					
11	Bug Spray		35	Ibuprofen	
12	Bug Wipes		36	Tylenol	
13	Sting Swabs		37	Asprin	
COUGH / COLD / ALLERGY					
14	Cough Drops		38	Abreva	
15	Sinus Decongestant		39	Ora Gel	
16	Nyquil + Dayquil		SKIN		
17	Claritin		40	Sunscreen	
18	Sudafed		41	Hydrocortadazone Cream	
EARS / EYES / NOSE					
19	Q-Tips		42	Gold Bond Yellow	
20	Eye Drops		43	Chap Stick	
21	Eye Wash		44	Tech Nu	
22	Contact Solution		45	Hand Sanitizer	
23	Nasal Saline		46	A & D Ointment	
FEMALE					
24	Tampons		47	Body Glide	
25	Pamprin		48	Bio Freeze	
			49	Baby Wipes	
			50	Ice Pack	
SPECIAL NOTES					

Red Salmon Complex

Phone List

Check In/Demob	1-530-629-1679
Communications	1-530-629-1654
Comm Techs	1-530-629-1648
Comp Claims	1-707-382-2147
Equipment Time	1-530-629-1678
Finance	1-530-629-1677
Incident Commander	1-530-629-1644
Incident Meteorologist	1-240-778-5287
Medical Orleans Camp	1-530-906-6964
Medical Willow Creek Camp	1-530-629-1647
Operations	1-530-629-1664
Ordering	1-530-629-1674
PIO	1-530-629-1661
Plans	1-530-629-1668
Safety Orleans Jeff Hammes (cell #)	1-208-313-7770
Safety Willow Creek	1-530-629-1663
Security	1-323-842-3046
Training	1-209-471-7229

08/07/20

RED SALMON DEMOB PROCESS

Demob Process

Steps for the Demob Process. Note this is a paperless process. If you have difficulties with your phone or need help, please ask the person in the Check-in / Demob tent or call 530-629-1679. This includes those who do not have a smartphone.



Go to the following locations where the Unit Leader will electronically sign off on your demob:

- ORLEANS GROUND SUPPORT ***(Do this prior to Weed Wash)***
- WEED WASH
- SUPPLY
- COMMUNICATIONS
- TIME (LAST)

Contact Finance at the listed numbers to ensure all shift tickets and CTR's are completed:
Equipment Time (530) 629-1678, Personnel Time (530) 629-1675

RESOURCES TRAVELING THROUGH YREKA TO HIGHWAY 5
FOR TIME AND DEMOB - NO NEED TO COME TO WILLOW CREEK ICP

* EQUIPMENT TIME*
Finance will generate the Emergency Equipment - Use Invoice (OF-286) and e-mail OF-286 to company owner for review and signature.

* PERSONNEL TIME*
Finance will generate the Incident Time Report(s) (OF-288) and e-mail OF-288 to designated contact for review.

When finished with the items above, return to the Check-in / Demob tent to verify no other information is needed.

Travel Itinerary for
After Demob Process



Last, use the QR Code to complete the "Travel Itinerary for After Demob Process", QR Code Form, OR STOP at the Demob / Check-in tent to verbally report your travel itinerary.

RESOURCES TRAVELING SOUTH THROUGH WILLOW CREEK

After all of the above stops, EXCEPT for TIME and DEMOB, have been completed. Travel to Willow Creek ICP.

TIME - Overhead, or ONE PERSON from each Vendor or Crew will be requested to visit Finance (Equipment Time or Personnel Time) for payment processing.

DEMOB (LAST) - STOP AT THE DEMOB TRAILER to use the QR Code to complete the "Travel Itinerary for After Demob Process", QR Code Form, OR to verbally report your travel itinerary.



Local Government Resources on CFAA

If you are demobing from an incident and there is no OES AREP on site

F-42 thru the Incident Finance Section Chief or the Incident Commander
One of them must sign your 42's

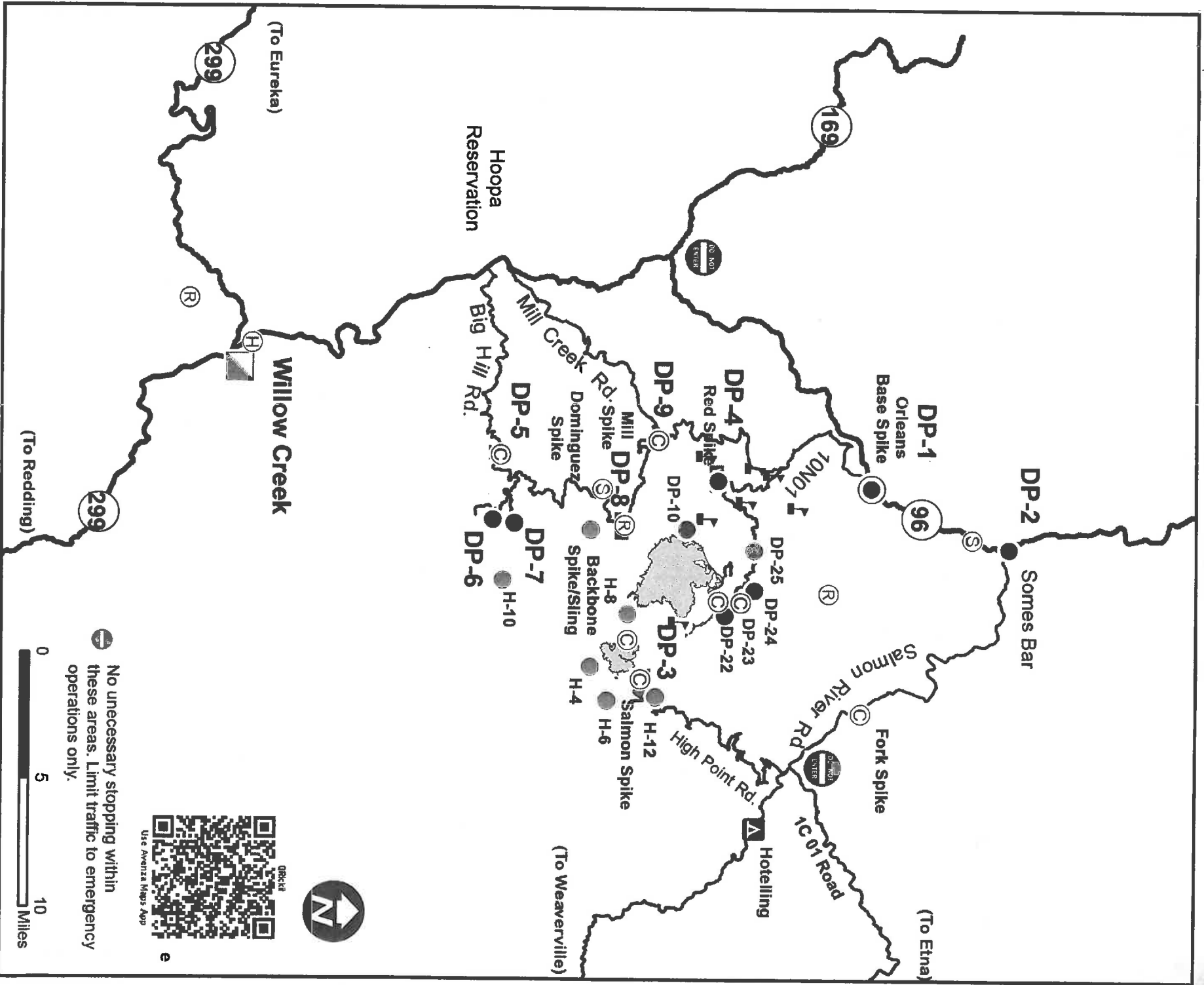
The Incident keeps the Pink copy and you keep the Golden.
The Original and Green you mail to OES Headquarters as per the
instructions on the front of your F-42

OES JOB AIDS, FORMS, F-42 SAMPLES AND CFAA AGREEMENT



Questions?

OES Assistant Chief Pat Titus
916-634-9225



Transportation Map

Red Salmon Complex

CA-SRF-0656

08/08/20

Legend

-  ICP
-  Camp
-  Repeater
-  Helispot
-  Fire Perimeter
-  Drop Point
-  Staging Area
-  Helibase

 No unnecessary stopping within these areas. Limit traffic to emergency operations only.



Red Salmon Complex COVID-19 Mitigations

It is the expectation that all incident personnel will follow the CDC and Agency guidance related to COVID-19.



- **Maintain physical distance of 6'+.** There is currently no vaccine to prevent the novel coronavirus (COVID-19).
- **The best way to prevent illness is to avoid being exposed to this virus.**
- The virus is thought to spread mainly from person-to-person.
 - Between people who are in close contact with one another (within about 6 feet).
 - Through respiratory droplets produced from an infected person.



- **Wash your hands** often with soap and water for at least 20 seconds, especially after blowing your nose, coughing, or sneezing.
- If soap and water are not readily available, **use a hand sanitizer that contains at least 60% alcohol.** Cover all surfaces of your hands and rub them together until they feel dry.
- **Avoid touching your eyes, nose, and mouth** with unwashed hands.



- **Wear a face covering.** Outside of fireline activity, it is expected that all incident personnel will wear a face covering when social distancing is not possible with those outside your “module as one”. Face coverings are to be worn, in the appropriate manner, within the ICP, Base, and Spike Camps.

To protect the local communities along Highway 96, under no circumstances will you make any stops. Be prepared to travel non-stop in the areas from Willow Creek to Happy Camp. Expect to see hard closures.

- ***Conduct personnel health screenings daily and report illnesses to supervisor. COVID-19 symptoms include cough, shortness of breath, trouble breathing or any two of fever, chills, repeated shaking with chills, muscle or body aches, headache, sore throat, new loss of taste or smell, congestion or runny nose, nausea or vomiting, or diarrhea.***

FIRE REPLACEMENT PROCEDURES

START THIS PROCESS AT LEAST 48 HOURS PRIOR TO DEMOB

Submit requests for all incident replacements on a 213, General Message:

- Separate cache from non-cache items on separate 213's!
- Include explanation for lost or damaged items.
- Include DIVS signature on the 213 to verify the item(s) has/have been lost or damaged and support the circumstances surrounding it.
- For stolen items, contact your supervisor and Security Manager as soon as practical.

FOR CACHE ITEMS

Requesting Resource is NOT Being Demobed and Requested Items ARE Available in Supply:

- R&D shall fill request and note on the 213.

Requesting Resource is NOT Being Demobed and Requested Items are NOT Available in Supply.

- The Supply Unit will place an order for the requested items through the regular cache order process on the incident. The order will be shipped to the incident and replacement will take place at the Supply Unit and noted on the 213.

Requesting Resource IS Being Demobed and Requested CACHE Items are NOT in Stock in Supply:

- Along with the 213, complete an *OF-315, Incident Replacement Requisition* for cache items only and take to SPUL for review and approval. Include the requesting resources' email on the form so the Resource Order can be emailed to the Requesting Resource.
- The SPUL will issue S#s pending receipt and verification of proper documentation for cache items.

NON-CACHE Items -- This is the Important Part!!!

Non-Cache items include any item not available through the National Cache System.

Lost, damage, or destroyed government non-cache property shall be reported to the appropriate DIVS or higher-level overhead within 24 hours of occurrence. The requesting resource shall complete an ICS-213 and OF-289, Property Loss and Damage Report – Fire Suppression, available at Orleans Base Camp Supply Unit. Include the following:

- All witnesses shall document the facts and circumstances of the loss or damage on the OF-289. Explanations shall be detailed and indicate how the incident caused the damage.
- The requesting resource will email the completed ICS-213 and OF-289 to the Comp/Claims Unit Leader at scott_parsons@firenet.gov. The COMP will make a determination based upon the documentation presented.
- Approval for replacement is the responsibility of the incident agency and may be delegated to the Incident Management Team for IC and FSC.
- If the replacement request is approved, the replacement cost will be limited to cache equivalent value. The requesting resource will complete OF-315 for the Supply Unit.
- Items that do not have a like-item in the cache will be reviewed and approved at the discretion of the FSC or Incident Business Advisor, as delegated by the Agency Administrator.

LINE ORDER FORM

ORDER#	<u>DATE & TIME ORDERED</u> Received from the Line	<u>WHO PLACED ORDER</u> DIVS, OPS, etc....	<u>DELIVER to (DIV, Heli-Spot, DP, etc.)</u> Division, Heli-Spot, Drop Point, etc.	<u>MODE of DELIVERY</u> Drive, Heli, Pick-up
<u>LATITUDE/LONGITUDE</u>				<u>PHONE #/ CALL SIGN</u>
<u>POINT OF CONTACT @ DELIVERY:</u>				

ITEM#	REQUESTED ITEM	NFES#	AMOUNT	ITEM#	REQUESTED ITEM	NFES#	AMOUNT
DESCRIPTION							
1,000 Foot Hose Lay: Includes the following							
1	10 lengths, 1 1/2" x 100' Hose, 10 lengths, 1" x 100' Hose, 10 ea. 1 1/2" Gated Wyes, 10 ea. 1 1/2" to 1" Reducers, 10 ea. 1" Nozzles.						
Mop-Up Kit: Includes the following							
2	20 lengths 3/4" Hose, 6 - 3/4" Nozzles, 6 - 3/4" Ball Shut Offs, 6 - 1" to 3/4" Reducers, 1 Green Knapsack						
4	Backpack Pump, 5 gallon	1149		26	Batteries, "AA" (package)	0030	
5	Foam, 5 gallon	1145		27	Gasoline, Unleaded (gallon)		
6	Hose, 3/4 inch, SO ft. length	1016		28	Oil, 2 Cycle Mix (quart)	0341	
7	Hose, 1 inch, 100 ft. length	0966		29	Diesel, straight (gallon)		
8	Hose, 1 1/2 inch, 100 ft. length	0967		30	Oil, Bar & Chain (gallon)	1880	
9	Increaser, 3/4" to 1"	2235		31	Fusees (box)	0105	
10	Increaser, 1" to 1 1/2"	0416		32	Torch, Drip Torch ea.	0241	
11	Nozzle, Garden 3/4 inch	0136		33	Mix, Drip Torch 3-1, 5 gal.		
12	Nozzle, Forester, 1"	0024		34	Flagging, Ribbon, Color/Roll		
13	Nozzle, KK Type, 1"	1081		35	Washcloth, Water less	0206	
14	Nozzle, KK Type, 1 1/2"	1082		36	Water, Cubi, 5 gallon ea.	0048	
15	Reducer, 1" to 3/4"	0733		37	Water, Bottled, (case)		
16	Reducer, 1 1/2" to 1"	0010		38	Sports Drink, Gatorade (case)		
17	Tee, Hoseline, 1" x 1" x 3/4"	1809		39	Food, MRE's (12 per Box)	1842	
18	Tee, Hoseline, 1" x 1" x 1"	2240		40	Pump Kit, High Pressure	0870	
19	Tee, Hoseline, 1 1/2" x 1 1/2" x 1"	0230		41	Pump, High Pressure	0148	
20	Wye, Gated, 3/4" inch	0904		42	Pump Kit, Light Weight	0670	
21	Wye, Gated, 1"	0259		43	Sprinkler Kit	1048	
22	Wye, Gated, 1 1/2"	0231		44	Pump Kit, Volume	6041	
23	Tank, Collapsible, Gallons?						
24	Tank, Folding/Frame, Gallons?						
25	Wrap, Structure (roll)	0881					

Order Received in Communications By: _____ Date/Time: _____

Communications Relayed Order To: _____ Date/Time: _____

Order Sent to Line By: _____ Date/Time: _____

CALIFORNIA INTERAGENCY INCIDENT MANAGEMENT TEAM 4

EXPECTATIONS

Welcome to this Incident.
Thank You for your Cooperation & Support!



2020

CONDUCT AND BEHAVIOR

This team is committed to “ZERO TOLERANCE” of careless, illegal, inappropriate and unsafe actions.

Alcohol and/or illegal drugs are NOT allowed within the incident environment or while actively assigned to the incident. Local Law Enforcement Officials will be called to deal with any suspected illegal activities. Each employee has the responsibility to be ready, willing, and able to perform the duties for which they are qualified.

Sexual Harassment

Inappropriate actions or comments will not be tolerated. Everyone is expected to act in a professional manner. It is your responsibility to stop inappropriate actions or comments immediately upon becoming aware of such. Sexual Harassment must be reported to the Human Resource Specialist or Incident Commander. When outside of your designated sleeping area, you are required to wear at least a shirt, appropriate shorts, and shoes or sandals. If you need clarification of these expectations contact the Human Resource Specialist or IC. What we PERMIT we PROMOTE!!!!

SAFETY

The commitment to and accountability for safety is a joint responsibility of firefighters, managers and administrators. Individuals must personally be committed and responsible for their own performance and accountability. Everyone assigned to this incident can expect an assignment that follows all safety rules & regulations. Every person is expected to perform his or her duties in compliance with all known safety practices at all times. Anything less is unacceptable.

EMPHASIS AREAS

Training

All trainees and trainers are expected to follow the procedures outlined in the California Interagency Incident Management Team 4 **Training Expectations – See back page.**

Evaluations

All supervisory personnel assigned will complete an ICS 225 Incident Personnel Performance Rating form for their assigned resources according to agency policy or contractual agreement.

Injuries/Claims

Ensure all injuries and potential claims are reported to the Comp/Claims Unit for completion of appropriate paperwork. Contract claims will be reported to the Procurement Unit Leader.

Work Rest Cycles

The 2: 1 work/rest ratio is mandatory. For every two hours on shift you will be required to rest for one hour. Every effort shall be used to limit work hours to a maximum of 16. If circumstances require you to exceed 16 hours, this needs to be coordinated in advance with your supervisor and the Justification/Mitigation form completed to support the excessive hours prior to submitting for approval by the IC. It is your responsibility to comply with this direction and provide the appropriate documentation to your Supervisor and Finance.

Position Qualifications

Personnel shall only be assigned to positions for which they are qualified. Proof of qualifications shall be approved prior to being assigned to any fire line position. Non-fireline positions may be filled based on the word of the employee pending home unit confirmation, which must be requested immediately. Contract dozer operators, tactical water tender operators and contract fallers must provide proof that they have received the annual fire refresher training.

Engagement/Disengagement

The 10 Standard Orders & 18 Watchout Situations will be followed at all times and mitigated as needed. Staying aware of your situation is critical. This includes Geographic Area and incident briefings. Follow the Risk Management Process outlined in the Incident Response Pocket Guide.

Debriefing

All Branch Directors/Division/Group Supervisors will report to their Supervisor and Situation Unit at the end of the operational period for debriefing with emphasis on the accomplishment of objectives. All unit logs (ICS 214) will be turned in after the debriefing to Documentation reflecting accomplishment and/or special incidents that occurred during the operational period.

Crew Time Reports/Shift Tickets

It is your responsibility to ensure all time is properly accounted for and recorded each shift. The records are to be reviewed and signed by the next level supervisor. A finance "Rules of Engagement" document will be provided in the IAP explaining further requirements.

Social Media

It is your responsibility to know and understand guidelines for firefighter photography, video and social media use. California Interagency Incident Management Team 4 goal is simple: to participate online in a respectful, relevant way that protects our incident's professional reputation, does not confuse the public about the incident and follows the letter and spirit of the law. Be mindful that social media postings can be viewed as unprofessional, damage careers and lead to disciplinary actions. For further information, contact the Public Information Officer.

We look forward to working with you as a valuable member of this effort. If you have any questions or feedback, please feel free to contact any Command and General Staff Member.

JAY KURTH

Incident Commander

ROCKY W. OPLIGER

Deputy Incident Commander

THANK YOU FOR YOUR COOPERATION AND GOOD WORK!!



CALIFORNIA INTERAGENCY INCIDENT MANAGEMENT TEAM 4 TRAINING EXPECTATIONS

1. Upon arrival at the incident and after check-in, the trainee will bring the following documents to the initial meeting with the training specialist:
 - a. A properly initiated Position Task Book.
 - b. Your Request Number and your Agency (3) letter identifier.
 - c. Your agencies Fire Chief or Training Officers name, address, and phone number to insure that a copy of the training documents will be mailed back to your home unit.
 - d. Your current Incident Qualification Card (red card) that identifies you as a Trainee in the position you are seeking to be trained.
2. Have you identified or has a Trainer been assigned to you and if so, have the Trainer present when you meet with the training specialist.
3. At closeout and prior to entering the demobilization process, you should complete, sign, and review with the trainer the Final exit interview form. Once the form is complete, bring the following documents to the Training Specialist for closeout:
 - a. Position Taskbook (Evaluation Record dated and signed by the Trainer).
 - b. Completed ICS 225 (Personal Evaluation Record) dated and signed by both the trainee and trainer.
 - c. Completed Final Exit Interview Form – dated and signed by both the trainee and the trainer.

Trainer Expectations

1. Arrive with the Trainee at the initial meeting with the Training Specialist.
2. Be ready to provide your Contact information and your Incident Request number.
3. Have a Current Incident Qualifications Card (Red Card) in a position of equal or greater qualifications that the Trainee is trying to achieve.
4. Be willing to educate, support, and provide professional and consistent feed back to the trainee during the assignment.
5. Throughout the incident the trainer shall continue to monitor and review with the trainee their tasks and goals within the taskbook.
6. The trainer, where appropriate is expected to sign off task's that are achieved by the trainee and to complete and sign the following documents.
 - a. ICS 225 (Personal Evaluation Form)
 - b. Evaluation Record at the back of the taskbook.
7. The trainer shall portray a positive and professional attitude that lets the trainee know that it is desirable to ask for direction and feedback.
8. When accepting the role as a trainer, you are expected to act in a professional manner that represents the California Interagency Incident Management Team 4 and your home agency.

1. Incident Name	2. Operational Period (Date / Time)		UNIT LOG ICS 214-OS
	From:	To:	

3. Unit Name / Designators	4. Unit Leader (Name and ICS Position)	
----------------------------	--	--

5. Personnel Assigned		
NAME	ICS POSITION	HOME BASE

6. Activity Log (Continue on Reverse)	
TIME	MAJOR EVENTS

7. Prepared by:	Date / Time
UNIT LOG	June 2000
	ICS 214-OS

1. Incident Name

2. Operational Period (Date / Time)

From:

To:

UNIT LOG (CONT.)
ICS 214-OS

6. Activity Log (Continuation Sheet)

TIME	MAJOR EVENTS

7. Prepared by:

Date / Time

UNIT LOG

June 2000

ICS 214-OS