

INCIDENT ACTION PLAN

RED SALMON COMPLEX

CA-SRF-000656 P5NB4S (0510)



OPERATIONAL PERIOD

AUGUST 14-15, 2020

DAY 0600 -1800 HOURS

NIGHT 1800 - 0600 HOURS



DEMOB



CHECK-IN





MAPS



IAP

INCIDENT OBJECTIVES (ICS 202)

1. Incident Name:		2. Operational Period: DAY	
RED SALMON COMPLEX		Date/Time From: 08/14/2020 0600 FRI	Date/Time To: 08/14/2020 1800 FRI
3. Objective(s):			
<i>Management Objectives</i>			
<ul style="list-style-type: none"> • Follow identified standard procedures to minimize the spread of Covid-19 to all functions of the incident. • Utilize nationally recognized risk management processes to minimize threats to the public and emergency responders. • Use risk-based decision making and MIST tactics to protect and defend cultural values and natural resources. • Foster and maintain positive relationships with all stakeholders and the public by sharing critical information so timely decisions and actions can be implemented. • Manage incident costs effectively for the values at risk through regular and ongoing cost analysis. 			
<i>Control Objectives</i>			
<ul style="list-style-type: none"> • Provide initial attack within the TFR and control the fire on Prospect Peak 			
Keep Red and Salmon Fires:			
<ul style="list-style-type: none"> • East of Packsaddle Ridge • West of the Battle Creek Trail • North of the Soldier Creek Trail • South of Shasta - Trinity / Klamath National Forest boundary. 			
4. Operational Period Command Emphasis:			
Heightened level of situational awareness.			
General Situational Awareness:			
Maintain focus on the task at hand. Give clear briefings, and conduct daily after action reviews to continually improve your situational awareness.			
5. Site Safety Plan Required? Yes <input type="checkbox"/> No <input checked="" type="checkbox"/>			
Approved Site Safety Plan(s) Located at:			
6. Incident Action Plan (the items checked below are included in this Incident Action Plan):			
<input checked="" type="checkbox"/> ICS 202	<input type="checkbox"/> ICS 207	Other Attachments:	
<input checked="" type="checkbox"/> ICS 203	<input type="checkbox"/> ICS 208	<input checked="" type="checkbox"/> ICS 214	
<input checked="" type="checkbox"/> ICS 204	<input checked="" type="checkbox"/> ICS 220	<input checked="" type="checkbox"/> HRSP	
<input checked="" type="checkbox"/> ICS 205	<input checked="" type="checkbox"/> Map/Chart	<input checked="" type="checkbox"/> FINANCE MESSAGE	
<input type="checkbox"/> ICS 205A	<input checked="" type="checkbox"/> Weather Forecast/Tides/Currents	<input type="checkbox"/> _____	
<input checked="" type="checkbox"/> ICS 206			
7. Prepared by: DAVE GERBOTH		Position/Title: PSC1	Signature: 
8. Approved by Incident Commander:		Name: JAY KURTH	Signature: 
ICS 202	IAP Page	Date/Time: 08/13/2020 2200	

ORGANIZATION ASSIGNMENT LIST	
1. Incident Name Red Salmon Complex	
2. Date Prepared 8/13/2020	3. Time 2000
4. Operational Period August 14 – 15, 2020 0600 - 0600 DAY SHIFT 0600 – 1800 NIGHT SHIFT 1800 - 0600	
Position	Name
5. Incident Commander and Staff	
Incident Commander	Jay Kurth
Deputy IC	Rocky W. Opliger
Safety Officer	Jason Winbigler / Mike Alforque (T) / Curt Schwarm (T)
Information Officer	Sean Collins / Sonny Saghera / Kristen Miller (T)
Liaison	Steve Anderson / Heather Noel (T)
6. Agency Representatives	
Agency	Name
Six Rivers National Forest	Nolan Colegrove / Roberto Beltran (T)
Karuk Tribe	Bill Tripp
Hoopla Tribe	Greg Moon
Yurok Tribe	Rod Mendez
Interagency Fire Rep	Rick Young
7a. Planning Section ICP	
Chief	Dave Gerboth / Mitch Diehl / Allen Taylor (T)
Resources Unit	Jeremy Camacho / Gina Bald / Gary Bishop
Situation Unit	Damian Guillani / Joe Scuri (T) / EJ Bunzendahl (T)
Training Specialist	Nick Balent (T)
Human Resource Specialist	Adam Alvarez
Demob Unit	Dan Baggao
IMET	Jon Bonk
FBAN	Stewart Turner / Kelly Allen / Diondray Wiley (T)
ITSS	James Whiteside / Mike Laxo
GISS	Matt Eister / Chris Clervi / Chris Barrett / Darci Paull
DOCL	Dan Baggao
7b. Planning Section Orleans	
PSC3	Tom Reaves
8a. Logistics Section ICP	
Chief	Cheryl Raines
Medical Unit	Doug Stewart / Michael Harris (T)
Communications Unit	Sal Bonilla Jr. / Kevin Janes
Food Unit	Ryan Folino
Supply Unit	Jennifer Wells
GSUL	Jeff Burch

ORDM	Christian Pedini / Robert Griffith (T)
8b. Logistics Section Orleans	
Medical Unit	Eric Williams / Jeff Brooks
Communications Unit	Tim McGuire
Facilities Unit	Jan Palecek
Supply Unit	Jennifer Armstrong (T)
9. Day Operations Section	
Ops Section Chief	Jake Cagle
Planning Ops	Kyle Jacobson/ Jeremy Bennett (T)
a. Branch Confingency	
Branch Director	James Courtwright (T)
Trinity Group	Dennis Wilson
Salmon Group	Eric Bader
Long Ridge Group	James Courtwright
b. Branch I	
Branch Director	Matt Reidy / Gordon Meyer (T) (ORLEANS)
Division A	Mark Mott (ORLEANS)
Division D	Glenn Webb
Division K	Unstaffed
c. Branch V	
Branch Director	Robert Bertolina / Daniel Oberq (T)
Division M / N	Tony Rivers
Division O	Zack Becker / Brandon Oberhardt (T)
Division P	Travis Stout / Kevin Norton (T)
d. Branch VII Orleans	
Branch Director	Gary Monday / Paul Johnson
Division U	Nick Bunch / Robert Hoyie (T)
Division W	Robb Berry
Division Y	Danny Breuklander
e. Air Operations Branch	
Air Operations Branch Director	Galen Young
Air Support Supervisor	Jim Stratton
10. Night Operations Section	
Ops Section Chief	Dave Pereira
a. Branch I Night Orleans	
Branch Director	Joe Gonzales (T)
Division D	Graham Rice / Tod Flowers (T)
Division W	Kevin Smith
11. Finance Section	
Finance Section Chief	Judy Reynolds
Time Unit	Sheila Miner / Loni Holt
Procurement Unit	Craig Ericson
Cost	Vicki Wilson
Compensation/Claims Unit	Scott Parsons
Prepared by Gina Bald 08/13/2020	



Red Salmon Complex
Weather Forecast



FORECAST NO: 15
UNITS: Six Rivers / Shasta Trinity
SHIFT DATE: Friday, August 14, 2020
PREDICTION FOR: 0600 - 0600
FORECAST ISSUED: 2000 hrs. 8/13/2020

SIGNED:

Jon Bonk
Jon Bonk: jon.bonk@noaa.gov
Incident Meteorologist
Call or Text Obs to: (240)778-5287

Hot and Dry today. Thunderstorms possible Saturday. Breezy Winds Sunday through Monday.

WEATHER DISCUSSION: High pressure builds over the land while low pressure with ex-tropical moisture moves north from off the southern California coast. The result is hot and dry weather and increasing clouds this evening. The clouds will keep tonight much warmer with moderate humidity recovery at best. Saturday afternoon and evening, the low pressure area will steer moisture from Hurricane Elida across the area and bring a threat of thunderstorms. Storms will likely be dry. Sunday and Monday will be slightly cooler but bring south to southwesterly winds. This is a new direction not yet experienced by these fires.

Note: Jeff Tonkin takes over as IMET at 1000 hrs today.

Today (0600-1800):

Weather: Sunny. Smoke hanging over the fire. Lingering afternoon valley smoke at Willow Creek Helibase.

High Temperatures: Below 5,000 feet: 81-92°; 5,000 feet and higher: 78-83°.

Humidity: Below 5,000 feet: 16-22%, lowest around 1500 hrs, rising through 1800 hrs.
5,000 feet and higher: 22-28%; lowest near 1200 hrs, then slowly rising through 1800 hrs.

20 Foot Winds:

Lower/Mid Slopes: Variable 0-3 mph until 1000, then terrain driven 4-8 mph.

Upper Slopes: Variable 0-3 until 1200, becoming West 4-6 mph until 1500, then Northwest 5-7 mph.

LAL: 1 **Chance of Wetting Rain (0.10"): 0%**

Stability: Low valley inversions may not lift much. Mid-level inversion will hold in place through at least 1600 hrs.

Afternoon Mixing Height: Valleys: 2,500 feet AGL. Ridges: 7,000 feet AGL, if column breaks the inversion.

Tonight (1800-0600):

Weather: Mostly cloudy with clouds above 14,000 feet MSL. Smoke settling in area drainages.

Low Temperatures: Red Fire: 64-68°; Salmon Fire: 65-68°.

Humidity: Below 5,000 feet: Rising to 34-38% through 0200 hrs, then falling to 29-34% by 0600 hrs.
5,000 feet and higher: Slowly rising to 35-40% near 2300 hrs, then falling to 26-30% by 0600 hrs.

20 Foot Winds:

Lower/Mid Slopes: Variable 3-5 mph until 2300 hrs, then drainage 4-6 mph.

Ridges: Northwest 5-7 mph until 2100 hrs, then Variable 0-4 mph.

LAL: 1 **Chance of Wetting Rain (0.10"): 0%**

Inversion: Strong inversion/thermal belt centered around 4,500 ft MSL.

Saturday: Hot, dry and unstable with a 35% chance of a dry thunderstorm. Areas of smoke. Max Temps: 86-97°. Minimum RH: 21-31%. Afternoon Winds - Lower Slopes: Variable/Terrain Driven. Upper slopes: West at 6 mph.

Sunday and Monday Outlook: Slightly cooler, dry, and less unstable. Temperatures in the mid-80s to lower 90s. Afternoon humidity 22-32%. Southwest winds 9-12 mph with gusts around 20 mph. Moderate to poor humidity recovery staying 40% and below overnight.

Weather near the fires with change from 24 hours ago:



IRAWS Radio Frequency 163.350 (simplex):
Packsaddle Ridge DTMF 0043 Salmon Spike DTMF 0044
LeBlanc (Above Schnable Diggings) DTMF 0045

FIRE BEHAVIOR FORECAST

FORECAST NUMBER: 18

TYPE OF FIRE Wildfire

FIRE NAME: Red/Salmon

OPERATIONAL PERIOD 08/14/2020

DATE ISSUED 08/13/2020

TIME ISSUED 2000

UNIT CA-SRF

SIGNED: Stewart Turner, FBAN

Scott Linn, FBAN (T) 

INPUTS

WEATHER SUMMARY:

DISCUSSION... High pressure builds over the land while low pressure with ex-tropical moisture moves north from off the southern California coast. The result is hot and dry weather and increasing clouds this evening. The clouds will keep tonight much warmer with moderate humidity recovery at best. Saturday afternoon and evening, the low pressure area will steer moisture from Hurricane Elida across the area and bring a threat of thunderstorms. Storms will likely be dry. Sunday and Monday will be slightly cooler but bring south to southwesterly winds. This is a new direction not yet experienced by these fires.

See Weather Forecast for details

FIRE BEHAVIOR

GENERAL

Fire activity will be steadily increasing today through Monday with hot temperatures and persistent low humidity. Heat generated from the fire or burn out operations has the potential to break the inversion layer leading to an increase in fire activity. Rapid rates of spread, single and group tree torching with upslope runs and long-range spotting should be expected if a convection column develops. Otherwise, expect surface fire spread with short terrain driven runs as the fire aligns on slopes.

Spotting distance: up to .3 of a mile.

Probability of ignition: near 50%-70%.

Timber ROS: 6-12 ch/hr. Timber FL: 4-8 feet

Brush ROS: 1-3 ch/hr. Brush FL: 1-4 feet

SPECIFIC

SPECIFIC FIRE BEHAVIOR:

Divisions A,D,U,W,Y: The fire continues to burn actively in Red Cap drainage, Prospect mountain spot and near Indian rocks. Terrain driven runs, single and group tree torching with spotting up to .3 of a mile occur during the peak burn period. Where the fire has burned to the line, smoldering and creeping should be expected. Conditions for black line operations will be favorable mid to late afternoon through the evening for Div. A and Y.

Divisions K,M,N,O: Creeping and smoldering will continue where black line operations have been completed. Be vigilant for active fire behavior with surface running and spotting from the main fire as it continues to burn towards the east and south. The fire has aligned itself in many of the drainages along backbone and salmon ridges.

Divisions R,P Trinity, Red, Salmon, Long Ridge: No fire activity is expected at this time.

Night Operations (All Divisions): Active burning will continue until around 2200. After 2200 expect slow surface spread and creeping while jack pots continue to burn through the night. As the thermal belt sets up around 4500-5500' expect fire activity to slowly increase. Your best prospect for burning operations will be early in the evening and then again in the early morning hours.

AIR OPERATIONS

Low level inversion lifts around 1600 hrs. Smoke will impact aviation visibility on all branches.

SAFETY

Limited lookout positions and visibility impacted by heavy smoke may compromise your ability to see what the fire is doing. Use caution when working in areas with poor visibility. Know what your fire is doing at all times.

Base all action on current and expected fire behavior

Division/Group Assignment List (ICS 204 WF)
Controlled Unclassified Information//Basic

1. Incident Name:				3.		
RED SALMON COMPLEX				CONT.	Division/Group:	
2. Operational Period: DAY					TRINITY CONTINGENCY	
Date/Time From: 08/14/2020 0600 FRI		Date/Time To: 08/14/2020 1800 FRI				
4. Operations Personnel						
OPERATIONS CHIEF		JAKE CAGLE		BRANCH DIRECTOR		JAMES COURTWRIGHT (T)
DIVISION/GROUP SUPERVISOR		DENNIS WILSON		AIR ATTACK SUPERVISOR		
5. Resources Assigned this Period						
Strike Team / Task Force / Resource Designator		LWD	Leader	Number Persons	Drop Off PT./Time	Pick Up PT./Time
WT - S2 - CATTLE LACK RANCH E-12		08/23	JIM GOLDIE	1	MILL GAP SPIKE/0600	MILL GAP SPIKE/1800
WT - S2 - CATTLE LACK RANCH E-13		08/23	AL CROSS	1	MILL GAP SPIKE/0600	MILL GAP SPIKE/1800
MAST - NORTHSTATE E-82		08/16	CARSON METZ	2	MILL GAP SPIKE/0600	MILL GAP SPIKE/1800
HEQB O-289		08/20	JAMES HALL	1	MILL GAP SPIKE/0600	MILL GAP SPIKE/1800
HEQB (T) O-210.4		08/16	ERIC SNIPES	1	MILL GAP SPIKE/0600	MILL GAP SPIKE/1800
6. Control Operations/Work Assignments:						
Masticate along Mill Creek Trailhead Road.						
7. Special Instructions:						
Utilize MIST tactics. Utilize READ's for cultural and environmental resource concerns. ID helispots and drop points, get lat-longs and provide to the DIVS. Back-haul trash and excess equipment i.e. nets, swivels and ice chests to logistics. Do not post lookouts on any bed rock out cropping without first getting clearance from REAF or READ.						
ARCHs / REAFs Check in / out with DIVS when entering and leaving divisions.						
8. Division/Group Communication Summary						
Function	Channel	RX Frequency N/W	RX Tone/NAC	TX Frequency N/W	TX Tone/NAC	Mode
COMMAND	3 - NIFC C10	170.4125N		165.9625N	T3-131.8	A
COMMAND	4 - NIFC C11	170.6875N		166.5750N	T3 - 131.8	A
COMMAND	5 - NIFC C28	173.5000N		165.3875N	T3-131.8	A
TACTICAL	12 - R5 TAC 5	167.1125N		167.1125N		A
AIR TO GROUND	13 - A/G TAC	165.3625N		165.3625N		A
AIR TO GROUND	14 - A/G	169.7250N		169.7250N		A
9. Prepared By (Resource Unit Leader)			Approved By (Planning Section Chief)		Date	Time
GINA BALD			DAVE GERBOTH		08/13/2020	2000

Division/Group Assignment List (ICS 204 WF)
Controlled Unclassified Information//Basic

1. Incident Name:				3.		
RED SALMON COMPLEX				Branch:		Division/Group:
2. Operational Period: DAY				CONT.		SALMON CONTINGENCY
Date/Time From: 08/14/2020 0600 FRI		Date/Time To: 08/14/2020 1800 FRI				
4. Operations Personnel						
OPERATIONS CHIEF JAKE CAGLE		BRANCH DIRECTOR JAMES COURTWRIGHT (T)				
DIVISION/GROUP SUPERVISOR ERIC BADER (0-3) LWD 8/22		AIR ATTACK SUPERVISOR				
5. Resources Assigned this Period						
Strike Team / Task Force / Resource Designator		LWD	Leader	Number Persons	Drop Off PT./Time	Pick Up PT./Time
WT - S2 - DAGEN E-14		08/22	BRIAN DAGEN	1	SALMON SPIKE/0600	SALMON SPIKE/1800
DOZ - T2 -BOGGS E-103		08/15	DYLAN BOGGS	2	SALMON SPIKE/0600	SALMON SPIKE/1800
MAST - T2 - FIGAS E-252		08/14	ROBERT FIGAS	1	SALMON SPIKE/0600	SALMON SPIKE/1800
MAST - T2 - LAPAGE E-253		08/14	RICH JANE	1	SALMON SPIKE/0600	SALMON SPIKE/1800
6. Control Operations/Work Assignments:						
Construct indirect line and scout ahead for line placement.						
7. Special Instructions:						
Utilize MIST tactics. Utilize READ's for cultural and environmental resource concerns. ID helispots and drop points, get lat-longs and provide to the DIVS. Back-haul trash and excess equipment i.e. nets, swivels and ice chests to logistics. Do not post lookouts on any bed rock out cropping without first getting clearance from REAF or READ.						
ARCHs / REAFs Check in / out with DIVS when entering and leaving divisions.						
8. Division/Group Communication Summary						
Function	Channel	RX Frequency N/W	RX Tone/NAC	TX Frequency N/W	TX Tone/NAC	Mode
COMMAND	3 - NIFC C10	170.4125N		165.9625N	T3-131.8	A
COMMAND	4 - NIFC C11	170.6875N		166.5750N	T3 - 131.8	A
COMMAND	5 - NIFC C28	173.5000N		165.3875N	T3-131.8	A
TACTICAL	11 - R5 TAC 4	166.5500N		166.5500N		A
AIR TO GROUND	14 - A/G CMD	169.7250N		169.7250N		A
AIR TO GROUND	13 - A/G TAC	165.3625N		165.3625N		A
9. Prepared By (Resource Unit Leader)		Approved By (Planning Section Chief)			Date	Time
GINA BALD		DAVE GERBOTH			08/13/2020	2000

Division/Group Assignment List (ICS 204 WF)
Controlled Unclassified Information//Basic

1. Incident Name:		3.				
RED SALMON COMPLEX		Branch:	Division/Group:			
2. Operational Period: DAY		CONT.	LONG RIDGE CONTINGENCY			
Date/Time From: 08/14/2020 0600 FRI	Date/Time To: 08/14/2020 1800 FRI					
4. Operations Personnel						
OPERATIONS CHIEF	JAKE CAGLE	BRANCH DIRECTOR	JAMES COURTWRIGHT (T)			
DIVISION/GROUP SUPERVISOR	JAMES COURTWRIGHT	AIR ATTACK SUPERVISOR				
5. Resources Assigned this Period						
Strike Team / Task Force / Resource Designator	LWD	Leader	Number Persons	Drop Off PT./Time	Pick Up PT./Time	
6. Control Operations/Work Assignments:						
7. Special Instructions:						
Utilize MIST tactics. Utilize READ's for cultural and environmental resource concerns. ID helispots and drop points, get lat-longs and provide to the DIVS. Back-haul trash and excess equipment i.e. nets, swivels and ice chests to logistics. Do not post lookouts on any bed rock out cropping without first getting clearance from REAF or READ. Mountain Medic at DP-9						
ARCHs / REAFs Check in / out with DIVS when entering and leaving divisions.						
8. Division/Group Communication Summary						
Function	Channel	RX Frequency N/W	RX Tone/NAC	TX Frequency N/W	TX Tone/NAC	Mode
COMMAND	3	170.4125N		165.9625N	T3-131.8	A
COMMAND	5	173.5000N		165.3875N	T3-131.8	A
COMMAND	4	170.6875N		166.5750N	T4 - 136.5	A
TACTICAL	9	166.7750N		166.7750N		A
AIR TO GROUND	13	165.3625N		165.3625N		A
AIR TO GROUND	14	169.7250N		169.7250N		A
9. Prepared By (Resource Unit Leader)		Approved By (Planning Section Chief)		Date	Time	
GINA BALD		DAVE GERBOTH		08/13/2020	2000	

Division/Group Assignment List (ICS 204 WF)
Controlled Unclassified Information//Basic

1. Incident Name:				3.		
RED SALMON COMPLEX.				Branch:		Division/Group:
2. Operational Period: DAY				I		A
Date/Time From: 08/14/2020 0600 FRI		Date/Time To: 08/14/2020 1800 FRI				
4. Operations Personnel						
OPERATIONS CHIEF		JAKE CAGLE		BRANCH DIRECTOR		MATT REIDY GORDON MEYER (O-237) LWD 8/14 (T)
DIVISION/GROUP SUPERVISOR		MARK W MOTT		AIR ATTACK SUPERVISOR		
5. Resources Assigned this Period						
Strike Team / Task Force / Resource Designator		LWD	Leader	Number Persons	Drop Off PT./Time	Pick Up PT./Time
CREW - T1 - SALMON RIVER IHC C-3		08/20	KELSEY LOFDAHL	19	RED SPIKE/0600	RED SPIKE/1800
CREW - T1 - SMITH RIVER IHC (C-43)		08/20	DOUGLAS DENLINGER	21	RED SPIKE/0600	RED SPIKE/1800
ENG - T3 - SRF 331 (E-170)		08/18	BRYAN LANNING	6	RED SPIKE/0600	RED SPIKE/1800
ENG - T3 - SRF 332 (E-171)		08/18	GEOFFREY PHELAN	5	RED SPIKE/0600	RED SPIKE/1800
WT - S1 - N STATE (E-7)		08/15	ANTHONY MUNK	2	RED SPIKE/0600	RED SPIKE/1800
WT - T2 - SRF 15 E-174		08/19	MICHAEL ESPINOZA	2	RED SPIKE/0600	RED SPIKE/1800
WT - S2 - CATES (E-70)		08/18	TBD	2	RED SPIKE/0600	RED SPIKE/1800
WT - S2 - HOLT LOGGING (E-71)		08/23	PAUL HARDIG	1	RED SPIKE/0600	RED SPIKE/1800
DOZ - T2 - KEN SMITH (E-83)		08/14	KENNY SMITH	2	RED SPIKE/0600	RED SPIKE/1800
HEQB (O-65)		08/14	ROBERT ISER	1	RED SPIKE/0600	RED SPIKE/1800
HEQB (T) (O-210.3)		08/16	BENJAMIN PETERSON	1	RED SPIKE/0600	RED SPIKE/1800
TFLD (O-169)		08/14	MARK SMITH	1	RED SPIKE/0600	RED SPIKE/1800
FALM PACIFIC RIDGELINE O-101		08/20	GAVRIEL SOTELA	2	RED SPIKE/0600	RED SPIKE/1800
REMS - SMA REMS 6 (O-142) BRANCH RESOURCE		08/16	ANTONIO DEL CASTILLO	4	RED SPIKE/0600	RED SPIKE/1800
EMPF (O-23)		08/20	LINDA BUELL	1	RED SPIKE/0600	RED SPIKE/1800
EMTF (O-30)		08/20	DOMINIC ANTES	1	RED SPIKE/0600	RED SPIKE/1800
REAF (O-216)		08/15	FRANK LAKE	1	RED SPIKE/0600	RED SPIKE/1800
REAF(T) (O-396)		08/23	KATHERINE SIEDEL	1	RED SPIKE/0600	RED SPIKE/1800
6. Division/Group Communication Summary						
Function	Channel	RX Frequency N/W	RX Tone/NAC	TX Frequency N/W	TX Tone/NAC	Mode
COMMAND	3 - NIFC C10	170.4125N		165.9625N	T3-131.8	A
COMMAND	4 - NIFC C11	170.6875N		166.5750N	T3 - 131.8	A
COMMAND	5 - NIFC C28	173.5000		165.3875	T3 - 131.8	A
TACTICAL	7 - VTAC 11	151.1375N	T6 - 156.7	151.1375N	T6 - 156.7	A
AIR TO GROUND	13 - A/G TAC	165.3625N		165.3625N		A
AIR TO GROUND	14 - A/G CMD	169.7250N		169.7250N		A
9. Prepared By (Resource Unit Leader)		Approved By (Planning Section Chief)			Date	Time
GINA BALD		DAVE GERBOTH			08/13/2020	2000

Division/Group Assignment List (ICS 204 WF)
Controlled Unclassified Information//Basic

1. Incident Name:		3.				
RED SALMON COMPLEX		Branch:		Division/Group:		
2. Operational Period: DAY		I		A		
Date/Time From: 08/14/2020 0600 FRI	Date/Time To: 08/14/2020 1800 FRI					
4. Operations Personnel						
OPERATIONS CHIEF	JAKE CAGLE	BRANCH DIRECTOR		MATT REIDY GORDON MEYER (O-237) LWD 8/14 (T)		
DIVISION/GROUP SUPERVISOR	MARK W MOTT	AIR ATTACK SUPERVISOR				
5. Resources Assigned this Period						
Strike Team / Task Force / Resource Designator	LWD	Leader	Number Persons	Drop Off PT./Time	Pick Up PT./Time	
SOFR O-144	08/19	TIM BENEDICT	1	RED SPIKE/0600	RED SPIKE/1800	
REAF (T) (O-247)	08/16	MEGHAN WHITMAN	1	RED SPIKE/0600	RED SPIKE/1800	
6. Control Operations/Work Assignments:						
Protect Ferris Cabin. Hold burnout from 10N01 road from Lub Trail to Black Mountain. Bridge fire off of Black Mountain to the Middle Fork of the Red Cap.						
7. Special Instructions:						
Utilize MIST tactics. Utilize READ's for cultural and environmental resource concerns. ID helispots and drop points, get lat-longs and provide to the DIVS. Back-haul trash and excess equipment i.e. nets, swivels and ice chests to logistics. Do not post lookouts on any bed rock out cropping without first getting clearance from REAF or READ.						
ARCHs / REAFs Check in / out with DIVS when entering and leaving divisions.						
FOBS assigned to SIT will be working in Branch I: S. Ashbaugh / A. Ruiz (T)						
SMA REMS-6 Available for Branch I						
8. Division/Group Communication Summary						
Function	Channel	RX Frequency N/W	RX Tone/NAC	TX Frequency N/W	TX Tone/NAC	Mode
COMMAND	3 - NIFC C10	170.4125N		165.9625N	T3-131.8	A
COMMAND	4 - NIFC C11	170.6875N		166.5750N	T3 - 131.8	A
COMMAND	5 - NIFC C28	173.5000		165.3875	T3 - 131.8	A
TACTICAL	7 - VTAC 11	151.1375N	T6 - 156.7	151.1375N	T6 - 156.7	A
AIR TO GROUND	13 - A/G TAC	165.3625N		165.3625N		A
AIR TO GROUND	14 - A/G CMD	169.7250N		169.7250N		A
9. Prepared By (Resource Unit Leader)		Approved By (Planning Section Chief)		Date	Time	
GINA BALD		DAVE GERBOTH		08/13/2020	2000	

Division/Group Assignment List (ICS 204 WF)
Controlled Unclassified Information//Basic

1. Incident Name:				3.		
RED SALMON COMPLEX				Branch:		Division/Group:
2. Operational Period: DAY				I		D
Date/Time From: 08/14/2020 0600 FRI		Date/Time To: 08/14/2020 1800 FRI				
4. Operations Personnel						
OPERATIONS CHIEF		JAKE CAGLE		BRANCH DIRECTOR		MATT REIDY GORDON MEYER (O-237) LWD 8/14 (T)
DIVISION/GROUP SUPERVISOR		GLENN WEBB (O-129) LWD 8/15		AIR ATTACK SUPERVISOR		
5. Resources Assigned this Period						
Strike Team / Task Force / Resource Designator		LWD	Leader	Number Persons	Drop Off PT./Time	Pick Up PT./Time
CREW - T1 - KLAMATH 14 C-44		08/20	CHEVYO MUNK	20	RED SPIKE/0600	RED SPIKE/1800
TALLAC IHC		08/28		20	RED SPIKE/0600	RED SPIKE/1800
CREW - T2 - BIRRUETA 17023 (C-32)		08/17	JUAN BIRRUETA	20	RED SPIKE/0600	RED SPIKE/1800
WFM - T1 - UNAWEEP O-93		08/14	KELLY BOYD	9	RED SPIKE/0600	RED SPIKE/1800
ENG - T3 - SHF 362 (E-11)		08/22	LONNY HAGEDON	5	RED SPIKE/0600	RED SPIKE/1800
ENG - T3 - SHF 343 (E-21)		08/22	SHAWN ZICKEFFOOSE	5	RED SPIKE/0600	RED SPIKE/1800
ENG - T3 - SHF 313 (E-7)		08/22	ELLIOT GROO	5	RED SPIKE/0600	RED SPIKE/1800
ENG - T3 - SRF 323 E-169		08/18	TOMAS VARGAS	6	RED SPIKE/0600	RED SPIKE/1800
FALM - T1 - MOEN TIMBER (O-99)		08/20	TOM DAVIS	2	RED SPIKE/0600	RED SPIKE/1800
EMPF (O-31)		08/16	KEVIN CULBERTSON	1	RED SPIKE/0600	RED SPIKE/1800
EMTF O-293		08/19	MICHAEL DUNHAM	1	RED SPIKE/0600	RED SPIKE/1800
REAF O-383		08/22	ANALISA TRIPP	1	RED SPIKE/0600	RED SPIKE/1800
SOF2 O-427		08/25	GEORGE LIBERCAJT	1	RED SPIKE/0600	RED SPIKE/1800
SOFR (O-391)		08/25	RICKY MEADOWS	1	RED SPIKE/0600	RED SPIKE/1800
SOFR O-295		08/19	JOBEE FARRER	1	RED SPIKE/0600	RED SPIKE/1800
6. Control Operations/Work Assignments:						
Hold and patrol containment lines. Burn as needed when conditions permit. Scout and construct direct and indirect handline on the Prospect Peak spot.						
7. Special Instructions:						
8. Division/Group Communication Summary						
Function	Channel	RX Frequency N/W	RX Tone/NAC	TX Frequency N/W	TX Tone/NAC	Mode
COMMAND	3 - NIFC C10	170.4125N		165.9625N	T3-131.8	A
COMMAND	4 - NIFC C11	170.6875N		166.5750N	T3 - 131.8	A
COMMAND	5 - NIFC C28	173.5000N		165.3875N	T3 - 131.8	A
TACTICAL	8 - VTAC 12	154.4525N	T6 - 156.7	154.4525N	T6 - 156.7	A
AIR TO GROUND	13 - A/G TAC	165.3625N		165.3625N		A
AIR TO GROUND	14 - A/G CMD	169.7250N		169.7250N		A
9. Prepared By (Resource Unit Leader)			Approved By (Planning Section Chief)		Date	Time
GARY BISHOP			DAVE GERBOTH		08/13/2020	2200

Division/Group Assignment List (ICS 204 WF)
Controlled Unclassified Information//Basic

1. Incident Name:		3.	
RED SALMON COMPLEX		Branch:	Division/Group:
2. Operational Period: DAY		I	D
Date/Time From: 08/14/2020 0600 FRI	Date/Time To: 08/14/2020 1800 FRI		
4. Operations Personnel			
OPERATIONS CHIEF	JAKE CAGLE	BRANCH DIRECTOR	MATT REIDY GORDON MEYER (O-237) LWD 8/14 (T)
DIVISION/GROUP SUPERVISOR	GLENN WEBB (O-129) LWD 8/15	AIR ATTACK SUPERVISOR	

7. Special Instructions:

Utilize MIST tactics. All line resources will spike overnight. Utilize READ's for cultural and environmental resource concerns. ID helispots and drop points, get lat-longs. Please return nets, swivels, and ice chests. Back-haul trash and excess equipment. All resources use QR code to check-in. Do not post lookouts on any bed rock out cropping without first getting clearance from REAF or READ. **ARCHs / REAFs** will check in / out with DIVS when entering and leaving their divisions.

FOBS assigned to SIT will be working in Branch I: S. Ashbaugh / A. Ruiz (T)

SMA REMS-6 Available for Branch I

8. Division/Group Communication Summary						
Function	Channel	RX Frequency N/W	RX Tone/NAC	TX Frequency N/W	TX Tone/NAC	Mode
COMMAND	3 - NIFC C10	170.4125N		165.9625N	T3-131.8	A
COMMAND	4 - NIFC C11	170.6875N		166.5750N	T3 - 131.8	A
COMMAND	5 - NIFC C28	173.5000N		165.3875N	T3 - 131.8	A
TACTICAL	8 - VTAC 12	154.4525N	T6 - 156.7	154.4525N	T6 - 156.7	A
AIR TO GROUND	13 - A/G TAC	165.3625N		165.3625N		A
AIR TO GROUND	14 - A/G CMD	169.7250N		169.7250N		A
9. Prepared By (Resource Unit Leader)		Approved By (Planning Section Chief)		Date	Time	
GARY BISHOP		DAVE GERBOTH		08/13/2020	2200	

Division/Group Assignment List (ICS 204 WF)

Controlled Unclassified Information//Basic

1. Incident Name:		3.				
RED SALMON COMPLEX		Branch: I		Division/Group: K		
2. Operational Period:		DAY				
Date/Time From: 08/14/2020 0600 FRI		Date/Time To: 08/14/2020 1800 FRI				
4. Operations Personnel						
OPERATIONS CHIEF		JAKE CAGLE		BRANCH DIRECTOR		MATT REIDY GORDON MEYER (O-237) LWD 8/14 (T)
DIVISION/GROUP SUPERVISOR		UNSTAFFED		AIR ATTACK SUPERVISOR		
5. Resources Assigned this Period						
Strike Team / Task Force / Resource Designator		LWD	Leader	Number Persons	Drop Off PT./Time	Pick Up PT./Time
6. Control Operations/Work Assignments:						
7. Special Instructions:						
<p>Utilize MIST tactics. Utilize READ's for cultural and environmental resource concerns. ID helispots and drop points, get lat-long's and provide to the DIVS. Back-haul trash and excess equipment i.e. nets, swivels and ice chests to logistics. Do not post lookouts on any bed rock out cropping without first getting clearance from REAF or READ.</p> <p>**ARCHs / REAFs** Check in / out with DIVS when entering and leaving divisions.</p> <p>SMA REMS-6 Available for Branch I</p>						
8. Division/Group Communication Summary						
Function	Channel	RX Frequency N/W	RX Tone/NAC	TX Frequency N/W	TX Tone/NAC	Mode
COMMAND	3 - NIFC C10	170.4125N		165.9625N	T3-131.8	A
COMMAND	4 - NIFC C11	170.6875N		166.5750N	T3 - 131.8	A
COMMAND	5 - NIFC C28	173.5000N		165.3875N	T3 - 131.8	A
TACTICAL	9 - VTAC 13	158.7375N	T6 - 156.7	158.7375N	T6 - 156.7	A
AIR TO GROUND	13 - A/G TAC	165.3625N		165.3625N		A
AIR TO GROUND	14 - A/G CMD	169.7250N		169.7250N		A
9. Prepared By (Resource Unit Leader)		Approved By (Planning Section Chief)		Date		Time
GARY BISHOP		DAVE GERBOTH		08/13/2020		2200

Division/Group Assignment List (ICS 204 WF)
Controlled Unclassified Information//Basic

1. Incident Name:		3.	
RED SALMON COMPLEX		Branch:	Division/Group:
2. Operational Period: DAY		V	M/N
Date/Time From: 08/14/2020 0600 FRI	Date/Time To: 08/14/2020 1800 FRI		

4. Operations Personnel			
OPERATIONS CHIEF	JAKE CAGLE	BRANCH DIRECTOR	ROBERT BERTOLINA (O-248) LWD 8/18 DANIEL OBERG (O-271) LWD 8/19 (T)
DIVISION/GROUP SUPERVISOR	TONY RIVERS (O-398) LWD 8/19		

5. Resources Assigned this Period					
Strike Team / Task Force / Resource Designator	LWD	Leader	Number Persons	Drop Off PT./Time	Pick Up PT./Time
CREW - T2 - PAT RICK 17002 (C-10)	08/14	GARTH CHAMBERS	20	SALMON SPIKE/0600	SALMON SPIKE/1800
CREW - T2 - GRIZZLY 17030 (C-35)	08/17	FERNANDO PEREZ	20	SALMON SPIKE/0600	SALMON SPIKE/1800
CREW - T2 - GRIZZLY 17029 (C-34)	08/17	SOLIZE ORTIZ	20	SALMON SPIKE/0600	SALMON SPIKE/1800
CREW - T2 - BIRRUETA 17024 (C-33)	08/24	JUAN BIRRUETA	20	SALMON SPIKE/0600	SALMON SPIKE/1800
ENG - T6 - GRT 112 (E-47)	08/21	DANIEL SCHRAMM	2	SALMON SPIKE/0600	SALMON SPIKE/1800
WT - T2 - PIERCE FIRE E-54	08/26	WYATT LYDELL	1	SALMON SPIKE/0600	SALMON SPIKE/1800
TFLD (O-8)	08/21	JEFFREY ARCHER	1	SALMON SPIKE/0600	SALMON SPIKE/1800
HECM	12/31	TBD	4	SALMON SPIKE/0600	SALMON SPIKE/1800
EMPF O-25	08/14	THOMAS ZAMORA	1	SALMON SPIKE/0600	SALMON SPIKE/1800
EMPF O-28	08/14	STEVE MOLNAR	1	SALMON SPIKE/0600	SALMON SPIKE /1800
EMTF O-32	08/20	NICK MARTINEZ	1	SALMON SPIKE/0600	SALMON SPIKE/1800
EMPF (O-356)	08/21	ERIK GUSTAFSON	1	SALMON SPIKE/0600	SALMON SPIKE/1800
EMPF (O-359)	08/21	ZACK STETSON	1	SALMON SPIKE/0600	SALMON SPIKE/1800
EMTF (O-294)	08/19	MICHAEL RAMSEY	1	SALMON SPIKE/0600	SALMON SPIKE/1800
EMPF (E-251.1)	08/19	AMARISA CASWELL	1	SALMON SPIKE/0600	SALMON SPIKE/1800
SOFR (O-4)	08/15	DON FOCO	1	SALMON SPIKE/0600	SALMON SPIKE/1800
REAF (O-217)	08/15	BRUCE ROBERT CANN	1	SALMON SPIKE/0600	SALMON SPIKE/1800

8. Division/Group Communication Summary						
Function	Channel	RX Frequency N/W	RX Tone/NAC	TX Frequency N/W	TX Tone/NAC	Mode
COMMAND	3 - NIFC C10	170.4125N		165.9625N	T3-131.8	A
COMMAND	4 - NIFC C11	170.6875N		166.5750N	T3 - 131.8	A
COMMAND	5 - NIFC C28	173.5000N		165.3875N	T3-131.8	A
TACTICAL	7 - NIFC TAC 3	168.6000N		168.6000N		A
TACTICAL	8 - NIFC TAC 5	166.7250N		166.7250N		A
AIR TO GROUND	13 - A/G TAC	165.3625N		165.3625N		A
AIR TO GROUND	14 - A/G CMD	169.7250N		169.7250N		A

9. Prepared By (Resource Unit Leader)	Approved By (Planning Section Chief)	Date	Time
GARY BISHOP	DAVE GERBOTH	08/13/2020	1102

Division/Group Assignment List (ICS 204 WF)
Controlled Unclassified Information//Basic

1. Incident Name:			3.			
RED SALMON COMPLEX			Branch:		Division/Group:	
2. Operational Period: DAY			V		M/N	
Date/Time From: 08/14/2020 0600 FRI	Date/Time To: 08/14/2020 1800 FRI					
4. Operations Personnel						
OPERATIONS CHIEF		JAKE CAGLE		BRANCH DIRECTOR		ROBERT BERTOLINA (O-248) LWD 8/18 DANIEL OBERG (O-271) LWD 8/19 (T)
DIVISION/GROUP SUPERVISOR		TONY RIVERS (O-398) LWD 8/19				
5. Resources Assigned this Period						
Strike Team / Task Force / Resource Designator		LWD	Leader	Number Persons	Drop Off PT./Time	Pick Up PT./Time
REAF (O-382)		08/21	ALEX WATTS-TOBIN	1	SALMON SPIKE/0600	SALMON SPIKE/1800
6. Control Operations/Work Assignments:						
Hold and mop up direct handlines.						
7. Special Instructions:						
Utilize MIST tactics. Utilize READ's for cultural and environmental resource concerns. ID helispots and drop points, get lat-longs and provide to the DIVS. Back-haul trash and excess equipment i.e. nets, swivels and ice chests to logistics. Do not post lookouts on any bed rock out cropping without first getting clearance from REAF or READ.						
FOBS assigned to SIT will be working in Branch V: M. Snyder / S. Powell						
ARCHs / REAFs will check in / out with DIVS when entering and leaving their divisions.						
8. Division/Group Communication Summary						
Function	Channel	RX Frequency N/W	RX Tone/NAC	TX Frequency N/W	TX Tone/NAC	Mode
COMMAND	3 - NIFC C10	170.4125N		165.9625N	T3-131.8	A
COMMAND	4 - NIFC C11	170.6875N		166.5750N	T3 - 131.8	A
COMMAND	5 - NIFC C28	173.5000N		165.3875N	T3-131.8	A
TACTICAL	7 - NIFC TAC 3	168.6000N		168.6000N		A
TACTICAL	8 - NIFC TAC 5	166.7250N		166.7250N		A
AIR TO GROUND	13 - A/G TAC	165.3625N		165.3625N		A
AIR TO GROUND	14 - A/G CMD	169.7250N		169.7250N		A
9. Prepared By (Resource Unit Leader)			Approved By (Planning Section Chief)		Date	Time
GARY BISHOP			DAVE GERBOTH		08/13/2020	1102

Division/Group Assignment List (ICS 204 WF)

Controlled Unclassified Information//Basic

1. Incident Name:				3.		
RED SALMON COMPLEX				Branch:		Division/Group:
2. Operational Period: DAY				V		O
Date/Time From: 08/14/2020 0600 FRI		Date/Time To: 08/14/2020 1800 FRI				
4. Operations Personnel						
OPERATIONS CHIEF		JAKE CAGLE		BRANCH DIRECTOR		ROBERT BERTOLINA (O-248) LWD 8/18 DANIEL OBERG (O-271) LWD 8/19 (T)
DIVISION/GROUP SUPERVISOR		ZACH BECKER LWD 8/16 BRANDON OBERHARDT LWD 8/20 (T)				
5. Resources Assigned this Period						
Strike Team / Task Force / Resource Designator		LWD	Leader	Number Persons	Drop Off PT./Time	Pick Up PT./Time
CREW - T1 - TAHOE IHC C-9		08/18	DANIEL GUERRERO	21	BACKBONE SPIKE/0600	BACKBONE SPIKE/1800
CREW - T1 - PAYSON IHC (C-5)		08/14	MIKE SCHINSTOCK	20	BACKBONE SPIKE/0600	BACKBONE SPIKE/1800
CREW - T2IA - FIRESTORM 4 (C-46)		08/19	BEN PAVAN	20	BACKBONE SPIKE/0600	BACKBONE SPIKE/1800
CREW - T1 - KLAMATH 14 (C-44)		08/20	CHEVYO MUNK	20	BACKBONE SPIKE/0600	BACKBONE SPIKE/1800
ENG - T3 - NORTHWEST 804 E-112		08/16	MATT STORMS	4	BACKBONE SPIKE/0600	BACKBONE SPIKE/1800
ENG - T3 - AZ 55 E-111		08/16	TIM SNYDER	4	BACKBONE SPIKE/0600	BACKBONE SPIKE/1800
WT - S2 - INF 21 E-31		08/14	KEN ZHEOL	2	BACKBONE SPIKE/0600	BACKBONE SPIKE/1800
FALM - T1 - REDWOOD EMPIRE (O-102)		08/20	JESSE GONZALEZ	2	BACKBONE SPIKE/0600	BACKBONE SPIKE/1800
HECM			TBD	4	BACKBONE SPIKE/0600	BACKBONE SPIKE/1800
PACKER 1		08/15	KENNY GRAVES	5	BACKBONE SPIKE/0600	BACKBONE SPIKE/1800
TFLD (O-350)		08/21	JOHN ESCALERA	1	BACKBONE SPIKE/0600	BACKBONE SPIKE/1800
FELB (O-64.1)		08/20	ZACHARY PIGATI	1	BACKBONE SPIKE/0600	BACKBONE SPIKE/1800
FELB (O-276)		08/19	JOSHUA STEELE	1	BACKBONE SPIKE/0600	BACKBONE SPIKE/1800
REMS - MOD - FRF (O-344)		08/20	MICHAEL RUDOLPH	4	BACKBONE SPIKE/0600	BACKBONE SPIKE/1800
EMPF O-27		08/16	RICHARD TALIAFERRO	1	BACKBONE SPIKE/0600	BACKBONE SPIKE/1800
EMPF O-386		08/22	ERIC GRIFFITHS	1	BACKBONE SPIKE/0600	BACKBONE SPIKE/1800
8. Division/Group Communication Summary						
Function	Channel	RX Frequency N/W	RX Tone/NAC	TX Frequency N/W	TX Tone/NAC	Mode
COMMAND	3 - NIFC C10	170.4125N		165.9625N	T3-131.8	A
COMMAND	4 - NIFC C11	170.6875N		166.5750N	T3 - 131.8	A
COMMAND	5 - NIFC C28	173.5000N		165.3875N	T3-131.8	A
TACTICAL	7 - NIFC TAC 3	168.6000N		168.6000N		A
TACTICAL	8 - NIFC TAC 5	166.7250N		166.7250N		A
AIR TO GROUND	13 - A/G TAC	165.3625N		165.3625N		A
AIR TO GROUND	14 - A/G CMD	169.7250N		169.7250N		A
9. Prepared By (Resource Unit Leader)			Approved By (Planning Section Chief)		Date	Time
GARY BISHOP			DAVE GERBOTH		08/13/2020	2200

Division/Group Assignment List (ICS 204 WF)

Controlled Unclassified Information//Basic

1. Incident Name:			3.			
RED SALMON COMPLEX			Branch:		Division/Group:	
2. Operational Period: DAY			V		O	
Date/Time From: 08/14/2020 0600 FRI		Date/Time To: 08/14/2020 1800 FRI				
4. Operations Personnel						
OPERATIONS CHIEF		JAKE CAGLE		BRANCH DIRECTOR		ROBERT BERTOLINA (O-248) LWD 8/18 DANIEL OBERG (O-271) LWD 8/19 (T)
DIVISION/GROUP SUPERVISOR		ZACH BECKER LWD 8/16 BRANDON OBERHARDT LWD 8/20 (T)				
5. Resources Assigned this Period						
Strike Team / Task Force / Resource Designator		LWD	Leader	Number Persons	Drop Off PT./Time	Pick Up PT./Time
SOFR (O-127)		08/15	JONATHAN LEE	1	BACKBONE SPIKE/0600	BACKBONE SPIKE/1800
SOFR (O-177)		08/17	JOHN SPANARELLA	1	BACKBONE SPIKE/0600	BACKBONE SPIKE/1800
6. Control Operations/Work Assignments:						
Hold and mop up direct handlines. Prep for burning along Backbone Ridge.						
7. Special Instructions:						
Utilize MIST tactics. Utilize READ's for cultural and environmental resource concerns. ID helispots and drop points, get lat-longs and provide to the DIVS. Back-haul trash and excess equipment i.e. nets, swivels and ice chests to logistics. Do not post lookouts on any bed rock out cropping without first getting clearance from REAF or READ.						
FOBS assigned to SIT will be working in Branch V: M. Snyder / S. Powell						
ARCHs / REAFs will check in / out with DIVS when entering and leaving their divisions.						
8. Division/Group Communication Summary						
Function	Channel	RX Frequency N/W	RX Tone/NAC	TX Frequency N/W	TX Tone/NAC	Mode
COMMAND	3 - NIFC C10	170.4125N		165.9625N	T3-131.8	A
COMMAND	4 - NIFC C11	170.6875N		166.5750N	T3 - 131.8	A
COMMAND	5 - NIFC C28	173.5000N		165.3875N	T3-131.8	A
TACTICAL	7 - NIFC TAC 3	168.6000N		168.6000N		A
TACTICAL	8 - NIFC TAC 5	166.7250N		166.7250N		A
AIR TO GROUND	13 - A/G TAC	165.3625N		165.3625N		A
AIR TO GROUND	14 - A/G CMD	169.7250N		169.7250N		A
9. Prepared By (Resource Unit Leader)			Approved By (Planning Section Chief)		Date	Time
GARY BISHOP			DAVE GERBOTH		08/13/2020	2200

Division/Group Assignment List (ICS 204 WF)
Controlled Unclassified Information//Basic

1. Incident Name:			3.			
RED SALMON COMPLEX			Branch:		Division/Group:	
2. Operational Period: DAY			V		P	
Date/Time From: 08/14/2020 0600 FRI	Date/Time To: 08/14/2020 1800 FRI					
4. Operations Personnel						
OPERATIONS CHIEF		JAKE CAGLE		BRANCH DIRECTOR		ROBERT BERTOLINA DANIEL OBERG (T)
DIVISION/GROUP SUPERVISOR		TRAVIS STOUT KEVIN NORTON (T)		AIR ATTACK SUPERVISOR		
5. Resources Assigned this Period						
Strike Team / Task Force / Resource Designator		LWD	Leader	Number Persons	Drop Off PT./Time	Pick Up PT./Time
EMPF (O-387)		08/22	TRAVIS CRUMPACKER	1	WILLOW CREEK ICP/0600	WILLOW CREEK ICP/1800
EMTF (O-390)		08/22	MIKE HAPKE	1	WILLOW CREEK ICP/0600	WILLOW CREEK ICP/1800
REAF O-364		08/20	MICHAEL SANCHEZ	1	WILLOW CREEK ICP/0600	WILLOW CREEK ICP/1800
ARCH O-218		08/17	STEVEN SOLORIO	1	WILLOW CREEK ICP/0600	WILLOW CREEK ICP/1800
REAF O-384		08/23	ERIK RADEMACHER	1	WILLOW CREEK ICP/0600	WILLOW CREEK ICP/1800
6. Control Operations/Work Assignments:						
Construct handline, brush out trail, and prepare for firing from O/P break South along Backbone Ridge.						
7. Special Instructions:						
Utilize MIST tactics. Utilize READ's for cultural and environmental resource concerns. ID helispots and drop points, get lat-longs and provide to the DIVS. Back-haul trash and excess equipment i.e. nets, swivels and ice chests to logistics. Do not post lookouts on any bed rock out cropping without first getting clearance from REAF or READ.						
FOBS assigned to SIT will be working in Branch V: M. Snyder / S. Powell						
ARCHs / REAFs will check in / out with DIVS when entering and leaving their divisions.						
8. Division/Group Communication Summary						
Function	Channel	RX Frequency N/W	RX Tone/NAC	TX Frequency N/W	TX Tone/NAC	Mode
COMMAND	2	170.4250N		168.0750N	T3-131.8	A
COMMAND	4	170.6875N		166.5750N	T4 - 136.5	A
COMMAND	5	173.5000N		165.3875N	T3-131.8	A
TACTICAL	10	168.2500N		168.2500N		A
AIR TO GROUND	13	165.3625N		165.3625N		A
AIR TO GROUND	14	169.7250N		169.7250N		A
9. Prepared By (Resource Unit Leader)			Approved By (Planning Section Chief)		Date	Time
GARY BISHOP			DAVE GERBOTH		08/13/2020	2000

Division/Group Assignment List (ICS 204 WF)
Controlled Unclassified Information//Basic

1. Incident Name:				3.		
RED SALMON COMPLEX				Branch: VII	Division/Group: U	
2. Operational Period: DAY						
Date/Time From: 08/14/2020 0600 FRI		Date/Time To: 08/14/2020 1800 FRI				
4. Operations Personnel						
OPERATIONS CHIEF		JAKE CAGLE		BRANCH DIRECTOR		GARY MONDAY PAUL JOHNSON (O-252) LWD 8/16 (T)
DIVISION/GROUP SUPERVISOR		NICK BUNCH CHARLIE JONES / ROBERT HOYLE (T)		AIR ATTACK SUPERVISOR		
5. Resources Assigned this Period						
Strike Team / Task Force / Resource Designator		LWD	Leader	Number Persons	Drop Off PT./Time	Pick Up PT./Time
CREW - T1 - INYO IHC (C-54)		08/20	JOEL SCHILLING	20	DAMINGO SPIKE/0600	DAMINGO SPIKE/1800
CREW - T2IA - GA CHF 2 (C-41)		08/21	JOHN BARERI	20	DAMINGO SPIKE/0600	DAMINGO SPIKE/1800
CREW - T2IA - FL STATE 7 (C-40)		08/21	DAVID SECHRIST	20	DAMINGO SPIKE/0600	DAMINGO SPIKE/1800
WFM - T1 - BLACK HILLS (O-92)		08/15	LEE DUEKER	10	DAMINGO SPIKE/0600	DAMINGO SPIKE/1800
WFM - T1 - SELWAY (O-94)		08/14	JAMES WIMER	7	DAMINGO SPIKE/0600	DAMINGO SPIKE/1800
ENG - T3 - SRF 311 (E-233)		08/21	BROCK MCCULLOCH	5	DAMINGO SPIKE/0600	DAMINGO SPIKE/1800
WT - T2 - KNF 279 (E-236)		08/21	STACIE CICAISOS	2	DAMINGO SPIKE/0600	DAMINGO SPIKE/1800
DOZ - T4 - SRF (E-165)		08/19	JAKE MOORE	2	DAMINGO SPIKE/0600	DAMINGO SPIKE/1800
SKIDGEN - T2 - LET ER BUCK (E-221)		08/21	STEVE LASSEN	2	DAMINGO SPIKE/0600	DAMINGO SPIKE/1800
FALM - T1 - NORTH ZONE FALLERS (O-283)		08/18	GARY BURG	2	DAMINGO SPIKE/0600	DAMINGO SPIKE/1800
FALM - T1 - NORTH ZONE FALLERS (O-285)		08/18	JEREMY MASON	2	DAMINGO SPIKE/0600	DAMINGO SPIKE/1800
TFLD (O-458)		08/18	JAMES M SCOTT	1	DAMINGO SPIKE/0600	DAMINGO SPIKE/1800
FELB (O-275)		08/19	MARIO MARQUEZ	1	DAMINGO SPIKE/0600	DAMINGO SPIKE/1800
HEQB (O-211)		08/14	JACOB WRIGHT	1	DAMINGO SPIKE/0600	DAMINGO SPIKE/1800
EMTF (O-297)		08/19	KYLE MALLINGER	1	DAMINGO SPIKE/0600	DAMINGO SPIKE/1800
EMPF (O-290)		08/19	RYAN SWICK	1	DAMINGO SPIKE/0600	DAMINGO SPIKE/1800
SOFR (O-128)		08/19	JEFFREY KERR	1	DAMINGO SPIKE/0600	DAMINGO SPIKE/1800
6. Division/Group Communication Summary						
Function	Channel	RX Frequency N/W	RX Tone/NAC	TX Frequency N/W	TX Tone/NAC	Mode
COMMAND	3 - NIFC C10	170.4125N		165.9625N	T3-131.8	A
COMMAND	4 - NIFC C11	170.6875N		166.5750N	T3 - 131.8	A
COMMAND	5 - NIFC C28	173.5000N		165.3875N	T3-131.8	A
TACTICAL	10	154.2875N	T6-156.7	154.2875N	T6-156.7	A
AIR TO GROUND	13 - A/G TAC	165.3625N		165.3625N		A
AIR TO GROUND	14 - A/G	169.7250N		169.7250N		A
9. Prepared By (Resource Unit Leader)			Approved By (Planning Section Chief)		Date	Time
GARY BISHOP			DAVE GERBOTH		08/13/2020	2000

Division/Group Assignment List (ICS 204 WF)
Controlled Unclassified Information//Basic

1. Incident Name:		3.				
RED SALMON COMPLEX		Branch:		Division/Group:		
2. Operational Period: DAY		VII		U		
Date/Time From: 08/14/2020 0600 FRI	Date/Time To: 08/14/2020 1800 FRI					
4. Operations Personnel						
OPERATIONS CHIEF	JAKE CAGLE	BRANCH DIRECTOR		GARY MONDAY PAUL JOHNSON (O-252) LWD 8/16 (T)		
DIVISION/GROUP SUPERVISOR	NICK BUNCH CHARLIE JONES / ROBERT HOYLE (T)	AIR ATTACK SUPERVISOR				
5. Resources Assigned this Period						
Strike Team / Task Force / Resource Designator	LWD	Leader	Number Persons	Drop Off PT./Time	Pick Up PT./Time	
6. Control Operations/Work Assignments:						
Continue to improve the dozer line. Prep Pack Saddle Ridge for firing to the South. Hold and mop up fireline. Prep Red Cap Horse Trail.						
7. Special Instructions:						
Utilize MIST tactics. Utilize READ's for cultural and environmental resource concerns. ID helispots and drop points, get lat-longs and provide to the DIVS. Back-haul trash and excess equipment i.e. nets, swivels and ice chests to logistics. Do not post lookouts on any bed rock out cropping without first getting clearance from REAF or READ. Mountain Medic at DP-9						
FOBS assigned to SIT will be working in BranchVII: J. Alexion/R. Brubaker/T. Easley/A. Miyagishim						
ARCHs / REAFs will check in / out with DIVS when entering and leaving their divisions. Assigned to Branch VII:						
READ K. Colegrove REAFt C. Sloan CULS S. Caw-Tep READ B. Aubrey CULS R. Ammon ARCH N. Faust						
8. Division/Group Communication Summary						
Function	Channel	RX Frequency N/W	RX Tone/NAC	TX Frequency N/W	TX Tone/NAC	Mode
COMMAND	3 - NIFC C10	170.4125N		165.9625N	T3-131.8	A
COMMAND	4 - NIFC C11	170.6875N		166.5750N	T3 - 131.8	A
COMMAND	5 - NIFC C28	173.5000N		165.3875N	T3-131.8	A
TACTICAL	10	154.2875N	T6-156.7	154.2875N	T6-156.7	A
AIR TO GROUND	13 - A/G TAC	165.3625N		165.3625N		A
AIR TO GROUND	14 - A/G	169.7250N		169.7250N		A
9. Prepared By (Resource Unit Leader)		Approved By (Planning Section Chief)		Date	Time	
GARY BISHOP		DAVE GERBOTH		08/13/2020	2000	

Division/Group Assignment List (ICS 204 WF)
Controlled Unclassified Information//Basic

1. Incident Name:				3.		
RED SALMON COMPLEX				Branch:		Division/Group:
2. Operational Period: DAY				VII		W
Date/Time From: 08/14/2020 0600 FRI		Date/Time To: 08/14/2020 1800 FRI				
4. Operations Personnel						
OPERATIONS CHIEF JAKE CAGLE		BRANCH DIRECTOR GARY MONDAY PAUL JOHNSON				
DIVISION/GROUP SUPERVISOR ROBB BEERY (O-130) LWD 8/15		AIR ATTACK SUPERVISOR				
5. Resources Assigned this Period						
Strike Team / Task Force / Resource Designator		LWD	Leader	Number Persons	Drop Off PT./Time	Pick Up PT./Time
CREW - T2IA - SHASTA LAKE C-1		08/22	RON GRAVE	19	MILL GAP SPIKE/0600	MILL GAP SPIKE/1800
CREW - T2IA - GASC 1 C-42		08/21	TROY HELMS	20	MILL GAP SPIKE/0600	MILL GAP SPIKE/1800
CREW - T2 - GRAYBACK 9 (C-37)		08/18	JUSTIN MAY	20	MILL GAP SPIKE/0600	MILL GAP SPIKE/1800
WFM - T1 - WHISKEYTOWN O-163		08/15	JOE MILLIGAN	7	MILL GAP SPIKE/0600	MILL GAP SPIKE/1800
ENG - S/T - T3 - 4660C (E-239)		08/21	JEREMY OSTER	27	MILL GAP SPIKE/0600	MILL GAP SPIKE/1800
ENG - T6 - E MISSOULA (E-210)		08/21	TANNER FERGUSON	3	MILL GAP SPIKE/0600	MILL GAP SPIKE/1800
ENG - T6 - BIG STATE (E-213)		08/21	CHRIS TERRY	3	MILL GAP SPIKE/0600	MILL GAP SPIKE/1800
ENG - T6 - ALASKA (E-212)		08/21	MIKE CADE	3	MILL GAP SPIKE/0600	MILL GAP SPIKE/1800
WT - T2 - SHF 66 (E-234)		08/21	THADDEUS EASON	2	MILL GAP SPIKE/0600	MILL GAP SPIKE/1800
WT - S2 - TOBIASSON (E-237)		08/21	JUSTIN RHOADES	1	MILL GAP SPIKE/0600	MILL GAP SPIKE/1800
WT - S2 - HURLIMANN (E-238)		08/21	TYLER MURPHY	1	MILL GAP SPIKE/0600	MILL GAP SPIKE/1800
WT - S2 - SIERRA WATER SHUTTLE (E-29)		08/14	NATE GOOKIN	1	MILL GAP SPIKE/0600	MILL GAP SPIKE/1800
DOZ - T2 - M. PETERS (E-126)		08/18	BILL HANAM	2	MILL GAP SPIKE/0600	MILL GAP SPIKE/1800
SKG - T2 - DC FIRE E-294		08/27	ALLEN GANN	2	MILL GAP SPIKE/0600	MILL GAP SPIKE/1800
FALM - T1 - NORTH ZONE FALLERS (O-284)		08/18	TOM NEALY	2	MILL GAP SPIKE/0600	MILL GAP SPIKE/1800
TFLD (O-274)		08/22	MICHAEL GAWRONSKI	1	MILL GAP SPIKE/0600	MILL GAP SPIKE/1800
HEQB (O-278)		08/19	TRUETT CHICO	1	MILL GAP SPIKE/0600	MILL GAP SPIKE/1800
HEQB (O-281)		08/18	ZACHERY SULLIVAN	1	MILL GAP SPIKE/0600	MILL GAP SPIKE/1800
8. Division/Group Communication Summary						
Function	Channel	RX Frequency N/W	RX Tone/NAC	TX Frequency N/W	TX Tone/NAC	Mode
COMMAND	3 - NIFC C10	170.4125N		165.9625N	T3-131.8	A
COMMAND	4 - NIFC C11	170.6875N		166.5750N	T3 - 131.8	A
COMMAND	5 - NIFC C28	173.5000N		165.3875N	T3-131.8	A
TACTICAL	11 - VFIRE 26	154.3025N	T6-156.7	154.3025N	T6-156.7	A
AIR TO GROUND	13 - A/G TAC	165.3625N		165.3625N		A
AIR TO GROUND	14 - A/G CMD	169.7250N		169.7250N		A
9. Prepared By (Resource Unit Leader)			Approved By (Planning Section Chief)		Date	Time
GARY BISHOP			DAVE GERBOTH		08/13/2020	2000

Division/Group Assignment List (ICS 204 WF)
Controlled Unclassified Information//Basic

1. Incident Name:				3.		
RED SALMON COMPLEX				Branch:		Division/Group:
2. Operational Period: DAY				VII		W
Date/Time From: 08/14/2020 0600 FRI		Date/Time To: 08/14/2020 1800 FRI				
4. Operations Personnel						
OPERATIONS CHIEF		JAKE CAGLE		BRANCH DIRECTOR		GARY MONDAY PAUL JOHNSON
DIVISION/GROUP SUPERVISOR			ROBB BEERY (O-130) LWD 8/15		AIR ATTACK SUPERVISOR	
5. Resources Assigned this Period						
Strike Team / Task Force / Resource Designator		LWD	Leader	Number Persons	Drop Off PT./Time	Pick Up PT./Time
HEQB(T) (O-280)		08/20	THOMAS KROCK	1	MILL GAP SPIKE/0600	MILL GAP SPIKE/1800
EMTF (O-296)		08/19	PATRICK GARCIA	1	MILL GAP SPIKE/0600	MILL GAP SPIKE/1800
EMPF (O-358)		08/21	JARED DIEM	1	MILL GAP SPIKE/0600	MILL GAP SPIKE/1800
SOFR (O-303)		08/21	KELLY JENSEN	1	MILL GAP SPIKE/0600	MILL GAP SPIKE/1800
6. Control Operations/Work Assignments:						
Continue to prep roads and dozer line for firing operations. Secure and mop up Pack Saddle Ridge. Prepare to fire from the 31 road to Mill Creek Gap.						
7. Special Instructions:						
Utilize MIST tactics. Utilize READ's for cultural and environmental resource concerns. ID helispots and drop points, get lat-longs and provide to the DIVS. Back-haul trash and excess equipment i.e. nets, swivels and ice chests to logistics. Do not post lookouts on any bed rock out cropping without first getting clearance from REAF or READ. Mountain Medic at DP-9						
FOBS assigned to SIT will be working in BranchVII: J. Alexion/R. Brubaker/T. Easy/A. Miyagishim						
ARCHs / REAFs will check in / out with DIVS when entering and leaving their divisions. Assigned to Branch VII:						
READ K. Colegrove REAFt C. Sloan CULS S. Caw-Tep READ B. Aubrey CULS R. Ammon ARCH N. Faust						
6. Division/Group Communication Summary						
Function	Channel	RX Frequency N/W	RX Tone/NAC	TX Frequency N/W	TX Tone/NAC	Mode
COMMAND	3 - NIFC C10	170.4125N		165.9625N	T3-131.8	A
COMMAND	4 - NIFC C11	170.6875N		166.5750N	T3 - 131.8	A
COMMAND	5 - NIFC C28	173.5000N		165.3875N	T3-131.8	A
TACTICAL	11 - VFIRE 26	154.3025N	T6-156.7	154.3025N	T6-156.7	A
AIR TO GROUND	13 - A/G TAC	165.3625N		165.3625N		A
AIR TO GROUND	14 - A/G CMD	169.7250N		169.7250N		A
9. Prepared By (Resource Unit Leader)			Approved By (Planning Section Chief)		Date	Time
GARY BISHOP			DAVE GERBOTH		08/13/2020	2000

Division/Group Assignment List (ICS 204 WF)
Controlled Unclassified Information//Basic

1. Incident Name:				3.		
RED SALMON COMPLEX				Branch:		Division/Group:
2. Operational Period: DAY				VII		Y
Date/Time From: 08/14/2020 0600 FRI		Date/Time To: 08/14/2020 1800 FRI				
4. Operations Personnel						
OPERATIONS CHIEF		JAKE CAGLE		BRANCH DIRECTOR		GARY MONDAY PAUL JOHNSON
DIVISION/GROUP SUPERVISOR			DANNY BREUKLANDER		AIR ATTACK SUPERVISOR	
5. Resources Assigned this Period						
Strike Team / Task Force / Resource Designator		LWD	Leader	Number Persons	Drop Off PT./Time	Pick Up PT./Time
TEXAS CANYON HOTSHOTS IHC C-53		08/23	ANTHONY ARRIAGA	19	MILLGAP SPIKE/0600	MILL GAP SPIKE/1800
CREW - T2 - PACIFIC OASIS C-38		08/18	DEREK FINCH	20	MILLGAP SPIKE/0600	MILL GAP SPIKE/1800
ENG - S/T - T3 - 3646C E-16		08/24	WILLIAM BETTENCOURT	27	MILLGAP SPIKE/0600	MILL GAP SPIKE/1800
WT - S2 - CATTLE LACK RANCH E-17		08/23	NOLAN KILLEEN	1	MILLGAP SPIKE/0600	MILL GAP SPIKE/1800
DOZ - T2 - MOBLEY E-151		08/18	DAVID RAY	2	MILLGAP SPIKE/0600	MILL GAP SPIKE/1800
MAST - NORTHSTATE E-127		08/19	TANNER PARKS	2	MILLGAP SPIKE/0600	MILL GAP SPIKE/1800
FALM - T1 - PACIFIC RIDGELINE (O-10)		08/23	MACIEL BARDOMIANO	2	MILLGAP SPIKE/0600	MILL GAP SPIKE/1800
FALM - T1 - MOEN TIMBER O-9		08/24	MICHAEL MOEN	2	MILLGAP SPIKE/0600	MILL GAP SPIKE/1800
HEQB (O-279)		08/21	THOMAS JACKSON	1	MILLGAP SPIKE/0600	MILL GAP SPIKE/1800
EMTF (O-318)		08/22	RICHARD NETRO	1	MILLGAP SPIKE/0600	MILL GAP SPIKE/1800
EMPF (O-316)		08/22	DRAKE MARTIN	1	MILLGAP SPIKE/0600	MILL GAP SPIKE/1800
EMPF (O-385)		08/22	JOSHUA A TERRY	1	MILLGAP SPIKE/0600	MILL GAP SPIKE/1800
SOFR (O-126)		08/15	KRIS CRODDY	1	MILLGAP SPIKE/0600	MILL GAP SPIKE/1800
6. Division/Group Communication Summary						
Function	Channel	RX Frequency N/W	RX Tone/NAC	TX Frequency N/W	TX Tone/NAC	Mode
COMMAND	3 - NIFC C3	170.4125N		165.9625N	T3-131.8	A
COMMAND	4 - NIFC C10	170.6875N		166.5750N	T4 - 136.5	A
COMMAND	5 - NIFC C11	173.5000N		165.3875N	T3-131.8	A
TACTICAL	12 - R5 TAC 6	168.2375N		168.2375N		A
AIR TO GROUND	13 - A/G TAC	165.3625N		165.3625N		A
AIR TO GROUND	14 - A/G CMD	169.7250N		169.7250N		A
9. Prepared By (Resource Unit Leader)			Approved By (Planning Section Chief)		Date	Time
GARY BISHOP			DAVE GERBOTH		08/13/2020	2200

Division/Group Assignment List (ICS 204 WF)
Controlled Unclassified Information//Basic

1. Incident Name:				3.		
RED SALMON COMPLEX				Branch:		Division/Group:
2. Operational Period: DAY				VII		Y
Date/Time From: 08/14/2020 0600 FRI		Date/Time To: 08/14/2020 1800 FRI				
4. Operations Personnel						
OPERATIONS CHIEF		JAKE CAGLE		BRANCH DIRECTOR		GARY MONDAY PAUL JOHNSON
DIVISION/GROUP SUPERVISOR		DANNY BREUKLANDER		AIR ATTACK SUPERVISOR		
5. Resources Assigned this Period						
Strike Team / Task Force / Resource Designator		LWD	Leader	Number Persons	Drop Off PT./Time	Pick Up PT./Time
6. Control Operations/Work Assignments:						
Prep and improve indirect handline for firing. Scout Red Cap Creek						
7. Special Instructions:						
Utilize MIST tactics. Utilize READ's for cultural and environmental resource concerns. ID helispots and drop points, get lat-longs and provide to the DIVS. Back-haul trash and excess equipment i.e. nets, swivels and ice chests to logistics. Do not post lookouts on any bed rock out cropping without first getting clearance from REAF or READ. Mountain Medic at DP-9						
FOBS assigned to SIT will be working in BranchVII: J. Alexion/R. Brubaker/T. Easy/A. Miyagishim						
ARCHs / REAFs will check in / out with DIVS when entering and leaving their divisions. Assigned to Branch VII:						
READ K. Colegrove REAFt C. Sloan CULS S. Caw-Tep READ B. Aubrey CULS R. Ammon ARCH N. Faust						
8. Division/Group Communication Summary						
Function	Channel	RX Frequency N/W	RX Tone/NAC	TX Frequency N/W	TX Tone/NAC	Mode
COMMAND	3 - NIFC C3	170.4125N		165.9625N	T3-131.8	A
COMMAND	4 - NIFC C10	170.6875N		166.5750N	T4 - 136.5	A
COMMAND	5 - NIFC C11	173.5000N		165.3875N	T3-131.8	A
TACTICAL	12 - R5 TAC 6	168.2375N		168.2375N		A
AIR TO GROUND	13 - A/G TAC	165.3625N		165.3625N		A
AIR TO GROUND	14 - A/G CMD	169.7250N		169.7250N		A
9. Prepared By (Resource Unit Leader)			Approved By (Planning Section Chief)		Date	Time
GARY BISHOP			DAVE GERBOTH		08/13/2020	2200

NIGHT

OPERATIONS

Division/Group Assignment List (ICS 204 WF)
Controlled Unclassified Information//Basic

1. Incident Name:			3.			
RED SALMON COMPLEX			Branch:		Division/Group:	
2. Operational Period: NIGHT			NIGHT OPS		NIGHT D	
Date/Time From: 08/14/2020 1800 FRI	Date/Time To: 08/15/2020 0600 SAT					
4. Operations Personnel						
OPERATIONS CHIEF		DAVID M PEREIRA		NIGHT OPERATIONS CHIEF		JOSE GONZALES
DIVISION/GROUP SUPERVISOR		GRAHM RICE TOD FLOWERS (T)		AIR ATTACK SUPERVISOR		
5. Resources Assigned this Period						
Strike Team / Task Force / Resource Designator		LWD	Leader	Number Persons	Drop Off PT./Time	Pick Up PT./Time
CREW - T1 - PLUMAS IHC (C-4)		08/23	MIKE SHERMAN	19	RED SPIKE /1800	RED SPIKE/0600
WFM - T2 - SIX RIVERS WFM 20 (O-210)		08/16	TRISTAN KIEHL	11	RED SPIKE /1800	RED SPIKE/0600
ENG - T6 - BLM 3241 (E-194)		08/20	GEORGE CHAMBERS	3	RED SPIKE /1800	RED SPIKE/0600
ENG - T6 - BB BAR 75 (E-49)		08/14	TIM BAILEY	3	RED SPIKE /1800	RED SPIKE/0600
EMPF (O-357)		08/22	PETER LARSEN	1	RED SPIKE /1800	RED SPIKE/0600
EMTF (O-388)		08/22	NICHOLAS MORTON	1	RED SPIKE /1800	RED SPIKE/0600
SOFR O-428		08/25	GUY CHAMNESS	1	RED SPIKE /1800	RED SPIKE/0600
6. Control Operations/Work Assignments:						
Hold and patrol containment lines. Burn as needed when conditions permit.						
7. Special Instructions:						
Utilize MIST tactics. Utilize READ's for cultural and environmental resource concerns. ID helispots and drop points, get lat-longs and provide to the DIVS. Back-haul trash and excess equipment i.e. nets, swivels and ice chests to logistics. Do not post lookouts on any bed rock out cropping without first getting clearance from REAF or READ. **ARCHs / REAFs** will check in / out with DIVS when entering and leaving their divisions.						
8. Division/Group Communication Summary						
Function	Channel	RX Frequency N/W	RX Tone/NAC	TX Frequency N/W	TX Tone/NAC	Mode
COMMAND	3 - NIFC C10	170.4125N		165.9625N	T3-131.8	A
COMMAND	4 - NIFC C11	170.6875N		166.5750N	T3 - 131.8	A
COMMAND	5 - NIFC C28	173.5000N		165.3875N	T3-131.8	A
TACTICAL	8 - VTAC 12	154.4525N	T6-156.7	154.4525N	T6-156.7	A
AIR TO GROUND	13 - A/G TAC	165.3625N		165.3625N		A
AIR TO GROUND	14 - A/G	169.7250N		169.7250N		A
9. Prepared By (Resource Unit Leader)			Approved By (Planning Section Chief)		Date	Time
JEREMY CAMACHO			DAVE GERBOTH		08/13/2020	2200

Division/Group Assignment List (ICS 204 WF)
Controlled Unclassified Information//Basic

1. Incident Name:			3.			
RED SALMON COMPLEX			Branch:		Division/Group:	
2. Operational Period: NIGHT			NIGHT OPS		NIGHT W	
Date/Time From: 08/14/2020 1800 FRI	Date/Time To: 08/15/2020 0600 SAT					
4. Operations Personnel						
OPERATIONS CHIEF DAVID M PEREIRA		NIGHT OPERATIONS CHIEF JOSE GONZALES				
DIVISION/GROUP SUPERVISOR KEITH RANKIN SMITH LWD 8/24		AIR ATTACK SUPERVISOR				
5. Resources Assigned this Period						
Strike Team / Task Force / Resource Designator	LWD	Leader	Number Persons	Drop Off PT./Time	Pick Up PT./Time	
C-55 FEATHER RIVER IHC	08/28		20	SALMON SPIKE/0600	SALMON SPIKE/1800	
ENG - T6 - YNP -- E691 E-209	08/22	ZAC ALLEN	5	SALMON SPIKE/0600	SALMON SPIKE/1800	
ENG - T6 - OR-COC 636 E-211	08/21	CREED PENDELTON	4	SALMON SPIKE/0600	SALMON SPIKE/1800	
SOFR O-428	08/25	GUY CHAMNESS	1	SALMON SPIKE/0600	SALMON SPIKE/1800	
6. Control Operations/Work Assignments:						
Continue to hold Pack Saddle Ridge and prepare to burn North towards 31 Road. Construct handline from 32 road to Red Cap Peak.						
7. Special Instructions:						
Utilize MIST tactics. Utilize READ's for cultural and environmental resource concerns. ID helispots and drop points, get lat-long's and provide to the DIVS. Back-haul trash and excess equipment i.e. nets, swivels and ice chests to logistics. Do not post lookouts on any bed rock out cropping without first getting clearance from REAF or READ. Mountain Medic at DP-9						
ARCHs / REAFs will check in / out with DIVS when entering and leaving their divisions.						
8. Division/Group Communication Summary						
Function	Channel	RX Frequency N/W	RX Tone/NAC	TX Frequency N/W	TX Tone/NAC	Mode
COMMAND	3 - NIFC C10	170.4125N		165.9625N	T3-131.8	A
COMMAND	4 - NIFC C11	170.6875N		166.5750N	T3 - 131.8	A
COMMAND	5 - NIFC C28	173.5000N		165.3875N	T3-131.8	A
TACTICAL	11 - VFIRE 26	154.3025N	T6-156.7	154.3025N	T6-156.7	A
AIR TO GROUND	13 - A/G TAC	165.3625N		165.3625N		A
AIR TO GROUND	14 - A/G CMD	169.7250N		169.7250N		A
9. Prepared By (Resource Unit Leader)			Approved By (Planning Section Chief)		Date	Time
JEREMY CAMACHO			DAVE GERBOTH		08/13/2020	2200

**AIR OPERATIONS SUMMARY
DAY/NIGHT
ICS 220**

Prepared By: Galen Young

Prepared Date: 8/13/20

Prepared Time: 1700

1. INCIDENT NAME: Red Salmon Complex	2. OPS PERIOD DATE: 8/14/20	START TIME: 0700	END TIME: 2100	SUNRISE: 0621	SUNSET: 2023
--------------------------------------	-----------------------------	------------------	----------------	---------------	--------------

3. REMARKS (Safety Notes, Hazards, Air Operations Special Equipment, etc.): Track all dipsite locations/number of dips/gallons taken. Track all drop locations/number of drops/gallons dropped. All GPS data to be collected in DEGREES, MINUTES, DECIMAL MINUTES format. AVOID Aerial Application of Retardant/Foam/Agent within 300' of Waterways, Bodies of Water, etc. AERIAL AVOIDANCE ZONE: 1/2 MILE RADIUS INDIAN ROCKS. if Retardant/Foam/Agent is dropped within these areas immediately notify the AOBD and provide the following information: Lat/Long, estimated number of gallons and a map detailing the area.
Fly with Transponder 1255.
CAUTION POWERLINES and SMOKE.
Dip Sites: River Dip, Heliwell, Blacks Lake Dip

4. Helibase Information:
 Willow Creek Helibase:
 40° 57.036
 123° 38.164
 Weaverville Helibase
 40° 44.46
 122° 55.21
 Scott Valley Helibase
 41° 33.40
 122° 51.20

5. TFR's: 0/1313
 Latitude: 41°09'54"
 Longitude: 123°23'30"
 10NM Radius
 Altitude: 12,000' MSL
 Frequency: 121.1750
 http://tfr.faa.gov

6. PERSONNEL	NAME	PHONE #	7. FREQUENCIES	RX	TX	8. MEDIVAC SHIP INFORMATION
AOBD	Galen Young	575-574-8720	AIR TACTICS	169.2000	169.2000	Day: Night:
ASGS ASGS (T)	Jim Stratton Michael Lewton	760-207-4325 520-604-6287	ROTOR VICTOR	121.1750	121.1750	Name:
Willow Creek Helibase	Lee Stewart HEB Neil Dresser HEB(T)	949-614-6127	SRF RPTR	172.3750	164.1750 (T5) 146.2	H-102 DAY HOIST ON REQUEST KNEELAND
Weaverville Helibase	Thomas Kennedy HEB	562-619-6492	DECK	163.1000	163.1000	CHP- H-16 REDDING DAY/ HOIST
Scott Valley Helibase	Natalie Bench HEB Dan Fairchild HEB(T)	530-468-1294	AIR TO GROUND TACTICAL	165.3625	165.3625	
ATGS/HLCO H-507	Eric Haskins	909-659-5233	AIR TO GROUND COMMAND	169.7250	169.7250	
HLCO 7RL	Jerry Messinger	541-306-0907	CMD Link NIFC C-3 Willow	170.4250	168.0750 (T3) 131.8	
ATGS/HLCO H-503	Dave Phillips	209-770-0904	CMD Link NIFC C-11 Fire	170.6875	166.5750 (T3) 131.8	
AA-4CT	Jason Withrow	530-206-6955	CMD Link NIFC C-28 Fire	173.5000	165.3875 (T3) 131.8	
			BRIEFING VICTOR	125.1750	125.1750	
Kneeland CALFIRE Helitack	James Beeson	707-444-2863	CALCORD	156.0750 (T6) 156.7	156.0750 (T6) 156.7	
	huu.kneelandhelitack base@fire.ca.gov		AIR GUARD	168.6250	168.6250 (T1) 110.9	

HELICOPTERS

FAA #	T	MAKE/MODEL	BASE	START	AVAIL	REMARKS	FAA #	T	MAKE/MODEL	BASE	START	AVAIL	REMARKS
1CG	1	S-61	Weaver	0630	0700		H-502	2	Bell 205	Scott Valley	0630	0700	EU
1HT	1	S-64	Weaver	0730	0800		H-69H	2	Bell 205	Willow	0700	0730	EU RAPPELL
1AJ	1	Chinook	Weaver	0730	0800		H-516	2	Bell 212HP	Willow	0800	0830	EU
0CD	1	UH-60	Scott Valley	0800	0830		H-517	2	Bell 205	Weaver	0630	0700	EU
1048Y	1	S-61	Scott Valley	0800	0830		H-503	3	Bell 407	Willow	0800	0830	EU
HT-917	1	S-61	Willow	0800	0830		H-7RL	3	Bell 407	Weaver	0630	0700	HLCO Only
							H-507		Cobra	Scott Valley	0730	0800	ATGS
							H-9PJ	3	Bell 407	Weaver	0730	0800	Short Haul / BLS
							N617AC	3	Bell 407	Willow	0730	0800	IR/Recon

UAS / FIXED WING

4CT		Aero Commander 500-S	RDD	0800	0830	ATGS	UR33 UR34	3 3	M-600 M-600	Orleans Orleans	0800 0800	0830 0830	PSD/IR PSD/IR
UR31	3	M-600	Willow	0800	0830	PSD/IR	UR320	3	M-600	Weaver	0800	0830	PSD/IR
UR41	4	Mavic	Willow	0800	0830	PSD/IR	UR417	4	Mavic	Willow	0800	0830	PSD/IR

Missions:	Aircraft	AVAIL	Departure Point	Destination
ATGS/HLCO	507,503 4CT,7RL	0700	Weaver, Willow, Scott Valley, RDD	Fire
Bucket Support	ALL	0700	Willow, Scott Valley, Weaverville	Fire
RECON	T-3	0800	Willow	Fire
Retardant	TBD	TBD	TBD	TBD
MEDIVAC	9PJ	0800	Weaverville	As requested
Repeater	T2, T-3	0800	Willow	As requested
Rapellers	T2	0800	Willow	TBD
Initial Attack	TBD	0800	Willow	TBD
PSD	T-3		Willow	Fire

Provide Tactical Aerial Support

Water dropping requested by Ops, Branch, Division or Air Attack

As requested. Coordinate requests with AOBD.

On request: Check application avoidance areas READ approval required.

Request through Red Salmon Communications on Command Repeater.
Give location: lat/long if known, and current visibility. Check Medical Plan/IAP.

As requested.

Provide IA Helitack and loan copters on request.

When available as requested through Ops

Red Salmon Complex – Safety Message

INCIDENT # CA-SRF-000656

DATE: 08-14/15-2020 TIME: 0600-0600 Day/Night Shift

“SAFETY is a **CORE VALUE** to be integrated into **ALL** incident activities”

See Something Say Something, Communicate Safety!

- **Take Charge** of assigned resources.
- **Motivate** firefighters with a “can do safely” attitude.
- **Demonstrate Initiative** by taking action in the absence of orders.
- **Communicate** by giving specific instructions and asking for feedback!
- **Supervise** at the scene of the action.

Leaders Set The Example

All leaders of firefighters have the responsibility to provide a model their subordinates will emulate and follow. You should:

- Share the hazards and hardships with your subordinates.
- A positive attitude is infectious.
- Don't show discouragement when facing setbacks.
- Choose the difficult right over the easy wrong.
- Provide “Leaders Intent”.

COVID-19 Incident Stats to Date

Symptomatic Tested: 5
Number Positive Cases: 0

Driving

- When driving keep the speed at or below the posted speed limit and turn your headlights on. Is the posted speed limit a safe speed under the current conditions and traffic?
- **Use caution on unimproved roads as some have soft shoulders. Some roads are also only one lane with pullouts!**
- Road surfaces are variable with washboard conditions and thick dust that can compromise turning and braking.
- Watch for and anticipate stock and wildlife especially from dusk to dawn.
- Always fasten your seat belt before the vehicle is set into motion. Use backsters.
- Don't tail gate, especially in dusty conditions.
- **Slow down, slow down, and slow down!**

Hazard Tree Indicators

- Tree burning for any period of time.
- High risk tree species (rot and shallow roots).
- Numerous downed trees.
- Dead, broken, or burning tops and limbs overhead.
- Accumulation of needles, bark, or limbs.
- Leaning or hung-up trees.


Eliminate the hazards with qualified sawyers and modify suppression tactics or fireline location to avoid high risk areas. Always provide timely feedback to others regarding any hazard trees.

Prepared by,
Team 4 Safety Group



INCIDENT RISK ANALYSIS RED SALMON COMPLEX CA-SRF-000656 (ICS 215a) Day/Night Shift

DIV/BR	HAZARDOUS ACTIONS / CONDITIONS	MITIGATIONS / WARNINGS / REMEDIES
ALL	TRAFFIC HAZARDS AND DRIVING	<ul style="list-style-type: none"> • Many roads are narrow and mid-slope, with soft shoulders. Allow heavy vehicles to pass on uphill side. Use spotters when backing, or turning around. • Practice "Defensive Driving" techniques. Assume other drivers are fatigued and complacent. • 5mph speed limit in and around ICP, keep your speed down in all areas. • Use warning lights when working on roads or traveling in smoke/low visibility. • Drive at or below posted speed limits. • Use chock blocks, turn wheels into hill. • Be alert for wildlife.
ALL	HAZARD / DANGER TREES	<ul style="list-style-type: none"> • Follow Hazard Tree Safety Guidelines (IRPG p.22.) • Limit number of personnel around snags and their exposure time; fallers must be qualified for the trees being felled. • Be alert around hazard trees during wind events, even green trees. • The hazard zone extends a minimum of 2½ tree lengths. • Do not park vehicles or take breaks under or near hazard trees.
ALL	STEEP TERRAIN AND ROLLING DEBRIS	<ul style="list-style-type: none"> • Maintain 8'-10' spacing when working & walking. • Be alert for rolling rocks, debris, or burning material. • Evaluate necessity to send personnel in areas with limited access. • Post lookouts where feasible.
ALL	FATIGUE/COMPLACENCY	<ul style="list-style-type: none"> • Be alert for signs of fatigue and take breaks as necessary. • Maintain 2:1 work/rest ratio. • Monitor ALL resources for level of fatigue. • Repeated assignments in the same area can lead to complacency making personnel more vulnerable to accidents. • Take steps to maintain situational awareness for the duration of the incident.
ALL	FIRING OPERATIONS and DEVICES	<ul style="list-style-type: none"> • Follow the chain of command when undertaking burning operations. • Ensure that aerial/ground ignition plans have been well briefed including LCES and drought related fire behavior considerations. • Wear and use appropriate PPE. • Initiate burning after ensuring the plan is authorized and understood by all.
ALL	HEAVY EQUIPMENT OPERATIONS	<ul style="list-style-type: none"> • Ensure communications are established with operators. • Avoid working downslope from heavy equipment. • Maintain a 50'-150' exclusion area around equipment. • In timber increase safety distance to 2 ½ times canopy height.
ALL	COMMUNICATIONS	<ul style="list-style-type: none"> • Share your Situational Awareness (hazards, changes, etc) to those who have a need. • Radio communications may be poor in some areas. Use human repeaters as needed • Ensure all personnel are familiar with the incident communications plan.
ALL	NIGHT OPERATIONS	<ul style="list-style-type: none"> • Have a purpose for where you drive and what you do. Don't rush into assignments. • Use caution where you park or stage, especially in steep timbered areas. • Use available time for briefings on roads, terrain, and potential rolling material, especially if the resources are new to the area. • Increase SA by trying to see the work area during daylight hours. • Use glow sticks to mark hazards, and ensure personnel have headlamps.
ALL	AIR OPERATIONS	<ul style="list-style-type: none"> • Follow "Aviation Watch-Out Situations" on page 46, IRPG. • Don't plan on air resources for tactical support or medical transportation. • Refer to page 58, IRPG for directing bucket drops. • Ensure positive communication with all air resources.
ALL	HEAT RELATED ILLNESS	<ul style="list-style-type: none"> • Drink 2 to 1 water to sports drinks. • Take frequent breaks, minimum of 10 minutes every hour. • Recognize symptoms of HEAT RELATED ILLNESS which include low energy, headaches, dizziness, poor rest, poor eating habits, hot skin, and lack of sweating.
ALL	COVID-19	<ul style="list-style-type: none"> • Utilize social distancing, wear facemasks in camp ALWAYS. • Maintain the "module of one" concept. • Disinfect vehicles, tools, and commonly touched surfaces frequently. • Do not share equipment and wash hands frequently.

<p style="text-align: center;">INCIDENT NAME:</p> <h2 style="text-align: center;">Red Salmon Complex</h2>	<p style="text-align: center;">Operational Period: 0600-0600</p> <h2 style="text-align: center;">August 14-15, 2020</h2> <p style="text-align: center;">DATE AND TIME PREPARED: August 13, 2020 1600 Hours</p>	
---	--	---




1. Incident Name	2. Operational Period
Red Salmon Complex	Date/Time: 08/14/20-8/15/20 (0600-0600)

3. EMS / Ambulance Services/Aid Stations/REMS				
Name	Location	Frequency/Phone	Advanced Life Support (ALS)	
			Yes	No
Mountain Medics Medical Supply Trailer	Orleans Camp	Walk-up Medical Supplies and Treatment	RN	
Mountain Medics #1 4x4 ALS Ambulance (24 hours)	Mill Gap Spike/DP #9	Command	X	
Mountain Medics #4 4x4 ALS Ambulance (24 hours)	Salmon Spike	Command	X	
Mountain Medics #5 4x4 ALS Ambulance	Red Spike	Command	X	
Hoopa Ground Ambulance	Willow Creek, CA	CAL Fire Fortuna ECC	X	
Rapid Extraction Module Support (REMS)	Rems 6 – Branch I Fairfield REMS – Branch V Rems 19 – Branch VII	Command	X	

4. Air Rescue / Air Ambulance Services		
Name	Location	Type of Aircraft & Capability
H-9PJ	Weaverville Helibase	Order via command Short Haul, BLS (ETA 20 min)
Reach 5	Redding	Order via CAL Fire Fortuna ECC, ALS Day & Night (ETA 30 min)
Cal Fire H102	Kneeland	Order via CAL Fire Fortuna ECC, BLS Day only (ETA 40 min)
CHP H14/H15	Redding	Order via CAL Fire Fortuna ECC, Hoist Day (ETA 30 min)
Coast Guard	Eureka	Order via CAL Fire Fortuna ECC, BLS, Hoist, Short Haul, Night Vision (ETA 30 min)

5. Hospitals (all times estimated from incident location)								
Name & Level	GPS Datum – WGS 84 Degrees Decimal Minutes		Travel Time (from Orleans)		Phone	Helipad		Address
	Lat:	Long:	Air	Gnd		Yes	No	
St Joseph's Hospital (Level 3)	N 40° 47.0333'	W 124° 08.800'	30 MINS	2 HRS	707-269-3605 ext 2000	X		2700 Dolbeer St Eureka, CA
Fairchild Medical Center (Level 4)	N 41° 43.14'	W 122° 38.74'	30 MINS	2.5 HRS	530-841-6292	X		444 Bruce Street Yreka, CA
Mad River Cmty. Hospital (Level 4)	N 40° 53.72	W 124° 06.45	20 MINS	1.75 HRS	707-826-8264 EXT 1	X		3800 James Rd. Arcata, CA
Mercy Medical Center (Level II)	N 40° 34.33	W 122° 23.80	30 MINS	3 HRS	530-225-7200	X		2175 Rosaline Ave. Redding CA
U.C. Davis Medical Center Level 1 Trauma/Burn	N 38° 33.32	W 121° 27.35	2 HRS	5.5 HRS	916-703-6576	X		2315 Stockton Blvd. Sacramento, CA.

6. Division / Crew Emergency Pre-Plan		<i>Update and discuss with assigned resources daily.</i>	
Fireline EMT / Medic's Division / Branch Location			
Air Hoist site location site: Lat: / Long: / Elevation:			
Helispot: Lat: / Long: / Elevation:			
MED LZ:			

7. Prepared By (Medical Unit Leader)	8. Date/Time	9. Reviewed By (Safety Officer)	10. Date/Time
MEDL Doug Stuart  MEDL(t) Mike Harris 	8/13/2020 1800	SOF1 	8/13/2020 1800



Medical Incident Report

FOR A NON-EMERGENCY INCIDENT, WORK THROUGH CHAIN OF COMMAND TO REPORT AND TRANSPORT INJURED PERSONNEL AS NECESSARY.

FOR A MEDICAL EMERGENCY: IDENTIFY ON SCENE INCIDENT COMMANDER BY NAME AND POSITION AND ANNOUNCE "MEDICAL EMERGENCY" TO INITIATE RESPONSE FROM IMT COMMUNICATIONS/DISPATCH.

Use the following items to communicate situation to communications/dispatch.

1. CONTACT COMMUNICATIONS / DISPATCH (Verify correct frequency prior to starting report)

Ex: "Communications, Div. Alpha. Stand-by for Emergency Traffic."

2. INCIDENT STATUS: Provide incident summary (including number of patients) and command structure.

Ex: "Communications, I have a Red priority patient, unconscious, struck by a falling tree. Requesting air ambulance to Forest Road 1 at (Lat./Long.) This will be the Trout Meadow Medical, IC is TFLD Jones. EMT Smith is providing medical care."

Severity of Emergency / Transport Priority	<input type="checkbox"/> RED / PRIORITY 1 Life or limb threatening injury or illness. Evacuation need is IMMEDIATE <i>Ex: Unconscious, difficulty breathing, bleeding severely, 2° – 3° burns more than 4 palm sizes, heat stroke, disoriented.</i>	
	<input type="checkbox"/> YELLOW / PRIORITY 2 Serious Injury or illness. Evacuation may be DELAYED if necessary. <i>Ex: Significant trauma, unable to walk, 2° – 3° burns not more than 1-3 palm sizes.</i>	
	<input type="checkbox"/> GREEN / PRIORITY 3 Minor Injury or illness. Non-Emergency transport <i>Ex: Sprains, strains, minor heat-related illness.</i>	
Nature of Injury or Illness & Mechanism of Injury		Brief Summary of Injury or Illness <i>(Ex: Unconscious, Struck by Falling Tree)</i>
Transport Request		Air Ambulance / Short Haul/Hoist Ground Ambulance / Other
Patient Location		Descriptive Location & Lat. / Long. <i>(WGS84)</i>
Incident Name		Geographic Name + "Medical" <i>(Ex: Trout Meadow Medical)</i>
On-Scene Incident Commander		Name of on-scene IC of incident within an incident <i>(Ex: TFLD Jones)</i>
Patient Care		Name of Care Provider <i>(Ex: EMT Smith)</i>

3. INITIAL PATIENT ASSESSMENT: Complete this section for each patient as applicable (start with the most severe patient)

Patient Assessment: See IRPG PAGE 106

Treatment:

4. TRANSPORT PLAN:

Evacuation Location (if different): (Descriptive Location (drop point, intersection, etc.) or Lat. / Long.) Patient's ETA to Evacuation Location:

Helispot / Extraction Site Size and Hazards:

5. ADDITIONAL RESOURCES / EQUIPMENT NEEDS:

Example: Paramedic/EMT, Crews, Immobilization Devices, AED, Oxygen, Trauma Bag, IV/Fluid(s), Splints, Rope rescue, Wheeled litter, HAZMAT, Extraction

6. COMMUNICATIONS: Identify State Air/Ground EMS Frequencies and Hospital Contacts as applicable

Function	Channel Name/Number	Receive (RX)	Tone/NAC *	Transmit (TX)	Tone/NAC *
COMMAND					
AIR-TO-GRND					
TACTICAL					

7. CONTINGENCY:

Considerations: If primary options fail, what actions can be implemented in conjunction with primary evacuation method? Be thinking ahead.

8. ADDITIONAL INFORMATION: Updates/Changes, etc.

REMEMBER: Confirm ETA's of resources ordered. Act according to your level of training. Be Alert. Keep Calm. Think Clearly. Act Decisively.

Follow up with MEDL upon return to ICP



INCIDENT RADIO COMMUNICATIONS PLAN (ICS 205)

Controlled Unclassified Information//Basic

1. Incident Name: **RED SALMON COMPLEX Branch I / Branch VII North** 2. Date/Time Prepared: **08/13/2020 1102** 3. Operational Period: **DAY**

Date: **08/13/2020** Date/Time From: **08/14/2020 0600** Date/Time To: **08/14/2020 1800**
 Time: **1102** TX Tone/NAC: **FRI** FRI


Zone Group	Ch #	Function	Channel Name/Trunked Radio System Talkgroup	Assignment	RX Freq	RX Tone/NAC	TX Freq	TX Tone/NAC	Mode (A, D, or M)	Remarks
15	1	COMMAND	SRF - 2	ALL DIVS	172.3750N		164.1750N	T5	A	TONE 5 ORLEANS 146.2,
15	2	COMMAND	NIFC C3	ICP, BR VI	170.4250N		168.0750N	T3-131.8	A	BRUSH MOUNTAIN LOOKOUT - TONE 3
15	3	COMMAND	NIFC C10	ALL DIVS	170.4125N		165.9625N	T3-131.8	A	SHELTON BUTTE - TONE 3
15	4	COMMAND	NIFC C11	ALL DIVS	170.6875N		166.5750N	T3-131.8	A	ORLEANS LOOKOUT - TONE 3
15	5	COMMAND	NIFC C28	ALL DIVS	173.5000N		165.3875N	T3-131.8	A	PACK SADDLE RIDGE - TONE 3
15	6	TACTICAL	NIFC TAC 2	FOR IA WITHIN TFR	168.2000N		168.2000N		A	NIFC TAC 2
15	7	TACTICAL	VTAC 11	DIV A	151.1375N	T6-156.7	151.1375N	T6-156.7	A	VTAC 11
15	8	TACTICAL	VTAC 12	DIV D	154.4525N	T6-156.7	154.4525N	T6-156.7	A	VTAC 12
15	9	TACTICAL	VTAC 13	DIV K	158.7375N	T6-156.7	158.7375N	T6-156.7	A	VTAC 13
15	10	TACTICAL	VFIRE 25	RED CONT./DIV R/U	154.2875N	T6-156.7	154.2875N	T6-156.7	A	VFIRE 25
15	11	TACTICAL	VFIRE 26	DIV W	154.3025N	T6-156.7	154.3025N	T6-156.7	A	VFIRE 26
15	12	TACTICAL	R5 TAC 6	DIVS Y	168.2375N		168.2375N		A	R5 TAC 6
15	13	AIR TO GROUND	A/G TAC	ALL DIVS	165.3625N		165.3625N		A	AIR/GROUND TACTICAL
15	14	AIR TO GROUND	A/G COMMAND	ALL DIVS	169.7250N		169.7250N		A	AIR/GROUND COMMAND
15	15	TACTICAL	CALCORD	ALL DIVS	156.0750N	T6-156.7	156.0750N	T6-156.7	A	MEDEVAC COORDINATION - TONE 6
15	16	AIR GUARD	AIR GUARD	ALL DIVS	168.6250N		168.6250N	T1-110.9	A	TONE ON TRANSMIT ONLY - URGENT AIRCRAFT CONTACT

5. Special Instructions: **Clone for legacy non-commander radios only. August 14, 2020**

6. Prepared By: **(Communications Unit Leader)** Name: **SAL BONILLA JR, KEVIN JANES, COML 530-629-1654** Signature: *[Handwritten Signature]*
 ICS 205 IAP Page Date/Time: **08/13/2020 1102** Date/Time: **08/13/2020 1102**

INCIDENT RADIO COMMUNICATIONS PLAN (ICS 205)

Controlled Unclassified Information//Basic

1. Incident Name: RED SALMON COMPLEX Branch V / Branch VII South		2. Date/Time Prepared: Date: 08/13/2020 Time: 1102		3. Operational Period: DAY		Date/Time To: 08/14/2020 1800 FRI					
4. Basic Radio Channel Use:											
Zone Group	Ch #	Function	Channel Name/Trunked Radio System Talkgroup	Assignment	RX Freq	RX Tone/NAC	TX Freq	TX Tone/NAC	Mode (A, D, or M)	Remarks	
15	1	COMMAND	SRF - 2	ALL DIVS	172.3750N		164.1750N	T13	A	T13 HORSE 141.3	
15	2	COMMAND	NIFC C3	ICP	170.4250N		168.0750N	T3-131.8	A	BRUSH MOUNTAIN LOOKOUT - TONE 3	
15	3	COMMAND	NIFC C10	ALL DIVS	170.4125N		165.9625N	T3-131.8	A	SHELTON BUTTE - TONE 3	
15	4	COMMAND	NIFC C11	ALL DIVS	170.6875N		166.5750N	T3-131.8	A	ORLEANS LOOKOUT - TONE 3	
15	5	COMMAND	NIFC C28	ALL DIVS	173.5000N		165.3875N	T3-131.8	A	PACK SADDLE RIDGE - TONE 3	
15	6	TACTICAL	NIFC TAC 2	FOR IA WITHIN TFR	168.2000N		168.2000N		A	NIFC TAC 2	
15	7	TACTICAL	NIFC TAC 3	DIV M/N/O	168.6000N		168.6000N		A	NIFC TAC 3	
15	8	TACTICAL	NIFC TAC 5	DIV M/N/O	166.7250N		166.7250N		A	NIFC TAC 5	
15	9	TACTICAL	NIFC TAC 6	LONG CONT.	166.7750N		166.7750N		A	NIFC TAC 6	
15	10	TACTICAL	NIFC TAC 7	DIV P	168.2500N		168.2500N		A	NIFC TAC 7	
15	11	TACTICAL	R5 TAC 4	SALMON CONT	166.5500N		166.5500N		A	R5 TAC 4	
15	12	TACTICAL	R5 TAC 5	TRINITY CONT	167.1125N		167.1125N		A	R5 TAC 5	
15	13	AIR TO GROUND	AVG TAC	ALL DIVS	165.3625N		165.3625N		A	AIR/GROUND TACTICAL	
15	14	AIR TO GROUND	AVG COMMAND	ALL DIVS	169.7250N		169.7250N		A	AIR/GROUND COMMAND	
15	15	TACTICAL	CALCORD	ALL DIVS	156.0750N	T6-156.7	156.0750N	T6-156.7	A	MEDEVAC COORDINATION - TONE 6	
15	16	AIR GUARD	AIR GUARD	ALL DIVS	168.6250N		168.6250N	T1-110.9	A	TONE ON TRANSMIT ONLY - URGENT AIRCRAFT CONTACT	
5. Special Instructions: Clone for legacy non-commander radios only. August 14, 2020											
6. Prepared By (Communications Unit Leader)				Name: SAL BONILLA JR, KEVIN JANES COM1 530-629-1654				Signature: 		Date/Time: 08/13/2020 1702	
ICS 205				IAP Page							

***Red Salmon Complex
Phone List***

Check In/Demob	1-530-629-1679
Communications	1-530-629-1654
Comm Techs	1-530-629-1648
Comp Claims	1-530-539-4552
Equipment Time	1-530-629-1678
Finance	1-530-629-1677
Incident Commander	1-530-629-1644
Incident Meteorologist	1-240-778-5287
Medical Orleans Camp	1-530-906-6964
Medical Willow Creek Camp	1-530-629-1661
Operations	1-530-629-1664
Ordering	1-530-629-1674
PIO	1-530-316-1042
Plans	1-530-629-1668
Safety: Orleans Jeff Hammes (cell #)	1-208-313-7770
Safety: Willow Creek	1-530-629-1663
Security	1-323-842-3046
Training	1-707-298-1805

ANY UPDATES OR CHANGES PLEASE CALL COMMUNICATIONS

**08/13/20
MLN**




Red Salmon Complex
Friday August 14, 2020

HUMAN RESOURCE MESSAGE

Respect

The picture tells the story.

RESPECT IN THE WORK PLACE



- * Take pride in your work
- * Respect authority
- * Be a team player
- * Listen and learn
- * Share ideas
- * Agree to disagree
- * Be courteous

Be safe ~ Have a great shift.

Feel free to call/text or come by the HRSP trailer if you have questions, concerns, or just want to chat. ~ HRSP: Adam Alvarez – (707) 373-8715

Training Message

Red Salmon Complex

August 14, 2020

**“Tell me and I forget, teach me and I may remember,
involve me and I learn.” – Benjamin Franklin**

If you are new to the incident, please use the QR code below to check into the training data base. We are trying to go electronic to reduce our direct social contact.

Once you have checked in, all I need is a copy of your performance evaluation and exit interview at the end of your training assignment.

Let me know a few days before you demob and I can send you the appropriate forms to match your trainee position and the exit interview.

If you have any questions, please contact me.

Thank You,

Nick Balent
TNSP (t)
707.298.1805
nicholas.balent@usda.gov



STANDARD OPERATING PROCEDURES—FINANCE SECTION

WORK REST CYCLE

IT IS NATIONAL DIRECTION TO MEET 2 TO 1 WORK/REST RATIO (1 hour of sleep/rest for every 2 hours of work). Every effort shall be made to manage work hours so you don't exceed the maximum of 16 hrs. Work hours exceeding 16 hours shall be approved by your supervisor in advance, and a justification/mitigation form completed for review by Section Chief & approved by IC. It is each person's responsibility to comply with this direction to manage for fatigue and safety.

OPERATIONAL SHIFTS

Pay status for assigned overhead and crews on the fireline will not start prior to the posted briefing time and will terminate on arrival back in camp (except for debriefing—additional hours may be accrued by those required to attend debriefing). Supervisors will be allowed ½ hour prior to briefing and after return to camp to ready crew and equipment.

DUTY STATUS

Division/Group supervisors and Unit Leaders are responsible for establishing on and off duty status. The objective is a 2 to 1 work/rest ratio. Personnel will normally work, travel, and/or be placed on ORDERED standby 8 to 16 hours per day and be off duty 8 hours or more (breaks count towards 8 hrs.). Off duty time will be in a non-pay status. Each federal employee is guaranteed **at least 8 hours** of pay status each 24-hour period (midnight to midnight) unless it is the first or last day of an assignment or stated otherwise in a contract or agreement.

PERSONNEL/EQUIPMENT TIME REPORTING

Personnel time will be reported to the Time Unit daily or every other day once they are signed by the next level supervisor. Situations entitling you to HAZARD PAY are to be noted in remarks (i.e. HP=Uncontrolled Fireline, hovering hookups, low level flights, etc.)

Private Contracted Equipment time must be tracked on a Shift Ticket daily or every other day and hours on shift noted even if it is a daily rate. When swapping out operators you need to notify Finance as well as changing from single to double shift and vice versa.

Supervisor's - If you are responsible for daily tracking of equipment or personnel, please ensure you understand the agreement, and follow the rules provided in this document. Do not sign documents for resources you did not manage unless you have knowledge of their assignment hours.

MEAL AND OTHER WORK BREAKS

Compensable meal periods are the exception, not the rule (5 CFR 551.411 © and 29 CFR 785.19(a)). **Until the fire is controlled**, personnel on the fireline **MAY BE** compensated for meal periods if all of the following conditions are met: 1) The fire is not controlled and 2) The Operations Section Chief makes a decision that it is critical to the effort of controlling the fire that personnel remain at their post of duty and continue to work as they eat, and 3) The compensable meal break is approved by the supervisor at the next level and documented on CTR. For personnel in support positions, and fireline personnel **after control** of a fire, a meal period of at least 30 minutes must be ordered and taken for each work shift of eight hours or more. In those situations where personnel cannot be relieved from work and must remain at a post of duty, a meal period may be counted as time worked, which will be compensable. **If breaks are NOT able to be taken, CTR should have a statement in remarks explaining the situation.**

RED SALMON DEMOB PROCESS

Steps for the Demob Process. Note this is a paperless process. If you have difficulties with your phone or need help, please ask the person in the Check-in / Demob tent or call 530-629-1679. This includes those who do not have a smartphone.

Demob Process



Go to the following locations where the Unit Leader will electronically sign off on your demob:

- ORLEANS GROUND SUPPORT *****(Do this prior to Weed Wash)*****
- WEED WASH
- SUPPLY
- COMMUNICATIONS
- TIME (LAST)

Contact Finance at the listed numbers to ensure all shift tickets and CTR's are completed:
Equipment Time (530) 629-1678, Personnel Time (530) 629-1675

*****RESOURCES TRAVELING THROUGH YREKA TO HIGHWAY 5*****
FOR TIME AND DEMOB - NO NEED TO COME TO WILLOW CREEK ICP

*** EQUIPMENT TIME***

Finance will generate the Emergency Equipment - Use Invoice (OF-286) and e-mail OF-286 to company owner for review and signature.

*** PERSONNEL TIME***

Finance will generate the Incident Time Report(s) (OF-288) and e-mail OF-288 to designated contact for review.

When finished with the items above, return to the Check-in / Demob tent to verify no other information is needed.

Travel Itinerary for
After Demob Process

Last, use the QR Code to complete the "Travel Itinerary for After Demob Process", QR Code Form, OR STOP at the Demob / Check-in tent to verbally report your travel itinerary.



*****RESOURCES TRAVELING SOUTH THROUGH WILLOW CREEK*****

After all of the above stops, EXCEPT for TIME and DEMOB, have been completed. Travel to Willow Creek ICP.

TIME - Overhead, or ONE PERSON from each Vendor or Crew will be requested to visit Finance (Equipment Time or Personnel Time) for payment processing.

DEMOB (LAST) - STOP AT THE DEMOB TRAILER to use the QR Code to complete the "Travel Itinerary for After Demob Process", QR Code Form, OR to verbally report your travel itinerary.

08/14/2020

TENTATIVE RELEASE

RED SALMON COMPLEX US-CA-SRF-000656

CREWS

C-2	0800	(CC)	CAMP CREW FRESNO 21
C-3	0800	(CC)	CAMP CREW PLACER 8
C-4	0800	(CC)	CAMP CREW SACRAMENTO 1
C-7	0800	(HC1)	CREW - T1 - MAD RIVER IHC
C-23	0800	(HC2)	CREW - T2 - FRANCO 17065
C-24	0800	(HC2)	CREW - T2 - FRANCO 17075
C-26	0800	(HC2)	CREW - T2 - FRANCO 17076

EQUIPMENT

E-3	0800	(FT1)	FT1 - FUEL TRUCK
E-10	0800	(PU)	PU - GROOMS
E-13	0800	(STK)	STK - J&D FIRE SUPPRESSION
E-46	0800	(ENG6)	ENG - T6 - GRAYBACK 35
E-57	0800	(WTS2)	WT - S2 - ZABEL
E-199	0800	(STK)	PU - STK - TWIN LABS

OVERHEAD

O-80	0600	(INCM)	KERWIN, KODY W
O-125	0600	(MEDL)	PINETOP FIRE DISTRICT,
O-75	0700	(GISS)	LOWREY, MARK
O-11	0800	(IMET)	BONK, JONATHAN
O-504	0800	(TFLD)	CLIFFORD, STEPHEN
O-64	0800	(PU)	COLORADO RIVER FIRE RESCUE,
O-265	0800	(LTAN)	ENGBER, EAMON A
O-102	0800	(FAL1)	FALM - T1 - REDWOOD EMPIRE
O-219	0800	(ARCH)	HERTFELDER, PAULA JANE

08/14/2020

TENTATIVE RELEASE

RED SALMON COMPLEX US-CA-SRF-000656

O-103	0800	(AREP)	LARA, AARON
O-66	0800	(TFLD)	LEE, AMOS
O-17	0800	(RADO)	MARTSCH, DAVID
O-138	0800	(ARCH)	PADIAN, MICHAEL
O-156	0800	(REAF)	RICKARD, HEATHER
O-131	0800	(DIVS)	ROBINSON (O-131) LWD 8/13,
O-46	0800	(SEC1)	RYAN, MATTHEW
O-39	0800	(BCMG)	TRODICK, JUSTIN A
O-42	0800	(SEC2)	WAUPOOSE, DAVID L
O-25	0800	(EMTP)	ZAMORA, THOMAS

SPIKE CAMP MEDICAL SUPPLY ORDER FORM

Date & Time Order was placed		Order # (DIVS + #)	MODE OF DELIVERY		Location of Delivery
Current Date and Time:			GROUND SUPPORT		Div, DP, LZ Lat Long
DATE NEEDED:			PICK UP IN SUPPLY		
TIME NEEDED:			HELO		
Order received in COMMUNICATIONS by:		Name:			Time:
Order received in SUPPLY by:		Name:			Time:
Order shipped by Transportation or PU in Supply		Name:			Time:
PLEASE ORDER BY ITEM NUMBER ----- AMOUNT QUANTITIES: TOTAL, BOX, CASE					
#	Item	Amount	#	Item	Amount
BANDAGES			FOOT CARE		
1	1" Plastic Band Aid		26	Gold Bond Blue	
2	2"x3" Band Aid		27	Athletes Foot Powder	
3	Knuckle Band Aid		28	Mole Skin	
4	Steri Strip		29	2nd Skin	
5	Ace Bandage		GI / STOMACH		
6	Coban Sports Wrap		30	Tums	
7	2" Medical Tape		31	Pepcid AC	
8	4" x 4" Bandage		32	Pepto Bismo	
9	AAA Ointment		33	Laxative	
10	Alcohol Prep		34	Immodium	
BUGS / INSECTS			HEAD		
11	Bug Spray		35	Ibuprofen	
12	Bug Wipes		36	Tylenol	
13	Sting Swabs		37	Asprin	
COUGH / COLD / ALLERGY			MOUTH		
14	Cough Drops		38	Abreva	
15	Sinus Decongestant		39	Ora Gel	
16	Nyquil + Dayquil		SKIN		
17	Claritin		40	Sunscreen *	
18	Sudafed		41	Hydrocortadzone Cream	
EARS / EYES / NOSE			42	Gold Bond Yellow	
19	Q-Tips		43	Chap Stick	
20	Eye Drops		44	Tech Nu	
21	Eye Wash		45	Hand Santitizer	
22	Contact Solution		46	A & D Ointment	
23	Nasal Saline		47	Body Glide	
FEMALE			48	Bio Freeze	
24	Tampons		49	Baby Wipes	
25	Pamprin		50	Ice Pack	
SPECIAL NOTES					

LINE ORDER FORM

ORDER#	DATE & TIME ORDERED Received from the Line	WHO PLACED ORDER DIVS, OPS, etc....	DELIVER to (DIV. Heli-Spot, DP, etc.) Division, Heli-Spot, Drop Point, etc.	MODE of DELIVERY Drive, Heli, Pick-up

LATITUDE/LONGITUDE

POINT OF CONTACT @ DELIVERY:	PHONE# CALL SIGN

ITEM#	DESCRIPTION	AMOUNT
1	1,000 Foot Hose Lay: Includes the following 10 lengths, 1 1/2" x 100' Hose. 10 lengths, 1" x 100' Hose. 10 ea. 1 1/2" Gated Wyes. 10 ea. 1 1/2" to 1" Reducers. 10 ea. 1" Nozzles.	
2	Mop-Up Kit: Includes the following 20 lengths 3/4" Hose, 6 - 3/4" Nozzles, 6 - 3/4" Ball Shut Offs, 6 - 1" to 3/4" Reducers, 1 Green Knapsack	

ITEM#	REQUESTED ITEM	NFES#	AMOUNT	ITEM#	REQUESTED ITEM	NFES#	AMOUNT
4	Backpack Pump, 5 gallon	1149		26	Batteries, "AA", (package)	0030	
5	Foam, 5 gallon	1145		27	Gasoline, Unleaded (gallon)		
6	Hose, 3/4 inch, 50 ft. length	1016		28	Oil, 2 Cycle Mix (quart)	0341	
7	Hose, 1 inch, 100 ft. length	0966		29	Diesel, straight (gallon)		
8	Hose, 1 1/2 inch, 100 ft. length	0967		30	Oil, Bar & Chain (gallon)	1880	
9	Increaser, 3/4" to 1"	2235		31	Fusees (box)	0105	
10	Increaser, 1" to 1 1/2"	0416		32	Torch, Drip Torch ea.	0241	
11	Nozzle, Garden 3/4 inch	0136		33	Mix, Drip Torch 3-1, 5 gal.		
12	Nozzle, Forester, 1"	0024		34	Flagging, Ribbon, Color/Roll		
13	Nozzle, KK Type, 1"	1081		35	Washcloth, Water less	0206	
14	Nozzle, KK Type, 1 1/2"	1082		36	Water, Cubi, 5 gallon ea.	0048	
15	Reducer, 1" to 3/4"	0733		37	Water, Bottled, (case)		
16	Reducer, 1 1/2" to 1"	0010		38	Sports Drink, Gatorade (case)		
17	Tee, Hoseline, 1"x1"x 3/4"	1809		39	Food, MRE's (12 per Box)	1842	
18	Tee, Hoseline, 1"x1"x 1"	2240		40	Pump Kit, High Pressure	0870	
19	Tee, Hoseline, 1 1/2" x 1 1/2" x 1"	0230		41	Pump, High Pressure	0148	
20	Wye, Gated, 3/4" inch	0904		42	Pump Kit, Light Weight	0670	
21	Wye, Gated, 1"	0259		43	Sprinkler Kit	1048	
22	Wye, Gated, 1 1/2"	0231		44	Pump Kit, Volume	6041	
23	Tank, Collapsible. Gallons?						
24	Tank, Folding/Frame. Gallons?						
25	Wrap, Structure (roll)	0881					

Order Received in Communications By: _____ Date/Time: _____

Communications Relayed Order To: _____ Date/Time: _____

Order Sent to Line By: _____ Date/Time: _____

FIRE REPLACEMENT PROCEDURES

START THIS PROCESS AT LEAST 48 HOURS PRIOR TO DEMOB

Submit requests for all incident replacements on a 213, General Message:

- Separate cache from non-cache items on separate 213's!
- Include explanation for lost or damaged items.
- Include DIVS signature on the 213 to verify the item(s) has/have been lost or damaged and support the circumstances surrounding it.
- For stolen items, contact your supervisor and Security Manager as soon as practical.

FOR CACHE ITEMS

Requesting Resource is NOT Being Demobed and Requested Items ARE Available in Supply:

- R&D shall fill request and note on the 213.

Requesting Resource is NOT Being Demobed and Requested Items are NOT Available in Supply.

- The Supply Unit will place an order for the requested items through the regular cache order process on the incident. The order will be shipped to the incident and replacement will take place at the Supply Unit and noted on the 213.

Requesting Resource IS Being Demobed and Requested **CACHE** Items are NOT in Stock in Supply:

- Along with the 213, complete an *OF-315, Incident Replacement Requisition* for cache items only and take to SPUL for review and approval. Include the requesting resources' email on the form so the Resource Order can be emailed to the Requesting Resource.
- The SPUL will issue S#'s pending receipt and verification of proper documentation for cache items.

NON-CACHE Items – This is the Important Part!!!

Non-Cache items include any item not available through the National Cache System.

Lost, damage, or destroyed government non-cache property shall be reported to the appropriate DIVS or higher-level overhead within 24 hours of occurrence. The requesting resource shall complete an ICS-213 and OF-289, Property Loss and Damage Report – Fire Suppression, available at Orleans Base Camp Supply Unit. Include the following:

- All witnesses shall document the facts and circumstances of the loss or damage on the OF-289. Explanations shall be detailed and indicate how the incident caused the damage.
- The requesting resource will email the completed ICS-213 and OF-289 to the Comp/Claims Unit Leader at scott_parsons@firenet.gov. The COMP will make a determination based upon the documentation presented.
- Approval for replacement is the responsibility of the incident agency and may be delegated to the Incident Management Team for IC and FSC.
- If the replacement request is approved, the replacement cost will be limited to cache equivalent value. The requesting resource will complete OF-315 for the Supply Unit.
- Items that do not have a like-item in the cache will be reviewed and approved at the discretion of the FSC or Incident Business Advisor, as delegated by the Agency Administrator.



Local Government Resources on CFAA

If you are demobing from an incident and there is no OES AREP on site
F-42 thru the Incident Finance Section Chief or the Incident Commander
One of them must sign your 42's

The Incident keeps the Pink copy and you keep the Golden.
The Original and Green you mail to OES Headquarters as per the
instructions on the front of your F-42

OES JOB AIDS, FORMS, F-42 SAMPLES AND CFAA AGREEMENT



Questions?

OES Assistant Chief Pat Titus
916-634-9225

Red Salmon Complex COVID-19 Mitigations

It is the expectation that all incident personnel will follow the CDC and Agency guidance related to COVID-19.



- **Maintain physical distance of 6'+.** There is currently no vaccine to prevent the novel coronavirus (COVID-19).
- **The best way to prevent illness is to avoid being exposed to this virus.**
- The virus is thought to spread mainly from person-to-person.
 - Between people who are in close contact with one another (within about 6 feet).
 - Through respiratory droplets produced from an infected person.



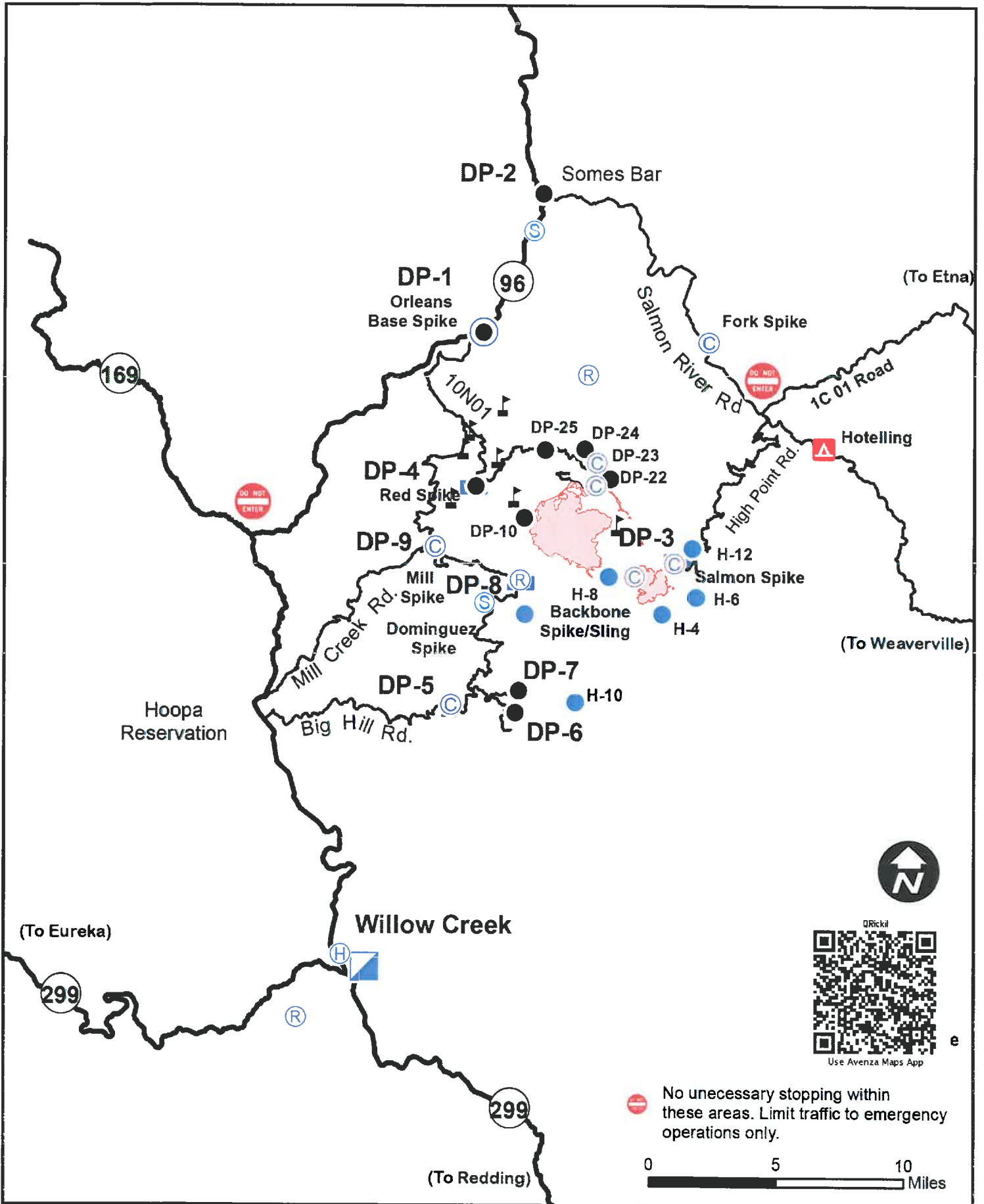
- **Wash your hands** often with soap and water for at least 20 seconds, especially after blowing your nose, coughing, or sneezing.
- If soap and water are not readily available, **use a hand sanitizer that contains at least 60% alcohol.** Cover all surfaces of your hands and rub them together until they feel dry.
- **Avoid touching your eyes, nose, and mouth** with unwashed hands.



- **Wear a face covering.** Outside of fireline activity, it is expected that all incident personnel will wear a face covering when social distancing is not possible with those outside your “module as one”. Face coverings are to be worn, in the appropriate manner, within the ICP, Base, and Spike Camps.

To protect the local communities along Highway 96, under no circumstances will you make any stops. Be prepared to travel non-stop in the areas from Willow Creek to Happy Camp. Expect to see hard closures.

- ***Conduct personnel health screenings daily and report illnesses to supervisor. COVID-19 symptoms include cough, shortness of breath, trouble breathing or any two of fever, chills, repeated shaking with chills, muscle or body aches, headache, sore throat, new loss of taste or smell, congestion or runny nose, nausea or vomiting, or diarrhea.***



Transportation Map

Red Salmon Complex

CA-SRF-0656

08/08/20

Legend

-  ICP
-  Camp
-  Repeater
-  Helispot
-  Drop Point
-  Staging Area
-  Helibase
-  Fire Perimeter

CALIFORNIA INTERAGENCY INCIDENT MANAGEMENT TEAM 4

EXPECTATIONS

Welcome to this Incident.
Thank You for your Cooperation & Support!



2020

CONDUCT AND BEHAVIOR

This team is committed to “ZERO TOLERANCE” of careless, illegal, inappropriate and unsafe actions.

Alcohol and/or illegal drugs are **NOT allowed** within the incident environment or while actively assigned to the incident. Local Law Enforcement Officials will be called to deal with any suspected illegal activities. Each employee has the responsibility to be ready, willing, and able to perform the duties for which they are qualified.

Sexual Harassment

Inappropriate actions or comments will not be tolerated. Everyone is expected to act in a professional manner. It is your responsibility to stop inappropriate actions or comments immediately upon becoming aware of such. Sexual Harassment must be reported to the Human Resource Specialist or Incident Commander. When outside of your designated sleeping area, you are required to wear at least a shirt, appropriate shorts, and shoes or sandals. If you need clarification of these expectations contact the Human Resource Specialist or IC. What we PERMIT we PROMOTE!!!!

SAFETY

The commitment to and accountability for safety is a joint responsibility of firefighters, managers and administrators. Individuals must personally be committed and responsible for their own performance and accountability. Everyone assigned to this incident can expect an assignment that follows all safety rules & regulations. Every person is expected to perform his or her duties in compliance with all known safety practices at all times. Anything less is unacceptable.

EMPHASIS AREAS

Training

All trainees and trainers are expected to follow the procedures outlined in the California Interagency Incident Management Team 4 **Training Expectations – See back page.**

Evaluations

All supervisory personnel assigned will complete an ICS 225 Incident Personnel Performance Rating form for their assigned resources according to agency policy or contractual agreement.

Injuries/Claims

Ensure all injuries and potential claims are reported to the Comp/Claims Unit for completion of appropriate paperwork. Contract claims will be reported to the Procurement Unit Leader.

Work Rest Cycles

The 2: 1 work/rest ratio is mandatory. For every two hours on shift you will be required to rest for one hour. Every effort shall be used to limit work hours to a maximum of 16. If circumstances require you to exceed 16 hours, this needs to be coordinated in advance with your supervisor and the Justification/Mitigation form completed to support the excessive hours prior to submitting for approval by the IC. It is your responsibility to comply with this direction and provide the appropriate documentation to your Supervisor and Finance.

Position Qualifications

Personnel shall only be assigned to positions for which they are qualified. Proof of qualifications shall be approved prior to being assigned to any fire line position. Non-fireline positions may be filled based on the word of the employee pending home unit confirmation, which must be requested immediately. Contract dozer operators, tactical water tender operators and contract fallers must provide proof that they have received the annual fire refresher training.

Engagement/Disengagement

The 10 Standard Orders & 18 Watchout Situations will be followed at all times and mitigated as needed. Staying aware of your situation is critical. This includes Geographic Area and incident briefings. Follow the Risk Management Process outlined in the Incident Response Pocket Guide.

Debriefing

All Branch Directors/Division/Group Supervisors will report to their Supervisor and Situation Unit at the end of the operational period for debriefing with emphasis on the accomplishment of objectives. All unit logs (ICS 214) will be turned in after the debriefing to Documentation reflecting accomplishment and/or special incidents that occurred during the operational period.

Crew Time Reports/Shift Tickets

It is your responsibility to ensure all time is properly accounted for and recorded each shift. The records are to be reviewed and signed by the next level supervisor. A finance "Rules of Engagement" document will be provided in the IAP explaining further requirements.

Social Media

It is your responsibility to know and understand guidelines for firefighter photography, video and social media use. California Interagency Incident Management Team 4 goal is simple: to participate online in a respectful, relevant way that protects our incident's professional reputation, does not confuse the public about the incident and follows the letter and spirit of the law. Be mindful that social media postings can be viewed as unprofessional, damage careers and lead to disciplinary actions. For further information, contact the Public Information Officer.

We look forward to working with you as a valuable member of this effort. If you have any questions or feedback, please feel free to contact any Command and General Staff Member.

JAY KURTH
Incident Commander

ROCKY W. OPLIGER
Deputy Incident Commander

THANK YOU FOR YOUR COOPERATION AND GOOD WORK!!



CALIFORNIA INTERAGENCY INCIDENT MANAGEMENT TEAM 4 TRAINING EXPECTATIONS

1. Upon arrival at the incident and after check-in, the trainee will bring the following documents to the initial meeting with the training specialist:
 - a. A properly initiated Position Task Book.
 - b. Your Request Number and your Agency (3) letter identifier.
 - c. Your agencies Fire Chief or Training Officers name, address, and phone number to insure that a copy of the training documents will be mailed back to your home unit.
 - d. Your current Incident Qualification Card (red card) that identifies you as a Trainee in the position you are seeking to be trained.
2. Have you identified or has a Trainer been assigned to you and if so, have the Trainer present when you meet with the training specialist.
3. At closeout and prior to entering the demobilization process, you should complete, sign, and review with the trainer the Final exit interview form. Once the form is complete, bring the following documents to the Training Specialist for closeout;
 - a. Position Taskbook (Evaluation Record dated and signed by the Trainer).
 - b. Completed ICS 225 (Personal Evaluation Record) dated and signed by both the trainee and trainer.
 - c. Completed Final Exit Interview Form – dated and signed by both the trainee and the trainer.

Trainer Expectations

1. Arrive with the Trainee at the initial meeting with the Training Specialist.
2. Be ready to provide your Contact information and your Incident Request number.
3. Have a Current Incident Qualifications Card (Red Card) in a position of equal or greater qualifications that the Trainee is trying to achieve.
4. Be willing to educate, support, and provide professional and consistent feed back to the trainee during the assignment.
5. Throughout the incident the trainer shall continue to monitor and review with the trainee their tasks and goals within the taskbook.
6. The trainer, where appropriate is expected to sign off task's that are achieved by the trainee and to complete and sign the following documents.
 - a. ICS 225 (Personal Evaluation Form)
 - b. Evaluation Record at the back of the taskbook.
7. The trainer shall portray a positive and professional attitude that lets the trainee know that it is desirable to ask for direction and feedback.
8. When accepting the role as a trainer, you are expected to act in a professional manner that represents the California Interagency Incident Management Team 4 and your home agency.

