

# INCIDENT ACTION PLAN

## LOYALTON INCIDENT

CA-TNF-1600  
P5 NFB9 (0517)

Thursday



### NIGHT SHIFT

8/20/2020 1800  
to  
8/21/2020 0600

Fire Information: (530) 362-8282



# INCIDENT OBJECTIVES (ICS 202)

<b>1. Incident Name:</b> Loyalton	<b>2. Operational Period:</b>	Date From: 8/20/2020	Date To: 8/21/2020
		Time From: 1800	Time To: 0600

**3. Objective(s):**

Management Objectives

- Provide for safety of incident responders and public through the application of sound risk management and implementation of tactics that have a high probability of success with the least amount of exposure including mitigations for COVID-19.
- Implement tactics that limit the damage to and provide for the protection of the Sage Grouse habits, Mule Deer, Northern Goshawk Activity Center, Babbitt Peak RNA and Washoe Tribal lands, including numerous historic cultural sites.
- Build and maintain positive relationships between assigned resources, cooperators, stakeholders, and affected communities through professional engagement.
- Provide prompt communication of all pertinent incident activities to stakeholders, cooperators and the public.
- Keep costs commensurate with the values at risk by using thoughtful business processes.

Control Objectives

Keep the fire:

- West of Highway 395 to protect Cold Springs and grazing lands
- South of Highway 70 to protect Chilcoot and Vinton
- East of Highway 49 to protect Loyalton, Sierra Brooks and Sierra Valley
- North of Babbitt Peak to protect Dog Valley, Jones Valley and Bean Valley

**General Situational Awareness:**

- Steep and rugged terrain, critically dry and receptive fuel beds, active area for fire history and drought stressed trees.
- In the COVID-19 environment, high density populations or large groups are particularly at risk. To help protect yourself, your family and to ensure all employees return home safely, make sure to practice social distancing.
- Enhanced hygiene (especially handwashing), PPE & monitoring practices help limit the infection rate of first responders.

**5. Site Safety Plan Required?** Yes  No

**Approved Site Safety Plan(s) Located at:**

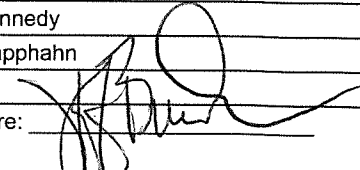
**6. Incident Action Plan**

<input checked="" type="checkbox"/> ICS 203	<input checked="" type="checkbox"/> ICS 215A	<input type="checkbox"/> Covid Tracking	<input type="checkbox"/>
<input checked="" type="checkbox"/> ICS 204	<input type="checkbox"/> ICS 220	<input checked="" type="checkbox"/> Training Message	<input type="checkbox"/>
<input checked="" type="checkbox"/> ICS 205	<input checked="" type="checkbox"/> Facility Maps	<input type="checkbox"/> Travel Map	<input checked="" type="checkbox"/> COVID-19 Message
<input checked="" type="checkbox"/> ICS 206	<input checked="" type="checkbox"/> Weather Forecast	<input type="checkbox"/> Demob Plan	<input checked="" type="checkbox"/> ICS 214
<input type="checkbox"/> ICS 208	<input checked="" type="checkbox"/> Fire Behavior	<input checked="" type="checkbox"/> Finance Message	<input checked="" type="checkbox"/> WF206 8 Line

<b>7. Prepared By:</b> John Owen	Position/Title: PSC	Signature:
<b>8. Approved by Incident Commander:</b>	Daren Dalrymple	Signature:

ICS 202

## ORGANIZATION ASSIGNMENT LIST (ICS 203)

<b>1. Incident Name:</b> Loyalton		<b>2. Operational Period: Date From:</b> 8/20/2020 Time From: 1800		<b>Date To:</b> 8/21/2020 <b>Time To:</b> 0600	
<b>3. Incident Commander(s) and Command Staff:</b>			<b>7. Operation Section:</b>		
IC/UC's	Daren Dalrymple / Todd Mack (t)		Operations	Heather McRae / Mark Johnson (t)	
Deputy	Joe Molhoek		Planning Ops	Dan George	
Safety Officer	F. Pingicz / T. Floyd / R. Hilfer (t)		Night Ops	Tom Browning	
Night Safety Officer	Charles Frank				
Information Officer	Adrienne Freeman / Kaleena Lynde				
	Celeste Prescott				
Liaison Officer	Tim Fike / Darren McMillin (t)		<b>Branch</b>		
<b>4. Agency/Organization Representatives:</b>			Division/Group	A/G/J/M	Ezra Stiles
Agency/Organization	Name		Division/Group	P/R	Mike Anderson / Truett Anderson (t)
Tahoe NF Agency Admin	Eli Ilano		Division/Group	Z	Gene Neelly / Jason Bunker (t)
Tahoe NF Agency Rep	Quentin Youngblood		Division/Group		
Humboldt-Toiyabe NF Agency Admin.	Bill Dunkelberger		Division/Group		
Humboldt-Toiyabe NF Agency Rep	Matthew Zumstein		Division/Group		
Carson City BLM Agency Admin.	Emily Ryan		Division/Group		
Cal Fire NEU Agency Admin.	Brian Estes		Division/Group		
Cal Fire NEU Agency Rep	Jim Hudson / Mike Rufenacht		Division/Group		
Sierra County Sheriff	Mike Fisher		Division/Group		
Cal OES Agency Rep	Corey Zander		Division/Group		
<b>5. Planning Section:</b>			Division/Group		
Chief	John Owen		Division/Group		
Deputy	Jeff Buscher / Matt Johnson		Division/Group		
Resource Unit	Duane Miller / Mike Velazquez (t)		Division/Group		
Situation Unit	Dominic Marcanio (t)		Division/Group		
Documentation Unit	Christine Oelschlager		Division/Group		
Human Resources Specialist	Ryan Voelkl		Division/Group		
GISS	Kim Deniz / Steve Walterscheid		Division/Group		
FBAN	Ken Larson / Josh Schmalenberger (t)		Division/Group		
IMET	Derek Williams		Division/Group		
SCKN	Stacey Barnett		Division/Group		
Training Tech Spec	Brad Smith		Division/Group		
ITSS	Shane Neal / Zack Sohl		Division/Group		
	Michelle Allen / Ricardo Facio(t)		Division/Group		
<b>6. Logistics Section</b>			<b>Air Operations Branch</b>		<b>Director:</b> Staci Dickson
Chief	Jack Costello		Air Support Group Supervisor		Ray Wilson
Supply Unit	Tracey Valentine		Air Tactical Group Supervisor		
Ordering Manager	Mani Bouslaugh		Helibase Manager		
Facilities Unit	Robin Davis / Bill Patten/ Sean Caywood		<b>8. Finance/Administration Section:</b>		
Security Manager	Pete Dean Jack S. Paulsen (t)		Chief	Beth Lopez	
Ground Support Unit	Jeff Taylor		Time Unit	Penny Portlock / Juanita Cortez	
Communications Unit	Richard Stone		Equipment Time		
Communication Tech	Chuck Schuler		Personnel Time	Layne Clark	
Medical Unit	Pat Young		Comp/Claims Unit	Tina Kennedy	
Equipment Manager	Greg Jewers		Cost Unit	Sam Rapphahn	
Food Unit Leader	Becky Baker / Jorge Cervantes				
<b>Prepared By: Name:</b>	John Owen	<b>Position/Title:</b>	PSC	<b>Signature:</b>	
<b>ICS 203</b>		<b>Date/Time:</b>	8/20/2020 1400		



# Fire Weather Forecast

**FORECAST NO: 5**  
**PREDICTION FOR: Night Shift**  
**DATE: August 20<sup>th</sup>, 2020**  
**FORECAST ISSUED: 1000 August 20<sup>th</sup>, 2020**

**NAME OF FIRE: Loyalton**  
**UNIT: Tahoe National Forest**  
**Incident Meteorologist: Derek Williams**  
**Signed: *Derek Williams***

---

**WEATHER DISCUSSION:** A steady southwest wind is expected along higher exposed slopes and ridges tonight. Otherwise, expect lower winds in sheltered valleys and leeward areas of ridgelines. RH recoveries will again be stratified with poorer recoveries along mid and upper slopes. Smoke could cause visibility issues overnight.

**TONIGHT:**

**WEATHER:** Dry with smoke and haze. Poor visibility in some locations.

<b>TEMPERATURES:</b>	<b>Valleys</b>	47-52° (1-2° cooler)
	<b>Upper Slopes</b>	53-58° (1-2° cooler)
<b>HUMIDITY:</b>	<b>Valleys</b>	45-55% (little change)
	<b>Upper Slopes</b>	30-35% (little change)

**20 FT WINDS:**

**Valleys:** Southwest wind 5-10 mph in the evening. Downslope/downvalley at 2-5 mph developing after 2000 in sheltered valleys.

**Ridges:** Southwest wind 10-15 mph with gusts to 20 mph.

**CWR (>0.10 of an inch): 0%**

**LIGHTNING ACTIVITY LEVEL: 1.**

**INVERSION:** Inversion developing. Expect poor RH recoveries on mid and upper slopes.

---

# FIRE BEHAVIOR FORECAST

FORECAST NUMBER: 10

TYPE OF FIRE: Wildland Fire

FIRE NAME: Loyalton

OPERATIONAL PERIOD: 1800-0600, Aug 20-21, 2020

DATE ISSUED: August 20 2020

TIME ISSUED: 1200

UNIT: Tahoe National Forest

SIGNED: *Isl Josh Schmalenberger*, FBAN (t)

## INPUTS

**WEATHER SUMMARY:** \*\*\*See attached Fire Weather Forecast\*\*\*

Discussion: Dry with smoke and haze. Poor visibility likely

Temp: 47-58; Max RH: 30-35% (45-55% in valleys). 20' valley winds SW 5-10 in evening becoming downslope 2-5 after 2000. 20' ridge winds SW 10-15 mph with gust to 20 mph. Inversion developing. Expect poor RH recovery on mid and upper slopes.

## FIRE BEHAVIOR

### GENERAL

Poor nighttime humidity recoveries and strong SW winds may keep fire behavior active tonight on the upper slopes and ridges. There is low potential for fire to become established outside containment lines.

The primary carrier on the Loyalton Fire is the grass and shrub fuels. The timber stands and stringers with understory brush will continue to burn in the evening and through the night.

Regional smoke transporting from other fires in California will continue throughout the day and night and may reduce predicted fire behavior.

### SPECIFIC FIRE BEHAVIOR

Probability of ignition early evening 80% dropping to 30% overnight.

Grass/ Shrub fuel types: Anticipated rates of spread are up to 25 chains per hour with flame lengths 4' when aligned with winds and topography. As winds diminish later in the evening the projected rates of spread and flame lengths will decrease.

Timber with Mahogany/ Bitter Brush: Anticipate active backing and flanking fire with moderate rates of spread. Single tree to group torching may occur with spotting distances max 3/10 of a mile. 10hr fuels will be expected to carry fire where present through the night.

## AIR OPERATIONS

Smoke will have an impact and may preclude any evening air operations.

Sunset: 19:49 08/20      Sunrise: 06:19 08/21

## SAFETY

The weather is expected to continue to be hot, dry, and windy tonight and into the foreseeable future.

- Evaluate safety zones and escape routes for anticipated fire behavior; post lookouts to monitor fire behavior and maintain situational awareness.
- Communicate weather conditions regularly to Fireline personnel.

# ASSIGNMENT LIST (ICS 204 WF)

CONTROLLED UNCLASSIFIED  
INFORMATION//BASIC

<b>1. Incident Name:</b> <p style="text-align: center;"><b>Loyalton</b></p>	<b>2. Operational Period:</b> Date From: 08/20/20    Date To: 08/21/20 Time From: 1800    Time To: 0600	<b>3. Branch</b> <b>Division</b> <p style="text-align: center;"><b>A/G/J/M</b></p>
--	---	---

<b>4. Operations Personnel:</b>		<b>Page 1 of 1</b>
Operations Section Chief: <b>Heather McRae / Mark Johnson (t)</b>	Night Ops: <b>Tom Browning</b>	
Branch Director:	Safety: <b>Chuck Frank</b>	
Division/Group Supervisor: <b>Ezra Stiles</b>	Air Branch Director:	

5. Resources Assigned:						
Resource Identifier	Request #	Leader	Personnel	LWD	Hours	Reporting Location
ENG3 - Archer Mountain Enterprises	E-130	Tom Hatton	3	8/31	1800-0600	DP 1 1800
ENG6 Rocky Point 118	E-139	Ryan Flores	3	8/30	1800-0600	DP 1 1800
ENG6 - Grayback 35	E-141	Timothy Hinigin	3	8/31	1800-0600	DP 1 1800
WT2 Loyalton Tender 1	E-193	Colby Russle	1	8/30	1800-0600	DP 1 1800

**6. Work Assignments:**  
Patrol and mop up to the extent necessary to maintain containment

**7. Special Instructions:**

8. Communications							
Name	Ch	Function	Rx Freq	Rx Tone	Tx Freq	Tx Tone	Notes
CMD 1	1	COMMAND	170.9750N		168.7000N	T-1 - 110.9	BABBIT PEAK-Use Tone 1 - 110.9
NIFC T1	3	TACTICAL	168.0500N		168.0500N	T1 - 110.9	DIVISION A/G/J/M TACTICAL
A/G CMD	14	A/G CMD	166.9375N		166.9375N		AIR TO GROUND COMMAND
CALCORD	15	MEDICAL	156.0750N		156.0750N	T6 - 156.7	For Medical Emergencies Only
AIRGUARD	16	AIRGUARD	168.6250N		168.6250N	T1 - 110.9	EMERGENCY ONLY

<b>9. Prepared by: Name:</b>	Duane Miller / Mike Velazquez (t)	RESL	<b>Signature:</b>
<b>ICS 204</b>	Date/Time: 8/20/2020 1400	<b>Personnel Count:</b> 40	

# ASSIGNMENT LIST (ICS 204 WF)

CONTROLLED UNCLASSIFIED  
INFORMATION//BASIC

<b>1. Incident Name:</b> <p style="text-align: center; font-size: 1.2em;">Loyalton</p>	<b>2. Operational Period:</b> Date From: 08/20/20    Date To: 08/21/20 Time From: 1800    Time To: 0600	<b>3. Branch</b> <b>Division</b> <p style="text-align: center; font-size: 1.5em;">P/R</p>
---	---	--

<b>4. Operations Personnel:</b>		<b>Page 1 of 1</b> <b>Papa/Romeo</b>
Operations Section Chief: <b>Heather McRae / Mark Johnson (t)</b>	Night Ops: <b>Tom Browning</b>	
Branch Director:	Safety: <b>Chuck Frank</b>	
Division/Group Supervisor: <b>Mike Anderson / Truett Anderson (t)</b>	Air Branch Director:	

5. Resources Assigned:						
Resource Identifier	Request #	Leader	Personnel	LWD	Hours	Reporting Location
CRW1 C-18 Reese River Regulars	C-18	Colton Leadbetter	16 +/-	8/23	1800-0600	DP 49 1800
XCA 4054C	E-123	Miller, Terry	19	8/30	1800-0600	DP 49 1800
ENG3 NMS 317	E-127	David Cruz	4	9/1	1800-0600	DP 49 1800
ENG3 Wildfire Support	E-134	Vladimir Senutovitch	3	9/1	1800-0600	DP 49 1800
DOZ2 ROEN 2 24HR W/LOWB	E-15		2	8/28	1800-0600	DP 49 1800
DOZ2 ROEN 24HR W/LOWB	E-1		2	8/28	1800-0600	DP 49 1800
WT2 - BEN'S TRUCK & EQUIP	E-68	Carl Hale	1	8/31	1800-0600	DP 49 1800
HEQB Darragh	O-10	Darragh, Eric Robert	1	8/28	1800-0600	DP 49 1800
HEQB Jerry (t)	O-34	Jerry, Joe A	1	8/29	1800-0600	DP 49 1800
FEMP McCarthy	O-60	Mccarthy, Matthew Shawn	1	8/29	1800-0600	DP 49 1800
FEMT Oberg	O-67	Oberg, Jonathan	1	8/29	1800-0600	DP 49 1800

**6. Work Assignments:**  
Hold, patrol and mop up to achieve / maintain containment

**7. Special Instructions:**

8. Communications							
Name	Ch	Function	Rx Freq	Rx Tone	Tx Freq	Tx Tone	Notes
CMD 1	1	COMMAND	170.9750N		168.7000N	T-1 - 110.9	BABBIT PEAK-Use Tone 1 - 110.9
NIFC T6	7	TACTICAL	166.7750N		166.7750N	T1 - 110.9	DIVISION P/R TACTICAL
A/G CMD	14	A/G CMD	166.9375N		166.9375N		AIR TO GROUND COMMAND
CALCORD	15	MEDICAL	156.0750N		156.0750N	T6 - 156.7	For Medical Emergencies Only
AIRGUARD	16	AIRGUARD	168.6250N		168.6250N	T1 - 110.9	EMERGENCY ONLY

<b>9. Prepared by: Name:</b>	Duane Miller / Mike Velazquez (t)	RESL	Signature:
<b>ICS 204</b>	Date/Time: 8/20/2020 1400	Personnel Count: 51	



# ASSIGNMENT LIST (ICS 204 WF)

CONTROLLED UNCLASSIFIED  
INFORMATION//BASIC

<b>1. Incident Name:</b> <div style="text-align: center; font-size: 1.2em;">Loyalton</div>	<b>2. Operational Period:</b> Date From: 08/20/20    Date To: 08/21/20 Time From: 1800    Time To: 0600	<b>3. Branch</b> <b>Division</b> <div style="text-align: center; font-size: 1.5em;">Z</div>
---	---	--

<b>4. Operations Personnel:</b>		Page 1 of 1 <b>Zulu</b>
Operations Section Chief: <b>Heather McRae / Mark Johnson (t)</b>	Night Ops: <b>Tom Browning</b>	
Branch Director:	Safety: <b>Chuck Frank</b>	
Division/Group Supervisor: <b>Gene Neelly / Jason Bunker (t)</b>	Air Branch Director:	

5. Resources Assigned:							
Resource Identifier	Request #	Leader	Personnel	LWD	Hours	Reporting Location	
CRW1 C-9 MENDOCINO IHC	C-9	Ernest Cecon	20	8/28	1800-0600	DP50 / 1800	
HC2 Torres Construction	C-30	Leonardo Cabrera	20	9/1	1800-0600	DP50 / 1800	
DO22 TOUGH 24HR W/LOWB	E-47	Mark Hamilton	2	8/29	1800-0600	DP50 / 1800	
DO22 - C.J. GRAHAM 2 24 W/LOWB	E-52	Jared Esteves	2	8/29	1800-0600	DP50 / 1800	
FEMP Thompson	O-64	Thompson, Taylor	1	8/30	1800-0600	DP50 / 1800	
FEMT Tevis	O-71	Tevis, Anthony James	1	8/31	1800-0600	DP50 / 1800	

**6. Work Assignments:**  
Hold, patrol and mop up to achieve / maintain containment

**7. Special Instructions:**

8. Communications							
Name	Ch	Function	Rx Freq	Rx Tone	Tx Freq	Tx Tone	Notes
CMD 1	1	COMMAND	170.9750N		168.7000N	T-1 - 110.9	BABBIT PEAK-Use Tone 1 - 110.9
NIFC T3	8	TACTICAL	168.6000N		168.6000N	T1 - 110.9	DIVISION Z TACTICAL
A/G CMD	14	A/G CMD	166.9375N		166.9375N		AIR TO GROUND COMMAND
CALCORD	15	MEDICAL	156.0750N		156.0750N	T6 - 156.7	For Medical Emergencies Only
AIRGUARD	16	AIRGUARD	168.6250N		168.6250N	T1 - 110.9	EMERGENCY ONLY

**9. Prepared by: Name:** Duane Miller / Mike Velazquez (t)    RESL

Signature: *Mike Velazquez*    Personnel Count: 46

ICS 204    Date/Time: 8/20/2020    1400

Lookouts  
Communications  
Escape Routes  
Safety Zones

# LOYALTON

Operation Period: 08/20-21/2020 Night Shift

## SAFETY MESSAGE

### The Small Things Make a Difference

- Stay focused on the small things that can compromise your safety
- Small issues may seem inconsequential when viewed alone
- Sometimes multiple small issues can develop into a major problem
- Mitigate small issues so they do not snowball into a major issue
- Communicate minor problems so everyone is aware

### *MAJOR HAZARDS AND RISKS*

STEEP TERRAIN FATIGUE SPOT FIRES	ROLLING MATERIAL DEHYDRATION BUCKET DROPS	HEAVY EQUIPMENT SNAGS COMPLACENCY
--	---	---

*Be sure all elements of your safety plan are in place prior to engagement*

#### Watch for Over Confidence During Mop Up

**\*Driving:** As you become more familiar with the road systems, we tend to increase speeds. Please be aware of this and keep speeds down, watch for people and vehicles along the roads, and drive defensively.

**\*PPE:** Please recognize that in low stress situations like mop up, it is easy to over-look the importance of wearing the appropriate PPE including eye protection.

**\*Work Area:** Familiarity with your work area can result in a lowering of awareness, especially as conditions change.

#### Briefing Protocol

Brief your personnel using the IRPG checklist prior to engagement.

Re-brief anytime your plan changes, unexpected changes compromise the plan or your safety, or anytime essential information becomes known and needs to be communicated.

Ask questions to be sure essential content is understood.

Thorough briefings are essential for success.

CIIMT Team 10 Safety Office Frank Pingiczer, Chuck. Frank SOF2, Robert Hilfer, SOF2(T)

## INCIDENT RISK ANALYSIS (ICS 215A) Loyalton Fire Night 08/20-21/2020

DIV	HAZARDOUS ACTIONS / CONDITIONS	MITIGATIONS / WARNINGS / REMEDIES
ALL	<b>LIGHT FLASHY FUELS / DRY FUEL CONDITIONS</b>	<ul style="list-style-type: none"> <li>Anticipate active fire behavior and rapid rates of spread</li> <li>Establish and maintain LCES.</li> <li>Expect increased spot fires.</li> <li>Allow for adequate time to escape routes and safety zones.</li> </ul>
ALL	<b>FIRE WEATHER</b>	<ul style="list-style-type: none"> <li>Winds increasing or changing direction.</li> <li>Weather becoming hotter and drier.</li> <li>Unstable atmosphere can promote rapid fire growth.</li> </ul>
ALL	<b>SPOT FIRES</b>	<ul style="list-style-type: none"> <li>Size up prior to engagement.</li> <li>Watch for multiple spots.</li> <li>Ensure LCES is in place.</li> <li>Maintain Situational Awareness at all times.</li> </ul>
ALL	<b>POINT PROTECTION</b>	<ul style="list-style-type: none"> <li>Do not commit to stay in areas without adequate safety zones.</li> <li>Set trigger points to disengage and allow adequate time to relocate to primary and secondary safety zones.</li> <li>Look for propane tanks and other hazardous materials.</li> </ul>
ALL	<b>HEAT RELATED ILLNESS (HRI) &amp; DEHYDRATION</b>	<ul style="list-style-type: none"> <li>Drink 2 to 1 water to sports drinks.</li> <li>Take frequent breaks.</li> <li>Recognize symptoms of HEAT RELATED ILLNESS which include: Lack of energy, headaches, dizziness, lack of rest, no hunger, poor eating habits, hot skin, and lack of sweating.</li> </ul>
ALL	<b>POWERLINES</b>	<ul style="list-style-type: none"> <li>Treat all powerlines as live. Some structures may have generators that may be putting power back into the lines.</li> <li>Review Powerline Safety section in IRPG (pg. 24-26).</li> <li>Communicate, Identify, Isolate, Deny Entry.</li> </ul>
ALL	<b>COVID</b>	<ul style="list-style-type: none"> <li>Maintain 6' foot distance whenever possible. Utilize masks, frequent handwashing/sanitizing, disinfect common surfaces, follow county Public health guidelines. Monitor for symptoms, follow reporting procedures.</li> </ul>
ALL	<b>PUBLIC IN AREA</b>	<ul style="list-style-type: none"> <li>Expect more public in the fire area, especially where there is greater fire activity.</li> <li>Park off highway and use turnouts.</li> <li>Use overhead lights or at a minimum flashers on Highways 395, 70 and 49.</li> <li>If possible talk to public to move in safer location. Go through DIVS if law enforcement is needed.</li> </ul>
P/R,Z	<b>HEAVY EQUIPMENT OPERATIONS</b>	<ul style="list-style-type: none"> <li>Ensure communications are established with operators.</li> <li>Use hand signals if other communications are unavailable.</li> <li>Maintain a 50'-100' exclusion area around equipment.</li> <li>Use a spotter when backing.</li> </ul>
P/R,Z	<b>DIRECTLINE CONSTRUCTION</b>	<ul style="list-style-type: none"> <li>Conduct thorough briefing for all personnel.</li> <li>Ensure LCES in place prior to engagement. Adhere to 10 Std. Orders, mitigate 18 Situations. Use Downhill Line Checklist.</li> <li>Utilize Risk Management Process.</li> </ul>
P/R,Z	<b>INDIRECT LINE CONSTRUCTION</b>	<ul style="list-style-type: none"> <li>Establish and maintain LCES.</li> <li>Locate line in favorable location, lighter fuels and gentler topography when possible.</li> <li>Utilize natural or existing barriers.</li> </ul>
ALL	<b>MOP-UP</b>	<ul style="list-style-type: none"> <li>Conduct thorough briefing for all personnel (inside rear cover IRPG).</li> <li>Use all required PPE, including eye protection.</li> <li>Maintain proper spacing and overhead clearance.</li> <li>Be alert for hazard trees, stump holes, and ash pits.</li> <li>Minimize exposure to smoke.</li> </ul>
ALL	<b>TRAFFIC &amp; DRIVING</b>	<ul style="list-style-type: none"> <li>Practice "Defensive Driving" techniques.</li> <li>Use spotters when backing.</li> <li>Always use headlights.</li> <li>Some roads are dead end with poor turn around, scout roads first.</li> <li>Watch for livestock.</li> </ul>

INCIDENT NAME

Loyalton

ICS 215a

DATE PREPARED:

**August 20, 2020**

OPERATIONAL PERIOD

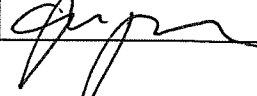
**Day 08/20-21/2020**

**1800-0600**

Prepared by

*Frank Pingiczer*

TIME PREPARED: **1000 HOURS**



## **Fire and COVID-19 Briefing Checklist**

### **Self-Awareness / Screening**

- Immediately separate yourself from others.
- Notify supervisor if you or others experience:
  - o Cough, more than expected
  - o Shortness of breath or difficulty breathing
  - o New loss of taste or smell
  - o Fever                      o Chills
  - o Sore throat      o Muscle pain
- Review and follow crew and division plans to isolate, triage, and transport symptomatic personnel.

### **Hygiene on the Fireline**

- Properly wash or sanitize your hands often, especially before and after eating or entering a public place, and after coughing or sneezing.
- Avoid handshakes and communal use items.
- Maintain a supply of hand sanitizer and hand wipes. Inform supervisor of needed resupply.
- Disinfect high touch surfaces often:
  - o Radios, phones, doors, pumps, fuel cans, etc.

### **Social Distancing and Protective Equipment**

- Initiate, practice, and remind others of social distancing.
- Conduct briefings and conversations outdoors and at least 6 feet apart.
- Utilize face coverings as a tool when practical.
- Clean or replace dirty face coverings, equipment, and PPE.

### **Communications**

- Face coverings and social distancing complicate communications. Ensure effective sender/receiver messaging.

### **Protect yourself, your crew, and your camp!**

Find more information: <https://www.nwccg.gov/coronavirus>

## **WILDLAND FIRE COVID-19 SCREENING TOOL**

**Have you in the past 14 days, had contact with a person known to be infected with the Coronavirus (COVID-19)?**

**Today or in the past 24 hours, have you had any of the following symptoms?**

- + Cough more than expected?
- + Fever? Chills?
- + Nausea or vomiting?
- + New loss of taste or smell?
- + Headache, outside your normal for firefighting?
- + Congestion or runny nose, outside your normal for firefighting?
- + Muscle pain, outside your normal for firefighting?
- + Shortness of breath or difficulty breathing?
- + Sore throat?
- + Diarrhea?
- + Fatigue, outside your normal for firefighting?

## MEDICAL PLAN (ICS 206)

<b>1. Incident Name:</b> <p style="text-align: center;">Loyalton</p>	<b>2. Operational Period:</b> Date From: 8/20/20 Date To: 8/21/20 Time From: 1800 Time To: 0600
---	--

3. EMS / Ambulance Services:			
Name	Location	Contact Number/Freq	Paramedics
Care Flight Ground Ambulance - Call Sign P12	DP 50	Command or 530-477-7237	Yes

4. Air Rescue / Air Ambulance Services:			
Name	Phone / Frequency	Type of Aircraft & Capability	
Care Flight	Command or 530-477-7237	ALS Day and Night Medical Ship	ALS
C.H.P.	Command or 530-477-7237	Day Hoist	BLS
Raven 7	Command or 530-477-7237	Day Hoist	BLS

5. Hospitals:							
Hospital Name	Address	Contact Number(s)	Travel Time		Trauma Center	Burn Center	Helipad
	Lat & Long Helipad	Frequency	Air	Ground			
Eastern Plumas Health Care	500 1st Ave Portola, Ca. 96122	530-832-6517		40 Min	EDAT		
Tahoe Forest Hospital	10121 Pine Ave Truckee, Ca. 96161	530-582-3208		40 Min	Level 3		
		530-587-3205 Report					
Renown Regional Medical Center	1155 Mill St, Reno, Ca.89502	775-982-2005	20 Min	1 Hr	Level 2		
	N 39 31' 34" x W 119 47' 45"						
U.C. Davis Medical Center	2315 Stockton Blvd. Sacramento, Ca. 95817	ER 916-734-3790 Burn 916-734-3636	1 Hr.	6 Hr	Level 1		
	N 38 33' 29" x W 121 27' 32"	Tx/Rx 155.340					

<b>6. Special Medical Emergency Procedures</b>		<i>Update and discuss with assigned resources daily</i>
<b>Fireline EMT / Medic's Division / Branch Location</b>		
<b>Air Hoist site location site: Lat / Long / Elevation:</b>		
<b>Helispot: Lat / Long / Elevation:</b>		

Check box if aviation assets are utilized for rescue. If assets are used, coordinate with Air Operations.

7. Remote Aid Stations				
	<b>Point of Contact:</b>			
	<b>Equipment Available on site:</b>			
	<b>Ambulance ETA:</b>	<b>Air</b>		<b>Ground</b>

<b>8. Prepared by (Medical Unit Leader):</b>	Patrick Young	Signature:
<b>9. Approved by (Safety Officer):</b>	Frank Pingiczer	Signature:
ICS 206	Date/Time:	08/15/2020

**ICS 205 - INCIDENT RADIO COMMUNICATIONS PLAN**

**CONTROLLED UNCLASSIFIED INFORMATION//BASIC**

1. Incident Name: **Loyalton**

2. Date/Time Prepared: 08/19/2020 1930

3. Operational Period: Date From: 08/20/20 Date To: 08/21/20  
Time From: 1800 Time To: 0600

4. Communications

Ch#	Function	Name	Assigned To	Rx Freq	Rx Tone	Tx Freq	Tx Tone	Notes
1	COMMAND	CMD 1	CMD 1	170.9750N		168.7000N	T-1 - 110.9	BABBIT PEAK-Use Tone 1 - 110.9
2	COMMAND	CMD 2	CMD 2	170.0125N		165.2500N	T1 - 110.9	Dixie Mtn - Use Tone 1-110.9
3	TACTICAL	NIFC T1	DIV A/G/J/M	168.0500N		168.0500N	T1 - 110.9	DIVISION A/G/J/M TACTICAL
4	TACTICAL	NIFC T5	UNASSIGNED	166.7250N		166.7250N	T1 - 110.9	UNASSIGNED
5	TACTICAL	R5 T5	UNASSIGNED	167.1125N		167.1125N	T1 - 110.9	UNASSIGNED
6	TACTICAL	NIFC TAC 7	UNASSIGNED	168.2500N		168.2500N	T1 - 110.9	UNASSIGNED
7	TACTICAL	NIFC T6	DIV P/R	166.7750N		166.7750N	T1 - 110.9	DIVISION P/R TACTICAL
8	TACTICAL	NIFC T3	DIV Z	168.6000N		168.6000N	T1 - 110.9	DIVISION Z TACTICAL
9	TACTICAL	VFIRE 23	UNASSIGNED	154.2950N		154.2950N	T6 - 156.7	UNASSIGNED
10	COMMAND	TNF FIRE	TNF FIRE	170.6000N		164.9375N	T6 - 156.7	TO CONTACT TNF DISPATCH
11								
12								
13	A/G TAC	A/G TAC	A/G TAC	172.1375N		172.1375N		AIR TO GROUND TACTICAL
14	A/G CMD	A/G CMD	AIR TO GROUND	166.9375N		166.9375N		AIR TO GROUND COMMAND
15	MEDICAL	CALCORD	MEDICAL	156.0750N		156.0750N	T6 - 156.7	For Medical Emergencies Only
16	AIRGUARD	AIRGUARD	AIRGUARD	168.6250N		168.6250N	T1 - 110.9	EMERGENCY ONLY
17								
18								
19								
20	AIRGUARD	AIRGUARD	AIRGUARD	168.6250N		168.6250N	T1 - 110.9	EMERGENCY USE ONLY

5. Special Instructions

6. Prepared by (Communications Unit Leader): Name: \_\_\_\_\_ Signature: \_\_\_\_\_

ICS 205 - CONTROLLED UNCLASSIFIED INFORMATION//BASIC

Date/Time: 08/19/2020 1930

NIMS IAP

## ***Loyalton Fire Incident Training Program***

A TNSP is assigned to this incident and will be performing majority of duties "virtually".

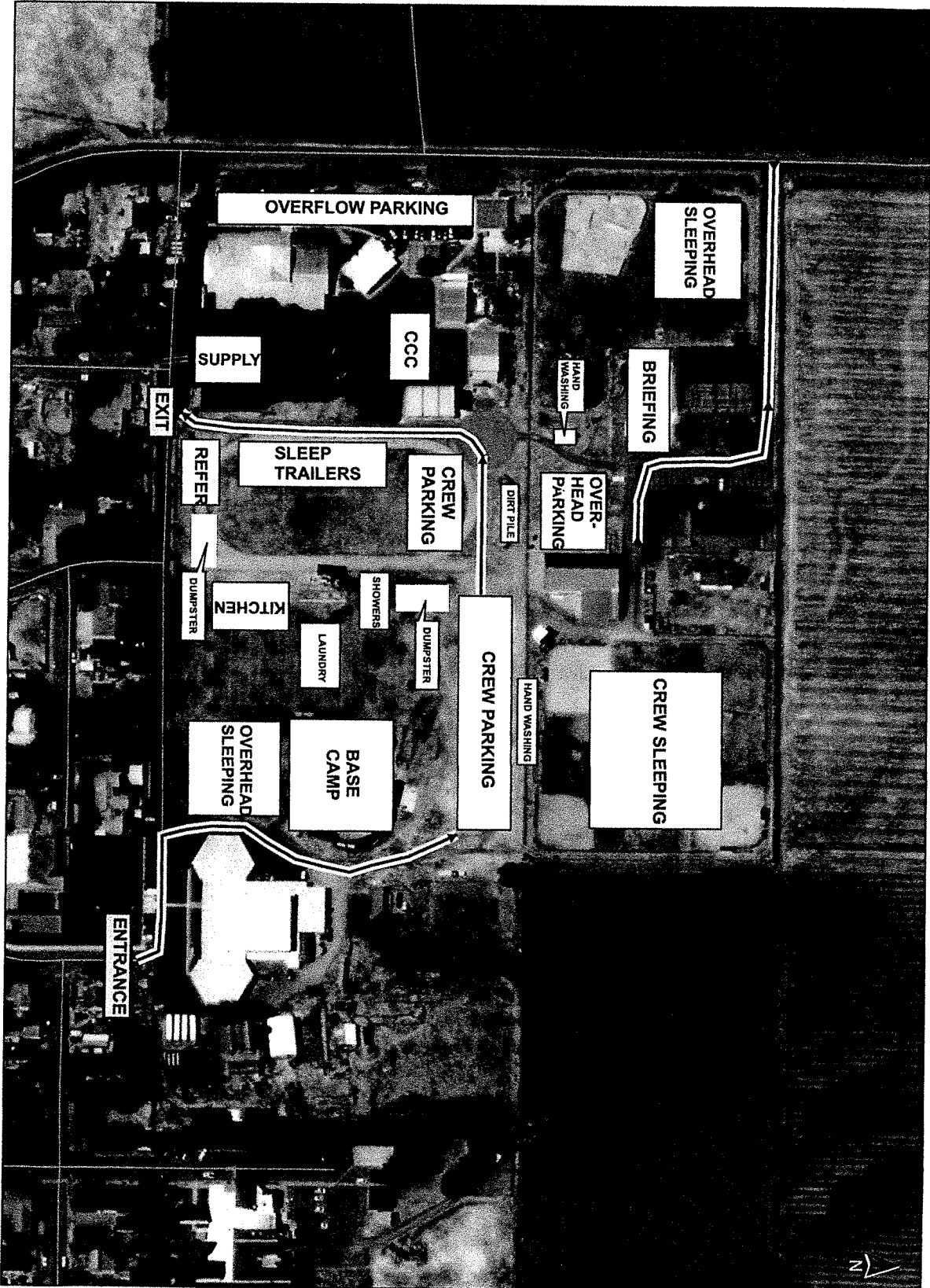
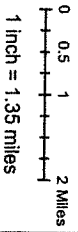
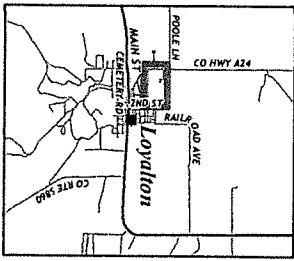
To receive documented credit for your assignment, scan the QR Code below to access and complete the Trainee Registration Form. Once registered you will receive additional instructions via text. For training related questions, call Brad Smith (TNSP) at 209-770-4809 or email

[bsmith.murfire@gmail.com](mailto:bsmith.murfire@gmail.com)



[Loyalton Fire Trainee Check-In](#)

Loyalton Fire  
CA-TNF-001600  
Incident Command Post  
Map







# California Interagency Incident Management Team 10

## Instructions for Submitting Electronic Documents to Finance Section

When submitting electronic documents to the Finance Section it is very important to follow the below file naming convention, either by uploading to the File Hub or via email, to help ensure that your document gets to the correct person for proper processing.

When submitting by email, send to: **2020.loyalton.finance@firenet.gov**

When submitting via upload to the File Hub:

1. Connect to Incident Data XX WIFI
  - a. Each file hub is named "Incident Data" plus a number (XX)
2. Browse to Incident Data webpage: <http://incidentdata> or scan QR code
3. Click "Upload Incident Data" button
4. Browse to file
5. Select to upload
6. Click "Upload File" button

### File Naming Convention

**CTR: RO# - CTR - Date (or date range) - Company Name/Crew Name/First Initial Last Name**

E-1 CTR 04222020 Big Green Company

E-1 CTR 0422-04252020 Big Green Company

C-1 CTR 04222020 Flagstaff IHC

O-1 CTR 04222020 S Bear

**Shift Ticket: RO# - Date (or date range) - Company Name**

E-1 ST 04222020 Big Green Company

E-1 ST 0422-04252020 Big Green Company

**General Message: RO# - GM - Company Name/Crew Name/First Initial Last Name - Description**

E-1 GM Big Green Company Deduction for downtime

E-2 O-1 GM S Bear Spot change of assignment

**Supply Order: RO# - SO - Company Name/Crew Name/First Initial Last Name - Description**

E-1 SO Flagstaff IHC Immediate Need Supply Order

O-1 SO S Bear Supply Order for next op period

**Check In Sheet: RO# - CIS - Company Name/Crew Name/First Initial Last Name**

E-1 CIS Big Green Company

C-1 CIS Flagstaff IHC

O-1 CIS S Bear



## Human Resource Message

### Employee Advocate

Everyone here today is playing a critical role in fighting the Loyaltan fire. We all have our assignments that must be met in order to achieve our mission of protecting life, resources and property. Of course, we cannot accomplish our mission when one of our fellow team members may be experiencing a work and/or personal matter that is impacting their ability to keep focused and remain positive.

If we witness a team member who is having a rough go at it, become their advocate. Ask them how things are going. See if they want to take a break to talk about what's going on. Give them the opportunity to vent and to share with you their concern. You may be the person that brings them back to where we need them to be to help meet our objectives.



Ryan Voelkl – HRSP: 530-457-7276





### UNIT LOG (ICS 214)

<b>1. Incident Name:</b> Loyalton	<b>2. Operational Period:</b>	Date From:	8/20/20	Date To:	8/21/20
		Time From:	1800	Time To:	0600

<b>3. Unit Name/Designators</b>	<b>4. Unit Leader (Name and ICS Position)</b>

<b>5. Personnel Assigned/Designators</b>		
NAME	ICS POSITION	HOME BASE

<b>6. Activity Log (Continue on Reverse)</b>	
TIME	MAJOR EVENTS

<b>7. Prepared By:</b>	<b>Date/Time:</b>
------------------------	-------------------

## MEDICAL PLAN (ICS 206 WF)

Medical Incident Report					
<b>FOR A NON-EMERGENCY INCIDENT, WORK THROUGH CHAIN OF COMMAND TO REPORT AND TRANSPORT INJURED PERSONNEL AS NECESSARY.</b>					
<b>FOR A MEDICAL EMERGENCY: IDENTIFY ON SCENE INCIDENT COMMANDER BY NAME AND POSITION AND ANNOUNCE "MEDICAL EMERGENCY" TO INITIATE RESPONSE FROM IMT COMMUNICATIONS/DISPATCH.</b>					
<b>Use the following items to communicate situation to communications/dispatch.</b>					
<b>1. CONTACT COMMUNICATIONS / DISPATCH</b> (Verify correct frequency prior to starting report) <i>Ex: "Communications, Div. Alpha. Stand-by for Emergency Traffic."</i>					
<b>2. INCIDENT STATUS:</b> Provide incident summary (including number of patients) and command structure. <i>Ex: "Communications, I have a Red priority patient, unconscious, struck by a falling tree. Requesting air ambulance to Forest Road 1 at (Lat./Long.) This will be the Trout Meadow Medical, IC is TFLD Jones. EMT Smith is providing medical care."</i>					
Severity of Emergency / Transport Priority	<input type="checkbox"/> <b>RED / PRIORITY 1 Life or limb threatening injury or illness. Evacuation need is IMMEDIATE</b> <i>Ex: Unconscious, difficulty breathing, bleeding severely, 2° – 3° burns more than 4 palm sizes, heat stroke, disoriented.</i> <input type="checkbox"/> <b>YELLOW / PRIORITY 2 Serious Injury or illness. Evacuation may be DELAYED if necessary.</b> <i>Ex: Significant trauma, unable to walk, 2° – 3° burns not more than 1-3 palm sizes.</i> <input type="checkbox"/> <b>GREEN / PRIORITY 3 Minor Injury or illness. Non-Emergency transport</b> <i>Ex: Sprains, strains, minor heat-related illness.</i>				
Nature of Injury or Illness & Mechanism of Injury			<i>Brief Summary of Injury or Illness (Ex: Unconscious, Struck by Falling Tree)</i>		
Transport Request			<i>Air Ambulance / Short Haul/Hoist Ground Ambulance / Other</i>		
Patient Location			<i>Descriptive Location &amp; Lat. / Long. (WGS84)</i>		
Incident Name			<i>Geographic Name + "Medical" (Ex: Trout Meadow Medical)</i>		
On-Scene Incident Commander			<i>Name of on-scene IC of Incident within an Incident (Ex: TFLD Jones)</i>		
Patient Care			<i>Name of Care Provider (Ex: EMT Smith)</i>		
<b>3. INITIAL PATIENT ASSESSMENT:</b> Complete this section for each patient as applicable (start with the most severe patient)					
Agency Affiliation: <b>(NO NAMES OR CREW NAMES)</b> Federal                      Contractor                      Local Government					
Assessment:      Age:                      Weight:                      Chief Complaint:					
(If Pertinent to Injury)      Skin Signs:                      Level of Consciousness:                      B/P:                      HR:                      RR:					
Treatment:					
<b>4. TRANSPORT PLAN:</b>					
Evacuation Location (if different): (Descriptive Location (drop point, intersection, etc.) or Lat. / Long.)      Patient's ETA to Evacuation Location:					
Helispot / Extraction Site Size and Hazards:					
<b>5. ADDITIONAL RESOURCES / EQUIPMENT NEEDS:</b>					
<i>Example: Paramedic/EMT, Crews, Immobilization Devices, AED, Oxygen, Trauma Bag, IV/Fluid(s), Splints, Rope rescue, Wheeled litter, HAZMAT, Extrication</i>					
<b>6. COMMUNICATIONS: Identify State Air/Ground EMS Frequencies and Hospital Contacts as applicable</b>					
Function	Channel Name/Number	Receive (RX)	Tone/NAC *	Transmit (TX)	Tone/NAC *
COMMAND					
AIR-TO-GRND					
TACTICAL					
<b>7. CONTINGENCY: Considerations:</b> If primary options fail, what actions can be implemented in conjunction with primary evacuation method? Be thinking ahead.					
<b>8. ADDITIONAL INFORMATION:</b> Updates/Changes, etc.					
<b>REMEMBER:</b> Confirm ETA's of resources ordered. Act according to your level of training. Be Alert. Keep Calm. Think Clearly. Act Decisively.					