

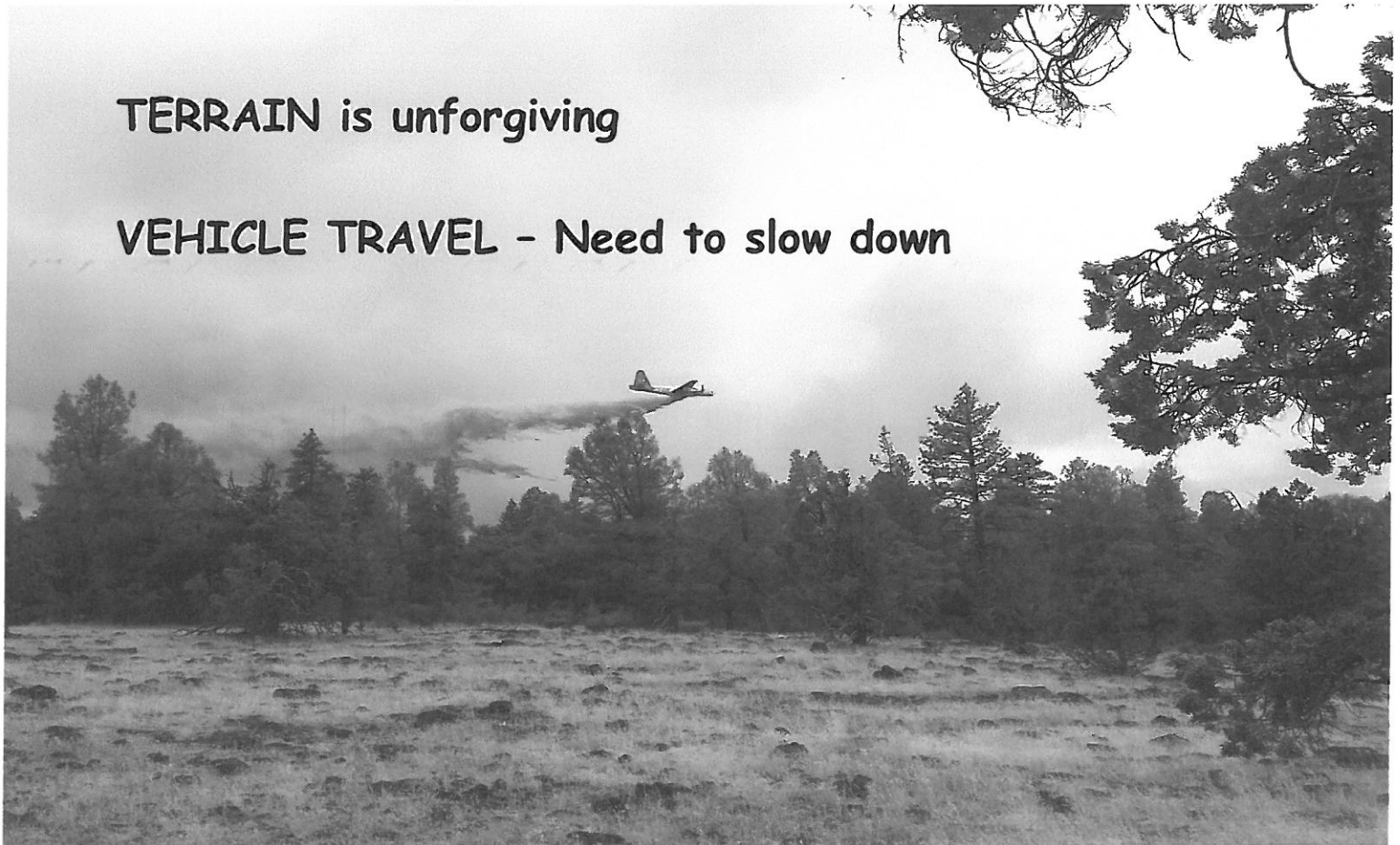
# FROG FIRE Incident Action Plan

August 2<sup>nd</sup> / 3<sup>rd</sup>, 2015

Night Shift, 1800 - 0800 hrs

**TERRAIN is unforgiving**

**VEHICLE TRAVEL - Need to slow down**



## **WEATHER & FIRE BEHAVIOR**

- Red Flag Warning till 5am Monday for Thunderstorms
- Review Pg. 21 in IRPG
- Dramatic increase in FB with outflow winds from Thunder Storms as far as 30+ miles away
- ANY wind will increase FB in this area.
- Have a Plan before this happens.
- REMEMBER...Fire will move faster than you can.
- You are only as fast as your slowest person!

**KEEP A HIGH LEVEL OF  
SITUATIONAL AWARENESS**

CA-MDF-000570 P5J0HP (0508)

MODOC NATIONAL FOREST

Northern California Incident Management Team 1

<b>INCIDENT OBJECTIVES</b>	<b>1. Incident Name</b>  Frog	<b>2. Date</b>  08/02/2015	<b>3. Time</b>  1300
----------------------------	-------------------------------------	----------------------------------	----------------------------

**4. Operational Period**  
August 02-03, 2015 NIGHT SHIFT

**CONTROL OBJECTIVES**

- 1) **Keep the Frog Fire:**
- South of Long Bell Station and 42N56 Road (County Road 56)
  - West of the 42N23 Road
  - North of the 40N03 Road (County Road 95)
  - East of the WAPA powerlines

**MANAGEMENT OBJECTIVES**

- 1) Plan and execute strategies and tactics with safety as the highest priority for incident personnel and the public.
- 2) Minimize impacts to infrastructure, private timberlands, range allotments, cultural resources, and critical habitat.
- 3) Minimize costs using the following considerations: the right plan, place, assets, duration, and time.
- 4) Provide timely and accurate information to the public, partners, and cooperators.
- 5) Promote and expect appropriate behavior based on duty, respect, and integrity.

- 6. Weather Forecast for Period**
- See attached weather forecast.

- 7. General Safety Message**
- See attached safety messages.

**8. Attachments (mark if attached)**

- |   |  |   |
|---|--|---|
| <input checked="" type="checkbox"/> Organization List - ICS 203     | <input checked="" type="checkbox"/> Medical Plan - ICS 206 | <input checked="" type="checkbox"/> Weather   |
| <input checked="" type="checkbox"/> Div. Assignment Lists - ICS 204 | <input checked="" type="checkbox"/> Incident Map           | <input checked="" type="checkbox"/> ICS215a   |
| <input checked="" type="checkbox"/> Communications Plan - ICS 205   | <input type="checkbox"/> ICS 220                           | <input type="checkbox"/> Rehab Considerations |

**9. Prepared by (Planning Section Chief)**  
Walter Herzog

**10. Approved by (Incident Commander)**  
Jay Kurth

ORGANIZATION ASSIGNMENT LIST		
1. Incident Name		
<b>Frog</b>		
2. Date	3. Time	
August 02, 2015	1200	
4. Operational Period		
<b>Night Shift August 02-03, 2015</b>		
Position	Name	
5. Incident Commander and Staff		
Incident Commander	Jay Kurth	
Deputy	Steve Burns	
Safety Officer	Michele Tanzi, Jeff Barnhart	
Information Officer	Jim Mackenson, Phyllis Swanson, Kathy Hardy	
Liaison Officer	Steve Burns	
Human Resources		
6. Agency Representative		
Agency Administrator	Amanda McAdams	
Agency Admin Rep	Joe Reinarz, Tim Davis (t)	
READ	Pete Johnston, Garret Noles (t), Megan Solus (t)	
SPI Rep	Herb Baldwin	
Beaty & Associates	Ross Brazil	
7. Planning Section		
Chief	Walter Herzog, Ed Paul	
Deputy		
Resources / Demob / Status-Check-in Unit	Gary Deboi, Rita Mustatia, Tanya Costello (t)	
Situation Unit	Tim Ritchey (t)	
Training	Dominic Panno	
CTSP	George Steel	
GIS	Matt Dickinson, James Gonzalez, Amaria Crocoll (t)	
FBAN	John Wood	
IMET		
8. Logistics Section		
Chief	Ken Kumpe	
Deputy	Brett Shurr	
Supply Unit	Ron Pierce, David Alicea (t)	
Ordering	Tamara Hanna	
Facilities Unit	Frank DelCarlo, Jeff Huhtala	
Ground Support Unit	Harry Zabel, Mike Jellison	
Communications Unit	Rick Cartoscelli	
Medical Unit	Josh Ramey	
Receiving & Distribution	Fred Johnson, Dion Nugent (t)	
Security Manager	Mike Turner	
Food Unit	Jay Westlake, Mark McGuinness (t)	
9. Operations Section		
Day Operations	Robin Wills	
Night Operations	Curt Lindstrand	
Planning Ops	Curtis Coats, Don Fregulia (t)	
a. Division/Groups - Day		
Division/Group	A	Mike Klimek, Brian Rogers (t)
Division/Group	D	Jesse Knox
Division/Group	G	Randy Jennings, Matt Radtke (t)
Division/Group	J	Mike DeMello
Division/Group	X	Leon Jeffrey, Graham Rice (t)
Division/Group		
Division/Group		
Division/Group		
b. Division/Groups - Night		
Division/Group	A	TBA
Division/Group	D	Christopher Ruff, Travis Thane (t)
Division/Group	G	TBA
Division/Group	J	TBA
Division/Group	X	TBA
Division/Group		
Division/Group		
Division/Group		
c. Air Operations Branch		
Air Operations Branch Director	Bruce Wicks	
Air Attack Supervisor	Dick Stilliha	
Air Support Supervisor	Steven Beall	
Helicopter Coordinator		
Air Tanker Coordinator		
10. Finance Section		
Chief	Lois Charlton	
Time Unit	Stephanie Garcia	
Cost Unit	Kenny Lucien	
Compensation/Claims Unit	Debbie McIntosh	
Equipment Time	Kari Linn	
Prepared by (Resource Unit Leader)		
Gary R. Deboi		

<b>DIVISION ASSIGNMENT LIST</b>			1. Branch	2. Division/Group <b>A</b>			
3. Incident Name <b>Frog Fire</b>			4. Operational Period Date: August 02- 03, 2015 Time: 1800- 0800				
5. Operations Personnel							
Operations Chief	Curt Lindstrand		Division/Group Supervisor	TBA			
Branch Director			Air Attack Supervisor No.				
6. Resources Assigned this Period							
Strike Team/Task Force/ Resource Designator	Leader	Number Persons	Trans. Needed	Drop Off PT./Time	Pick Up PT./Time		
WT Darrah Logging (E-48)		1	N	1900	0700		
7. Control Operations Hold and improve existing line. Scout for opportunities for direct and indirect line.							
Special Instructions:							
Function	Frequency	Name	Channel	Function	Frequency	Name	Channel
Command	RX167.1000N TX169.7500N	CMD 5	1 (TX Tone 146.2 T5)	Air to Ground	RX166.8750N TX166.8750N	A/G 08	
Tactical Div/Group	RX166.7250N TX166.7250N	NIFC T5	9				
Prepared by (Resource Unit Leader) Gary R. Deboi		Approved by (Planning Section Chief) Walt Herzog		Date August 02, 2015		Time 1230	

<b>DIVISION ASSIGNMENT LIST</b>			1. Branch	2. Division/Group <b>D</b>			
3. Incident Name <b>Frog Fire</b>			4. Operational Period Date: August 02- 03, 2015 Time: 1800 - 0800				
5. <b>Operations Personnel</b>							
Operations Chief		Curt Lindstrand		Division/Group Supervisor	Christopher Ruff, Travis Thane (t)		
Branch Director				Air Attack Supervisor No.			
6. <b>Resources Assigned this Period</b>							
Strike Team/Task Force/ Resource Designator	Leader	Number Persons	Trans. Needed	Drop Off PT./Time	Pick Up PT./Time		
ENG T3 #7241 (E-9)	William Leftet	3	N	1900	0700		
ENG T6 #7206 (E-27)	Duwayne Rodriguez	3	N	1900	0700		
ENG T4 ICE # 150 (E-24)	Terrence Titus	3	N	1900	0700		
Dozer Ben's (E-52)	Chad Glemim	1	N	1900	0700		
WT Darrah Logging (E-50)		1	N	1900	0700		
7. Control Operations Hold and improve existing line. Scout for opportunities for direct and indirect line.							
Special Instructions:  							
Function	Frequency	Name	Channel	Function	Frequency	Name	Channel
Command	RX167.1000N TX169.7500N	CMD 5	1 (TX Tone 146.2 T5)	Air to Ground	RX166.8750N TX166.8750N	A/G 08	
Tactical Div/Group	RX166.5500N TX166.5500N	R5 T4	6				
Prepared by (Resource Unit Leader) Gary R. Deboi		Approved by (Planning Section Chief) Walt Herzog		Date August 02, 2015		Time 1300	

<b>DIVISION ASSIGNMENT LIST</b>		1. Branch		2. Division/Group <b>G</b>			
3. Incident Name <b>Frog Fire</b>		4. Operational Period Date: August 02- 03, 2015      Time: 1800- 0800					
5. Operations Personnel							
Operations Chief		Curt Lindstrand		Division/Group Supervisor		TBA	
Branch Director				Air Attack Supervisor No.			
6. Resources Assigned this Period							
Strike Team/Task Force/ Resource Designator		Leader		Number Persons	Trans. Needed	Drop Off PT./Time	Pick Up PT./Time
ENG T6 #7204 (E-28)		Joshua O'Shields		3	N	1900	0700
ENG T6 #333 (E-29)		Mark Groves		3	N	1900	0700
ENG T4 ICE #27(E-23)		Tim Titus		3	N	1900	0700
WT Darrah Logging (E-51)				1	N	1900	0700
7. Control Operations Hold and improve existing line. Scout for opportunities for direct and indirect line.							
Special Instructions:							
Function	Frequency	Name	Channel	Function	Frequency	Name	Channel
Command	RX167.1000N TX169.7500N	CMD 5	1 (TX Tone 146.2 T5)	Air to Ground	RX166.8750N TX166.8750N	A/G 08	
Tactical Div/Group	RX167.1125N TX167.1125N	R5 T5	7				
Prepared by (Resource Unit Leader) Gary R. Deboi		Approved by (Planning Section Chief) Walt Herzog			Date August 02, 2015		Time 1315

<b>DIVISION ASSIGNMENT LIST</b>				1. Branch		2. Division/Group <b>J</b>	
3. Incident Name <b>Frog Fire</b>				4. Operational Period Date: August 02- 03, 2015      Time: 1800 - 0800			
5. Operations Personnel							
Operations Chief		Curt Lindstrand		Division/Group Supervisor		TBA	
Branch Director				Air Attack Supervisor No.			
6. Resources Assigned this Period							
Strike Team/Task Force/ Resource Designator		Leader		Number Persons	Trans. Needed	Drop Off PT./Time	Pick Up PT./Time
ENG T4 Dye Hard (E-11)		Ronald Dumont		3	N	1900	0700
ENG T6 Whitehead #101 (E-26)		Jacob Williams		3	N	1900	0700
ENG T6 Franco #5 (E-33)		Roosevelt Suppah		3	N	1900	0700
ENG T6 ICE #151 (E-40)		Bryan Rohr		3	N	1900	0700
DOZ Ben's (E-56)		Chester Langford		1	N	1900	0700
DOZ Ben's (E-89)		Greg McCarty		1	N	1900	0700
DOZ Northstate (E-90)		Maurice Rhoades		1	N	1900	0700
7. Control Operations Hold and improve existing line. Scout for opportunities for direct and indirect line.							
Special Instructions:							
Function	Frequency	Name	Channel	Function	Frequency	Name	Channel
Command	RX167.1000N TX169.7500N	CMD 5	1 (TX Tone 146.2 T5)	Air to Ground	RX166.8750N TX166.8750N	A/G 08	
Tactical Div/Group	RX168.2375N TX168.2375N	R5 T6	8				
Prepared by (Resource Unit Leader) Gary R. Deboi		Approved by (Planning Section Chief) Walter Herzog		Date August 02, 2015		Time 1300	

<b>DIVISION ASSIGNMENT LIST</b>				1. Branch		2. Division/Group <b>X</b>	
3. Incident Name <b>Frog Fire</b>				4. Operational Period Date: August 02- 03, 2015      Time: 1800 - 0800			
5. Operations Personnel							
Operations Chief		Curt Lindstrand		Division/Group Supervisor		TBA	
Branch Director				Air Attack Supervisor No.			
6. Resources Assigned this Period							
Strike Team/Task Force/ Resource Designator	Leader	Number Persons	Trans. Needed	Drop Off PT./Time	Pick Up PT./Time		
UNSTAFFED							
7. Control Operations Hold and improve existing line. Scout for opportunities for direct and indirect line.							
Special Instructions:							
Function	Frequency	Name	Channel	Function	Frequency	Name	Channel
Command	RX167.1000N	CMD 5	1	Air to Ground	RX166.8750N	A/G 08	
	TX169.7500N		(TX Tone 146.2 T5)		TX166.8750N		
Tactical Div/Group	RX166.7750N TX166.7750N	NIFC T6	10				
Prepared by (Resource Unit Leader) Gary R. Deboi		Approved by (Planning Section Chief) Walter Herzog		Date August 02, 2015		Time 1315	



## Spot Forecast for FROG Fire

National Weather Service Medford

509 AM PDT Sun Aug 2 2015

...RED FLAG WARNING IN EFFECT UNTIL 5 AM PDT MONDAY...

.DISCUSSION...AN UPPER LEVEL LOW REMAINS OFFSHORE AND CONTINUES TO PUMP MOISTURE AND INSTABILITY NORTHWARD ACROSS OUR AREA. THERE ARE A FEW SHORTWAVES MOVING NORTH AS WELL, WHICH WILL PRODUCE SCATTERED SHOWERS AND THUNDERSTORMS NEAR THE INCIDENT TODAY. STORMS WILL BE ON THE DRY SIDE THIS MORNING, THEN BECOME WETTER AS WE GET LATER IN THE DAY. WATCH FOR GUSTY AND ERRATIC WINDS NEAR ANY THUNDERSTORMS TODAY. STORMS WILL DECREASE OVERNIGHT, AND THEN MONDAY WILL BE MORE STABLE.

.TODAY...

SKY/WEATHER.....SCATTERED SHOWERS AND ISOLATED THUNDERSTORMS THIS MORNING, THEN SCATTERED THUNDERSTORMS THIS AFTERNOON.

MAX TEMPERATURE.....84-88.

MIN HUMIDITY.....23-26 PERCENT.

EYE LEVEL WINDS.....SOUTHWEST 2-4 MPH THIS MORNING INCREASING TO 4-7 MPH WITH GUSTS TO 10 MPH IN THE AFTERNOON. GUSTY AND ERRATIC WINDS NEAR THUNDERSTORMS.

CWR.....20 PERCENT.

LAL.....3.

WIND (20 FT).....SOUTHWEST 3-6 MPH THIS MORNING INCREASING TO 5-10 MPH WITH GUSTS TO 15 MPH IN THE AFTERNOON. GUSTY AND ERRATIC WINDS NEAR THUNDERSTORMS.

.TONIGHT...

SKY/WEATHER.....SCATTERED THUNDERSTORMS IN THE EVENING, THEN PARTLY CLOUDY WITH ISOLATED SHOWERS AND THUNDERSTORMS OVERNIGHT.

MIN TEMPERATURE.....55-58.

MAX HUMIDITY.....65-70 PERCENT.

EYE LEVEL WINDS.....LIGHT AND VARIABLE, EXCEPT GUSTY AND ERRATIC NEAR THUNDERSTORMS.

CWR.....20 PERCENT.

LAL.....3.

WIND (20 FT).....LIGHT AND VARIABLE, EXCEPT GUSTY AND ERRATIC NEAR THUNDERSTORMS.

.MONDAY...

SKY/WEATHER.....PARTLY CLOUDY.

MAX TEMPERATURE.....83-86.

MIN HUMIDITY.....18-22 PERCENT.

EYE LEVEL WINDS.....LIGHT AND VARIABLE, BECOMING SOUTHWEST 3-6 MPH IN THE AFTERNOON.

CWR.....0 PERCENT.

LAL.....1.

WIND (20 FT).....LIGHT AND VARIABLE, BECOMING SOUTHWEST 5-10 MPH IN THE AFTERNOON.

## FIRE BEHAVIOR FORECAST

<b>FORECAST NUMBER:</b> 4	<b>TYPE OF FIRE:</b> Wildland Fire
<b>FIRE NAME:</b> Frog	<b>OPERATIONAL PERIOD:</b> 8/2 to 8/3, 2000 to 0800
<b>DATE ISSUED:</b> 8/2/15	<b>TIME ISSUED:</b> 1100
<b>UNIT:</b> Modoc National Forest	<b>SIGNED:</b> /s/ John Wood FBAN

### INPUTS

**WEATHER SUMMARY:** Red Flag Warning Until 0500 Monday.

An upper trough will remain offshore and continue to pump mid level moisture and instability Northward across our area. There are a few shortwaves moving North as well which will produce scattered showers and thunderstorms near the incident today. Storms will be on the dry side this morning then become wetter as we get later in the day. Watch for gusty erratic winds near any thunderstorms. Storms will decrease overnight, Monday will be more stable.

Expect low temperatures to be between 55-58 degrees. Maximum humidity, between 65-70%,. Winds (Eye level) light and variable winds. Gusty and erratic winds expected near thunderstorms.

**Haines Index:** 3

**Burning Index:** 52 **ERC:** 69

### OUTPUTS

**GENERAL:** Torching will be possible early in the shift, torching may lead to spotting problems. Wind speeds will be a little higher than they have over the last few days and fire behavior will respond accordingly in area more open to the wind. Higher humidity and lower temps may help moderate fire behavior in more sheltered areas on the fire. Live fuel Moistures are around 113% this is low and will increase fire behavior in the shrub fuels. In the grass fuel models expect rates of spread 3-5 ch/hr and flame lengths around 1 foot ft. In the shrub fuels expect rates of spread up to 20-30 ch/hr and flame lengths 6-8 ft. In the timber litter expect rates of spread 3-6 ch/hr with flame lengths 2-3 ft. Outflow winds 40 mph and above expect rates of spread to rapidly increase in all fuel models with rates of spread over 100 ch/hr possible.

**SPECIFIC:**

Fine fuel moisture 9% Probability of ignition down to 31% Spot distance around ½ mile with the strongest forecast winds.

**Division A:** Forecast winds are favorable to the Division. Heavy fuels will continue to burn down through the evening. Spotting potential should be reduced with probability of ignition lowering to 31%.

**Division D:** Heat will remain active inside lines as heavy fuels burn down. During the shift unburned fuels could initiate torching, lofting embers, spotting could occur up to ½ mile from the source.

**Division G:** Forecast wind will highlight spotting potential. Fuels will remain receptive to spots well into the shift but will lower to 31% after midnight. Consistent wind especially in brush fuels will produce persistent fire spread which may need support from equipment to be effective.

**Division J:** Spotting should be a concern on the Division with forecast wind direction although probability of ignition will be low. Consistent brushy fuels may need support from equipment to be effective with suppression action. Jackpots will continue to hold heat.

**Division X:** Spotting should be a concern on the Division with forecast wind direction although probability of ignition will be low. Fire within control lines will remain active as fuels burn down. Fuel concentrations will continue to hold heat throughout the shift.

### AIR OPERATIONS

Cloud cover and smoke may combine for areas of poor visibility at the beginning of the shift. Toward the end of shift low mixing heights and cloud cover will combine reducing visibility over the incident.

### Safety Message

Maintain good situational awareness of your division and adjoin divisions. Challenging small scale topography and switching winds can rapidly change the fire ground scene. Emphasize good communications and Fire Order #7.

INCIDENT RADIO COMMUNICATIONS PLAN			Incident Name <b>FROG CA-MDF-000570</b>			Date/Time Prepared 08-02-15 0930			Operational Period Date/Time NIGHT SHIFT 08-02-15		
Only frequencies listed on this 205 are authorized for use on this incident.						Radio programmers accept all responsibility for the use of unauthorized frequencies.					
Ch #	Function	Channel Name	Assignment	RX Freq N or W	RX Tone	TX Freq N or W	TX Tone	Mode	Remarks		
1	NIFC CMD 5	CMD 5	ALL DIVISIONS	167.1000N		169.7500N	146.2 T5	A	ON ROUND MTN		
2	NIFC CMD 12	CMD 12	UNASSIGNED	173.0375N		167.3250N	127.3 T12	A	TIMBER MTN		
3	NIFC SPCL	NONE	UNASSIGNED					A	FUTURE USE		
4	BACKUP CMD	MDFFOR 5	ALL DIVISIONS	170.7375N		164.9875N	146.2	A	GROUSE MTN REPEATER		
5	BACKUP CMD	MDFFOR 7	ALL DIVISIONS	170.7375N		164.9875N	167.9	A	RED SHALE BUTTE REPEATER		
6	TACTICAL	R5 T4	DIVISION D	166.5500N		166.5500N		A			
7	TACTICAL	R5 T5	DIVISION G	167.1125N		167.1125N		A			
8	TACTICAL	R5 T6	DIVISION J	168.2375N		168.2375N		A			
9	TACTICAL	NIFC T5	DIVISION A*	166.7250N		166.7250N		A	*DIV 'A' HAD USED NIFC TAC 2		
10	TACTICAL	NIFC T6	DIVISION X*	166.7750N		166.7750N		A	*DIV 'X' HAD USED NIFC TAC 2		
11	TACTICAL	NIFC T7	UNASSIGNED	168.2500N		168.2500N		A			
12								A			
13	PRIMARY AIG	AIG 43	ALL DIVISIONS	167.6000N		167.6000N		A			
14	SECONDARY AIG	AIG 08	ALL DIVISIONS	166.8750N		166.8750N		A	<b>USE THIS A \ G FOR TODAY'S SHIFT</b>		
15	CALCORD	MED HELO CONTACT	ALL DIVISIONS	156.0750N		156.0750N	156.7	A			
16	URGENT AIR CONTACT	AIR GUARD	ALL DIVISIONS	168.6250N		168.6250N	110.9	A	USE ONLY FOR URGENT AIRCRAFT IF HAND PROGRAMMING USE TONE 1		
Prepared by				Incident Location							
Rick Cartoscelli, COML NorCal IMT 1				MODOC NATIONAL FOREST							

# MEDICAL PLAN (ICS 206 WF)

1. Incident/Project Name				2. Operational Period							
<b>FROG FIRE</b>				Date/Time <b>8/02/15 1800-0800</b>							
3. Ambulance Services											
Name		Location		Phone & EMS Frequency		Advanced Life Support (ALS) Yes No					
Medic 21 – Incident Ambulance		Longbell staging		Contact on Command		X					
4. Air Ambulance Services											
Name		Phone		Type of Aircraft & Capability							
Emergency Air Lift	30 min eta	911 or 800-804-4911		Air Ambulance – Klamath Falls, OR							
Mountain Life Flight	30 min eta	911 or 530-257-2444		Air Ambulance – Susanville, CA							
CHP	50 min eta	911 or 530-225-2041		ALS Hoist – Redding, CA							
CANG 825	50 min eta	911 (Must be ordered through ECC)		Hoist Rescue – Redding, CA Day/Night							
H-527		Contact Helibase 805-886-5850		Incident ship – Helibase N41°29.537 x W120°58.218							
5. Hospitals											
Name & Level		GPS Datum – WGS 84 Degrees Decimal Minutes		Travel Time Air Gnd		Phone		Helipad Yes No		Address	
Mayer's Memorial Hospital		Lat:	N41°01.47		10 min	1:30 hrs	530-336-5511	X		43563 Hwy 299E, Fall River Mills, CA	
		Long:	W121°25.43								
		VHF:									
Modoc Medical Center		Lat:	N41°28.48		10 min	1:10 hrs	530-233-5131	X		228 McDowell, Alturas, CA	
		Long:	W120°32.42								
		VHF:									
Shasta Regional Medical Center		Lat:	N40°35.08		40 min	2:45 hrs	530-244-5353	X		1100 Butte, Redding, CA	
		Long:	W122°23.25								
		VHF:									
UC Davis Level I Trauma/Burn Center		Lat:	N38°33.17		1.5 hrs	6 hrs	916-734-3636 916-734-3790	X		2315 Stockton Blvd. Sacramento, CA	
		Long:	W121°27.05								
		VHF:									
6. Division / Crew Pre-plan. Update and discuss with assigned resources daily											
Crew EMTs & Equipment											
Fireline EMTs & Location Adv. Life Support?											
Air Hoist site: Lat: / Long:											
Helispot: Lat: / Long:											
Alternate no-fly plan:											
7. Remote Aid Stations											
<b>FROG Medical Unit– ICP Ambrose</b> N41°29.537 W120°58.218				Point of Contact:				MEDL – Josh Ramey (Cell: 530-277-1213)			
				EMS Responders & Capability:				Frontline Medical – Advanced Life Support			
				Equipment Available on Site:				Medical supplies			
				Ambulance ETA :				Air – 30 min. Ground – 35 min.			
8. Prepared By (Medical Unit Leader)				9. Date/Time		10. Reviewed By (Safety Officer)				11. Date/Time	
Josh Ramey – MEDL 530-277-1213 <i>Joshua Ramey</i>				8/2/15 1000		Michele Tanzi <i>Michele Tanzi</i>				8/2/15 1000	

# MEDICAL PLAN (ICS 206 WF)

## Medical Incident Report

**Use items one through nine to communicate situation to communications/dispatch.**

### 1. CONTACT COMMUNICATIONS DECLARE: "MEDICAL EMERGENCY" OR "NON-EMERGENCY MEDICAL TRANSPORT"

*Ex: "Communications, Div. Alpha. Stand-by for a medical emergency on Div. Alpha" (If life threatening request designated frequency be cleared for emergency traffic.)*

### 2. INCIDENT STATUS: Provide incident summary and command structure.

- **Nature of Injury/Illness** Describe the injury (Ex: Broken leg with bleeding) \_\_\_\_\_
- **Incident Name** Geographic Name + "Medical" (Ex: Trout Meadow Medical) \_\_\_\_\_
- **Incident Commander (Division Sup. or designee)** Name of IC \_\_\_\_\_
- **Patient Care** Name of Care Provider (Ex: EMT Smith) \_\_\_\_\_

### 3. INITIAL PATIENT ASSESSMENT: Complete this section for each pt. This is only a brief, initial assessment. Provide additional pt. info after completing this report.

- **Number of Patients:** \_\_\_\_\_ - **Male / Female:** \_\_\_\_\_ - **Age:** \_\_\_\_\_ - **Weight:** \_\_\_\_\_
- **Conscious?**  YES  NO = MEDEVAC! - **Breathing?**  YES  NO = MEDEVAC!
- **Mechanism of Injury** What caused the injury? \_\_\_\_\_
- **Location, Lat/Long** (Datum WGS84) Ex: N 40° 42.45' x W 123° 03.24' \_\_\_\_\_

### 4. SEVERITY OF EMERGENCY, TRANSPORT PRIORITY

SEVERITY	TRANSPORT PRIORITY
<input type="checkbox"/> <b>URGENT-RED</b> Life threatening injury or illness. <i>Ex: Unconscious, difficulty breathing, bleeding severely, 2° - 3° burns more than 4 palm sizes, heat stroke, disoriented.</i>	Ambulance or MEDEVAC helicopter. Evacuation need is <b>IMMEDIATE.</b>
<input type="checkbox"/> <b>PRIORITY-YELLOW</b> Serious Injury or illness. <i>Ex: Significant trauma, not able to walk, 2° - 3° burns not more than 1-2 palm sizes.</i>	Ambulance or consider air transport if at remote location. Evacuation may be <b>DELAYED.</b>
<input type="checkbox"/> <b>ROUTINE-GREEN</b> Not a life threatening injury or illness. <i>Ex: Sprains, strains, minor heat-related illness.</i>	Non-Emergency. Evacuation considered <b>Routine of Convenience.</b>

### 5. TRANSPORT PLAN:

**Air Transport:** (Agency Aircraft Preferred)

- Helispot                       Short-haul/Hoist                       Life Flight                       Other

**Ground Transport:**

- Self-Extract                       Carry-Out                       Ambulance                       Other

### 6. ADDITIONAL RESOURCE/EQUIPMENT NEEDS:

- Paramedic/EMT(s)     SKED/Backboard/C-Collar     Crew(s)                       Burn Supplies                       Oxygen  
 Trauma Bag                       Medication(s)                       IV/Fluid(s)                       Cardiac Monitor/AED  
 Other (i.e. splints, rope rescue, wheeled litter)

### 7. COMMUNICATIONS:

- Run Medical Emergency on Command                      - Coordinate with air ambulance on CALCORD tone 6

### 8. EVACUATION LOCATION:

- **Lat/Long** (Datum WGS84) *EX: N 40 42.45' x W 123 03.24'* \_\_\_\_\_
- **Patient's ETA to Evacuation Location:** \_\_\_\_\_
- **Helispot/Extraction Size and Hazards:** \_\_\_\_\_

### 9. CONTINGENCY: If primary options fail, what actions can be implemented in conjunction with primary evacuation method? Be thinking ahead...

\_\_\_\_\_

\_\_\_\_\_

**REMEMBER:** -Confirm ETA's of resources ordered                      -Act according to your level of training  
 - If air or ground ambulance is DELAYED: Package and transport patient to rendezvous with incoming Ambulance.  
 Re-route EMS helicopter to rendezvous point as appropriate.

# Frog Fire Incident Risk Analysis (215A)

Div.	LCES Analysis of Tactical Applications (Hazardous Actions or Conditions)	LCES Mitigations/Warnings/Remedies
All	Communications	Ensure you have the <b>most current communication plan</b> for this shift. Give and receive communication feedback as to effectiveness. Use Human repeaters where necessary. <b>A/G secondary will be used today...166.8750</b>
All	Hydration	Drink water before, during, and after shift. Drink water in addition to sports drinks in a 2 waters to 1 electrolyte ratio. <b>Electrolyte drinks are best consumed as is, not diluted.</b>
All	Potential difficulty in establishing lookouts due to terrain features	<b>Round Mountain</b> to the west of the fire is potentially the <b>best lookout position</b> . Scout for vistas with good line of site. Get intel from previous shifts resources.
All	Escape Routes to Safety Zones	<b>Continue to re-assess your position to your known Escape Routes to Safety Zones.</b> Identify Trigger Points with Operations and Division Supervisors and make them known to all!
All	Difficult terrain conditions & providing for emergency medical needs.	Review Med Plan before the need arises. <b>Limit high risk activities.</b> Identify Medivac sites and provide info to your DIVS. Ensure that each crewmember is aware of the relatively unique hazard associated with this country (lava tubes & fissures, "flower pots" )
All	Snakes and other wildlife	ID EMT personnel on crews. If stung or bit, reactions could become extreme within minutes. <b>Evaluate and notify Division Supervisor immediately!</b> Leave all wildlife alone!
All	Fire Behavior with Thunderstorms	Dramatic Increase in FB with outflow winds as far as 30+ miles away. Review pg21 in IRPG. <b>Have a plan before you need it.</b>
All	Hazard Trees	Mitigate if safe to do so. <b>Limit exposure of personnel.</b> <b>Use qualified fallers</b> and maintain a clearance of non-essential personnel of 2 ½ times the tree height.
All	Working around heavy equipment	Maintain safe working distances from dozers. Utilize observers or spotter. <b>Have effective communications with the operator when in close proximity.</b>
All	Driving	Freshly graded roads lend themselves to higher speeds. <b>Initial attack phase is over.</b> Take your time getting to and from the fire safely. <b>Drive slowly and defensively.</b> Distance your vehicles when roads surfaces are dusty for better visibility.

Date & Time Prepared: August 2nd, 2015 @ 1100 hrs. Prepared By: Michele Tanzi, SOF1 & Jeff Barnhart, SOF2.  
Operational Period: August 2<sup>nd</sup>/3<sup>rd</sup>, 2015 Night Shift, 1800 - 0800 hrs.

CA-MDF-000570 P5JOHP (0508)

**Modoc National Forest**

Northern California Incident Management Team 1



Today's discussion is from the  
LCES (Lookouts, Communication, Escape  
Routes, and Safety Zones) Category.



## COMMUNICATIONS

Effective communication is a critical backbone of safe and successful operations.

- Discuss the factors that can affect radio communication at the incident.
  - Knowledge of the radio issued to the individuals
  - Net control, frequencies
  - Line-of-sight restrictions
  - Antenna polarization effect (direction of the antenna)
  - Minimizing noise interference
  - Wide band narrow band
  
- How can you mitigate potential problems?
  - Implement effective communication procedures--be brief, clear, concise, and to-the-point.
  - Give a good comprehensive briefing. (Refer to the Briefing Checklist inside the back cover of the Incident Response Pocket Guide.)
  - Confirm that relayed information is received, acknowledged, and understood.
  - Keep a continuous information flow (e.g., updates on weather, fire behavior, work progress; changes in strategy/tactics; arrival of additional resources; solicit feedback).
  - Establish emergency check-in procedures.
  - Provide a minimum of 4 radios per 20-person firefighter crew.
  
- The Five Communication Responsibilities for All Firefighters:
  - Brief others
  - Debrief your actions
  - Communicate hazards to others
  - Acknowledge messages
  - Ask if you don't know

### References:

Incident Response Pocket Guide

Fireline Handbook

Interagency Standards for Fire and Fire Aviation Operations

"LCES and Other Thoughts" by Paul Gleason

---

**Have an idea? Have feedback? Share it.**

ONLINE | MAIL: 6 Minutes For Safety Task Group • 3833 S. Development Ave • Boise, ID 83705 | FAX: 208-387-5250

6 Minutes Home

## TRAINING SPECIALIST MESSAGE

### *Calling all trainees!!*

If you are here as a trainee and have not checked in with the Training Specialist please do so right away.

I am located at the ICP, in the Plans Trailer.

Bring your Task Book and Red Card with you.

### *Training watch out:*

Your home unit sent you out as a trainee, and the position is not on your red card.



"The palest ink is better than the best memory". Chinese Proverb

*Dominic Panno*  
*Incident Training Specialist*



Date & Time Order was placed:		Order #	Location & Time for Delivery (DIV,LZ,DP,Lat Long)		Mode of delivery
		(DIVS+#)			(Driven/Helo/DIVS to Pick up)
			Lat:		
			Long:		
Order received in Communications by (Name):					Time:
Order shipped to line by (Name): (Send this sheet to the line with the order)					Time:
#	Item				
1	<b>1,000 Foot Hose Lay includes the following: Amount _____</b>				
	10, 100'x1½" Rolls Hose; 10, 100'x1" Rolls Hose; 10, 1½" Gated Wyes; 10, 1½" to 1" reducers; 10, 1" nozzles				
2	<b>2,000 Foot Hose Lay includes the following: Amount _____</b>				
	20, 100'x1½" Rolls Hose; 20, 100'x1" Rolls Hose; 20, 1½" Gated Wyes; 20, 1½" to 1" reducers; 20, 1" nozzles				
3	<b>3,000 Foot Hose Lay includes the following: Amount _____</b>				
	30, 100'x1½" Rolls Hose; 30, 100'x1" Rolls Hose; 30, 1½" Gated Wyes; 30, 1½" to 1" reducers; 30, 1" nozzles				
#	Item	Amount	#	Item	Amount
4	Hose (50') garden, 3/4"		30	Gas Unleaded (Gallons)	
5	Hose (100'), 1"		31	Oil 2 cycle, (Pints)	
6	Hose (100'), 1½"		32	Bar Oil (Qts)	
7	Nozzle, Garden, 3/4"		33	Drip Torch ea	
8	Nozzle, Forester, 1"		34	Drip torch mix 3.5:1.5 (gallon)	
9	Nozzle, KK Type, 1"		35	Fusees (Boxes or cases)???	
10	Nozzle, KK Type, 1½"		36	Flare Gun Rounds (12/BX)	
11	Wye, Gated, 3/4"		37	Cartridge #6 purple (box)	
12	Wye, Gated, 1"		38	Batteries "AA" PKGs(24/PKG)/BX	
13	Wye, Gated, 1½"		39	Ribbon, Flagging (Specify Color)*	
14	Inline-Tee, 1x1x3/4"		40	Water, Cubies	
15	Inline-Tee, 1x1x1"		41	Water, Bottled, Cases	
16	Inline-Tee (1½" X 1")		42	Gatorade	
17	Reducer, 1" X 3/4"		43	MRE's (12/BX)	
18	Reducer, 1½" X 1"		44	Heavy Mill Plastic	
19	Increaser, 3/4" X 1"		45	Washcloth, waterless, cleansing	
20	Increaser, 1" X 1½"		46	Wrap, Structure 54"x300'	
21	Foam 5 gal		47	Sprinkler Kit	
22	Foam 4 oz (For Backpack Pump)		48	Mark 3 Pump	
23	Backpack Pump		49	Mark 3 Pump Kit- w/10 gal mixed fuel	
24	Pumpkin (Gallons?)		50	Chainsaw Kit	
25	Porta-Tank (Gallons?)		51	Mop-Up Kit, 3-Wand	
26	Shovel		52	Pump Kit, Lightweight, 2 Cycle	
27	Pulaski		53	Gas, Raw and 2 qts 2-cycle oil, ea	
28	Combi Tool		54	Lightweight Pump Kit-Cache w/5gal fuel	
29	McCloud		55	Gas, raw (gal) and 1 qt 2-cycle oil, ea.	
Notes:			Notes:		



## INCIDENT WATER USE LOG

DATE	WATER SOURCE	QUANTITY	E NUMBER	DRIVER

**Use this log to track water use.**

Include the following information:

- Date water was received
- Water Source (Where you got the water)
- Gallons collected
- Resource Order number of resource collecting water
- Driver Name

**Return this form to FINANCE**

(Additional forms available in Finance)



## WE NEED YOUR PICTURES!

If you have photos or video from this fire please stop by the PIO Office in the ICP or scan the QR code below and it will take you to our email and you can send your stuff directly to us and we can post them to Inciweb and our Facebook and Twitter pages.

Just remember:

- Be safe when taking pictures
- Make sure Firefighters are wearing all PPE
- Give us the basics of the photo such as time and date, location, crew or person shown, etc.
- Show your Agency in a positive light be professional.
- Do not take photos of accidents, injuries, near misses, etc.

### Nor Cal Team 1 PIO Email



UNIT LOG		1. Incident Name	2. Date Prepared	3. Time Prepared
4. Unit Name/Designators		5. Unit Leader (Name and Position)		6. Operational Period
7. Personnel Roster Assigned				
Name	ICS Position	Home Base		
8. Activity Log				
Time	Major Events			
9. Prepared by (Name and Position)				