



# Dodge Fire

## Incident Action Plan

August 8, 2015

Day Operations


R-1 Dodge

CA-NOD-003806

J0SD


---

# INCIDENT OBJECTIVES (ICS 202)

<b>1. Incident Name:</b>		<b>2. Operational Period:</b> DAY			
R-1 DODGE		Date/Time From: 08/08/2015 0600 SAT		Date/Time To: 08/08/2015 1800 SAT	
<b>3. Objective(s):</b>					
<p><b>Firefighter and public safety will be the number one concern</b> in all fire management activities</p> <p>-Assure that safety of firefighter, aviation, support personnel, and the public is the highest priority at all times for the duration of the incident</p> <p>Protect all structures, private lands and values at risk without compromising firefighter and public safety.</p> <p>Utilize resources cost-effectively</p> <p>Protect all <b>sage grouse habitat ,cultural resources, wilderness study areas and recreation areas.</b></p>					
<b>4. Operational Period Command Emphasis:</b>					
<p>Keep the Fire within the following boundaries</p> <ul style="list-style-type: none"> <li>- East of Tuledad Road</li> <li>- South of Tuledad Canyon</li> <li>- West of California/Nevada State Line</li> <li>- North of Buckhorn Road</li> </ul>					
<b>General Situational Awareness:</b>					
<p>Due to drought, wind, and fuel conditions the fire behavior has been moderate to high. Fire growth is mainly high due to current and predicted weather conditions for the next several days</p> <p>Stay alert to changing weather conditions as a low pressure system moves into the area</p>					
<b>5. Site Safety Plan Required?</b> Yes <input type="checkbox"/> No <input checked="" type="checkbox"/>					
<b>Approved Site Safety Plan(s) Located at:</b>					
<b>6. Incident Action Plan</b> (the items checked below are included in this Incident Action Plan):					
<input checked="" type="checkbox"/> ICS 202 <input checked="" type="checkbox"/> ICS 203 <input checked="" type="checkbox"/> ICS 204 <input checked="" type="checkbox"/> ICS 205 <input type="checkbox"/> ICS 205A <input type="checkbox"/> ICS 206		<input type="checkbox"/> ICS 207 <input type="checkbox"/> ICS 208 <input checked="" type="checkbox"/> ICS 220 <input checked="" type="checkbox"/> Map/Chart <input checked="" type="checkbox"/> Weather Forecast/Tides/Currents		<b>Other Attachments:</b> <input type="checkbox"/> _____ <input type="checkbox"/> _____ <input type="checkbox"/> _____ <input type="checkbox"/> _____	
<b>7. Prepared by:</b> MAGENHEIMER		<b>Position/Title:</b> PSC3		<b>Signature:</b>	
<b>8. Approved by Incident Commander:</b>		Name: <i>Wate Palmer</i>		Signature: 	
ICS 202		IAP Page		Date/Time: 08/07/2015 1800	



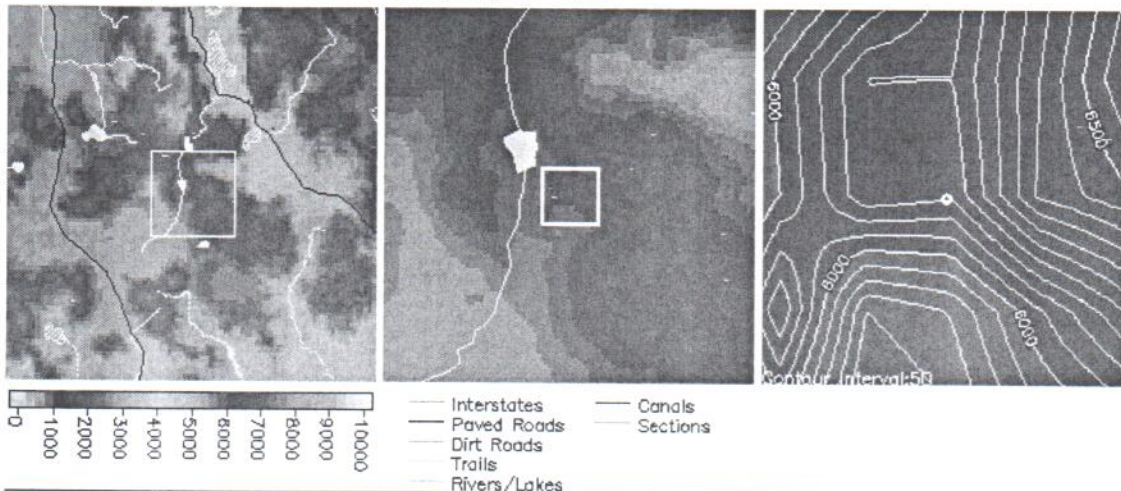
## ORGANIZATION ASSIGNMENT LIST (ICS 203)

<b>1. Incident Name:</b>		<b>2. Operational Period: DAY</b>	
R-1 DODGE		Date/Time From: 08/08/2015 0600	Date/Time To: 08/08/2015 1800
		SAT	SAT
<b>3. Incident Commander(s) and Command Staff:</b>		LOGISTICS	
IC	NATE RASNER MARK WINKLEMAN (T)	<b>7. Operations Section:</b>	
IC	LUIS GOMEZ (T)	DAY OPS SECTION CHIEF	MIKE HEIKKA
SAFETY OFFICER	SCOTT FRASER	PLANNING OPS	RYAN SOMMERS
INFORMATION OFFICER	BETH KENNA MARK REGAN	OPS SECTION CHIEF	
LIAISON OFFICER		DEPUTY OPS SECTION CHIEF	
		STAGING AREA	
<b>4. Agency/Organization Representative(s):</b>			
<b>Agency/Organization</b>	<b>Name</b>	<b>7b. Air Operations Branch:</b>	
DISTRICT MANAGER	NANCY HAUG	AIR OPS BRANCH DIRECTOR	CHRIS INGRAM
BLM AREA REP	EMILY RYAN	AIR ATTACK SUPERVISOR	
BLM AREA REP	DENNIS SYLVIA	AIR SUPPORT SUPERVISOR	
DFMO NORCAL DISTRICT	WALTER HERZOG	HELICOPTER COORDINATOR	
<b>5. Planning Section:</b>		AIR TANKER COORDINATOR	
CHIEF	CHRIS MAGENHEIMER	<b>8. Finance/Administration Section:</b>	
DEPUTY		CHIEF	BONNIE KENNEDY
RESOURCES UNIT	TERRE PEARSON RAMIREZ	EQUIPMENT COSTS	DONNA COONEY
SITUATION UNIT		TIME UNIT	ZANDRA ZAVALZA
DOCUMENTATION UNIT			
DEMOBILIZATION UNIT			
FIRE BEHAVIOR ANALYST			
HUMAN RESOURCE SPECIALIST			
TRAINING SPECIALIST			
GIS SPECIALIST	FOREST SCHAFER		
COMPUTER SPECIALIST			
INCIDENT METEOROLOGIST			
<b>6. Logistics Section:</b>			
CHIEF	JUSTIN LANGFORD EMILY LUTZ		
CHIEF	BOBBY WILLIS (T)		
SUPPLY UNIT			
FACILITIES UNIT			
GROUND SUPPORT UNIT			
COMMUNICATIONS UNIT	RANDY WILLIAMS MARK DOWNING (T)		
MEDICAL UNIT	SKY DWINELL MIKE PORTER (T)		
SECURITY UNIT			
FOOD UNIT	DILLE, LOYD C		
<b>9. Prepared By:</b>	<b>Name:</b> MAGENHEIMER	<b>Position/Title:</b> PSC 3	<b>Signature:</b>
ICS 203	IAP Page	Date/Time: 08/07/2015 1815	

**Dodge (WILDFIRE)** (Requested: 2236 PDT 8/7/15)

Forecast complete at 2259 PDT 8/7/15

Requested by: Sierra Front IMT Phone:(702) 979-1765



**Location:** Legal: Lat/Lon:40 57 29/120 6 32 Quad:  
 Calculated:(40°57'29"N 120°6'32"W) (BUCKHORN LAKE CA)  
 Elevation:6100-7300 Drainage:unknown Aspect:South Size:unknown  
 Fuel Type:Sage Juniper (Sheltering Unknown)

**Observations:**

Place Elev Time Wind Temp Wetbulb RH Dewpt Remarks

**Requested Parameters**

**Remarks**

... Clouds / Weather      Need by 2330 tonight for IAP prep  
 ... Temperature  
 ... Relative Humidity  
 ... 20 Foot Wind  
 ... Smoke Dispersion

**FORECAST:**

IF CONDITIONS BECOME UNREPRESENTATIVE,  
 CONTACT THE NATIONAL WEATHER SERVICE.  
 DISCUSSION...LINGERING MOISTURE BEHIND FRIDAY'S LOW PRESSURE SYSTEM  
 WILL PROVIDE SLIGHT CHANCES FOR ISOLATED SHOWERS AND THUNDERSTORMS  
 THIS AFTERNOON. A DRIER AIRMASS IS EXPECTED EARLY NEXT WEEK ALONG  
 WITH NEAR SEASONABLE TEMPERATURES. ANOTHER LOW PRESSURE MAY PROVIDE  
 CONTINUED DRY CONDITIONS ALONG WITH STRONGER WINDS TOWARDS THE MIDDLE  
 OF NEXT WEEK.

FOR TODAY

WEATHER.....PARTLY CLOUDY. 15% CHANCE OF SHOWERS AND  
 THUNDERSTORMS AFTER 1500 LOCAL.  
 TEMPERATURE.....MAX 76-79  
 HUMIDITY.....MIN 19-23%  
 WIND...20 FOOT.....WEST 8-12 MPH WITH GUSTS UP TO 20 MPH.  
 GUSTY AND ERRATIC WINDS NEAR THUNDERSTORMS.  
 CWR.....5%.  
 LAL.....2.

FOR TONIGHT

WEATHER.....PARTLY CLOUDY THEN BECOMING MOSTLY CLEAR  
 TEMPERATURE.....MIN 51-53  
 HUMIDITY.....MAX 60-65%  
 WIND...20 FOOT.....NORTHWEST 4-7 MPH



CWR.....0%.  
LAL.....1.

OUTLOOK FOR TOMORROW

WEATHER.....MOSTLY SUNNY.  
TEMPERATURE.....MAX 77-80  
HUMIDITY.....MIN 14-17%  
WIND...20 FOOT....SOUTHWEST 8 TO 12 MPH GUSTS TO 20 MPH.  
CWR.....0%.  
LAL.....1.

FORECASTER...FUENTES

**Please provide feedback:**

[Printer Friendly Version of Forecast](#)

[Back to Spot List](#) [Copy Info to New Spot Request](#)




National Oceanic and Atmospheric Administration (NOAA)


[Privacy Policy](#)

National Weather Service  
Fire & Public Weather Services Branch  
Page Author: NWS Internet Services Team  
Page last updated at 5:57 am PST 3/5/07

## Division/Group Assignment List (ICS 204 WF)

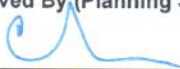
<b>1. Incident Name:</b>		<b>3.</b>					
R-1 DODGE		<b>Branch:</b>		<b>Division/Group:</b>  <b>DIVISION A</b>			
<b>2. Operational Period:</b> DAY							
Date/Time From: 08/08/2015 0600 SAT		Date/Time To: 08/08/2015 1800 SAT					
<b>4. Operations Personnel</b>							
<b>DIVISION/GROUP SUPERVISOR</b>		GROVE BRAWLEY		<b>AIR OPERATIONS</b>		CHRIS INGRAM	
<b>5. Resources Assigned this Period</b>							
Strike Team / Task Force / Resource Designator		LWD	Leader		Number Persons	Drop Off PT./Time	Pick Up PT./Time
FIRESTORM 4 TYPE 2 CREW			RAMIREZ		20		
FIRESTORM E 9907			PEARCE		3		
E 2413			PEREZ		6		
TYPE 3 ENGINE TBA							
<b>6. Control Operations/Work Assignments:</b>							
Hold and improve existing line. Grid 100 feet into black							
<b>7. Special Instructions:</b>							
Maintain unburned fuel islands							
<b>8. Division/Group Communication Summary</b>							
Function	Channel	RX Frequency N/W	RX Tone/NAC	TX Frequency N/W	TX Tone/NAC	Mode	
TACTICAL	1	168.0500	156.7	168.0500	156.7	A	
COMMAND	10	168.4750	0000	173.8125	156.7	A	
COMMAND	11	168.4750	0000	168.4750	156.7	A	
AIR TO GROUND	14	164.8375	0000	164.8375	0000	A	
<b>9. Prepared By (Resource Unit Leader)</b>			<b>Approved By (Planning Section Chief)</b>		<b>Date</b>	<b>Time</b>	
MAGENHEIMER					08/07/2015	1820	

## Division/Group Assignment List (ICS 204 WF)

<b>1. Incident Name:</b>			<b>3.</b>			
R-1 DODGE			<b>Branch:</b>		<b>Division/Group:</b>  <b>DIVISION M</b>	
<b>2. Operational Period:</b> <b>DAY</b>						
Date/Time From: 08/08/2015 0600                      SAT		Date/Time To: 08/08/2015 1800                      SAT				
<b>4. Operations Personnel</b>						
<b>DIVISION/GROUP SUPERVISOR</b>		MARTINEZ DIXON		<b>AIR OPERATIONS</b>		CHRIS INGRAM
<b>5. Resources Assigned this Period</b>						
Strike Team / Task Force / Resource Designator		LWD	Leader	Number Persons	Drop Off PT./Time	Pick Up PT./Time
TYPE 1HC TALLAC			SANDERS / GROVE	18		
HELITACK LAS VEGAS				8		
E 9910				3		
E SIERRA 9				3		
DOZER BLM 2818			HEINEMAN	2		
DOZER BLM 2819			DEASY	2		
DOZER DIAMOND RING				1		
DOZER BERRYESSA				1		
HEAVY EQUIPMANET BOSS DOLAN						
HEAVY EQUIPMENT BOSS LUNDSFORD						
SAFETY OFFICER HADE						
<b>6. Control Operations/Work Assignments:</b>						
Construct line with dozers and hold existing line						
<b>7. Special Instructions:</b>						
Maintain unburned fuel islands.						
<b>8. Division/Group Communication Summary</b>						
Function	Channel	RX Frequency N/W	RX Tone/NAC	TX Frequency N/W	TX Tone/NAC	Mode
TACTICAL	2	168.2000	156.7	168.2000	156.7	A
COMMAND	10	168.4750	0000	173.8125	156.7	A
COMMAND	11	168.4750	0000	168.4750	156.7	A
AIR TO GROUND	14	164.8375	0000	164.8375	0000	A
<b>9. Prepared By (Resource Unit Leader)</b>			<b>Approved By (Planning Section Chief)</b>		<b>Date</b>	<b>Time</b>
MAGENHEIMER					08/07/2015	1825




## Division/Group Assignment List (ICS 204 WF)

<b>1. Incident Name:</b>		<b>3.</b>				
R-1 DODGE		<b>Branch:</b>		<b>Division/Group:</b>  <b>DIVISION Q</b>		
<b>2. Operational Period:</b> <b>DAY</b>						
Date/Time From:                      08/08/2015 0600                      SAT		Date/Time To:                      08/08/2015 1800                      SAT				
<b>4. Operations Personnel</b>						
<b>DIVISION/GROUP SUPERVISOR</b>		DUNING, ERIC JAY GANNON, JAMES		<b>AIR OPERATIONS</b>		CHRIS INGRAM
<b>5. Resources Assigned this Period</b>						
Strike Team / Task Force / Resource Designator		LWD	Leader	Number Persons	Drop Off PT./Time	Pick Up PT./Time
TYPE 2 CREW ACOMA			VALLO	20		
TYPE 2 CREW FOLSOM				20		
E 5273			COOPER	3		
E 5274			MORGAN	3		
SAFETY OFFICER			FEMMEL	1		
<b>6. Control Operations/Work Assignments:</b>						
Construct line and hold existing line Utilize all resources						
<b>7. Special Instructions:</b>						
Fly Acoma Crew to drop-point H-12 (N40 54.73 / W 120 02.093)						
Maintain unburned fuel islands.						
<b>8. Division/Group Communication Summary</b>						
Function	Channel	RX Frequency N/W	RX Tone/NAC	TX Frequency N/W	TX Tone/NAC	Mode
TACTICAL	3	168.6000	156.7	168.6000	156.7	A
COMMAND	10	168.4750	0000	173.8125	156.7	A
COMMAND	11	168.4750	0000	168.4750	156.7	A
AIR TO GROUND	14	164.8375	0000	164.8375	0000	A
<b>9. Prepared By (Resource Unit Leader)</b>			<b>Approved By (Planning Section Chief)</b>		<b>Date</b>	<b>Time</b>
MAGENHEIMER					08/06/2015	2130



## Division/Group Assignment List (ICS 204 WF)

<b>1. Incident Name:</b>			<b>3.</b>			
R-1 DODGE			Branch:		Division/Group:  <b>DIVISION T</b>	
<b>2. Operational Period:</b> DAY						
Date/Time From: 08/08/2015 0600 SAT		Date/Time To: 08/08/2015 1800 SAT				
<b>4. Operations Personnel</b>						
<b>DIVISION/GROUP SUPERVISOR</b>		HAMRICK, GRANT D GREYSHIELD (T)		<b>AIR OPERATIONS</b>		CHRIS INGRAM
<b>5. Resources Assigned this Period</b>						
Strike Team / Task Force / Resource Designator		LWD	Leader	Number Persons	Drop Off PT./Time	Pick Up PT./Time
CREW TYPE 2 SACRAMENTO				20		
DOZER LNF 21			MULLER	2		
DOZER NOD 2			MURPHY	2		
HEAVY EQUIPMENT BOSS KOTTKE						
<b>6. Control Operations/Work Assignments:</b>						
Hold and improve existing line. Grid 100 feet into black						
<b>7. Special Instructions:</b>						
Maintain unburned fuel islands						
<b>8. Division/Group Communication Summary</b>						
Function	Channel	RX Frequency N/W	RX Tone/NAC	TX Frequency N/W	TX Tone/NAC	Mode
TACTICAL	5	166.7750	156.7	166.7750	156.7	A
COMMAND	10	168.4750	0000	173.8125	156.7	A
COMMAND	11	168.4750	0000	168.4750	156.7	A
AIR TO GROUND	14	164.8375	0000	164.8375	0000	A
<b>9. Prepared By (Resource Unit Leader)</b>			<b>Approved By (Planning Section Chief)</b>		<b>Date</b>	<b>Time</b>
MAGENHEIMER					08/07/2015	1830

## Division/Group Assignment List (ICS 204 WF)

<b>1. Incident Name:</b>			<b>3.</b>			
R-1 DODGE			Branch:		Division/Group:  <b>DIVISION Y</b>	
<b>2. Operational Period:</b> DAY						
Date/Time From: 08/08/2015 0600 SAT		Date/Time To: 08/08/2015 1800 SAT				
<b>4. Operations Personnel</b>						
DIVISION/GROUP SUPERVISOR		JASON DANEN KRACHE (T)		AIR OPERATIONS		CHRIS INGRAM
<b>5. Resources Assigned this Period</b>						
Strike Team / Task Force / Resource Designator		LWD	Leader	Number Persons	Drop Off PT./Time	Pick Up PT./Time
CREW TYPE 2 MHR1			SMITH	19		
CREW TYPE 2 WNA 1			SHARP	20		
NEVADA TASK FORCE 3			VANDERSLICE	21		
DOZER HOLT				1		
HEAVY EQUIPMENT BOSS SANTO						
SAFETY OFFICER RAMEKERS						
<b>6. Control Operations/Work Assignments:</b>						
Continue line construction and hold existing line and tie in retardant line where possible						
<b>7. Special Instructions:</b>						
Fly crews to drop-point 42 (not approved yet)						
<b>8. Division/Group Communication Summary</b>						
Function	Channel	RX Frequency N/W	RX Tone/NAC	TX Frequency N/W	TX Tone/NAC	Mode
TACTICAL	4	166.7250	156.7	166.7250	156.7	A
COMMAND	10	168.4750	0000	173.8125	156.7	A
COMMAND	11	168.4750	0000	168.4750	156.7	A
AIR TO GROUND	14	164.8375	0000	164.8375	0000	A
<b>9. Prepared By (Resource Unit Leader)</b>			<b>Approved By (Planning Section Chief)</b>		<b>Date</b>	<b>Time</b>
MAGENHEIMER			MAGENHEIMER		08/07/2015	1835



## Division/Group Assignment List (ICS 204 WF)

<b>1. Incident Name:</b>			<b>3.</b>			
R-1 DODGE			<b>Branch:</b>		<b>Division/Group:</b>	
<b>2. Operational Period:</b>			<b>DROP POINT 1 STAGING</b>			
<b>DAY</b>						
Date/Time From: 08/08/2015 0600      SAT		Date/Time To: 08/08/2015 1800      SAT				
<b>4. Operations Personnel</b>						
<b>DIVISION/GROUP SUPERVISOR</b>		LARSON		<b>AIR OPERATIONS</b>		INGRAM
<b>5. Resources Assigned this Period</b>						
Strike Team / Task Force / Resource Designator		LWD	Leader	Number Persons	Drop Off PT./Time	Pick Up PT./Time
WATER TENDER E 3			MCGILL	1		
WATER TENDER E 4				1		
WATER TENDER E 9			PHILLIPS	1		
WATER TENDER E 10			BRUNER	1		
WATER TENDER E 11				1		
WATER TENDER E 50						
<b>6. Control Operations/Work Assignments:</b>						
<b>7. Special Instructions:</b>						
Minimize use of water out of Dodge Reservoir						
<b>8. Division/Group Communication Summary</b>						
Function	Channel	RX Frequency N/W	RX Tone/NAC	TX Frequency N/W	TX Tone/NAC	Mode
COMMAND	10	168.4750	0000	173.8125	156.7	A
<b>9. Prepared By (Resource Unit Leader)</b>			<b>Approved By (Planning Section Chief)</b>		<b>Date</b>	<b>Time</b>
MAGENHEIMER			MAGENHEIMER		08/07/2015	1825


# INCIDENT RADIO COMMUNICATIONS PLAN (ICS 205)

<b>1. Incident Name:</b> R-1 DODGE	<b>2. Date/Time Prepared:</b> Date: 08/07/2015 Time: 2100	<b>3. Operational Period:</b> DAY	<b>Date/Time To:</b> 08/08/2015 1800
	<b>Date/Time From:</b> 08/08/2015 0600	<b>TX Tone/NAC</b> SAT	<b>Remarks</b> SAT

4. Basic Radio Channel Use:															
Zone Group	Ch #	Function	Channel Name/Trunked Radio System Talkgroup	Assignment	RX Freq	RX Tone/NAC	TX Freq	TX Tone/NAC	Mode (A, D, or M)	Remarks					
	1	TACTICAL	NIFC TAC 1	DIV A	168.0500	156.7	168.0500	156.7	A						
	2	TACTICAL	NIFC TAC 2	DIV M	168.2000	156.7	168.2000	156.7	A						
	3	TACTICAL	NIFC TAC 3	DIV Q	168.6000	156.7	168.6000	156.7	A						
	4	TACTICAL	NIFC TAC 4	DIV Y	166.7250	156.7	166.7250	156.7	A						
	5	TACTICAL	NIFC TAC 5	DIV T	166.7750	156.7	166.7750	156.7	A						
	6	TACTICAL	NIFC TAC 6	UNASSIGNED	168.2500	156.7	168.2500	156.7	A						
	7	TACTICAL	NIFC TAC 7	UNASSIGNED	166.6750	156.7	166.6750	156.7	A						
	8	TACTICAL	NIFC TAC 8	MEDICAL	154.2650	00000	154.2650	0000	A						
	9	TACTICAL	NIFC TAC 9	UNASSIGNED	169.2000	156.7	169.2000	156.7	A						
	10	COMMAND	NIFC COMMAND 6	COMMAND ALL	168.4750	0000	173.8125	156.7	A						
	11	COMMAND	NIFC CMD DIR	ALL DIVISIONS	168.4750	0000	168.4750	156.7	A						
	12	COMMAND	BLM RPT	COMMAND BACKUP	172.8125	0000	166.3125	167.9	A						
	13	COMMAND	NIFC COMMAND 8	ALL DIVISIONS	169.5375	0000	164.7125	156.7	A						
	14	AIR TO GROUND	AIR GROUND	ALL DIVISIONS	164.8375	0000	164.8375	0000	A						
	15	COMMAND	NIFC COMMAND 10	COMMAND ALL	170.4125	0000	165.9625	156.7	A						
	16	AIR GUARD	AIR GUARD	ALL DIVISIONS	168.6250	0000	168.6250	110.9	A						

**5. Special Instructions:**

---

**6. Prepared By** (Communications Unit Leader) Name: WILLIAMS/MAGENHEIMER  
 Signature:   
 Date/Time: 08/07/2015 2100

IAP Page



# SAFETY MESSAGE

Dodge Fire

08/08/2015

Operational Period 0600-1800

REMEMBER LOOK UP, LOOK DOWN, LOOK AROUND.....WELL OUR MESSAGE TODAY IS

## LOOK DOWN!

Rock holes filled by dust or ash

Rocky terrain

Moving rock to rock jumping in to ash hole

Mud

Don't get complacent!

After hours medical needs:

Make contact with the Communications trailer, they will contact Safety and our medical staff. If you have a critical incident you can contact communications on Tac 8 at any time.

## Medical Plan (ICS 206 WF)

1. Incident/Project Name:		2. Operational Period:		DAY			
R-1 DODGE		Date/Time From: 08/08/2015 0600 SAT		Date/Time To: 08/08/2015 1800 SAT			
3. Ambulance Services							
Name	Complete Address	Phone & EMS Frequency	Advanced Life Support (ALS)				
			Yes	No			
SEMSA	SUSANVILLE, CA 96130	(530) 257-5575	X				
4. Air Ambulance Services							
Name	Phone	Type of Aircraft	Capability				
MOUNTAIN LIFEFLIGHT	(530) 257-5575	A STAR	1 PATIENT				
5. Hospitals							
Name Complete Address	GPS Datum - WGS 84 Coordinate Standard Degrees Decimal Minutes DD° MM.MMM' N - Lat DD° MM.MMM' W - Long	Travel Time		Phone	Helipad		Level of Care Facility
		Air	Ground		Yes	No	
BANNER LASSEN MEDICAL 1800 SPRING RIDGE DRIVE SUSANVILLE, CA 96130	Lat: 40 26.182N	25 MINUTES	120 MINUTES	(530) 252-2000	X		LEVEL 3 TRAUMA
	Long: 120 39.237W						
	VHF:						
RENOWN MEDICAL CENTER 1155 MILL STREET RENO, NV 89502	Lat: 39 31.280N	34 MINUTES	3.5 HOURS	(775) 982-4100	X		TRAUMA/STEMI/STROKE
	Long: 119 47.440W						
	VHF: TX:468.100 RX:463.100 PL TONE: 24						
UC DAVIS BURN CENTER 2315 STOCKTON BLVD SACRAMENTO, CA 95817	Lat: 38 33.160N	75 INUTES	5.5 HOURS	(916) 734-3636	X		BURN CENTER
	Long: 119 27.270W						
	VHF: TX: 155.30 RX: 155.30						
6. Area Location Capability							
Branch Division/Group							
8. Prepared By (Medical Unit Leader)		9. Date/Time		10. Reviewed By (Safety Officer)		11. Date/Time	
MICHAEL PORTER MEDL(T)		08/06/2015 2100		SCOTT FRASER SOFR		08/06/2015 2100	



## Medical Plan (ICS 206 WF)

<b>1. Incident/Project Name:</b>	<b>2. Operational Period:</b>	<b>DAY</b>
R-1 DODGE	Date/Time From: 08/08/2015 0600	SAT Date/Time To: 08/08/2015 1800 SAT

### 6. Area Location Capability

Branch Division/Group		
A	EMS Responders & Capability:	CREW EMTS/EMT-BASIC
	Equipment Available on Scene:	EMT-BASIC
	Medical Emergency Channel:	TAC 8
	ETA for Ambulance to Scene:	
	Air:	30 MINUTES
	Ground:	120 MINUTES
	Approved Helispot:	
	Lat:	PER DIV SUP
	Long:	PER DIV SUP
M	EMS Responders & Capability:	CREW EMTS/EMT--BASIC
	Equipment Available on Scene:	EMT-BASIC
	Medical Emergency Channel:	TAC 8
	ETA for Ambulance to Scene:	
	Air:	30 MINUTES
	Ground:	120 MINUTES
	Approved Helispot:	
	Lat:	PER DIV SUP
	Long:	PER DIV SUP
Q	EMS Responders & Capability:	CREW EMTS/EMT-BASIC
	Equipment Available on Scene:	EMT-BASIC
	Medical Emergency Channel:	TAC 8
	ETA for Ambulance to Scene:	
	Air:	30 MINUTES
	Ground:	120 MINUTES
	Approved Helispot:	
	Lat:	PER DIV SUP
	Long:	PER DIV SUP

--	--	--

8. Prepared By (Medical Unit Leader)	9. Date/Time	10. Reviewed By (Safety Officer)	11. Date/Time
MICHAEL PORTER MEDL(T)	08/06/2015 2100	SCOTT FRASER SOFR	08/06/2015 2100

## Medical Plan (ICS 206 WF)

<b>1. Incident/Project Name:</b>	<b>2. Operational Period:</b> <b>DAY</b>		
R-1 DODGE	Date/Time From: 08/08/2015 0600	SAT	Date/Time To: 08/08/2015 1800

### 6. Area Location Capability

Branch Division/Group		
T	EMS Responders & Capability:	CREW EMTS/EMT-BASIC
	Equipment Available on Scene:	EMT-BASIC
	Medical Emergency Channel:	TAC 8
	ETA for Ambulance to Scene:	
	Air:	30 MINUTES
	Ground:	120 MINUTES
	Approved Helispot:	
	Lat:	PER DIV SUP
	Long:	PER DIV SUP
Y	EMS Responders & Capability:	CREW EMTS /EMT-BASIC
	Equipment Available on Scene:	EMT-BASIC
	Medical Emergency Channel:	TAC 8
	ETA for Ambulance to Scene:	
	Air:	30 MINUTES
	Ground:	120M INUTES
	Approved Helispot:	
	Lat:	PER DIV SUP
	Long:	PER DIV SUP
DODGE HELIBASE	EMS Responders & Capability:	AMBULANCE 174/ALS CAPABILITY
	Equipment Available on Scene:	ALS
	Medical Emergency Channel:	TAC 8
	ETA for Ambulance to Scene:	
	Air:	20 MINUTES
	Ground:	60 MINUTES
	Approved Helispot:	
	Lat:	
	Long:	

### 7. Remote Camp Location(s)

Name & Location			

<b>8. Prepared By (Medical Unit Leader)</b>	<b>9. Date/Time</b>	<b>10. Reviewed By (Safety Officer)</b>	<b>11. Date/Time</b>
MICHAEL PORTER MEDL(T)	08/06/2015 2100	SCOTT FRASER SOFR	08/06/2015 2100



## Medical Plan (ICS 206 WF)

<b>1. Incident/Project Name:</b>		<b>2. Operational Period:</b> DAY	
R-1 DODGE		Date/Time From: 08/08/2015 0600      SAT	Date/Time To: 08/08/2015 1800      SAT
<b>7. Remote Camp Location(s)</b>			
<b>Name &amp; Location</b>			
	Point Of Contact:		
	EMS Responders & Capability		
	Equipment Available on Scene:		
	Medical Emergency Channel:		
	ETA for Ambulance To Scene:		
	Air:		
	Ground:		
	Approved Helispot:		
	Lat:		
	Long:		
<b>8. Prepared By (Medical Unit Leader)</b>	<b>9. Date/Time</b>	<b>10. Reviewed By (Safety Officer)</b>	<b>11. Date/Time</b>
MICHAEL PORTER MEDL(T)	08/06/2015 2100	SCOTT FRASER SOFR	08/06/2015 2100

# MEDICAL PLAN (ICS 206)

## 12. Medical Incident Procedures

**FOR ALL MEDICAL EMERGENCIES: IDENTIFY ON SCENE INCIDENT COMMANDER BY NAME AND POSITION AND ANNOUNCE "MEDICAL EMERGENCY" TO INITIATE RESPONSE FROM IMT COMMUNICATIONS/DISPATCH.**

### Medical Incident Report

Use items one through nine to communicate situation to communications/dispatch.

- CONTACT COMMUNICATIONS/DISPATCH**  
Ex: "Communications: Div. Alpha. Stand-by for Priority Medical Incident Report." (If life threatening, request designated frequency be cleared for emergency traffic.)
- INCIDENT STATUS: Provide incident summary and command structure.**

<b>Nature of Injury/Illness</b>		<i>Describe the injury (Ex: Broken leg with bleeding)</i>
Incident Name		<i>Geographic Name + "Medical" (Ex: Trout Meadow Medical)</i>
Incident Commander		<i>Name of IC</i>
Patient Care		<i>Name of Care Provider (Ex: EMT Smith)</i>

- INITIAL PATIENT ASSESSMENT:**  
Complete this section for each patient. This is only a brief, initial assessment. Provide additional patient info after completing this 9 Line Report.

Number of Patients:	Male / Female	Age:	Weight:
Conscious?	<input type="checkbox"/> YES	<input type="checkbox"/> NO = MEDEVAC!	
Breathing?	<input type="checkbox"/> YES	<input type="checkbox"/> NO = MEDEVAC!	
Mechanism of Injury: <i>What caused the injury?</i>			
Lat/Long (Datum WG884) Ex: N 40° 42.45' x W 123° 03.24'			

- SEVERITY OF EMERGENCY, TRANSPORT PRIORITY**

SEVERITY	TRANSPORT PRIORITY
<input type="checkbox"/> <b>URGENT-RED Life threatening injury or illness.</b> Ex: Unconscious, difficulty breathing, bleeding severely, 2 - 3 degree burns more than 4 palm sizes, heat stroke, disoriented.	Ambulance or MEDEVAC helicopter. Evacuation need is <b>IMMEDIATE</b> .
<input type="checkbox"/> <b>PRIORITY-YELLOW Serious Injury or illness.</b> Ex: Significant trauma, not able to walk, 2 - 3 degree burns not more than 1-2 palm sizes.	Ambulance or consider air transport if at remote location. Evacuation may be <b>DELAYED</b> .
<input type="checkbox"/> <b>ROUTINE-GREEN</b> Not a life threatening injury or illness. Ex: Sprains, strains, minor heat-related illness.	Non-Emergency. Evacuation considered <b>Routine of Convenience</b> .

- TRANSPORT PLAN:**

<b>Air Transport: (Agency Aircraft Preferred)</b>			
<input type="checkbox"/> Helispot	<input type="checkbox"/> Short-haul/Hoist	<input type="checkbox"/> Life Flight	<input type="checkbox"/> Other
<b>Ground Transport:</b>			
<input type="checkbox"/> Self-Extract	<input type="checkbox"/> Carry-Out	<input type="checkbox"/> Ambulance	<input type="checkbox"/> Other

- ADDITIONAL RESOURCE/EQUIPMENT NEEDS:**

<input type="checkbox"/> Paramedic/EMT(s)	<input type="checkbox"/> Crew(s)	<input type="checkbox"/> SKED/Backboard/C-Collar
<input type="checkbox"/> Burn Sheet(s)	<input type="checkbox"/> Oxygen	<input type="checkbox"/> Trauma Bag
<input type="checkbox"/> Medication(s)	<input type="checkbox"/> IV/Fluid(s)	<input type="checkbox"/> Cardiac Monitor/AED
<input type="checkbox"/> Other (i.e. splints, rope rescue, wheeled litter)		

- COMMUNICATIONS:**

Function	Channel Name/Number	Receive (Rx)	Tone/NAC *	Transmit (Tx)	Tone/NAC *
Ex: Command	Forest Rpt, Ch. 2	168.3250	110.9	171.4325	110.9
COMMAND					
AIR-TO-GRND					
TACTICAL					

\*(NAC for digital radio system)

- EVACUATION LOCATION:**

Lat/Long (Datum WG884) EX: N 40 42.45' x W 123 03.24'	
Patient's ETA to Evacuation Location:	
Helispot/Extraction Size and Hazards:	

- CONTINGENCY:**

*Considerations: If primary options fail, what actions can be implemented in conjunction with primary evacuation method? Be thinking ahead...*

**REMEMBER:**

- Confirm ETA's of resources ordered
- Act according to your level of training
- Be Alert. Keep Calm. Think Clearly. Act Decisively.

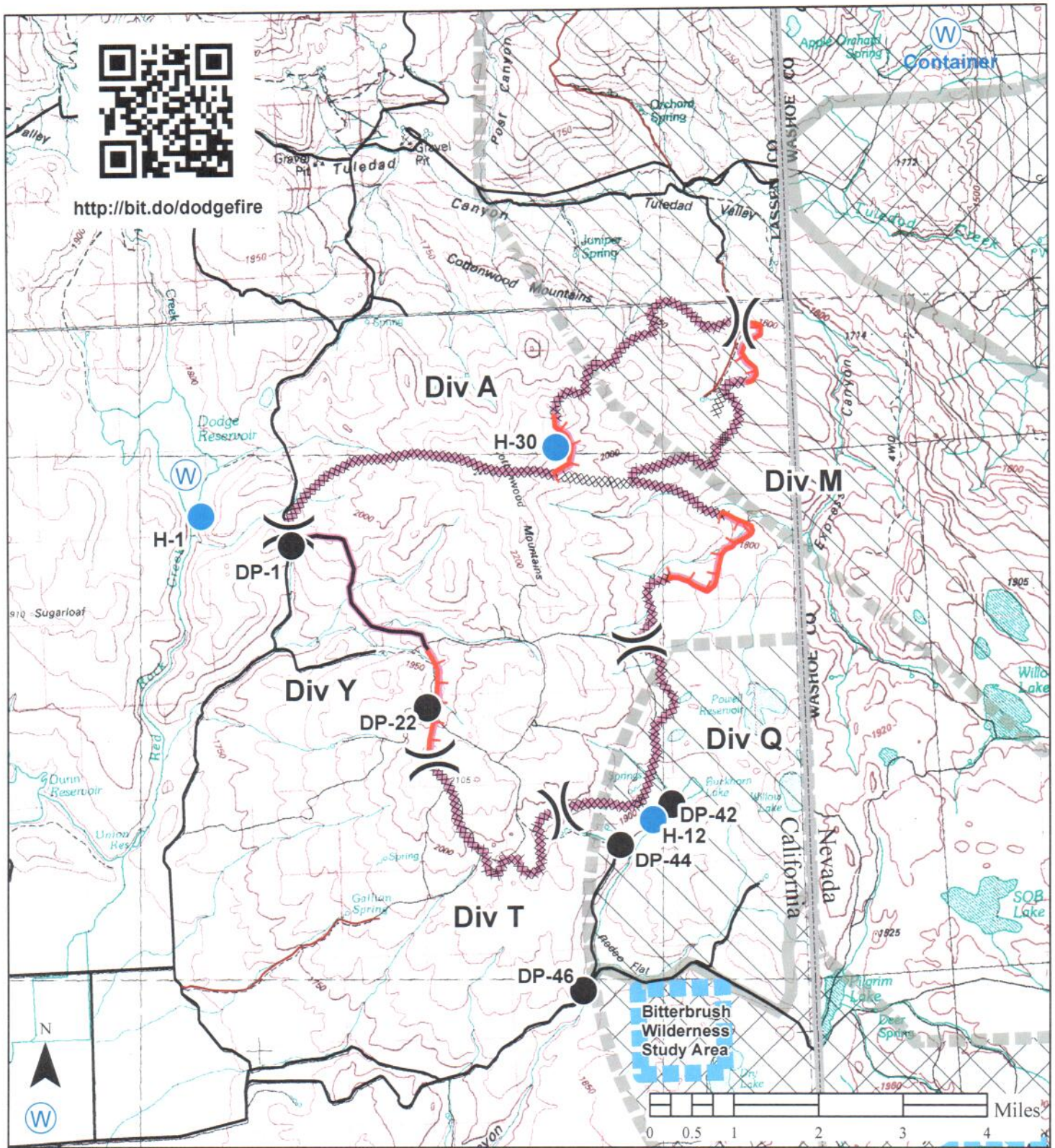




## AIR OPERATIONS SUMMARY (ICS 220)

1. Incident Name:		2. Operational Period: DAY		3. Sunrise:	Sunset:	
R-1 DODGE		Date/Time From: 08/08/2015 0600	SAT	0606	2009	
Date/Time To: 08/08/2015 1800		SAT				
<b>10. Helicopters</b> (use additional sheets as necessary):						
FAA N#	Category/Kind/Type	Make/Model	Base	Available	Start	Remarks
1BH	TYPE 3	AS350 B3C	SALT LAKE	0800	0900	Based at the Ravendale Helibase. Available for regional IA and Med Evac.
3AE	TYPE 3	AS350 B3C	LAS VEGAS		0900	Based during operational period @ HP-1 Lat: degrees 40 58.635 N, degrees 120 07.895 W.
<b>12. Task/Mission/Assignment</b> (category/kind/type and function includes: air tactical, reconnaissance, personnel transport, search and rescue, etc.):						
Category/Kind/Type and Function	Name of Personnel or Cargo (if applicable) or Instructions for Tactical Aircraft			Mission Start	Fly From	Fly To
<b>11. Prepared by: Name: CHRIS INGRAM</b>						
ICS 220, Page 2 of 2		Position/Title: AOBD		Signature:		
		Date/Time: 08/07/2015 2030				





<http://bit.do/dodgefire>

### Dodge Fire IAP Map

CA-NOD-003806

8/8/2015

Approx. 11,500 ac

Nate Rasner  
Sierra Front IMT



### Legend

- Uncontrolled Fire Edge
- Completed Dozer Line
- Completed Line
- Drop Point

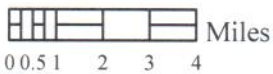
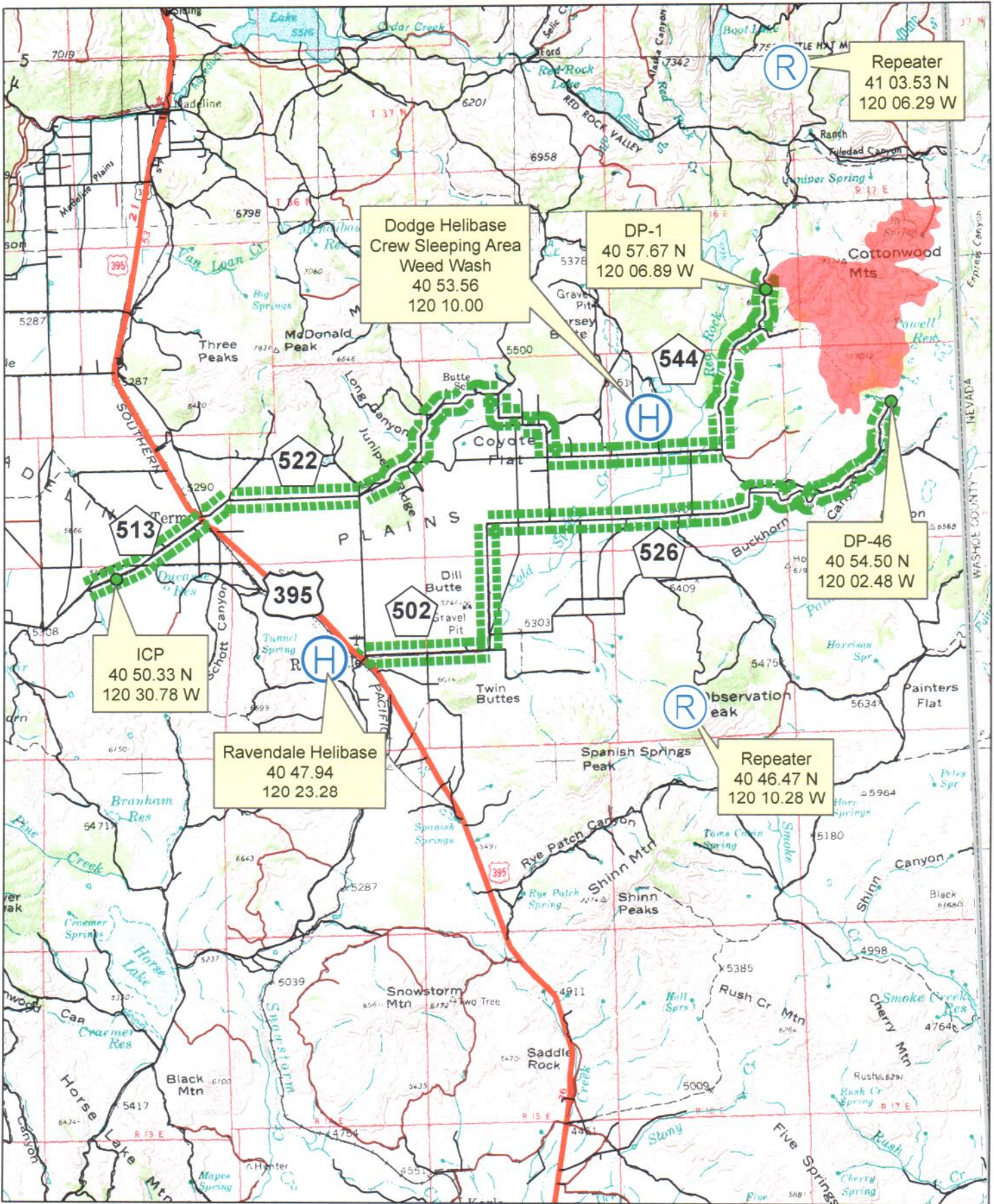
Helispot

Water Source

### FIAT Suppression Priorities

- High
- Moderate

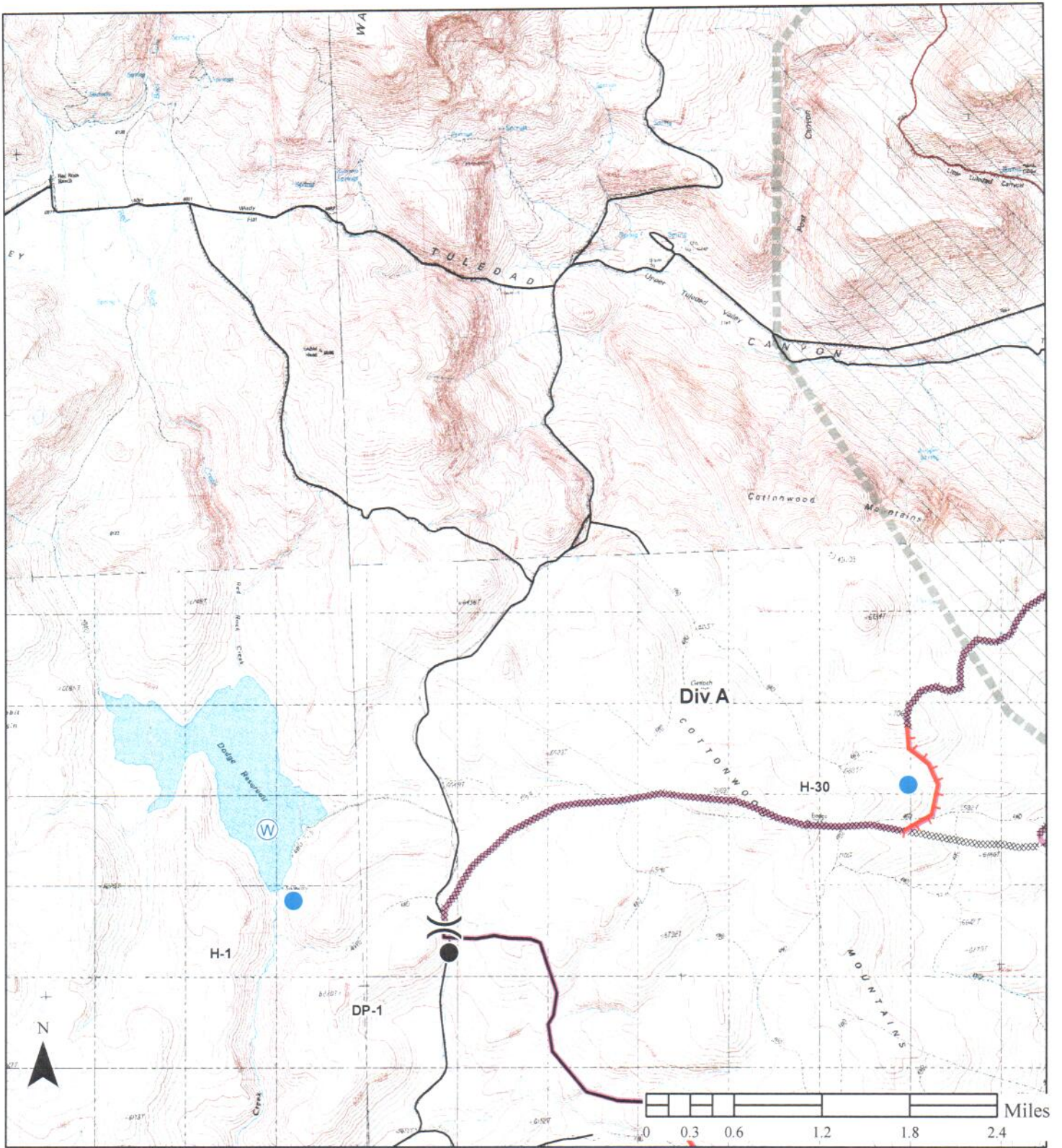




**Dodge Fire Transport Map**  
CA-NOD-003806 8/8/2015







**Dodge Fire  
IAP Map**  
CA-NOD-003806  
8/8/2015  
Approx. 11,500 ac



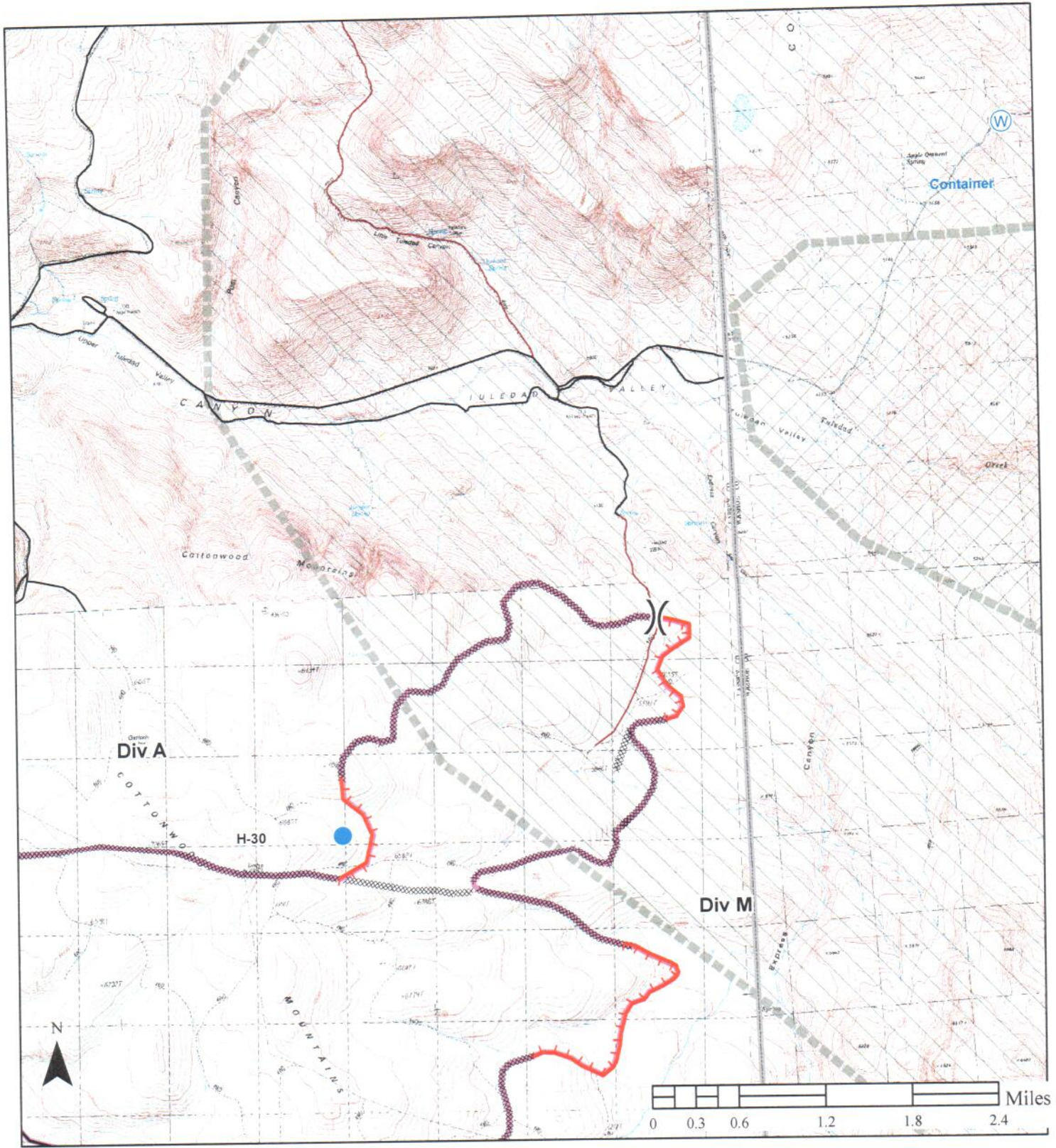
Nate Rasner  
Sierra Front IMT




**Legend**

- Uncontrolled Fire Edge
- Completed Dozer Line
- Completed Line
- Drop Point
- Helispot
- Water Source
- FIAT Suppression Priorities**
- High
- Moderate













**Dodge Fire**  
**IAP Map**  
 CA-NOD-003806  
 8/8/2015  
 Approx. 11,500 ac

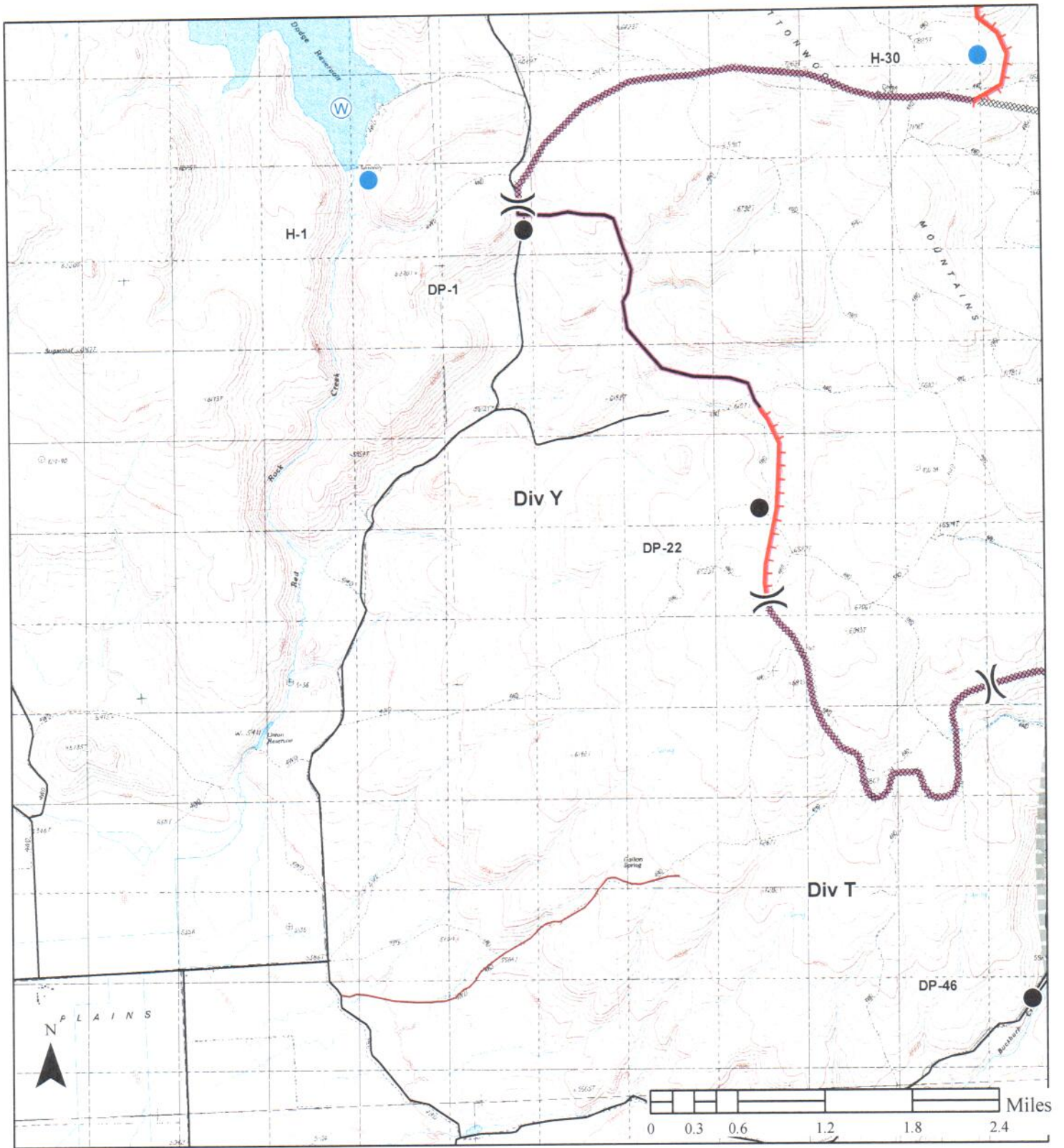
  
 Nate Rasner  
 Sierra Front IMT



**Legend**

-  Uncontrolled Fire Edge
-  Completed Dozer Line
-  Completed Line
-  Drop Point
-  Helispot
-  Water Source
- FIAT Suppression Priorities**
-  High
-  Moderate





**Dodge Fire**  
**IAP Map**  
 CA-NOD-003806  
 8/8/2015  
 Approx. 11,500 ac

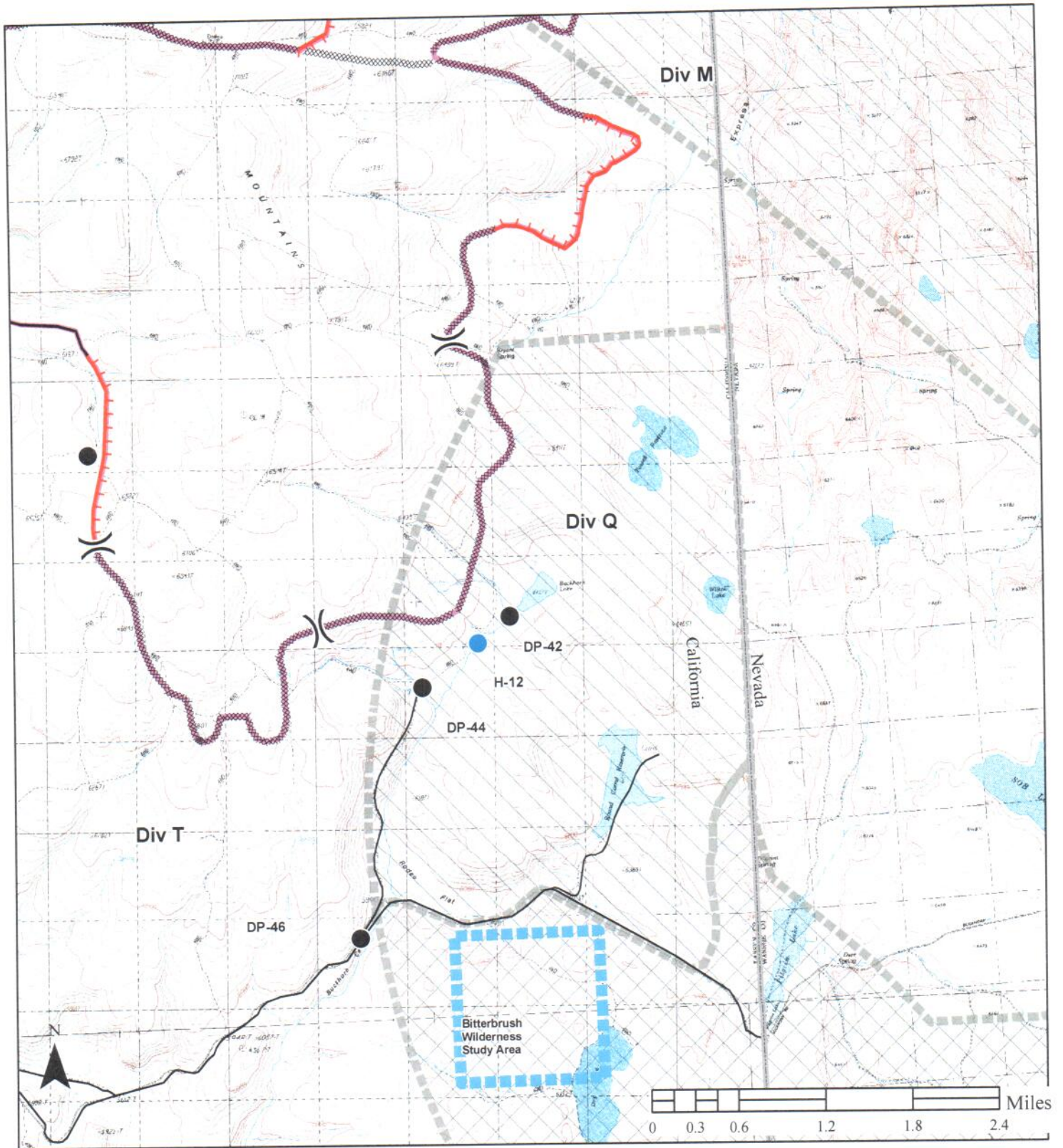
Nate Rasner  
 Sierra Front IMT



**Legend**

- Uncontrolled Fire Edge
- Completed Dozer Line
- Completed Line
- Drop Point
- Helispot
- Water Source
- FIAT Suppression Priorities**
- High
- Moderate





**Dodge Fire**  
**IAP Map**  
 CA-NOD-003806  
 8/8/2015  
 Approx. 11,500 ac

Nate Rasner  
 Sierra Front IMT



**Legend**

- Uncontrolled Fire Edge
- Completed Dozer Line
- Completed Line
- Drop Point
- Helispot
- Water Source
- FIAT Suppression Priorities**
- High
- Moderate