



# Dodge Fire

## Incident Action Plan

August 9, 2015

Day Operations


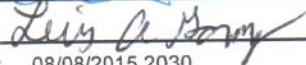
R-1 Dodge

CA-NOD-003806


J0SD

---

## INCIDENT OBJECTIVES (ICS 202)

<b>1. Incident Name:</b>	<b>2. Operational Period: DAY</b>	
R-1 DODGE	Date/Time From: 08/09/2015 0600      SUN	Date/Time To: 08/09/2015 1800      SUN
<b>3. Objective(s):</b>		
<p><b>Firefighter and public safety will be the number one concern</b> in all fire management activities</p> <p>-Assure that safety of firefighter, aviation, support personnel, and the public is the highest priority at all times for the duration of the incident</p> <p>Protect all structures, private lands and values at risk without compromising firefighter and public safety.</p> <p>Utilize resources cost-effectively</p> <p>Protect all <b>sage grouse habitat ,cultural resources, wilderness study areas and recreation areas.</b></p>		
<b>4. Operational Period Command Emphasis:</b>		
<p>Keep the Fire within the following boundaries</p> <ul style="list-style-type: none"> <li>- East of Tuledad Road</li> <li>- South of Tuledad Canyon</li> <li>- West of California/Nevada State Line</li> <li>- North of Buckhorn Road</li> </ul>		
<b>General Situational Awareness:</b>		
<p>Due to drought, wind, and fuel conditions the fire behavior has been moderate to high. Fire growth is mainly high due to current and predicted weather conditions for the next several days</p> <p>Stay alert to changing weather conditions as a low pressure system moves into the area</p>		
<b>5. Site Safety Plan Required?</b> Yes <input type="checkbox"/> No <input checked="" type="checkbox"/>		
Approved Site Safety Plan(s) Located at:		
<b>6. Incident Action Plan</b> (the items checked below are included in this Incident Action Plan):		
<input checked="" type="checkbox"/> ICS 202 <input checked="" type="checkbox"/> ICS 203 <input checked="" type="checkbox"/> ICS 204 <input checked="" type="checkbox"/> ICS 205 <input type="checkbox"/> ICS 205A <input type="checkbox"/> ICS 206	<input type="checkbox"/> ICS 207 <input type="checkbox"/> ICS 208 <input checked="" type="checkbox"/> ICS 220 <input checked="" type="checkbox"/> Map/Chart <input checked="" type="checkbox"/> Weather Forecast/Tides/Currents	Other Attachments: <input type="checkbox"/> _____ <input type="checkbox"/> _____ <input type="checkbox"/> _____ <input type="checkbox"/> _____
<b>7. Prepared by:</b> MAGENHEIMER	<b>Position/Title:</b> PSC3	<b>Signature:</b> 
<b>8. Approved by Incident Commander:</b>	<b>Name:</b> <i>Luis A Gomez</i>	<b>Signature:</b> 
<b>ICS 202</b>	<b>IAP Page</b>	<b>Date/Time:</b> 08/08/2015 2030

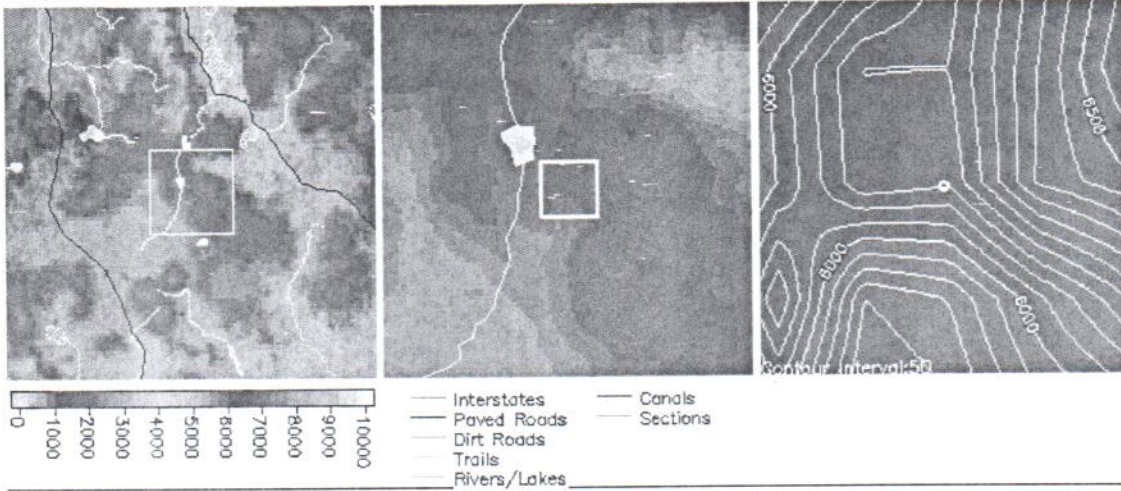
## ORGANIZATION ASSIGNMENT LIST (ICS 203)

<b>1. Incident Name:</b>		<b>2. Operational Period:</b> DAY	
R-1 DODGE		Date/Time From: 08/09/2015 0600	Date/Time To: 08/09/2015 1800
		SUN	SUN
<b>3. Incident Commander(s) and Command Staff:</b>		LOGISTICS	
IC	NATE RASNER MARK WINKLEMAN (T)	<b>7. Operations Section:</b>	
IC	LUIS GOMEZ (T)	DAY OPS SECTION CHIEF	MIKE HEIKKA
SAFETY OFFICER	SCOTT FRASER	PLANNING OPS	RYAN SOMMERS
INFORMATION OFFICER	BETH KENNA MARK REGAN	OPS SECTION CHIEF	
LIAISON OFFICER		DEPUTY OPS SECTION CHIEF	
<b>4. Agency/Organization Representative(s):</b>		STAGING AREA	
Agency/Organization	Name	<b>7b. Air Operations Branch:</b>	
DISTRICT MANAGER	NANCY HAUG	AIR OPS BRANCH DIRECTOR	CHRIS INGRAM
BLM AREA REP	EMILY RYAN	AIR ATTACK SUPERVISOR	
BLM AREA REP	DENNIS SYLVIA	AIR SUPPORT SUPERVISOR	
DFMO NORCAL DISTRICT	WALTER HERZOG	HELICOPTER COORDINATOR	
<b>5. Planning Section:</b>		AIR TANKER COORDINATOR	
CHIEF	CHRIS MAGENHEIMER	<b>8. Finance/Administration Section:</b>	
DEPUTY		CHIEF	BONNIE KENNEDY
RESOURCES UNIT	TERRE PEARSON RAMIREZ	EQUIPMENT COSTS	DONNA COONEY
SITUATION UNIT		TIME UNIT	ZANDRA ZAVALZA
DOCUMENTATION UNIT			
DEMOBILIZATION UNIT			
FIRE BEHAVIOR ANALYST			
HUMAN RESOURCE SPECIALIST			
TRAINING SPECIALIST			
GIS SPECIALIST	FOREST SCHAFER		
COMPUTER SPECIALIST			
INCIDENT METEOROLOGIST			
<b>6. Logistics Section:</b>			
CHIEF	JUSTIN LANGFORD EMILY LUTZ		
CHIEF	BOBBY WILLIS (T)		
SUPPLY UNIT			
FACILITIES UNIT			
GROUND SUPPORT UNIT			
COMMUNICATIONS UNIT	RANDY WILLIAMS MARK DOWNING (T)		
MEDICAL UNIT	ANTHONY GASPORRA MIKE PORTER (T)		
SECURITY UNIT			
FOOD UNIT	DILLE, LOYD C		
<b>9. Prepared By:</b>	Name: MAGENHEIMER	Position/Title: PSC 3	Signature: 
ICS 203	IAP Page	Date/Time: 08/07/2015 1815	

# Dodge (WILDFIRE) (Requested: 2338 PDT 8/8/15)

Forecast complete at 2350 PDT 8/8/15

Requested by: Sierra Front IMT Phone:(702) 979-1765



**Location:** Legal: Lat/Lon:40 57 29/120 6 32 Quad:  
 Calculated:(40°57'29"N 120°6'32"W) (BUCKHORN LAKE CA)  
 Elevation:6100-7300 Drainage:unknown Aspect:South Size:unknown  
 Fuel Type:Sage Juniper (Sheltering Unknown)

### Observations:

Place Elev Time Wind Temp Wetbulb RH Dewpt Remarks

Requested Parameters	Remarks
----------------------	---------

... Clouds / Weather	For tomorrow
... Temperature	Can we have as soon as possible
... Relative Humidity	Thanks
... 20 Foot Wind	Chris
... Smoke Dispersion	

### FORECAST:

IF CONDITIONS BECOME UNREPRESENTATIVE,  
CONTACT THE NATIONAL WEATHER SERVICE.

DISCUSSION...DRIER AIR WILL FILTER INTO THE BURN AREA OVER THE NEXT FEW DAYS, BUT THERE WILL ENOUGH MOISTURE SUNDAY FOR A FEW CUMULUS BUILD UPS IN THE AFTERNOON AND A VERY SMALL POSSIBILITY FOR A THUNDERSTORM LATE IN THE DAY. TEMPERATURES CLIMB TO NEAR NORMAL BY MONDAY. WINDS INCREASE BY THE MIDDLE OF THE WEEK WITH GUSTS TO 35 MPH POSSIBLE BY THURSDAY.

#### FOR SUNDAY

WEATHER.....MOSTLY SUNNY IN THE MORNING...THEN PARTLY CLOUDY WITH 10% CHANCE OF THUNDERSTORM AFTER 1500 LOCAL.

TEMPERATURE.....MAX 78-82.

HUMIDITY.....MIN 12-16%.

WIND...20 FOOT.....NORTH-NORTHWEST 6-9 MPH BECOMING SOUTH-SOUTHWEST 10-14 MPH WITH GUSTS UP TO 20 MPH AFTER 1400 LOCAL. GUSTY AND ERRATIC WINDS NEAR THUNDERSTORMS.

CWR.....<5%.

LAL.....1 IN THE MORNING...2 AFTER 1500 LOCAL.

#### FOR SUNDAY NIGHT

WEATHER.....PARTLY CLOUDY. A 10% CHANCE OF A THUNDERSTORM THROUGH 2000 LOCAL.

TEMPERATURE.....MIN 54-58.  
 HUMIDITY.....MAX 45-50%.  
 WIND...20 FOOT.....WEST-NORTHWEST 8-12 MPH. GUSTY AND ERRATIC  
 WINDS NEAR THUNDERSTORMS.  
 CWR.....<5%.  
 LAL.....2 THROUGH 2000 LOCAL...1 THROUGH THE NIGHT.

OUTLOOK FOR MONDAY

WEATHER.....PARTLY CLOUDY.  
 TEMPERATURE.....MAX 80-83.  
 HUMIDITY.....MIN 14-17%.  
 WIND...20 FOOT.....NORTH-NORTHWEST 6-9 MPH BECOMING SOUTH-  
 SOUTHWEST 8-12 MPH WITH GUSTS UP TO 22 MPH  
 AFTER 1400 LOCAL.  
 CWR.....0%.  
 LAL.....1.

FORECASTER...MLF

**Please provide feedback:**

Send Feedback

CANCEL

[Printer Friendly Version of Forecast](#)

[Back to Spot List](#) [Copy Info to New Spot Request](#)

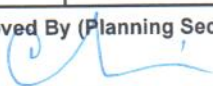


National Oceanic and Atmospheric Administration (NOAA)


[Privacy Policy](#)

National Weather Service  
 Fire & Public Weather Services Branch  
 Page Author: NWS Internet Services Team  
 Page last updated at 5:57 am PST 3/5/07


## Division/Group Assignment List (ICS 204 WF)

<b>1. Incident Name:</b>		<b>3.</b>				
R-1 DODGE		Branch:		Division/Group:  <b>DIVISION A</b>		
<b>2. Operational Period:</b> DAY						
Date/Time From: 08/09/2015 0600	SUN	Date/Time To: 08/09/2015 1800	SUN			
<b>4. Operations Personnel</b>						
DIVISION/GROUP SUPERVISOR		BRAWLEY		AIR OPERATIONS		CHRIS INGRAM
<b>5. Resources Assigned this Period</b>						
Strike Team / Task Force / Resource Designator		LWD	Leader	Number Persons	Drop Off PT./Time	Pick Up PT./Time
CREW TYPE 2 HVP 60			FOSTER	20		
FIRESTORM E 9907			PEARCE	3		
E 2413			PEREZ	6		
TYPE 3 ENGINE TBA						
SAFETY OFFICER HADE						
<b>6. Control Operations/Work Assignments:</b>						
Hold and improve existing line. Grid 100 feet into black						
<b>7. Special Instructions:</b>						
Maintain unburned fuel islands						
<b>8. Division/Group Communication Summary</b>						
Function	Channel	RX Frequency NW	RX Tone/NAC	TX Frequency NW	TX Tone/NAC	Mode
TACTICAL	1	168.0500	156.7	168.0500	156.7	A
COMMAND	10	168.4750	0000	173.8125	156.7	A
COMMAND	11	168.4750	0000	168.4750	156.7	A
AIR TO GROUND	14	164.8375	0000	164.8375	0000	A
<b>9. Prepared By (Resource Unit Leader)</b>			<b>Approved By (Planning Section Chief)</b>		<b>Date</b>	<b>Time</b>
MAGENHEIMER					08/08/2015	1820

## Division/Group Assignment List (ICS 204 WF)

<b>1. Incident Name:</b>		<b>3.</b>				
R-1 DODGE		Branch:		Division/Group:  <b>DIVISION M</b>		
<b>2. Operational Period:</b> DAY						
Date/Time From: 08/09/2015 0600	SUN	Date/Time To: 08/09/2015 1800	SUN			
<b>4. Operations Personnel</b>						
DIVISION/GROUP SUPERVISOR		DIXON VAN ORMER		AIR OPERATIONS		CHRIS INGRAM
<b>5. Resources Assigned this Period</b>						
Strike Team / Task Force / Resource Designator	LWD	Leader	Number Persons	Drop Off PT./Time	Pick Up PT./Time	
HELITACK LAS VEGAS			8			
CREW TYPE 2 COOPER CONTRACTING		PETERSON	19			
E 9910			3			
E SIERRA 9			3			
DOZER BERRYESSA			1			
HEAVY EQUIPMANET BOSS DOLAN						
<b>6. Control Operations/Work Assignments:</b>						
Construct line with dozers and hold existing line						
<b>7. Special Instructions:</b>						
Maintain unburned fuel islands.						
<b>8. Division/Group Communication Summary</b>						
Function	Channel	RX Frequency N/W	RX Tone/NAC	TX Frequency N/W	TX Tone/NAC	Mode
TACTICAL	2	168.2000	156.7	168.2000	156.7	A
COMMAND	10	168.4750	0000	173.8125	156.7	A
COMMAND	11	168.4750	0000	168.4750	156.7	A
AIR TO GROUND	14	164.8375	0000	164.8375	0000	A
<b>9. Prepared By (Resource Unit Leader)</b>			<b>Approved By (Planning Section Chief)</b>		<b>Date</b>	<b>Time</b>
MAGENHEIMER					08/08/2015	1835

## Division/Group Assignment List (ICS 204 WF)

<b>1. Incident Name:</b>		<b>3.</b>				
R-1 DODGE		Branch:		Division/Group:  <b>DIVISION Q</b>		
<b>2. Operational Period:</b> DAY						
Date/Time From: 08/09/2015 0600	SUN	Date/Time To: 08/09/2015 1800	SUN			
<b>4. Operations Personnel</b>						
<b>DIVISION/GROUP SUPERVISOR</b>		DUNING, ERIC JAY GANNON, JAMES		<b>AIR OPERATIONS</b>		CHRIS INGRAM
<b>5. Resources Assigned this Period</b>						
Strike Team / Task Force / Resource Designator		LWD	Leader	Number Persons	Drop Off PT./Time	Pick Up PT./Time
TYPE 2 CREW ACOMA			VALLO	20		
TYPE 2 CREW FOLSOM				20		
E 5273			COOPER	3		
E 5274			MORGAN	3		
SAFETY OFFICER			FEMMEL	1		
<b>6. Control Operations/Work Assignments:</b>						
Construct line and hold existing line						
<b>7. Special Instructions:</b>						
Fly Acoma Crew to drop-point H-20						
Maintain unburned fuel islands.						
<b>8. Division/Group Communication Summary</b>						
Function	Channel	RX Frequency N/W	RX Tone/NAC	TX Frequency N/W	TX Tone/NAC	Mode
TACTICAL	3	168.6000	156.7	168.6000	156.7	A
COMMAND	10	168.4750	0000	173.8125	156.7	A
COMMAND	11	168.4750	0000	168.4750	156.7	A
AIR TO GROUND	14	164.8375	0000	164.8375	0000	A
<b>9. Prepared By (Resource Unit Leader)</b>			<b>Approved By (Planning Section Chief)</b>		<b>Date</b>	<b>Time</b>
MAGENHEIMER					08/08/2015	1915





## Division/Group Assignment List (ICS 204 WF)

<b>1. Incident Name:</b>			<b>3.</b>			
R-1 DODGE			<b>Branch:</b>		<b>Division/Group:</b>  <b>DIVISION Y</b>	
<b>2. Operational Period:</b> <b>DAY</b>						
Date/Time From: 08/09/2015 0600                      SUN		Date/Time To: 08/09/2015 1800                      SUN				
<b>4. Operations Personnel</b>						
<b>DIVISION/GROUP SUPERVISOR</b>			<b>AIR OPERATIONS</b>		<b>CHRIS INGRAM</b>	
JASON DANEN KRACHE (T)						
<b>5. Resources Assigned this Period</b>						
Strike Team / Task Force / Resource Designator		LWD	Leader	Number Persons	Drop Off PT./Time	Pick Up PT./Time
CREW TYPE 2 MHR1			SMITH	19		
CREW TYPE 2 WNA 1			SHARP	20		
NEVADA TASK FORCE 3			VANDERSLICE	21		
DOZER HOLT				1		
HEAVY EQUIPMENT BOSS SANTO						
SAFETY OFFICER RAMEKERS						
<b>6. Control Operations/Work Assignments:</b>						
Continue line construction and hold existing line and tie in retardant line where possible						
<b>7. Special Instructions:</b>						
Maintain unburned fuel islands						
<b>8. Division/Group Communication Summary</b>						
Function	Channel	RX Frequency N/W	RX Tone/NAC	TX Frequency N/W	TX Tone/NAC	Mode
TACTICAL	4	166.7250	156.7	166.7250	156.7	A
COMMAND	10	168.4750	0000	173.8125	156.7	A
COMMAND	11	168.4750	0000	168.4750	156.7	A
AIR TO GROUND	14	164.8375	0000	164.8375	0000	A
<b>9. Prepared By (Resource Unit Leader)</b>			<b>Approved By (Planning Section Chief)</b>		<b>Date</b>	<b>Time</b>
MAGENHEIMER			MAGENHEIMER		08/08/2015	1900

## Division/Group Assignment List (ICS 204 WF)

<b>1. Incident Name:</b>		<b>3.</b>				
R-1 DODGE		<b>Branch:</b>	<b>Division/Group:</b>			
<b>2. Operational Period:</b> DAY		<b>DROP POINT 1 STAGING</b>				
Date/Time From: 08/09/2015 0600      SUN	Date/Time To: 08/09/2015 1800      SUN					
<b>4. Operations Personnel</b>						
<b>DIVISION/GROUP SUPERVISOR</b>	LARSON	<b>AIR OPERATIONS</b>	INGRAM			
<b>5. Resources Assigned this Period</b>						
Strike Team / Task Force / Resource Designator	LWD	Leader	Number Persons	Drop Off PT./Time	Pick Up PT./Time	
WATER TENDER E 3		MCGILL	1			
WATER TENDER E 4			1			
WATER TENDER E 9		PHILLIPS	1			
WATER TENDER E 10		BRUNER	1			
WATER TENDER E 11			1			
WATER TENDER E 50						
DOZER LNF 21			2			
DOZER BLM 2819						
DOZER BLM 2818			2			
<b>6. Control Operations/Work Assignments:</b>						
Develop contingent plan for local IA around the fire and deploy resources as such						
<b>7. Special Instructions:</b>						
Minimize use of water out of Dodge Reservoir						
<b>8. Division/Group Communication Summary</b>						
Function	Channel	RX Frequency N/W	RX Tone/NAC	TX Frequency N/W	TX Tone/NAC	Mode
COMMAND	10	168.4750	0000	173.8125	156.7	A
<b>9. Prepared By (Resource Unit Leader)</b>			<b>Approved By (Planning Section Chief)</b>		<b>Date</b>	<b>Time</b>
MAGENHEIMER			MAGENHEIMER		08/08/2015	1910

# INCIDENT RADIO COMMUNICATIONS PLAN (ICS 205)

<b>1. Incident Name:</b>		<b>2. Date/Time Prepared:</b>		<b>3. Operational Period:</b>	
R-1 DODGE		Date: 08/07/2015 Time: 2100		Date/Time From: 08/09/2015 0600 Date/Time To: 08/09/2015 1800	
				DAY SUN	

4. Basic Radio Channel Use:										
Zone Group	Ch #	Function	Channel Name/Trunked Radio System Talkgroup	Assignment	RX Freq	RX Tone/NAC	TX Freq	TX Tone/NAC	Mode (A, D, or M)	Remarks
	1	TACTICAL	NIFC TAC 1	DIV A	168.0500	156.7	168.0500	156.7	A	
	2	TACTICAL	NIFC TAC 2	DIV M	168.2000	156.7	168.2000	156.7	A	
	3	TACTICAL	NIFC TAC 3	DIV Q	168.6000	156.7	168.6000	156.7	A	
	4	TACTICAL	NIFC TAC 4	DIV Y	166.7250	156.7	166.7250	156.7	A	
	5	TACTICAL	NIFC TAC 5	DIV T	166.7750	156.7	166.7750	156.7	A	
	6	TACTICAL	NIFC TAC 6	UNASSIGNED	168.2500	156.7	168.2500	156.7	A	
	7	TACTICAL	NIFC TAC 7	UNASSIGNED	166.6750	156.7	166.6750	156.7	A	
	8	TACTICAL	NIFC TAC 8	MEDICAL	154.2650	0000	154.2650	0000	A	
	9	TACTICAL	NIFC TAC 9	UNASSIGNED	169.2000	156.7	169.2000	156.7	A	
	10	COMMAND	NIFC COMMAND 6	COMMAND ALL	168.4750	0000	173.8125	156.7	A	
	11	COMMAND	NIFC CMD DIR	ALL DIVISIONS	168.4750	0000	168.4750	156.7	A	
	12	COMMAND	BLM RPT	COMMAND BACKUP	172.8125	0000	166.3125	167.9	A	
	13	COMMAND	NIFC COMMAND 8	ALL DIVISIONS	169.5375	0000	164.7125	156.7	A	
	14	AIR TO GROUND	AIR GROUND	ALL DIVISIONS	164.8375	0000	164.8375	0000	A	
	15	COMMAND	NIFC COMMAND 10	COMMAND ALL	170.4125	0000	165.9625	156.7	A	
	16	AIR GUARD	AIR GUARD	ALL DIVISIONS	168.6250	0000	168.6250	110.9	A	

5. Special Instructions:	

<b>6. Prepared By</b>	Signature:
(Communications Unit Leader)	
ICS 205	Date/Time: 08/07/2015 2100



**SAFETY MESSAGE**  
**SAFETY IS OUR FIRST PRIORITY**  
*Fire fighter safety comes first on every fire, every time*

Incident R-1 Dodge	Date 08/09/2015	Shift Day
--------------------	-----------------	-----------

LCES      INCIDENT RESPONSE POCKET GUIDE      REST/WORK GUIDELINES

**SAFETY THOUGHT**



**MAJOR HAZARDS AND RISKS**

A Road Traffic	D	G
B Dehydration	E	H
C Air Operations	F	I

**\*\*YOU ARE RESPONSIBLE FOR YOUR OWN SAFETY\*\***

-If you practice safety, your co-workers will appreciate it and your personal welfare can be protected.

Remember --It is your life that is on the line. You have the right to voice your opinion and concerns about personal safety. Don't hesitate to speak up if you feel uncomfortable with the situation or the circumstance which you are in. Firefighting is inherently hazardous. Discuss your concerns with your immediate supervisor or with a Safety Officer. We are in this together!

**FIRE SAFETY  
 BEGINS WITH  
 U**

Line Safety Officer	Safety Officer
Hade, Ramekers, Femmel	Fraser

## Medical Plan (ICS 206 WF)

<b>1. Incident/Project Name:</b>		<b>2. Operational Period:</b> DAY					
R-1 DODGE		Date/Time From: 08/09/2015 0600 SUN		Date/Time To: 08/09/2015 1800 SUN			
<b>3. Ambulance Services</b>							
Name	Complete Address	Phone & EMS Frequency	Advanced Life Support (ALS)				
			Yes	No			
SEMSA	SUSANVILLE, CA 96130	(530) 257-5575	X				
<b>4. Air Ambulance Services</b>							
Name	Phone	Type of Aircraft	Capability				
MOUNTAIN LIFEFLIGHT	(530) 257-5575	A STAR	1 PATIENT				
<b>5. Hospitals</b>							
Name Complete Address	GPS Datum - WGS 84 Coordinate Standard Degrees Decimal Minutes DD° MM.MMM' N - Lat DD° MM.MMM' W - Long	Travel Time		Phone	Helipad		Level of Care Facility
		Air	Ground		Yes	No	
BANNER LASSEN MEDICAL 1800 SPRING RIDGE DRIVE SUSANVILLE, CA 96130	Lat: 40 26.182N Long: 120 39.237W VHF:	25 MINUTES	120 MINUTES	(530) 252-2000	X		LEVEL 3 TRAUMA
RENOWN MEDICAL CENTER 1155 MILL STREET RENO, NV 89502	Lat: 39 31.280N Long: 119 47.440W VHF: TX:468.100 RX:463.100 PL TONE: 24	34 MINUTES	3.5 HOURS	(775) 982-4100	X		TRAUMA/STEMI/STROKE
UC DAVIS BURN CENTER 2315 STOCKTON BLVD SACRAMENTO, CA 95817	Lat: 38 33.160N Long: 119 27.270W VHF: TX: 155.30 RX: 155.30	75 INUTES	5.5 HOURS	(916) 734-3636	X		BURN CENTER
<b>6. Area Location Capability</b>							
Branch Division/Group							
<b>8. Prepared By (Medical Unit Leader)</b>		<b>9. Date/Time</b>		<b>10. Reviewed By (Safety Officer)</b>		<b>11. Date/Time</b>	
MICHAEL PORTER MEDL(T)		08/08/2015 2100		SCOTT FRASER SOFR		08/08/2015 2100	

## Medical Plan (ICS 206 WF)

<b>1. Incident/Project Name:</b>		<b>2. Operational Period:</b> DAY	
R-1 DODGE		Date/Time From: 08/09/2015 0600 SUN	Date/Time To: 08/09/2015 1800 SUN
<b>6. Area Location Capability</b>			
<b>Branch Division/Group</b>			
A	EMS Responders & Capability:	CREW EMTS/EMT-BASIC	
	Equipment Available on Scene:	EMT-BASIC	
	Medical Emergency Channel:	TAC 8	
	ETA for Ambulance to Scene:		
	Air:	30 MINUTES	
	Ground:	120 MINUTES	
	Approved Helispot:		
	Lat:	PER DIV SUP	
	Long:	PER DIV SUP	
M	EMS Responders & Capability:	CREW EMTS/EMT--BASIC	
	Equipment Available on Scene:	EMT-BASIC	
	Medical Emergency Channel:	TAC 8	
	ETA for Ambulance to Scene:		
	Air:	30 MINUTES	
	Ground:	120 MINUTES	
	Approved Helispot:		
	Lat:	PER DIV SUP	
	Long:	PER DIV SUP	
Q	EMS Responders & Capability:	BRIAN KING - FEMT/EMT-BASIC	
	Equipment Available on Scene:	EMT-BASIC	
	Medical Emergency Channel:	TAC 8	
	ETA for Ambulance to Scene:		
	Air:	30 MINUTES	
	Ground:	120 MINUTES	
	Approved Helispot:		
	Lat:	PER DIV SUP	
	Long:	PER DIV SUP	
<b>8. Prepared By (Medical Unit Leader)</b>		<b>9. Date/Time</b>	<b>10. Reviewed By (Safety Officer)</b>
MICHAEL PORTER MEDL(T)		08/08/2015 2100	SCOTT FRASER SOFR
			<b>11. Date/Time</b>
			08/08/2015 2100

## Medical Plan (ICS 206 WF)

<b>1. Incident/Project Name:</b>		<b>2. Operational Period:</b> DAY	
R-1 DODGE		Date/Time From: 08/09/2015 0600 SUN	Date/Time To: 08/09/2015 1800 SUN
<b>6. Area Location Capability</b>			
<b>Branch Division/Group</b>			
T	EMS Responders & Capability:	CREW EMTS/EMT-BASIC	
	Equipment Available on Scene:	EMT-BASIC	
	Medical Emergency Channel:	TAC 8	
	ETA for Ambulance to Scene:		
	Air:	30 MINUTES	
	Ground:	120 MINUTES	
	Approved Helispot:		
	Lat:	PER DIV SUP	
	Long:	PER DIV SUP	
Y	EMS Responders & Capability:	CREW EMTS /EMT-BASIC	
	Equipment Available on Scene:	EMT-BASIC	
	Medical Emergency Channel:	TAC 8	
	ETA for Ambulance to Scene:		
	Air:	30 MINUTES	
	Ground:	120M INUTES	
	Approved Helispot:		
	Lat:	PER DIV SUP	
	Long:	PER DIV SUP	
DODGE HELIBASE	EMS Responders & Capability:	AMBULANCE 174/ALS CAPABILITY	
	Equipment Available on Scene:	ALS	
	Medical Emergency Channel:	TAC 8	
	ETA for Ambulance to Scene:		
	Air:	20 MINUTES	
	Ground:	60 MINUTES	
	Approved Helispot:		
	Lat:		
	Long:		
<b>7. Remote Camp Location(s)</b>			
<b>Name &amp; Location</b>			
<b>8. Prepared By (Medical Unit Leader)</b>	<b>9. Date/Time</b>	<b>10. Reviewed By (Safety Officer)</b>	<b>11. Date/Time</b>
MICHAEL PORTER MEDL(T)	08/08/2015 2100	SCOTT FRASER SOFR	08/08/2015 2100



## Medical Plan (ICS 206 WF)

<b>1. Incident/Project Name:</b>		<b>2. Operational Period:</b> DAY	
R-1 DODGE		Date/Time From: 08/09/2015 0600 SUN	Date/Time To: 08/09/2015 1800 SUN
<b>7. Remote Camp Location(s)</b>			
<b>Name &amp; Location</b>			
	Point Of Contact:		
	EMS Responders & Capability		
	Equipment Available on Scene:		
	Medical Emergency Channel:		
	ETA for Ambulance To Scene:		
	Air:		
	Ground:		
	Approved Helispot:		
	Lat:		
	Long:		
<b>8. Prepared By (Medical Unit Leader)</b>	<b>9. Date/Time</b>	<b>10. Reviewed By (Safety Officer)</b>	<b>11. Date/Time</b>
MICHAEL PORTER MEDL(T)	08/08/2015 2100	SCOTT FRASER SOFR	08/08/2015 2100

# MEDICAL PLAN (ICS 206)

## 12. Medical Incident Procedures

**FOR ALL MEDICAL EMERGENCIES: IDENTIFY ON SCENE INCIDENT COMMANDER BY NAME AND POSITION AND ANNOUNCE "MEDICAL EMERGENCY" TO INITIATE RESPONSE FROM IMT COMMUNICATIONS/DISPATCH.**

### Medical Incident Report

Use items one through nine to communicate situation to communications/dispatch.

**1. CONTACT COMMUNICATIONS/DISPATCH**

Ex: "Communications: Div. Alpha. Stand-by for Priority Medical Incident Report." (If life threatening, request designated frequency be cleared for emergency traffic.)

**2. INCIDENT STATUS: Provide incident summary and command structure.**

<b>Nature of Injury/Illness</b>		<i>Describe the injury (Ex: Broken leg with bleeding)</i>
Incident Name		<i>Geographic Name + "Medical" (Ex: Trout Meadow Medical)</i>
Incident Commander		<i>Name of IC</i>
Patient Care		<i>Name of Care Provider (Ex: EMT Smith)</i>

**3. INITIAL PATIENT ASSESSMENT:**

Complete this section for each patient. This is only a brief, initial assessment. Provide additional patient info after completing this 9 Line Report.

Number of Patients:	Male / Female	Age:	Weight:
Conscious?	<input type="checkbox"/> YES		<input type="checkbox"/> NO = MEDEVAC!
Breathing?	<input type="checkbox"/> YES		<input type="checkbox"/> NO = MEDEVAC!
Mechanism of Injury: <i>What caused the injury?</i>			
Lat/Long (Datum WG884) Ex: N 40° 42.45' x W 123° 03.24'			

**4. SEVERITY OF EMERGENCY, TRANSPORT PRIORITY**

SEVERITY	TRANSPORT PRIORITY
<input type="checkbox"/> <b>URGENT-RED</b> Life threatening injury or illness. Ex: Unconscious, difficulty breathing, bleeding severely, 2 - 3 degree burns more than 4 palm sizes, heat stroke, disoriented.	Ambulance or MEDEVAC helicopter. Evacuation need is <b>IMMEDIATE</b> .
<input type="checkbox"/> <b>PRIORITY-YELLOW</b> Serious Injury or illness. Ex: Significant trauma, not able to walk, 2 - 3 degree burns not more than 1-2 palm sizes.	Ambulance or consider air transport if at remote location. Evacuation may be <b>DELAYED</b> .
<input type="checkbox"/> <b>ROUTINE-GREEN</b> Not a life threatening injury or illness. Ex: Sprains, strains, minor heat-related illness.	Non-Emergency. Evacuation considered <b>Routine of Convenience</b> .

**5. TRANSPORT PLAN:**

<b>Air Transport:</b> (Agency Aircraft Preferred)			
<input type="checkbox"/> Helispot	<input type="checkbox"/> Short-haul/Hoist	<input type="checkbox"/> Life Flight	<input type="checkbox"/> Other
<b>Ground Transport:</b>			
<input type="checkbox"/> Self-Extract	<input type="checkbox"/> Carry-Out	<input type="checkbox"/> Ambulance	<input type="checkbox"/> Other

**6. ADDITIONAL RESOURCE/EQUIPMENT NEEDS:**

<input type="checkbox"/> Paramedic/EMT(s)	<input type="checkbox"/> Crew(s)	<input type="checkbox"/> SKED/Backboard/C-Collar
<input type="checkbox"/> Burn Sheet(s)	<input type="checkbox"/> Oxygen	<input type="checkbox"/> Trauma Bag
<input type="checkbox"/> Medication(s)	<input type="checkbox"/> IV/Fluid(s)	<input type="checkbox"/> Cardiac Monitor/AED
<input type="checkbox"/> Other (i.e. splints, rope rescue, wheeled litter)		

**7. COMMUNICATIONS:**

Function	Channel Name/Number	Receive (Rx)	Tone/NAC *	Transmit (Tx)	Tone/NAC *
Ex: Command	Forest Rpt, Ch. 2	168.3250	110.9	171.4325	110.9
COMMAND					
AIR-TO-GRND					
TACTICAL					

\*(NAC for digital radio system)

**8. EVACUATION LOCATION:**

Lat/Long (Datum WG884) EX: N 40 42.45' x W 123 03.24'	
Patient's ETA to Evacuation Location:	
Helispot/Extraction Size and Hazards:	

**9. CONTINGENCY:**

*Considerations: If primary options fail, what actions can be implemented in conjunction with primary evacuation method? Be thinking ahead...*

**REMEMBER:**

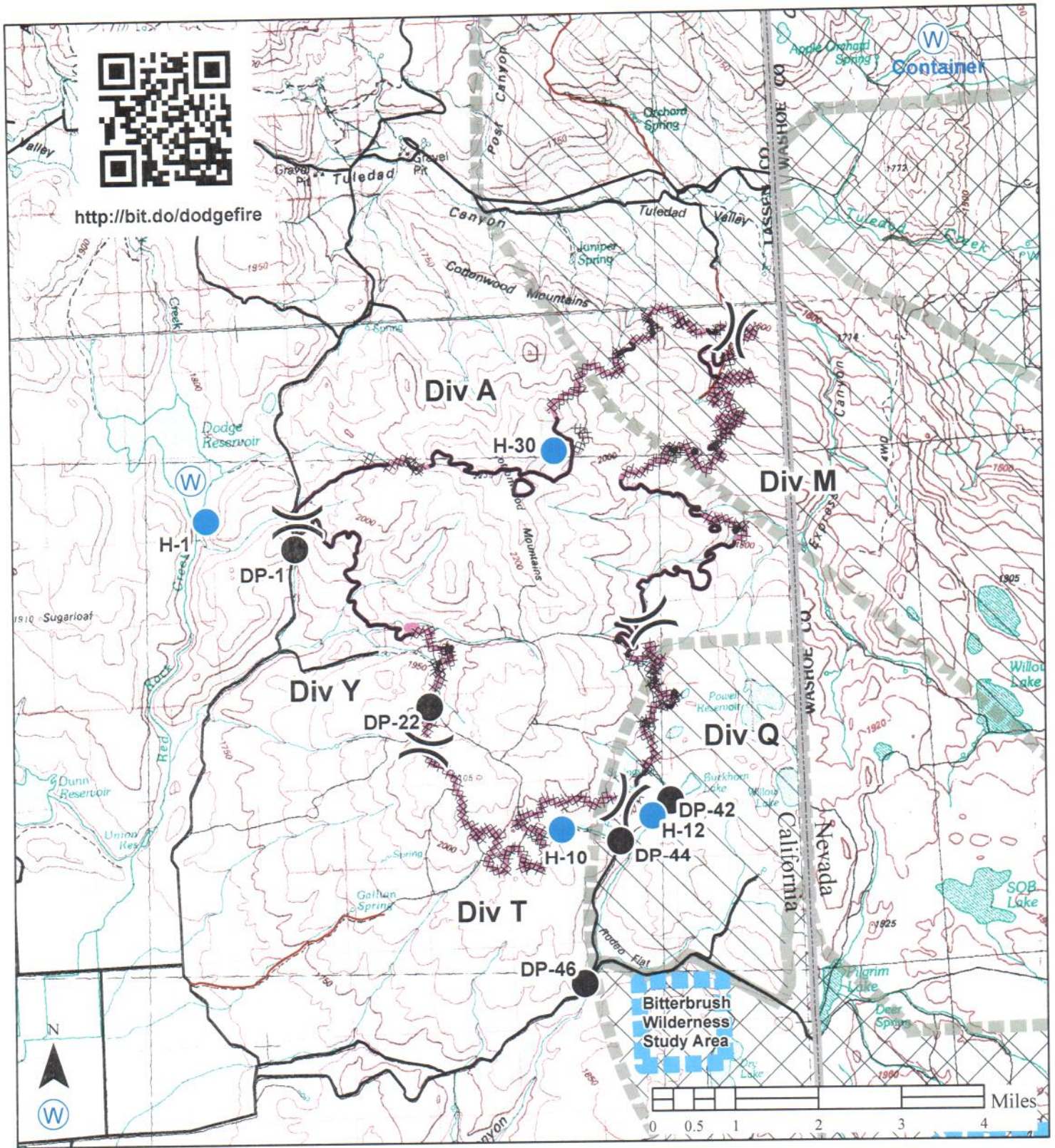
- Confirm ETA's of resources ordered
- Act according to your level of training
- Be Alert. Keep Calm. Think Clearly. Act Decisively.

# AIR OPERATIONS SUMMARY (ICS 220)

<b>1. Incident Name:</b>		<b>2. Operational Period:</b> DAY		<b>3. Sunrise:</b>		<b>Sunset:</b>	
R-1 DODGE		Date/Time From: 08/09/2015 0600 SUN		Date/Time To: 08/09/2015 1800 SUN		0607 2008	
<b>4. Remarks</b> (Safety Notes, Hazards, Air Op Special Equipment, etc.) Hazard: Military aircraft operating unannounced Herlong Military Base: C-130, C-5, C-17(s) VLAT and C-130 MAFFS being used. Hazard: I MET Tower (Windmill) Lat: Degrees 40 57 57.82N Long: Degrees 120 03 53.01W		<b>5. Ready Alert Aircraft:</b> Medivac: HELICOPTER 1BH New Incident:					
<b>7. Personnel:</b>		<b>8. Frequencies:</b>		<b>9. Fixed-Wing</b>		<b>Air Tactical Group Supervisor Aircraft:</b>	
Name:	Phone Number:	Air/Air Fixed-Wing	AM (Tone)	FM (Tone)	AA-06 AERO COMMANDER, CHESTER AIRBASE		
AIR OPERATIONS BRANCH DIRECTOR	(775) 240-2289	Air/Air Rotary-Wing - Flight Following	135.025 000.0	169.8250	TAIL # 4CT		
AIR SUPPORT GROUP SUPERVISOR		Air/Ground		164.8375 000.0			
AIR TACTICAL GROUP SUPERVISOR	(559) 281-0533	nifc Command 6		168.4750 156.7			
HELICOPTER COORDINATOR		Deck Coordinator					
HELIBASE MANAGER	(702) 556-2255	Take-Off & Landing Coordinator			<b>Other Fixed-Wing Aircraft:</b>		
		Air Guard		168.625 110.9	SEAT AT 802 T-806, STEAD TANKER BASE		
					SEAT AT 802 T-810, STEAD TANKER BASE		
					SEAT AT 802 T-818, CHESTER AIRBASE		
					SEAT AT 802 T-886, CHESTER AIRBASE		
					SEAT AT 802 T-894, CHESTER AIRBASE		
					SEAT AT 802 T-895, CHESTER AIRBASE		
<b>11. Prepared by:</b> Name: CHRIS INGRAM		Position/Title: AOBD		Signature:			
ICS 220, Page 1 of 2		Date/Time: 08/07/2015 2030					

## AIR OPERATIONS SUMMARY (ICS 220)

1. Incident Name:		2. Operational Period: DAY		3. Sunrise:	Sunset:	
R-1 DODGE		Date/Time From: 08/09/2015 0600	DAY SUN	0607	2008	
		Date/Time To: 08/09/2015 1800	SUN			
<b>10. Helicopters</b> (use additional sheets as necessary):						
FAA N#	Category/Kind/Type	Make/Model	Base	Available	Start	Remarks
1BH	TYPE 3	AS350 B3C	SALT LAKE	0800	0900	Dodge Fire Helibase deg 40 53.43, deg 120 11.99. Available for regional IA and Med Evac.
3AE	TYPE 3	AS350 B3C	LAS VEGAS		0900	Dodge Fire Helibase. deg 40 53.43, deg 120 11.99
<b>12. Task/Mission/Assignment</b> (category/kind/type and function includes: air tactical, reconnaissance, personnel transport, search and rescue, etc.):						
Category/Kind/Type and Function	Name of Personnel or Cargo (if applicable) or Instructions for Tactical Aircraft	Mission Start	Fly From	Fly To		
<b>11. Prepared by:</b> Name: CHRIS INGRAM					Signature:	
ICS 220, Page 2 of 2					Position/Title: AOBD	
					Date/Time: 08/07/2015 2030	

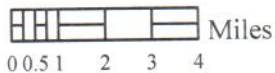
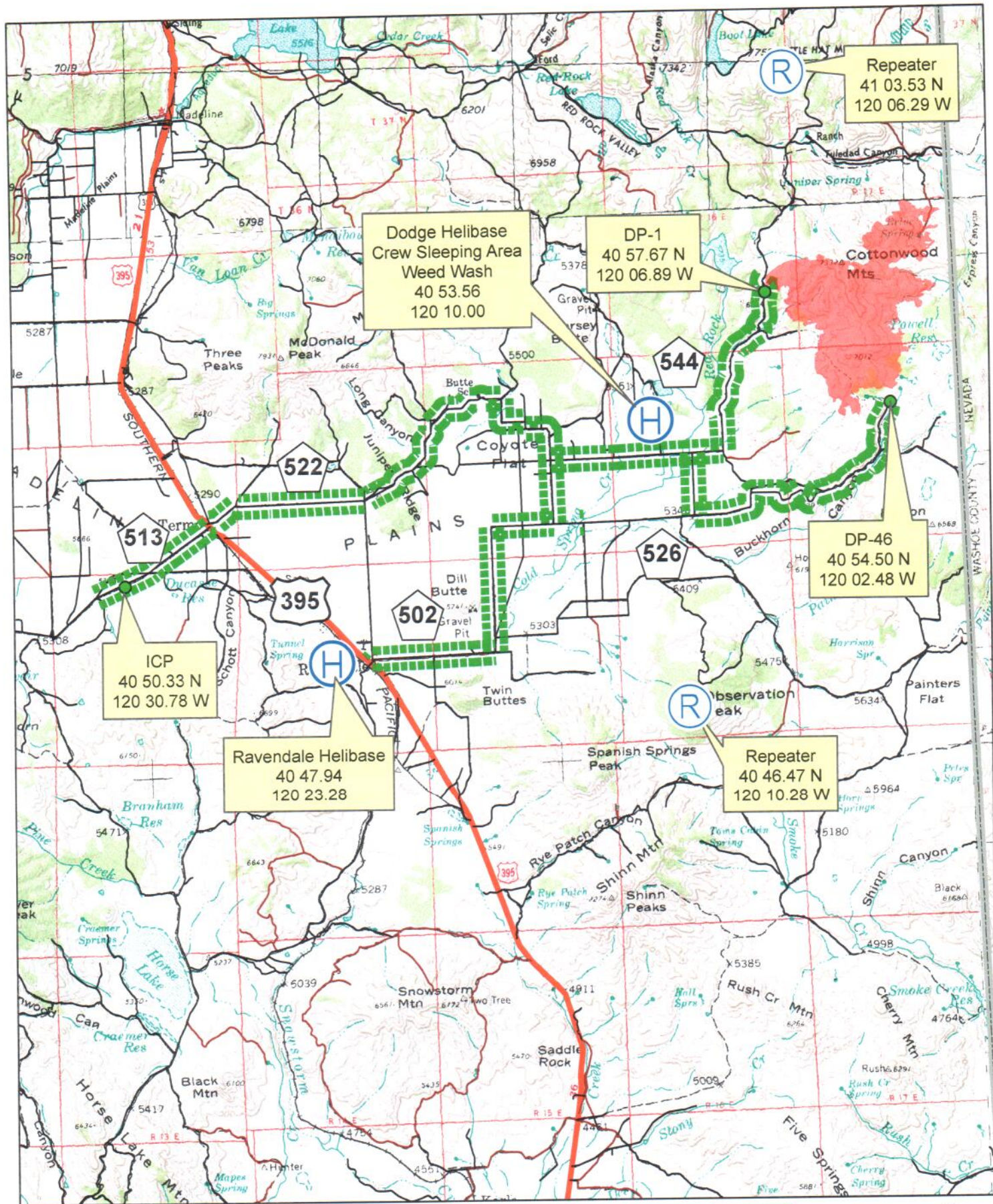


**Dodge Fire  
IAP Map**  
CA-NOD-003806  
8/9/2015  
10,570 ac



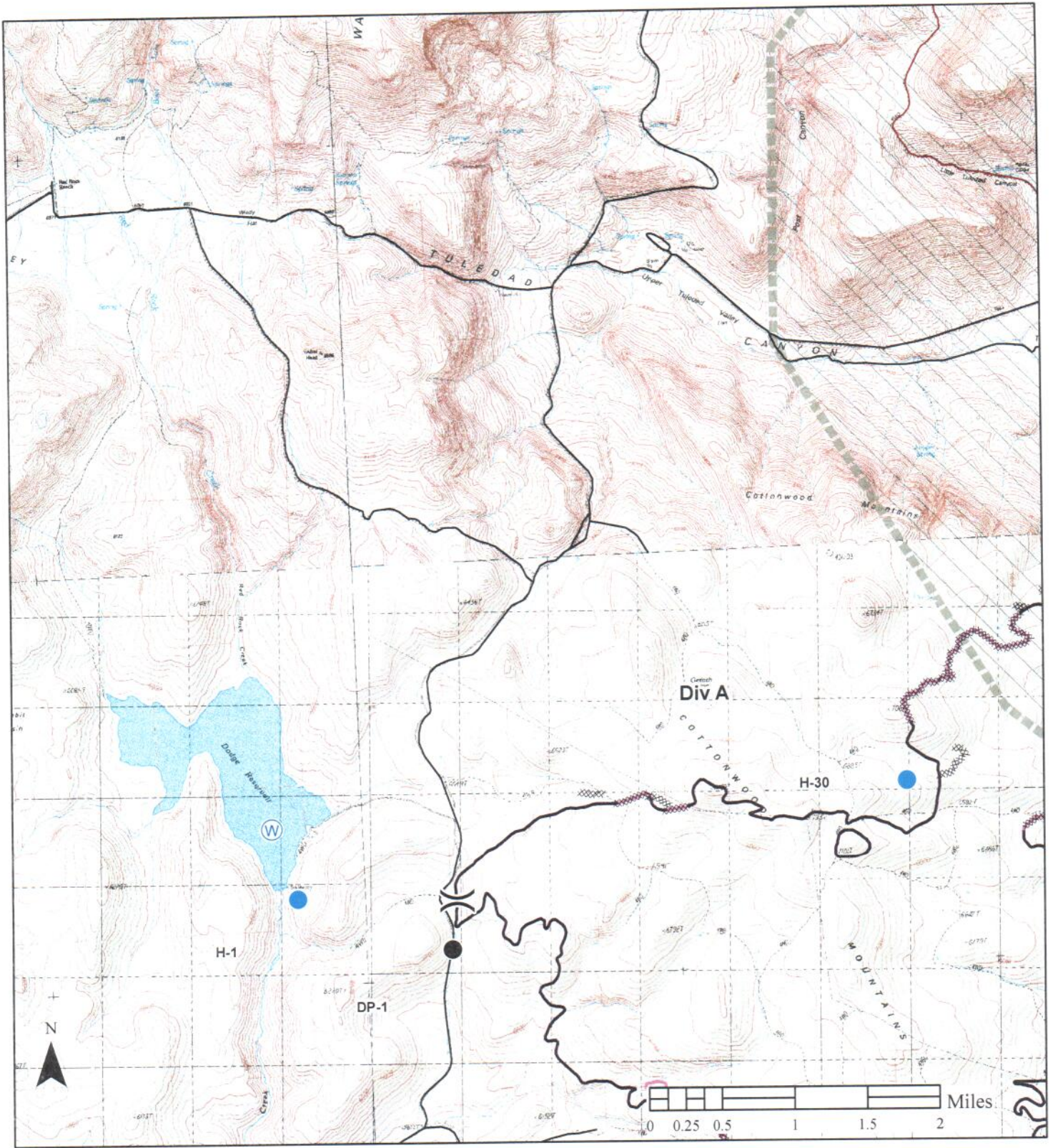
**Legend**

- Uncontrolled Fire Edge
- Completed Dozer Line
- Completed Line
- Drop Point
- Helispot
- Water Source
- FIAT Suppression Priorities**
- High
- Moderate



**Dodge Fire Transport Map**  
CA-NOD-003806 8/9/2015





**Dodge Fire**  
**IAP Map**  
 CA-NOD-003806  
 8/9/2015  
 10,570 ac

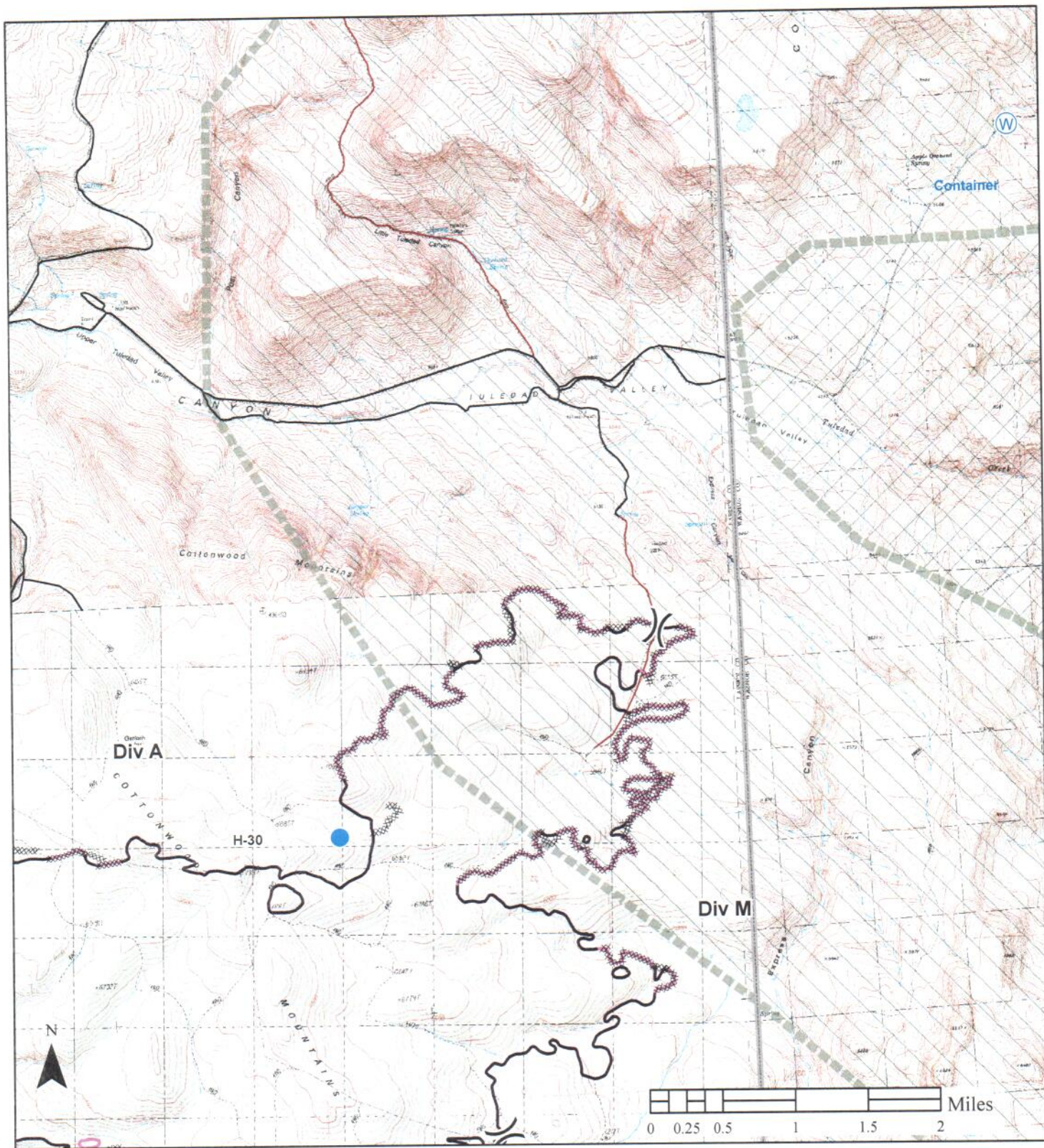


Nate Rasner  
 Sierra Front IMT



**Legend**

- Uncontrolled Fire Edge
- Completed Dozer Line
- Completed Line
- Drop Point
- Helispot
- Water Source
- FIAT Suppression Priorities**
- High
- Moderate



**Dodge Fire**  
**IAP Map**  
 CA-NOD-003806  
 8/9/2015  
 10,570 ac



Nate Rasner  
 Sierra Front IMT



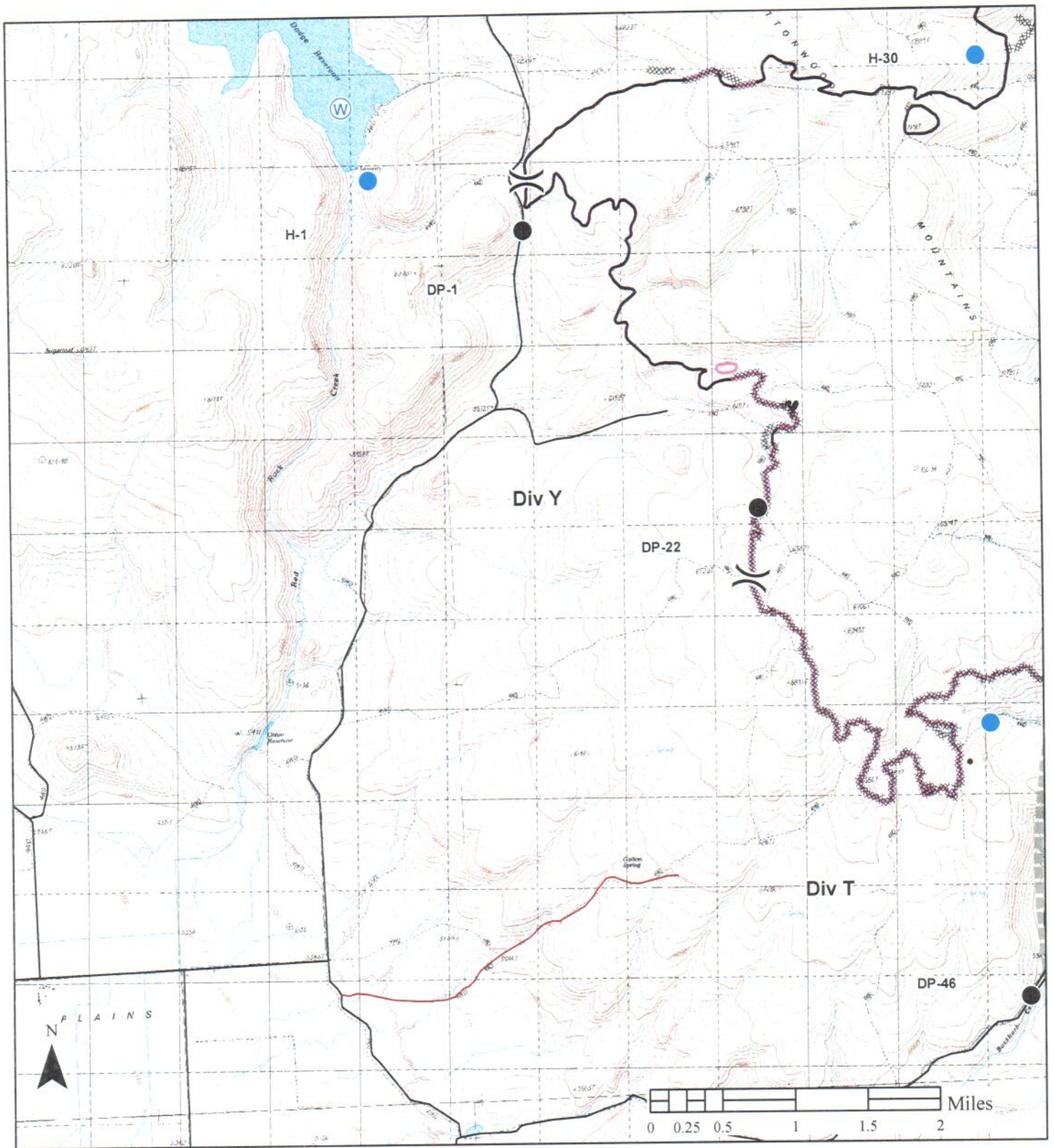
- Uncontrolled Fire Edge
- Completed Dozer Line
- Completed Line
- Drop Point

- Helispot
- Water Source

**Legend**

- FIAT Suppression Priorities**
- High
  - Moderate













**Dodge Fire**  
**IAP Map**  
 CA-NOD-003806  
 8/9/2015  
 10,570 ac

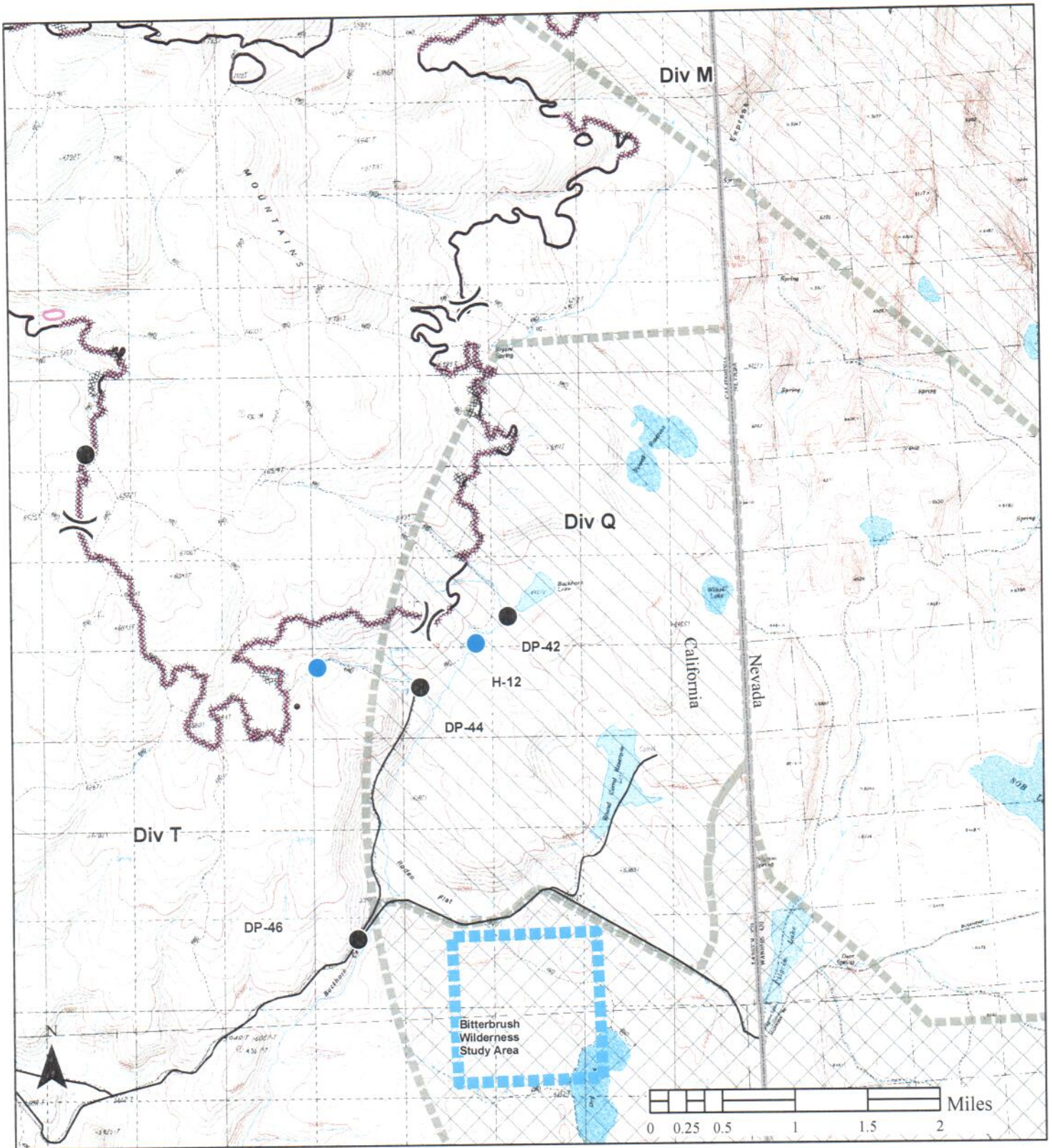


Nate Rasner  
 Sierra Front IMT



**Legend**

-  Uncontrolled Fire Edge
-  Completed Dozer Line
-  Completed Line
-  Drop Point
-  Helispot
-  Water Source
- FIAT Suppression Priorities**
-  High
-  Moderate



**Dodge Fire**  
**IAP Map**  
 CA-NOD-003806  
 8/9/2015  
 10,570 ac



Nate Rasner  
 Sierra Front IMT



- Uncontrolled Fire Edge
- Completed Dozer Line
- Completed Line
- Drop Point

**Legend**

- Helispot
- Water Source

**FIAT Suppression Priorities**

- High
- Moderate