



In memory of Mike Hallenbeck, USFS Lake Tahoe Basin Management Unit, tragically killed in the line of duty during fire suppression activities, August 8<sup>th</sup>, 2015.

# Dodge Fire

## Incident Action Plan

### August 10, 2015

### Day Operations

R-1 Dodge  
CA-NOD-003806  
J0SD

---

# INCIDENT OBJECTIVES (ICS 202)

<b>1. Incident Name:</b>	<b>2. Operational Period:</b> DAY	
R-1 DODGE	Date/Time From: 08/10/2015 0600 MON	Date/Time To: 08/10/2015 1800 MON

**3. Objective(s):**

**Firefighter and public safety will be the number one concern** in all fire management activities

-Assure that safety of firefighter, aviation, support personnel, and the public is the highest priority at all times for the duration of the incident

Protect all structures, private lands and values at risk without compromising firefighter and public safety.

Utilize resources cost-effectively

Protect all **sage grouse habitat ,cultural resources, wilderness study areas and recreation areas.**

**4. Operational Period Command Emphasis:**

Keep the Fire within current containment lines

-

**General Situational Awareness:**

Due to drought, wind, and fuel conditions the fire behavior has been moderate to high. Fire growth is mainly high due to current and predicted weather conditions for the next several days

**5. Site Safety Plan Required?** Yes  No

**Approved Site Safety Plan(s) Located at:**

**6. Incident Action Plan** (the items checked below are included in this Incident Action Plan):

<input checked="" type="checkbox"/> ICS 202	<input type="checkbox"/> ICS 207	Other Attachments: <input type="checkbox"/> _____ <input type="checkbox"/> _____ <input type="checkbox"/> _____ <input type="checkbox"/> _____
<input checked="" type="checkbox"/> ICS 203	<input type="checkbox"/> ICS 208	
<input checked="" type="checkbox"/> ICS 204	<input checked="" type="checkbox"/> ICS 220	
<input checked="" type="checkbox"/> ICS 205	<input checked="" type="checkbox"/> Map/Chart	
<input type="checkbox"/> ICS 205A	<input checked="" type="checkbox"/> Weather Forecast/Tides/Currents	
<input type="checkbox"/> ICS 206		

<b>7. Prepared by:</b> MAGENHEIMER	Position/Title: PSC3	Signature: _____
<b>8. Approved by Incident Commander:</b>	Name: <i>Wate Rasner</i>	Signature: <i>[Signature]</i>
ICS 202	IAP Page	Date/Time: 08/09/2015 2015

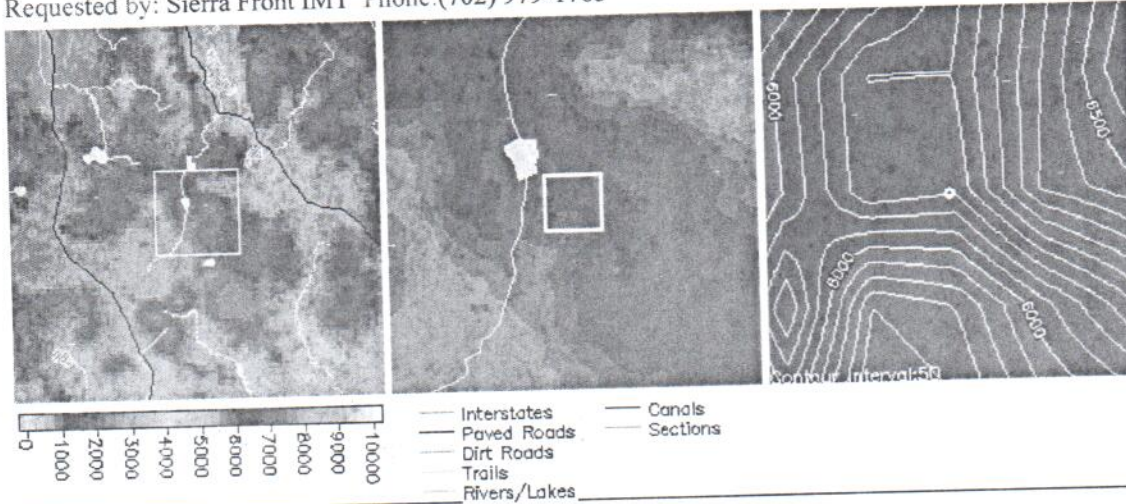
## ORGANIZATION ASSIGNMENT LIST (ICS 203)

<b>1. Incident Name:</b>		<b>2. Operational Period: DAY</b>	
R-1 DODGE		Date/Time From: 08/10/2015 0600	Date/Time To: 08/10/2015 1800
		MON	MON
<b>3. Incident Commander(s) and Command Staff:</b>		LOGISTICS	
IC	NATE RASNER MARK WINKLEMAN (T)	<b>7. Operations Section:</b>	
IC	LUIS GOMEZ (T)	DAY OPS SECTION CHIEF	MIKE HEIKKA
SAFETY OFFICER	SCOTT FRASER	PLANNING OPS	RYAN SOMMERS
INFORMATION OFFICER	BETH KENNA MARK REGAN	OPS SECTION CHIEF	
LIAISON OFFICER		DEPUTY OPS SECTION CHIEF	
		STAGING AREA	
<b>4. Agency/Organization Representative(s):</b>			
<b>Agency/Organization</b>	<b>Name</b>	<b>7b. Air Operations Branch:</b>	
DISTRICT MANAGER	NANCY HAUG	AIR OPS BRANCH DIRECTOR	CHRIS INGRAM
BLM AREA REP	EMILY RYAN	AIR ATTACK SUPERVISOR	
BLM AREA REP	DENNIS SYLVIA	AIR SUPPORT SUPERVISOR	
DFMO NORCAL DISTRICT	WALTER HERZOG	HELICOPTER COORDINATOR	
<b>5. Planning Section:</b>		AIR TANKER COORDINATOR	
CHIEF	CHRIS MAGENHEIMER	<b>8. Finance/Administration Section:</b>	
DEPUTY		CHIEF	BONNIE KENNEDY
RESOURCES UNIT	TERRE PEARSON RAMIREZ	EQUIPMENT COSTS	DONNA COONEY
SITUATION UNIT		TIME UNIT	ZANDRA ZAVALZA
DOCUMENTATION UNIT			
DEMOBILIZATION UNIT			
FIRE BEHAVIOR ANALYST			
HUMAN RESOURCE SPECIALIST			
TRAINING SPECIALIST			
GIS SPECIALIST	FOREST SCHAFFER		
COMPUTER SPECIALIST			
INCIDENT METEOROLOGIST			
<b>6. Logistics Section:</b>			
CHIEF	JUSTIN LANGFORD EMILY LUTZ		
CHIEF	BOBBY WILLIS (T)		
SUPPLY UNIT			
FACILITIES UNIT			
GROUND SUPPORT UNIT			
COMMUNICATIONS UNIT	RANDY WILLIAMS MARK DOWNING (T)		
MEDICAL UNIT	ANTHONY GASPORRA MIKE PORTER (T)		
SECURITY UNIT			
FOOD UNIT	DILLE, LOYD C		
<b>9. Prepared By:</b>	<b>Name:</b> MAGENHEIMER	<b>Position/Title:</b> PSC 3	<b>Signature:</b>
ICS 203	IAP Page	<b>Date/Time:</b> 08/07/2015 1815	

**Dodge (WILDFIRE)** (Requested: 2204 PDT 8/9/15)

Forecast complete at 2229 PDT 8/9/15

Requested by: Sierra Front IMT Phone:(702) 979-1765



**Location:** Legal: Lat/Lon:40 57 29/120 6 32 Quad:  
 Calculated:(40°57'29"N 120°6'32"W) (BUCKHORN LAKE CA)  
 Elevation:61-7300 Drainage:unknown Aspect:South Size:unknown  
 Fuel Type:sage / juniper (Partially Sheltered)

**Observations:**

Place Elev Time Wind Temp Wetbulb RH Dewpt Remarks

**Requested Parameters**

**Remarks**

... Clouds / Weather	Can I please have this completed
... Temperature	around 2300 tonight.
... Relative Humidity	Thanks
... 20 Foot Wind	Chris
... Smoke Dispersion	

**FORECAST:**

IF CONDITIONS BECOME UNREPRESENTATIVE,  
 CONTACT THE NATIONAL WEATHER SERVICE.  
 DISCUSSION...SLIGHT CHANCE OF A DRY STORM EARLY THIS MORNING THEN  
 TYPICAL AFTERNOON AND EVENING WINDS ARE EXPECTED THE NEXT FEW DAYS  
 WITH A STRONGER WIND EVENT POSSIBLE THURSDAY. WIND GUSTS TO 45 MPH  
 POSSIBLE NEAR ANY THUNDERSTORMS.

FOR TODAY

WEATHER.....PARTLY CLOUDY WITH A SLIGHT CHANCE OF  
 ISOLATED DRY THUNDERSTORMS UNTIL 0600 IN THE  
 MORNING, THEN CLEARING.  
 TEMPERATURE.....MAX 76-80  
 HUMIDITY.....MIN 9-13%  
 WIND...20 FOOT....UPSLOPE 3-6 MPH BECOMING SOUTH TO SOUTHWEST  
 10-15 MPH WITH GUSTS TO 27 MPH AROUND 1400.  
 LAL.....2 UNTIL 0600 THEN 1 AFTER.  
 CWR.....0%

FOR TONIGHT

WEATHER.....PARTLY CLOUDY THEN DECREASING CLOUDS.  
 TEMPERATURE.....MIN 51-54  
 HUMIDITY.....MAX 50-53%  
 WIND...20 FOOT....WEST AROUND 8-12 MPH WITH GUSTS TO 18  
 BECOMING DOWNSLOPE 2-5 MPH BY MIDNIGHT.  
 LAL.....1

CWR.....0%

OUTLOOK FOR TOMORROW

WEATHER.....PARTLY CLOUDY  
 TEMPERATURE.....MAX 79-82  
 HUMIDITY.....MIN 9-13%  
 WIND...20 FOOT....SOUTH SOUTHWEST 10-15 MPH GUSTS TO 25 MPH IN  
 THE AFTERNOON.  
 LAL.....1  
 CWR.....0%

FORECASTER...FUENTES

\*FORECASTER NOTE: ARE SURFACE WEATHER OBSERVATIONS AVAILABLE FROM THE INCIDENT SITE?

**Please provide feedback:**

Send Feedback

CANCEL

*Printer Friendly Version of Forecast*

[Back to Spot List](#) [Copy Info to New Spot Request](#)



National Oceanic and Atmospheric Administration (NOAA)

[Privacy Policy](#)

National Weather Service  
 Fire & Public Weather Services Branch  
 Page Author: NWS Internet Services Team  
 Page last updated at 5:57 am PST 3/5/07

## Division/Group Assignment List (ICS 204 WF)

<b>1. Incident Name:</b>		<b>3.</b>				
R-1 DODGE		Branch:	Division/Group:			
<b>2. Operational Period:</b> DAY		<b>DIVISION A</b>				
Date/Time From: 08/10/2015 0600	MON	Date/Time To: 08/10/2015 1800	MON			
<b>4. Operations Personnel</b>						
DIVISION/GROUP SUPERVISOR	BRAWLEY	AIR OPERATIONS	CHRIS INGRAM			
<b>5. Resources Assigned this Period</b>						
Strike Team / Task Force / Resource Designator	LWD	Leader	Number Persons	Drop Off PT./Time	Pick Up PT./Time	
CREW TYPE 2 HVP 60		FOSTER	20			
TYPE 3 FIRESTORM E 9907		PEARCE	3			
TYPE 3 ENGINE 5274		MORGAN	3			
ENGINE TYPE 4 E 2413		PEREZ	6			
TYPE 6 E 5670		LOONEY	3			
LINE MEDIC		WEBB				
LINE MEDIC		LYMAN				
<b>6. Control Operations/Work Assignments:</b>						
Hold and improve existing line.						
Mop-up 100 feet into black						
Remove hose lays to DP 1 - request Ground Support for backhaul of hose						
<b>7. Special Instructions:</b>						
Maintain unburned fuel islands						
All vehicles to be weed washed prior to returning to home unit						
Any vehicle operating within the fire perimeter must be weed washed prior to going to the fire line						
Dodge Reservoir is available for fire suppression activities and road watering as deemed necessary by Operations						
<b>8. Division/Group Communication Summary</b>						
Function	Channel	RX Frequency N/W	RX Tone/NAC	TX Frequency N/W	TX Tone/NAC	Mode
TACTICAL	1	168.0500	156.7	168.0500	156.7	A
COMMAND	10	168.4750	0000	173.8125	156.7	A
COMMAND	11	168.4750	0000	168.4750	156.7	A
AIR TO GROUND	14	164.8375	0000	164.8375	0000	A
<b>9. Prepared By (Resource Unit Leader)</b>			<b>Approved By (Planning Section Chief)</b>		<b>Date</b>	<b>Time</b>
MAGENHEIMER					08/09/2015	1820

## Division/Group Assignment List (ICS 204 WF)

<b>1. Incident Name:</b>				<b>3.</b>		
R-1 DODGE				<b>Branch:</b>	<b>Division/Group:</b>  <b>DIVISION M</b>	
<b>2. Operational Period: DAY</b>						
Date/Time From: 08/10/2015 0600 MON		Date/Time To: 08/10/2015 1800 MON				
<b>4. Operations Personnel</b>						
<b>DIVISION/GROUP SUPERVISOR</b>		DIXON VAN ORMER		<b>AIR OPERATIONS</b>		CHRIS INGRAM
<b>5. Resources Assigned this Period</b>						
Strike Team / Task Force / Resource Designator		LWD	Leader	Number Persons	Drop Off PT./Time	Pick Up PT./Time
HELITACK LAS VEGAS				8		
CREW TYPE 2 COOPER CONTRACTING			PETERSON	19		
ENGINE TYPE 6 FIRESTORM 9910			LUDLOW	3		
TYPE 6 ENGINE SIERRA 9			ROWSEY	3		
SAFETY OFFICE			HADE			
<b>6. Control Operations/Work Assignments:</b>						
Maintain and improve existing line.						
Mop-up 100' into black..						
<b>7. Special Instructions:</b>						
Maintain unburned fuel islands.						
All vehicles to be weed washed prior to returning to home unit						
Any vehicle operating within the fire perimeter must be weed washed prior to going to the fire line						
Dodge Reservoir is available for fire suppression activities and road watering as deemed necessary by Operations						
<b>8. Division/Group Communication Summary</b>						
Function	Channel	RX Frequency N/W	RX Tone/NAC	TX Frequency N/W	TX Tone/NAC	Mode
TACTICAL	2	168.2000	156.7	168.2000	156.7	A
COMMAND	10	168.4750	0000	173.8125	156.7	A
COMMAND	11	168.4750	0000	168.4750	156.7	A
AIR TO GROUND	14	164.8375	0000	164.8375	0000	A
<b>9. Prepared By (Resource Unit Leader)</b>			<b>Approved By (Planning Section Chief)</b>		<b>Date</b>	<b>Time</b>
MAGENHEIMER					08/09/2015	1835

## Division/Group Assignment List (ICS 204 WF)

<b>1. Incident Name:</b>		<b>3.</b>				
R-1 DODGE		Branch:	Division/Group:			
<b>2. Operational Period:</b> DAY		<b>DIVISION Q</b>				
Date/Time From: 08/10/2015 0600 MON	Date/Time To: 08/10/2015 1800 MON					
<b>4. Operations Personnel</b>						
<b>DIVISION/GROUP SUPERVISOR</b>	DUNING, ERIC JAY GANNON, JAMES	AIR OPERATIONS	CHRIS INGRAM			
<b>5. Resources Assigned this Period</b>						
Strike Team / Task Force / Resource Designator	LWD	Leader	Number Persons	Drop Off PT./Time	Pick Up PT./Time	
TYPE 2 CREW ACOMA		VALLO	20			
SAFETY OFFICER		FEMMEL	1			
LINE EMT		KING				
LINE MEDIC		GARDNER				
<b>6. Control Operations/Work Assignments:</b>						
Hold and improve existing line						
Mop-up 100' into the black						
<b>7. Special Instructions:</b>						
Fly Acoma Crew to drop-point H-12						
Maintain unburned fuel islands.						
All vehicles to be weed washed prior to returning to home unit						
Any vehicle operating within the fire perimeter must be weed washed prior to going to the fire line						
Dodge Reservoir is available for fire suppression activities and road watering as deemed necessary by Operations						
<b>8. Division/Group Communication Summary</b>						
Function	Channel	RX Frequency N/W	RX Tone/NAC	TX Frequency N/W	TX Tone/NAC	Mode
TACTICAL	3	168.6000	156.7	168.6000	156.7	A
COMMAND	10	168.4750	0000	173.8125	156.7	A
COMMAND	11	168.4750	0000	168.4750	156.7	A
AIR TO GROUND	14	164.8375	0000	164.8375	0000	A
<b>9. Prepared By (Resource Unit Leader)</b>			<b>Approved By (Planning Section Chief)</b>		<b>Date</b>	<b>Time</b>
MAGENHEIMER					08/09/2015	1915



## Division/Group Assignment List (ICS 204 WF)

<b>1. Incident Name:</b>		<b>3.</b>				
R-1 DODGE		Branch:	Division/Group:			
<b>2. Operational Period:</b> DAY		<b>DIVISION T</b>				
Date/Time From: 08/10/2015 0600 MON	Date/Time To: 08/10/2015 1800 MON					
<b>4. Operations Personnel</b>						
<b>DIVISION/GROUP SUPERVISOR</b>	HAMRICK, GRANT D GREYSHIELD (T)	<b>AIR OPERATIONS</b>	CHRIS INGRAM			
<b>5. Resources Assigned this Period</b>						
Strike Team / Task Force / Resource Designator	LWD	Leader	Number Persons	Drop Off PT./Time	Pick Up PT./Time	
CREW TYPE 2 SACRAMENTO			20			
ENGINE TYPE 6 BLM E76		GENAO	4			
TYPE 2 CREW RUBICON			20			
E 5273		COOPER	3			
UTV						
SAFETY OFFICER		MOLVE				
<b>6. Control Operations/Work Assignments:</b>						
Hold and improve existing line. Grid 100 feet into black						
<b>7. Special Instructions:</b>						
Maintain unburned fuel islands						
All vehicles to be weed washed prior to returning to home unit						
Any vehicle operating within the fire perimeter must be weed washed prior to going to the fire line						
Dodge Reservoir is available for fire suppression activities and road watering as deemed necessary by Operations						
<b>8. Division/Group Communication Summary</b>						
Function	Channel	RX Frequency N/W	RX Tone/NAC	TX Frequency N/W	TX Tone/NAC	Mode
TACTICAL	5	166.7750	156.7	166.7750	156.7	A
COMMAND	10	168.4750	0000	173.8125	156.7	A
COMMAND	11	168.4750	0000	168.4750	156.7	A
AIR TO GROUND	14	164.8375	0000	164.8375	0000	A
<b>9. Prepared By (Resource Unit Leader)</b>		<b>Approved By (Planning Section Chief)</b>		<b>Date</b>	<b>Time</b>	
MAGENHEIMER				08/09/2015	1850	

## Division/Group Assignment List (ICS 204 WF)

<b>1. Incident Name:</b>		<b>3.</b>				
R-1 DODGE		Branch:	Division/Group:			
<b>2. Operational Period:</b> DAY		<b>DIVISION Y</b>				
Date/Time From: 08/10/2015 0600	MON	Date/Time To: 08/10/2015 1800	MON			
<b>4. Operations Personnel</b>						
<b>DIVISION/GROUP SUPERVISOR</b>	JASON DANEN KRACHE (T)	<b>AIR OPERATIONS</b>	CHRIS INGRAM			
<b>5. Resources Assigned this Period</b>						
Strike Team / Task Force / Resource Designator	LWD	Leader	Number Persons	Drop Off PT./Time	Pick Up PT./Time	
CREW TYPE 2 MHR1		SMITH	19			
CREW TYPE 2 WNA 1		SHARP	20			
NEVADA TASK FORCE 3		VANDERSLICE	21			
DOZER HOLT			1			
HEAVY EQUIPMENT BOSS		SANTO				
SAFETY OFFICER		RAMEKERS				
LINE MEDIC		HORNACEK				
LINE EMT		KELLY				
<b>6. Control Operations/Work Assignments:</b>						
Maintain and improve existing line						
Mop-up 100' into the black						
<b>7. Special Instructions:</b>						
Maintain unburned fuel islands						
All vehicles to be weed washed prior to returning to home unit						
Any vehicle operating within the fire perimeter must be weed washed prior to going to the fire line						
Dodge Reservoir is available for fire suppression activities and road watering as deemed necessary by Operations						
<b>8. Division/Group Communication Summary</b>						
Function	Channel	RX Frequency N/W	RX Tone/NAC	TX Frequency N/W	TX Tone/NAC	Mode
TACTICAL	4	166.7250	156.7	166.7250	156.7	A
COMMAND	10	168.4750	0000	173.8125	156.7	A
COMMAND	11	168.4750	0000	168.4750	156.7	A
AIR TO GROUND	14	164.8375	0000	164.8375	0000	A
<b>9. Prepared By (Resource Unit Leader)</b>			<b>Approved By (Planning Section Chief)</b>		<b>Date</b>	<b>Time</b>
MAGENHEIMER					08/08/2015	1900

## Division/Group Assignment List (ICS 204 WF)

<b>1. Incident Name:</b>		<b>3.</b>	
R-1 DODGE		Branch:	Division/Group:
<b>2. Operational Period:</b>		<b>STAGING</b>	
DAY			
Date/Time From: 08/10/2015 0600      MON	Date/Time To: 08/10/2015 1800      MON		

4. Operations Personnel			
DIVISION/GROUP SUPERVISOR	LARSON	AIR OPERATIONS	INGRAM

5. Resources Assigned this Period					
Strike Team / Task Force / Resource Designator	LWD	Leader	Number Persons	Drop Off PT./Time	Pick Up PT./Time
WATER TENDER E 9		PHILLIPS	1		
WATER TENDER E 10		BRUNER	1		
WATER TENDER E 50					
DOZER BLM 2818			2		
DOZER BLM 2819					
DOZER BERRYESSA			1		
DOZER NOD2		MUPHRY	2		
HEAVY EQUIPMENT BOSS		SEANOR			
HEAVY EQUIPMENT BOSS		KOTTKE			

**6. Control Operations/Work Assignments:**  
 Develop contingent plan for local IA around the fire and deploy resources as such

**7. Special Instructions:**  
 All vehicles to be weed washed prior to returning to home unit

8. Division/Group Communication Summary						
Function	Channel	RX Frequency N/W	RX Tone/NAC	TX Frequency N/W	TX Tone/NAC	Mode
COMMAND	10	168.4750	0000	173.8125	156.7	A
<b>9. Prepared By (Resource Unit Leader)</b>		<b>Approved By (Planning Section Chief)</b>		<b>Date</b>	<b>Time</b>	
MAGENHEIMER				08/08/2015	1910	

## INCIDENT RADIO COMMUNICATIONS PLAN (ICS 205)

<b>1. Incident Name:</b> R-1 DODGE	<b>2. Date/Time Prepared:</b> Date: 08/09/2015 Time: 1900	<b>3. Operational Period:</b> DAY	<b>Date/Time From:</b> 08/10/2015 0600 <b>MON</b> <b>Date/Time To:</b> 08/10/2015 1800 <b>MON</b>
---------------------------------------	---	-----------------------------------	--

**4. Basic Radio Channel Use:**

Zone Group	Ch #	Function	Channel Name/Trunked Radio System Talkgroup	Assignment	RX Freq	RX Tone/NAC	TX Freq	TX Tone/NAC	Mode (A,D, or M)	Remarks
	1	TACTICAL	NIFC TAC 1	DIV A	168.0500	156.7	168.0500	156.7	A	
	2	TACTICAL	NIFC TAC 2	DIV M	168.2000	156.7	168.2000	156.7	A	
	3	TACTICAL	NIFC TAC 3	DIV Q	168.6000	156.7	168.6000	156.7	A	
	4	TACTICAL	NIFC TAC 4	DIV Y	166.7250	156.7	166.7250	156.7	A	
	5	TACTICAL	NIFC TAC 5	DIV T	166.7750	156.7	166.7750	156.7	A	
	6	TACTICAL	NIFC TAC 6	UNASSIGNED	168.2500	156.7	168.2500	156.7	A	
	7	TACTICAL	NIFC TAC 7	UNASSIGNED	166.6750	156.7	166.6750	156.7	A	
	8	TACTICAL	NIFC TAC 8	MEDICAL	154.2650	00000	154.2650	0000	A	
	9	TACTICAL	NIFC TAC 9	UNASSIGNED	169.2000	156.7	169.2000	156.7	A	
	10	COMMAND	NIFC COMMAND 6	COMMAND ALL	168.4750	0000	173.8125	156.7	A	
	11	COMMAND	NIFC CMD DIR	ALL DIVISIONS	168.4750	0000	168.4750	156.7	A	
	12	COMMAND	BLM RPT	COMMAND BACKUP	172.8125	0000	166.3125	167.9	A	
	13	COMMAND	NIFC COMMAND 8	ALL DIVISIONS	169.5375	0000	164.7125	156.7	A	
	14	AIR TO GROUND	AIR GROUND	ALL DIVISIONS	164.8375	0000	164.8375	0000	A	
	15	COMMAND	NIFC COMMAND 10	COMMAND ALL	170.4125	0000	165.9625	156.7	A	
	16	AIR GUARD	AIR GUARD	ALL DIVISIONS	168.6250	0000	168.6250	110.9	A	

**5. Special Instructions:**

<b>6. Prepared By</b> (Communications Unit Leader)	Name: DOWNING
Signature:	

ICS 205	IAP Page	Date/Time: 08/09/2015 1900
---------	----------	----------------------------



# SAFETY MESSAGE

## SAFETY IS OUR FIRST PRIORITY

*Fire fighter safety comes first on every fire, every time*

Incident: Dodge	Date: 08/10/15	Shift: Day
-----------------	----------------	------------

### SAFETY THOUGHTS

Head on collisions are the most violent type of vehicle accidents. Read the road ahead. Reduce speed. Drive to the right. Ride off the road if necessary.  
Slowdown in camp

### NO SLEEPING IN THE PARKING AREA AROUND VEHICLES

Today make sure you check on your buddies. Make sure you yourself are fully mentally in the game, and your partners to.

<u>Snag Safety</u>	
<b>S</b>	ize up snag hazards in work area.
<b>N</b>	ever become complacent.
<b>A</b>	lways look up.
<b>G</b>	et weather reports.
<b>S</b>	cout out parking, sleeping, work areas and safety zones.
<b>A</b>	dvise co-workers of known hazards.
<b>F</b>	ace your hazard and take appropriate actions.
<b>E</b>	xamine work area for other hazards.
<b>T</b>	ake extra caution around heavy equipment.
<b>Y</b>	ou are ultimately responsible for your own safety.

<b>Line Safety Officer</b>	<b>Safety Officer</b>
Hade, Femmel, Ramekers	Fraser

## Medical Plan (ICS 206 WF)

1. Incident/Project Name:		2. Operational Period:		DAY			
R-1 DODGE		Date/Time From: 08/10/2015 0600      MON		Date/Time To: 08/10/2015 1800      MON			
3. Ambulance Services							
Name	Complete Address	Phone & EMS Frequency	Advanced Life Support (ALS)				
			Yes	No			
SEMSA	SUSANVILLE, CA 96130	(530) 257-5575	X				
4. Air Ambulance Services							
Name	Phone	Type of Aircraft	Capability				
MOUNTAIN LIFEFLIGHT	(530) 257-5575	A STAR	1 PATIENT				
5. Hospitals							
Name Complete Address	GPS Datum - WGS 84 Coordinate Standard Degrees Decimal Minutes DD° MM.MMM' N - Lat DD° MM.MMM' W - Long	Travel Time		Phone	Helipad		Level of Care Facility
		Air	Ground		Yes	No	
BANNER LASSEN MEDICAL 1800 SPRING RIDGE DRIVE SUSANVILLE, CA 96130	Lat: 40 26.182N Long: 120 39.237W VHF:	25 MINUTES	120 MINUTES	(530) 252-2000	X		LEVEL 3 TRAUMA
RENOWN MEDICAL CENTER 1155 MILL STREET RENO, NV 89502	Lat: 39 31.280N Long: 119 47.440W VHF: TX:468.100 RX:463.100 PL TONE: 24	34 MINUTES	3.5 HOURS	(775) 982-4100	X		TRAUMA/STEMI/STROKE
UC DAVIS BURN CENTER 2315 STOCKTON BLVD SACRAMENTO, CA 95817	Lat: 38 33.160N Long: 119 27.270W VHF: TX: 155.30 RX: 155.30	75 INUTES	5.5 HOURS	(916) 734-3636	X		BURN CENTER
6. Area Location Capability							
Branch Division/Group							
8. Prepared By (Medical Unit Leader)		9. Date/Time		10. Reviewed By (Safety Officer)		11. Date/Time	
MICHAEL PORTER MEDL(T)		08/09/2015 2100		SCOTT FRASER SOFR		08/09/2015 2100	

## Medical Plan (ICS 206 WF)

<b>1. Incident/Project Name:</b>	<b>2. Operational Period:</b> <b>DAY</b>		
R-1 DODGE	Date/Time From: 08/10/2015 0600	MON	Date/Time To: 08/10/2015 1800

### 6. Area Location Capability

Branch Division/Group		
A	EMS Responders & Capability:	DARRIN WEBB FEMP, ANDREW LYMAN FEMP/EMT-PARAMEDIC
	Equipment Available on Scene:	EMT-PARAMEDIC
	Medical Emergency Channel:	TAC 8
	ETA for Ambulance to Scene:	
	Air:	30 MINUTES
	Ground:	120 MINUTES
	Approved Helispot:	
	Lat:	PER DIV SUP
	Long:	PER DIV SUP
M	EMS Responders & Capability:	CREW EMTS/EMT--BASIC
	Equipment Available on Scene:	EMT-BASIC
	Medical Emergency Channel:	TAC 8
	ETA for Ambulance to Scene:	
	Air:	30 MINUTES
	Ground:	120 MINUTES
	Approved Helispot:	
	Lat:	PER DIV SUP
	Long:	PER DIV SUP
Q	EMS Responders & Capability:	BRIAN KING FEMT, TAYLOR GARDNER FEMP/EMT-PARAMEDIC
	Equipment Available on Scene:	EMT-PARAMEDIC
	Medical Emergency Channel:	TAC 8
	ETA for Ambulance to Scene:	
	Air:	30 MINUTES
	Ground:	120 MINUTES
	Approved Helispot:	
	Lat:	PER DIV SUP
	Long:	PER DIV SUP

--	--	--

<b>8. Prepared By (Medical Unit Leader)</b>	<b>9. Date/Time</b>	<b>10. Reviewed By (Safety Officer)</b>	<b>11. Date/Time</b>
MICHAEL PORTER MEDL(T)	08/09/2015 2100	SCOTT FRASER SOFR	08/09/2015 2100

## Medical Plan (ICS 206 WF)

<b>1. Incident/Project Name:</b>		<b>2. Operational Period:</b> <b>DAY</b>	
R-1 DODGE		Date/Time From: 08/10/2015 0600      MON	Date/Time To: 08/10/2015 1800      MON
<b>6. Area Location Capability</b>			
<b>Branch Division/Group</b>			
T	EMS Responders & Capability:	CREW EMTS/EMT-BASIC	
	Equipment Available on Scene:	EMT-BASIC	
	Medical Emergency Channel:	TAC 8	
	ETA for Ambulance to Scene:		
	Air:	30 MINUTES	
	Ground:	120 MINUTES	
	Approved Helispot:		
	Lat:	PER DIV SUP	
	Long:	PER DIV SUP	
Y	EMS Responders & Capability:	SHAWN KELLY FEMT, MIKE HORNACEK FEMP/EMT-PARAMEDIC	
	Equipment Available on Scene:	EMT-PARAMEDIC	
	Medical Emergency Channel:	TAC 8	
	ETA for Ambulance to Scene:		
	Air:	30 MINUTES	
	Ground:	120M INUTES	
	Approved Helispot:		
	Lat:	PER DIV SUP	
	Long:	PER DIV SUP	
DODGE HELIBASE	EMS Responders & Capability:	AMBULANCE 174/ALS CAPABILITY	
	Equipment Available on Scene:	ALS	
	Medical Emergency Channel:	TAC 8	
	ETA for Ambulance to Scene:		
	Air:	20 MINUTES	
	Ground:	60 MINUTES	
	Approved Helispot:		
	Lat:		
	Long:		
<b>7. Remote Camp Location(s)</b>			
<b>Name &amp; Location</b>			
<b>8. Prepared By (Medical Unit Leader)</b>	<b>9. Date/Time</b>	<b>10. Reviewed By (Safety Officer)</b>	<b>11. Date/Time</b>
MICHAEL PORTER MEDL(T)	08/09/2015 2100	SCOTT FRASER SOFR	08/09/2015 2100



## Medical Plan (ICS 206 WF)

<b>1. Incident/Project Name:</b>		<b>2. Operational Period:</b> DAY	
R-1 DODGE		Date/Time From: 08/10/2015 0600 MON	Date/Time To: 08/10/2015 1800 MON
<b>7. Remote Camp Location(s)</b>			
<b>Name &amp; Location</b>			
	Point Of Contact:		
	EMS Responders & Capability		
	Equipment Available on Scene:		
	Medical Emergency Channel:		
	ETA for Ambulance To Scene:		
	Air:		
	Ground:		
	Approved Helispot:		
	Lat:		
	Long:		
<b>8. Prepared By (Medical Unit Leader)</b>	<b>9. Date/Time</b>	<b>10. Reviewed By (Safety Officer)</b>	<b>11. Date/Time</b>
MICHAEL PORTER MEDL(T)	08/09/2015 2100	SCOTT FRASER SOFR	08/09/2015 2100

# MEDICAL PLAN (ICS 206)

## 12. Medical Incident Procedures

**FOR ALL MEDICAL EMERGENCIES: IDENTIFY ON SCENE INCIDENT COMMANDER BY NAME AND POSITION AND ANNOUNCE "MEDICAL EMERGENCY" TO INITIATE RESPONSE FROM IMT COMMUNICATIONS/DISPATCH.**

### Medical Incident Report

Use items one through nine to communicate situation to communications/dispatch.

**1. CONTACT COMMUNICATIONS/DISPATCH**

Ex: "Communications: Div. Alpha. Stand-by for Priority Medical Incident Report." (If life threatening, request designated frequency be cleared for emergency traffic.)

**2. INCIDENT STATUS: Provide incident summary and command structure.**

Nature of Injury/Illness		Describe the injury (Ex: Broken leg with bleeding)
Incident Name		Geographic Name + "Medical" (Ex: Trout Meadow Medical)
Incident Commander		Name of IC
Patient Care		Name of Care Provider (Ex: EMT Smith)

**3. INITIAL PATIENT ASSESSMENT:**

Complete this section for each patient. This is only a brief, initial assessment. Provide additional patient info after completing this 9 Line Report.

Number of Patients:	Male / Female	Age:	Weight:
Conscious?	<input type="checkbox"/> YES	<input type="checkbox"/> NO = MEDEVAC!	
Breathing?	<input type="checkbox"/> YES	<input type="checkbox"/> NO = MEDEVAC!	
Mechanism of Injury: What caused the injury?			
Lat/Long (Datum WG884) Ex: N 40° 42.45' x W 123° 03.24'			

**4. SEVERITY OF EMERGENCY, TRANSPORT PRIORITY**

SEVERITY	TRANSPORT PRIORITY
<input type="checkbox"/> <b>URGENT-RED</b> Life threatening injury or illness. Ex: Unconscious, difficulty breathing, bleeding severely, 2 - 3 degree burns more than 4 palm sizes, heat stroke, disoriented.	Ambulance or MEDEVAC helicopter. Evacuation need is <b>IMMEDIATE</b> .
<input type="checkbox"/> <b>PRIORITY-YELLOW</b> Serious Injury or illness. Ex: Significant trauma, not able to walk, 2 - 3 degree burns not more than 1-2 palm sizes.	Ambulance or consider air transport if at remote location. Evacuation may be <b>DELAYED</b> .
<input type="checkbox"/> <b>ROUTINE-GREEN</b> Not a life threatening injury or illness. Ex: Sprains, strains, minor heat-related illness.	Non-Emergency. Evacuation considered <b>Routine of Convenience</b> .

**5. TRANSPORT PLAN:**

<b>Air Transport:</b> (Agency Aircraft Preferred)			
<input type="checkbox"/> Helispot	<input type="checkbox"/> Short-haul/Hoist	<input type="checkbox"/> Life Flight	<input type="checkbox"/> Other
<b>Ground Transport:</b>			
<input type="checkbox"/> Self-Extract	<input type="checkbox"/> Carry-Out	<input type="checkbox"/> Ambulance	<input type="checkbox"/> Other

**6. ADDITIONAL RESOURCE/EQUIPMENT NEEDS:**

<input type="checkbox"/> Paramedic/EMT(s)	<input type="checkbox"/> Crew(s)	<input type="checkbox"/> SKED/Backboard/C-Collar
<input type="checkbox"/> Burn Sheet(s)	<input type="checkbox"/> Oxygen	<input type="checkbox"/> Trauma Bag
<input type="checkbox"/> Medication(s)	<input type="checkbox"/> IV/Fluid(s)	<input type="checkbox"/> Cardiac Monitor/AED
<input type="checkbox"/> Other (i.e. splints, rope rescue, wheeled litter)		

**7. COMMUNICATIONS:**

Function	Channel Name/Number	Receive (Rx)	Tone/NAC *	Transmit (Tx)	Tone/NAC *
Ex: Command	Forest Rpt, Ch. 2	168.3250	110.9	171.4325	110.9
COMMAND					
AIR-TO-GRND					
TACTICAL					

\*(NAC for digital radio system)

**8. EVACUATION LOCATION:**

Lat/Long (Datum WG884) EX: N 40 42.45' x W 123 03.24'	
Patient's ETA to Evacuation Location:	
Helispot/Extraction Size and Hazards:	

**9. CONTINGENCY:**

Considerations: If primary options fail, what actions can be implemented in conjunction with primary evacuation method? Be thinking ahead...

**REMEMBER:**

- Confirm ETA's of resources ordered
- Act according to your level of training
- Be Alert. Keep Calm. Think Clearly. Act Decisively.

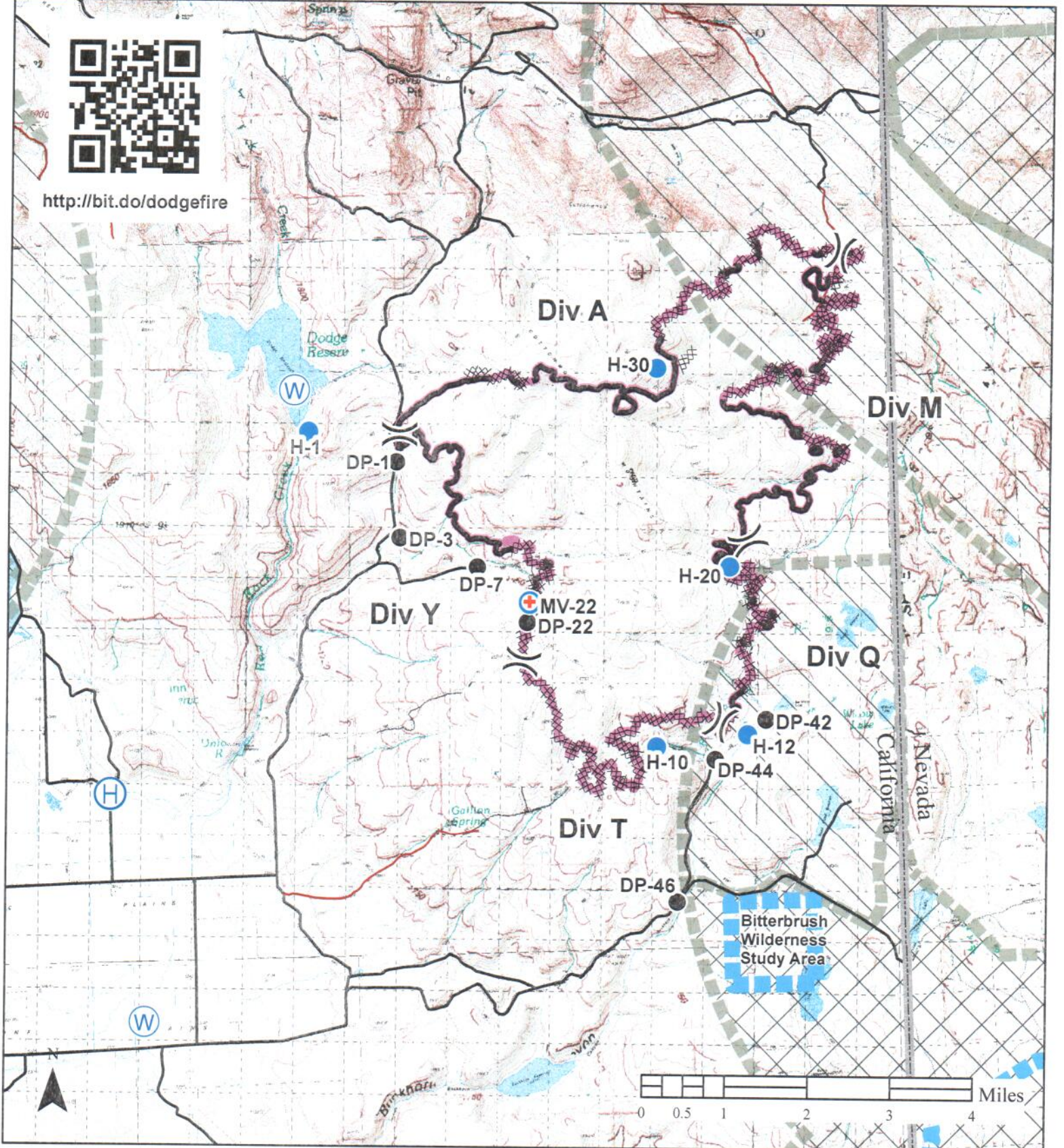
# AIR OPERATIONS SUMMARY (ICS 220)

1. Incident Name:		2. Operational Period: DAY		3. Sunrise:	Sunset:
R-1 DODGE		Date/Time From: 08/10/2015 0600	MON	0608	2007
<b>4. Remarks</b> (Safety Notes, Hazards, Air Op Special Equipment, etc.) Hazard: Military aircraft operating unannounced Herlong Military Base: C-130, C-5, C-17(s)  VLAT and C-130 MAFFS being used.  Hazard: I MET Tower (Windmill) Lat: Degrees 40 57 57.82N Long: Degrees 120 03 53.01W		<b>5. Ready Alert Aircraft:</b> Medivac: HELICOPTER 3AE New Incident:		<b>6. Temporary Flight Restriction Number:</b> Altitude: FR SURFACE UP TO AND INCLUDING 10000 Center Point: LAT: DEG 40 57'.06"N, LONG: DEG 120 03'26"W	
<b>7. Personnel:</b>		<b>8. Frequencies:</b>		<b>9. Fixed-Wing</b> (category/kind/type, make/model, N#, base):	
Name:	Phone Number:	Air/Air Fixed-Wing	AM (Tone)	FM (Tone)	Air Tactical Group Supervisor Aircraft:
CHRIS INGRAM	(775) 240-2289	Air/Air Rotary-Wing - Flight Following	135.025 000.0	169.8250	AA-06 AERO COMMANDER, CHESTER AIRBASE
AIR SUPPORT GROUP SUPERVISOR		Air/Ground		164.8375 000.0	TAIL # 1LW
AIR TACTICAL GROUP SUPERVISOR	(530) 604-2861	nifc Command 6		168.4750 156.7	
HELICOPTER COORDINATOR		Deck Coordinator			
HELIBASE MANAGER	(702) 556-2255	Take-Off & Landing Coordinator			
		Air Guard		168.625 110.9	<b>Other Fixed-Wing Aircraft:</b>
					TANKERS AVAILABLE BY REQUEST - CHESTER
<b>11. Prepared by: Name:</b> CHRIS INGRAM		<b>Position/Title:</b> SFIMT RASNER AOBD		<b>Signature:</b>	
<b>ICS 220, Page 1 of 2</b>		<b>Date/Time:</b> 08/09/2015 1800			





<http://bit.do/dodgefire>

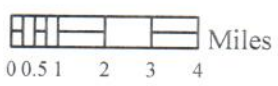
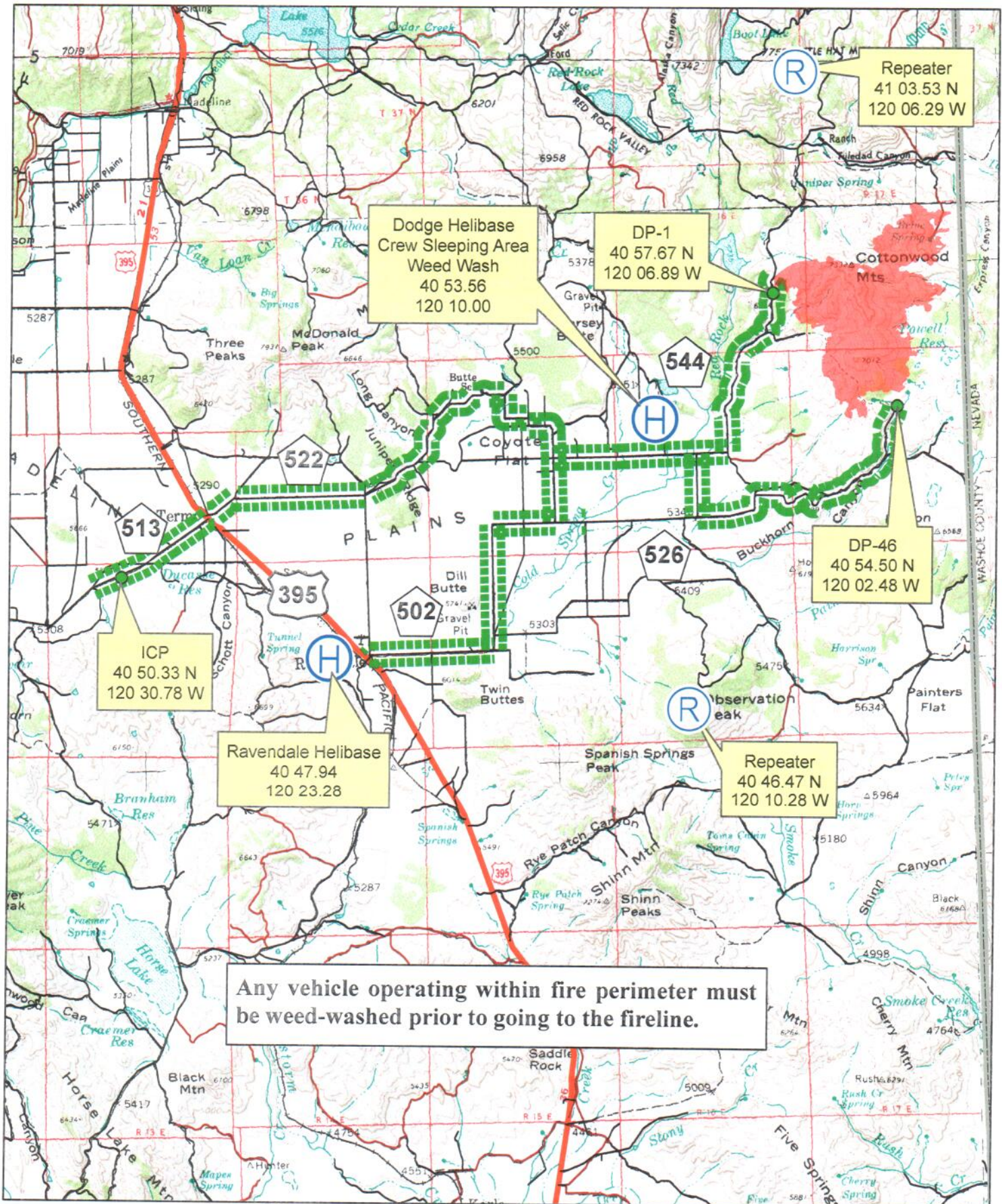


**Dodge Fire**  
**IAP Map**  
CA-NOD-003806  
8/10/2015  
10,570 ac



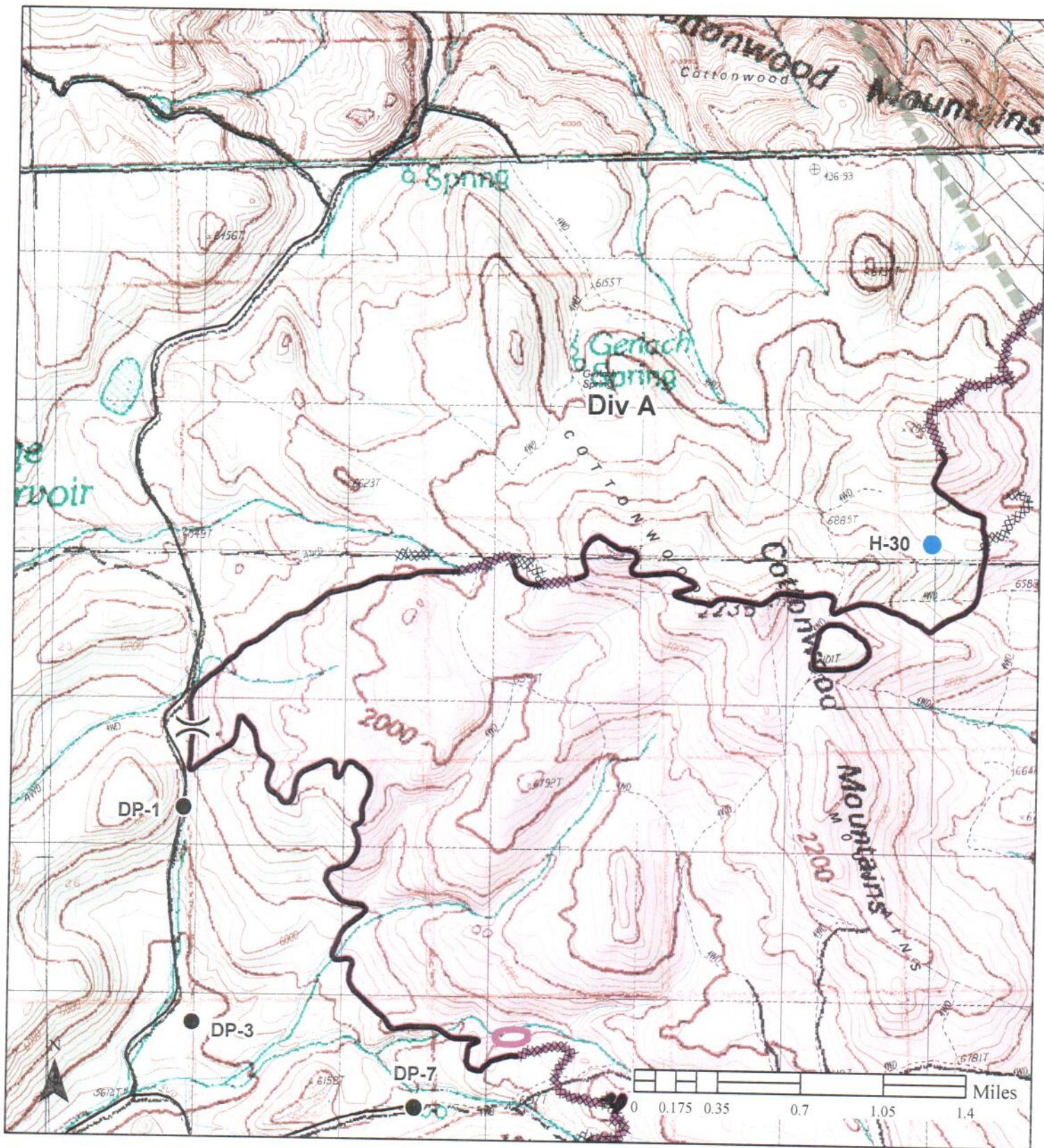
**Legend**

- Uncontrolled Fire Edge
- Completed Dozer Line
- Completed Line
- Drop Point
- Helispot
- Water Source
- FIAT Suppression Priorities**
- High
- Moderate



**Dodge Fire Transport Map**  
CA-NOD-003806 8/10/2015





**Dodge Fire**  
**IAP Map**  
 CA-NOD-003806  
 8/10/2015  
 10,570 ac



Nate Rasner  
 Sierra Front IMT



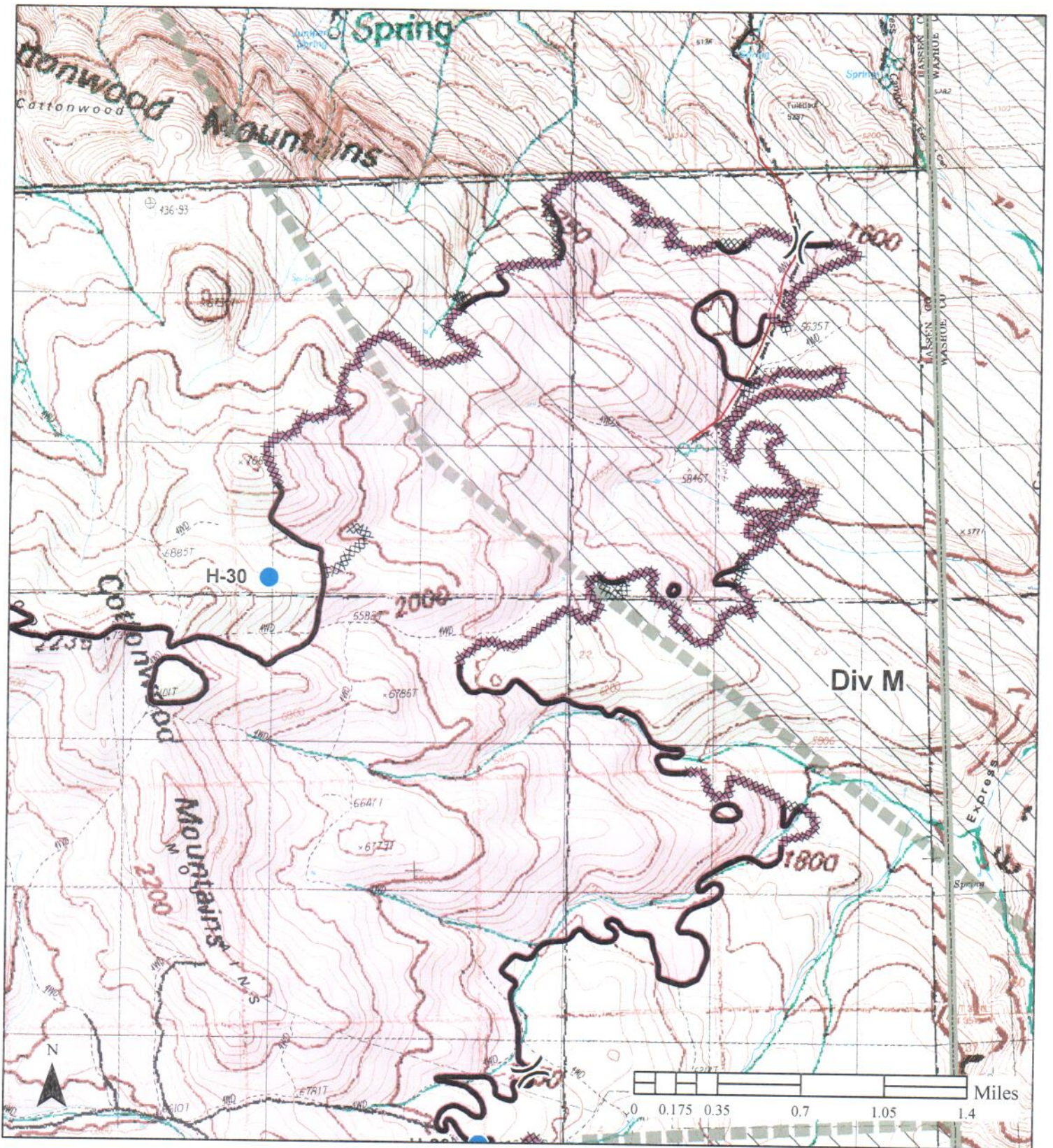
- Uncontrolled Fire Edge
- Completed Dozer Line
- Completed Line
- Drop Point

**Legend**

- Helispot
- Water Source

**FIAT Suppression Priorities**

- High
- Moderate



**Dodge Fire**  
**IAP Map**  
 CA-NOD-003806  
 8/10/2015  
 10,570 ac



Nate Rasner  
 Sierra Front IMT

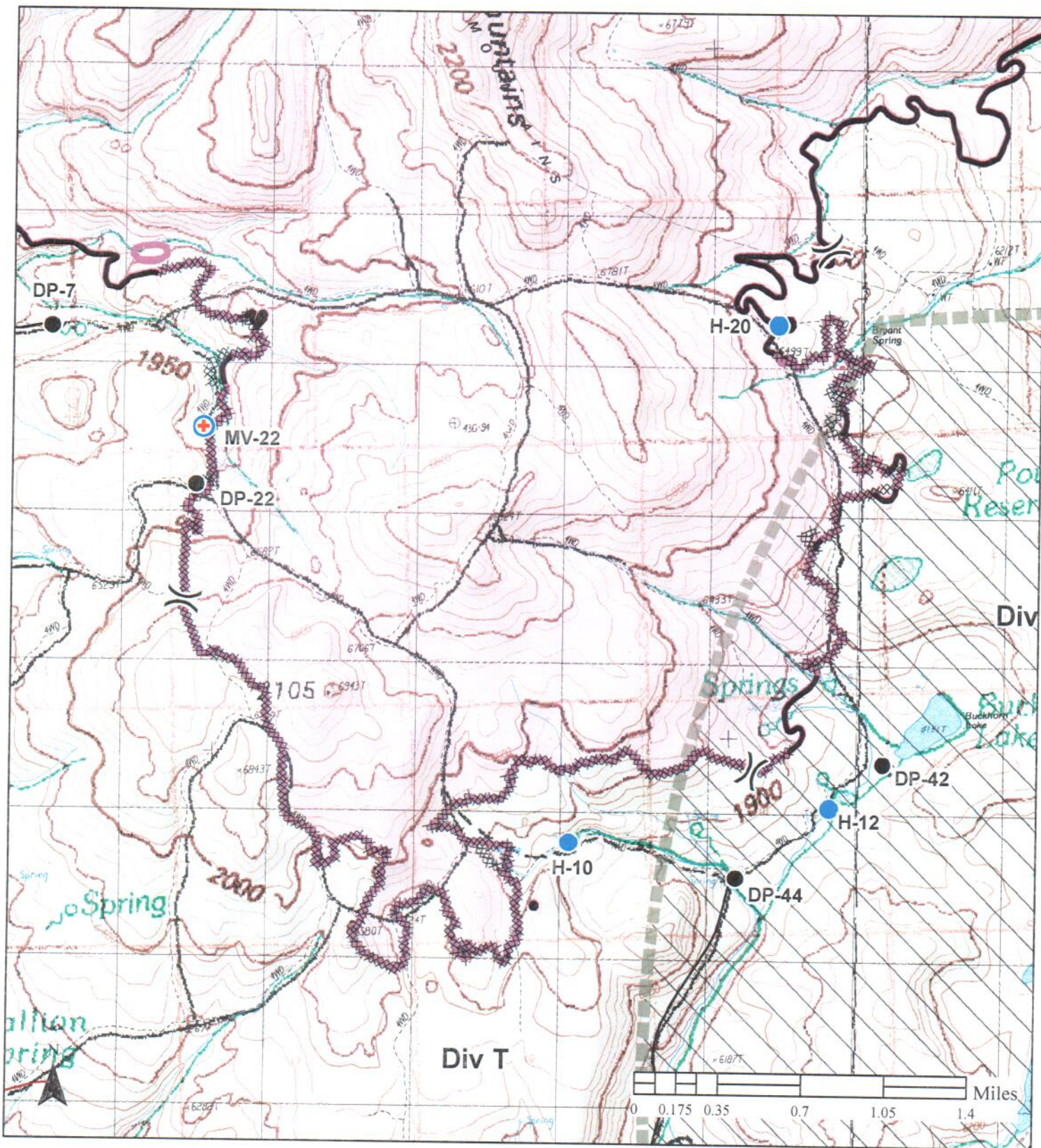


- Uncontrolled Fire Edge
- Completed Dozer Line
- Completed Line
- Drop Point

**Legend**

- Helispot
- Water Source
- FIAT Suppression Priorities**
- High
- Moderate





**Dodge Fire**  
**IAP Map**  
 CA-NOD-003806  
 8/10/2015  
 10,570 ac



Nate Rasner  
 Sierra Front IMT



- Uncontrolled Fire Edge
- Completed Dozer Line
- Completed Line
- Drop Point

**Legend**

- Helispot
- Water Source

- FIAT Suppression Priorities**
- High
  - Moderate