



Dodge Fire



Incident Action Plan

August 11, 2015


Day Operations

Dodge
CA-NOD-003806
J0SD

INCIDENT OBJECTIVES (ICS 202)

1. Incident Name:		2. Operational Period: DAY	
R-1 DODGE		Date/Time From: 08/11/2015 0600 TUE	Date/Time To: 08/11/2015 1800 TUE
3. Objective(s):			
<p>Firefighter and public safety will be the number one concern in all fire management activities</p> <p>-Assure that safety of firefighter, aviation, support personnel, and the public is the highest priority at all times for the duration of the incident</p> <p>Protect all structures, private lands and values at risk without compromising firefighter and public safety.</p> <p>Utilize resources cost-effectively</p> <p>Protect all sage grouse habitat ,cultural resources, wilderness study areas and recreation areas.</p>			
4. Operational Period Command Emphasis:			
Keep the Fire within current containment lines			
General Situational Awareness:			
Fire behavior has moderated due to containment efforts and recent weather. No further fire growth is expected.			
5. Site Safety Plan Required? Yes <input type="checkbox"/> No <input checked="" type="checkbox"/>			
Approved Site Safety Plan(s) Located at:			
6. Incident Action Plan (the items checked below are included in this Incident Action Plan):			
<input checked="" type="checkbox"/> ICS 202	<input type="checkbox"/> ICS 207	Other Attachments: <input type="checkbox"/> _____ <input type="checkbox"/> _____ <input type="checkbox"/> _____ <input type="checkbox"/> _____	
<input checked="" type="checkbox"/> ICS 203	<input type="checkbox"/> ICS 208		
<input checked="" type="checkbox"/> ICS 204	<input checked="" type="checkbox"/> ICS 220		
<input checked="" type="checkbox"/> ICS 205	<input checked="" type="checkbox"/> Map/Chart		
<input type="checkbox"/> ICS 205A	<input checked="" type="checkbox"/> Weather Forecast/Tides/Currents		
<input type="checkbox"/> ICS 206			
7. Prepared by: MAGENHEIMER		Position/Title: PSC3	Signature: 
8. Approved by Incident Commander:		Name: <i>Wate Rasner</i>	Signature: 
ICS 202		IAP Page	Date/Time: 08/09/2015 1730

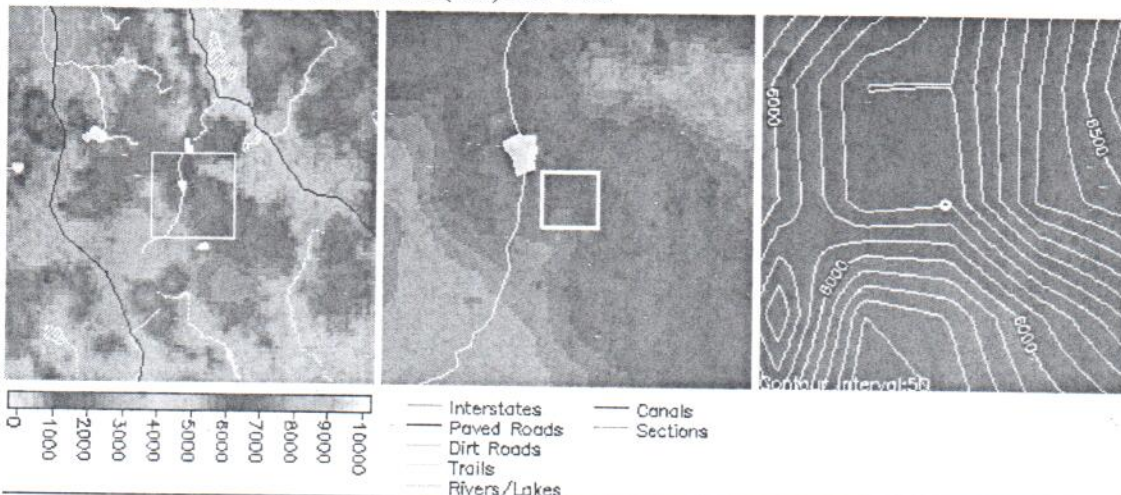
ORGANIZATION ASSIGNMENT LIST (ICS 203)

1. Incident Name:		2. Operational Period: DAY	
R-1 DODGE		Date/Time From: 08/11/2015 0600 TUE	Date/Time To: 08/11/2015 1800 TUE
3. Incident Commander(s) and Command Staff:		LOGISTICS	
IC	NATE RASNER MARK WINKLEMAN (T)	7. Operations Section:	
IC	LUIS GOMEZ (T)	DAY OPS SECTION CHIEF	MIKE HEIKKA
SAFETY OFFICER	SCOTT FRASER	PLANNING OPS	RYAN SOMMERS
INFORMATION OFFICER	BETH KENNA MARK REGAN	OPS SECTION CHIEF	
LIAISON OFFICER		DEPUTY OPS SECTION CHIEF	
4. Agency/Organization Representative(s):		STAGING AREA	
Agency/Organization	Name	7b. Air Operations Branch:	
DISTRICT MANAGER	NANCY HAUG	AIR OPS BRANCH DIRECTOR	CHRIS INGRAM
BLM AREA REP	EMILY RYAN	AIR ATTACK SUPERVISOR	
BLM AREA REP	DENNIS SYLVIA	AIR SUPPORT SUPERVISOR	
DFMO NORCAL DISTRICT	WALTER HERZOG	HELICOPTER COORDINATOR	
5. Planning Section:		AIR TANKER COORDINATOR	
CHIEF	CHRIS MAGENHEIMER	8. Finance/Administration Section:	
DEPUTY		CHIEF	BONNIE KENNEDY
RESOURCES UNIT	TERRE PEARSON RAMIREZ	EQUIPMENT COSTS	DONNA COONEY
SITUATION UNIT		TIME UNIT	ZANDRA ZAVALZA
DOCUMENTATION UNIT			
DEMOBILIZATION UNIT			
FIRE BEHAVIOR ANALYST			
HUMAN RESOURCE SPECIALIST			
TRAINING SPECIALIST			
GIS SPECIALIST	FOREST SCHAFFER		
COMPUTER SPECIALIST			
INCIDENT METEOROLOGIST			
6. Logistics Section:			
CHIEF	JUSTIN LANGFORD EMILY LUTZ		
CHIEF	BOBBY WILLIS (T)		
SUPPLY UNIT			
FACILITIES UNIT			
GROUND SUPPORT UNIT			
COMMUNICATIONS UNIT	RANDY WILLIAMS MARK DOWNING (T)		
MEDICAL UNIT	ANTHONY GASPORRA MIKE PORTER (T)		
SECURITY UNIT			
FOOD UNIT	DILLE, LOYD C		
9. Prepared By:	Name: MAGENHEIMER	Position/Title: PSC 3	Signature: 
ICS 203	IAP Page	Date/Time: 08/07/2015 1815	

Dodge (WILDFIRE) (Requested: 2155 PDT 8/10/15)

Forecast complete at 2223 PDT 8/10/15

Requested by: Sierra Front IMT Phone:(702) 979-1765



Location: Legal: Lat/Lon:40 57 29/120 6 32 Quad:
 Calculated:(40°57'29"N 120°6'32"W) (BUCKHORN LAKE CA)
 Elevation:6100-7300 Drainage:unknown Aspect:South Size:unknown
 Fuel Type:sage/ juniper (Partially Sheltered)

Observations:

Place Elev Time Wind Temp Wetbulb RH Dewpt Remarks

Requested Parameters

Remarks

... Clouds / Weather Can I please have this completed
 ... Temperature by 2230
 ... Relative Humidity Thanks Chris
 ... 20 Foot Wind
 ... Smoke Dispersion

FORECAST:

IF CONDITIONS BECOME UNREPRESENTATIVE,
 CONTACT THE NATIONAL WEATHER SERVICE.

IF CONDITIONS BECOME UNREPRESENTATIVE,
 CONTACT THE NATIONAL WEATHER SERVICE.

DISCUSSION...BREEZY SOUTH TO SOUTHWEST AFTERNOON WINDS AND DRY
 CONDITIONS WILL BE ON TAP FOR THE NEXT COUPLE DAYS. MODERATE HUMIDITY
 RECOVERIES EXPECTED OVERNIGHT. THERE WILL BE NO PRECIPITATION OR
 THUNDERSTORMS. STRONGER WINDS AND DRY CONDITIONS ARE EXPECTED
 THURSDAY AFTERNOON WITH POSSIBLE RED FLAG CONDITIONS.

FOR TODAY

WEATHER.....PARTLY CLOUDY
 TEMPERATURE.....MAX 78-81.
 HUMIDITY.....MIN 16-19%.
 WIND...20 FOOT....SOUTH SOUTHWEST 5-10 MPH INCREASING TO 10 TO
 15 MPH WITH GUSTS TO 30 MPH IN THE
 AFTERNOON.
 LAL.....1
 CWR.....0%

FOR TONIGHT

WEATHER.....MOSTLY CLEAR
 TEMPERATURE.....MIN 50-53.

HUMIDITY.....MAX 37-40%
 WIND...20 FOOT.....WEST AROUND 8-12 MPH WITH GUSTS TO 25 MPH IN
 THE EVENING BECOMING DOWNSLOPE 2-5 MPH
 BY MIDNIGHT.
 LAL.....1
 CWR.....0%

OUTLOOK FOR TUESDAY

WEATHER.....SUNNY.
 TEMPERATURE.....MAX 80-83
 HUMIDITY.....MIN 10-14%
 WIND...20 FOOT.....SOUTH SOUTHWEST 5-10 MPH INCREASING TO 10 TO
 15 MPH WITH GUSTS TO 28 MPH IN THE
 AFTERNOON.
 LAL.....1
 CWR.....0%

FORECASTER...FUENTES

*FORECASTER NOTE: I PUT A LIST OF ASSUMED FORECAST ELEMENTS FOR THE
 FIRE IN THIS SPOT FORECAST. BE SURE TO SELECT WHICH ELEMENTS YOU
 REQUIRE FOR THE INCIDENT. IF THERE IS ANYTHING ELSE YOU NEED LET US
 KNOW AND WE CAN UPDATE THE FORECAST. IF SURFACE WEATHER OBSERVATIONS
 ARE AVAILABLE FROM THE INCIDENT SITE, PLEASE SUBMIT WITH THE SPOT
 REQUEST AS THEY HELP FORECAST QUALITY GREATLY. THANKS MUCH.

Please provide feedback:

[Printer Friendly Version of Forecast](#)

[Back to Spot List](#)
[Copy Info to New Spot Request](#)

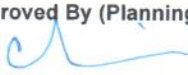


National Oceanic and Atmospheric Administration (NOAA)


[Privacy Policy](#)

National Weather Service
 Fire & Public Weather Services Branch
 Page Author: NWS Internet Services Team
 Page last updated at 5:57 am PST 3/5/07


Division/Group Assignment List (ICS 204 WF)

1. Incident Name:			3.			
R-1 DODGE			Branch:		Division/Group: DIVISION A	
2. Operational Period: DAY						
Date/Time From: 08/11/2015 0600 TUE		Date/Time To: 08/11/2015 1800 TUE				
4. Operations Personnel						
DIVISION/GROUP SUPERVISOR		DIXON, SHANE LARSON		AIR OPERATIONS		CHRIS INGRAM
5. Resources Assigned this Period						
Strike Team / Task Force / Resource Designator		LWD	Leader	Number Persons	Drop Off PT./Time	Pick Up PT./Time
TYPE 3 FIRESTORM E 9907			PEARCE	3		
TYPE 3 ENGINE 5274			MORGAN	3		
ENGINE TYPE 4 E 2413			PEREZ	6		
TYPE 6 E 5670			LOONEY	3		
LINE MEDIC			WEBB			
LINE MEDIC			LYMAN			
6. Control Operations/Work Assignments:						
Hold and improve existing line.						
Mop-up 300 feet into black						
7. Special Instructions:						
Maintain unburned fuel islands						
All vehicles to be weed washed prior to returning to home unit						
Any vehicle operating within the fire perimeter must be weed washed prior to going to the fire line						
Dodge Reservoir is available for fire suppression activities and road watering as deemed necessary by Operations						
8. Division/Group Communication Summary						
Function	Channel	RX Frequency N/W	RX Tone/NAC	TX Frequency N/W	TX Tone/NAC	Mode
TACTICAL	1	168.0500	156.7	168.0500	156.7	A
COMMAND	10	168.4750	0000	173.8125	156.7	A
COMMAND	11	168.4750	0000	168.4750	156.7	A
AIR TO GROUND	14	164.8375	0000	164.8375	0000	A
9. Prepared By (Resource Unit Leader)			Approved By (Planning Section Chief)		Date	Time
MAGENHEIMER					08/10/2015	1820

Division/Group Assignment List (ICS 204 WF)

1. Incident Name:			3.			
R-1 DODGE			Branch:		Division/Group: DIVISION M	
2. Operational Period: DAY						
Date/Time From: 08/11/2015 0600 TUE		Date/Time To: 08/11/2015 1800 TUE				
4. Operations Personnel						
DIVISION/GROUP SUPERVISOR		VAN ORMER, TYLER JOHNSON		AIR OPERATIONS		CHRIS INGRAM
5. Resources Assigned this Period						
Strike Team / Task Force / Resource Designator		LWD	Leader	Number Persons	Drop Off PT./Time	Pick Up PT./Time
CREW TYPE 2 HVP 60			FOSTER	20		
HELITACK LAS VEGAS			RHEA	8		
CREW TYPE 2 COOPER CONTRACTING			PETERSON	19		
ENGINE TYPE 6 FIRESTORM 9910			LUDLOW	3		
TYPE 6 ENGINE SIERRA 9			ROWSEY	3		
SAFETY OFFICER			HADE			
6. Control Operations/Work Assignments:						
Maintain and improve existing line.						
Mop-up 300' into black..						
7. Special Instructions:						
Fly crew HVP 60 to H 24. Crew to be at Helibase by 0800 for flight						
Maintain unburned fuel islands.						
All vehicles to be weed washed prior to returning to home unit						
Any vehicle operating within the fire perimeter must be weed washed prior to going to the fire line						
Dodge Reservoir is available for fire suppression activities and road watering as deemed necessary by Operations						
8. Division/Group Communication Summary						
Function	Channel	RX Frequency N/W	RX Tone/NAC	TX Frequency N/W	TX Tone/NAC	Mode
TACTICAL	2	168.2000	156.7	168.2000	156.7	A
COMMAND	10	168.4750	0000	173.8125	156.7	A
COMMAND	11	168.4750	0000	168.4750	156.7	A
AIR TO GROUND	14	164.8375	0000	164.8375	0000	A
9. Prepared By (Resource Unit Leader)			Approved By (Planning Section Chief)		Date	Time
MAGENHEIMER					08/10/2015	1845

Division/Group Assignment List (ICS 204 WF)

1. Incident Name:			3.			
R-1 DODGE			Branch:		Division/Group: DIVISION Q	
2. Operational Period: DAY						
Date/Time From: 08/11/2015 0600 TUE		Date/Time To: 08/11/2015 1800 TUE				
4. Operations Personnel						
DIVISION/GROUP SUPERVISOR		DUNING, ERIC JAY GANNON, JAMES		AIR OPERATIONS		CHRIS INGRAM
5. Resources Assigned this Period						
Strike Team / Task Force / Resource Designator		LWD	Leader	Number Persons	Drop Off PT./Time	Pick Up PT./Time
TYPE 2 CREW ACOMA			VALLO	20		
SAFETY OFFICER			FEMMEL	1		
LINE EMT			KING			
LINE MEDIC			GARDNER			
6. Control Operations/Work Assignments:						
Hold and improve existing line						
Mop-up 300' into the black						
7. Special Instructions:						
Fly Acoma Crew to drop-point H-12. Crew to be at Helibase by 0830						
Maintain unburned fuel islands.						
All vehicles to be weed washed prior to returning to home unit						
Any vehicle operating within the fire perimeter must be weed washed prior to going to the fire line						
Dodge Reservoir is available for fire suppression activities and road watering as deemed necessary by Operations						
8. Division/Group Communication Summary						
Function	Channel	RX Frequency N/W	RX Tone/NAC	TX Frequency N/W	TX Tone/NAC	Mode
TACTICAL	3	168.6000	156.7	168.6000	156.7	A
COMMAND	10	168.4750	0000	173.8125	156.7	A
COMMAND	11	168.4750	0000	168.4750	156.7	A
AIR TO GROUND	14	164.8375	0000	164.8375	0000	A
9. Prepared By (Resource Unit Leader)			Approved By (Planning Section Chief)		Date	Time
MAGENHEIMER					08/10/2015	1915

Division/Group Assignment List (ICS 204 WF)

1. Incident Name: R-1 DODGE		3.	
		Branch:	Division/Group: DIVISION T
2. Operational Period: DAY			
Date/Time From: 08/11/2015 0600	TUE	Date/Time To: 08/11/2015 1800	TUE

4. Operations Personnel		
DIVISION/GROUP SUPERVISOR HAMRICK, GRANT D GREYSHIELD (T)	AIR OPERATIONS	CHRIS INGRAM

5. Resources Assigned this Period					
Strike Team / Task Force / Resource Designator	LWD	Leader	Number Persons	Drop Off PT./Time	Pick Up PT./Time
CREW TYPE 2 SACRAMENTO		CRITTENDER	20		
ENGINE TYPE 6 BLM E76		GENAO	4		
TYPE 2 CREW RUBICON		VIZCAINO	20		
E 5273		COOPER	3		
UTV					
SAFETY OFFICER		MOLVE			


6. Control Operations/Work Assignments:
 Hold and improve existing line.
 Mop-up 300 feet into black

7. Special Instructions:
 Maintain unburned fuel islands
 All vehicles to be weed washed prior to returning to home unit
 Any vehicle operating within the fire perimeter must be weed washed prior to going to the fire line
 Dodge Reservoir is available for fire suppression activities and road watering as deemed necessary by Operations


8. Division/Group Communication Summary						
Function	Channel	RX Frequency N/W	RX Tone/NAC	TX Frequency N/W	TX Tone/NAC	Mode
TACTICAL	5	166.7750	156.7	166.7750	156.7	A
COMMAND	10	168.4750	0000	173.8125	156.7	A
COMMAND	11	168.4750	0000	168.4750	156.7	A
AIR TO GROUND	14	164.8375	0000	164.8375	0000	A

9. Prepared By (Resource Unit Leader) MAGENHEIMER	Approved By (Planning Section Chief) 	Date 08/10/2015	Time 1850
---	---	---------------------------	---------------------

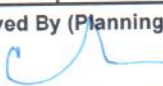
Division/Group Assignment List (ICS 204 WF)

1. Incident Name:			3.			
R-1 DODGE			Branch:		Division/Group: DIVISION Y	
2. Operational Period: DAY						
Date/Time From: 08/11/2015 0600 TUE		Date/Time To: 08/11/2015 1800 TUE				
4. Operations Personnel						
DIVISION/GROUP SUPERVISOR		JASON DANEN KRACHE (T)		AIR OPERATIONS		CHRIS INGRAM
5. Resources Assigned this Period						
Strike Team / Task Force / Resource Designator		LWD	Leader	Number Persons	Drop Off PT./Time	Pick Up PT./Time
CREW TYPE 2IA MHR1			SMITH	19		
CREW TYPE 2 WNA 1			SHARP	20		
NEVADA TASK FORCE 3			VANDERSLICE	21		
DOZER HOLT			SIMPSON	1		
HEAVY EQUIPMENT BOSS			SANTO			
SAFETY OFFICER			RAMEKERS			
LINE MEDIC			HORNACEK			
LINE EMT			KELLY			
6. Control Operations/Work Assignments:						
Maintain and improve existing line						
Mop-up 300' into the black						
7. Special Instructions:						
Maintain unburned fuel islands						
All vehicles to be weed washed prior to returning to home unit						
Any vehicle operating within the fire perimeter must be weed washed prior to going to the fire line						
Dodge Reservoir is available for fire suppression activities and road watering as deemed necessary by Operations						
8. Division/Group Communication Summary						
Function	Channel	RX Frequency N/W	RX Tone/NAC	TX Frequency N/W	TX Tone/NAC	Mode
TACTICAL	4	166.7250	156.7	166.7250	156.7	A
COMMAND	10	168.4750	0000	173.8125	156.7	A
COMMAND	11	168.4750	0000	168.4750	156.7	A
AIR TO GROUND	14	164.8375	0000	164.8375	0000	A
9. Prepared By (Resource Unit Leader)			Approved By (Planning Section Chief)		Date	Time
MAGENHEIMER					08/10/2015	1900


Division/Group Assignment List (ICS 204 WF)

1. Incident Name:		3.				
R-1 DODGE		Branch:		Division/Group: HELIBASE		
2. Operational Period: DAY						
Date/Time From: 08/11/2015 0600 TUE	Date/Time To: 08/11/2015 1800 TUE					
4. Operations Personnel						
AIR OPERATIONS SUPERVISOR	CHRIS INGRAM	OPERATIONS CHIEF				
BRANCH DIRECTOR		DIVISION/GROUP SUPERVISOR				
AIR ATTACK SUPERVISOR						
5. Resources Assigned this Period						
Strike Team / Task Force / Resource Designator	LWD	Leader	Number Persons	Drop Off PT./Time	Pick Up PT./Time	
WATER TENDER E 50		JEWELL	1			
WATER TENDER E 59		HALE				
6. Control Operations/Work Assignments:						
Support helibase as needed						
Track and report water usage						
7. Special Instructions:						
8. Division/Group Communication Summary						
Function	Channel	RX Frequency N/W	RX Tone/NAC	TX Frequency N/W	TX Tone/NAC	Mode
COMMAND						
TACTICAL						
LOGISTICS						
AIR TO GROUND						
9. Prepared By (Resource Unit Leader)		Approved By (Planning Section Chief)		Date	Time	
MAGENHEIMER				08/10/2015	1145	

Division/Group Assignment List (ICS 204 WF)

1. Incident Name:		3.				
R-1 DODGE		Branch:	Division/Group:			
2. Operational Period: DAY		STAGING				
Date/Time From: 08/11/2015 0600	TUE	Date/Time To: 08/11/2015 1800	TUE			
4. Operations Personnel						
DIVISION/GROUP SUPERVISOR	KOTTKE	AIR OPERATIONS	INGRAM			
5. Resources Assigned this Period						
Strike Team / Task Force / Resource Designator	LWD	Leader	Number Persons	Drop Off PT./Time	Pick Up PT./Time	
WATER TENDER E 9		PHILLIPS	1			
WATER TENDER E 10		BRUNER	1			
DOZER BERRYESSA		LOOPER	1			
DOZER NOD2		MUPHRY	2			
6. Control Operations/Work Assignments:						
Develop contingent plan for local IA around the fire and deploy resources as such						
7. Special Instructions:						
All vehicles to be weed washed prior to returning to home unit						
Any vehicle operating within the fire perimeter must be weed washed prior to going to the fire line						
Dodge Reservoir is available for fire suppression activities and road watering as deemed necessary by Operations						
8. Division/Group Communication Summary						
Function	Channel	RX Frequency N/W	RX Tone/NAC	TX Frequency N/W	TX Tone/NAC	Mode
COMMAND	10	168.4750	0000	173.8125	156.7	A
9. Prepared By (Resource Unit Leader)			Approved By (Planning Section Chief)		Date	Time
MAGENHEIMER					08/10/2015	1830

INCIDENT RADIO COMMUNICATIONS PLAN (ICS 205)

1. Incident Name:		2. Date/Time Prepared:		3. Operational Period:		Date/Time To:					
R-1 DODGE		Date: 08/10/2015 Time: 1925		Date/Time From: 08/11/2015 0600 DAY: TUE		Date/Time To: 08/11/2015 1800 TUE					
4. Basic Radio Channel Use:											
Zone Group	Ch #	Function	Channel Name/Trunked Radio System Talkgroup	Assignment	RX Freq	RX Tone/NAC	TX Freq	TX Tone/NAC	Mode (A, D, or M)	Remarks	
	1	TACTICAL	NIFC TAC 1	DIV A	168.0500	156.7	168.0500	156.7	A		
	2	TACTICAL	NIFC TAC 2	DIV M	168.2000	156.7	168.2000	156.7	A		
	3	TACTICAL	NIFC TAC 3	DIV Q	168.6000	156.7	168.6000	156.7	A		
	4	TACTICAL	NIFC TAC 4	DIV Y	166.7250	156.7	166.7250	156.7	A		
	5	TACTICAL	NIFC TAC 5	DIV T	166.7750	156.7	166.7750	156.7	A		
	6	TACTICAL	NIFC TAC 6	UNASSIGNED	168.2500	156.7	168.2500	156.7	A		
	7	TACTICAL	NIFC TAC 7	UNASSIGNED	166.6750	156.7	166.6750	156.7	A		
	8	TACTICAL	NIFC TAC 8	MEDICAL	154.2650	00000	154.2650	0000	A		
	9	TACTICAL	NIFC TAC 9	UNASSIGNED	169.2000	156.7	169.2000	156.7	A		
	10	COMMAND	NIFC COMMAND 6	COMMAND ALL	168.4750	0000	173.8125	156.7	A		
	11	COMMAND	NIFC CMD DIR	ALL DIVISIONS	168.4750	0000	168.4750	156.7	A		
	12	COMMAND	BLM RPT	COMMAND BACKUP	172.8125	0000	166.3125	167.9	A		
	13	COMMAND	NIFC COMMAND 8	ALL DIVISIONS	169.5375	0000	164.7125	156.7	A		
	14	AIR TO GROUND	AIR GROUND	ALL DIVISIONS	164.8375	0000	164.8375	0000	A		
	15	COMMAND	NIFC COMMAND 10	COMMAND ALL	170.4125	0000	165.9625	156.7	A		
	16	AIR GUARD	AIR GUARD	ALL DIVISIONS	168.6250	0000	168.6250	110.9	A		
5. Special Instructions:											
6. Prepared By				Name: DOWNING				Signature: 		Date/Time: 08/10/2015 1925	
(Communications Unit Leader)				IAP Page							
ICS 205				FINAL						Page 1 of 1	



SAFETY MESSAGE

SAFETY IS OUR FIRST PRIORITY

Fire fighter safety comes first on every fire, every time

Incident : Dodge fire	Date: August 11 th , 2015	Shift:
-----------------------	--------------------------------------	--------

LCES INCIDENT RESPONSE GUIDE WORK-REST GUIDELINES

SAFETY THOUGHT

75% of Americans are chronically dehydrated. At 2% dehydration, performance will fall off by 10-20% and is the #1 trigger of daytime fatigue.



MAJOR HAZARDS AND RISKS

A- Driving B-Steep Slopes C-Dehydration	D- Bucket Drops E- Rehab-Equipment F- Tree Falling	G- Crew Fatigue H- Communications I- Down Hill Line Construction
---	--	--

USE THE INCIDENT RESPONSE POCKET GUIDE DAILY

Assess The Situation

Identify Hazards

Determine Hazard Controls

PROCEDURAL APPROACH TO SAFETY

In a fire situation there are subjective hazards that we as firefighters create, and there are objective hazards such as fire entrapment, snags, rolling debris, and terrain that are inherent to firefighting. The subjective hazards we have control over just by using our attitudes and abilities. The objective hazards we cannot eliminate. The possibility of injury or entrapment is always there, the probability may be large or small. We must take steps to reduce the risks associated with our actions. By using a set procedure each operational period, we can minimize exposure to hazards and better ensure our safety by taking the following steps.

- Determine what the assignment is
- Identify the hazards
- Analyze the risks
- Implement steps to ensure safety
- Re-analyze the situation as it changes

Line Safety Officers See IAP	Safety Officers- Ramekers, Fraser
---------------------------------	--------------------------------------

Medical Plan (ICS 206 WF)

1. Incident/Project Name:		2. Operational Period: DAY					
R-1 DODGE		Date/Time From: 08/11/2015 0600 TUE	Date/Time To: 08/11/2015 1800 TUE				
3. Ambulance Services							
Name	Complete Address	Phone & EMS Frequency	Advanced Life Support (ALS) Yes No				
SEMSA	SUSANVILLE, CA 96130	(530) 257-5575	X				
4. Air Ambulance Services							
Name	Phone	Type of Aircraft	Capability				
MOUNTAIN LIFEFLIGHT	(530) 257-5575	A STAR	1 PATIENT				
5. Hospitals							
Name Complete Address	GPS Datum - WGS 84 Coordinate Standard Degrees Decimal Minutes DD° MM.MMM' N - Lat DD° MM.MMM' W - Long	Travel Time		Phone	Helipad		Level of Care Facility
		Air	Ground		Yes	No	
BANNER LASSEN MEDICAL 1800 SPRING RIDGE DRIVE SUSANVILLE, CA 96130	Lat: 40 26.182N Long: 120 39.237W VHF:	25 MINUTES	120 MINUTES	(530) 252-2000	X		LEVEL 3 TRAUMA
RENOWN MEDICAL CENTER 1155 MILL STREET RENO, NV 89502	Lat: 39 31.280N Long: 119 47.440W VHF: TX:468.100 RX:463.100 PL TONE: 24	34 MINUTES	3.5 HOURS	(775) 982-4100	X		TRAUMA/STEMI/STROKE
UC DAVIS BURN CENTER 2315 STOCKTON BLVD SACRAMENTO, CA 95817	Lat: 38 33.160N Long: 119 27.270W VHF: TX: 155.30 RX: 155.30	75 INUTES	5.5 HOURS	(916) 734-3636	X		BURN CENTER
6. Area Location Capability							
Branch Division/Group							
8. Prepared By (Medical Unit Leader)		9. Date/Time		10. Reviewed By (Safety Officer)		11. Date/Time	
MICHAEL PORTER MEDL(T)		08/10/2015 2100		SCOTT FRASER SOFR		08/10/2015 2100	

Medical Plan (ICS 206 WF)

1. Incident/Project Name:		2. Operational Period: DAY	
R-1 DODGE		Date/Time From: 08/11/2015 0600 TUE	Date/Time To: 08/11/2015 1800 TUE
6. Area Location Capability			
Branch Division/Group			
A	EMS Responders & Capability:	DARRIN WEBB FEMP, ANDREW LYMAN FEMP/EMT-PARAMEDIC	
	Equipment Available on Scene:	EMT-PARAMEDIC	
	Medical Emergency Channel:	TAC 8	
	ETA for Ambulance to Scene:		
	Air:	30 MINUTES	
	Ground:	120 MINUTES	
	Approved Helispot:		
	Lat:	PER DIV SUP	
	Long:	PER DIV SUP	
M	EMS Responders & Capability:	CREW EMTS/EMT--BASIC	
	Equipment Available on Scene:	EMT-BASIC	
	Medical Emergency Channel:	TAC 8	
	ETA for Ambulance to Scene:		
	Air:	30 MINUTES	
	Ground:	120 MINUTES	
	Approved Helispot:		
	Lat:	PER DIV SUP	
	Long:	PER DIV SUP	
Q	EMS Responders & Capability:	BRIAN KING FEMT, TAYLOR GARDNER FEMP/EMT-PARAMEDIC	
	Equipment Available on Scene:	EMT-PARAMEDIC	
	Medical Emergency Channel:	TAC 8	
	ETA for Ambulance to Scene:		
	Air:	30 MINUTES	
	Ground:	120 MINUTES	
	Approved Helispot:		
	Lat:	PER DIV SUP	
	Long:	PER DIV SUP	
8. Prepared By (Medical Unit Leader)	9. Date/Time	10. Reviewed By (Safety Officer)	11. Date/Time
MICHAEL PORTER MEDL(T)	08/10/2015 2100	SCOTT FRASER SOFR	08/10/2015 2100

Medical Plan (ICS 206 WF)

1. Incident/Project Name:	2. Operational Period: DAY		
R-1 DODGE	Date/Time From: 08/11/2015 0600	TUE	Date/Time To: 08/11/2015 1800
			TUE

6. Area Location Capability

Branch Division/Group		
T	EMS Responders & Capability:	CREW EMTS/EMT-BASIC
	Equipment Available on Scene:	EMT-BASIC
	Medical Emergency Channel:	TAC 8
	ETA for Ambulance to Scene:	
	Air:	30 MINUTES
	Ground:	120 MINUTES
	Approved Helispot:	
	Lat:	PER DIV SUP
	Long:	PER DIV SUP
Y	EMS Responders & Capability:	SHAWN KELLY FEMT, MIKE HORNACEK FEMP/EMT-PARAMEDIC
	Equipment Available on Scene:	EMT-PARAMEDIC
	Medical Emergency Channel:	TAC 8
	ETA for Ambulance to Scene:	
	Air:	30 MINUTES
	Ground:	120M INUTES
	Approved Helispot:	
	Lat:	PER DIV SUP
	Long:	PER DIV SUP
DODGE HELIBASE	EMS Responders & Capability:	AMBULANCE 174/ALS CAPABILITY
	Equipment Available on Scene:	ALS
	Medical Emergency Channel:	TAC 8
	ETA for Ambulance to Scene:	
	Air:	20 MINUTES
	Ground:	60 MINUTES
	Approved Helispot:	
	Lat:	
	Long:	

7. Remote Camp Location(s)

Name & Location			

8. Prepared By (Medical Unit Leader)	9. Date/Time	10. Reviewed By (Safety Officer)	11. Date/Time
MICHAEL PORTER MEDL(T)	08/10/2015 2100	SCOTT FRASER SOFR	08/10/2015 2100

Medical Plan (ICS 206 WF)

1. Incident/Project Name:		2. Operational Period: DAY	
R-1 DODGE		Date/Time From: 08/11/2015 0600 TUE	Date/Time To: 08/11/2015 1800 TUE
7. Remote Camp Location(s)			
Name & Location			
	Point Of Contact:		
	EMS Responders & Capability		
	Equipment Available on Scene:		
	Medical Emergency Channel:		
	ETA for Ambulance To Scene:		
	Air:		
	Ground:		
	Approved Helispot:		
	Lat:		
	Long:		
8. Prepared By (Medical Unit Leader)	9. Date/Time	10. Reviewed By (Safety Officer)	11. Date/Time
MICHAEL PORTER MEDL(T)	08/10/2015 2100	SCOTT FRASER SOFR	08/10/2015 2100

MEDICAL PLAN (ICS 206)

12. Medical Incident Procedures

FOR ALL MEDICAL EMERGENCIES: IDENTIFY ON SCENE INCIDENT COMMANDER BY NAME AND POSITION AND ANNOUNCE "MEDICAL EMERGENCY" TO INITIATE RESPONSE FROM IMT COMMUNICATIONS/DISPATCH.

Medical Incident Report

Use items one through nine to communicate situation to communications/dispatch.

1. CONTACT COMMUNICATIONS/DISPATCH

Ex: "Communications: Div. Alpha. Stand-by for Priority Medical Incident Report." (If life threatening, request designated frequency be cleared for emergency traffic.)

2. INCIDENT STATUS: Provide incident summary and command structure.

Nature of Injury/Illness		Describe the injury (Ex: Broken leg with bleeding)
Incident Name		Geographic Name + "Medical" (Ex: Trout Meadow Medical)
Incident Commander		Name of IC
Patient Care		Name of Care Provider (Ex: EMT Smith)

3. INITIAL PATIENT ASSESSMENT:

Complete this section for each patient. This is only a brief, initial assessment. Provide additional patient info after completing this 9 Line Report.

Number of Patients:	Male / Female	Age:	Weight:
Conscious?	<input type="checkbox"/> YES	<input type="checkbox"/> NO = MEDEVAC!	
Breathing?	<input type="checkbox"/> YES	<input type="checkbox"/> NO = MEDEVAC!	
Mechanism of Injury: What caused the injury?			
Lat/Long (Datum WG884) Ex: N 40° 42.45' x W 123° 03.24'			

4. SEVERITY OF EMERGENCY, TRANSPORT PRIORITY

SEVERITY	TRANSPORT PRIORITY
<input type="checkbox"/> URGENT-RED Life threatening injury or illness. Ex: Unconscious, difficulty breathing, bleeding severely, 2 - 3 degree burns more than 4 palm sizes, heat stroke, disoriented.	Ambulance or MEDEVAC helicopter. Evacuation need is IMMEDIATE .
<input type="checkbox"/> PRIORITY-YELLOW Serious Injury or illness. Ex: Significant trauma, not able to walk, 2 - 3 degree burns not more than 1-2 palm sizes.	Ambulance or consider air transport if at remote location. Evacuation may be DELAYED .
<input type="checkbox"/> ROUTINE-GREEN Not a life threatening injury or illness. Ex: Sprains, strains, minor heat-related illness.	Non-Emergency. Evacuation considered Routine of Convenience .

5. TRANSPORT PLAN:

Air Transport: (Agency Aircraft Preferred)			
<input type="checkbox"/> Helispot	<input type="checkbox"/> Short-haul/Hoist	<input type="checkbox"/> Life Flight	<input type="checkbox"/> Other
Ground Transport:			
<input type="checkbox"/> Self-Extract	<input type="checkbox"/> Carry-Out	<input type="checkbox"/> Ambulance	<input type="checkbox"/> Other

6. ADDITIONAL RESOURCE/EQUIPMENT NEEDS:

<input type="checkbox"/> Paramedic/EMT(s)	<input type="checkbox"/> Crew(s)	<input type="checkbox"/> SKED/Backboard/C-Collar
<input type="checkbox"/> Burn Sheet(s)	<input type="checkbox"/> Oxygen	<input type="checkbox"/> Trauma Bag
<input type="checkbox"/> Medication(s)	<input type="checkbox"/> IV/Fluid(s)	<input type="checkbox"/> Cardiac Monitor/AED
<input type="checkbox"/> Other (i.e. splints, rope rescue, wheeled litter)		

7. COMMUNICATIONS:

Function	Channel Name/Number	Receive (Rx)	Tone/NAC *	Transmit (Tx)	Tone/NAC *
Ex: Command	Forest Rpt, Ch. 2	168.3250	110.9	171.4325	110.9
COMMAND					
AIR-TO-GRND					
TACTICAL					

*(NAC for digital radio system)

8. EVACUATION LOCATION:

Lat/Long (Datum WG884) EX: N 40 42.45' x W 123 03.24'	
Patient's ETA to Evacuation Location:	
Helispot/Extraction Size and Hazards:	

9. CONTINGENCY:

Considerations: If primary options fail, what actions can be implemented in conjunction with primary evacuation method? Be thinking ahead...

REMEMBER:

- Confirm ETA's of resources ordered
- Act according to your level of training
- Be Alert. Keep Calm. Think Clearly. Act Decisively.

AIR OPERATIONS SUMMARY (ICS 220)

1. Incident Name:		2. Operational Period: DAY		3. Sunrise:		Sunset:	
R-1 DODGE		Date/Time From: 08/11/2015 0600 TUE		Date/Time To: 08/11/2015 1800 TUE		0608 2007	
4. Remarks (Safety Notes, Hazards, Air Op Special Equipment, etc.)		5. Ready Alert Aircraft:					
Hazard: Military aircraft operating unannounced Herlong Military Base: C-130, C-5, C-17(s) VLAT and C-130 MAFFS being used. Hazard: I MET Tower (Windmill) Lat: Degrees 40 57 57.82N Long: Degrees 120 03 53.01W		Medivac: HELICOPTER 3AE New Incident:					
7. Personnel:		8. Frequencies:		AM (Tone)		FM (Tone)	
Name:	Phone Number:	Air/Air Fixed-Wing	135.025	169.8250			
AIR OPERATIONS BRANCH DIRECTOR	(775) 240-2289	Air/Air Rotary-Wing - Flight Following	000.0				
AIR SUPPORT GROUP SUPERVISOR		Air/Ground		164.8375			
AIR TACTICAL GROUP SUPERVISOR	(530) 604-2861	nifc Command 6		000.0			
HELICOPTER COORDINATOR		Deck Coordinator		168.4750			
HELIBASE MANAGER		Take-Off & Landing Coordinator		156.7			
	(702) 556-2255	Air Guard					
				168.625			
				110.9			
11. Prepared by: Name: CHRIS INGRAM		Signature:					
ICS 220, Page 1 of 2		Position/Title: SFIMT RASNER AOBD		Date/Time: 08/09/2015 1800			

AIR OPERATIONS SUMMARY (ICS 220)

1. Incident Name: R-1 DODGE		2. Operational Period: DAY		3. Sunrise: 0608 Sunset: 2007	
		Date/Time From:	Date/Time To:		
		08/11/2015 0600	08/11/2015 1800		
		TUE	TUE		

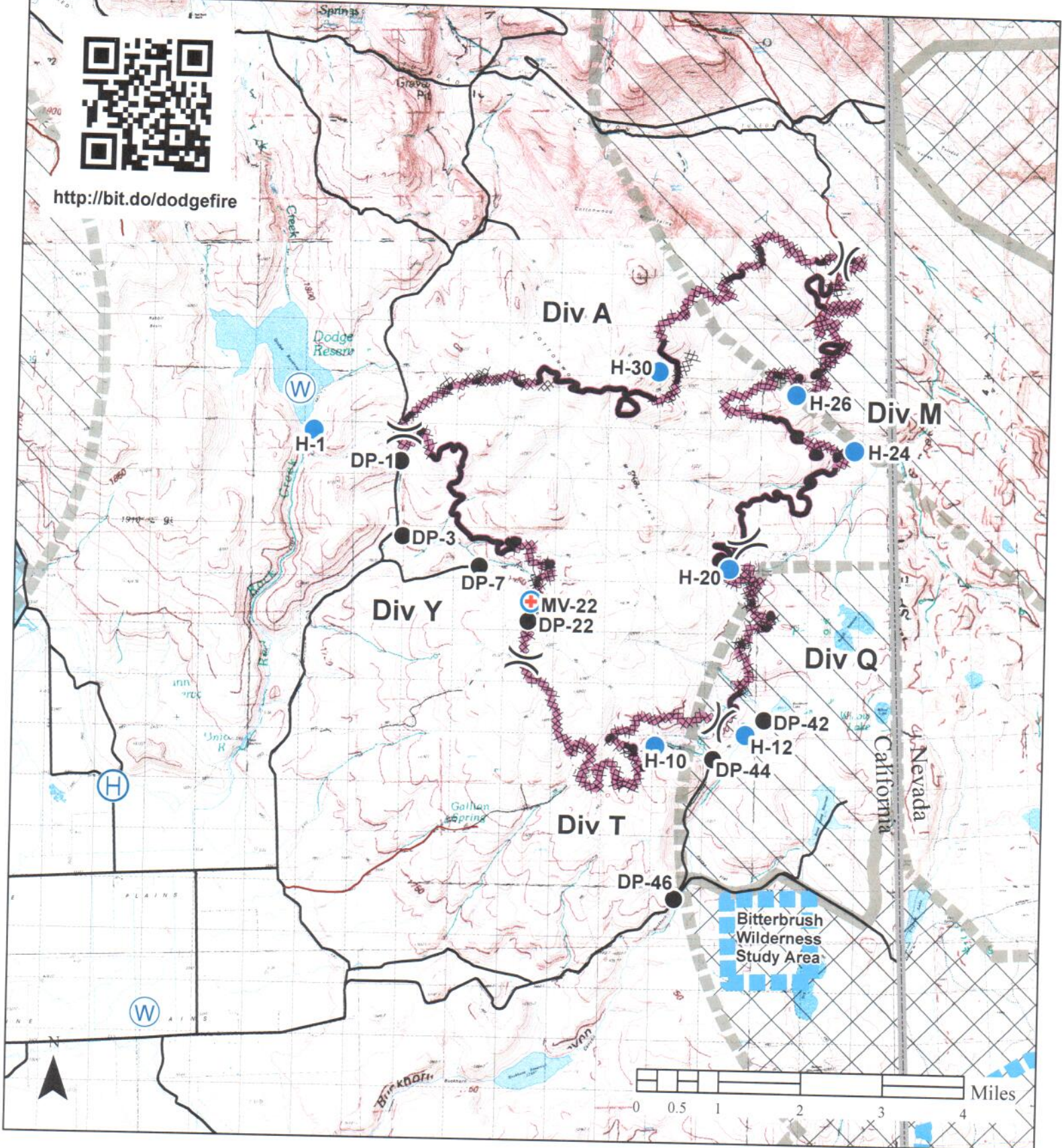
10. Helicopters (use additional sheets as necessary):	FAA N#	Category/Kind/Type	Make/Model	Base	Available	Start	Remarks
	3AE	TYPE 3	AS350 B3C	LAS VEGAS	0800	0900	Dodge Fire Helibase, deg 40 53.43, deg 120 11.99
	1BH	TYPE 3	AS350 B3C	RAVENDALE HELIBASE		0900	Ravendale Helibase: Deg 40 43.924, Deg 120 19.010. Available upon request.

12. Task/Mission/Assignment (category/Kind/type and function includes: air tactical, reconnaissance, personnel transport, search and rescue, etc.):	Name of Personnel or Cargo (if applicable) or Instructions for Tactical Aircraft	Mission Start	Fly From	Fly To

11. Prepared by: Name: CHRIS INGRAM	Position/Title: SFIMT RASNER AOBD
ICS 220, Page 2 of 2	Date/Time: 08/09/2015 1800
Signature: _____	



<http://bit.do/dodgefire>



Dodge Fire

IAP Map

CA-NOD-003806

8/11/2015

10,570 ac



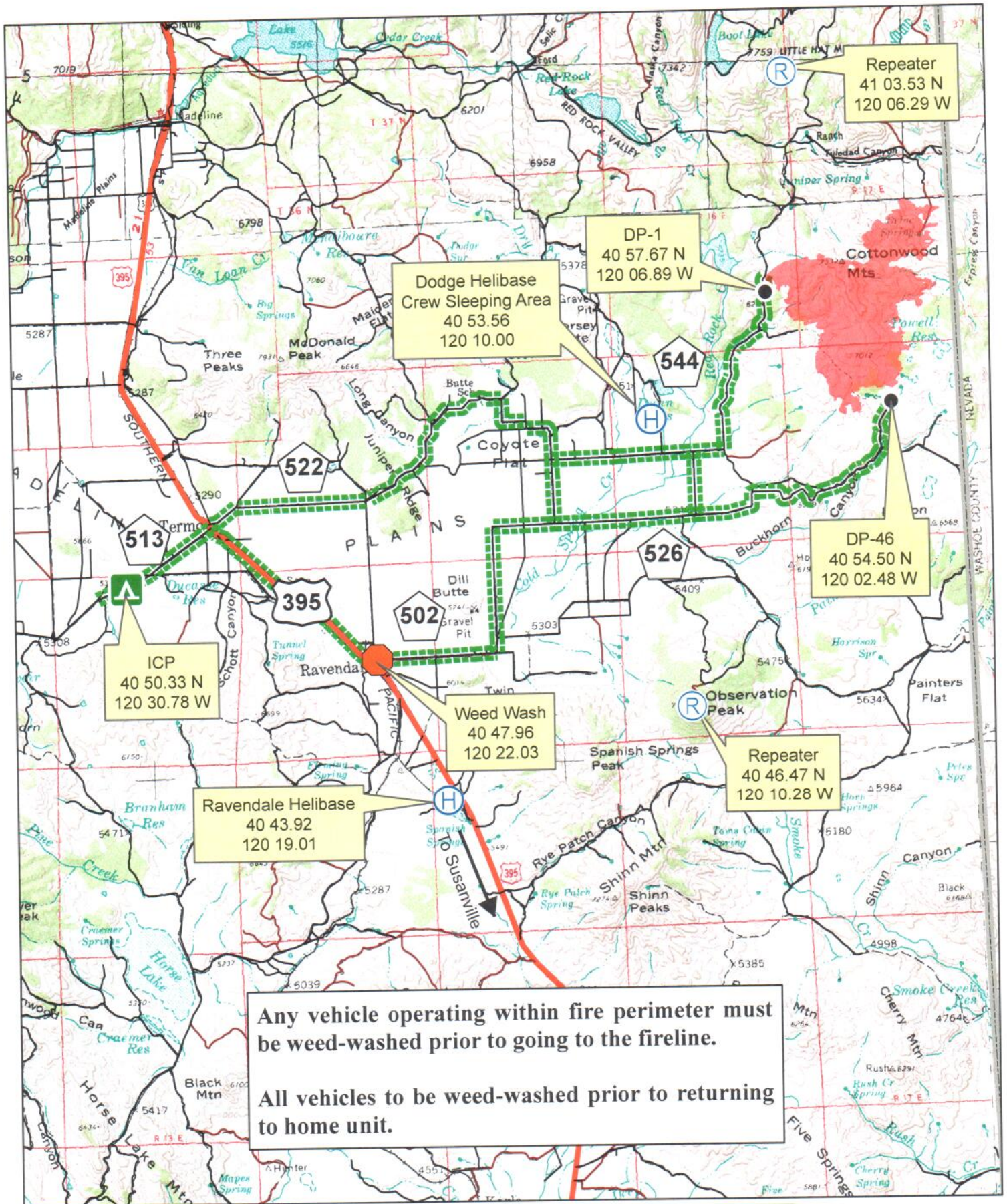
Nate Rasner
Sierra Front IMT



- Uncontrolled Fire Edge
- Completed Dozer Line
- Completed Line
- Drop Point

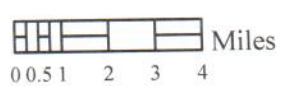
Legend

- Helispot
- Water Source
- FIAT Suppression Priorities**
- High
- Moderate



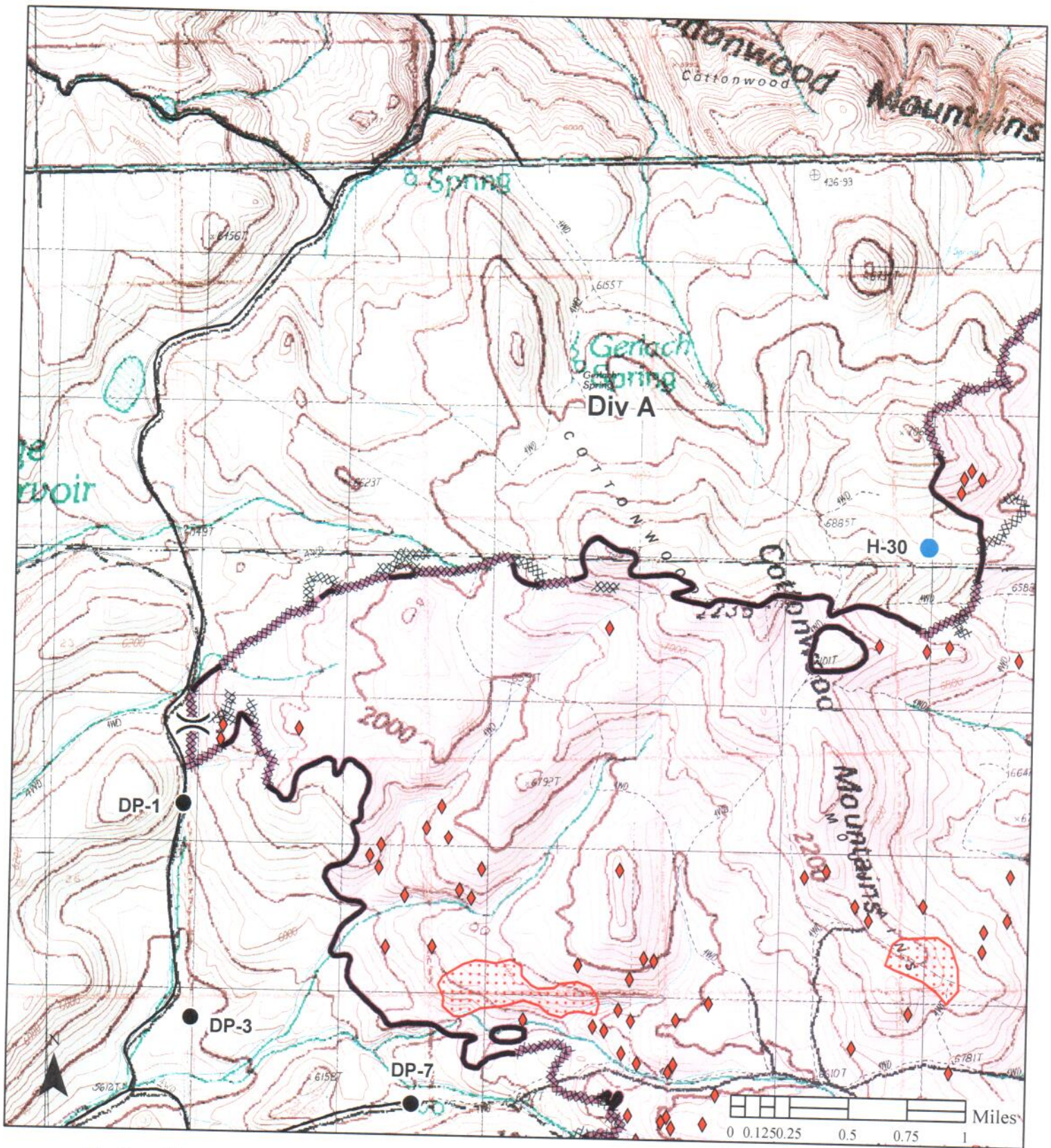
Any vehicle operating within fire perimeter must be weed-washed prior to going to the fireline.

All vehicles to be weed-washed prior to returning to home unit.



Dodge Fire Transport Map
CA-NOD-003806 8/11/2015





Dodge Fire
IAP Map
 CA-NOD-003806
 8/11/2015
 10,570 ac



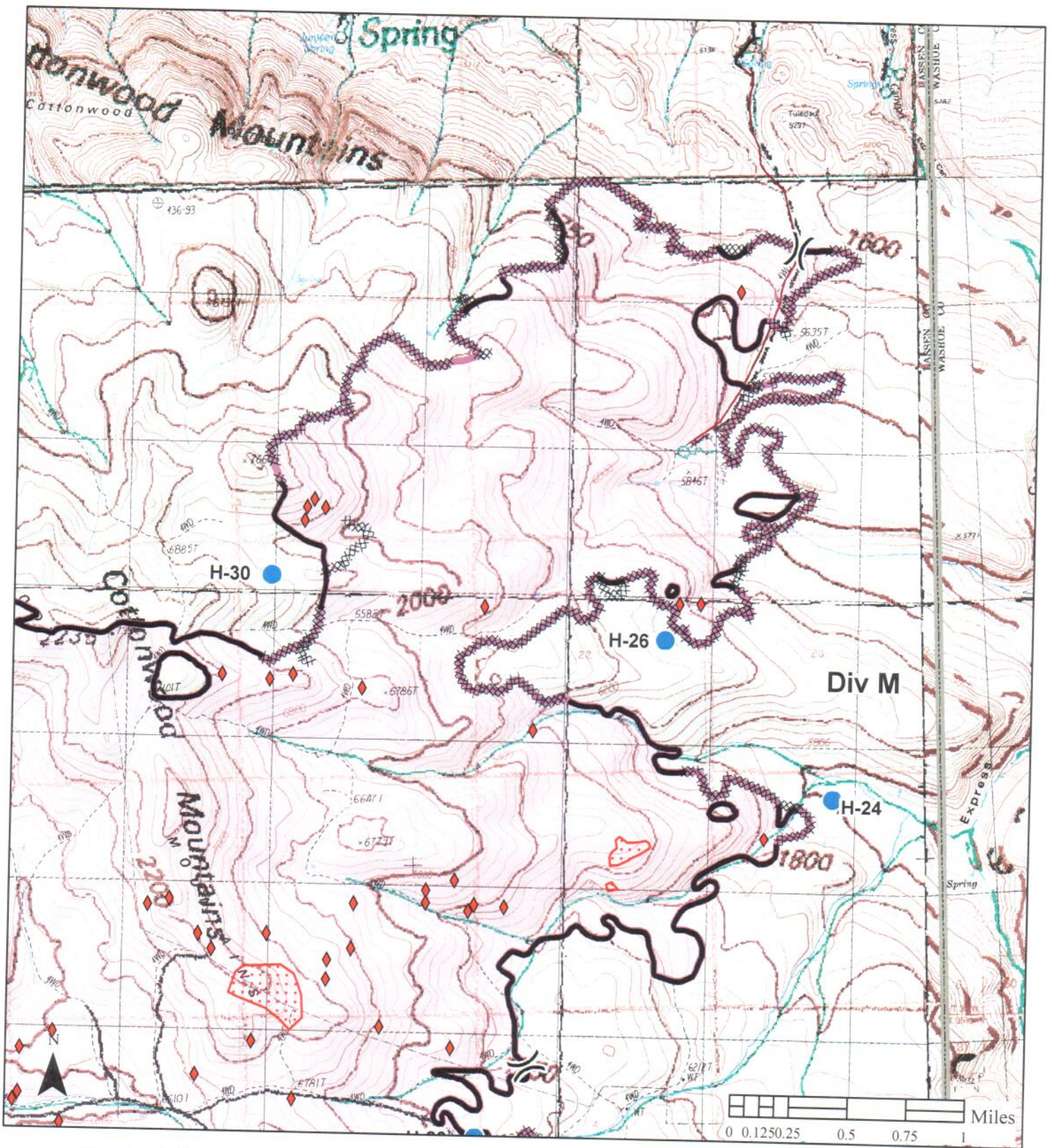
Nate Rasner
 Sierra Front IMT



- Uncontrolled Fire Edge
- Completed Dozer Line
- Completed Line
- Drop Point

Legend

- Helispot
- Water Source
- Infrared Heat Sources**
- Isolated Heat
- Scattered Heat



Dodge Fire
IAP Map
 CA-NOD-003806
 8/11/2015
 10,570 ac

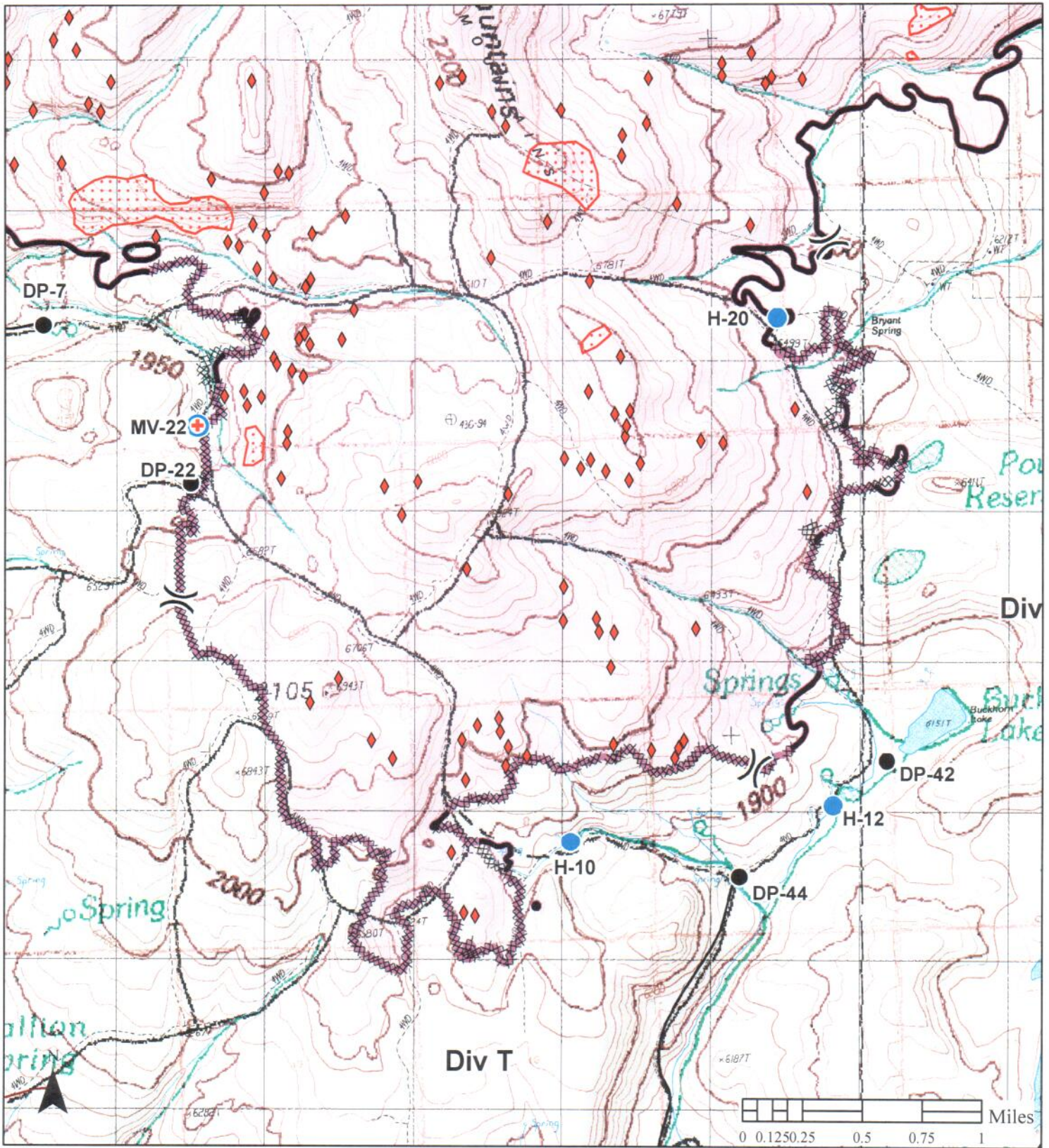


Nate Rasner
 Sierra Front IMT



Legend

- Uncontrolled Fire Edge
- Completed Dozer Line
- Completed Line
- Drop Point
- Helispot
- Water Source
- Infrared Heat Sources**
- Isolated Heat
- Scattered Heat



Dodge Fire
IAP Map
 CA-NOD-003806
 8/11/2015
 10,570 ac



Legend

- Uncontrolled Fire Edge
- Completed Dozer Line
- Completed Line
- Drop Point
- Helispot
- Water Source
- Infrared Heat Sources**
- Isolated Heat
- Scattered Heat

