



Dodge Fire

Incident Action Plan

August 12, 2015



Day Operations

Dodge


CA-NOD-003806

J0SD

INCIDENT OBJECTIVES (ICS 202)

1. Incident Name:		2. Operational Period: DAY	
R-1 DODGE		Date/Time From: 08/12/2015 0600 WED	Date/Time To: 08/12/2015 1800 WED
3. Objective(s):			
<p>Firefighter and public safety will be the number one concern in all fire management activities</p> <p>-Assure that safety of firefighter, aviation, support personnel, and the public is the highest priority at all times for the duration of the incident</p> <p>Protect all structures, private lands and values at risk without compromising firefighter and public safety.</p> <p>Utilize resources cost-effectively</p> <p>Protect all sage grouse habitat, cultural resources, wilderness study areas and recreation areas.</p>			
4. Operational Period Command Emphasis:			
Keep the Fire within current containment lines			
General Situational Awareness:			
Fire behavior has moderated due to containment efforts and recent weather. No further fire growth is expected.			
5. Site Safety Plan Required? Yes <input type="checkbox"/> No <input checked="" type="checkbox"/>			
Approved Site Safety Plan(s) Located at:			
6. Incident Action Plan (the items checked below are included in this Incident Action Plan):			
<input checked="" type="checkbox"/> ICS 202	<input type="checkbox"/> ICS 207	Other Attachments:	
<input checked="" type="checkbox"/> ICS 203	<input type="checkbox"/> ICS 208	<input type="checkbox"/>	_____
<input checked="" type="checkbox"/> ICS 204	<input checked="" type="checkbox"/> ICS 220	<input type="checkbox"/>	_____
<input checked="" type="checkbox"/> ICS 205	<input checked="" type="checkbox"/> Map/Chart	<input type="checkbox"/>	_____
<input type="checkbox"/> ICS 205A	<input checked="" type="checkbox"/> Weather Forecast/Tides/Currents	<input type="checkbox"/>	_____
<input type="checkbox"/> ICS 206			
7. Prepared by: MAGENHEIMER		Position/Title: PSC3	Signature: 
8. Approved by Incident Commander:		Name: <i>Nate Rusner</i>	Signature: 
ICS 202	IAP Page	Date/Time: 08/11/2015 2210	

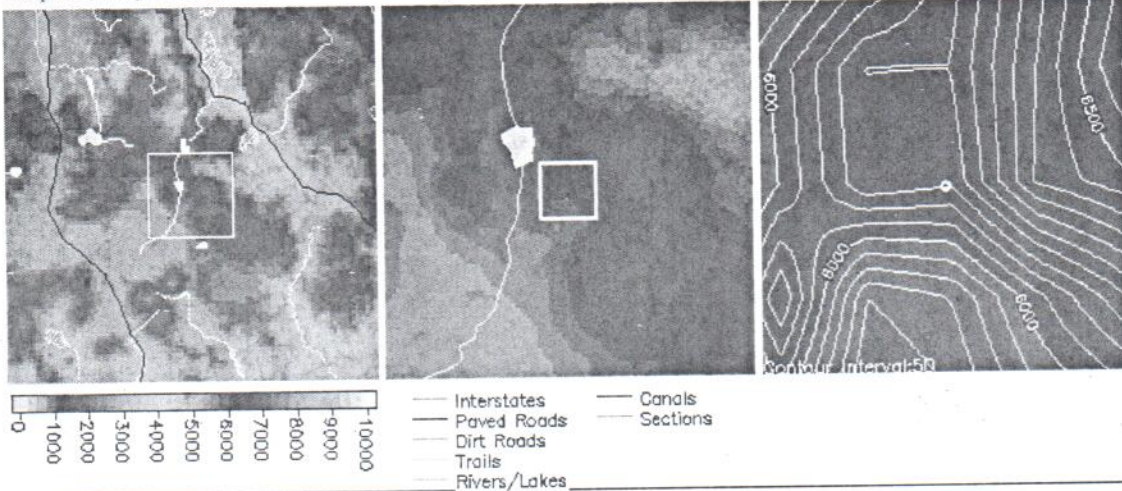
ORGANIZATION ASSIGNMENT LIST (ICS 203)

1. Incident Name:		2. Operational Period: DAY	
R-1 DODGE		Date/Time From: 08/12/2015 0600	Date/Time To: 08/12/2015 1800
		WED	WED
3. Incident Commander(s) and Command Staff:		LOGISTICS	
IC	NATE RASNER MARK WINKLEMAN (T)	7. Operations Section:	
IC	LUIS GOMEZ (T)	DAY OPS SECTION CHIEF	MIKE HEIKKA
SAFETY OFFICER	STEVE RAMEKERS	PLANNING OPS	RYAN SOMMERS
INFORMATION OFFICER	BETH KENNA MARK REGAN	OPS SECTION CHIEF	
LIAISON OFFICER		DEPUTY OPS SECTION CHIEF	
		STAGING AREA	
4. Agency/Organization Representative(s):			
Agency/Organization	Name	7b. Air Operations Branch:	
DISTRICT MANAGER	NANCY HAUG	AIR OPS BRANCH DIRECTOR	CHRIS INGRAM
BLM AREA REP	EMILY RYAN	AIR ATTACK SUPERVISOR	
BLM AREA REP	DENNIS SYLVIA	AIR SUPPORT SUPERVISOR	
DFMO NORCAL DISTRICT	WALTER HERZOG	HELICOPTER COORDINATOR	
		AIR TANKER COORDINATOR	
5. Planning Section:		8. Finance/Administration Section:	
CHIEF	CHRIS MAGENHEIMER	CHIEF	BONNIE KENNEDY
DEPUTY		EQUIPMENT COSTS	DONNA COONEY
RESOURCES UNIT	TERRE PEARSON RAMIREZ	TIME UNIT	ZANDRA ZAVALZA
SITUATION UNIT			
DOCUMENTATION UNIT			
DEMOBILIZATION UNIT			
FIRE BEHAVIOR ANALYST			
HUMAN RESOURCE SPECIALIST			
TRAINING SPECIALIST			
GIS SPECIALIST	FOREST SCHAFER		
COMPUTER SPECIALIST			
INCIDENT METEOROLOGIST			
6. Logistics Section:			
CHIEF	JUSTIN LANGFORD EMILY LUTZ		
CHIEF	BOBBY WILLIS (T)		
SUPPLY UNIT			
FACILITIES UNIT			
GROUND SUPPORT UNIT			
COMMUNICATIONS UNIT	RANDY WILLIAMS MARK DOWNING (T)		
MEDICAL UNIT	ANTHONY GASPORRA MIKE PORTER (T)		
SECURITY UNIT			
FOOD UNIT	DILLE, LOYD C		
9. Prepared By:	Name: MAGENHEIMER	Position/Title: PSC 3	Signature:
ICS 203	IAP Page	Date/Time: 08/11/2015 1815	

Dodge (WILDFIRE) (Requested: 2103 PDT 8/11/15)

Forecast complete at 2121 PDT 8/11/15

Requested by: Sierra Front IMT Phone:(702) 979-1765



Location: Legal: Lat/Lon:40 57 29/120 6 32 Quad:
 Calculated:(40°57'29"N 120°6'32"W) (BUCKHORN LAKE CA)
 Elevation:6100-7300 Drainage:unknown Aspect:South Size:unknown
 Fuel Type:sage / juniper (Partially Sheltered)

Observations:

Place Elev Time Wind Temp Wetbulb RH Dewpt Remarks

Requested Parameters

Remarks

... Clouds / Weather	Can I please have this back by
... Temperature	2200 tonight
... Relative Humidity	Thanks
... 20 Foot Wind	Chris
... Smoke Dispersion	

FORECAST:

IF CONDITIONS BECOME UNREPRESENTATIVE,
 CONTACT THE NATIONAL WEATHER SERVICE.
 ...FIRE WEATHER WATCH IN EFFECT ON THURSDAY FOR GUSTY WINDS AND VERY
 LOW HUMIDITY...


DISCUSSION...A DRY SOUTH TO SOUTHWEST FLOW WILL PERSIST THROUGH
 THURSDAY. THIS WILL BRING PERIODS OF GUSTY WINDS AND VERY LOW
 HUMIDITY THE NEXT COUPLE DAYS. LOW PRESSURE WILL MOVE INLAND ON
 THURSDAY TO HELP INCREASE WINDS SPEEDS AND BRING THE POTENTIAL FOR
 RED FLAG CONDITIONS.

FOR TONIGHT STARTING AT 2200
 WEATHER.....CLEAR.
 TEMPERATURE.....MIN 51-56.
 HUMIDITY.....MAX 40-45%.
 WIND...20 FOOT.....DOWNSLOPE 2-5 MPH.


FOR WEDNESDAY
 WEATHER.....SUNNY.
 TEMPERATURE.....MAX 80-85.
 HUMIDITY.....MIN 7-12%.
 WIND...20 FOOT.....UPSLOPE 3-6 MPH BECOMING SOUTH-SOUTHWEST
 8-14 MPH WITH GUSTS TO 25 MPH AROUND 1200.

FOR WEDNESDAY NIGHT


Division/Group Assignment List (ICS 204 WF)

1. Incident Name:			3.			
R-1 DODGE			Branch:		Division/Group: DIVISION A	
2. Operational Period: DAY						
Date/Time From: 08/12/2015 0600 WED		Date/Time To: 08/12/2015 1800 WED				
4. Operations Personnel						
DIVISION/GROUP SUPERVISOR		DIXON, LARSON (T)		AIR OPERATIONS		CHRIS INGRAM
5. Resources Assigned this Period						
Strike Team / Task Force / Resource Designator		LWD	Leader	Number Persons	Drop Off PT./Time	Pick Up PT./Time
CREW TYPE 2 RUBICON 8			SCHROEDER	20		
TYPE 3 FIRESTORM E 9907			PEARCE	3		
TYPE 3 ENGINE 5274			MORGAN	3		
TYPE 6 E 5670			LOONEY	3		
DOZER HOLT			SIMPSON	1		
HEAVY EQUIPMEBNT BOSS			SANTIO	1		
LINE EMT-B			KING			
6. Control Operations/Work Assignments:						
Mop-up 300 feet into black						
Cold trail and begin fire suppression damage repair per READ						
7. Special Instructions:						
Maintain unburned fuel islands						
All vehicles to be weed washed prior to returning to home unit						
Any vehicle operating within the fire perimeter must be weed washed prior to going to the fire line						
Dodge Reservoir is available for fire suppression activities and road watering as deemed necessary by Operations						
Do not touch or remove any artifacts from the fire line or burn area						
8. Division/Group Communication Summary						
Function	Channel	RX Frequency N/W	RX Tone/NAC	TX Frequency N/W	TX Tone/NAC	Mode
TACTICAL	1	168.0500	156.7	168.0500	156.7	A
COMMAND	10	168.4750	0000	173.8125	156.7	A
COMMAND	11	168.4750	0000	168.4750	156.7	A
AIR TO GROUND	14	164.8375	0000	164.8375	0000	A
9. Prepared By (Resource Unit Leader)			Approved By (Planning Section Chief)		Date	Time
MAGENHEIMER					08/10/2015	1820


Division/Group Assignment List (ICS 204 WF)

1. Incident Name:		3.				
R-1 DODGE		Branch:	Division/Group: DIVISION M			
2. Operational Period: DAY						
Date/Time From: 08/12/2015 0600	WED	Date/Time To: 08/12/2015 1800	WED			
4. Operations Personnel						
DIVISION/GROUP SUPERVISOR	VAN ORMER, JOHNSON	AIR OPERATIONS	CHRIS INGRAM			
5. Resources Assigned this Period						
Strike Team / Task Force / Resource Designator	LWD	Leader	Number Persons	Drop Off PT./Time	Pick Up PT./Time	
CREW TYPE 2 HVP 60		FOSTER	20			
TYPE 2 CREW RUBICON 7		VIZCAINO	20			
HELITACK LAS VEGAS		RHEA	8			
CREW TYPE 2 COOPER CONTRACTING		PETERSON	19			
ENGINE TYPE 6 FIRESTORM 9910		LUDLOW	3			
TYPE 6 ENGINE SIERRA 9		ROWSEY	3			
SAFETY OFFICER		HADE				
LINE EMT-P		WEBB				
6. Control Operations/Work Assignments:						
Maintain and improve existing line.						
Mop-up 300' into black..						
7. Special Instructions:						
Fly crew HVP 60 to H 24. Crew to be at Helibase by 0800 for flight Fly Line EMT-P Webb with crew						
Maintain unburned fuel islands. All vehicles to be weed washed prior to returning to home unit Any vehicle operating within the fire perimeter must be weed washed prior to going to the fire line Dodge Reservoir is available for fire suppression activities and road watering as deemed necessary by Operations Do not touch or remove any artifacts from the fire line or burn area						
8. Division/Group Communication Summary						
Function	Channel	RX Frequency N/W	RX Tone/NAC	TX Frequency N/W	TX Tone/NAC	Mode
TACTICAL	2	168.2000	156.7	168.2000	156.7	A
COMMAND	10	168.4750	0000	173.8125	156.7	A
COMMAND	11	168.4750	0000	168.4750	156.7	A
AIR TO GROUND	14	164.8375	0000	164.8375	0000	A
9. Prepared By (Resource Unit Leader)		Approved By (Planning Section Chief)		Date	Time	
MAGENHEIMER				08/11/2015	1845	

Division/Group Assignment List (ICS 204 WF)

1. Incident Name:		3.				
R-1 DODGE		Branch:		Division/Group: DIVISION Q		
2. Operational Period: DAY						
Date/Time From: 08/12/2015 0600	WED	Date/Time To: 08/12/2015 1800	WED			
4. Operations Personnel						
DIVISION/GROUP SUPERVISOR		DUNING, GANNON, (T)		AIR OPERATIONS		CHRIS INGRAM
5. Resources Assigned this Period						
Strike Team / Task Force / Resource Designator		LWD	Leader	Number Persons	Drop Off PT./Time	Pick Up PT./Time
TYPE 2 CREW ACOMA			VALLO	20		
DOZER NOD 2			MUPHRY	2		
SAFETY OFFICER			FEMMEL	1		
LINE EMT-P			GARDNER			
HEAVY EQUIPMENT BOSS			KOTTKE			
6. Control Operations/Work Assignments:						
Mop-up 300' into the black						
7. Special Instructions:						
Fly Acoma Crew to drop-point H-20. Crew to be at Helibase by 0830 Fly Line EMT-P Gardner with crew						
Maintain unburned fuel islands. All vehicles to be weed washed prior to returning to home unit Any vehicle operating within the fire perimeter must be weed washed prior to going to the fire line Dodge Reservoir is available for fire suppression activities and road watering as deemed necessary by Operations Do not touch or remove any artifacts from the fire line or burn area						
8. Division/Group Communication Summary						
Function	Channel	RX Frequency N/W	RX Tone/NAC	TX Frequency N/W	TX Tone/NAC	Mode
TACTICAL	3	168.6000	156.7	168.6000	156.7	A
COMMAND	10	168.4750	0000	173.8125	156.7	A
COMMAND	11	168.4750	0000	168.4750	156.7	A
AIR TO GROUND	14	164.8375	0000	164.8375	0000	A
9. Prepared By (Resource Unit Leader)			Approved By (Planning Section Chief)		Date	Time
MAGENHEIMER					08/11/2015	2130

Division/Group Assignment List (ICS 204 WF)

1. Incident Name:			3.			
R-1 DODGE			Branch:		Division/Group: DIVISION T	
2. Operational Period: DAY						
Date/Time From: 08/12/2015 0600 WED		Date/Time To: 08/12/2015 1800 WED				
4. Operations Personnel						
DIVISION/GROUP SUPERVISOR		HAMRICK, GREYSHIELD (T)		AIR OPERATIONS		CHRIS INGRAM
5. Resources Assigned this Period						
Strike Team / Task Force / Resource Designator		LWD	Leader	Number Persons	Drop Off PT./Time	Pick Up PT./Time
CREW TYPE 2 SACRAMENTO			CRITTENDER	20		
ENGINE TYPE 6 BLM E76			GENAO	4		
E 5273			COOPER	3		
UTV						
SAFETY OFFICER			MOLVE			
EMT -P			LYMAN			
6. Control Operations/Work Assignments:						
Hold and improve existing line. Mop-up 300 feet into black						
7. Special Instructions:						
Maintain unburned fuel islands All vehicles to be weed washed prior to returning to home unit Any vehicle operating within the fire perimeter must be weed washed prior to going to the fire line Dodge Reservoir is available for fire suppression activities and road watering as deemed necessary by Operations Do not touch or remove any artifacts from the fire line or burn area						
8. Division/Group Communication Summary						
Function	Channel	RX Frequency N/W	RX Tone/NAC	TX Frequency N/W	TX Tone/NAC	Mode
TACTICAL	5	166.7750	156.7	166.7750	156.7	A
COMMAND	10	168.4750	0000	173.8125	156.7	A
COMMAND	11	168.4750	0000	168.4750	156.7	A
AIR TO GROUND	14	164.8375	0000	164.8375	0000	A
9. Prepared By (Resource Unit Leader)			Approved By (Planning Section Chief)		Date	Time
MAGENHEIMER					08/11/2015	1850

Division/Group Assignment List (ICS 204 WF)

1. Incident Name:		3.	
R-1 DODGE		Branch:	Division/Group:
2. Operational Period: DAY		DIVISION Y	
Date/Time From: 08/12/2015 0600 WED	Date/Time To: 08/12/2015 1800 WED		

4. Operations Personnel			
DIVISION/GROUP SUPERVISOR	DANEN KRACHE (T)	AIR OPERATIONS	CHRIS INGRAM

5. Resources Assigned this Period					
Strike Team / Task Force / Resource Designator	LWD	Leader	Number Persons	Drop Off PT./Time	Pick Up PT./Time
CREW TYPE 2IA MHR1		SMITH	19		
CREW TYPE 2 WNA 1		SHARP	20		
NEVADA TASK FORCE 3		VANDERSLICE	21		
LINE EMT -P		HORNACEK			
LINE EMT		KELLY			

6. Control Operations/Work Assignments:

Maintain and improve existing line

Mop-up 300' into the black

7. Special Instructions:

Maintain unburned fuel islands

All vehicles to be weed washed prior to returning to home unit

Any vehicle operating within the fire perimeter must be weed washed prior to going to the fire line


Dodge Reservoir is available for fire suppression activities and road watering as deemed necessary by Operations

Do not touch or remove any artifacts from the fire line or burn area

8. Division/Group Communication Summary						
Function	Channel	RX Frequency N/W	RX Tone/NAC	TX Frequency N/W	TX Tone/NAC	Mode
TACTICAL	4	166.7250	156.7	166.7250	156.7	A
COMMAND	10	168.4750	0000	173.8125	156.7	A
COMMAND	11	168.4750	0000	168.4750	156.7	A
AIR TO GROUND	14	164.8375	0000	164.8375	0000	A

9. Prepared By (Resource Unit Leader)	Approved By (Planning Section Chief)	Date	Time
MAGENHEIMER		08/11/2015	1900

Division/Group Assignment List (ICS 204 WF)

1. Incident Name:			3.			
R-1 DODGE			Branch:	Division/Group: HELIBASE		
2. Operational Period: DAY						
Date/Time From: 08/12/2015 0600 WED		Date/Time To: 08/12/2015 1800 WED				
4. Operations Personnel						
AIR OPERATIONS SUPERVISOR	CHRIS INGRAM	OPERATIONS CHIEF				
BRANCH DIRECTOR		DIVISION/GROUP SUPERVISOR				
AIR ATTACK SUPERVISOR						
5. Resources Assigned this Period						
Strike Team / Task Force / Resource Designator	LWD	Leader	Number Persons	Drop Off PT./Time	Pick Up PT./Time	
WATER TENDER E 50		JEWELL	1			
WATER TENDER E 59		HALE	1			
6. Control Operations/Work Assignments:						
Support helibase as needed						
Track and report water usage						
7. Special Instructions:						
Maintain unburned fuel islands All vehicles to be weed washed prior to returning to home unit Any vehicle operating within the fire perimeter must be weed washed prior to going to the fire line Dodge Reservoir is available for fire suppression activities and road watering as deemed necessary by Operations Do not touch or remove any artifacts from the fire line or burn area						
8. Division/Group Communication Summary						
Function	Channel	RX Frequency N/W	RX Tone/NAC	TX Frequency N/W	TX Tone/NAC	Mode
COMMAND	10	168.4750	0000	173.8125	156.7	A
9. Prepared By (Resource Unit Leader)			Approved By (Planning Section Chief)		Date	Time
MAGENHEIMER					08/11/2015	1835

SAFETY MESSAGE

SAFETY IS OUR FIRST PRIORITY

Fire fighter safety comes first on every fire, every time

Incident: Dodge

Date: 08/12/15

Shift: Day

Lessons Learned: Water Tender Roll Over



Date/Time: 1200 hours, May 25, 2007 on the Bolli Incident

Location: Forest Road 35N18, Shasta-McCloud Management Unit, Shasta-Trinity National Forest

Purpose: WT-E-41 was assigned to watering Forest Road 35N18, the main access route to the fire, for dust abatement.

Narrative: The Type II water tender was traveling at an estimated 5 – 10 miles per hour on a slight uphill grade on a straight section with good site distance when the driver's side tires left the hardened road surface, collapsing the road edge and causing the vehicle to roll and slide down the embankment approximately 200 feet. No other vehicles were involved. Environmental and equipment factors do not appear to have been causal factors. The travel wear surface of this Maintenance Level 2 road was approximately 11 feet wide. The road surface was dry and the surface was flat and well graded with no out sloping. The driver left the traveled roadway and got too close to the edge. The driver was ejected during the rollover and suffered lacerations to the head and a broken thumb. The water tank was separated from the chassis and the truck cab was sheared off.

Lesson(s) Learned:

- Even at slow speeds, things can go wrong.
- Heavier vehicles will be at greater risk on soft shoulders.
- Take full advantage of the inside (uphill) road edge.
- Keep your wheels on the traveled roadway: don't be the one to "test" the shoulder.
- Know where your wheels are. Are mirrors adjusted so that you can see your right rear tires?
- Maintaining Situational Awareness is not just for the fire line.
- Stay rested and focused on the driving task, it will allow for quicker reaction time.
- Don't get complacent about a familiar task or section of road. Overconfidence means you are underestimating risks and hazards.

Line Safety Officer

Hade, Femmel, Molve

Safety Officer

Ramaekers

Medical Plan (ICS 206 WF)

1. Incident/Project Name:	2. Operational Period: DAY		
R-1 DODGE	Date/Time From: 08/12/2015 0600	WED	Date/Time To: 08/12/2015 1800
			WED

3. Ambulance Services				
Name	Complete Address	Phone & EMS Frequency	Advanced Life Support (ALS)	
			Yes	No
SEMSA	SUSANVILLE, CA 96130	(530) 257-5575		X

4. Air Ambulance Services			
Name	Phone	Type of Aircraft	Capability
MOUNTAIN LIFEFLIGHT	(530) 257-5575	A STAR	1 PATIENT

5. Hospitals							
Name Complete Address	GPS Datum - WGS 84 Coordinate Standard Degrees Decimal Minutes DD° MM.MMM' N - Lat DD° MM.MMM' W - Long	Travel Time		Phone	Helipad		Level of Care Facility
		Air	Ground		Yes	No	
BANNER LASSEN MEDICAL 1800 SPRING RIDGE DRIVE SUSANVILLE, CA 96130	Lat: 40 26.182N Long: 120 39.237W VHF:	25 MINUTES	120 MINUTES	(530) 252-2000	X		LEVEL 3 TRAUMA
RENOWN MEDICAL CENTER 1155 MILL STREET RENO, NV 89502	Lat: 39 31.280N Long: 119 47.440W VHF: TX:468.100 RX:463.100 PL TONE: 24	34 MINUTES	3.5 HOURS	(775) 982-4100	X		TRAUMA/STEMI/STROKE
UC DAVIS BURN CENTER 2315 STOCKTON BLVD SACRAMENTO, CA 95817	Lat: 38 33.160N Long: 119 27.270W VHF: TX: 155.30 RX: 155.30	75 INUTES	5.5 HOURS	(916) 734-3636	X		BURN CENTER

6. Area Location Capability	
Branch Division/Group	

8. Prepared By (Medical Unit Leader)	9. Date/Time	10. Reviewed By (Safety Officer)	11. Date/Time
MICHAEL PORTER MEDL(T)	08/11/2015 2100	STEVE RAMEKERS SOFR	08/11/2015 2100

Medical Plan (ICS 206 WF)

1. Incident/Project Name:	2. Operational Period: DAY		
R-1 DODGE	Date/Time From: 08/12/2015 0600	WED	Date/Time To: 08/12/2015 1800
			WED

6. Area Location Capability

Branch Division/Group		
A	EMS Responders & Capability:	LINE EMT-B KING
	Equipment Available on Scene:	EMT-BASIC
	Medical Emergency Channel:	TAC 8
	ETA for Ambulance to Scene:	
	Air:	30 MINUTES
	Ground:	120 MINUTES
	Approved Helispot:	
	Lat:	PER DIV SUP
	Long:	PER DIV SUP
M	EMS Responders & Capability:	LINE EMT-P WEBB
	Equipment Available on Scene:	EMT-PARAMEDIC
	Medical Emergency Channel:	TAC 8
	ETA for Ambulance to Scene:	
	Air:	30 MINUTES
	Ground:	120 MINUTES
	Approved Helispot:	
	Lat:	PER DIV SUP
	Long:	PER DIV SUP
Q	EMS Responders & Capability:	LINE EMT-P GARDNER
	Equipment Available on Scene:	EMT-PARAMEDIC
	Medical Emergency Channel:	TAC 8
	ETA for Ambulance to Scene:	
	Air:	30 MINUTES
	Ground:	120 MINUTES
	Approved Helispot:	
	Lat:	PER DIV SUP
	Long:	PER DIV SUP

--	--	--

8. Prepared By (Medical Unit Leader)	9. Date/Time	10. Reviewed By (Safety Officer)	11. Date/Time
MICHAEL PORTER MEDL(T)	08/11/2015 2100	STEVE RAMEKERS SOFR	08/11/2015 2100

Medical Plan (ICS 206 WF)

1. Incident/Project Name:		2. Operational Period: DAY	
R-1 DODGE		Date/Time From: 08/12/2015 0600 WED	Date/Time To: 08/12/2015 1800 WED
6. Area Location Capability			
Branch Division/Group			
T	EMS Responders & Capability:	LINE EMT-P LYMAN	
	Equipment Available on Scene:	EMT-PARAMEDIC	
	Medical Emergency Channel:	TAC 8	
	ETA for Ambulance to Scene:		
	Air:	30 MINUTES	
	Ground:	120 MINUTES	
	Approved Helispot:		
	Lat:	PER DIV SUP	
	Long:	PER DIV SUP	
Y	EMS Responders & Capability:	LINE EMT-P HORNACEK, LINE EMT-B KELLY	
	Equipment Available on Scene:	EMT-PARAMEDIC	
	Medical Emergency Channel:	TAC 8	
	ETA for Ambulance to Scene:		
	Air:	30 MINUTES	
	Ground:	120M INUTES	
	Approved Helispot:		
	Lat:	PER DIV SUP	
	Long:	PER DIV SUP	
DODGE HELIBASE	EMS Responders & Capability:	AMBULANCE 174/ALS CAPABILITY	
	Equipment Available on Scene:	ALS	
	Medical Emergency Channel:	TAC 8	
	ETA for Ambulance to Scene:		
	Air:	20 MINUTES	
	Ground:	60 MINUTES	
	Approved Helispot:		
	Lat:		
	Long:		
7. Remote Camp Location(s)			
Name & Location			
8. Prepared By (Medical Unit Leader)	9. Date/Time	10. Reviewed By (Safety Officer)	11. Date/Time
MICHAEL PORTER MEDL(T)	08/11/2015 2100	STEVE RAMEKERS SOFR	08/11/2015 2100

Medical Plan (ICS 206 WF)

1. Incident/Project Name:	2. Operational Period: DAY	
R-1 DODGE	Date/Time From: 08/12/2015 0600 WED	Date/Time To: 08/12/2015 1800 WED

7. Remote Camp Location(s)

Name & Location		
	Point Of Contact:	
	EMS Responders & Capability	
	Equipment Available on Scene:	
	Medical Emergency Channel:	
	ETA for Ambulance To Scene:	
	Air:	
	Ground:	
	Approved Helispot:	
	Lat:	
	Long:	

8. Prepared By (Medical Unit Leader)	9. Date/Time	10. Reviewed By (Safety Officer)	11. Date/Time
MICHAEL PORTER MEDL(T)	08/11/2015 2100	STEVE RAMEKERS SOFR	08/11/2015 2100

MEDICAL PLAN (ICS 206)

12. Medical Incident Procedures

FOR ALL MEDICAL EMERGENCIES: IDENTIFY ON SCENE INCIDENT COMMANDER BY NAME AND POSITION AND ANNOUNCE "MEDICAL EMERGENCY" TO INITIATE RESPONSE FROM IMT COMMUNICATIONS/DISPATCH.

Medical Incident Report

Use items one through nine to communicate situation to communications/dispatch.

1. CONTACT COMMUNICATIONS/DISPATCH

Ex: "Communications: Div. Alpha. Stand-by for Priority Medical Incident Report." (If life threatening, request designated frequency be cleared for emergency traffic.)

2. INCIDENT STATUS: Provide incident summary and command structure.

Nature of Injury/Illness		<i>Describe the injury (Ex: Broken leg with bleeding)</i>
Incident Name		<i>Geographic Name + "Medical" (Ex: Trout Meadow Medical)</i>
Incident Commander		<i>Name of IC</i>
Patient Care		<i>Name of Care Provider (Ex: EMT Smith)</i>

3. INITIAL PATIENT ASSESSMENT:

Complete this section for each patient. This is only a brief, initial assessment. Provide additional patient info after completing this 9 Line Report.

Number of Patients:	Male / Female	Age:	Weight:
Conscious?	<input type="checkbox"/> YES	<input type="checkbox"/> NO = MEDEVAC!	
Breathing?	<input type="checkbox"/> YES	<input type="checkbox"/> NO = MEDEVAC!	
Mechanism of Injury: <i>What caused the injury?</i>			
Lat/Long (Datum WG884) Ex: N 40° 42.45' x W 123° 03.24'			

4. SEVERITY OF EMERGENCY, TRANSPORT PRIORITY

SEVERITY	TRANSPORT PRIORITY
<input type="checkbox"/> URGENT-RED Life threatening injury or illness. Ex: Unconscious, difficulty breathing, bleeding severely, 2 - 3 degree burns more than 4 palm sizes, heat stroke, disoriented.	Ambulance or MEDEVAC helicopter. Evacuation need is IMMEDIATE .
<input type="checkbox"/> PRIORITY-YELLOW Serious Injury or illness. Ex: Significant trauma, not able to walk, 2 - 3 degree burns not more than 1-2 palm sizes.	Ambulance or consider air transport if at remote location. Evacuation may be DELAYED .
<input type="checkbox"/> ROUTINE-GREEN Not a life threatening injury or illness. Ex: Sprains, strains, minor heat-related illness.	Non-Emergency. Evacuation considered Routine of Convenience .

5. TRANSPORT PLAN:

Air Transport: (Agency Aircraft Preferred)			
<input type="checkbox"/> Helispot	<input type="checkbox"/> Short-haul/Hoist	<input type="checkbox"/> Life Flight	<input type="checkbox"/> Other
Ground Transport:			
<input type="checkbox"/> Self-Extract	<input type="checkbox"/> Carry-Out	<input type="checkbox"/> Ambulance	<input type="checkbox"/> Other

6. ADDITIONAL RESOURCE/EQUIPMENT NEEDS:

<input type="checkbox"/> Paramedic/EMT(s)	<input type="checkbox"/> Crew(s)	<input type="checkbox"/> SKED/Backboard/C-Collar
<input type="checkbox"/> Burn Sheet(s)	<input type="checkbox"/> Oxygen	<input type="checkbox"/> Trauma Bag
<input type="checkbox"/> Medication(s)	<input type="checkbox"/> IV/Fluid(s)	<input type="checkbox"/> Cardiac Monitor/AED
<input type="checkbox"/> Other (i.e. splints, rope rescue, wheeled litter)		

7. COMMUNICATIONS:

Function	Channel Name/Number	Receive (Rx)	Tone/NAC *	Transmit (Tx)	Tone/NAC *
Ex: Command	Forest Rpt, Ch. 2	168.3250	110.9	171.4325	110.9
COMMAND					
AIR-TO-GRND					
TACTICAL					

*(NAC for digital radio system)

8. EVACUATION LOCATION:

Lat/Long (Datum WG884) EX: N 40 42.45' x W 123 03.24'	
Patient's ETA to Evacuation Location:	
Helispot/Extraction Size and Hazards:	

9. CONTINGENCY:

Considerations: If primary options fail, what actions can be implemented in conjunction with primary evacuation method? Be thinking ahead...

REMEMBER:


- Confirm ETA's of resources ordered
- Act according to your level of training
- Be Alert. Keep Calm. Think Clearly. Act Decisively.

INCIDENT RADIO COMMUNICATIONS PLAN (ICS 205)

1. Incident Name:		2. Date/Time Prepared:		3. Operational Period:	
R-1 DODGE		Date: 08/10/2015 Time: 1925		Date/Time From: 08/12/2015 0600 Date/Time To: 08/12/2015 1800	
				DAY WED WED	

4. Basic Radio Channel Use:										
Zone Group	Ch #	Function	Channel Name/Trunked Radio System Talkgroup	Assignment	RX Freq	RX Tone/NAC	TX Freq	TX Tone/NAC	Mode (A, D, or M)	Remarks
	1	TACTICAL	NIFC TAC 1	DIV A	168.0500	156.7	168.0500	156.7	A	
	2	TACTICAL	NIFC TAC 2	DIV M	168.2000	156.7	168.2000	156.7	A	
	3	TACTICAL	NIFC TAC 3	DIV Q	168.6000	156.7	168.6000	156.7	A	
	4	TACTICAL	NIFC TAC 4	DIV Y	166.7250	156.7	166.7250	156.7	A	
	5	TACTICAL	NIFC TAC 5	DIV T	166.7750	156.7	166.7750	156.7	A	
	6	TACTICAL	NIFC TAC 6	UNASSIGNED	168.2500	156.7	168.2500	156.7	A	
	7	TACTICAL	NIFC TAC 7	UNASSIGNED	166.6750	156.7	166.6750	156.7	A	
	8	TACTICAL	NIFC TAC 8	MEDICAL	154.2650	0000	154.2650	0000	A	
	9	TACTICAL	NIFC TAC 9	UNASSIGNED	169.2000	156.7	169.2000	156.7	A	
	10	COMMAND	NIFC COMMAND 6	COMMAND ALL	168.4750	0000	173.8125	156.7	A	
	11	COMMAND	NIFC CMD DIR	ALL DIVISIONS	168.4750	0000	168.4750	156.7	A	
	12	COMMAND	BLM RPT	COMMAND BACKUP	172.8125	0000	166.3125	167.9	A	
	13	COMMAND	NIFC COMMAND 8	ALL DIVISIONS	169.5375	0000	164.7125	156.7	A	
	14	AIR TO GROUND	AIR GROUND	ALL DIVISIONS	164.8375	0000	164.8375	0000	A	
	15	COMMAND	NIFC COMMAND 10	COMMAND ALL	170.4125	0000	165.9625	156.7	A	
	16	AIR GUARD	AIR GUARD	ALL DIVISIONS	168.6250	0000	168.6250	110.9	A	

5. Special Instructions:

6. Prepared By	(Communications Unit Leader)	Name: DOWNING
ICS 205	IAP Page	Signature:  Date/Time: 08/10/2015 1925

AIR OPERATIONS SUMMARY (ICS 220)

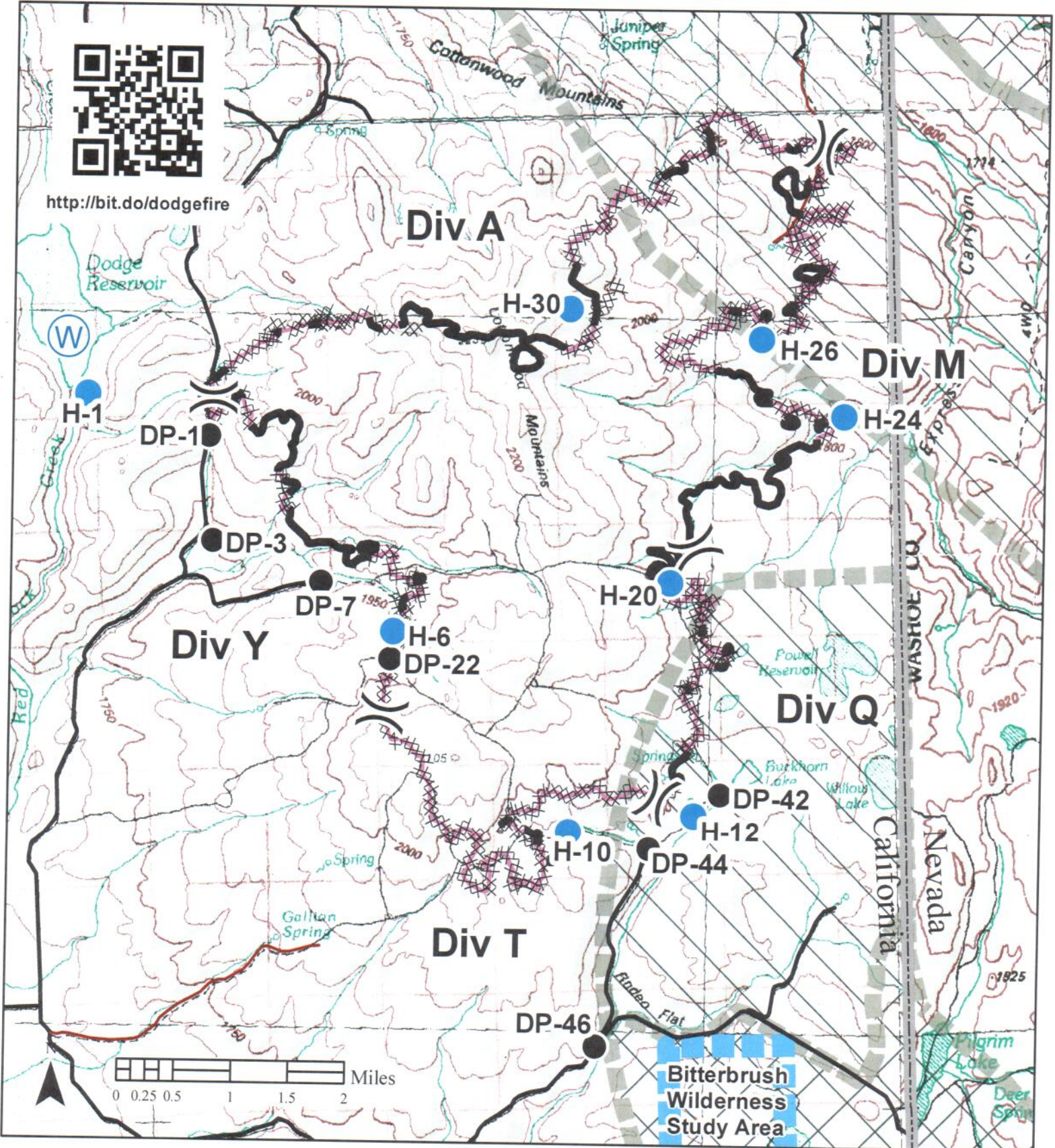
1. Incident Name:		2. Operational Period: DAY		3. Sunrise: Sunset:	
R-1 DODGE		Date/Time From: 08/12/2015 0600 WED		Date/Time To: 08/12/2015 1800 WED	
4. Remarks (Safety Notes, Hazards, Air Op Special Equipment, etc.)		5. Ready Alert Aircraft:			
Hazard: Military aircraft operating unannounced Herlong Military Base: C-130, C-5, C-17(s) VLAT and C-130 MAFFS being used. Hazard: 1 MET Tower (Windmill) Lat: Degrees 40 57 57.82N Long: Degrees 120 03 53.01W		Medicac: HELICOPTER 3AE New Incident:			
7. Personnel:		8. Frequencies:		9. Fixed-Wing	
	Name:	Phone Number:	Air/Air Fixed-Wing	AM (Tone)	FM (Tone)
AIR OPERATIONS BRANCH DIRECTOR	CHRIS INGRAM	(775) 240-2289	Air/Air Rotary-Wing - Flight Following	135.025 000.0	169.8250
AIR SUPPORT GROUP SUPERVISOR			Air/Ground		164.8375 000.0
AIR TACTICAL GROUP SUPERVISOR	DICK STILLAWA	(530) 604-2861	nifc Command 6		168.4750 156.7
HELICOPTER COORDINATOR			Deck Coordinator		
HELIBASE MANAGER	LUCAS RHEA	(702) 556-2255	Take-Off & Landing Coordinator		
			Air Guard		168.625 110.9
11. Prepared by: Name: CHRIS INGRAM			Signature:		
ICS 220, Page 1 of 2			Date/Time: 08/11/2015 0000		
			Position/Title: SFIMT RASNER AOB		

AIR OPERATIONS SUMMARY (ICS 220)

1. Incident Name:		2. Operational Period: DAY		3. Sunrise:		Sunset:	
R-1 DODGE		Date/Time From: 08/12/2015 0600	WED	Date/Time To: 08/12/2015 1800	WED	0608	2007
10. Helicopters (use additional sheets as necessary):							
FAA #	Category/Kind/Type	Make/Model	Base	Available	Start	Remarks	
3AE	TYPE 3	AS350 B3E	LAS VEGAS	0800	0900	Dodge Fire Helibase. deg 40 53.43, deg 120 11.99	
1BH	TYPE 3	AS350 B3E	RAVENDALE HELIBASE		0900	Ravendale Helibase: Deg 40 43.924, Deg 120 19.010. Available upon request.	
12. Task/Mission/Assignment (category/kind/type and function includes: air tactical, reconnaissance, personnel transport, search and rescue, etc.):							
Category/Kind/Type and Function	Name of Personnel or Cargo (if applicable) or Instructions for Tactical Aircraft			Mission Start	Fly From	Fly To	
11. Prepared by: Name: CHRIS INGRAM							
ICS 220, Page 2 of 2				Position/Title: SFIMT RASNER AOBD		Signature:	
				Date/Time: 08/11/2015 0000			



<http://bit.do/dodgefire>



Dodge Fire
IAP Map
 CA-NOD-003806
 8/12/2015
 10,570 ac

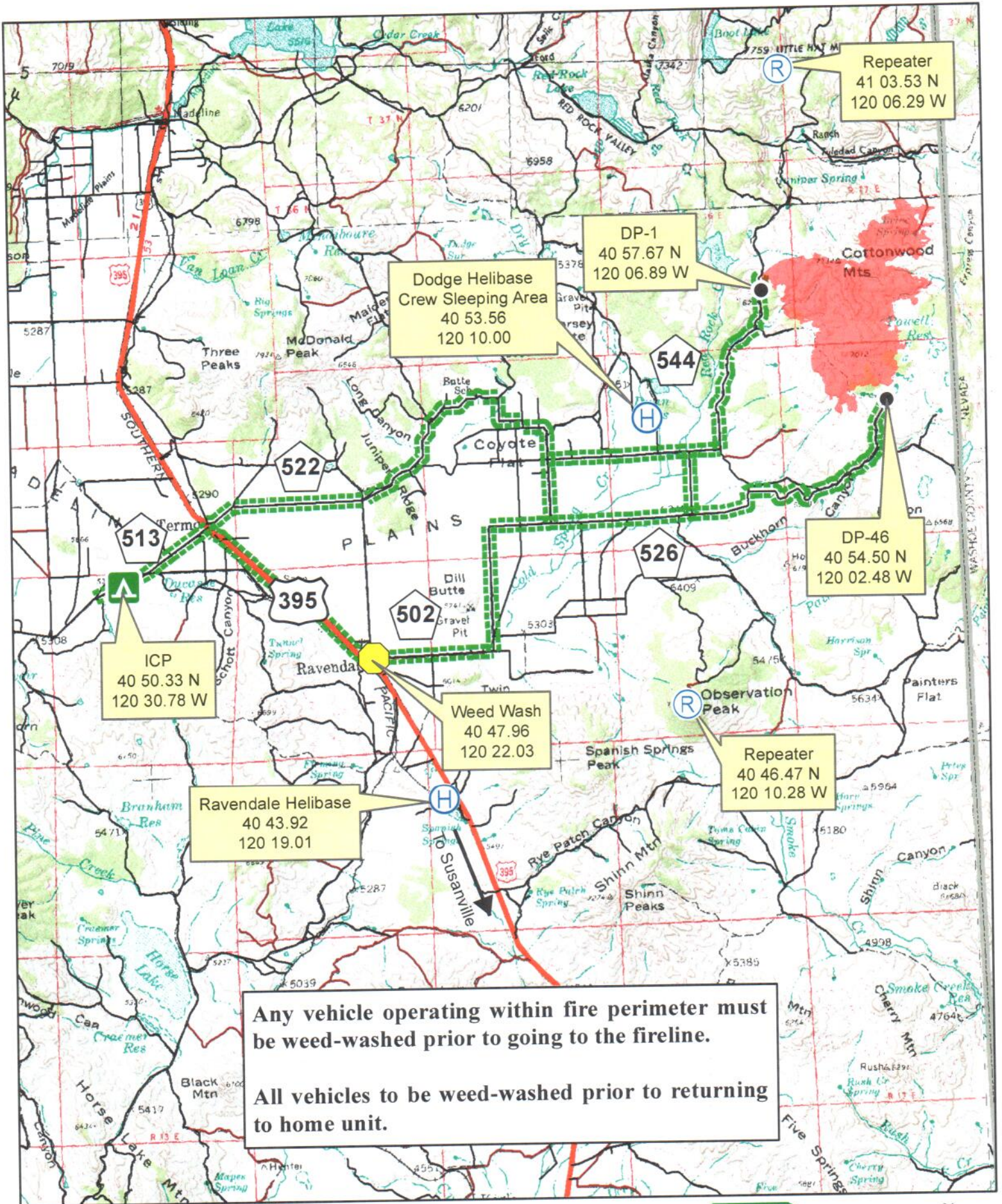


Nate Rasner
 Sierra Front IMT



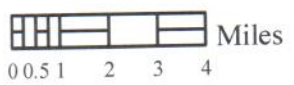
- Legend**
- Uncontrolled Fire Edge
 - Completed Dozer Line
 - Completed Line
 - Drop Point

- Helispot
- Water Source
- FIAT Suppression Priorities**
- High
- Moderate



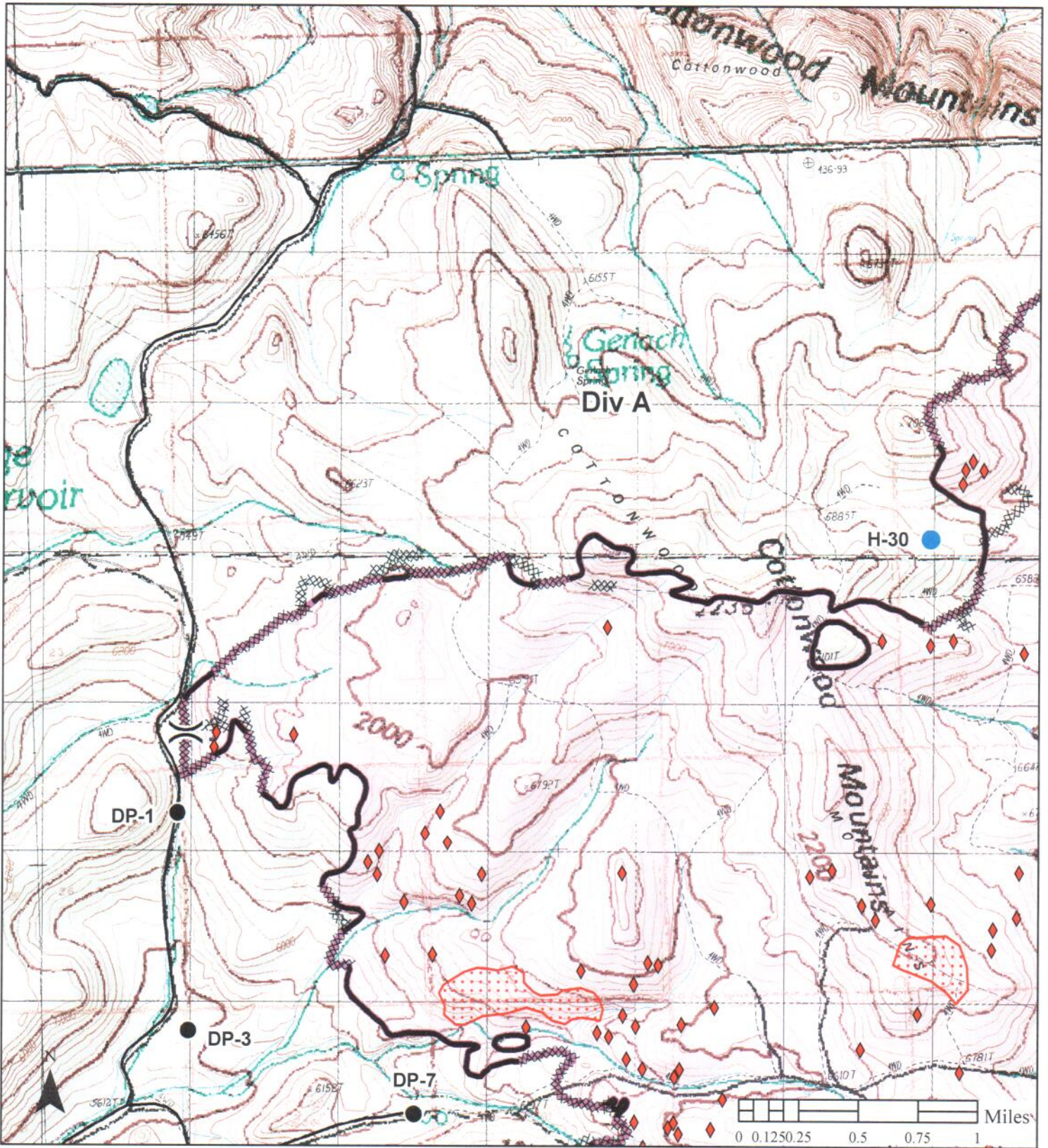
Any vehicle operating within fire perimeter must be weed-washed prior to going to the fireline.

All vehicles to be weed-washed prior to returning to home unit.



Dodge Fire Transport Map
 CA-NOD-003806 8/12/2015





Dodge Fire
IAP Map
 CA-NOD-003806
 8/12/2015
 10,570 ac

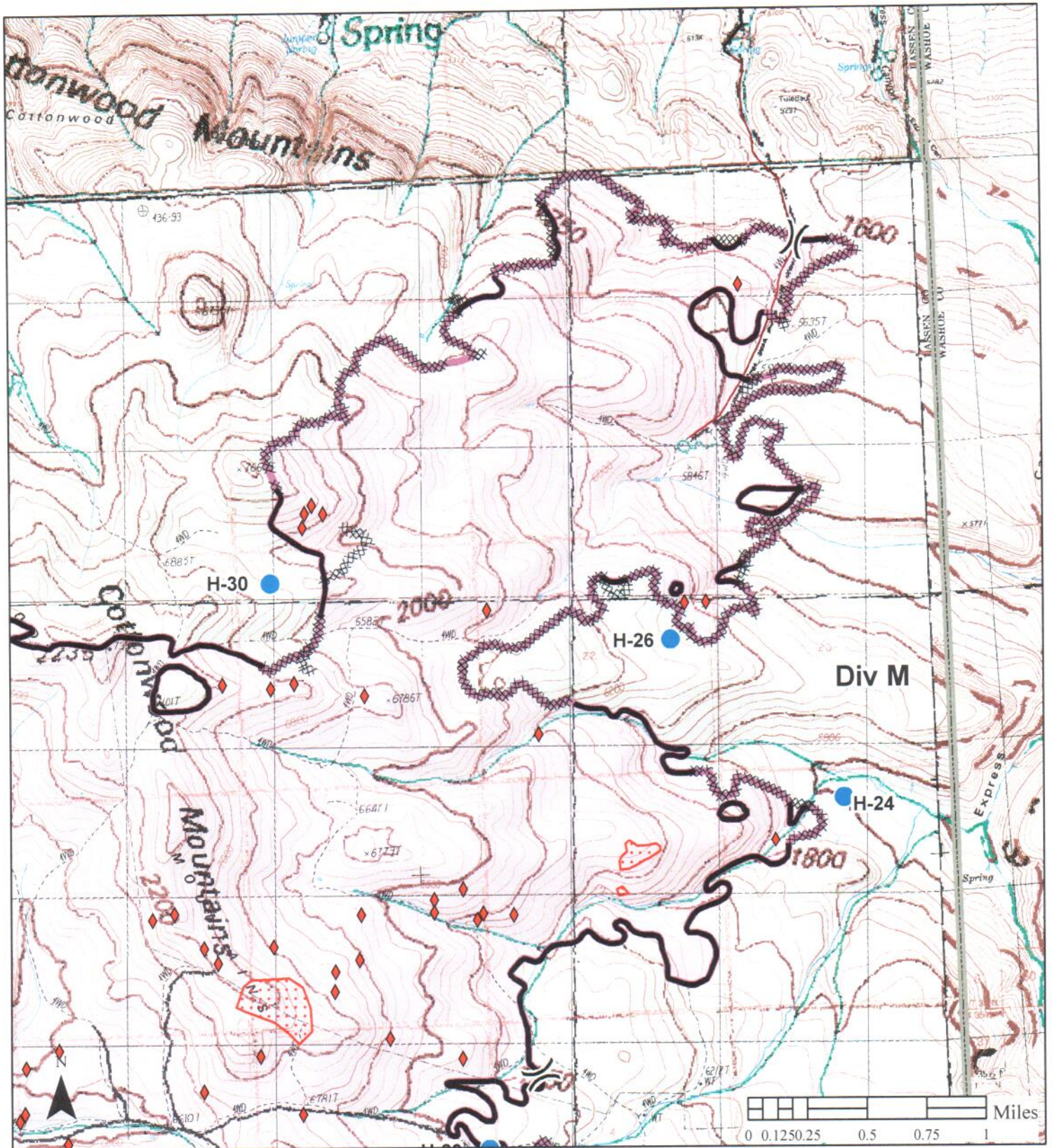


Nate Rasner
 Sierra Front IMT

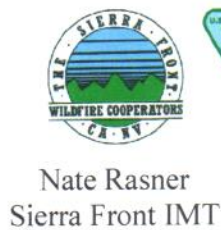


Legend

- Uncontrolled Fire Edge
- Completed Dozer Line
- Completed Line
- Drop Point
- Helispot
- Water Source
- Infrared Heat Sources**
 - Isolated Heat
 - Scattered Heat

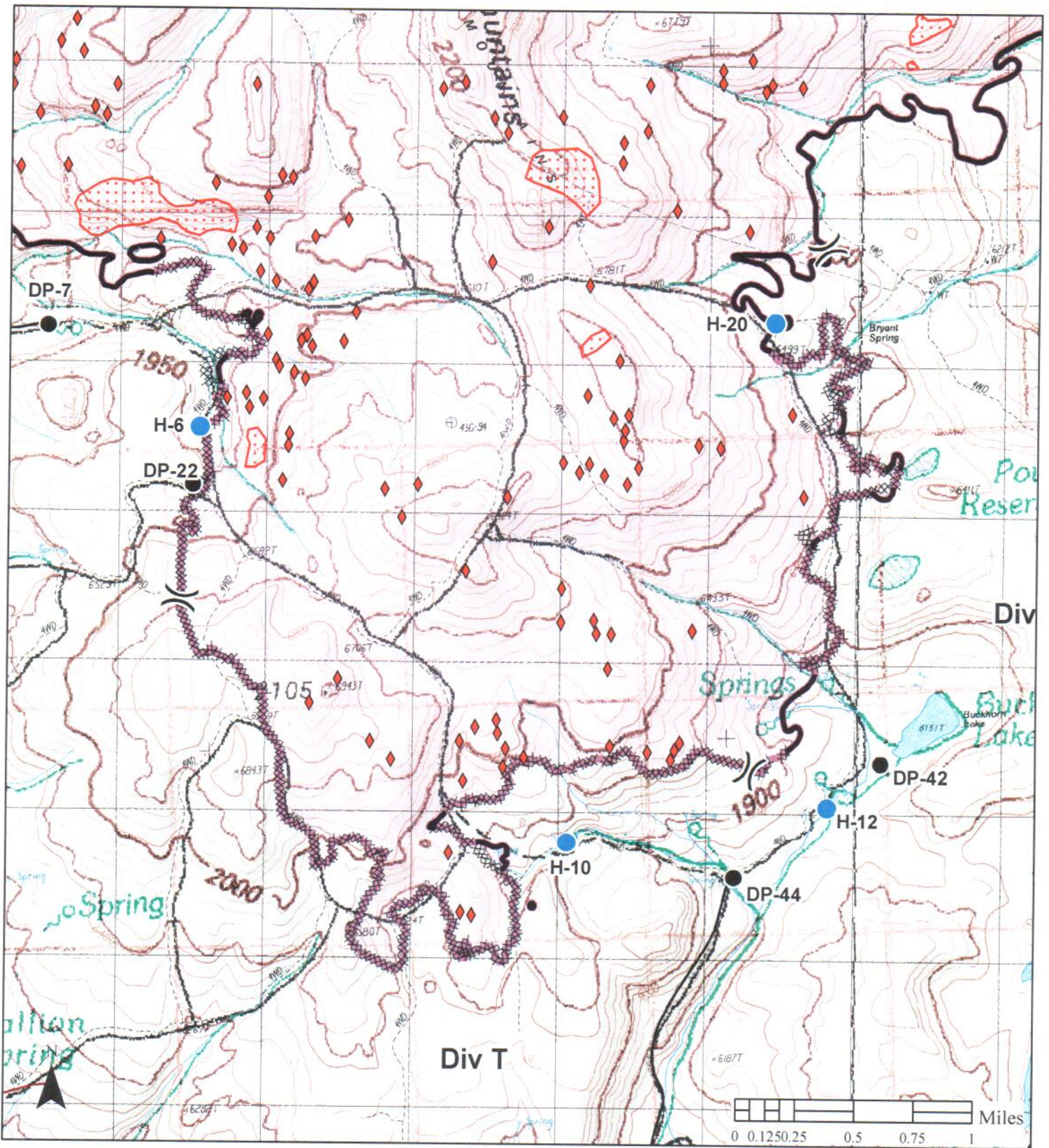


Dodge Fire
IAP Map
 CA-NOD-003806
 8/12/2015
 10,570 ac



Legend

- Uncontrolled Fire Edge
- Completed Dozer Line
- Completed Line
- Drop Point
- Helispot
- Water Source
- Infrared Heat Sources**
 - Isolated Heat
 - Scattered Heat



Dodge Fire
IAP Map
 CA-NOD-003806
 8/12/2015
 10,570 ac



Nate Rasner
 Sierra Front IMT



- Legend**
- Uncontrolled Fire Edge
 - Completed Dozer Line
 - Completed Line
 - Drop Point
 - Helispot
 - Water Source
 - Infrared Heat Sources**
 - Isolated Heat
 - Scattered Heat

