

# **Incident Action Plan**

## **Saddle Fire**

**CA-SHF-001371**

**P5JR7U (0514)**

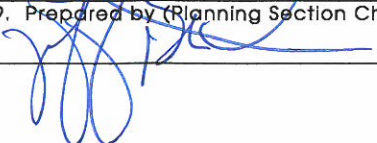
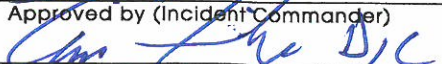


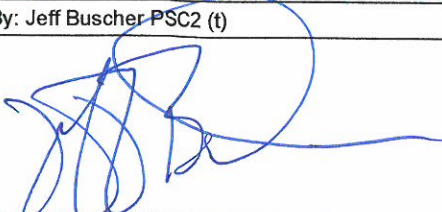
**NIGHT SHIFT**

**06/13/15 – 06/14/15**

**1800 - 0600**



<b>INCIDENT OBJECTIVES</b>	1. Incident Name <b>Saddle</b>	2. Date 6/13/2015	3. Time 13:20
4. Operational Period 06/13/2015 - 06/14/2015 1800 - 0600			
5. General Control Objectives for the Incident (Include alternatives)  <b>MANAGEMENT OBJECTIVES</b>  <ul style="list-style-type: none"> <li>• Utilize strategies and tactics that provide for firefighter and public safety to the extent possible.</li> <li>• Reduce firefighter exposure by avoiding large, long duration and costly fire operations.</li> <li>• Utilize local resource specialist and Native American representative to identify and protect sensitive sites when possible.</li> </ul> <b>OPERATIONAL OBJECTIVES</b>  <ul style="list-style-type: none"> <li>• Protect "Wild and Scenic" river corridor by keeping fire west of the Trinity River.</li> <li>• Provide for the protection of Manzanita Ranch by keeping fire to the south.</li> <li>• Take advantage of natural and man-made barriers by utilizing 3N14 road systems to the south of fire.</li> <li>• Utilize terrain features on Lake Mountain on the west side of fire.</li> </ul>			
6. Weather Forecast for Period  <b>See attached forecast</b>			
7. General Safety Message  <b>See attached safety message</b>			
8. Attachments (mark if attached)			
<input checked="" type="checkbox"/> Organization List - ICS 203 <input checked="" type="checkbox"/> Medical Plan - ICS 206 <input checked="" type="checkbox"/> Weather <input checked="" type="checkbox"/> Div. Assignment Lists - ICS 204 <input type="checkbox"/> Incident Map <input checked="" type="checkbox"/> Safety Message <input checked="" type="checkbox"/> Communications Plan - ICS 205 <input type="checkbox"/> Traffic Plan <input checked="" type="checkbox"/> LCES Worksheet			
9. Prepared by (Planning Section Chief) 		10. Approved by (Incident Commander) 	

ORGANIZATION ASSIGNMENT LIST		9. Operations Section	
<b>1. Incident Name</b>		Day Ops Chief	Daren Dalrymple / Jason Withrow (t)
Saddle		Night Ops Chief	Eric Petterson
<b>2. Date</b>	<b>3. Time</b>	Planning Ops	Dan George / Scott Lucas (t)
06/13/2015	13:48	<b>a. Branch I – Division/Groups</b>	
<b>4. Operational Period</b>		Branch	
06/13/2015 – 06/14/2015 1800 - 0600		Division/Group	A Tom Browning
<b>Position</b>	<b>Name</b>	Division/Group	C / M John Goss
<b>5. Incident Commander and Command Staff</b>		Division/Group	S / Z Jeff Dupras
Incident Commander	Joe Molhoek / Rick Young (t)	Division/Group	
Deputy IC	Tim Fike	Division/Group	
Liaison	Dan George	Division/Group	
Safety Officer	T. O'Connell / S. Charley / C. Frank Charlotte Jordan		
Information Officer	Adrienne Freeman / Corey Wilford	<b>b. Branch II – Division/Groups</b>	
		Branch	
<b>6. Agency Representative</b>		Division/Group	
<b>Agency</b>	<b>Name</b>	Division/Group	
Agency Admin	Terri Simon Jackson	Division/Group	
Agency Admin Rep	Tom Hall	Division/Group	
Lead Resource Advisor	Brad Rust	Division/Group	
Cal Fire	Nick Truax	Division/Group	
Hyampom Volunteer FD	Joe Watkins	<b>c. Branch III – Division/Groups</b>	
Trinity County Sheriff	Bruce Haney	Branch	
PG&E	Joe Ceraceri	Division/Group	
Trinity County Advisor	Roger Jaeger	Division/Group	
		Division/Group	
		Division/Group	
		Division/Group	
<b>7. Planning Section</b>		<b>d. Air Operations Branch</b>	
Chief	Christie Neill	Air Operations Branch Director	Dennis Kuster
Deputy	Jeff Buscher (t)	Air Support Group Supervisor	Dick Stiliha
Resources Unit	Duane Miller / Robert Lim / Mike V. (t)	Air Tactical Group Supervisor	Mark Noonez
Situation Unit	Matt Brown / Keith Flood (t) Nish van Hees (t)	Helibase Manager	Eric Potter
Documentation Unit	Fire Dawg		
Demobilization Unit			
Fire Behavior Unit	Ken Larson / Taro Pusino	<b>10. Finance Section</b>	
Incident Meteorologist	Mike Smith	Chief	Beth Lopez
Technical Specialist	Shane Neal	Personnel Time Unit	Penny Portluck
Training Specialist	Robert Reville	Equipment Time Unit	Juanita Cortez
GISS	Melanie Kerr / Andy Suppinger	Cost Unit	
HRSP	Francis Lindquist	Compensation / Claim Unit	Tina Kennedy
Status Check-In	Stacey Mikulovsky / John Donahue (t)	IBA	Anna Arnold
<b>8. Logistics Section</b>			
Chief	Mike Heckendorn		
Deputy	Aaron Lowe (t)		
Supply Unit	Tracey Valentine	Prepared By: Jeff Buscher PSC2 (t)	
Facilities Unit	Ric Crowther / Bill Patten		
Ground Support Unit	John Fell		
Communications Unit	Jim Lewis / Don Stoner		
Medical Unit	Patrick Young		
Food Unit	Kevin Browning		



## **INCIDENT Weather Forecast**

**FORECAST NO:** 2

**NAME OF FIRE:** Saddle Fire

**PREDICTION FOR:** Saturday Night **SHIFT**

**UNIT:** SHF

**SHIFT DATE:** June 13, 2015

**SIGNED:** Mike Smith

**TIME AND DATE**

**FORECAST ISSUED:** 1100 June 13, 2015

**Incident Meteorologist**

---

### **WEATHER DISCUSSION**

Not too much change from Friday night with light east winds developing by early evening over ridges and only moderate RH recovery. Stronger winds to the north and at higher elevations are not likely to influence this area's lower elevations. Valley inversions will settle in quickly after sunset and last through the night with light downslope winds on the slopes after sunset. A weak upper trough passing to the north will bring a slight cooling trend Sunday and Monday as onshore flow is increased. Daytime and nighttime humidity should moderate as well.

---

### **WEATHER FORECAST:**

**WEATHER:** Fair skies with smoke settling in quickly after sunset.

**TEMPERATURES:** Minimum temperatures 55 to 59

**HUMIDITY:** Maximum humidity recovery 60-65%.

**20 FT WINDS:**

**RIDGETOP** - Northwest to 4 mph gusts to 10 mph in the late afternoon becoming light mainly east to 2 mph after about 2000.

**SLOPE/VALLEY** - West to northwest winds 2-5 mph with occasional gusts to 12 mph through about 1900-2000 then becoming light mainly downslope to downcanyon to 3 mph through the night.

**STABILITY/INVERSION:** Inversions setting in shortly after sunset around 2100 then holding in through the night.

---

**FORECAST FOR SUNDAY:** Morning smoke in the valleys, Otherwise Sunny. Max temperatures 87 to 92. Minimum humidity 16 to 21%. Ridge winds light east in the morning becoming west to northwest 2-5 mph gusts to 10 mph in the afternoon. Slope winds light in the morning becoming variable mostly upslope to upcanyon to 5 mph. Mostly westerly winds on the upper slopes. Watch for downslope transitions late afternoon and evening.

---

**Outlook for Monday:** Fair skies. Morning lows in the 50s. Daytime highs 85-90. Morning humidity recovery 70-80%. Daytime minimum RH 20-25%. West to northwest winds on the ridges to 5 mph with gusts to 10 mph in the afternoon. Mainly light downslope in the morning becoming upslope to upcanyon to 5 mph by late morning. Watch for transition to downslope winds late afternoon and early evening.

---

**EXTRA INFORMATION:** Underwood Raws (2mi NE of fire at 0523. Temperature 60 RH 53%  
Wind downslope to 2 mph.

Sunrise 5:42 Sunset 8:45

# FIRE BEHAVIOR FORECAST

<b>FORECAST NUMBER: 4</b>	<b>TYPE OF FIRE: Wildland Fire</b>
<b>FIRE NAME: Saddle</b>	<b>OPERATIONAL PERIOD: Night 1800-0600, 6/13-14, 2015</b>
<b>DATE ISSUED: June 13, 2015</b>	<b>TIME ISSUED: 1100</b>
<b>UNIT: Shasta-Trinity NF</b>	<b>SIGNED: /s/ Taro Pusina, FBAN(t)</b>

## INPUTS

**WEATHER SUMMARY:** \*\*\* See attached Fire Weather Forecast\*\*\*

### Discussion:

High pressure system persists with not much change tonight from Friday night. Expect light east winds and moderate relative humidity recoveries. Winds stronger out of the north at higher elevations but are not likely to impact the majority of the fire area. Light downslope winds after sunset.

**Weather:** Fair skies and smokey.

**Min. Temp:** 55° - 59°

**Max. RH:** 60 - 65%

**Winds:** Eye Level: Light slope induced winds tonight. Upslope and/or north/northwest until dark, then light downslope. 20 ft.: Becoming east up to 2 mph after 2000.

## FIRE BEHAVIOR

**GENERAL:** ERC of 57 in Hayfork is above average and approaching the historic high for this time of year.

Several years of drought have caused significant soil and live and dead fuel moisture deficit. Conditions are critically dry and northern California is roughly a month ahead of a "normal" fire season. The fire should burn actively throughout the night with only moderate night time fuel moisture RH recovery of about 60-65%. Fire is burning mostly in a 10 year old wildfire footprint in brush, heavy downed fuel and snags. Other vegetation includes hardwood and conifer leaf litter. 1000 hr. fuel moisture is around 10% and live brush fuel moisture is about 125%.

**Before Dark:** Expect moderate to high fire behavior, worst case scenario: Flame lengths 4-8' and maximum rates of spread 10-15 ch/hr for headfire. Isolated torching and medium duration uphill runs are possible with up to ½ mi spotting with a probability of ignition of 50-60%.

**After Dark:** Low to moderate activity with 1-3' flame lengths. Rate of spread 1-2 ch/hr. Isolated torching with short range spotting possible throughout the evening. Probability of ignition down to 20 -30%.

### SPECIFIC FIRE BEHAVIOR:

**Divisions A/Z:** Unlined portions of slopover in Saddle Gulch will burn actively throughout the night, particularly when down canyon winds kick in sometime after sunset. Watch for rollout downslope toward the South Fork Trinity River. Dead downed fuel is very dry and will be the primary carrier of the fire. Snags can also assist downslope spread through spotting.

**Division C/M:** Watch for flareups on unlined portions of the division. Expect moderate fire activity in hardwood and conifer leaf litter throughout the night. Fire should continue to back and flank into Monroe Creek with short upslope runs possible until downcanyon winds kick in after dark.

**Division S:** Expect winds mostly at your back from the north and west until dark. After dark, expect light and variable winds near the ridge between Shasta Trinity and Six Rivers Forest with mostly low fire behavior.


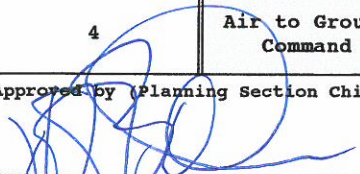
## AIR OPERATIONS


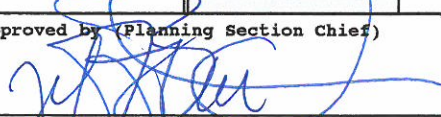
Poor visibility under an inversion during nighttime hours.

8/13 Sunset: 20:45      8/14 Sunrise: 05:42

## SAFETY

- Hot and dry conditions and poor to moderate RH recovery are leading to active burning throughout the night.
- Watch for wind shifts if conducting indirect fireline construction which could turn a slow moving backing or flanking into a fast moving headfire. Evaluate time to reach safety zones and escape routes and continue to re-evaluate as weather and fire behavior conditions change throughout the shift.

<b>DIVISION ASSIGNMENT LIST</b>		1. Branch	2. Division/Group <b>A</b>				
3. Incident Name <b>Saddle</b>		4. Operational Period <b>NIGHT OPERATIONS</b> Date: <b>06/13/15 - 06/14/15</b> Time <b>1800-0600</b>					
5. Operations Personnel							
Operations Chief	<b>Eric Petterson</b>		Division/Group Supervisor	<b>Tom Browning</b>			
Branch Director			Air Operations				
6. Resources Assigned this Period							
Strike Team/Task Force/ Resource Designator	Leader	Last Shift	Number Persons	Trans. Needed	Drop Off PT./Time	Pick Up PT./Time	
HC1 Shasta Lake IHC (C-8)	Donovan Lee	6/24	20	N	DP 90 / 1900	0600	
HC2IA Firestorm 1 (C-26)	Rick Sandidge	6/22	20	N	DP 90 / 1900	0600	
ST 4600C (E-75)	James Thornock Scott Soden (t)	6/24	27	N	DP 90 / 1900	0600	
DOZ2 Cattaneo w/LOWB (E-8) 24HR	Gary Kushman	6/23	1	N	DP 90 / 1900	0600	
DOZ2 Strieff w/LOWB (E-86) 24HR	Robert Strieff	6/26	1	N	DP 90 / 1900	0600	
DOZ2 Ben's w/LOWB (E-56) 24HR	Boise Lawrence	6/26	1	N	DP 90 / 1900	0600	
DOZ2 Hat Creek Const. w/LOWB (E-57) 24HR	Steve Forde	6/26	1	N	DP 90 / 1900	0600	
WT2 Cattaneo (E-5) 24HR	Matthew Post	6/23	1	N	DP 90 / 1900	0600	
WT2 Cattaneo (E-7) 24HR	Geno Smitz	6/23	1	N	DP 90 / 1900	0600	
TFLD (O-39)	Bernie Quinonez	6/26	1	N	DP 90 / 1900	0600	
SOF2 (O-84)	Charlotte Jordan	6/25	1	N	DP 90 / 1900	0600	
FEMP (O-64)	Joe Perez	6/25	1	N	DP 90 / 1900	0600	
FEMT (O-66)	Jesse Hodorowski	6/25	1	N	DP 90 / 1900	0600	
7. Control Operations							
<ul style="list-style-type: none"> <li>• Hold and improve existing control lines.</li> <li>• Complete control lines where needed.</li> <li>• Initiate mop-up to 50'.</li> </ul>							
8. Special Instructions							
<ul style="list-style-type: none"> <li>• Identify potential medivac sites.</li> <li>• Map all firing and turn into Situation Unit daily.</li> </ul>							
9. Division/Group Communication Summary							
Function	Frequency	System	Channel	Function	Frequency	System	Channel
Command	RX 168.7000 TX 170.9750	NIFC C1	1 Tone 1	ALT CMD	RX 171.5750 TX 169.1000	Forest RPTR Net	14 Tone 4
Tactical Division/Group	RX 168.0500 TX 168.0500	NIFC TAC1	4	Air to Ground Command	RX 164.7500 TX 164.7500	A/G CMD	9
Prepared by (Resource Unit Leader)			Approved By (Planning Section Chief)		Date	Time	
					6/13/2015	13:16	

<b>DIVISION ASSIGNMENT LIST</b>			1. Branch		2. Division/Group <b>C / M</b>			
3. Incident Name <b>Saddle</b>			4. Operational Period <b>NIGHT OPERATIONS</b> Date: <b>06/13/15 - 06/14/15</b> Time <b>1800-0600</b>					
5. <b>Operations Personnel</b>								
Operations Chief		<b>Eric Petterson</b>		Division/Group Supervisor		<b>John Goss</b>		
Branch Director				Air Operations				
6. <b>Resources Assigned this Period</b>								
Strike Team/Task Force/ Resource Designator		Leader		Last Shift	Number Persons	Trans. Needed	Drop Off PT./Time	Pick Up PT./Time
HC1 Big Bear IHC (C-13)		Frank Esposito		6/24	20	N	DP 70 / 1900	0600
HC1 Lone Peak IHC (C-20)		Kris Bruington		6/26	22	N	DP 70 / 1900	0600
ENG3 E333 (E-1)		Stephanie Gleason		6/23	5	N	DP 70 / 1900	0600
ENG3 E353 (E-2)		Phillip Hoover		6/24	5	N	DP 70 / 1900	0600
DOZ2 Pro-Dump w/LOWB (E-51) 24HR		Ed Smith		6/25	1	N	DP 70 / 1900	0600
DOZ2 Pro-Dump w/LOWB (E-59) 24HR		Todd McCullough		6/25	1	N	DP 70 / 1900	0600
7. Control Operations								
<ul style="list-style-type: none"> <li>Patrol and hold existing control lines.</li> <li>Continue line construction toward Division M/S break.</li> </ul>								
8. Special Instructions								
<ul style="list-style-type: none"> <li>Identify potential medivac sites.</li> <li>Map all firing and turn into Situation Unit daily.</li> </ul>								
9. <b>Division/Group Communication Summary</b>								
Function	Frequency	System	Channel	Function	Frequency	System	Channel	
Command	RX 168.7000 TX 170.9750	NIFC C1	1 Tone 1	ALT CMD	RX 171.5750 TX 169.1000	Forest RPTR Net	14 Tone 4	
Tactical Division/Group	RX 168.6000 TX 168.6000	NIFC TAC3	5	Air to Ground Command	RX 164.7500 TX 164.7500	A/G CMD	9	
Prepared by (Resource Unit Leader)			Approved by (Planning Section Chief)			Date	Time	
						6/13/2015	13:16	





# AIR OPERATIONS SUMMARY

Prepared By: Dennis Kuster

Prepared Date: 6/13 /2015

Prepared Time: 14:40

<b>1. INCIDENT NAME:</b> Saddle---NIGHT SHIFT	<b>2. OPS PERIOD DATE:</b> 6/13/2015	<b>START TIME:</b> 2000	<b>END TIME:</b> 0800	<b>SUNRISE:</b>	<b>SUNSET:</b>
<b>3. REMARKS (Safety Notes, Hazards, Air Operations, Special Equipment, etc.):</b> Watch for wires in river canyon. Beware of rapidly changing VFR conditions due to smoke. Watch for large power lines on east side of fire.					
<b>4. READY ALERT AIRCRAFT MEDEVAC-</b> ORC-1 SEE SPECIAL DIRECTIONS FOR DISPATCH PROCEDURES			<b>5. TFR #:</b> 5/7455 8,000' MSL 5NM Radius		

6. PERSONNEL NAME		PHONE #	7. FREQUENCIES		AM	FM	8. FIXED-WING- Type/ Make-Model/ N#/ Base	
AOBD	Dennis Kuster	209 352-0855	AIR/ AIR FW	118.0250			AIRTANKERS -	Ordered by ATGS
ASGS	Chris Gamble	925-407-5173	AIR/ AIR RW	118.0750			LEAD PLANES-	Ordered by ATGS
ATGS	Dick Stillha	530-604-2861	AIR/ AIR RW- FF			172.1375		
ATGS	Mark Nunez	805 895 6620						
ASGS(T)	Curt Warner	805-478-1231	A/G Command			164.750		
			A/G Tactical			169.150		
HEB2	Eric Potter	530-957-0681	COMMAND	rx	See comm	Plan	SHF ECC Aircraft Dispatcher	530-226 2400
HEB1(T)				tx			OTHER FW AIRCRAFT-	
Helibase			DECK			163.100		
			TOLC					
Air Ops Desk			AERIAL FIRING					

**9. HELICOPTERS (Use Additional Sheets as Necessary)**

FAA N#	T	MAKE/ MODEL	BASE	AVAIL	START	REMARKS	FAA N#	T	MAKE/ MODEL	BASE	AVAIL	START	REMARKS
ORC-1	2	Bell 412	Weaverville	2000	0800			Y	July Complex				
		SEE ORDERING PROCEDURES											

10. TASK/ MISSION/ ASSIGNMENT (Type/ function includes: Air Tactical, Retardant, Recon, Personnel Transport, Bucket Operations, SAR, etc.)		MISSION START	FLY FROM	FLY TO
TYPE/FUNCTION Water Dropping		As Needed		
Recon		As Needed		

**INCIDENT RISK ANALYSIS**

**Saddle CA-SHF-1371**

**(ICS 215A) NIGHT Shift**

	HAZARDOUS ACTIONS /CONDITIONS	MITIGATIONS / WARNINGS / REMEDIES
ALL	DRY FUEL CONDITIONS	<ul style="list-style-type: none"> <li>Establish and maintain LCES</li> <li>Anticipate intense burning and rapid rates of spread</li> <li>Watch for spot fires</li> <li>Allow for adequate time to escape routes and safety zones</li> </ul>
ALL	SPOT FIRES	<ul style="list-style-type: none"> <li>Size up prior to engagement</li> <li>Watch for multiple spots</li> <li>Ensure LCES is in place</li> <li>Maintain Situational Awareness at all times</li> </ul>
ALL	SEVERE WEATHER	<ul style="list-style-type: none"> <li>Review and follow Thunderstorm Safety guidelines in IRPG page 19</li> <li>Observe 30/30 Rule for lightning safety..... page 19, IRPG</li> <li>Establish "Trigger Points" to withdraw, and ensure are known</li> </ul>
ALL	STRUCTURE PROTECTION	<ul style="list-style-type: none"> <li>Ensure LCES is in place</li> <li>Review Structure Protection; IRPG pages 12-16</li> <li>Do not commit to stay on a structure unless the area around the structure represents an adequate safety zone</li> <li>Set trigger points to disengage and allow adequate time to relocate to primary and secondary safety zones</li> <li>Check bridge load limits</li> <li>Look for propane tanks and other hazardous materials</li> </ul>
ALL	TRAFFIC & DRIVING	<ul style="list-style-type: none"> <li>Practice "Defensive Driving" techniques</li> <li>Use spotters when backing</li> <li>Honk horn to alert personnel when backing</li> <li>Always use headlights</li> <li>Use warning lights when working on roads or traveling in smoke</li> <li>Observe posted speed limits</li> <li>Maintain safe following distance from vehicles in front of you</li> <li>Use chock blocks, turn wheels into hill</li> </ul>
ALL	ENVIRONMENTAL HAZARDS	<ul style="list-style-type: none"> <li>Be alert for snakes, watch footing and hand placement around rocks</li> <li>Check yourself for ticks, watch for bees and other insects that bite</li> </ul>
ALL	HEAT RELATED ILLNESS (HRI) & DEHYDRATION	<ul style="list-style-type: none"> <li>Drink 2 to 1 water to sports drinks.</li> <li>Take Frequent breaks, minimum of 10 minutes every hour</li> <li>Recognize symptoms of HEAT RELATED ILLNESS which include Lack of energy o Headaches, dizziness, lack of rest, no hunger, poor eating habits, hot skin, and lack of sweating</li> </ul>
ALL	FATIGUE & OVER EXERTION	<ul style="list-style-type: none"> <li>Drink 1 quart of water each hour during and after work</li> <li>Rotate crews out of smoky areas</li> <li>Set a reasonable work pace and allow adequate rest breaks while on the project</li> <li>Use buddy system to monitor personnel of heat related and fatigue issues</li> </ul>
ALL	HEAVY EQUIPMENT OPERATIONS	<ul style="list-style-type: none"> <li>Ensure communications are established with operators</li> <li>Use hand signals if other communications are unavailable</li> <li>Maintain a 50'-100' exclusion area around equipment</li> <li>Use a spotter when backing</li> </ul>
ALL	STEEP TERRAIN & ROLLING DEBRIS	<ul style="list-style-type: none"> <li>Maintain 8'-10' spacing when working &amp; walking</li> <li>Don't work above any personnel</li> <li>Evaluate necessity to send personnel in areas with limited access</li> </ul>
ALL	HAZARD TREES	<ul style="list-style-type: none"> <li>Follow "Hazard Tree Safety" guidelines, IRPG pages 20 &amp; 21</li> <li>Post lookouts, or use a spotter in mop-up areas with personnel</li> <li>Don't park vehicles or take breaks in high concentrations of hazard trees</li> <li>Establish trigger points for disengagement during high wind events"</li> </ul>
ALL	MARIJUANA	<ul style="list-style-type: none"> <li>Maintain situational awareness. Watch for trip lines and improvements.</li> <li>Notify your supervisor and exit area.</li> </ul>
ALL	LINE CONSTRUCTION	<ul style="list-style-type: none"> <li>Establish adequate safety zones (IRPG p.7) and escape routes.</li> <li>Use Downhill Line Checklist (IRPG p. 9)</li> </ul>
ALL	POISON OAK	<ul style="list-style-type: none"> <li>Wash with soap and water</li> <li>Stay out of poison oak smoke</li> <li>Wash clothes when exposed</li> </ul>

INCIDENT NAME: <b>Saddle</b>  ICS 215a	DATE PREPARED: <p style="text-align: center;"><b>June, 2015</b></p>	OPERATIONAL PERIOD <b>night 06/13/2015</b> <b>1800-0600</b> Prepared by T OConnell
	TIME PREPARED: <b>1600 HOURS</b>	

# HEALTH AND SAFETY MESSAGE

**INCIDENT:** Saddle

**DATE:** June 13-14 Night Shift

## **Hazardous Conditions and Actions:**

- \* **EXTREME FIRE BEHAVIOR-** LCES must be in place
- \* **DRIVING-** Watch out for public especially children in camp area along road to incident.
- \* **WEATHER-** Hot and dry conditions
- \* **DANGER TREES-** Live and dead hazard trees
- \* **ENVIRONMENTAL HAZARDS-** Poison Oak, Bees, Snakes, etc.
- \* **RISK MANAGEMENT-** Identify and mitigate all hazards
- \* **MARIJUANA SITES-** Notify your supervisor, watch out for trip lines
- \* **HYDRATION-** Drink water before, during and after shift.

- 
- **Extreme fire behavior-** Be alert for changing conditions and have your LCES in place. Dry fuels are causing numerous spot fires to occur.
  - **Driving-** Watch out for public especially driving through Bar 717 Ranch (children present). Watch out for fire fighters working on roadways. Use seat belts and drive with headlights ON at all times.
  - **Weather-** Monitor weather conditions throughout your shift. Watch for changing conditions
  - **Danger Trees-** Identify and mitigate danger trees and other hazards by using glow sticks to mark hazards.
  - **Environmental hazards besides danger trees-** Poison oak- Identify these plants, if present in your work area let others know of their location. Try to limit contact with poison oak plants and tools that might have come in contact with poison oak on exposed skin areas. Wash with soap and water as much as possible, change or wash clothes. Seek help with preventative measures and treatment. If you notice signs and symptoms of a reaction, do not delay medical attention.
  - **Risk Management-** Maintain your situational awareness and be aware of Management Decision Points (trigger points) for reevaluating operations.
  - **Hydration-** Ensure personnel are replacing electrolytes as well as water.

**Review the Medical Emergency Procedures and Injury Reporting Procedures in the Medical Incident Report**

**Watch Out and Take Care of Each Other**

---

**/s/ Safety Officers; Terry O'Connell, Shelby Charley and Chuck Frank**

## MEDICAL PLAN (ICS 206 WF)

<b>1. Incident Name:</b> <b>Saddle Fire</b>		<b>2. Operational Period:</b> Date From 06/13/2015 Date To 1800 Time From 06/14/2015 Time To 0600						
<b>3. Ambulance Services:</b>								
Name	Complete Address	Phone / Frequency	Advanced Life Support (ALS)					
			YES	NO				
Medical Unit	ICP	530-400-0880	XX					
Trinity County Ambulance	Hayfork, Ca	911	XX					
STAR Ambulance	Mad River, Ca	911	XX					
Hyampom Vol. Fire Department	Hyampom, Ca	911		XX				
<b>4. Air Ambulance Services:</b>								
Name	Phone	Type of Aircraft & Capability						
REACH	911	RN's, Day and Night						
Mercy Air PHI	911	RN's, Day and Night						
CHP	911	Hoist Capable 165' Line						
<b>5. Hospitals:</b>								
Name Complete Address	GPS Datum – WGS 84 Coordinate Standard Degrees Decimal Minutes DD° MM.MMM° N – Lat DD° MM.MMM° N – Long		Travel Time		Phone	Helipad		Level of Care Facility
	Lat:	Long:	Air	Gnd		Yes	No	
Hayfork Comm. Health Clinic 6961 Hwy.3 Hayfork, Ca.	Lat:		N/A	45 Min	530-628-3361		XX	Clinic needs Hour 0900- 1700
	Long:							
	VHF:							
Trinity Hospital 410 N. Taylor St Weaverville, Ca.	Lat:	N 41 15.48'	15 Min	1.5 Hrs.	530-623-5541 Ext 1 for ER	XX		
	Long:	W 122 23.25'						
	VHF:							
Shasta Regional Medical Center 1100 Butte Redding, Ca	Lat:	N 40 35.08'	35 Min	2.5 Hrs.	530-244-5353	XX		
	Long:	W 122 23.25'						
	VHF:							
Mercy Medical Center 2175 Rosaline Ave. Redding, Ca.	Lat:	N 40 34.29'	35 Min	2.5 Hrs.	530-225-6000	XX		Level 2 Trauma
	Long:	W 122 23.67'						
	VHF:							
U.C. Davis Med. Center 2315 Stockton Blvd. Sacramento, Ca.	Lat:	N 38 33.17'	1 Hour	6 Hrs.	916-734-3636 916-734-3790	XX		Level 1 Trauma Burn Center
	Long:	W 121 27.21'						
	VHF:							
	Lat:							
	Long:							
	VHF:							
<b>6. Branch   Division/Group – Area Location Capability</b>								
Branch	EMS Responders and Capability		Hodorowski FEMT and Perez FEMP					
	Equipment Available on Scene		ALS					
	Medical Emergency Channel							
	ETA for Ambulance to Scene:							
Division/Group  A/C	Air:		20 Minutes					
	Ground		10 Minutes					
	Approved Helispot		Hyampom Airport					
	Lat:							
Long:								
ICS 206 WF	IAP Page							

6. Branch   Division/Group – Area Location Capability (con't)			
Branch	EMS Responders and Capability		
	Equipment Available on Scene		
	Medical Emergency Channel		
	ETA for Ambulance to Scene:		
	Air:		
Division/Group	Ground		
	Approved Helispot		
	Lat:		
	Long:		
Branch	EMS Responders and Capability		
	Equipment Available on Scene		
	Medical Emergency Channel		
	ETA for Ambulance to Scene:		
	Air:		
Division/Group	Ground		
	Approved Helispot		
	Lat:		
	Long:		
7. Remote Camp Location(s)			
	Point of Contact		
	EMS Responders & Capability		
	Equipment Available at Location		
	Medical Emergency Channel		
	ETA for Ambulance to Scene:		
	Air:		
	Ground		
	Approved Helispot		
	Lat:		
	Long:		
<b>8. Prepared by: (Medical Unit Leader)</b>	<b>9. Date / Time</b>	<b>10. Prepared by: (Safety Officer)</b>	<b>11. Date / Time</b>
Patrick Young MEDL	06/13/2015 @1200	Terry O'Connell SOF 2	06/13/2015 @ 1200
<b>ICS 206 WF</b>	<b>IAP Page</b>		

**LINE EMERGENCY:**

Crew Supervisor to contact DIVS with patient complaint/condition and location.

- 1) DIVS contacts:
  - Line EMT (If Assigned)
  - Communications Unit
  - Operations / Branch
- 2) On scene EMT, DIVS and Medical Unit Leader decide mode of transportation required.
- 3) Communications Unit contacts:
  - Medical Unit
  - Transport Dispatch
  - Safety
  - Helibase , if Air Ambulance in bound
- 4) Operations and Medical Unit will manage medical emergency with Communications.

**If a Medical/Medivac is needed be sure to:**

**Know the lat. and long. of the closest helispot.**

**WARNING SIGNS OF HEAT ILLNESS INCLUDES THE FOLLOWING:**

- An extremely high body temperature (above 103°F).
- Red, hot and dry skin (no sweating).
- Rapid, irregular strong pulse
- Throbbing headache
- Dizziness,

**CAMP EMERGENCY:**

Contact Medical Unit with patient complaint/condition and location. Medical Staff will respond to stabilize incident:

- Medical Unit contacts:
- Communications
- Safety
- Logistics
- Operations
- Crew Supervisor

### Medical Incident Report

**FOR ALL MEDICAL EMERGENCIES: IDENTIFY ON SCENE INCIDENT COMMANDER BY NAME AND POSITION AND ANNOUNCE "MEDICAL EMERGENCY" TO INITIATE RESPONSE FROM IMT COMMUNICATIONS/DISPATCH.**

**Use items one through nine to communicate situation to communications/dispatch.**

**1. CONTACT COMMUNICATIONS/DISPATCH**

*Ex: "Communications, Div. Alpha. Stand-by for Priority Medical Incident Report." (If life threatening request designated frequency be cleared for emergency traffic.)*

**2. INCIDENT STATUS:** Provide incident summary and command structure.

<b>Nature of Injury/Illness</b>		<i>Describe the injury (Ex: Broken leg with bleeding)</i>
Incident Name		<i>Geographic Name + "Medical" (Ex: Trout Meadow Medical)</i>
Incident Commander		<i>Name of IC</i>
Patient Care		<i>Name of Care Provider (Ex: EMT Smith)</i>

**3. INITIAL PATIENT ASSESSMENT:** Complete this section for each patient. This is only a brief, initial assessment. Provide additional patient info after completing this 9 Line Report.

Number of Patients:	Male / Female	Age:.	Weight:.
Conscious? <input type="checkbox"/> YES <input type="checkbox"/> <b>NO = MEDEVAC!</b>			
Breathing? <input type="checkbox"/> YES <input type="checkbox"/> <b>NO = MEDEVAC!</b>			
Mechanism of Injury: <i>What caused the injury?</i>			
Lat/Long (Datum WGS84) <i>Ex: N 40° 42.45' x W 123° 03.24'</i>			

**4. SEVERITY OF EMERGENCY, TRANSPORT PRIORITY**

SEVERITY	TRANSPORT PRIORITY
<input type="checkbox"/> <b>URGENT-RED Life threatening injury or illness.</b> <i>Ex: Unconscious, difficulty breathing, bleeding severely, 2° – 3° burns more than 4 palm sizes, heat stroke, disoriented.</i>	Ambulance or MEDEVAC helicopter. Evacuation need is <b>IMMEDIATE.</b>
<input type="checkbox"/> <b>PRIORITY-YELLOW Serious Injury or illness.</b> <i>Ex: Significant trauma, not able to walk, 2° – 3° burns not more than 1-2 palm sizes.</i>	Ambulance or consider air transport if at remote location. Evacuation may be <b>DELAYED.</b>
<input type="checkbox"/> <b>ROUTINE-GREEN</b> Not a life threatening injury or illness. <i>Ex: Sprains, strains, minor heat-related illness.</i>	Non-Emergency. Evacuation considered <b>Routine of Convenience.</b>

**5. TRANSPORT PLAN:**

**Air Transport:** (Agency Aircraft Preferred)

<input type="checkbox"/> Helispot	<input type="checkbox"/> Short-haul/Hoist	<input type="checkbox"/> Life Flight	<input type="checkbox"/> Other
-----------------------------------	---	--------------------------------------	--------------------------------

**Ground Transport:**

<input type="checkbox"/> Self-Extract	<input type="checkbox"/> Carry-Out	<input type="checkbox"/> Ambulance	<input type="checkbox"/> Other
---------------------------------------	------------------------------------	------------------------------------	--------------------------------

**6. ADDITIONAL RESOURCE/EQUIPMENT NEEDS:**

<input type="checkbox"/> Paramedic/EMT(s)	<input type="checkbox"/> Crew(s)	<input type="checkbox"/> SKED/Backboard/C-Collar
<input type="checkbox"/> Burn Sheet(s)	<input type="checkbox"/> Oxygen	<input type="checkbox"/> Trauma Bag
<input type="checkbox"/> Medication(s)	<input type="checkbox"/> IV/Fluid(s)	<input type="checkbox"/> Cardiac Monitor/AED
<input type="checkbox"/> Other (i.e. splints, rope rescue, wheeled litter)		





INCIDENT RADIO COMMUNICATIONS PLAN		1. Incident Name SADDLE		2. Date/ Time Prepared 6/12/15 11:00		3. Operational Period Date/Time 06/13-14/2015 18:00-06:00 NIGHT	
4. Basic Radio Channel Utilization							
Channel	Function	Frequency	Tone	Mode	Assignment	Remarks	
1	NIFC C1	RX: 168.7000 TX: 170.9750	1.0	N	CMD	Tone 1 (110.9) Hayfork Baily Lookout	
2	CH 2	RX: 169.5375 TX: 164.7125	1.0	N		Tone 1 (110.9)	
3	CH 3	RX: TX:		N			
4	NIFC TAC 1	RX: 168.0500 TX: 168.0500		N	DIV's A		
5	NIFC TAC 3	RX: 168.6000 TX: 168.6000		N	DIV" s C / M		
6	R5 TAC 4	RX: 166.5500 TX: 166.5500		N			
7	R5 TAC 5	RX: 167.1125 TX: 167.1125		N			
8	R5 TAC 6	RX: 168.2375 TX: 168.2375		N	DIV S / Z		
9	A/G CMD	RX: 164.7500 TX: 164.7500		N	ALL DIV'S	Order Air resources	
10	A/G TAC	RX: 169.1500 TX: 169.1500		N	ALL DIV'S	Communicate with the order air resource	
11	CH 11	RX: TX:		N			
12	CH 12	RX: TX:		N			
13	Forest Net	RX: 167.2250 TX: 167.2250	7.0	N		Tone 7 (167.9)	
14	Forest RPTR Net	RX: 171.5750 TX: 169.1000		N	ALT CMD	Tone 4 (136.5),	
15	CALCORD	RX: 156.0750 TX: 156.0750	6.0	N	Medical	Tone 6 (156.7)	
16	AirGuard	RX: 168.6250 TX: 168.6250	1.0	N	EMERGENCY	Tone 1 (110.9)	
5. Prepared by (Communications Unit) D Stoner							
Structure Group to use the Tactical frequency that is assign to the Div, they are in							



# Saddle Fire

## Incident Trainee/Trainer Data Form

Training Specialist: Robert Rivelle 707.498.1761

- All Incident trainees, including those on Firefighting Modules at your earliest opportunity complete this form and see the Training Specialist.
- Prior to DEMOB, remember to close your training package with the Training Specialist. To close your training package bring: 1) A performance rating from your trainer(s). 2) Your task book with as much entered in it as possible by your Trainer(s).

### A. Trainee Data

Trainee Name: \_\_\_\_\_ ICS Trainee Position: \_\_\_\_\_

Request Number: (circle one: A,C,E or O) # \_\_\_\_\_ Agency Designator (Example CA-ANF): \_\_\_\_\_

Cell / Contact # While on Incident: \_\_\_\_\_ Home Unit Position: \_\_\_\_\_

Date Assigned: \_\_\_\_\_ Fire Name / Order Number: Saddle Fire / CA-SHF--1371

**Trainees home unit contact to mail your training package (Fire Chief, Training Officer):**

Name: \_\_\_\_\_ Agency/Unit: \_\_\_\_\_

Agency/Unit Address: \_\_\_\_\_

City: \_\_\_\_\_ State: \_\_\_\_\_ Zip Code: \_\_\_\_\_ Phone: \_\_\_\_\_

### B. Trainee Prerequisites

1. Possesses valid Red Card or agency certification card? \_\_\_\_\_ Yes \_\_\_\_\_ No

2. Trainee has current position task book issued by home unit? \_\_\_\_\_ Yes \_\_\_\_\_ No

**C. Trainer/Evaluator Data** Trainer / Evaluator Name: \_\_\_\_\_

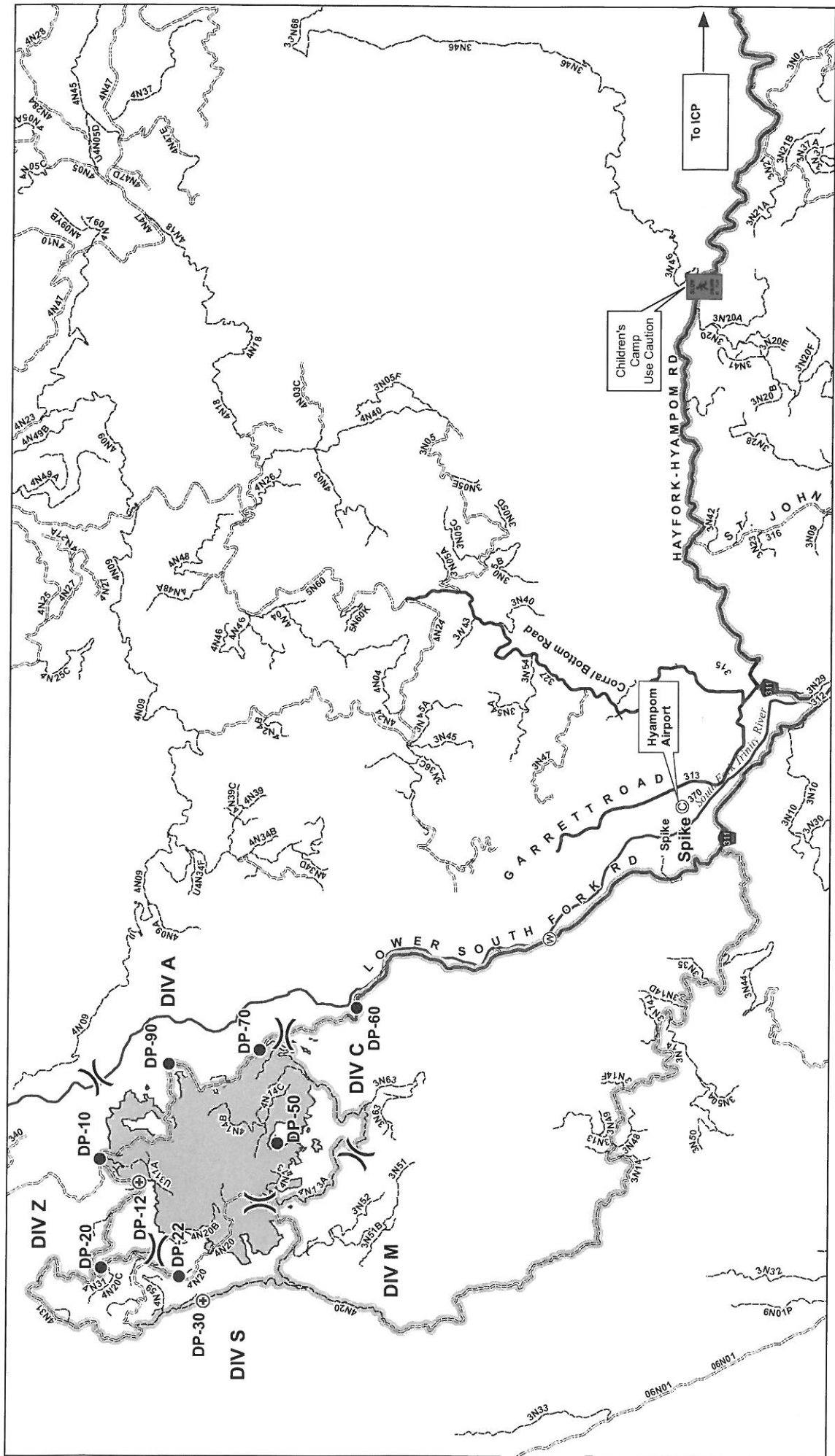
ICS position on fire: \_\_\_\_\_ Agency: \_\_\_\_\_

City: \_\_\_\_\_ State: \_\_\_\_\_ Cell / Contact While on Incident: \_\_\_\_\_

### D. Trainee Goals - (2 tasks or objectives you would like to address).

1. \_\_\_\_\_

2. \_\_\_\_\_



**North**

0 1 Miles

Map Datum: NAD 83 UTM Zone 10  
 NorCal 2 GIS: 6/13/2015 3:28:18 PM

**North**

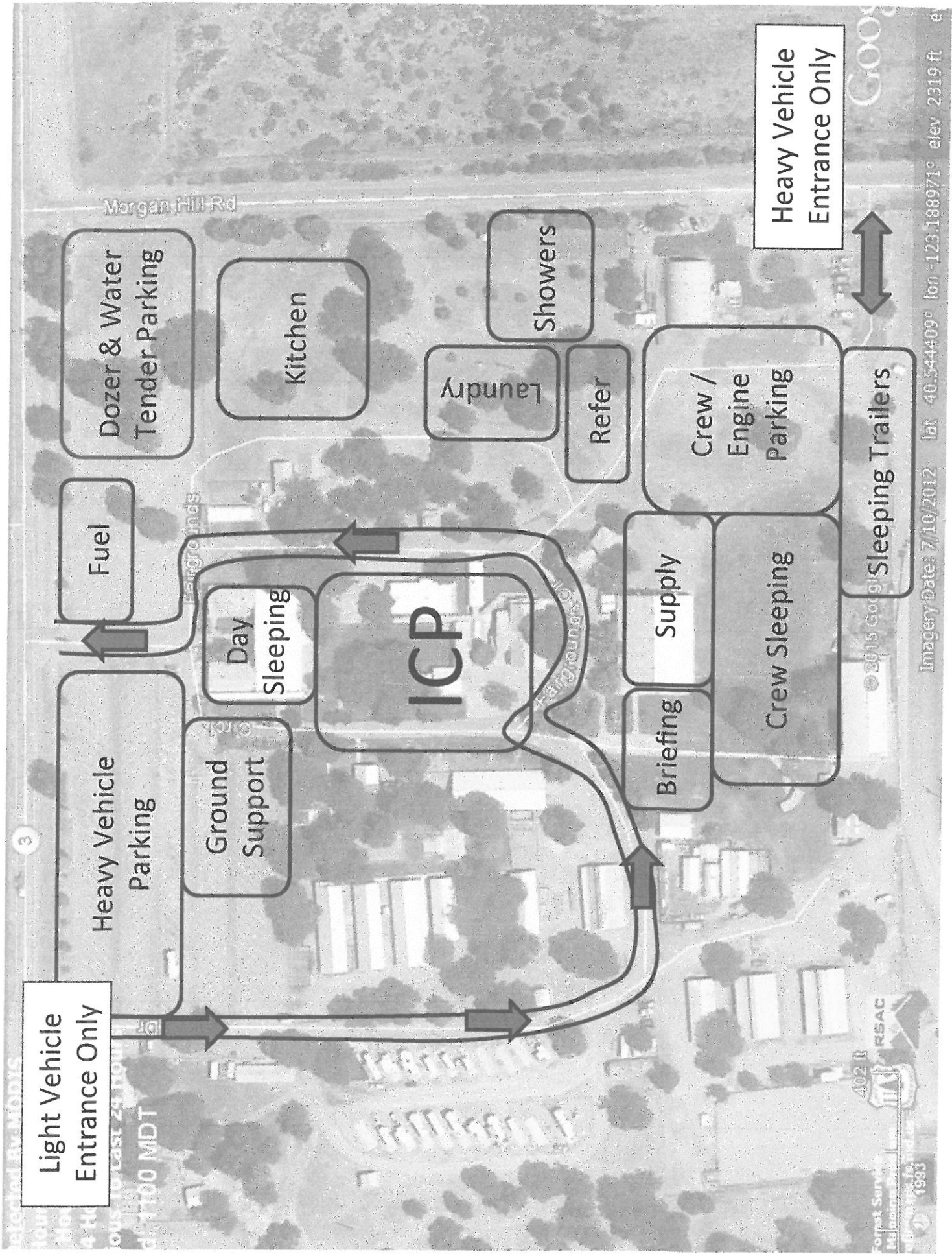
Incident Management Team

**Legend**

- Travel\_Routes
- Roads
- Surface Type
- ASPHALT
- CRUSHED OR AGGREGATE OR GRAVEL
- BITUMINOUS SURFACE TREATMENT
- NATIVE MATERIAL
- Fire Perimeter
- Camp
- Drop Point
- Unimproved Landing Site
- Water Source
- Division

# TRANSPORTATION MAP

**SADDLE FIRE**  
**SHF-1371**  
 JUNE 13, 2015  
 NIGHT SHIFT



Light Vehicle Entrance Only

Heavy Vehicle Parking

Fuel

Ground Support

Day Sleeping

ICP

Refer

Briefing

Supply

Crew Sleeping

Crew / Engine Parking

Sleeping Trailers

Heavy Vehicle Entrance Only

Morgan Hill Rd

3

402 B

RSAC

Forest Service

1993

Imagery Date: 7/10/2012

lat 40.544409° lon -123.188971° elev 2319 ft

Google

# ICP

Day Sleeping

Communications

Facilities  
Food CTSP

GIS

Planning Meeting

Supply

Resources  
OPS SIT  
Air Ops

Equip Time  
Cost

FSC  
Personnel  
Time

Office Trailer

Order/Logs

Check In / Demob  
Training

Briefing

Information

FBAN IMET

Operations

Medical  
Comp Claims

IC Liaison  
Safety

Circle

Fargrounds Cir

120 ft

© 2015 Google

Imagery Date: 7/10/2012

lat 40.544252° lon -123.189052° elev 2320 ft

Forest Service  
Monitoring Program  
1993



Google



