

# **South Complex**

**Incident Action Plan**

**Saturday, September 5<sup>th</sup>, 2015**

**Day Shift, 0700 - 1900**

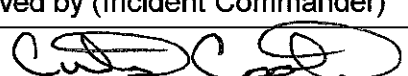


- ✓ **Review and adhere to the Driving Protocols in todays IAP**
  
- ✓ **Planning for Medical Emergencies**
  - **What are we going to do if someone gets hurt?**
  - **How will we get them out of here?**
  - **How long will it take to get them to a hospital?**
  
- ✓ **Refer to Medical Plan in IAP**
  - **Review page 2 in IRPG**

**CA-SHF-002108, P5J0MZ, (0514)**

**Shasta Trinity National Forest**

**Northern California Incident Management Team 1**

<b>INCIDENT OBJECTIVES</b>		1. Incident Name		2. Date Prepared		3. Time Prepared	
ICS 202		<b>SOUTH COMPLEX</b>		<b>09/04/2015</b>		<b>2000</b>	
4. Operational Period							
<b>09/05/2015 0700-1900</b>							
5. General Control Objectives for the Incident (include alternatives)							
<p><b>CONTROL / OPERATIONAL OBJECTIVES:</b></p> <ol style="list-style-type: none"> <li>Keep the East flank of Pattison fire: <ul style="list-style-type: none"> <li>South of 4N29 Road in Division W</li> <li>West of the West Fork of Miners Creek</li> <li>North of Hayfork Creek</li> </ul> </li> <li>Keep all other divisions of the South Fork Complex within current containment lines.</li> <li>Continue implementing fire suppression damage repair in accordance with the approved plan and agency policy.</li> </ol> <p><b>MANAGEMENT OBJECTIVES:</b></p> <ol style="list-style-type: none"> <li>Provide for Firefighter and Public safety through hazard recognition and application of the risk management process.</li> <li>Utilize Resource Advisors and USFS personnel in identification of suppression repair work.</li> <li>Engage in fire suppression repair operations that are cost effective.</li> <li>Minimize suppression damage to natural and cultural resources.</li> <li>Keep public informed with current and accurate fire information including closure to assist in mitigating public safety concerns.</li> </ol>							
6. Weather Forecast for Period							
See attached spot weather forecast.							
7. General Safety Message							
See attached safety message.							
8. Attachments							
x	Organization List-ICS 203	x	Air Ops Plan ICS-220	x	Fire Weather Forecast		
x	Division Assignment List-ICS 204	x	Incident Map	x	Fire Behavior Forecast		
x	Communications Plan-ICS 205		Traffic Plan	x	Unit Log ICS-214		
x	Medical Plan-ICS 206	x	Safety Message		Vicinity Map		
9. Prepared by				10. Approved by (Incident Commander)			
Walter Herzog				Jay Kurth 			

<b>ORGANIZATION ASSIGNMENT LIST</b>		Supply Unit	Dave Alicea (t)
1. Incident Name <b>South Complex</b>		Ordering	Ron Pierce, Tamara Hanna
2. Date September 4, 2015	3. Time 1630	Facilities Unit	Jeff Huhtala, Richard Crowther (t)
4. Operational Period <b>Day Shift September 5, 2015</b>		Ground Support Unit	Hary Zabel, Kristen Lark (t)
Position	Name	Communications Unit	Phil Shafer, Harold Reed (t)
5. Incident Commander and Staff		Medical Unit	Josh Ramey
Incident Commander	Jay Kurth	Receiving & Distribution	Fred Johnson
Deputy	Kent Swartzlander	Security Manager	Mike Turner
Incident Commander (t)	Curtis Coots (t)	Food Unit	Jay Westlake, Mark McGuinness (t)
Safety Officer	Michele Tanzi, Jeff Barnhart, Jim Mackenson	Equipment Manager	Mona Lake
Information Officer	Phyllis Swanson, Barbara Rebiskie, Jane Laboa	<b>9. Operations Section</b>	
Liaison Officer	Kathy Hardy	Day Operations	Alec Lane
Human Resources		Night Operations	
6. Agency Representative		Planning Ops	Curt Lindstrand
Agency Administrator	Dave Myers	<b>a. Division/Groups Day</b>	
Agency Admin Rep	Tom Hall, Randall Walker	Division/Group H/L/M	Randy Jennings, Ray Dombroski (t)
Shasta NF Duty Chief	Gwen Sanchez	Division/Group O/Q	Bret Davidson
Lead Resource Advisor	Lois Shoemaker	Division/Group S/Z/T	Dale Schmidt
Trinity County Sheriff	Mike Rist	Division/Group W/X	Unstaffed
Trinity County Advisor	Larry Winter	Division/Group Y	Nick Bunch
PG&E	Joe Little	Division/Group	
American Red Cross	Kendra Pospychalla	Division/Group	
Hyampom Volunteer FD	Joe Watkins	Division/Group	
CHP	Mike Arpai	Division/Group	
Trinity PUD	Rory Barret	<b>b. Division/Groups Night</b>	
CCC	Steven Donnelly	Division/Group	
7. Planning Section		Division/Group	
Chief	Walter Herzog	Division/Group	
Deputy		Division/Group	
Resources / Demob / Documentation / Status-Check-in Unit	Rita Mustatia, Tanya Costello (t)	Division/Group	
Situation Unit	Tim Ritchey	Division/Group	
Training	Dominic Panno	<b>c. Air Operations Branch</b>	
CTSP	George Steel	Air Operations Branch Director	Glenn Dietz
GISS	Matt Dickinson, Elizabeth Hale, Elaine Elliot, Shawn Thorton	Air Attack Supervisor	
FBAN	John Wood	Air Support Supervisor	
IMET	Phil Manuel	Helicopter Coordinator	
SCKN	Ronnee -Sue Helzner, Heather Vandervan	Air Tanker Coordinator	
8. Logistics Section		<b>10. Finance Section</b>	
Chief	Ken Kumpe, Richard Sheets (t)	Chief	Lois Charlton
Deputy		Time Unit	
		Cost Unit	Kenny Lucien
		Compensation/Claims Unit	Debbie McIntosh
		Equipment Time	Lou Ann Charbonnier
		PTRC	Alexandra Behr
		Prepared by (Resource Unit Leader) Tanya Costello (t)	
		Approved by (Planning Section Chief) Walter Herzog	

<b>DIVISION ASSIGNMENT LIST</b>		1. Branch		2. Division/Group <b>H/L/M 1 OF 2</b>		
3. Incident Name <b>SOUTH COMPLEX</b>		4. Operational Period Date: <b>September 5, 2015</b> Time: <b>0700 - 1900</b>				
5. Operations Personnel						
Operations Chief	ALEC LANE	Division/Group Supervisor		RANDY JENNINGS, RAY DOMBROSKI (T)		
Planning Ops.	CURT LINDSTAND	Air Attack Supervisor No.		GLENN DIETZ		
6. Resources Assigned this Period						
Strike Team/Task Force/ Resource Designator	Leader	LWD	Number Persons	Trans. Needed	Drop Off PT./Time	Pick Up PT./Time
HC- T2IA FIRESTORM #15 C-114	DUANE FIELDS	9/9	20	N	0700	1900
HC-T2IA GFP ENT. C-113	JASON CAMPBELL	9/11	20	N	0700	1900
ENG S/T - T3 - 3660C CA-PNF E-338	COTTINGHAM/ LONG (t)	9/13	27	N	0700	1900
ENG - T3 - CA SHF # 371 E-336	KEVIN MOGLIA	9/12	5	N	0700	1900
ENG - T3 - HYM 3331 E-224	MIKE BYRD	9/29	2	N	0700	1900
ENG - T6 - MOUNT ADAMS E-330	CHARLES NEWDERLY	9/12	3	N	0700	1900
WT-T2 #21 E-293	DENNIS FRANKLIN	9/9	1	N	0700	1900
WT SIERRA WATER E-239	ROBERT DARLING	9/8	1	N	0700	1900
DOZ T2 HAYS EQUIP. E-170	CHARLIE CIGANOVICH	9/10	1	N	0700	1900
EXCAV-T3-WILCOX CO. E-332	RICK WILCOX	9/12	1	N	0700	1900
EXCAV-T2-KIRACK E-328	POTTER	9/10	1	N	0700	1900
CHIPPER FIRESTORM E-309	TYSON LOWE	9/7	1	N	0700	1900
FALT NORTH ZONE FALLER MOD O-793	HALL / REILLY	9/17	2	N	0700	1900
TFLD O-775	CASEY LOVELL	9/15	1	N	0700	1900
TFLD (t) O-776	JESSE LOEFFLER	9/15	1	N	0700	1900
TFLD O-770	DAVE BAKAS	9/17	1	N	0700	1900
7. Control Operations Mop up as needed to maintain containment. Continue to patrol and secure lines. Continue suppression repair on contingency lines and control lines as well as assess and repair Drop Points and roads in coordination with READS.						
Special Instructions: Identify resources available to respond for initial attack. Utilize water use log sheet and turn into DIVS at end of shift. Coordinate with ground support to backhaul any miscellaneous equipment and trash. All suppression repair activities will be coordinated by the lead READ. Check in with lead READ at end of shift to track suppression repair work. Remove flagging if no longer in use.						
9. Division Group Communication Summary						
Function	Channel	Channel Name	RX Frequency N/W	RX Tone	TX Frequency N/W	TX Tone
Command	1	NIFC C3	168.0750 N	131.8	170.4250 N	131.8
Command	2	NIFC C31	163.5750 N	131.8	169.7250 N	131.8
Tactical	6	NIFC T3	168.6000	131.8	168.6000	131.8
A/G Command	10	A/G CMD	168.7375 N		168.7375 N	
Prepared by (Resource Unit Leader) Tanya Costello (t)			Approved by (Planning Section Chief) Walter Herzog		Date September 4, 2015	

<b>DIVISION ASSIGNMENT LIST</b>		1. Branch		2. Division/Group <b>H/L/M 2 OF2</b>		
3. Incident Name <b>SOUTH COMPLEX</b>		4. Operational Period Date: <b>September 5, 2015</b> Time: <b>0700 - 1900</b>				
5. <b>Operations Personnel</b>						
Operations Chief	ALEC LANE	Division/Group Supervisor		JOHN MARKALUNAS, RANDY JENNINGS, RAY DOMBROSKI (T)		
Planning Ops.	CURT LINDSTAND	Air Attack Supervisor No.		GLENN DIETZ		
6. <b>Resources Assigned this Period</b>						
Strike Team/Task Force/ Resource Designator	Leader	LWD	Number Persons	Trans. Needed	Drop Off PT./Time	Pick Up PT./Time
TFLD (t) O-771	JENNIFER McDOWELL	9/17	1	N	0700	1900
HEQB O-772	AARON LAITA	9/22	1	N	0700	1900
HEQB O-777	KRISTOPHER DARNALL	9/16	1	N	0700	1900
HEQB O-791	RICHARD LUCIUS	9/18	1	N	0700	1900
FOBS O-757	BEAU RICHWINE	9/16	1	N	0700	1900
SOFR O-695 (Share w/ DIV Y)	THOMAS DONOHOE	9/14	1	N	0700	1900
FEMP O-579 (Share w/ DIV Y)	PAUL SALVESTRIN	9/6	1	N	0700	1900
FEMP O-5492 (Share w/ DIV Y)	FRANK GALLO	9/7	1	N	0700	1900
READ O-424	DENICE EDGAR	9/8	1	N	0700	1900
READ O-144	MIGUEL JEFFREY	9/7	1	N	0700	1900
READ O-666	RAY CABLAYAN	9/11	1	N	0700	1900
7. Control Operations						
Mop up as needed to maintain containment.						
Continue to patrol and secure lines.						
Continue suppression repair on contingency lines and control lines as well as assess and repair Drop Points and roads in coordination with READS.						
Special Instructions:						
Identify resources available to respond for initial attack.						
Utilize water use log sheet and turn into DIVS at end of shift.						
Coordinate with ground support to backhaul any miscellaneous equipment and trash.						
All suppression repair activities will be coordinated by the lead READ.						
Check in with lead READ at end of shift to track suppression repair work.						
Remove flagging if no longer in use.						
9. Division Group Communication Summary						
Function	Channel	Channel Name	RX Frequency N/W	RX Tone	TX Frequency N/W	TX Tone
Command	1	NIFC C3	168.0750 N	131.8	170.4250 N	131.8
Command	2	NIFC C31	163.5750 N	131.8	169.7250 N	131.8
Tactical	6	NIFC T3	168.6000	131.8	168.6000	131.8
A/G Command	10	A/G CMD	168.7375 N		168.7375 N	
Prepared by (Resource Unit Leader) Tanya Costello (t)		Approved by (Planning Section Chief) Walter Herzog			Date September 4, 2015	

<b>DIVISION ASSIGNMENT LIST</b>		1. Branch	2. Division/Group <b>O/Q</b>			
3. Incident Name <b>SOUTH COMPLEX</b>		4. Operational Period Date: <b>September 5, 2015</b> Time: <b>0700 - 1900</b>				
5. Operations Personnel						
Operations Chief	ALEC LANE	Division/Group Supervisor	BRET DAVIDSON			
Planning Ops.	CURT LINDSTAND	Air Attack Supervisor No.	GLENN DIETZ			
6. Resources Assigned this Period						
Strike Team/Task Force/ Resource Designator	Leader	LWD	Number Persons	Trans. Needed	Drop Off PT./Time	Pick Up PT./Time
ENG T6 OUTBACK E-8	LEE HOWARD	9/13	3	N	0700	1900
ENG T6 RAMOS EAGLE E-272	ROBERT MORRIS	9/13	3	N	0700	1900
MAST T2 CARLSON CONST. S-24	CASEY CARLSON	9/13	1	N	0700	1900
FAL1 MILLER WOOD O-546	BREWSTER TAMBLIN	9/6	2	N	0700	1900
FELB O-566	PATRICK DOYLE	9/7	1	N	0700	1900
FEMT O-300 (Share w/ DIV S/Z/T)	MICHAEL BOARDAN	9/6	1	N	0700	1900
FEMP O-598 (Share w/ DIV S/Z/T)	RICHARD WALSH	9/9	1	N	0700	1900
READ O-613	TERRY BRILL	9/10	1	N	0700	1900
READ O-773	BRENNA MONTAGNE	9/16	1	N	0700	1900
SOF2 O-774.58 (Share w/ DIV S/Z/T)	JEFF BARNHART	9/16	1	N	0700	1900
7. Control Operations						
Mop up as needed to maintain containment.						
Continue to patrol and secure lines.						
Continue suppression repair on contingency lines and control lines as well as assess and repair Drop Points and roads in coordination with READS.						
Special Instructions:						
Identify resources available to respond for initial attack.						
Utilize water use log sheet and turn into DIVS at end of shift.						
Coordinate with ground support to backhaul any miscellaneous equipment and trash.						
All suppression repair activities will be coordinated by the lead READ.						
Check in with lead READ at end of shift to track suppression repair work.						
Remove flagging if no longer in use.						
9. Division Group Communication Summary						
Function	Channel	Channel Name	RX Frequency N/W	RX Tone	TX Frequency N/W	TX Tone
Command	2	NIFC C31	163.5750 N	131.8	169.7250 N	131.8
Tactical	4	NIFC TAC 1	168.0500	131.8	168.0500	131.8
A/G Command	10	A/G CMD	168.7375 N		168.7375 N	
Prepared by (Resource Unit Leader) Tanya Costello (t)		Approved by (Planning Section Chief) Walter Herzog			Date September 4, 2015	

<b>DIVISION ASSIGNMENT LIST</b>		1. Branch		2. Division/Group <b>S/Z/T 1 OF 2</b>		
3. Incident Name <b>SOUTH COMPLEX</b>		4. Operational Period Date: <b>September 5, 2015</b> Time: <b>0700 - 1900</b>				
5. Operations Personnel						
Operations Chief	ALEC LANE	Division/Group Supervisor		DALE SCHMIDT		
Planning Ops.	CURT LINDSTAND	Air Attack Supervisor No.		GLENN DIETZ		
6. Resources Assigned this Period						
Strike Team/Task Force/ Resource Designator	Leader	LWD	Number Persons	Trans. Needed	Drop Off PT./Time	Pick Up PT./Time
HC2 OC 36 C-111	BRIAN ETHERIDGE	9/11	20	N	0700	1900
ENG3 FIRESTORM E-289	TOMMEL VANCE	9/13	3	N	0700	1900
ENG6 SHANK E-18	RYAN FLORES	9/11	3	N	0700	1900
ENG6 MOUNT ADAMS #323 E-329	PAULA HOLTER	9/11	3	N	0700	1900
ENG6 MOUNT ADAMS #322 E-331	DONALD HOLTER	9/11	3	N	0700	1900
WT-T2 DARRAH LOGGING E-37	MARVIN DARGER	9/12	1	N	0700	1900
WT-T2 WILLMORE ENT. E-32	JESSE HOLDEN	9/13	1	N	0700	1900
WT-T2 DARRAH LOGGING E-234	WAYNE VIRAG	9/12	1	N	0700	1900
WT-T2 CA-TNF # 4289 E-291	PEDRO BARBA	9/8	1	N	0700	1900
DOZ-T1-BEN'S TRUCK #19 E-109	BILL SCARBOROUGH	9/10	1	N	0700	1900
DOZ2 MODOC #4 E-279	PERRY ST. JOHN/ INSLEY (T)	9/15	2	N	0700	1900
DOZ2 NORTH RIVERS E-209	MIKE NICHOLS	9/6	1	N	0700	1900
EXCA2 NORTH RIVERS E-319	TIM BECK	9/13	1	N	0700	1900
EXCA2 ELLENBERGER E-320	WALBERG	9/10	1	N	0700	1900
EXCA3 WANER ENT. E-333	ZANE CLAIRE	9/13	1	N	0700	1900
7. Control Operations Mop up as needed to maintain containment. Continue to patrol and secure lines. Continue suppression repair on contingency lines and control lines as well as assess and repair Drop Points and roads in coordination with READS.						
Special Instructions: Identify resources available to respond for initial attack. Utilize water use log sheet and turn into DIVS at end of shift. Coordinate with ground support to backhaul any miscellaneous equipment and trash. All suppression repair activities will be coordinated by the lead READ. Check in with lead READ at end of shift to track suppression repair work. Remove flagging if no longer in use.						
9. Division Group Communication Summary						
Function	Channel	Channel Name	RX Frequency N/W	RX Tone	TX Frequency N/W	TX Tone
Command	2	NIFC C31	163.5750 N	131.8	169.7250 N	131.8
Command	3	NIFC C39	173.8750N	131.8	163.6625N	131.8
Tactical	8	R5 TAC 5	167.1125 N	131.8	167.1125 N	131.8
A/G Command	10	A/G CMD	168.7375 N		168.7375 N	
Prepared by (Resource Unit Leader) Tanya Costello (f)		Approved by (Planning Section Chief) Walter Herzog			Date September 4, 2015	

<b>DIVISION ASSIGNMENT LIST</b>			1. Branch		2. Division/Group <b>S/Z/T 2 OF 2</b>		
3. Incident Name <b>SOUTH COMPLEX</b>			4. Operational Period Date: <b>September 5, 2015</b> Time: <b>0700 - 1900</b>				
5. Operations Personnel							
Operations Chief		ALEC LANE		Division/Group Supervisor		DALE SCHMIDT	
Planning Ops.		CURT LINDSTAND		Air Attack Supervisor No.		GLENN DIETZ	
6. Resources Assigned this Period							
Strike Team/Task Force/ Resource Designator		Leader	LWD	Number Persons	Trans. Needed	Drop Off PT./Time	Pick Up PT./Time
GRADER E-334		ED STONE	9/13	1	N	0700	1900
CHIPPER WELL EQUIPED E-337		RONALD ADKINS	9/13	1	N	0700	1900
HEQB O-751		DARREN BEATY	9/15	1	N	0700	1900
HEQB O-752		MICHAEL GROSENBACH	9/15	1	N	0700	1900
TFLD O-765		KARL FOWLER	9/17	1	N	0700	1900
TFLD (f) O-795		BRIAN MIDTLYNG	9/17	1	N	0700	1900
TFLD (T) O-568		KURT STEELE	9/8	1	N	0700	1900
STEQ O-513		JEFFERY SMITH	9/9	1	N	0700	1900
SOFR O-774.58 (Share w/ DIV O/Q)		JEFF BARNHART	9/16	1	N	0700	1900
FEMT O-300 (Share w/ DIV O/Q)		MICHAEL BOARDAN	9/6	1	N	0700	1900
FEMP O-598 (Share w/ DIV O/Q)		RICHARD WALSH	9/9	1	N	0700	1900
READ O-779		JOHAN HOGERVORST	9/17	1	N	0700	1900
THSP O-768		STACY HIGHTOWER	9/15	1	N	0700	1900
7. Control Operations							
Mop up as needed to maintain containment.							
Continue to patrol and secure lines.							
Continue suppression repair on contingency lines and control lines as well as assess and repair Drop Points and roads in coordination with READS.							
Special Instructions:							
Identify resources available to respond for initial attack.							
Utilize water use log sheet and turn into DIVS at end of shift.							
Coordinate with ground support to backhaul any miscellaneous equipment and trash.							
All suppression repair activities will be coordinated by the lead READ.							
Check in with lead READ at end of shift to track suppression repair work.							
Remove flagging if no longer in use.							
9. Division Group Communication Summary							
Function	Channel	Channel Name	RX Frequency N/W	RX Tone	TX Frequency N/W	TX Tone	
Command	2	NIFC C31	163.5750 N	131.8	169.7250 N	131.8	
Command	3	NIFC C39	173.8750N	131.8	163.6625N	131.8	
Tactical	8	R5 TAC 5	167.1125 N	131.8	167.1125 N	131.8	
A/G Command	10	A/G CMD	168.7375 N		168.7375 N		
Prepared by (Resource Unit Leader) Tanya Costello (f)			Approved by (Planning Section Chief) Walter Herzog		Date September 4, 2015		





<b>DIVISION ASSIGNMENT LIST</b>		1. Branch		2. Division/Group <b>Y</b>			
3. Incident Name <b>SOUTH COMPLEX</b>		4. Operational Period Date: <b>September 5, 2015</b> Time: <b>0700 - 1900</b>					
<b>5. Operations Personnel</b>							
Operations Chief	ALEC LANE		Division/Group Supervisor		NICK BUNCH		
Planning Ops.	CURT LINDSTAND		Air Attack Supervisor No.		GLENN DIETZ		
<b>6. Resources Assigned this Period</b>							
Strike Team/Task Force/ Resource Designator		Leader	LWD	Number Persons	Trans. Needed	Drop Off PT./Time	Pick Up PT./Time
ENG T3 CA-SHF 12 - E-335		MATT PUCKETT	9/12	5	N	0700	1900
EVCAV-T2 CROSS COUNTRY E-327		BYRON CROSS	9/10	1	N	0700	1900
EXCAV-T2- LEPAGE CO. E-223		BROOKS / STIEFF	9/11	2	N	0700	1900
DOZ CATTENEO TRUCKING E-339+ TRANS		RENO PATTON	9/16	2	N	0700	1900
FOBS O-630		BLAKE ABBOTT	9/9	1	N	0700	1900
FEMP O-579 (Share w/ DIV H/L/M)		PAUL SALVESTRIN	9/6	1	N	0700	1900
FEMP O-5492 (Share w/ DIV H/L/M)		FRANK GALLO	9/7	1	N	0700	1900
SOFR O-695 (Share w/ DIV H/L/M)		THOMAS DONOHOE	9/14	1	N	0700	1900
<b>7. Control Operations</b>							
Mop up as needed to maintain containment.							
Continue to patrol and secure lines.							
Continue suppression repair on contingency lines and control lines as well as assess and repair Drop Points and roads in coordination with READS.							
<b>Special Instructions:</b>							
Identify resources available to respond for initial attack.							
Utilize water use log sheet and turn into DIVS at end of shift.							
Coordinate with ground support to backhaul any miscellaneous equipment and trash.							
All suppression repair activities will be coordinated by the lead READ.							
Check in with lead READ at end of shift to track suppression repair work.							
Remove flagging if no longer in use.							
<b>9. Division Group Communication Summary</b>							
Function	Channel	Channel Name	RX Frequency N/W	RX Tone	TX Frequency N/W	TX Tone	
Command	1	NIFC C3	168.0750 N	131.8	170.4250 N	131.8	
Command	3	NIFC C39	173.8750N	131.8	163.6625N	131.8	
Tactical	7	R5 TAC 4	166.5500	131.8	166.5500	131.8	
A/G Command	10	A/G CMD	168.7375 N		168.7375 N		
Prepared by (Resource Unit Leader) Tanya Costello (t)			Approved by (Planning Section Chief) Walter Herzog		Date September 4, 2015		



# FIRE BEHAVIOR FORECAST

<b>FORECAST NUMBER:</b> 60	<b>TYPE OF FIRE:</b> Wildland Fire
<b>FIRE NAME:</b> South Complex	<b>OPERATIONAL PERIOD:</b> 9/05, 0700 to 1900
<b>DATE ISSUED:</b> 9/04/15	<b>TIME ISSUED:</b> 2000
<b>UNIT:</b> Shasta Trinity National Forest	<b>SIGNED:</b> /s/ John Wood FBAN

## INPUTS

**WEATHER SUMMARY:** The upper level trough of low pressure which has been producing the Fall-like weather will move east and away from the area. A warming trend will commence this weekend with above normal temperatures anticipated for the week following Labor Day. No rain is expected for the next 6-10 days.

Expect maximum temperatures Ridges: 70-75, Valleys: 78-83 Minimum humidity, 18-23%. 20 foot winds: Ridges north 5-8 mph gusts 16, Mid-Slope: upslope 2-5 mph, Valleys: up valley 4-6 with gusts to 12 late afternoon and evening.

## OUTPUTS

**GENERAL:** Windy conditions with warming and drying weather make fire activity more likely. Areas with heat and available fuels will show some activity. As temperatures warm and relative humidity lowers expect aspect to show more influence over development of fire activity as south and west slopes will heat and dry faster than north and east slopes. The presence and amount of light fuels will raise the potential for fire activity, especially on south and west slopes. With shorter days fuels will need more time to reach burnable levels each day, though as we get back to warmer drier days this effect may not make a noticeable difference. Exposed fuels will have a faster drying time than sheltered fuels both because of exposure to wind and solar heating aiding the drying process. Fire spread will likely be limited to small areas that could support active fire spread and a change in slope, aspect and fuel moistures could substantially moderate spread potential. Soil moisture will persist with ground cover and sheltered areas and have a longer duration effect on fuel moistures on fuels in direct contact with the ground. Needle cast from scorched or underburned trees will continue to fall adding some potential for fire spread and may be a concern in areas with viable heat sources. Cloud cover will delay any potential drying and if precipitation is received, will affect fuels for the duration of the shift.

Backing/Flanking rate of spread up to 2 ch/hr, flame lengths 1-3 feet. Head fire in timber understory rate of spread 3-12 ch/hr, flame lengths 2-9 feet, timber litter rate of spread up to 3 ch/hr, flame lengths around 2 feet. In shrub fuels rates of spread could reach 25ch/hr, flame lengths 5-7 feet in the driest sites with slope and wind alignment.

**SPECIFIC:** Fine fuel moisture 6% 1000 hr 12% Probability of ignition 55-75% Spot distance about a 1/4 mile.

All Divisions: Fire activity will begin to pick up from the low levels experienced following the rain event last Saturday. Expect fire spread in areas with heat source and available fuel. Fire behavior will likely be smoldering and creeping but where fuels are exposed to the wind active burning will be possible for brief periods of fire activity. Slight changes in conditions will modify fire activity.

## AIR OPERATIONS

Expect clouds in the morning and smoke is not likely to impact air operations but low ceilings near ridges are possible through the late morning and should be clear in the afternoon.

## Safety Message

Lackadaisical attitudes toward seemingly simple or mundane tasks can lead to unintended outcomes. Performing simple tasks or tasks that are perceived as simple can lead firefighters toward underestimating the need to plan and communicate actions. Take time to clearly communicate your intent and ensure supervisors, crewmembers and adjoint forces understand the plan.

# INCIDENT RADIO COMMUNICATIONS PLAN

Incident Name  
**South Complex**

Date/Time Prepared  
**9/4/15 1700**

Operational Period Date/Time  
**9/5/15 0700 - 1900**

Zn / Ch	Function	Channel Name/Trunked Talkgroup	Assignment	RX Freq	RX Tone/NAC	TX Freq	TX Tone/NAC	Mode A, D, M	Remarks
1	COMMAND	NIFC C3	ALL DIVISIONS	168.0750	131.8	170.4250	131.8	A	LIMEDYKE MT. Linked to CMD Net
2	COMMAND	NIFC C31	ALL DIVISIONS	163.5750	131.8	169.7250	131.8	A	IRONSIDE MT. Linked to CMD Net
3	COMMAND	NIFC C39	ALL DIVISIONS	173.8750	131.8	163.6625	131.8	A	HAYFORK BALLY Linked to CMD Net
4	TACTICAL	NIFC T1	DIV O / Q	168.0500	131.8	168.0500	131.8	A	
5	TACTICAL	NIFC T2	I / A	168.2000	CSQ	168.2000		A	INITIAL ATTACK
6	TACTICAL	NIFC T3	DIV H / L / M	168.6000	131.8	168.6000	131.8	A	
7	TACTICAL	R5 TAC 4	DIV W / X / Y	166.5500	131.8	166.5500	131.8	A	
8	TACTICAL	R5 TAC 5	DIV S / Z / T	167.1125	131.8	167.1125	131.8	A	
9	TACTICAL	R5 TAC 6	STAGING	168.2375	131.8	168.2375	131.8	A	
10	AIR TO GROUND	A/G CMD	ALL DIVISIONS	168.7375	CSQ	168.7375		A	
11									
12	TACTICAL	VTAC 11	DIV H (ROUTE)	151.1375	156.7	151.1375	156.7	A	DIV H (ROUTE COMPLEX)
13	COMMAND	NIFC C37	ALL DIVISIONS (ROUTE)	172.5500	156.7	162.7750	156.7	A	ROUTE COMMAND NET
14	COMMAND	SHF TN12	FOREST NET	171.5750	CSQ	169.1000	127.3	A	SHF FOREST NET RPT TONE 12
15	TACTICAL	CALCORD	MEDICAL	156.0750	156.7	156.0750	156.7	A	
16	AIR GUARD	GUARD	All Divisions	168.6250	CSQ	168.6250	110.9	A	AIR GUARD - EMERG. USE ONLY
17									
18									
19									
20	AIR GUARD	GUARD	All Divisions	168.6250	0.0	168.6250	110.9	A	AIR GUARD - EMERG. USE ONLY

**SPECIAL INSTRUCTIONS: ROAD GROUP WILL USE THE TACTICAL THAT IS ASSIGNED TO THE DIVISION THEY ARE WORKING IN.**

Prepared By (Communications Unit Leader)

Incident Location

HYAMPOM, CA

Phil Shafer COML/Harold Reed COML T, Nor Cal Team 1

County TRINITY

Latitude, Longitude

N40° 37.399" W123° 27.92"

Deviation is assumed to be narrow band unless otherwise noted in the remarks. Mode refers to either "A" (analog), "D" (digital) or "M" (mixed mode). 9/4/2015 SW

# AIR OPERATIONS SUMMARY

Prepared By: Glenn Dietz

Prepared Date: Sept 4, 2015

Prepared Time: 1900

<b>1. INCIDENT NAME:</b> SOUTH COMPLEX (CA-SHF-2108) FORK COMPLEX (CA-SHF-2067)	<b>2. OPS PERIOD DATE:</b> Sept. 5, 2015	<b>START TIME:</b> 0700	<b>END TIME:</b> 2000	<b>SUNRISE:</b> 0643	<b>SUNSET:</b> 1940
<b>3. REMARKS (Safety Notes, Hazards, Air Operations Special Equipment, etc.):</b> Helicopters are being shared from the River Complex. Be aware of terrain influenced winds & wires crossing the Trinity River watershed as well as powerlines through the center of the South fire, East-West. **Reference SHF Air Hazard Map as well as South & Fork Air Ops Maps available on ftp site** Track where water was taken from. All buckets/tanks must be cleaned after dipping out of the Trinity River & before dropping on the South Complex.			<b>4. READY ALERT AIRCRAFT</b> MEDEVAC: H-553 ***CALCORD TONE 6*** INITIAL ATTACK: H-506		<b>5. TFR #:</b> NO TFR

6. PERSONNEL	NAME	PHONE #	7. FREQUENCIES	AM	FM	8. FIXED-WING- Type/ Make-Model/ N#/ Base
AOBD	Glenn Dietz	ICP: 530-628-4970 Cell: 530-227-0017	AIR/AIR RW-FF	125.325		AIRTANKERS- Order through RICC as needed.
ASGS			AIR/ AIR RW-FF			LEAD PLANES- Order through RICC as needed. ATGS AIRCRAFT- Order through RICC as needed.
HLCO			AIR TO GROUND		168.7375	
HEB2	Brian Bates	530-286-2249	COMMAND		SEE COMM PLAN	
HEB2(t)	Josh Wilson	530-286-2251	DECK		163.1000	
			TOLC			
			MEDIVAC ON		156.0750	
			CALCORD		156.0750	OTHER FW AIRCRAFT-
					156.0750	

9. HELICOPTERS (Use Additional Sheets as Necessary)

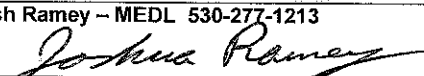
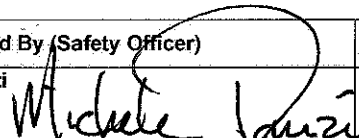
FAA N#	T	MAKE/ MODEL	BASE	AVAIL	START	REMARKS	FAA N#	T	MAKE/ MODEL	BASE	AVAIL	START	REMARKS
H-553	3	Bell 407	Trinity HLB	0700	0800	Pax, Bucket, PSD, Recon							
H-506	2	Bell 205 A1	Trinity HLB	0700	0800	Pax, Bucket, Recon							

10. TASK/ MISSION/ ASSIGNMENT (Type/ function includes: Air Tactical, Retardant, Recon, Personnel Transport, Bucket Operations, SAR, etc.)

TYPE/FUNCTION	NAME OF PERSONNEL OR CARGO (if applicable) or instructions for tactical aircraft	MISSION START	FLY FROM	FLY TO
Recon	As needed, order through AOBD.			
Water Dropping	As needed, order through AOBD.			

(3)

# MEDICAL PLAN (ICS 206 WF)

1. Incident/Project Name				2. Operational Period					
<b>South Complex</b>				Date/Time <b>9/5/15 0700-1900</b>					
3. Ambulance Services									
Name		Location		Phone & EMS Frequency		Advanced Life Support (ALS) Yes      No			
AMR medic 230 – Incident Amb.		Day – DP 19      Night - ICP		Contact on Command		X			
Hyampom Fire Dept. Ambulance		Hyampom, CA		911 or 530-623-8128		X			
Trinity County Ambulance		Hayfork, CA		911 or 530-623-8128		X			
4. Air Ambulance Services (COORDINATE with AIR AMBULANCES on CALCORD tone 6)									
Name		Phone		Type of Aircraft & Capability					
H-553      18 min eta		Contact air ops on Command		Assigned to incident and River complex					
Reach or PHI      30 min eta		911 or 530-623-8128 (Trinity Co. Sheriff)		Air Ambulance – Redding, CA Day/Night					
Coast Guard      Up to 1:15 hr eta		911 or 707-839-6100		Hoist Rescue – Eureka, CA Day/Night					
CHP      30 min eta		911 or 530-623-8128 (Trinity Co. Sheriff)		ALS Hoist Rescue – Redding, CA					
5. Hospitals									
Name & Level		GPS Datum – WGS 84 Degrees Decimal Minutes		Travel Time Air      Gnd		Helipad Yes      No		Address	
Trinity Hospital		Lat:		20 min	2 hrs	530-623-5541 x1	X	410 N. Taylor St. Weaverville, CA	
		Long:							
		VHF:							
St. Joseph Hospital		Lat:	N40°47.02	30 min	2 hrs	707-445-8121	X	2700 Dolbeer, Eureka, CA	
		Long:	W124°08.48						
		VHF:							
Shasta Regional Medical Center		Lat:	N40°35.08	35 min	3 hrs	530-244-5353	X	1100 Butte, Redding, CA	
		Long:	W122°23.25						
		VHF:							
UC Davis Level I Trauma/Burn Center		Lat:	N38°33.17	1.5 hrs	6 hrs	916-734-3636 916-734-3790	X	2315 Stockton Blvd. Sacramento, CA	
		Long:	W121°27.05						
		VHF:							
6. Division / Crew Pre-plan. Update and discuss with assigned resources daily.									
Crew EMTs & Equipment									
Fireline EMTs & Location									
Adv. Life Support?									
Air Hoist site:									
Lat: / Long:									
Helispot:									
Lat: / Long:									
Alternate no-fly plan:									
7. Remote Aid Stations									
<b>South Medical Unit– ICP</b> <b>Hyampom, CA</b> N40°37.514 W123°28.019		Point of Contact:			MEDL – Josh Ramey 530-628-4840				
		EMS Responders & Capability:			Frontline Medical – Advanced Life Support				
		Equipment Available on Site:			Medical supplies				
		Ambulance ETA :			Air – 30 min.      Ground – 10 min.				
8. Prepared By (Medical Unit Leader)				9. Date/Time		10. Reviewed By (Safety Officer)		11. Date/Time	
Josh Ramey – MEDL 530-277-1213 				9/4/15 1930		Michele Tanzi 		9/4/15 1930	

# Injury or Incident Communications Protocol

DECLARE:            Medical Emergency    or    Non-emergency Medical transport

Best transport method: (circle)    Ambulance    Helicopter    Vehicle

Location: (Div. & Lat / Long) \_\_\_\_\_  
GPS Format: WGS84 Degrees, Decimal minutes

Situation \_\_\_\_\_

Any special equipment required \_\_\_\_\_

Number of injured \_\_\_\_\_    Type of injuries \_\_\_\_\_

Closest pick up point (DP, Helispot) \_\_\_\_\_

Level of consciousness \_\_\_\_\_    Resp. \_\_\_\_\_    Pulse \_\_\_\_\_    BP \_\_\_\_\_    Weight \_\_\_\_\_  
 (alert & oriented x 1-4)

Injury \_\_\_\_\_    Agency (No Names) \_\_\_\_\_

Medical History/Allergies \_\_\_\_\_

## Air Transportation Triage

	Ground or Air Ambulance to Hosp.	Transport to Med Unit
<b>Mechanism</b>	Hit by a falling tree or large branch Fall of 10' or more Insect bite with shortness of breath Signs of heat stroke (hot, dry, disoriented) Burn Injury greater than 1% body area	Minor dehydration Cut or laceration with bleeding controlled Minor bites and Stings Minor burns
<b>Area Injured</b>	Significant Blunt or Penetrating Trauma to Head, Neck, Chest, Abdomen or pelvis Any Arm or Leg fracture above the Joint	Minor blunt trauma Minor penetrating trauma Extremity sprains and strains Simple fracture below elbow or knee
<b>Symptoms</b>	Disoriented Chest Pain or Shortness of Breath Weak or absent radial pulse Pale, cold and sweating	Alert and oriented No shortness of breath Good pulses

### Medivac Sites

H 1 - N40°41.674 x W123°26.164

H 2 - N40°42.833 x W123°31.051

H 3 - N40°44.081 x W123°30.039

Hyampom Airstrip (ICP) – N 40°37.514 x W123°28.019

### If air or ground ambulance is DELAYED:

Package and transport patient to rendezvous with ambulance. Re-route EMS helicopter to rendezvous point as appropriate.

### If Declaring an "Incident within the Incident"

The closest DIVS will respond to manage the incident. They are responsible for giving an accurate size up, ensuring scene safety, setting priorities and initiating an appropriate response.

The closest Safety Officer and Line EMS will respond to the scene to assist the DIVS. Secure site and begin initial investigation when situation is stabilized.



**SOUTH COMPLEX RISK ANALYSIS (215a)**  
**Day Shift, September 5<sup>th</sup>, 2015**

DIV	HAZARDOUS ACTIONS / CONDITIONS	MITIGATIONS / WARNINGS / REMEDIES	
All	Danger Trees	<ul style="list-style-type: none"> <li>• Follow the Hazard Tree Safety guidelines on pages 22 &amp; 23 of the IRPG.</li> <li>• Post lookouts or use a spotter in mop-up areas with personnel</li> <li>• Don't park vehicles or take breaks in high concentrations of hazard trees</li> <li>• Establish trigger points for disengagement during high wind events</li> </ul>	
ALL	Medical Emergencies	<p>~ Review, understand and discuss with your resources the Medical Plan in the IAP.</p> <p>~ <b>Develop Division/Crew Pre-Plan in block #6 on the Medical Plan and fill in necessary information to assist you with an incident within an incident.</b></p> <p>~ Base all operational decisions and activities on these 3 questions:</p> <ol style="list-style-type: none"> <li>1.) What are we going to do if someone gets hurt?</li> <li>2.) How will we get them out of here?</li> <li>3.) How long will it take to get them to a hospital?</li> </ol> <p>~ If the answers are insufficient, stop, re-assess and consider alternate strategies and tactics.</p> <p>~ <b>Have Alternate plan in place when aircraft is grounded due to visibility issues.</b></p> <p>~ If air or ground ambulance is delayed: package and transport patient to rendezvous with incoming ambulance.</p> <p>~ Re-route EMS helicopter to rendezvous point as appropriate</p> <p>~ <b>Be aware of Rotor Wash &amp; its effect on Fire behavior when the extraction point is next to an active fire edge.</b></p> <ul style="list-style-type: none"> <li>• If possible, <b>MOVE patient to an area with less fire activity</b></li> </ul>	
ALL	Hydration & Heat Illness	<ul style="list-style-type: none"> <li>• <b>Pre-hydrate, Re-hydrate! Dehydration is preventable.....Drink a <u>minimum</u> of ½ qt/hr</b></li> <li>• <b>Do NOT mix with water</b> or dilute electrolyte drink. It must be consumed as is for the body to absorb properly.</li> <li>• <b>Low volumes of dark, concentrated urine or painful urination indicate a serious need for rehydration, &amp; medical attention.</b></li> <li>• Pace work to avoid heat injuries</li> <li>• Refer to Medical Plan for additional <b>EMS care and Evacuation</b></li> </ul>	
ALL	Communications	<ul style="list-style-type: none"> <li>• <b>Ensure you have received the most current communications plan, and your radios have been cloned to it BEFORE heading out to your work area.</b></li> <li>• <b>Use human repeaters in areas with sketchy communications.</b></li> <li>• Refer to the 5 communication responsibilities listed on page ix in the 2014 IRPG</li> </ul>	
ALL	Aircraft Operations till 2000	<ul style="list-style-type: none"> <li>• <b>Review and discuss Aviation Watch Out Situations listed in IRPG pg 44</b></li> <li>• Ensure the mission is necessary</li> <li>• Evaluate risk vs gain for each mission/target</li> <li>• <b>Use aerial Supervision and maintain separation.</b></li> </ul>	
ALL	Fire Behavior	<ul style="list-style-type: none"> <li>• <b>Ensure a solid anchor point and flank.</b></li> <li>• <b>Use experienced LOOKOUTS under these conditions.</b></li> <li>• Monitor weather conditions. Be aware of visual indicators (clouds, WX obs., cold front passage)</li> <li>• Maintain adequate escape routes and safety zones. Set trigger points when appropriate. Communicate any changes.</li> <li>• Spotting Potential still exists...up to ¼ mile. "Eyes to the green"</li> </ul>	
ALL & ICP	Driving Hazards	<ul style="list-style-type: none"> <li>• <b>Reduce speed in Developed Areas.</b> Be watchful of local traffic &amp; pedestrians.</li> <li>• <b>SEAT BELTS ON...LIGHTS ON...BEFORE wheels turn!.....even in ICP</b></li> <li>• Reduce driving speeds to allow for reaction time lag.</li> <li>• Expect the unexpected around every curve.</li> <li>• Don't drive when fatigued. Adhere to agency driving regulations and guidelines.</li> <li>• Review and adhere to the driving protocols in today's IAP.</li> </ul>	
ALL	Heavy Equipment Operations	<ul style="list-style-type: none"> <li>• Ensure that communications are established with the operator</li> <li>• Make positive contact with the operator before approaching</li> <li>• Maintain a 50' to 100' exclusion area around equipment</li> <li>• Use a spotter when backing, qualified operators, and appropriate overhead</li> </ul>	
ALL	Biting, Stinging Insects, & Critters	<ul style="list-style-type: none"> <li>• If allergic to bee stings, let your DIVS &amp; Medic/EMT's know.</li> <li>• <b>Leave wildlife alone. Backhaul ALL Trash please.</b></li> </ul>	
ALL	Complacency	<ul style="list-style-type: none"> <li>• <b>Maintain focus! The job isn't done till we're home with our families</b></li> <li>• Don't let your operations fall into the "routine" category.</li> <li>• Maintain situational awareness in all activities.</li> <li>• The first step to an accident involves the false belief that experience makes you invulnerable.</li> </ul>	
<p align="center">INCIDENT NAME  <b>South Complex</b>  ICS 215a</p>		<p>DATE PREPARED:</p> <p align="center"><b>September 4<sup>th</sup>, 2015</b></p>	<p>OPERATIONAL PERIOD  <b>Saturday, Day Shift</b>  <b>9/5/2015, 0700 - 1900</b>  Prepared by: Tanzi – SOF1,  Barnhart – SOF2,  Mackensen – SOF2</p>
		<p>TIME PREPARED: <b>1930 HOURS</b></p>	

116



Today's discussion is from the  
Miscellaneous Category.

## ASH PIT HAZARDS

Ash pits are an inherent and hidden risk to wildland firefighters that can cause severe burns and injuries. Ash pits are created when a ground fire consumes underground fuels creating an empty space that is imperceptible from the surface.

- Environmental factors that increase the risk of ash pit formation after a wildfire:
  - Extensive root systems of trees and shrubs.
  - Deep duff or peat, the organic layer covering mineral soil.
  - Landscapes that have once been cultivated or manipulated by heavy equipment, old dozer piles, sawmills, timber sale yards or decking areas.
  - Small rodent holes that have become filled with decadent combustible debris, beaver holes near dams and stream beds, badger and coyote dens.
  - White ash is sometimes an indicator of ash pits as are swarms of hovering insects.
  - With the sun behind the suspected ash pit, look for small nearly translucent smokes that dissipate quickly above the ground.
  - Ash pits often give off the smell of incomplete combustion or of creosote burning.
  
- Mitigation measures to consider:
  - Identification of high risk landscape.
  - Identify and flag all hazardous discovered ash pits.

Resources: Safety Advisory: Ash Pit Safety, Risk Management Committee 2010

---

**Have an idea? Have feedback? Share it.**

ONLINE | MAIL: 6 Minutes For Safety Task Group • 3833 S. Development Ave • Boise, ID 83705 | FAX: 208-387-5250

6 Minutes Home

# South Complex

## Vehicle Use & Traffic Protocol



### Purpose

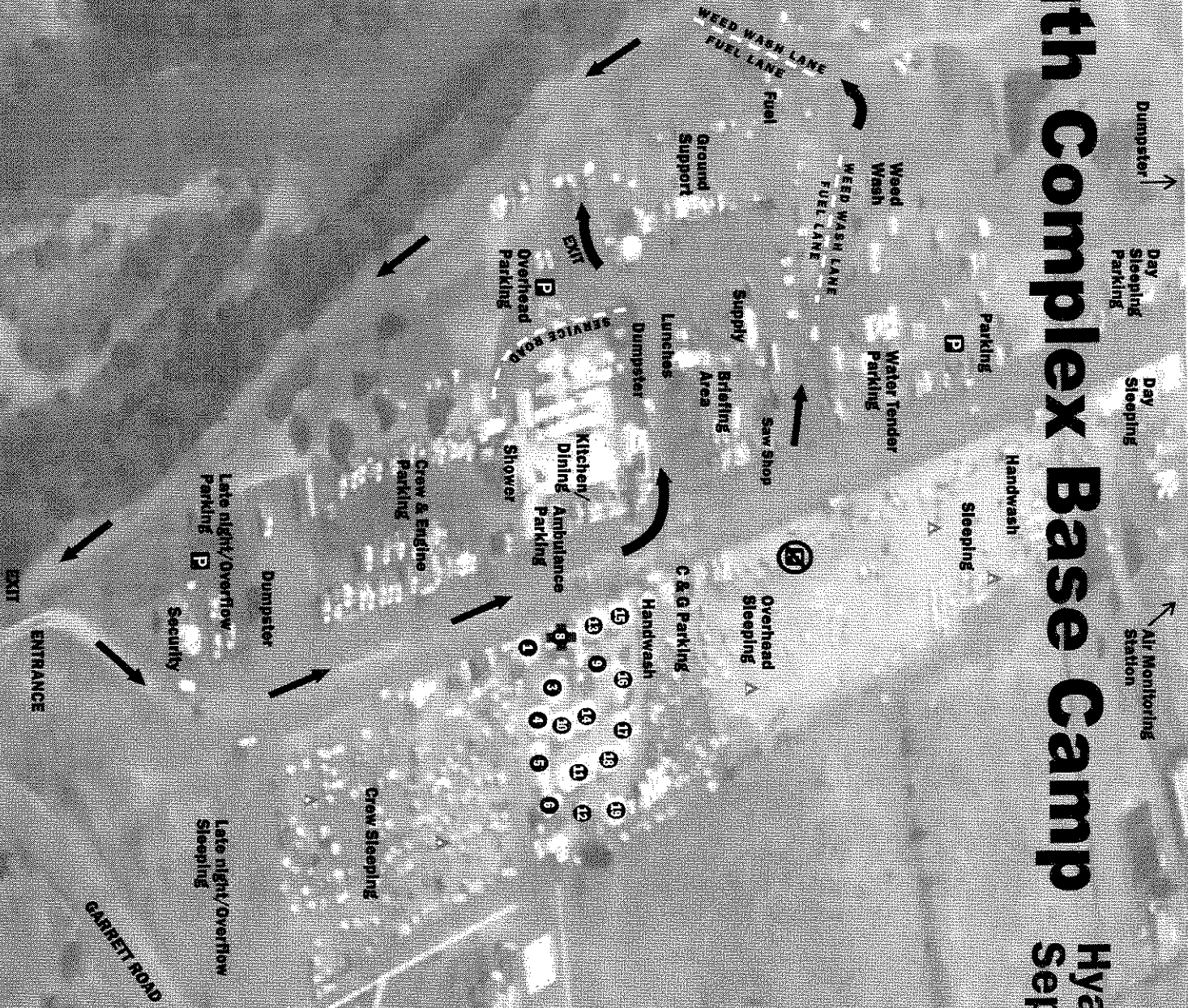
These protocols have been established in order to address the potential for vehicular incidents on the incident. Fatigue, complacency, distractions, and inattention to driving have all contributed to this problem.

The following guidelines will now be in effect.

- You are **REQUIRED** by **LAW** to **WEAR** your seatbelts. You've heard the phrase "Click it – or Ticket? Here on this fire it's "Click-it or GO HOME!" Before your wheels roll.
- Individuals **SHALL** only drive if they have had at least 8 consecutive hours off duty before beginning a shift.
- If you are too tired to operate your assigned vehicle then don't operate it! Recognize that fatigue affects you. Be honest with yourself about how tired you are and communicate this to your supervisor.
- If you find yourself dozing off while driving either stop and rest or get a relief operator.
- Keep in mind that when scouting a new area by vehicle, a driver often concentrates more on what they are scouting than how they are driving. If this is the case then drive a short distance, stop, and then evaluate or scout the area.
- Vehicles travelling uphill generally have the right of way. do not insist on that right of way.
- Keep in mind that larger vehicles like tenders and transports are more difficult to start on slopes, especially when under load. Do not complicate this problem by not pulling over in time for them to keep rolling.
- **In camp:** The maximum speed will be under 5 miles per hour and a backing guide will be required when reversing unless you are backing into an established parking space.
- **On public roads and the fireline:** The maximum speed on the paved public roads adjacent to the fire area will be 20 miles per hour for larger vehicles (water tenders, Type III engines, transports) and 25 miles per hour for smaller pick-ups, SUV's and cars. When passing both non-fire personnel and firefighters on foot the maximum speed will be under 5 miles per hour. On the fireline the maximum speed when passing parked vehicles (small or large) or personnel on foot will be under 5 miles per hour. Backing guides will be utilized whenever reversing unless backing into an established parking space.

# South Complex Base Camp

Hyampom, CA  
September 2015



- ① Check-in, Demob, Documentation
- ② Safety/Operations/Air Ops
- ③ Equipment Time, Comp/Claim
- ④ Personnel Time, Cost
- ⑤ Clerical
- ⑥ Frontline Medical
- ⑦ ISI Communications
- ⑧ READ
- ⑨ PSC, RES, SIT, IMET, FBAN, GIS
- ⑩ Satellite
- ⑪ Como/MED
- ⑫ Training
- ⑬ Information
- ⑭ Facilities/Food
- ⑮ Incident Command
- ⑯ Meeting Tent
- ⑰ Logistics/Ordering



## TRAINING SPECIALIST MESSAGE

### *Calling all trainees!!*

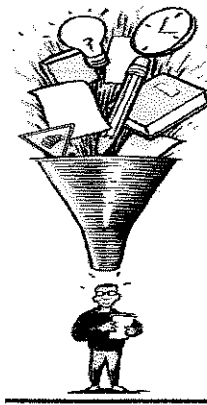
If you are here as a trainee and have not checked in with the Training Specialist please do so right away.

Training is located at the ICP, in the tent behind the Comm Trailer.

Bring your Task Book and Red Card with you.

### *Training watch out:*

Your home unit sent you out as a trainee, and the position is not on your red card.



"The palest ink is better than the best memory". Chinese Proverb

*Dominic Panno*  
*Incident Training Specialist*



