

MAD RIVER COMPLEX

CA-SRF-001433

P5J0JC (0510)




Friday August 7, 2015

DAY Operational Period

0600 - 2100


INCIDENT OBJECTIVES	1. Incident Name Mad River Complex	2. Date 8/06/15	3. Time 1700
4. Operational Period DAY 08/07/15 0600 – 2100			
5. General Control Objectives for the Incident (include alternatives) <u>Strategic Framework</u> Provide for aggressive fire suppression utilizing direct and indirect tactics and providing point protection to threatened structures within the fire area. The threat to life, property and values at risk remains high. Tactics which reflect limited firefighting resources on hand and utilizing existing control features in areas with a high probability of success should be applied. Potential for continued fire spread is high due to fuels, weather and time of season. <u>Leaders Intent</u> Provide the highest level of customer services to all involved with or impacted by the Mad River Complex. All incident assigned personnel should be prepared to take the appropriate actions regarding: <ul style="list-style-type: none"> • Personal interactions internal and external to the incident management organization • Personal safety and the safety of others • Response to any incident-within-an-incident <u>Objectives</u> <ul style="list-style-type: none"> • Provide for Firefighter and Public safety through hazard recognition and application of the risk management process. • Reduce the threat to private property, residences and infrastructure through the application of direct suppression tactics. • Protect natural resources through utilization of control features that offer a high probability of success. • Engage in fire suppression operations that are cost effective, but commensurate with values at risk. • Protect wilderness values and botanical resources by ensuring Minimum Impact Suppression Tactics (MIST) are applied. 			
6. Weather Forecast for Period <ul style="list-style-type: none"> • WEATHER: Partly cloudy with areas of smoke. Slight chance of showers and thunderstorms. Areas of smoke through the day. • TEMPERATURES: Max Lower Elevations....82-90F; ridges....78-83F. 24 HR Trend (down 2-3) • HUMIDITY: Min Lower Elevation....20-28%; ridges....25-35%. 24 HR Trend (up 5%) • SLOPE/VALLEY - Variable less than 3 mph in the morning becoming Upcanyon / Upslope 3 to 5 mph with gusts to 10 mph . • RIDGETOP- Variable less than 5 mph the morning becoming. West to Southwest 4 to 7 mph in the afternoon. Gusts 12 mph in the afternoon. • INVERSIONS/STABILITY: Dense smoke in the morning. Becoming slightly unstable in the aftn. 			
7. General Safety Message <ul style="list-style-type: none"> • Hazardous driving – NARROW SECTIONS OF HWY 36 – 30 MPH MAX • Ensure all know frequency and protocol for contacting resources * Utilize the ICS 205 and 204 • Follow "Aviation Watch-Out Situations" in IRPG (2014) pg.44. 			
8. Attachments (mark if attached)			
<input checked="" type="checkbox"/> Organization List - ICS 203	<input checked="" type="checkbox"/> Medical Plan - ICS 206	<input checked="" type="checkbox"/> Safety Message	
<input checked="" type="checkbox"/> Div. Assignment Lists - ICS 204	<input checked="" type="checkbox"/> Incident Map	<input checked="" type="checkbox"/> Air Ops Summary ICS 220	
<input checked="" type="checkbox"/> Communications Plan - ICS 205	<input checked="" type="checkbox"/> Fire Weather Forecast	<input checked="" type="checkbox"/> Base Camp Map	
<input checked="" type="checkbox"/> READ Message	<input checked="" type="checkbox"/> ICS 214	<input checked="" type="checkbox"/> Fire Behavior	
9. Prepared by (Planning Section Chief) Tim Baal/ Dennis Cooper	10. Approved by (Incident Commander) Mike Minton <i>Carter M. Joseph for:</i>		

ORGANIZATION ASSIGNMENT LIST (ICS-203)

1. Incident Name: MAD RIVER COMPLEX		2. Operational Period: DAY		Date From: 8/07/2015		Date To: 8/07/2015	
				Time From: 0600		Time To: 2100	
3. Incident Commander(s) and Command Staff:				7. Operations Section:			
Incident Commander	MIKE MINTON			Chief	CARL SCHWOPE		
Deputy IC	CARLTON JOSEPH			Planning Ops	DON SMITH		
Safety Officer	MARTY HAMEL / DAVE MORTON CHARLOTTE JORDAN (T)			36 Branch			
Public Information Officer	STEVE KLIEST / MARK SAVAGE			Branch Director	CRAIG WARREN		
Liaison Officer	RICK ALPERT / FREDERICK FLORES			Division/Group	B / D	RON SMITH	
				Division/Group	F	JEB PRONTO	
				Division/Group	FOREST GLEN S.P.G.	JON LEE	
4. Agency/Organization Representatives:				RUTH Branch			
OES	GARY HUMPHREY			Branch Director	KELLY MARTIN		
CHP	TAMI McCANLESS			Division/Group	A	ERIC NOLAN / SEAN WHALEN (T)	
SOUTH TRINITY VFD	DON STEWART / BILL GERMAN			Division/Group	G	KIM OLSON	
TRINITY SO	JAKE HESS			Division/Group	S	FRED BURRIS	
READ	SCOTT HAGERTY			Division/Group	W	MATT TELLES	
READ	RAYMA COOLEY			Division/Group	RUTH LAKE S.P.G	ANDREW LANG / BRANDYN HARVEY (T)	
				LASSIC Branch			
5. Planning Section:				Branch Director	JOE REYES		
Chief	TIM BAAL / RICK LEUCK (T)			Division/Group	A A	MARK JAMIESON	
Deputy	DENNIS COOPER			Division/Group	L L	JAMES SNOW	
Resources Unit	ASHBY / SWITZLER / THOMPSON / MATYE			Division/Group	V V	CALEB FINCH	
Situation Unit	MIKE MC HARGUE / TAD MORLOCK DAVID SOLDAVINI (T)			Division/Group	YY		
Demobilization Unit				Division/Group			
Human Resources				Division/Group			
Fire Behavior Analyst	STEVE PAES			Contingency / Staging			
GISS	EVAN CONKLIN / JASON DUKE (T) / MELISSA VARGAS (T)			Division/Group			
Training Specialist	ALLISON JACKSON			Division/Group			
IMET	MATT MEHLE			Division/Group			
6. Logistics Section:				Division/Group			
Chief	TONY MARTINEZ/ JIM ECKROTH (T) TERESA STELMAN (T)						
Deputy				Air Operations Branch			
Support Branch				Air Ops Branch Dir.	JOHN KEESEE		
Supply Unit	MIKE BRADFORD			Air Support Grp Supervisor	CRAIG DADO		
Ordering Unit	MARIE BUTLER			Air tactical Group Supervisor	MIKE STOUT		
Facilities Unit	WALLY GROGAN			8. Finance/Administration Section:			
Ground Support Unit	JOHN BADARACCO / FRED SIMONDS			Chief	THERESA FORK		
Service Branch				Deputy			
Director				Time Unit			
Communications Unit	GREG ELY			Procurement Unit	CHRISTOPHER FORD		
Medical Unit	ROBERT RUSSELL			Comp/Claims Unit	ANNMARIE CARLSON		
Food Unit	EDWIN MAYBERRY/DALE THOMPSON /WHITNEY VONADA(t)			Cost Unit	ROGER SIEMERS		
9. Date/Time Prepared: 8/06/15 1700		Prepared By: ERIC MATYE, RESL			Signature: 		

Fire Weather Forecast

FORECAST NO: 6
PREDICTION FOR: DAY SHIFT
SHIFT DATE: Aug 7, 2015
TIME AND DATE
FORECAST ISSUED: Aug 6, 2015 2000 PDT

NAME OF FIRE: Mad River Complex
UNIT: Six Rivers NF
SIGNED: Matt Mehle 
Incident Meteorologist

*****POSSIBLE THUNDERSTORMS TODAY*****

WEATHER DISCUSSION: *A passing storm system to the south will bring a slight chance for thunderstorms to Mad River Complex today. The best chance for storms will be during the afternoon. Developed storms will be capable of producing lightning and gusty/erratic winds.*

WEATHER FORECAST FOR FRIDAY:

WEATHER: Partly cloudy with areas of smoke. Slight chance of showers and thunderstorms. Areas of smoke through the day.

TEMPERATURES: Max Lower Elevations....82-90F; ridges....78-83F. **24 HR Trend** (down 2-3)

HUMIDITY: Min Lower Elevation....20-28%; ridges....25-35%. **24 HR Trend** (up 5%)

SLOPE/VALLEY - Variable less than 3 mph in the morning becoming Upcanyon / Upslope 3 to 5 mph with gusts to 10 mph .

RIDGETOP- Variable less than 5 mph the morning becoming. West to Southwest 4 to 7 mph in the afternoon. Gusts 12 mph in the afternoon.

INVERSIONS/STABILITY: Dense smoke in the morning. Becoming slightly unstable in the aftn. **LAL:2**

WEATHER FORECAST FOR FRIDAY NIGHT:

WEATHER: Developed storms quickly diminish. Otherwise, partly cloudy. Smoke settling into the canyons after 2200-0000.

TEMPERATURES: Min 48-56-F.

HUMIDITY: Max Valley bottom...85-95%; Ridges...70-80%.

20-FOOT WIND:

SLOPE/VALLEY - Upslope 2-5 with gusts to 7 mph in the evening...becoming downcanyon/downslope to less than 4 mph after 2200.

RIDGETOP - West 4 to 7 mph with gusts to 9 mph in the evening and early part of night...becoming variable less than 4 mph overnight.

INVERSIONS/STABILITY: Becoming more stable overnight with smoke settling late. **LAL: 2 becoming 1**

EXTENDED FORECAST:

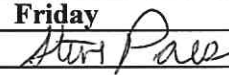
SATURDAY AND SUNDAY... Partly cloudy with areas of smoke. Max temps...80s. Min temps 50s. Min RH 20-35%. Northwest winds 5 to 15 mph.

REALTIME RAWS INFO for MAD RIVER COMPLEX

Location-----	Name
Div A -	MAD RIVER
Div D -	FRIEND MTN
Div G -	RUTH



FIRE BEHAVIOR FORECAST

FORECAST NUMBER: 11	TYPE OF FIRE: Wildland Fire
FIRE NAME: Mad River Complex	OPERATIONAL PERIOD: Day
DATE / TIME ISSUED: Aug 6, 2015 2000	DATE: Aug 7, 2015 Friday
UNIT: Six Rivers NF / Mad River	SIGNED:  Steve Paes FBAN

INPUTS

WEATHER SUMMARY:

Partly to mostly sunny with areas of smoke. 20% chance of thunderstorms.

LAL =2 (Cumulus clouds are common but only a few reach the towering cumulus stage. A single thunderstorm must be confirmed in the observation area. The clouds produce mainly virga, but light rain will occasionally reach the ground.

Lightning is very infrequent.)

Max. Temperatures: 92 valleys to 82 ridge tops.

Min. Relative Humidity: 19% valleys to 30% ridgetops.

Wind: Slope/Valley- light and variable in the morning, becoming upcanyon/upslope 2-4 mph with gusts to 6 mph.

Ridgetop Winds- Variable 3-5 mph becoming West/Southwest 4-8 mph with gusts to 12 mph.

GENERAL:

The fire is burning timber Fuels with some brush and grass intermix. Manzanita, Mixed Pine, Cedar and Douglas Fir are throughout. The primary carrier of surface fire is heavy forest litter with a shrub or small tree understory.

Live Fuel Moisture: Timber 150% Shrubs 80%. Low fuel moisture levels in the aerial fuels will contribute to torching.

Fire spread has been primarily topography driven and should continue again during today's shift. The predominant fire spread has been surface fire backing downhill. Roll out on steep slopes is contributing to rates of spread. Where flanking movement goes across slope under unburned fuels, the fire can transition to head fire with short crown runs if ladder fuels are present. Torching and short duration crown fire runs may also develop where slope and winds align. Past significant runs were with slope and wind alignment from thunderstorm winds.

Rates of spread: head fire = 3-8ch/hr with backing 1-3 ch/hr.

Probability of Ignition (PIG) = 50% shaded fuels, 70% exposed fuel

Spotting distances of up to ½ mile have been observed.

Dead fuel moisture contents: 10hr = 5% , 100hr and 1000hr =10%

SPECIFIC:

All Divisions:

Expect the fires to continue backing downslope. Progressions of 10-20 chs. have been observed on days with similar weather.

Anticipate torching during the afternoon, especially if smoke lifts from your part of the fire and skies clear. Short crown runs with rapid rates of spread can occur when rollout moves burning material downslope of the fire front and where slopes and wind align. Portions of the fire near the bottom of a slope have potential for increased fire behavior if slope reversal occurs.

When aligned with slopes, gusty winds associated with a thunderstorm can cause rates of spread up to 20 ch/hr and flame lengths of 10 feet. If ladder fuels are present the surface fire would transition to crown fire. Observed rate of spread of crown fire earlier in the incident under similar conditions was up to 40 ch/hr.

AIR OPERATIONS

Watch for gusty and erratic winds associated with thunderstorm development.

Sunrise- 0616 and Sunset- 2023


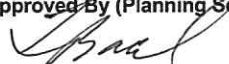
SAFETY

Be heads up for rapidly changing fire behavior due to erratic thunderstorm winds.

Watch for fire weakened snags as well as live trees that have had roots burned off.

The complete consumption of fuels increases the risk of rocks becoming dislodged and rolling down slopes.

Division/Group Assignment List (ICS 204 WF)

1. Incident Name:			3.			
MAD RIVER COMPLEX			Branch:		Division/Group:	
2. Operational Period: DAY			36		B/D	
Date/Time From: 08/07/2015 0600 FRI		Date/Time To: 08/07/2015 2100 FRI				
4. Operations Personnel						
OPERATIONS CHIEF		CARL SCHWOPE		BRANCH DIRECTOR		
				CRAIG WARREN		
DIVISION/GROUP SUPERVISOR		RON SMITH		AIR ATTACK SUPERVISOR		
				MIKE STOUT		
5. Resources Assigned this Period						
Strike Team / Task Force / Resource Designator		LWD	Leader	Number Persons	Drop Off PT./Time	Pick Up PT./Time
ENGINE S/T - T1 - 2277A (E-51)		08/15	EMIL PICCHI	22	DP19/0800	DP19/2000
SOF2			PETER MOURTSEN	1	DP19/0800	DP19/2000
FEMT			TYLER T MUNTZ	1	DP19/0800	DP19/2000
FEMP		08/20	SCOTT HAMILTON	1	DP19/0800	DP19/2000
READ			FRED LEVITAN	1	DP19/0800	DP19/2000
6. Control Operations/Work Assignments:						
Patrol and monitor along Hwy 36 from the branch break to the Division D/F break. Division objective is to control the fire that threatens Hwy 36. Mop up and patrol any slopovers to limit fire spread.						
7. Special Instructions:						
Use caution with traffic along Hwy 36. Use extreme caution adjacent to the burning snag on Hwy 36 in Section 15. Utilize command frequency to communicate with night shift resources.						
8. Division/Group Communication Summary						
Function	Channel	RX Frequency N/W	RX Tone/NAC	TX Frequency N/W	TX Tone/NAC	Mode
COMMAND	1	168.1000	0.0	170.4500	123.0	A
TACTICAL	6	166.7250	0.0	166.7250	0.0	A
AIR TO GROUND CMD	14	169.1500	0.0	169.1500	0.0	A
9. Prepared By (Resource Unit Leader)			Approved By (Planning Section Chief)		Date	Time
					08/06/2015	2100

Division/Group Assignment List (ICS 204 WF)

1. Incident Name:			3.			
MAD RIVER COMPLEX			Branch:		Division/Group:	
2. Operational Period: DAY			36		F	
Date/Time From: 08/07/2015 0600 FRI		Date/Time To: 08/07/2015 2100 FRI				
4. Operations Personnel						
OPERATIONS CHIEF		CARL SCHWOPE		BRANCH DIRECTOR		
				CRAIG WARREN		
DIVISION/GROUP SUPERVISOR			JEB PRONTO		AIR ATTACK SUPERVISOR	
					MIKE STOUT	
5. Resources Assigned this Period						
Strike Team / Task Force / Resource Designator		LWD	Leader	Number Persons	Drop Off PT./Time	Pick Up PT./Time
CREW - T1 - DALTON IHC		08/07	ALAN LIAU	22	DP22/0730	DP22/2100
CREW - T2IA - 13124 - NORTH REFORESTATION INC		08/15	JOSE RINCON	20	DP22/0730	DP22/2100
ENGINE - S/T - T3 - A3S STRIKE TEAM 1			. POLACEK		DP22/0730	DP22/2100
ENG - T3 - BLM 3134		08/15	TEMO BALTAZAR	5	DP22/0730	DP22/2100
DOZER - T2 - ENF3		08/14	DANO LANGENDERFER	3	DP22/0730	DP22/2100
DOZER - T2 - (E-14)			STAN	2	DP22/0730	DP22/2100
SKIDDER - T1 - CRANE MILLS-0248 (E-193)		08/19	FRANK BARRON	2	DP22/0730	DP22/2100
WATER TENDER - T2 - FS 3			RYAN MEANS, NIC MASSETONI	2	DP22/0730	DP22/2100
WATER TENDER - SUPPORT - T1 - LET ER BUCK TRUCKING		08/20	STEVE LASSEN	1	DP22/0730	DP22/2100
TFLD		08/15	G. ABBOTT	1	DP22/0730	DP22/2100
HEQB		08/18	KEVIN DANIEL SHERRETZ	1	DP22/0730	DP22/2100
HEQB		08/20	CODY COX (T)	1	DP22/0730	DP22/2100
FOBS		08/18	SCOTT D POSNER	1	DP22/0730	DP22/2100
FOBS		08/18	CODY ALLEN SPENCER (T)	1	DP22/0730	DP22/2100
FEMP		08/20	SCOTT HAMILTON	1	DP22/0730	DP22/2100
FEMT			TYLER T MUNTZ	1	DP22/0730	DP22/2100
READ			FRE LEVITAN	1	DP22/0730	DP22/2100
6. Control Operations/Work Assignments:						
Utilize resources to construct indirect hand line and dozer line from Hwy 36 to the branch break on Horse Ridge. Develop tactics to prevent fire from crossing Road 01S26.						
7. Special Instructions:						
8. Division/Group Communication Summary						
Function	Channel	RX Frequency N/W	RX Tone/NAC	TX Frequency N/W	TX Tone/NAC	Mode
COMMAND	1	168.1000	0.0	170.4500	123.0	A
TACTICAL	10	154.2875	156.7	154.2875	156.7	A
AIR TO GROUND CMD	14	169.1500	0.0	169.1500	0.0	A
9. Prepared By (Resource Unit Leader)			Approved By (Planning Section Chief)		Date	Time
<i>Jackie Switzer</i>			<i>Shack</i>		08/06/2015	2100

Division/Group Assignment List (ICS 204 WF)

1. Incident Name:				3.			
MAD RIVER COMPLEX				Branch:		Division/Group:	
2. Operational Period: DAY				36		F	
Date/Time From: 08/07/2015 0600 FRI		Date/Time To: 08/07/2015 2100 FRI					
4. Operations Personnel							
OPERATIONS CHIEF		CARL SCHWOPE		BRANCH DIRECTOR		CRAIG WARREN	
DIVISION/GROUP SUPERVISOR		JEB PRONTO		AIR ATTACK SUPERVISOR		MIKE STOUT	
7. Special Instructions:							
<p>Coordinate resource immediate needs through Branch Coordinate firing supply and hose/appliance needs with supply Coordinate with PG&E for natural gas line concerns Utilize command frequency to communicate with night shift resources.</p>							
8. Division/Group Communication Summary							
Function	Channel	RX Frequency N/W	RX Tone/NAC	TX Frequency N/W	TX Tone/NAC	Mode	
COMMAND	1	168.1000	0.0	170.4500	123.0	A	
TACTICAL	10	154.2875	156.7	154.2875	156.7	A	
AIR TO GROUND CMD	14	169.1500	0.0	169.1500	0.0	A	
9. Prepared By (Resource Unit Leader)				Approved By (Planning Section Chief)		Date	Time
<i>Jackie Switzer</i>				<i>[Signature]</i>		08/06/2015	2100

Division/Group Assignment List (ICS 204 WF)

1. Incident Name:			3.			
MAD RIVER COMPLEX			Branch: 36		Division/Group: FOREST GLEN S.P.G.	
2. Operational Period: DAY						
Date/Time From: 08/07/2015 0600 FRI		Date/Time To: 08/07/2015 2100 FRI				
4. Operations Personnel						
OPERATIONS CHIEF		CARL SCHWOPE		BRANCH DIRECTOR		CRAIG WARREN
DIVISION/GROUP SUPERVISOR		JONATHAN LEE		AIR ATTACK SUPERVISOR		MIKE STOUT
5. Resources Assigned this Period						
Strike Team / Task Force / Resource Designator		LWD	Leader	Number Persons	Drop Off PT./Time	Pick Up PT./Time
ENGINE S/T - T1 - 1280A				22	FOREST GLEN/0800	FOREST GLEN/2000
FEMT			TYLER T MUNTZ	1	FOREST GLEN/0800	FOREST GLEN/2000
FEMP		08/20	SCOTT HAMILTON	1	FOREST GLEN/0800	FOREST GLEN/2000
6. Control Operations/Work Assignments:						
Develop structure defense plans for the Forest Glen community and the improved properties along Hwy 36. Resources to identify hazard mitigation for community values at risk with goal to limit fire impact.						
7. Special Instructions:						
Coordinate with Division D/F for relevant PGE concerns and actions. Utilize command frequency to communicate with night shift resources. Determine vehicle access and water points for structure defense needs.						
8. Division/Group Communication Summary						
Function	Channel	RX Frequency N/W	RX Tone/NAC	TX Frequency N/W	TX Tone/NAC	Mode
COMMAND	1	168.1000	0.0	170.4500	123.0	A
TACTICAL	8	168.2500	0.0	168.2500	0.0	A
AIR TO GROUND CMD	14	169.1500	0.0	169.1500	0.0	A
9. Prepared By (Resource Unit Leader)			Approved By (Planning Section Chief)		Date	Time
<i>Jackie Switzer</i>			<i>[Signature]</i>		08/06/2015	2100

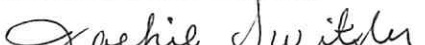

Division/Group Assignment List (ICS 204 WF)

1. Incident Name:			3.			
MAD RIVER COMPLEX			Branch:		Division/Group:	
2. Operational Period: DAY			RUTH		A	
Date/Time From: 08/07/2015 0600 FRI		Date/Time To: 08/07/2015 2100 FRI				
4. Operations Personnel						
OPERATIONS CHIEF		CARL SCHWOPE		BRANCH DIRECTOR		
				KELLY MARTIN		
DIVISION/GROUP SUPERVISOR		ERIC NOLAN SEAN WHALEN (T)		AIR ATTACK SUPERVISOR		
				MIKE STOUT		
5. Resources Assigned this Period						
Strike Team / Task Force / Resource Designator		LWD	Leader	Number Persons	Drop Off PT./Time	Pick Up PT./Time
ENGINE - T3 - UTAH COUNTY FD - ENGINE 11		08/15	P. CARLSON / J. LANE(T)	5	DP20/0800	DP20/2000
ENGINE - T3 - LONE PEAK ENG 1668		08/15	THATCHER / BERG (T)	5	DP20/0800	DP20/2000
ENGINE - T3 - SARATOGA SPRINGS FD - E-263		08/15	B. COOMBS / BECK (T)	3	DP20/0800	DP20/2000
ENGINE - T3 - AZ- ENGINE 692		08/19	B. RUSSO	4	DP20/0800	DP20/2000
ENGINE - T3 - AZ- PHOENIX - E-131		08/19	J GUAD / L VASQUEZ (T)	4	DP20/0800	DP20/2000
DOZER - T2 - DILLON			DILLON	2	DP20/0800	DP20/2000
HEQB			CURRAW	1	DP20/0800	DP20/2000
SOFR		08/16	ANTHONY RIVERS(T)	1	DP20/0800	DP20/2000
6. Control Operations/Work Assignments:						
Secure and mop up fire perimeter from prior firing operations along the 01S40 Rd, downslope to the Dylan Ranch. Allow fire to back down to containment lines where safe to do so. Support mop up operations behind structures along the west side of Ruth Lake. Conduct firing operations to remove unburned fuel between main fire and control lines as necessary.						
7. Special Instructions:						
Request assistance from Ruth Lake S.P.G. or 36 Branch as required. Backhaul excess equipment and trash. Utilize command frequency to contact night shift resources.						
8. Division/Group Communication Summary						
Function	Channel	RX Frequency N/W	RX Tone/NAC	TX Frequency N/W	TX Tone/NAC	Mode
COMMAND	1	168.1000	0.0	170.4500	123.0	A
TACTICAL	4	166.5500	0.0	166.5500	0.0	A
AIR TO GROUND CMD	14	169.1500	0.0	169.1500	0.0	A
9. Prepared By (Resource Unit Leader)			Approved By (Planning Section Chief)		Date	Time
<i>Jackie Switzer</i>			<i>Thad</i>		08/06/2015	2100

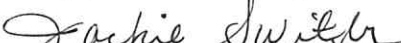

Division/Group Assignment List (ICS 204 WF)

1. Incident Name:			3.			
MAD RIVER COMPLEX			Branch:		Division/Group:	
2. Operational Period: DAY			RUTH		G	
Date/Time From: 08/07/2015 0600 FRI	Date/Time To: 08/07/2015 2100 FRI					
4. Operations Personnel						
OPERATIONS CHIEF		CARL SCHWOPE		BRANCH DIRECTOR		
				KELLY MARTIN		
DIVISION/GROUP SUPERVISOR		KIM OLSON		AIR ATTACK SUPERVISOR		
				MIKE STOUT		
5. Resources Assigned this Period						
Strike Team / Task Force / Resource Designator	LWD	Leader		Number Persons	Drop Off PT./Time	Pick Up PT./Time
CREW - T2 IA - HEART LAKE	08/14	CYRUS GALVAN			DP22/0800	DP22/2000
CREW - T2IA - MQ FRANCO REFORESTATION	08/15	J. QUEVDO		20	DP22/0800	DP22/2000
ENGINE S/T - T1 - 2275A	08/15	CHRIS CAMPGNA			DP22/0800	DP22/2000
ENGINE S/T - T1 - 2126A	08/17	MICHAEL ST.JOHN			DP22/0800	DP22/2000
FOBS	08/17	BRIAN STUPAK		1	DP22/0800	DP22/2000
FOBS	08/18	MICHAEL MUCK (T)		1	DP22/0800	DP22/2000
SOFR	08/14	JOHN MARTINEZ		1	DP22/0800	DP22/2000
6. Control Operations/Work Assignments:						
Hold, monitor, mop up where prior firing operations have been completed from the branch break on Horse Ridge to the Division A/G break to prevent further fire spread.						
7. Special Instructions:						
Coordinate with Ruth Lake S.P.G for additional resource needs. Backhaul excess equipment and trash. Utilize command frequency to contact night shift resources.						
8. Division/Group Communication Summary						
Function	Channel	RX Frequency N/W	RX Tone/NAC	TX Frequency N/W	TX Tone/NAC	Mode
COMMAND	1	168.1000	0.0	170.4500	123.0	A
TACTICAL	9	159.4725	156.7	159.4725	156.7	A
AIR TO GROUND CMD	14	169.1500	0.0	169.1500	0.0	A
9. Prepared By (Resource Unit Leader)			Approved By (Planning Section Chief)		Date	Time
<i>Jackie Switzky</i>			<i>Stual</i>		08/06/2015	2100

Division/Group Assignment List (ICS 204 WF)

1. Incident Name:			3.			
MAD RIVER COMPLEX			Branch:		Division/Group:	
2. Operational Period: DAY			RUTH		S	
Date/Time From: 08/07/2015 0600 FRI		Date/Time To: 08/07/2015 2100 FRI				
4. Operations Personnel						
OPERATIONS CHIEF		CARL SCHWOPE		BRANCH DIRECTOR		
				KELLY MARTIN		
DIVISION/GROUP SUPERVISOR		FRED BURRIS		AIR ATTACK SUPERVISOR		
				MIKE STOUT		
5. Resources Assigned this Period						
Strike Team / Task Force / Resource Designator		LWD	Leader	Number Persons	Drop Off PT./Time	Pick Up PT./Time
CREW - T2 - NORTH PACIFIC FORESTRY			SALVADOR PEREZ ARELLANO	20	DP30/0800	DP30/2000
ENGINE S/T - T1 - 1800A		08/17		20	DP30/0800	DP30/2000
ENGINE S/T - T1 - 1810A		08/17		20	DP30/0800	DP30/2000
ENGINE - T3 - TONTO E-12-28			A. ROSE		DP30/0800	DP30/2000
SOFR		08/16	JOHN FOLEY	1	DP30/0800	DP30/2000
6. Control Operations/Work Assignments:						
Monitor, mop up prior to firing operations from the Division S/W break along the Southern edge of the Gobbler to prevent further fire spread. Patrol and monitor fire along Van Duzen Road to approximately DP50.						
7. Special Instructions:						
Coordinate with Ruth Lake S.P.G. for additional resource needs. Backhaul excess equipment and trash. Communicate on command frequency with night resources.						
8. Division/Group Communication Summary						
Function	Channel	RX Frequency N/W	RX Tone/NAC	TX Frequency N/W	TX Tone/NAC	Mode
COMMAND	1	168.1000	0.0	170.4500	123.0	A
TACTICAL	6	166.7250	0.0	166.7250	0.0	A
AIR TO GROUND CMD	14	169.1500	0.0	169.1500	0.0	A
9. Prepared By (Resource Unit Leader)			Approved By (Planning Section Chief)		Date	Time
					08/06/2015	2100

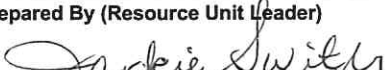

Division/Group Assignment List (ICS 204 WF)

1. Incident Name:			3.			
MAD RIVER COMPLEX			Branch:		Division/Group:	
2. Operational Period: DAY			RUTH		W	
Date/Time From: 08/07/2015 0600 FRI		Date/Time To: 08/07/2015 2100 FRI				
4. Operations Personnel						
OPERATIONS CHIEF		CARL SCHWOPE		BRANCH DIRECTOR		
				KELLY MARTIN		
DIVISION/GROUP SUPERVISOR		MATT TELLES		AIR ATTACK SUPERVISOR		
				MIKE STOUT		
5. Resources Assigned this Period						
Strike Team / Task Force / Resource Designator		LWD	Leader	Number Persons	Drop Off PT./Time	Pick Up PT./Time
CREW - T2IA - MQ FRANCO - C7			A. CASTRO	20	DP30/0800	DP30/2000
CREW - T2IA - MQ FRANCO - C9			I. TORRES	20	DP30/0800	DP30/2000
CREW - T1 - MAD RIVER IHC		08/15	CHARLES HAIR	19	DP30/0800	DP30/2000
ENGINE - T3 - SOUTHERN TRINITY 5733					DP30/0800	DP30/2000
ENGINE - T4 - PATRICK ENVIRONMENTAL			A. DRAKE		DP30/0800	DP30/2000
ENGINE - T3 - TNF 28					DP30/0800	DP30/2000
WATER TENDER - T2 - SOUTHERN TRINITY 5144					DP30/0800	DP30/2000
WT - T2 - BERRY CONTRUCTION					DP30/0800	DP30/2000
DOZER - T2 TOM'S EARTHMOVING & EXCAV. INC.		08/15	TOM FUNES	1	DP30/0800	DP30/2000
DOZER - T2			JASON WILLBURN		DP30/0800	DP30/2000
HEQB			MARTOME		DP30/0800	DP30/2000
HEQB		08/19	JASON E MURIEEN (T)	1	DP30/0800	DP30/2000
TFLD			SHANE ZIMMERMAN	1	DP30/0800	DP30/2000
TFLD			ESQIVEL		DP30/0800	DP30/2000
SOF2 O-19			RON SASS	1	DP30/0800	DP30/2000
READ		08/20	PAUL S MOREY	1		
6. Control Operations/Work Assignments:						
Monitor, mop up along West Van Duzen Road. Prep Ridge Road 01N03 for firing from the dozer line at the 01S26 Road to the north for approximately one mile. Prep dozer line between the Ridge Road 01N03 and West Van Duzen Road for future firing operations.						
7. Special Instructions:						
Backhaul excess equipment and trash. Communicate on command frequency with night shift resources.						
8. Division/Group Communication Summary						
Function	Channel	RX Frequency N/W	RX Tone/NAC	TX Frequency N/W	TX Tone/NAC	Mode
COMMAND	1	168.1000	0.0	170.4500	123.0	A
TACTICAL	7	166.7750	0.0	166.7750	0.0	A
AIR TO GROUND CMD	14	169.1500	0.0	169.1500	0.0	A
9. Prepared By (Resource Unit Leader)			Approved By (Planning Section Chief)		Date	Time
					08/06/2015	2100

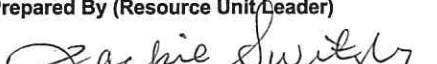

Division/Group Assignment List (ICS 204 WF)

1. Incident Name:			3.			
MAD RIVER COMPLEX			RUTH		RUTH LAKE S.P.G.	
2. Operational Period: DAY						
Date/Time From: 08/07/2015 0600 FRI		Date/Time To: 08/07/2015 2100 FRI				
4. Operations Personnel						
OPERATIONS CHIEF		CARL SCHWOPE		BRANCH DIRECTOR		KELLY MARTIN
DIVISION/GROUP SUPERVISOR		ANDREW LANG BRANDYN HARVEY (T)		AIR ATTACK SUPERVISOR		MIKE STOUT
5. Resources Assigned this Period						
Strike Team / Task Force / Resource Designator		LWD	Leader	Number Persons	Drop Off PT./Time	Pick Up PT./Time
ENGINE - T3 - A1S - STRIKE TEAM		08/19	MATHEW MAYHALL	21	DP20/0800	DP20/2000
ENGINE - T3 - 5531			D. STEWART		DP20/0800	DP20/2000
WATER TENDER - T2 - 5543					DP20/0800	DP20/2000
FELB			GUY	1	DP20/0800	DP20/2000
ENGINE S/T - T1 - 1075A		08/15	CARL BJERKE;PERCY JONES (T)	22		
6. Control Operations/Work Assignments:						
Provide structure defense adjacent to structures in the Ruth Lake community to prevent fire spread into the community. Utilize appropriate tactics to prevent fire spread. Mop up around structures to prevent reburn as fire passes.						
7. Special Instructions:						
Coordinate additional resource needs with adjoining divisions. Utilize command frequency to communicate with night shift resources. Backhaul excess equipment and trash.						
8. Division/Group Communication Summary						
Function	Channel	RX Frequency N/W	RX Tone/NAC	TX Frequency N/W	TX Tone/NAC	Mode
COMMAND	1	168.1000	0.0	170.4500	123.0	A
TACTICAL	8	168.2500	0.0	168.2500	0.0	A
AIR TO GROUND CMD	14	169.1500	0.0	169.1500	0.0	A
9. Prepared By (Resource Unit Leader)			Approved By (Planning Section Chief)		Date	Time
<i>Jackie Switzer</i>			<i>Israel</i>		08/06/2015	2100



Division/Group Assignment List (ICS 204 WF)

1. Incident Name:			3.			
MAD RIVER COMPLEX			Branch:		Division/Group:	
2. Operational Period: DAY			LASSIC		AA	
Date/Time From: 08/07/2015 0600 FRI		Date/Time To: 08/07/2015 2100 FRI				
4. Operations Personnel						
OPERATIONS CHIEF		CARL SCHWOPE		BRANCH DIRECTOR		
				JOSEPH REYES		
DIVISION/GROUP SUPERVISOR		MARK JAMIESON		AIR ATTACK SUPERVISOR		
				MIKE STOUT		
5. Resources Assigned this Period						
Strike Team / Task Force / Resource Designator		LWD	Leader	Number Persons	Drop Off PT./Time	Pick Up PT./Time
CREW - T2 NORTH PACIFIC FORESTRY INC		08/14	ADRIAN PEREZ	20	DP19/0800	DP19/2000
ENGINE - T3 - A2S - STRIKE TEAM		08/19	PAT OJEDA / RANDY BLACK (T)	19	DP19/0800	DP19/2000
ENGINE - T3 - AZ-A2S E-231		08/18	D. CRAIG / J. ROZNOZAK (T)	3	DP19/0800	DP19/2000
WATER TENDER T2 E-190		08/20	STAN CARGO	1	DP19/0800	DP19/2000
WATER TENDER T2 E-191		08/20	KEITH DARRAH	1	DP19/0800	DP19/2000
SKIDDER T1 E-192		08/20	HANK JOHNSON	2	DP19/0800	DP19/2000
SOF2		08/17	BILL A BRYANT	1	DP19/0800	DP19/2000
SOFR		08/20	ELLIOTT SHAWN DUGGAR	1	DP19/0800	DP19/2000
FEMP		08/20	JOHN BARRIOS	1	DP19/0800	DP19/2000
FEMT		08/19	ERIC KLEWOWICZ	1	DP19/0800	DP19/2000
READ		08/19	JASON MARTIN	1	DP19/0800	DP19/2000
6. Control Operations/Work Assignments:						
Coordinate with READS to all wilderness sensitive plants and ARCH sites. Utilize MIST tactics in wilderness to limit impact. Backhaul excess equipment and trash.						
**ADVISE BRANCH WHEN ENTERING AND LEAVING DIVISION YY. SOFR'S, FEMP, FEMT AND READ ARE SHARED ACROSS ALL LASSIC BRANCH DIVISIONS						
7. Special Instructions:						
Coordinate with READS for all wilderness, sensitive plants and ARCH site issues. Utilize MIST tactics in wilderness to limit impact. Backhaul excess equipment and trash. Utilize command frequency. Night shift contacts with divisions.						
8. Division/Group Communication Summary						
Function	Channel	RX Frequency N/W	RX Tone/NAC	TX Frequency N/W	TX Tone/NAC	Mode
COMMAND	1	168.1000	0.0	170.4500	123.0	A
TACTICAL	5	168.2375	0.0	168.2375	0.0	A
AIR TO GROUND CMD	14	169.1500	0.0	169.1500	0.0	A
9. Prepared By (Resource Unit Leader)			Approved By (Planning Section Chief)		Date	Time
					08/06/2015	2100

Division/Group Assignment List (ICS 204 WF)

1. Incident Name:			3.			
MAD RIVER COMPLEX			Branch:		Division/Group:	
2. Operational Period: DAY			LASSIC		V V	
Date/Time From: 08/07/2015 0600 FRI		Date/Time To: 08/07/2015 2100 FRI				
4. Operations Personnel						
OPERATIONS CHIEF		CARL SCHWOPE		BRANCH DIRECTOR		
				JOSEPH REYES		
DIVISION/GROUP SUPERVISOR		CALEB FINCH		AIR ATTACK SUPERVISOR		
				MIKE STOUT		
5. Resources Assigned this Period						
Strike Team / Task Force / Resource Designator		LWD	Leader	Number Persons	Drop Off PT./Time	Pick Up PT./Time
ENGINE T3 E453			JUSTIN BEDARD	4	DP68/0800	DP68/2000
ENGINE S/T - T6 - MAD RIVER 2 (E-902)		08/20	MICHAEL LOEFFLER	15	DP68/0800	DP68/2000
DOZER - T2 - 001 - INLAND TIMBER COMPANY - D4H TSK		08/17	JAMES DOUGHTERY		DP68/0800	DP68/2000
DOZER - T2 - 002- ABLE SERVICES LLC - AD71		08/17		2	DP68/0800	DP68/2000
TFLD			BRANDEN SULTEMEIER	1	DP68/0800	DP68/2000
SOF2		08/12	BILL A BRYANT	1	DP68/0800	DP68/2000
SOFR		08/20	ELLIOTT SHAWN DUGGAR	1	DP68/0800	DP68/2000
FEMP		08/20	JOHN BARRIOS	1	DP68/0800	DP68/2000
FEMT		08/19	ERIC KLEWOWICZ	1	DP68/0800	DP68/2000
READ			J. KARUZAS	1	DP68/0800	DP68/2000
READ		08/20	J. BEIDL	1	DP68/0800	DP68/2000
6. Control Operations/Work Assignments:						
Coordinate with READS and initiate construction of indirect dozer line from the Division AA/VV break north/northwest remaining outside of wilderness boundary. Prepare for future firing operations to limit fire spread outside of wilderness.						
**ADVISE BRANCH WHEN ENTERING AND LEAVING DIVISION YY. SOFR'S, FEMP, FEMT AND READ ARE SHARED ACROSS ALL LASSIC BRANCH DIVISIONS						
7. Special Instructions:						
Use MIST tactics in wilderness and around sensitive plants and ARCH sites.						
8. Division/Group Communication Summary						
Function	Channel	RX Frequency N/W	RX Tone/NAC	TX Frequency N/W	TX Tone/NAC	Mode
COMMAND	1	168.1000	0.0	170.4500	123.0	A
TACTICAL	5	168.2375	0.0	168.2375	0.0	A
AIR TO GROUND CMD	14	169.1500	0.0	169.1500	0.0	A
9. Prepared By (Resource Unit Leader)			Approved By (Planning Section Chief)		Date	Time
					08/06/2015	2100

Division/Group Assignment List (ICS 204 WF)

1. Incident Name:			3.			
MAD RIVER COMPLEX			Branch:		Division/Group:	
2. Operational Period: DAY			LASSIC		YY	
Date/Time From: 08/07/2015 0600 FRI		Date/Time To: 08/07/2015 2100 FRI				
4. Operations Personnel						
OPERATIONS CHIEF		CARL SCHWOPE		BRANCH DIRECTOR		
				JOSEPH REYES		
DIVISION/GROUP SUPERVISOR			AIR ATTACK SUPERVISOR		MIKE STOUT	
5. Resources Assigned this Period						
Strike Team / Task Force / Resource Designator		LWD	Leader	Number Persons	Drop Off PT./Time	Pick Up PT./Time
FEMO		08/18	ASHLEIGH B D'ANTONIO	1	**/	**/
FOB		08/17	BRIAN ZABEL (T)	1	**/	**/
SOF2		08/17	BILL A BRYANT	1	**/	**/
SOFR		08/20	ELLIOTT SHAWN DUGGAR	1	**/	**/
FEMP		08/20	JOHN BARRIOS	1	**/	**/
FEMT		08/19	ERIC KLEMOWICZ	1	**/	**/
READ		08/19	JASON MARTIN	1	**/	**/
6. Control Operations/Work Assignments:						
<p>**ADVISE BRANCH WHEN ENTERING AND LEAVING DIVISION YY. SOFR'S, FEMP, FEMT AND READ ARE SHARED ACROSS ALL LASSIC BRANCH DIVISIONS</p>						
7. Special Instructions:						
8. Division/Group Communication Summary						
Function	Channel	RX Frequency N/W	RX Tone/NAC	TX Frequency N/W	TX Tone/NAC	Mode
COMMAND	1	168.1000	0.0	170.4500	123.0	A
TACTICAL	5	168.2375	0.0	168.2375	0.0	A
AIR TO GROUND CMD	14	169.1500	0.0	169.1500	0.0	A
9. Prepared By (Resource Unit Leader)			Approved By (Planning Section Chief)		Date	Time
					08/06/2015	2100

SAFETY MESSAGE

“SAFETY is a CORE VALUE to be integrated into ALL incident activities”

MAD RIVER COMPLEX

08/7/2015 DAY 0600-2100

- **Driving on the Incident** – Many of the roads within the complex are higher quality with good running surfaces. This can easily result in excessive speeds. Watch your speed. Other Forest System Roads may be narrow, winding roads with few wide spots for turning around or getting by opposing traffic; there are places with narrow shoulders and no guard rails at the top of drop-offs. Inattention, distracted driving or fatigue could result in an accident. Drive with headlights on. Make sure drivers are well-rested. There are numerous deer on the roads in the morning and evening. In addition, Trinity County is designated as open range and there are many cows on the roads. Increase following distances on dusty roads.
- **Snags and Hazard Trees** - Follow Hazard Tree Safety Guidelines (IRPG p. 22). Limit number of personnel around snags and their exposure time; fallers must be qualified for trees being felled. Be especially alert around snags. Check overhead for dead branches in sleeping areas.
Maintain Situational Awareness!
- **Hazardous Terrain** - Steep terrain is one of the most serious hazards on this incident. Rolling material may be a major issue. Rocks and trees may have been loosened or dislodged by the fire. Evaluate your work area closely before entering. Spread workers out farther than 10 feet apart. Stagger workers so they are not working or walking directly below each other.
- **Bees, snakes and other critters** – There are numerous yellow jackets (and their nests) in the area. Rattlesnakes are common as well. Bears and mountain lions have been seen within the complex. Flag any nests encountered and report bear and mountain lion sightings to your supervisor and/or safety.
- **Thunderstorm Safety** – There may be lightning early in the day. Review page 21 of your IRPG and take appropriate precautions as outlined in the IRPG.

COMMUNICATIONS RESPONSIBILITIES

All firefighters have five communication responsibilities:

- Brief others as needed.
- Debrief your actions.
- Communicate hazards to others.
- Acknowledge messages.
- Ask if you don't know or are unclear.

In addition, all leaders of firefighters have the responsibility to provide complete briefings that include a clearly stated “Leader’s Intent.”

- Task = What is to be done
- Purpose = Why it is to be done
- End State = How it should look when done

TIPS FOR STAYING AWAKE WHILE DRIVING

1. Get the best sleep possible given the circumstances.
2. Learn to recognize and pay attention to the warning signs of fatigue. Take a break if you experience wandering or disconnected thoughts, yawn repeatedly, have difficulty focusing or keeping your eyes open, or find yourself missing traffic signs, tailgating other drivers or falling behind the pace of other traffic.
3. Don't count on tricks like turning up the radio or opening the window for fresh air to keep you awake—these will help for only a short while.
4. If you're planning on driving a long distance, drive during the time of the day when you are normally awake.
5. Take breaks in a safe area every two hours or more frequently if you are feeling any signs of drowsiness.

Safety Officers: Marty Hamel, Charlotte Jordan and Dave Morton

Mad River Complex CA-SRF-1433 - Friday, August 7, 2015 Day Shift

Location	Hazard	Control or Abatement Action
All DIV	Air Operations	<ul style="list-style-type: none"> *Follow "Aviation Watch-Out Situations" in IRPG (2014) pg.44. *Refer to IRPG (2014) pg.57 for directing bucket drops *Don't plan exclusively on air resources for medical transport or resupply, visibility may be impaired *Ensure positive communication with all air resources *Use clear concise statements when directing aircraft *Use clock directions from pilot's perspective
A A, V V, D, F	Heavy Equipment Operations	<ul style="list-style-type: none"> *Ensure communications are established with operators*Use hand signals if other communications are unavailable* Maintain a 50'-100' exclusion area around equipment * Use a spotter when backing *Before moving or transporting equipment identify low hanging wires, ensure there is clearance
ALL DIV	Hazard Trees	<ul style="list-style-type: none"> * Follow "Hazard Tree Safety" guidelines, IRPG (2014) page 22&23 * Post lookouts or spotter in mop-up areas with high concentrations of danger trees * Don't park vehicles or take breaks in areas with high concentrations of hazard trees * Establish "Decision Points" for disengagement during high wind events
ALL DIV	Driving and Traffic	<ul style="list-style-type: none"> * Practice "Defensive Driving" techniques* Use spotters when backing * Honk horn to alert personnel when backing * Always use headlights * Drive at posted or slower speed limits as conditions warrant * Be on the alert for opposing traffic that may be in your lane * Watch out on narrow, winding roads that may have steep drop offs * Use chock blocks, turn wheels into hill * Seat Belts are mandatory * No texting while driving * Watch for wildlife and livestock on all roads * Be prepared for sudden, unexpected stops
DIV A/D	Power Utilities and Gas Lines	<ul style="list-style-type: none"> * Notify all personnel of downed electrical lines * Refer to the IRPG (2014) pg. 24-25 for Power Line Safety * Always treat downed wires as energized * Identify and avoid high-tension transmission lines * Identify and avoid high pressure natural gas lines * Identify and avoid damaged gas service near structures * Be aware of utility restoration in your work area
DIV B,D,F,G,W,S, AA,VV,LL	Potential for Extreme Fire Behavior	<ul style="list-style-type: none"> * Share weather observations with all personnel assigned to division * Establish "Decision Points" to withdraw * Maintain situational awareness * Use "Risk Management" process prior to taking action, refer to IRPG (2014) pg.1 * Review "Severe fire behavior potential" IRPG (2014) pg. 68 * Maintain adequate escape routes and safety zones and continue to re-evaluate throughout the shift * Factor in drought conditions and local ERC prior to operations * Base all actions on past, current and expected behavior of the fire
ALL DIV	Fireline Hazards and Mop Up	<ul style="list-style-type: none"> * Do not work directly above or below personnel during mop-up operations * Watch for falling and rolling debris on steep slopes* Maintain 8'-10' spacing when working & walking * Alert crew personnel of rolling debris by yelling to affected individuals * Position debris that could roll vertically on slope * Watch for weakened trees that may pose danger or fall * Scout areas for mop up prior to work * Wear appropriate PPE * Identify and make known burning stumps or roots that may cave in
ALL DIV	Fatigue, Overexertion, dehydration and heat related illness	<ul style="list-style-type: none"> * Drink fluids throughout operational period (water and Gatorade) not energy drinks * Rotate crews out of smoky areas *Follow work / rest guidelines * Set a reasonable work pace and allow adequate rest breaks * Use buddy system to monitor personnel of heat related and fatigue issues * For Heat Related Injuries refer to IRPG (2014) pg.103
ALL DIV	Marijuana Plantations	<ul style="list-style-type: none"> * Leave area quietly in the same direction that you entered and notify DIVS * Watch for hazardous materials and be aware of possible traps in the grow area * Use extreme caution during encounters * Individuals guarding plantation may be armed * Grower may become confrontational, maintain calm demeanor and leave area
ALL DIV	Communications	<ul style="list-style-type: none"> * Maintain communication with aviation resources and suppression organization * Ensure all know frequency and protocol for contacting resources * Utilize the ICS 205 and 204
AA, VV, W, D, F, S,	Firing Operations & Devices	<ul style="list-style-type: none"> * Only personnel trained in the use of each device will be authorized to use firing equipment * Ensure all personnel are aware of firing operation that may affect them and wear appropriate PPE * Ensure aerial/ground ignition plans have been adequately developed and personnel are briefed
ALL DIV	Environmental Hazards	<ul style="list-style-type: none"> * Be alert for rattlesnakes, watch footing and hand placement around rocks * Check yourself for ticks, watch for bees and other insects that bite or sting * Be alert for bears, cougars and other wildlife * Poisonous plants - identify plants and avoid; change and wash clothing and shower frequently
ALL DIV	Thunderstorms	<ul style="list-style-type: none"> ~ Review and follow Thunderstorm Safety guidelines in IRPG page 21 (2014) ~ Observe 30/30 Rule for lightning safety, IRPG page 19 (2014) ~ Establish "Decision Points" to withdraw, and ensure all know rally site ~ Use "Risk Management" process to determine retreat criteria and actions
Lassic Branch	Naturally Occurring Asbestos	<ul style="list-style-type: none"> ~ Avoid disturbing areas of Serpentine rock formations ~ Avoid dusty conditions to reduce exposure ~ Limit dust generating activities ~ Avoid or minimize tracking dust into vehicles

INCIDENT RADIO COMMUNICATIONS PLAN		Incident Name			Date/Time Prepared			Operational Period Date/Time		
		Mad River Complex SRF-001433			8/6/15, 2000 hrs			8/7/15, 0600-2100		
Zn / Ch	Function	Channel Name/Trunked Talkgroup	Assignment	RX Freq	RX Tone/NAC	TX Freq	TX Tone/NAC	Mode A, D, M	Remarks	
1	Command	CMD 1	All Divisions	168.1000	123.0	170.4500	123.0	A		
2	Command	CMD 2	Not Deploy	172.7000	123.0	163.7625	123.0	A	Will be deployed 8/8	
3	Command		Future use							
4	Tactical	TAC 4	Div. A	166.5500	123.0	166.5500	123.0	A		
5	Tactical	TAC 5	Div.AA/LL/VV/YY	168.6000	123.0	168.6000	123.0	A		
6	Tactical	TAC 6	Div. B/D/S	166.7250	123.0	166.7250	123.0	A		
7	Tactical	TAC 7	Div.W	166.7750	123.0	166.7750	123.0	A		
8	Tactical	TAC 8	Ruth/Forest Glen SPG	168.2500	123.0	168.2500	123.0	A		
9	Tactical	TAC 9	Div. G	159.4725	123.0	159.4725	123.0	A		
10	Tactical	TAC 10	Div. F	154.2875	123.0	154.2875	123.0	A		
11	Tactical	TAC 11	unassigned	154.3025	123.0	154.3025	123.0	A		
12	Dispatch	SRF-2 FN	IA & Emergency Backup	168.7250	0.0	170.1250	103.5	A	Tone 8: Local Dispatch - IA and emergency backup	
13	Tactical	CALCORD	Medical	156.0750	156.7	156.0750	156.7	A	Life Flight, etc.	
14	Air - Ground CMD	A/G CMD	All Divisions	169.1500	0.0	169.1500	0.0	A		
15	Air - Ground TAC	A/G TAC	All Divisions	166.6750	0.0	166.6750	0.0	A		
16	Emergency only	GUARD	All Divisions	168.6250	0.0	168.6250	110.9	A		
17										
18										
19										
20	Emergency only	GUARD	All Divisions	168.6250	0.0	168.6250	110.9	A	AIR GUARD - emerg. use only -Tone 1	

Prepared By (Communications Unit Leader)  Incident Location

Greg Ely, COML County Trinity Latitude, Longitude N 40 12.334, W 123 17.844

Deviation is assumed to be narrow band unless otherwise noted in the remarks. Mode refers to either "A" (analog), "D" (digital) or "M" (mixed mode). 1/14/14 v.5

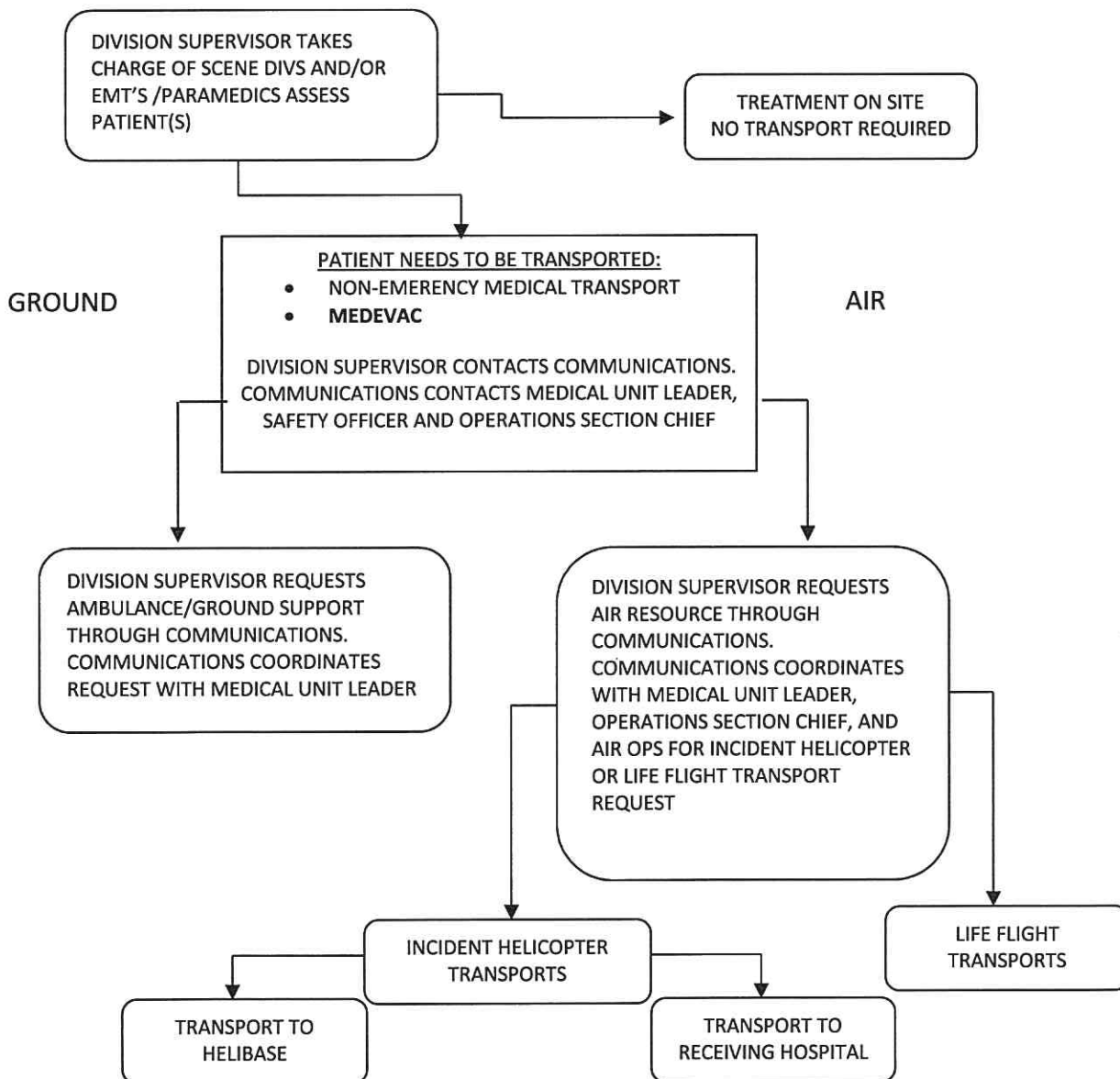
1. Incident/Project Name		2. Operational Period			
Mad River Complex		Date/Time 08/07/2015 - 0600-2100			
2. Aid Station					
Name	Complete Address	Phone & EMS Frequency	Advanced Life Support (ALS) Yes No		
Frontline Medical	Mad River ICP Flying AA Ranch Ruth Lake, CA	530-927-8133	XX		
3. Ambulance Services					
Name	Complete Address	Phone & EMS Frequency	Advanced Life Support (ALS) Yes No		
Trinity County Life Support Medic 305	Mad River ICP	530-623-2500	XX		
Southern Area Trinity Rescue	153 A Van Duzen Rd. Mad River, CA	707-574-6421			XX
4. Air Ambulance Services					
Name	Phone	Type of Aircraft & Capability			
CAL FIRE H102 Day Hoist	707-726-1268	B205A++ Hoist			
CHP H14/H16 Day Hoist	530-242-3210	A Star B3 Hoist			
CA ANG Guard 825 North Ops Hoist/Extraction Helo	530-243-1434	H60 (Blackhawk) NVG/Hoist			
PHI Med 43/REACH	800-597-9571	EC 135 IFR/NVG B407 NVG			
5. Hospitals					
Name Complete Address	GPS Datum – NAD 83 Coordinate Standard Degrees Decimal Minutes DD° MM.MMM' N - Lat DD° MM.MMM' W - Long	Travel Time Air Gnd	Phone	Helipad Yes No	Level of Care Facility
St Joseph Hospital 2700 Dolbeer St Eureka, CA 95501	Lat: N 40 47.02	20 Min 2.5 HRS	707-269-4250 707-442-8646	X	Level II Trauma Center
	Long: W 124 23.67				
	VHF:				
Shasta Regional Medical Center 110 Butte St. Redding, CA 9600	Lat: N 40 35.18	30 Min 3 HRS	530-244-5353 530-243-4042	X <input type="checkbox"/>	
	Long: W122 23.13				
	VHF:				
Redwood Memorial Hospital 3300 Renner Dr. Fortuna, CA 95540	Lat:	2.5 HRS	707-725-3361	<input type="checkbox"/> X	
	Long:				
	VHF:				
Mercy Medical Center 2175 Rosaline Redding, CA 96001	Lat: N 40 34.29	30 Min 3 HRS	530-225-7201 530-242-4401	X <input type="checkbox"/>	Level II Trauma Center
	Long: W 122 23.67				
	VHF:				
UC Davis Medical Center 2315 Stockton Blvd Sacramento, CA 95817	Lat: N 38 33.17	1.5 HRS 5 HRS	916-734-3790 916-734-5669	<input type="checkbox"/> X	Level I Trauma Center Burn Center
	Long: W 121 27.05				
	VHF:				
6. Prepared By (Medical Unit Leader)					
7. Date/Time		8. Reviewed By (Safety Officer)		9. Date/Time	
Robert Russell MEDL		Marty Hamel SOF1		08/06/2015 2000	
		for: Charlotte Jorde SOF1(+)			

Initiate care with available resources at scene and notify DIVS when an injury occurs.

The DIVS, or designee, shall coordinate the incident and direct necessary actions. Take the following actions:

1. Determine the nature of the emergency.
2. If the emergency is a medical injury/illness, determine if the injury/illness is life threatening.
3. If the injury is life threatening, then clear designated frequency for emergency traffic.
4. Identify the on-scene point of contact by position.
5. Contact the Medical Unit Leader immediately.
6. Identify number injured, patient assessment(s) and location (geographic and/or GPS coordinates).
7. Identify on-scene medical personnel by position and last name (i.e. EMT Jones).
8. Identify preferred method of patient transport.
9. Determine any additional resources or equipment needed.

Continually evaluate the Evacuation Plan, develop contingencies in the event the first plan is not effective.



Medical Incident Report

FOR ALL MEDICAL EMERGENCIES: IDENTIFY ON SCENE INCIDENT COMMANDER BY NAME AND POSITION AND ANNOUNCE "MEDICAL EMERGENCY" TO INITIATE RESPONSE FROM IMT COMMUNICATIONS/DISPATCH.

Use items one through nine to communicate situation to communications/dispatch.

1. CONTACT COMMUNICATIONS/DISPATCH

Ex: "Communications, Div. Alpha. Stand-by for Priority Medical Incident Report." (If life threatening request designated frequency be cleared for emergency traffic.)

2. INCIDENT STATUS: Provide incident summary and command structure.

Nature of Injury/Illness		<i>Describe the injury (Ex: Broken leg with bleeding)</i>
Incident Name		<i>Geographic Name + "Medical" (Ex: Trout Meadow Medical)</i>
Incident Commander		<i>Name of IC</i>
Patient Care		<i>Name of Care Provider (Ex: EMT Smith)</i>

3. INITIAL PATIENT ASSESSMENT: Complete this section for each patient. This is only a brief, initial assessment. Provide additional patient info after completing this 9 Line Report.

Number of Patients:	Male / Female	Age:	Weight:
Conscious? <input type="checkbox"/> YES <input type="checkbox"/> NO = MEDEVAC!			
Breathing? <input type="checkbox"/> YES <input type="checkbox"/> NO = MEDEVAC!			
Mechanism of Injury: <i>What caused the injury?</i>			
Lat/Long (Datum WGS84) <i>Ex: N 40° 42.45' x W 123° 03.24'</i>			

4. SEVERITY OF EMERGENCY, TRANSPORT PRIORITY

SEVERITY	TRANSPORT PRIORITY
<input type="checkbox"/> URGENT-RED Life threatening injury or illness. <i>Ex: Unconscious, difficulty breathing, bleeding severely, 2° – 3° burns more than 4 palm sizes, heat stroke, disoriented.</i>	Ambulance or MEDEVAC helicopter. Evacuation need is IMMEDIATE.
<input type="checkbox"/> PRIORITY-YELLOW Serious Injury or illness. <i>Ex: Significant trauma, not able to walk, 2° – 3° burns not more than 1-2 palm sizes.</i>	Ambulance or consider air transport if at remote location. Evacuation may be DELAYED.
<input type="checkbox"/> ROUTINE-GREEN Not a life threatening injury or illness. <i>Ex: Sprains, strains, minor heat-related illness.</i>	Non-Emergency. Evacuation considered Routine of Convenience.

5. TRANSPORT PLAN:

Air Transport: (Agency Aircraft Preferred)

<input type="checkbox"/> Helispot	<input type="checkbox"/> Short-haul/Hoist	<input type="checkbox"/> Life Flight	<input type="checkbox"/> Other
-----------------------------------	---	--------------------------------------	--------------------------------

Ground Transport: Click here to enter text.

<input type="checkbox"/> Self-Extract	<input type="checkbox"/> Carry-Out	<input type="checkbox"/> Ambulance	<input type="checkbox"/> Other
---------------------------------------	------------------------------------	------------------------------------	--------------------------------

6. ADDITIONAL RESOURCE/EQUIPMENT NEEDS:

<input type="checkbox"/> Paramedic/EMT(s)	<input type="checkbox"/> Crew(s)	<input type="checkbox"/> SKED/Backboard/C-Collar
<input type="checkbox"/> Burn Sheet(s)	<input type="checkbox"/> Oxygen	<input type="checkbox"/> Trauma Bag
<input type="checkbox"/> Medication(s)	<input type="checkbox"/> IV/Fluid(s)	<input type="checkbox"/> Cardiac Monitor/AED
<input type="checkbox"/> Other (i.e. splints, rope rescue, wheeled litter)		

7. COMMUNICATIONS:

Function	Channel Name/Number	Receive (Rx)	Tone/NAC *	Transmit (Tx)	Tone/NAC *
<i>Ex: Command</i>	<i>Forest Rpt, Ch. 2</i>	<i>168.3250</i>	<i>110.9</i>	<i>171.4325</i>	<i>110.9</i>
COMMAND					
AIR-TO-GRND					
TACTICAL					

*(NAC for digital radio system)

8. EVACUATION LOCATION:

Lat/Long (Datum WGS84) <i>EX: N 40 42.45' x W 123 03.24'</i>	
Patient's ETA to Evacuation Location:	
Helispot/Extraction Size and Hazards:	

9. CONTINGENCY:

<i>Considerations: If primary options fail, what actions can be implemented in conjunction with primary evacuation method? Be thinking ahead...</i>	<p>REMEMBER: Confirm ETA's of resources ordered Act according to your level of training Be Alert. Keep Calm. Think Clearly. Act Decisively.</p>
---	--

COME TO FINANCE

8/6/2015

C-1 Ft. Apache

C-20 Natives

C-25 Iron Mountain

C-3 North Pacific Forestry

C-6 (c-57) Mad River INC

E- 153 Johnson, Matt

E-114 Bob Johnson Const

E-142 E3

E-4 Tonto

E-68 Frontline Medical

E-69 Trinity County Life Support

E-73.4 Goodyear Fire

E-73.6 Chad, Stluka

E-74.6 Snowflake Fire

E-75.4 Ric Rico

Engine 453-NV-HTF

O- 159 Dillon, Jaylin

O- 65.66 Smith, Ron

O-143 Forserg, Gary

O-144 Sheldon, Michael

O-164 Stevens, Philip

O-17 Lang, Andrew

O-18 Nolan, Eric

O-223 Ron Sass

O-33 Mourtsen, Pete

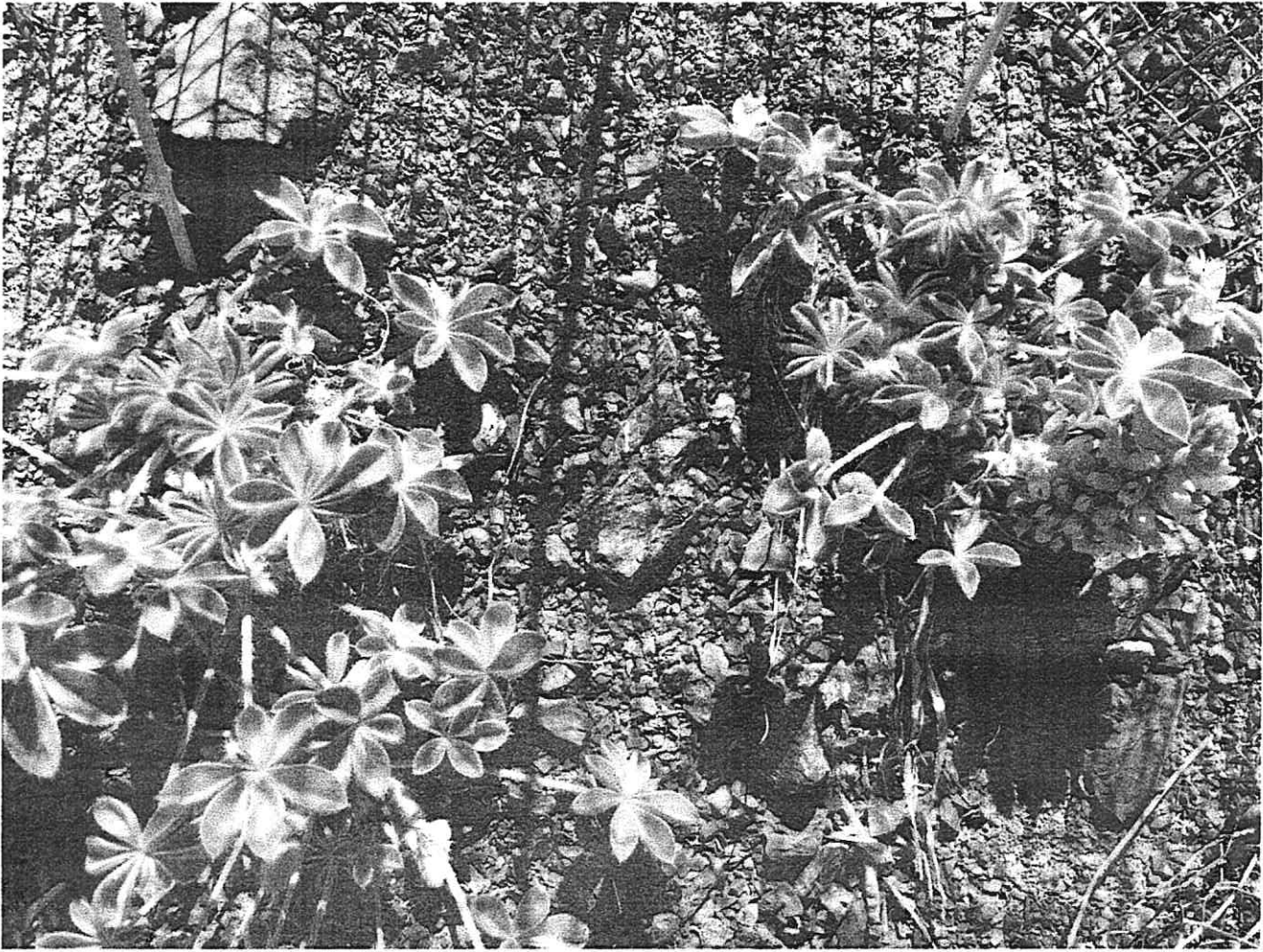
O-34 Bryant, Bill

O-47 Pridham, Art

O-61 Engleson, Ezra

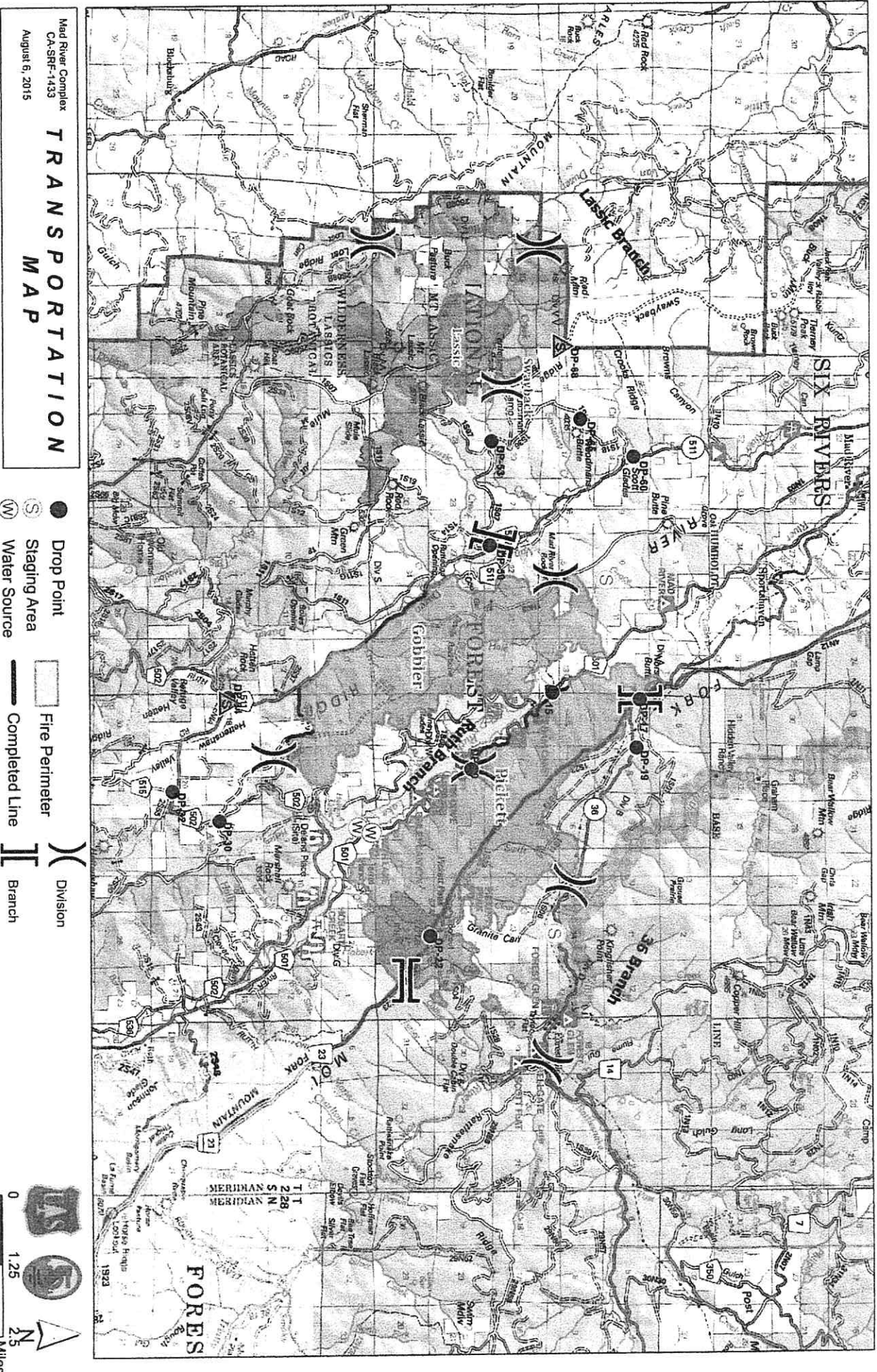
O-65.33 Judy, Nathan

O-65.51 Butler, Violet



LASSICS LUPINE





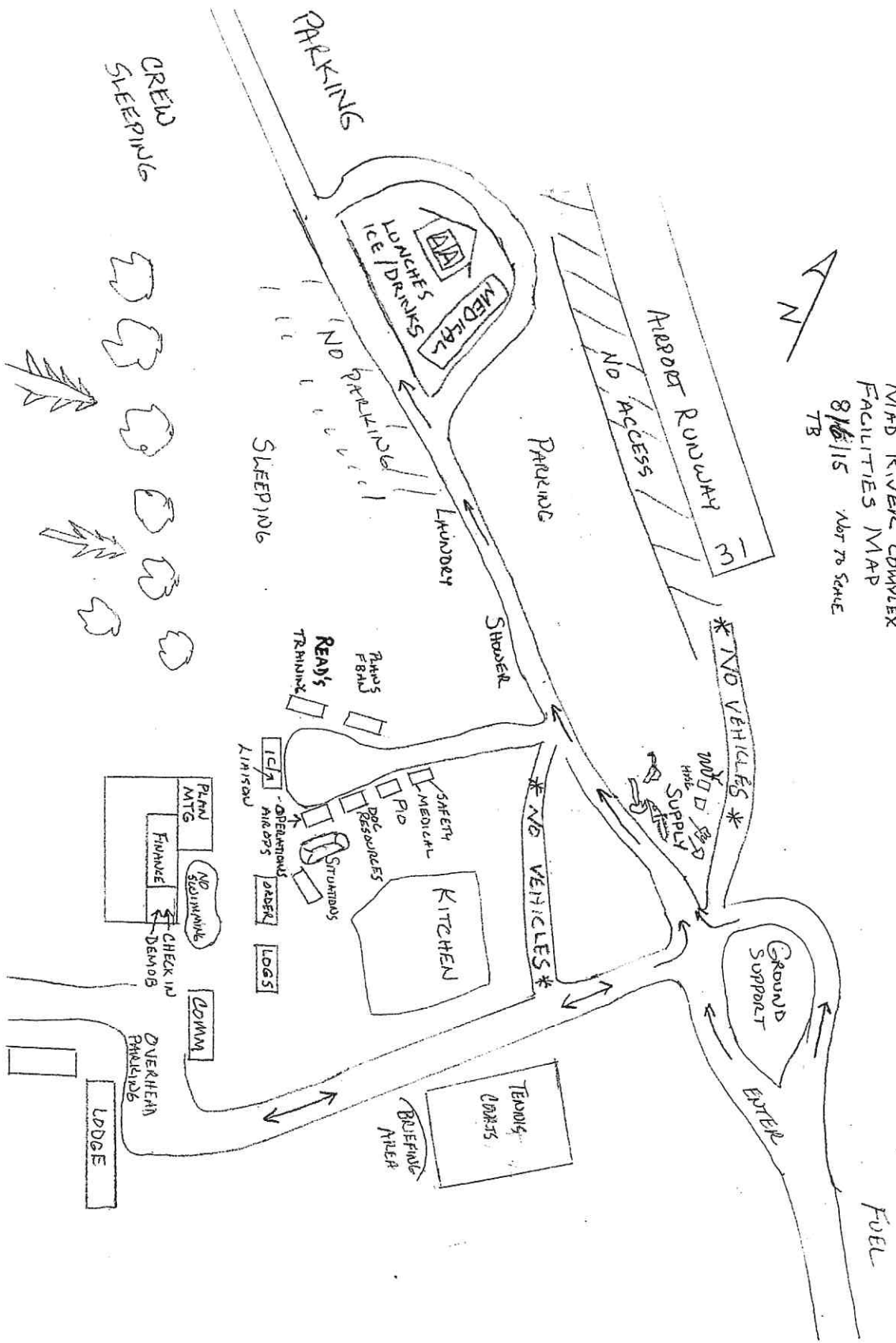
Mad River Complex
 CA-SRF-1433
 August 6, 2015

TRANSPORTATION MAP

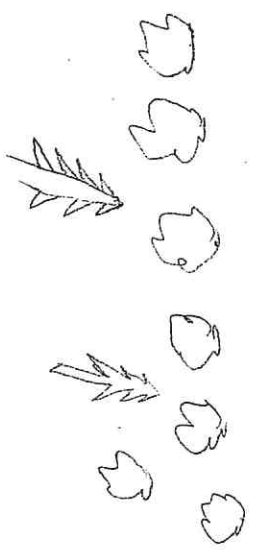
- Drop Point
- Staging Area
- ⊙ Water Source
- ▭ Fire Perimeter
- Completed Line
-) Division
- || Branch



MAD RIVER COMPLEX
 FACILITIES MAP
 8/15/15
 Not to Scale
 TB



CREW
SLEEPING



PLAN
MTC
FINNIZE
CHECK IN
DEMOS

OVERHEAN
PARKING
LODGE

IC/A
- OPERATIONS
ALBERS
LOGS

READY
TRAINING

TECHNICAL
COURTS
BUYSIDE
AREA

SAFETY
MEDICAL
PFD
PPE
RESOURCES
SITUATIONS

KITCHEN

NO VEHICLES

SHOWER

PARKING

NO ACCESS

AIRBOAT
RUNWAY

NO VEHICLES

WOOD
SHED
SUPPLY

GROUND
SUPPORT

MAD
RIVER

FUEL

