

MAD RIVER COMPLEX

CA-SRF-001433

P5J0JC (0510)



August 10-11, 2015

NIGHT Operational Period

1800 - 0900

INCIDENT OBJECTIVES	1. Incident Name Mad River Complex	2. Date 8/10/15	3. Time 1300
4. Operational Period NIGHT 08/10-11/15 1800 - 0900			
5. General Control Objectives for the Incident (include alternatives) Strategic Framework Provide for aggressive fire suppression utilizing direct and indirect tactics and providing point protection to threatened structures within the fire area. The threat to life, property and values at risk remains high. Tactics which reflect limited firefighting resources on hand and utilizing existing control features in areas with a high probability of success should be applied. Potential for continued fire spread is high due to fuels, weather and time of season. Leaders Intent Provide the highest level of customer services to all involved with or impacted by the Mad River Complex. All incident assigned personnel should be prepared to take the appropriate actions regarding: <ul style="list-style-type: none"> • Personal interactions internal and external to the incident management organization • Personal safety and the safety of others • Response to any incident-within-an-incident Objectives <ul style="list-style-type: none"> • Provide for Firefighter and Public safety through hazard recognition and application of the risk management process. • Reduce the threat to private property, residences and infrastructure through the application of direct suppression tactics. • Protect natural resources through utilization of control features that offer a high probability of success. • Engage in fire suppression operations that are cost effective, but commensurate with values at risk. • Protect wilderness values and botanical resources by ensuring Minimum Impact Suppression Tactics (MIST) are applied. 			
6. Weather Forecast for Period WEATHER FORECAST FOR MONDAY NIGHT: *****GUSTY SOUTHERLY FLOW TONIGHT***** <ul style="list-style-type: none"> • WEATHER: Partly cloudy and breezy ridge tops. Smoke settling into the canyons overnight. • TEMPERATURES: Min Valley bottom...47-53-F; Ridges...50-57 • HUMIDITY: Max Valley bottom...85-95%; Ridges...55-70%.(Early then dry to sunrise). • 20-FOOT WIND: <ul style="list-style-type: none"> ○ SLOPE/VALLEY - Upslope 4-7 with gusts to 9 mph in the evening.....becoming downcanyon/downslope to less than 4 mph after 2200. ○ RIDGETOP - Southwest 10 to 15 mph with gusts to 20 mph in the evening...becoming southerly 10 mph gusts to 15 mph overnight. • INVERSIONS/STABILITY: Rather mixed. Some smoke settling below 3000 feet 			
7. General Safety Message <ul style="list-style-type: none"> • POTENTIAL FOR ACTIVE FIRE BEHAVIOR WITH ALLIGNMENT OF WIND/SLOPE • DRIVING ON COUNTY AND INCIDENT ROADS • HAZARDOUS TREES 			
8. Attachments (mark if attached)			
<input checked="" type="checkbox"/> Organization List - ICS 203 <input checked="" type="checkbox"/> Div. Assignment Lists - ICS 204 <input checked="" type="checkbox"/> Communications Plan - ICS 205 <input checked="" type="checkbox"/> READ Message	<input checked="" type="checkbox"/> Medical Plan - ICS 206 <input checked="" type="checkbox"/> Incident Map <input checked="" type="checkbox"/> Fire Weather Forecast <input checked="" type="checkbox"/> ICS 214	<input checked="" type="checkbox"/> Safety Message <input checked="" type="checkbox"/> Air Ops Summary ICS 220 <input checked="" type="checkbox"/> Base Camp Map <input checked="" type="checkbox"/> Fire Behavior	
9. Prepared by (Planning Section Chief) Dennis Cooper/Tim Baal/ Rick Leuck (T)	10. Approved by (Incident Commander) Mike Minton/ Bea Day (T)		

ORGANIZATION ASSIGNMENT LIST (ICS-203)

1. Incident Name: MAD RIVER COMPLEX		2. Operational Period: NIGHT		Date From: 8/10/2015 Time From: 1800		Date To: 8/11/2015 Time To: 0900	
3. Incident Commander(s) and Command Staff:				7. Operations Section:			
Incident Commander	MIKE MINTON/ BEA DAY (T)		Chief				
Deputy IC	CARLTON JOSEPH		Planning Ops		DON SMITH/ DONOVAN LEE (T)		
Safety Officer	HAMEL / MORTON / JORDAN (T) / VITWAR (T)						
Public Information Officer	STEVE KLIEST / MARK SAVAGE		Branch Director		COREY ROSE		
Liaison Officer	RICK ALPERT		Division/Group		36	JORDAN McKNIGHT	
			Division/Group		RUTH	ALAN HUSKINS	
			Division/Group		LASSIC	JAYSON SMITH TROY MAGUIRE (T)	
			Division/Group				
			Division/Group				
4. Agency/Organization Representatives:				Branch			
SIX RIVERS NF	DAN DILL		Branch Director				
CHP	TAMI McCANLESS		Division/Group				
SOUTH TRINITY VFD	DON STEWART / BILL GERMAN		Division/Group				
TRINITY SO	JAKE HESS		Division/Group				
OES	GARY HUMPHREY		Branch				
5. Planning Section:				Division/Group			
Chief	TIM BAAL / RICK LEUCK (T)		Division/Group				
Deputy	DENNIS COOPER		Division/Group				
Resources Unit	ASHBY / MATYE / THOMPSON GRISEDAL (T)		Division/Group				
Situation Unit	MIKE Mc HARGUE / TAD MORLOCK		Division/Group				
Demobilization Unit	JIM COOLEY		Division/Group				
Documentation Unit	PHIL SETTLES		Division/Group				
Fire Behavior Analyst	STEVE PAES		Contingency				
GISS	EVAN CONKLIN / JASON DUKE (T) MELISSA VARGAS (T)		Division/Group				
Training Specialist	ALLISON JACKSON		Division/Group				
IMET	MATT MEHLE/ AMANDA GRANING		Division/Group				
READ	SCOTT HAGERTY / RAYMA COOLEY		Division/Group				
6. Logistics Section:				Division/Group			
Chief	TONY MARTINEZ/ JIM ECKROTH (T) TERESA STELMAN (T)						
Deputy			Air Operations Branch				
Support Branch			Air Ops Branch Dir.		JOHN KEESEE		
Supply Unit	MIKE BRADFORD		Air Support Grp Supervisor		CRAIG DADO		
Ordering Unit	MARIE BUTLER		Air tactical Group Supervisor		MIKE STOUT		
Facilities Unit	WALLY GROGAN		8. Finance/Administration Section:				
Ground Support Unit	JOHN BADARACCO / FRED SIMONDS		Chief		THERESA FORK		
Service Branch			Deputy				
Communications Unit	GREG ELY		Time Unit		JANICE BROWN		
Medical Unit	ROBERT RUSSELL		Procurement Unit		CHRISTOPHER FORD		
Food Unit	EDWIN MAYBERRY / DALE THOMPSON / WHITNEY VONADA(T)		Comp/Claims Unit		ANNMARIE CARLSON / PAMELA BEAUJON (T)		
			Cost Unit		ROGER SIEMERS; LEE PIPER (T)		
9. Date/Time Prepared: 8/10/15 1300		Prepared By: GARY THOMPSON, RESL			Signature: <i>Gary Thompson</i>		

Fire Weather Forecast

FORECAST NO: 13
PREDICTION FOR: NIGHT SHIFT
SHIFT DATE: Aug 10-11, 2015
TIME AND DATE
FORECAST ISSUED: Aug 10, 2015 1800 PDT

NAME OF FIRE: Mad River Complex
UNIT: Six Rivers NF
SIGNED: Matt Mehle *Matt Mehle*
Incident Meteorologist

*****Fire Weather Watch valid Tuesday morning through Tuesday evening*****

WEATHER DISCUSSION: A deepening upper low off the coast will bring gusty southerly winds to the Mad River Complex. The strongest winds will be above 3500 feet through the early evening hours. Winds will diminish slightly overnight, but remain breezy. Lower elevations will be more sheltered and terrain driven. Moderate to excellent recoveries will once again prevail tonight.

WEATHER FORECAST FOR MONDAY NIGHT: *****GUSTY SOUTHERLY FLOW TONIGHT*****
WEATHER: Partly cloudy and breezy ridge tops. Smoke settling into the canyons overnight.

TEMPERATURES: Min Valley bottom...47-53-F; Ridges...50-57
HUMIDITY: Max Valley bottom...85-95%; Ridges...55-70%.(Early then dry to sunrise).

20-FOOT WIND:
SLOPE/VALLEY - Upslope 4-7 with gusts to 9 mph in the evening...becoming downcanyon/downslope to less than 4 mph after 2200.
RIDGETOP - Southwest 10 to 15 mph with gusts to 20 mph in the evening...becoming southerly 10 mph gusts to 15 mph overnight.
INVERSIONS/STABILITY: Rather mixed. Some smoke settling below 3000 feet

OUTLOOK FOR TUESDAY: *****Fire Weather Watch in Effect*****
Partly cloudy with areas of smoke. Max Temps...78-87. Min RH...17-30%. Ridgertop wind: Southerly 4 to 8 mph becoming south-southeast 7 to 12 mph with gusts to 20 mph...up to 25 mph above 3500 feet. Slope/Valley wind: drainage flow 3 to 5 mph in the morning becoming Upcanyon / Upslope 4 to 7 mph with gusts to 12 mph . Strongest in S-N aligned drainages.

WEATHER FORECAST FOR TUESDAY NIGHT:
WEATHER: Mostly clear and breezy. Smoke settling into the canyons overnight.

TEMPERATURES: Min Valley bottom...47-53-F; Ridges...50-57
HUMIDITY: Max Valley bottom...85-95%; Ridges...55-70%.

20-FOOT WIND:
SLOPE/VALLEY - Upslope 4-7 with gusts to 9 mph in the evening...becoming downcanyon/downslope to less than 4 mph after 2200.
RIDGETOP - Southwest 5 to 10 mph with gusts to 18 mph in the evening and early part of night...becoming southerly 4 to 8 gusts to 15 mph overnight.
INVERSIONS/STABILITY: Becoming more stable overnight with smoke settling late.

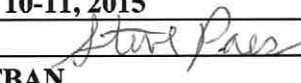
SUNSET: 8:19 PM SUNRISE: 6:20 AM

REALTIME RAWS INFO for MAD RIVER COMPLEX

Location-----	Name
Div A -	MAD RIVER
36 Branch (higher elev) -	FRIEND MTN
Div G -	RUTH
Div D/F -	IRAWS 27 (FOREST GLEN)
Lassic Branch	IRAWS 33 (SWAYBACK)



FIRE BEHAVIOR FORECAST

FORECAST NUMBER: 18	TYPE OF FIRE: Wildland Fire
FIRE NAME: Mad River Complex	OPERATIONAL PERIOD: Night
DATE / TIME ISSUED: Aug 10, 2015 1200	DATE: Aug 10-11, 2015
UNIT: Six Rivers NF / Mad River	SIGNED:  Steve Paes FBAN

INPUTS

WEATHER SUMMARY:

Mostly clear with smoke settling into valleys overnight.

Temperatures: 47-57

Max. Relative Humidity: 85-95% valleys; 55-70% ridgetops.

Wind: Slope/Valley- Upslope 4-7 mph with gusts to 9 mph becoming downcanyon/downslope 4 mph after 2200.

Ridgetop Winds- Southwest 10-15 mph gusts to 25 mph early in the shift becoming southerly 10-15mph gusts to 25mph.

GENERAL:

-The fire is burning primarily timber Fuels with some brush and grass intermix. The primary carrier of surface fire is heavy forest litter with a shrub or small tree understory.

- Fire spread will be primarily topography driven. Expect the predominant fire spread to be backing downhill. Roll out on steep slopes can contribute to rates of spread. Expect up to 10-20 chains of downhill progression during the shift.

-Head fire or torching on steep slopes can transition to crown fire, especially on slopes that align with general winds.

Rates of spread: Timber-head fire = 3-12ch/hr (depending on slope) dropping to 3-8 overnight, backing fire= 1-3 ch/hr.

Grass- head fire 30 ch/hr dropping to 3 overnight, backing fire 2ch/hr.

Flame lengths: Timber-head fire= 8ft. dropping to 4-6ft. overnight, backing fire= 2ft.

Grass- head fire 5ft. dropping to 1ft. overnight, backing fire 1ft.

Probability of Ignition (PIG) = 50% shaded fuel, 90% exposed fuel, dropping to 10% during the shift.

Short range spotting occurs with light winds and moderate fire activity. Spotting distances of up to ½ mile can occur with crown fire.

Dead fuel moisture contents: 1hr= 3% rising to 13% during the shift, 10hr = 5% , 100hr and 1000hr =10%

Live Fuel Moisture: Timber 150%, Shrubs 80%.

SPECIFIC:

All Divisions:

-Expect active burning during the early portion of the shift. Activity will diminish as humidity rises. Fine fuels will stop carrying fire in lower elevations but will continue to burn all night on ridges. Down and dead fuels will continue to burn during the shift. Any wind creates the opportunity for increased fire activity with short range spotting, torching, and short crown runs on steep slopes.

-Anticipate complete fuel consumption of larger fuels due to low fuel moistures. Stumps and roots have the potential to burn out and create stump holes that will be a hazard at night.

-Firing operations in lower elevations will become ineffective 0100-0200 due to humidity recovery.

36 GROUP: The Hwy. 36 corridor has the most exposure to downvalley winds due to higher elevations to the east draining down the Trinity Rv.

RUTH GROUP: Control lines are sheltered from general and down valley winds. Expect downslope winds during the night.

LASSIC GROUP: Lassic Fire will be exposed to ridgetop winds. Moderate humidity recovery and gusty winds will allow fire progression during the entire shift.

AIR OPERATIONS


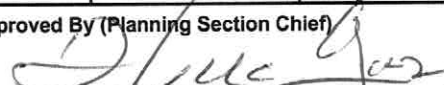
Today's winds could create areas of wind shear across the fire area.

Sunset: 2017

SAFETY

Short intense fire runs are possible. Make sure you know where your safety zone is at, and the time it takes to get there.

Division/Group Assignment List (ICS 204 WF)

1. Incident Name:				3.		
MAD_RIVER_COMPLEX				Branch:	Division/Group: 36 GROUP	
2. Operational Period: NIGHT						
Date/Time From: 08/10/2015 1800 MON		Date/Time To: 08/11/2015 0900 TUE				
4. Operations Personnel						
OPERATIONS CHIEF				BRANCH DIRECTOR		COREY ROSE
DIVISION/GROUP SUPERVISOR		JORDAN MCKNIGHT		AIR ATTACK SUPERVISOR		MIKE STOUT
5. Resources Assigned this Period						
Strike Team / Task Force / Resource Designator		LWD	Leader	Number Persons	Drop Off PT./Time	Pick Up PT./Time
ES1 S/T - T1 - 4805A E-257		08/14	ERIC DEHART	19	DP15/1900	DP15/0800
ES1 - S/T - T1 - CA-XSC - 2311A - E-53		08/15	RICHARD ALAMEDA	22	DP15/1900	DP15/0800
ENG6 PACIFIC HABITAT & FIRE - 66 E-330		08/14	GARY ROBINSON		DP15/1900	DP15/0800
DOZ2 T2 - BUCK TRUCKING 24HR E-212		08/20	DON ANDREWS	2	DP15/1900	DP15/0800
ENG4 CENTRAL WILDFIRE - 742 E-331		08/14	JOHN THORESON		DP15/1900	DP15/0800
HEQB KENNETH JAMES BURNS O-246		08/22		1	DP15/1900	DP15/0800
FEMP CHRIS C WRISLEY O-105		08/17		1	DP15/1900	DP15/0800
SOFR THOMAS FRANCIS DONOHOE O-32		08/18		1	DP15/1900	DP15/0800
6. Control Operations/Work Assignments:						
Mop up along Hwy 36 as appropriate from DP17 to the Division B/D break to limit fire spread potential north of Hwy. 36. Monitor and hold fire within Section 16 to limit westward fire spread. Patrol Mad River Road to the Division G break, monitor fire status in the Forest Glen, Division F area. Provide structure defense in Forest Glen.						
7. Special Instructions:						
<ul style="list-style-type: none"> a. Use caution around snags and flag as needed for safety. b. Identify snags to be fallen with appropriate tape. c. Use caution while driving on all roads due to narrowing and other roadway hazards. d. Use caution while driving on Highway 36. e. **DO NOT OPEN RECREATIONAL GATES ON FOREST** f. Coordinate with PG&E for utility concerns. g. Backhaul excess equipment and trash. h. Verify status of all accountable property. GPS location when moved or placed and report coordinates to supply. i. Utilize spill kits under Mark III pumps. 						
8. Division/Group Communication Summary						
Function	Channel	RX Frequency N/W	RX Tone/NAC	TX Frequency N/W	TX Tone/NAC	Mode
COMMAND	1	168.1000	123.0	170.4500	123.0	A
TACTICAL	4	166.5500	123.0	166.5500	123.0	A
AIR TO GROUND CMD	14	169.1500	0.0	169.1500	0.0	A
9. Prepared By (Resource Unit Leader)		Approved By (Planning Section Chief)		Date	Time	
				08/10/2015	1000	

Division/Group Assignment List (ICS 204 WF)

1. Incident Name:				3.			
MAD_RIVER_COMPLEX				Branch:		Division/Group:	
2. Operational Period: NIGHT				RUTH GROUP			
Date/Time From: 08/10/2015 1800 MON		Date/Time To: 08/11/2015 0900 TUE					
4. Operations Personnel							
OPERATIONS CHIEF			BRANCH DIRECTOR COREY ROSE				
DIVISION/GROUP SUPERVISOR ALAN LEE HUSKINS			AIR ATTACK SUPERVISOR				
5. Resources Assigned this Period							
Strike Team / Task Force / Resource Designator		LWD	Leader		Number Persons	Drop Off PT./Time	Pick Up PT./Time
HC2 CREW - T2 - OC 25 C-44		08/10	JEREMY VANCE		19	DP36/1900	DP36/0700
ENG3 BLACKTIMBER 11 E-143		08/19	TED HEBRARD		1	DP36/1900	DP36/0700
ES3 ENGINE S/T - T3 - MAD RIVER 1 E-901		08/19	JIM OBERRITER		21	DP36/1900	DP36/0700
ENG6 NORTH LOGAN - BRUSH 120 E-8		08/14	JON KELLER		3	DP36/1900	DP36/0700
ENG6 LOGAN - E-9		08/14	JASON GIBBONS		3	DP36/1900	DP36/0700
SOFR DAVID RANDOLPH O-257		08/11			1	DP36/1900	DP36/0700
SOFR SCOTT A BELKNAP O-116		08/19			1	DP36/1900	DP36/0700
6. Control Operations/Work Assignments:							
Patrol and mopup along the Van Duzen Road and the Westside Road to limit fire spread. Complete firing operations if weather and fire behavior permits.							
7. Special Instructions:							
<ul style="list-style-type: none"> a. Use caution around snags and flag as needed for safety. b. Identify snags to be fallen with appropriate tape. c. Use caution while driving on all roads due to narrowing and other roadway hazards d. **DO NOT OPEN RECREATIONAL GATES ON FOREST* e. Be aware of wildlife in the fire area and use caution when encountered. f. Backhaul excess equipment and trash. g. Verify status of all accountable property. GPS location when moved or placed and report coordinates to supply. h. Utilize spill kits under Mark III pumps. 							
8. Division/Group Communication Summary							
Function	Channel	RX Frequency N/W	RX Tone/NAC	TX Frequency N/W	TX Tone/NAC	Mode	
COMMAND	1	168.1000	123.0	170.4500	123.0	A	
TACTICAL	5	168.6000	123.0	168.6000	123.0	A	
AIR TO GROUND CMD	14	169.1500	0.0	169.1500	0.0	A	
9. Prepared By (Resource Unit Leader)				Approved By (Planning Section Chief)		Date	Time
<i>Gary Thompson</i>				<i>Corey Rose</i>		08/10/2015	1000

Division/Group Assignment List (ICS 204 WF)

1. Incident Name:				3.			
MAD_RIVER_COMPLEX				Branch:		Division/Group:	
2. Operational Period: NIGHT							
Date/Time From: 08/10/2015 1800 MON		Date/Time To: 08/11/2015 0900 TUE		LASSIC			
4. Operations Personnel							
OPERATIONS CHIEF				BRANCH DIRECTOR		COREY ROSE	
DIVISION/GROUP SUPERVISOR		JAYSON W SMITH TROY MAGUIRE (T)		AIR ATTACK SUPERVISOR			
5. Resources Assigned this Period							
Strike Team / Task Force / Resource Designator		LWD	Leader		Number Persons	Drop Off PT./Time	Pick Up PT./Time
ENG6 ENGINE - T6 - SMITHFIELD FD - B40 E-6		08/14	BRANDT PITCHER		3	DP53/1700	DP53/0800
DOZ2 DOZER - T2 - JW MORRISON 1 E-208		08/20	MATTHEW MORRISON		2	DP53/1700	DP53/0800
HEQB SAMUEL JAMES REYNOLDS O-219		08/22			1	DP53/1700	DP53/0800
FOBS ANDREW RUTH O-269		08/23			1	DP53/1700	DP53/0800
FOBS JOSH HAMPTON O-267		08/23			1	DP53/1700	DP53/0800
SOFR SCOTT A BELKNAP O-116		08/19			1	DP53/1700	DP53/0800
6. Control Operations/Work Assignments:							
Patrol and mopup on the 01S07 Road to contain fire to the northwest side of the road. Provide structure defense in the Swayback area as conditions dictate. Contact Day Operations and Day Division YY for additional resource assistance.							
7. Special Instructions:							
<ul style="list-style-type: none"> a. Use caution around snags and flag as needed for safety. b. Identify snags to be fallen with appropriate tape. c. Use caution while driving on all roads due to narrowing and other roadway hazards d. **DO NOT OPEN RECREATIONAL GATES ON FOREST* e. Be aware of wildlife in the fire area and use caution when encountered. f. Backhaul excess equipment and trash. g. Verify status of all accountable property. GPS location when moved or placed and report coordinates to supply. h. Utilize spill kits under Mark III pumps. 							
8. Division/Group Communication Summary							
Function	Channel	RX Frequency N/W	RX Tone/NAC	TX Frequency N/W	TX Tone/NAC	Mode	
COMMAND	1	168.1000	123.0	170.4500	123.0	A	
TACTICAL	6	166.7250	123.0	166.7250	123.0	A	
AIR TO GROUND CMD	14	169.1500	0.0	169.1500	0.0	A	
9. Prepared By (Resource Unit Leader)				Approved By (Planning Section Chief)		Date	Time
Gary Thompson				[Signature] PSC 2		08/10/2015	1100

MAD RIVER COMPLEX SAFETY MESSAGE

Night Shift 1800-0900

Monday-Tuesday 08/10-11/2015

MAJOR HAZARDS:

- POTENTIAL FOR ACTIVE FIRE BEHAVIOR WITH ALLIGNMENT OF WIND/SLOPE
- DRIVING ON COUNTY AND INCIDENT ROADS
- HAZARDOUS TREES

Watch out Situation: Unfamiliar with weather and local factors influencing fire behavior.

- **Fire Behavior** – Four years of drought has resulted in low live fuel moisture earlier in the season than normal as well as very low dead fuel moistures. With the potential for lower relative humidity above 4,000 feet be prepared for the possibility of active fire most of the night. To help mitigate this concern maintain situational awareness and insure that LCES is in place and being adhered to.
- **Driving on the Incident** – Forest System Roads in areas where personnel will be working can be narrow, winding with few wide spots for turning around or getting by opposing traffic. Be alert for rock and other debris on roads in burned areas. The County roads have good running surfaces that can result in excessive speeds. Inattention, distracted driving, or nodding off due to fatigue could easily result in tragedy. Keep your speed down. Drive with headlights on. Make sure drivers are well-rested. Increase following distances on dusty roads.
- **Hazardous Trees** – Perhaps the safety issue with the highest probability for serious injury is snags and green hazardous trees. This is particularly true at night when it is difficult to see and size up trees. To the extent possible take advantage of daylight to assess hazardous trees. Review page 22 of the 2014 IRPG for hazard tree safety.

MOUNTAIN DRIVING

Driving presents one of the greater risks faced by personnel on this incident. Drive defensively at appropriate speeds which allow you to react to meeting the unexpected. Be able to stop your vehicle within one half of the visible distance on blind curves. Driving demands your full attention. Pull off the road in a safe location when placing or receiving a cell phone call. Chock vehicles parked on slopes. Use backers whenever available.

Symptoms & Signs of Heat Illness

Heat Exhaustion: Victim will have cool, clammy skin; pale coloring; feel weak, dizzy and/or nauseous.

Treatment – Have individual sit in shade or cool area; administer fluids; loosen clothing and assure rest.

Heat Stroke: *This is a life-threatening medical emergency!!*

Victim will have hot, dry, red skin and possible convulsions. These symptoms can progress to unconsciousness and death!

Treatment – Initiate emergency medical procedures outlined in incident Med Plan. Immediately cool individual's body by pouring water over them, especially the head and upper body. Monitor the victim and provide whatever medical support necessary. Placing ice around the neck, groin and armpits can help speed the cool down.

Mad River Complex CA-SRF-1433 - Monday, August 10-11, 2015 Night Shift

Location	Hazard	Control or Abatement Action
ALL GROUPS	Night Operations	<ul style="list-style-type: none"> * Maintain high visibility in work area and wear vest while in roadway. * Use glow sticks to mark hazards. * Ensure personnel have a personal light (headlamp) * Watch for signs of fatigue * Take breaks away from areas of known hazard * Scout and evaluate all areas of work prior to engagement * Watchout Situation – In country not seen in daylight
Lassic & 36 GROUPS	Heavy Equipment Operations	<ul style="list-style-type: none"> * Ensure communications are established with operator prior to work * Maintain a 50'-100' exclusion area around equipment or 2 ½ times the canopy height * Use headlamp and/or glow sticks so the operator can see you * Avoid working below equipment where rolling material could jeopardize safety * Before moving or transporting equipment identify low hanging wires, ensure there is clearance
ALL GROUPS	Hazard Trees	<ul style="list-style-type: none"> * Follow "Hazard Tree Safety" guidelines, IRPG (2014) page 22&23 * Post lookouts in mop-up areas with high concentrations of danger trees * Don't park vehicles or take breaks in areas with high concentrations of hazard trees * Establish "Decision Points" for disengagement during high wind events * Maintain situational awareness
ALL GROUPS	Driving and Traffic	<ul style="list-style-type: none"> * Practice "Defensive Driving" techniques * Honk horn to alert personnel when backing * Use spotters when backing * Always use headlights * No texting while driving * Drive at posted or slower speed limits as warrant * Seat Belts are mandatory * Be on the alert for opposing traffic that may be in your lane * Watch out on narrow, winding roads that may have steep drop offs * Use chock blocks, turn wheels into hill * Watch for wildlife and livestock on all roads * Be prepared for sudden, unexpected stops
ALL GROUPS	Power Utilities and Gas Lines	<ul style="list-style-type: none"> * Notify all personnel of downed electrical lines * Be aware of utility restoration in your work area * Refer to the IRPG (2014) pg. 24-25 for Power Line Safety * Always treat downed wires as energized * Identify and avoid high-tension transmission lines * Identify and avoid high pressure natural gas lines * Identify and avoid damaged gas service near structures
ALL GROUPS	Potential for Spotting and Severe Fire Behavior	<ul style="list-style-type: none"> * Share weather observations and IMET updates with all personnel assigned to division * Establish "Decision Points" to withdraw * Ensure LCES is in place (Lookout, Communications, Escape route and Safety Zone) * Use "Risk Management" process prior to taking action, refer to IRPG (2014) pg.1 * Review "Severe fire behavior potential" IRPG (2014) pg. 68 * Maintain adequate escape routes and safety zones; continue to re-evaluate throughout the shift * Factor in drought conditions and local ERC prior to operations * Base all actions on past, current and expected behavior of the fire
ALL GROUPS	Fireline Hazards and Mop Up	<ul style="list-style-type: none"> * Do not work directly above or below personnel during mop-up operations * Identify and make known burning stumps or roots that may cave In * Wear appropriate PPE * Watch for falling, rolling debris on steep slopes * Alert crew personnel of rolling debris by yelling to affected individuals * Position debris that could roll vertically on slope * Watch for weakened trees that may pose danger or fall * Scout areas for mop up prior to work * Maintain 8'-10' spacing when working & walking
ALL GROUPS	Fatigue, Overexertion dehydration and heat related illness	<ul style="list-style-type: none"> * Drink fluids throughout operational period (water and Gatorade) not energy drinks * Rotate crews out of smoky areas * Follow work / rest guidelines * Set a reasonable work pace and allow adequate rest breaks * Use buddy system to monitor personnel of heat related and fatigue issues * For Heat Related Injuries refer to IRPG (2014) pg.103
ALL GROUPS	Marijuana Plantations	<ul style="list-style-type: none"> * Leave area quietly in the same direction that you entered and notify DIVS * Watch for hazardous materials and be aware of possible traps in the grow area * Use extreme caution during encounters * Individuals guarding plantation may be armed * Grower may become confrontational, maintain calm demeanor and leave area
ALL GROUPS	Communication	<ul style="list-style-type: none"> * Maintain communication with aviation resources and suppression organization * Ensure all know frequency and protocol for contacting resources * Utilize the ICS 205 and 204
Lassic & 36 GROUPS	Firing Operations & Devices	<ul style="list-style-type: none"> * Only personnel trained in the use of each device will be authorized to use firing equipment * Ensure all personnel are aware of firing operation that may affect them * Wear appropriate PPE * Ensure aerial/ground ignition plans have been adequately developed and personnel are briefed
ALL GROUPS	Environmental Hazards	<ul style="list-style-type: none"> * Be alert for rattlesnakes, watch footing and hand placement around rocks * Check yourself for ticks, watch for bees and other insects that bite or sting * Be alert for bears, cougars and other wildlife * Poisonous plants - identify plants and avoid; change and wash clothing and shower regularly
Lassic GROUP	Naturally Occurring Asbestos	<ul style="list-style-type: none"> * Avoid disturbing areas of Serpentine rock formations * Avoid dusty conditions to reduce exposure * Limit dust generating activities Avoid or minimize tracking dust into vehicles

INCIDENT RADIO COMMUNICATIONS PLAN		Incident Name			Date/Time Prepared			Operational Period Date/Time		
COMMUNICATIONS PLAN		Mad River Complex SRF-001433			8/10/15, 1100 hrs			8/10-11/15, 1800-0900		
Zh / Ch	Function	Channel Name/Trunked Talkgroup	Assignment	RX Freq	RX Tone/NAC	TX Freq	TX Tone/NAC	Mode A, D, M	Remarks	
1	Command	CMD 1	All Divisions	168.1000	0.0	170.4500	123.0	A	Medical	
2	Command	CMD 2	All Divisions	170.0125	0.0	165.2500	123.0	A	Medical	
3	Command		Future use							
4	Tactical	TAC 4	36 Group	166.5500	123.0	166.5500	123.0	A		
5	Tactical	TAC 5	Ruth Group	168.6000	123.0	168.6000	123.0	A		
6	Tactical	TAC 6	Lassic Group	166.7250	123.0	166.7250	123.0	A		
7	Tactical	TAC 7	unassigned	166.7750	123.0	166.7750	123.0	A		
8	Tactical	TAC 8	unassigned	168.2500	123.0	168.2500	123.0	A		
9	Tactical	TAC 9	unassigned	159.4725	123.0	159.4725	123.0	A		
10	Tactical	TAC 10	unassigned	154.2875	123.0	154.2875	123.0	A		
11	Tactical	TAC 11	unassigned	154.3025	123.0	154.3025	123.0	A		
12	Dispatch	SRF-2 FN	IA & Emergency Backup	168.7250	0.0	170.1250	103.5	A	Tone 8: Local Dispatch - IA and emergency backup	
13	Tactical	CALCORD	Medical	156.0750	156.7	156.0750	156.7	A	Life Flight, etc.	
14	Air - Ground CMD	A-G 1	All Divisions	169.1500	0.0	169.1500	0.0	A		
15	Air - Ground TAC	N/A	N/A		0.0		0.0	A		
16	Emergency only	GUARD	All Divisions	168.6250	0.0	168.6250	110.9	A	AIR GUARD - emerg. use only-Tone 1	
17										
18										
19										
20	Emergency only	GUARD	All Divisions	168.6250	0.0	168.6250	110.9	A	AIR GUARD - emerg. use only -Tone 1	

Prepared By (Communications Unit Leader) *Greg Ely*

Greg Ely, COML

Incident Location
 County Trinity Latitude, Longitude N 40 12.334, W 123 17.844

Deviation is assumed to be narrow band unless otherwise noted in the remarks. Mode refers to either "A" (analog), "D" (digital) or "M" (mixed mode). 1/14/14 v.5

MEDICAL PLAN

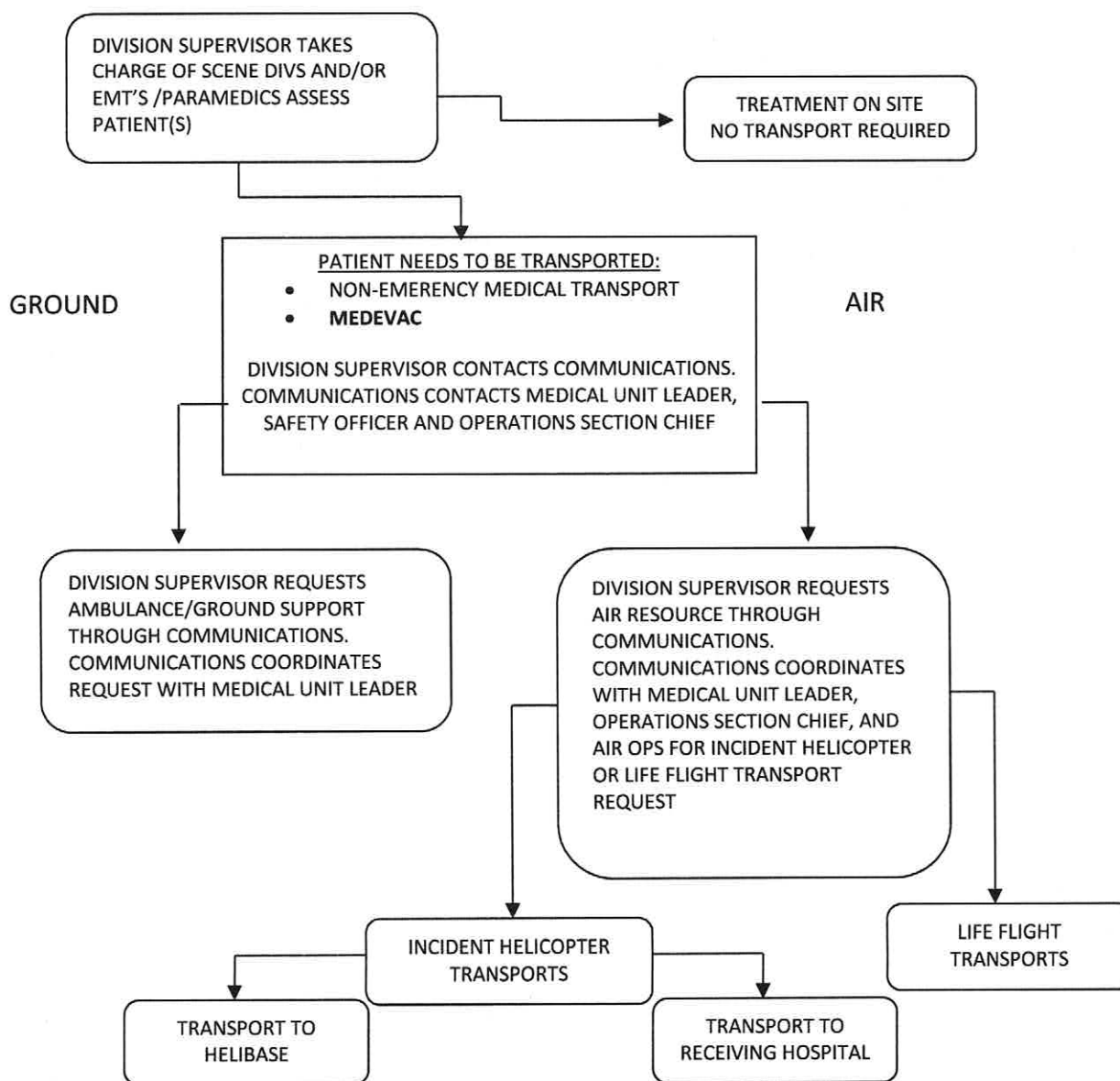
1. Incident/Project Name				2. Operational Period				
Mad River Complex				Date/Time 08/10-11/2015 - 1800-0900				
2. Aid Station								
Name	Complete Address	Phone	Advanced Life Support (ALS) Yes No					
Frontline Medical	Mad River ICP Flying AA Ranch Ruth Lake, CA	530-927-8133	XX					
3. Ambulance Services								
Name	Complete Address	Phone	Advanced Life Support (ALS) Yes No					
Ukiah Medic 9150	Mad River ICP	707-513-0004	XX					
Ukiah Medic 9115	Route Complex ICP	707-574-6853	XX					
Trinity County Life Support Medic 305	DP 53-DAY/Crook Creek Spike- NIGHT	530-623-2500	XX					
Southern Area Trinity Rescue	153 A Van Duzen Rd. Mad River, CA	707-574-6421	XX					
4. Air Ambulance Services								
Name	Phone	Type of Aircraft & Capability						
CAL FIRE H102 Day Hoist	707-726-1268	B205A++ Hoist						
CHP H14/H16 Day Hoist	530-242-3210	A Star B3 Hoist						
CA ANG Guard 825 North Ops Hoist/Extraction Helo	530-243-1434	H60 (Blackhawk) NVG/Hoist						
PHI Med 43/REACH	800-597-9571	EC 135 IFR/NVG B407 NVG						
5. Hospitals								
Name Complete Address	GPS Datum – NAD 83 Coordinate Standard Degrees Decimal Minutes DD° MM.MMM' N - Lat DD° MM.MMM' W - Long		Travel Time Air Gnd		Phone	Helipad Yes No		Level of Care Facility
	Lat:		Min	HRS				
St Joseph Hospital 2700 Dolbeer St Eureka, CA 95501	Long:	N 40 47.02 W 124 23.67	20	2.5	707-269-4250 707-442-8646	X		Level II Trauma Center
Shasta Regional Medical Center 110 Butte St. Redding, CA 9600	VHF:		30	3	530-244-5353 530-243-4042	X	<input type="checkbox"/>	
	Lat:	N 40 35.18						
	Long:	W122 23.13						
Redwood Memorial Hospital 3300 Renner Dr. Fortuna, CA 95540	VHF:			2.5	707-725-3361	<input type="checkbox"/>	X	
	Lat:							
	Long:							
Mercy Medical Center 2175 Rosaline Redding, CA 96001	VHF:		30	3	530-225-7201 530-242-4401	X	<input type="checkbox"/>	Level II Trauma Center
	Lat:	N 40 34.29						
	Long:	W 122 23.67						
UC Davis Medical Center 2315 Stockton Blvd Sacramento, CA 95817	VHF:		1.5	5	916-734-3790 916-734-5669	X	<input type="checkbox"/>	Level I Trauma Center Burn Center
	Lat:	N 38 33.17						
	Long:	W 121 27.05						
6. Prepared By (Medical Unit Leader)								
Robert Russell MEDL			7. Date/Time		8. Reviewed By (Safety Officer)		9. Date/Time	
08/10/2015 2000			Marty Hamel SOF1		08/10/2015 2000			

Initiate care with available resources at scene and notify DIVS when an injury occurs.

The DIVS, or designee, shall coordinate the incident and direct necessary actions. Take the following actions:

1. Determine the nature of the emergency.
2. If the emergency is a medical injury/illness, determine if the injury/illness is life threatening.
3. If the injury is life threatening, then clear designated frequency for emergency traffic.
4. Identify the on-scene point of contact by position.
5. Contact the Medical Unit Leader immediately.
6. Identify number injured, patient assessment(s) and location (geographic and/or GPS coordinates).
7. Identify on-scene medical personnel by position and last name (i.e. EMT Jones).
8. Identify preferred method of patient transport.
9. Determine any additional resources or equipment needed.

Continually evaluate the Evacuation Plan, develop contingencies in the event the first plan is not effective.



Medical Incident Report					
FOR ALL MEDICAL EMERGENCIES: IDENTIFY ON SCENE INCIDENT COMMANDER BY NAME AND POSITION AND ANNOUNCE "MEDICAL EMERGENCY" TO INITIATE RESPONSE FROM IMT COMMUNICATIONS/DISPATCH.					
Use items one through nine to communicate situation to communications/dispatch.					
1. CONTACT COMMUNICATIONS/DISPATCH <i>Ex: "Communications, Div. Alpha. Stand-by for Priority Medical Incident Report." (If life threatening request designated frequency be cleared for emergency traffic.)</i>					
2. INCIDENT STATUS: <i>Provide incident summary and command structure.</i>					
Nature of Injury/Illness			<i>Describe the injury (Ex: Broken leg with bleeding)</i>		
Incident Name			<i>Geographic Name + "Medical" (Ex: Trout Meadow Medical)</i>		
Incident Commander			<i>Name of IC</i>		
Patient Care			<i>Name of Care Provider (Ex: EMT Smith)</i>		
3. INITIAL PATIENT ASSESSMENT: <i>Complete this section for each patient. This is only a brief, initial assessment. Provide additional patient info after completing this 9 Line Report.</i>					
Number of Patients:	Male / Female	Age:	Weight:		
Conscious? <input type="checkbox"/> YES <input type="checkbox"/> NO = MEDEVAC!					
Breathing? <input type="checkbox"/> YES <input type="checkbox"/> NO = MEDEVAC!					
Mechanism of Injury: <i>What caused the injury?</i>					
Lat/Long (Datum WGS84) <i>Ex: N 40° 42.45' x W 123° 03.24'</i>					
4. SEVERITY OF EMERGENCY, TRANSPORT PRIORITY					
SEVERITY			TRANSPORT PRIORITY		
<input type="checkbox"/> URGENT-RED Life threatening injury or illness. <i>Ex: Unconscious, difficulty breathing, bleeding severely, 2° – 3° burns more than 4 palm sizes, heat stroke, disoriented.</i>			Ambulance or MEDEVAC helicopter. Evacuation need is IMMEDIATE.		
<input type="checkbox"/> PRIORITY-YELLOW Serious Injury or illness. <i>Ex: Significant trauma, not able to walk, 2° – 3° burns not more than 1-2 palm sizes.</i>			Ambulance or consider air transport if at remote location. Evacuation may be DELAYED.		
<input type="checkbox"/> ROUTINE-GREEN Not a life threatening injury or illness. <i>Ex: Sprains, strains, minor heat-related illness.</i>			Non-Emergency. Evacuation considered Routine of Convenience.		
5. TRANSPORT PLAN:					
Air Transport: (Agency Aircraft Preferred)					
<input type="checkbox"/> Helispot		<input type="checkbox"/> Short-haul/Hoist		<input type="checkbox"/> Life Flight	<input type="checkbox"/> Other
Ground Transport: <i>Click here to enter text.</i>					
<input type="checkbox"/> Self-Extract		<input type="checkbox"/> Carry-Out		<input type="checkbox"/> Ambulance	<input type="checkbox"/> Other
6. ADDITIONAL RESOURCE/EQUIPMENT NEEDS:					
<input type="checkbox"/> Paramedic/EMT(s)		<input type="checkbox"/> Crew(s)		<input type="checkbox"/> SKED/Backboard/C-Collar	
<input type="checkbox"/> Burn Sheet(s)		<input type="checkbox"/> Oxygen		<input type="checkbox"/> Trauma Bag	
<input type="checkbox"/> Medication(s)		<input type="checkbox"/> IV/Fluid(s)		<input type="checkbox"/> Cardiac Monitor/AED	
<input type="checkbox"/> Other (i.e. splints, rope rescue, wheeled litter)					
7. COMMUNICATIONS:					
Function	Channel Name/Number	Receive (Rx)	Tone/NAC *	Transmit (Tx)	Tone/NAC *
<i>Ex: Command</i>	<i>Forest Rpt, Ch. 2</i>	<i>168.3250</i>	<i>110.9</i>	<i>171.4325</i>	<i>110.9</i>
COMMAND					
AIR-TO-GRND					
TACTICAL					
*(NAC for digital radio system)					
8. EVACUATION LOCATION:					
Lat/Long (Datum WGS84) <i>EX: N 40 42.45' x W 123 03.24'</i>					
Patient's ETA to Evacuation Location:					
Helispot/Extraction Size and Hazards:					
9. CONTINGENCY:					
Considerations: <i>If primary options fail, what actions can be implemented in conjunction with primary evacuation method? Be thinking ahead...</i>			REMEMBER: Confirm ETA's of resources ordered Act according to your level of training Be Alert. Keep Calm. Think Clearly. Act Decisively.		

**Mad Complex Fire
Human Resource Message
August 10th, 2015**

What Makes Communication Difficult?

Words Mean Different Things to Different People

Look up 500 different words in a dictionary and you will find over 2,500 meanings and/or definitions for those same words. To communicate effectively, both the speaker and the listener must have a mutual understanding of the words they use.

The Presenting Problem May Not Be the Major Concern

People often are hesitant to talk about what is really bothering them. The “real issues” are what they tend to hide most carefully. Trying to solve minor problems while the real problems are not clearly understood does not work. Doing this is a major source of ineffectiveness.

Filters Distort What People Hear and Say and Emotions Are Blinding

Our own expectations, experiences, values, biases, self-images, beliefs, ideas, worldview, etc. create a “zone of distortion”...the filter that distorts our interpretation of another person’s message. People are often unaware of how their emotions affect communications with others and emotions can literally put some people out of control and prevent them from communicating effectively.

Here’s what to do to improve communication:

Stand in the other person’s shoes. You have stood in the other person’s shoes when you repeat their point of view back to their satisfaction.

Drop your point of view long enough to take another way of seeing things.

Remember the point of communication is not to win or be right, but to either bring people together or clarify their differences.

“Leadership does not instill privilege, it confirms responsibility.”

Janine Summy, Human Resource Specialist

Finance Message

For Federal Employees - Saturday, 8/8/15 was last day of payperiod. If you do not have access to complete your time yourself, we have a computer set up on the deck outside Finance for you to come and complete your time. If you are not able to do this and need Finance to fax your time to your home unit, please come see us and complete a fax request.

Contract Equipment – We have a couple of Incident Contract Project Inspectors here at the Incident. All Contracted Resources need to check in with them. They are located in the lodge with Finance. If you have not already done so, please be sure to tie in with them before you go out on the line.

REMINDER.....Please be sure you are turning in your CTR or Shift Tickets to Finance DAILY.

COME TO FINANCE

C-25 Iron Mountain

C- 43 Inyo Reg,

E-211 N. State Equip

E-18 LNF WT3 (E-256)

E-196 Walter Moody

E- 76.2 Arthur Gonzales

E- 181 Red Truck

E- 208 JW Morrison

E- 209 JW Morrison

E- Wurlitzer

O- 34 Bill Bryant

O- 312 Anthony Davis

O- 182 Eric Haskins

O- Jason Amis

O-116 Scott Belknap

O-283 NORTH ZONE FALLERS

O- 280 Randy Shavlis

O-21 Anthony James

O-159 Dillon

Mad River Complex Resource Extensions

Resources may be extended on the Mad River Complex upon completion of the Resource Extension Request Form. These are available in Demob and outside Resource Unit with the resource filling out the requested information.

Signatures required on the form are:

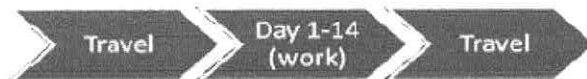
1. The requesting Supervisor/ resource (crew/engine/Strike Team/Overhead)
2. Home Unit Supervisor (faxing will be available in Demob)
3. Incident Supervisor (Command or General Staff)
4. Incident Commander signature (as required by requesting resource) or Incident C&G
5. GACC Coordinator (all engines, crews and out of region overhead)
6. NICC Coordinator (only if National Resource)

The completed form will be dropped off at Demob for documentation and will fax to the GACC any resource (engine, crews, National Resource/out of Region overhead) requiring GACC/NICC extension approval. Approval of resource extension will be updated in eISuite by Demob.

Below is the excerpt from the Incident Business Handbook regarding extensions.

Upon completion of the standard 14 day assignment, an extension of up to an additional 14 days may be allowed (for a total of up to 30 days, inclusive of mandatory days off, and exclusive of travel). Regardless of extension duration, 2 mandatory days off will be provided prior to the 22nd day of the assignment. When personnel are required to take a mandatory day off, which falls on their normal day off, there will be no pay compensation.

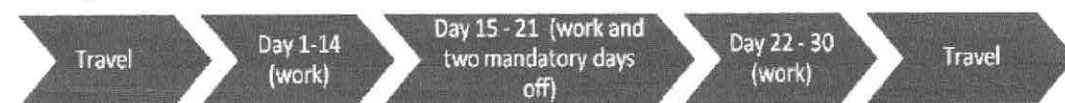
14 Day Scenario



21 Day Scenario

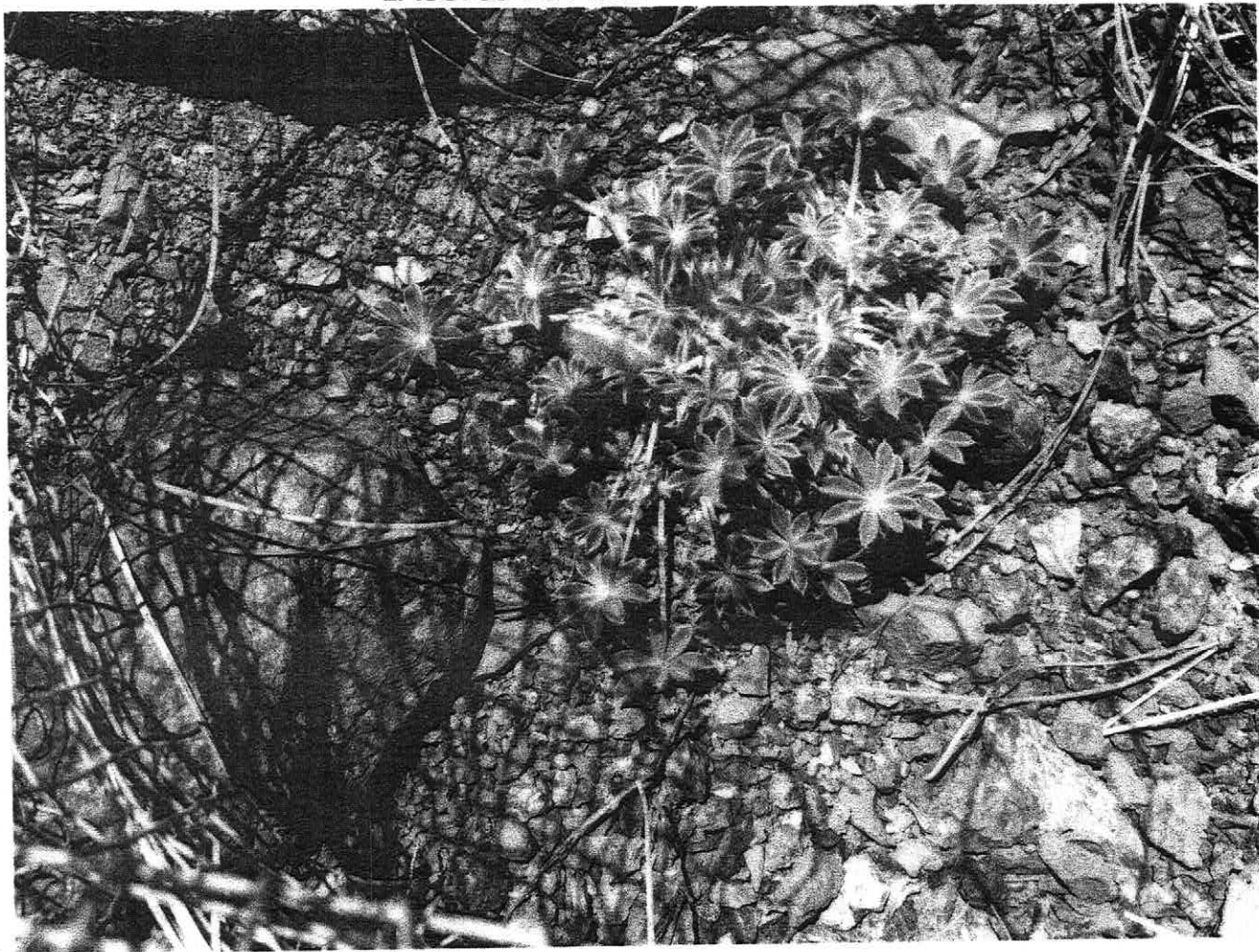


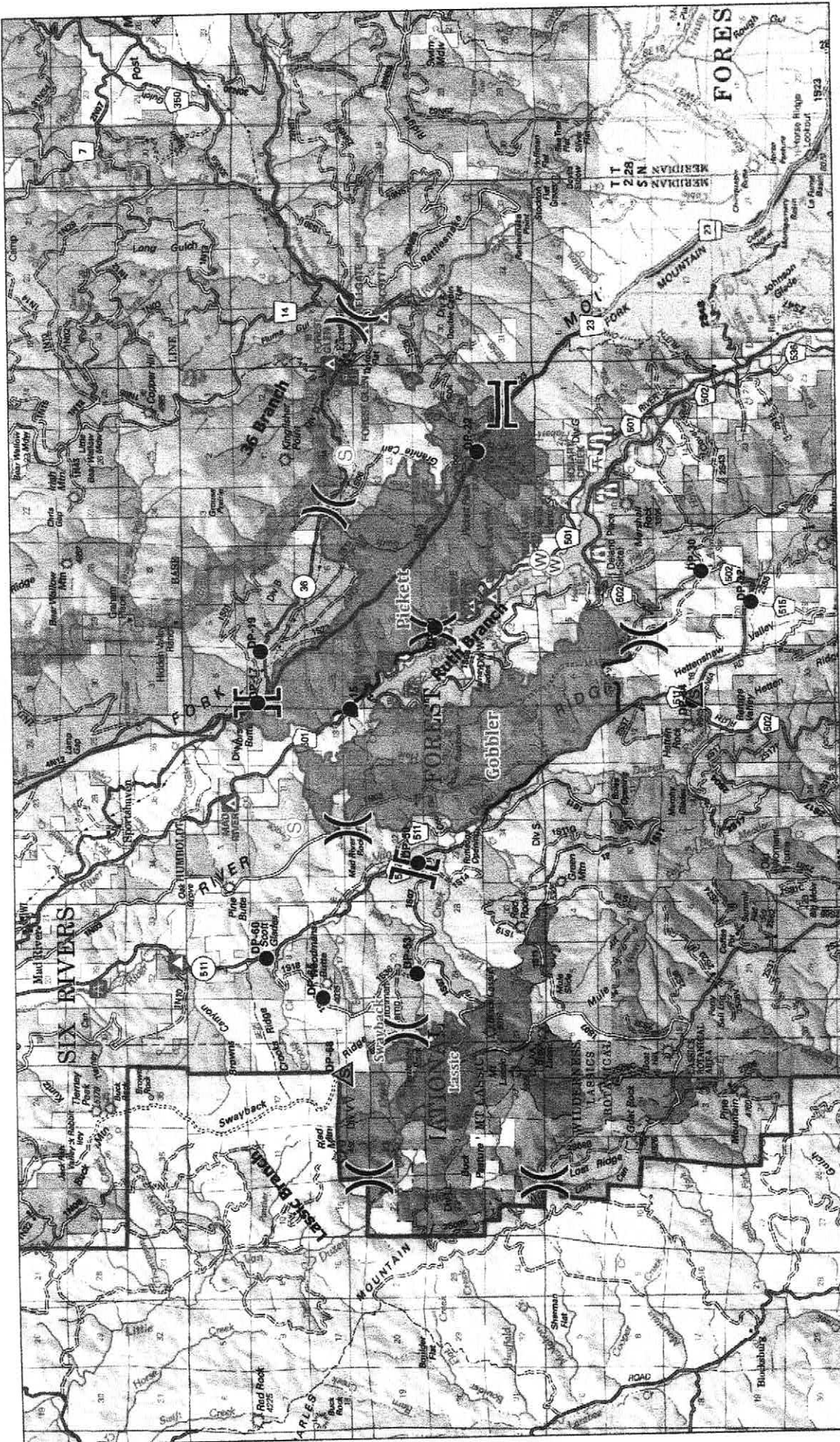
30 Day Scenario



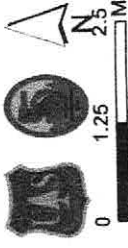


LASSICS LUPINE





- Drop Point
- Staging Area
- Water Source
- Fire Perimeter
- Completed Line
- Branch
- Division

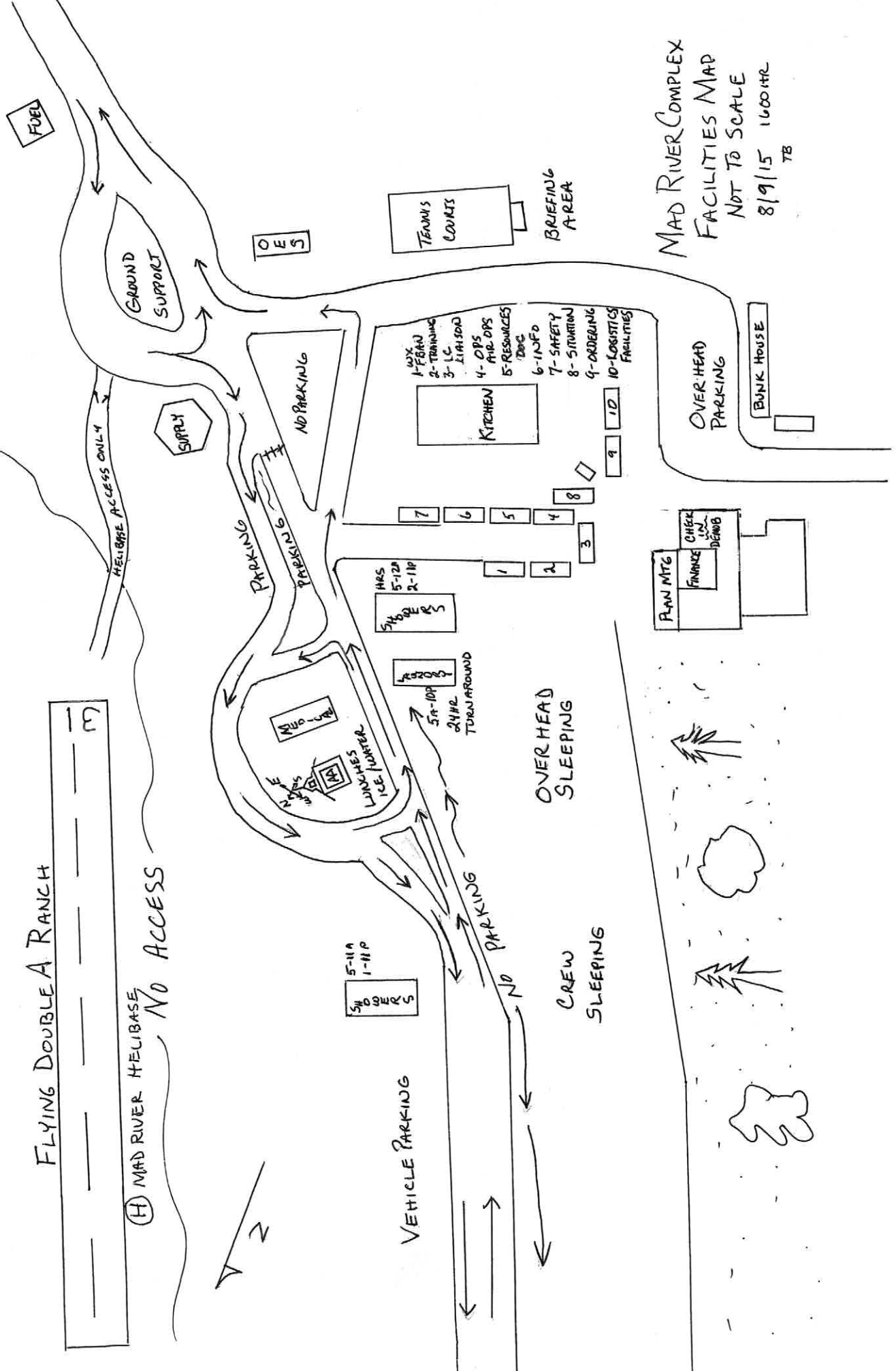


TRANSPORTATION MAP

Mad River Complex
CA-SRF-1433
August 6, 2015

FLYING DOUBLE A RANCH

(H) MAD RIVER HELIBASE NO ACCESS



MAD RIVER COMPLEX
 FACILITIES MAP
 NOT TO SCALE
 8/9/15 1600HR
 TB

Current as of 8-Aug-15

Mad River Complex Phone List

	Mad River Complex Hard Lines	FAX
Communications	707- 574-6058	
Check in / Demob	707- 574-6240	707-574-6242
Finance	707- 574-6246	707-574-6250
IC	707- 574-6094	
Info	707- 574-6289	
Logistics	707- 574-6063	
Medic	707- 574-6056	
Air Ops	707- 574-6292	
Ordering	707- 574-6263/6191	707-574-6306
Plans	707- 574-6230	

Incident Issued Cell Phones

First	Last	Number	
Tim	Baal	925-872-8547	PSC
John	Badaracco	925-817-9943	GSUL
Jacque	Beidl	925-407-6366	
Lewis	Brostrom	925-407-6360	
Marie	Butler	925-588-6854	ORDM
Tom	Donohoe	925-588-6741	
Greg	Ely	925-872-8578	COML
Jan	Flemming	925-324-9188	RSUL
Teresa	Fork	925-588-6109	FSC
Wally	Grogan	925-872-8559	FACL
Scott	Hagerty	925-588-6845	
James	Jones	925-519-6314	BCMG
Steve	Kliest	925-817-9856	PIO
Jonathon	Lee	925-872-8557	DIVS
Rick	Leuck	925-407-6361	PSC
Steve	Paes	925-872-8562	FBAN
Mark	Savage	925-872-8556	PIO
Carl	Schwope	925-588-6818	OSC
Jerome	Skraba	925-407-7832	
Tracy	Steman	925-324-9456	LSC
Larry	Stephens	925-407-7004	
Bob	Summerfield	925-872-8568	
Steve	Watkins	925-407-6352	

