

MAD RIVER COMPLEX

CA-SRF-001433


P5J0JC (0510)



August 14-15, 2015

NIGHT Operational Period

1800 - 0900

INCIDENT OBJECTIVES	1. Incident Name Mad River Complex	2. Date 8/14/15	3. Time 1100
4. Operational Period NIGHT 08/14/15 1800 - 0900			
5. General Control Objectives for the Incident (include alternatives) <u>Strategic Framework</u> Suppress fires within the complex by implementing necessary tactics at the identified, preferred perimeter locations. Ensure resource commitment is commensurate with values at risk. Base activities on current situation, considering: fire potential, time of season, and commitment of resources both locally and nationally. <u>Leaders Intent</u> Provide the highest level of customer services to all involved with or impacted by the Mad River Complex. All incident assigned personnel should be prepared to take the appropriate actions regarding: <ul style="list-style-type: none"> • Monitor your fatigue and manage it appropriately. • Be “service oriented” and professional in all interactions, both internal and external to the incident. • Place personal safety and that of others as the highest priority. • Make risk informed decisions by understanding values to be protected. • Respond appropriately to incidents within the complex. <u>Objectives</u> <ul style="list-style-type: none"> • Provide for Firefighter and Public safety through hazard recognition and application of the risk management process. • Reduce the threat to private property, residences and infrastructure by suppressing the fire within the planned perimeter. • Protect natural resources by managing for fire effects during ignition operations. • Engage in fire suppression operations that are cost effective, but commensurate with values at risk. • Protect wilderness values and botanical resources by ensuring Minimum Impact Suppression Tactics (MIST) are applied. 			
6. Weather Forecast for Period <u>FORECAST FOR FRIDAY NIGHT:</u> <ul style="list-style-type: none"> • WEATHER: Mostly Clear. • TEMPERATURES: Min Valley bottom...40-45 F; Ridges...50-55 F • HUMIDITY: Max Valley bottom...85-95%; Ridges...70-80%. Falling to 50% by 0600 • 20-FOOT WIND: <ul style="list-style-type: none"> ○ SLOPE/VALLEY - Upslope 2-4 mph...becoming downcanyon/downslope less than 4 mph after 2200. ○ RIDGETOP - North-northeast 5 to 10 mph overnight • INVERSIONS/STABILITY: <i>Smoke will settle in the river valleys and canyons overnight. Visibility may drop to near zero at times. Smoke will settle in the river valleys and canyons overnight. Visibility may drop to near zero at times.</i> 			
7. General Safety Message <ul style="list-style-type: none"> • Hazardous driving – Follow posted speed limits or slower: 25 MPH through Ruth & other communities • Watch out Situation of the Day – 2. In country not seen in daylight. • LCES must be established prior to implementing burning operations (IRPG p. 6). 			
8. Attachments (mark if attached)			
<input checked="" type="checkbox"/> Organization List - ICS 203 <input checked="" type="checkbox"/> Div. Assignment Lists - ICS 204 <input checked="" type="checkbox"/> Communications Plan - ICS 205 <input checked="" type="checkbox"/> READ Message	<input checked="" type="checkbox"/> Medical Plan - ICS 206 <input checked="" type="checkbox"/> Incident Map <input checked="" type="checkbox"/> Fire Weather Forecast <input checked="" type="checkbox"/> ICS 214	<input checked="" type="checkbox"/> Safety Message <input type="checkbox"/> Air Ops Summary ICS 220 <input checked="" type="checkbox"/> Base Camp Map <input checked="" type="checkbox"/> Fire Behavior	
9. Prepared by (Planning Section Chief) Tim Baal/ Dennis Cooper/ Rick Leuck (T) 		10. Approved by (Incident Commander) Mike Minton	

ORGANIZATION ASSIGNMENT LIST (ICS-203)

1. Incident Name: MAD RIVER COMPLEX		2. Operational Period: NIGHT		Date From: 8/14/2015 Time From: 1800		Date To: 8/15/2015 Time To: 0900	
3. Incident Commander(s) and Command Staff:				7. Operations Section: LES CURTIS			
Incident Commander	MIKE MINTON		Chief	LES CURTIS			
Deputy IC	CARLTON JOSEPH		Planning Ops	DON SMITH/ DONOVAN LEE (T)			
Safety Officer	MARTY HAMEL / DAVE MORTON / CHARLOTTE JORDAN (T) / DAVE VITWAR (T)						
Public Information Officer	STEVE KLIEST / MARK SAVAGE		Branch Director				
Liaison Officer	RICK ALPERT /FRED FLORES		Division/Group	36	JORDAN McKNIGHT TROY MAGUIRE (T)		
			Division/Group	RUTH	ALAN HUSKINS		
			Division/Group	LASSIC	JAYSON SMITH		
			Division/Group	CONTINGENCY			
4. Agency/Organization Representatives:				Division/Group			
SIX RIVERS NF	DAN DILL		Branch				
SHASTA TRINITY NF	SARAH TOMSKY		Branch Director				
CHP	TAMI McCANLESS		Division/Group				
SOUTH TRINITY VFD	DON STEWART / BILL GERMAN		Division/Group				
TRINITY SO	JAKE HESS		Division/Group				
OES	GARY HUMPHREY		Branch				
5. Planning Section:				Division/Group			
Chief	TIM BAAL / RICK LEUCK (T)		Division/Group				
Deputy	DENNIS COOPER		Division/Group				
Resources Unit	ROBERT ASHBY / ERIC MATYE / GARY THOMPSON		Division/Group				
Situation Unit	MIKE Mc HARGUE / TAD MORELOCK / BEAU BURLEY (T) / BOB ROGERS (T)		Division/Group				
Demobilization Unit	JIM COOLEY		Division/Group				
Documentation Unit	PHIL SETTLES		Division/Group				
Fire Behavior Analyst	STEVE PAES		Contingency				
GISS	EVAN CONKLIN / JASON DUKE (T) MELISSA VARGAS (T)		Division/Group				
Training Specialist	ALLISON JACKSON		Division/Group				
IMET	AMANDA GRANING		Division/Group				
READ	SCOTT HAGERTY / RAYMA COOLEY		Division/Group				
6. Logistics Section:				Division/Group			
Chief	TONY MARTINEZ/ JIM ECKROTH (T) TERESA STELMAN (T)		Air Operations Branch				
Support Branch			Air Ops Branch Dir.	JOHN KEESEE			
Supply Unit	MIKE BRADFORD		Air Support Grp Supervisor	CRAIG DADO			
Ordering Unit	MARIE BUTLER/ KATHY HAYDEN		Air tactical Group Supervisor	MIKE STOUT			
Facilities Unit	WALLY GROGAN		8. Finance/Administration Section:				
Ground Support Unit	JOHN BADARACCO / FRED SIMONDS		Chief	THERESA FORK			
Service Branch			Deputy				
Communications Unit	RON REGAN		Time Unit	JANICE BROWN			
Medical Unit	ROBERT RUSSELL		Procurement Unit	CHRISTOPHER FORD			
Food Unit	EDWIN MAYBERRY / DALE THOMPSON / WHITNEY VONADA (T)		Comp/Claims Unit	ANNMARIE CARLSON / PAMELA BEAUJON (T)			
			Cost Unit	ROGER SIEMERS; LEE PIPER (T)			
9. Date/Time Prepared: 8/14/15 1130		Prepared By: GARY THOMPSON, RESL			Signature: <i>Gary Thompson</i>		

Fire Weather Forecast

FORECAST NO: 21
PREDICTION FOR: NIGHT SHIFT
SHIFT DATE: Aug 14-15, 2015
TIME AND DATE
FORECAST ISSUED: Aug 14, 2015 1000 PDT

NAME OF FIRE: Mad River Complex
UNIT: Six Rivers NF
SIGNED: Amanda Graning
Incident Meteorologist



WEATHER DISCUSSION: High pressure will build over the desert southwest, nosing into the Mad River Complex, through the weekend. This will bring a warming and drying trend with daytime temperatures in the 90s and critically low afternoon humidity through at least Sunday. Tonight will also begin the trend towards poor to fair humidity recoveries overnight on the ridges for the upcoming weekend. Smoke will settle in the river valleys and canyons overnight. Visibility may drop to near zero at times.

FORECAST FOR FRIDAY NIGHT:

WEATHER: Mostly Clear.

TEMPERATURES: Min Valley bottom...48-53 F; Ridges...55-60 F

HUMIDITY: Max Valley bottom...80-95%; Ridges...70-80%. Falling into 50s by 0600

20-FOOT WIND:

SLOPE/VALLEY - Upslope 2-4 mph...becoming downcanyon/downslope less than 4 mph after 2200.

RIDGETOP - North-northeast 5 to 10 mph overnight.

INVERSIONS/STABILITY: Smoke will settle in the river valleys and canyons overnight. Visibility may drop to near zero at times.

WEATHER FORECAST FOR SATURDAY:

Mostly Sunny. Warmer and Drier. Max temps...90s. Min RH 15-25%. Northeast winds 8 to 10 mph.

OUTLOOK FOR SATURDAY NIGHT:

WEATHER: Mostly Clear.

TEMPERATURES: Min Valley bottom...50-55-F; Ridges...57-62

HUMIDITY: Max Valley bottom...80-90%; Ridges...60s%. Falling into 30s% by 0600

20-FOOT WIND:

SLOPE/VALLEY - Upslope 2-4 mph...becoming downcanyon/downslope less than 4 mph after 2200.

RIDGETOP - North 5 to 10 mph overnight.

INVERSIONS/STABILITY: Smoke settling in canyons after 2300.


SUNSET: 8:16 PM SUNRISE: 6:24 AM

REALTIME RAWS INFO for MAD RIVER COMPLEX

Location-----	Name
Lassic Branch	IRAWS 33 (SWAYBACK) Frequency 163.350, DTMF Code 0033
Div A -	MAD RIVER
36 Branch (higher elev) -	FRIEND MTN
Div G -	RUTH
Div D/F -	IRAWS 27 (FOREST GLEN) Frequency 163.350, DTMF Code 0027



FIRE BEHAVIOR FORECAST

FORECAST NUMBER: 26	TYPE OF FIRE: Wildland Fire
FIRE NAME: Mad River Complex	OPERATIONAL PERIOD: Night
DATE / TIME ISSUED: Aug 14, 2015 1200	DATE: Aug 14-15, 2015
UNIT: Six Rivers NF / Mad River	SIGNED:  Steve Paes FBAN

INPUTS

WEATHER SUMMARY:

Mostly clear.

Temperatures: 48-60

Max. Relative Humidity: 80-95% valleys; 50-80% ridgetops.

Wind: Slope/Valley- Upslope 2-4 mph becoming downcanyon/downslope 4 mph after 2200.

Ridgetop Winds- North/Northeast 5-10 mph.

GENERAL:

-The fire is burning primarily timber Fuels with some brush and grass intermix. The primary carrier of surface fire is heavy forest litter with a shrub or small tree understory.

- Fire spread will be primarily topography driven. Expect the predominant fire spread to be backing downhill. Roll out on steep slopes can contribute to rates of spread. Expect up to 10-20 chains of downhill progression during the shift.

-Head fire or torching on steep slopes can transition to crown fire, especially on slopes that align with general winds.

Rates of spread: Timber-head fire = 3-12ch/hr (depending on slope) dropping to 1-4 overnight, backing fire= 1ch/hr.
Grass- head fire 40 ch/hr dropping to 5ch/hr overnight, backing fire 1ch/hr.

Flame lengths: Timber-head fire= 8ft. dropping to 4ft. overnight, backing fire= 2ft.

Grass- head fire 5ft. dropping to 1ft. overnight, backing fire 1ft.

Probability of Ignition (PIG) = 50% shaded fuel, 80% exposed fuel, dropping to 10% valleys and 20% on ridges.

Short range spotting occurs with light winds and moderate fire activity. Spotting distances of up to ½ mile can occur with crown fire.

Dead fuel moisture contents: 1hr= 4% rising to 17% valleys and 12% ridges, 10hr = 6% , 100hr and 1000hr =10%

Live Fuel Moisture: Timber 150%, Shrubs 80%.

ERC=54...86th percentile...trending higher

SPECIFIC: All Divisions

-Expect active burning during the early portion of the shift. Activity will diminish as humidity rises. Fine fuels will stop carrying fire in lower elevations but will continue to burn all night on ridges. Down and dead fuels will continue to burn during the shift. Any wind creates the opportunity for increased fire activity with short range spotting, torching, and short crown runs on steep slopes.

-Anticipate complete fuel consumption of larger fuels due to low fuel moistures. Stumps and roots have the potential to burn out and create stump holes that will be a hazard at night.

-Firing operations in lower elevations will become ineffective 0100-0200 due to humidity recovery.

-36 GROUP: The Hwy. 36 corridor is exposed to downvalley winds. The closer fire gets to the road the more exposure it will have to valley winds. Fire activity during day shift has the potential for spotting across containment lines. When working, or looking for, spots on slopes watch out for fire below you. Watch for rollout across the 1S26 Rd. and the highway.

-RUTH GROUP: Control lines in the Mad Rv. drainage are sheltered from both ridgetop and down valley winds. Expect downslope winds during the night. Along the Van Duzen Rv. you will experience down valley winds.

-LASSIC GROUP: Lassic Fire will be exposed to ridgetop winds. Moderate humidity recovery will allow fire progression during the entire shift. Wind direction makes DIV AA the area with the highest chance of spotting across the line. Anticipate active fire behavior with single tree torching west of Signal Peak. If fire crosses Blanket Cr., expect it to have active fire behavior that will move toward control lines during the entire shift. Humidity recovery will allow firing operations to be effective all night.

AIR OPERATIONS

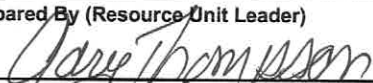
With Northwest winds, smoke from fires to the northwest and north may hamper air operations

SAFETY

Watch out for rolling burning debris or spotting starting fires below you!

Re-evaluate the time it would take to get to safety zones on steep slopes.

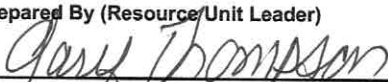

Division/Group Assignment List (ICS 204 WF)

1. Incident Name:		3.				
MAD_RIVER_COMPLEX		Branch:		Division/Group:		
2. Operational Period:		NIGHT				
Date/Time From: 08/14/2015 1800 FRI		Date/Time To: 08/15/2015 0900 SAT				
		36 GROUP				
4. Operations Personnel						
OPERATIONS CHIEF		LESLIE CURTIS		DIVISION/GROUP SUPERVISOR		JORDAN MCKNIGHT TROY MAGUIRE (T)
AIR ATTACK SUPERVISOR		MIKE STOUT				
5. Resources Assigned this Period						
Strike Team / Task Force / Resource Designator		LWD	Leader	Number Persons	Drop Off PT./Time	Pick Up PT./Time
HC2 CREW - T2 - OC 25 C-44		08/17	JEREMY VANCE	19	DP15/1900	DP15/0800
ES1 - S/T - T1 - CA-XSC - 2311A - E-53		08/15	RICHARD ALAMEDA/ REGGIE WILLIAMS (T)	22	DP15/1900	DP15/0800
ES1 S/T - T1 - 4805A E-257		08/16	ERIC DEHART	19	DP15/1900	DP15/0800
ENG4 CENTRAL WILDFIRE - 742 E-331		08/16	JOHN THORESON	3	DP15/1900	DP15/0800
ENG6 PACIFIC HABITAT & FIRE - 66 E-330		08/16	DUSTIN STEERS	3	DP15/1900	DP15/0800
DOZ2 DOZER-T2-BUCK TRUCKING 24HR E-212		08/20	DON ANDREWS	2	DP15/1900	DP15/0800
HEQB KENNETH JAMES BURNS O-246		08/22		1	DP15/1900	DP15/0800
SOFR THOMAS FRANCIS DONOHOE O-32		08/18		1	DP15/1900	DP15/0800
SOF2 RANDAL VINSON O-380		08/25		1	DP15/1900	DP15/0800
FEMP CHRIS C WRISLEY O-105		08/17		1	DP15/1900	DP15/0800
FOBS JOSH HAMPTON O-267		08/23		1	DP15/1900	DP15/0800
FOBS ANDREW RUTH O-269		08/23		1	DP15/1900	DP15/0800
6. Control Operations/Work Assignments:						
Patrol and mop up to secure the fire perimeter along Hwy 36 from DP17 to Rattlesnake Ridge (southeast of Forest Glen) to prevent fire spread north of Hwy 36 and east of Rattlesnake Ridge. Support previous firing operations on the 1S26 road system. Provide structure defense in Forest Glen area.						
7. Special Instructions:						
Use caution around snags and flag as needed for safety. Identify snags to be fallen with appropriate tape. Use caution while driving on all roads due to narrowing and other roadway hazards. Use caution while driving on Highway 36. **DO NOT OPEN RECREATIONAL GATES ON FOREST** Coordinate with PG&E for utility concerns. Backhaul excess equipment and trash. Verify status of all accountable property. GPS location when moved or placed and report coordinates to supply. Utilize spill kits under Mark III pumps.						
8. Division/Group Communication Summary						
Function	Channel	RX Frequency N/W	RX Tone/NAC	TX Frequency N/W	TX Tone/NAC	Mode
COMMAND	1	168.1000	123.0	170.4500	123.0	A
TACTICAL	4	166.5500	123.0	166.5500	123.0	A
AIR TO GROUND CMD	14	169.1500	0.0	169.1500	0.0	A
9. Prepared By (Resource Unit Leader)			Approved By (Planning Section Chief)		Date	Time
					08/14/2015	1000

Division/Group Assignment List (ICS 204 WF)

1. Incident Name:		3.				
MAD_RIVER_COMPLEX		Branch:		Division/Group: RUTH GROUP		
2. Operational Period: NIGHT						
Date/Time From: 08/14/2015 1800 FRI		Date/Time To: 08/15/2015 0900 SAT				
4. Operations Personnel						
OPERATIONS CHIEF		LESLIE CURTIS		DIVISION/GROUP SUPERVISOR		ALAN LEE HUSKINS
AIR ATTACK SUPERVISOR						
5. Resources Assigned this Period						
Strike Team / Task Force / Resource Designator		LWD	Leader	Number Persons	Drop Off PT./Time	Pick Up PT./Time
ES3 ENGINE S/T - T3 - MAD RIVER 1 E-901		08/19	JIM OBERRITER	21	DP36/1900	D936/0800
6. Control Operations/Work Assignments:						
Patrol, monitor and mop-up to secure the fire perimeter along the Van Duzen Rd., West Side Road and the Mad River Rd. to limit fire spread.						
7. Special Instructions:						
<p>Use caution around snags and flag as needed for safety. Identify snags to be fallen with appropriate tape.</p> <p>Use caution while driving on all roads due to narrowing and other roadway hazards. Use caution while driving on Highway 36.</p> <p>**DO NOT OPEN RECREATIONAL GATES ON FOREST**</p> <p>Utilize command frequency to communicate with DAY shift resources. Advise DIVS when entering / exiting division. IA resources report to communications to have radios cloned for Forest IA responses.</p> <p>Backhaul excess equipment and trash.</p> <p>Verify status of all accountable property, GPS location when moved or placed and report coordinates to supply. Utilize spill kits under Mark III pumps.</p> <p>Repopulation may occur resulting from lifting of road closures.</p>						
8. Division/Group Communication Summary						
Function	Channel	RX Frequency N/W	RX Tone/NAC	TX Frequency N/W	TX Tone/NAC	Mode
COMMAND	1	168.1000	123.0	170.4500	123.0	A
TACTICAL	5	168.6000	123.0	168.6000	123.0	A
AIR TO GROUND CMD	14	169.1500	0.0	169.1500	0.0	A
9. Prepared By (Resource/Unit Leader)			Approved By (Planning Section Chief)		Date	Time
Gary Thompson			[Signature]		08/14/2015	1000

Division/Group Assignment List (ICS 204 WF)

1. Incident Name:			3.				
MAD_RIVER_COMPLEX			Branch:		Division/Group:		
2. Operational Period: NIGHT							
Date/Time From: 08/14/2015 1800 FRI		Date/Time To: 08/15/2015 0900 SAT		LASSIC			
4. Operations Personnel							
OPERATIONS CHIEF		LESLIE CURTIS		DIVISION/GROUP SUPERVISOR		JAYSON W SMITH	
AIR ATTACK SUPERVISOR							
5. Resources Assigned this Period							
Strike Team / Task Force / Resource Designator		LWD	Leader		Number Persons	Drop Off PT./Time	Pick Up PT./Time
ENG6 ENGINE S/T - T6 - MAD RIVER 3 E-903		08/20	JEFF ASHFORD O-189		16	DP53/1900	DP53/0800
ENG3 ENGINE- T3 - BLACKTIMBER 11 E-143		08/19	TED HEBRARD		1	DP53/1900	DP53/0800
ENG6 ENGINE - T6 - SMITHFIELD FD - B40 E-6		08/14	BRANDT PITCHER		3	DP53/1900	DP53/0800
ENG6 ENGINE - T6 - NORTH LOGAN FD - BRUSH 120 E-8		08/14	JON KELLER		3	DP53/1900	DP53/0800
ENG6 ENGINE - T6 - LOGAN FD E-9		08/14	JASON GIBBONS		3	DP53/1900	DP53/0800
DOZ2 DOZER-T2-JW MORRISON 1 24HR E-208		08/20	MATTHEW MORRISON		2	DP53/1900	DP53/0800
HEQB SAMUEL JAMES REYNOLDS O-219		08/22			1	DP53/1900	DP53/0800
SOFR SCOTT A BELKNAP O-116		08/19			1	DP53/1900	DP53/0800
FEMP CHUCK COLEMAN O-344		08/25			1	DP53/1900	DP53/0800
FEMT DONOVAN KIEL O-403		08/25			1	DP53/1900	DP53/0800
6. Control Operations/Work Assignments:							
Patrol and mop-up to secure the fire perimeter on the 01S07 Road and the connecting dozer line from DP53 to H-1 to contain fire to the west. Prep the 1S07 Road from the Division AA/CC break to the Division CC/JJ break for future firing operations. Be prepared to fire dozer line between H-1 and DP68 if necessary.							
7. Special Instructions:							
Use caution around snags and flag as needed for safety. Identify snags to be fallen with appropriate tape. Use caution while driving on all roads due to narrowing and other roadway hazards **DO NOT OPEN RECREATIONAL GATES ON FOREST* Backhaul excess equipment and trash. Verify status of all accountable property. GPS location when moved or placed and report coordinates to supply .Utilize spill kits under Mark III pumps.							
8. Division/Group Communication Summary							
Function	Channel	RX Frequency N/W	RX Tone/NAC	TX Frequency N/W	TX Tone/NAC	Mode	
COMMAND	1	168.1000	123.0	170.4500	123.0	A	
TACTICAL	6	166.7250	123.0	166.7250	123.0	A	
AIR TO GROUND CMD	14	169.1500	0.0	169.1500	0.0	A	
9. Prepared By (Resource/Unit Leader)			Approved By (Planning Section Chief)		Date	Time	
					08/14/2015	1100	

Division/Group Assignment List (ICS 204 WF)

1. Incident Name:			3.			
MAD_RIVER_COMPLEX			Branch:		Division/Group:	
2. Operational Period: NIGHT			CONTINGENCY			
Date/Time From: 08/14/2015 1800 FRI		Date/Time To: 08/15/2015 0900 SAT				
4. Operations Personnel						
OPERATIONS CHIEF		LESLIE CURTIS		DIVISION/GROUP SUPERVISOR		
AIR ATTACK SUPERVISOR						
5. Resources Assigned this Period						
Strike Team / Task Force / Resource Designator		LWD	Leader	Number Persons	Drop Off PT./Time	Pick Up PT./Time
DOZ2 DOZER-T2-JW MORRISON 1 24HR E-208		08/20	MATTHEW MORRISON	2	CROOKS RIDGE SWAYBACK RIDGE/1900	CROOKS RIDGE/SWAYBACK RIDGE/0800
DOZ2 DOZER-T2-JW MORRISON 24HR E-209		08/20	JOHN MORRISON	2	CROOKS RIDGE SWAYBACK RIDGE/1900	CROOKS RIDGE/SWAYBACK RIDGE/0800
DOZ2 DOZER-T2-NORTHSTATE EQUIP 24HR E-210		08/21	MAURICE RHOADES	2	CROOKS RIDGE SWAYBACK RIDGE/1900	CROOKS RIDGE/SWAYBACK RIDGE/0800
DOZ2 DOZER-T2-NORTHSTATE EQUIP 24HR E-211		08/22	SCOTT HARVEY	2	CROOKS RIDGE SWAYBACK RIDGE/1900	CROOKS RIDGE/SWAYBACK RIDGE/0800
DOZ2 DOZER-T2-BUCK TRUCKING 24HR E-212		08/20	DON ANDREWS	2	CROOKS RIDGE SWAYBACK RIDGE/1900	CROOKS RIDGE/SWAYBACK RIDGE/0800
DOZ2 DOZER-T2-WURLITZER 24HR E-213		08/21	JOSHUA ROGERS	3	CROOKS RIDGE SWAYBACK RIDGE/1900	CROOKS RIDGE/SWAYBACK RIDGE/0800
6. Control Operations/Work Assignments:						
Be prepared to construct contingency dozer line directed by DIVS assigned to area. Contact Night OPS Les Curtis for assignment of dozers.						
7. Special Instructions:						
Use caution around snags and flag as needed for safety. Identify snags to be fallen with appropriate tape. Use caution while driving on all roads due to narrowing and other roadway hazards. Use caution while driving on Highway 36. **DO NOT OPEN RECREATIONAL GATES ON FOREST** Operators change at 0600/1800 daily.						
8. Division/Group Communication Summary						
Function	Channel	RX Frequency N/W	RX Tone/NAC	TX Frequency N/W	TX Tone/NAC	Mode
COMMAND	1	168.1000	123.0	170.4500	123.0	A
TACTICAL	6	166.7250	123.0	166.7250	123.0	A
AIR TO GROUND CMD	14	169.1500	0.0	169.1500	0.0	A
9. Prepared By (Resource Unit Leader)			Approved By (Planning Section Chief)		Date	Time
<i>Gary Thompson</i>			<i>J. B. ...</i>		08/14/2015	1100

SAFETY MESSAGE

Mad River Complex CA-SRF-01433

Night Shift

08/14-15/2015

1800-0900

MAJOR HAZARDS:

- Driving
- Hazard Trees
- Fatigue
- Firing Operations

Watch out Situation of the Day – 2. In country not seen in daylight.

- **Driving** – Stay alert while driving as the roads on the Six Rivers N.F. are very unforgiving. It only takes a second of distraction to lose control of our vehicle. The faster you are traveling, the faster you get in trouble. Follow posted speed limits or slower: 25 MPH through Ruth & other communities, wear your seat belt & watch for wildlife, children, and cows.
- **Fatigue** - Constantly monitor your water and electrolyte intake to avoid dehydration. Dehydration and long work hours, coupled with poor air quality and high temperatures all impact fatigue. Maintain the work to rest ratio, 2:1. If you're not getting good sleep during the day, let your Division or Safety know.
- **Hazard Trees and Snags** – Review the Hazard Tree Indicators in your IRPG on page 22 and the Hazard Controls on page 23. Establish "Decision Points" for disengagement during high wind events. Maintain situational awareness.

FIRING OPERATIONS SAFETY

- Conduct thorough briefing for all personnel involved (inside rear cover IRPG).
- All personnel to be fully qualified for their assignments. Trainees must have qualified trainers.
- Utilize Risk Mgmt. Process (IRPG p. 1) for implementing the plan.
- Required PPE to be worn by all personnel involved.

LCES must be established prior to implementing burning operations (IRPG p. 6).

L.C.E.S

- **Lookouts**- Relative humidity is down and ignition probabilities up. Check your surroundings!
- **Communications**- Know your radio frequencies, and be cognizant of any problems with direct communications.
- **Escape Routes**- Know them, discuss them, and reassess them!
- **Safety Zones**- Evaluate the "black" as your safety zone. Reassess the problems.

Safety Officers: Marty Hamel, Charlotte Jordan, Dave Morton, Dave Vitwar

Night Safety Officers: Tom Donahoe, Scott Belknap, Randy Vinson



Mad River Complex CA-SRF-1433 - August 14-15, 2015 Night Shift 1800-0900

Location	Hazard	Control or Abatement Action
All Groups	Night Operations	<ul style="list-style-type: none"> * Maintain high visibility in work area and wear vest while in roadway. * Use glow sticks to mark hazards. * Ensure personnel have a personal light (headlamp) * Watch for signs of fatigue * Take breaks away from areas of known hazard * Scout and evaluate all areas of work prior to engagement * Watchout Situation – In country not seen in daylight
Lassic & 36 Groups	Heavy Equipment Operations	<ul style="list-style-type: none"> * Ensure communications are established with operator prior to work * Maintain a 50'-100' exclusion area around equipment or 2 ½ times the canopy height * Be visible to the operator by the use of headlamp and/or glow sticks * Avoid working below equipment where rolling material could jeopardize safety * Before moving or transporting equipment identify low hanging wires, ensure there is clearance
All Groups	Hazard Trees	<ul style="list-style-type: none"> * Follow "Hazard Tree Safety" guidelines, IRPG (2014) page 22-23 * Post lookouts in mop-up areas with high concentrations of danger trees * Don't park vehicles or take breaks in areas with high concentrations of hazard trees * Establish "Decision Points" for disengagement during high wind events * Maintain situational awareness
All Groups	Driving and Traffic	<ul style="list-style-type: none"> * Practice "Defensive Driving" techniques * Honk horn to alert personnel when backing * Use spotters when backing * Always use headlights * No texting while driving * Drive at posted or slower speed limits as conditions warrant * Seat Belts are mandatory * Be on the alert for opposing traffic that may be in your lane * Watch out on narrow, winding roads that may have steep drop offs * Use chock blocks, turn wheels into hill * Watch for wildlife and livestock on all roads * Be prepared for sudden, unexpected stops
All Groups	Power Utilities and Gas Lines	<ul style="list-style-type: none"> * Notify all personnel of downed electrical lines * Be aware of utility restoration in your work area * Refer to the IRPG (2014) pg. 24-25 for Power Line Safety * Always treat downed wires as energized * Identify and avoid high-tension transmission lines * Identify and avoid high pressure natural gas lines * Identify and avoid damaged gas service near structures * Be aware of utility restoration in your work area
Lassic & 36 Groups	Potential for Spotting and Active Fire Behavior	<ul style="list-style-type: none"> * Share weather observations and IMET updates with all personnel assigned to division * Establish "Decision Points" to withdraw * Ensure LCES is in place (Lookout, Communications, Escape route and Safety Zone) * Use "Risk Management" process prior to taking action, refer to IRPG (2014) pg.1 * Review "Severe fire behavior potential" IRPG (2014) pg. 68 * Maintain adequate escape routes and safety zones; continue to re-evaluate throughout the shift * Factor in drought conditions and local ERC prior to operations * Base all actions on past, current and expected behavior of the fire
All Groups	Fireline Hazards and Mop Up	<ul style="list-style-type: none"> * Do not work directly above or below personnel during mop-up operations * Identify and make known burning stumps or roots that may cave in * Wear appropriate PPE * Watch for falling, rolling debris on steep slopes * Call out to crew personnel that may be affected by sudden rolling debris or rocks * For logs that may roll re-position perpendicular to the slope * Watch for weakened trees that may pose danger or fall * Scout areas for mop up prior to work * Maintain 8'-10' spacing when working & walking
All Groups	Fatigue, Overexertion dehydration and heat related illness	<ul style="list-style-type: none"> * Drink fluids throughout operational period (water and Gatorade) not energy drinks * Rotate crews out of smoky areas * Follow work / rest guidelines * Set a reasonable work pace and allow adequate rest breaks * Use buddy system to monitor personnel of heat related and fatigue issues * For Heat Related Injuries refer to IRPG (2014) pg.103
All Groups	Marijuana Plantations	<ul style="list-style-type: none"> * Leave area quietly in the same direction that you entered and notify DIVS * Watch for hazardous materials and be aware of possible traps in the grow area * Use extreme caution during encounters * Individuals guarding plantation may be armed * Grower may become confrontational, maintain calm demeanor and leave area
All Groups	Communication	<ul style="list-style-type: none"> * Maintain communication with aviation resources and suppression organization * Ensure all know frequency and protocol for contacting resources * Utilize the ICS 205 and 204
Lassic & 36 Group	Firing Operations & Devices	<ul style="list-style-type: none"> * Only personnel trained in the use of each device will be authorized to use firing equipment * Ensure all personnel are aware of firing operation that may affect them * Wear appropriate PPE * Ensure ground ignition plans have been adequately developed and personnel are briefed
All Groups	Environmental Hazards	<ul style="list-style-type: none"> * Be alert for rattlesnakes, watch footing and hand placement around rocks * Check yourself for ticks, watch for bees and other insects that bite or sting * Be alert for bears, cougars and other wildlife * Poisonous plants - identify plants and avoid; change , wash clothing and shower regularly
Lassic Group	Naturally Occurring Asbestos	<ul style="list-style-type: none"> * Avoid disturbing areas of Serpentine rock formations * Avoid dusty conditions to reduce exposure * Limit dust generating activities * Avoid or minimize tracking dust into vehicles

INCIDENT RADIO COMMUNICATIONS PLAN

Incident Name
Mad River Complex SRF-001433

Date/Time Prepared
8/14/15, 1100 hrs

Operational Period Date/Time
8/14-15/15, 1800-0900

Zn / Ch	Function	Channel Name/Trunked Talkgroup	Assignment	RX Freq	RX Tone/NAC	TX Freq	TX Tone/NAC	Mode A, D, M	Remarks
1	Command	CMD 1	All Divisions	168.1000	0.0	170.4500	123.0	A	Medical
2	Command	CMD 2	All Divisions	170.0125	0.0	165.2500	123.0	A	Medical
	A/G Firing	A/G Fire	All Divisions	167.8875	123.0	167.8875	123.0	A	Aerial Ignition
4	Tactical	TAC 4	36 Group	166.5500	123.0	166.5500	123.0	A	
5	Tactical	TAC 5	Ruth Group	168.6000	123.0	168.6000	123.0	A	
6	Tactical	TAC 6	Contingency/Lassic GRP	166.7250	123.0	166.7250	123.0	A	
7	Tactical	TAC 7	unassigned	166.7750	123.0	166.7750	123.0	A	
8	Tactical	TAC 8	unassigned	168.2500	123.0	168.2500	123.0	A	
9	Tactical	TAC 9	unassigned	159.4725	123.0	159.4725	123.0	A	
10	Tactical	TAC 10	unassigned	154.2875	123.0	154.2875	123.0	A	
11	Tactical	TAC 11	unassigned	154.3025	123.0	154.3025	123.0	A	
12	Dispatch	SRF-2 FN	IA & Emergency Backup	168.7250	0.0	170.1250	103.5	A	Tone 8: Local Dispatch - IA and emergency backup
13	Tactical	CALCORD	Medical	156.0750	156.7	156.0750	156.7	A	Life Flight, etc.
14	Air - Ground CMD	A-G 1	All Divisions	169.1500	0.0	169.1500	0.0	A	
15	Air - Ground TAC	N/A	N/A		0.0		0.0	A	
16	Emergency only	GUARD	All Divisions	168.6250	0.0	168.6250	110.9	A	AIR GUARD - emerg. use only -Tone 1
17									
18									
19									
20	Emergency only	GUARD	All Divisions	168.6250	0.0	168.6250	110.9	A	AIR GUARD - emerg. use only -Tone 1

Prepared By (Communications Unit Leader)
Ronald Lopez

Ron Regan COM1 707 574 6058

Incident Location
County Trinity Latitude, Longitude N 40 12.334, W 123 17.844

Deviation is assumed to be narrow band unless otherwise noted in the remarks. Mode refers to either "A" (analog), "D" (digital) or "M" (mixed mode). **1/14/14 v.5**

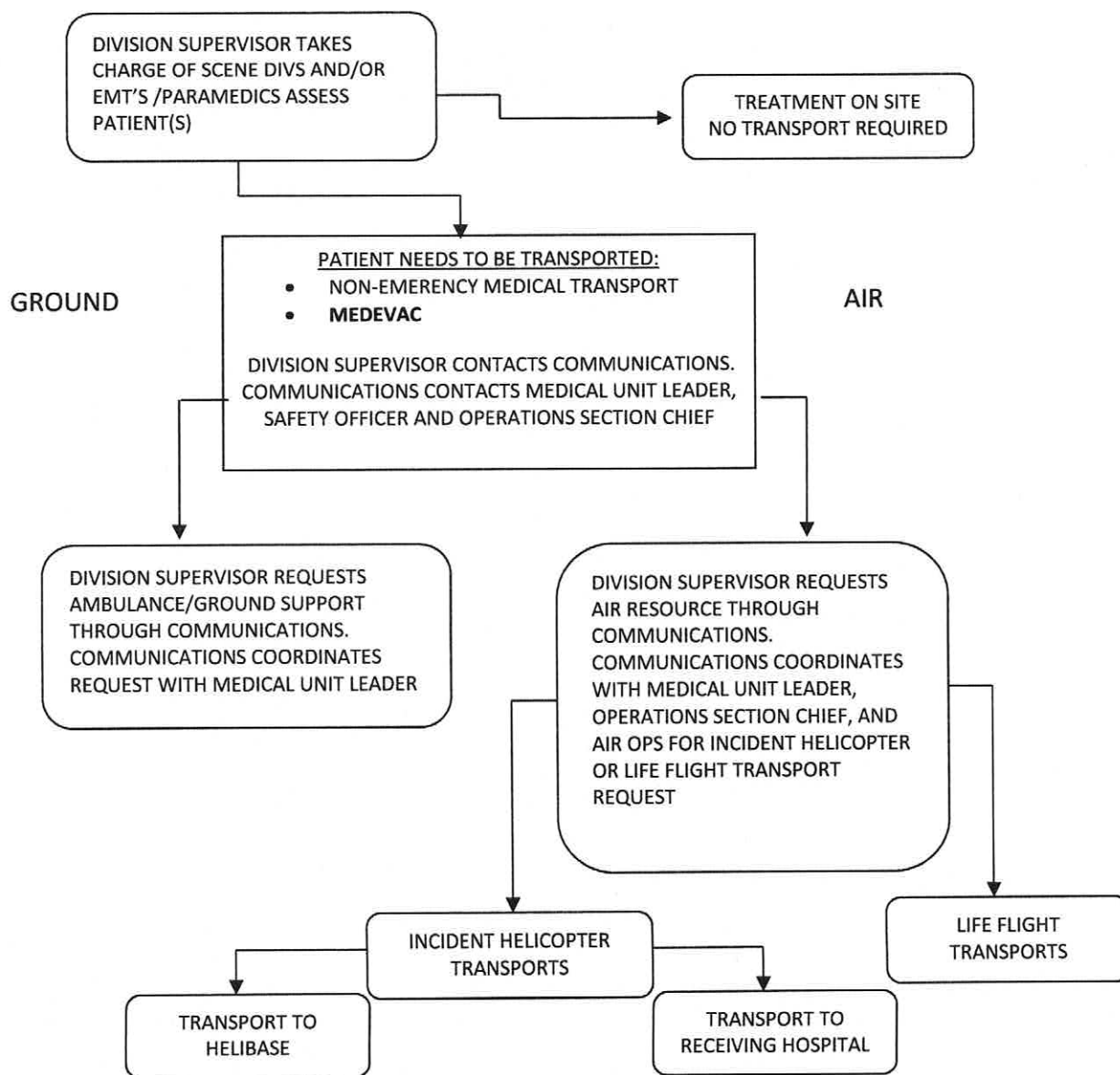
1. Incident/Project Name		2. Operational Period				
Mad River Complex		Date/Time 08/14-15/2015 1800-0900				
2. Aid Station						
Name	Complete Address	Phone	Advanced Life Support (ALS) Yes No			
Frontline Medical	Mad River ICP Flying AA Ranch Ruth Lake, CA	530-927-8133	XX			
3. Ambulance Services						
Name	Complete Address	Phone	Advanced Life Support (ALS) Yes No			
Ukiah Medic 9115	DP 19-DAY/Forest Glen Spike-NIGHT	707-513-0004	XX			
Ukiah Medic 9150	0106 Rd x Lower Mad River Rd DAY/ Mad River Complex ICP NIGHT	707-574-6853	XX			
Trinity County Life Support Medic 305	DP 53-DAY/Crook Creek Spike- NIGHT	530-623-2500	XX			
Southern Trinity Area Rescue	153 A Van Duzen Rd. Mad River, CA	707-574-6421			XX	
4. Air Ambulance Services						
Name	Phone	Type of Aircraft & Capability				
CAL FIRE H102 Day Hoist	707-726-1268	B205A++ Hoist				
CHP H14/H16 Day Hoist	530-242-3210	A Star B3 Hoist				
CA ANG Guard 825 North Ops Hoist/Extraction Helo	530-243-1434	H60 (Blackhawk) NVG/Hoist				
PHI Med 43/REACH	800-597-9571	EC 135 IFR/NVG B407 NVG				
5. Hospitals						
Name Complete Address	GPS Datum – NAD 83 Coordinate Standard Degrees Decimal Minutes DD° MM.MMM' N - Lat DD° MM.MMM' W - Long	Travel Time Air Gnd	Phone	Helipad Yes No	Level of Care Facility	
St Joseph Hospital 2700 Dolbeer St Eureka, CA 95501	Lat: N 40 47.02	20 Min	2.5 HRS	707-269-4250 707-442-8646	X	Level II Trauma Center
	Long: W 124 23.67					
	VHF:					
Shasta Regional Medical Center 110 Butte St. Redding, CA 9600	Lat: N 40 35.18	30 Min	3 HRS	530-244-5353 530-243-4042	X	
	Long: W122 23.13					
	VHF:					
Redwood Memorial Hospital 3300 Renner Dr. Fortuna, CA 95540	Lat:	2.5 HRS		707-725-3361	□	X
	Long:					
	VHF:					
Mercy Medical Center 2175 Rosaline Redding, CA 96001	Lat: N 40 34.29	30 Min	3 HRS	530-225-7201 530-242-4401	X	Level II Trauma Center
	Long: W 122 23.67					
	VHF:					
UC Davis Medical Center 2315 Stockton Blvd Sacramento, CA 95817	Lat: N 38 33.17	1.5 HRS	5 HRS	916-734-3790 916-734-5669	X	Level I Trauma Center Burn Center
	Long: W 121 27.05					
	VHF:					
6. Prepared By (Medical Unit Leader)						
7. Date/Time		8. Reviewed By (Safety Officer)		9. Date/Time		
Robert Russell MEDL		Marty Hamel SOF1		08/14/2015 1100		

Initiate care with available resources at scene and notify DIVS when an injury occurs.

The DIVS, or designee, shall coordinate the incident and direct necessary actions. Take the following actions:

1. Determine the nature of the emergency.
2. If the emergency is a medical injury/illness, determine if the injury/illness is life threatening.
3. If the injury is life threatening, then clear designated frequency for emergency traffic.
4. Identify the on-scene point of contact by position.
5. Contact the Medical Unit Leader immediately.
6. Identify number injured, patient assessment(s) and location (geographic and/or GPS coordinates).
7. Identify on-scene medical personnel by position and last name (i.e. EMT Jones).
8. Identify preferred method of patient transport.
9. Determine any additional resources or equipment needed.

Continually evaluate the Evacuation Plan, develop contingencies in the event the first plan is not effective.



Medical Incident Report					
FOR ALL MEDICAL EMERGENCIES: IDENTIFY ON SCENE INCIDENT COMMANDER BY NAME AND POSITION AND ANNOUNCE "MEDICAL EMERGENCY" TO INITIATE RESPONSE FROM IMT COMMUNICATIONS/DISPATCH.					
Use items one through nine to communicate situation to communications/dispatch.					
1. CONTACT COMMUNICATIONS/DISPATCH <i>Ex: "Communications, Div. Alpha. Stand-by for Priority Medical Incident Report." (If life threatening request designated frequency be cleared for emergency traffic.)</i>					
2. INCIDENT STATUS: <i>Provide incident summary and command structure.</i>					
Nature of Injury/Illness			<i>Describe the injury (Ex: Broken leg with bleeding)</i>		
Incident Name			<i>Geographic Name + "Medical" (Ex: Trout Meadow Medical)</i>		
Incident Commander			<i>Name of IC</i>		
Patient Care			<i>Name of Care Provider (Ex: EMT Smith)</i>		
3. INITIAL PATIENT ASSESSMENT: <i>Complete this section for each patient. This is only a brief, initial assessment. Provide additional patient info after completing this 9 Line Report.</i>					
Number of Patients:	Male / Female	Age:	Weight:		
Conscious? <input type="checkbox"/> YES <input type="checkbox"/> NO = MEDEVAC! Breathing? <input type="checkbox"/> YES <input type="checkbox"/> NO = MEDEVAC!					
Mechanism of Injury: <i>What caused the injury?</i> Lat/Long (Datum WGS84) Ex: N 40° 42.45' x W 123° 03.24'					
4. SEVERITY OF EMERGENCY, TRANSPORT PRIORITY					
SEVERITY			TRANSPORT PRIORITY		
<input type="checkbox"/> URGENT-RED Life threatening injury or illness. <i>Ex: Unconscious, difficulty breathing, bleeding severely, 2° – 3° burns more than 4 palm sizes, heat stroke, disoriented.</i>			Ambulance or MEDEVAC helicopter. Evacuation need is IMMEDIATE.		
<input type="checkbox"/> PRIORITY-YELLOW Serious Injury or illness. <i>Ex: Significant trauma, not able to walk, 2° – 3° burns not more than 1-2 palm sizes.</i>			Ambulance or consider air transport if at remote location. Evacuation may be DELAYED.		
<input type="checkbox"/> ROUTINE-GREEN Not a life threatening injury or illness. <i>Ex: Sprains, strains, minor heat-related illness.</i>			Non-Emergency. Evacuation considered Routine of Convenience.		
5. TRANSPORT PLAN:					
Air Transport: (Agency Aircraft Preferred)					
<input type="checkbox"/> Helispot		<input type="checkbox"/> Short-haul/Hoist		<input type="checkbox"/> Life Flight	
				<input type="checkbox"/> Other	
Ground Transport: <i>Click here to enter text.</i>					
<input type="checkbox"/> Self-Extract		<input type="checkbox"/> Carry-Out		<input type="checkbox"/> Ambulance	
				<input type="checkbox"/> Other	
6. ADDITIONAL RESOURCE/EQUIPMENT NEEDS:					
<input type="checkbox"/> Paramedic/EMT(s)		<input type="checkbox"/> Crew(s)		<input type="checkbox"/> SKED/Backboard/C-Collar	
<input type="checkbox"/> Burn Sheet(s)		<input type="checkbox"/> Oxygen		<input type="checkbox"/> Trauma Bag	
<input type="checkbox"/> Medication(s)		<input type="checkbox"/> IV/Fluid(s)		<input type="checkbox"/> Cardiac Monitor/AED	
<input type="checkbox"/> Other (i.e. splints, rope rescue, wheeled litter)					
7. COMMUNICATIONS:					
Function	Channel Name/Number	Receive (Rx)	Tone/NAC *	Transmit (Tx)	Tone/NAC *
<i>Ex: Command</i>	<i>Forest Rpt, Ch. 2</i>	<i>168.3250</i>	<i>110.9</i>	<i>171.4325</i>	<i>110.9</i>
COMMAND					
AIR-TO-GRND					
TACTICAL					
*(NAC for digital radio system)					
8. EVACUATION LOCATION:					
Lat/Long (Datum WGS84) EX: N 40 42.45' x W 123 03.24'					
Patient's ETA to Evacuation Location:					
Helispot/Extraction Size and Hazards:					
9. CONTINGENCY:					
<i>Considerations: If primary options fail, what actions can be implemented in conjunction with primary evacuation method? Be thinking ahead...</i>				REMEMBER: Confirm ETA's of resources ordered Act according to your level of training Be Alert. Keep Calm. Think Clearly. Act Decisively.	

Division - As Assigned	Area Location Capability	
All Branches, All Divisions	EMS Responders & Capability: REM 1	Rapid Extraction Module
	Equipment Available on Scene:	ALS/BLS supplies, Stokes, Wheeled Litter, Raising/Lowering System, etc.
	Medical Emergency Channel:	Command: CMD 1 168.1000 rx 170.4500 tx Tone 123.0 tx/rx CMD 2 172.7000 rx 163.7625 tx Tone 123.0 tx/rx Tactical: As Assigned CALCORD 156.0750 Tone 156.7

Mad River Rapid Extrication Module, call sign **“REM 1”**

The Rapid Extraction Module is comprised of Urban Search and Rescue (USAR) rope rescue technicians certified in high and low angle rescue. Some of the module capabilities include:

- Advanced Life Support (ALS) and Basic Life Support (BLS) providers and supplies
- Patient packaging for air or ground transport
- Backboards and patient stabilization equipment
- Stokes basket
- Wheeled litter for remote ground based extraction
- Over the side rescue and extraction
- Limited vehicle extrication
- Generator and lighting for nighttime operation

The REM Team is a shared resource across all branches and divisions on the Mad River Complex. Branch Directors will determine REM staging location(s) based on potential exposure and operational objectives with the concurrence of Operations. The REM team will be monitoring command for emergency deployment and a tactical frequency may be assigned as needed. Contact communications for nighttime mobilization of this resource.

Tony Garcia	FEMP/THSP	Module Leader
Chris Gibbony	FEMP/THSP	Rigger
Charles Brown	FEMP/RS1-RS2	Rescuer
Ron Sandler	EMTP	Rescuer/HECM

Medical Incident Report

Timely and accurate reporting is the key to getting needed resources to a medical incident. Review the Medical Incident Reporting Procedures on p 107-109 of the 2014 IRPG. In addition, the attached QR links to the 6 Minutes for Safety on the Medical Incident report. Please take a moment to review this important information with your crew.



COME TO FINANCE

C-25 Iron Mountain

C-61 Diamond Mtn.

E-196 Walter Moody

E-208 JW Morrison

E-315 Aries Fire Service

E-227 Dillion Construction

E- 361 Kevin Trapp

O-280 Randy Shavlis

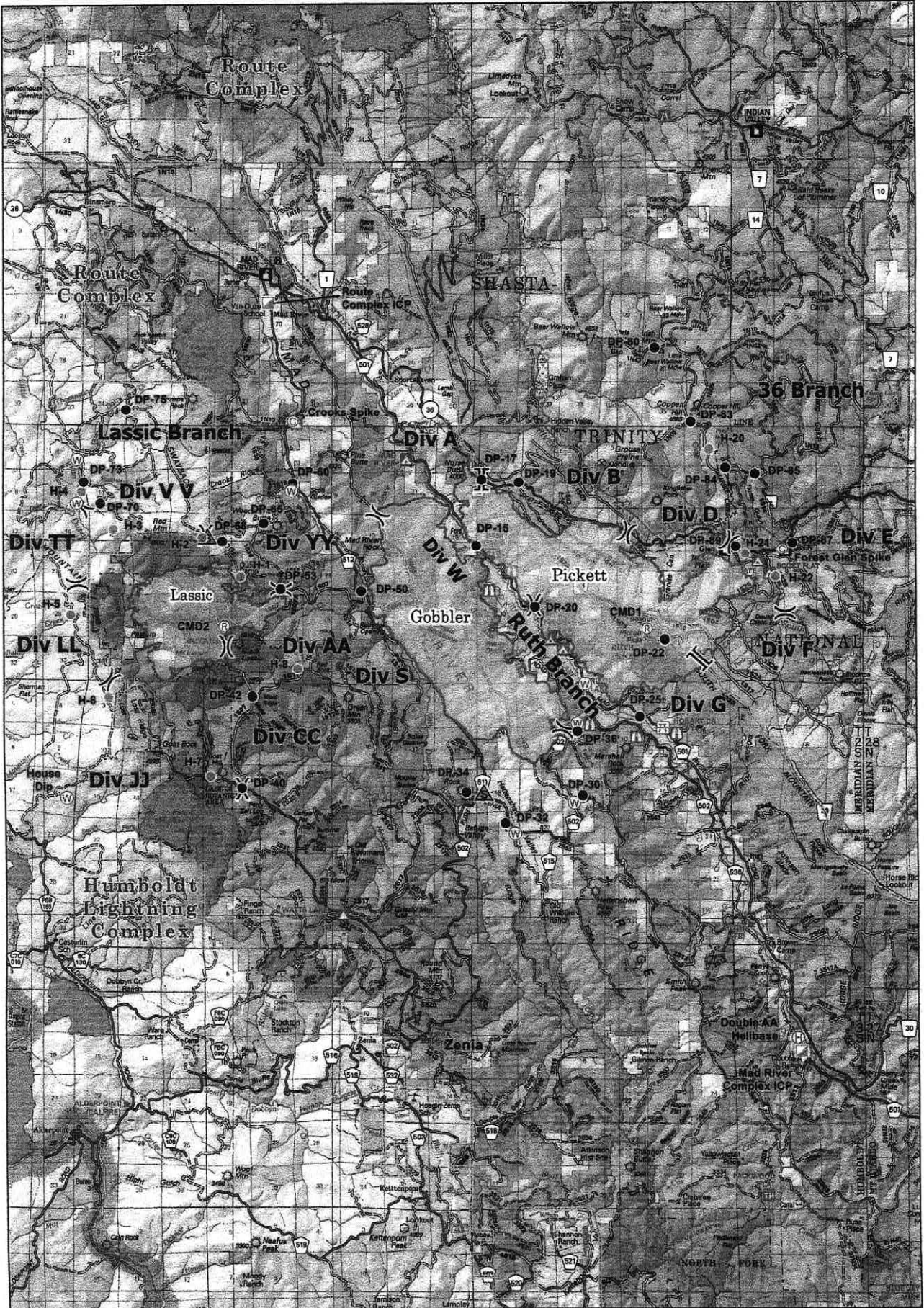
O-275 Robert Harvey

O-170 Daniel Prazak

O-171 Mark Ragan

O- 11 Kevin Sherretz

O- 295 Troy Maguire



0 1 2 Miles
NAD 83, UTM Zone 10 N
Map Date: 8/13/2015; 2255 hrs.



- Division
- Branch
- Helispot
- Safety Zone
- Drop Point
- Water Source
- Repeater
- Camp
- Helibase
- ICP

- Six Rivers/Shasta Trinity NF Administrative Boundaries
- Other Fire

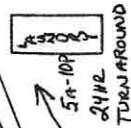
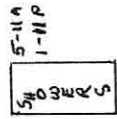


FLYING DOUBLE A RANCH

(H) MAD RIVER HELIBASE NO ACCESS

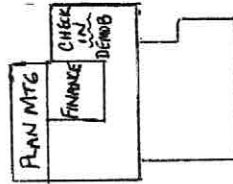


VEHICLE PARKING



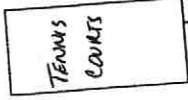
OVER HEAD SLEEPING

CREW SLEEPING



OVER HEAD PARKING

BUNK HOUSE



BRIEFING AREA



NO PARKING

PARKING

PARKING

GROUND SUPPORT

SUPPLY

HELICOPTER ACCESS ONLY

FUEL

MAD RIVER COMPLEX
FACILITIES MAP
NOT TO SCALE
8/9/15 1600HR
TB

Current as of 11-Aug-15**Mad River Complex Phone List**

First	Last	Number	FAX
Mad River Complex Hard Lines			
Communications		707- 574-6058	
Finance		707- 574-6246	574-6250
Check in / Demob		707- 574-6240	574-6242
Plans		707- 574-6230	
Medic		707- 574-6056	
Ordering		707- 574-6263/6191	574-6306
Logistics		707- 574-6063	
Info		707- 574-6289	
IC		707- 574-6094	
Air Ops		707- 574-6292	

Incident Issued Cell Phones

Tim	Baal	925-872-8547	PSC1
John	Badaracco	925-817-9943	GSUL
Lori	Bailey	925-407-7832	Transportation
Jacque	Beidl	925-407-6366	READ
Lewis	Brostrom	925-407-6360	FACL
Marie	Butler	925-588-6854	ORDM
Tom	Donohoe	925-588-6741	SOFR
Greg	Ely	925-872-8578	COML
Teresa	Fork	925-588-6109	Finance
Wally	Grogan	925-872-8559	Facilities UL
Scott	Hagerty	925-588-6845	Mad River
Christian	Johnson	925-407-5130	Chico CA
James	Jones	925-519-6314	BCMG
Steve	Kliet	925-817-9856	PIO Info
Jonathon	Lee	925-872-8557	Div S
Rick	Leuck	925-407-6361	PSC
Steve	Paes	925-872-8562	FBAN
Mark	Savage	925-872-8556	CIIMT5 Info
Carl	Schwope	925-588-6818	
Carl	Schwope	925-588-6818	Mad River
Tracy	Stelman	925-324-9456	Logistics
Larry	Stephens	925-407-7004	EQPM
Bob	Summerfield	925-872-8568	P101
Steve	Watkins	925-407-6352	Ful

