

MAD RIVER COMPLEX

CA-SRF-001433

P5J0JC (0510)



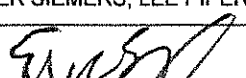
Saturday August 15, 2015

DAY Operational Period

0600 - 2100

INCIDENT OBJECTIVES	1. Incident Name Mad River Complex	2. Date 8/14/15	3. Time 1700
4. Operational Period DAY 08/15/15 0600 – 2100			
5. General Control Objectives for the Incident (include alternatives) Strategic Framework Suppress fires within the complex by implementing necessary tactics at the identified, preferred perimeter locations. Ensure resource commitment is commensurate with values at risk. Base activities on current situation, considering: fire potential, time of season, and commitment of resources both locally and nationally. Leaders Intent Provide the highest level of customer services to all involved with or impacted by the Mad River Complex. All incident assigned personnel should be prepared to take the appropriate actions regarding: <ul style="list-style-type: none"> • Monitor your fatigue and manage it appropriately. • Be “service oriented” and professional in all interactions, both internal and external to the incident. • Place personal safety and that of others as the highest priority. • Make risk informed decisions by understanding values to be protected. • Respond appropriately to incidents within the complex. Objectives <ul style="list-style-type: none"> • Provide for Firefighter and Public safety through hazard recognition and application of the risk management process. • Reduce the threat to private property, residences and infrastructure by suppressing the fire within the planned perimeter. • Protect natural resources by managing for fire effects during ignition operations. • Engage in fire suppression operations that are cost effective, but commensurate with values at risk. • Protect wilderness values and botanical resources by ensuring Minimum Impact Suppression Tactics (MIST) are applied. 			
6. Weather Forecast for Period WEATHER FORECAST FOR SATURDAY: <ul style="list-style-type: none"> • WEATHER: Few morning clouds, becoming mostly sunny. • TEMPERATURES: Max Lower Elevations...85-90 F; Ridges...75-80 F. 24 HR Trend (little warmer) • HUMIDITY: Min Lower Elevation....20-25%; Ridges....25-30%. 24 HR Trend (little drier) • 20-FOOT WIND: <ul style="list-style-type: none"> ○ SLOPE/VALLEY - Variable less than 4 mph becoming Upcanyon / Upslope 5 to 10 mph in afternoon. ○ RIDGETOP - North 2 to 4 mph...becoming Northeast 5 to 10 mph in locations that align with the drainages. • INVERSIONS/ STABILITY: Inversion lifting after 1100 am. 			
7. General Safety Message <ul style="list-style-type: none"> • Hazardous driving – Follow posted speed limits or slower: 25 MPH through Ruth & other communities • Watch out Situation of the Day – 2. In country not seen in daylight. • LCES must be established prior to implementing burning operations (IRPG p. 6). 			
8. Attachments (mark if attached)			
<input checked="" type="checkbox"/> Organization List - ICS 203	<input checked="" type="checkbox"/> Medical Plan - ICS 206	<input checked="" type="checkbox"/> Safety Message	
<input checked="" type="checkbox"/> Div. Assignment Lists - ICS 204	<input checked="" type="checkbox"/> Incident Map	<input checked="" type="checkbox"/> Air Ops Summary ICS 220	
<input checked="" type="checkbox"/> Communications Plan - ICS 205	<input checked="" type="checkbox"/> Fire Weather Forecast	<input checked="" type="checkbox"/> Base Camp Map	
<input checked="" type="checkbox"/> READ Message	<input checked="" type="checkbox"/> ICS 214	<input checked="" type="checkbox"/> Fire Behavior	
9. Prepared by (Planning Section Chief) Tim Baal/ Dennis Cooper/ Rick Leuck (T)		10. Approved by (Incident Commander) Mike Minton	

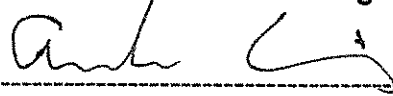
ORGANIZATION ASSIGNMENT LIST (ICS-203)

1. Incident Name: MAD RIVER COMPLEX		2. Operational Period: DAY		Date From: 8/15/2015 Time From: 0600		Date To: 8/15/2015 Time To: 2100	
3. Incident Commander(s) and Command Staff:				7. Operations Section:			
Incident Commander	MIKE MINTON			Operations Chief	SAM MAROUK		
Deputy IC	CARLTON JOSEPH			Planning Ops	DON SMITH/ DONOVAN LEE (T)		
Safety Officer	MARTY HAMEL / DAVE MORTON CHARLOTTE JORDAN (T)			36 Branch			
Public Information Officer	STEVE KLIEST / MARK SAVAGE			Branch Director	CRAIG WARREN		
Liaison Officer	RICK ALPERT / FRED FLORES			Division/Group	B	RON SMITH	
				Division/Group	D	DEIRDRE CHERRY / ROBERT RICE (T)	
				Division/Group	E	FRED BURRIS	
				Division/Group	F	JEB PRONTO / JASON AMIS (T)	
4. Agency/Organization Representatives:				Division/Group	FOREST GLEN S.P.G.	JON LEE	
SIX RIVERS NF	DAN DILL						
SHF AA REP	SARAH TOMSKY			Branch Director	KELLY MARTIN		
CHP	TAMI McCANLESS			Division/Group	A / G / W / S		
SOUTH TRINITY VFD	DON STEWART / BILL GERMAN			Division/Group			
TRINITY SO	JAKE HESS			Division/Group			
OES	DAVE STONE / ISH MESSER			LASSIC Branch			
5. Planning Section:				Branch Director	MARK JAMIESON		
Chief	TIM BAAL / RICK LEUCK (T)			Division/Group	A A / Y Y	KIM OLSON	
Deputy	DENNIS COOPER			Division/Group	C C	JIM SNOW / TONY THALER (T)	
Resources Unit	ASHBY / THOMPSON / MATYE			Division/Group	J J	UNSTAFFED	
Situation Unit	MIKE MC HARGUE / TAD MORELOCK BEAU BURLEY (T) / BOB ROGERS (T)			Division/Group	L L / T T	MATT CHAMPA / ERIC NOLAN / SEAN WHALEN (T)	
Demobilization Unit	JIM COOLEY			Division/Group	V V	CALEB FINCH / HAROLD KIBBE	
Documentation Unit	PHIL SETTLES			Division/Group	LASSIC SPG	ANDREW LANG / BRANDYDYN HARVEY (T)	
Fire Behavior Analyst	STEVE PAES			Division/Group			
GISS	EVAN CONKLIN / JASON DUKE (T) / MELISSA VARGAS (T)			Division/Group			
Training Specialist	ALLISON JACKSON			Contingency Group			
IMET	AMANDA GRANING			Branch Director			
READ	SCOTT HAGERTY / RAYMA COOLEY			Division/Group	BOB HARVEY		
6. Logistics Section:							
Chief	TONY MARTINEZ / JIM ECKROTH (T) / TERESA STELMAN (T)						
Deputy				Air Operations Branch			
Support Branch				Air Ops Branch Dir.		JOHN KEESEE	
Supply Unit	MIKE BRADFORD			Air Support Grp Supervisor		CRAIG DADO	
Ordering Unit	MARIE BUTLER / KATHY HAYDEN			Air tactical Group Supervisor		MIKE STOUT	
Facilities Unit	WALLY GROGAN			8. Finance/Administration Section:			
Ground Support Unit	JOHN BADARACCO / FRED SIMONDS			Chief	TERESA FORK		
Service Branch				Time Unit	JANICE BROWN		
Communications Unit	RON REGAN			Procurement Unit	CHRISTOPHER FORD		
Medical Unit	ROBERT RUSSELL			Comp/Claims Unit	ANNMARIE CARLSON / PAMELA BEAUJON (T)		
Food Unit	EDWIN MAYBERRY / DALE THOMPSON / WHITNEY VONADA (T)			Cost Unit	ROGER SIEMERS; LEE PIPER (T)		
9. Date/Time Prepared: 8/14/15 1700		Prepared By: ERIC MATYE, RESL			Signature: 		

Fire Weather Forecast

FORECAST NO: 22
PREDICTION FOR: DAY SHIFT
SHIFT DATE: Aug 15, 2015
TIME AND DATE
FORECAST ISSUED: Aug 14, 2015 2000 PDT

NAME OF FIRE: Mad River Complex
UNIT: Six Rivers NF
SIGNED: Amanda Graning
Incident Meteorologist



WEATHER DISCUSSION: High pressure will build over California and nose into the Mad River Complex through the weekend. This air mass will bring a warming and drying trend with critically low afternoon humidity. Expect a much lower RH recovery Saturday night with hot and dry conditions all day Sunday. Smoke will settle in the river valleys and canyons overnight. Visibility may drop to near zero at times.

WEATHER FORECAST FOR SATURDAY:

WEATHER: Few morning clouds, becoming mostly sunny.

TEMPERATURES: Max Lower Elevations...85-90 F; Ridges....75-80 F. **24 HR Trend**
(little warmer)

HUMIDITY: Min Lower Elevation....20-25%; Ridges....25-30%. **24 HR Trend**
(little drier)

20-FOOT WIND:

SLOPE/VALLEY - Variable less than 4 mph becoming Upcanyon / Upslope 5 to 10 mph in afternoon.

RIDGETOP - North 2 to 4 mph...becoming Northeast 5 to 10 mph in locations that align with the drainages.

INVERSIONS/STABILITY: Inversion lifting after 1100 am.

WEATHER FORECAST FOR SATURDAY NIGHT:

WEATHER: Mostly Clear.

TEMPERATURES: Min Valley bottom...50-55-F; Ridges...57-62

HUMIDITY: Max Valley bottom...70-80%; Ridges...50s%. Falling into 30s% by 0600

20-FOOT WIND:

SLOPE/VALLEY - Upslope 2 to 4 mph...becoming downcanyon/downslope less than 4 mph after 2200.

RIDGETOP - North 5 to 10 mph.

INVERSIONS/STABILITY: Smoke settling in canyons after 2300.

EXTENDED FORECAST:

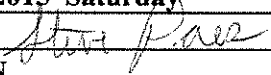
SUNDAY... Mostly Sunny. Hot and Dry. Max temps...90s Valley and 80s ridges. Min temps 55-65 F. Min RH 15-20%.

REALTIME RAWS INFO for MAD RIVER COMPLEX

Div A - MAD RIVER
36 Branch (higher elev) - FRIEND MOUNTAIN
Div G - RUTH
Div D/F - IRAWS 27 (FOREST GLEN)
Frequency 163.350, DTMF Code 0027
Lassic Branch IRAWS 33 (SWAYBACK)
Frequency 163.350, DTMF Code 0033



FIRE BEHAVIOR FORECAST

FORECAST NUMBER: 25	TYPE OF FIRE: Wildland Fire
FIRE NAME: Mad River Complex	OPERATIONAL PERIOD: Day
DATE / TIME ISSUED: Aug 14, 2015 2000	DATE: Aug 15, 2015 Saturday
UNIT: Six Rivers NF / Mad River	SIGNED:  Steve Paes FBAN

INPUTS

WEATHER SUMMARY:

Partly cloudy early becoming mostly sunny.
Max. Temperatures: 85-90 valleys, 75-80 ridges.
Min. Relative Humidity: 20-25% valleys, 25-30% ridges.
Wind: Slope/Valley- light and variable in the morning, becoming upcanyon/upslope 5-9mph.
Ridgetop Winds- North 2-4 mph becoming Northeast 5-10 mph with gusts to 15 mph in drainages that align with winds.

GENERAL:

- The primary carrier of surface fire is heavy forest litter with a shrub or small tree understory.
- Fire spread will be primarily topography driven. Expect the predominant fire spread to be backing downhill. Roll out on steep slopes can contribute to rates of spread. Expect up to 10-20 chains of downhill progression during the shift.
- Head fire on steep slopes can transition to crown fire, especially on slopes that align with general winds.
- Anticipate torching in the afternoon.
- Smoke or clouds over the fire has had a dampening effect on fire behavior. **Smoke lifting will be an indicator that fire behavior will increase.**

Rates of spread: Timber-head fire = 3-12ch/hr (depending on slope), backing fire= 1-3 ch/hr.

Grass- head fire 20 ch/hr, backing fire 2ch/hr

Flame lengths: Timber-head fire= 8ft., backing fire= 2ft.

Grass- head fire 4ft., backing fire 1ft.

Probability of Ignition (PIG) = 50% shaded fuel, 80% exposed fuel

Short range spotting occurs with light winds and moderate fire activity. Spotting distances of up to ½ mile can occur with crown fire.

Dead fuel moisture contents: 1hr= 4% exposed fuel 7% shaded fuel, 10hr = 6% , 100hr and 1000hr =10%

Live Fuel Moisture: Timber 150%, Shrubs 80%

ERC=50...69th percentile BI=41...48th percentile

SPECIFIC: Recent shifts have seen more torching and crown runs on steep slopes when skies were clear and humidity dropped to 20%.

-DIV B: The fire perimeter will be exposed to general winds.

-DIV D: Spotting from yesterday's fire activity could have spotted on steep slopes to once again set up an uphill run. Watch for rolling material, snags and fire weakened trees in recently burned areas. Smoke may affect Air Ops ability to support ground resources.

-DIV E/F: General winds and upvalley winds could cause spotting from fire activity in DIV D. Watch for rolling material, snags and fire weakened trees in recently burned areas. Smoke may affect Air Ops ability to support ground resources.

-DIV A/G/S/W: Clear skies and low humidity could expose hot spots for mop-up. Snags, fire weakened green trees and rolling material are as much a hazard in these areas as those with fire activity.

-Lassic Fire: The fire will be exposed to ridgetop winds. Potential for uphill fire spread exists in several places: slope reversal on Blanket Cr., spotting from the west slope of Signal Peak to the south slope, spotting downhill from DIV AA/YY control lines, and fire crossing the Little Van Duzen Rv. Some areas west of the river have shrub fuel types with high rates of spread and high flame lengths.

AIR OPERATIONS

Smoke in valleys early in the shift may prevent Air Ops from supporting ground resources.

SAFETY

Smoke may hamper visibility of Lookouts. Make sure you know what the fire is doing at all times.

Division/Group Assignment List (ICS 204 WF)

1. Incident Name:			3.			
MAD_RIVER_COMPLEX			Branch:		Division/Group:	
2. Operational Period: DAY			36		B	
Date/Time From: 08/15/2015 0600 SAT		Date/Time To: 08/15/2015 2100 SAT				
4. Operations Personnel						
OPERATIONS CHIEF		SAM MAROUK		BRANCH DIRECTOR		
				CRAIG D WARREN		
DIVISION/GROUP SUPERVISOR		RON SMITH		AIR ATTACK SUPERVISOR		
				MIKE STOUT		
5. Resources Assigned this Period						
Strike Team / Task Force / Resource Designator		LWD	Leader	Number Persons	Drop Off PT./Time	Pick Up PT./Time
HC2 CREW - T2 - NORTH PACIFIC FORESTRY C-4		08/20	SALVADOR PEREZ ARELLANO	20	DP19/0800	DP19/2000
ES1 ENGINE S/T - T1 - 2277A E-51		08/15	ROBERT FISHER	22	DP19/0800	DP19/2000
WTS2 WATER TENDER - E-367				1	DP19/0800	DP19/2000
WTS2 WATER TENDER -DARRAH LOG E-369		08/28		1	DP19/0800	DP19/2000
WTS2 WATER TENDER - WATER TRUCK ENT E- 258		08/22	RUBEN TELLECHEA	1	DP19/0800	DP19/2000
SOF2 GARY KEMP O-409		08/28		1	DP19/0800	DP19/2000
FEMP SCOTT HAMILTON O-176		08/20		1	DP19/0800	DP19/2000
FEMT TYLER T MUNTZ O-271		08/20		1	DP19/0800	DP19/2000
6. Control Operations/Work Assignments:						
Patrol dozerline from DP17 to where fires edge meets Hwy. 36. Coordinate with adjoining divisions and resources to assist as fire conditions dictate. Monitor fire activity adjacent to structure in Section 17 on Hwy. 36 to prevent reburn.						
7. Special Instructions:						
Use caution around snags and flag as needed for safety. Identify snags to be fallen with appropriate tape. Use caution while driving on all roads due to narrowing and other roadway hazards. Use caution while driving on Highway 36. **DO NOT OPEN RECREATIONAL GATES ON FOREST** Backhaul excess equipment and trash. Verify status of all accountable property. GPS location when moved or placed and report coordinates to supply. Utilize spill kits under Mark III pumps. ** Personnel assigned as Rapid Extraction Module: Call sign is "REM1". Operations and Branch will determine where module will be staged during the operational period. REM1 will monitor command for emergency deployment. See Medical Plan page 4 for further details.						
8. Division/Group Communication Summary						
Function	Channel	RX Frequency N/W	RX Tone/NAC	TX Frequency N/W	TX Tone/NAC	Mode
COMMAND	1	168.1000	123.0	170.4500	123.0	A
TACTICAL	6	166.7250	123.0	166.7250	123.0	A
AIR TO GROUND CMD	14	169.1500	0.0	169.1500	0.0	A
9. Prepared By (Resource Unit Leader)			Approved By (Planning Section Chief)		Date	Time
<i>Gary Thompson</i>			<i>Steve RC 2</i>		08/14/2015	2100

Division/Group Assignment List (ICS 204 WF)

1. Incident Name:			3.			
MAD_RIVER_COMPLEX			Branch: 36		Division/Group: D	
2. Operational Period: DAY						
Date/Time From: 08/15/2015 0600 SAT		Date/Time To: 08/15/2015 2100 SAT				
4. Operations Personnel						
OPERATIONS CHIEF		SAM MAROUK		BRANCH DIRECTOR		
				CRAIG D WARREN		
DIVISION/GROUP SUPERVISOR		DEIRDRE CHERRY ROBERT RICE (T)		AIR ATTACK SUPERVISOR		
				MIKE STOUT		
5. Resources Assigned this Period						
Strike Team / Task Force / Resource Designator		LWD	Leader	Number Persons	Drop Off PT./Time	Pick Up PT./Time
HC1 CREW - T1 - DEL ROSA IHC C-60		08/24	NEIL GAMBOA	21	DP19/0800	DP19/2000
ES6 ENGINE S/T - T6 - MAD RIVER 6 E-909				16	DP19/0800	DP19/2000
ENG6 NMS 52 E-362 E-909.3				3	DP19/0800	DP19/2000
ENG6 AES 363 E-364 E-909.4				3	DP19/0800	DP19/2000
ENG6 AES 361 E-365 E-909.5				3	DP19/0800	DP19/2000
ENG6 BLM FAD 2620 E-367 E-909.6				3	DP19/0800	DP19/2000
ENG6 CORONA BRUSH 182 E-368 E-909.7				3	DP19/0800	DP19/2000
ES6 ENGINE S/T - T6 - MAD RIVER 7 E-910				16	DP19/0800	DP19/2000
ENG6 NM BERNALILLO 62 E-359 E-910.3				3	DP19/0800	DP19/2000
ENG6 NM CAPITAN 51 E-361 E-910.4				3	DP19/0800	DP19/2000
ENG6 SONOITA 823 E-366 E-910.5		08/18	BRIAN JACKSON	3	DP19/0800	DP19/2000
ES3 ENGINE - T3 - A2S - STRIKE TEAM #2 E-76		08/19	DOUG T NIEMYSKI	17	DP19/0800	DP19/2000
WTS2 WT - T2 - DARRAH LOGGING 23 E-190		08/20	STAN CARGO	1	DP19/0800	DP19/2000
FOBS JOE BOGGS O-268		08/16		1	DP19/0800	DP19/2000
FOBS MICHAEL GERALD MUCK (T) O-97		08/18		1	DP19/0800	DP19/2000
SOF2 ANTHONY RIVERS (T) O-15		08/16		1	DP19/0800	DP19/2000
SOF2 PETER MOURTSEN O-33		08/18		1	DP19/0800	DP19/2000
FEMP EVAN MORGAN O-320		08/22		1	DP19/0800	DP19/2000
FEMT DEREK J CARTHY O-294		08/20		1	DP19/0800	DP19/2000
6. Control Operations/Work Assignments:						
8. Division/Group Communication Summary						
Function	Channel	RX Frequency N/W	RX Tone/NAC	TX Frequency N/W	TX Tone/NAC	Mode
COMMAND	1	168.1000	123.0	170.4500	123.0	A
TACTICAL	5	168.6000	123.0	168.6000	123.0	A
AIR TO GROUND CMD	14	169.1500	0.0	169.1500	0.0	A
9. Prepared By (Resource Unit Leader)		Approved By (Planning Section Chief)		Date	Time	
<i>Casey Thompson</i>		<i>Stevy PSC2</i>		08/14/2015	2100	

Division/Group Assignment List (ICS 204 WF)

1. Incident Name:				3.			
MAD_RIVER_COMPLEX				Branch: 36		Division/Group: D	
2. Operational Period: DAY							
Date/Time From: 08/15/2015 0600 SAT		Date/Time To: 08/15/2015 2100 SAT					
4. Operations Personnel							
OPERATIONS CHIEF		SAM MAROUK		BRANCH DIRECTOR		CRAIG D WARREN	
DIVISION/GROUP SUPERVISOR		DEIRDRE CHERRY ROBERT RICE (T)		AIR ATTACK SUPERVISOR		MIKE STOUT	
6. Control Operations/Work Assignments:							
Initiate firing operations along 01S06 Road from Div B/D break heading southeast and assist with aerial and ground ignition operations as needed.							
7. Special Instructions:							
Use caution around snags and flag as needed for safety. Identify snags to be fallen with appropriate tape. Use caution while driving on all roads due to narrowing and other roadway hazards. Use caution while driving on Highway 36. **DO NOT OPEN RECREATIONAL GATES ON FOREST** Backhaul excess equipment and trash. Verify status of all accountable property. GPS location when moved or placed and report coordinates to supply. Utilize spill kits under Mark III pumps. ** Personnel assigned as Rapid Extraction Module: Call sign is "REM1". Operations and Branch will determine where module will be staged during the operational period. REM1 will monitor command for emergency deployment. See Medical Plan page 4 for further details.							
8. Division/Group Communication Summary							
Function	Channel	RX Frequency N/W	RX Tone/NAC	TX Frequency N/W	TX Tone/NAC	Mode	
COMMAND	1	168.1000	123.0	170.4500	123.0	A	
TACTICAL	5	168.6000	123.0	168.6000	123.0	A	
AIR TO GROUND CMD	14	169.1500	0.0	169.1500	0.0	A	
9. Prepared By (Resource Unit Leader)			Approved By (Planning Section Chief)			Date	Time
<i>Gary Thompson</i>			<i>Stuart J PSC2</i>			08/14/2015	2100

Division/Group Assignment List (ICS 204 WF)

1. Incident Name:			3.			
MAD_RIVER_COMPLEX			Branch:		Division/Group:	
2. Operational Period: DAY			36		E	
Date/Time From: 08/15/2015 0600 SAT		Date/Time To: 08/15/2015 2100 SAT				
4. Operations Personnel						
OPERATIONS CHIEF		SAM MAROUK		BRANCH DIRECTOR		
				CRAIG WARREN		
DIVISION/GROUP SUPERVISOR		FRED BURRIS		AIR ATTACK SUPERVISOR		
				MIKE STOUT		
5. Resources Assigned this Period						
Strike Team / Task Force / Resource Designator		LWD	Leader	Number Persons	Drop Off PT./Time	Pick Up PT./Time
HC1 CREW - T1 - DIAMOND MOUNTAIN IHC C-61		08/25	DAN VARNEY	20	DP87/0800	DP87/1800
HC2 CREW - T2 - 13185E - OREGON WOODS INC C-63		08/15	SCOTT POLHAMUS	20	DP87/0800	DP87/1800
ES1 ENGINE S/T - T1 - 1810A E-54		08/17	PHILL VENERIS	20	DP87/0800	DP87/1800
ES6 ENGINE S/T - T6 - MAD RIVER 5 E-908			BARRY COOK	13	DP87/0800	DP87/1800
STEN BARRY COOK E-908.1				1	DP87/0800	DP87/1800
ENG6 ROCKY MOUNTAIN FIRE E-310 E-908.3				3	DP87/0800	DP87/1800
ENG6 BURNHAM WILDFIRE #9 E-313 E-908.4				3	DP87/0800	DP87/1800
ENG6 ARIES FIRE 12 E-315 E-908.6				3	DP87/0800	DP87/1800
ENG6 HNF 623 E-316 E-908.7				7	DP87/0800	DP87/1800
ENG6 SOUTHERN ROCKY E-360 E-908.8				3	DP87/0800	DP87/1800
WTS2 WATER TEND - T2 - DARRAH LOG INC. E-191		08/20	KEITH DARRAH	1	DP87/0800	DP87/1800
FAL1 FALM - MILLER WOOD - MWP O-301		08/22	BREWSTER TAMBLIN	2	DP87/0800	DP87/1800
FAL1 FALM - WYEAST FORESTRY MGMT - O-303		08/22	PAUL JONES	2	DP87/0800	DP87/1800
TFLD JOEL BRONK O-367		08/20		1	DP87/0800	DP87/1800
TFLD JOSH W SCHMALENBERGER (T) O-382		08/20		1	DP87/0800	DP87/1800
FOBS KAY K KUDO O-270		08/16		1	DP87/0800	DP87/1800
FOBS ASHLEIGH B D'ANTONIO (T) O-99		08/18		1	DP87/0800	DP87/1800
SOF2 PETER MOURTSEN O-33		08/18		1	DP87/0800	DP87/1800
SOF2 ANTHONY RIVERS (T) O-15		08/16		1	DP87/0800	DP87/1800
FEMP JACOB S MURRELL O-319		08/22		1	DP87/0800	DP87/1800
FEMP STEVEN WALLACE O-353		08/24		1	DP87/0800	DP87/1800
8. Division/Group Communication Summary						
Function	Channel	RX Frequency N/W	RX Tone/NAC	TX Frequency N/W	TX Tone/NAC	Mode
COMMAND	1	168.1000	123.0	170.4500	123.0	A
TACTICAL	9	159.4725	123.0	159.4725	123.0	A
AIR TO GROUND CMD	14	169.1500	0.0	169.1500	0.0	A
9. Prepared By (Resource Unit Leader)			Approved By (Planning Section Chief)		Date	Time
<i>Gary Thompson</i>			<i>Steve JSC2</i>		08/14/2015	2100

Division/Group Assignment List (ICS 204 WF)

1. Incident Name:			3.			
MAD_RIVER_COMPLEX			Branch:	Division/Group:		
2. Operational Period: DAY			36	E		
Date/Time From: 08/15/2015 0600	SAT	Date/Time To: 08/15/2015 2100				
4. Operations Personnel						
OPERATIONS CHIEF	SAM MAROUK		BRANCH DIRECTOR	CRAIG WARREN		
DIVISION/GROUP SUPERVISOR	FRED BURRIS		AIR ATTACK SUPERVISOR	MIKE STOUT		
5. Resources Assigned this Period						
Strike Team / Task Force / Resource Designator	LWD	Leader	Number Persons	Drop Off PT./Time	Pick Up PT./Time	
READ BOBBI FILBERT O-402	08/27		1	DP87/0800	DP87/1800	
6. Control Operations/Work Assignments:						
Mop-up from previous burn operations as safety permits. Seek and provide assistance to adjoining Divisions and Forest Glen SPG as needed.						
7. Special Instructions:						
<p>Use caution around snags and flag as needed for safety. Identify snags to be fallen with appropriate tape. Use caution while driving on all roads due to narrowing and other roadway hazards. Use caution while driving on Hwy. 36. **DO NOT OPEN RECREATIONAL GATES ON FOREST** Backhaul excess equipment and trash. Verify status of all accountable property. GPS location when moved or placed and report coordinates to supply. Utilize spill kits under Mark III pumps.</p> <p>** Personnel assigned as Rapid Extraction Module: Call sign is "REM1". Operations and Branch will determine where module will be staged during the operational period. REM1 will monitor command for emergency deployment. See Medical Plan page 4 for further details.</p>						
8. Division/Group Communication Summary						
Function	Channel	RX Frequency N/W	RX Tone/NAC	TX Frequency N/W	TX Tone/NAC	Mode
COMMAND	1	168.1000	123.0	170.4500	123.0	A
TACTICAL	9	159.4725	123.0	159.4725	123.0	A
AIR TO GROUND CMD	14	169.1500	0.0	169.1500	0.0	A
9. Prepared By (Resource Unit Leader)			Approved By (Planning Section Chief)		Date	Time
<i>Gary Thompson</i>			<i>[Signature]</i>		08/14/2015	2100

Division/Group Assignment List (ICS 204 WF)

1. Incident Name:			3.			
MAD_RIVER_COMPLEX			Branch:		Division/Group:	
2. Operational Period: DAY			36		F	
Date/Time From: 08/15/2015 0600 SAT	Date/Time To: 08/15/2015 2100 SAT					
4. Operations Personnel						
OPERATIONS CHIEF		SAM MAROUK		BRANCH DIRECTOR		CRAIG WARREN
DIVISION/GROUP SUPERVISOR		JEB PRONTO JASON AMIS (T)		AIR ATTACK SUPERVISOR		MIKE STOUT
5. Resources Assigned this Period						
Strike Team / Task Force / Resource Designator		LWD	Leader	Number Persons	Drop Off PT./Time	Pick Up PT./Time
HC2 CREW NO. REFORESTATION 13124 C-5		08/15	JOSE RINCON	20	DP22/0800	DP22/2000
ES3 ENGINE S/T - T3 - A3S STRIKE TEAM 1 E-75		08/19	JEFF POLACEK	20	DP22/0800	DP22/2000
WT2 - WATER TENDER - E-373					DP22/0800	DP22/2000
SKD1 SKIDDER - T1 - CRANE MILLS-0248 E-193		08/19	FRANK BARRON	2	DP22/0800	DP22/2000
FELB PHILIP J MILLETTE O-384		08/26		1	DP22/0800	DP22/2000
FALB FALM - NZ FALLERS MODULE 3 O-300		08/21	LARRY CASTRO	2	DP22/0800	DP22/2000
FAL1 FALM - AA HIGH CLIMBERS O-153		08/21	CURTIS KING	2	DP22/0800	DP22/2000
FAL1 FALM - RANDY SHAULIS O-280		08/21	RANDY SHAULIS	2	DP22/0800	DP22/2000
HEQB JASON E MURIEEN O-216		08/19		1	DP22/0800	DP22/2000
TFLD GEORGE ABBOTT O-26		08/15		1	DP22/0800	DP22/2000
SOFR JOHN MARTINEZ O-72		08/21		1	DP22/0800	DP22/2000
FEMP DANIEL J MONTOYA O-328		08/24		1	DP22/0800	DP22/2000
FEMT ADRIAN VILLARREAL O-333		08/24		1	DP22/0800	DP22/2000
READ BOBBI FILBERT O-402		08/27		1	DP22/0800	DP22/2000
6. Control Operations/Work Assignments:						
Complete line from Double Cabin Flat to the 01S23 Road. Support Division E with firing operations on the 01S23 Road as requested. Continue to improve and mop up existing line from Branch break to Div E/F break. Continue snagging line and roads.						
7. Special Instructions:						
Use caution around snags and flag as needed for safety. Identify snags to be fallen with appropriate tape. Use caution while driving on all roads due to narrowing and other roadway hazards. Use caution while driving on Highway 36. **DO NOT OPEN RECREATIONAL GATES OF THE FOREST** Backhaul excess equipment and trash. Verify status of all accountable property. GPS location when moved or placed and report coordinates to supply. Utilize spill kits under Mark III pumps.						
8. Division/Group Communication Summary						
Function	Channel	RX Frequency N/W	RX Tone/NAC	TX Frequency N/W	TX Tone/NAC	Mode
COMMAND	1	168.1000	123.0	170.4500	123.0	A
TACTICAL	7	166.7750	123.0	166.7750	123.0	A
AIR TO GROUND CMD	14	169.1500	0.0	169.1500	0.0	A
9. Prepared By (Resource Unit Leader)			Approved By (Planning Section Chief)		Date	Time
<i>Gary Thompson</i>			<i>Steve PSC2</i>		08/14/2015	2100

Division/Group Assignment List (ICS 204 WF)

1. Incident Name:				3.			
MAD_RIVER_COMPLEX				Branch:		Division/Group:	
2. Operational Period: DAY				36		F	
Date/Time From: 08/15/2015 0600 SAT		Date/Time To: 08/15/2015 2100 SAT					
4. Operations Personnel							
OPERATIONS CHIEF		SAM MAROUK		BRANCH DIRECTOR		CRAIG WARREN	
DIVISION/GROUP SUPERVISOR		JEB PRONTO JASON AMIS (T)		AIR ATTACK SUPERVISOR		MIKE STOUT	
7. Special Instructions:							
<p>** Personnel assigned as Rapid Extraction Module: Call sign is "REM1". Operations and Branch will determine where module will be staged during the operational period. REM1 will monitor command for emergency deployment. See Medical Plan page 4 for further details.</p>							
8. Division/Group Communication Summary							
Function	Channel	RX Frequency N/W	RX Tone/NAC	TX Frequency N/W	TX Tone/NAC	Mode	
COMMAND	1	168.1000	123.0	170.4500	123.0	A	
TACTICAL	7	166.7750	123.0	166.7750	123.0	A	
AIR TO GROUND CMD	14	169.1500	0.0	169.1500	0.0	A	
9. Prepared By (Resource Unit Leader)				Approved By (Planning Section Chief)		Date	Time
<i>Gary Thompson</i>				<i>[Signature]</i> RSC2		08/14/2015	2100

Division/Group Assignment List (ICS 204 WF)

1. Incident Name:			3.			
MAD_RIVER_COMPLEX			Branch:		Division/Group:	
2. Operational Period: DAY			36		FOREST GLEN S.P.G.	
Date/Time From: 08/15/2015 0600 SAT		Date/Time To: 08/15/2015 2100 SAT				
4. Operations Personnel						
OPERATIONS CHIEF		SAM MAROUK		BRANCH DIRECTOR		
				CRAIG WARREN		
DIVISION/GROUP SUPERVISOR		JON LEE		AIR ATTACK SUPERVISOR		
				MIKE STOUT		
5. Resources Assigned this Period						
Strike Team / Task Force / Resource Designator		LWD	Leader	Number Persons	Drop Off PT./Time	Pick Up PT./Time
ES1 ENGINE S/T - T1 - 2275A E-52		08/14	CHRIS CAMPAGNA	22	FOREST GLEN/ HWY 36/0800	FOREST GLEN/HWY 36/2000
ES1 ENGINE S/T - T1 - 1800A E-55		08/17	CHRIS P FABRIZIO	20	FOREST GLEN/ HWY 36/0800	FOREST GLEN/HWY 36/2000
ES1 ENGINE S/T - T1 - 1280A E-219		08/15	DAVE KIMES	22	FOREST GLEN/ HWY 36/0800	FOREST GLEN/HWY 36/2000
WTT2 ZABEL E-332		08/24	LEWIS CORMIER	1	FOREST GLEN/ HWY 36/0800	FOREST GLEN/HWY 36/2000
WTS3 WATER TENDER - T3 - DUERR E-339		08/25	MARVIN TOLBERT	1	FOREST GLEN/ HWY 36/0800	FOREST GLEN/HWY 36/2000
6. Control Operations/Work Assignments:						
Protect structures in the Forest Glen Community along Hwy. 36 and the housing area southeast of Forest Glen on the Trinity River. Assist adjoining Divisions as conditions require.						
7. Special Instructions:						
Use caution around snags and flag as needed for safety. Identify snags to be fallen with appropriate tape. Use caution while driving on all roads due to narrowing and other roadway hazards. Use caution while driving on Hwy. 36. **DO NOT OPEN RECREATIONAL GATES ON THE FOREST** Coordinate with PG&E for utility concerns. Backhaul excess equipment and trash. Verify status of all accountable property. GPS location when moved or placed and report coordinates to supply. Utilize spill kits under Mark III pumps. ** Personnel assigned as Rapid Extraction Module: Call sign is "REM1". Operations and Branch will determine where module will be staged during the operational period. REM1 will monitor command for emergency deployment. See Medical Plan page 4 for further details.						
8. Division/Group Communication Summary						
Function	Channel	RX Frequency N/W	RX Tone/NAC	TX Frequency N/W	TX Tone/NAC	Mode
COMMAND	1	168.1000	123.0	170.4500	123.0	A
TACTICAL	8	168.2500	123.0	168.2500	123.0	A
AIR TO GROUND CMD	14	169.1500	0.0	169.1500	0.0	A
9. Prepared By (Resource Unit Leader)			Approved By (Planning Section Chief)		Date	Time
<i>Gary Thompson</i>			<i>Steve [Signature]</i>		08/14/2015	2100

Division/Group Assignment List (ICS 204 WF)

1. Incident Name:			3.			
MAD_RIVER_COMPLEX			Branch:		Division/Group:	
2. Operational Period: DAY			36		A/G/S/W	
Date/Time From: 08/15/2015 0600 SAT	Date/Time To: 08/15/2015 2100 SAT					
4. Operations Personnel						
OPERATIONS CHIEF		SAM MAROUK		BRANCH DIRECTOR		
				KELLY MARTIN		
DIVISION/GROUP SUPERVISOR				AIR ATTACK SUPERVISOR		
				MIKE STOUT		
5. Resources Assigned this Period						
Strike Team / Task Force / Resource Designator	LWD	Leader	Number Persons	Drop Off PT./Time	Pick Up PT./Time	
ENG3 ENGINE - T3 - TONTO E-28 E-4	08/15	ALAN ROSE	3	DP25/0700	DP25/2000	
ENG3 ENGINE - T3 - AZ 692 E-141	08/26	ROBERT V RUSSO	4	DP25/0700	DP25/2000	
ENG3 ENGINE - T3 - PHOENIX 131 E-142	08/19	BRIAN PERRONE	4	DP25/0700	DP25/2000	
ENG6 ENGINE - T6 - NR014 MDC011 - R2K ENTERPRISES - C9378 E-17	08/22	JOE STILLSMOKING SR.	3	DP25/0700	DP25/2000	
GRD ROAD GRADER - T2 - JOHNSON, BOB CONSTRUCTION - V12370 E-114	08/23	JACK HOTTENDORF	2	DP25/0700	DP25/2000	
MISC SOUTHERN TRINITY VFD PORTABLE PUMP SN#52358 E-335	08/27		2	DP25/0700	DP25/2000	
TFLD SHANE ZIMMERMAN O-22	08/16		1	DP25/0700	DP25/2000	
TFLD RICHARD LANCASTER O-24	08/16		1	DP25/0700	DP25/2000	
TFLD STEPHEN BRENT MIZELL (T) O-59	08/16		1	DP25/0700	DP25/2000	
TFLD ERIC NEISWANGER (T) O-60	08/16		1	DP25/0700	DP25/2000	
SOF2 RON SASS O-223	08/15		1			
READ MARTIN HUTTEN O-404	08/28		1	DP25/0700	DP25/2000	
READ JOE DELABRUE O-405	08/28		1	DP25/0700	DP25/2000	
6. Control Operations/Work Assignments:						
Patrol and mop up to secure fire perimeter as directed by area supervisor. Pull and back haul all remaining hose and fittings as well as flagging and drop point signs.						
7. Special Instructions:						
Use caution around snags and flag as needed for safety. Identify snags to be fallen with appropriate tape. Use caution while driving on all roads due to narrowing and other roadway hazards. Use caution while driving on Highway 36. **DO NOT OPEN RECREATIONAL GATES ON FOREST** Backhaul excess equipment and trash. Verify status of all accountable property. GPS location when moved or placed and report coordinates to supply. Utilize spill kits under Mark III pumps.						
8. Division/Group Communication Summary						
Function	Channel	RX Frequency N/W	RX Tone/NAC	TX Frequency N/W	TX Tone/NAC	Mode
COMMAND	1	168.1000	123.0	170.4500	123.0	A
TACTICAL	4	166.5500	123.0	166.5500	123.0	A
AIR TO GROUND CMD	14	169.1500	0.0	169.1500	0.0	A
9. Prepared By (Resource Unit Leader)			Approved By (Planning Section Chief)		Date	Time
<i>Gary Thompson</i>			<i>Steve [Signature]</i>		08/14/2015	2100

Division/Group Assignment List (ICS 204 WF)

1. Incident Name:		3.	
MAD_RIVER_COMPLEX		Branch:	Division/Group:
2. Operational Period:		36	A/G/S/W
DAY			
Date/Time From: 08/15/2015 0600	SAT	Date/Time To: 08/15/2015 2100	SAT
4. Operations Personnel			
OPERATIONS CHIEF	SAM MAROUK	BRANCH DIRECTOR	KELLY MARTIN
DIVISION/GROUP SUPERVISOR		AIR ATTACK SUPERVISOR	MIKE STOUT

7. Special Instructions:

** Personnel assigned as Rapid Extraction Module: Call sign is "REM1". Operations and Branch will determine where module will be staged during the operational period. REM1 will monitor command for emergency deployment. See Medical Plan page 4 for further details.

8. Division/Group Communication Summary						
Function	Channel	RX Frequency N/W	RX Tone/NAC	TX Frequency N/W	TX Tone/NAC	Mode
COMMAND	1	168.1000	123.0	170.4500	123.0	A
TACTICAL	4	166.5500	123.0	166.5500	123.0	A
AIR TO GROUND CMD	14	169.1500	0.0	169.1500	0.0	A

9. Prepared By (Resource Unit Leader) <i>Gary Thompson</i>	Approved By (Planning Section Chief) <i>[Signature] PSC 2</i>	Date 08/14/2015	Time 2100
--	---	---------------------------	---------------------

Division/Group Assignment List (ICS 204 WF)

1. Incident Name:			3.			
MAD_RIVER_COMPLEX			Branch:		Division/Group:	
2. Operational Period: DAY			LASSIC		AA/YY	
Date/Time From: 08/15/2015 0600 SAT		Date/Time To: 08/15/2015 2100 SAT				
4. Operations Personnel						
OPERATIONS CHIEF		SAM MAROUK		BRANCH DIRECTOR		
				MARK A JAMIESON		
DIVISION/GROUP SUPERVISOR		KIM OLSON		AIR ATTACK SUPERVISOR		
				MIKE STOUT		
5. Resources Assigned this Period						
Strike Team / Task Force / Resource Designator		LWD	Leader	Number Persons	Drop Off PT./Time	Pick Up PT./Time
HC2 CREW - T2 - NORTH PACIFIC FORESTRY C-2		08/14	ADRIAN PEREZ	20	DP19/0800	DP19/2000
ES3 ENGINE S/T - T3 - A2S E-74		08/19	PAT OJEDA	19	DP19/0800	DP19/2000
WT-T2- TT CONST. E-186		08/14	CHRIS WILSON	1	DP19/0800	DP19/2000
FELB MICHAEL PHILIP WACHHOLZ O-184		08/21		1	DP19/0800	DP19/2000
FAL1 FALLER - MORGANTREER FALLERS-3 O-282		08/21		2	DP19/0800	DP19/2000
FAL1 FALLER - NORTH ZONE FALLERS, INC O-283		08/20	ROBERT FREEMAN	2	DP19/0800	DP19/2000
TFLD CLINT GREEN O-290		08/20		1	DP19/0800	DP19/2000
SOFR JOHN FOLEY O-31		08/16		1		
FEMT DOUG STUART O-323		08/22		1	DP19/0800	DP19/2000
FEMP FLORENCIO J BARRIOS O-180		08/20		1	DP19/0800	DP19/2000
6. Control Operations/Work Assignments:						
<p>Conduct firing operations as needed to limit fire spread from the area of H1 to DP68. Patrol and mop up along the 01S07 Rd 200 feet to secure fireline, where safety permits from the Division AA/CC break to DP68. Scout for opportunities to limit fire spread to the north from Blanket Creek.</p>						
7. Special Instructions:						
<p>Use caution around snags and flag as needed for safety. Identify snags to be fallen with appropriate tape. Use caution while driving on all roads due to narrowing and other roadway hazards. Ruth Lake community being is repopulated on 8-15-15. Be aware of wildlife in the fire area and use caution when encountered. Do not leave trash or food as it may affect wildlife. Backhaul excess equipment and trash. Verify status of all accountable property. GPS location when moved or placed and report coordinates to supply. Utilize MIST tactics in wilderness and when around sensitive plants or ARCH sites. Coordinate with READS for appropriate actions in wilderness areas and when encountering sensitive plants, ARCH sites, etc. Contact ground support when establishing or correcting Drop Point locations.</p>						
** Personnel assigned as Rapid Extraction Module: Call sign is "REM1". Operations and Branch will determine where module will be staged during the						
8. Division/Group Communication Summary						
Function	Channel	RX Frequency N/W	RX Tone/NAC	TX Frequency N/W	TX Tone/NAC	Mode
COMMAND	1	168.1000	123.0	170.4500	123.0	A
TACTICAL	10	154.2875	123.0	154.2875	123.0	A
AIR TO GROUND CMD	14	169.1500	0.0	169.1500	0.0	A
9. Prepared By (Resource Unit Leader)		Approved By (Planning Section Chief)		Date	Time	
<i>Gary Thompson</i>		<i>Stacey [Signature]</i>		08/14/2015	2100	

Division/Group Assignment List (ICS 204 WF)

1. Incident Name:				3.			
MAD_RIVER_COMPLEX				Branch: LASSIC		Division/Group: AA/YY	
2. Operational Period: DAY							
Date/Time From: 08/15/2015 0600 SAT		Date/Time To: 08/15/2015 2100 SAT					
4. Operations Personnel							
OPERATIONS CHIEF		SAM MAROUK		BRANCH DIRECTOR		MARK A JAMIESON	
DIVISION/GROUP SUPERVISOR		KIM OLSON		AIR ATTACK SUPERVISOR		MIKE STOUT	
7. Special instructions:							
operational period. REM1 will monitor command for emergency deployment. See Medical Plan page 4 for further details.							
8. Division/Group Communication Summary							
Function	Channel	RX Frequency N/W	RX Tone/NAC	TX Frequency N/W	TX Tone/NAC	Mode	
COMMAND	1	168.1000	123.0	170.4500	123.0	A	
TACTICAL	10	154.2875	123.0	154.2875	123.0	A	
AIR TO GROUND CMD	14	169.1500	0.0	169.1500	0.0	A	
9. Prepared By (Resource Unit Leader)				Approved By (Planning Section Chief)		Date	Time
<i>Gary Thompson</i>				<i>Steve [Signature]</i>		08/14/2015	2100

Division/Group Assignment List (ICS 204 WF)

1. Incident Name:			3.			
MAD_RIVER_COMPLEX			Branch:		Division/Group:	
2. Operational Period: DAY			LASSIC		CC	
Date/Time From: 08/15/2015 0600 SAT		Date/Time To: 08/15/2015 2100 SAT				
4. Operations Personnel						
OPERATIONS CHIEF		SAM MAROUK		BRANCH DIRECTOR		
				MARK A JAMIESON		
DIVISION/GROUP SUPERVISOR		JAMES C SNOW TONY THALER (T)		AIR ATTACK SUPERVISOR		
				MIKE STOUT		
5. Resources Assigned this Period						
Strike Team / Task Force / Resource Designator		LWD	Leader	Number Persons	Drop Off PT./Time	Pick Up PT./Time
HC2 CREW - T2 - MQ FRANCO REFOREST C-7		08/15	ARMANDO CASTRO	20	DP53/0800	DP53/2000
HC2 CREW - T2 - MQ FRANCO REFORESTATION C-8		08/15	JOSE QUEVADO	20	DP53/0800	DP53/2000
ES1 ENGINE S/T - T1 - 1075A E-15		08/15	CARL BJERKE	22	DP53/0800	DP53/2000
ENG3 ENGINE - T3 - A2S 231 E-144		08/18	DARRELL A CRAIG	3	DP53/0800	DP53/2000
ENG3 ENGINE - T3 - MARTINEZ 316 E-145		08/19	JAMES GONZALES	3	DP53/0800	DP53/2000
WTS3 WATER TENDER - T3 - DUERR E-339		08/25	MARVIN TOLBERT	1	DP53/0800	DP53/2000
FELB RHETT L WHISENHUNT O-213		08/19		1	DP53/0800	DP53/2000
FAL1 MODULE, FALLER - PRO PLUS FALLERS O-278		08/21	KEN WOODMAN	2	DP53/0800	DP53/2000
FAL1 FALM - PRO PLUS FALLERS O-279		08/21	PAT CAMPBELL	2	DP53/0800	DP53/2000
TFLD MATIAS TELLES O-10		08/17		1	DP53/0800	DP53/2000
TFLD EZRA ENGLESON (T) O-61		08/17		1	DP53/0800	DP53/2000
SOFR ELLIOTT SHAWN DUGGAR O-202		08/20		1	DP53/0800	DP53/2000
FEMP LARRY R CAMPBELL O-106		08/17		1	DP53/0800	DP53/2000
FEMT NICK GABBARD O-346		08/23		1	DP53/0800	DP53/2000
6. Control Operations/Work Assignments:						
Scout and prep 01S07 Rd south from Div AA/CC break for future firing operation. Be prepared to conduct firing operation if fire activity and progression dictate.						
7. Special Instructions:						
Use caution around snags and flag as needed for safety. Identify snags to be fallen with appropriate tape. Use caution while driving on all roads due to narrowing and other roadway hazards. Use caution while driving on Highway 36. **DO NOT OPEN RECREATIONAL GATES ON FOREST** Backhaul excess equipment and trash. Verify status of all accountable property. GPS location when moved or placed and report coordinates to supply. Utilize spill kits under Mark III pumps. Coordinate with READS for appropriate actions in wilderness areas and when encountering sensitive plants, ARCH sites, etc. Utilize fish screens on all drafting						
8. Division/Group Communication Summary						
Function	Channel	RX Frequency N/W	RX Tone/NAC	TX Frequency N/W	TX Tone/NAC	Mode
COMMAND	1	168.1000	123.0	170.4500	123.0	A
TACTICAL	9	159.4725	123.0	159.4725	123.0	A
AIR TO GROUND CMD	14	169.1500	0.0	169.1500	0.0	A
9. Prepared By (Resource Unit Leader)		Approved By (Planning Section Chief)		Date	Time	
<i>Gary Thompson</i>		<i>David B. C. 2</i>		08/14/2015	2100	

Division/Group Assignment List (ICS 204 WF)

1. Incident Name:		3.	
MAD_RIVER_COMPLEX		Branch:	Division/Group:
2. Operational Period: DAY		LASSIC	CC
Date/Time From: 08/15/2015 0600 SAT	Date/Time To: 08/15/2015 2100 SAT		
4. Operations Personnel			
OPERATIONS CHIEF	SAM MAROUK	BRANCH DIRECTOR	MARK A JAMIESON
DIVISION/GROUP SUPERVISOR	JAMES C SNOW TONY THALER (T)	AIR ATTACK SUPERVISOR	MIKE STOUT

7. Special Instructions:

spots except for Ruth Lake.

** Personnel assigned as Rapid Extraction Module: Call sign is "REM1". Operations and Branch will determine where module will be staged during the operational period. REM1 will monitor command for emergency deployment. See Medical Plan page 4 for further details.

8. Division/Group Communication Summary

Function	Channel	RX Frequency N/W	RX Tone/NAC	TX Frequency N/W	TX Tone/NAC	Mode
COMMAND	1	168.1000	123.0	170.4500	123.0	A
TACTICAL	9	159.4725	123.0	159.4725	123.0	A
AIR TO GROUND CMD	14	169.1500	0.0	169.1500	0.0	A

9. Prepared By (Resource Unit Leader) <i>Gary Thompson</i>	Approved By (Planning Section Chief) <i>Steve PSC</i>	Date 08/14/2015	Time 2100
--	---	---------------------------	---------------------

Division/Group Assignment List (ICS 204 WF)

1. Incident Name:			3.			
MAD_RIVER_COMPLEX			Branch:		Division/Group:	
2. Operational Period: DAY			LASSIC		JJ	
Date/Time From: 08/15/2015 0600 SAT	Date/Time To: 08/15/2015 2100 SAT					
4. Operations Personnel						
OPERATIONS CHIEF		SAM MAROUK		BRANCH DIRECTOR		
				MARK A JAMIESON		
DIVISION/GROUP SUPERVISOR		UNSTAFFED		AIR ATTACK SUPERVISOR		
				MIKE STOUT		
5. Resources Assigned this Period						
Strike Team / Task Force / Resource Designator		LWD	Leader	Number Persons	Drop Off PT./Time	Pick Up PT./Time
UNSTAFFED						
6. Control Operations/Work Assignments:						
Unstaffed Scout as resources become available. Initial dozerline was constructed but requires further prep work from CC/JJ division break to JJ/LL division break.						
7. Special Instructions:						
Use caution around snags and flag as needed for safety. Identify snags to be fallen with appropriate tape. Use caution while driving on all roads due to narrowing and other roadway hazards. Use caution while driving on Highway 36. **DO NOT OPEN RECREATIONAL GATES ON FOREST** Verify status of all accountable property. GPS location when moved or placed and report coordinates to supply. Utilize spill kits under Mark III pumps. a. Backhaul excess equipment and trash. CalFire to have Mad River Complex in Humboldt Complex comm. plan. Mad River resources contact CalFire on Mad River Command 2. ** Personnel assigned as Rapid Extraction Module: Call sign is "REM1". Operations and Branch will determine where module will be staged during the operational period. REM1 will monitor command for emergency deployment. See Medical Plan page 4 for further details.						
8. Division/Group Communication Summary						
Function	Channel	RX Frequency N/W	RX Tone/NAC	TX Frequency N/W	TX Tone/NAC	Mode
COMMAND	1	168.1000	123.0	170.4500	123.0	A
TACTICAL	7	166.7750	123.0	166.7750	123.0	A
AIR TO GROUND CMD	14	169.1500	0.0	169.1500	0.0	A
9. Prepared By (Resource Unit Leader)			Approved By (Planning Section Chief)		Date	Time
Gary Thompson			D. L. L. PSC 2		08/14/2015	2100

Division/Group Assignment List (ICS 204 WF)

1. Incident Name:			3.			
MAD_RIVER_COMPLEX			Branch:		Division/Group:	
2. Operational Period:			DAY		LASSIC LL/TT	
Date/Time From: 08/15/2015 0600 SAT		Date/Time To: 08/15/2015 2100 SAT				
4. Operations Personnel						
OPERATIONS CHIEF		SAM MAROUK		BRANCH DIRECTOR		MARK A JAMIESON
DIVISION/GROUP SUPERVISOR		MATT CHAMPA ERIC NOLAN; SEAN WHALEN (T)		AIR ATTACK SUPERVISOR		MIKE STOUT
5. Resources Assigned this Period						
Strike Team / Task Force / Resource Designator		LWD	Leader	Number Persons	Drop Off PT./Time	Pick Up PT./Time
DOZ2	DOZER-T2-WURLITZER 24HR E-213	08/21	JOSHUA ROGERS	3	DP53/0800	DP53/2000
DOZ2	TOM'S EARTHMOVING & EXCAVATING INC. E-31	08/15	TOM FUNES	1	DP53/0800	DP53/2000
DOZ2	DOZER-T2-BUCK TRUCKING 24HR E-212	08/20	DON ANDREWS	2	DP53/0800	DP53/2000
DOZ2	DOZER-T2-INLAND E-33	08/17	JAMES DOUGHTERY	2	DP53/0800	DP53/2000
DOZ2	DOZER-T2-NORTHSTATE EQUIP 24HR E- 211	08/22	SCOTT HARVEY	2	DP53/0800	DP53/2000
SKD1	SKIDDER - T1 - JIM JOHNSON LOG E-192	08/20	HANK JOHNSON	2	DP53/0800	DP53/2000
FELB	JOHN M STROM O-385	08/16		1	DP53/0800	DP53/2000
FAL1	FALM - MILLER WOOD PRODUCTS O-302	08/21	ZACHARY PAGNOTTA	2	DP53/0800	DP53/2000
HEQB	TOMMY STROTHER O-220	08/22		1	DP53/0800	DP53/2000
HEQB	ANTHONY L DAVIS O-312	08/17		1	DP53/0800	DP53/2000
HEQB	KARL EDWIN BYRD O-371	08/27		1	DP53/0800	DP53/2000
HEQB	COREY LEE KLAMUT O-218	08/22		1	DP53/0800	DP53/2000
HEQB	RENICK JAMES SEANOR O-373	08/25		1	DP53/0800	DP53/2000
HEQB	KEVIN DANIEL SHERRETZ O-11	08/18		1	DP53/0800	DP53/2000
HEQB	JEFF HIGHFILL O-297	08/22		1	DP53/0800	DP53/2000
HEQB	CODY COX O-317	08/19		1	DP53/0800	DP53/2000
HEQB	NATHAN MARTONE (T) O-158	08/14		1	DP53/0800	DP53/2000
SOF2	GARY SEXTON O-379	08/26		1		
READ	JEREMIAH KARUZAS O-191	08/19		1	DP53/0800	DP53/2000
READ	JASON S MARTIN O-136	08/19		1	DP53/0800	DP53/2000
6. Control Operations/Work Assignments:						
8. Division/Group Communication Summary						
Function	Channel	RX Frequency N/W	RX Tone/NAC	TX Frequency N/W	TX Tone/NAC	Mode
COMMAND	1	168.1000	123.0	170.4500	123.0	A
TACTICAL	5	168.6000	123.0	168.6000	123.0	A
AIR TO GROUND CMD	14	169.1500	0.0	169.1500	0.0	A
9. Prepared By (Resource Unit Leader)			Approved By (Planning Section Chief)		Date	Time
<i>Gary Thompson</i>			<i>Stacy [Signature]</i>		08/14/2015	2100

Division/Group Assignment List (ICS 204 WF)

1. Incident Name:			3.			
MAD_RIVER_COMPLEX			Branch:		Division/Group:	
2. Operational Period: DAY			LASSIC		LL/TT	
Date/Time From: 08/15/2015 0600 SAT	Date/Time To: 08/15/2015 2100 SAT					
4. Operations Personnel						
OPERATIONS CHIEF		SAM MAROUK		BRANCH DIRECTOR		
				MARK A JAMIESON		
DIVISION/GROUP SUPERVISOR		MATT CHAMPA ERIC NOLAN; SEAN WHALEN (T)		AIR ATTACK SUPERVISOR		
				MIKE STOUT		
6. Control Operations/Work Assignments:						
Scout division when resources are available. Initial dozerline was constructed but requires further prep from Divisions JJ/LL break to Division LL/TT break. When resources are available prep for firing operations. Improve private road south of H3 along Little Van Duzen River. Coordinate operations and plans with CalFire.						
7. Special Instructions:						
<p>Use caution around snags and flag as needed for safety. Identify snags to be fallen with appropriate tape.</p> <p>Use caution while driving on all roads due to narrowing and other roadway hazards. Use caution while driving on Highway 36.</p> <p>**DO NOT OPEN RECREATIONAL GATES ON FOREST**</p> <p>Backhaul excess equipment and trash.</p> <p>Verify status of all accountable property. GPS location when moved or placed and report coordinates to supply. Utilize spill kits under Mark III pumps.</p> <p>** Personnel assigned as Rapid Extraction Module: Call sign is "REM1". Operations and Branch will determine where module will be staged during the operational period. REM1 will monitor command for emergency deployment. See Medical Plan page 4 for further details.</p>						
8. Division/Group Communication Summary						
Function	Channel	RX Frequency N/W	RX Tone/NAC	TX Frequency N/W	TX Tone/NAC	Mode
COMMAND	1	168.1000	123.0	170.4500	123.0	A
TACTICAL	5	168.6000	123.0	168.6000	123.0	A
AIR TO GROUND CMD	14	169.1500	0.0	169.1500	0.0	A
9. Prepared By (Resource Unit Leader)			Approved By (Planning Section Chief)		Date	Time
<i>Dave Thompson</i>			<i>Steve HSC 2</i>		08/14/2015	2100

Division/Group Assignment List (ICS 204 WF)

1. Incident Name:			3.			
MAD_RIVER_COMPLEX			Branch:		Division/Group:	
2. Operational Period: DAY			LASSIC		V V	
Date/Time From: 08/15/2015 0600 SAT		Date/Time To: 08/15/2015 2100 SAT				
4. Operations Personnel						
OPERATIONS CHIEF		SAM MAROUK		BRANCH DIRECTOR		
				MARK A JAMIESON		
DIVISION/GROUP SUPERVISOR		CALEB FINCH HAROLD L KIBBE		AIR ATTACK SUPERVISOR		
				MIKE STOUT		
5. Resources Assigned this Period						
Strike Team / Task Force / Resource Designator		LWD	Leader	Number Persons	Drop Off PT./Time	Pick Up PT./Time
HC1 CREW - T1 - SHASTA LAKE IHC C-59		08/23	DONOVAN LEE	20	CROOKS SPIKE/0800	CROOKS SPIKE/2100
HC2I CREW - T2IA - IRON MOUNTAIN C-25		08/19	STEVE NICHOLS	20	CROOKS SPIKE/0800	CROOKS SPIKE/2100
HC2 CREW - T2 - MQ FRANCO REFORESTATION C-9		08/15	ISAURO TORRES	20	CROOKS SPIKE/0800	CROOKS SPIKE/2100
HC2I CREW - T2IA - INYO REGULARS C-43		08/15	JAMES B MACTAGGART	20	CROOKS SPIKE/0800	CROOKS SPIKE/2100
ENGINE S/T - T6 - MAD RIVER 2 E-902		08/20	MICHAEL LOEFFLER	15	CROOKS SPIKE/0800	CROOKS SPIKE/2100
STEN MICHAEL LOEFFLER E-902.1		08/20		1	CROOKS SPIKE/0800	CROOKS SPIKE/2100
ENG6 RED TRUCK WILDFIRE 04 E-902.2		08/20		3	CROOKS SPIKE/0800	CROOKS SPIKE/2100
ENG6 A-TEAM WILDFIRE E-902.3		08/20		3	CROOKS SPIKE/0800	CROOKS SPIKE/2100
ENG6 GREY WOLF E-902.4		08/20		3	CROOKS SPIKE/0800	CROOKS SPIKE/2100
ENG6 CENTRAL WILDFIRE 763 E-902.5		08/20		3	CROOKS SPIKE/0800	CROOKS SPIKE/2100
ENG6 FIRE MOG 440 E-902.6		08/20		3	CROOKS SPIKE/0800	CROOKS SPIKE/2100
ES6 ENGINE S/T - T6 - MAD RIVER 4 E-907			MATTHEW JAMES / DAN GOVONI (T)	17	CROOKS SPIKE/0800	CROOKS SPIKE/2100
STEN MATTHEW JAMES O-348 E-907.1		08/25		1	CROOKS SPIKE/0800	CROOKS SPIKE/2100
STEN DAN GOVONI O-350 (T) E-907.2		08/25		1	CROOKS SPIKE/0800	CROOKS SPIKE/2100
ENG6 R CONSTRUCTION E-311 E-907.3		08/25	RICHARD DEROCHE	3	CROOKS SPIKE/0800	CROOKS SPIKE/2100
ENG6 WHITE GRASS E-312 E-907.4		08/25	CLIFFORD WHITEGRASS	3	CROOKS SPIKE/0800	CROOKS SPIKE/2100
ENG6 HIGH DESERT SERVICES 1 E-317 E-907.5		08/25	THOMAS HANKS	3	CROOKS SPIKE/0800	CROOKS SPIKE/2100
ENG6 HNF 621 E-318 E-907.6		08/25	MICHAEL STANAWAY	3	CROOKS SPIKE/0800	CROOKS SPIKE/2100
ENG6 PINESDALE 6018 E-319 E-907.7		08/25	WESTON JESSUP	3	CROOKS SPIKE/0800	CROOKS SPIKE/2100
DO22 - T2 - ABLE SERVICES E-34		08/16	JAMES GORDON	2	CROOKS SPIKE/0800	CROOKS SPIKE/2100
8. Division/Group Communication Summary						
Function	Channel	RX Frequency N/W	RX Tone/NAC	TX Frequency N/W	TX Tone/NAC	Mode
COMMAND	1	168.1000	123.0	170.4500	123.0	A
TACTICAL	6	166.7250	123.0	166.7250	123.0	A
AIR TO GROUND CMD	14	169.1500	0.0	169.1500	0.0	A
9. Prepared By (Resource Unit Leader)		Approved By (Planning Section Chief)		Date	Time	
<i>Gary Thompson</i>		<i>Steve [Signature]</i>		08/14/2015	2100	

Division/Group Assignment List (ICS 204 WF)

1. Incident Name:			3.			
MAD_RIVER_COMPLEX			Branch:		Division/Group:	
2. Operational Period: DAY			LASSIC		V V	
Date/Time From: 08/15/2015 0600 SAT		Date/Time To: 08/15/2015 2100 SAT				
4. Operations Personnel						
OPERATIONS CHIEF		SAM MAROUK		BRANCH DIRECTOR		
				MARK A JAMIESON		
DIVISION/GROUP SUPERVISOR		CALEB FINCH HAROLD L KIBBE		AIR ATTACK SUPERVISOR		
				MIKE STOUT		
5. Resources Assigned this Period						
Strike Team / Task Force / Resource Designator		LWD	Leader	Number Persons	Drop Off PT./Time	Pick Up PT./Time
WT - T2 - DARRAH LOGGING E-261		08/22	KEITH DARRAH	1	CROOKS SPIKE/0800	CROOKS SPIKE/2100
WT - T2 - DARRAH LOGGING E-262		08/22	TAMI QUINONEZ	1	CROOKS SPIKE/0800	CROOKS SPIKE/2100
WT - T2 - DARRAH LOGGING E-263		08/22	GARY QUINONES	1	CROOKS SPIKE/0800	CROOKS SPIKE/2100
WTS3 WATER TENDER - SUPPORT - T3 - SUN TURTLE - A40045 E-340		08/25	GARY BAISDEN		CROOKS SPIKE/0800	CROOKS SPIKE/2100
WTS3 RODGERS A.W.D. WATER TRUCKS E-341		08/26	BUDDY ROGERS		CROOKS SPIKE/0800	CROOKS SPIKE/2100
FELB KEVIN W COX O-288		08/22		1	CROOKS SPIKE/0800	CROOKS SPIKE/2100
FALM- UNDERDOG - O-304		08/22	CRAIG MORGAN	2	CROOKS SPIKE/0800	CROOKS SPIKE/2100
FALM - PRO PLUS FALLERS - O-299		08/21		2	CROOKS SPIKE/0800	CROOKS SPIKE/2100
TFLD WESLEY BRANDEN SULTEMEIER O-23		08/15		1	CROOKS SPIKE/0800	CROOKS SPIKE/2100
TFLD JOHN W KAUFFMAN O-291		08/15		1	CROOKS SPIKE/0800	CROOKS SPIKE/2100
TFLD TODD HYATT O-368		08/27		1	CROOKS SPIKE/0800	CROOKS SPIKE/2100
HEQB ROBERT GARRISON JR O-244		08/22		1	CROOKS SPIKE/0800	CROOKS SPIKE/2100
FOBS BRIAN JOSEPH STUPAK O-54		08/17		1	CROOKS SPIKE/0800	CROOKS SPIKE/2100
FOBS BRIAN ZABEL (T) O-94		08/17		1	CROOKS SPIKE/0800	CROOKS SPIKE/2100
SOF2 GARY SEXTON O-379		08/26		1	CROOKS SPIKE/0800	CROOKS SPIKE/2100
FEMP TRAVIS HOOPER O-321		08/22		1	CROOKS SPIKE/0800	CROOKS SPIKE/2100
FEMT ERIC KLEMOWICZ O-174		08/19		1	CROOKS SPIKE/0800	CROOKS SPIKE/2100
6. Control Operations/Work Assignments:						
Complete prep on dozerline for firing operations from DP68 west to the Little Van Duzen River. Improve direct handline in bottom of Branch Creek and look for opportunities to construct line south to the Little Van Duzen Creek. Snag hazard trees when possible.						
7. Special Instructions:						
8. Division/Group Communication Summary						
Function	Channel	RX Frequency N/W	RX Tone/NAC	TX Frequency N/W	TX Tone/NAC	Mode
COMMAND	1	168.1000	123.0	170.4500	123.0	A
TACTICAL	6	166.7250	123.0	166.7250	123.0	A
AIR TO GROUND CMD	14	169.1500	0.0	169.1500	0.0	A
9. Prepared By (Resource Unit Leader)			Approved By (Planning Section Chief)		Date	Time
<i>Gary Thompson</i>			<i>Steve PSC</i>		08/14/2015	2100

Division/Group Assignment List (ICS 204 WF)

1. Incident Name:				3.			
MAD_RIVER_COMPLEX				Branch:		Division/Group:	
2. Operational Period: DAY				LASSIC		V V	
Date/Time From: 08/15/2015 0600 SAT		Date/Time To: 08/15/2015 2100 SAT					
4. Operations Personnel							
OPERATIONS CHIEF		SAM MAROUK		BRANCH DIRECTOR		MARK A JAMIESON	
DIVISION/GROUP SUPERVISOR		CALEB FINCH HAROLD L KIBBE		AIR ATTACK SUPERVISOR		MIKE STOUT	
7. Special Instructions:							
<p>Use MIST tactics in wilderness, around sensitive plants, and around ARCH sites. Use caution around snags and flag as needed for safety. Identify snags to be fallen with appropriate tape. Use caution while driving on all roads due to narrowing and other roadway hazards. Use caution while driving on Highway 36. **DO NOT OPEN RECREATIONAL GATES ON FOREST** Backhaul excess equipment and trash. Verify status of all accountable property. GPS location when moved or placed and report coordinates to supply. Coordinate with READS for appropriate actions in wilderness areas and when encountering sensitive plants, ARCH sites, etc.</p> <p>** Personnel assigned as Rapid Extraction Module: Call sign is "REM1". Operations and Branch will determine where module will be staged during the operational period. REM1 will monitor command for emergency deployment. See Medical Plan page 4 for further details.</p>							
8. Division/Group Communication Summary							
Function	Channel	RX Frequency N/W	RX Tone/NAC	TX Frequency N/W	TX Tone/NAC	Mode	
COMMAND	1	168.1000	123.0	170.4500	123.0	A	
TACTICAL	6	166.7250	123.0	166.7250	123.0	A	
AIR TO GROUND CMD	14	169.1500	0.0	169.1500	0.0	A	
9. Prepared By (Resource Unit Leader)			Approved By (Planning Section Chief)			Date	Time
<i>Gay Thompson</i>			<i>Oliver J. [Signature]</i>			08/14/2015	2100

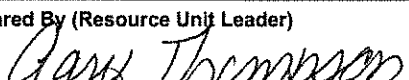
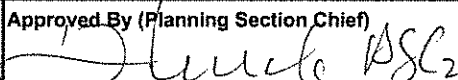
Division/Group Assignment List (ICS 204 WF)

1. Incident Name:			3.			
MAD_RIVER_COMPLEX			LASSIC		LASSIC SPG	
2. Operational Period: DAY						
Date/Time From: 08/15/2015 0600 SAT		Date/Time To: 08/15/2015 2100 SAT				
4. Operations Personnel						
OPERATIONS CHIEF		SAM MAROUK		BRANCH DIRECTOR		MARK A JAMIESON
DIVISION/GROUP SUPERVISOR		ANDY LANG BRANDYN HARVEY (T)		AIR ATTACK SUPERVISOR		MIKE STOUT
5. Resources Assigned this Period						
Strike Team / Task Force / Resource Designator		LWD	Leader	Number Persons	Drop Off PT./Time	Pick Up PT./Time
ES3 ENGINE - T3 - A1S - STRIKE TEAM 1 E-73		08/19	MATHEW MAYHALL	22	DP50/0800	DP50/2000
ES3 ENGINE - T3 - A2S - STRIKE TEAM #2 E-76		08/19	DOUG T NIEMYSKI / ART GONZALES (T)	17	DP50/0800	DP50/2000
ENG3 ENGINE - T3 - SARATOGA SPRINGS 263 E-5		08/15	BLAINE COOMBS / JAKE BECK (T)	3	DP50/0800	DP50/2000
ENG3 ENGINE - T3 - UTAH COUNTY FD 11 E-7		08/15	PATRICK CARLSON / JOSH LANE (T)	6	DP50/0800	DP50/2000
ENG3 ENGINE - T3 - LONE PEAK 1668 E-16		08/14	KYLE THATCHER / JOSH BERG (T)	5	DP50/0800	DP50/2000
WTS2 WATER TENDER - DARRAH LOGGING INC. E-259		08/22	TARA ELAM	1	DP50/0800	DP50/2000
WTS2 WATER TENDER - DARRAH LOGGING INC E-260		08/22	JAMIE LEFLET	1	DP50/0800	DP50/2000
FEMP AARON M TERRY O-327		08/22		1	DP50/0800	DP50/2000
FEMT TIM MARINO O-332		08/24		1	DP50/0800	DP50/2000
6. Control Operations/Work Assignments:						
Provide structure defense in Swayback Community. Scout and develop needs for structure defense requirements for the area.						
7. Special Instructions:						
Use caution around snags and flag as needed for safety. Identify snags to be fallen with appropriate tape. Use caution while driving on all roads due to narrowing and other roadway hazards. Use caution while driving on Highway 36. **DO NOT OPEN RECREATIONAL GATES ON FOREST** Backhaul excess equipment and trash. Verify status of all accountable property. GPS location when moved or placed and report coordinates to supply. Utilize spill kits under Mark III pumps. ** Personnel assigned as Rapid Extraction Module: Call sign is "REM1". Operations and Branch will determine where module will be staged during the operational period. REM1 will monitor command for emergency deployment. See Medical Plan page 4 for further details.						
8. Division/Group Communication Summary						
Function	Channel	RX Frequency N/W	RX Tone/NAC	TX Frequency N/W	TX Tone/NAC	Mode
COMMAND	1	168.1000	123.0	170.4500	123.0	A
TACTICAL	8	168.2500	123.0	168.2500	123.0	A
AIR TO GROUND CMD	14	169.1500	0.0	169.1500	0.0	A
9. Prepared By (Resource Unit Leader)			Approved By (Planning Section Chief)		Date	Time
<i>Gary Thompson</i>			<i>D. Lacey ASL2</i>		08/14/2015	2100

Division/Group Assignment List (ICS 204 WF)

1. Incident Name:			3.			
MAD_RIVER_COMPLEX			Branch:		Division/Group:	
2. Operational Period: DAY			CONTINGENCY			
Date/Time From: 08/15/2015 0600 SAT		Date/Time To: 08/15/2015 2100 SAT				
4. Operations Personnel						
OPERATIONS CHIEF		SAM MAROUK		BRANCH DIRECTOR		
DIVISION/GROUP SUPERVISOR		BOB HARVEY		AIR ATTACK SUPERVISOR		MIKE STOUT
5. Resources Assigned this Period						
Strike Team / Task Force / Resource Designator		LWD	Leader	Number Persons	Drop Off PT./Time	Pick Up PT./Time
DOZ2 DOZER-T2-TT CONSTRUCTION E-187		08/14	STAN DRAWYER	2	TBD/0700	TBD/2000
DOZ2 DOZER-T2-JW MORRISON 1 24HR E-208		08/20	MATTHEW MORRISON	2	TBD/0700	TBD/2000
DOZ2 DOZER-T2-JW MORRISON 24HR E-209		08/20	JOHN MORRISON	2	TBD/0700	TBD/2000
DOZ2 DOZER-T2-NORTHSTATE EQUIP 24HR E-210		08/21	MAURICE RHOADES	2	TBD/0700	TBD/2000
HEQB TOMMY STROTHER O-220		08/22		1	TBD/0700	TBD/2000
HEQB ANTHONY L DAVIS (T) O-312		08/17		1	TBD/0700	TBD/2000
HEQB JESSE D KNOX O-375		08/25		1	TBD/0700	TBD/2000
HEQB DAVID RABON COMINGDEER O-376		08/26		1	TBD/0700	TBD/2000
HEQB BENJAMIN L ENGELHARDT O-377		08/27		1	TBD/0700	TBD/2000
HEQB ADAM MCCULLOUGH O-242		08/21		1	TBD/0700	TBD/2000
HEQB RENICK JAMES SEANOR O-373		08/25		1	TBD/0700	TBD/2000
HEQB JEFFREY JON WEST O-372		08/26		1	TBD/0700	TBD/2000
HEQB TERRY L BEATY O-378		08/27		1	TBD/0700	TBD/2000
FOBS SCOTT D POSNER O-55		08/18		1	TBD/0700	TBD/2000
FOBS CODY ALLEN SPENCER (T) O-98		08/18		1	TBD/0700	TBD/2000
READ PAUL S MOREY O-135		08/20		1	TBD/0700	TBD/2000
READ GEOFF LEHMANN O-401		08/27		1	TBD/0700	TBD/2000
6. Control Operations/Work Assignments:						
Construct contingency lines in the fire area east of 01S26 Rd. system in the Forest Glen area towards the 29N58 Road system along Rattlesnake Ridge. Construct contingency line from DP83 using the 01S14 Rd. system on the SHF to Hwy. 36 east of Forest Glen. Construct contingency line from DP60 along the Little Van Duzen River to prep for future firing operations.						
7. Special Instructions:						
8. Division/Group Communication Summary						
Function	Channel	RX Frequency N/W	RX Tone/NAC	TX Frequency N/W	TX Tone/NAC	Mode
COMMAND	1	168.1000	123.0	170.4500	123.0	A
TACTICAL	11	154.3025	123.0	154.3025	123.0	A
AIR TO GROUND CMD	14	169.1500	0.0	169.1500	0.0	A
9. Prepared By (Resource Unit Leader)			Approved By (Planning Section Chief)		Date	Time
Gary Thompson			Ducy AP2		08/14/2015	2100

Division/Group Assignment List (ICS 204 WF)

1. Incident Name:			3.			
MAD_RIVER_COMPLEX			Branch:		Division/Group: CONTINGENCY	
2. Operational Period: DAY						
Date/Time From: 08/15/2015 0600 SAT		Date/Time To: 08/15/2015 2100 SAT				
4. Operations Personnel						
OPERATIONS CHIEF		SAM MAROUK		BRANCH DIRECTOR		
DIVISION/GROUP SUPERVISOR		BOB HARVEY		AIR ATTACK SUPERVISOR		MIKE STOUT
7. Special Instructions:						
<p>Use caution around snags and flag as needed for safety. Identify snags to be fallen with appropriate tape. Use caution while driving on all roads due to narrowing and other roadway hazards. Use caution while driving on Highway 36. **DO NOT OPEN RECREATIONAL GATES ON FOREST** Backhaul excess equipment and trash. Verify status of all accountable property. GPS location when moved or placed and report coordinates to supply. Utilize spill kits under Mark III pumps.</p> <p>** Personnel assigned as Rapid Extraction Module: Call sign is "REM1". Operations and Branch will determine where module will be staged during the operational period. REM1 will monitor command for emergency deployment. See Medical Plan page 4 for further details.</p>						
8. Division/Group Communication Summary						
Function	Channel	RX Frequency N/W	RX Tone/NAC	TX Frequency N/W	TX Tone/NAC	Mode
COMMAND	1	168.1000	123.0	170.4500	123.0	A
TACTICAL	11	154.3025	123.0	154.3025	123.0	A
AIR TO GROUND CMD	14	169.1500	0.0	169.1500	0.0	A
9. Prepared By (Resource Unit Leader)			Approved By (Planning Section Chief)		Date	Time
					08/14/2015	2100

10. TASK/MISSION/ASSIGNMENT (Type/Function includes: Air Tactical, Retardant, Recon, Personnel Transport, Water Dropping, S&R, etc.)

TYPE/FUNCTION	NAME OF PERSONNEL OR CARGO (if applic) OR INSTRUCTIONS FOR TACTICAL AIRCRAFT	MISSION START	FLY FROM	FLY TO
Water Drops	Dip out of Ruth Lake or House Dip 40 17.30 x 123 36.94	0800	Helibase	Fire
Retardant	No retardant approved for wilderness.			
HLCO	Not assigned			
Cargo				
Passengers				
Recon	Request thru Air ops.			
Communications	Air/Ground Firing 167.8875 is to be used for aerial ignition operations ONLY.			
	Air/Ground Firing 167.8875 is tone guarded on both Tx and Rx. Tone 123.0			

SAFETY MESSAGE

Mad River Complex CA-SRF-01433

Day Shift

08/15/2015

0600-2100

MAJOR HAZARDS:

- Driving
- Hazard Trees
- Fatigue
- Firing Operations

Watch Out Situation of the day – Unburned fuel between you and the fire.

- **Driving** – Stay alert while driving as the roads on the Six Rivers N.F. are very unforgiving. It only takes a second of distraction to lose control of our vehicle. The faster you are traveling, the faster you get in trouble. Follow posted speed limits or slower: 25 MPH through Ruth & other communities, wear your seat belt & watch for wildlife, children, and cows. Also look for more traffic in the Ruth Lake Corridor as the area will be repopulated this morning.
- **Fatigue** - Constantly monitor your water and electrolyte intake to avoid dehydration. Dehydration and long work hours, coupled with poor air quality and high temperatures all impact fatigue. Maintain the work to rest ratio, 2:1.
- **Hazard Trees and Snags** – Review the Hazard Tree Indicators in your IRPG on page 22 and the Hazard Controls on page 23. Establish “Decision Points” for disengagement during high wind events. Maintain situational awareness.

FIRING OPERATIONS SAFETY

(Aerial and Hand)

- Ensure ignition plan has been adequately developed and personnel are briefed.
- All personnel to be fully qualified for their assignments. Trainees must have qualified trainers.
- Utilize Risk Mgmt. Process (IRPG p. 1) before implementing the plan.
- Required PPE to be worn by all personnel involved.
- Follow all aviation standards and procedures.

LCES must be established prior to implementing burning operations (IRPG page 7).

L.C.E.S

- **Lookouts**- Relative humidity is down and ignition probabilities up. Check your surroundings!
- **Communications**- Know your radio frequencies and be cognizant of any problems with direct communications.
- **Escape Routes**- Know them, discuss them, and reassess them!
- **Safety Zones**- Evaluate the “black” as your safety zone. Reassess the problems.

Team Safety Officers: Marty Hamel, Charlotte Jordan, Dave Morton

Day Safety Officers: Pete Mourtsen, Tony Rivers, John Martinez, Ron Sass, Gary Kemp, Gary Sexton, John Foley, Robert Martin, Shawn Duggar

Mad River Complex CA-SRF-1433 - Saturday, August 15, 2015 Day Shift

Location	Hazard	Control or Abatement Action
B, D,E, F, CC, TT, V V, AA?YY	Air Operations	<ul style="list-style-type: none"> * Follow "Aviation Watch-Out Situations" in IRPG (2014) pg.44 * Refer to IRPG (2014) pg.57 for directing bucket drops * Don't plan exclusively on air resources for medical transport or resupply as visibility may be impaired * Ensure positive communication with all air resources * Use clear concise statements when directing aircraft * Use clock directions from pilot's perspective
F, V V, AA?YY Contingency Group, LL/TT	Heavy Equipment Operations	<ul style="list-style-type: none"> * Ensure communications are established with operator prior to work * Maintain a 50'-100' exclusion area around equipment or 2 ½ times the canopy height * Before approaching; make eye contact with operator and wait for blade placement on ground * Avoid working below equipment where rolling material could jeopardize safety * Before moving or transporting equipment identify low hanging wires, ensure there is clearance
ALL DIV	Hazard Trees	<ul style="list-style-type: none"> * Follow "Hazard Tree Safety" guidelines, IRPG (2014) page 22&23 * Post lookouts in mop-up areas with high concentrations of danger trees * Don't park vehicles or take breaks in areas with high concentrations of hazard trees * Establish "Decision Points" for disengagement during high wind events
ALL DIV	Driving and Traffic	<ul style="list-style-type: none"> * Practice "Defensive Driving" techniques * Honk horn to alert personnel when backing * Use spotters when backing * Always use headlights * No texting while driving * Drive at posted or slower speed limits as conditions warrant * Be on the alert for opposing traffic that may be in your lane * Be prepared for sudden, unexpected stops * Watch for wildlife and livestock on all roads * Watch out on narrow, winding roads that may have steep drop offs * Use chock blocks, turn wheels into hill * Seat Belts are mandatory
DIV A/G/SW, B, D, E, F, V V	Power Utilities and Gas Lines	<ul style="list-style-type: none"> * Notify all personnel of downed electrical lines * Refer to the IRPG (2014) pg. 24-25 for Power Line Safety * Always treat downed wires as energized * Identify and avoid high-tension transmission lines * Identify and avoid high pressure natural gas lines * Identify and avoid damaged gas service near structures * Be aware of utility restoration in your work area
DIV D, E, F, CC, JJ, LL /TT, V V, AA?YY	Potential for Spotting and Severe Fire Behavior	<ul style="list-style-type: none"> * Share weather observations and IMET updates with all personnel assigned to division * Establish "Decision Points" to withdraw * Ensure LCES is in place (Lookout, Communications, Escape route and Safety Zone) * Use "Risk Management" process prior to taking action, refer to IRPG (2014) pg.1 * Review "Severe fire behavior potential" IRPG (2014) pg. 68 * Maintain adequate escape routes and safety zones; continue to re-evaluate throughout the shift * Factor in drought conditions and local ERC prior to operations * Base all actions on past, current and expected behavior of the fire
ALL DIV	Fireline Hazards and Mop Up	<ul style="list-style-type: none"> * Do not work directly above or below personnel during mop-up operations * Identify and make known burning stumps or roots that may cave in * Wear appropriate PPE * Watch for falling, rolling debris on steep slopes * Call out to crew personnel that may be affected by sudden rolling debris or rocks * For logs that may roll re-position perpendicular to the slope * Watch for weakened trees that may pose danger or fall * Scout areas for mop up prior to work * Maintain 8'-10' spacing when working & walking
ALL DIV	Fatigue, Overexertion dehydration and heat related illness	<ul style="list-style-type: none"> * Drink fluids throughout operational period (water and Gatorade) not energy drinks * Rotate crews out of smoky areas * Follow work / rest guidelines * Set a reasonable work pace and allow adequate rest breaks * Use buddy system to monitor personnel of heat related and fatigue issues * For Heat Related Injuries refer to IRPG (2014) pg.103
ALL DIV	Marijuana Plantations	<ul style="list-style-type: none"> * Leave area quietly in the same direction that you entered and notify DIVS * Watch for hazardous materials and be aware of possible traps in the grow area * Use extreme caution during encounters * Individuals guarding plantation may be armed * Grower may become confrontational, maintain calm demeanor and leave area
ALL DIV	Communication	<ul style="list-style-type: none"> * Maintain communication with aviation resources and suppression organization * Ensure all know frequency and protocol for contacting resources * Utilize the ICS 205 and 204
DIV D, AA?YY CC	Firing Operations Aerial Hand	<ul style="list-style-type: none"> * Only personnel trained in the use of each device will be authorized to use firing equipment * Ensure all personnel are aware of firing operation that may affect them * Wear appropriate PPE * Follow aviation standards and procedures * Ensure aerial/ground ignition plans have been adequately developed and personnel are briefed
ALL DIV	Environmental Hazards	<ul style="list-style-type: none"> * Be alert for rattlesnakes, watch footing and hand placement around rocks * Check yourself for ticks, watch for bees and other insects that bite or sting * Be alert for bears, cougars and other wildlife * Poisonous plants - identify plants and avoid * Change, wash clothing and shower regularly
Lassic Branch	Naturally Occurring Asbestos	<ul style="list-style-type: none"> * Avoid disturbing areas of Serpentine rock formations * Avoid dusty conditions to reduce exposure * Limit dust generating activities Avoid or minimize tracking dust into vehicles
Contingency	Masticator	<ul style="list-style-type: none"> * Require crewmembers to maintain a safe distance of 300 ft. from the equipment * Have suppression crew nearby with water in case friction or sparks ignite woody debris

INCIDENT RADIO COMMUNICATIONS PLAN		Incident Name		Date/Time Prepared		Operational Period Date/Time			
COMMUNICATIONS PLAN		Mad River Complex SRF-001433		8/14/15, 2000 hrs		8/15/15, 0600-2100			
Zn / Ch	Channel Name/Trunked Talkgroup	Function	Assignment	RX Freq	RX Tone/NAC	TX Freq	TX Tone/NAC	Mode A, D, M	Remarks
1	CMD 1	Command	All Divisions	168.1000	123.0	170.4500	123.0	A	Linked with CMD 2
2	CMD 2	Command	All Divisions	172.7000	123.0	163.7625	123.0	A	Linked with CMD 1
3	A/G Firing	A/G Firing	All Divisions	167.8875	123.0	167.8875	123.0	A	Helicopter Tactical
4	Tactical	Tactical	Div. A/G/SW	166.5500	123.0	166.5500	123.0	A	
5	Tactical	Tactical	Div. LL/TT/D	168.6000	123.0	168.6000	123.0	A	
6	Tactical	Tactical	Div. BVV	166.7250	123.0	166.7250	123.0	A	
7	Tactical	Tactical	Div. JJ/F	166.7750	123.0	166.7750	123.0	A	
8	Tactical	Tactical	Lassic/Forest Glen SPG	168.2500	123.0	168.2500	123.0	A	
9	Tactical	Tactical	Div. E/CC	159.4725	123.0	159.4725	123.0	A	
10	Tactical	Tactical	Div. AA/YY	154.2875	123.0	154.2875	123.0	A	
11	Tactical	Tactical	Contingency Group	154.3025	123.0	154.3025	123.0	A	
12	Dispatch	Dispatch	IA & Emergency Backup	168.7250	0.0	170.1250	103.5	A	Tone 8: Local Dispatch - IA and emergency backup
13	Tactical	Tactical	Medical	156.0750	156.7	156.0750	156.7	A	Life Flight, etc.
14	Air - Ground CMD	Air - Ground CMD	All Divisions	169.1500	0.0	169.1500	0.0	A	
15	Air - Ground TAC	Air - Ground TAC	All Divisions	166.6750	0.0	166.6750	0.0	A	
16	Emergency only	Emergency only	All Divisions	168.6250	0.0	168.6250	110.9	A	
17									
18									
19									
20	Emergency only	Emergency only	All Divisions	168.6250	0.0	168.6250	110.9	A	AIR GUARD - emerg. use only -Tone 1

Prepared By (Communications Unit Leader) *[Signature]*

Ron Regan COML COMMS LL 707-574-6058

Incident Location
County Trinity Latitude, Longitude N 40 12.334, W 123 17.844

Deviation is assumed to be narrow band unless otherwise noted in the remarks. Mode refers to either "A" (analog), "D" (digital) or "M" (mixed mode). 1/14/14 v.5

INCIDENT RADIO COMMUNICATIONS PLAN		Incident Name		Date/Time Prepared		Operational Period Date/Time			
COMMUNICATIONS PLAN		Mad River Complex SRF-001433 IA Group		8/14/15, 2000 hrs		8/15/15, 0600-2100			
Zn / Ch	Function	Channel Name/Trunked Talkgroup	Assignment	RX Freq	RX Tone/NAC	TX Freq	TX Tone/NAC	Mode A, D, M	Remarks
1	Command	SRF FN	IA - Forest Rptr Pickett	168.7250		170.1250	151.4	A	
2	Command	SRF AN	IA - Admin Rptr Pickett	168.1250		170.4750	151.4	A	
3	Tactical	R5 PROJ	IA - R5 Project	168.6625		168.6625			
4	Tactical	TAC 2	IA - R5 Crew Net	168.2000		168.2000		A	
5	Tactical	R5 TAC 5	IA - R5 Tac 5	167.1125		167.1125		A	
6	Tactical	A/G PRI	IA - FS Air-to-Ground 43	167.6000		167.6000	110.9	A	
7	Tactical	HUM CF 2	IA - Humboldt Co Fire	154.0700		159.0000	123.0	A	
8	Tactical	HUU RPT	IA - CalFire	151.2500		159.4050	127.3	A	
9	Tactical	CDF TAC3	IA - CalFire Tac 3	151.1750		151.1750	192.8	A	
10	Tactical	CDF TAC7	IA - CalFire Tac 7	151.3400		151.3400	192.8	A	
11	Command	SHF RPT	IA - Shasta Trinity NF	171.5750		169.1000	103.5	A	
12	Command	TRIVO 11	IA - Vol Trinity Command	154.4150		158.9250	114.8	A	
13	Command	TRICOM 3	IA - Trinity Co Fire	154.7850		158.7600	131.8	A	
14	Tactical	STAR F>9	IA - Star Firenet Dinsmore	155.0500		155.1150	100.0	A	
15	Tactical	TRINET	IA - Trinity Co Direct	155.1150		151.1150		A	
16	Emergency	CALCORD	IA - California Coordination	156.0750	156.7	156.0750	156.7	A	
17									
18									
19									
20									

Prepared By (Communications Unit Leader) *Ronald Regan* Incident Location County Trinity Latitude, Longitude N 40 12.334, W 123 17.844

Ron Regan COML COMMS 707-574-6058 1/14/14 v.5

Deviation is assumed to be narrow band unless otherwise noted in the remarks. Mode refers to either "A" (analog), "D" (digital) or "M" (mixed mode).

8/14/2015 SW

MEDICAL PLAN

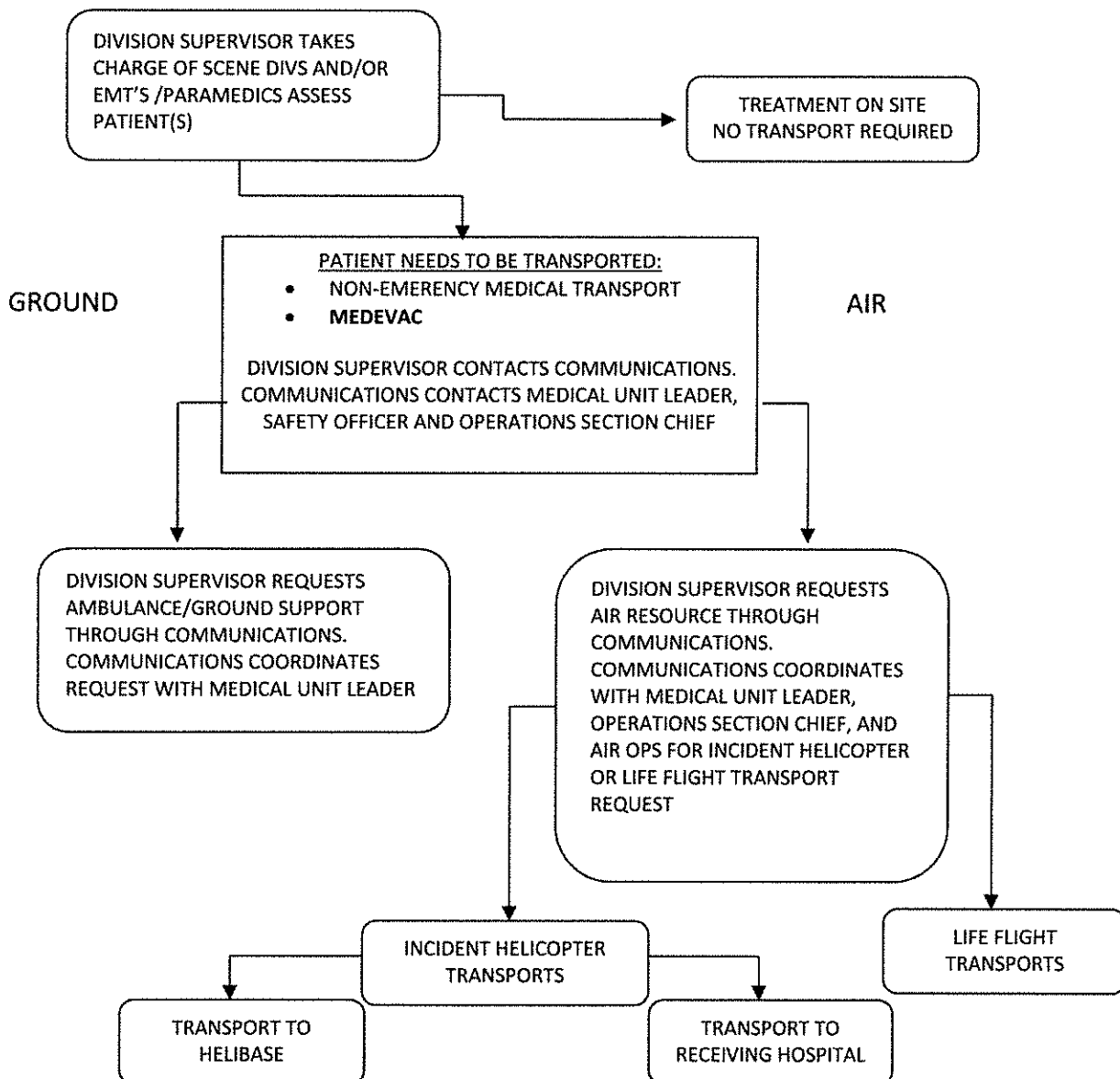
1. Incident/Project Name				2. Operational Period							
Mad River Complex				Date/Time 08/15/2015 0600-2100							
2. Aid Station											
Name		Complete Address		Phone		Advanced Life Support (ALS) Yes No					
Frontline Medical		Mad River ICP Flying AA Ranch Ruth Lake, CA		530-927-8133		XX					
3. Ambulance Services											
Name		Complete Address		Phone		Advanced Life Support (ALS) Yes No					
Ukiah Medic 9150		DP 19-DAY/Forest Glen Spike-NIGHT		707-513-0004		XX					
Ukiah Medic 9115		0106 Rd x Lower Mad River Rd DAY/ Mad River Complex ICP NIGHT		707-574-6853		XX					
Trinity County Life Support Medic 305		DP 53-DAY/Crook Creek Spike- NIGHT		530-623-2500		XX					
Southern Trinity Area Rescue		153 A Van Duzen Rd. Mad River, CA		707-574-6421		XX					
4. Air Ambulance Services											
Name		Phone		Type of Aircraft & Capability							
CAL FIRE H102 Day Hoist		707-726-1280		B205A++ Hoist							
CHP H14/H16 Day Hoist		530-242-3210		A Star B3 Hoist							
CA ANG Guard 825 North Ops Hoist/Extraction Helo		530-243-1434		H60 (Blackhawk) NVG/Hoist							
PHI Med 43/REACH		800-597-9571		EC 135 IFR/NVG B407 NVG							
5. Hospitals											
Name Complete Address		GPS Datum – NAD 83 Coordinate Standard Degrees Decimal Minutes DD° MM.MMM' N - Lat DD° MM.MMM' W - Long		Travel Time Air Gnd		Phone		Helipad Yes No		Level of Care Facility	
St Joseph Hospital 2700 Dolbeer St Eureka, CA 95501		Lat: N 40 47.02		20 Min	2.5 HRS	707-269-4250 707-442-8646		X		Level II Trauma Center	
		Long: W 124 23.67									
		VHF:									
Shasta Regional Medical Center 110 Butte St. Redding, CA 9600		Lat: N 40 35.18		30 Min	3 HRS	530-244-5353 530-243-4042		X	<input type="checkbox"/>		
		Long: W122 23.13									
		VHF:									
Redwood Memorial Hospital 3300 Renner Dr. Fortuna, CA 95540		Lat:		2.5 HRS		707-725-3361		<input type="checkbox"/>	X		
		Long:									
		VHF:									
Mercy Medical Center 2175 Rosaline Redding, CA 96001		Lat: N 40 34.29		30 Min	3 HRS	530-225-7201 530-242-4401		X	<input type="checkbox"/>	Level II Trauma Center	
		Long: W 122 23.67									
		VHF:									
UC Davis Medical Center 2315 Stockton Blvd Sacramento, CA 95817		Lat: N 38 33.17		1.5 HRS	5 HRS	916-734-3790 916-734-5669		X	<input type="checkbox"/>	Level I Trauma Center Burn Center	
		Long: W 121 27.05									
		VHF:									
6. Prepared By (Medical Unit Leader)				7. Date/Time		8. Reviewed By (Safety Officer)		9. Date/Time			
Robert Russell MEDL				08/14/2015 2000		Marty Hamel SOF1		08/14/2015 2000			

Initiate care with available resources at scene and notify DIVS when an injury occurs.

The DIVS, or designee, shall coordinate the incident and direct necessary actions. Take the following actions:

1. Determine the nature of the emergency.
2. If the emergency is a medical injury/illness, determine if the injury/illness is life threatening.
3. If the injury is life threatening, then clear designated frequency for emergency traffic.
4. Identify the on-scene point of contact by position.
5. Contact the Medical Unit Leader immediately.
6. Identify number injured, patient assessment(s) and location (geographic and/or GPS coordinates).
7. Identify on-scene medical personnel by position and last name (i.e. EMT Jones).
8. Identify preferred method of patient transport.
9. Determine any additional resources or equipment needed.

Continually evaluate the Evacuation Plan, develop contingencies in the event the first plan is not effective.



Medical Incident Report

FOR ALL MEDICAL EMERGENCIES: IDENTIFY ON SCENE INCIDENT COMMANDER BY NAME AND POSITION AND ANNOUNCE "MEDICAL EMERGENCY" TO INITIATE RESPONSE FROM IMT COMMUNICATIONS/DISPATCH.

Use items one through nine to communicate situation to communications/dispatch.

1. CONTACT COMMUNICATIONS/DISPATCH

Ex: "Communications, Div. Alpha. Stand-by for Priority Medical Incident Report." (If life threatening request designated frequency be cleared for emergency traffic.)

2. INCIDENT STATUS: Provide incident summary and command structure.

Nature of Injury/Illness		<i>Describe the injury (Ex: Broken leg with bleeding)</i>
Incident Name		<i>Geographic Name + "Medical" (Ex: Trout Meadow Medical)</i>
Incident Commander		<i>Name of IC</i>
Patient Care		<i>Name of Care Provider (Ex: EMT Smith)</i>

3. INITIAL PATIENT ASSESSMENT: Complete this section for each patient. This is only a brief, initial assessment. Provide additional patient info after completing this 9 Line Report.

Number of Patients:	Male / Female	Age:	Weight:
Conscious? <input type="checkbox"/> YES <input type="checkbox"/> NO = MEDEVAC!		Breathing? <input type="checkbox"/> YES <input type="checkbox"/> NO = MEDEVAC!	
Mechanism of Injury: <i>What caused the injury?</i>			
Lat/Long (Datum WGS84) <i>Ex: N 40° 42.45' x W 123° 03.24'</i>			

4. SEVERITY OF EMERGENCY, TRANSPORT PRIORITY

SEVERITY	TRANSPORT PRIORITY
<input type="checkbox"/> URGENT-RED Life threatening injury or illness. <i>Ex: Unconscious, difficulty breathing, bleeding severely, 2° - 3° burns more than 4 palm sizes, heat stroke, disoriented.</i>	Ambulance or MEDEVAC helicopter. Evacuation need is IMMEDIATE.
<input type="checkbox"/> PRIORITY-YELLOW Serious Injury or illness. <i>Ex: Significant trauma, not able to walk, 2° - 3° burns not more than 1-2 palm sizes.</i>	Ambulance or consider air transport if at remote location. Evacuation may be DELAYED.
<input type="checkbox"/> ROUTINE-GREEN Not a life threatening injury or illness. <i>Ex: Sprains, strains, minor heat-related illness.</i>	Non-Emergency. Evacuation considered Routine of Convenience.

5. TRANSPORT PLAN:

Air Transport: (Agency Aircraft Preferred)

<input type="checkbox"/> Helispot	<input type="checkbox"/> Short-haul/Hoist	<input type="checkbox"/> Life Flight	<input type="checkbox"/> Other
-----------------------------------	---	--------------------------------------	--------------------------------

Ground Transport: Click here to enter text.

<input type="checkbox"/> Self-Extract	<input type="checkbox"/> Carry-Out	<input type="checkbox"/> Ambulance	<input type="checkbox"/> Other
---------------------------------------	------------------------------------	------------------------------------	--------------------------------

6. ADDITIONAL RESOURCE/EQUIPMENT NEEDS:

<input type="checkbox"/> Paramedic/EMT(s)	<input type="checkbox"/> Crew(s)	<input type="checkbox"/> SKED/Backboard/C-Collar
<input type="checkbox"/> Burn Sheet(s)	<input type="checkbox"/> Oxygen	<input type="checkbox"/> Trauma Bag
<input type="checkbox"/> Medication(s)	<input type="checkbox"/> IV/Fluid(s)	<input type="checkbox"/> Cardiac Monitor/AED
<input type="checkbox"/> Other (i.e. splints, rope rescue, wheeled litter)		

7. COMMUNICATIONS:

Function	Channel Name/Number	Receive (Rx)	Tone/NAC *	Transmit (Tx)	Tone/NAC *
<i>Ex: Command</i>	<i>Forest Rpt, Ch. 2</i>	<i>168.3250</i>	<i>110.9</i>	<i>171.4325</i>	<i>110.9</i>
COMMAND					
AIR-TO-GRND					
TACTICAL					

*(NAC for digital radio system)

8. EVACUATION LOCATION:

Lat/Long (Datum WGS84) <i>EX: N 40 42.45' x W 123 03.24'</i>	
Patient's ETA to Evacuation Location:	
Helispot/Extraction Size and Hazards:	

9. CONTINGENCY:

Considerations: If primary options fail, what actions can be implemented in conjunction with primary evacuation method? Be thinking ahead...

REMEMBER: Confirm ETA's of resources ordered
Act according to your level of training
Be Alert. Keep Calm. Think Clearly. Act Decisively.

Division - As Assigned	Area Location Capability	
All Branches, All Divisions	EMS Responders & Capability: REM 1	Rapid Extraction Module
	Equipment Available on Scene:	ALS/BLS supplies, Stokes, Wheeled Litter, Raising/Lowering System, etc.
	Medical Emergency Channel:	Command: CMD 1 168.1000 rx 170.4500 tx Tone 123.0 b/rx CMD 2 172.7000 rx 163.7625 tx Tone 123.0 b/rx Tactical: As Assigned CALCORD 156.0750 Tone 156.7

Mad River Rapid Extrication Module, call sign "REM 1"

The Rapid Extraction Module is comprised of Urban Search and Rescue (USAR) rope rescue technicians certified in high and low angle rescue. Some of the module capabilities include:

- Advanced Life Support (ALS) and Basic Life Support (BLS) providers and supplies
- Patient packaging for air or ground transport
- Backboards and patient stabilization equipment
- Stokes basket
- Wheeled litter for remote ground based extraction
- Over the side rescue and extraction
- Limited vehicle extrication
- Generator and lighting for nighttime operation

The REM Team is a shared resource across all branches and divisions on the Mad River Complex. Branch Directors will determine REM staging location(s) based on potential exposure and operational objectives with the concurrence of Operations. The REM team will be monitoring command for emergency deployment and a tactical frequency may be assigned as needed.

Tony Garcia	FEMP/THSP	Module Leader
Chris Gibbony	FEMP/THSP	Rigger
Charles Brown	FEMP/RS1-RS2	Rescuer
Ron Sandler	EMTP	Rescuer/HECM

Medical Incident Report

Timely and accurate reporting is the key to getting needed resources to a medical incident. Review the Medical Incident Reporting Procedures on p 107-109 of the 2014 IRPG. In addition, the attached QR links to the 6 Minutes for Safety on the Medical Incident report. Please take a moment to review this important information with your crew.



MAD RIVER COMPLEX
Human Resources Message
AUGUST 15, 2015

I would like to thank all of you for the mutual respect you are exhibiting on this incident. We all know how important it is to treat each other appropriately and with respect. Let's make sure we are serving as examples for each other.

Please exercise tolerance, show gratitude, practice compassion and exhibit leadership.

Just for today

- Do not have expectations about how you should be treated
- Be as friendly as you can to the people around you
- Do not insist that everything you do is perfect
- Be grateful for your health, your work, your family, your country

“Without belittling the courage with which men have died, we should not forget those acts of courage with which men have lived.

The courage of life is often a less dramatic spectacle than the courage of a final moment;

But it is no less a magnificent mixture of triumph and tragedy.

A man does what he must – in spite of personal consequences, in spite of obstacles and dangers and pressures –

And that is the basis of all human morality.”

-John F. Kennedy

Janine Summy, Human Resource Specialist

COME TO FINANCE

E-208 JW Morrison

E-227 Dillion Construction

E- 361 Kevin Trapp

O-280 Randy Shavlis

O-275 Robert Harvey

O-170 Daniel Prazak

O-171 Mark Ragan

O- 11 Kevin Sherretz

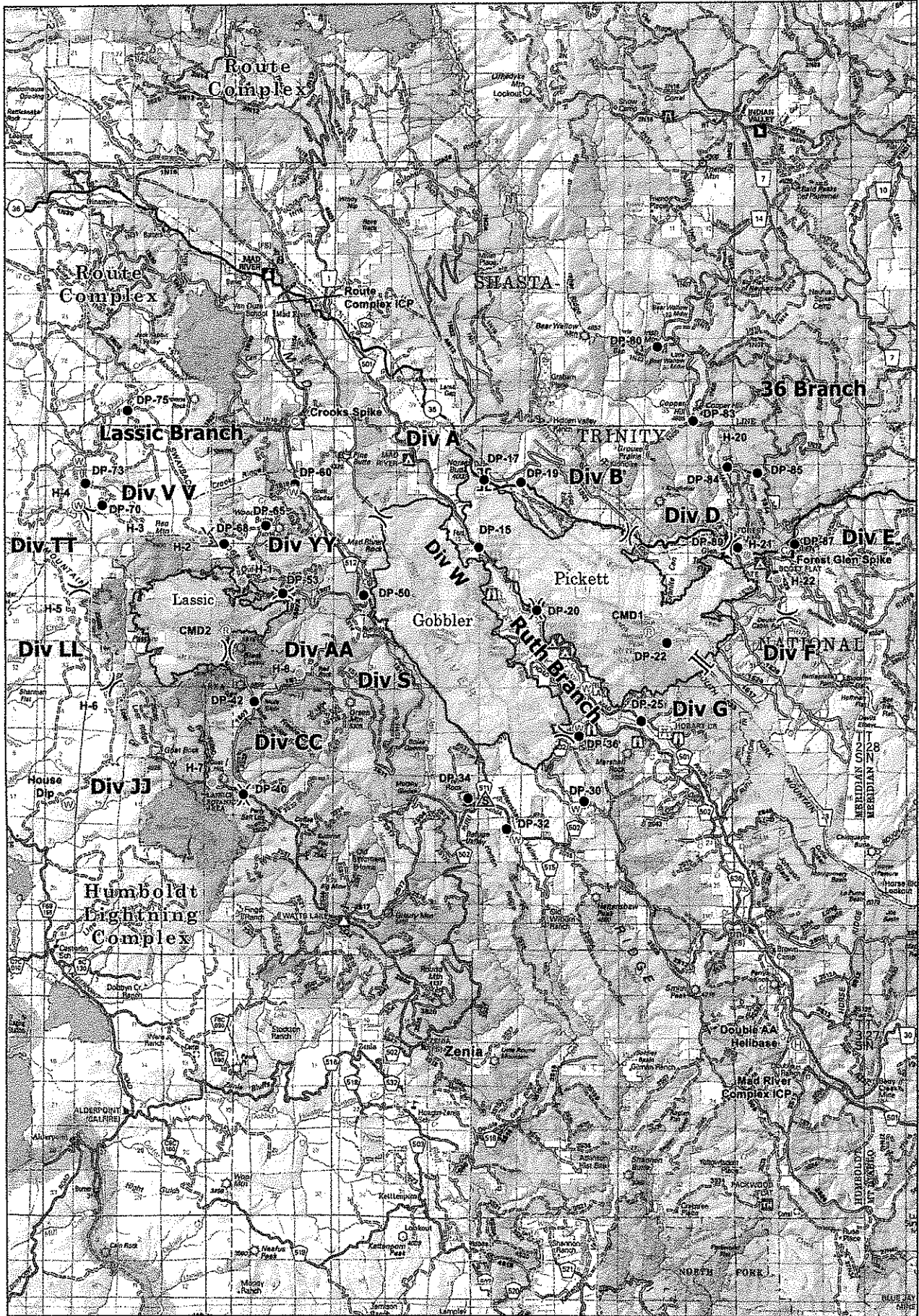
O- 295 Troy Maguire

O-391 Harold Kibbe



LASSICS LUPINE





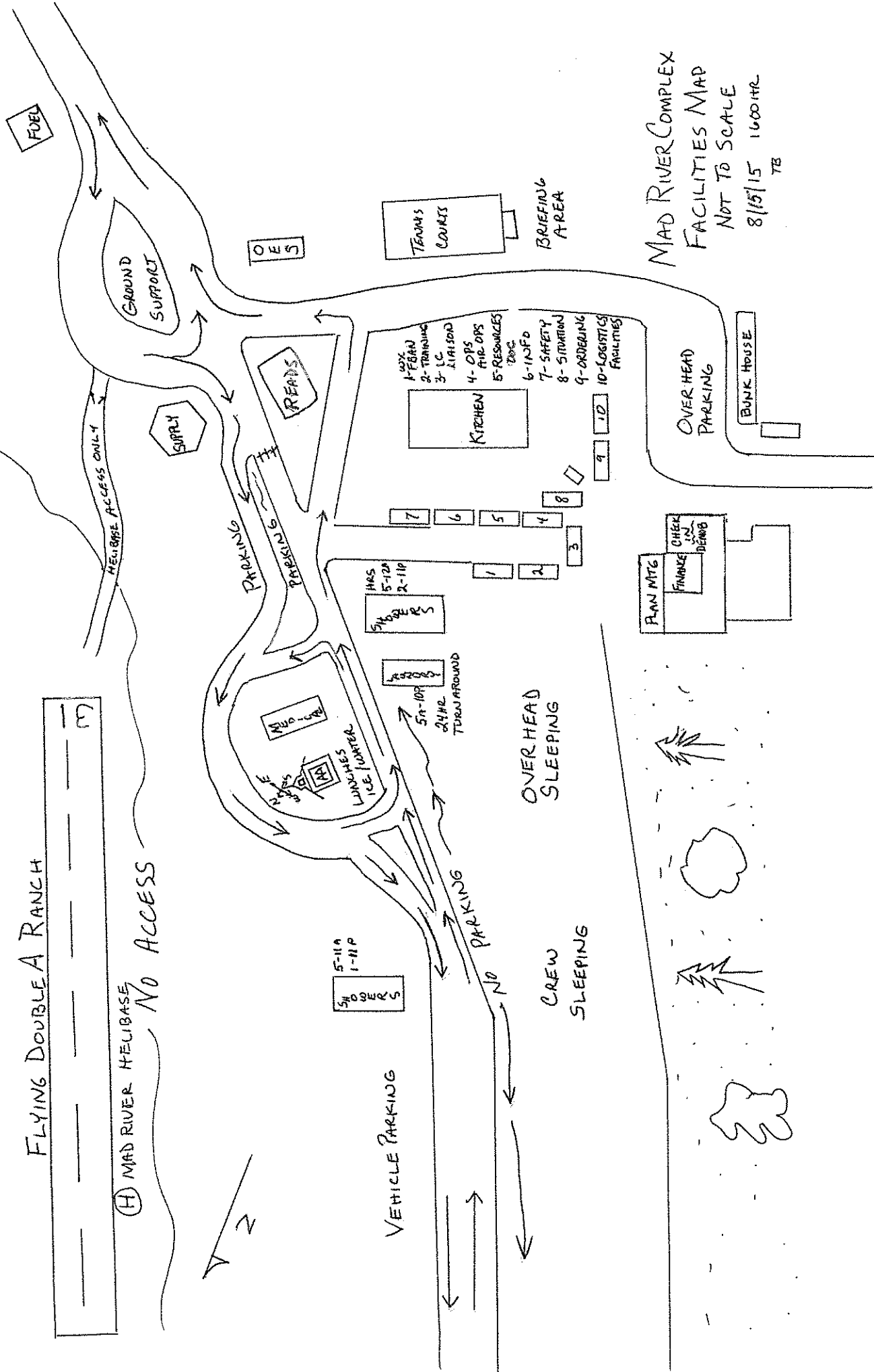
0 1 2 Miles
NAD 83, UTM Zone 10 N
Map Date: 8/13/2015; 2255 hrs.

- Division
- Branch
- Helispot
- Safety Zone
- Water Source
- Helibase
- Repeater
- ICP
- Camp
- Six Rivers/Shasta Trinity NF Administrative Boundaries
- Other Fire



FLYING DOUBLE A RANCH

(H) MAD RIVER HELIBASE NO ACCESS



MAD RIVER COMPLEX
 FACILITIES MAP
 NOT TO SCALE
 8/15/15 1600HRC
 TB

Current as of 11-Aug-15

Mad River Complex Phone List

First	Last	Number	FAX
Mad River Complex Hard Lines			
Communications		707- 574-6058	
Finance		707- 574-6246	574-6250
Check in / Demob		707- 574-6240	574-6242
Plans		707- 574-6230	
Medic		707- 574-6056	
Ordering		707- 574-6263/6191	574-6306
Logistics		707- 574-6063	
Info		707- 574-6289	
IC		707- 574-6094	
Air Ops		707- 574-6292	

Incident Issued Cell Phones

Tim	Baal	925-872-8547	PSC1
John	Badaracco	925-817-9943	GSUL
Lori	Bailey	925-407-7832	Transportation
Jacque	Beidl	925-407-6366	READ
Lewis	Brostrom	925-407-6360	FACL
Marie	Butler	925-588-6854	ORDM
Tom	Donohoe	925-588-6741	SOFR
Greg	Ely	925-872-8578	COML
Teresa	Fork	925-588-6109	Finance
Wally	Grogan	925-872-8559	Facilities UL
Scott	Hagerty	925-588-6845	Mad River
Christian	Johnson	925-407-5130	Chico CA
James	Jones	925-519-6314	BCMG
Steve	Kliest	925-817-9856	PIO Info
Jonathon	Lee	925-872-8557	Div S
Rick	Leuck	925-407-6361	PSC
Steve	Paes	925-872-8562	FBAN
Mark	Savage	925-872-8556	CIIMT5 Info
Carl	Schwope	925-588-6818	
Carl	Schwope	925-588-6818	Mad River
Tracy	Stelman	925-324-9456	Logistics
Larry	Stephens	925-407-7004	EQPM
Bob	Summerfield	925-872-8568	P101
Steve	Watkins	925-407-6352	Ful

