
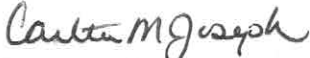



MAD RIVER COMPLEX

***CA-SRF-001433
P5J0JC (0510)***

***August 4th – 5th , 2015
NIGHT Operational Period
1800 - 0900***

INCIDENT OBJECTIVES	1. Incident Name Mad River Complex	2. Date 8/04/15	3. Time 0900									
4. Operational Period NIGHT 08/04 – 08/05/15 1800 - 0900												
5. General Control Objectives for the Incident (include alternatives) <u>Strategic Framework</u> Provide for aggressive fire suppression utilizing direct and indirect tactics and providing point protection to threatened structures within the fire area. Potential for continued fire spread is high due to fuels, weather and lack of available resources. The threat to life, property and values at risk remains high. <u>Leaders Intent</u> Provide the highest level of customer services to all involved with or impacted by the Mad River Complex. All incident assigned personnel should be prepared to take the appropriate actions regarding: <ul style="list-style-type: none"> • Personal interactions internal and external to the incident management organization • Personal safety and the safety of others • An incident-within-an-incident <u>Objectives</u> <ul style="list-style-type: none"> • Provide for Firefighter and Public safety through hazard recognition and application of the risk management process. • Reduce the threat to private property, residences, infrastructure and natural resources by using strategy and tactics with a high probability of success. • Engage in fire suppression operations that are cost effective, but commensurate with values at risk. • Protect wilderness values by ensuring Minimum Impact Suppression Tactics (MIST) are applied. 												
6. Weather Forecast for Period <ul style="list-style-type: none"> • The weather for day shift will be sunny then becoming partly cloudy. Maximum temperature is 87 to 90 degrees. Minimum humidity valleys 23 – 27 percent. 20 ft winds variable 1 to 3 MPH becoming West 2 – 5 MPH in the afternoon. 												
7. General Safety Message <ul style="list-style-type: none"> • Hazardous driving – NARROW SECTIONS OF HWY 36 • Hazard trees • Working on steep rough terrain 												
8. Attachments (mark if attached) <table border="0" style="width: 100%;"> <tr> <td><input checked="" type="checkbox"/> Organization List - ICS 203</td> <td><input checked="" type="checkbox"/> Medical Plan - ICS 206</td> <td><input checked="" type="checkbox"/> Safety Message</td> </tr> <tr> <td><input checked="" type="checkbox"/> Div. Assignment Lists - ICS 204</td> <td><input checked="" type="checkbox"/> Incident Map</td> <td><input checked="" type="checkbox"/> Air Ops Summary ICS 220</td> </tr> <tr> <td><input checked="" type="checkbox"/> Communications Plan - ICS 205</td> <td><input checked="" type="checkbox"/> Fire Weather Forecast</td> <td></td> </tr> </table>				<input checked="" type="checkbox"/> Organization List - ICS 203	<input checked="" type="checkbox"/> Medical Plan - ICS 206	<input checked="" type="checkbox"/> Safety Message	<input checked="" type="checkbox"/> Div. Assignment Lists - ICS 204	<input checked="" type="checkbox"/> Incident Map	<input checked="" type="checkbox"/> Air Ops Summary ICS 220	<input checked="" type="checkbox"/> Communications Plan - ICS 205	<input checked="" type="checkbox"/> Fire Weather Forecast	
<input checked="" type="checkbox"/> Organization List - ICS 203	<input checked="" type="checkbox"/> Medical Plan - ICS 206	<input checked="" type="checkbox"/> Safety Message										
<input checked="" type="checkbox"/> Div. Assignment Lists - ICS 204	<input checked="" type="checkbox"/> Incident Map	<input checked="" type="checkbox"/> Air Ops Summary ICS 220										
<input checked="" type="checkbox"/> Communications Plan - ICS 205	<input checked="" type="checkbox"/> Fire Weather Forecast											
9. Prepared by (Planning Section Chief) Tim Baal/ Dennis Cooper 	10. Approved by (Incident Commander) Carlton Joseph 											

ORGANIZATION ASSIGNMENT LIST (ICS-203)

1. Incident Name: MAD RIVER COMPLEX		2. Operational Period: NIGHT		Date From: 8/04/2015 Time From: 1800		Date To: 8/05/2015 Time To: 0900	
3. Incident Commander(s) and Command Staff:				7. Operations Section:			
Incident Commander	MIKE MINTON		Chief	LES CURTIS			
Deputy IC	CARLTON JOSEPH		Planning Ops	DON SMITH			
Safety Officer	MARTY HAMEL / DAVE MORTON / CHARLOTTE JORDAN (T)		Branch I				
Public Information Officer	STEVE KLIEST / MARK SAVAGE		Branch Director	COREY ROSE			
Liaison Officer	RICK ALPERT / FREDERICK FLORES		Division/Group				
			Division/Group				
			Division/Group				
			Division/Group				
			Division/Group				
			Division/Group				
4. Agency/Organization Representatives:				LASSIC Branch			
OES	JOHN SALVATE		Branch Director				
CHP	TAMI McCANLESS		Division/Group				
SOUTH TRINITY VFD	DON STEWART / BILL GERMAN		Division/Group				
TRINITY SO	JAKE HESS		Division/Group				
READ	SCOTT HAGERTY		Division/Group				
READ	RAYMA COOLEY		Branch IV				
5. Planning Section:				Division/Group			
Chief	TIM BAAL / RICK LEUCK (T)		Division/Group				
Deputy	DENNIS COOPER		Division/Group				
Resources Unit	ASHBY / SWITZLER / THOMPSON / MATYE		Division/Group				
Situation Unit	MIKE MC HARGUE / TAD MORLOCK DAVID SOLDAVINI (T)		Division/Group				
Demobilization Unit			Division/Group				
Human Resources			Division/Group				
Fire Behavior Analyst	DREW SMITH		Contingency / Staging				
GISS	EVAN CONKLIN / JASON DUKE (T)		Division/Group				
Training Specialist	ALLISON JACKSON		Division/Group				
IMET	MATT MEHLE						
6. Logistics Section:				Division/Group			
Chief	TONY MARTINEZ/ JIM ECKROTH (T) TERESA STELMAN (T)						
Deputy			Air Operations Branch				
Support Branch			Air Ops Branch Dir.				
Supply Unit	MIKE BRADFORD		Air Support Grp Supervisor		CRAIG DADO		
Ordering Unit			Air tactical Group Supervisor		MIKE STOUT		
Facilities Unit	WALLY GROGAN		8. Finance/Administration Section:				
Ground Support Unit	JOHN BADARACCO / FRED SIMONDS		Chief	THERESA FORK			
Service Branch			Deputy				
Director			Time Unit	JANICE BROWN			
Communications Unit	GREG ELY		Procurement Unit	CHRISTOPHER FORD			
Medical Unit	ROBERT RUSSELL		Comp/Claims Unit	ANNMARIE CARLSON			
Food Unit	EDWIN MAYBERRY		Cost Unit	ROGER SIEMERS			
9. Date/Time Prepared: 8/04/15 0900		Prepared By: ERIC MATYE, RESL			Signature: 		

Fire Weather Forecast

FORECAST NO: 1
PREDICTION FOR: NIGHT SHIFT
SHIFT DATE: Aug 4-5, 2015
TIME AND DATE
FORECAST ISSUED: Aug 4, 2015 1800 PDT

NAME OF FIRE: Mad River Complex
UNIT: Six Rivers NF
SIGNED: Matt Mehle *Matt Mehle*
Incident Meteorologist

WEATHER DISCUSSION: *A weak disturbance passing overhead will provide a slight chance for showers and thunderstorms early this evening. Best chance for storms will be north of the Mad River Complex. Otherwise...rather quiet weather night with decent humidity recoveries.*

WEATHER FORECAST FOR TUESDAY NIGHT:

WEATHER: A slight chance for showers/thunderstorm early this evening. Otherwise a few clouds overnight. Smoke settling into the canyons after 2200-0000.

TEMPERATURES: Min 50-58-F.

HUMIDITY: Max Valley bottom...85-95%; Ridges...75-75%.

20-FOOT WIND:

SLOPE/VALLEY - Upslope 2-5 with gusts to 7 mph in the evening...becoming downcanyon/downslope to less than 4 mph after 2200.

RIDGETOP - West 4 to 7 mph with gusts to 9 mph in the evening and early part of night...becoming variable less than 4 mph overnight.

INVERSIONS/STABILITY: Canyon inversions becoming establishing 2100-2200.

OUTLOOK FOR WEDNESDAY:

Mostly sunny with areas of smoke. Max Temps...82-92. Min RH...20-30%. Ridgetop wind: Variable 3 to 5 mph becoming west 4 to 8 mph with gusts to 10 mph in the afternoon. Slope/Valley wind: Light and variable in the morning becoming Upcanyon / Upslope 2 to 4 mph with gusts to 6 mph. Strongest in aligned drainages.

INVERSIONS/STABILITY: Canyon inversions lasting through 1100-1300 with smoke gradually lifting.

WEATHER FORECAST FOR WEDNESDAY NIGHT:

WEATHER: Mostly clear overnight. Smoke settling into the canyons after 2300-0000.

TEMPERATURES: Min 50-58-F.

HUMIDITY: Max Valley bottom...85-95%; Ridges...75-75%.

20-FOOT WIND:

SLOPE/VALLEY - Upslope 2-5 with gusts to 7 mph in the evening...becoming downcanyon/downslope to less than 4 mph after 2200.

RIDGETOP - West 4 to 7 mph with gusts to 9 mph in the evening and early part of night...becoming variable less than 4 mph overnight.

INVERSIONS/STABILITY: Canyon inversions becoming establishing 2100-2200.

EXTENDED FORECAST:

THURSDAY AND FRIDAY... Mostly sunny with areas of smoke. Slight chance of showers and thunderstorms Friday. Max temps...80s. Min temps 50s. Min RH 20-35%. West and southwest winds 5 to 15 mph. Strongest over ridges and upper slopes.

SUNSET: 8:25 PM **SUNRISE:** 6:15 AM

REALTIME RAWS INFO for MAD RIVER COMPLEX

Location-----	Name
Div A -	MAD RIVER
Div D -	FRIEND MTN
Div G -	RUTH



FIRE BEHAVIOR FORECAST

FORECAST NUMBER: 6	TYPE OF FIRE: Wildland Fire
FIRE NAME: Mad River Complex	OPERATIONAL PERIOD: Night
DATE / TIME ISSUED: 8/4/2015 1400 hrs	DATE: 8/4/2015 Tuesday
UNIT: Six Rivers NF / Mad River	SIGNED: _____ Drew Smith FBAN

INPUTS

WEATHER SUMMARY:

Night: Cloudy... Temps: around 55°

RH: = around 80% Eye level Wind = Down slope / Down valley 1-3mph.

LAL: 1CWR 0%

ERC= 53 Today...

GENERAL:

The fire is burning timber Fuels with some brush and grass intermix. Manzanita, Mixed Pine, Cedar and Douglas Fir are throughout. Live Fuel Moisture = Timber 150% Shrubs 80%. There is mortality in the aerial fuels that will contribute to torching

The fire to date has been primarily topography driven. The predominant factor of fire spread has been consistently surface fire spread backing, flanking transitioning to head fire alignment. Torching and short duration crown fire runs may develop with slope and wind alignment.. Low dead fuel moisture contents are the driver behind continuous fuel consumption. Past significant runs were with slope and wind alignment from thunderstorm winds. Sustained crown fire runs were dependent upon the surface fire and instability.

Rates of spread: head fire = 3-8ch/hr with backing 1-3 ch/hr.

With strong winds ROS of 25-40 ch/hr with head fire with crown involvement.

Spotting ½ mile...PIG = 75% during day ops

DFM = 10 hr = 5%100hr and 1000hr =10%

Fine fuel moisture will meet moisture of extinction. PIG = 10% after 2200 hrs.

SPECIFIC:

All Divisions:

Anticipate active nighttime burning tonight in the dead and down. Fire remained active today.

This is a topography dominated fire. The fires in the complex are mainly in backing alignment...Understory surface fire spread with backing and flanking fire is within the threshold of control for direct attack.

Tree torching can occur tonight heads up with this transition and slope alignment tree torching can trigger the fire to move thru the crown. There is enough dead standing fuels to promote torching on all flanks.

Look for the fire to transition to headfire alignment.....Remember the fire has a slow ros due to backing...Spotting from rollout can re align this fire to move rapidly with slope..

AIR OPERATIONS

Last light =May be limited due to smoke.

None after dark for suppression.

SAFETY

Fire ...activity can be active tonight.....

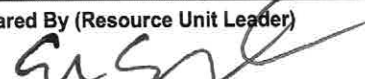

Validate your time to safety zones.... so know what you fire is doing at all times....

Identify when your fire has the ability re-position itself to run upslope with headfire.

Monitor fire activity when winds increase...fire has the ability to move down canyon today with spotting and rollout.

STOP.....Stop Think Observe and Predict...

Division/Group Assignment List (ICS 204 WF)

1. Incident Name:				3.			
MAD_RIVER_COMPLEX				Branch:		Division/Group: NIGHT	
2. Operational Period: NIGHT							
Date/Time From: 08/04/2015 1800 TUE		Date/Time To: 08/05/2015 0900 WED					
4. Operations Personnel							
OPERATIONS CHIEF		LES CURTIS		BRANCH DIRECTOR		COREY ROSE	
DIVISION/GROUP SUPERVISOR				AIR ATTACK SUPERVISOR			
5. Resources Assigned this Period							
Strike Team / Task Force / Resource Designator		LWD	Leader	Number Persons	Drop Off PT./Time	Pick Up PT./Time	
ENGINE S/T - T1 - OES 4804A							
ENGINE S/T - T3 - XSC 2311C							
ENGINE - T4 - CENTRAL WILDFIRE							
ENGINE - T6 - SMITHFIELD FD - B40							
ENGINE - T6 - NORTH LOGAN FD - BRUSH 120							
ENGINE - T6 - LOGAN FD - E-670							
ENGINE - T6 - PACIFIC HABITAT							
6. Control Operations/Work Assignments:							
Patrol and secure fire line adjacent to structures in the Ruth Lake Community, Van Duzen Road and 01S06 Road in the fire area. Utilize available / qualified resources to remove fallen trees adjacent to roadways / access roads in the fire area.							
7. Special Instructions:							
Mop-up as appropriate along roadways and around structures in Ruth Lake Community.							
8. Division/Group Communication Summary							
Function	Channel	RX Frequency N/W	RX Tone/NAC	TX Frequency N/W	TX Tone/NAC	Mode	
COMMAND	1	168.1000	0.0	170.4500	123.0	A	
TACTICAL	4	166.5500	0.0	166.5500	0.0	A	
AIR TO GROUND CMD	14	169.1500	0.0	169.1500	0.0	A	
9. Prepared By (Resource Unit Leader)				Approved By (Planning Section Chief)		Date	Time
						08/04/2015	0930

SAFETY MESSAGE

MAD RIVER COMPLEX

08/04-05/2015 TUESDAY Night Shift 1800-0900

INCIDENT HAZARDS

DRIVING:

- Roads in the incident area are characteristically steep, sometimes very narrow, with very tight curves in places.
- Wildlife (deer, etc.) are common on roadways, especially at dusk and dawn. Livestock is also seen on the local roads.
- The road surfaces are mostly in good condition which tends to facilitate higher speeds by both locals and incident personnel.

SNAGS: There are numerous snags as well as fire damaged trees and trees with widow-makers throughout the incident. Maintain strong situational awareness for snag issues in your work area at all times. Look up, look down, and around. Be especially alert if the wind picks up. When falling operations are in progress, keep non-essential personnel at least 2 ½ tree lengths away from the activity.

SNAKES AND POISONOUS INSECTS: Rattlesnakes are common in this area and are seen both on ridgetops and in drainages. Look closely before you reach down to pick up something. Black widows and brown recluses are also present.

CUMULATIVE FATIGUE: This is an active fire season with folks working long hours on back-to-back assignments. This can lead to serious cumulative fatigue. Monitor yourself, your subordinates, and others for fatigue. Take frequent short rest breaks, eat balanced meals, get as much quality sleep as possible, stay hydrated.

.....X.....X.....X.....X.....X.....X.....X.....X.....X.....X.....X.....X.....X.....X.....X.....

Top Driving Mistakes

- 1. Multi-tasking While Driving:** When You Turn the Car On, Turn the Gadgets Off. No matter how busy your day is, when you're on the road, focus only on driving. Catch up on other activities later and avoid unnecessary accidents.
- 2. Following Too Closely:** One Thousand One, One Thousand Two, One Thousand Three. Leave a three-second cushion between you and the vehicle ahead – it could save your bumper and your life. Make sure to double or triple that time when the weather is bad, visibility reduced, the road conditions rough, or pavement is slick.
- 3. Backing Up:** Objects in the mirror are closer than they appear. Your mirrors have a margin of error; don't rely on them alone. Look over your shoulder before backing up. Use a spotter. Get out and look around to determine extent of danger zones, uneven ground or obstacles
- 5. Failure to Yield on a Left-Hand Turn -** Check the Flow Before You Go. Look at the road you are turning into to make sure that no vehicles or pedestrians are in your path

Safety Officers: Marty Hamel, Charlotte Jordan, and Dave Morton



ALL DIV	Hazard Trees	<ul style="list-style-type: none"> ~ Follow "Hazard Tree Safety" guidelines, IRPG (2014) page 22&23 ~ Post lookouts, or use a spotter in mop-up areas with personnel ~ Don't park vehicles or take breaks in high concentrations of hazard trees ~ Establish trigger points for disengagement during high wind events ~ Post road guards when appropriate ~ Do not fall snags at night
ALL DIV	Driving and Traffic	<ul style="list-style-type: none"> ~ Practice "Defensive Driving" techniques traveling on all roads , mitigation strategy includes: <ul style="list-style-type: none"> ~ Use spotters when backing ~ Honk horn to alert personnel when backing ~ Always use headlights ~ Yield to pedestrians ~ Observe posted speed limits ~ Drive slow, be cautious for opposing traffic that may be in your lane ~ Watch out on narrow, winding roads that may have steep drop offs ~ Follow 3 second rule of following distance when driving ~ Use chock blocks, turn wheels into hill ~ Seat Belts are mandatory ~ No texting while driving ~ Watch out for wildlife on all roads during day or night . Be prepared for quick, unexpected stops.
DIV A/D	Power Utilities and Gas Lines	<ul style="list-style-type: none"> ~ Notify all personnel of down electrical lines. ~ Refer to the IRPG pages 24-25 for Power Line Safety ~ Always treat downed wires as energized ~ Identify and avoid high tension transmission lines. ~ Identify and avoid high pressure natural gas lines ~ Identify and avoid damaged gas service near structures ~ Be aware of utility restoration in your work area
ALL DIV	Potential for Extreme Fire Behavior	<ul style="list-style-type: none"> ~ Share weather observations with all personnel assigned to division ~ Establish "Decision Points" to withdraw ~ Use "Risk Management" process prior to engaging in suppression actions, refer to page 1, IRPG (2014) ~ Review "Severe fire behavior potential" (IRPG 68) ~ Maintain adequate escape routes and safety zones and continue to re-evaluate throughout the shift ~ Maintain situational awareness ~ Factor in drought conditions and local ERC prior to operations ~ Base all actions on past, current and expected behavior of the fire
ALL DIV	Fireline Hazards	<ul style="list-style-type: none"> ~ Do not work directly above or below personnel during mop-up operations ~ Watch for falling and rolling debris on steep slopes ~ Alert crew personnel of rolling debris by yelling to affected individuals~ Position debris that could roll vertically on slope ~ Watch for weakened trees that may pose danger or fall ~ Scout areas for mop up prior to work ~ Identify burning stumps that have roots affected by fire and may cave in ~ Wear appropriate PPE correctly ~ Use correct tool for task assignment
ALL DIV	Wildlife & Livestock	<ul style="list-style-type: none"> ~ Watch for wildlife & livestock inside fire area and along roadways. ~ Be prepared for quick, unexpected stops.
ALL DIV	Fatigue & Overexertion	<ul style="list-style-type: none"> ~ Drink 1 quart of water each hour during and after work ~ Rotate crews out of smoky areas ~ Set a reasonable work pace and allow adequate rest breaks while on the project ~ Stagger work crews start time to limit fatigue ~ Use buddy system to monitor personnel of heat related and fatigue issues ~ Follow work / rest guidelines

DIV A,D,G,W,S	Night Operations	<ul style="list-style-type: none"> ~ Maintain high visibility in work area and wear vest while in roadway. ~ Use glow sticks to mark hazards. ~ Ensure personnel have a personal light (headlamp) ~ Watch for signs of fatigue ~ Take breaks away from areas of known hazard
ALL DIV	Heat Related Illness (HRI)& Dehydration	<ul style="list-style-type: none"> ~ Drink Fluids throughout operational period ~ Carry extra water on line and cache water at drop points ~ Take Frequent breaks, minimum of 10 minutes every hour ~ Recognize symptoms of HEAT RELATED ILLNESS which include <ul style="list-style-type: none"> o Lack of energy o Headaches, dizziness o Lack of rest o No hunger, poor eating habits o Hot skin, and lack of sweating
ALL DIV	Marijuana Plantations	<ul style="list-style-type: none"> ~ When discovered leave area quietly the same direction that you entered and notify DIVS ~ Watch for hazardous materials ~ Be aware of possible traps that may be set ~ Use extreme caution in grow area , individuals may be armed ~ If grower is confrontational, maintain calm demeanor and leave area
ALL DIV	Rattlesnakes	<ul style="list-style-type: none"> ~ Watch out for Rattlesnakes in drainages and ridgetops ~ Wear proper PPE ~ Use caution when rolling over logs or moving rocks ~ Walk around the area to avoid snake ~ Snakes will strike if threatened ~ Use caution in rocky areas where snake dens may be found
ALL DIV	Communications	<ul style="list-style-type: none"> ~ Maintain communication with aviation resources, and suppression organization. ~ Ensure all know frequency and protocol for contacting resources ~ Utilize the ICS 205 and 204
DIV A,D,G,W,S,	Firing Operations & Devices	<ul style="list-style-type: none"> ~ Only personnel trained in the use of each device will be authorized to use firing equipment. ~ Ensure all personnel are aware of firing operation that may affect them. ~ Wear appropriate PPE. ~ Ensure aerial/ground ignition plans have been adequately developed and personnel are briefed.
ALL DIV	Environmental Hazards	<ul style="list-style-type: none"> ~ Be alert for snakes, watch footing and hand placement around rocks ~ Check yourself for ticks, watch for bees and other insects that bite or sting ~ Be alert for bears, cougars, and other wildlife ~ Poisonous plants - identify plants and avoid; Change and wash clothing and shower frequently
ALL DIV	Steep Terrain and Rolling Debris	<ul style="list-style-type: none"> ~ Maintain 8' -10' spacing when working & walking ~ Don't work directly above personnel ~ Evaluate necessity to send personnel in areas with limited access ~ Maintain Situational Awareness by identifying hazards and making them known to all

INCIDENT RADIO COMMUNICATIONS PLAN		Incident Name		Date/Time Prepared		Operational Period Date/Time			
COMMUNICATIONS PLAN		Mad River Complex SRF-001433		8/4/15, 1300 hrs		NIGHT 8/4-8/5/15, 1800-0900			
Zn / Ch	Function	Channel Name/Trunked Talkgroup	Assignment	RX Freq	RX Tone/NAC	TX Freq	TX Tone/NAC	Mode A, D, M	Remarks
1	Command	NIFC C2	All Divisions	168.1000	0.0	170.4500	123.0	A	Tone 2
2	Command	NIFC C9	Not Deployd	170.0125	0.0	165.2500	123.0	A	Tone 2
3	Command		Future use						
4	Tactical	R5 T4	Div. A/D / NIGHT	166.5500	0.0	166.5500	0.0	A	
5	Tactical	R5 T6	Lassic/ Div. G	168.2375	0.0	168.2375	0.0	A	
6	Tactical	NIFC T5	Div. S	166.7250	0.0	166.7250	0.0	A	
7	Tactical	NIFC T6	Div. W	166.7750	0.0	166.7750	0.0	A	
8	Tactical	NIFC T7	Ruth Lake SPG	168.2500	0.0	168.2500	0.0	A	
9	Tactical	VTAC 14	unassigned	159.4725	156.7	159.4725	156.7	A	Tone 6
10	Tactical	VFIRE 25	unassigned	154.2875	156.7	154.2875	156.7	A	Tone 6
11	Tactical	VFIRE 26	unassigned	154.3025	156.7	154.3025	156.7	A	Tone 6
12	Dispatch	SRF-2 FN	IA & Emergency Backup	168.7250	0.0	170.1250	103.5	A	Tone 8: Local Dispatch - IA and emergency backup
13	Tactical	CALCORD	Medical	156.0750	156.7	156.0750	156.7	A	Medical Evac - Tone 6
14	Air - Ground CMD	A-G 1	All Divisions	169.1500	0.0	169.1500	0.0	A	
15	Air - Ground TAC	N/A	N/A		0.0		0.0	A	
16	Emergency only	GUARD	All Divisions	168.6250	0.0	168.6250	110.9	A	AIR GUARD - emerg. use only-Tone 1
17									
18									
19									
20	Emergency only	GUARD	All Divisions	168.6250	0.0	168.6250	110.9	A	AIR GUARD - emerg. use only -Tone 1

Prepared By (Communications Unit Leader)

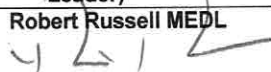

Greg Ely, COML

Deviation is assumed to be narrow band unless otherwise noted in the remarks. Mode refers to either "A" (analog), "D" (digital) or "M" (mixed mode).

Incident Location
 County Trinity Latitude, Longitude N 40 12.334, W 123 17.844

1/14/14 v.5

MEDICAL PLAN

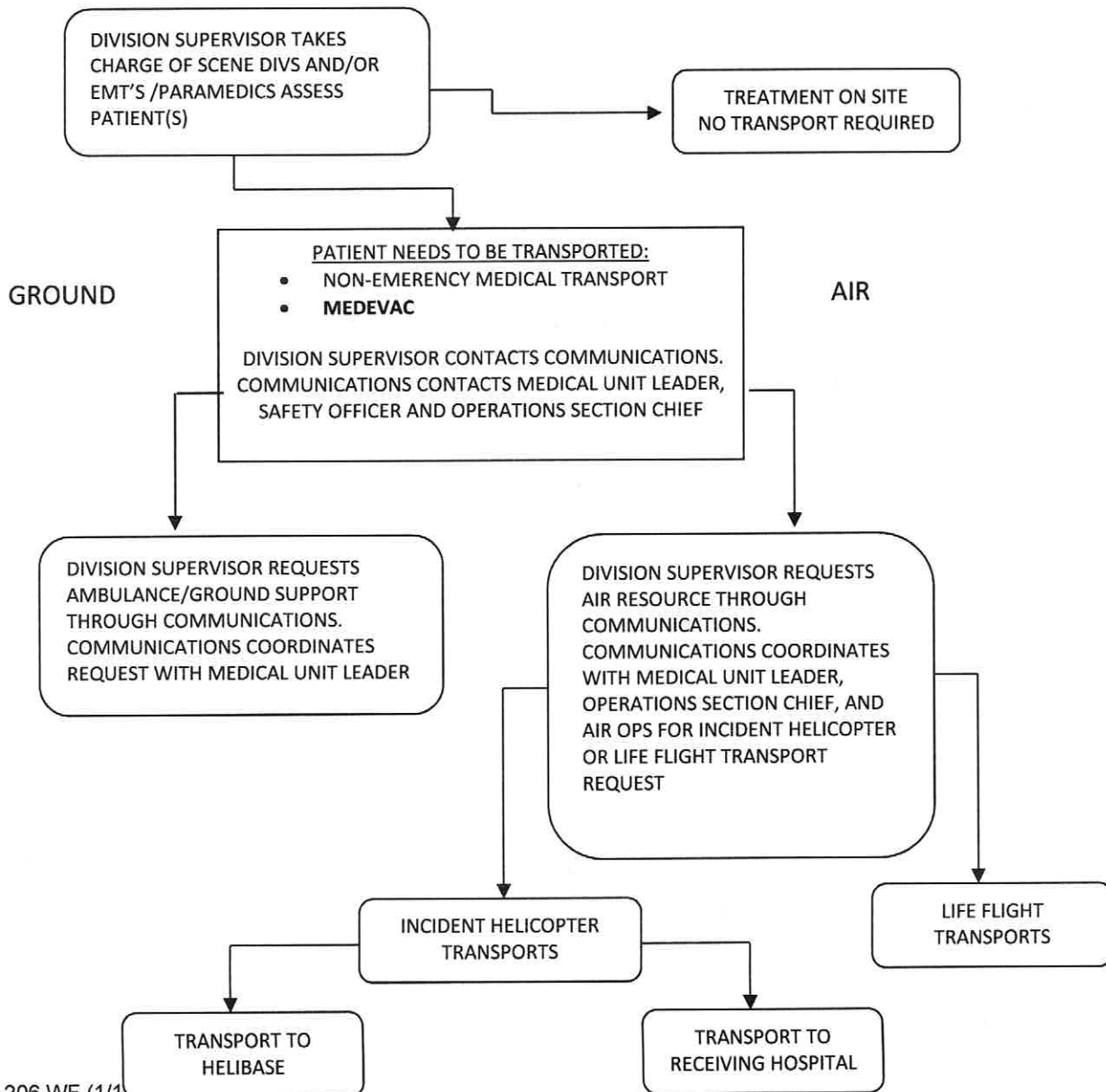
1. Incident/Project Name				2. Operational Period			
Mad River Complex				Date/Time 08/04-05/2015 - 1800-0900			
2. Aid Station							
Name	Complete Address	Phone & EMS Frequency		Advanced Life Support (ALS) Yes No			
Frontline Medical	Mad River ICP Flying AA Ranch Ruth Lake, CA	530-927-8133		XX			
3. Ambulance Services							
Name	Complete Address	Phone & EMS Frequency		Advanced Life Support (ALS) Yes No			
Trinity County Life Support Medic 305	Mad River ICP	530-623-2500		XX			
Southern Area Trinity Rescue	153 A Van Duzen Rd. Mad River, CA	707-574-6421		XX			
4. Air Ambulance Services							
Name	Phone	Type of Aircraft & Capability					
CAL FIRE H102 Day Hoist	707-726-1268	B205A++ Hoist					
CHP H14/H16 Day Hoist	530-242-3210	A Star B3 Hoist					
CA ANG Guard 825 North Ops Hoist/Extraction Helo	530-243-1434	H60 (Blackhawk) NVG/Hoist					
PHI Med 43/REACH	800-597-9571	EC 135 IFR/NVG B407 NVG					
5. Hospitals							
Name Complete Address	GPS Datum – NAD 83 Coordinate Standard Degrees Decimal Minutes DD° MM.MMM' N - Lat DD° MM.MMM' W - Long	Travel Time Air	Gnd	Phone	Helipad Yes	No	Level of Care Facility
St Joseph Hospital 2700 Dolbeer St Eureka, CA 95501	Lat: N 40 47.02 Long: W 124 23.67 VHF:	20 Min	2.5 HRS	707-269-4250 707-442-8646	<input checked="" type="checkbox"/>	<input type="checkbox"/>	Level II Trauma Center
Shasta Regional Medical Center 110 Butte St. Redding, CA 9600	Lat: N 40 35.18 Long: W122 23.13 VHF:	30 Min	3 HRS	530-244-5353 530-243-4042	<input checked="" type="checkbox"/>	<input type="checkbox"/>	
Redwood Memorial Hospital 3300 Renner Dr. Fortuna, CA 95540	Lat: Long: VHF:		2.5 HRS	707-725-3361	<input type="checkbox"/>	<input checked="" type="checkbox"/>	
Mercy Medical Center 2175 Rosaline Redding, CA 96001	Lat: N 40 34.29 Long: W 122 23.67 VHF:	30 Min	3 HRS	530-225-7201 530-242-4401	<input checked="" type="checkbox"/>	<input type="checkbox"/>	
UC Davis Medical Center 2315 Stockton Blvd Sacramento, CA 95817	Lat: N 38 33.17 Long: W 121 27.05 VHF:	1.5 HRS	5 HRS	916-734-3790 916-734-5669	<input type="checkbox"/>	<input checked="" type="checkbox"/>	Level I Trauma Center Burn Center
6. Prepared By (Medical Unit Leader)							
7. Date/Time		8. Reviewed By (Safety Officer)			9. Date/Time		
Robert Russell MEDL 		08/04/2015 1200		Marty Hamel SOF1 		08/04/2015 1200	

Initiate care with available resources at scene and notify DIVS when an injury occurs.

The DIVS, or designee, shall coordinate the incident and direct necessary actions. Take the following actions:

1. Determine the nature of the emergency.
2. If the emergency is a medical injury/illness, determine if the injury/illness is life threatening.
3. If the injury is life threatening, then clear designated frequency for emergency traffic.
4. Identify the on-scene point of contact by position.
5. Contact the Medical Unit Leader immediately.
6. Identify number injured, patient assessment(s) and location (geographic and/or GPS coordinates).
7. Identify on-scene medical personnel by position and last name (i.e. EMT Jones).
8. Identify preferred method of patient transport.
9. Determine any additional resources or equipment needed.

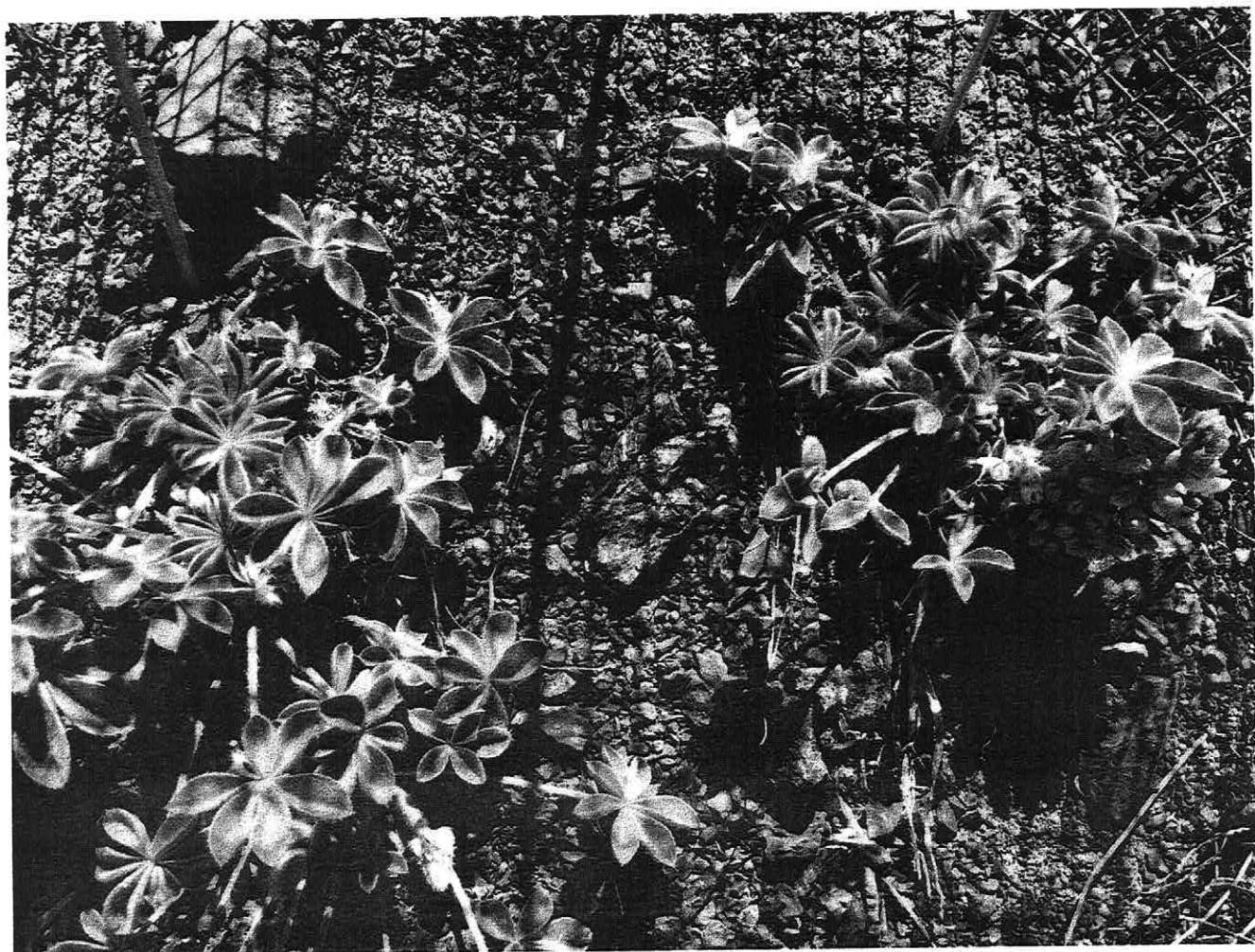
Continually evaluate the Evacuation Plan, develop contingencies in the event the first plan is not effective.



Medical Incident Report					
FOR ALL MEDICAL EMERGENCIES: IDENTIFY ON SCENE INCIDENT COMMANDER BY NAME AND POSITION AND ANNOUNCE "MEDICAL EMERGENCY" TO INITIATE RESPONSE FROM IMT COMMUNICATIONS/DISPATCH.					
Use items one through nine to communicate situation to communications/dispatch.					
1. CONTACT COMMUNICATIONS/DISPATCH <i>Ex: "Communications, Div. Alpha. Stand-by for Priority Medical Incident Report." (If life threatening request designated frequency be cleared for emergency traffic.)</i>					
2. INCIDENT STATUS: <i>Provide incident summary and command structure.</i>					
Nature of Injury/Illness			<i>Describe the injury (Ex: Broken leg with bleeding)</i>		
Incident Name			<i>Geographic Name + "Medical" (Ex: Trout Meadow Medical)</i>		
Incident Commander			<i>Name of IC</i>		
Patient Care			<i>Name of Care Provider (Ex: EMT Smith)</i>		
3. INITIAL PATIENT ASSESSMENT: <i>Complete this section for each patient. This is only a brief, initial assessment. Provide additional patient info after completing this 9 Line Report.</i>					
Number of Patients:	Male / Female	Age:	Weight:		
Conscious? <input type="checkbox"/> YES <input type="checkbox"/> NO = MEDEVAC!					
Breathing? <input type="checkbox"/> YES <input type="checkbox"/> NO = MEDEVAC!					
Mechanism of Injury: <i>What caused the injury?</i>					
Lat/Long (Datum WGS84) <i>Ex: N 40° 42.45' x W 123° 03.24'</i>					
4. SEVERITY OF EMERGENCY, TRANSPORT PRIORITY					
SEVERITY			TRANSPORT PRIORITY		
<input type="checkbox"/> URGENT-RED Life threatening injury or illness. <i>Ex: Unconscious, difficulty breathing, bleeding severely, 2° – 3° burns more than 4 palm sizes, heat stroke, disoriented.</i>			Ambulance or MEDEVAC helicopter. Evacuation need is IMMEDIATE.		
<input type="checkbox"/> PRIORITY-YELLOW Serious Injury or illness. <i>Ex: Significant trauma, not able to walk, 2° – 3° burns not more than 1-2 palm sizes.</i>			Ambulance or consider air transport if at remote location. Evacuation may be DELAYED.		
<input type="checkbox"/> ROUTINE-GREEN Not a life threatening injury or illness. <i>Ex: Sprains, strains, minor heat-related illness.</i>			Non-Emergency. Evacuation considered Routine of Convenience.		
5. TRANSPORT PLAN:					
Air Transport: (Agency Aircraft Preferred)					
<input type="checkbox"/> Helispot		<input type="checkbox"/> Short-haul/Hoist		<input type="checkbox"/> Life Flight	<input type="checkbox"/> Other
Ground Transport: <i>Click here to enter text.</i>					
<input type="checkbox"/> Self-Extract		<input type="checkbox"/> Carry-Out		<input type="checkbox"/> Ambulance	<input type="checkbox"/> Other
6. ADDITIONAL RESOURCE/EQUIPMENT NEEDS:					
<input type="checkbox"/> Paramedic/EMT(s)		<input type="checkbox"/> Crew(s)		<input type="checkbox"/> SKED/Backboard/C-Collar	
<input type="checkbox"/> Burn Sheet(s)		<input type="checkbox"/> Oxygen		<input type="checkbox"/> Trauma Bag	
<input type="checkbox"/> Medication(s)		<input type="checkbox"/> IV/Fluid(s)		<input type="checkbox"/> Cardiac Monitor/AED	
<input type="checkbox"/> Other (i.e. splints, rope rescue, wheeled litter)					
7. COMMUNICATIONS:					
Function	Channel Name/Number	Receive (Rx)	Tone/NAC *	Transmit (Tx)	Tone/NAC *
<i>Ex: Command</i>	<i>Forest Rpt, Ch. 2</i>	<i>168.3250</i>	<i>110.9</i>	<i>171.4325</i>	<i>110.9</i>
COMMAND					
AIR-TO-GRND					
TACTICAL					
*(NAC for digital radio system)					
8. EVACUATION LOCATION:					
Lat/Long (Datum WGS84) <i>EX: N 40 42.45' x W 123 03.24'</i>					
Patient's ETA to Evacuation Location:					
Helispot/Extraction Size and Hazards:					
9. CONTINGENCY:					
Considerations: <i>If primary options fail, what actions can be implemented in conjunction with primary evacuation method? Be thinking ahead...</i>				REMEMBER: Confirm ETA's of resources ordered Act according to your level of training Be Alert. Keep Calm. Think Clearly. Act Decisively.	

PLEASE SEE FINANCE

O-26	ABBOT, GEORGE
O-49	BROWN, HAROLD
O-34	BRYANT, BILL
O-65.51	BUTLER, VIOLET
O-44	FEEMAN, JASON
O-31	FOLEY, JOHN
O-17	LANG, ANDREW
O-52	MILLER, SARA
O-59	MIZELL, STEPHEN
O-33	MEURTSSEN, PETE
O-60	NEISWONGER, ERIC
O-18	NOLAN, ERIC
O-43	SCHLOSBERG, ANDREWS
O-46	WATTERS, JUSTIN
O-65.66	SMITH, RON
O-65.48	SOLDAVINI, DAVID
E-36	ST 5650C
E-4	TONTO
E-16	LONE PEAK
C-1	FT. APACHE
C-3	NORTH PACIFIC FORESTRY
C-4	NORTH PACIFIC FORESTRY
C-5	NORTH PACIFIC FORESTRY



LASSICS LUPINE



MAD RIVER COMPLEX
FACILITIES MAP

8/14/15 NOT TO SCALE

TB

