

MAD RIVER COMPLEX

CA-SRF-001433


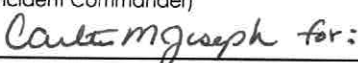
P5J0JC (0510)



August 6-7, 2015

NIGHT Operational Period

1800 - 0900

INCIDENT OBJECTIVES	1. Incident Name Mad River Complex	2. Date 8/06/15	3. Time 1300
4. Operational Period NIGHT 08/06-07/15 1800 - 0900			
5. General Control Objectives for the Incident (include alternatives) <u>Strategic Framework</u> Provide for aggressive fire suppression utilizing direct and indirect tactics and providing point protection to threatened structures within the fire area. The threat to life, property and values at risk remains high. Tactics which reflect limited firefighting resources on hand and utilizing existing control features in areas with a high probability of success should be applied. Potential for continued fire spread is high due to fuels, weather and time of season. <u>Leaders Intent</u> Provide the highest level of customer services to all involved with or impacted by the Mad River Complex. All incident assigned personnel should be prepared to take the appropriate actions regarding: <ul style="list-style-type: none"> • Personal interactions internal and external to the incident management organization • Personal safety and the safety of others • Response to any incident-within-an-incident <u>Objectives</u> <ul style="list-style-type: none"> • Provide for Firefighter and Public safety through hazard recognition and application of the risk management process. • Reduce the threat to private property, residences and infrastructure through the application of direct suppression tactics. • Protect natural resources through utilization of control features that offer a high probability of success. • Engage in fire suppression operations that are cost effective, but commensurate with values at risk. • Protect wilderness values and botanical resources by ensuring Minimum Impact Suppression Tactics (MIST) are applied. 			
6. Weather Forecast for Period <ul style="list-style-type: none"> • WEATHER: Partly cloudy with a slight chance for thunderstorms (15%). Best chc south and east of Mad River Complex. Smoke settling into the canyons after 2200-0000. • TEMPERATURES: Min 50-58-F. • HUMIDITY: Max Valley bottom...85-95%; Ridges...55-75%. • 20-FOOT WIND: • SLOPE/VALLEY - Upslope 2-5 with gusts to 7 mph in the evening...becoming down canyon/downslope to less than 4 mph after 2200. • RIDGETOP - West 4 to 7 mph with gusts to 9 mph in the evening and early part of night...becoming variable less than 4 mph overnight. • INVERSIONS/STABILITY: Canyon inversions becoming establishing 2100-2200. 			
7. General Safety Message <ul style="list-style-type: none"> • Hazardous driving – NARROW SECTIONS OF HWY 36 – 30 MPH MAX • Be alert for hazard trees and wildlife • Working on steep rough terrain 			
8. Attachments (mark if attached)			
<input checked="" type="checkbox"/> Organization List - ICS 203	<input checked="" type="checkbox"/> Medical Plan - ICS 206	<input checked="" type="checkbox"/> Safety Message	
<input checked="" type="checkbox"/> Div. Assignment Lists - ICS 204	<input checked="" type="checkbox"/> Incident Map	<input checked="" type="checkbox"/> Air Ops Summary ICS 220	
<input checked="" type="checkbox"/> Communications Plan - ICS 205	<input checked="" type="checkbox"/> Fire Weather Forecast	<input checked="" type="checkbox"/> Base Camp Map	
<input checked="" type="checkbox"/> READ Message	<input checked="" type="checkbox"/> ICS 214	<input checked="" type="checkbox"/> Fire Behavior	
9. Prepared by (Planning Section Chief) Tim Baal/ Dennis Cooper 		10. Approved by (Incident Commander) Mike Minton  for:	

ORGANIZATION ASSIGNMENT LIST (ICS-203)

1. Incident Name: MAD RIVER COMPLEX		2. Operational Period: NIGHT		Date From: 8/06/2015 Time From: 1800		Date To: 8/07/2015 Time To: 0900	
3. Incident Commander(s) and Command Staff:				7. Operations Section:			
Incident Commander	MIKE MINTON		Chief	LES CURTIS			
Deputy IC	CARLTON JOSEPH		Planning Ops	DON SMITH			
Safety Officer	MARTY HAMEL / DAVE MORTON / CHARLOTTE JORDAN (T)		36/Ruth Branch				
Public Information Officer	STEVE KLIEST / MARK SAVAGE		Branch Director	COREY ROSE			
Liaison Officer	RICK ALPERT / FREDERICK FLORES		Division/Group	A/D/G	JORDAN MCKNIGHT		
			Division/Group	S/W	ALAN HUSKINS		
			Division/Group	B/F/Forest Glen SPG	UNSTAFFED		
			Division/Group	Ruth Lake SPG	UNSTAFFED		
			Division/Group				
4. Agency/Organization Representatives:				LASSIC Branch			
OES	GARY HUMPHREY		Branch Director				
CHP	TAMI McCANLESS		Division/Group	UNSTAFFED			
SOUTH TRINITY VFD	DON STEWART / BILL GERMAN		Division/Group				
TRINITY SO	JAKE HESS		Division/Group				
READ	SCOTT HAGERTY		Division/Group				
READ	RAYMA COOLEY		Branch IV				
5. Planning Section:				Division/Group			
Chief	TIM BAAL / RICK LEUCK (T)		Division/Group				
Deputy	DENNIS COOPER		Division/Group				
Resources Unit	ASHBY / SWITZLER / THOMPSON / MATYE		Division/Group				
Situation Unit	MIKE Mc HARGUE / TAD MORLOCK DAVID SOLDAVINI (T)		Division/Group				
Demobilization Unit			Division/Group				
Human Resources			Division/Group				
Fire Behavior Analyst	STEVE PAES		Contingency / Staging				
GISS	EVAN CONKLIN / JASON DUKE (T) / MELISSA VARGAS		Division/Group				
Training Specialist	ALLISON JACKSON		Division/Group				
IMET	MATT MEHLE						
6. Logistics Section:				Division/Group			
Chief	TONY MARTINEZ/ JIM ECKROTH (T) TERESA STELMAN (T)						
Deputy			Air Operations Branch				
Support Branch				Air Ops Branch Dir.	JOHN KEESEE		
Supply Unit	MIKE BRADFORD		Air Support Grp Supervisor	CRAIG DADO			
Ordering Unit	MARIE BUTLER		Air tactical Group Supervisor	MIKE STOUT			
Facilities Unit	WALLY GROGAN		8. Finance/Administration Section:				
Ground Support Unit	JOHN BADARACCO / FRED SIMONDS		Chief	THERESA FORK			
Service Branch				Deputy			
Communications Unit	GREG ELY		Time Unit	JANICE BROWN			
Medical Unit	ROBERT RUSSELL		Procurement Unit	CHRISTOPHER FORD			
Food Unit	EDWIN MAYBERRY/DALE THOMPSON /WHITNEY VONADA(t)		Comp/Claims Unit	ANNMARIE CARLSON			
			Cost Unit	ROGER SIEMERS			
9. Date/Time Prepared: 8/06/15 0900		Prepared By: ERIC MATYE, RESL		Signature:			

Fire Weather Forecast

FORECAST NO: 5
PREDICTION FOR: NIGHT SHIFT
SHIFT DATE: Aug 6-7, 2015
TIME AND DATE
FORECAST ISSUED: Aug 6, 2015 1800 PDT

NAME OF FIRE: Mad River Complex
UNIT: Six Rivers NF
SIGNED: Matt Mehle
Incident Meteorologist



*******POSSIBLE THUNDERSTORMS LATE TONIGHT AND FRIDAY*******

WEATHER DISCUSSION: A storm system will move into the SF Bay Area tonight bringing a slight chance for thunderstorms late tonight. The best chance will be south and east of the fire complex. Winds will remain terrain driven and relatively light. Any tstorms will produce erratic/gusty winds.

WEATHER FORECAST FOR THURSDAY NIGHT:

WEATHER: Partly cloudy with a slight chance for thunderstorms (15%). Best chc south and east of Mad River Complex. Smoke settling into the canyons after 2200-0000.

TEMPERATURES: Min 50-58-F.

HUMIDITY: Max Valley bottom... 85-95%; Ridges... 55-75%.

20-FOOT WIND:

SLOPE/VALLEY - Upslope 2-5 with gusts to 7 mph in the evening...becoming downcanyon/downslope to less than 4 mph after 2200.

RIDGETOP - West 4 to 7 mph with gusts to 9 mph in the evening and early part of night...becoming variable less than 4 mph overnight.

INVERSIONS/STABILITY: Canyon inversions becoming establishing 2100-2200. **LAL:2**

OUTLOOK FOR FRIDAY:

Partly to mostly sunny with areas of smoke. Slight chance for thunderstorms(20%). **LAL:2** Max Temps... 82-92. Min RH... 19-30%. Ridgetop wind: Variable 3 to 5 mph becoming west/southwest 4 to 8 mph with gusts to 12 mph. Slope/Valley wind: Light and variable in the morning becoming Upcanyon / Upslope 2 to 4 mph with gusts to 6 mph. Strongest in aligned drainages.

INVERSIONS/STABILITY: Slightly unstable during the day with better ventilation. Cloud build ups.

WEATHER FORECAST FOR FRIDAY NIGHT:

WEATHER: Threat for thunderstorms diminishes quickly in the evening. Partly cloudy. Smoke settling into the canyons after 2200-0000.

TEMPERATURES: Min 50-58-F.

HUMIDITY: Max Valley bottom... 85-95%; Ridges... 70-80%.

20-FOOT WIND:

SLOPE/VALLEY - Upslope 2-5 with gusts to 7 mph in the evening...becoming downcanyon/downslope to less than 4 mph after 2200.

RIDGETOP - West 4 to 7 mph with gusts to 9 mph in the evening and early part of night...becoming variable less than 4 mph overnight.

INVERSIONS/STABILITY: Becoming more stable overnight with smoke settling late.

EXTENDED FORECAST:

SATURDAY... Mostly sunny with areas of smoke. Max temps... 80s. Min temps 50s to lower 60s. Min RH 20-35%. West and southwest winds 5 to 15 mph. Strongest over ridges and upper slopes.


SUNSET: 8:24 PM **SUNRISE:** 6:16 AM

REALTIME RAWS INFO for MAD RIVER COMPLEX

Div A - MAD RIVER
Div D - FRIEND MTN
Div G - RUTH



FIRE BEHAVIOR FORECAST

FORECAST NUMBER: 10	TYPE OF FIRE: Wildland Fire
FIRE NAME: Mad River Complex	OPERATIONAL PERIOD: Night
DATE / TIME ISSUED: Aug 6, 2015 2000	DATE: Aug 6-7, 2015
UNIT: Six Rivers NF / Mad River	SIGNED: 
	Steve Paes FBAN

INPUTS

WEATHER SUMMARY:

Mostly clear with smoke settling into valleys after 2200.

Temperatures: 50-58

Max. Relative Humidity: 85-95% valleys; 55-70% ridgetops.

Wind: Slope/Valley- Upslope 2-5 mph with gusts to 7 mph becoming downcanyon/downslope 4 mph after 2200.

Ridgetop Winds- West 4-7 mph gusts to 9 mph early in the shift becoming light and variable.

LAL=1 Chance of Wetting Rain= 0%

GENERAL:

The fire is burning timber Fuels with some brush and grass intermix. Manzanita, Mixed Pine, Cedar and Douglas Fir are throughout. Live Fuel Moisture = Timber 150% Shrubs 80%. Tree mortality and low fuel moisture levels in the aerial fuels and will contribute to torching.

Fire spread has been primarily topography driven and should continue again during today's shift. The predominant factor of fire spread has been surface fire spread backing downhill. Roll out on steep slopes is contributing to rates of spread.

Where flanking movement goes across slope under unburned fuels, the fire can transition to head fire with short crown runs. Torching and short duration crown fire runs may also develop where slope and winds align. Past significant runs were with slope and wind alignment from thunderstorm winds. Low dead fuel moisture contents are the driver behind continuous fuel consumption.

Rates of spread: head fire = 3-8ch/hr with backing 1-3 ch/hr.

With strong winds ROS of 25-40 ch/hr with head fire with crown involvement.

Probability of Ignition (PIG) = 60% shaded fuels to 90% exposed fuel, dropping to 10% during the shift.

Spotting distances of up to ½ mile have been observed.

Dead fuel moisture contents: 10hr = 5% , 100hr and 1000hr =10%

SPECIFIC:

All Divisions:

Expect active burning during the early portion of the shift. Activity will diminish as fine fuels stop carrying fire due to rising humidity. Large down and dead fuels will continue to burn during the shift.

Anticipate complete fuel consumption of larger fuels due to low fuel moistures. Stumps and roots have the potential to burn out creating stump holes that will be a hazard at night. Mopping up stump holes may be a challenge if you have to dig out the burning roots.

Torching can occur that could transition to short crown runs on steep slopes.

AIR OPERATIONS

Smoke may effect operations during the early portion of the shift. Smoke from other fires may contribute to poor visibility over the incident and/or helibase.



Sunset: 2024

SAFETY

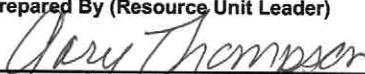
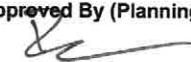
Think about how low fuel moistures and the prolonged drought could affect your operations. Radiant heat could be greater than you normally experience...will that affect your planned escape route and safety zone? Spot fires will be more persistent and harder to put out...will it take fewer spots than normal to trigger a Watch Out Situation?

Identify when your fire has the ability re-position itself to run upslope with headfire.



Division/Group Assignment List (ICS 204 WF)

1. Incident Name:			3.			
MAD RIVER COMPLEX			Branch:		Division/Group: A/D/G	
2. Operational Period: NIGHT						
Date/Time From: 08/06/2015 1800 THU		Date/Time To: 08/07/2015 0900 FRI				
4. Operations Personnel						
OPERATIONS CHIEF		LESLIE CURTIS		BRANCH DIRECTOR		COREY ROSE
DIVISION/GROUP SUPERVISOR		JORDAN MCKNIGHT		AIR ATTACK SUPERVISOR		
5. Resources Assigned this Period						
Strike Team / Task Force / Resource Designator		LWD	Leader	Number Persons	Drop Off PT./Time	Pick Up PT./Time
ENGINE S/T - T1 - CA-XSC - 2311A		08/14	RICHARD ALAMEDA	22	DP-15/1900	DP-15/0800
ENGINE S/T - T3 - MAD RIVER 1		08/19	JIM OBERRITER	21	DP-15/1900	DP-15/0800
ENGINE - T4 - CENTRAL WILDFIRE 742		08/14	JOHN THORSEM	3	DP-15/1900	DP-15/0800
ENGINE - T6 - PACIFIC HABITAT 66		08/14	DUSTIN STEERS	3	DP-15/1900	DP-15/0800
6. Control Operations/Work Assignments:						
Patrol and secure fire line adjacent to structures and to prevent fire from crossing North of Hwy 36. Patrol and secure fire line adjacent to structures along the Mad River Road and Hwy 36 to Terrel Rd.						
7. Special Instructions:						
USE COMMAND TO MAKE CONTACT WITH DAY DIVISIONS						
Use caution with venomous snakes, power lines and high pressure gas lines, in the Forest Glen area.						
Caution for Mountain Lion activity in the area of Division A on 8/4/15.						
8. Division/Group Communication Summary						
Function	Channel	RX Frequency N/W	RX Tone/NAC	TX Frequency N/W	TX Tone/NAC	Mode
COMMAND	1	168.1000	0.0	170.4500	123.0	A
TACTICAL	4	166.5500	0.0	166.5500	0.0	A
AIR TO GROUND CMD	14	169.1500	0.0	169.1500	0.0	A
9. Prepared By (Resource Unit Leader)			Approved By (Planning Section Chief)		Date	Time
					08/06/2015	1300

Division/Group Assignment List (ICS 204 WF)

1. Incident Name:			3.			
MAD RIVER COMPLEX			Branch:		Division/Group: S/W	
2. Operational Period: NIGHT						
Date/Time From: 08/06/2015 1800 THU		Date/Time To: 08/07/2015 0900 FRI				
4. Operations Personnel						
OPERATIONS CHIEF		LESLIE CURTIS		BRANCH DIRECTOR		COREY ROSE
DIVISION/GROUP SUPERVISOR		ALAN HUSKINS		AIR ATTACK SUPERVISOR		
5. Resources Assigned this Period						
Strike Team / Task Force / Resource Designator		LWD	Leader	Number Persons	Drop Off PT./Time	Pick Up PT./Time
ENGINE S/T - T1 - OES 4805A		08/14	ERIC DEHART	22	DP-30/1900	DP-30/0800
ENGINE - T6 - SMITHFIELD FD - B40		08/14	BRANDT PITCHER	3	DP-30/1900	DP-30/0800
ENGINE - T6 - NORTH LOGAN FD - BRUSH 120		08/14	JON KELLER	3	DP-30/1900	DP-30/0800
ENGINE - T6 - LOGAN FD - E-670		08/14	JASON GIBBONS	3	DP-30/1900	DP-30/0800
6. Control Operations/Work Assignments:						
Patrol and mop up along East Van Duzen Road to prevent fire from crossing to the West. Patrol, mop up and secure fire line adjacent to structures along West Bank Rd./01S06 Road to prevent fire from spreading into and/or crossing West Bank Rd/01S06 Road. Patrol, mop up dozer line on the Southern end of Division S/W to limit fire spread across line.						
7. Special Instructions:						
USE COMMAND TO MAKE CONTACT WITH DAY DIVISIONS						
Use caution with numerous snakes and wildlife in fire area.						
8. Division/Group Communication Summary						
Function	Channel	RX Frequency N/W	RX Tone/NAC	TX Frequency N/W	TX Tone/NAC	Mode
COMMAND	1	168.1000	0.0	170.4500	123.0	A
TACTICAL	4	166.5500	0.0	166.5500	0.0	A
AIR TO GROUND CMD	14	169.1500	0.0	169.1500	0.0	A
9. Prepared By (Resource Unit Leader)			Approved By (Planning Section Chief)		Date	Time
					08/06/2015	1300

Division/Group Assignment List (ICS 204 WF)

1. Incident Name:			3.			
MAD RIVER COMPLEX			Branch:		Division/Group: B/F/FOREST GLEN SPG	
2. Operational Period: NIGHT						
Date/Time From: 08/06/2015 1800 THU		Date/Time To: 08/07/2015 0900 FRI				
4. Operations Personnel						
OPERATIONS CHIEF				BRANCH DIRECTOR		
DIVISION/GROUP SUPERVISOR				AIR ATTACK SUPERVISOR		
5. Resources Assigned this Period						
Strike Team / Task Force / Resource Designator		LWD	Leader	Number Persons	Drop Off PT./Time	Pick Up PT./Time
UNASSIGNED						
6. Control Operations/Work Assignments:						
7. Special Instructions:						
8. Division/Group Communication Summary						
Function	Channel	RX Frequency N/W	RX Tone/NAC	TX Frequency N/W	TX Tone/NAC	Mode
COMMAND						
TACTICAL						
LOGISTICS						
AIR TO GROUND						
9. Prepared By (Resource Unit Leader)			Approved By (Planning Section Chief)		Date	Time
					08/06/2015	1530

Division/Group Assignment List (ICS 204 WF)

1. Incident Name:			3.			
MAD RIVER COMPLEX			Branch:		Division/Group:	
2. Operational Period: NIGHT						
Date/Time From: 08/06/2015 1800 THU		Date/Time To: 08/07/2015 0900 FRI		RUTH LAKE SPG		
4. Operations Personnel						
BRANCH DIRECTOR						
5. Resources Assigned this Period						
Strike Team / Task Force / Resource Designator		LWD	Leader	Number Persons	Drop Off PT./Time	Pick Up PT./Time
UNSTAFFED						
6. Control Operations/Work Assignments:						
7. Special Instructions:						
Coordinate with Operations prior to requesting mapping and resource needs.						
8. Division/Group Communication Summary						
Function	Channel	RX Frequency N/W	RX Tone/NAC	TX Frequency N/W	TX Tone/NAC	Mode
COMMAND						
TACTICAL						
LOGISTICS						
AIR TO GROUND						
9. Prepared By (Resource Unit Leader)			Approved By (Planning Section Chief)		Date	Time
<i>Gary Thompson</i>			<i>[Signature]</i>		08/06/2015	1530

Division/Group Assignment List (ICS 204 WF)

1. Incident Name:			3.			
MAD RIVER COMPLEX			Branch:		Division/Group:	
2. Operational Period: NIGHT			LASSIC		AA/LL/VV	
Date/Time From: 08/06/2015 1800 THU	Date/Time To: 08/07/2015 0900 FRI					
4. Operations Personnel						
OPERATIONS CHIEF		BRANCH DIRECTOR				
DIVISION/GROUP SUPERVISOR		AIR ATTACK SUPERVISOR				
5. Resources Assigned this Period						
Strike Team / Task Force / Resource Designator		LWD	Leader	Number Persons	Drop Off PT./Time	Pick Up PT./Time
UNSTAFFED						
6. Control Operations/Work Assignments:						
7. Special Instructions:						
8. Division/Group Communication Summary						
Function	Channel	RX Frequency N/W	RX Tone/NAC	TX Frequency N/W	TX Tone/NAC	Mode
COMMAND						
TACTICAL						
LOGISTICS						
AIR TO GROUND						
9. Prepared By (Resource Unit Leader)			Approved By (Planning Section Chief)		Date	Time
<i>Gary Thompson</i>			<i>[Signature]</i>		08/06/2015	1530

SAFETY MESSAGE

“**SAFETY** is a **CORE VALUE** to be integrated into **ALL** incident activities”

MAD RIVER COMPLEX

08/6/2015 NIGHT 1800-0900

- **Driving on the Incident** – Many of the roads within the complex are higher quality with good running surfaces. This can easily result in excessive speeds. Watch your speed. Other Forest System Roads are narrow, winding with few wide spots for turning around or getting by opposing traffic; there are places with narrow shoulders and no guard rails at the top of drop-offs. Inattention, distracted driving, or fatigue could result in an accident. Drive with headlights on. Make sure drivers are well-rested. There are numerous deer on the roads at night. In addition, Trinity County is designated as open range and there are many cows on the roads. Increase following distances on dusty roads.
- **Snags and Hazard Trees** - Follow Hazard Tree Safety Guidelines (IRPG p. 22). Limit number of personnel around snags and their exposure time; fallers must be qualified for trees being felled. Be especially alert around snags during wind events and after dark. Check overhead for dead branches in sleeping areas. **Maintain Situational Awareness!**
- **Hazardous Terrain** - Steep terrain is one of the most serious hazards on this incident. Rolling material may be a major issue. Rocks and trees may have been loosened or dislodged by the fire. Evaluate your work area closely before entering. Spread workers out farther than 10 feet apart. Stagger workers so they are not working or walking directly below each other.
- **Bees, snakes and other critters** – There are numerous yellow jackets (and their nests) in the area. Rattlesnakes are common as well. Bears and mountain lions have been seen within the complex. Flag any nests encountered and report bear and mountain lion sightings to your supervisor and/or safety.
- **Thunderstorm Safety** – There may be lightning tonight. Review page 21 of your IRPG and take appropriate precautions as outlined in the IRPG.

COMMUNICATIONS RESPONSIBILITIES

All firefighters have five communication responsibilities:

- Brief others as needed.
- Debrief your actions.
- Communicate hazards to others.
- Acknowledge messages.
- Ask if you don't know or are unclear.

In addition, all leaders of firefighters have the responsibility to provide complete briefings that include a clearly stated “Leader’s Intent.”

- Task = What is to be done
- Purpose = Why it is to be done
- End State = How it should look when done

TIPS FOR STAYING AWAKE WHILE DRIVING

1. Get the best sleep possible given the circumstances.
2. Learn to recognize and pay attention to the warning signs of fatigue. Take a break if you experience wandering or disconnected thoughts, yawn repeatedly, have difficulty focusing or keeping your eyes open, or find yourself missing traffic signs, tailgating other drivers, or falling behind the pace of other traffic.
3. Don't count on tricks like turning up the radio or opening the window for fresh air to keep you awake—these will help for only a short while.
4. If you're planning on driving a long distance, drive during the time of the day when you are normally awake.
5. Take breaks in a safe area every two hours or more frequently if you are feeling any signs of sleepiness.

Safety Officers: Marty Hamel, Charlotte Jordan and Dave Morton

All DIV	Night Operations	<ul style="list-style-type: none"> ~ Maintain high visibility in work area and wear vest while in roadway. ~ Use glow sticks to mark hazards. ~ Ensure personnel have a personal light (headlamp) ~ Watch for signs of fatigue ~ Scout and evaluate all areas of work prior to engagement ~ Watchout Situation #1 – In country not seen in daylight
ALL DIV	Hazard Trees	<ul style="list-style-type: none"> ~ Follow "Hazard Tree Safety" guidelines, IRPG (2014) page 22&23 ~ Post lookouts, or spotter in mop-up areas with high concentrations of danger trees ~ Don't park vehicles or take breaks in high concentrations of hazard trees ~ Establish "Decision Points" for disengagement during high wind events ~ Do not fall snags at night
ALL DIV	Driving and Traffic	<ul style="list-style-type: none"> ~ Practice "Defensive Driving" techniques, mitigation strategies include: ~ Use spotters when backing ~ Honk horn to alert personnel when backing ~ Always use headlights ~ Drive at posted or slower speed limits as conditions warrant ~ Be on the alert for opposing traffic that may be in your lane ~ Watch out on narrow, winding roads that may have steep drop offs ~ Use chock blocks, turn wheels into hill ~ Seat Belts are mandatory ~ No texting while driving ~ Watch for wildlife and livestock on all roads day or night. Be prepared for sudden, unexpected stops.
DIV A/D	Power Utilities and Gas Lines	<ul style="list-style-type: none"> ~ Notify all personnel of downed electrical lines. ~ Refer to the IRPG pages 24-25 (2014) for Power Line Safety ~ Always treat downed wires as energized ~ Identify and avoid high-tension transmission lines. ~ Identify and avoid high pressure natural gas lines ~ Identify and avoid damaged gas service near structures ~ Be aware of utility restoration in your work area
ALL DIV	Potential for Extreme Fire Behavior	<ul style="list-style-type: none"> ~ Share weather observations with all personnel assigned to division ~ Establish "Decision Points" to withdraw ~ Use "Risk Management" process prior to engaging in suppression actions, refer to page 1, IRPG (2014) ~ Review "Severe fire behavior potential" IRPG pg. 68 (2014) ~ Maintain adequate escape routes and safety zones and continue to re-evaluate throughout the shift ~ Maintain situational awareness ~ Factor in drought conditions and local ERC prior to operations ~ Base all actions on past, current and expected behavior of the fire
ALL DIV	Fireline Hazards and Mop Up	<ul style="list-style-type: none"> ~ Do not work directly above or below personnel during mop-up operations ~ Watch for falling and rolling debris on steep slopes ~ Maintain 8'-10' spacing when working & walking ~ Alert crew personnel of rolling debris by yelling to affected individuals ~ Position debris that could roll vertically on slope ~ Watch for weakened trees that may pose danger or fall ~ Scout areas for mop up prior to work. Wear appropriate PPE ~ Identify and make known burning stumps or roots that may cave in
ALL DIV	Fatigue, Overexertion, dehydration and heat related illness	<ul style="list-style-type: none"> ~ Drink fluids throughout operational period (water and Gatorade) <u>not energy drinks</u> ~ Rotate crews out of smoky areas ~ Set a reasonable work pace and allow adequate rest breaks ~ Use buddy system to monitor personnel of heat related and fatigue issues ~ Follow work / rest guidelines ~ Refer to IRPG pg. 103 (2014) for Heat Related Injuries
ALL DIV	Marijuana Plantations	<ul style="list-style-type: none"> ~ Leave area quietly the same direction that you entered and notify DIVS ~ Watch for hazardous materials and be aware of possible traps in the grow area ~ Use extreme caution during encounters. Individuals guarding plantation may be armed ~ Grower may become confrontational, maintain calm demeanor and leave area
ALL DIV	Communications	<ul style="list-style-type: none"> ~ Maintain communication with aviation resources, and suppression organization. ~ Ensure all know frequency and protocol for contacting resources ~ Utilize the ICS 205 and 204
ALL DIV	Firing Operations & Devices	<ul style="list-style-type: none"> ~ Only personnel trained in the use of each device will be authorized to use firing equipment. ~ Ensure all personnel are aware of firing operation that may affect them. Wear appropriate PPE ~ Ensure aerial/ground ignition plans have been adequately developed and personnel are briefed.
ALL DIV	Environmental Hazards	<ul style="list-style-type: none"> ~ Be alert for rattlesnakes, watch footing and hand placement around rocks ~ Check yourself for ticks, watch for bees and other insects that bite or sting ~ Be alert for bears, cougars, and other wildlife ~ Poisonous plants - identify plants and avoid; Change and wash clothing and shower frequently

INCIDENT RADIO COMMUNICATIONS PLAN		Incident Name		Date/Time Prepared		Operational Period Date/Time			
		Mad River Complex SRF-001433		8/6/15, 2000 hrs		8/6-7/15, 1800-0900			
Zn / Ch	Function	Channel Name/Trunked Talkgroup	Assignment	RX Freq	RX Tone/NAC	TX Freq	TX Tone/NAC	Mode A, D, M	Remarks
1	Command	NIFC C2	All Divisions	168.1000	0.0	170.4500	123.0	A	Medical
2	Command	NIFC C9	Not Deploy	170.0125	0.0	165.2500	123.0	A	
3	Command		Future use						
4	Tactical	R5 T4	NIGHT Div./A/G/S/W/D	166.5500	0.0	166.5500	0.0	A	
5	Tactical	R5 T6	unassigned	168.2375	0.0	168.2375	0.0	A	
6	Tactical	NIFC T5	unassigned	166.7250	0.0	166.7250	0.0	A	
7	Tactical	NIFC T6	unassigned	166.7750	0.0	166.7750	0.0	A	
8	Tactical	NIFC T7	unassigned	168.2500	0.0	168.2500	0.0	A	
9	Tactical	VTAC 14	unassigned	159.4725	156.7	159.4725	156.7	A	Tone 6
10	Tactical	VFIRE 25	unassigned	154.2875	156.7	154.2875	156.7	A	Tone 6
11	Tactical	VFIRE 26	unassigned	154.3025	156.7	154.3025	156.7	A	Tone 6
12	Dispatch	SRF-2 FN	IA & Emergency Backup	168.7250	0.0	170.1250	103.5	A	Tone 8: Local Dispatch - IA and emergency backup
13	Tactical	CALCORD	Medical	156.0750	156.7	156.0750	156.7	A	Life Flight, etc.
14	Air - Ground CMD	A-G 1	All Divisions	169.1500	0.0	169.1500	0.0	A	
15	Air - Ground TAC	N/A	N/A		0.0		0.0	A	
16	Emergency only	GUARD	All Divisions	168.6250	0.0	168.6250	110.9	A	AIR GUARD - emerg. use only-Tone 1
17									
18									
19									
20	Emergency only	GUARD	All Divisions	168.6250	0.0	168.6250	110.9	A	AIR GUARD - emerg. use only -Tone 1

Prepared By (Communications Unit Leader) 
Greg Ely, COML
 Deviation is assumed to be narrow band unless otherwise noted in the remarks. Mode refers to either "A" (analog), "D" (digital) or "M" (mixed mode). 1/14/14 v.5

Incident Location
 County Trinity Latitude, Longitude N 40 12.334, W 123 17.844

MEDICAL PLAN

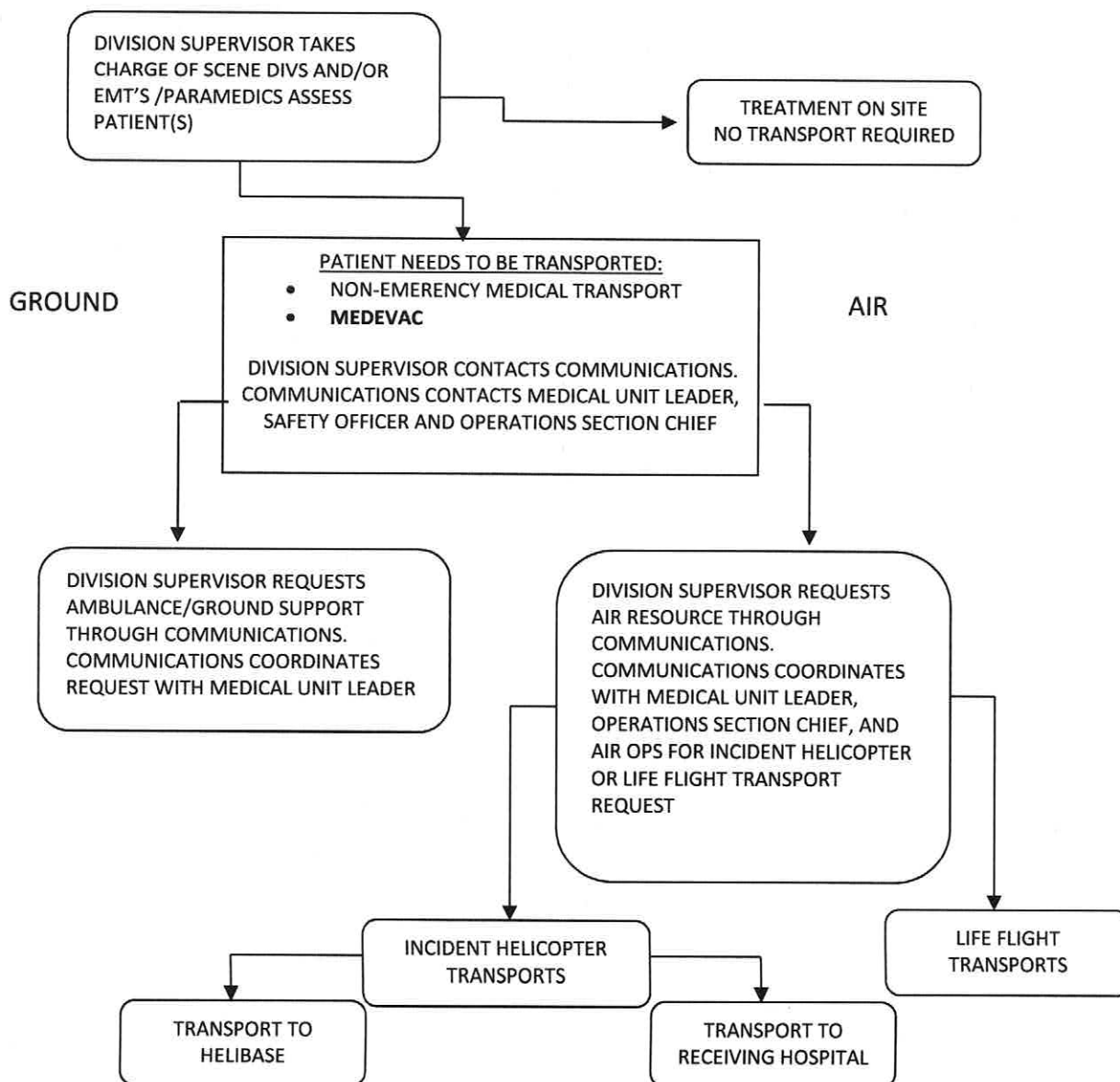
1. Incident/Project Name		2. Operational Period				
Mad River Complex		Date/Time 08/06-07/2015 - 1800-0900				
2. Aid Station						
Name	Complete Address	Phone & EMS Frequency	Advanced Life Support (ALS) Yes No			
Frontline Medical	Mad River ICP Flying AA Ranch Ruth Lake, CA	530-927-8133	XX			
3. Ambulance Services						
Name	Complete Address	Phone & EMS Frequency	Advanced Life Support (ALS) Yes No			
Trinity County Life Support Medic 305	Mad River ICP	530-623-2500	XX			
Southern Area Trinity Rescue	153 A Van Duzen Rd. Mad River, CA	707-574-6421			XX	
4. Air Ambulance Services						
Name	Phone	Type of Aircraft & Capability				
CAL FIRE H102 Day Hoist	707-726-1268	B205A++ Hoist				
CHP H14/H16 Day Hoist	530-242-3210	A Star B3 Hoist				
CA ANG Guard 825 North Ops Hoist/Extraction Helo	530-243-1434	H60 (Blackhawk) NVG/Hoist				
PHI Med 43/REACH	800-597-9571	EC 135 IFR/NVG B407 NVG				
5. Hospitals						
Name Complete Address	GPS Datum – NAD 83 Coordinate Standard Degrees Decimal Minutes DD° MM.MMM' N - Lat DD° MM.MMM' W - Long	Travel Time Air Gnd	Phone	Helipad Yes No	Level of Care Facility	
St Joseph Hospital 2700 Dolbeer St Eureka, CA 95501	Lat: N 40 47.02	20 Min	2.5 HRS	707-269-4250 707-442-8646	X	Level II Trauma Center
	Long: W 124 23.67					
	VHF:					
Shasta Regional Medical Center 110 Butte St. Redding, CA 9600	Lat: N 40 35.18	30 Min	3 HRS	530-244-5353 530-243-4042	X	
	Long: W122 23.13					
	VHF:					
Redwood Memorial Hospital 3300 Renner Dr. Fortuna, CA 95540	Lat:		2.5 HRS	707-725-3361		X
	Long:					
	VHF:					
Mercy Medical Center 2175 Rosaline Redding, CA 96001	Lat: N 40 34.29	30 Min	3 HRS	530-225-7201 530-242-4401	X	
	Long: W 122 23.67					
	VHF:					
UC Davis Medical Center 2315 Stockton Blvd Sacramento, CA 95817	Lat: N 38 33.17	1.5 HRS	5 HRS	916-734-3790 916-734-5669		X
	Long: W 121 27.05					
	VHF:					
6. Prepared By (Medical Unit Leader)						
Robert Russell MEDL		7. Date/Time		8. Reviewed By (Safety Officer)		
08/06/2015 1200		Marty Hamel SOF1		08/06/2015 1200		

Initiate care with available resources at scene and notify DIVS when an injury occurs.

The DIVS, or designee, shall coordinate the incident and direct necessary actions. Take the following actions:

1. Determine the nature of the emergency.
2. If the emergency is a medical injury/illness, determine if the injury/illness is life threatening.
3. If the injury is life threatening, then clear designated frequency for emergency traffic.
4. Identify the on-scene point of contact by position.
5. Contact the Medical Unit Leader immediately.
6. Identify number injured, patient assessment(s) and location (geographic and/or GPS coordinates).
7. Identify on-scene medical personnel by position and last name (i.e. EMT Jones).
8. Identify preferred method of patient transport.
9. Determine any additional resources or equipment needed.

Continually evaluate the Evacuation Plan, develop contingencies in the event the first plan is not effective.



Medical Incident Report					
FOR ALL MEDICAL EMERGENCIES: IDENTIFY ON SCENE INCIDENT COMMANDER BY NAME AND POSITION AND ANNOUNCE "MEDICAL EMERGENCY" TO INITIATE RESPONSE FROM IMT COMMUNICATIONS/DISPATCH.					
Use items one through nine to communicate situation to communications/dispatch.					
1. CONTACT COMMUNICATIONS/DISPATCH <i>Ex: "Communications, Div. Alpha. Stand-by for Priority Medical Incident Report." (If life threatening request designated frequency be cleared for emergency traffic.)</i>					
2. INCIDENT STATUS: <i>Provide incident summary and command structure.</i>					
Nature of Injury/Illness			<i>Describe the injury (Ex: Broken leg with bleeding)</i>		
Incident Name			<i>Geographic Name + "Medical" (Ex: Trout Meadow Medical)</i>		
Incident Commander			<i>Name of IC</i>		
Patient Care			<i>Name of Care Provider (Ex: EMT Smith)</i>		
3. INITIAL PATIENT ASSESSMENT: <i>Complete this section for each patient. This is only a brief, initial assessment. Provide additional patient info after completing this 9 Line Report.</i>					
Number of Patients:	Male / Female	Age:	Weight:		
Conscious? <input type="checkbox"/> YES <input type="checkbox"/> NO = MEDEVAC!					
Breathing? <input type="checkbox"/> YES <input type="checkbox"/> NO = MEDEVAC!					
Mechanism of Injury: <i>What caused the injury?</i>					
Lat/Long (Datum WGS84) <i>Ex: N 40° 42.45' x W 123° 03.24'</i>					
4. SEVERITY OF EMERGENCY, TRANSPORT PRIORITY					
SEVERITY			TRANSPORT PRIORITY		
<input type="checkbox"/> URGENT-RED Life threatening injury or illness. <i>Ex: Unconscious, difficulty breathing, bleeding severely, 2° – 3° burns more than 4 palm sizes, heat stroke, disoriented.</i>			Ambulance or MEDEVAC helicopter. Evacuation need is IMMEDIATE.		
<input type="checkbox"/> PRIORITY-YELLOW Serious Injury or illness. <i>Ex: Significant trauma, not able to walk, 2° – 3° burns not more than 1-2 palm sizes.</i>			Ambulance or consider air transport if at remote location. Evacuation may be DELAYED.		
<input type="checkbox"/> ROUTINE-GREEN Not a life threatening injury or illness. <i>Ex: Sprains, strains, minor heat-related illness.</i>			Non-Emergency. Evacuation considered Routine of Convenience.		
5. TRANSPORT PLAN:					
Air Transport: (Agency Aircraft Preferred)					
<input type="checkbox"/> Helispot		<input type="checkbox"/> Short-haul/Hoist		<input type="checkbox"/> Life Flight	
				<input type="checkbox"/> Other	
Ground Transport: <i>Click here to enter text.</i>					
<input type="checkbox"/> Self-Extract		<input type="checkbox"/> Carry-Out		<input type="checkbox"/> Ambulance	
				<input type="checkbox"/> Other	
6. ADDITIONAL RESOURCE/EQUIPMENT NEEDS:					
<input type="checkbox"/> Paramedic/EMT(s)		<input type="checkbox"/> Crew(s)		<input type="checkbox"/> SKED/Backboard/C-Collar	
<input type="checkbox"/> Burn Sheet(s)		<input type="checkbox"/> Oxygen		<input type="checkbox"/> Trauma Bag	
<input type="checkbox"/> Medication(s)		<input type="checkbox"/> IV/Fluid(s)		<input type="checkbox"/> Cardiac Monitor/AED	
<input type="checkbox"/> Other (i.e. splints, rope rescue, wheeled litter)					
7. COMMUNICATIONS:					
Function	Channel Name/Number	Receive (Rx)	Tone/NAC *	Transmit (Tx)	Tone/NAC *
<i>Ex: Command</i>	<i>Forest Rpt, Ch. 2</i>	<i>168.3250</i>	<i>110.9</i>	<i>171.4325</i>	<i>110.9</i>
COMMAND					
AIR-TO-GRND					
TACTICAL					
*(NAC for digital radio system)					
8. EVACUATION LOCATION:					
Lat/Long (Datum WGS84) <i>EX: N 40 42.45' x W 123 03.24'</i>					
Patient's ETA to Evacuation Location:					
Helispot/Extraction Size and Hazards:					
9. CONTINGENCY:					
Considerations: <i>If primary options fail, what actions can be implemented in conjunction with primary evacuation method? Be thinking ahead...</i>				REMEMBER: Confirm ETA's of resources ordered Act according to your level of training Be Alert. Keep Calm. Think Clearly. Act Decisively.	

Finance Message

Reminder!!!

The IIBMH (yellow book) states that the Incident Supervisor will certify CTRs or Shift Tickets each operational period which contain time of actual work, ordered standby or compensable travel coming to or going home from the incident. Be sure to get your CTR or Shift Ticket signed prior to submitting to Finance.

Shifts over 16 hours need to have documentation of why and needs IC approval. This includes travel time. Excess shifts must be mitigated.

Reminder... a driver shall drive only if they have had at least 8 **consecutive** hours off duty before beginning a shift. Exception to the minimum off-duty hour requirement is allowed when **essential** to:

Accomplish immediate and critical suppression objectives or

Address immediate and critical firefighter or public safety issues.

Check the list of resources in Finance to see if you have an issue that needs to be corrected. Do this as soon as possible so you will not be held up in demob.

Comp/Claims Unit Leader is the one who receives requests for replacement of "lost, damaged or destroyed" equipment. All requests for Non-Cache items need to be approved by the IBA, FSC or IC. Don't wait until demob to begin this process.

Rental Cars – Prior to demobing, if you have a rental car that you obtained through the R5 USFS Agreement with Enterprise and it is being paid for by the Forest Service, please provide the following to Finance (Equipment Time)...

1. Copy of Rental Agreement
2. Copy of Resource Order showing rental is approved
3. Release Inspection from Ground Support.
4. Any supporting information including Claim and/or Damage documentation.

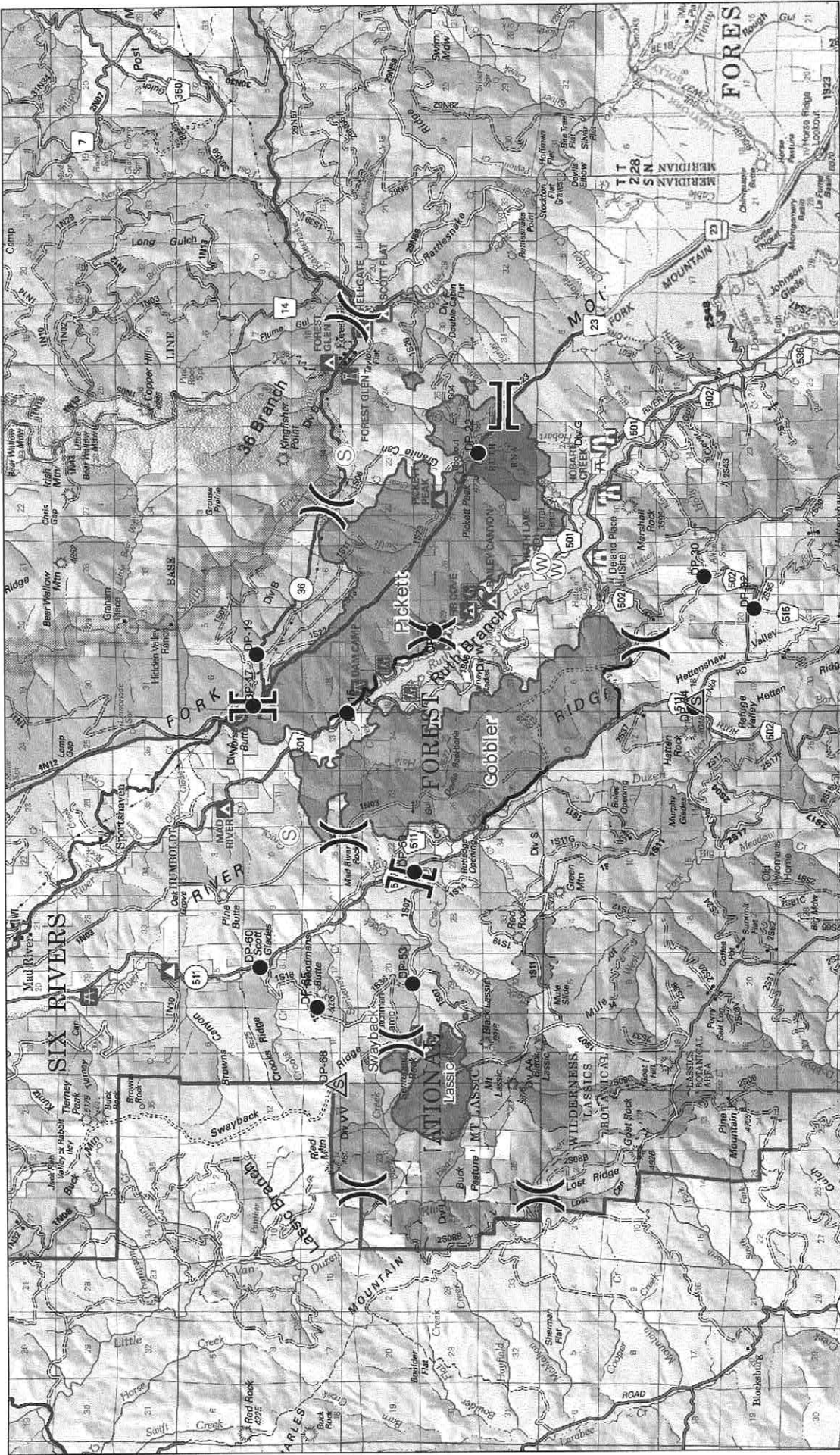
To confirm that the rental is being paid by the Forest Service, in the Bill to Area if it has USDA Forest Service, then we need the above information. If it has your name, then we don't need anything.

Potential Claims Against Or For The Government – Just a reminder that incident personnel should report any accident, incident or property damage which may result in a claim against or for the government and provide as much information/documentation that they can on what happened (include photos if possible). They should provide this information to Comp/Claims, their supervisor or Finance.

UPDATED 8/05/15

PLEASE SEE FINANCE

O-26	ABBOT, GEORGE	E-4	TONTO
O-49	BROWN, HAROLD	E-16	LONE PEAK
O-17	LANG, ANDREW	E-68	FRONTLINE MEDICAL
O-18	NOLAN, ERIC	E-69	TRINITY COUNTY LIFE SUPPORT
O-31	FOLEY, JOHN	E-73.7	SUPERSTITION FIRE
O-33	MEURTSSEN, PETE	E-74.5	HIGHLANDS
O-34	BRYANT, BILL	E-142	E3
O-43	SCHLOSBERG, ANDREWS	E-143	BLACK TMBER
O-44	FEEMAN, JASON		
O-59	MIZELL, STEPHEN		
O-65.48	SOLDAVINI, DAVID		
O-65.51	BUTLER, VIOLET		
O-65.66	SMITH, RON		
O-83	HARLAN, THOMAS		
C-1	FT. APACHE		
C-3	NORTH PACIFIC FORESTRY		
C-5	NORTH PACIFIC FORESTRY		
C-6	NORTH REFORESTATION INC.		
C-9	MQ FRANCO REFORESTATION		



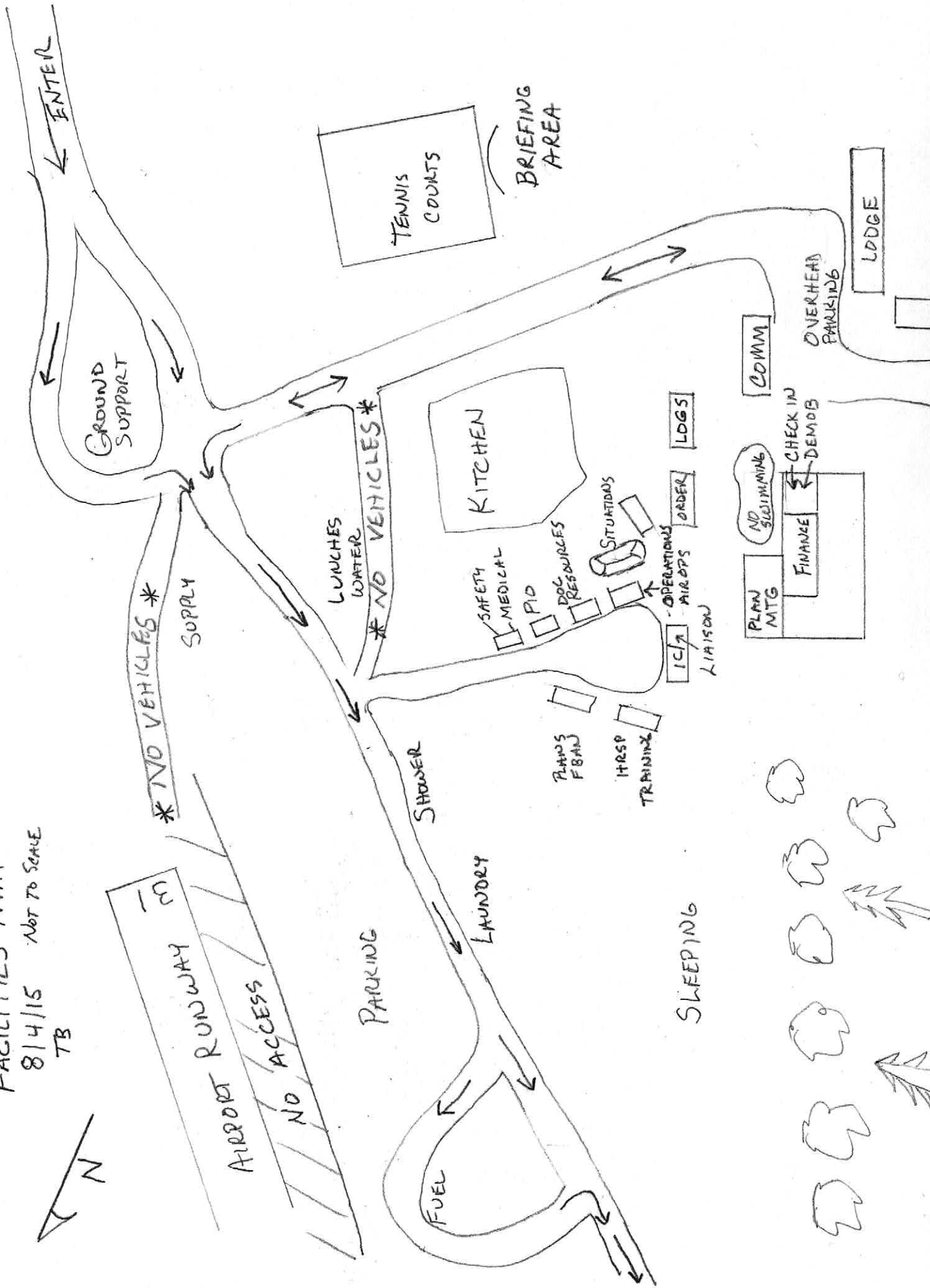
- Division
- Fire Perimeter
- Drop Point
- Staging Area
- Completed Line
- Water Source

TRANSPORTATION MAP

Mad River Complex
 CA-SRF-1433
 August 6, 2015

MAD RIVER COMPLEX
FACILITIES MAP

8/4/15 NOT TO SCALE
TB



UNIT LOG		1. Incident Name	2. Date Prepared	3. Time Prepared
4. Unit Name/Designators		5. Unit Leader (Name and Position)		6. Operational Period
7. Personnel Roster Assigned				
Name	ICS Position		Home Base	
9. Prepared by (Name and Position)				