

MAD RIVER COMPLEX

CA-SRF-001433

P5J0JC (0510)



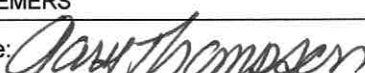
August 9-10, 2015

NIGHT Operational Period

1800 - 0900

INCIDENT OBJECTIVES	1. Incident Name Mad River Complex	2. Date 8/9/15	3. Time 1300
4. Operational Period NIGHT 08/9-10/15 1800 - 0900			
5. General Control Objectives for the Incident (include alternatives) Strategic Framework Provide for aggressive fire suppression utilizing direct and indirect tactics and providing point protection to threatened structures within the fire area. The threat to life, property and values at risk remains high. Tactics which reflect limited firefighting resources on hand and utilizing existing control features in areas with a high probability of success should be applied. Potential for continued fire spread is high due to fuels, weather and time of season. Leaders Intent Provide the highest level of customer services to all involved with or impacted by the Mad River Complex. All incident assigned personnel should be prepared to take the appropriate actions regarding: <ul style="list-style-type: none"> • Personal interactions internal and external to the incident management organization • Personal safety and the safety of others • Response to any incident-within-an-incident Objectives <ul style="list-style-type: none"> • Provide for Firefighter and Public safety through hazard recognition and application of the risk management process. • Reduce the threat to private property, residences and infrastructure through the application of direct suppression tactics. • Protect natural resources through utilization of control features that offer a high probability of success. • Engage in fire suppression operations that are cost effective, but commensurate with values at risk. • Protect wilderness values and botanical resources by ensuring Minimum Impact Suppression Tactics (MIST) are applied. 			
6. Weather Forecast for Period <ul style="list-style-type: none"> • WEATHER: Mostly clear. Smoke settling into the canyons after 2100-2300. • TEMPERATURES: Min Valley bottom...45-50-F; Ridges...48-55 • HUMIDITY: Max Valley bottom...80-90%; Ridges...45-60%. • 20-FOOT WIND: <ul style="list-style-type: none"> ○ SLOPE/VALLEY - Upslope 4-7 with gusts to 9 mph in the evening...becoming downcanyon/downslope to less than 4 mph after 2200. Locally gusty Hwy 36. ○ RIDGETOP - West to Southwest 5 to 10 mph with gusts to 18 mph in the evening and early part of night...becoming southwest to south 3 to 6 mph overnight. • INVERSIONS/STABILITY: Becoming more stable overnight with smoke settling around midnight 			
7. General Safety Message <ul style="list-style-type: none"> • Hazardous driving – NARROW SECTIONS OF HWY 36 – 30 MPH MAX • Be alert for hazard trees and wildlife • <i>Complacency – Situational Awareness</i> 			
8. Attachments (mark if attached)			
<input checked="" type="checkbox"/> Organization List - ICS 203 <input checked="" type="checkbox"/> Div. Assignment Lists - ICS 204 <input checked="" type="checkbox"/> Communications Plan - ICS 205 <input checked="" type="checkbox"/> READ Message	<input checked="" type="checkbox"/> Medical Plan - ICS 206 <input checked="" type="checkbox"/> Incident Map <input checked="" type="checkbox"/> Fire Weather Forecast <input checked="" type="checkbox"/> ICS 214	<input checked="" type="checkbox"/> Safety Message <input checked="" type="checkbox"/> Air Ops Summary ICS 220 <input checked="" type="checkbox"/> Base Camp Map <input checked="" type="checkbox"/> Fire Behavior	
9. Prepared by (Planning Section Chief) Rick Leuck <i>Rick Leuck PSC</i>	10. Approved by (Incident Commander) Mike Minton /s/ <i>Mike Minton for</i>		

ORGANIZATION ASSIGNMENT LIST (ICS-203)

1. Incident Name: MAD RIVER COMPLEX		2. Operational Period: NIGHT		Date From: 8/9/2015 Time From: 1800		Date To: 8/10/2015 Time To: 0900	
3. Incident Commander(s) and Command Staff:				7. Operations Section:			
Incident Commander	MIKE MINTON		Chief				
Deputy IC	CARLTON JOSEPH		Planning Ops		DON SMITH		
Safety Officer	HAMEL / MORTON / JORDAN (T) / VITWAR (T)		36 / Ruth Branch				
Public Information Officer	STEVE KLIEST / MARK SAVAGE		Branch Director		COREY ROSE		
Liaison Officer	RICK ALPERT / FREDERICK FLORES		Division/Group		A/D/G		JORDAN McKNIGHT
			Division/Group		S/W		ALAN HUSKINS
			Division/Group		B/F/Forest Glen SPG		UNSTAFFED
			Division/Group		Ruth Lake SPG		UNSTAFFED
			Division/Group				
4. Agency/Organization Representatives:				LASSIC Branch			
SIX RIVERS NF	DAN DILL		Branch Director		COREY ROSE		
CHP	TAMI McCANLESS		Division/Group		AA/LL/VV/YY		JASON SMITH / TROY MACGUIRE (T)
SOUTH TRINITY VFD	DON STEWART / BILL GERMAN		Division/Group				
TRINITY SO	JAKE HESS		Division/Group				
OES	GARY HUMPHREY		Branch IV				
5. Planning Section:				Division/Group			
Chief	TIM BAAL / RICK LEUCK (T)		Division/Group				
Deputy	DENNIS COOPER		Division/Group				
Resources Unit	ASHBY / MATYE / THOMPSON		Division/Group				
Situation Unit	MIKE Mc HARGUE / TAD MORLOCK		Division/Group				
Demobilization Unit	JIM COOLEY		Division/Group				
Documentation	PHIL SETTLES		Division/Group				
Fire Behavior Analyst	STEVE PAES		Contingency / Staging				
GISS	EVAN CONKLIN / JASON DUKE (T) MELISSA VARGAS (T)		Division/Group				
Training Specialist	ALLISON JACKSON		Division/Group				
IMET	MATT MEHLE		Division/Group				
READ	SCOTT HAGERTY / RAYMA COOLEY		Division/Group				
6. Logistics Section:				Division/Group			
Chief	TONY MARTINEZ/ JIM ECKROTH (T) TERESA STELMAN (T)						
Deputy			Air Operations Branch				
Support Branch				Air Ops Branch Dir.		JOHN KEESEE	
Supply Unit	MIKE BRADFORD		Air Support Grp Supervisor		CRAIG DADO		
Ordering Unit	MARIE BUTLER		Air tactical Group Supervisor		MIKE STOUT		
Facilities Unit	WALLY GROGAN		8. Finance/Administration Section:				
Ground Support Unit	JOHN BADARACCO / FRED SIMONDS		Chief		THERESA FORK		
Service Branch				Deputy			
Communications Unit	GREG ELY		Time Unit				
Medical Unit	ROBERT RUSSELL		Procurement Unit		CHRISTOPHER FORD		
Food Unit	EDWIN MAYBERRY / DALE THOMPSON / WHITNEY VONADA(T)		Comp/Claims Unit		ANNMARIE CARLSON / PAMELA BEAUJON (T)		
			Cost Unit		ROGER SIEMERS		
9. Date/Time Prepared: 8/9/15 1300		Prepared By: GARY THOMPSON, RESL			Signature: 		

Fire Weather Forecast

FORECAST NO: 11
PREDICTION FOR: NIGHT SHIFT
SHIFT DATE: Aug 9-10, 2015
TIME AND DATE
FORECAST ISSUED: Aug 9, 2015 1800 PDT

NAME OF FIRE: Mad River Complex
UNIT: Six Rivers NF
SIGNED: Matt Mehle *Matt Mehle*
Incident Meteorologist

*****INCREASING SOUTHERLY WINDS THE NEXT TWO DAYS*****

WEATHER DISCUSSION: *Another cool night over the Mad River Complex with moderate to excellent humidity recoveries. Winds will remain gusty during the evening and decrease slightly overnight, but remain breezy...especially ridges and southerly aspects.*

WEATHER FORECAST FOR SUNDAY NIGHT:

WEATHER: Mostly clear. Smoke settling into the canyons after 2100-2300.

TEMPERATURES: Min Valley bottom...45-50-F; Ridges...48-55

HUMIDITY: Max Valley bottom...80-90%; Ridges...45-60%.

20-FOOT WIND:

SLOPE/VALLEY - Upslope 4-7 with gusts to 9 mph in the evening...becoming downcanyon/downslope to less than 4 mph after 2200. Locally gusty Hwy 36.

RIDGETOP - West to Southwest 5 to 10 mph with gusts to 18 mph in the evening and early part of night...becoming southwest to south 3 to 6 mph overnight.

INVERSIONS/STABILITY: Becoming more stable overnight with smoke settling around midnight

OUTLOOK FOR MONDAY:

Mostly sunny with areas of smoke. Max Temps...78-87. Min RH...20-30%. Ridgetop wind: Southerly 3 to 5 mph becoming southwest 5 to 10 mph with gusts to 18 mph. Slope/Valley wind: drainage flow 3 to 5 mph in the morning becoming Upcanyon / Upslope 4 to 7 mph with gusts to 10 mph . Strongest in S aligned drainages.

WEATHER FORECAST FOR MONDAY NIGHT:

WEATHER: Mostly clear and breezy. Smoke settling into the canyons overnight.

TEMPERATURES: Min Valley bottom...47-53-F; Ridges...50-57

HUMIDITY: Max Valley bottom...85-95%; Ridges...55-70%.

20-FOOT WIND:

SLOPE/VALLEY - Upslope 4-7 with gusts to 9 mph in the evening...becoming downcanyon/downslope to less than 4 mph after 2200.

RIDGETOP - Southwest 5 to 10 mph with gusts to 18 mph in the evening and early part of night...becoming southerly 4 to 8 gusts to 15 mph overnight.

INVERSIONS/STABILITY: Becoming more stable overnight with smoke settling late.


SUNSET: 8:20 PM SUNRISE: 6:19 AM

REALTIME RAWS INFO for MAD RIVER COMPLEX

Location-----	Name
Div A -	MAD RIVER
36 Branch (higher elev) -	FRIEND MTN
Div G -	RUTH
Div D/F -	IRAWS 27 (FOREST GLEN)
Lassic Branch	IRAWS 33 (SWAYBACK)



FIRE BEHAVIOR FORECAST

FORECAST NUMBER: 16	TYPE OF FIRE: Wildland Fire
FIRE NAME: Mad River Complex	OPERATIONAL PERIOD: Night
DATE / TIME ISSUED: Aug 9, 2015 1200	DATE: Aug 9-10, 2015
UNIT: Six Rivers NF / Mad River	SIGNED:  Steve Paes FBAN

INPUTS

WEATHER SUMMARY:

Mostly clear with smoke settling into valleys after 2100.

Temperatures: 45-55

Max. Relative Humidity: 80-90% valleys; 45-60% ridgetops.

Wind: Slope/Valley- Upslope 4-7 mph with gusts to 9 mph becoming downcanyon/downslope 4 mph after 2200.

Ridgetop Winds- West /Southwest 5-10 mph gusts to 18 mph early in the shift becoming south 3-6mph.

GENERAL:

-The fire is burning primarily timber Fuels with some brush and grass intermix. The primary carrier of surface fire is heavy forest litter with a shrub or small tree understory.

-Fire spread has been primarily topography driven and should continue again during tonight's shift. The predominant fire spread has been surface fire backing downhill. Roll out on steep slopes is contributing to rates of spread. Where flanking movement goes across slope, under unburned fuels, the fire can transition to head fire with short crown runs if ladder fuels are present. Torching and short duration crown fire runs may also develop where slope and winds align. Past significant runs were with slope and wind alignment from thunderstorm winds.

Rates of spread: Timber-head fire = 3-8ch/hr, backing fire= 1-3 ch/hr. Grass- head fire 20 ch/hr, backing fire 2ch/hr

Flame lengths: Timber-head fire= 7ft., backing fire= 2ft. Grass- head fire 4ft., backing fire 1ft.

Probability of Ignition (PIG) = 50% shaded fuels, 70% exposed fuel dropping to 10% during the shift.

Short range spotting occurs with light winds and moderate fire activity. Spotting distances of up to ½ mile have occurred with wind driven crown fire.

Dead fuel moisture contents: 1hr= 4% rising to 15% during the shift, 10hr = 5% , 100hr and 1000hr =10%

Live Fuel Moisture: Timber 150%, Shrubs 80%. Low fuel moisture levels in the aerial fuels will contribute to torching.

SPECIFIC:

All Divisions:

-Expect active burning during the early portion of the shift. Activity will diminish as fine fuels stop carrying fire due to rising humidity. Down and dead fuels will continue to burn during the shift. Any wind creates the opportunity for increased fire activity with short range spotting, torching, and short crown runs on steep slopes.

-Anticipate complete fuel consumption of larger fuels due to low fuel moistures. Stumps and roots have the potential to burn out and create stump holes that will be a hazard at night. Mopping up stump holes may be a challenge if you have to dig out the burning roots.

-Firing operations become ineffective 0100-0200 due to humidity recovery.

DIV AA & S: Lassic Fire and south side of the Gobbler Fire will have the most exposure to ridgetop winds.

DIV B/D: The Hwy. 36 corridor has the most exposure to downvalley winds due to higher elevations to the east draining down the Trinity Rv.

AIR OPERATIONS

The western portions of the Complex are more likely to have skies clear enough for air operations.

Sunset: 2020

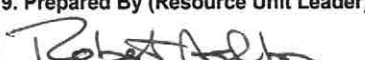
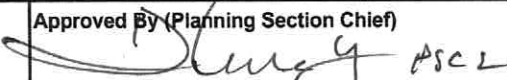
SAFETY

One of the common denominators of tragedy fire:

“When fire responds to topographic conditions and runs uphill.”

Alignment of topography and wind during the burning period should always be considered a trigger point to re-evaluate strategy and tactics.

Division/Group Assignment List (ICS 204 WF)

1. Incident Name:			3.			
MAD RIVER COMPLEX			Branch:		Division/Group: A/D/G	
2. Operational Period: NIGHT						
Date/Time From: 08/09/2015 1800 SUN		Date/Time To: 08/10/2015 0900 MON				
4. Operations Personnel						
OPERATIONS CHIEF				BRANCH DIRECTOR COREY ROSE		
DIVISION/GROUP SUPERVISOR JORDAN MCKNIGHT				AIR ATTACK SUPERVISOR		
5. Resources Assigned this Period						
Strike Team / Task Force / Resource Designator		LWD	Leader	Number Persons	Drop Off PT./Time	Pick Up PT./Time
ENGINE S/T - T1 - CA-XSC - 2311A E-53		08/14	RICHARD ALAMEDA;REGGIE	22	DP-15/1900	DP-15/0800
ENGINE - T6 - 001 - CENTRAL WILDFIRE - 763 E-184		08/14	PATRICK WILSON	3	DP-15/1900	DP-15/0800
ENGINE - T6 - PACIFIC HABITAT 66		08/14	DUSTIN STEERS	3	DP-15/1900	DP-15/0800
SOFR THOMAS FRANCIS DONOHOE O-32		08/18		1	DP-15/1900	DP-15/0800
SOFR DAVID RANDOLPH O-257		08/11		1	DP-15/1900	DP-15/0800
6. Control Operations/Work Assignments:						
Patrol and secure fireline along Hwy 36, Ruth Lake and Forest Glen. Assist adjoining divisions as needed. Use caution on 1S04 Road from Horse Ridge to Forest Glen snag hazards						
7. Special Instructions:						
Backhaul excess equipment and trash. Verify status of accountable property. USE COMMAND TO MAKE CONTACT WITH DAY DIVISIONS. Use caution around snags and flag as needed for safety.						
8. Division/Group Communication Summary						
Function	Channel	RX Frequency N/W	RX Tone/NAC	TX Frequency N/W	TX Tone/NAC	Mode
COMMAND	1	168.1000	0.0	170.4500	123.0	A
TACTICAL	4	166.5500	0.0	166.5500	123.0	A
AIR TO GROUND CMD	14	169.1500	0.0	169.1500	0.0	A
9. Prepared By (Resource Unit Leader)			Approved By (Planning Section Chief)		Date	Time
					08/08/2015	1300

Division/Group Assignment List (ICS 204 WF)

1. Incident Name:			3.				
MAD RIVER COMPLEX			Branch:		Division/Group: S/W		
2. Operational Period: NIGHT							
Date/Time From: 08/09/2015 1800 SUN		Date/Time To: 08/10/2015 0900 MON					
4. Operations Personnel							
OPERATIONS CHIEF				BRANCH DIRECTOR		COREY ROSE	
DIVISION/GROUP SUPERVISOR		ALAN HUSKINS		AIR ATTACK SUPERVISOR			
5. Resources Assigned this Period							
Strike Team / Task Force / Resource Designator		LWD	Leader		Number Persons	Drop Off PT./Time	Pick Up PT./Time
CREW - T2 - OC 25 C-44		08/10	JEREMY VANCE		19	DP30/1900	DP30/0700
ENGINE - T1 - 4805A		08/14	ERIC DEHART		22	DP30/1900	DP30/0700
ENGINE S/T - T3 - MAD RIVER 1 E-901		08/19	JIM OBERRITER		21	DP30/1900	DP30/0700
ENGINE- T3 - BLACKTIMBER 11 E-143		08/19	TED HEBRARD		1	DP30/1900	DP30/0700
ENGINE - T6 - LOGAN FD E-9		08/14	JASON GIBBONS		3	DP30/1900	DP30/0700
ENGINE - T6 - NORTH LOGAN - BRUSH 120 E-8		08/14	JON KELLER		3	DP30/1900	DP30/0700
SOFR SCOTT A BELKNAP O-116		08/19			1	DP30/1900	DP30/0700
6. Control Operations/Work Assignments:							
Conduct firing operations as directed in the area of the 01S06 Road . Patrol and mopup adjacent to the Van Duzen and the 01S06 Road throughout the remainder of the division.							
7. Special Instructions:							
USE COMMAND TO MAKE CONTACT WITH DAY DIVISIONS							
Use caution with numerous snakes and wildlife in fire area.							
8. Division/Group Communication Summary							
Function	Channel	RX Frequency N/W	RX Tone/NAC	TX Frequency N/W	TX Tone/NAC	Mode	
COMMAND	1	168.1000	0.0	170.4500	123.0	A	
TACTICAL	5	168.2375	0.0	168.2375	123.0	A	
AIR TO GROUND CMD	14	169.1500	0.0	169.1500	0.0	A	
9. Prepared By (Resource Unit Leader)			Approved By (Planning Section Chief)		Date	Time	
Robert Ashby			[Signature]		08/09/2015	1500	

Division/Group Assignment List (ICS 204 WF)

1. Incident Name:			3.			
MAD RIVER COMPLEX			Branch:		Division/Group:	
2. Operational Period: NIGHT			LASSIC		LASSIC	
Date/Time From: 08/09/2015 1800 SUN		Date/Time To: 08/10/2015 0900 MON				
4. Operations Personnel						
BRANCH DIRECTOR		COREY ROSE		DIVISION/GROUP SUPERVISOR		JAYSON W SMITH TROY MAGUIRE (T)
5. Resources Assigned this Period						
Strike Team / Task Force / Resource Designator		LWD	Leader	Number Persons	Drop Off PT./Time	Pick Up PT./Time
ENGINE - T6 - SMITHFIELD FD - B40 E-6		08/14	BRANDT PITCHER	3	DP-53/1900	DP-53/0700
DOZER - T2 - JW MORRISON 1 E-208		08/20	MATTHEW MORRISON	2	DP-53/1900	DP-53/0700
HEQB SAMUEL JAMES REYNOLDS O-219		08/22		1	DP-53/1900	DP-53/0700
SOFR SCOTT A BELKNAP O-116		08/19		1	DP-53/1900	DP-53/0700
6. Control Operations/Work Assignments:						
Patrol and mopup on the 01S07 Road to keep fire on the west side. Utilize dozer to support as needed throughout the Lassic fire area.						
SOFR IN AA SHARED WITH DIVISON S/W						
7. Special Instructions:						
Backhaul excess equipment and trash. Verify status of accountable property. USE COMMAND TO MAKE CONTACT WITH DAY DIVISIONS. Use caution around snags and flag as needed for safety.						
**CROOKS SPIKE CAMP IS SET UP NORTH OF DP60 ON VAN DUZEN ROAD IN DIVISION V V. JAMES JONES (925 519 6314) IS THE BASE CAMP MANAGER FOR THE SPIKE CAMP.						
8. Division/Group Communication Summary						
Function	Channel	RX Frequency N/W	RX Tone/NAC	TX Frequency N/W	TX Tone/NAC	Mode
COMMAND	1	168.1000	0.0	170.4500	123.0	A
TACTICAL	5	168.2375	0.0	168.2375	123.0	A
AIR TO GROUND CMD	14	169.1500	0.0	169.1500	0.0	A
9. Prepared By (Resource Unit Leader)			Approved By (Planning Section Chief)		Date	Time
<i>Robert Ashby</i>			<i>[Signature]</i> 1312		08/09/2015	1230

Division/Group Assignment List (ICS 204 WF)

1. Incident Name:				3.		
MAD RIVER COMPLEX				Branch:	Division/Group: B/F/FOREST GLEN SPG	
2. Operational Period: NIGHT						
Date/Time From: 08/09/2015 1800 SUN		Date/Time To: 08/10/2015 0900 MON				
4. Operations Personnel						
OPERATIONS CHIEF				BRANCH DIRECTOR		
DIVISION/GROUP SUPERVISOR				AIR ATTACK SUPERVISOR		
5. Resources Assigned this Period						
Strike Team / Task Force / Resource Designator	LWD	Leader	Number Persons	Drop Off PT./Time	Pick Up PT./Time	
UNSTAFFED						
6. Control Operations/Work Assignments:						
7. Special Instructions:						
8. Division/Group Communication Summary						
Function	Channel	RX Frequency N/W	RX Tone/NAC	TX Frequency N/W	TX Tone/NAC	Mode
COMMAND						
TACTICAL						
LOGISTICS						
AIR TO GROUND						
9. Prepared By (Resource Unit Leader)			Approved By (Planning Section Chief)		Date	Time
<i>Gary Thompson</i>			<i>Steve G. ...</i>		08/09/2015	1200

Division/Group Assignment List (ICS 204 WF)

1. Incident Name:			3.			
MAD RIVER COMPLEX			Branch:		Division/Group: RUTH LAKE SPG	
2. Operational Period: NIGHT						
Date/Time From: 08/09/2015 1800 SUN		Date/Time To: 08/10/2015 0900 MON				
4. Operations Personnel						
OPERATIONS CHIEF				BRANCH DIRECTOR		COREY ROSE
DIVISION/GROUP SUPERVISOR				AIR ATTACK SUPERVISOR		
5. Resources Assigned this Period						
Strike Team / Task Force / Resource Designator		LWD	Leader	Number Persons	Drop Off PT./Time	Pick Up PT./Time
UNSTAFFED						
6. Control Operations/Work Assignments:						
7. Special Instructions:						
8. Division/Group Communication Summary						
Function	Channel	RX Frequency N/W	RX Tone/NAC	TX Frequency N/W	TX Tone/NAC	Mode
COMMAND						
TACTICAL						
LOGISTICS						
AIR TO GROUND						
9. Prepared By (Resource Unit Leader)			Approved By (Planning Section Chief)		Date	Time
Gary Thompson			[Signature]		08/09/2015	1200



Safety Message

INCIDENT: Mad River Complex

DATE: 08-09/10-2015

TIME: 1800 – 0900 Night

QR /article on danger trees

Situation and Environment Awareness

Make sure you know who you are working for and what your assignment is

Listen to the briefing, Ask questions if something is not clear

Confirm you have good communications with your Division

Conduct a radio check before you leave camp

Understand leader's intent for this operational period

Make sure you know how to activate the Incident Emergency Plan- ICS 206

Listen to weather forecast and be watchful for changing conditions that were not forecasted

Prepare for unexpected events, are strategy and tactics working and is there a realistic expectation for success

Ask yourself in all your actions the question, " what if " this failed what is my fall back plan

When you get to your assignment:

Provide an onsite safety briefing with your crew, strike team or resources,

Take weather and make your own prediction, stay dialed in on changes,

Provide for safety first by following Standard Fire Orders and Watchouts,

Are Lookouts, Communications, Escape Routes and Safety Zones in place and validated

Scout the fire environment that you are working in.

Make sure you are prepared to engage; monitor the fire environment, be proactive, and make adjustments.

BACK TO THE BASICS: Long and short distance spotting...do a complete size up when assigned to a spot fire. On your way to this spot fire you should be sizing-up the weather, fuels, topography and the condition of your crew. Size-up is a continual and ongoing process.

DRIVER SAFETY

- Inspect your vehicle before driving
- Avoid distracted driving , No texting, reading text or cell phone usage when driving
- Drive slowly on all roads
- Be aware of wildlife and livestock on roads (black cows are in area)
- Don't drive tired, pull over and take a break
- Always use your headlights
- Everyone uses a seatbelt

SNAGS AND HAZARD TREES

- All trees, especially large trees are potentially dangerous. Make hazard trees known to all
- Trees can fall suddenly and unexpectedly
- Green Trees and fire impacted trees are falling on this fire
- Minimize your exposure time and resources around hazard trees
- Avoid night operations in areas with snags
- Read the 215A in your IAP
- Have a conversation with your crew regarding indicators of weakened and dangerous trees
- Perform risk management and refer to the IRPG (2014) pages 1 and 22-23
- Never fall snags at night
- Watch and identify trees that may fall on roads

SAFETY TEAM :

Marty Hamel, Charlotte Jordan,

Dave Morton, Dave Vitwar

Charlotte Jordan SOP1(+)

Mad River Complex CA-SRF-1433 - August 9-10, 2015 Night Shift

Location	Hazard	Control or Abatement Action
ALL DIV	Night Operations	<ul style="list-style-type: none"> * Maintain high visibility in work area and wear vest while in roadway. * Use glow sticks to mark hazards. * Ensure personnel have a personal light (headlamp) * Watch for signs of fatigue * Take breaks away from areas of known hazard * Scout and evaluate all areas of work prior to engagement * Watchout Situation – In country not seen in daylight
B, D, F A A, V V, YY Contingency Group	Heavy Equipment Operations	<ul style="list-style-type: none"> *Ensure communications are established with operator prior to work * Maintain a 50'-100' exclusion area around equipment or 2 ½ times the canopy height * Use headlamp and/or glow sticks so the operator can see you * Avoid working below equipment where rolling material could jeopardize safety *Before moving or transporting equipment identify low hanging wires, ensure there is clearance
ALL DIV	Hazard Trees	<ul style="list-style-type: none"> * Follow "Hazard Tree Safety" guidelines, IRPG (2014) page 22&23 * Post lookouts in mop-up areas with high concentrations of danger trees * Don't park vehicles or take breaks in areas with high concentrations of hazard trees * Establish "Decision Points" for disengagement during high wind events *Maintain situational awareness
ALL DIV	Driving and Traffic	<ul style="list-style-type: none"> * Practice "Defensive Driving" techniques* Use spotters when backing * Honk horn to alert personnel when backing * Always use headlights * Drive at posted or slower speed limits as conditions warrant * Be on the alert for opposing traffic that may be in your lane * Watch out on narrow, winding roads that may have steep drop offs * Use chock blocks, turn wheels into hill * Seat Belts are mandatory * No texting while driving * Watch for wildlife and livestock on all roads * Be prepared for sudden, unexpected stops
DIV A/D	Power Utilities and Gas Lines	<ul style="list-style-type: none"> * Notify all personnel of downed electrical lines * Refer to the IRPG (2014) pg. 24-25 for Power Line Safety * Always treat downed wires as energized * Identify and avoid high-tension transmission lines * Identify and avoid high pressure natural gas lines * Identify and avoid damaged gas service near structures * Be aware of utility restoration in your work area
DIV B, D, F, G, S, W, AA, V V, LL, YY	Potential for Spotting and Severe Fire Behavior	<ul style="list-style-type: none"> * Share weather observations and IMET updates with all personnel assigned to division * Establish "Decision Points" to withdraw * Ensure LCES is in place (Lookout, Communications, Escape route and Safety Zone) * Use "Risk Management" process prior to taking action, refer to IRPG (2014) pg.1 * Review "Severe fire behavior potential" IRPG (2014) pg. 68 * Maintain adequate escape routes and safety zones; continue to re-evaluate throughout the shift * Factor in drought conditions and local ERC prior to operations * Base all actions on past, current and expected behavior of the fire
ALL DIV	Fireline Hazards and Mop Up	<ul style="list-style-type: none"> * Do not work directly above or below personnel during mop-up operations * Watch for falling, rolling debris on steep slopes* Maintain 8'-10' spacing when working & walking * Alert crew personnel of rolling debris by yelling to affected individuals * Position debris that could roll vertically on slope * Watch for weakened trees that may pose danger or fall * Scout areas for mop up prior to work * Wear appropriate PPE * Identify and make known burning stumps or roots that may cave in
ALL DIV	Fatigue, Overexertion dehydration and heat related illness	<ul style="list-style-type: none"> * Drink fluids throughout operational period (water and Gatorade) not energy drinks * Rotate crews out of smoky areas *Follow work / rest guidelines * Set a reasonable work pace and allow adequate rest breaks * Use buddy system to monitor personnel of heat related and fatigue issues * For Heat Related Injuries refer to IRPG (2014) pg.103
ALL DIV	Marijuana Plantations	<ul style="list-style-type: none"> * Leave area quietly in the same direction that you entered and notify DIVS * Watch for hazardous materials and be aware of possible traps in the grow area * Use extreme caution during encounters * Individuals guarding plantation may be armed * Grower may become confrontational, maintain calm demeanor and leave area
ALL DIV	Communication	<ul style="list-style-type: none"> * Maintain communication with aviation resources and suppression organization * Ensure all know frequency and protocol for contacting resources * Utilize the ICS 205 and 204
AA, V V, YY, B D, F, S, W	Firing Operations & Devices	<ul style="list-style-type: none"> * Only personnel trained in the use of each device will be authorized to use firing equipment * Ensure all personnel are aware of firing operation that may affect them * Wear appropriate PPE * Ensure aerial/ground ignition plans have been adequately developed and personnel are briefed
ALL DIV	Environmental Hazards	<ul style="list-style-type: none"> * Be alert for rattlesnakes, watch footing and hand placement around rocks * Check yourself for ticks, watch for bees and other insects that bite or sting * Be alert for bears, cougars and other wildlife * Poisonous plants - identify plants and avoid; change and wash clothing and shower frequently
Lassic Branch	Naturally Occurring Asbestos	<ul style="list-style-type: none"> * Avoid disturbing areas of Serpentine rock formations * Avoid dusty conditions to reduce exposure * Limit dust generating activities Avoid or minimize tracking dust into vehicles

INCIDENT RADIO COMMUNICATIONS PLAN

Incident Name

Mad River Complex SRF-001433

Date/Time Prepared

8/9/15, 2000 hrs

Operational Period Date/Time

8/9-10/15, 1800-0900

Zn / Ch	Function	Channel Name/Trunked Talkgroup	Assignment	RX Freq	RX Tone/NAC	TX Freq	TX Tone/NAC	Mode A, D, M	Remarks
1	Command	CMD 1	All Divisions	168.1000	0.0	170.4500	123.0	A	Medical
2	Command	CMD 2	All Divisions	170.0125	0.0	165.2500	123.0	A	Medical
3	Command		Future use						
4	Tactical	TAC 4	Night Div./A/D/G	166.5500	123.0	166.5500	123.0	A	
5	Tactical	TAC 5	Night Div. Lassic/S/W	168.2375	123.0	168.2375	123.0	A	
6	Tactical	TAC 6	unassigned	166.7250	123.0	166.7250	123.0	A	
7	Tactical	TAC 7	unassigned	166.7750	123.0	166.7750	123.0	A	
8	Tactical	TAC 8	unassigned	168.2500	123.0	168.2500	123.0	A	
9	Tactical	TAC 9	unassigned	159.4725	123.0	159.4725	123.0	A	
10	Tactical	TAC 10	unassigned	154.2875	123.0	154.2875	123.0	A	
11	Tactical	TAC 11	unassigned	154.3025	123.0	154.3025	123.0	A	
12	Dispatch	SRF-2 FN	IA & Emergency Backup	168.7250	0.0	170.1250	103.5	A	Tone 8: Local Dispatch - IA and emergency backup
13	Tactical	CALCORD	Medical	156.0750	156.7	156.0750	156.7	A	Life Flight, etc.
14	Air - Ground CMD	A-G 1	All Divisions	169.1500	0.0	169.1500	0.0	A	
15	Air - Ground TAC	N/A	N/A		0.0		0.0	A	
16	Emergency only	GUARD	All Divisions	168.6250	0.0	168.6250	110.9	A	AIR GUARD - emerg. use only - Tone 1
17									
18									
19									
20	Emergency only	GUARD	All Divisions	168.6250	0.0	168.6250	110.9	A	AIR GUARD - emerg. use only - Tone 1

Incident Location

County Trinity

Latitude, Longitude

N 40 12.334, W 123 17.844

Prepared By (Communications Unit Leader)

Greg Ely

Greg Ely, COML

Deviation is assumed to be narrow band unless otherwise noted in the remarks. Mode refers to either "A" (analog), "D" (digital) or "M" (mixed mode).

1/14/14 v.5

MEDICAL PLAN

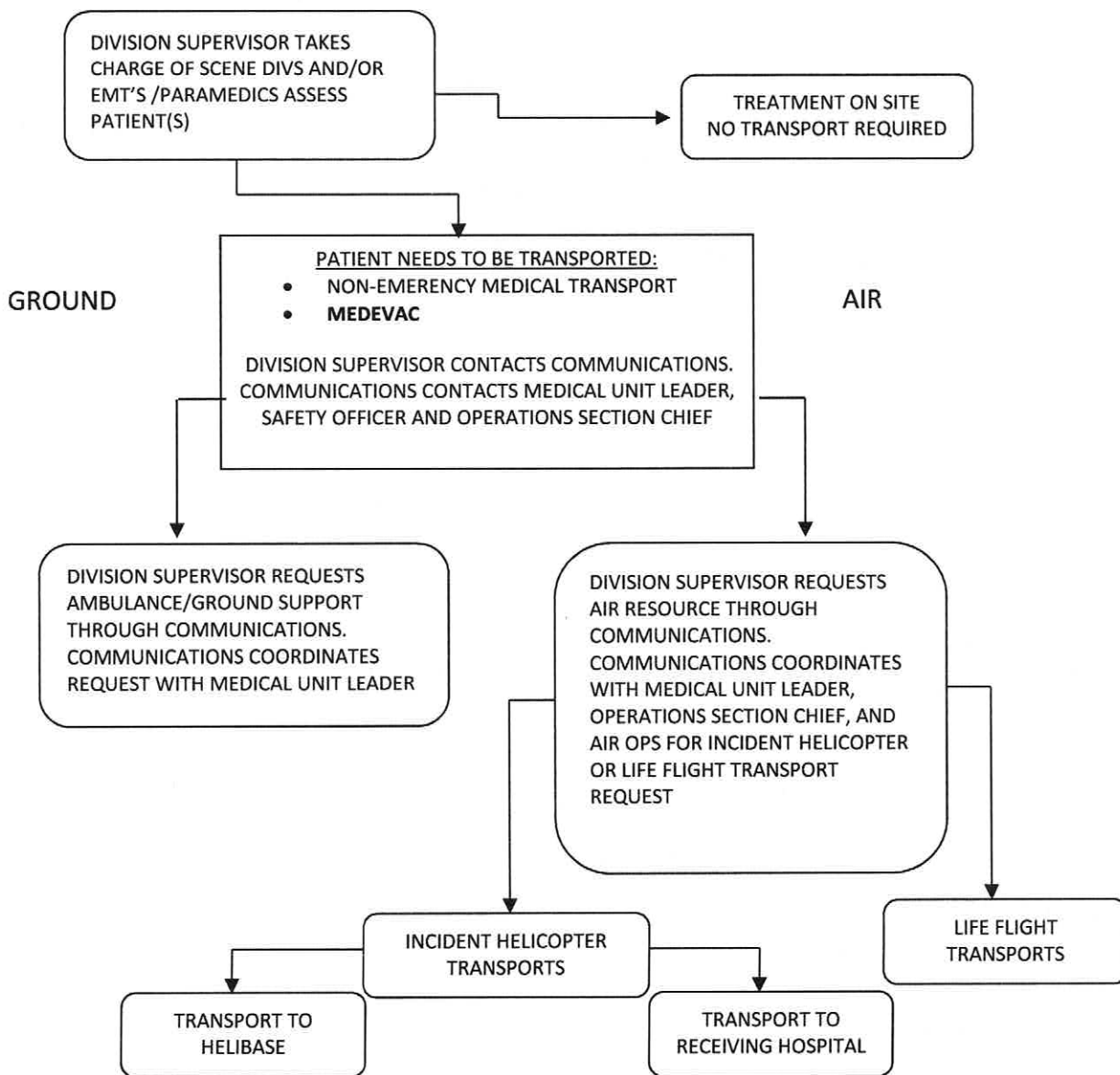
1. Incident/Project Name		2. Operational Period				
Mad River Complex		Date/Time 08/09-10/2015 – 1800-0900				
2. Aid Station						
Name	Complete Address	Phone & EMS Frequency	Advanced Life Support (ALS) Yes No			
Frontline Medical	Mad River ICP Flying AA Ranch Ruth Lake, CA	530-927-8133	XX			
3. Ambulance Services						
Name	Complete Address	Phone & EMS Frequency	Advanced Life Support (ALS) Yes No			
Ukiah Medic 9115	Mad River ICP	707-513-0004	XX			
Trinity County Life Support Medic 305	DP 53-DAY/Crook Creek Spike- NIGHT	530-623-2500	XX			
Southern Area Trinity Rescue	153 A Van Duzen Rd. Mad River, CA	707-574-6421			XX	
4. Air Ambulance Services						
Name	Phone	Type of Aircraft & Capability				
CAL FIRE H102 Day Hoist	707-726-1268	B205A++ Hoist				
CHP H14/H16 Day Hoist	530-242-3210	A Star B3 Hoist				
CA ANG Guard 825 North Ops Hoist/Extraction Helo	530-243-1434	H60 (Blackhawk) NVG/Hoist				
PHI Med 43/REACH	800-597-9571	EC 135 IFR/NVG B407 NVG				
5. Hospitals						
Name Complete Address	GPS Datum – NAD 83 Coordinate Standard Degrees Decimal Minutes DD° MM.MMM' N - Lat DD° MM.MMM' W - Long	Travel Time Air Gnd	Phone	Helipad Yes No	Level of Care Facility	
St Joseph Hospital 2700 Dolbeer St Eureka, CA 95501	Lat: N 40 47.02	20 Min	2.5 HRS	707-269-4250 707-442-8646	X	Level II Trauma Center
	Long: W 124 23.67					
	VHF:					
Shasta Regional Medical Center 110 Butte St. Redding, CA 9600	Lat: N 40 35.18	30 Min	3 HRS	530-244-5353 530-243-4042	X	<input type="checkbox"/>
	Long: W122 23.13					
	VHF:					
Redwood Memorial Hospital 3300 Renner Dr. Fortuna, CA 95540	Lat:	2.5 HRS		707-725-3361	<input type="checkbox"/>	X
	Long:					
	VHF:					
Mercy Medical Center 2175 Rosaline Redding, CA 96001	Lat: N 40 34.29	30 Min	3 HRS	530-225-7201 530-242-4401	X	<input type="checkbox"/>
	Long: W 122 23.67					
	VHF:					
UC Davis Medical Center 2315 Stockton Blvd Sacramento, CA 95817	Lat: N 38 33.17	1.5 HRS	5 HRS	916-734-3790 916-734-5669	X	<input type="checkbox"/>
	Long: W 121 27.05					
	VHF:					
6. Prepared By (Medical Unit Leader)						
7. Date/Time		8. Reviewed By (Safety Officer)		9. Date/Time		
Robert Russell MEDL <i>[Signature]</i>		Marty Hamel SOF1 <i>[Signature]</i> For: Charlotte Jordan SOF1A		08/09/2015 1200		

Initiate care with available resources at scene and notify DIVS when an injury occurs.

The DIVS, or designee, shall coordinate the incident and direct necessary actions. Take the following actions:

1. Determine the nature of the emergency.
2. If the emergency is a medical injury/illness, determine if the injury/illness is life threatening.
3. If the injury is life threatening, then clear designated frequency for emergency traffic.
4. Identify the on-scene point of contact by position.
5. Contact the Medical Unit Leader immediately.
6. Identify number injured, patient assessment(s) and location (geographic and/or GPS coordinates).
7. Identify on-scene medical personnel by position and last name (i.e. EMT Jones).
8. Identify preferred method of patient transport.
9. Determine any additional resources or equipment needed.

Continually evaluate the Evacuation Plan, develop contingencies in the event the first plan is not effective.



Medical Incident Report					
FOR ALL MEDICAL EMERGENCIES: IDENTIFY ON SCENE INCIDENT COMMANDER BY NAME AND POSITION AND ANNOUNCE "MEDICAL EMERGENCY" TO INITIATE RESPONSE FROM IMT COMMUNICATIONS/DISPATCH.					
Use items one through nine to communicate situation to communications/dispatch.					
1. CONTACT COMMUNICATIONS/DISPATCH <i>Ex: "Communications, Div. Alpha. Stand-by for Priority Medical Incident Report." (If life threatening request designated frequency be cleared for emergency traffic.)</i>					
2. INCIDENT STATUS: <i>Provide incident summary and command structure.</i>					
Nature of Injury/Illness			<i>Describe the injury (Ex: Broken leg with bleeding)</i>		
Incident Name			<i>Geographic Name + "Medical" (Ex: Trout Meadow Medical)</i>		
Incident Commander			<i>Name of IC</i>		
Patient Care			<i>Name of Care Provider (Ex: EMT Smith)</i>		
3. INITIAL PATIENT ASSESSMENT: <i>Complete this section for each patient. This is only a brief, initial assessment. Provide additional patient info after completing this 9 Line Report.</i>					
Number of Patients:	Male / Female	Age:	Weight:		
Conscious? <input type="checkbox"/> YES <input type="checkbox"/> NO = MEDEVAC!					
Breathing? <input type="checkbox"/> YES <input type="checkbox"/> NO = MEDEVAC!					
Mechanism of Injury: <i>What caused the injury?</i>					
Lat/Long (Datum WGS84) <i>Ex: N 40° 42.45' x W 123° 03.24'</i>					
4. SEVERITY OF EMERGENCY, TRANSPORT PRIORITY					
SEVERITY			TRANSPORT PRIORITY		
<input type="checkbox"/> URGENT-RED Life threatening injury or illness. <i>Ex: Unconscious, difficulty breathing, bleeding severely, 2° – 3° burns more than 4 palm sizes, heat stroke, disoriented.</i>			Ambulance or MEDEVAC helicopter. Evacuation need is IMMEDIATE.		
<input type="checkbox"/> PRIORITY-YELLOW Serious Injury or illness. <i>Ex: Significant trauma, not able to walk, 2° – 3° burns not more than 1-2 palm sizes.</i>			Ambulance or consider air transport if at remote location. Evacuation may be DELAYED.		
<input type="checkbox"/> ROUTINE-GREEN Not a life threatening injury or illness. <i>Ex: Sprains, strains, minor heat-related illness.</i>			Non-Emergency. Evacuation considered Routine of Convenience.		
5. TRANSPORT PLAN:					
Air Transport: (Agency Aircraft Preferred)					
<input type="checkbox"/> Helispot		<input type="checkbox"/> Short-haul/Hoist		<input type="checkbox"/> Life Flight	
Ground Transport: Click here to enter text.					
<input type="checkbox"/> Self-Extract		<input type="checkbox"/> Carry-Out		<input type="checkbox"/> Ambulance	
6. ADDITIONAL RESOURCE/EQUIPMENT NEEDS:					
<input type="checkbox"/> Paramedic/EMT(s)		<input type="checkbox"/> Crew(s)		<input type="checkbox"/> SKED/Backboard/C-Collar	
<input type="checkbox"/> Burn Sheet(s)		<input type="checkbox"/> Oxygen		<input type="checkbox"/> Trauma Bag	
<input type="checkbox"/> Medication(s)		<input type="checkbox"/> IV/Fluid(s)		<input type="checkbox"/> Cardiac Monitor/AED	
<input type="checkbox"/> Other (i.e. splints, rope rescue, wheeled litter)					
7. COMMUNICATIONS:					
Function	Channel Name/Number	Receive (Rx)	Tone/NAC *	Transmit (Tx)	Tone/NAC *
<i>Ex: Command</i>	<i>Forest Rpt, Ch. 2</i>	<i>168.3250</i>	<i>110.9</i>	<i>171.4325</i>	<i>110.9</i>
COMMAND					
AIR-TO-GRND					
TACTICAL					
*(NAC for digital radio system)					
8. EVACUATION LOCATION:					
Lat/Long (Datum WGS84) <i>EX: N 40 42.45' x W 123 03.24'</i>					
Patient's ETA to Evacuation Location:					
Helispot/Extraction Size and Hazards:					
9. CONTINGENCY:					
Considerations: <i>If primary options fail, what actions can be implemented in conjunction with primary evacuation method? Be thinking ahead...</i>			REMEMBER: Confirm ETA's of resources ordered Act according to your level of training Be Alert. Keep Calm. Think Clearly. Act Decisively.		

COME TO FINANCE

8/9/2015

C-25 Iron Mountain

C-3 North Pacific Forestry

C-44 OC 25 Mammoth Crew

C- 57 MAD RIVER

C- 43 Inyo Reg,

E- 136 West Metro

E- 135 Deer Mountain FPD

E-211 N. State Equip

E-73.5 Sedona Fire

E-18 LNF WT3 (E-256)

E-68 Frontline Medical

E-1 Engine 453-NV-HTF3

E-2.1 WIF –E13

E-73.7 Staples/Briones

E-212 Let er Buck Trucking

O- 115 Gary Holsten

O-116 Scott Belknap

O-283 NORTH ZONE FALLERS

O-47 Pridham, Art

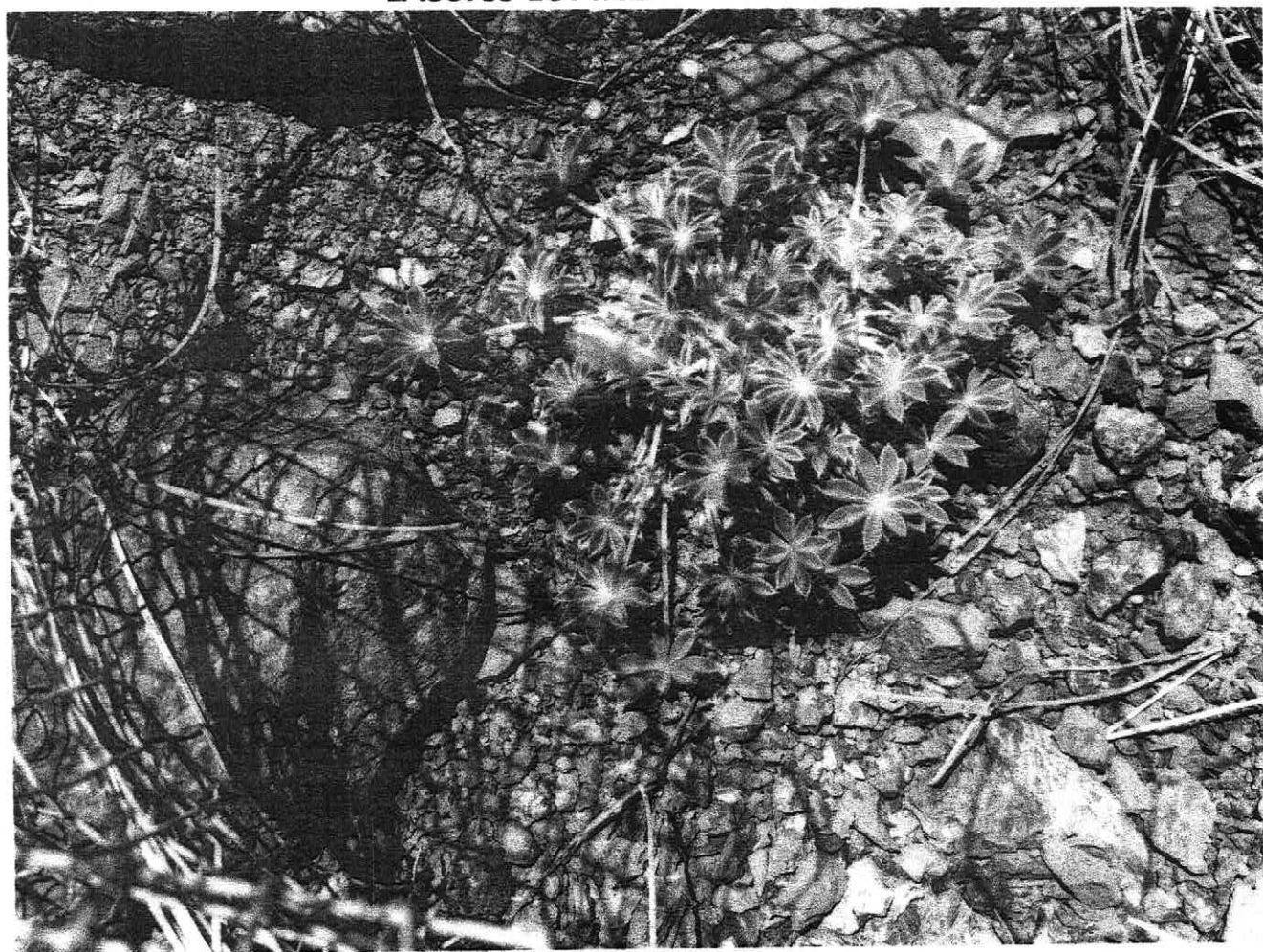
O- 274 Robert Martin

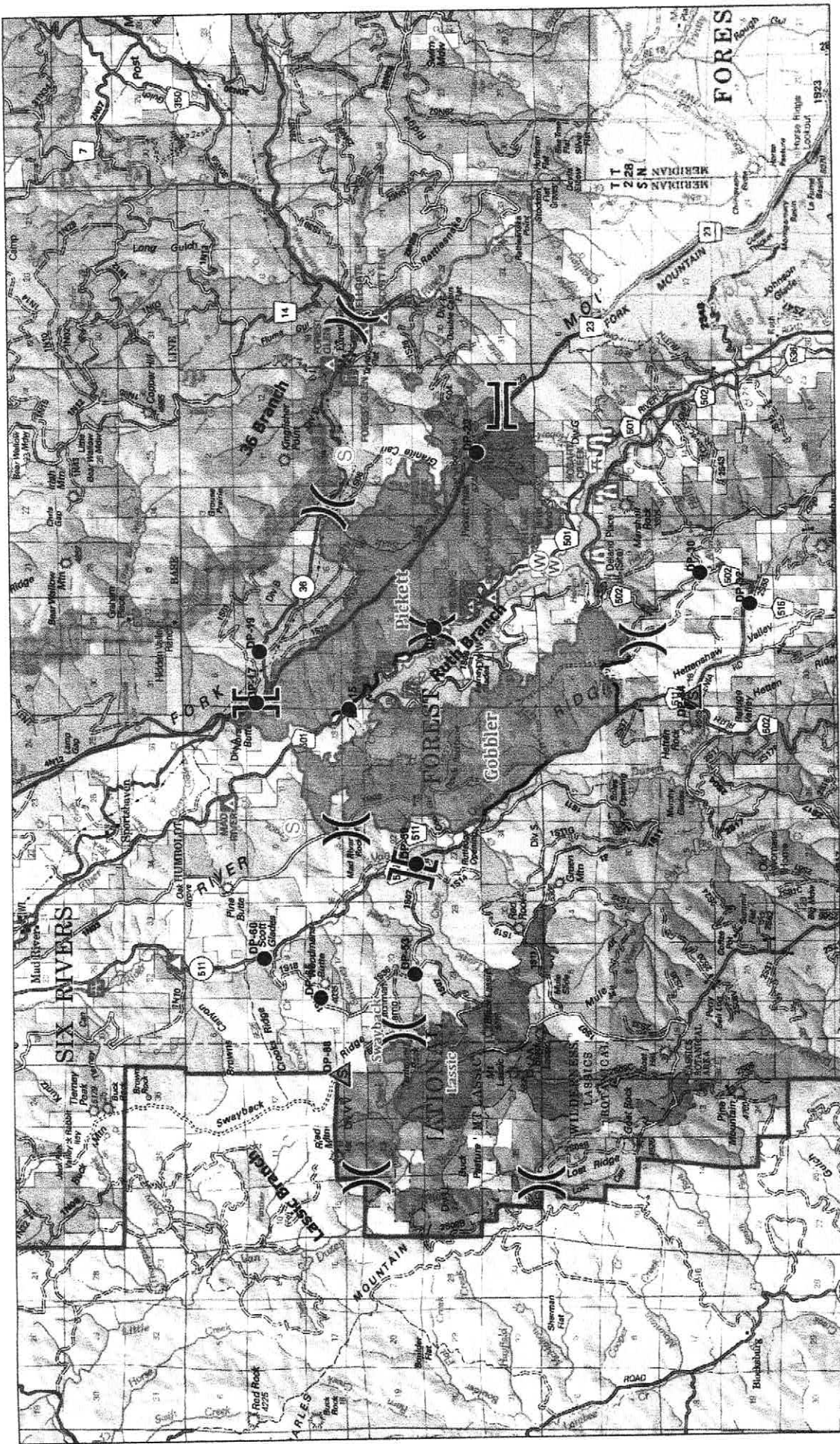
O- 280 Randy Shavlis

O-242 Adam McCullough



LASSICS LUPINE





- Drop Point
- S Staging Area
- W Water Source
- ▭ Fire Perimeter
- Completed Line
- ⌋ Division
- ⌋ Branch



**TRANSPORTATION
MAP**

Mad River Complex
CA-SRF-1433
August 6, 2015

FLYING DOUBLE A RANCH

NO ACCESS

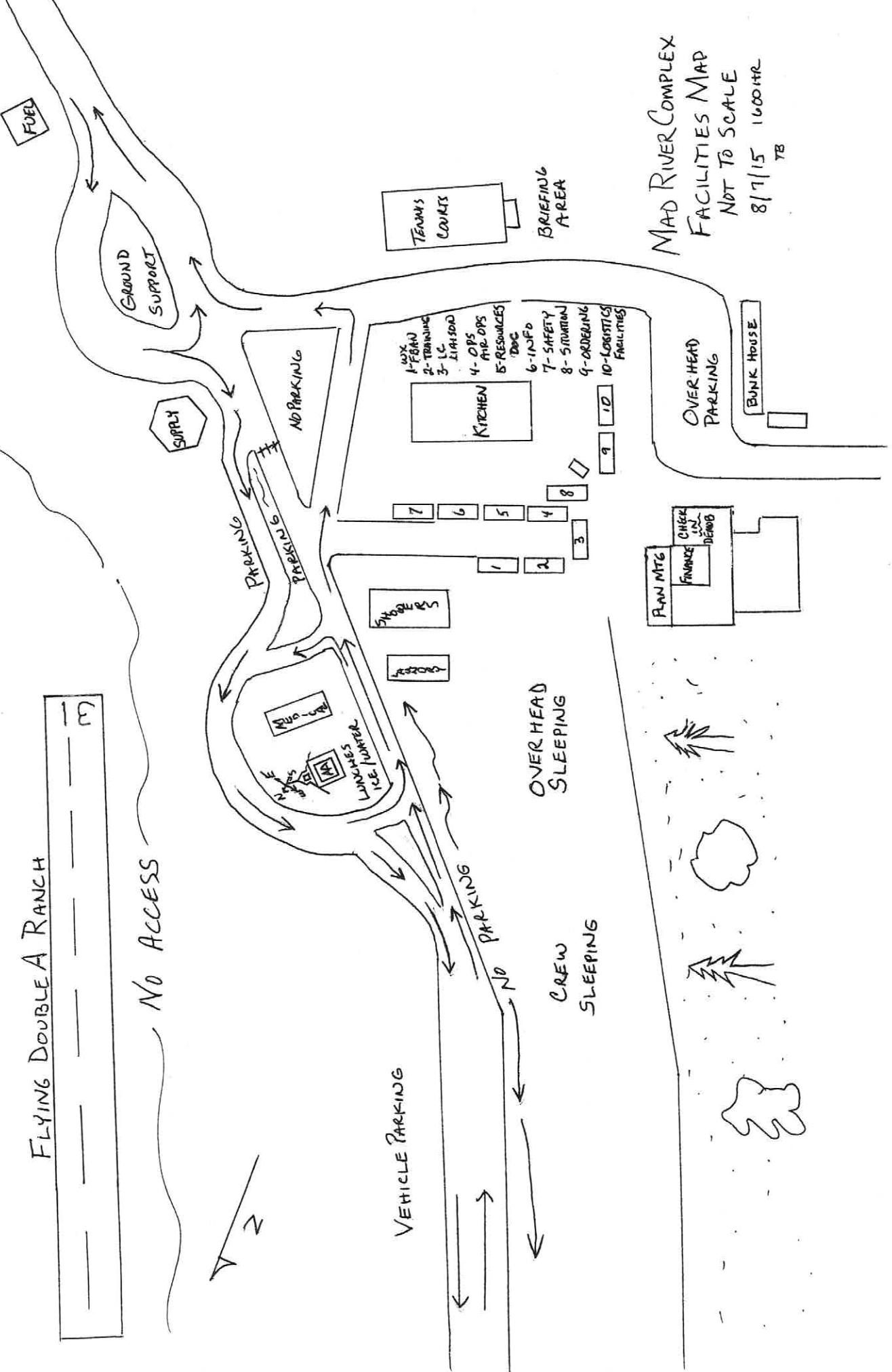
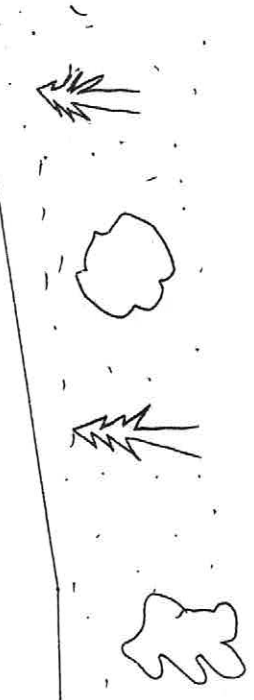


VEHICLE PARKING

NO PARKING

OVER HEAD SLEEPING

CREW SLEEPING



MAD RIVER COMPLEX
FACILITIES MAP
NOT TO SCALE
8/7/15 1600HR
TB

TEAMS COURTS

BRIEFING AREA

OVER HEAD PARKING

BUNK HOUSE

- 1- PLAN
- 2- TRAINING
- 3- LOGISTICS
- 4- OPS
- 5- RESOURCES
- 6- INFO
- 7- SAFETY
- 8- SITUATION
- 9- COORDINATING
- 10- LOGISTICS FACILITIES

KITCHEN

SHOWERS

RESTROOMS

MAD CAMP

LUNCHES
ICE/WATER

PLAN MTG
FINANCE
CHECK IN
DEMOB

SUPPLY

NO PARKING

PARKING

PARKING

FUEL

GROUND SUPPORT

Current as of 8-Aug-15

Mad River Complex Phone List

	Mad River Complex Hard Lines	FAX
Communications	574-6058	
Check in / Demob	574-6240	574-6242
Finance	574-6246	574-6250
IC	574-6094	
Info	574-6289	
Logistics	574-6063	
Medic	574-6056	
Air Ops	574-6292	
Ordering	574-6263/6191	574-6306
Plans	574-6230	

Incident Issued Cell Phones

First	Last	Number
Tim	Baal	925-872-8547
John	Badaracco	925-817-9943
Jacque	Beidl	925-407-6366
Lewis	Brostrom	925-407-6360
Marie	Butler	925-588-6854
Tom	Donohoe	925-588-6741
Greg	Ely	925-872-8578
Jan	Flemming	925-324-9188
Teresa	Fork	925-588-6109
Wally	Grogan	925-872-8559
Scott	Hagerty	925-588-6845
James	Jones	925-519-6314
Steve	Kliest	925-817-9856
Jonathon	Lee	925-872-8557
Rick	Leuck	925-407-6361
Steve	Paes	925-872-8562
Mark	Savage	925-872-8556
Carl	Schwope	925-588-6818
Jerome	Skraba	925-407-7832
Tracy	Steman	925-324-9456
Larry	Stephens	925-407-7004
Bob	Summerfield	925-872-8568
Steve	Watkins	925-407-6352

UNIT LOG	1. Incident Name	2. Date Prepared	3. Time Prepared
	4. Unit Name/Designators	5. Unit Leader (Name and Position)	6. Operational Period

7. Personnel Roster Assigned

Name	ICS Position	Home Base

8. Activity Log

Time	Major Events

9. Prepared by (Name and Position)	
------------------------------------	--