

*** * CORRECTED * ***

GASQUET COMPLEX

INCIDENT ACTION PLAN

OPERATIONAL PERIOD

AUG 5, - Aug 6, 2015

0600-0600



"Adapt...Improvise...and Overcome"



CA-SRF-001488

P5JOPQ

INCIDENT OBJECTIVES (ICS 202)

| | | | |
|---|-------------------------------|--|------------------------------------|
| 1. Incident Name: Gasquet Complex | 2. Operational Period: | Date From: 08/04/15 Time From: 0800 | Date To: 08/04/15 Time To: 1600 |
|---|-------------------------------|--|------------------------------------|

3. Objective(s):

Strategic Framework: The framework for the Gasquet Complex strategic plan consists of using a combination of direct attack where feasible, otherwise indirect using natural barriers. A key element is flexibility and the ability to apply the right resource to the right task at the right time. Fireline will be constructed only where feasible and safe to do so.

Leader's Intent: Provide the highest level of customer services to all involved with or impacted by the Gasquet Complex. All incident personnel should be prepared to take the appropriate actions regarding:

- Personal interactions both inside and outside the incident management organization.
- Personal safety and the safety of others.
- An incident-within-an-incident.

Objectives:

1. Provide for firefighter and public safety by ensuring LCES is evaluated using sound risk management principles.
2. Maintain and build cooperator and stakeholder relationships.
3. Suppress fires while not exposing firefighters or aircraft to unnecessary risks.
4. Identify and protect Native American traditional areas and other sensitive cultural and historic sites.

4. Operational Period Command Emphasis:

Utilize suppression strategies commensurate with values at risk. Implement tactics which increase the probabilities of success while holding existing containment.

General Situational Awareness

When working in steep country where the potential for rapid rates of spread exist, establish safety zones and escape routes and make them known.


5. Site Safety Plan Required? Yes No

Approved Site Safety Plan(s) Located at: _____

6. Incident Action Plan (the items checked below are included in this Incident Action Plan):

| | | |
|-----------------------------------|----------------------------------|--------------------------------------|
| X ICS 203 | <input type="checkbox"/> ICS 207 | <u>Other Attachments:</u> |
| X ICS 204 | <input type="checkbox"/> ICS 208 | |
| X ICS 205 | X Map/Chart | X <u>Safety Messages / 215A</u> |
| <input type="checkbox"/> ICS 205A | X Weather Forecast/Behavior | X <u>Incident within an Incident</u> |
| X ICS 206 | | |

7. Prepared by: Name: Steve Abbott Position/Title: PSC2

8. Approved by Incident Commander: Name: Dave Kelly Signature: 

| ORGANIZATION ASSIGNMENT LIST | | Operations Section | |
|--|--|---|---------------------------------------|
| 1. Incident Name | | Chief - Field | Nickie Washington / Darrell Miller |
| Gasquet Complex | | Chief - Planning | Matt Conklin / Aaron Thompson (T) |
| 2. Date | | a. Divisions/Groups | |
| 08/04/2015 | 3. Time | Division C (Coon Fire) | Todd McDivitt / Brian Berry (T) |
| | 2100 | Division E (Bear Fire) | Kyle Jacobson / John Owings (T) |
| 4. Operational Period | | Division H (Williams Fire) | UNSTAFFED |
| DAY 08/05 to 08/06 0600 - 0600 | | Division L (Peak Fire) | Candice Kutrosky / Paul Mandolini (T) |
| 5. Incident Commander and Staff | | Division V (Summit Fire) | UNSTAFFED |
| Incident Commander | Dave Kelly | Division W (Feeder Fire) | 4601 Jeff Webb / Albert Ward (T) |
| Deputy | Dan Felix | b. Branch II - Divisions/Groups | |
| Safety Officer | James Aragon / John Bates / Fred Hernandez (T) | Branch Director | |
| Information Officer | Jim Wilkins / Bob Poole / Chon Bribiescas (T) | Deputy | |
| Liaison Officer | Larry Lavogue 909-855-5756 | Division/Group | |
| 6. Agency Representatives | | Division/Group | |
| Agency | Name | Division/Group | |
| USFS | Dave Palmer | Division/Group | |
| Gasquet VFD | Nick Karanopoulos | Division/Group | |
| CAL EMA | John Salvate | Division/Group | |
| | | c. Branch III - Divisions/Groups | |
| | | Branch Director | |
| 7. Planning Section | | Deputy | |
| Chief | Steve Abbott | Division/Group | |
| Deputy | Dave Lattimore | Division/Group | |
| Resources Unit | Bill Kershaw / Kyle Hauducoeur / Nancy Masters / Joe Scuri (T) | Division/Group | |
| Situation Unit | Ken VanWig / Gordon Tamplin (T) | Division/Group | |
| Documentation Unit | | Division/Group | |
| Demobilization Unit | Tim Knorr | d. Air Operations Branch | |
| Computer Specialist | Chuck Vertrees | Air Operations Branch Director | Ted Visser |
| GISS | Richard Murillo / Dawn Hutchinson / Angie Saldidar (T) | Air Attack Supervisor | |
| Fire Behavior | Byron Kimball | Air Support Supervisor | Galen Young |
| <i>Training Specialist</i> | <i>Anna Hutchinson</i> | Helicopter Coordinator | |
| | | Air Tanker Coordinator | |
| | | 10. Finance Section | |
| 8. Logistics Section | | Chief | Debbie York |
| Chief | Eric Sweetman | Deputy | |
| Deputy | | Time Unit | Sharon Makosky / Deanna Thompson (T) |
| Supply Unit | Evan Tiss / David Whitney | Procurement Unit | |
| Facilities Unit | Steve King / Art Curley / Doug Winn (T) | Compensation/Claims Unit | |
| Ground Support Unit | Chris Haley / Ron Noordman | Cost Unit | |
| Communications Unit | Dave Larkin / Chris Perry (T) | Prepared by (Resource Unit Leader) | |
| Medical Unit | Gena Fowlkes | Nancy Masters | |
| Security Unit | | | |
| Food Unit | Rick Waite | | |

Spot Forecast #2 for Gasquet Complex Fire
National Weather Service Eureka
322 PM PDT Tue Aug 4 2015

IF CONDITIONS BECOME UNREPRESENTATIVE,
CONTACT THE NATIONAL WEATHER SERVICE.

SPOT FORECAST FOR GASQUET COMPLEX...USFS
NATIONAL WEATHER SERVICE EUREKA CA
322 PM PDT TUE AUG 4 2015

FORECAST IS BASED ON REQUEST TIME OF 1431 PDT ON AUGUST 04.
IF CONDITIONS BECOME UNREPRESENTATIVE...CONTACT THE NATIONAL WEATHER
SERVICE.

DISCUSSION...TERRAIN INFLUENCES WILL LIKELY BE PROMINENT AS WELL...AS GENERAL WINDS WILL BE LIGHT FOR THE NEXT TWO DAYS. WEAK RIDGING WILL BRING DRY CONDITIONS AND A BRIEF WARM UP TODAY AND THURSDAY. THUNDERSTORM POTENTIAL WILL RETURN THURSDAY NIGHT THROUGH FRIDAY AS A LOW PRESSURE SYSTEM PROPAGATES OVER CENTRAL CALIFORNIA. UNSETTLED WEATHER WILL PERSIST THROUGH THE WEEKEND.

WEDNESDAY...

SKY/WEATHER.....MOSTLY CLOUDY EARLY THEN BECOMING SUNNY. LOW CLOUDS AND FOG WILL BE POSSIBLE AT LOWEST ELEVATIONS EARLY. HAZE AND SMOKE.
MAX TEMPERATURE.....72 TO 76 RIDGES...74 TO 80 VALLEYS.
MIN HUMIDITY.....40 TO 45 PERCENT.
EYE LEVEL WINDS.....DOWNSLOPE/DOWNVALLEY...BECOMING NORTHWEST 3 TO 7 MPH IN THE AFTERNOON.
SURROUNDING RIDGE...NORTH 5 MPH...BECOMING WEST 7 TO 10 MPH IN THE AFTERNOON.
WIND (20 FT).....DOWNSLOPE/DOWNVALLEY...BECOMING NORTHWEST 5 TO 9 MPH IN THE AFTERNOON.
LAL.....1.
CWR.....0 PERCENT.

WEDNESDAY NIGHT...

SKY/WEATHER.....MOSTLY CLEAR. LOW CLOUDS AND FOG WILL BE POSSIBLE AT LOWEST ELEVATIONS LATE. HAZE AND SMOKE.
MIN TEMPERATURE.....AROUND 57 TO 59.
MAX HUMIDITY.....50 TO 60 PERCENT RIDGES...80 TO 90 PERCENT VALLEYS.
EYE LEVEL WINDS.....NORTHWEST WINDS 3 TO 7 MPH...SHIFTING TO THE NORTHEAST 4 TO 7 MPH OVERNIGHT.
SURROUNDING RIDGE...WEST 6 TO 10 MPH...SHIFTING TO THE EAST AT 9 TO 11 MPH OVERNIGHT.
WIND (20 FT).....NORTHWEST WINDS 5 TO 9 MPH...SHIFTING TO THE NORTHEAST 5 TO 9 MPH AFTER MIDNIGHT.
LAL.....1.
CWR.....0 PERCENT.

FIRE BEHAVIOR FORECAST

| | |
|--------------------------------------|---|
| FORECAST NUMBER: #2 | TYPE OF FIRE: Wildland Fire |
| FIRE NAME: Gasquet Complex | OPERATIONAL PERIOD: August 05, 2015 |
| DATE ISSUED: August 04, 2015 | TIME ISSUED: 2000 |
| UNIT: Smith River NRA, Six Rivers NF | SIGNED: <i>Byron R. Kimball</i> |
| | Typed/printed:/s/ Byron R. Kimball FBAN |

INPUTS

WEATHER SUMMARY: Warming and drying trend sets up for the next two days, winds to remain light and terrain driven.

MAX TEMPERATURE.....72 TO 76 RIDGES...74 TO 80 VALLEYS.

MIN HUMIDITY.....40 TO 45 PERCENT.

EYE LEVEL WINDS....DOWNSLOPE/DOWNVALLEY...BECOMING NORTHWEST 3 TO 7 MPH IN THE AFTERNOON.

For more specific information, please see the Spot Weather forecast

OUTPUTS

FIRE BEHAVIOR

GENERAL:

Fires continue to move as the atmosphere dries out and warms up. Low intensity backing fire will continue with potential for short duration high energy runs as the fire aligns with wind and slope. Fire has now been present in timber fuels for three to four days. Be aware of instability around the bases of trees and snags. Weakened root structures are becoming a concern.

SPECIFIC:

Timber Understory: Fire behavior in the Understory models continues to be moderate. Head Fire Flame length numbers are just outside limits for direct attack; however ROS will keep the fire relatively close.

ROS: 5 to 10 ch/hr.

FL: 6 to 8 ft.

Timber Litter: Timber Litter fire behavior is in the Low range. Flame lengths are within the tolerances for hand crews to go direct if possible and rates of spread are low.

ROS: 3 to 6 ch/hr.

FL: 2 to 3 ft.

AIR OPERATIONS:

Air ops may be limited by lack of visibility due to smoke and marine layer. Opportunities may exist in the afternoon if the marine layer retreats.

SAFETY

Be aware of fire rolling to the bottom of slopes and running back up. Alignment of Fire Behavior Factors (Weather, Fuel, Terrain) can lead to dramatic increases in fire behavior.

| | | | | | | | |
|--|---|---|---------------------------|---|--------------------|--------|---------|
| DIVISION ASSIGNMENT LIST | | 1. Branch | | 2. Division/Group C - (Coon Fire) | | | |
| 3. Incident Name Gasquet Complex | | 4. Operational Period Day Date: 08/05 to 08/06 Time: 0600-0600 | | | | | |
| 5. Operations Personnel | | | | | | | |
| Operations Chief | Nickie Washington / Darrell Miller | | Division/Group Supervisor | Todd McDivitt / Brian Berry (T) | | | |
| Branch Director | | | Air Attack Supervisor No. | | | | |
| 6. Resources Assigned This Period | | | | | | | |
| Strike Team/Task Force/ Resource Designator | Leader | Number Persons | Trans Needed | Drop Off PT/Time | Pick Up PT/Time | | |
| E-5031 | Bergem | 3 | No | ICP / 0700 | ICP / 1900 | | |
| E-331 | Avery | 4 | No | ICP / 0700 | ICP / 1900 | | |
| SOFR | Don Berg | 1 | No | ICP / 0700 | ICP / 1900 | | |
| E-379 | | | | | | | |
| E-2180 | | | | | | | |
| E-169 | | | | | | | |
| WT 99 (Woods) | | | | | | | |
| All Agency WT (E-28) | | | | | | | |
| 7. Control Operations | | | | | | | |
| <p>Improve anchor point. Continue line progression. Scout for opportunities to reach containment objectives.</p> | | | | | | | |
| 8. Special Instructions | | | | | | | |
| Gather intel on fire perimeter and size. | | | | | | | |
| 9. Division/Group Communication Summary | | | | | | | |
| Function | Frequency | System | Channel | Function | Frequency | System | Channel |
| Command | See Comm Plan | | | Logistics | | | |
| Tactical Div/Group | | | | Air to Ground | | | |
| Prepared By (Resource Unit Leader) | | Approved By (Planning Sect. Ch.) | | Date | Time | | |
| Bill Kershaw | | Steve Abbott | | 08/04/15 | 2100 | | |
| ICS 204 | | | | | NFES 1328 | | |

| INCIDENT RADIO COMMUNICATIONS PLAN | | Incident Name Gasquet Complex | | Date/Time Prepared 08/04/2015 1800 hrs | Operational Period Date/Time 08/05/2015 08:06/2015 0600-0600 (24Hr) | | | | |
|------------------------------------|---------------|----------------------------------|---------------|--|---|----------|-----------------|-------------|----------------|
| Ch # | Function | Channel Name | Assignment | RX Freq | RX Tone/NAC | TX Freq | TX Tone/NAC | Mode Analog | Remarks |
| 1 | Command | CMD 1 | All Divisions | 167.1000 | Tone 15 (162.2) | 169.7500 | Tone 15 (162.2) | A | Ship Mtn |
| 2 | Command | CMD 2 | UNASSIGNED | 000.0000 | Tone 15 (162.2) | 000.0000 | Tone 15 (162.2) | A | |
| 3 | Command | CMD 3 | UNASSIGNED | 000.0000 | Tone 15 (162.2) | 000.0000 | Tone 15 (162.2) | A | |
| 4 | Backup Net | SRF ADM | All Divisions | 168.1250 | | 170.4750 | Tone 12 (127.3) | A | Gordon Mtn |
| 5 | Tactical | NIFC T-5 | DIV C | 166.7250 | Tone 15 (162.2) | 166.7250 | Tone 15 (162.2) | A | |
| 6 | Tactical | NIFC T-6 | DIV E | 166.7750 | Tone 15 (162.2) | 166.7750 | Tone 15 (162.2) | A | |
| 7 | Tactical | NIFC T-7 | DIV H | 168.2500 | Tone 15 (162.2) | 168.2500 | Tone 15 (162.2) | A | |
| 8 | Tactical | NIFC T-1 | DIV L | 168.0500 | Tone 15 (162.2) | 168.0500 | Tone 15 (162.2) | A | |
| 9 | Tactical | NIFC T-3 | DIV V | 168.6000 | Tone 15 (162.2) | 168.6000 | Tone 15 (162.2) | A | |
| 10 | Air to Ground | A/G-TAC | All Divisions | 165.3875 | | 165.3875 | | A | |
| 11 | Air to Ground | A/G-CMD | UNASSIGNED | | | | | A | |
| 12 | Tactical | R5 TAC 4 | DIV W | 166.5500 | Tone 15 (162.2) | 166.5500 | Tone 15 (162.2) | A | |
| 13 | Tactical | R5 TAC 5 | UNASSIGNED | 167.1125 | Tone 15 (162.2) | 167.1125 | Tone 15 (162.2) | A | |
| 14 | Tactical | R5 TAC 6 | UNASSIGNED | 168.2375 | Tone 15 (162.2) | 168.2375 | Tone 15 (162.2) | A | |
| 15 | EMS TAC | CALCORD | All Divisions | 156.0750 | | 156.0750 | Tone 6 (156.7) | A | Medical A/G |
| 16/20 | AIR GUARD | GUARD | All Divisions | 168.6250 | | 168.6250 | Tone 1 (110.9) | A | Emergency Only |

5. Prepared by (Communications Unit) *CP*

• Chris Perry COML(f) COMMUNICATIONS 951 833-7403

Incident Location: County _____ State _____ Latitude _____ Longitude _____ W

| | | | | | | | |
|--|---------------|---|-----------------|---|--------------------|--|---------|
| DIVISION ASSIGNMENT LIST | | 1. Branch | | 2. Division/Group E - (Bear Fire) | | | |
| 3. Incident Name Gasquet Complex | | 4. Operational Period Day Date: 08/05 to 08/06 Time: 0600-0600 | | | | | |
| 5. Operations Personnel | | | | | | | |
| Operations Chief | | Nickie Washington / Darrell Miller | | Division/Group Supervisor | | Kyle Jacobson / John Owings (T) | |
| Branch Director | | Air Attack Supervisor No. | | | | | |
| 6. Resources Assigned This Period | | | | | | | |
| Strike Team/Task Force/ Resource Designator | Leader | Number Persons | Trans Needed | Drop Off PT/Time | Pick Up PT/Time | | |
| E-379 | Angell | 4 | No | ICP / 0700 | ICP /1900 | | |
| E-14 | Woods | 4 | No | ICP / 0700 | ICP /1900 | | |
| E-2180 | Smyser | 3 | No | ICP / 0700 | ICP /1900 | | |
| WT 99 Wood's | Wendt | 2 | No | ICP / 0700 | ICP / 1900 | | |
| *** UNSTAFFED *** | | | | | | | |
| 7. Control Operations | | | | | | | |
| <p>Improve anchor point. Continue line progression. Scout for opportunities to reach containment objectives.</p> | | | | | | | |
| 8. Special Instructions | | | | | | | |
| Gather intel on fire perimeter and size. | | | | | | | |
| 9. Division/Group Communication Summary | | | | | | | |
| Function | Frequency | System | Channel | Function | Frequency | System | Channel |
| Command | See Comm Plan | | | Logistics | | | |
| Tactical Div/Group | | | | Air to Ground | | | |
| Prepared By (Resource Unit Leader) | | Approved By (Planning Sect. Ch.) | | Date | | Time | |
| Bill Kershaw | | Steve Abbott | | 08/04/15 | | 2100 | |

| INCIDENT RADIO COMMUNICATIONS PLAN | | Incident Name Gasquet Complex | | Date/Time Prepared 08/04/2015 1800 hrs | | Operational Period Date/Time 08/05/2015 08/06/2015 0600-0600 (24Hr) | | | |
|------------------------------------|---------------|---|---------------|--|-----------------|---|-----------------|-------------|----------------|
| Ch # | Function | Channel Name | Assignment | RX Freq | RX Tone/NAC | TX Freq | Tx Tone/NAC | Mode Analog | Remarks |
| 1 | Command | CMD 1 | All Divisions | 167.1000 | Tone 15 (162.2) | 169.7500 | Tone 15 (162.2) | A | Ship Mtn |
| 2 | Command | CMD 2 | UNASSIGNED | 000.0000 | Tone 15 (162.2) | 000.0000 | Tone 15 (162.2) | A | |
| 3 | Command | CMD 3 | UNASSIGNED | 000.0000 | Tone 15 (162.2) | 000.0000 | Tone 15 (162.2) | A | |
| 4 | Backup Net | SRF ADM | All Divisions | 168.1250 | | 170.4750 | Tone 12 (127.3) | A | Gordon Mtn |
| 5 | Tactical | NIFC T-5 | DIV C | 166.7250 | Tone 15 (162.2) | 166.7250 | Tone 15 (162.2) | A | |
| 6 | Tactical | NIFC T-6 | DIV E | 166.7750 | Tone 15 (162.2) | 166.7750 | Tone 15 (162.2) | A | |
| 7 | Tactical | NIFC T-7 | DIV H | 168.2500 | Tone 15 (162.2) | 168.2500 | Tone 15 (162.2) | A | |
| 8 | Tactical | NIFC T-1 | DIV L | 168.0500 | Tone 15 (162.2) | 168.0500 | Tone 15 (162.2) | A | |
| 9 | Tactical | NIFC T-3 | DIV V | 168.6000 | Tone 15 (162.2) | 168.6000 | Tone 15 (162.2) | A | |
| 10 | Air to Ground | A/G-TAC | All Divisions | 165.3875 | | 165.3875 | | A | |
| 11 | Air to Ground | A/G-CMD | UNASSIGNED | | | | | A | |
| 12 | Tactical | R5 TAC 4 | DIV W | 166.5500 | Tone 15 (162.2) | 166.5500 | Tone 15 (162.2) | A | |
| 13 | Tactical | R5 TAC 5 | UNASSIGNED | 167.1125 | Tone 15 (162.2) | 167.1125 | Tone 15 (162.2) | A | |
| 14 | Tactical | R5 TAC 6 | UNASSIGNED | 168.2375 | Tone 15 (162.2) | 168.2375 | Tone 15 (162.2) | A | |
| 15 | EMS TAC | CALCORD | All Divisions | 156.0750 | | 156.0750 | Tone 6 (156.7) | A | Medical A/G |
| 16/20 | AIR GUARD | GUARD | All Divisions | 168.6250 | | 168.6250 | Tone 1 (110.9) | A | Emergency Only |

5. Prepared by (Communications Unit) Incident Location
 • Chris Perry COML(f) COMMUNICATIONS 951 833-7403 County State Latitude Longitude W

| INCIDENT RADIO COMMUNICATIONS PLAN | | Incident Name Gasquet Complex | | Date/Time Prepared 08/04/2015 1800 hrs | | Operational Period Date/Time 08/05/2015 08/06/2015 0600-0600 (24Hr) | | | |
|------------------------------------|---------------|----------------------------------|---------------|--|-----------------|---|-----------------|-------------|----------------|
| Ch # | Function | Channel Name | Assignment | RX Freq | RX Tone/NAC | TX Freq | Tx Tone/NAC | Mode Analog | Remarks |
| 1 | Command | CMD 1 | All Divisions | 167.1000 | Tone 15 (162.2) | 169.7500 | Tone 15 (162.2) | A | Ship Mtn |
| 2 | Command | CMD 2 | UNASSIGNED | 000.0000 | Tone 15 (162.2) | 000.0000 | Tone 15 (162.2) | A | |
| 3 | Command | CMD 3 | UNASSIGNED | 000.0000 | Tone 15 (162.2) | 000.0000 | Tone 15 (162.2) | A | |
| 4 | Backup Net | SRF ADM | All Divisions | 168.1250 | | 170.4750 | Tone 12 (127.3) | A | Gordon Mtn |
| 5 | Tactical | NIFC T-5 | DIV C | 166.7250 | Tone 15 (162.2) | 166.7250 | Tone 15 (162.2) | A | |
| 6 | Tactical | NIFC T-6 | DIV E | 166.7750 | Tone 15 (162.2) | 166.7750 | Tone 15 (162.2) | A | |
| 7 | Tactical | NIFC T-7 | DIV H | 168.2500 | Tone 15 (162.2) | 168.2500 | Tone 15 (162.2) | A | |
| 8 | Tactical | NIFC T-1 | DIV L | 168.0500 | Tone 15 (162.2) | 168.0500 | Tone 15 (162.2) | A | |
| 9 | Tactical | NIFC T-3 | DIV V | 168.6000 | Tone 15 (162.2) | 168.6000 | Tone 15 (162.2) | A | |
| 10 | Air to Ground | A/G-TAC | All Divisions | 165.3875 | | 165.3875 | | A | |
| 11 | Air to Ground | A/G-CMD | UNASSIGNED | | | | | A | |
| 12 | Tactical | R5 TAC 4 | DIV W | 166.5500 | Tone 15 (162.2) | 166.5500 | Tone 15 (162.2) | A | |
| 13 | Tactical | R5 TAC 5 | UNASSIGNED | 167.1125 | Tone 15 (162.2) | 167.1125 | Tone 15 (162.2) | A | |
| 14 | Tactical | R5 TAC 6 | UNASSIGNED | 168.2375 | Tone 15 (162.2) | 168.2375 | Tone 15 (162.2) | A | |
| 15 | EMS TAC | CALCORD | All Divisions | 156.0750 | | 156.0750 | Tone 6 (156.7) | A | Medical A/G |
| 16/20 | AIR GUARD | GUARD | All Divisions | 168.6250 | | 168.6250 | Tone 1 (110.9) | A | Emergency Only |

5. Prepared by (Communications Unit)

- Chris Perry COML(I) COMMUNICATIONS 951 833-7403

Incident Location
County State Latitude Longitude
N Longitude W

| | | | | | | | |
|---|-------------------------|---|-----------------|--|-----------------------|-------------|---------|
| DIVISION ASSIGNMENT LIST | | 1. Branch | | 2. Division/Group L -- (Peak Fire) | | | |
| 3. Incident Name Gasquet Complex | | 4. Operational Period Day Date: 08/05 to 08/06 | | Time: 0600-0600 | | | |
| 5. Operations Personnel | | | | | | | |
| Operations Chief Nickie Washington / Darrell Miller | | Division/Group Supervisor | | Candice Kutrosky / Paul Mandolini (T) | | | |
| Branch Director | | Air Attack Supervisor No. | | | | | |
| 6. Resources Assigned This Period | | | | | | | |
| Strike Team/Task Force/ Resource Designator | Leader | Number Persons | Trans Needed | Drop Off PT/Time | Pick Up PT/Time | | |
| E-61 | Matt Morrell | 3 | No | ICP / 0700 | ICP / 1900 | | |
| E-62 | Mani Morrell | 3 | No | ICP / 0700 | ICP / 1900 | | |
| E-169 | Pickering | 3 | No | ICP / 0700 | ICP / 1900 | | |
| WT 15 | McAdams | 2 | No | ICP / 0700 | ICP / 1900 | | |
| WT 75 | Salena | 2 | No | ICP / 0700 | ICP / 1900 | | |
| FALM North Zone #1 | Alan Stewart | 2 | No | ICP / 0700 | ICP / 1900 | | |
| FALM North Zone #3 | Rick Mee | 2 | No | ICP / 0700 | ICP / 1900 | | |
| FALM North Zone #4 | Bill Meadows | 2 | No | ICP / 0700 | ICP / 1900 | | |
| FALM #2 (0-95) | | 2 | | | | | |
| HEQB/TPLR | Waters | 1 | N | | | | |
| 7. Control Operations | | | | | | | |
| Anchor fireline from G-O Road/Boundary Trail. Secure all fire south of Boundary Trail. | | | | | | | |
| 8. Special Instructions | | | | | | | |
| Gather intel on fire perimeter and size. | | | | | | | |
| 9. Division/Group Communication Summary | | | | | | | |
| Function | Frequency | System | Channel | Function | Frequency | System | Channel |
| Command | See Comm Plan | | | Logistics | | | |
| Tactical Div/Group | | | | Air to Ground | | | |
| Prepared By (Resource Unit Leader) | | Approved By (Planning Sect. Ch.) | | Date | | Time | |
| Bill Kershaw | | Steve Abbott | | 08/04/15 | | 2100 | |
| ICS 204 | | | | | | NFES 1328 | |

| INCIDENT RADIO COMMUNICATIONS PLAN | | Incident Name Gasquet Complex | | Date/Time Prepared 08/04/2015 1800 hrs | Operational Period Date/Time 08/05/2015 08:06/2015 0600-0600 (24Hr) | | | | |
|------------------------------------|---------------|----------------------------------|---------------|--|---|----------|------------------------|----------------|----------------|
| Ch # | Function | Channel Name | Assignment | RX Freq | RX Tone/NAC (162.2) | TX Freq | Tx Tone/NAC (162.2) | Mode Analog | Remarks |
| 1 | Command | CMD 1 | All Divisions | 167.1000 | Tone 15 (162.2) | 169.7500 | Tone 15 (162.2) | A | Ship Mtn |
| 2 | Command | CMD 2 | UNASSIGNED | 000.0000 | Tone 15 (162.2) | 000.0000 | Tone 15 (162.2) | A | |
| 3 | Command | CMD 3 | UNASSIGNED | 000.0000 | Tone 15 (162.2) | 000.0000 | Tone 15 (162.2) | A | |
| 4 | Backup Net | SRF ADM | All Divisions | 168.1250 | | 170.4750 | Tone 12 (127.3) | A | Gordon Mtn |
| 5 | Tactical | NIFC T-5 | DIV C | 166.7250 | Tone 15 (162.2) | 166.7250 | Tone 15 (162.2) | A | |
| 6 | Tactical | NIFC T-6 | DIV E | 166.7750 | Tone 15 (162.2) | 166.7750 | Tone 15 (162.2) | A | |
| 7 | Tactical | NIFC T-7 | DIV H | 168.2500 | Tone 15 (162.2) | 168.2500 | Tone 15 (162.2) | A | |
| 8 | Tactical | NIFC T-1 | DIV L | 168.0500 | Tone 15 (162.2) | 168.0500 | Tone 15 (162.2) | A | |
| 9 | Tactical | NIFC T-3 | DIV V | 168.6000 | Tone 15 (162.2) | 168.6000 | Tone 15 (162.2) | A | |
| 10 | Air to Ground | A/G-TAC | All Divisions | 165.3875 | | 165.3875 | | A | |
| 11 | Air to Ground | A/G-CMD | UNASSIGNED | | | | | A | |
| 12 | Tactical | R5 TAC 4 | DIV W | 166.5500 | Tone 15 (162.2) | 166.5500 | Tone 15 (162.2) | A | |
| 13 | Tactical | R5 TAC 5 | UNASSIGNED | 167.1125 | Tone 15 (162.2) | 167.1125 | Tone 15 (162.2) | A | |
| 14 | Tactical | R5 TAC 6 | UNASSIGNED | 168.2375 | Tone 15 (162.2) | 168.2375 | Tone 15 (162.2) | A | |
| 15 | EMS TAC | CALCORD | All Divisions | 156.0750 | | 156.0750 | Tone 6 (156.7) | A | Medical A/G |
| 16/20 | AIR GUARD | GUARD | All Divisions | 168.6250 | | 168.6250 | Tone 1 (110.9) | A | Emergency Only |

5. Prepared by (Communications Unit)

• Chris Perry COML(f) COMMUNICATIONS 951 833-7403

Incident Location
County State Latitude Longitude W

| INCIDENT RADIO COMMUNICATIONS PLAN | | Incident Name Gasquet Complex | | Date/Time Prepared 08/04/2015 1800 hrs | Operational Period Date/Time 08/05/2015 08/06/2015 0600-0600 (24Hr) | | | | |
|------------------------------------|---------------|----------------------------------|---------------|--|---|----------|-----------------|-------------|----------------|
| Ch # | Function | Channel Name | Assignment | RX Freq | RX Tone/NAC | TX Freq | TX Tone/NAC | Mode Analog | Remarks |
| 1 | Command | CMD 1 | All Divisions | 167.1000 | Tone 15 (162.2) | 169.7500 | Tone 15 (162.2) | A | Ship Mfn |
| 2 | Command | CMD 2 | UNASSIGNED | 000.0000 | Tone 15 (162.2) | 000.0000 | Tone 15 (162.2) | A | |
| 3 | Command | CMD 3 | UNASSIGNED | 000.0000 | Tone 15 (162.2) | 000.0000 | Tone 15 (162.2) | A | |
| 4 | Backup Net | SRF ADM | All Divisions | 168.1250 | | 170.4750 | Tone 12 (127.3) | A | Gordon Mfn |
| 5 | Tactical | NIFC T-5 | DIV C | 166.7250 | Tone 15 (162.2) | 166.7250 | Tone 15 (162.2) | A | |
| 6 | Tactical | NIFC T-6 | DIV E | 166.7750 | Tone 15 (162.2) | 166.7750 | Tone 15 (162.2) | A | |
| 7 | Tactical | NIFC T-7 | DIV H | 168.2500 | Tone 15 (162.2) | 168.2500 | Tone 15 (162.2) | A | |
| 8 | Tactical | NIFC T-1 | DIV L | 168.0500 | Tone 15 (162.2) | 168.0500 | Tone 15 (162.2) | A | |
| 9 | Tactical | NIFC T-3 | DIV V | 168.6000 | Tone 15 (162.2) | 168.6000 | Tone 15 (162.2) | A | |
| 10 | Air to Ground | A/G-TAC | All Divisions | 165.3875 | | 165.3875 | | A | |
| 11 | Air to Ground | A/G-CMD | UNASSIGNED | | | | | A | |
| 12 | Tactical | R5 TAC 4 | DIV W | 166.5500 | Tone 15 (162.2) | 166.5500 | Tone 15 (162.2) | A | |
| 13 | Tactical | R5 TAC 5 | UNASSIGNED | 167.1125 | Tone 15 (162.2) | 167.1125 | Tone 15 (162.2) | A | |
| 14 | Tactical | R5 TAC 6 | UNASSIGNED | 168.2375 | Tone 15 (162.2) | 168.2375 | Tone 15 (162.2) | A | |
| 15 | EMS TAC | CALCORD | All Divisions | 156.0750 | | 156.0750 | Tone 6 (156.7) | A | Medical A/G |
| 16/20 | AIR GUARD | GUARD | All Divisions | 168.6250 | | 168.6250 | Tone 1 (110.9) | A | Emergency Only |

5. Prepared by (Communications Unit)

• Chris Perry COML(f) COMMUNICATIONS 951 833-7403

Incident Location
County State Latitude Longitude

W

| DIVISION ASSIGNMENT LIST | | 1. Branch | | 2. Division/Group W - (Feeder Fire) | | | |
|--|---------------|--|-----------------|---|--------------------|-------------|---------|
| 3. Incident Name Gasquet Complex | | 4. Operational Period Day Date: 08/05 to 08/06 Time: 0600-0600 | | | | | |
| 5. Operations Personnel | | | | | | | |
| Operations Chief Nickie Washington / Darrell Miller | | Division/Group Supervisor <i>Glen</i> Jeff Webb / Albert Ward (T) | | | | | |
| Branch Director | | Air Attack Supervisor No. | | | | | |
| 6. Resources Assigned This Period | | | | | | | |
| Strike Team/Task Force/ Resource Designator | Leader | Number Persons | Trans Needed | Drop Off PT/Time | Pick Up PT/Time | | |
| E-464 | Locke | 4 | No | ICP / 0700 | ICP / 1900 | | |
| E-47 Tonto | | 3 | No | ICP / 0700 | ICP / 1900 | | |
| TFLD | Hyatt | 1 | No | ICP / 0700 | ICP / 1900 | | |
| E-14 E-214 | | | | | | | |
| E-61 | | | | | | | |
| E-62 | | | | | | | |
| WT-15 | | | | | | | |
| WT-75 | | | | | | | |
| 7. Control Operations | | | | | | | |
| <p>Improve anchor point. Continue line production. Evaluate need for burnout operation to secure anchor point.</p> <p>14N39A Road</p> | | | | | | | |
| 8. Special Instructions | | | | | | | |
| Gather intel on fire perimeter and size. | | | | | | | |
| 9. Division/Group Communication Summary | | | | | | | |
| Function | Frequency | System | Channel | Function | Frequency | System | Channel |
| Command | See Comm Plan | | | Logistics | | | |
| Tactical Div/Group | | | | Air to Ground | | | |
| Prepared By (Resource Unit Leader) | | Approved By (Planning Sect. Ch.) | | Date | | Time | |
| Bill Kershaw | | Steve Abbott | | 08/04/15 | | 2100 | |
| ICS 204 | | | | | | NFES 1328 | |

| INCIDENT RADIO COMMUNICATIONS PLAN | | Incident Name Gasquet Complex | | | Date/Time Prepared 08/04/2015 1800 hrs | Operational Period Date/Time 08/05/2015 08:06/2015 0600-0600 (24Hr) | | | |
|------------------------------------|---------------|----------------------------------|---------------|----------|--|---|------------------------|----------------|----------------|
| Ch # | Function | Channel Name | Assignment | RX Freq | RX Tone/NAC (162.2) | TX Freq | Tx Tone/NAC (162.2) | Mode Analog | Remarks |
| 1 | Command | CMD 1 | All Divisions | 167.1000 | Tone 15 (162.2) | 169.7500 | Tone 15 (162.2) | A | Ship Mtn |
| 2 | Command | CMD 2 | UNASSIGNED | 000.0000 | Tone 15 (162.2) | 000.0000 | Tone 15 (162.2) | A | |
| 3 | Command | CMD 3 | UNASSIGNED | 000.0000 | Tone 15 (162.2) | 000.0000 | Tone 15 (162.2) | A | |
| 4 | Backup Net | SRF ADM | All Divisions | 168.1250 | | 170.4750 | Tone 12 (127.3) | A | Gordon Mtn |
| 5 | Tactical | NIFC T-5 | DIV C | 166.7250 | Tone 15 (162.2) | 166.7250 | Tone 15 (162.2) | A | |
| 6 | Tactical | NIFC T-6 | DIV E | 166.7750 | Tone 15 (162.2) | 166.7750 | Tone 15 (162.2) | A | |
| 7 | Tactical | NIFC T-7 | DIV H | 168.2500 | Tone 15 (162.2) | 168.2500 | Tone 15 (162.2) | A | |
| 8 | Tactical | NIFC T-1 | DIV L | 168.0500 | Tone 15 (162.2) | 168.0500 | Tone 15 (162.2) | A | |
| 9 | Tactical | NIFC T-3 | DIV V | 168.6000 | Tone 15 (162.2) | 168.6000 | Tone 15 (162.2) | A | |
| 10 | Air to Ground | A/G-TAC | All Divisions | 165.3875 | | 165.3875 | | A | |
| 11 | Air to Ground | A/G-CMD | UNASSIGNED | | | | | A | |
| 12 | Tactical | R5 TAC 4 | DIV W | 166.5500 | Tone 15 (162.2) | 166.5500 | Tone 15 (162.2) | A | |
| 13 | Tactical | R5 TAC 5 | UNASSIGNED | 167.1125 | Tone 15 (162.2) | 167.1125 | Tone 15 (162.2) | A | |
| 14 | Tactical | R5 TAC 6 | UNASSIGNED | 168.2375 | Tone 15 (162.2) | 168.2375 | Tone 15 (162.2) | A | |
| 15 | EMS TAC | CALCORD | All Divisions | 156.0750 | | 156.0750 | Tone 6 (156.7) | A | Medical A/G |
| 16/20 | AIR GUARD | GUARD | All Divisions | 168.6250 | | 168.6250 | Tone 1 (110.9) | A | Emergency Only |

5. Prepared by (Communications Unit)
Chris Peiry COML(f) COMMUNICATIONS 951 833-7403

Incident Location County State Latitude Longitude W

| | | | | | | | | |
|--|---|---|--------------------------|--|---------|----|-------------|----|
| MEDICAL PLAN | 1. INCIDENT NAME Gasquet Complex | 2. DATE PREPARED 8/5/15 | 3. TIME PREPARED 2130 | 4. OPERATIONAL PERIOD 8/5-6/2014 0600-0600 | | | | |
| 5. INCIDENT MEDICAL AID STATIONS | | | | | | | | |
| MEDICAL AID STATIONS | | LOCATION | | PARAMEDIC | | | | |
| Medical Unit | | Gasquet ICP | | YES NO | | | | |
| | | | | X | | | | |
| TRANSPORTATION | | | | | | | | |
| A. Air Ambulances | | | | | | | | |
| NAME | ADDRESS | PHONE | PARAMEDIC | | | | | |
| | | | YES | NO | | | | |
| Mercy Air Ambulance 105 | Medford, Oregon | 1-800-903-9000 | X | | | | | |
| CHP H-14 (Day/Night, Hoist) | Redding Airport | (530) 842-3515 | X | | | | | |
| Cal Fire Kneeland Helitack H-102 | Kneeland Station | (707) 444-2863 | | X | | | | |
| Coast Guard | Humboldt Bay Air Station | (707) 839-6100 | | X | | | | |
| Reach 5 Air Medical | Redding CA | (530) 351-5148 | X | | | | | |
| PHI Air Medical | Redding CA | 1-800-597-9571 | X | | | | | |
| B. Ground Ambulances | | | | | | | | |
| Gasquet Fire Protection District V.F.D. | Fire House Rd Gasquet CA 95543 | Communications | | X | | | | |
| Del Norte Ambulance, Station 2 | 2600 Morehead Rd Crescent City CA | Communications | X | | | | | |
| 7. HOSPITALS | | | | | | | | |
| NAME | ADDRESS | TRAVEL TIME | | PHONE | HELIPAD | | BURN CENTER | |
| | | AIR | GRND | | YES | NO | YES | NO |
| Sutter Coast Hospital | 800 E Washington Crescent City CA. N. 41 46.454 x W 124 11.537 | | 25min | ER: 707-464-8888 Gen: 707-464-8511 | | X | | X |
| Mercy Med. Center Level 3 Trauma | 914 Pine St. Mt. Shasta, CA. N. 40 34.14 x W. 122 23.97 | 45m | 2.5hr | (530)926-9360 | X | | | X |
| Rogue Valley Med Center Level 2 Trauma | 2825 Barnett Rd. Medford, OR. N. 42 19.092 W. 122 49.833 | 30m | 2.5hr | (541)789-7100 | X | | | X |
| UC Davis Med Center Level 1 Trauma Burn Center | 2315 Stockton Blvd. Sacramento, CA N. 38 33.3 x W. 121 27.3 | 2hr | 7.0hr | (916) 734-3636 Burn Center (916) 734-3790 ER | X | | X | |
| 8. MEDICAL EMERGENCY PROCEDURES | | | | | | | | |
| <p>In the event of a medical emergency provide the following information to your Division or Happy Camp Communications on Command.</p> <ol style="list-style-type: none"> 1. Declare the nature of the emergency. <ol style="list-style-type: none"> a. Medical injury/illness? b. Is injury/illness life threatening? 2. If life threatening, then request that the designated frequency be cleared for emergency traffic. 3. Identify the on-scene Point of Contact (POC) by resource and last name (i.e POC is TFLD Smith). 4. Identify nature of incident, number injured, patient assessment(s) and location (geographic and GPS coordinates). 5. Identify on-scene medical personnel by position and name (i.e EMT Jones). 6. Identify preferred method of patient transport. 7. Request any additional resources and/or equipment needed 8. Document all information received and transmitted on the radio or phone. 9. Identify any changes in the on-scene Point of Contact or medical personnel as they occur. | | | | <p>INJURY REPORTING PROCEDURES</p> <p>NATURE OF INJURY _____ # of Patients _____</p> <p>TRANSPORTATION NEEDED Air _____ Ground _____</p> <p>REM Needed Y ___ N ___ Estimated Air Temp _____</p> <p>LAT _____ LONG _____ Elevation _____</p> <p>Specific Hazards In Area _____</p> <p>PATIENT UNIT ID _____</p> <p>REMINDER: DO NOT GIVE PT NAME OVER RADIO</p> <p>IS MEDICAL PERSONNEL WITH PATIENT: YES ___ NO ___</p> <p>AGE ___ SEX: MALE ___ FEMALE ___</p> <p>ALL EMERGENCIES---Secure the area and identify witnesses for later investigation. Keep an accurate log of events. Medical Unit, Zone 1 (949) 812-8736, (714)334-4966 Office (530)493-1506 Medical Unit, Zone 2 (916) 591-8802 (916) 215-2732</p> | | | | |
| 9. PREPARED BY (MEDICAL UNIT LEADER) Gena Fowlkes MEDL(t) | | 10. REVIEWED BY (SAFETY OFFICER) John Bates SOF2 | | | | | | |
| ICS 206 8-78 | | | | | | | | |



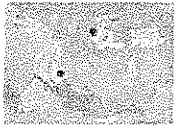
Health & Safety Message

Incident: Gasquet Complex
CA-SRF-001488

Date/Op Period: 8/5-6/2015
0600-0600

Hazards & Risks

Wildlife: The possibility of seeing wild animals on your divisions are high. If you see bears, please don't feed them. If you are confronted by any other animals, remember one thing, "we are in their home", let's respect that!



Traveling to and from your assignments: Please remember, we are guests in this area and owe it to the community to drive with caution through town and on surface streets. Always give right away to residents, watch for pedestrian traffic and drive the speed limit. When traveling on surface streets, watch for pets that might be out on the road ways. When on your divisions, drive with caution, head lights on, and ***Drive the posted speed limits!***

Medical emergencies: What medical capabilities do your engines have? While in your divisional breaks out, identify who has FEMP's or FEMT's on board. Read the medical plan as well as the Incident With-In an Incident procedure so you are ready for any emergencies.

Hydration and Heat Related Illnesses: While on your division be sure to hydrate all day. If you're thirsty now you've waited too long. Pack plenty of water for your operational period and utilize electrolytes in your water, 1/4 electrolytes and 3/4 bottle water. Monitor yourself and your crews for signs of dehydration.

Personal Hygiene: As the incident base continues to grow, more and more facility needs are being set up in camp. Paying close attention to your personal hygiene will prevent sickness while on your assignment.

Fire Behavior: With the extreme fire behaviors in this part of the country we've been experiencing, we need to think, "LCES". Identify the person that will be your look out, know your safety zone and ensure they know how to utilize the radio in a proficient manor. Constantly monitor the weather channel for changing condition and make them known to all on your division.

Prepared By: John Bates SOF2

Approved: James Aragon SOF2

L. Lookouts **C.** Communications **E.** Escape Routes **S.** Safety Zones

BE MINDFUL

INCIDENT RISK ANALYSIS
Gasquet Complex
(ICS 215A) August 5th, 2015 0600-0600

| DIV | HAZARDOUS ACTIONS / CONDITIONS | MITIGATIONS / WARNINGS / REMEDIES | |
|---|---|---|--|
| ALL | Communications | <ul style="list-style-type: none"> • Ensure you have received the most current communications plan, and your radios have been cloned to it before heading out to your work area. • TEST your radio before you leave camp to ensure you have comms, and then TEST again when you arrive at your work area. • Use human repeaters in areas with sketchy comms. • Refer to the 5 communication responsibilities listed on page ix in the 2014 IRPG | |
| ALL | Driving Hazards | <ul style="list-style-type: none"> • Washboard conditions are common on most of the native surface roads. . Maintain adequate following distances. Reduce speed in Developed Areas. Be watchful of local traffic. • Drive with your headlights on. Look before backing and use backbrakes. • Maintain driving situational awareness. • SEAT BELTS ON...LIGHTS ON...BEFORE wheels turn! • Reduce driving speeds to allow for reaction time lag. • Drive Defensively! Expect the unexpected around every curve. • Don't drive when fatigued. Adhere to agency driving regulations and guidelines. | |
| ALL | Hydration & Heat Illness | <ul style="list-style-type: none"> • Pre-hydrate, Re-hydrate! <u>Dehydration is preventable</u>.....Drink a <u>minimum</u> of 250ml/hour; (¼ of canteen) • Drink water & Electrolyte drinks before, during, and after shifts. (2 waters to 1 sports drink). • Do NOT mix with water or dilute electrolyte drink. It must be consumed as is for the body to absorb properly. • Low volumes of dark, concentrated urine or painful urination indicate a serious need for rehydration, & medical attention. • Ensure your crews take an adequate water/electrolyte supply out to assignment and order more as needed. Take frequent snack breaks to keep blood sugar levels up. • Pace work to avoid heat injuries • Heat exhaustion is characterized by: Weakness, Extreme Fatigue, Nausea, Dizziness & Headaches, clammy skin, persistent muscle cramps, decreased urine output. <ul style="list-style-type: none"> ○ Cool patient as quickly as possible! ○ Move patient to a cooler location and provide cold water and sports drink. ○ Actively reduce core temperature through evaporation by fanning patient. ○ Cover head and neck with wet cloth, increase air movement. ○ Heat exhaustion is characterized by: Weakness, Extreme Fatigue, Nausea, Dizziness Headaches, clammy skin, persistent muscle cramps, decreased urine output. ○ Remove Patient from fireline and seek medical attention. • <u>Mental confusion may develop</u>. This is a serious trigger point for the potential onset of Heat Stroke. • Refer to Medical Plan for additional EMS care and Evacuation | |
| ALL | Biting, Stinging Insects (Rattle Snakes, Scorpions, Bees, Mosquitoes, Ticks, etc) | <ul style="list-style-type: none"> • If allergic to bee stings, let your TFLD & EMT's know. • Leave the snakes alone! • Shake out boots and or sleeping bags prior to use • Check yourself daily for tick bites. | |
| ALL | Aircraft Operations | <ul style="list-style-type: none"> • Ensure resources are clear of "Target Area" during bucket or retardant use. • Use air-to-ground frequency to communicate with aircraft. • Use clear, concise statements when directing aircraft. Use clock directions from pilot's perspective and mirror flashes. • Consider risk vs gain • Keep non-essential personnel away from dip sites (natural and/or man made) | |
| ALL | Fire Behavior | <ul style="list-style-type: none"> • High rates of spread (ROS) when aligned with wind & topography. • Ensure a solid anchor point and flank. • Use experienced LOOKOUTS under these conditions. • Monitor weather conditions. Be aware of visual indicators (clouds, WX obs., cold front passage) • Maintain adequate escape routes and safety zones. Set trigger points when appropriate. Communicate any changes. • Spotting Potential still exists....."Eyes to the green" • Be aware of Low RH's affecting all fuels. POI back to 80-100% with high temps. | |
| INCIDENT NAME Gasquet Complex ICS 215a | | Date Prepared: August 4, 2015 Time Prepared: 1700 | OPERATIONAL PERIOD 8/5/2015, 0600-0600 Prepared by John Bates |



Incident within an Incident Action Plan

When the scope or complexity of the emergency exceeds division resource needs

This plan is designed to identify the initial actions that should be taken by the first arriving personnel on a serious accident. This person may be a single resource, engine boss, or a crew boss. Accidents or incidents within an incident happen rapidly and require sound, calm initial decisions to handle the problem, while still focusing on the main incident. The following checklist provides some key thoughts and actions.

The first arriving person to any accident should notify their Division Supervisor, or the Div Sup assigned to that location.

Advise of the critical information needed:

- Accident scene safety assessment and advise incoming personnel
- Number of injuries and their severity
- Special equipment needs (extrication, low/high angle rescue, fire protection or suppression)
- Assist the injured as necessary without endangering yourself or other personnel
- Do not move trauma victims unless their safety is in jeopardy
- Utilize PINK pages of the Incident Response Pocket Guide (IRPG) for patient assessment/medical procedures

Remain aware of surroundings and delegate personnel to monitor the main fire

The **Division Supervisor** will assume command of the accident/incident scene upon arrival. The following list outlines the general duties and tasks that should be completed on most accidents/incidents.

1. Delegate division oversight to another Division Supervisor or other qualified person.
2. Request a clear frequency from Comm and consider switching to designated Emergency Tactical (Incident Comm will notify the MEDL who will initiate the medical plan for injuries)
3. Order/delegate resources appropriate for the accident/incident (crew EMT's, Line EMT's or Line Medics, rescue equipment, patient transport needs, manpower)
4. Notify Operations Section Chief and Safety Officer on all accidents/incidents.
5. Begin to document the event accurately and completely. Use ICS form 201 if the event is large or complex.
6. Protect the scene for Investigators

Reference the full Incident Medical Emergency Plan for additional



Incident within an Incident Action Plan

Position Assignment Supportive Actions

Division Supervisor

- See items 1-6 on page one
- If unable to access accident/incident location, delegate command to a closer qualified resource

Medical Unit Leader

- Respond to Comm Unit as soon as possible
- Coordinate with Division Supervisor to ensure proper resources are rapidly ordered
- Assign a MEDL to the scene and other positions to support the response as needed
- Monitor condition updates of patient(s) and coordinate response with Operations

Communications Unit Leader

- Maintain clear radio traffic and monitor communications to support response
- Recommend appropriate security and investigative process
- Assess the need for critical Incident Stress Response

Safety Officer

- Provide for Safety personnel on scene as needed
- Recommend appropriate security and investigative process
- Assess the need for critical Incident Stress Response

Air Attack Supervisor

- Obtain coordinates of the emergency location
- Coordinate air-medical response
- Assist and support the designated Point of Contact with communications and coordination of the emergency response as necessary

IC, Command & General Staff

- Manage the emergency and direct specific responsibilities to individual positions to provide an appropriate response
- Notify the host unit and host dispatch center of the size-up information
- Constantly monitor and assess the appropriate response and adapt direction as needed
- Submit all documentation pertaining to the emergency to the Plans Chief

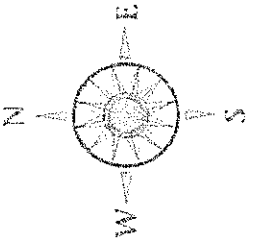
Reference the full Incident Medical Emergency Plan for additional

NO DOZERS, BULLDOZERS OR ENGINES

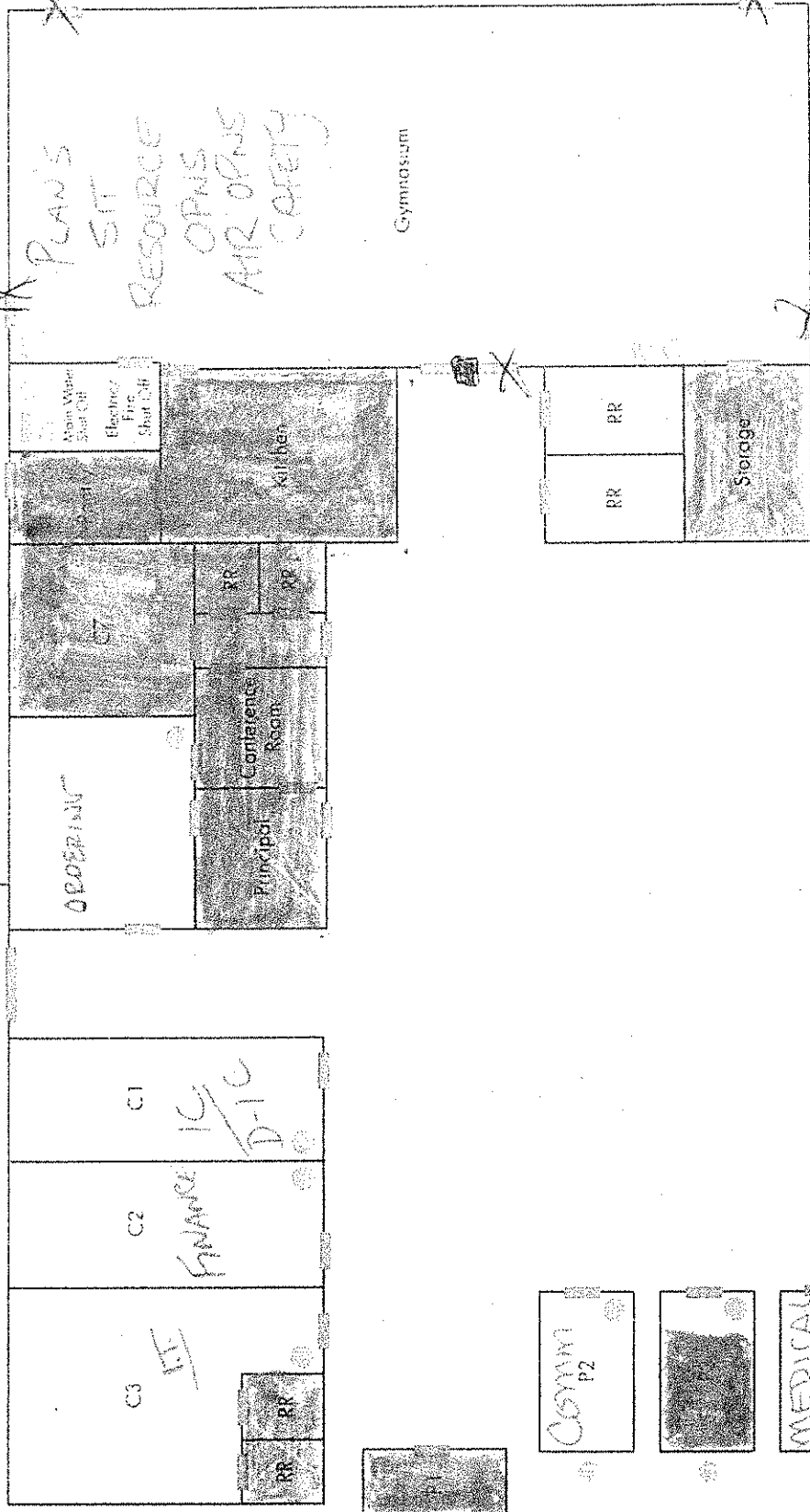
Mountain School
55 Azalea Road
Gaskel, CA 95543

ICP
ADMIN

- Fire Alarm Panel
- Water Shut Off
- Electrical Shut Off
- Classroom
- Exit/Door
- Fire Extinguisher



071410/Sik Maps/Cel Floor



Bus Barn

