

CORRECTED

GASQUET COMPLEX

INCIDENT ACTION PLAN

OPERATIONAL PERIOD

AUG 9 - AUG 10, 2015

0600-0600



"Adapt...Improvise...and Overcome"



CA-SRF-001488

P5JOPQ (0510)

NAD 83

dd° m.mm'

ORGANIZATION ASSIGNMENT LIST (ICS 203)

1. Incident Name:		2. Operational Period: 0600 - 0600	
GASQUET COMPLEX		Date/Time From: 08/09/2015 0600 SUN	Date/Time To: 08/10/2015 0600 MON
3. Incident Commander(s) and Command Staff:		7. Operations Section:	
IC/UC	DON GARWOOD	OPS SECTION CHIEF	NICKIE WASHINGTON DARRELL MILLER
DEPUTY	DAVE KELLY	PLANNING OPS	MATTHEW CONKLIN AARON THOMPSON (T)
SAFETY OFFICER	JAMES ARAGON; JOHN BATES FRED HERNANDEZ (T)		
INFORMATION OFFICER	JIM WILKINS; ROBERT POOLE ASCENSION BRIBIESCAS		
LIAISON OFFICER	LARRY LA VOGUE 909-855-5756	DIVISION/GROUP	A - COON FIRE MITCH FOWLKES DAN O'CONNOR (T)
HUMAN RESOURCES	KATHY KREYNS 909-731-1771	DIVISION/GROUP	C - COON FIRE TODD MCDIVITT BRIAN BERRY (T)
4. Agency/Organization Representative(s):		DIVISION/GROUP	E - BEAR FIRE DAVID MARTINEZ JOHN OWINGS (T)
Agency/Organization	Name	DIVISION/GROUP	H - WILLIAMS FIRE UNSTAFFED
USFS	DAVE PALMER	DIVISION/GROUP	L/N - PEAK FIRE CANDICE KUTROSKY PAUL MANDOLINI (T)
GASQUET VFD	NICK KARANPOULOS	DIVISION/GROUP	V - SUMMIT PETE VILLA DAVID WOODY (T)
CAL EMA	JOHN SALVATE	DIVISION/GROUP	W - FEEDER FIRE GLENN WEBB AL WARD (T)
CAL TRANS		DIVISION/GROUP	Z - FEEDER FIRE ADAM KOHLEY ROBERT ALLAN (T)
SRF-NFFE	ROBERTA CORAGLIOTTI 530-784-7542 JOHN MC RAE 707-845-8017		
5. Planning Section:		7b. Air Operations Branch:	
CHIEF	DAVE LATTIMORE	AIR OPS BRANCH DIRECTOR	TED VISSER
RESOURCES UNIT	KYLE HAUDUCOEUR, NANCY MASTERS JOE SCURI (T)	AIR SUPPORT SUPERVISOR	GALEN YOUNG
SITUATION UNIT	GORDON TAMPLIN(T)	AIR ATTACK SUPERVISOR	RON SERABIA CLIFF CLARIDGE
DOCUMENTATION	VANESSA HANSON	AIR TANKER COORDINATOR	
DEMOB UNIT	TIM KNORR JIM STITELER (T)	HELICOPTER COORDINATOR	
FIRE BEHAVIOR	BYRON KIMBALL		
TRAINING SPECIALIST	ANN HUTCHINSON	8. Finance/Administration Section:	
GIS SPECIALIST	R MURILLO; A. KIRSCH; A SALDIVAR(T)	CHIEF	DEBBIE YORK
COMPUTER SPECIALIST	CHARLES VERTREES	DEPUTY	
6. Logistics Section:		TIME UNIT	SHARON R MAKOSKY DEANNA THOMPSON (T)
CHIEF	ERIC SWEETMAN	PROCUREMENT UNIT	JAISSY SCOTT (T)
DEPUTY	STEVE KING (T)	COMPENSATION UNIT	
SUPPLY UNIT	EVAN TISS; DAVID WHITNEY	COST UNIT	THOMAS STEELE KRIS STERBENS (T)
FACILITIES UNIT	ART CURLEY; DOUG WINN(T)		
GROUND SUPT UNIT	CHRIS HALEY; RON NOORDMAN		
COMM UNIT	DAVE LARKIN; CHRIS PERRY(T)		
MEDICAL UNIT	GENA FOWLKES MATTHEW MENARD (T)		
SECURITY UNIT	HEATHER NAIGUS		
FOOD UNIT	RICHARD WAITE		
9. Prepared By: Name: JOE SCURI		Position/Title: RESL (T)	Signature:
ICS 203	IAP Page	Date/Time: 08/08/2015 2100	

SPOT FORECAST #6A FOR GASQUET CMPLX (4,000 FT and Above)

NATIONAL WEATHER SERVICE EUREKA CA
555 PM PDT SAT AUG 8 2015

FORECAST IS BASED ON REQUEST TIME OF 1601 PDT ON AUGUST 08.
IF CONDITIONS BECOME UNREPRESENTATIVE...CONTACT THE NATIONAL WEATHER SERVICE.

DISCUSSION...MILD AND BELOW NORMAL TEMPERATURES WILL CONTINUE THROUGH THE NEXT COUPLE OF DAYS DUE TO THE SLOW APPROACH OF AN UPPER LEVEL TROUGH OF LOW PRESSURE. MEANWHILE...WINDS WILL REMAIN GENERALLY UNCHANGED...WITH LIGHT TO MODERATE WESTERLY ONSHORE WINDS DURING THE AFTERNOON SUNDAY AND MONDAY...AND LIGHT NORTHERLY WINDS ALONG RIDGELINES AND DOWNSLOPE/DOWNVALLEY WINDS AT LOWER ELEVATIONS OVERNIGHT TONIGHT AND SUNDAY NIGHT. AT THE LOWER ELEVATIONS...A DEEP MARINE LAYER WILL PERSIST OVERNIGHT TONIGHT AND WILL LIKELY RESULT IN A RETURN OF STRATUS AND FOG...ALTHOUGH AT 4000 TO 5000 FEET THIS PARTICULAR LOCATION WILL LIKELY REMAIN ABOVE THE CLOUDS. GIVEN THE COOL TEMPERATURES AND MINIMAL CHANGES IN MOISTURE EXPECTED IN THE NEXT COUPLE OF DAYS...MINIMUM AFTERNOON RH VALUES SHOULD BE SLIGHTLY IMPROVED. MEANWHILE...A LACK OF STRONG OVERNIGHT OFFSHORE WINDS SHOULD ALLOW FOR GOOD OVERNIGHT RH RECOVERIES EVEN ON RIDGE TOPS.

SUNDAY...

SKY/WEATHER.....MOSTLY CLOUDY THEN BECOMING PARTLY CLOUDY.
MAX TEMPERATURE.....63 TO 67.
MIN HUMIDITY.....45 TO 55 PERCENT.
EYE LEVEL WINDS.....NORTH 3 TO 7 MPH EARLY...BECOMING WEST 5 TO 8 MPH
WITH GUSTS TO 12 MPH IN THE AFTERNOON.
SURROUNDING RIDGE...NORTH 5 TO 9 MPH WITH GUSTS TO 12 MPH...BECOMING WEST 5
TO 10 MPH WITH GUSTS TO 15 MPH BY LATE MORNING.
WIND (20 FT).....NORTH 4 TO 8 MPH EARLY...BECOMING WEST 6 TO 9 MPH
WITH GUSTS TO 13 MPH IN THE AFTERNOON.
LAL.....1.
CWR.....0 PERCENT.

SUNDAY NIGHT...

SKY/WEATHER.....MOSTLY CLOUDY THEN BECOMING PARTLY CLOUDY.
MIN TEMPERATURE.....57 TO 60.
MAX HUMIDITY.....60 TO 70 PERCENT.
EYE LEVEL WINDS.....WEST WINDS 5 TO 8 MPH WITH GUSTS TO 12 MPH IN THE
EVENING...BECOMING NORTH AT 3 TO 7 MPH OVERNIGHT.
SURROUNDING RIDGE...WEST WINDS 7 TO 10 MPH WITH GUSTS TO 15 MPH IN
THE EVENING...BECOMING NORTH AT 5 TO 9 MPH OVERNIGHT WITH
OCCASIONAL GUSTS TO 12 MPH.
WIND (20 FT).....WEST WINDS 6 TO 9 MPH WITH GUSTS TO 13 MPH IN THE
EVENING...BECOMING NORTH AT 4 TO 8 MPH OVERNIGHT.
LAL.....1.
CWR.....0 PERCENT.

Division/Group Assignment List (ICS 204 WF)

1. Incident Name:			3.			
GASQUET COMPLEX			Branch:		Division/Group:	
2. Operational Period: 0600 - 0600			A - COON FIRE			
Date/Time From: 08/09/2015 0600	SUN	Date/Time To: 08/10/2015 0600				
4. Operations Personnel						
OPERATIONS CHIEF		NICKIE WASHINGTON DARRELL MILLER		DIVISION/GROUP SUPERVISOR		MITCH FOWLKES DAN O'CONNOR (T)
PLANNING OPS		MATT CONKLIN AARON THOMPSON (T)		AIR ATTACK SUPERVISOR		RON SERABIA
5. Resources Assigned this Period						
Strike Team / Task Force / Resource Designator		LWD	Leader	Number Persons	Drop Off PT./Time	Pick Up PT./Time
TFLD JEREMIAH PHILLIPS O-75		08/20		1	ICP/0630	ICP/1900
TFLD DARIN KEYSE (T) O-78		08/20		1	ICP/0630	ICP/1900
ENG3 SRF 11		08/23		5	ICP/0630	ICP/1900
TFLD KEN VANWIG O-3.18		08/19		1	ICP/0630	ICP/1900
ENG6 PATRICK 14 E-117		08/14	KEITH ROCKOW	3	ICP/0630	ICP/1900
ENG6 DARE ENTERPRISES 32 E-118		08/14	RICO SCHRAFF	3	ICP/0630	ICP/1900
ENG6 ASI 3 E-115		08/15	MICHAEL HOLLOWAY	3	ICP/0630	ICP/1900
HEQB ROBERT HEISEY O-84		08/20		1	ICP/0630	ICP/1900
DOZ2 ROEN 9481 E-90		08/20	PAUL ROEN	1	ICP/0630	ICP/1900
HEQB TIMOTHY LANTERMAN O-83		08/21		1	ICP/0630	ICP/1900
DOZ2 FISK'S TREE E-91		08/21	RICK ANDERSON	1	ICP/0630	ICP/1900
FEMT / FEMT		08/21	RANDOLPH O-133 / VANZINNI O-134	2	ICP/0630	ICP/1900
SOFR (T) / SOFR(T)		08/17	BERG O-146 / O-90	2	ICP/0630	ICP/1900
6. Control Operations/Work Assignments:						
<ul style="list-style-type: none"> SCOUT FOR OPPORTUNITIES TO REACH CONTAINMENT OBJECTIVES. #UTILIZE AND SHARE RESOURCES WITH DIVISION C AS NEEDED. CONSTRUCT INDIRECT DOZER LINE FROM 17N07J ROAD TO THE WEST. TFLD VANWIG E-115,E-117 & E-118 ARE A CONTINGENCY TASK FORCE. 						
7. Special Instructions:						
<ul style="list-style-type: none"> COORDINATE AND ORDER AIRCRAFT FOR RETARDANT NEEDS WITH AIR ATTACK. 						
8. Division/Group Communication Summary						
Function	Channel	RX Frequency N/W	RX Tone/NAC	TX Frequency N/W	TX Tone/NAC	Mode
COMMAND	1	167.1000	162.2	169.7500	162.2	A
TACTICAL	13	167.1125	162.2	167.1125	162.2	A
BACKUP NET	4	168.1250		170.4750	127.3	A
AIR TO GROUND	10	165.3875		165.3875		A
9. Prepared By (Resource Unit Leader)			Approved By (Planning Section Chief)		Date	Time
NANCY MASTERS			DAVE LATTIMORE		08/08/2015	2100

Division/Group Assignment List (ICS 204 WF)

1. Incident Name:			3.			
GASQUET COMPLEX			Branch:		Division/Group:	
2. Operational Period: 0600 - 0600					E - BEAR FIRE	
Date/Time From: 08/09/2015 0600 SUN			Date/Time To: 08/10/2015 0600 MON			
4. Operations Personnel						
OPERATIONS CHIEF		NICKIE WASHINGTON DARRELL MILLER		DIVISION/GROUP SUPERVISOR		DAVID MARTINEZ JOHN OWINGS (T)
PLANNING OPS		MATT CONKLIN AARON THOMPSON (T)		AIR ATTACK SUPERVISOR		RON SERABIA
5. Resources Assigned this Period						
Strike Team / Task Force / Resource Designator		LWD	Leader	Number Persons	Drop Off PT./Time	Pick Up PT./Time
HC1 SMITH RIVER		08/23		20	ICP/0630	ICP/1900
HC2I GRAYBACK 8B C-5		08/12	TIM NYGREN	20	ICP/0630	ICP/1900
HC2 FORT APACHE 3 C-10		08/20	BURNETTE BENNETT	20	ICP/0630	ICP/1900
TFLD S. SISCOE O-79 / N. BALENT (T) 0-209		08/20		2	ICP/0630	ICP/1900
ENG3 UTAH COUNTY 2 E-31		08/19	ANDREW WATSON	4	ICP/0630	ICP/1900
ENG3 PICTURE ROCK 121 E-26		08/20	ROCKY ORTIZ	4	ICP/0630	ICP/1900
ENG3 ARCHER MTN 13 E-28		08/19	JUSTUS BARTON	3	ICP/0630	ICP/1900
ENG6 NV-WID 2616 E-35		08/19	CHAD NIBLETT	3	ICP/0630	ICP/1900
ENG6 WEBER FIRE 661 E-33		08/19	SCOTT HANEY	3	ICP/0630	ICP/1900
ENG6 GREAT BASIN 311 E-34		08/19	TYLER ERSKINE	3	ICP/0630	ICP/1900
WTS2 YREKA OUTLANDS E-19		08/18	ALLEN WILLIAMS	2	ICP/0630	ICP/1900
FAL1 BROWN O-201 / MILLER TIMBER O-204		08/21	D. BROWN / C. GOODSON	4	ICP/0630	ICP/1900
FEMP FELDMAN O-135 / FEMT WICKLAS O-132		08/20		2	ICP/0630	ICP/1900
SOFR BILL KERSHAW (T) O-3.19		08/15		1	ICP/0630	ICP/1900
6. Control Operations/Work Assignments:						
<ul style="list-style-type: none"> • CONTINUE TO HOLD AND IMPROVE LINE ALONG THE 17N03 ROAD. SCOUT FOR OPPORTUNITIES TO REACH CONTAINMENT OBJECTIVES. • IMPROVE ANCHOR POINT AND CONTINUE HANDLINE CONSTRUCTION ON BOTH FLANKS OF FIRE. 						
7. Special Instructions:						
<ul style="list-style-type: none"> • COORDINATE AND ORDER AIRCRAFT FOR RETARDANT NEEDS WITH AIR ATTACK. 						
8. Division/Group Communication Summary						
Function	Channel	RX Frequency N/W	RX Tone/NAC	TX Frequency N/W	TX Tone/NAC	Mode
COMMAND	1	167.1000	162.2	169.7500	162.2	A
TACTICAL	6	166.7750	162.2	166.7750	162.2	A
BACKUP NET	4	168.1250		170.4750	127.3	A
AIR TO GROUND	10	165.3875		165.3875		A
9. Prepared By (Resource Unit Leader)			Approved By (Planning Section Chief)		Date	Time
NANCY MASTERS			DAVE LATTIMORE		08/08/2015	2100

Division/Group Assignment List (ICS 204 WF)

1. Incident Name:			3.			
GASQUET COMPLEX			Branch:		Division/Group:	
2. Operational Period: 0600 - 0600			L/N - PEAK FIRE			
Date/Time From: 08/09/2015 0600 SUN	Date/Time To: 08/10/2015 0600 MON					
4. Operations Personnel						
OPERATIONS CHIEF		NICKIE WASHINGTON DARRELL MILLER		DIVISION/GROUP SUPERVISOR		CANDICE KUTROSKY PAUL MANDOLINI (T)
PLANNING OPS		MATT CONKLIN AARON THOMPSON (T)		AIR ATTACK SUPERVISOR		RON SERABIA
5. Resources Assigned this Period						
Strike Team / Task Force / Resource Designator	LWD	Leader	Number Persons	Drop Off PT./Time	Pick Up PT./Time	
HC2I WHITE MOUNTAIN #1 C-3	08/19	KEITH SARGENT	19	ICP/0630	ICP/1900	
TFLD GREGORY COX O-74	08/18		1	ICP/0630	ICP/1900	
TFLD DALE NEWBY (T) O-73	08/18		1	ICP/0630	ICP/1900	
ENG3 TRI CITY 106 E-25	08/19	ANTHONY GRAINGER	4	ICP/0630	ICP/1900	
ENG3 MONTANA FIRE 341 E-30	08/20	MIKE WARREN	3	ICP/0630	ICP/1900	
ENG4 FIRESTORM 03 E-114	08/14 ¹⁵	BRAD CLEMENS	3	ICP/0630	ICP/1900	
ENG4 CENTRAL WILDFIRE 741 E-116	08/14 ¹⁵	DAVID PARSON	3	ICP/0630	ICP/1900	
ENG6 SANTA CLARA 32 E-37	08/19	GABE RUNOLFSON	2	ICP/0630	ICP/1900	
WTS2 BOWNE WATER SERVICE E-40	08/17	MICHAEL BOONE	1	ICP/0630	ICP/1900	
FAL1 NORTH ZONE FALLERS #1 O-94	08/18	ALAN STEWART	2	ICP/0630	ICP/1900	
FAL1 NORTH ZONE FALLERS #2 O-95	08/18	BILLY BELMONT	2	ICP/0630	ICP/1900	
FAL1 NORTH ZONE FALLERS #4 O-97	08/18	BILL MEADOWS	2	ICP/0630	ICP/1900	
FEMP MATT LUCAS O-137	08/20		1	ICP/0630	ICP/1900	
FEMT TONY CASTANEDA O-131	08/20		1	ICP/0630	ICP/1900	
6. Control Operations/Work Assignments:						
<p><i>FALL McKeller tree O-202</i></p> <ul style="list-style-type: none"> • SECURE ALL FIRE SOUTH OF BOUNDARY TRAIL. •SCOUT FOR OPPORTUNITIES TO REACH CONTAINMENT OBJECTIVES. 						
7. Special Instructions:						
<ul style="list-style-type: none"> • COORDINATE AND ORDER AIRCRAFT FOR RETARDANT NEEDS WITH AIR ATTACK. • USE AIRCRAFT TO MONITOR DIVISION H - WILLIAMS FIRE. 						
8. Division/Group Communication Summary						
Function	Channel	RX Frequency N/W	RX Tone/NAC	TX Frequency N/W	TX Tone/NAC	Mode
COMMAND	1	167.1000	162.2	169.7500	162.2	A
TACTICAL	8	168.0500	162.2	168.0500	162.2	A
BACKUP NET	4	168.1250		170.4750	127.3	A
AIR TO GROUND	10	165.3875		165.3875		A
9. Prepared By (Resource Unit Leader)			Approved By (Planning Section Chief)		Date	Time
NANCY MASTERS			DAVE LATTIMORE		08/08/2015	2100

Division/Group Assignment List (ICS 204 WF)

1. Incident Name:			3.			
GASQUET COMPLEX			Branch:		Division/Group:	
2. Operational Period: 0600 - 0600			W - FEEDER FIRE			
Date/Time From: 08/09/2015 0600 SUN		Date/Time To: 08/10/2015 0600 MON				
4. Operations Personnel						
OPERATIONS CHIEF		NICKIE WASHINGTON DARRELL MILLER		DIVISION/GROUP SUPERVISOR		GLENN WEBB AL WARD (T)
PLANNING OPS		MATT CONKLIN AARON THOMPSON (T)		AIR ATTACK SUPERVISOR		RON SERABIA
5. Resources Assigned this Period						
Strike Team / Task Force / Resource Designator	LWD	Leader	Number Persons	Drop Off PT./Time	Pick Up PT./Time	
TFLD CHAD HYATT O-144	08/16		1	ICP/0630	ICP/1900	
ENG3 GASQUET 214 E-78	08/14	DAVID WOODS <i>BR zur fluehd</i>	4	ICP/0630	ICP/1900	
ENG4 WEBER FIRE DISTRICT 464 E-80	08/14	BARRY LOCKE	4	ICP/0630	ICP/1900	
ENG6 TONTO 1247 E-82	08/16	SHAWN O'CONNELL	7	ICP/0630	ICP/1900	
ENG6 AMERICAN FIRE CO 61 E-86	08/14	MATT MORRELL	3	ICP/0630	ICP/1900	
ENG6 AMERICAN FIRE CO 62 E-85	08/14	MANI MORRELL	3	ICP/0630	ICP/1900	
WTT2 SRF WT15 E-45	08/15	JACOB MC ADAMS	2	ICP/0630	ICP/1900	
WTT2 GASQUET VFD E-88	08/15	SALENA COX	2	ICP/0630	ICP/1900	
FAL1 NORTH ZONE FALLERS #3 O-96	08/18	RICK MEE	2	ICP/0630	ICP/1900	
6. Control Operations/Work Assignments:						
<ul style="list-style-type: none"> CONTINUE PREPPING THE 14N39 ROAD FROM DP30 NORTH TO 14N39G ROAD. CONTINUE PREP FROM DP30 TO W / Z BREAK. SECURE AND HOLD BURNOUT OPERATION ALONG 14N39A ROAD. SCOUT FOR OPPORTUNITY TO REACH CONTAINMENT OBJECTIVES. 						
7. Special Instructions:						
<ul style="list-style-type: none"> COORDINATE AND ORDER AIRCRAFT FOR RETARDANT NEEDS WITH AIR ATTACK. 						
8. Division/Group Communication Summary						
Function	Channel	RX Frequency N/W	RX Tone/NAC	TX Frequency N/W	TX Tone/NAC	Mode
COMMAND	1	167.1000	162.2	169.7500	162.2	A
TACTICAL	12	166.5500	162.2	166.5500	162.2	A
BACKUP NET	4	168.1250		170.4750	127.3	A
AIR TO GROUND	10	165.3875		165.3875		A
9. Prepared By (Resource Unit Leader)			Approved By (Planning Section Chief)		Date	Time
NANCY MASTERS			DAVE LATTIMORE		08/08/2015	2100

AIR OPERATIONS SUMMARY

PREPARED BY: Ted Visser



PREPARED DATE/TIME: 08/08/15 1900

1. INCIDENT NAME: Gasquet Complex

2. OPERATIONAL PERIOD DATE: 08/09/15

START TIME: 0700

END TIME: 2000

SUNRISE: 0618

SUNSET: 2026

3. REMARKS (Safety Notes, Hazards, Air Operations Special Equipment, etc.)

Thunderstorms, erratic winds. Low wires, cables, power lines.

Divisions, contact Helibase for all aviation needs, include coordinates of possible helispot/unimproved landing locations.

Possible smoke concerns.

Track all retardant usage and location if used.

Do not dip from lakes near 41 35.000 x 123 43.00

IP for Air Tankers 41 47.21 X 123 04.40 5000'

Cave HB Gate 10155#

Six Rivers Disp. Air Desk 707-726-1266

Bear Fire Div E, 41 48.928 123 44.678

Coon Fire Div C, 41 45.786 123 57.709

Feeder Fire Div W, 41 35.065 123 50.726

Peak Fire Div L, 41 33.065 123 46.134

Summit Fire Div V, 41 35.000 123 47.800

Williams Fire Div H, 41 35.290 123 45.621

4. MEDEVAC

A/C: 512

5. TFR: 5/7876

Radius: 10 NM

Altitude: 9000 MSL

Centerpoint: N 41 40.00

W 123 50.00

Freq: 128.0750

Flights from Cave Helibase must contact Medford Interagency Air Desk by phone before liftoff and flight follow to the OR border.

6. PERSONNEL

AOBD: Ted Visser

ASGS: Galen Young

ATGS: Ron Serabia

ATGS: Cliff Claridge

HEB1: Melvin Tate

HEB1(T): Rita Clipperton

SEAT Base Mgr (T): Ric Doonan

Phone

619-981-2409

575-574-8720

619-549-4787

480-688-5330

850-849-0405

530-559-0905

760-447-1231

7. FREQUENCIES

AIR/AIR FW:

AIR/AIR RW:

AIR/GROUND CMD:
AIR/GROUND TAC:

COMMAND: RX:
TX:

DECK:

AIR GUARD:

AM

128.0750

165.3875

167.1000
169.7500
Tone 15 162.2

168.6250

FM

166.4500

8. FIXED-WING

Airtankers:

Leadplanes:

ATBase:

ATGS Aircraft:

AAB:

Gary Smith
S-31,32,33
Uni Engine
530-598-1434

Avail / Type/ Make-Model / FAA N# / Base(s)

Available through Dispatch
SEAT 898, A-9
SEAT 820, A-10

Available through Dispatch

N 4579N, A-6
N 1596G, A-8


MIRB: ICL, Joe Hart, 208-699-1166

Cave- HOS Trlr, E-2, Chris Long, 208-539-7108
Cave- 49er WT, E-41 Bobby Alvarez, 619-300-0801

9. HELICOPTERS (Use Additional Sheets As Necessary)

FAA N#	TY	MAKE/MODEL	BASE	AVAILABLE	START	REMARKS	FAA N#	TY	MAKE/MODEL	BASE	AVAILABLE	START	REMARKS
N612CK	1	S-61	Cave	0730	0830								
HT-782	1	S-64	Cave	TBD	TBD								
512	2	Bell 212	Cave	0730	0830	A-42							

INCIDENT RADIO COMMUNICATIONS PLAN (ICS 205)

1. Incident Name: GASQUET COMPLEX		2. Date/Time Prepared: Date: 08/08/2015 Time: 2100		3. Operational Period: 0600 - 0600		Date/Time From: 08/09/2015 0600	Date/Time To: 08/10/2015 0600				
				SUN	MON						
4. Basic Radio Channel Use:											
Zone Group	Ch #	Function	Channel Name/Trunked Radio System Talkgroup	Assignment	RX Freq	RX Tone/NAC	TX Freq	TX Tone/NAC	Mode (A, D, or M)	Remarks	
	1	COMMAND	CMD 1	ALL DIVISIONS	167.1000	162.2	169.7500	162.2	A	SHIP MTN	
	2	COMMAND	CMD 2	UNASSIGNED	000.0000		000.0000		A		
	3	COMMAND	CMD 3	UNASSIGNED	000.0000		000.0000		A		
	4	BACKUP NET	SRF ADM	ALL DIVISIONS	168.1250		170.4750	127.3	A	GORDON MTN	
	5	TACTICAL	NIFC T5	DIV C/H	166.7250	162.2	167.7250	162.2	A		
	6	TACTICAL	NIFC T6	DIV E	166.7750	162.2	166.7750	162.2	A		
	7	TACTICAL	NIFC T7	UNASSIGNED	168.2500	162.2	168.2500	162.2	A		
	8	TACTICAL	NIFC T1	DIV L/N	168.0500	162.2	168.0500	162.2	A		
	9	TACTICAL	NIFC T3	DIV Z	168.6000	162.2	168.6000	162.2	A		
	10	AIR TO GROUND	A/G TAC	ALL DIVISIONS	165.3875		165.3875		A		
	11	AIR TO GROUND	A/G CMD	UNASSIGNED	000.0000		000.0000		A		
	12	TACTICAL	R5 TAC 4	DIV W	166.5500	162.2	166.5500	162.2	A		
	13	TACTICAL	R5 TAC 5	DIV A	167.1125	162.2	167.1125	162.2	A		
	14	TACTICAL	R5 TAC 6	DIV V	168.2375	162.2	168.2375	162.2	A		
	15	EMS TAC	CALCORD	ALL DIVISIONS	156.0750		156.0750	156.7	A	MEDICAL A/G	
	16	AIR GUARD	GUARD	ALL DIVISIONS	168.6250		168.6250	110.9	A	EMERGENCY ONLY	
	20	AIR GUARD	GUARD	ALL DIVISIONS	168.6250		168.6250	110.9	A	EMERGENCY ONLY	
6. Prepared By (Communications Unit Leader)				Name: CHRIS PERRY (T)				Signature: 		Date/Time: 08/08/2015 2100	
ICS 205				IAP Page							



Incident within an Incident Action Plan

Position Assignment Supportive Actions

Division Supervisor

- See items 1-6 on page one
- If unable to access accident/incident location, delegate command to a closer qualified resource

Medical Unit Leader

- Respond to Comm Unit as soon as possible
- Coordinate with Division Supervisor to ensure proper resources are rapidly ordered
- Assign a MEDL to the scene and other positions to support the response as needed
- Monitor condition updates of patient(s) and coordinate response with Operations

Communications Unit Leader

- Maintain clear radio traffic and monitor communications to support response
- Recommend appropriate security and investigative process
- Assess the need for critical Incident Stress Response

Safety Officer

- Provide for Safety personnel on scene as needed
- Recommend appropriate security and investigative process
- Assess the need for critical Incident Stress Response

Air Attack Supervisor

- Obtain coordinates of the emergency location
- Coordinate air-medical response
- Assist and support the designated Point of Contact with communications and coordination of the emergency response as necessary

IC, Command & General Staff

- Manage the emergency and direct specific responsibilities to individual positions to provide an appropriate response
- Notify the host unit and host dispatch center of the size-up information
- Constantly monitor and assess the appropriate response and adapt direction as needed
- Submit all documentation pertaining to the emergency to the Plans Chief

Reference the full Incident Medical Emergency Plan for additional



Health & Safety Message

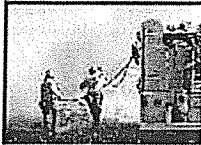
Incident: Gasquet Complex CA-SRF-001488	Date/Op Period: 8/9-10/2015 0600-0600
--	--

Hazards & Risks

Caution:

When in the fire area, personal protective clothing is required by all!

"Everyone", no exceptions!!!!



Hazardous conditions:

Narrow roadways.

Blind corners.

Steep terrain on mid slope roads.

Smoky conditions.

Please drive defensively and slow down.

Extreme fire conditions

- Safety zones and escape routes with a look are mandatory?



1. FIRE NOT SCOUTED AND SIZED UP

Are you aware of the extreme conditions that exist, such as?

- Wind reversals.
 - Low fuel moisture.
 - Tree torching.
 - Rapid rates of spread.
 - Spot fires over the line.
- It's important to put a qualified person in place as look-out.

Prepared By: John Bates SOF-2

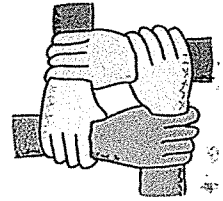
Approved By: James Aragon SOF-2

L. Lookouts C. Communications E. Escape Routes S. Safety Zones

BE MINDFUL



Human Resource Message



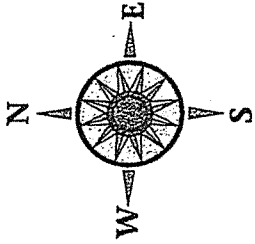
Be situationally aware about our Host - Gasquet, CA

- Pronounced GAS-kee
- Local tribal governments include the Elk Valley Rancheria and the Smith River Rancheria. Please respect the People and cultural sites.
- Had a population of 661 in 2010.
- Its home to the Smith River National Recreation Area. The Smith River is the largest undammed Wild and Scenic River in the lower 48 States.
- Is reputed to be the rainiest place in California with an average annual rainfall of 95 inches. Record annual rainfall was set in the 1970s with 240 inches at Camp 6.
- The town's name is in honor of Horace Gasquet, its first Postmaster.

-Kathy Greyn, Human Resource Specialist, 909-731-1771-

ICP

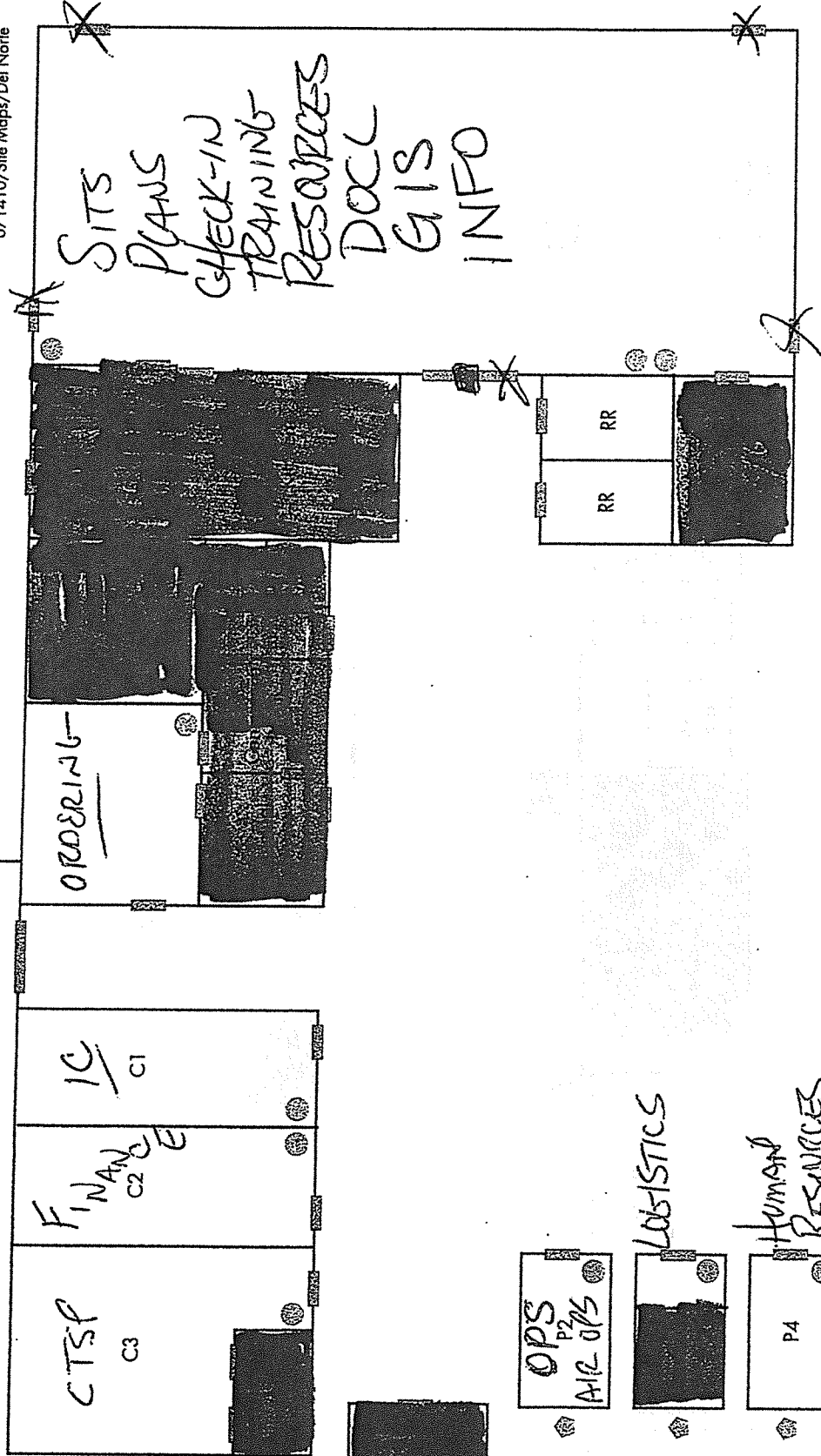
Mountain School
55 Azalea Lane
Gasket, CA 95543
(707) 457-3211



P	Portable	Fire Alarm Panel
C	Classroom	Water Shut Off
Exit/Door	Exit/Door	Electrical Shut Off
Fire Extinguisher	Fire Extinguisher	

071410/Site Maps/Del Norte

Knox Box



OPS
P2
AIR OPS

LOGISTICS

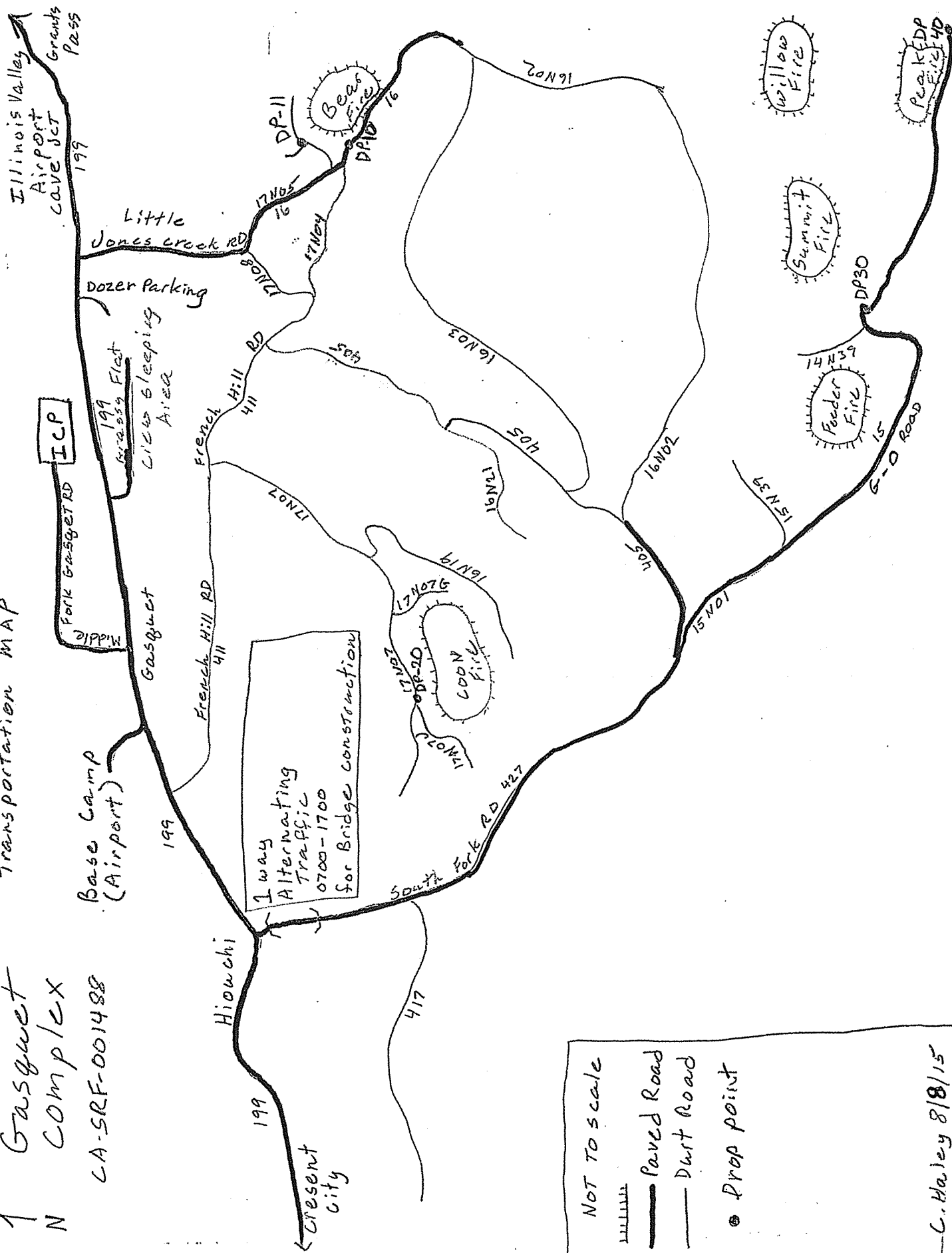
HUMAN
RESOURCES
P4

[Redacted]

8/7/2015

1 Gasquet
N CA-SRF-001488

Transportation MAP



NOT TO SCALE
 Paved Road
 Dirt Road
 Prop point
 C. Haley 8/8/15