

NRA Lightning

Incident Action Plan

August 3rd, 2015 Day Shift
0600-2000

Complacency- The first step to an accident involves the false belief that experience makes you invulnerable.

- **Many accidents happen at later stages of the fire**
- **Be mindful of every action and ask yourself what could go wrong**
- **Determine mitigations and employ them for the things that could go wrong before taking any action**



Smith River NRA Six Rivers N.F.
P5EK11 0510

INCIDENT OBJECTIVES	1. Incident Name	2. Date Prepared	3. Time Prepared
	NRA Lightning	08/02/15	2130
4. Operational Period Day 0600-2000			
5. General Control Objectives For The Incident (Include Alternatives)			
<p>Provide for firefighter and public safety by continuously employing the risk management process.</p> <p>Use established anchor points to gain containment throughout shift.</p> <p>Implement tactics which increase probabilities of success while holding existing containment.</p>			
6. Weather Forecast For Period			
See inclosed Forecast			
7. General Safety Message			
<p>Ensure LCES is in place before engagement.</p> <p>Be Aware of danger trees.</p> <p>Base all actions on reasonable worst case fire behavior.</p> <p>Drive Defensively</p> <p>Monitor weather for any changes, especially thunderstorms.</p>			
8. ATTACHEMENTS (X IF ATTACHED)			
<input checked="" type="checkbox"/> Organization List - ICS 203 <input checked="" type="checkbox"/> Medical Plan - ICS 206 <input checked="" type="checkbox"/> 215a <input checked="" type="checkbox"/> Division Assignment Lists - ICS 204 <input checked="" type="checkbox"/> Incident Map <input checked="" type="checkbox"/> 6 Minutes for Safety <input checked="" type="checkbox"/> Communications Plan - ICS 205 <input type="checkbox"/> Traffic Plan <input checked="" type="checkbox"/> Weather Forecast			
9. Prepared By (Planning Section Chief)		10. Approved By (Incident Commander)	
M.S.Frederick			

ORGANIZATION ASSIGNMENT LIST		9. Operations Section	
1. Incident Name		Chief	Dale Middleton
NRA Lightning		Deputy	
2. Date		a. Branch I - Divisions/Groups	
08/03/2015	3. Time	Branch Director	
4. Operational Period		Deputy	
DAY 0600-2000		Division/Group	
5. Incident Commander and Staff		Division/Group	
Incident Commander	Mike Frederick	TFLD	Chris Tweed
Deputy		TFLD	Nick Balent
Safety Officer	Mike Frederick	TFLD	Shawn O'Connell
Information Officer		b. Branch II - Divisions/Groups	
Liaison Officer		Branch Director	
6. Agency Representatives		Deputy	
Agency	Name	Division/Group	
USFS	Dave Palmer	Division/Group	
		Division/Group	
		Division/Group	
		c. Branch III - Divisions/Groups	
7. Planning Section		Branch Director	
Chief	Mike Frederick	Deputy	
Deputy		Division/Group	
Resources Unit	Sheila Balent	Division/Group	
Situation Unit		Division/Group	
Documentation Unit		Division/Group	
Demobilization Unit		d. Air Operations Branch	
Technical Specialists		Air Operations Branch Director	
Human Resources		Air Attack Supervisor	
Training		Air Support Supervisor	
		Helicopter Coordinator	
		Air Tanker Coordinator	
8. Logistics Section		10. Finance Section	
Chief	Doug Winn	Chief	Jaisy Scott
Deputy		Deputy	
Supply Unit		Time Unit	
Facilities Unit		Procurement Unit	
Ground Support Unit		Compensation/Claims Unit	
Communications Unit		Cost Unit	
Medical Unit		Prepared by (Resource Unit Leader)	
Security Unit			
Food Unit			

DIVISION ASSIGNMENT LIST				1. Branch		2. Division/Group Feeder	
3. Incident Name *NRA Lightning				4. Operational Period Day Date: 08/03/15		Time:	
5. Operations Personnel							
Operations Chief		Dale Middleton		Task Force Leader		Shawn O'Connell	
Branch Director				Air Attack Supervisor No.			
6. Resources Assigned This Period							
Strike Team/Task Force/ Resource Designator	Leader	Number Persons	Trans Needed	Drop Off PT/Time	Pick Up PT/Time		
WT 15	McAdams	2	No	0630	2000		
E-7	O'Connell	5	No	0630	2000		
E-464	Locke	4	No	0630	2000		
7. Control Operations Establish anchor point and determine best strategy for existing resources. Implement tactics to achieve highest containment possible during shift.							
8. Special Instructions Refine correct Lat/Long Get GPS perimeter and update size estimate if possible							
9. Division/Group Communication Summary							
Function	Frequency	System	Channel	Function	Frequency	System	Channel
Command	ADM RPTR	King NIFC	2	Logistics		King NIFC	
Tactical Div/Group	R5 Project	King NIFC	3	Air to Ground	A/G Pri	King NIFC	6
Prepared By (Resource Unit Leader)		Approved By (Planning Sect. Ch.)			Date	Time	

DIVISION ASSIGNMENT LIST		1. Branch		2. Division/Group Bear Fire			
3. Incident Name *NRA Lightning		4. Operational Period Day Date: 08/03/15		Time:			
5. Operations Personnel							
Operations Chief		Dale Middleton		Task Force Leader		Nick Balent	
Branch Director				Air Attack Supervisor No.			
6. Resources Assigned This Period							
Strike Team/Task Force/ Resource Designator	Leader	Number Persons	Trans Needed	Drop Off PT/Time	Pick Up PT/Time		
WT 75	Salena	2	No	0630	2000		
E-11	O'Brien	4	No	0630	2000		
E-379	Angell	4	No	0630	2000		
E-241	Woods	4	No	0630	2000		
E-2180	Smyser	3	No	0630	2000		
7. Control Operations Establish anchor point and determine best strategy for existing resources. Implement tactics to achieve highest containment possible during shift.							
8. Special Instructions Refine correct Lat/Long Get GPS perimeter and update size estimate if possible							
9. Division/Group Communication Summary							
Function	Frequency	System	Channel	Function	Frequency	System	Channel
Command	ADM RPTR	King NIFC	2	Logistics		King NIFC	
Tactical Div/Group	R-5 Project	King NIFC	3	Air to Ground	A/G Pri	King NIFC	6
Prepared By (Resource Unit Leader)		Approved By (Planning Sect. Ch.)			Date	Time	

DIVISION ASSIGNMENT LIST		1. Branch		2. Division/Group Coon Fire			
3. Incident Name *NRA Lightning		4. Operational Period		Day			
		Date:		Time:			
		08/03/15					
5. Operations Personnel							
Operations Chief		Dale Middleton		Task Force Leader		Chris Tweed	
Branch Director				Air Attack Supervisor No.			
6. Resources Assigned This Period							
Strike Team/Task Force/ Resource Designator		Leader		Number Persons	Trans Needed	Drop Off PT/Time	Pick Up PT/Time
E-62		Morrell		3	No	0630	2000
E-5031		Bergem		3	No	0630	2000
E-331		Avery		4	No	0630	2000
7. Control Operations Establish anchor point and determine best strategy for existing resources. Implement tactics to achieve highest containment possible during shift.							
8. Special Instructions Refine correct Lat/Long Get GPS perimeter and update size estimate if possible							
9. Division/Group Communication Summary							
Function	Frequency	System	Channel	Function	Frequency	System	Channel
Command	ADM RPTR	King NIFC	2	Logistics		King NIFC	
Tactical Div/Group	Tac-2	King NIFC	4	Air to Ground	A/G Pri	King NIFC	6
Prepared By (Resource Unit Leader)		Approved By (Planning Sect. Ch.)			Date		Time

DIVISION ASSIGNMENT LIST		1. Branch		2. Division/Group Divide, Go			
3. Incident Name *NRA Lightning		4. Operational Period Date: 08/03/15		Day Time:			
5. Operations Personnel							
Operations Chief	Dale Middleton		Task Force Leader				
Branch Director			Air Attack Supervisor No.				
6. Resources Assigned This Period							
Strike Team/Task Force/ Resource Designator	Leader	Number Persons	Trans Needed	Drop Off PT/Time	Pick Up PT/Time		
E-169	Pickering	3	No	0600	2000		
7. Control Operations Patrol and mop up 100% on both fires Patrol GO Road and surrounding areas for new fires Notify Operations of new fires							
8. Special Instructions Refine correct Lat/Long Get GPS perimeter and update size estimate if possible Use of chainsaws, pumps and helicopters is approved							
9. Division/Group Communication Summary							
Function	Frequency	System	Channel	Function	Frequency	System	Channel
Command	ADM RPTR	King NIFC	2	Logistics		King NIFC	
Tactical Div/Group	Tac 2	King NIFC	4	Air to Ground	A/G Pri	King NIFC	6
Prepared By (Resource Unit Leader)		Approved By (Planning Sect. Ch.)			Date	Time	

DIVISION ASSIGNMENT LIST				1. Branch South Wilderness		2. Division/Group Peak, Williams, Summit	
3. Incident Name *NRA Lightning				4. Operational Period Day Date: 08/03/15 Time:			
5. Operations Personnel							
Operations Chief		Dale Middleton		Task Force Leader			
Branch Director				Air Attack Supervisor No.			
6. Resources Assigned This Period							
Strike Team/Task Force/ Resource Designator	Leader	Number Persons	Trans Needed	Drop Off PT/Time	Pick Up PT/Time		
E-61	Morrell	3	No	0600	2000		
7. Control Operations Monitor and notify Operations of fire growth							
8. Special Instructions Refine correct Lat/Long Get GPS perimeter and update size estimate if possible Use of chainsaws, pumps and helicopters is approved							
9. Division/Group Communication Summary							
Function	Frequency	System	Channel	Function	Frequency	System	Channel
Command	ADM RPTR	King NIFC	2	Logistics		King NIFC	
Tactical Div/Group	Tac 2	King NIFC	4	Air to Ground	A/G Pri	King NIFC	6
Prepared By (Resource Unit Leader)			Approved By (Planning Sect. Ch.)			Date	Time

DIVISION ASSIGNMENT LIST				1. Branch Wilderness		2. Division/Group Paw			
3. Incident Name *NRA Lightning				4. Operational Period Day Date: 08/03/15				Time:	
5. Operations Personnel									
Operations Chief		Dale Middleton		Task Force Leader					
Branch Director				Air Attack Supervisor No.					
6. Resources Assigned This Period									
Strike Team/Task Force/ Resource Designator		Leader		Number Persons	Trans Needed	Drop Off PT/Time	Pick Up PT/Time		
Smoke Jumpers		Norvelle		9	Yes				
7. Control Operations Construct line around fire perimeter Establish anchor point and determine best strategy for existing resources. Implement tactics to achieve highest containment possible during shift.									
8. Special Instructions Refine correct Lat/Long Get GPS perimeter and update size estimate if possible Use of chainsaws, pumps and helicopters is approved									
9. Division/Group Communication Summary									
Function	Frequency	System	Channel	Function	Frequency	System	Channel		
Command	ADM RPTR	King NIFC	2	Logistics		King NIFC			
Tactical Div/Group	Tac 2	King NIFC	4	Air to Ground	A/G Pri	King NIFC	6		
Prepared By (Resource Unit Leader)		Approved By (Planning Sect. Ch.)			Date		Time		

INCIDENT RADIO COMMUNICATIONS PLAN

1. Incident Name **NRA Lightning** 2. Date/Time Prepared **08/02/2015 2130** 3. Operational Period Date/Time **08/03/2015 Day**

4. BASIC RADIO CHANNEL UTILIZATION

Radio Type/Cache	Channel	Function	Frequency/Tone	Assignment	Remarks
King NIFC	2	Command	tx168.1250 rx170.4750 Tones 12 or 4	Command for all areas	
King NIFC	3 R5 Project	Tactical	Tx/rx 168.6625	For Bear and Patrol/IA grp	
King NIFC	4 Tac 2	Tactical	Tx/rx 168.2000	For Coon and Wilderness fires	
King NIFC	6 A/G Pri	Air to Ground	Tx/rx 167.6000	Primary Air to Ground	
King NIFC					
King NIFC					
King NIFC					
King NIFC					
King NIFC					

5. Prepared By (Communications Unit)

ICS 205

NFS 1330

MEDICAL PLAN (ICS 206 WF)

1. Incident/Project Name	2. Operational Period
	Date/Time

3. Ambulance Services: For Any Ambulance Request, Go through Dispatch - Radio or Phone# 911

Name	Complete Address	Phone EMS Frequency	Advanced Life Support (ALS) Yes No	
Del Norte Ambulance	Station 2 2600 Morehead Rd Crescent City CA 95531	911 Office: 707-487-1116	YES	
Gasquet Fire Protection District V.F.D	Fire House Rd Gasquet CA 95543	911 Office: 707-457-3294		No

4. Air Ambulance Services: For Any Air Ambulance Request, Go through Dispatch - Radio or Phone# 707-726-1266

Name	Phone / Always Have Frequency	Type of Aircraft & Capability
Mercy Air Ambulance 105 2020 Milligan Way - Medford, OR. 97504	Gen/Order: 1-800-903-9000 Freq: Cal-Cord	Type 3 BMBB Aircraft -Need Approved/Optimal LZ for extraction. Night Vision Infrared ALS with Flight Nurse.
CHP H-14 or H-16 Redding CA	Gen/Order: 530-225-2040 Freq: Cal-Cord	Type 3 A-Star B3 Aircraft - LZ or Hoist w/straps/Bauman Bag (Stokes Litter @ Request)Capable up to 450 lbs. 165' ft. Night Vision Infrared. ALS/BLS at least one Paramedic and/or EMT
Cal-Fire Kneeland Helitack H-102	Station 707- 444-2863 Freq: CDF Air to Ground	Type 2 Bell 205 Aircraft -LZ or Hoist w/straps/Bauman Bag Stokes Litter and Basket, capable up to 600 lbs. 250' ft. BLS EMT only
Coast Guard Air Station Humboldt Bay	Emergency 707-839-6100 Op's 707-839-6113 Com's 707-839-6117 Freq: Assigned	Type 3 MH-65 Aircraft - LZ, or Hoist w/straps/Bauman Bag/Stokes Litter. capable up to 600 lbs. @ 240' ft. Night Vision BLS EMTs only
Reach 5 Air Medical 1524 East Street Redding CA 96002	David Brown General Manager: 530-351-5148 Freq: Cal-Cord	Type 3 Bell 407 Aircraft -Need Approved/Optimal LZ for extraction. Night Vision ALS Paramedic with Flight Nurse.
PHI Air Medical 43 5900 Old Oregon Trail Redding CA 96002	Gen/Order: 1-800-597-9571 Freq: Cal-Cord	Type 3 EC135 Aircraft - Need Approved/Optimal LZ for extraction. Night Vision, ALS Paramedic with Flight Nurse.

5. Hospitals

Name Complete Address	GPS Datum - WGS 84 Coordinate Standard Degrees Decimal Minutes DD° MM.MMM' N - Lat DD° MM.MMM' W - Long	Travel Time		Phone	Helipad		Level of Care Facility
		Air	Gnd		Yes	No	
Sutter Coast Hospital 800 E Washington Blvd, Crescent City, CA 95531	Lat: N 41° 46.454 Long: W 124° 11.537		25min	Gen: 707- 464-8511 ER: 707-464-8888	<input type="checkbox"/>	<input checked="" type="checkbox"/>	Local Aid Level 4 Trauma Hospital
Three Rivers Medical Center 500 Ramsey Ave Grants Pass Or 97527	Lat: N 42° 25.297 Long: W 123° 20.540	30min	1.25hr	Gen/ER: 541-472-7000	<input type="checkbox"/>	<input checked="" type="checkbox"/>	Level 3 Trauma Hospital
Rouge Valley Medical Center 2825 E Barnett Rd Medford, OR 97504	Lat: N 42° 19.8 Long: W 122° 48.19	40min	2hr	Gen/ER: 541-789-7000	<input checked="" type="checkbox"/>	<input type="checkbox"/>	Level 2/3 Trauma Hospital
Mercy Medical Center 2175 Rosaline Avenue Redding, 96001	Lat: N 40 34.29' Long: W 122 23.67'	1.5hr	4.5hr	Gen/ER: 530-225-6000	<input checked="" type="checkbox"/>	<input type="checkbox"/>	Level 2 Trauma Hospital
U.C Davis Medical Center 2315 Stockton Blvd Sacramento, 95817	Lat: N 38° 33.17' Long: W 121° 27. 21'	2.5hr	6.5hr	Gen: 916-734-2011 Trauma: 916-703-3011 Burn: 916-734-3939	<input checked="" type="checkbox"/>	<input type="checkbox"/>	Level 1 Trauma Hospital and Burn Center

6. Project Site Location Group	Area Location Capability On Scene:		
	Point of Contact:	Medical I.C	
	EMS Responders & Capability:		
	Equipment Available on Scene:	BLS-Trauma Kit, O ₂ with C-Spin and Back Board Immobilization	
	Medical Emergency Channel:		
	ETA for Ambulance to Scene:	Air:	Ground:
	Approved Helispot:	Lat:	Long:

7. Prepared By (Medical Unit Leader)	8. Date/Time	9. Reviewed By (Safety Officer)	10. Date/Time
James M. Scott MEDL(t)	05/14/2014		

MEDICAL PLAN (ICS 206 WF)

Medical Incident Report					
FOR ALL MEDICAL EMERGENCIES: IDENTIFY ON SCENE INCIDENT COMMANDER BY NAME AND POSITION AND ANNOUNCE "MEDICAL EMERGENCY" TO INITIATE RESPONSE FROM IMT COMMUNICATIONS/DISPATCH.					
Use items one through nine to communicate situation to communications/dispatch.					
1. CONTACT COMMUNICATIONS/DISPATCH <i>Ex: "Communications, Div. Alpha. Stand-by for Priority Medical Incident Report." (If life threatening request designated frequency be cleared for emergency traffic.)</i>					
2. INCIDENT STATUS: Provide incident summary and command structure.					
Nature of Injury/Illness			Describe the injury <i>(Ex: Broken leg with bleeding)</i>		
Incident Name			Geographic Name + "Medical" <i>(Ex: Trout Meadow Medical)</i>		
Incident Commander			Name of IC		
Patient Care			Name of Care Provider <i>(Ex: EMT Smith)</i>		
3. INITIAL PATIENT ASSESSMENT: Complete this section for each patient. This is only a brief, initial assessment. Provide additional patient info after completing this 9 Line Report.					
Number of Patients:	Male / Female	Age:	Weight:		
Conscious? <input type="checkbox"/> YES	<input type="checkbox"/> NO = MEDEVAC!				
Breathing? <input type="checkbox"/> YES	<input type="checkbox"/> NO = MEDEVAC!				
Mechanism of injury: <i>What caused the injury?</i>					
Lat/Long (Datum WGS84) <i>Ex: N 40° 42.45' x W 123° 03.24'</i>					
4. SEVERITY OF EMERGENCY, TRANSPORT PRIORITY					
SEVERITY			TRANSPORT PRIORITY		
<input type="checkbox"/> URGENT-RED Life threatening injury or illness. <i>Ex: Unconscious, difficulty breathing, bleeding severely, 2° - 3° burns more than 4 palm sizes, heat stroke, disoriented.</i>			Ambulance or MEDEVAC helicopter. Evacuation need is IMMEDIATE.		
<input type="checkbox"/> PRIORITY-YELLOW Serious Injury or illness. <i>Ex: Significant trauma, not able to walk, 2° - 3° burns not more than 1-2 palm sizes.</i>			Ambulance or consider air transport if at remote location. Evacuation may be DELAYED.		
<input type="checkbox"/> ROUTINE-GREEN Not a life threatening injury or illness. <i>Ex: Sprains, strains, minor heat-related illness.</i>			Non-Emergency. Evacuation considered Routine of Convenience.		
5. TRANSPORT PLAN:					
Air Transport: (Agency Aircraft Preferred)					
<input type="checkbox"/> Helispot		<input type="checkbox"/> Short-haul/Hoist		<input type="checkbox"/> Life Flight	
				<input type="checkbox"/> Other	
Ground Transport:					
<input type="checkbox"/> Self-Extract		<input type="checkbox"/> Carry-Out		<input type="checkbox"/> Ambulance	
				<input type="checkbox"/> Other	
6. ADDITIONAL RESOURCE/EQUIPMENT NEEDS:					
<input type="checkbox"/> Paramedic/EMT(s)		<input type="checkbox"/> Crew(s)		<input type="checkbox"/> SKED/Backboard/C-Collar	
<input type="checkbox"/> Burn Sheet(s)		<input type="checkbox"/> Oxygen		<input type="checkbox"/> Trauma Bag	
<input type="checkbox"/> Medication(s)		<input type="checkbox"/> IV/Fluid(s)		<input type="checkbox"/> Cardiac Monitor/AED	
<input type="checkbox"/> Other (i.e. splints, rope rescue, wheeled litter)					
7. COMMUNICATIONS:					
Function	Channel Name/Number	Receive (Rx)	Tone/NAC *	Transmit (Tx)	Tone/NAC *
<i>Ex: Command</i>	<i>Forest Rpt, Ch. 2</i>	<i>168.3250</i>	<i>110.9</i>	<i>171.4325</i>	<i>110.9</i>
COMMAND					
AIR-TO-GRND					
TACTICAL					
*(NAC for digital radio system)					
8. EVACUATION LOCATION:					
Lat/Long (Datum WGS84) <i>EX: N 40 42.45' x W 123 03.24'</i>					
Patient's ETA to Evacuation Location:					
Helispot/Extraction Size and Hazards:					
9. CONTINGENCY:					
Considerations: <i>If primary options fail, what actions can be implemented in conjunction with primary evacuation method? Be thinking ahead...</i>			REMEMBER: Confirm ETA's of resources ordered Act according to your level of training Be Alert. Keep Calm. Think Clearly. Act Decisively.		

INCIDENT RISK ANALYSIS
NRA lightning Fires
(ICS 215A) August 3rd, 2015 Day Shift 0600-2000

DIV	HAZARDOUS ACTIONS / CONDITIONS	MITIGATIONS / WARNINGS / REMEDIES
ALL	Transfer of Command	<ul style="list-style-type: none"> • Make sure instructions are given and understood. • Establish leadership and stay within Span of Control. • SoCal Team 2 will be shadowing today.
ALL	Communications	<ul style="list-style-type: none"> • Ensure you have received the most current communications plan, and your radios have been cloned to it before heading out to your work area. • TEST your radio before you leave camp to ensure you have commo, and then TEST again when you arrive at your work area. • Use human repeaters in areas with sketchy commo. • Refer to the 5 communication responsibilities listed on page ix in the 2014 IRPG
ALL	Driving Hazards	<ul style="list-style-type: none"> • Washboard conditions are common on most of the native surface roads. . Maintain adequate following distances. Reduce speed in Developed Areas. Be watchful of local traffic. • Drive with your headlights on. Look before backing and use backders. • Maintain driving situational awareness. • SEAT BELTS ON...LIGHTS ON...BEFORE wheels turn! • Reduce driving speeds to allow for reaction time lag. • Drive Defensively! Expect the unexpected around every curve. • Don't drive when fatigued. Adhere to agency driving regulations and guidelines.
ALL	Hydration & Heat Illness	<ul style="list-style-type: none"> • Pre-hydrate, Re-hydrate! Dehydration is preventable.....Drink a <u>minimum</u> of 250ml/hour; (¼ of canteen) • Drink water & Electrolyte drinks before, during, and after shifts. (2 waters to 1 sports drink). • Do NOT mix with water or dilute electrolyte drink. It must be consumed as is for the body to absorb properly. • Low volumes of dark, concentrated urine or painful urination indicate a serious need for rehydration, & medical attention. • Ensure your crews take an adequate water/electrolyte supply out to assignment and order more as needed. Take frequent snack breaks to keep blood sugar levels up. • Pace work to avoid heat injuries • Heat exhaustion is characterized by: Weakness, Extreme Fatigue, Nausea, Dizziness & Headaches, clammy skin, persistent muscle cramps, decreased urine output. <ul style="list-style-type: none"> ○ Cool patient as quickly as possible! ○ Move patient to a cooler location and provide cold water and sports drink. ○ Actively reduce core temperature through evaporation by fanning patient. ○ Cover head and neck with wet cloth, increase air movement. ○ Heat exhaustion is characterized by: Weakness, Extreme Fatigue, Nausea, Dizziness Headaches, clammy skin, persistent muscle cramps, decreased urine output. ○ Remove Patient from fireline and seek medical attention. • <u>Mental confusion may develop. This is a serious trigger point for the potential onset of Heat Stroke.</u> • Refer to Medical Plan for additional EMS care and Evacuation
ALL	Biting, Stinging Insects (Rattle Snakes, Scorpions, Bees, Mosquitoes, Ticks, etc)	<ul style="list-style-type: none"> • If allergic to bee stings, let your TFLD & EMT's know. • Leave the snakes alone! • Shake out boots and or sleeping bags prior to use • Check yourself daily for tick bites.
ALL	Aircraft Operations	<ul style="list-style-type: none"> • Ensure resources are clear of "Target Area" during bucket or retardant use. • Use air-to-ground frequency to communicate with aircraft. • Use clear, concise statements when directing aircraft. Use clock directions from pilot's perspective and mirror flashes. • Consider risk vs gain • Keep non-essential personnel away from dip sites (natural and/or man made)
ALL	Fire Behavior	<ul style="list-style-type: none"> • High rates of spread (ROS) when aligned with wind & topography. • Ensure a solid anchor point and flank. • Use experienced LOOKOUTS under these conditions. • Monitor weather conditions. Be aware of visual indicators (clouds, WX obs., cold front passage) • Maintain adequate escape routes and safety zones. Set trigger points when appropriate. Communicate any changes. • Spotting Potential still exists....."Eyes to the green" • Be aware of Low RH's affecting all fuels. POI back to 80-100% with high temps.
INCIDENT NAME NRA Lightning Fires ICS 215a		DATE PREPARED: <p style="text-align: center;">August 2, 2015</p> OPERATIONAL PERIOD Day Shift 8/3/2015, 0600-2000 Prepared by: M.Frederick



MY SAFETY

Miscellaneous Category

An important aspect of safety is individual responsibility for one's own health & safety. Even with the best supervision, each individual firefighter will occasionally be required to make personal decisions concerning their safety. It is important that individual responsibility be taught as the basis for a viable safety program. Some of those individual responsibilities are:

- Fitness for duty. Begin each work shift both mentally and physically prepared for the rigors of wildland firefighting. Getting adequate sleep, maintaining a healthy diet, and proactively participating in physical training are the foundation of "My Safety".
- Utilization of personal protective equipment. Wear your PPE without being told. Each individual is responsible for performing their own risk assessments. If a hazard is identified that can be mitigated by wearing a particular PPE component it should be utilized. Fireline supervisors have more important duties to focus on other than performing glove patrol.
- Following safe work practices. Using a spotter when backing up vehicles is the prudent and professional course of action. If you are unsure of how to perform a job task safely, ask your supervisor or experienced coworker.
- Using the correct reference materials is an important aspect of safety. You should have a working knowledge of the Red Book, FLHB, IRPG, and your local operating guidelines.
- Ensure instructions are clearly understood. Communication is a basic responsibility for all fire personnel. Ask appropriate questions to clarify uncertain issues. Speak up when you observe hazards that may place yourself or others at risk.
- Maintain situational awareness at all times. Awareness is a vital component of "My Safety". Pay attention to what is happening around your area of operations. Always display an awareness of what is happening around you by asking questions or making comments.

Summary: Do not expect someone else to be responsible for your safety. Take it upon yourself to make "My Safety" your number one priority.

Discussions points:

1. Talk about ways you can improve on your safety.
2. Have your supervisor talk about their expectations for individual safety.

References: IRPG, Fireline HB, Health & Safety Code

Have an idea? Have feedback? Share it.

[ONLINE](#) | MAIL: 6 Minutes For Safety Subcommittee • 3833 S. Development Ave • Boise, ID 83705 | FAX: 208-387-5250

[6 Minutes Home](#)

[Back to Main Page](#)

Fire Weather Forecast for CAZ203

FNUS56 KEKA 030200 AAA
FWFEKA

FIRE WEATHER PLANNING FORECAST FOR NORTHWEST CALIFORNIA...UPDATED
NATIONAL WEATHER SERVICE EUREKA CA
700 PM PDT SUN AUG 2 2015

...RED FLAG WARNING CANCELLED...
...ISOLATED THUNDERSTORMS MAY DEVELOP AFTER MIDNIGHT ACROSS
PORTIONS OF TRINITY COUNTY...

.DISCUSSION...A WEAK UPPER DISTURBANCE MAY ALLOW ISOLATED
THUNDERSTORMS TO DEVELOP ACROSS PORTIONS OF TRINITY COUNTY AFTER
MIDNIGHT TONIGHT. ANY STORMS THAT DEVELOP ARE EXPECTED TO PRODUCE
LITTLE...IF ANY...RAINFALL. WINDS ARE EXPECTED TO REMAIN LIGHT AND
TERRAIN DRIVEN...BUT COULD BECOME GUSTY AND ERRATIC AROUND
THUNDERSTORMS. OVERNIGHT RH RECOVERIES WILL CONTINUE TO BE FAIRLY
GOOD THE NEXT FEW NIGHTS...EXCEPT FOR THE HIGHEST RIDGETOPS.

CAZ203-204-031345-
UPPER SMITH...INLAND PORTION OF THE SMITH RIVER DRAINAGE WITHIN
THE SIX RIVERS NF.-
LOWER MIDDLE KLAMATH...INLAND PORTION OF THE KLAMATH RIVER
DRAINAGE WITHIN THE SIX RIVERS NATIONAL FOREST AND THE UKONOM
DISTRICT OF THE KLAMATH NATIONAL FOREST.-
700 PM PDT SUN AUG 2 2015

...RED FLAG WARNING CANCELLED...

.TONIGHT...
* SKY/WEATHER...MOSTLY CLOUDY WITH HAZE.
* MIN TEMPERATURE...57-65.
* MAX HUMIDITY...74-89 PERCENT.
* 20-FOOT WINDS...
VALLEYS/SLOPES.....WEST WINDS 5 TO 6 MPH IN THE
EVENING...BECOMING LIGHT WINDS 2 TO 4 MPH.
RIDGES.....WEST WINDS 5 TO 6 MPH IN THE
EVENING...BECOMING VARIABLE 2 TO 4 MPH.
* LAL....1.
* CHC OF WETTING RAIN...0 PERCENT.

.MONDAY...
* SKY/WEATHER...PARTLY CLOUDY. SLIGHT CHANCE OF LIGHT RAIN SHOWERS
AND THUNDERSTORMS. HAZE.
* MAX TEMPERATURE...78-88.
* MIN HUMIDITY...28-38 PERCENT.
* 20-FOOT WINDS...
VALLEYS/SLOPES.....UPSLOPE/UPVALLEY 2 TO 4 MPH...BECOMING
WEST 5 TO 6 MPH IN THE AFTERNOON.
RIDGES.....VARIABLE 2 TO 4 MPH...BECOMING WEST 5 MPH
IN THE AFTERNOON.
* LAL....2.

* CHC OF WETTING RAIN...0 PERCENT.

.MONDAY NIGHT...

* SKY/WEATHER...PARTLY CLOUDY. SLIGHT CHANCE OF LIGHT RAIN SHOWERS AND THUNDERSTORMS. HAZE.

* MIN TEMPERATURE...56-64.

* MAX HUMIDITY...74-89 PERCENT.

* 20-FOOT WINDS...

VALLEYS/SLOPES.....NORTHWEST WINDS 5 TO 6 MPH IN THE EVENING...BECOMING DOWNSLOPE/DOWNVALLEY 2 TO 4 MPH.

RIDGES.....NORTHWEST WINDS 5 TO 6 MPH IN THE EVENING...BECOMING VARIABLE 2 TO 4 MPH.

* LAL....2.

* CHC OF WETTING RAIN...0 PERCENT.

.TUESDAY...

* SKY/WEATHER...PARTLY CLOUDY. SLIGHT CHANCE OF LIGHT RAIN SHOWERS AND THUNDERSTORMS IN THE AFTERNOON. HAZE.

* MAX TEMPERATURE...80-90.

* MIN HUMIDITY...25-35 PERCENT.

* 20-FOOT WINDS...

VALLEYS/SLOPES.....UPSLOPE/UPVALLEY 2 TO 4 MPH...BECOMING WEST 5 TO 6 MPH IN THE AFTERNOON.

RIDGES.....NORTHEAST WINDS 5 MPH IN THE MORNING...BECOMING VARIABLE 2 TO 4 MPH.

* LAL....1...THEN 2 IN THE AFTERNOON.

* CHC OF WETTING RAIN...10 PERCENT.

.EXTENDED FORECAST FOR DAYS 3 THROUGH 5...

...NORTHWEST CALIFORNIA COAST...

.WEDNESDAY...MOSTLY CLOUDY. PATCHY FOG. LOWS IN THE MID 50S. HIGHS AROUND 70. NORTHWEST WINDS 5 MPH.

.THURSDAY...PARTLY CLOUDY. PATCHY FOG. LOWS IN THE MID 50S. HIGHS IN THE LOWER 70S. NORTH WINDS 5 MPH.

.FRIDAY...PARTLY CLOUDY. PATCHY FOG. LOWS IN THE MID 50S. HIGHS IN THE LOWER 70S. NORTHWEST WINDS 5 MPH.

.SATURDAY...PARTLY CLOUDY. PATCHY FOG. LOWS IN THE MID 50S. HIGHS AROUND 70.

.SUNDAY...MOSTLY CLOUDY. PATCHY FOG. LOWS IN THE MID 50S. HIGHS IN THE LOWER 70S.

...NORTHWEST CALIFORNIA INTERIOR...

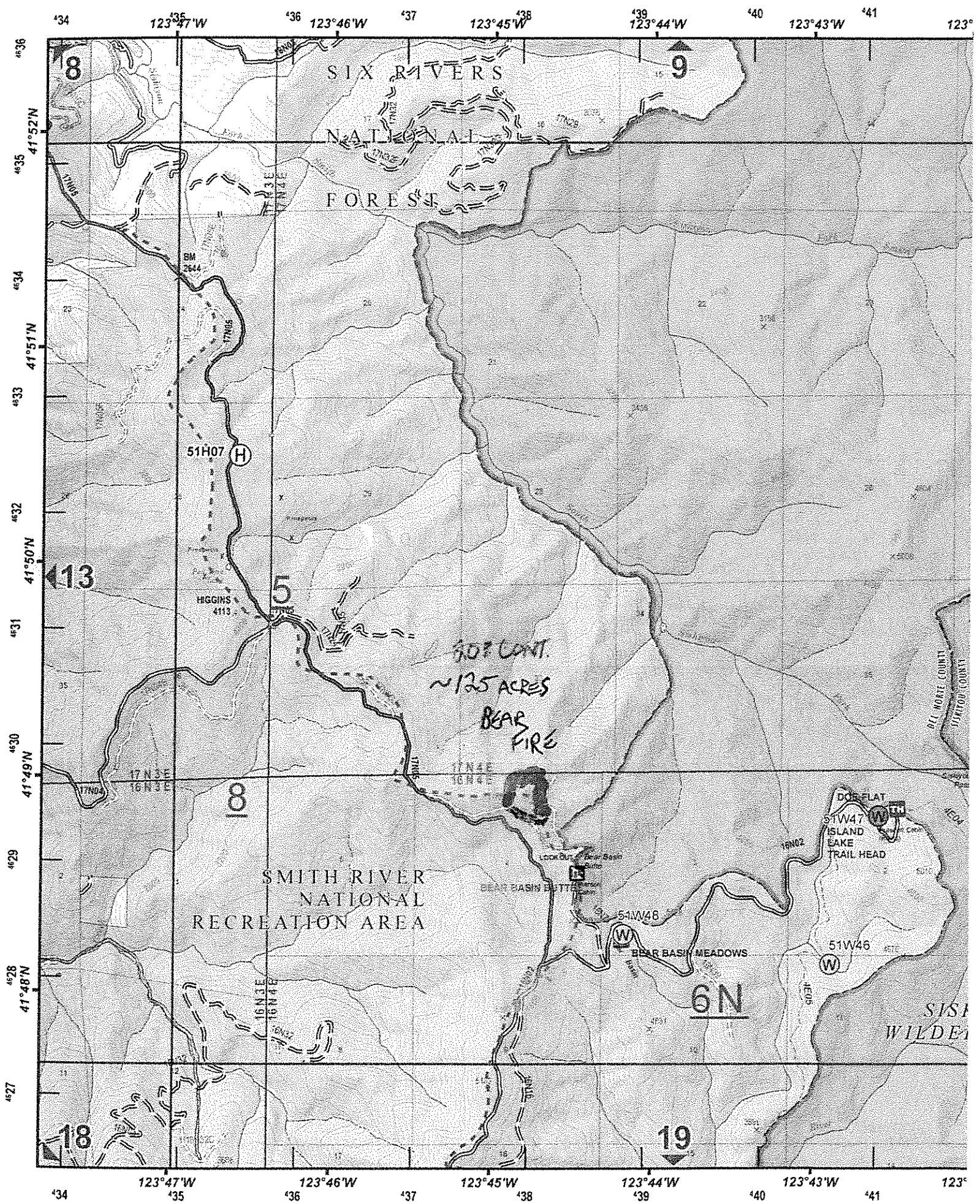
.WEDNESDAY...PARTLY CLOUDY. SLIGHT CHANCE OF SHOWERS AND THUNDERSTORMS. HAZE. LOWS IN THE UPPER 50S. HIGHS IN THE MID 80S. WINDS GENERALLY LESS THAN 5 MPH.

.THURSDAY...MOSTLY CLEAR. HAZE IN THE EVENING. LOWS IN THE UPPER 50S. HIGHS IN THE UPPER 80S. NORTHEAST WINDS 5 MPH.

.FRIDAY...PARTLY CLOUDY WITH SLIGHT CHANCE OF SHOWERS AND THUNDERSTORMS. LOWS IN THE UPPER 50S. HIGHS IN THE MID 80S. EAST WINDS 5 MPH.

.SATURDAY...PARTLY CLOUDY WITH SLIGHT CHANCE OF SHOWERS AND THUNDERSTORMS. LOWS IN THE MID 50S. HIGHS IN THE LOWER 80S.

.SUNDAY...MOSTLY CLEAR. SLIGHT CHANCE OF SHOWERS AND THUNDERSTORMS. LOWS IN THE UPPER 50S. HIGHS IN THE LOWER 80S.

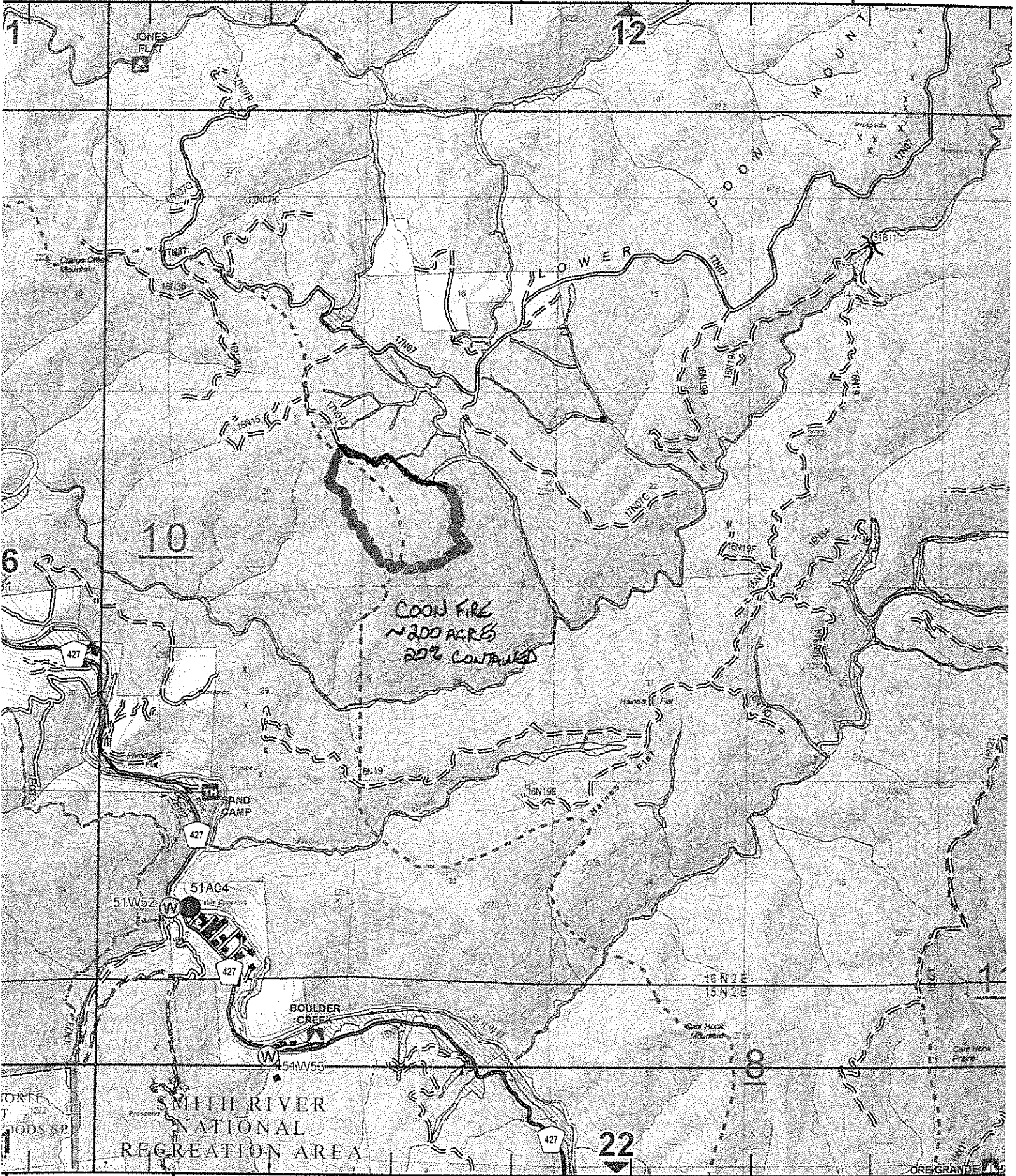


30± CONT.
~125 ACRES
BEAR FIRE

100

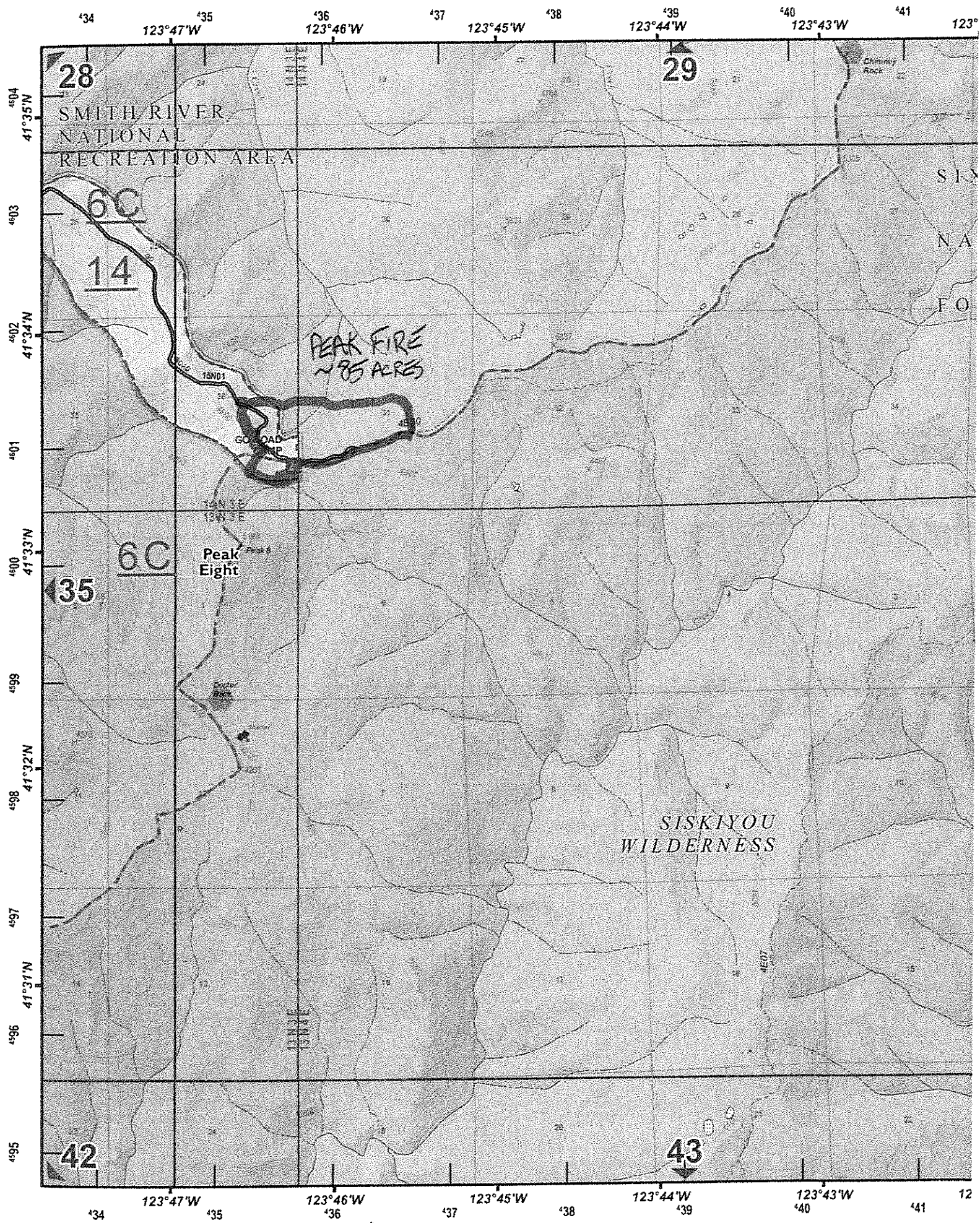
R-100

17 18 19 20 21 22 23 24 25
24°0'W 123°59'W 123°58'W 123°57'W 123°56'W 123°55'W 123



17 18 19 20 21 22 23 24 25
123°59'W 123°58'W 123°57'W 123°56'W 123°55'W 123

Coon



28

29

SMITH RIVER
NATIONAL
RECREATION AREA

SISKIYOU
NATIONAL
FOREST

6C

14

PEAK FIRE
~85 ACRES

GO ROAD
CAMP

Peak Eight

6C

35

SISKIYOU
WILDERNESS

42

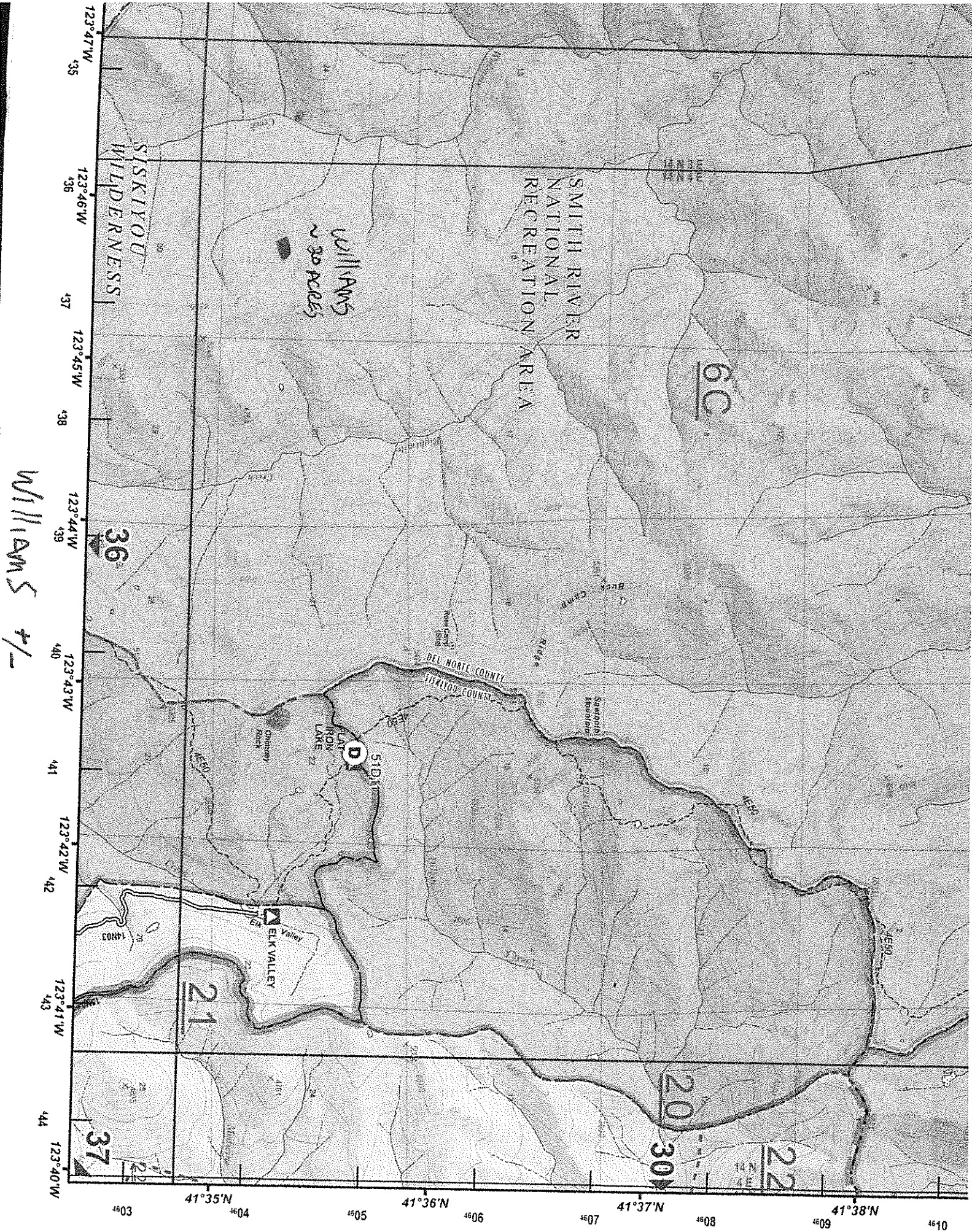
43

PEAK #1

'34 123°47'W '35 123°46'W '36 123°45'W '37 123°44'W '38 123°43'W '39 123°42'W '40 123°41'W '41 123°40'W

4604 41°35'N
4603 41°34'N
4602 41°33'N
4601 41°32'N
4600 41°31'N
4599 41°30'N
4598 41°29'N
4597 41°28'N
4596 41°27'N
4595 41°26'N

'34 123°47'W '35 123°46'W '36 123°45'W '37 123°44'W '38 123°43'W '39 123°42'W '40 123°41'W '41 123°40'W



SISKIYOU
WILDERNESS

SMITH RIVER
NATIONAL
RECREATION AREA

WILLIAMS
~ 30 ACRES

6C

36

WILLIAMS +/-

D

21

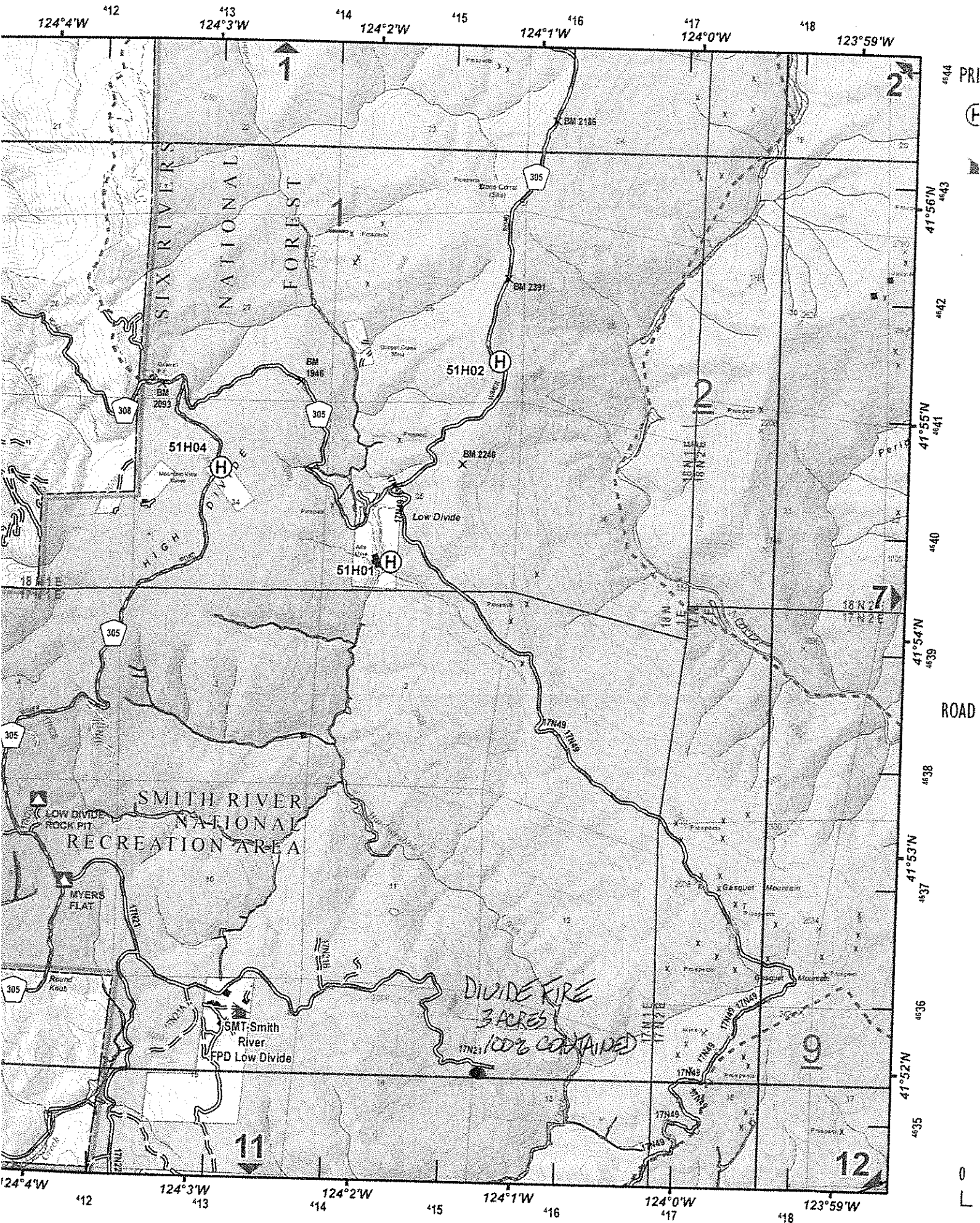
20

22

37

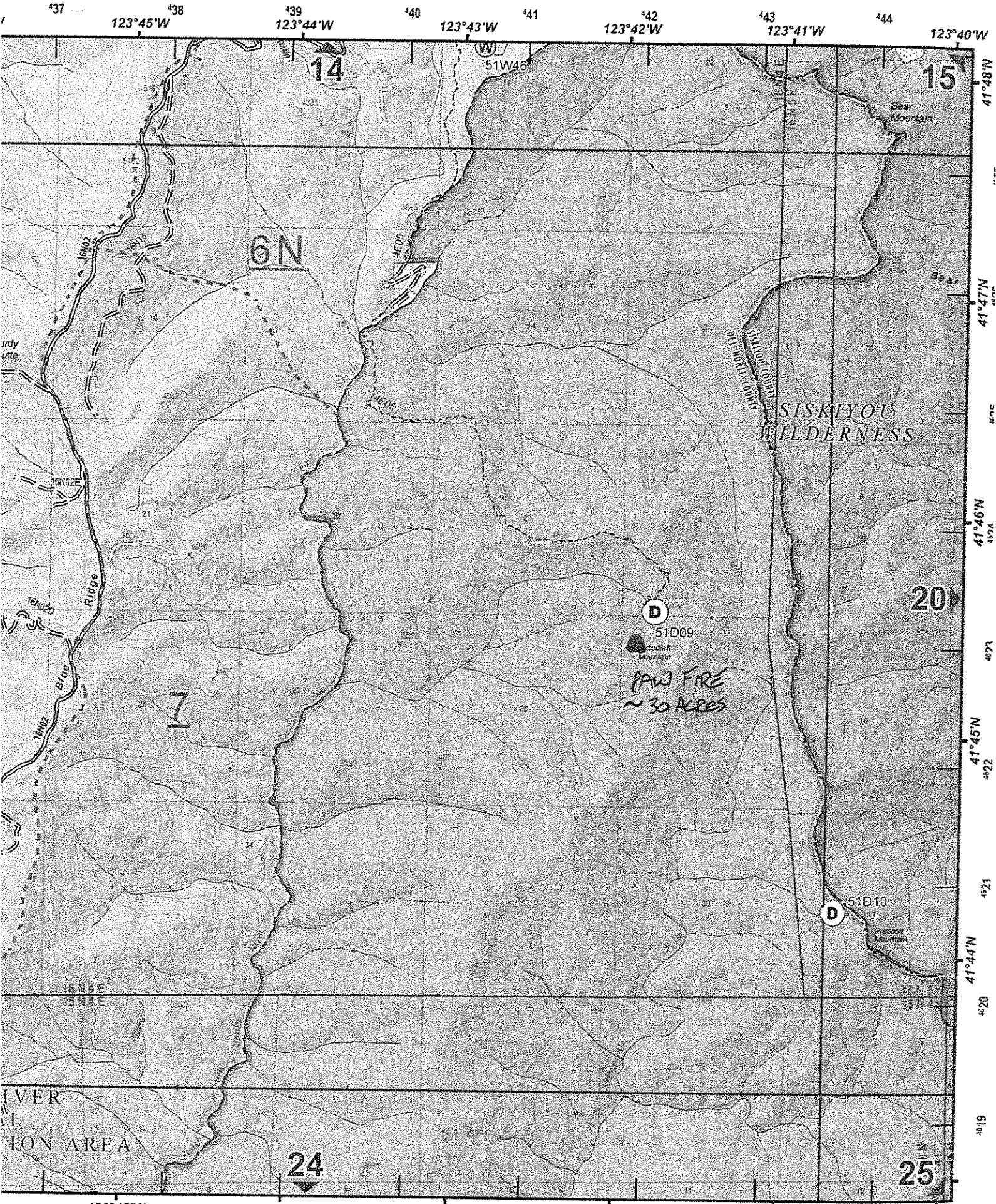
123°47'W 35
123°46'W 36
123°45'W 37
123°44'W 38
123°43'W 39
123°42'W 40
123°41'W 41
123°40'W 42
123°41'W 43
123°40'W 44

4603 41°35'N 4604 4605 41°36'N 4606 4607 41°37'N 4608 41°38'N 4609 4610



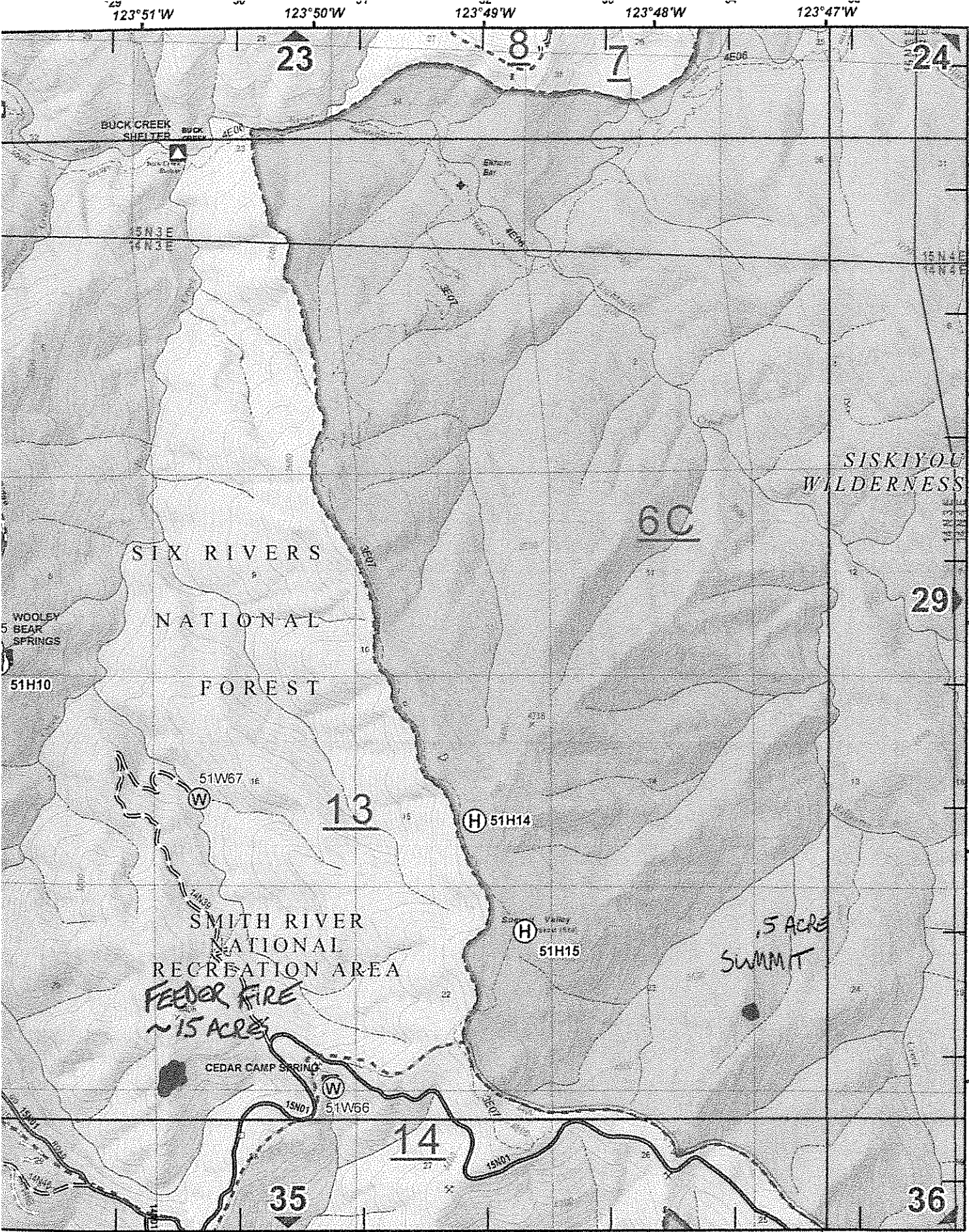
DIVIDE

4144 PRI
4143
4142
4141
4140
4139
4138
4137
4136
4135
0
L



PAW FIRE
~ 30 ACRES

PAW GDF +/-



PREI
 4612
 41°39'N
 4611
 41°38'N
 4609
 41°37'N
 4608
 41°37'N
 4607
 41°36'N
 4606
 41°36'N
 4605
 41°35'N
 4604
 41°35'N
 4603

FEEDER & SUMMIT +/-

