

GASQUET COMPLEX

INCIDENT ACTION PLAN

OPERATIONAL PERIOD

AUG 7 – AUG 8, 2015

0600-0600



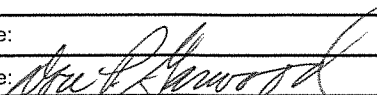
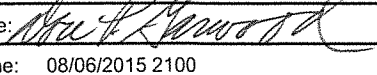
"Adapt...Improvise...and Overcome"



CA-SRF-001488

P5JOPQ (0510)

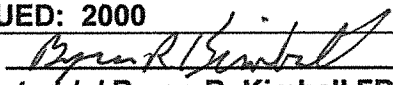
INCIDENT OBJECTIVES (ICS 202)

1. Incident Name:		2. Operational Period: 0600 - 0600	
GASQUET COMPLEX		Date/Time From: 08/07/2015 0600 FRI	Date/Time To: 08/08/2015 0600 SAT
3. Objective(s):			
<p>STRATEGIC FRAMEWORK: THE FRAMEWORK FOR THE GASQUET COMPLEX STRATEGIC PLAN CONSISTS OF USING A COMBINATION OF DIRECT ATTACK WHERE FEASIBLE, OTHERWISE INDIRECT USING NATURAL BARRIERS. A KEY ELEMENT IS FLEXIBILITY AND THE ABILITY TO APPLY THE RIGHT RESOURCE TO THE RIGHT TASK AT THE RIGHT TIME. FIRELINE WIL BE CONTSTRUCTED ONLY WHERE FEASIBLE AND SAFE TO DO SO.</p> <p>LEADERS INTENT: PROVIDE THE HIGHEST LEVEL OF CUSTOMER SERVICES TO ALL INVOLVED WITH OR IMPACTED BY THE GASQUET COMPLEX. ALL INCIDENT PERSONNEL SHOULD BE PREPARED TO TAKE THE APPROPRIATE ACTIONS REGARDING:</p> <ul style="list-style-type: none"> • PERSONAL INTERACTIONS BOTH INSIDE AND OUTSIDE THE INCIDENT MANAGEMENT ORGANIZATION. • PERSONAL SAFETY AND THE SAFETY OF OTHERS. • AN INCIDENT-WITHIN-AN-INCIDENT. <p>OBJECTIVES:</p> <ul style="list-style-type: none"> • PROVIDE FOR FIREFIGHTER AND PUBLIC SAFETY BY ENSURING L C E S IS EVALUATED USING SOUND RISK MANAGMENT PRINCIPLES. • MAINTAIN AND BUILD COOPERATOR AND STAKEHOLDER RELATIONSHIPS. • SUPPRESS FIRES WHILE NOT EXPOSING FIREFIGHTERS OR AIRCRAFT TO UNNECESSARY RISKS. • IDENTIFY AND PROTECT NATIVE AMERICAN TRADITIONAL AREAS AND OTHER SENSITIVE CULTURAL AND HISTORIC SITES. 			
4. Operational Period Command Emphasis:			
UTILIZE SUPPRESSION STRATEGIES COMMENSURATE WITH VALUES AT RISK. IMPLEMENT TACTICS WHICH INCREASE THE PROBABLITIES OF SUCCESS WHILE HOLDING EXISTING CONTAINMENT.			
General Situational Awareness:			
BE HEADS UP WHEN COLD FRONTS COME THROUGH AND KNOW THE LAL FOR THE DAY. (IRPG PG.66) RE-BURN POTENTIAL ON MOST DIVISIONS IS HIGH WHEN IN ALIGNMENT WITH WIND AND TOPOGRAPHY.			
5. Site Safety Plan Required? Yes <input type="checkbox"/> No <input checked="" type="checkbox"/>			
Approved Site Safety Plan(s) Located at:			
6. Incident Action Plan (the items checked below are included in this Incident Action Plan):			
<input checked="" type="checkbox"/> ICS 202	<input type="checkbox"/> ICS 207	Other Attachments:	
<input checked="" type="checkbox"/> ICS 203	<input type="checkbox"/> ICS 208	<input checked="" type="checkbox"/> SAFETY / 215A	
<input checked="" type="checkbox"/> ICS 204	<input checked="" type="checkbox"/> ICS 220	<input checked="" type="checkbox"/> INCIDENT WITHIN AN INCIDENT	
<input checked="" type="checkbox"/> ICS 205	<input checked="" type="checkbox"/> Map/Chart	<input checked="" type="checkbox"/> TRAINING MESSAGE	
<input type="checkbox"/> ICS 205A	<input checked="" type="checkbox"/> Weather Forecast/Tides/Currents	<input checked="" type="checkbox"/> HR MESSAGE	
<input checked="" type="checkbox"/> ICS 206			
7. Prepared by: STEVE ABBOTT		Position/Title: PSC2	
8. Approved by Incident Commander:		Signature: 	
Name: DON GARWOOD		Signature: 	
ICS 202		Date/Time: 08/06/2015 2100	
IAP Page			

ORGANIZATION ASSIGNMENT LIST (ICS 203)

1. Incident Name:		2. Operational Period: 0600 - 0600	
GASQUET COMPLEX		Date/Time From: 08/07/2015 0600 FRI	Date/Time To: 08/08/2015 0600 SAT
3. Incident Commander(s) and Command Staff:		7. Operations Section:	
IC/UC	DON GARWOOD DAVID KELLY	OPS SECTION CHIEF	NICKIE WASHINGTON DARRELL MILLER
DEPUTY	DAN FELIX	PLANNING OPS	MATTHEW CONKLIN AARON THOMPSON (T)
SAFETY OFFICER	JAMES ARAGON; JOHN BATES FRED HERNANDEZ (T)		
INFORMATION OFFICER	JIM WILKINS; ROBERT POOLE ASCENSION BRIBIESCAS	DIVISION/GROUP	A - COON FIRE MITCH FOWLKES DAN O'CONNOR (T)
LIAISON OFFICER	LARRY LA VOGUE 909-855-5756	DIVISION/GROUP	C - COON FIRE TODD MCDIVITT BRIAN BERRY (T)
4. Agency/Organization Representative(s):		DIVISION/GROUP	E - BEAR FIRE KYLE JACOBSON JOHN OWINGS (T)
Agency/Organization	Name	DIVISION/GROUP	H - WILLIAMS FIRE UNSTAFFED
USFS	DAVE PALMER	DIVISION/GROUP	L - PEAK FIRE CANDICE KUTROSKY PAUL MANDOLINI (T)
GASQUET VFD	NICK KARANOPOULOS	DIVISION/GROUP	N - PEAK FIRE PETE VILLA DAVID WOODY (T)
CAL EMA	JOHN SALVATE	DIVISION/GROUP	V - SUMMIT UNSTAFFED
CAL TRANS		DIVISION/GROUP	W - FEEDER FIRE GLENN WEBB AL WARD (T)
CHP - DEL NORTE		DIVISION/GROUP	Z - FEEDER FIRE ADAM KOHLEY ROBERT ALLAN (T)
DEL NORTE CO ROAD			
5. Planning Section:		7b. Air Operations Branch:	
CHIEF	STEVEN ABBOTT	AIR OPS BRANCH DIRECTOR	TED VISSER
DEPUTY	DAVID LATTIMORE	AIR SUPPORT SUPERVISOR	GALEN YOUNG
RESOURCES UNIT	BILL KERSHAW; KYLE HAUDUCOEUR NANCY MASTERS; JOE SCURI (T)	AIR ATTACK SUPERVISOR	RON SERABIA
SITUATION UNIT	KEN VAN WIG; GORDON TAMPLIN(T)	AIR TANKER COORDINATOR	
DOCUMENTATION	VANESSA HANSON	HELICOPTER COORDINATOR	
DEMOB UNIT	TIM KNORR		
FIRE BEHAVIOR	BYRON KIMBALL		
HUMAN RESOURCE	KATHLEEN KREYNS		
TRAINING SPECIALIST	ANN HUTCHINSON		
GIS SPECIALIST	R MURILLO; D HUTCHINSON; A SALDIVAR(T)		
COMPUTER SPECIALIST	CHARLES VERTREES		
6. Logistics Section:		8. Finance/Administration Section:	
CHIEF	ERIC SWEETMAN	CHIEF	DEBBIE YORK
DEPUTY		DEPUTY	
SUPPLY UNIT	EVAN TISS; DAVID WHITNEY	TIME UNIT	SHARON R MAKOSKY DEANNA THOMPSON (T)
FACILITIES UNIT	STEVEN KING; A CURLEY; D WINN(T)	PROCUREMENT UNIT	JAISY SCOTT (T)
GROUND SUPT UNIT	CHRIS HALEY; RON NOORDMAN	COMPENSATION UNIT	
COMM UNIT	DAVE LARKIN; CHRIS PERRY(T)	COST UNIT	THOMAS STEELE KRIS STERBENS (T)
MEDICAL UNIT	GENA FOWLKES		
SECURITY UNIT	PAUL KAIN		
FOOD UNIT	RICHARD WAITE		
9. Prepared By:	Name: KYLE HAUDUCOEUR	Position/Title: RESL	Signature:
ICS 203	IAP Page	Date/Time: 08/06/2015 1200	

FIRE BEHAVIOR FORECAST

FORECAST NUMBER: #4	TYPE OF FIRE: Wildland Fire
FIRE NAME: Gasquet Complex	OPERATIONAL PERIOD: August 07, 2015
DATE ISSUED: August 06, 2015	TIME ISSUED: 2000
UNIT: Smith River NRA, Six Rivers NF	SIGNED: 
Typed/printed:/s/ Byron R. Kimball FBAN	

INPUTS

WEATHER SUMMARY: LOW PRESSURE MOVING TO THE EAST ACROSS CENTRAL CALIFORNIA WILL MAINTAIN EASTERLY FLOW OVER THE GASQUET COMPLEX INTO FRIDAY. RECOVERIES OVERNIGHT WILL BE MODEST DUE TO THE OFFSHORE FLOW.

MAX TEMPERATURE.....73-81.
MIN HUMIDITY.....33-40 PERCENT.
EYE LEVEL WINDS.....EAST WINDS 7 MPH WITH GUSTS TO 11 MPH BECOMING NORTH IN THE AFTERNOON.

For more specific information, please see the Spot Weather forecast

OUTPUTS

FIRE BEHAVIOR

GENERAL:

Lower temps and increasing RH will lead to less fire activity this burning period. West and South edges present some concerns due to the winds. Have now had continuous presence of fire in timber fuels for 4+ days. STAY AWARE. Continue to monitor for spots and rollout.

SPECIFIC:

Timber Understory: Fire behavior in the Understory models should decrease. ROS and Flame Length will be more modest and have a reduced intensity.

ROS: 5 to 10 ch/hr.

FL: 6 to 8 ft.

Timber Litter: Timber Litter fire behavior is also decreasing. Dirty burns and incomplete consumption could lead to less distinct fire edges.

ROS: 3 to 6 ch/hr.

FL: 2 to 3 ft.

Rollout of heavier fuels continues to present a concern as the fires work into the drainages. Be prepared for a slope reversal run if fire establishes with sufficient heat.

AIR OPERATIONS:

Marine Layer comes back into play as the Low Pressure pulls moist air into the fire area. Clearing by late morning back to the coast.

SAFETY

Be heads up for unstable trees and snags due to instability in the root structures from the consumption of securing material. Increased wind may be just enough to knock over.

Spot Forecast for Gasquet Complex Fire
National Weather Service Eureka
422 PM PDT Thu Aug 6 2015

IF CONDITIONS BECOME UNREPRESENTATIVE,
CONTACT THE NATIONAL WEATHER SERVICE.
SPOT FORECAST FOR GASQUET COMPLEX...USFS
NATIONAL WEATHER SERVICE EUREKA CA
422 PM PDT THU AUG 6 2015

FORECAST IS BASED ON REQUEST TIME OF 1550 PDT ON AUGUST 06.
IF CONDITIONS BECOME UNREPRESENTATIVE...CONTACT THE NATIONAL WEATHER
SERVICE.

DISCUSSION...LOW PRESSURE MOVING TO THE EAST ACROSS CENTRAL CALIFORNIA WILL MAINTAIN EASTERLY FLOW OVER THE GASQUET COMPLEX INTO FRIDAY. RECOVERIES OVERNIGHT WILL BE MODEST DUE TO THE OFFSHORE FLOW...BUT WILL BENEFIT FROM A DEEPER MARINE LAYER AROUND THIS LOW. IN THE WAKE OF THE LOW...ONSHORE FLOW WILL BRING A SLIGHT COOLING TREND WITH A MORE PRONOUNCED INCREASE IN RECOVERIES. THUNDERSTORMS ARE FORECAST TO REMAIN WELL EAST OF THE COMPLEX FRIDAY.

FRIDAY...

SKY/WEATHER.....PARTLY CLOUDY.
MAX TEMPERATURE.....73-81.
MIN HUMIDITY.....33-40 PERCENT.
EYE LEVEL WINDS.....EAST WINDS 7 MPH WITH GUSTS TO 11 MPH BECOMING
NORTH IN THE AFTERNOON.
SURROUNDING RIDGE...EAST WINDS 10 MPH WITH GUSTS TO 20 MPH BECOMING
NORTH IN THE AFTERNOON.
MIXING HEIGHT.....500 FT AGL INCREASING TO 3400 FT AGL LATE IN
THE MORNING...THEN DECREASING TO 300 FT AGL
LATE IN THE AFTERNOON.
MIXING WINDS.....NORTHEAST 15 MPH.
WIND (20 FT).....EAST WINDS 7 TO 11 MPH WITH GUSTS UP TO 20
MPH THEN BECOMING NORTH 8 MPH WITH GUSTS TO 14
MPH IN THE AFTERNOON.
LAL.....1.
CWR.....0 PERCENT.

FRIDAY NIGHT...

SKY/WEATHER.....PARTLY CLOUDY.
MIN TEMPERATURE.....53-61.
MAX HUMIDITY.....85-95 PERCENT.
EYE LEVEL WINDS.....NORTH WINDS BECOMING EAST 8 MPH WITH GUSTS TO 15
MPH OVERNIGHT.
SURROUNDING RIDGE...NORTH WINDS BECOMING EAST 12 MPH WITH GUSTS TO 25
MPH OVERNIGHT.
MIXING HEIGHT.....300 FT AGL.
MIXING WINDS.....NORTH 15 MPH.
WIND (20 FT).....NORTH WINDS BECOMING EAST 10 MPH WITH GUSTS TO 20
MPH OVERNIGHT.
LAL.....1.
CWR.....0 PERCENT.

Division/Group Assignment List (ICS 204 WF)

1. Incident Name:			3.			
GASQUET COMPLEX			Branch:		Division/Group: A - COON FIRE	
2. Operational Period: 0600 - 0600						
Date/Time From: 08/07/2015 0600 FRI		Date/Time To: 08/08/2015 0600 SAT				
4. Operations Personnel						
OPERATIONS CHIEF		NICKIE WASHINGTON DARRELL MILLER		DIVISION/GROUP SUPERVISOR		MITCH FOWLKES DAN O'CONNOR (T)
PLANNING OPS		MATT CONKLIN AARON THOMPSON (T)		AIR ATTACK SUPERVISOR		RON SERABIA
5. Resources Assigned this Period						
Strike Team / Task Force / Resource Designator		LWD	Leader	Number Persons	Drop Off PT./Time	Pick Up PT./Time
TFLD JEREMIAH PHILLIPS O-75		08/20		1	ICP/0630	ICP/1900
TFLD DARIN KEYSE (T) O-78		08/20		1	ICP/0630	ICP/1900
6. Control Operations/Work Assignments:						
<ul style="list-style-type: none"> • SCOUT FOR OPPORTUNITIES TO REACH CONTAINMENT OBJECTIVES. • UTILIZE AND SHARE RESOURCES WITH DIVISION C AS NEEDED. 						
7. Special Instructions:						
<ul style="list-style-type: none"> • COORDINATE AND ORDER AIRCRAFT FOR RETARDANT NEEDS WITH AIR ATTACK. • GATHER INTEL ON FIRE PERIMETER AND SIZE. 						
8. Division/Group Communication Summary						
Function	Channel	RX Frequency N/W	RX Tone/NAC	TX Frequency N/W	TX Tone/NAC	Mode
COMMAND	1	167.1000	162.2	169.7500	162.2	A
TACTICAL	13	167.1125	162.2	167.1125	162.2	A
BACKUP NET	4	168.1250		170.4750	127.3	A
AIR TO GROUND	10	165.3875		165.3875		A
9. Prepared By (Resource Unit Leader)			Approved By (Planning Section Chief)		Date	Time
NANCY MASTERS			STEVE ABBOTT		08/06/2015	2100

Division/Group Assignment List (ICS 204 WF)

1. Incident Name:			3.			
GASQUET COMPLEX			Branch:		Division/Group:	
2. Operational Period: 0600 - 0600						
Date/Time From: 08/07/2015 0600 FRI		Date/Time To: 08/08/2015 0600 SAT		C - COON FIRE		
4. Operations Personnel						
OPERATIONS CHIEF		NICKIE WASHINGTON DARRELL MILLER		DIVISION/GROUP SUPERVISOR		TODD MCDIVITT BRIAN BERRY (T)
PLANNING OPS		MATT CONKLIN AARON THOMPSON (T)		AIR ATTACK SUPERVISOR		RON SERABIA
5. Resources Assigned this Period						
Strike Team / Task Force / Resource Designator		LWD	Leader	Number Persons	Drop Off PT./Time	Pick Up PT./Time
TFLD ALEX VIKTORA O-80		08/18		1	ICP/0630	ICP/1900
TFLD DUSTIN WHEELER (T) O-106		08/20		1	ICP/0630	ICP/1900
ENG3 LKP 5031 E-75		08/14	RICK BERGEN	3	ICP/0630	ICP/1900
ENG3 SRM 331 E-76		08/14	MIKE AVERY	4	ICP/0630	ICP/1900
ENG3 CRK 379 E-77		08/14	JOHN ANGELL	4	ICP/0630	ICP/1900
ENG3 SANTA CLARA VFD 33 E-29		08/19	TYREL HANSEN	4	ICP/0630	ICP/1900
ENG6 ALBANY 2180 E-79		08/14	TIM SMYSER	3	ICP/0630	ICP/1900
WTT2 WOOD'S 99 E-87		08/15	STEVE WENDT	2	ICP/0630	ICP/1900
WTS2 ALL AGENCY E-38		08/18	HILL JOHN	1	ICP/0630	ICP/1900
WTS2 SIERRA TIMBER E-42		08/19	DOUG LINGEN	1	ICP/0630	ICP/1900
HEQB RICH WATERS O-85		08/18		1	ICP/0630	ICP/1900
DOZ2 WARNER E-43		08/18	DAN WARNER	3	ICP/0630	ICP/1900
SOFR DOUG BERG (T) O-146		08/17		1	ICP/0630	ICP/1900
6. Control Operations/Work Assignments:						
<ul style="list-style-type: none"> IMPROVE THE 17N07G ROAD AND IDENTIFY SAFETY ZONES. COMPLETE SAFETY ZONE AT DP 20. SCOUT FOR OPPORTUNITIES TO REACH CONTAINMENT OBJECTIVES. UTILIZE AND SHARE RESOURCES WITH DIVISION A AS NEEDED. 						
7. Special Instructions:						
<ul style="list-style-type: none"> COORDINATE AND ORDER AIRCRAFT FOR RETARDANT NEEDS WITH AIR ATTACK. GATHER INTEL ON FIRE PERIMETER AND SIZE. 						
8. Division/Group Communication Summary						
Function	Channel	RX Frequency N/W	RX Tone/NAC	TX Frequency N/W	TX Tone/NAC	Mode
COMMAND	1	167.1000	162.2	169.7500	162.2	A
TACTICAL	5	166.7250	162.2	166.7250	162.2	A
BACKUP NET	4	168.1250		170.4750	127.3	A
AIR TO GROUND	10	165.3875		165.3875		A
9. Prepared By (Resource Unit Leader)			Approved By (Planning Section Chief)		Date	Time
NANCY MASTERS			STEVE ABBOTT		08/06/2015	2100

Division/Group Assignment List (ICS 204 WF)

1. Incident Name:			3.			
GASQUET COMPLEX			Branch:		Division/Group:	
2. Operational Period: 0600 - 0600						
Date/Time From: 08/07/2015 0600 FRI		Date/Time To: 08/08/2015 0600 SAT		E - BEAR FIRE		
4. Operations Personnel						
OPERATIONS CHIEF		NICKIE WASHINGTON DARRELL MILLER		DIVISION/GROUP SUPERVISOR		KYLE JACOBSON JOHN OWINGS (T)
PLANNING OPS		MATT CONKLIN AARON THOMPSON (T)		AIR ATTACK SUPERVISOR		RON SERABIA
5. Resources Assigned this Period						
Strike Team / Task Force / Resource Designator		LWD	Leader	Number Persons	Drop Off PT./Time	Pick Up PT./Time
ENG3 ARCHER MTN 13 E-28		08/19	JUSTUS BARTON	3	ICP/0630	ICP/1900
ENG3 UTAH COUNTY 2 E-31		08/19	ANDREW M WATSON	4	ICP/0630	ICP/1900
ENG3 PICTURE ROCK 121 E-26		08/20	ROCKY ORTIZ	4	ICP/0630	ICP/1900
ENG6 NV-WID 2616 E-35		08/19	CHAD M NIBLETT	3	ICP/0630	ICP/1900
ENG6 WEBER FIRE 661 E-33		08/19	SCOTT HANEY	3	ICP/0630	ICP/1900
ENG6 GREAT BASIN 311 E-34		08/19	TYLER ERSKINE	3	ICP/0630	ICP/1900
WTS2 YREKA OUTLANDS E-19		08/18	ALLEN WILLIAMS	2	ICP/0630	ICP/1900
6. Control Operations/Work Assignments:						
<ul style="list-style-type: none"> CONTINUE TO HOLD AND IMPROVE LINE ALONG THE 17N03 ROAD. ACCESS NORTHERN FLANK OF FIRE AND ESTABLISH ANCHOR POINT. SCOUT FOR OPPORTUNITIES TO REACH CONTAINMENT OBJECTIVES. 						
7. Special Instructions:						
<ul style="list-style-type: none"> COORDINATE AND ORDER AIRCRAFT FOR RETARDANT NEEDS WITH AIR ATTACK. GATHER INTEL ON FIRE PERIMETER AND SIZE. 						
8. Division/Group Communication Summary						
Function	Channel	RX Frequency N/W	RX Tone/NAC	TX Frequency N/W	TX Tone/NAC	Mode
COMMAND	1	167.1000	162.2	169.7500	162.2	A
TACTICAL	6	166.7750	162.2	166.7750	162.2	A
BACKUP NET	4	168.1250		170.4750	127.3	A
AIR TO GROUND	10	165.3875		165.3875		A
9. Prepared By (Resource Unit Leader)			Approved By (Planning Section Chief)		Date	Time
NANCY MASTERS			STEVE ABBOTT		08/06/2015	2100

Division/Group Assignment List (ICS 204 WF)

1. Incident Name:			3.			
GASQUET COMPLEX			Branch:		Division/Group: H - WILLIAMS FIRE	
2. Operational Period: 0600 - 0600						
Date/Time From: 08/07/2015 0600 FRI		Date/Time To: 08/08/2015 0600 SAT				
4. Operations Personnel						
OPERATIONS CHIEF		NICKIE WASHINGTON DARRELL MILLER		DIVISION/GROUP SUPERVISOR		UNSTAFFED
PLANNING OPS		MATT CONKLIN AARON THOMPSON (T)		AIR ATTACK SUPERVISOR		RON SERABIA
5. Resources Assigned this Period						
Strike Team / Task Force / Resource Designator		LWD	Leader	Number Persons	Drop Off PT./Time	Pick Up PT./Time
6. Control Operations/Work Assignments:						
7. Special Instructions:						
• DIVISION L PERSONNEL USE AIRCRAFT TO MONITOR WILLIAMS FIRE.						
8. Division/Group Communication Summary						
Function	Channel	RX Frequency N/W	RX Tone/NAC	TX Frequency N/W	TX Tone/NAC	Mode
COMMAND	1	167.1000	162.2	169.7500	162.2	A
TACTICAL	5	166.7250	162.2	166.7250	162.2	A
BACKUP NET	4	168.1250		170.4750	127.3	A
AIR TO GROUND	10	165.3875		165.3875		A
9. Prepared By (Resource Unit Leader)			Approved By (Planning Section Chief)		Date	Time
KYLE HAUDUCOEUR			STEVE ABBOTT		08/06/2015	2100

Division/Group Assignment List (ICS 204 WF)

1. Incident Name:			3.			
GASQUET COMPLEX			Branch:		Division/Group:	
2. Operational Period: 0600 - 0600						
Date/Time From: 08/07/2015 0600 FRI		Date/Time To: 08/08/2015 0600 SAT		L - PEAK FIRE		
4. Operations Personnel						
OPERATIONS CHIEF		NICKIE WASHINGTON DARRELL MILLER		DIVISION/GROUP SUPERVISOR		CANDICE KUTROSKY PAUL MANDOLINI (T)
PLANNING OPS		MATT CONKLIN AARON THOMPSON (T)		AIR ATTACK SUPERVISOR		RON SERABIA
5. Resources Assigned this Period						
Strike Team / Task Force / Resource Designator	LWD	Leader	Number Persons	Drop Off PT./Time	Pick Up PT./Time	
HC2I WHITE MOUNTAIN #1 C-3	08/19	KEITH SARGENT	1	ICP/0630	ICP/1900	
HC2I GRAYBACK 8B C-5	08/12	TIM NYGREN	20	ICP/0630	ICP/1900	
TFLD GREGORY COX O-74	08/18		1	ICP/0630	ICP/1900	
TFLD DALE NEWBY (T) O-73	08/18		1	ICP/0630	ICP/1900	
ENG3 TRI CITY 106 E-25	08/19	ANTHONY GRAINGER	4	ICP/0630	ICP/1900	
ENG6 SANTA CLARA 32 E-37	08/19	GABE RUNOLFSON	2	ICP/0630	ICP/1900	
ENG3 MONTANA FIRE 341 E-30	08/20	MIKE WARREN	3	ICP/0630	ICP/1900	
WTS2 BOWNE WATER SERVICE E-40	08/17	MICHAEL BOONE	1	ICP/0630	ICP/1900	
FAL1 NORTH ZONE FALLERS #1 O-94	08/18	ALAN STEWART	2	ICP/0630	ICP/1900	
FAL1 NORTH ZONE FALLERS #2 O-95	08/18	BILLY BELMONT	2	ICP/0630	ICP/1900	
FAL1 NORTH ZONE FALLERS #4 O-97	08/18	BILL MEADOWS	2	ICP/0630	ICP/1900	
6. Control Operations/Work Assignments:						
<ul style="list-style-type: none"> • ANCHOR FIRELINE FROM G-O ROAD / BOUNDARY TRAIL. • SECURE ALL FIRE SOUTH OF BOUNDARY TRAIL. • SCOUT FOR OPPORTUNITIES TO REACH CONTAINMENT OBJECTIVES. • UTILIZE AND SHARE RESOURCES WITH DIVISION N AS NEEDED. 						
7. Special Instructions:						
<ul style="list-style-type: none"> • COORDINATE AND ORDER AIRCRAFT FOR RETARDANT NEEDS WITH AIR ATTACK. • GATHER INTEL ON FIRE PERIMETER AND SIZE. • USE AIRCRAFT TO MONITOR DIVISION H - WILLIAMS FIRE 						
8. Division/Group Communication Summary						
Function	Channel	RX Frequency N/W	RX Tone/NAC	TX Frequency N/W	TX Tone/NAC	Mode
COMMAND	1	167.1000	162.2	169.7500	162.2	A
TACTICAL	8	168.0500	162.2	168.0500	162.2	A
BACKUP NET	4	168.1250		170.4750	127.3	A
AIR TO GROUND	10	165.3875		165.3875		A
9. Prepared By (Resource Unit Leader)			Approved By (Planning Section Chief)		Date	Time
NANCY MASTERS			STEVE ABBOTT		08/06/2015	2100

Division/Group Assignment List (ICS 204 WF)

1. Incident Name:			3.			
GASQUET COMPLEX			Branch:		Division/Group:	
2. Operational Period: 0600 - 0600					N - PEAK FIRE	
Date/Time From: 08/07/2015 0600 FRI			Date/Time To: 08/08/2015 0600 SAT			
4. Operations Personnel						
OPERATIONS CHIEF		NICKIE WASHINGTON DARRELL MILLER		DIVISION/GROUP SUPERVISOR		PETE VILLA DAVID WOODY (T)
PLANNING OPS		MATT CONKLIN AARON THOMPSON (T)		AIR ATTACK SUPERVISOR		RON SERABIA
5. Resources Assigned this Period						
Strike Team / Task Force / Resource Designator		LWD	Leader	Number Persons	Drop Off PT./Time	Pick Up PT./Time
ENG3 LONE PEAK 1667 E-27		08/19	C W STEWART	7	ICP/0630	ICP/1900
ENG6 GRAND COUNTY 6802 E-36		08/19	MARK MARCUM	2	ICP/0630	ICP/1900
6. Control Operations/Work Assignments:						
<ul style="list-style-type: none"> • SCOUT FOR OPPORTUNITIES TO REACH CONTAINMENT OBJECTIVES. • UTILIZE AND SHARE RESOURCES WITH DIVISION L AS NEEDED. • HOLD & IMPROVE FIRELINE FROM DP40 WEST ALONG THE G-O ROAD. • SCOUT DIVISION V - SUMMIT FIRE FOR OPPORTUNITIES TO EFFECT CONTAINMENT. 						
7. Special Instructions:						
<ul style="list-style-type: none"> • COORDINATE AND ORDER AIRCRAFT FOR RETARDANT NEEDS WITH AIR ATTACK. • GATHER INTEL ON FIRE PERIMETER AND SIZE. • USE AIRCRAFT TO MONITOR DIVISION V - SUMMIT FIRE. 						
8. Division/Group Communication Summary						
Function	Channel	RX Frequency N/W	RX Tone/NAC	TX Frequency N/W	TX Tone/NAC	Mode
COMMAND	1	167.1000	162.2	169.7500	162.2	A
TACTICAL	14	168.2375	162.2	168.2375	162.2	A
BACKUP NET	4	168.1250		170.4750	127.3	A
AIR TO GROUND	10	165.3875		165.3875		A
9. Prepared By (Resource Unit Leader)			Approved By (Planning Section Chief)		Date	Time
KYLE HAUDUCOEUR			STEVE ABBOTT		08/06/2015	2100

Division/Group Assignment List (ICS 204 WF)

1. Incident Name:			3.			
GASQUET COMPLEX			Branch:		Division/Group:	
2. Operational Period: 0600 - 0600			V - SUMMIT FIRE			
Date/Time From: 08/07/2015 0600 FRI		Date/Time To: 08/08/2015 0600 SAT				
4. Operations Personnel						
OPERATIONS CHIEF		NICKIE WASHINGTON DARRELL MILLER		DIVISION/GROUP SUPERVISOR		UNSTAFFED
PLANNING OPS		MATT CONKLIN AARON THOMPSON (T)		AIR ATTACK SUPERVISOR		RON SERABIA
5. Resources Assigned this Period						
Strike Team / Task Force / Resource Designator	LWD	Leader	Number Persons	Drop Off PT./Time	Pick Up PT./Time	
6. Control Operations/Work Assignments:						
7. Special Instructions:						
• MONITOR FROM DIVISION N BY AIR.						
8. Division/Group Communication Summary						
Function	Channel	RX Frequency N/W	RX Tone/NAC	TX Frequency N/W	TX Tone/NAC	Mode
COMMAND	1	167.1000	162.2	169.7500	162.2	A
TACTICAL	6	166.7750	162.2	166.7750	162.2	A
BACKUP NET	4	168.1250		170.4750	127.3	A
AIR TO GROUND	10	165.3875		165.3875		A
9. Prepared By (Resource Unit Leader)			Approved By (Planning Section Chief)		Date	Time
KYLE HAUDUCOEUR			STEVE ABBOTT		08/06/2015	2100

Division/Group Assignment List (ICS 204 WF)

1. Incident Name:			3.			
GASQUET COMPLEX			Branch:		Division/Group:	
2. Operational Period: 0600 - 0600					W - FEEDER FIRE	
Date/Time From: 08/07/2015 0600 FRI	Date/Time To: 08/08/2015 0600 SAT					
4. Operations Personnel						
OPERATIONS CHIEF		NICKIE WASHINGTON DARRELL MILLER		DIVISION/GROUP SUPERVISOR		
				GLENN WEBB AL WARD (T)		
PLANNING OPS		MATT CONKLIN AARON THOMPSON (T)		AIR ATTACK SUPERVISOR		
				RON SERABIA		
5. Resources Assigned this Period						
Strike Team / Task Force / Resource Designator		LWD	Leader	Number Persons	Drop Off PT./Time	Pick Up PT./Time
TFLD CHAD HYATT O-144		08/16		1	ICP/0630	ICP/1900
ENG3 GASQUET 214 E-78		08/14	DAVID WOODS	4	ICP/0630	ICP/1900
ENG4 WEBER FIRE DISTRICT 464 E-80		08/14	BARRY LOCKE	4	ICP/0630	ICP/1900
ENG6 AMERICAN FIRE CO 61 E-86		08/14	MATT MORRELL	3	ICP/0630	ICP/1900
ENG6 AMERICAN FIRE CO 62 E-85		08/14	MANI MORRELL	3	ICP/0630	ICP/1900
ENG6 TONTO 1247 E-82		08/16	SHAWN O'CONNELL	7	ICP/0630	ICP/1900
FAL1 NORTH ZONE FALLERS #3 O-96		08/18	RICK MEE	2	ICP/0630	ICP/1900
WTT2 GASQUET VFD E-88		08/15	SALENA COX	2	ICP/0630	ICP/1900
WTT2 SRF WT15 E-45		08/15	JACOB MC ADAMS	2	ICP/0630	ICP/1900
WTS2 49ER E-41		08/17	BOB ALVAREZ	1	ICP/0630	ICP/1900
6. Control Operations/Work Assignments:						
<ul style="list-style-type: none"> SECURE AND HOLD BURNOUT OPERATION ALONG 14N39A ROAD. CONTINUE LINE CONSTRUCTION. SCOUT FOR OPPORTUNITIES TO REACH CONTAINMENT OBJECTIVES. 						
7. Special Instructions:						
<ul style="list-style-type: none"> COORDINATE AND ORDER AIRCRAFT FOR RETARDANT NEEDS WITH AIR ATTACK. GATHER INTEL ON FIRE PERIMETER AND SIZE. 						
8. Division/Group Communication Summary						
Function	Channel	RX Frequency N/W	RX Tone/NAC	TX Frequency N/W	TX Tone/NAC	Mode
COMMAND	1	167.1000	162.2	169.7500	162.2	A
TACTICAL	12	166.5500	162.2	166.5500	162.2	A
BACKUP NET	4	168.1250		170.4750	127.3	A
AIR TO GROUND	10	165.3875		165.3875		A
9. Prepared By (Resource Unit Leader)		Approved By (Planning Section Chief)		Date	Time	
NANCY MASTERS		STEVE ABBOTT		08/06/2015	2100	

Division/Group Assignment List (ICS 204 WF)

1. Incident Name:		3.				
GASQUET COMPLEX		Branch:	Division/Group:			
2. Operational Period: 0600 - 0600			Z - FEEDER FIRE			
Date/Time From: 08/07/2015 0600 FRI	Date/Time To: 08/08/2015 0600 SAT					
4. Operations Personnel						
OPERATIONS CHIEF	NICKIE WASHINGTON DARRELL MILLER	DIVISION/GROUP SUPERVISOR	ADAM KOHLEY ROBERT ALLAN (T)			
PLANNING OPS	MATT CONKLIN AARON THOMPSON (T)	AIR ATTACK SUPERVISOR	RON SERABIA			
5. Resources Assigned this Period						
Strike Team / Task Force / Resource Designator	LWD	Leader	Number Persons	Drop Off PT./Time	Pick Up PT./Time	
HC2I NHS#1 C-4	08/18	JOHN ROSS	20	ICP/0630	ICP/1900	
TFLD CATHLEEN LOWE O-76	08/19		1	ICP/0630	ICP/1900	
6. Control Operations/Work Assignments:						
<ul style="list-style-type: none"> • SCOUT FOR OPPORTUNITIES TO REACH CONTAINMENT OBJECTIVES. • IMPROVE ANCHOR POINTS. • CONTINUE LINE CONSTRUCTION. 						
7. Special Instructions:						
<ul style="list-style-type: none"> • COORDINATE AND ORDER AIRCRAFT FOR RETARDANT NEEDS WITH AIR ATTACK. • GATHER INTEL ON FIRE PERIMETER AND SIZE. 						
8. Division/Group Communication Summary						
Function	Channel	RX Frequency N/W	RX Tone/NAC	TX Frequency N/W	TX Tone/NAC	Mode
COMMAND	1	167.1000	162.2	169.7500	162.2	A
TACTICAL	9	168.6000	162.2	168.6000	162.2	A
BACKUP NET	4	168.1250		170.4750	127.3	A
AIR TO GROUND	10	165.3875		165.3875		A
9. Prepared By (Resource Unit Leader)		Approved By (Planning Section Chief)		Date	Time	
NANCY MASTERS		STEVE ABBOTT		08/06/2015	2100	

INCIDENT RADIO COMMUNICATIONS PLAN (ICS 205)

1. Incident Name:		2. Date/Time Prepared:		3. Operational Period:	
GASQUET COMPLEX		Date: 08/06/2015	Time: 2:100	Date/Time From: 08/07/2015 0600	Date/Time To: 08/08/2015 0600
				FRI	SAT

4. Basic Radio Channel Use:										
Zone Group	Ch #	Function	Channel Name/Trunked Radio System Talkgroup	Assignment	RX Freq	RX Tone/NAC	TX Freq	TX Tone/NAC	Mode (A, D, or M)	Remarks
	1	COMMAND	CMD 1	ALL DIVISIONS	167.1000	162.2	169.7500	162.2	A	SHIP MTN
	2	COMMAND	CMD 2	UNASSIGNED	000.0000		000.0000		A	
	3	COMMAND	CMD 3	UNASSIGNED	000.0000		000.0000		A	
	4	BACKUP NET	SRF ADM	ALL DIVISIONS	168.1250		170.4750	127.3	A	GORDON MTN
	5	TACTICAL	NIFC T5	DIV C/H	166.7250	162.2	167.7250	162.2	A	
	6	TACTICAL	NIFC T6	DIV EV	166.7750	162.2	166.7750	162.2	A	
	7	TACTICAL	NIFC T7	UNASSIGNED	168.2500	162.2	168.2500	162.2	A	
	8	TACTICAL	NIFC T1	DIV L	168.0500	162.2	168.0500	162.2	A	
	9	TACTICAL	NIFC T3	DIV Z	168.6000	162.2	168.6000	162.2	A	
	10	AIR TO GROUND	A/G TAC	ALL DIVISIONS	165.3875		165.3875		A	
	11	AIR TO GROUND	A/G CMD	UNASSIGNED	000.0000		000.0000		A	
	12	TACTICAL	R5 TAC 4	DIV W	166.5500	162.2	166.5500	162.2	A	
	13	TACTICAL	R5 TAC 5	DIV A	167.1125	162.2	167.1125	162.2	A	
	14	TACTICAL	R5 TAC 6	DIV N	168.2375	162.2	168.2375	162.2	A	
	15	EMS TAC	CALCORD	ALL DIVISIONS	156.0750		156.0750	156.7	A	MEDICAL A/G
	16	AIR GUARD	GUARD	ALL DIVISIONS	168.6250		168.6250	110.9	A	EMERGENCY ONLY
	20	AIR GUARD	GUARD	ALL DIVISIONS	168.6250		168.6250	110.9	A	EMERGENCY ONLY

6. Prepared By	(Communications Unit Leader)	Name: CHRIS PERRY (T)
ICS 205	IAP Page	Date/Time: 08/06/2015 2:100

MEDICAL PLAN	1. INCIDENT NAME Gasquet Complex	2. DATE PREPARED 8/6/15	3. TIME PREPARED 1730	4. OPERATIONAL PERIOD 8/7-8/2014 0600-0600							
5. INCIDENT MEDICAL AID STATIONS											
MEDICAL AID STATIONS		LOCATION		PARAMEDIC							
				YES NO							
Medical Unit		Gasquet ICP		X							
Medical Supply		Base Camp		X							
TRANSPORTATION											
A. Air Ambulances											
NAME		ADDRESS		PHONE							
				PARAMEDIC YES NO							
National Guard H-825 (Day/Night, Hoist)		Redding Airport, CA		Communications X							
CHP H-14 (Day/Night, Hoist)		Redding Airport, CA		(530) 842-3515 X							
Cal Fire Kneeland Helitack H-102 (short haul ONLY)		Kneeland Station, CA		(707) 444-2863 X							
Coast Guard (Day/Night, Hoist)		Air Station Humboldt Bay, CA		(707) 839-6100 X							
Reach 5 Air Medical		Redding, CA		(530) 351-5148 X							
Mercy Air Ambulance 105		Medford, Oregon		1-800-903-9000 X							
PHI Air Medical		Redding, CA		1-800-597-9571 X							
B. Ground Ambulances											
Del Norte Ambulance, Station 2		2600 Morehead Rd Crescent City CA		Communications X							
7. HOSPITALS											
NAME		ADDRESS		TRAVEL TIME		PHONE		HELIPAD		BURN CENTER	
				AIR	GRND			YES	NO	YES	NO
Sutter Coast Hospital		800 E Washington Crescent City CA. N. 41 46.454 x W 124 11.537			25min	ER: 707-464-8888 Gen: 707-464-8511			X		X
Mercy Med. Center Level 3 Trauma		914 Pine St. Mt. Shasta, CA. N. 40 34.14 x W. 122 23.97		45m	2.5hr	(530)926-9360		X			X
Rogue Valley Med Center Level 2 Trauma		2825 Barnett Rd. Medford, OR. N. 42 19.092 W. 122 49.833		30m	2.5hr	(541)789-7100		X			X
UC Davis Med Center Level 1 Trauma Burn Center		2315 Stockton Blvd. Sacramento, CA N. 38 33.3 x W. 121 27.3		2hr	7.0hr	(916) 734-3636 Burn Center (916) 734-3790 ER		X		X	
8. MEDICAL EMERGENCY PROCEDURES											
<p>In the event of a medical emergency provide the following information to your Division or Happy Camp Communications on Command.</p> <ol style="list-style-type: none"> 1. Declare the nature of the emergency. <ol style="list-style-type: none"> a. Medical injury/illness? b. Is injury/illness life threatening? 2. If life threatening, then request that the designated frequency be cleared for emergency traffic. 3. Identify the on-scene Point of Contact (POC) by resource and last name (i.e POC is TFLD Smith). 4. Identify nature of incident, number injured, patient assessment(s) and location (geographic and GPS coordinates). 5. Identify on-scene medical personnel by position and name (i.e EMT Jones). 6. Identify preferred method of patient transport. 7. Request any additional resources and/or equipment needed 8. Document all information received and transmitted on the radio or phone. 9. Identify any changes in the on-scene Point of Contact or medical personnel as they occur. 						<p><u>INJURY REPORTING PROCEDURES</u></p> <p>NATURE OF INJURY _____ # of Patients _____</p> <p>TRANSPORTATION NEEDED Air _____ Ground _____</p> <p>REM Needed Y ___ N ___ Estimated Air Temp _____</p> <p>LAT _____ LONG _____ Elevation _____</p> <p>Specific Hazards In Area _____</p> <p>PATIENT UNIT ID _____</p> <p>REMINDER: DO NOT GIVE PT NAME OVER RADIO</p> <p>IS MEDICAL PERSONNEL WITH PATIENT: YES ___ NO ___</p> <p>AGE ___ SEX: MALE ___ FEMALE ___</p> <p>ALL EMERGENCIES---Secure the area and identify witnesses for later investigation. Keep an accurate log of events. Medical Unit, Zone 1 (949) 812-8736, (714)334-4966 Office (530)493-1506 Medical Unit, Zone 2 (916) 591-8802 (916) 215-2732</p>					
9. PREPARED BY (MEDICAL UNIT LEADER)		10. REVIEWED BY (SAFETY OFFICER)									
ICS 206 8-78		Gena Fowlkes MEDL (909) 762-9032									
		James Aragon SOF2									

AIR OPERATIONS SUMMARY

PREPARED BY: Ted Visser *for MRF*

PREPARED DATE/TIME: 08/06/15 1900

1. INCIDENT NAME: Gasquet Complex

2. OPERATIONAL PERIOD DATE: 08/07/15

3. START TIME: 0700

4. END TIME: 2000

5. SUNRISE: 0616

6. SUNSET: 2028

3. REMARKS (Safety Notes, Hazards, Air Operations Special Equipment, etc.)

Thunderstorms, erratic winds. Low wires, cables, power lines.
 Divisions, contact Helibase for all aviation needs, include coordinates of possible helispot/unimproved landing locations.
 Possible smoke concerns.
 Track all retardant usage and location if used.
 Do not dip from lakes near 41 35.000 x 123 43.000
 Cave HB Gate 10155#
 Six Rivers Disp. Air Desk 707-726-1266

4. MEDEVAC

A/C:
See Med Plan

5. TFR: 5/7876

Radius: 10 NM
 Altitude: 9000 MSL
 Centerpoint: N 41 40.00
 W 123 50.00
 Freq: 128.0750

6. PERSONNEL	Phone	7. FREQUENCIES	AM	FM	8. FIXED-WING	# Avail / Type/ Make-Model / FAA N# / Base(s)
AOBD: Ted Visser	619-981-2409	AIR/AIR FW:		166.4500	Airtankers:	Available through Dispatch SEAT 898, A-9 SEAT 820, A-10
ASGS: Galen Young	575-574-8720	AIR/AIR RW:	128.0750		Leadplanes:	Available through Dispatch
ATGS: Ron Serabia	619-549-4787	AIR/GROUND CMD: AIR/GROUND TAC:		165.3875	ATBase:	
ATGS:		COMMAND: RX: TX:		167.1000 169.7500 Tone 15 162.2	ATGS Aircraft:	N 4579N, A-6 N 1596G, A-8
HEB1: Melvin Tate	850-849-0405	DECK:			AAB:	
HEB2:		AIR GUARD:		168.6250		Cave- HOS Trif., E-2, Chris Long, 208-539-7108 Cave- 49er WT, E-41 Bobby Alvarez, 619-300-0801

9. HELICOPTERS (Use Additional Sheets As Necessary)

FAA N#	TY	MAKE/MODEL	BASE	AVAILABLE	START	REMARKS	FAA N#	TY	MAKE/MODEL	BASE	AVAILABLE	START	REMARKS
N612CK	1	S-61	Cave	0700	0800	CWN							



Incident within an Incident Action Plan

Position Assignment Supportive Actions

Division Supervisor

- See items 1-6 on page one
- If unable to access accident/incident location, delegate command to a closer qualified resource

Medical Unit Leader

- Respond to Comm Unit as soon as possible
- Coordinate with Division Supervisor to ensure proper resources are rapidly ordered
- Assign a MEDL to the scene and other positions to support the response as needed
- Monitor condition updates of patient(s) and coordinate response with Operations

Communications Unit Leader

- Maintain clear radio traffic and monitor communications to support response
- Recommend appropriate security and investigative process
- Assess the need for critical Incident Stress Response

Safety Officer

- Provide for Safety personnel on scene as needed
- Recommend appropriate security and investigative process
- Assess the need for critical Incident Stress Response

Air Attack Supervisor

- Obtain coordinates of the emergency location
- Coordinate air-medical response
- Assist and support the designated Point of Contact with communications and coordination of the emergency response as necessary

IC, Command & General Staff

- Manage the emergency and direct specific responsibilities to individual positions to provide an appropriate response
- Notify the host unit and host dispatch center of the size-up information
- Constantly monitor and assess the appropriate response and adapt direction as needed
- Submit all documentation pertaining to the emergency to the Plans Chief

Reference the full Incident Medical Emergency Plan for additional



Incident within an Incident Action Plan

When the scope or complexity of the emergency exceeds division resource needs

This plan is designed to identify the initial actions that should be taken by the first arriving personnel on a serious accident. This person may be a single resource, engine boss, or a crew boss. Accidents or incidents within an incident happen rapidly and require sound, calm initial decisions to handle the problem, while still focusing on the main incident. The following checklist provides some key thoughts and actions.

The first arriving person to any accident should notify their Division Supervisor, or the Div Sup assigned to that location.

Advise of the critical information needed:

- Accident scene safety assessment and advise incoming personnel
- Number of injuries and their severity
- Special equipment needs (extrication, low/high angle rescue, fire protection or suppression)
- Assist the injured as necessary without endangering yourself or other personnel
- Do not move trauma victims unless their safety is in jeopardy
- Utilize PINK pages of the Incident Response Pocket Guide (IRPG) for patient assessment/medical procedures

Remain aware of surroundings and delegate personnel to monitor the main fire

The Division Supervisor will assume command of the accident/incident scene upon arrival. The following list outlines the general duties and tasks that should be completed on most accidents/incidents.

1. Delegate division oversight to another Division Supervisor or other qualified person.
2. Request a clear frequency from Comm and consider switching to designated Emergency Tactical (Incident Comm will notify the MEDL who will initiate the medical plan for injuries)
3. Order/delegate resources appropriate for the accident/incident (crew EMT's, Line EMT's or Line Medics, rescue equipment, patient transport needs, manpower)
4. Notify Operations Section Chief and Safety Officer on all accidents/incidents.
5. Begin to document the event accurately and completely. Use ICS form 201 if the event is large or complex.
6. Protect the scene for Investigators

Reference the full Incident Medical Emergency Plan for additional



Health & Safety Message

Incident: Gasquet Complex CA-SRF-001488	Date/Op Period: 8/7-8/2015 0600-0600
---	--

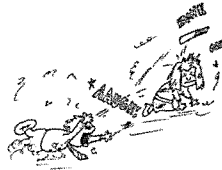
Hazards & Risks

Hazards:

Hazards on the fire line and roadways continue to be a topic and difficult to deal with. Unfamiliar Topographer, Steep Terrain, Debris on the road ways, and poor footing are a big concern on the divisions. Hazard trees are also a concern on all divisions. Refer to **IRPG pg.22** for hazard tree common risks that may be encountered. Heavy equipment, Now that the incident is growing, you will start seeing heavy equipment showing up on some divisions. Refer to **IRPG pg. 80** for information needed when working around heavy equipment.

Dehydration = Heat related injuries:

Heat illness continues to be a big concern continuous hydration could contribute to a yourself and your crews to ensure they are



this year. The lack of loss of energy. Monitor hydrating all day.

Escape Routes and Safety Zones:

Do you have your escape route and safety zones identified? In the areas we're working, it could be difficult to identify them. Take the extra minute out of your day to identify those safety zone, and more importantly make them known to all.

Driving:

When driving to and from your divisions and through the community, follow the posted speed limits. We are all visitors in this community, being respectful and friendly will ensure the forest continues their great relationship with the community.

Narrow roadways in the fire area could be a situation that shouts watch out. Driving defensively, with head lights on, and watch your speeds while rounding tight corners.

Emergencies on the divisions: Refer to Team 2, Incident With-In an Incident in the IAP. During your tail board briefings, discuss this with your crews.

Prepared By: John Bates SOF2	Approved: James Aragon SOF2
-------------------------------------	------------------------------------

L. Lookouts **C.** Communications **E.** Escape Routes **S.** Safety Zones

BE MINDFUL

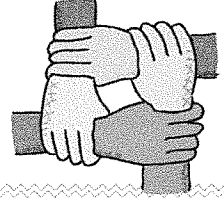
INCIDENT SAFETY ANALYSIS 215a

Friday August 07, 2015

8. Location	9. Hazard	6. Control or Abatement Action (Engineering, Administrative, PPE, Avoidance, Education, etc)
All	Poisonous Plants	<ul style="list-style-type: none"> ~ Identify and Avoid hazard areas ~ Launder clothing ~ Shower frequently
All	Driving & Traffic	<ul style="list-style-type: none"> ~ Practice "Defensive Driving" techniques traveling on all roads and city streets, mitigation strategy includes: <ul style="list-style-type: none"> ~ Use spotters when backing ~ Honk horn to alert personnel when backing ~ Always use headlights ~ Yield to pedestrians and bicycles ~ Observe posted speed limits ~ Follow 3 second rule of following distance when driving ~ Use chock blocks, turn wheels into hill
All	Hazard Trees	<ul style="list-style-type: none"> ~ Follow "Hazard Tree Safety" guidelines, IRPG pages 20 & 21 ~ Post lookouts, or use a spotter in mop-up areas with personnel ~ Don't park vehicles or take breaks in high concentrations of hazard trees ~ Establish trigger points for disengagement during high wind events
All	Chain Saw Operations	<ul style="list-style-type: none"> ~ Follow "Hazard Tree Safety" guidelines, IRPG pages 20 & 21 ~ Look up, down around for hazard tree indicators ~ Only fell and buck trees within your expertise, and training ~ Follow "Procedural Felling Operations" on page 89 in IRPG ~ Do not fall trees during high wind events
All	Firing Operations & Devices	<ul style="list-style-type: none"> ~ Only personnel trained in the use of each device will be authorized to use firing equipment. ~ Ensure all personnel are aware of firing operation that may affect them. ~ Wear appropriate PPE. ~ Ensure aerial/ground ignition plans have been adequately developed and personnel are briefed.
All	Injury & Medical Emergency	<ul style="list-style-type: none"> ~ Assist injured employee appropriate medical care ~ Use EMT's on Division for initial care ~ Follow medical protocol as outlined in ICS-206



Human Resource Message



- SoCal IMT2 Human Resource Specialist has arrived on the Gasquet Complex -

My role is to:

- **promote mutual respect and communication**
- **be a focal point for informal resolution of issues and concerns involving discrimination or harassment**
- **serve as an open and empathetic channel through which individuals assigned to this fire can raise questions, discuss concerns, and get answers about an aspect of their work environment—be it practices, policies, operating procedures, facilities, or work conditions.**

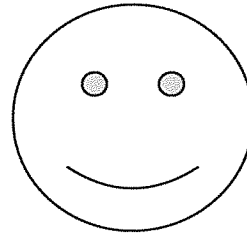
If you need to talk about a concern, please contact me at the HRSP office or call me at 909-731-1771.

Kathy Kreyns
HRSP

The page is framed by stylized eye icons. There are six rows of icons. The top row has six icons. The middle two rows have five icons each. The bottom row has six icons. The eyes are simple line drawings with radiating lines for eyelashes.

Training Message For the Day

- **Be safe!!**
- **Check the taskbook DAILY.**
- **Plan which tasks to train & which to evaluate DAILY.**
- **Document successfully completed tasks DAILY.**



Good News!! Over 25 Trainees are checked in with the Training Specialist – helps to document their training and provide more support. Let's be sure all trainees have a good and safe assignment.

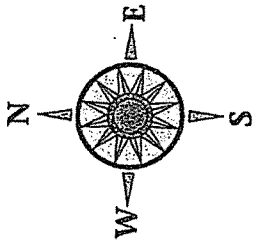
Training Specialist, Ann Hutchinson

Desk – Next to Check In / DMOB

623-293-8628

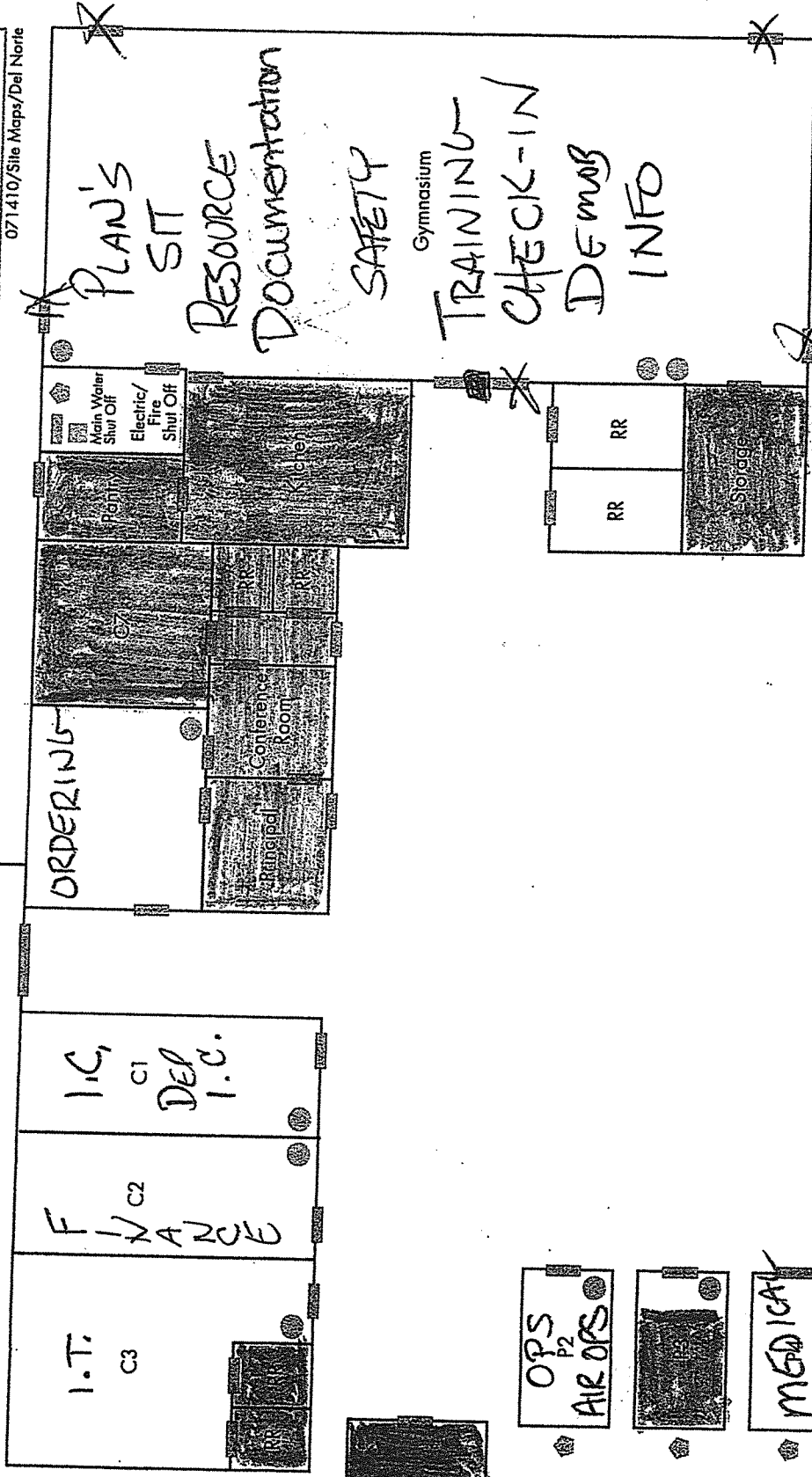
Mountain School
 55 Azalea Lane
 Gasquet, CA 95543
 (707) 457-3211

ICP
ADMIN



- P. Portable
- C. Classroom
- Exit/Door
- Fire Alarm Panel
- Water Shut Off
- Electrical Shut Off
- Fire Extinguisher

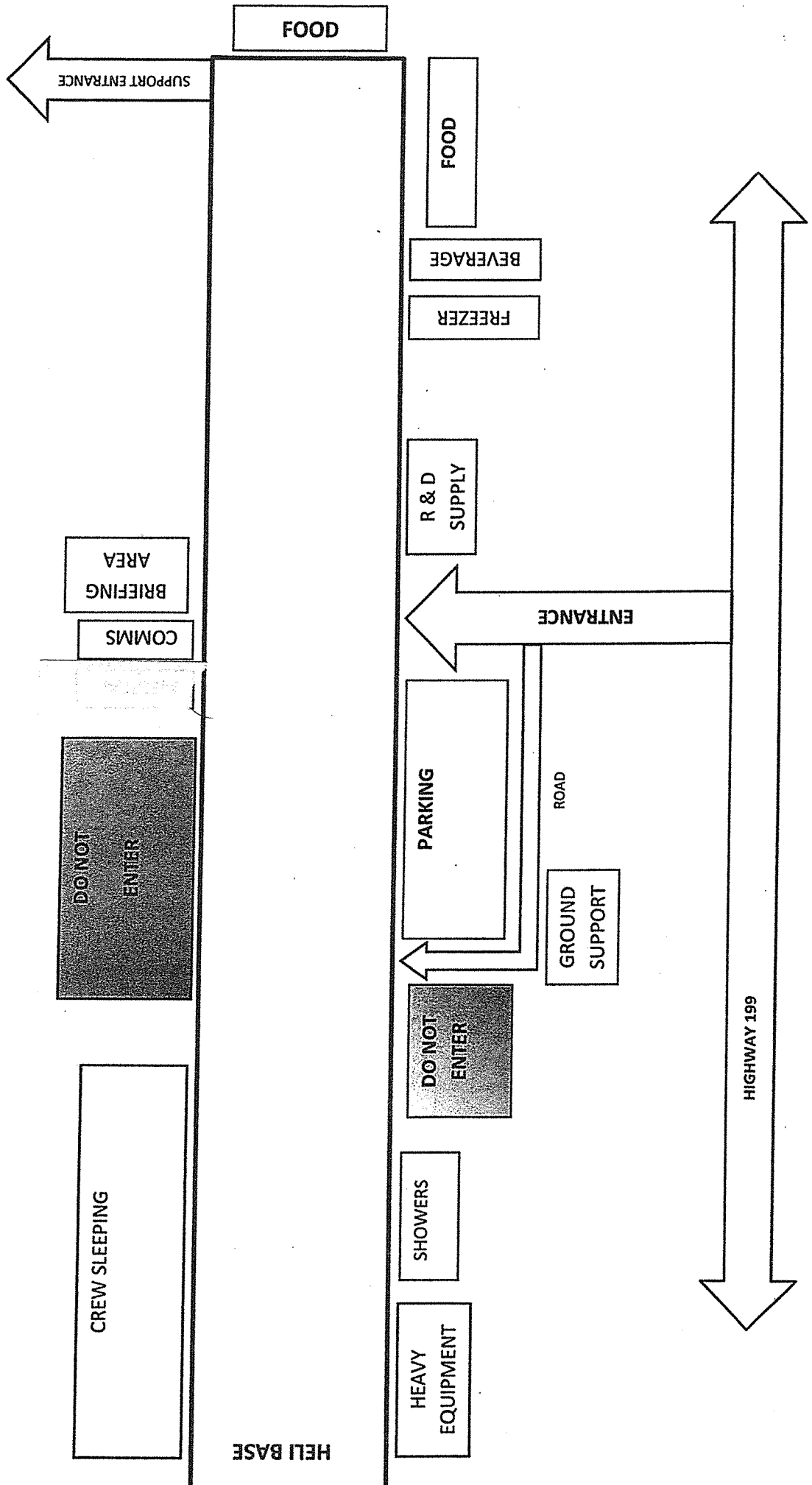
071410/Site Maps/Del Norte



Bus Barn

8/5/2015 1100

SK



8-6 TIM KNOWL

