

# GASQUET COMPLEX

## INCIDENT ACTION PLAN

OPERATIONAL PERIOD

AUG 11 - AUG 12, 2015

0600-0600



*"Adapt...Improvise...and Overcome"*



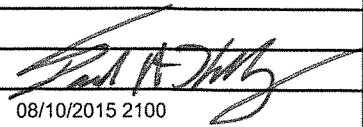

CA-SRF-001488

P5J0PQ (0510)

NAD 83

dd° m.mm'

## INCIDENT OBJECTIVES (ICS 202)

<b>1. Incident Name:</b>		<b>2. Operational Period:</b> 0600 - 0600	
GASQUET COMPLEX		Date/Time From: 08/11/2015 0600      TUE	Date/Time To: 08/12/2015 0600      WED
<b>3. Objective(s):</b>			
<p><b>STRATEGIC FRAMEWORK:</b> THE FRAMEWORK FOR THE GASQUET COMPLEX STRATEGIC PLAN CONSISTS OF USING A COMBINATION OF DIRECT ATTACK WHERE FEASIBLE, OTHERWISE INDIRECT USING NATURAL BARRIERS. A KEY ELEMENT IS FLEXIBILITY AND THE ABILITY TO APPLY THE RIGHT RESOURCE TO THE RIGHT TASK AT THE RIGHT TIME. FIRELINE WILL BE CONSTRUCTED ONLY WHERE FEASIBLE AND SAFE TO DO SO.</p> <p><b>LEADERS INTENT:</b> PROVIDE THE HIGHEST LEVEL OF CUSTOMER SERVICES TO ALL INVOLVED WITH OR IMPACTED BY THE GASQUET COMPLEX. ALL INCIDENT PERSONNEL SHOULD BE PREPARED TO TAKE THE APPROPRIATE ACTIONS REGARDING:</p> <ul style="list-style-type: none"> <li>• PERSONAL INTERACTIONS BOTH INSIDE AND OUTSIDE THE INCIDENT MANAGEMENT ORGANIZATION.</li> <li>• PERSONAL SAFETY AND THE SAFETY OF OTHERS.</li> <li>• AN INCIDENT-WITHIN-AN-INCIDENT.</li> </ul> <p><b>OBJECTIVES:</b></p> <ul style="list-style-type: none"> <li>• PROVIDE FOR FIREFIGHTER AND PUBLIC SAFETY BY ENSURING L C E S IS EVALUATED USING SOUND RISK MANAGEMENT PRINCIPLES.</li> <li>• MAINTAIN AND BUILD COOPERATOR AND STAKEHOLDER RELATIONSHIPS.</li> <li>• SUPPRESS FIRES WHILE NOT EXPOSING FIREFIGHTERS OR AIRCRAFT TO UNNECESSARY RISKS.</li> <li>• IDENTIFY AND PROTECT NATIVE AMERICAN TRADITIONAL AREAS AND OTHER SENSITIVE CULTURAL AND HISTORIC SITES.</li> </ul>			
<b>4. Operational Period Command Emphasis:</b>			
UTILIZE SUPPRESSION STRATEGIES COMMENSURATE WITH VALUES AT RISK. IMPLEMENT TACTICS WHICH INCREASE THE PROBABILITIES OF SUCCESS WHILE HOLDING EXISTING CONTAINMENT.			
<b>General Situational Awareness:</b>			
CONCERN FOR TODAY IS THE POSSIBILITY OF A RED FLAG WARNING. EXTREME FIRE BEHAVIOR IS POSSIBLE WITH THE PRESENTS OF THE RED FLAG WARNINGS. CONFIRM WITH YOUR CREWS THAT ESCAPE ROUTES AND SAFETY ZONES ARE IDENTIFIED AND KNOWN.			
<b>5. Site Safety Plan Required?</b> Yes <input type="checkbox"/> No <input checked="" type="checkbox"/>			
<b>Approved Site Safety Plan(s) Located at:</b>			
<b>6. Incident Action Plan</b> (the items checked below are included in this Incident Action Plan):			
<input checked="" type="checkbox"/> ICS 202	<input type="checkbox"/> ICS 207	Other Attachments:	
<input checked="" type="checkbox"/> ICS 203	<input type="checkbox"/> ICS 208	<input checked="" type="checkbox"/> SAFETY / 215A	
<input checked="" type="checkbox"/> ICS 204	<input checked="" type="checkbox"/> ICS 220	<input checked="" type="checkbox"/> INCIDENT WITHIN AN INCIDENT	
<input checked="" type="checkbox"/> ICS 205	<input checked="" type="checkbox"/> Map/Chart	<input checked="" type="checkbox"/> TRAINING MESSAGE	
<input type="checkbox"/> ICS 205A	<input checked="" type="checkbox"/> Weather Forecast/Tides/Currents	<input checked="" type="checkbox"/> HR MESSAGE	
<input checked="" type="checkbox"/> ICS 206			
<b>7. Prepared by:</b> DAVE LATTIMORE      Position/Title:      PSC2		Signature: 	
<b>8. Approved by Incident Commander:</b>		Name:      DON GARWOOD      Signature: 	
ICS 202      IAP Page		Date/Time:      08/10/2015 2100	

## ORGANIZATION ASSIGNMENT LIST (ICS 203)

<b>1. Incident Name:</b>		<b>2. Operational Period:</b> 0600 - 0600	
GASQUET COMPLEX		Date/Time From: 08/11/2015 0600	Date/Time To: 08/12/2015 0600
		TUE	WED
<b>3. Incident Commander(s) and Command Staff:</b>		<b>7. Operations Section:</b>	
IC/UC	DON GARWOOD	OPS SECTION CHIEF	NICKIE WASHINGTON DARRELL MILLER
DEPUTY	DAVE KELLY		
SAFETY OFFICER	JAMES ARAGON; JOHN BATES FRED HERNANDEZ (T)	PLANNING OPS	MATTHEW CONKLIN AARON THOMPSON (T)
INFORMATION OFFICER	JIM WILKINS; ROBERT POOLE ASCENSION BRIBIESCAS		
LIAISON OFFICER	LARRY LA VOGUE 909-855-5756	DIVISION/GROUP	A - COON FIRE MITCH FOWLKES DAN O'CONNOR (T)
HUMAN RESOURCES	KATHY KREYNS 909-731-1771	DIVISION/GROUP	C - COON FIRE TODD MCDIVITT BRIAN BERRY (T)
<b>4. Agency/Organization Representative(s):</b>		DIVISION/GROUP	D - COON FIRE TRENT INGRAM KEN VAN WIG (T)
<b>Agency/Organization</b>	<b>Name</b>	DIVISION/GROUP	E - BEAR FIRE DAVID MARTINEZ JOHN OWINGS (T)
USFS	DAVE PALMER	DIVISION/GROUP	G - BEAR FIRE ERIC PLATZ CHRIS ST. PIERRE (T)
GASQUET VFD	NICK KARANPOULOS	DIVISION/GROUP	H - WILLIAMS FIRE UNSTAFFED
CAL EMA	JOHN SALVATE	DIVISION/GROUP	L/N - PEAK FIRE CANDICE KUTROSKY PAUL MANDOLINI (T)
CAL TRANS		DIVISION/GROUP	V - SUMMIT FIRE PETE VILLA DAVID WOODY (T)
SRF-NFFE	ROBERTA CORAGLIOTTI 530-784-7542 JOHN MC RAE 707-845-8017	DIVISION/GROUP	W - FEEDER FIRE GLENN WEBB AL WARD (T)
		DIVISION/GROUP	Z - FEEDER FIRE ADAM KOHLEY ROBERT ALLAN (T)
		DIVISION/GROUP	CONTINGENCY JEREMY COWIE BRIAN FABBRI (T)
<b>5. Planning Section:</b>		<b>7b. Air Operations Branch:</b>	
CHIEF	DAVE LATTIMORE	AIR OPS BRANCH DIRECTOR	TED VISSER
DEPUTY	RICH STERRY (T)	AIR SUPPORT SUPERVISOR	GALEN YOUNG
RESOURCES UNIT	K HAUDUCOEUR, N MASTERS JOSEPH SCURI (T)	AIR ATTACK SUPERVISOR	RON SERABIA CLIFF CLARIDGE
SITUATION UNIT	GORDON TAMPLIN(T), TIM KNORR(T)	AIR TANKER COORDINATOR	
DOCUMENTATION	VANESSA HANSON	HELICOPTER COORDINATOR	
DEMOB UNIT	JIM STITELER (T)		
FIRE BEHAVIOR	BYRON KIMBALL	<b>8. Finance/Administration Section:</b>	
SOPL	BOB LINEBACK	CHIEF	DEBBIE YORK
TRAINING SPECIALIST	ANN HUTCHINSON	TIME UNIT	SHARON R MAKOSKY DEANNA THOMPSON (T)
GISS	R MURILLO; A. KIRSCH; A SALDIVAR(T)	PROCUREMENT UNIT	JAISY SCOTT (T)
CTSP	CHARLES VERTREES	COMPENSATION UNIT	
<b>6. Logistics Section:</b>		COST UNIT	THOMAS STEELE KRIS STERBENS (T)
CHIEF	ERIC SWEETMAN		
DEPUTY	STEVE KING (T)		
SUPPLY UNIT	EVAN TISS; DAVID WHITNEY		
FACILITIES UNIT	ART CURLEY; DOUG WINN(T)		
GROUND SUPT UNIT	CHRIS HALEY; RON NOORDMAN		
COMM UNIT	DAVE LARKIN; CHRIS PERRY(T)		
MEDICAL UNIT	GENA FOWLKES MATTHEW MENARD (T)		
SECURITY UNIT	HEATHER NAIGUS		
FOOD UNIT	RICHARD WAITE		
<b>9. Prepared By:</b>	<b>Name:</b> KYLE HAUDUCOEUR	<b>Position/Title:</b> RESL	<b>Signature:</b>
ICS 203	IAP Page	<b>Date/Time:</b> 08/10/2015 2100	

# FIRE BEHAVIOR FORECAST

FORECAST NUMBER: #8	TYPE OF FIRE: Wildland Fire
FIRE NAME: Gasquet Complex	OPERATIONAL PERIOD: August 11, 2015
DATE ISSUED: August 10, 2015	TIME ISSUED: 2000
UNIT: Smith River NRA, Six Rivers NF	SIGNED: <i>Byron R. Kimball</i>
	Typed/printed:/s/ Byron R. Kimball FBAN

## INPUTS

**WEATHER SUMMARY:** Off shore low pressure ridge will drop southward along the coast, deepening the marine layer and tightening the pressure gradient. Increased moisture will lead to stronger recoveries overnight and a slight chance for showers overnight. Changes reflective of a Diurnal shift may occur early afternoon resulting in lower RH and Southeast winds late in the shift.

MAX TEMPERATURE.....High 60's to Low 70's.

MIN HUMIDITY.....Approximately 40% to 50%

EYE LEVEL WINDS.....Light and Variable early, Becoming West up to 8' possible gusts to 12 mph in the afternoon,

**For more specific information, please see the Spot Weather forecast**

## OUTPUTS

### FIRE BEHAVIOR

#### GENERAL:

Off-shore type conditions may lead to increased activity late in the burn window. Higher elevations may see the RH drop below 40 by midafternoon. Coupling this with slopes of greater than 35% can lead to more energetic runs back upslope from fire established in the bottoms. Eye level winds may be stronger than previously observed but still without strong direction due to the broken terrain. Upslope will predominate, lending itself to increased intensities if runs develop.

With line construction in incomplete burns, be positive that you are exposing the black edge and getting all the hot ash and embers inside your line.

#### SPECIFIC:

Timber Understory: Fire behavior in the Understory models may become more Intense. Drier RH and Increased Gusty wind may increase spotting and overall general activity.

ROS: 5 to 10 ch/hr.

FL: 6 to 8 ft.

Timber Litter: Timber Litter fire behavior should be more active. Gusty winds coupled with lower RH may lead to more complete consumption with an associated increase in intensity. Stay aware of rollout and upslope runs through incomplete burns.

ROS: 3 to 6 ch/hr.

FL: 2 to 3 ft.

Rollout of heavier fuels continues to present a concern as the fires work into the drainages. Be prepared for a slope reversal run if fire establishes with sufficient heat.

### AIR OPERATIONS:

Marine Layer comes back into play as the Low Pressure pulls moist air into the fire area. Clearing by late morning back to the coast.

## SAFETY

Pay attention to the weather. Remember the predicted wind shift for early afternoon. 40% RH has proven to be a trigger for increased activity.

## SPOT FORECAST #8 FOR GASQUET COMPLEX (Below 4,000 ft.)

NATIONAL WEATHER SERVICE EUREKA CA  
627 PM PDT MON AUG 10 2015

FORECAST IS BASED ON REQUEST TIME OF 1653 PDT ON AUGUST 10.  
IF CONDITIONS BECOME UNREPRESENTATIVE...CONTACT THE NATIONAL WEATHER SERVICE.

**DISCUSSION**...LOW PRESSURE OFFSHORE SINKING TOWARD THE OREGON AND CALIFORNIA BORDER FOR TUESDAY WILL MAINTAIN A STRONG PRESSURE GRADIENT ACROSS THE GASQUET COMPLEX. THIS WILL BRING A SOUTH TO SOUTHWEST WIND THROUGH MUCH OF THE DAY WITH GUSTY CONDITIONS DEVELOPING IN THE LATE AFTERNOON AND EARLY EVENING. SOUTH-SOUTHWEST WINDS ARE EXPECTED TO BRING HUMIDITY VALUES UP...WITH A QUASI-ONSHORE FLOW. HOWEVER...AS THE WIND SHIFTS TO THE SOUTHEAST IN THE LATE AFTERNOON AND EARLY EVENING...HUMIDITY VALUES ARE EXPECTED TO FALL...DUE TO OFFSHORE FLOW. WINDS WILL REMAIN GUSTY...ESPECIALLY ALONG THE RIDGES...THROUGH THE NIGHT. THIS LOW WILL ALSO CONTINUE TO BRING A CHANCE OF SHOWERS TO THE SITE THROUGH EARLY TUESDAY EVENING.

WINDS ARE EXPECTED TO REMAIN GUSTY THROUGH WEDNESDAY NIGHT BEFORE THE LOW BEGINS TO THE LIFT OUT OF THE AREA ON THURSDAY. ONSHORE FLOW IS FORECAST TO DEVELOP THROUGH THE DAY ON THURSDAY.

### TUESDAY...

SKY/WEATHER.....MOSTLY CLOUDY. HAZE AND AREAS OF SMOKE. SLIGHT  
CHANCE OF RAIN SHOWERS.  
MAX TEMPERATURE.....66-74.  
MIN HUMIDITY.....51-58 PERCENT.  
EYE LEVEL WINDS.....SOUTH WINDS 4 TO 6 MPH...BECOMING SOUTH-SOUTHEAST  
5 TO 8 MPH WITH GUSTS TO 12 MPH IN THE AFTERNOON.  
SURROUNDING RIDGE...SOUTH WINDS 8 TO 12 MPH WITH GUSTS TO 17 MPH...  
BECOMING SOUTH-SOUTHEAST 12 TO 17 MPH WITH GUSTS  
TO 25 MPH IN THE LATE AFTERNOON.  
WIND (20 FT).....SOUTH WINDS 5 TO 8 MPH WITH GUSTS TO 12 MPH...  
BECOMING SOUTH-SOUTHEAST 9 TO 14 MPH WITH GUSTS  
TO 22 MPH IN THE LATE AFTERNOON.  
LAL.....1.  
CWR.....19 PERCENT.

### TUESDAY NIGHT...

SKY/WEATHER.....MOSTLY CLOUDY. HAZE AND AREAS OF SMOKE. SLIGHT  
CHANCE OF RAIN SHOWERS.  
MIN TEMPERATURE.....AROUND 55.  
MAX HUMIDITY.....80-90 PERCENT.  
EYE LEVEL WINDS.....SOUTH-SOUTHEAST WINDS 5 TO 8 MPH.  
SURROUNDING RIDGE...SOUTH-SOUTHEAST WINDS BECOMING SOUTHEAST 10 TO 15  
MPH WITH GUSTS TO 20 MPH OVERNIGHT.  
WIND (20 FT).....SOUTH-SOUTHEAST WINDS BECOMING SOUTHEAST 7 TO 12  
MPH WITH GUST TO 17 MPH OVERNIGHT.  
LAL.....1.  
CWR.....0 PERCENT.

# SPOT FORECAST #8A FOR GASQUET CMLPX (4,000 ft and Above)

NATIONAL WEATHER SERVICE EUREKA CA  
655 PM PDT MON AUG 10 2015

FORECAST IS BASED ON REQUEST TIME OF 1657 PDT ON AUGUST 10.  
IF CONDITIONS BECOME UNREPRESENTATIVE...CONTACT THE NATIONAL WEATHER SERVICE.

**DISCUSSION...**LOW PRESSURE OFFSHORE SINKING TOWARD THE OREGON AND CALIFORNIA BORDER FOR TUESDAY WILL MAINTAIN A STRONG PRESSURE GRADIENT ACROSS THE GASQUET COMPLEX SOUTH. THIS WILL BRING A MIXED BAG OF WINDS TO THE SITE THROUGH TUESDAY. EYE-LEVEL WINDS WILL LIKELY BE TERRAIN DRIVEN...A RESULT OF BEING SHELTERED FROM THE AMBIENT FLOW...WHILE 20 FT WINDS WILL BE MORE VARIABLE BETWEEN THE AMBIENT SOUTHWEST FLOW AND THE TERRAIN DRIVEN SURFACE WINDS.SURROUNDING RIDGES WILL BE THE MOST AFFECTED BY THE AMBIENT WINDS AND THE MOST GUSTY. BROAD SCALE SOUTH-SOUTHWEST WINDS ARE EXPECTED TO BRING HUMIDITY VALUES UP...WITH A QUASI-ONSHORE FLOW. HOWEVER...AS THE WIND SHIFTS TO THE SOUTHEAST IN THE LATE AFTERNOON AND EARLY EVENING ON TUESDAY...HUMIDITY VALUES ARE EXPECTED TO FALL...DUE TO OFFSHORE FLOW. THIS LOW WILL ALSO CONTINUE TO BRING A CHANCE OF SHOWERS TO THE SITE THROUGH EARLY TUESDAY EVENING.

WINDS ARE EXPECTED TO REMAIN GUSTY THROUGH WEDNESDAY NIGHT BEFORE THE LOW BEGINS TO THE LIFT OUT OF THE AREA ON THURSDAY. ONSHORE FLOW IS FORECAST TO DEVELOP THROUGH THE DAY ON THURSDAY.

## TUESDAY...

SKY/WEATHER.....MOSTLY CLOUDY. HAZE AND AREAS OF SMOKE. SLIGHT CHANCE OF RAIN SHOWERS.  
MAX TEMPERATURE.....AROUND 65.  
MIN HUMIDITY.....38 PERCENT.  
EYE LEVEL WINDS.....UPSLOPE WINDS 5 TO 6 MPH...SHIFTING TO THE WEST 5 TO 7 MPH IN THE AFTERNOON.  
SURROUNDING RIDGE...SOUTH WINDS 8 TO 12 MPH WITH GUSTS TO 17 MPH... BECOMING SOUTH-SOUTHEAST 12 TO 17 MPH WITH GUSTS TO 25 MPH IN THE LATE AFTERNOON.  
WIND (20 FT).....EAST WINDS 6 TO 8 MPH...INCREASING TO 8 TO 10 MPH WITH GUSTS TO 15 MPH IN THE LATE AFTERNOON.  
LAL.....1.  
CWR.....20 PERCENT.

## TUESDAY NIGHT...

SKY/WEATHER.....MOSTLY CLOUDY. HAZE AND AREAS OF SMOKE THROUGH THE NIGHT. SLIGHT CHANCE OF RAIN SHOWERS.  
MIN TEMPERATURE.....AROUND 55.  
MAX HUMIDITY.....77 PERCENT.  
EYE LEVEL WINDS.....WEST WINDS 4 MPH...BECOMING VARIABLE OVERNIGHT.  
SURROUNDING RIDGE...SOUTH-SOUTHEAST WINDS BECOMING SOUTHEAST 10 TO 15 MPH WITH GUSTS TO 20 MPH OVERNIGHT.  
WIND (20 FT).....EAST WINDS 6 TO 8 MPH...BECOMING SOUTHEAST OVERNIGHT.  
LAL.....1.  
CWR.....0 PERCENT.

## Division/Group Assignment List (ICS 204 WF)

<b>1. Incident Name:</b>			<b>3.</b>			
GASQUET COMPLEX			Branch:		Division/Group:	
<b>2. Operational Period:</b> 0600 - 0600			<b>A - COON FIRE</b>			
Date/Time From: 08/11/2015 0600 TUE		Date/Time To: 08/12/2015 0600 WED				
<b>4. Operations Personnel</b>						
<b>OPERATIONS CHIEF</b>		NICKIE WASHINGTON DARRELL MILLER		<b>DIVISION/GROUP SUPERVISOR</b>		MITCH FOWLKES DAN O'CONNOR (T)
<b>PLANNING OPS</b>		MATT CONKLIN AARON THOMPSON (T)		<b>AIR ATTACK SUPERVISOR</b>		RON SERABIA
<b>5. Resources Assigned this Period</b>						
Strike Team / Task Force / Resource Designator		LWD	Leader	Number Persons	Drop Off PT./Time	Pick Up PT./Time
TFLD JEREMIAH PHILLIPS O-75		08/20		1	ICP/0630	ICP/1900
TFLD DARIN KEYSE (T) O-78		08/20		1	ICP/0630	ICP/1900
ENG3 SRF 11		08/23	JOE ENIEM	5	ICP/0630	ICP/1900
ENG3 SRF 12		08/23	AL GOFNER	5	ICP/0630	ICP/1900
HEQB ROBERT HEISEY O-84		08/20		1	ICP/0630	ICP/1900
DOZ2 ROEN 9481 E-90		08/20	PAUL ROEN	1	ICP/0630	ICP/1900
HEQB TIMOTHY LANTERMAN O-83		08/21		1	ICP/0630	ICP/1900
DOZ2 FISK'S TREE E-91		08/21	RICK ANDERSON	1	ICP/0630	ICP/1900
HEQB TERRY CARRICO O-217		08/24		1	ICP/0630	ICP/1900
SKG4 L & L EXCAVATING W/ TRSPT E-111		08/23	SHANE NODINE	2	ICP/0630	ICP/1900
SKG3 UNDERHILL 1 W/ TRSPT E-112		08/22	JOE BRADBURY	2	ICP/0630	ICP/1900
FEMT RANDOLPH O-133 / VANZINNI O-134		08/21		2	ICP/0630	ICP/1900
SOFR BERG (T) O-146 / SCHNEIDER (T) O-90		08/17		2	ICP/0630	ICP/1900
<b>6. Control Operations/Work Assignments:</b>						
<ul style="list-style-type: none"> <li>• SCOUT FOR OPPORTUNITIES TO REACH CONTAINMENT OBJECTIVES.</li> <li>• CONTINUE INDIRECT DOZER LINE FROM 17N07J ROAD WEST TO SOUTH FORK OF THE SMITH RIVER AND IDENTIFY SAFETY ZONES.</li> </ul>						
<b>7. Special Instructions:</b>						
<ul style="list-style-type: none"> <li>• COORDINATE AND ORDER AIRCRAFT FOR RETARDANT NEEDS WITH AIR ATTACK.</li> </ul>						
<b>8. Division/Group Communication Summary</b>						
Function	Channel	RX Frequency N/W	RX Tone/NAC	TX Frequency N/W	TX Tone/NAC	Mode
COMMAND	1	167.1000	162.2	169.7500	162.2	A
TACTICAL	13	167.1125	162.2	167.1125	162.2	A
BACKUP NET	4	168.1250		170.4750	127.3	A
AIR TO GROUND	10	165.3875		165.3875		A
<b>9. Prepared By (Resource Unit Leader)</b>			<b>Approved By (Planning Section Chief)</b>		<b>Date</b>	<b>Time</b>
NANCY MASTERS			DAVE LATTIMORE		08/10/2015	2100

## Division/Group Assignment List (ICS 204 WF)

<b>1. Incident Name:</b>			<b>3.</b>			
GASQUET COMPLEX			Branch:		Division/Group:	
<b>2. Operational Period:</b> 0600 - 0600					<b>C - COON FIRE</b>	
Date/Time From: 08/11/2015 0600 TUE	Date/Time To: 08/12/2015 0600 WED					
<b>4. Operations Personnel</b>						
<b>OPERATIONS CHIEF</b>		NICKIE WASHINGTON DARRELL MILLER		<b>DIVISION/GROUP SUPERVISOR</b>		
				TODD MCIVITT BRIAN BERRY (T)		
<b>PLANNING OPS</b>		MATT CONKLIN AARON THOMPSON (T)		<b>AIR ATTACK SUPERVISOR</b>		
				RON SERABIA		
<b>5. Resources Assigned this Period</b>						
Strike Team / Task Force / Resource Designator	LWD	Leader	Number Persons	Drop Off PT./Time	Pick Up PT./Time	
HCM BEAR PEAK O-59	08/23	FRED FLEISCHMAN	9	ICP/0630	ICP/1900	
ES3 2141C E-122	08/20	PETE DAVIS	21	ICP/0630	ICP/1900	
TFLD A. VIKTORA O-80 / D. WHEELER (T) O-106	08/18		2	ICP/0630	ICP/1900	
ENG3 LKP 5031 E-75	08/14	RICK BERGEN	3	ICP/0630	ICP/1900	
ENG3 SRM 331 E-76	08/14	MIKE AVERY	4	ICP/0630	ICP/1900	
ENG3 CRK 379 E-77	08/14	JOHN ANGELL	4	ICP/0630	ICP/1900	
ENG3 SANTA CLARA VFD 33 E-29	08/19	TYREL HANSEN	4	ICP/0630	ICP/1900	
ENG4 MQ FRANCO 169 E-84	08/14	MIKE PICKERING	3	ICP/0630	ICP/1900	
ENG6 ALBANY 2180 E-79	08/14	TIM SMYSER	3	ICP/0630	ICP/1900	
HEQB RICH WATERS O-85 / DOZ2 WARNER E-43	08/18		4	ICP/0630	ICP/1900	
HEQB MCCLELLAN O-216/DOZ2 BROWNING E-44	08/18		2	ICP/0630	ICP/1900	
WTT2 WOOD'S 99 E-87	08/15	STEVE WENDT	2	ICP/0630	ICP/1900	
WTS2 ALL AGENCY E-38	08/18	HILL JOHN	1	ICP/0630	ICP/1900	
WTS2 SIERRA TIMBER E-42	08/19	DOUG LINGEN	1	ICP/0630	ICP/1900	
FAL1 NORTH ZONE FALLERS #1 O-94	08/18	ALAN STEWART	2	ICP/0630	ICP/1900	
<b>6. Control Operations/Work Assignments:</b>						
<ul style="list-style-type: none"> <li>• SECURE ALL FIRE WEST OF THE 17N07G RD FROM DP 20 TO COON CREEK. IMPROVE HAND LINE FROM DOZER LINE TO COON CREEK.</li> </ul>						
<b>7. Special Instructions:</b>						
<ul style="list-style-type: none"> <li>• COORDINATE AND ORDER AIRCRAFT FOR RETARDANT NEEDS WITH AIR ATTACK.</li> </ul>						
<b>8. Division/Group Communication Summary</b>						
Function	Channel	RX Frequency N/W	RX Tone/NAC	TX Frequency N/W	TX Tone/NAC	Mode
COMMAND	1	167.1000	162.2	169.7500	162.2	A
TACTICAL	5	166.7250	162.2	166.7250	162.2	A
BACKUP NET	4	168.1250		170.4750	127.3	A
AIR TO GROUND	10	165.3875		165.3875		A
<b>9. Prepared By (Resource Unit Leader)</b>		<b>Approved By (Planning Section Chief)</b>		<b>Date</b>	<b>Time</b>	
NANCY MASTERS		DAVE LATTIMORE		08/10/2015	2100	





## Division/Group Assignment List (ICS 204 WF)

<b>1. Incident Name:</b>			<b>3.</b>			
GASQUET COMPLEX			<b>Branch:</b>		<b>Division/Group:</b>	
<b>2. Operational Period:</b> 0600 - 0600					<b>E - BEAR FIRE</b>	
Date/Time From: 08/11/2015 0600 TUE	Date/Time To: 08/12/2015 0600 WED					
<b>4. Operations Personnel</b>						
<b>OPERATIONS CHIEF</b>		NICKIE WASHINGTON DARRELL MILLER		<b>DIVISION/GROUP SUPERVISOR</b>		DAVID MARTINEZ JOHN OWINGS (T)
<b>PLANNING OPS</b>		MATT CONKLIN AARON THOMPSON (T)		<b>AIR ATTACK SUPERVISOR</b>		RON SERABIA
<b>5. Resources Assigned this Period</b>						
Strike Team / Task Force / Resource Designator		LWD	Leader	Number Persons	Drop Off PT./Time	Pick Up PT./Time
HC2I GRAYBACK 8B C-5		08/12	TIM NYGREN	20	ICP/0630	ICP/1900
HC2 FORT APACHE 3 C-10		08/20	BURNETTE BENNETT	20	ICP/0630	ICP/1900
TFLD S. SISCOE O-79 / N. BALENT (T) 0-209		08/20		2	ICP/0630	ICP/1900
ENG3 UTAH COUNTY 12 E-31		08/19	ANDREW WATSON	4	ICP/0630	ICP/1900
ENG3 PICTURE ROCK 121 E-26		08/20	ROCKY ORTIZ	4	ICP/0630	ICP/1900
ENG3 ARCHER MTN 13 E-28		08/19	JUSTUS BARTON	3	ICP/0630	ICP/1900
ENG6 NV-WID 2616 E-35		08/19	CHAD NIBLETT	3	ICP/0630	ICP/1900
ENG6 WEBER FIRE 661 E-33		08/19	SCOTT HANEY	3	ICP/0630	ICP/1900
ENG6 GREAT BASIN 311 E-34		08/19	TYLER ERSKINE	3	ICP/0630	ICP/1900
DO22 PLUMAS 1 E-126		08/24	JAMES SMITH	4	ICP/0630	ICP/1900
WTS2 YREKA OUTLANDS E-19		08/18	ALLEN WILLIAMS	2	ICP/0630	ICP/1900
FAL1 BROWN O-201 / MILLER TIMBER O-204		08/21	D. BROWN / C. GOODSON	4	ICP/0630	ICP/1900
TFLD TONY ERICKSON O-232		08/23		1	ICP/0630	ICP/1900
FEMP FELDMAN O-135 / FEMT WICKLAS O-132		08/20		2	ICP/0630	ICP/1900
<b>6. Control Operations/Work Assignments:</b>						
<ul style="list-style-type: none"> <li>CONTINUE TO HOLD AND IMPROVE LINE ALONG THE 17N03 ROAD. ...SCOUT FOR OPPORTUNITIES TO REACH CONTAINMENT OBJECTIVES.</li> <li>IMPROVE ANCHOR POINT AND SECURE HANDLINE CONSTRUCTION ON WEST FLANK.</li> </ul>						
<b>7. Special Instructions:</b>						
<ul style="list-style-type: none"> <li>COORDINATE AND ORDER AIRCRAFT FOR RETARDANT NEEDS WITH AIR ATTACK.</li> </ul>						
<b>8. Division/Group Communication Summary</b>						
Function	Channel	RX Frequency N/W	RX Tone/NAC	TX Frequency N/W	TX Tone/NAC	Mode
COMMAND	1	167.1000	162.2	169.7500	162.2	A
TACTICAL	6	166.7750	162.2	166.7750	162.2	A
BACKUP NET	4	168.1250		170.4750	127.3	A
AIR TO GROUND	10	165.3875		165.3875		A
<b>9. Prepared By (Resource Unit Leader)</b>			<b>Approved By (Planning Section Chief)</b>		<b>Date</b>	<b>Time</b>
JOE SCURI (T)			DAVE LATTIMORE		08/10/2015	2100

## Division/Group Assignment List (ICS 204 WF)

<b>1. Incident Name:</b>			<b>3.</b>			
GASQUET COMPLEX			Branch:		Division/Group:	
<b>2. Operational Period:</b> 0600 - 0600			<b>G - BEAR FIRE</b>			
Date/Time From: 08/11/2015 0600 TUE		Date/Time To: 08/12/2015 0600 WED				
<b>4. Operations Personnel</b>						
<b>OPERATIONS CHIEF</b>		NICKIE WASHINGTON DARRELL MILLER		<b>DIVISION/GROUP SUPERVISOR</b>		ERIC PLATZ CHRIS ST PIERRE (T)
<b>PLANNING OPS</b>		MATT CONKLIN AARON THOMPSON (T)		<b>AIR ATTACK SUPERVISOR</b>		RON SERABIA
<b>5. Resources Assigned this Period</b>						
Strike Team / Task Force / Resource Designator		LWD	Leader	Number Persons	Drop Off PT./Time	Pick Up PT./Time
HC1 SMITH RIVER IHC		08/23	TIM MEMMER	20	ICP/0630	ICP/1900
HC2 FORT APACHE 4 C-11		08/20	DANNY EDWARDS	19	ICP/0630	ICP/1900
TFLD JOEL PETERS O-226		08/23		1	ICP/0630	ICP/1900
FELB CHRIS HENRIE O-181		08/24		1	ICP/0630	ICP/1900
FAL1 NORTH ZONE FALLERS #2 O-95		08/18	BILLY BELMONT	2	ICP/0630	ICP/1900
FAL1 NORTH ZONE FALLERS #4 O-97		08/18	BILL MEADOWS	2	ICP/0630	ICP/1900
FAL1 MCKELLER TREE O-202		08/22	DOUG MCKELLAR	2	ICP/0630	ICP/1900
SOFR BILL KERSHAW (T) O-3.19		08/15		1	ICP/0630	ICP/1900
<b>6. Control Operations/Work Assignments:</b>						
<ul style="list-style-type: none"> <li>• SCOUT FOR OPPORTUNITIES FOR DIRECT LINE CONSTRUCTION.</li> <li>• KEEP FIRE WEST OF THE SOUTH FORK OF THE SYSKIYOU DRAINAGE.</li> <li>• PREP BEAR BASIN LOOKOUT TOWER.</li> </ul>						
<b>7. Special Instructions:</b>						
<ul style="list-style-type: none"> <li>• COORDINATE AND ORDER AIRCRAFT FOR RETARDANT NEEDS WITH AIR ATTACK.</li> <li>• FOBS SCHEID / BAERTSCHI (T) WORKING IN DIV E AND DIV G.</li> </ul>						
<b>8. Division/Group Communication Summary</b>						
Function	Channel	RX Frequency N/W	RX Tone/NAC	TX Frequency N/W	TX Tone/NAC	Mode
COMMAND	1	167.1000	162.2	169.7500	162.2	A
TACTICAL	7	168.2500	162.2	168.2500	162.2	A
BACKUP NET	4	168.1250		170.4750	127.3	A
AIR TO GROUND	10	165.3875		165.3875		A
<b>9. Prepared By (Resource Unit Leader)</b>			<b>Approved By (Planning Section Chief)</b>		<b>Date</b>	<b>Time</b>
KYLE HAUDUCOEUR			DAVE LATTIMORE		08/10/2015	2100



## Division/Group Assignment List (ICS 204 WF)

<b>1. Incident Name:</b>			<b>3.</b>			
GASQUET COMPLEX			<b>Branch:</b>		<b>Division/Group:</b>	
<b>2. Operational Period:</b> 0600 - 0600					<b>L/N - PEAK FIRE</b>	
Date/Time From: 08/11/2015 0600 TUE			Date/Time To: 08/12/2015 0600 WED			
<b>4. Operations Personnel</b>						
<b>OPERATIONS CHIEF</b>		NICKIE WASHINGTON DARRELL MILLER		<b>DIVISION/GROUP SUPERVISOR</b>		CANDICE KUTROSKY PAUL MANDOLINI (T)
<b>PLANNING OPS</b>		MATT CONKLIN AARON THOMPSON (T)		<b>AIR ATTACK SUPERVISOR</b>		RON SERABIA
<b>5. Resources Assigned this Period</b>						
Strike Team / Task Force / Resource Designator		LWD	Leader	Number Persons	Drop Off PT./Time	Pick Up PT./Time
TFLD COX O-74/ NEWBY (T) O-73		08/18		2	ICP/0630	ICP/1900
ENG3 TRI CITY 106 E-25		08/19	ANTHONY GRAINGER	4	ICP/0630	ICP/1900
ENG3 MONTANA FIRE 341 E-30		08/20	MIKE WARREN	3	ICP/0630	ICP/1900
ENG4 FIRESTORM 03 E-114		08/14	BRAD CLEMENS	3	ICP/0630	ICP/1900
ENG4 CENTRAL WILDFIRE 741 E-116		08/14	DAVID PARSON	3	ICP/0630	ICP/1900
ENG6 SANTA CLARA 32 E-37		08/19	GABE RUNOLFSON	2	ICP/0630	ICP/1900
WTS2 BOWNE WATER SERVICE E-40		08/17	MICHAEL BOONE	1	ICP/0630	ICP/1900
FEMP LUCAS O-137/ FEMT CASTANEDA O-131		08/20		2	ICP/0630	ICP/1900
<b>6. Control Operations/Work Assignments:</b>						
<ul style="list-style-type: none"> <li>SECURE ALL FIRE SOUTH OF BOUNDARY TRAIL...KEEP ALL FIRE NORTH OF G-O ROAD AND BOUNDARY TRAIL.</li> <li>MONITOR FIRE PROGRESSION. ANY ACTION TOWARDS PERIMETER CONTROL MUST BE APPROVED BY OPERATIONS.</li> </ul>						
<b>7. Special Instructions:</b>						
<ul style="list-style-type: none"> <li>COORDINATE AND ORDER AIRCRAFT FOR RETARDANT NEEDS WITH AIR ATTACK.</li> <li>USE AIRCRAFT TO MONITOR DIV H - WILLIAMS FIRE.</li> <li>RAPID EXTRACTION MODULE (R.E.M.) AVAILABLE TO ALL DIVISIONS AND CONTINGENCY GROUP.</li> <li>FOBS PENNY / PIPPIN WORKING IN DIVISION</li> </ul>						
<b>8. Division/Group Communication Summary</b>						
Function	Channel	RX Frequency N/W	RX Tone/NAC	TX Frequency N/W	TX Tone/NAC	Mode
COMMAND	1	167.1000	162.2	169.7500	162.2	A
TACTICAL	8	168.0500	162.2	168.0500	162.2	A
BACKUP NET	4	168.1250		170.4750	127.3	A
AIR TO GROUND	10	165.3875		165.3875		A
<b>9. Prepared By (Resource Unit Leader)</b>			<b>Approved By (Planning Section Chief)</b>		<b>Date</b>	<b>Time</b>
JOE SCURI (T)			DAVE LATTIMORE		08/10/2015	2100



## Division/Group Assignment List (ICS 204 WF)

<b>1. Incident Name:</b>			<b>3.</b>			
GASQUET COMPLEX			Branch:		Division/Group:	
<b>2. Operational Period:</b> 0600 - 0600					<b>W - FEEDER FIRE</b>	
Date/Time From: 08/11/2015 0600 TUE	Date/Time To: 08/12/2015 0600 WED					
<b>4. Operations Personnel</b>						
<b>OPERATIONS CHIEF</b>		NICKIE WASHINGTON DARRELL MILLER		<b>DIVISION/GROUP SUPERVISOR</b>		GLENN WEBB AL WARD (T)
<b>PLANNING OPS</b>		MATT CONKLIN AARON THOMPSON (T)		<b>AIR ATTACK SUPERVISOR</b>		RON SERABIA
<b>5. Resources Assigned this Period</b>						
Strike Team / Task Force / Resource Designator		LWD	Leader	Number Persons	Drop Off PT./Time	Pick Up PT./Time
HC21 WHITE MOUNTAIN #1 C-3		08/19	KEITH M SARGENT	19	ICP/0630	ICP/1900
TFLD CHAD HYATT O-144		08/16		1	ICP/0630	ICP/1900
TFLD GREG OLEARY O-234		08/24		1	ICP/0630	ICP/1900
ENG2 GASQUET 214 E-78		08/14	TOM ZURFLUEH	4	ICP/0630	ICP/1900
ENG4 WEBER FIRE DISTRICT 464 E-80		08/14	BARRY LOCKE	4	ICP/0630	ICP/1900
ENG6 TONTO 1247 E-82		08/16	SHAWN O'CONNELL	7	ICP/0630	ICP/1900
ENG6 AMERICAN FIRE CO 61 E-86		08/14	MATT MORRELL	3	ICP/0630	ICP/1900
ENG6 AMERICAN FIRE CO 62 E-85		08/14	MANI MORRELL	3	ICP/0630	ICP/1900
DO22 A TEAM 1 E-127		08/24	PETE GIRARONO	4	ICP/0630	ICP/1900
WTT2 SRF 15 E-45		08/16	JACOB MC ADAMS	2	ICP/0630	ICP/1900
WTT2 GASQUET VFD E-88		08/15	SALENA COX	2	ICP/0630	ICP/1900
FAL1 NORTH ZONE FALLERS #3 O-96		08/18	RICK MEE	2	ICP/0630	ICP/1900
<b>6. Control Operations/Work Assignments:</b>						
<ul style="list-style-type: none"> <li>• CONTINUE PREPPING THE 14N39 ROAD FROM DP30 NORTH TO 14N39G ROAD.</li> <li>• SECURE AND HOLD FIRE ALONG 14N39 ROAD TO 14N39G ROAD.</li> <li>• SCOUT FOR OPPORTUNITY TO REACH CONTAINMENT OBJECTIVES.</li> </ul>						
<b>7. Special Instructions:</b>						
<ul style="list-style-type: none"> <li>• COORDINATE AND ORDER AIRCRAFT FOR RETARDANT NEEDS WITH AIR ATTACK.</li> <li>• RAPID EXTRACTION MODULE (R.E.M.) AVAILABLE TO ALL DIVISIONS AND CONTINGENCY GROUP.</li> <li>• FOBS MASTERS / RICK / TWEED (T) WORKING IN DIV W AND DIV Z.</li> </ul>						
<b>8. Division/Group Communication Summary</b>						
Function	Channel	RX Frequency N/W	RX Tone/NAC	TX Frequency N/W	TX Tone/NAC	Mode
COMMAND	1	167.1000	162.2	169.7500	162.2	A
TACTICAL	12	166.5500	162.2	166.5500	162.2	A
BACKUP NET	4	168.1250		170.4750	127.3	A
AIR TO GROUND	10	165.3875		165.3875		A
<b>9. Prepared By (Resource Unit Leader)</b>			<b>Approved By (Planning Section Chief)</b>		<b>Date</b>	<b>Time</b>
JOE SCURI (T)			DAVE LATTIMORE		08/10/2015	2100







# INCIDENT RADIO COMMUNICATIONS PLAN (ICS 205)

<b>1. Incident Name:</b> GASQUET COMPLEX		<b>2. Date/Time Prepared:</b> Date: 08/10/2015 Time: 2100		<b>3. Operational Period:</b> 0600 - 0600		Date/Time From: 08/11/2015 0600		Date/Time To: 08/12/2015 0600	
				TUE					

4. Basic Radio Channel Use:										
Zone Group	Ch #	Function	Channel Name/Trunked Radio System Talkgroup	Assignment	RX Freq	RX Tone/NAC	TX Freq	TX Tone/NAC	Mode (A, D, or M)	Remarks
	1	COMMAND	CMD 1	ALL DIVISIONS	167.1000	162.2	169.7500	162.2	A	SHIP MTN
	2	COMMAND	CMD 2	UNASSIGNED	000.0000		000.0000		A	
	3	COMMAND	CMD 3	UNASSIGNED	000.0000		000.0000		A	
	4	BACKUP NET	SRF ADM	ALL DIVISIONS	168.1250		170.4750	127.3	A	GORDON MTN
	5	TACTICAL	NIFC T5	DIV C/H	166.7250	162.2	167.7250	162.2	A	
	6	TACTICAL	NIFC T6	DIV E	166.7750	162.2	166.7750	162.2	A	
	7	TACTICAL	NIFC T7	DIV G	168.2500	162.2	168.2500	162.2	A	
	8	TACTICAL	NIFC T1	DIV L/N	168.0500	162.2	168.0500	162.2	A	
	9	TACTICAL	NIFC T3	DIV Z	168.6000	162.2	168.6000	162.2	A	
	10	AIR TO GROUND	A/G TAC	ALL DIVISIONS	165.3875		165.3875		A	
	11	AIR TO GROUND	A/G CMD	UNASSIGNED	000.0000		000.0000		A	
	12	TACTICAL	R5 TAC 4	DIV W	166.5500	162.2	166.5500	162.2	A	
	13	TACTICAL	R5 TAC 5	DIV A	167.1125	162.2	167.1125	162.2	A	
	14	TACTICAL	R5 TAC 6	DIV DV	168.2375	162.2	168.2375	162.2	A	
	15	EMS TAC	CALCORD	ALL DIVISIONS	156.0750		156.0750	156.7	A	MEDICAL A/G
	16	AIR GUARD	GUARD	ALL DIVISIONS	168.6250		168.6250	110.9	A	EMERGENCY ONLY
	20	AIR GUARD	GUARD	ALL DIVISIONS	168.6250		168.6250	110.9	A	EMERGENCY ONLY

<b>6. Prepared By</b> (Communications Unit Leader)	Name: CHRIS PERRY (T)
Signature:	Date/Time: 08/10/2015 2100
ICS 205	IAP Page

# AIR OPERATIONS SUMMARY

PREPARED BY: Ted Visser

PREPARED DATE/TIME: 08/10/15 1900

1. INCIDENT NAME: Gasquet Complex  
 2. OPERATIONAL PERIOD DATE: 08/11/15 START TIME: 0700 END TIME: 2000 SUNRISE: 0620 SUNSET: 2023

3. REMARKS (Safety Notes, Hazards, Air Operations Special Equipment, etc.)  
 Thunderstorms, erratic winds. Low wires, cables, power lines.  
 Divisions, contact Helibase for all aviation needs, include coordinates of possible helispot/unimproved landing locations.  
 Possible smoke concerns.  
 Bear Fire Div E, 41 48.928 123 44.678  
 Coon Fire Div C, 41 45.786 123 57.709  
 Feeder Fire Div W, 41 35.065 123 50.726  
 Peak Fire Div L, 41 33.065 123 46.134  
 Summit Fire Div V, 41 35.000 123 47.800  
 Williams Fire Div H, 41 35.290 123 45.621

4. MEDEVAC  
 A/C: 512

5. TFR: 5/7876  
 Radius: 10 NM  
 Altitude: 9000 MSL  
 Centerpoint: N 41 40.00  
 W 123 50.00  
 Freq: 128.0750  
 Illinois Valley Tower Freq: 133.275

6. PERSONNEL	Phone	7. FREQUENCIES	AM	FM	8. FIXED-WING	# Avail / Type/ Make-Model / FAA N# / Base(s)
AOBD: Ted Visser	619-981-2409	AIR/AIR FW:		166.4500	Airtankers:	Available through Dispatch SEAT 898, A-9 SEAT 820, A-10
ASGS: Galen Young	575-574-8720	AIR/AIR RW:	128.0750		Leadplanes:	Available through Dispatch
ATGS: Ron Serabia	619-549-4787	AIR/GROUND CMD: AIR/GROUND TAC:		165.3875	ATBase:	
ATGS: Cliff Claridge	480-688-5330	COMMAND: RX: TX:		167.1000 169.7500 Tone 15 162.2	ATGS Aircraft:	N 4579N, A-6 N 1596G, A-8
HEB1: Melvin Tate	850-849-0405	DECK:		163.100	AAB:	MRR: ICL, Joe Hart, 208-699-1166
HEB1(T): Rita Clipperton	530-559-0905	AIR GUARD:		168.6250	Gary Smith S-31,32,33 Uni Engine 530-598-1434	Cave- HOS Trlr., E-2, Chris Long, 208-539-7108 Cave- 49er WT, E-41 Bobby Alvarez, 619-300-0801

## 9. HELICOPTERS (Use Additional Sheets As Necessary)

FAA N#	TY	MAKE/MODEL	BASE	AVAILABLE	START	REMARKS	FAA N#	TY	MAKE/MODEL	BASE	AVAILABLE	START	REMARKS
HT-702	1	S-61	Cave	0730	0830	A-20							
HT-782	1	S-64	Cave	TBD	TBD								
512	2	Bell 212	Cave	0730	0830	A-42							
517	2	Bell 205	Cave	TBD	TBD	A-57 Restricted							
988B	3	Bell L3	Cave	TBD	TBD	A-28							

10. TASK/MISSION/ASSIGNMENT (Type/Function includes: Air Tactical, Retardant, Recon, Personnel Transport, Water Dropping, SB, etc.)

TYPE/FUNCTION	NAME OF PERSONNEL OR CARGO (if applic) OR INSTRUCTIONS FOR TACTICAL AIRCRAFT	MISSION START	FLY FROM	FLY TO
Bucket drops per request	Division Sup. To request and coordinate with Air Attack or helibase.			
Recon Flights	To be approved by OPS or AOB			
Cargo / Sling	Per Request from Div Sups, all sling loads / crew shuttles			
Ops Recon				
Div Sup Recon				
DIPSITES	River Dip 41 44.15 X 123 59.02			

<b>MEDICAL PLAN</b>	1. INCIDENT NAME <b>Gasquet Complex</b>	2. DATE PREPARED 8/10/15	3. TIME PREPARED 1730	4. OPERATIONAL PERIOD 8/11-12/2015 0600-0600				
<b>5. INCIDENT MEDICAL AID STATIONS</b>								
MEDICAL AID STATIONS		LOCATION		PARAMEDIC YES NO				
Medical Supply		Base Camp						
<b>TRANSPORTATION</b>								
<b>A. Air Ambulances</b>								
NAME		ADDRESS		PHONE PARAMEDIC YES NO				
National Guard H-825 (Day/Night, Hoist)		Redding Airport, CA		Communications X				
CHP H-14 (Day/Night, Hoist)		Redding Airport, CA		(530) 842-3515 X				
Coast Guard (Day/Night, Hoist)		Air Station Humboldt Bay, CA		(707) 839-6100 X				
CalFire Kneeland Helitack H-102 (Hoist capable)		Kneeland Station, CA		(707) 441-2863 X				
Reach 5 Air Medical		Redding, CA		1-800-338-4045 X				
Mercy Air Ambulance 105		Medford, Oregon		1-800-903-9000 X				
PHI Air Medical		Redding, CA		1-800-597-9571 X				
<b>B. Ground Ambulances</b>								
Del Norte Ambulance, Station 2		2600 Morehead Rd Crescent City CA		Communications X				
<b>C. Rapid Extraction Modules</b>								
R.E.M. – South		Gasquet South Operations		Communications X				
<b>7. HOSPITALS</b>								
NAME	ADDRESS	TRAVEL TIME		PHONE	HELIPAD		BURN CENTER	
		AIR	GRND		YES	NO	YES	NO
Sutter Coast Hospital	800 E Washington Crescent City CA.		25min	ER: 707-464-8888 Gen: 707-464-8511		X		X
Mercy Med. Center Level 3 Trauma	914 Pine St. Mt. Shasta, CA. N. 40 34.14 x W. 122 23.97	45m	4.5hr	(530)926-9360	X			X
Rogue Valley Med Center Level 2 Trauma	2825 Barnett Rd. Medford, OR. N. 42 19.092 W. 122 49.833	30m	2 hr	(541)789-7100	X			X
UC Davis Med Center Level 1 Trauma Burn Center	2315 Stockton Blvd. Sacramento, CA N. 38 33.3 x W. 121 27.3	2hr	7.0hr	(916) 734-3636 Burn Center (916) 734-3790 ER	X		X	
<b>8. MEDICAL EMERGENCY PROCEDURES</b>								
<p><b>In the event of a medical emergency provide the following information to your Divs or Gasquet Communications on Command.</b></p> <ol style="list-style-type: none"> <li>1. Declare the nature of the emergency. <ol style="list-style-type: none"> <li>a. Medical injury/illness?</li> <li>b. Is injury/illness life threatening?</li> </ol> </li> <li>2. If life threatening, then request that the designated frequency be cleared for emergency traffic.</li> <li>3. Identify the on-scene Point of Contact (POC) by resource and last name (i.e POC is TFLD Smith).</li> <li>4. Identify nature of incident, number injured, patient assessment(s) and location (geographic and GPS coordinates).</li> <li>5. Identify on-scene medical personnel by position and name (i.e EMT Jones).</li> <li>6. Identify preferred method of patient transport.</li> <li>7. Request any additional resources and/or equipment needed</li> <li>8. Document all information received and transmitted on the radio or phone.</li> <li>9. Identify any changes in the on-scene Point of Contact or medical personnel as they occur.</li> </ol>				<p><b>INJURY REPORTING PROCEDURES</b></p> <p>NATURE OF INJURY _____ # of Patients _____</p> <p>TRANSPORTATION NEEDED Air _____ Ground _____</p> <p>REM Needed Y _____ N _____ Estimated Air Temp _____</p> <p>LAT _____ LONG _____ Elevation _____</p> <p>Specific Hazards In Area _____</p> <p>PATIENT UNIT ID _____</p> <p>REMINDER: DO NOT GIVE PT NAME OVER RADIO</p> <p>IS MEDICAL PERSONNEL WITH PATIENT: YES _____ NO _____</p> <p>AGE _____ SEX: MALE _____ FEMALE _____</p> <p><b>ALL EMERGENCIES---Secure the area and identify witnesses for later investigation. Keep an accurate log of events.</b></p>				
9. PREPARED BY (MEDICAL UNIT LEADER) <b>Gena Fowlkes-MEDL (909) 762-9032</b>		10. REVIEWED BY (SAFETY OFFICER) <b>James Aragon SOF2</b>						
ICS 206 8-78								

## TRAINING WATCH OUTS

You see your trainer driving out of camp, heading home, and you still haven't gone over your task book.

It's Day 5 of the incident and your trainer still can't remember your name.

You're an Evaluator/Trainer or Trainee and you haven't checked in with the Training Specialist.

***Thanks for checking in with the Training Specialist  
(Located near Check-In / Demob)***

If you need contact Ann Hutchinson, Training Specialist,  
please call her at 623-293-8628.

*The mind is like a parachute, it doesn't work unless it is open*

## STRESS REMINDERS



- ◆ Take action, don't ignore your stress
- ◆ Stay in touch with team members and communicate
- ◆ Talk and share feelings
- ◆ Replenish, rest, get some down time

***Stress is normal and everyone has it.***

**PRACTICE RANDOM ACTS OF KINDNESS!  
IT WILL MAKE ANOTHER PERSON'S DAY!  
IT WILL MAKE YOUR DAY!**

Human Resource Specialist



## ***Health & Safety Message***

<b>Incident: Gasquet Complex</b> <b>CA-SFR-001488</b>	<b>Date/Operational Period:</b> 8/11-12/2015 0600-0600
--	---

### **Hazards & Risks**

**Red Flag Warnings:** The possibility of extreme fire behavior exists for the next 24 hours due to a red flag warning, situational awareness needs to be heightened by all and identify your safety zones and escape routes.

**IRPG situations that shouts watch out:**



# 14. Weather becomes hotter and drier.

# 15. Wind increases and or changes direction

Refer to your IRPG for the 10 standard fire orders and the 18 situations that shout watch out. (Back of the IRPG)

**Steep Terrain and Snags:** All Divisions continue to have rolling rocks, logs, and falling snag hazards. Scout your sections of line and identify the hazards prior to engaging. Use extra caution when driving to your divisions and avoid rolling rocks and debris along the roads.

**Emergency Medical:** Brief your crews on the Gasquet Complex ICS 206 Medical Plan. Being proactive can make a difference when time is of the essence.

**Environmental hazards:**

- Deep burning stump holes
- Hazard trees
- Steep terrain
- Poison oak
- Bears in the area

**(S/A is mandatory)**

**Hazard Trees:**



Trees continue to be one of the biggest and most dangerous obstacles we face on the fire line. Take 5 minutes to brief your crews on hazard trees and snags. You can find this Information in your IRPG page22.

<b>Prepared By: John Bates SOF2</b>	<b>Approved: James Aragon SOF2</b>
-------------------------------------	------------------------------------

**L. Lookouts C. Communications E. Escape Routes S. Safety Zones**  
**BE MINDFUL**

## INCIDENT SAFETY ANALYSIS 215a

- Tuesday, August 11, 2015

8. Location	9. Hazard	6. Control or Abatement Action (Engineering, Administrative, PPE, Avoidance, Education, etc)
All	Poisonous Plants	<ul style="list-style-type: none"> <li>~ Identify and Avoid hazard areas</li> <li>~ Launder clothing</li> <li>~ Shower frequently</li> </ul>
All	Driving & Traffic	<ul style="list-style-type: none"> <li>~ Practice "Defensive Driving" techniques traveling on all roads and city streets, mitigation strategy includes:                             <ul style="list-style-type: none"> <li>~ Use spotters when backing</li> <li>~ Honk horn to alert personnel when backing</li> <li>~ Always use headlights</li> <li>~ Yield to pedestrians and bicycles</li> <li>~ Observe posted speed limits</li> <li>~ Follow 3 second rule of following distance when driving</li> <li>~ Use chock blocks, turn wheels into hill</li> </ul> </li> </ul>
All	Hazard Trees	<ul style="list-style-type: none"> <li>~ Follow "Hazard Tree Safety" guidelines, IRPG pages 20 &amp; 21</li> <li>~ Post lookouts, or use a spotter in mop-up areas with personnel</li> <li>~ Don't park vehicles or take breaks in high concentrations of hazard trees</li> <li>~ Establish trigger points for disengagement during high wind events</li> </ul>
All	Air Operations	<ul style="list-style-type: none"> <li>~ Follow " Aviation Watch-Out Situations" on page 52, IRPG</li> <li>~ Don't plan on air resources for medical transport or resupply.</li> <li>~ Refer to page 65, IRPG for directing bucket drops.</li> <li>~ Ensure positive communication with all air resources.</li> </ul>
All	Extreme Fire Behavior	<ul style="list-style-type: none"> <li>• Share weather observations with all personnel assigned to division</li> <li>• Establish "Trigger Points" to withdraw</li> <li>• Use "Risk Management" process prior to engaging in suppression actions, refer to page 1, IRPG</li> </ul>
All	Chain Saw Operations	<ul style="list-style-type: none"> <li>~ Follow "Hazard Tree Safety" guidelines, IRPG pages 20 &amp; 21</li> <li>~ Look up, down around for hazard tree indicators</li> <li>~ Only fell and buck trees within your expertise, and training</li> <li>~ Follow "Procedural Felling Operations" on page 89 in IRPG</li> <li>~ Do not fall trees during high wind events</li> </ul>
All	Firing Operations & Devices	<ul style="list-style-type: none"> <li>~ Only personnel trained in the use of each device will be authorized to use firing equipment.</li> <li>~ Ensure all personnel are aware of firing operation that may affect them.</li> <li>~ Wear appropriate PPE.</li> <li>~ Ensure aerial/ground ignition plans have been adequately developed and personnel are briefed.</li> </ul>
All	Injury & Medical Emergency	<ul style="list-style-type: none"> <li>~ Assist injured employee appropriate medical care</li> <li>~ Use EMT's on Division for initial care</li> <li>~ Follow medical protocol as outlined in ICS-206</li> </ul>





## **Incident within an Incident Action Plan**

### **Position Assignment Supportive Actions**

#### **Division Supervisor**

- See items 1-6 on page one
- If unable to access accident/incident location, delegate command to a closer qualified resource

#### **Medical Unit Leader**

- Respond to Comm Unit as soon as possible
- Coordinate with Division Supervisor to ensure proper resources are rapidly ordered
- Assign a MEDL to the scene and other positions to support the response as needed
- Monitor condition updates of patient(s) and coordinate response with Operations

#### **Communications Unit Leader**

- Maintain clear radio traffic and monitor communications to support response
- Recommend appropriate security and investigative process
- Assess the need for critical Incident Stress Response

#### **Safety Officer**

- Provide for Safety personnel on scene as needed
- Recommend appropriate security and investigative process
- Assess the need for critical Incident Stress Response

#### **Air Attack Supervisor**

- Obtain coordinates of the emergency location
- Coordinate air-medical response
- Assist and support the designated Point of Contact with communications and coordination of the emergency response as necessary

#### **IC, Command & General Staff**

- Manage the emergency and direct specific responsibilities to individual positions to provide an appropriate response
- Notify the host unit and host dispatch center of the size-up information
- Constantly monitor and assess the appropriate response and adapt direction as needed
- Submit all documentation pertaining to the emergency to the Plans Chief

Reference the full Incident Medical Emergency Plan for additional



## Incident within an Incident Action Plan

### When the scope or complexity of the emergency exceeds division resource needs

This plan is designed to identify the initial actions that should be taken by the first arriving personnel on a serious accident. This person may be a single resource, engine boss, or a crew boss. Accidents or incidents within an incident happen rapidly and require sound, calm initial decisions to handle the problem, while still focusing on the main incident. The following checklist provides some key thoughts and actions.

The first arriving person to any accident should notify their Division Supervisor, or the Div Sup assigned to that location.

#### Advise of the critical information needed:

- Accident scene safety assessment and advise incoming personnel
- Number of injuries and their severity
- Special equipment needs (extrication, low/high angle rescue, fire protection or suppression)
- Assist the injured as necessary without endangering yourself or other personnel
- Do not move trauma victims unless their safety is in jeopardy
- Utilize PINK pages of the Incident Response Pocket Guide (IRPG) for patient assessment/medical procedures

#### Remain aware of surroundings and delegate personnel to monitor the main fire

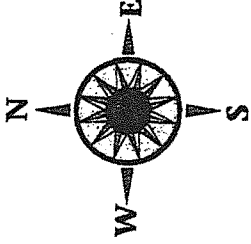
The Division Supervisor will assume command of the accident/incident scene upon arrival. The following list outlines the general duties and tasks that should be completed on most accidents/incidents.

1. Delegate division oversight to another Division Supervisor or other qualified person.
2. Request a clear frequency from Comm and consider switching to designated Emergency Tactical (Incident Comm will notify the MEDL who will initiate the medical plan for injuries)
3. Order/delegate resources appropriate for the accident/incident (crew EMT's, Line EMT's or Line Medics, rescue equipment, patient transport needs, manpower)
4. Notify Operations Section Chief and Safety Officer on all accidents/incidents.
5. Begin to document the event accurately and completely. Use ICS form 201 if the event is large or complex.
6. Protect the scene for Investigators

Reference the full Incident Medical Emergency Plan for additional

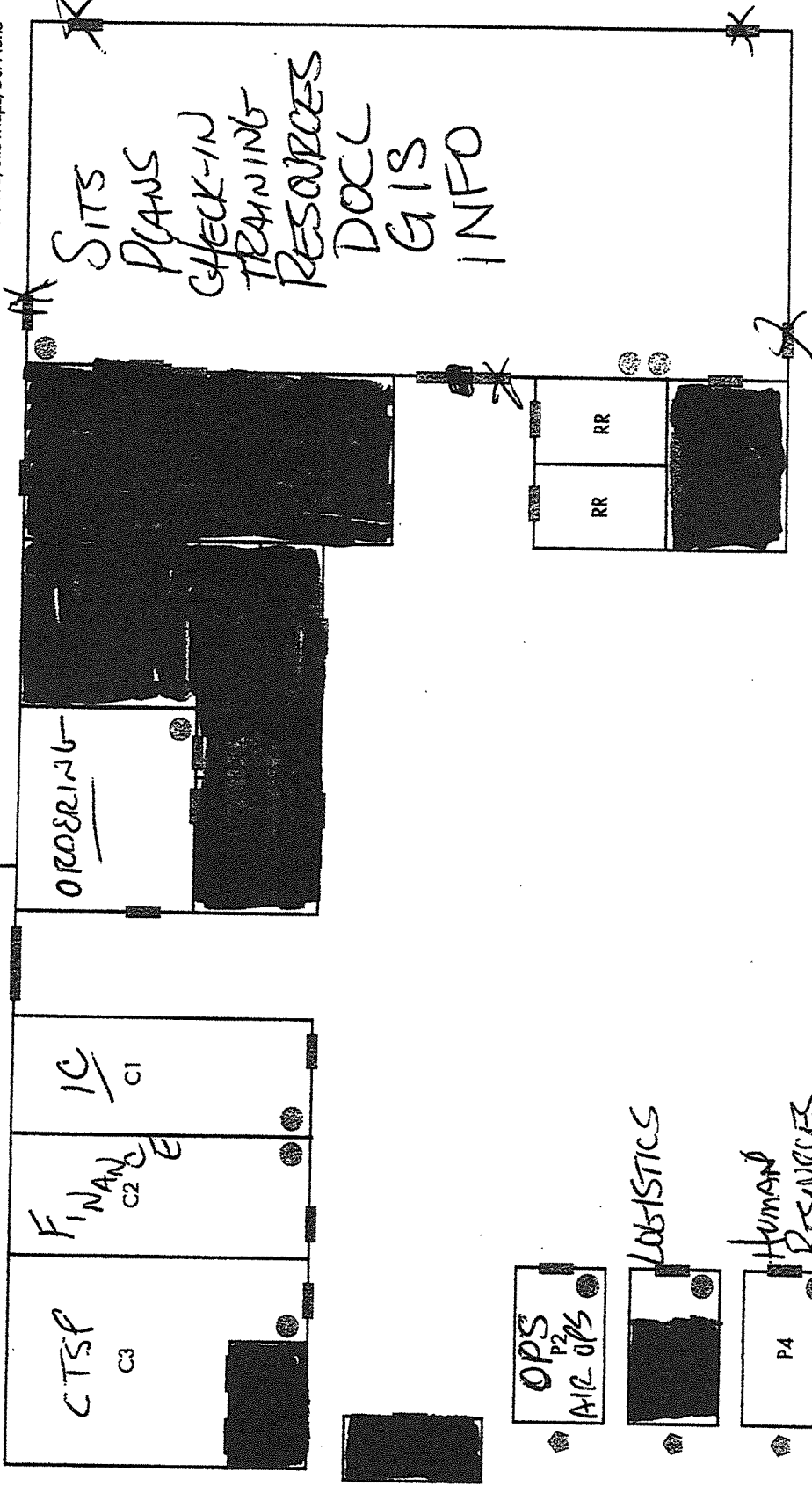
# ICP

**Mountain School**  
55 Azalea Lane  
Gasket, CA 95543  
(707) 457-3211



- |   |                   |        |                     |
|---|-------------------|--------|---------------------|
| P | Portable          | EX-105 | Fire Alarm Panel    |
| C | Classroom         | W      | Water Shut Off      |
|   | Exit/Door         | E      | Electrical Shut Off |
|   | Fire Extinguisher |        |                     |

071410/Site Maps/Del Norte



As of 8/7/2015

# GASQUET COMPLEX BASE CAMP

Updated 08/10/2015

