

Incident Action Plan

Pony Fire
CA KNF - 004500
P5J90S-0505



TUESDAY

JUST THINK... ONLY 193 DAYS TILL 2017

DAY SHIFT
June 21, 2016
0600-1800

INCIDENT OBJECTIVES (ICS 202)

1. Incident Name:		2. Operational Period: DAY	
PONY	Date/Time From: 06/21/2016 0600 TUE	Date/Time To: 06/21/2016 1800 TUE	
3. Objective(s):			
<p>Management Objectives:</p> <ul style="list-style-type: none"> • Ensure that strategies and tactics provide for firefighter and public safety through the application of sound risk management principles. • Minimize the cost of the incident by employing tactics that have the highest probability of success. • Establish and strengthen cooperator, partner, and stakeholder relationships. • Prepare for transition to the Type 3 organization. 			
4. Operational Period Command Emphasis:			
<p>Control Objectives:</p> <p>Pony Fire</p> <ul style="list-style-type: none"> • Monitor the slopover in the Dillon Creek drainage and look for opportunities to minimize spread. • Keep fire within existing containment lines. • Continue to construct and improve direct line to minimize impacts to Highway 96. <p>Dillon Fire</p> <ul style="list-style-type: none"> • Monitor and patrol as needed. 			
General Situational Awareness:			
<ul style="list-style-type: none"> • See attached forecast • See attached safety message 			
5. Site Safety Plan Required? Yes <input type="checkbox"/> No <input checked="" type="checkbox"/>			
Approved Site Safety Plan(s) Located at:			
6. Incident Action Plan (the items checked below are included in this Incident Action Plan):			
<input checked="" type="checkbox"/> ICS 202	<input type="checkbox"/> ICS 207	Other Attachments:	
<input checked="" type="checkbox"/> ICS 203	<input type="checkbox"/> ICS 208	<input checked="" type="checkbox"/> SAFETY MESSAGE	
<input checked="" type="checkbox"/> ICS 204	<input checked="" type="checkbox"/> ICS 220	<input checked="" type="checkbox"/> LCES WORKSHEET	
<input checked="" type="checkbox"/> ICS 205	<input checked="" type="checkbox"/> Map/Chart	<input checked="" type="checkbox"/> "9" LINE EMERGENCY PROCEDURES	
<input type="checkbox"/> ICS 205A	<input checked="" type="checkbox"/> Weather Forecast/Tides/Currents	<input type="checkbox"/>	
<input checked="" type="checkbox"/> ICS 206			
7. Prepared by: JOHN OWEN	Position/Title: PSC2 (T)	Signature:	
8. Approved by Incident Commander:		Signature:	
ICS 202	IAP Page	Date/Time:	

ORGANIZATION ASSIGNMENT LIST (ICS 203)

1. Incident Name:		2. Operational Period: DAY	
PONY		Date/Time From: 06/21/2016 0600 TUE	Date/Time To: 06/21/2016 1800 TUE
3. Incident Commander(s) and Command Staff:		6. Logistics Section:	
IC/UC	RICK YOUNG DAREN DALRYMPLE (T)	CHIEF	JACK COSTELLO
DEPUTY	JOE MOLHOEK	SUPPLY UNIT	MANI BOUSLAUGH
SAFETY OFFICER	TERRY O'CONNELL FRANK PINGICZER (T)	FACILITIES UNIT	RICK CROWTHER
INFORMATION OFFICER	COREY WILFORD	GROUND SUPPORT UNIT	MERLE DRUCKER
LIAISON OFFICER	TIM FIKE	COMMUNICATIONS UNIT	DON STONER
		MEDICAL UNIT	PAT YOUNG RON SANDLER
		FOOD UNIT	REBECCA BAKER
4. Agency/Organization Representative(s):		7. Operations Section:	
Agency/Organization	Name	DAY OPS SECTION CHIEF	SCOTT LUCAS TERRY WALTERS (T)
AGENCY ADMINISTRATOR	PATTY GRANTHAM	NIGHT OPS SECTION CHIEF	
AGENCY ADMIN REP	JEFF MARSZAL NOLAN COLEGROVE	PLANNING OPS	ERIC PETTERSON JASON WITHROW (T)
KARUK TRIBAL REP	BILL TRIPP		
LEAD READ	GREGG BOUSFIELD	DIVISION/GROUP A	UNSTAFFED
HERITAGE READ	ZAC RODRIGUES	DIVISION/GROUP B	HEATHER GROVE ISAAC FLATTLEY (T)
KNF UNION REP	STEVE BUSHY	DIVISION/GROUP C	GORDON MEYER BRIAN BATES (T)
CAL FIRE	PHIL ANZO	DIVISION/GROUP D	MARK JOHNSON MATT WELDON (T)
SISKIYOU OES	JASEN VELA	DIVISION/GROUP H	UNSTAFFED
		DIVISION/GROUP I	UNSTAFFED
		DIVISION/GROUP Z	UNSTAFFED
		DIVISION/GROUP DILLON	UNSTAFFED
5. Planning Section:		7b. Air Operations Branch:	
CHIEF	PATRICK FARRELL	AIR OPS BRANCH DIRECTOR	DENNIS KUSTER
DEPUTY	JOHN OWEN (T)	AIR ATTACK SUPERVISOR	
RESOURCES UNIT	SUSAN PUDDY MICHAEL DUNKEL (T)	AIR SUPPORT SUPERVISOR	JIM GOULD STACI DICKSON
SITUATION UNIT	KEITH FLOOD		
DOCUMENTATION UNIT	REX CRABTREE ISABEL KUSUMOTO (T)	8. Finance/Administration Section:	
DEMOBILIZATION UNIT	NANCY MASTERS	CHIEF	BETH LOPEZ
FIRE BEHAVIOR ANALYST	KEN LARSON TERESA RIESENHUBER (T)	TIME UNIT	PENNY PORTLOCK
TRAINING SPECIALIST	BRIAN LAMPHEAR	EQUIPMENT TIME	JUANITA CORTEZ
GIS SPECIALIST	CLINT E ROBERTS STEVEN WALTERSCHEID	COMPENSATION UNIT	TINA KENNEDY
GIS SPECIALIST	MARK A GRUPE	COST UNIT	SAM RAPPHAHN
COMPUTER SPECIALIST	SHANE NEAL ZACH SOHL		
INCIDENT METEOROLOGIST	SHAWN WEAGLE		
STATUS CHECK-IN	KAREN MCWILLIAMS		
9. Prepared By:	Name: MICHAEL DUNKEL (T)	Position/Title: RESOURCE UNIT LEADER	Signature:
ICS 203	IAP Page	Date/Time: 06/20/2016 0758	

FIRE WEATHER FORECAST

FORECAST NO. 14

NAME OF FIRE: Pony Fire

PREDICTION FOR: Tuesday, June 21, 2016

UNIT: CA-KNF

FORECAST ISSUED: 1900 Monday, June 20, 2016

SIGNED: 
Shawn Weagle / Incident Meteorologist

... A FEW DEGREES WARMER AND A BIT DRIER TODAY ...

WEATHER DISCUSSION: Temperatures will heat up a few more degrees today (Tuesday) as a warm ridge of high pressure becomes more dominant across California. A fairly typical diurnal wind pattern will develop for the area, with light to moderate offshore flow during the late night and early morning giving way to locally gusty up-canyon flow each afternoon. A weak disturbance will brush by to our north Wednesday and Thursday, enhancing Westerly ridgetop winds and knocking temperatures back down a couple degrees. Another warm ridge of high pressure is expected to build across the region toward the end of the week, likely bringing another warming and drying trend Friday and Saturday.

TODAY (Tuesday): Sunny, warm, and dry.

	<u>MAX TEMP</u>	<u>MIN RH</u>	<u>20 FOOT WINDS</u>
<i>Ridgetops:</i>	72-77°	15-25%	East-Northeast 5-8 mph with gusts to 15 mph, shifting to West with gusts to 20 mph by 1400.
<i>Drainages:</i>	84-92°	12-20%	Up-canyon 5-9 mph with afternoon gusts 14-18 mph. Winds lighter in shaded drainages.

TRANSPORT WINDS: Northeast 5-10 mph, shifting to Northwest 10-15 mph in the afternoon.

MIXING HEIGHT: 10,000 ft MSL.

LAL: 1.

CHANCE OF WETTING RAIN: 0%.

TONIGHT (Tuesday Night): Mainly clear. Poor to moderate humidity recovery above thermal belts.

	<u>MIN TEMP</u>	<u>MAX RH</u>	<u>20 FOOT WINDS</u>
<i>Midslopes/Ridges:</i>	52-58°	35-50%	North to Northeast 3-7 mph.
<i>Drainage Bottoms:</i>	45-50°	65-85%	Down-drainage 2-6 mph.

STABILITY: Strong but shallow valley inversions developing 500-1,000 feet off drainage bottoms.

TRANSPORT WINDS: Northwest becoming Northeast 5-10 mph.

LAL: 1.

CHANCE OF WETTING RAIN: 0%.

TOMORROW (Wednesday): Mostly sunny. A few high clouds in the afternoon.

	<u>MAX TEMP</u>	<u>MIN RH</u>	<u>20 FOOT WINDS</u>
<i>Ridgetops:</i>	69-74°	20-28%	East 2-6 mph, shifting West and increasing to 8-12 mph with gusts to 25 mph by 1300.
<i>Drainages:</i>	80-88°	16-22%	Up-canyon 5-9 mph with afternoon gusts 14-18 mph. Winds lighter in shaded drainages.

TRANSPORT WINDS: Light and variable early, becoming West-Northwest 12-22 mph in the afternoon.

MIXING HEIGHT: 8,000 ft MSL.

LAL: 1.

CHANCE OF WETTING RAIN: 0%.

OUTLOOK FOR THURSDAY THROUGH SATURDAY:

Thursday: Partly cloudy. Becoming breezy on the ridgetops. Morning lows in the upper 40s and 50s. Ridgetop highs in the mid 60s. Valley highs around 80. Minimum RH 20-30%. General winds West 10-15 mph. Ridgetop gusts 25 mph in the afternoon.

Friday and Saturday: Sunny. Becoming hotter and drier. Ridgetop highs warming into the 70s. Valley highs warming into the lower 90s by Saturday. Minimum RH 10-20%. North-Northeast winds 5-10 mph with ridgetop gusts to 20 mph.

FIRE BEHAVIOR FORECAST

FORECAST NUMBER: 16	TYPE OF FIRE: Wildland Fire
FIRE NAME: Pony Fire	OPERATIONAL PERIOD: June 21, 2016 Day Shift 0600 – 1800
DATE ISSUED: June 20, 2016	TIME ISSUED: 1900
UNIT: Happy Camp R.D. Klamath N.F.	SIGNED: /s/ Teresa Riesenhuber, FBAN-T

INPUTS

WEATHER SUMMARY: ***See attached Fire Weather Forecast***

Discussion: Persistently sunny, warm, and dry. Inversions clearing by 1000 hrs.

Temp: Ridges 72-77° Drainages 84-92° **RH:** Ridges 15-25% Drainages 12-20%

Winds (eye level): Ridges: E-NE 2-4 mph gusts to 10 mph then shifting to West by 1400 hrs
Drainages: Up-canyon 1-4 mph gusts to 8 mph; winds lighter in shaded drainages

Live Fuel Moisture (lower--upper elevations): 120% at 1,000 ft and 135% at 3,000 ft

10 hr fuels: 6% **1000 hr fuels:** 9%

FIRE BEHAVIOR

GENERAL

The fire is 60% contained with the uncontained fingers in Division D accounting for the other 40%. With the warmer drier weather fuels are drying out, even the live fuels at the lower elevations. The greatest threat to containment lines is spotting due to roll-out or burning snags falling across the firelines. Should a spot fire occur expect a slow backing fire but also anticipate the potential for short upslope runs.

Actual 6/20 ERC 44 BI 49 Predicted 6/21 ERC 47 BI 55 POI 80-90% Spotting Potential 1/4 mile
Flame lengths (Head Fire) Open Timber: 2-3 feet Closed Timber w/ Understory: 6-8 feet Brush: 2-5 feet
Rate of Spread (Head Fire) Open Timber: 3-7 ch/hr Closed Timber w/ Understory: 7-12 ch/hr Brush: 10-15 ch/hr
Backing Fire In all Fuels Rate of Spread ≤ 1 ch/hr Flame Lengths ≤ 2 feet

SPECIFIC FIRE BEHAVIOR

Division B: Containment lines have held for several days. Large fuels and pre-heated pockets of brush will continue to be consumed. Keep heads-up for interior snags that may reach the line.

Division C: Containment lines were completed on Sunday. There is still heat close to the line and high potential for spotting from roll-out and falling snags, especially on the southern portion of the Division.

There is still some potential for fire to spot across Swillup Creek. Modeling has shown a slow rate of spread (generally less than 6 chains/hr) should this occur and the most likely location would be near the confluence of no-name creek and Swillup Creek.

Division D: Expect the uncontained portions of the fire to continue backing slowly down slope toward Dillon Creek. There is a high potential for rolling material and burning snags to travel significant distances down slope creating a spot fire that could run back uphill. Watch for fire movement into the Three Creeks drainage as it could compromise completed containment lines in Division D in the future.

Division A, H, I, Z: No fire activity expected.


AIR OPERATIONS

No smoke impacts or visibility issues anticipated. Transport winds at 5-10 mph from the NE, then becoming NW 10-15 mph in the afternoon. Sunrise: 05:39 Sunset: 20:52


SAFETY

After last winter's high precipitation in northern California, it still surprises many that the 1000 hr fuels are so dry (locally 9%). Periods of persistent drought occurring at irregular intervals, often many years apart, can adversely affect both living and dead fuels. The ratio of attached dead twigs and branches will increase. Large logs may become dry enough to burn to a white ash residue.


Division/Group Assignment List (ICS 204 WF)

1. Incident Name:			3.			
PONY			Branch:		Division/Group: B	
2. Operational Period: DAY						
Date/Time From: 06/21/2016 0600 TUE		Date/Time To: 06/21/2016 1800 TUE				
4. Operations Personnel						
OPERATIONS CHIEF		SCOTT LUCAS O-51.27 TERRY WALTERS O-27 (T)		BRANCH DIRECTOR		
DIVISION/GROUP SUPERVISOR		HEATHER GROVE O-51.13 ISAAC FLATTLEY O-119 (T)		AIR OPERATIONS BRANCH DIRECTOR		
				DENNIS KUSTER O-51.7		
5. Resources Assigned this Period						
Strike Team / Task Force / Resource Designator		LWD	Leader	Number Persons	Drop Off PT./Time	Pick Up PT./Time
HCMI-FUM KNF O-227		06/25	WILL JOHNSON	8	DP 10/0700	1800/
ENGINE3- 363 E-97		06/25	MICHAEL PAUL LOEFFLER	5	DP 10/0700	1800/
DOZ2- KNF E-114		06/26	MURIEEN/ TUPMAN	2	DP 10/0700	1800/
SOF2- O-7		06/23	CHRIS CHURCH	1	DP 10/0700	1800/
FEMP- O-197		06/26	ERIK RUBALCAVA	1	DP 10/0700	1800/
FEMP- O-196		06/26	ZAC FLECKNER	1	DP 10/0700	1800/
CULS- O-43		06/24	BEN SAXON	1	DP 10/0700	1800/
6. Control Operations/Work Assignments:						
<ul style="list-style-type: none"> • Patrol, hold and improve existing containment line. • Mop-up to the extent necessary to maintain containment, without compromising safety. 						
7. Special Instructions:						
<ul style="list-style-type: none"> • Backhaul any unnecessary supplies. 						
8. Division/Group Communication Summary						
Function	Channel	RX Frequency N/W	RX Tone/NAC	TX Frequency N/W	TX Tone/NAC	Mode
COMMAND	1	168.7000 N		170.9750 N	110.9	A
TACTICAL	6	168.6000 N		168.6000 N		A
AIR TO GROUND CMD	13	167.9500 N		167.9500 N		A
AIR TO GROUND TAC	14	166.6750 N		166.6750 N		A
9. Prepared By (Resource Unit Leader)			Approved By (Planning Section Chief)		Date	Time
MICHAEL DUNKEL			JOHN OWEN (T) 		06/20/2016	0758


Division/Group Assignment List (ICS 204 WF)

1. Incident Name:			3.			
PONY			Branch:		Division/Group:	
2. Operational Period: DAY					C 1 OF 2	
Date/Time From: 06/21/2016 0600 TUE	Date/Time To: 06/21/2016 1800 TUE					
4. Operations Personnel						
OPERATIONS CHIEF		SCOTT LUCAS O-51.27 TERRY WALTERS O-27 (T)		BRANCH DIRECTOR		
DIVISION/GROUP SUPERVISOR		GORDON MEYER O-28 BRIAN BATES O-187 (T)		AIR OPERATIONS BRANCH DIRECTOR		DENNIS KUSTER O-51.7
5. Resources Assigned this Period						
Strike Team / Task Force / Resource Designator		LWD	Leader	Number Persons	Drop Off PT./Time	Pick Up PT./Time
HC1-TALLAC C-7		06/21	KYLE BETTY	19	DP 38/0700	RETURN TO ICP/1600
HC2I HAPPY CAMP CREW2 C-29		06/25	DAMON W MCCARTNEY	17	DP 38/0700	/1800
HC2 CREW 506		06/20	JOHN WORSLEY	17	DP 38/0700	/1800
HC2I TRINITY C-31		06/30	AARON UTTERBACK	18	DP 38/0700	/1800
HC2 CREW 514		07/01	GABE HERRERA	17	DP 38/0700	/1800
CHIP- ZEB'S E-52		07/03	KYLE ARMIJO	1	DP 38/0700	/1800
CHIP- ZEB'S E-53		06/24	DOUG STAFF	1	DP 38/0700	/1800
FALM- NORTH ZONE O-175		06/24	JEREMY MASON	1	DP 38/0700	/1800
FALM- MILLER WOOD O-207		06/26	BARNEY / KNOTT	2	DP 38/0700	/1800
6. Control Operations/Work Assignments:						
<ul style="list-style-type: none"> Monitor, hold fire in the Swillup Creek. Secure and hold completed line. Mop-up to the extent necessary to maintain containment, without compromising safety. 						
7. Special Instructions:						
<ul style="list-style-type: none"> Backhaul any unnecessary supplies. Initiation of demob is stated in pick up time. 						
8. Division/Group Communication Summary						
Function	Channel	RX Frequency N/W	RX Tone/NAC	TX Frequency N/W	TX Tone/NAC	Mode
COMMAND	1	168.7000 N		170.9750 N	110.9	A
TACTICAL	7	166.7250 N		166.7250 N		A
AIR TO GROUND CMD	13	167.9500 N		167.9500 N		A
AIR TO GROUND TAC	14	166.6750 N		166.6750 N		A
9. Prepared By (Resource Unit Leader)			Approved By (Planning Section Chief)		Date	Time
MICHAEL DUNKEL (T)			JOHN OWEN (T) 		06/20/2016	0758

Division/Group Assignment List (ICS 204 WF)

1. Incident Name:			3.			
PONY			Branch:		Division/Group:	
2. Operational Period: DAY					C 2 OF 2	
Date/Time From: 06/21/2016 0600 TUE	Date/Time To: 06/21/2016 1800 TUE					
4. Operations Personnel						
OPERATIONS CHIEF	SCOTT LUCAS O-51.27 TERRY WALTERS O-27 (T)		BRANCH DIRECTOR			
DIVISION/GROUP SUPERVISOR	GORDON MEYER O-28 BRIAN BATES O-187 (T)		AIR OPERATIONS BRANCH DIRECTOR		DENNIS KUSTER O-51.7	
5. Resources Assigned this Period						
Strike Team / Task Force / Resource Designator	LWD	Leader	Number Persons	Drop Off PT./Time	Pick Up PT./Time	
FELB- O-216	06/25	ANDREW BRANSON	1	DP 38/0700	/1800	
SOFR O-9	06/21	JOHN MARTINEZ	1	DP 38/0700	/1800	
FEMP O-195	06/26	KEITH QUIGLEY	1	DP 38/0700		
FEMP O-49	06/23	DYLAN YUZBICK	1	DP 38/0700		
REAF O-222	06/27	HARRY MCQUILLEN	1	DP 38/0700	/1800	
READ O-116	06/27	SEAN KELLY	1	DP 38/0700	/1800	
6. Control Operations/Work Assignments:						
<ul style="list-style-type: none"> Monitor, hold fire in the Swillup Creek. Secure and hold completed line. Mop-up to the extent necessary to maintain containment, without compromising safety. 						
7. Special Instructions:						
<ul style="list-style-type: none"> Backhaul any unnecessary supplies. Initiation of demob is stated in pick up time 						
8. Division/Group Communication Summary						
Function	Channel	RX Frequency N/W	RX Tone/NAC	TX Frequency N/W	TX Tone/NAC	Mode
COMMAND	1	168.7000 N		170.9750 N	110.9	A
TACTICAL	7	166.7250 N		166.7250 N		A
AIR TO GROUND CMD	13	167.9500 N		167.9500 N		A
AIR TO GROUND TAC	14	166.6750 N		166.6750 N		A
9. Prepared By (Resource Unit Leader)		Approved By (Planning Section Chief)		Date	Time	
MICHAEL DUNKEL (T)		JOHN OWEN (T) 		06/20/2016	0758	

Division/Group Assignment List (ICS 204 WF)

1. Incident Name:			3.			
PONY			Branch:		Division/Group:	
2. Operational Period: DAY					D 1 OF 2	
Date/Time From: 06/21/2016 0600 TUE	Date/Time To: 06/21/2016 1800 TUE					
4. Operations Personnel						
OPERATIONS CHIEF		SCOTT LUCAS O-51.27 TERRY WALTERS O-27 (T)		BRANCH DIRECTOR		
DIVISION/GROUP SUPERVISOR		MARK JOHNSON O-51.14 MATT WELDON O-102 (T)		AIR OPERATIONS BRANCH DIRECTOR		
5. Resources Assigned this Period						
Strike Team / Task Force / Resource Designator		LWD	Leader	Number Persons	Drop Off PT./Time	Pick Up PT./Time
HC1 TAHOE IHC C-8		06/21	ERIC RICE	21	DP 38/0700	RETURN TO ICP/1500
HC1 BAKER RIVER C-13		06/21	KURT RANTA	20	DP 38/0700	RETURN TO ICP/1600
HC1 MENDOCINO IHC C-4		06/22	CHRISTOPHER R MARKEY	18	DP 38/0700	RETURN TO ICP/1700
HC1 MODOC IHC C-1		06/21	WILLY ALMAND	19	DP 38/0700	RETURN TO ICP /1800
HC1 DIAMOND MOUNTAIN IHC C-32		06/30	DAN VARNEY	21	DP 38/0700	/1800
HC2I FOLSOM LAKE C-30		07/01	JASON RYAN SCHROEDER	20	DP 38/0700	/1800
ENGINE3 - 3631C E-113		07/01	JOHN TOOMEY	25	DP 38/0700	/1800
WTT2 KNF 21 E-74		06/23	ROMAN S DOBRATZ	2	DP 38/0700	/1800
SOF2- O-12		06/25	DAVID HADE	1	DP 38 /0700	/1800
FEMT- O-198		06/26	THOMAS ZAMORA	1	DP 38/0700	/1800
FEMP- O-178		06/25	ERIC KENNEDY	1	DP 38/0700	/1800
6. Control Operations/Work Assignments:						
<ul style="list-style-type: none"> Secure and hold completed fireline. Mop-up to the extent necessary to maintain containment, without compromising safety. 						
7. Special Instructions:						
<ul style="list-style-type: none"> Backhaul any unnecessary supplies. Initiation of demob is stated in pick up time 						
8. Division/Group Communication Summary						
Function	Channel	RX Frequency N/W	RX Tone/NAC	TX Frequency N/W	TX Tone/NAC	Mode
COMMAND	1	168.7000 N		170.9750 N	110.9	A
TACTICAL	8	166.7750 N		166.7750 N		A
AIR TO GROUND CMD	13	167.9500 N		167.9500 N		A
AIR TO GROUND TAC	14	166.6750 N		166.6750 N		A
9. Prepared By (Resource Unit Leader)		Approved By (Planning Section Chief)		Date	Time	
MICHAEL DUNKEL (T)		JOHN OWEN (T) 		06/20/2016	0758	

Division/Group Assignment List (ICS 204 WF)

1. Incident Name:		3.				
PONY		Branch:	D 2 OF 2			
2. Operational Period: DAY						
Date/Time From: 06/21/2016 0600 TUE	Date/Time To: 06/21/2016 1800 TUE					
4. Operations Personnel						
OPERATIONS CHIEF	SCOTT LUCAS O-51.27 TERRY WALTERS O-27 (T)	BRANCH DIRECTOR				
DIVISION/GROUP SUPERVISOR	MARK JOHNSON O-51.14 MATT WELDON O-102 (T)	AIR OPERATION BRANCH DIRECTOR		DENNIS KUSTER O-51.7		
5. Resources Assigned this Period						
Strike Team / Task Force / Resource Designator	LWD	Leader	Number Persons	Drop Off PT./Time	Pick Up PT./Time	
FOBS- O-61	06/23	TROY MAGUIRE	1	DP 38/0700	/1800	
ARCH- O-233	07/01	JASON NEZ	1	DP 38/0700	/1800	
REAF- O-173	07/21	DAVID BOWDEN	1	DP 38/0700	/1800	
REAF- O-223	06/29	STACY MANSON	1	DP 38/0700	/1800	
6. Control Operations/Work Assignments:						
<ul style="list-style-type: none"> Secure and hold completed fireline. Mop-up to the extent necessary to maintain containment, without compromising safety. 						
7. Special Instructions:						
<ul style="list-style-type: none"> Backhaul any unnecessary supplies. Initiation of demob is stated in pick up time . 						
8. Division/Group Communication Summary						
Function	Channel	RX Frequency N/W	RX Tone/NAC	TX Frequency N/W	TX Tone/NAC	Mode
COMMAND	1	168.7000 N		170.9750 N	110.9	A
TACTICAL	8	166.7750 N		166.7750 N		A
AIR TO GROUND CMD	13	167.9500 N		167.9500 N		A
AIR TO GROUND TAC	14	166.6750 N		166.6750 N		A
9. Prepared By (Resource Unit Leader)		Approved By (Planning Section Chief)		Date	Time	
MICHAEL DUNKEL (T)		JOHN OWEN (T)		06/20/2016	0758	

AIR OPERATIONS SUMMARY

Prepared By: Dennis Kuster

Prepared Date 6/20/2016

Prepared Time: 21:00

1. INCIDENT NAME: Pony Fire	2. OPS PERIOD DATE: 6/21/2016	START TIME: 0700	END TIME: 2100	SUNRISE: 0539	SUNSET: 2052
3. REMARKS (Safety Notes, Hazards, Air Operations, Special Equipment, etc.): Possible low wires & cables in river canyon. Independence Check Point 41° 39.57 x 123° 26.96 Dillon Check Point 41° 34.35 x 123° 32.30 Slippery Check Point 41° 41.847 x 123° 33.426 Stay a minimum of ¼ mile from spotted owl nest shown on ops map. Avoid using Cottage Dip 6/18-23					
4. READY ALERT AIRCRAFT MEDEVAC- H 408 I.A. - H 503			5. TFR #: 6/7128 A-27 Radius 5NM Altitude 10,000 AGL Freq. 118.0250 Center Point 41° 37.11 123° 33.185		

6. PERSONNEL NAME		PHONE #	7. FREQUENCIES		AM	FM	8. FIXED-WING- Type/ Make-Model/ N#/ Base	
AOBD	Dennis Kuster	209-352-0855	AIR/ AIR FW		118.0250	169.2000	AIRTANKERS -	Ordered by ATGS
ASGS	Staci Dickson	530-277-5153	AIR/ AIR RW		118.5750		LEAD PLANES-	Ordered by ATGS
ATGS	Jim Gould	530-598-4132	AIR/ AIR RW- FF				No Air Attack assigned. Call air Ops to request AA.	
HEB1 (T)	Mario Gomez	530-598-4120	A/G Command			167.9500	KNF ECC Aircraft Dispatcher 530-841-4600	
HEB1	Glen Dietz	530-739-5594	A/G Tactical			166.6750	Siskiyou Tanker Base 530-459-5116/5453	
HEB2			COMMAND Rx		See Comm. plan		OTHER FW AIRCRAFT-	
Helibase	Happy Camp	530-493-1779	DECK			163.100	Water Tender E-20	
Helibase			TOLC			169.4000		
Air Ops Desk		530-493-1521						

9. HELICOPTERS (Use Additional Sheets as Necessary)

FAA N#	TY	MAKE/ MODEL	BASE	AVAIL	START	REMARKS	FAA N#	TY	MAKE/ MODEL	BASE	AVAIL	START	REMARKS
503	3	Bell407	Happy Camp	0800									
506	2	Bell 205A1++	Happy Camp	0800									
408	2	Bell 205A1++	Happy Camp	12 hour		w/Hoist							
HT 703	1	Sikorsky S61	Happy Camp	0800									
514	2	Bell 212HP	Happy Camp	0800									

10. TASK/ MISSION/ ASSIGNMENT (Type/ function includes: Air Tactical, Retardant, Recon, Personnel Transport, Bucket Operations, SAR, etc.)		MISSION START	FLY FROM	FLY TO
Water Dropping	NAME OF PERSONNEL OR CARGO (if applicable) or instructions for tactical aircraft	As Needed		
Recon		As needed		

Attachment to ICS 220 for Helicopter 408

Once the need for the use of the medivac helicopter is established the IC on scene will contact Pony Communications on command to order H408. All necessary information will be given to communication using the Nine Line in the IAP.

Communications will then contact the Crew Supervisor of H408 to order the helicopter and relay all information.

Helicopter will flight follow with Pony Communications on command until on scene. Once on scene all resources involved then switch over to Calcord.

When the helicopter is departing the scene they will flight follow with Pony Communications on command.

If the Pony Command frequency does not work for flight following; flight following will be done on KNF Orange.

INCIDENT RISK ANALYSIS (ICS 215A) Day

DIV	HAZARDOUS ACTIONS / CONDITIONS	MITIGATIONS / WARNINGS / REMEDIES
ALL	DANGER TREES	<ul style="list-style-type: none"> Follow "Hazard Tree Safety" guidelines, IRPG pages 22. Post lookouts, or use a spotter in mop-up areas with personnel. Don't park vehicles or take breaks in high concentrations of hazard trees. Establish trigger points for disengagement during high wind events".
ALL	CHAIN SAW OPERATIONS	<ul style="list-style-type: none"> Follow "Hazard Tree Safety" guidelines, IRPG page 22 Look up, Look down, Look around for hazard tree indicators. Only fell and buck trees within your expertise, and training. Follow "Procedural Felling Operations" on page 79 in IRPG. Do not fall trees during high wind events. Ensure proper use of all required PPE."
ALL	TRAFFIC & DRIVING	<ul style="list-style-type: none"> Watch for slick roads, poor traction, and poor braking conditions. Always use headlights. Use warning lights when working on roads or traveling in smoke. Observe posted speed limits. Use chock blocks, turn wheels into hill. Many roads are narrow and mid slope, use caution. Use backers Weekend, Increased traffic on highway 96
ALL	LINE CONSTRUCTION	<ul style="list-style-type: none"> Conduct thorough briefing for all personnel (inside rear cover IRPG). Ensure LCES in place prior to engagement (IRPG p. 7). Adhere to 10 Std. Orders, mitigate 18 Situations. Use Downhill Line Checklist (IRPG p. 9). Utilize Risk Management Process (IRPG p.1).
ALL	DRY FUEL CONDITIONS	<ul style="list-style-type: none"> Establish and maintain LCES Anticipate intense burning and rapid rates of spread Watch for spot fires Allow for adequate time to escape routes and safety zones
ALL	MOP UP	<ul style="list-style-type: none"> Use all required PPE, including eye protection. Maintain proper spacing and overhead clearance. Be alert for stump holes and root cavities. Minimize exposure to smoke, and rotate personnel into clean air when practical. Evaluate unburned islands/Increase situational awareness
ALL	HEAT RELATED ILLNESS (HRI) & DEHYDRATION	<ul style="list-style-type: none"> Drink 2 to 1 water to sports drinks. Take Frequent breaks, minimum of 10 minutes every hour. Recognize symptoms of HEAT RELATED ILLNESS which include Lack of energy, Headaches, dizziness, lack of rest, no hunger, poor eating habits, hot skin, and lack of sweating
ALL	ENVIRONMENTAL HAZARDS	<ul style="list-style-type: none"> Keep alert for wildlife, rattlesnakes, insects, and plants. Watch footing and hand placement around rocks. Personal hygiene is #1 when it comes to Poison Oak Prevention.
ALL	INDIRECT LINE CONSTRUCTION	<ul style="list-style-type: none"> Establish and maintain LCES. Locate line in favorable location, lighter fuels and gentler topography when possible. Utilize natural or existing barriers.
DIV C	CHIPPER OPERATIONS	<ul style="list-style-type: none"> Ensure JHA is provided and signed by operators. Only qualified personnel will feed the chipper. Ensure appropriate PPE is used including eye and hearing protection.
INCIDENT NAME Pony ICS 215a		DATE PREPARED: <p style="text-align: center;">June 20, 2016</p> TIME PREPARED: 1400 HOURS
		OPERATIONAL PERIOD Day Shift 06/21/16 0600-1800 Prepared by T. OConnell/Frank Pingiczer

Lookouts Communications Escape Routes Safety Zones	Pony Operation Period: 06/21/2016 Day Shift
	SAFETY MESSAGE

WHAT IS THE PROBABILITY OF SUCCESS?

- When you are developing your tactical plan honestly weigh the probability of successfully completing your objectives.
- Do you have the time, resources, logistical support, and supervision needed for the assignment?
- Do you have all elements of your safety plan in place?
- Are the risks associated with the assignment worth the gain?
- When your probability of success falls below 75% it should be a red flag to consider an alternative plan.

MAJOR HAZARDS AND RISKS

STEEP TERRAIN FATIGUE SPOT FIRES	ROLLING MATERIAL DEHYDRATION DRIVING	HEAVY EQUIPMENT HAZARD TREES COMPLACENCY
--	--	--

Be sure all elements of your safety plan are in place prior to engagement

**Look Up, Look Down,
Look Around During Mop Up**

***Look Up:** Check the sky for any weather changes such as building or approaching thunderstorms, wind shifts or increasing in speed. Watch for air operations and water drops. Look for snags and the potential for rolling material.

***Look Down:** Watch your footing. Keep an eye out for snakes, bee's nests, Stump holes, and ash pits.

*** Look Around** Check for flagging identifying hazards in the area, and general terrain features. Keep an eye on fellow firefighters for signs of heat stress and fatigue.

Driving Rules

- Keep your seat belt on!
- Keep your eyes on the road!
- Keep your speed down!
- 20 MPH on the pavement
- 15 MPH maximum off pavement
- Uphill traffic yields to downhill traffic
- Reduce speed on the narrow sections of the road and on turns with poor sight lines
- Park well off of the road

MEDICAL PLAN	1. INCIDENT NAME PONY	2. DATE PREPARED 06/20/2016	3. TIME PREPARED 1900	4. OPERATIONAL PERIOD 06/21/2016 0600-1800				
5. INCIDENT MEDICAL AID STATIONS								
MEDICAL AID STATIONS	LOCATION			PARAMEDICS YES NO				
Medical Unit	Base Camp			XX				
Mountain Medical	Base Camp			XX				
FEMP Fleckner and FEMP Rubalcava	Division "B"			XX				
FEMP Yuzbick and FEMP Quigley	Division "C"			XX				
FEMP Zamara and FEMP Kennedy	Division "D"			XX				
6. TRANSPORTATION								
A. AIR RESOURCES								
NAME	LOCATION	PHONE	PARAMEDICS YES NO					
Mercy Flights Air Ambulance	Medford, Oregon	911	XX					
Kern County 408	Happy Camp HeliBase	Pony Comms	XX					
B. INCIDENT AMBULANCES								
NAME	LOCATION	PARAMEDICS YES NO						
Mountain Medics Ambulance	Dry Lake Staging	XX						
Happy Camp Vol. Ambulance	Happy Camp, Ca.	XX	XX					
Mt. Shasta Ambulance	Yreka, Ca.	XX						
7. HOSPITALS								
NAME	ADDRESS	TRAVEL TIME		PHONE	HELIPAD		BURN CENTER	
		AIR	GRND		YES	NO	YES	NO
Fairchild Medical Center	4444 Bruce St. Yreka, Ca. N. 41 43.13 x W 122 38.69	10 Min	1 hour 20 Min	530-841-6259	XX			XX
Karuk Community Health Clinic	64236 2 nd Ave Happy Camp Ca.		10 Min	530-493-5257		XX		XX
Ashland Community Hospital	280 Maple St Ashland Or.		1.5 Hours	541-201-4000		XX		XX
Providence Medical Center	1111 Crater Lake Rd. Medford, Or	15 Min	1.5 Hours	541-732-5000	XX			XX
Rogue Valley Medical Center Level 2 Trauma	2825 Barnett Rd. Medford, Or N 42 19.08 x W 122 49.91	15 Min	1.5 Hours	541-608-4900	XX			XX
U.C. Davis Medical Center Level 1 Trauma	2015 Stockton Ave Sacramento, Ca. N 38 33.3 x W 121 27.3	1 Hour	5 Hours	916-734-2011	XX		XX	
8. MEDICAL EMERGENCY PROCEDURES								
IN-CAMP CARE			LINE EMERGENCIES					
<ul style="list-style-type: none"> Minor Injuries or illnesses <ul style="list-style-type: none"> Seek Aid directly at Medical Unit, report all injuries or illnesses to supervisor Unit Open 0600 hrs to 2200 hrs Moderate to Severe Injuries or Illnesses <ul style="list-style-type: none"> Contact Communications directly Med Unit staffed after hours for Emergencies 			<ul style="list-style-type: none"> Start of shift: notify your Div Sup of EMT's/Paramedic's and Medical gear carried by crew Crew Supervisor contacts Division with Nature of Emergency. Division Supervisor contact's Communications and declare a medical emergency on command Closest DIVS or designee responds to incident <ul style="list-style-type: none"> Closest SOFR/EMT's respond to assist w/care Use attached Injury or Incident Comm. Protocol If ambulance (ground or air) delayed designate rendezvous site and move towards it Secure scene for investigation—keep a log 					
9. PREPARED BY (MEDICAL UNIT LEADER) Patrick Young MEDL			10. REVIEWED BY (SAFETY OFFICER) Terry O'Connell SOF-2					
ICS 206 8-78								

FOR ALL MEDICAL EMERGENCIES: IDENTIFY ON SCENE INCIDENT COMMANDER BY NAME AND POSITION AND ANNOUNCE "MEDICAL EMERGENCY" TO INITIATE RESPONSE FROM IMT COMMUNICATIONS/DISPATCH.

INCIDENT RADIO COMMUNICATIONS PLAN (ICS 205)

1. Incident Name:	2. Date/Time Prepared:		3. Operational Period: DAY	
PONY	Date: 06/20/2016	Date/Time From: 06/21/2016 0600	Date/Time To: 06/21/2016 1800	
	Time: 0758		TUE	TUE

4. Basic Radio Channel Use:										
Zone Group	Ch #	Function	Channel Name/Trunked Radio System Talkgroup	Assignment	RX Freq	RX Tone/NAC	TX Freq	TX Tone/NAC	Mode (A, D, or M)	Remarks
	1	COMMAND	NIFC C1	CMD	168.7000 N		170.9750 N	110.9	A	Tone 1 UKONOM MT link to C8
	2	COMMAND	NIFC C8	CMD	169.5375 N		164.7125 N	110.9		BALDY LO LINK TO C1
	3	COMMAND		UNASSIGNED	000.0000		000.0000		A	
	4	TACTICAL	NIFC T1	DIV A	168.0500 N		168.0500 N		A	Unstaffed
	5	TACTICAL	NIFC T2	DILLON IA	168.2000 N		168.2000 N		A	Dillon Unstaffed
	6	TACTICAL	NIFC T3	DIV B	168.6000 N		168.6000 N		A	
	7	TACTICAL	NIFC T5	DIV C	166.7250 N		166.7250 N		A	
	8	TACTICAL	NIFC T6	DIV D	166.7750 N		166.7750 N		A	
	9	TACTICAL	NIFC T7	DIV H	168.2500 N		168.2500 N		A	Unstaffed
	10	TACTICAL	ROAD CONTROL	ALL DIV	168.3500 N		168.3500 N		A	FOR ROAD CONTROL ONLY
	11	TACTICAL	R5 T4	DIV I / ZI STAGING	166.5500 N		166.5500 N		A	Unstaffed
	12	COMMAND	ALT CMD	ALL DIV	172.2750 N		164.7000 N	136.5	A	Tone 4 UKONOM MT
	13	AIR TO GROUND	A/G CMD	ALL DIV	167.9500 N		167.9500 N		A	
	14	AIR TO GROUND	A/G TAC	ALL DIV	166.6750 N		166.6750 N		A	
	15	TACTICAL	CALCORD	ALL DIV	156.0750 N	156.7	156.0750 N	156.7	A	MEDICAL EVAC - TONE 6
	16	AIR GUARD	GUARD	ALL DIV	168.6250 N		168.6250 N	110.9	A	AIR GUARD-EMERG. USE ONLY-Tone 1

5. Special Instructions:
 Road group to use the tactical frequency assigned to the division they are working in

6. Prepared By (Communications Unit Leader)	Name: DON STONER
Signature: 	Date/Time: 06/20/2016 0758
ICS 205	IAP Page

TRAINING MESSAGE

LAST DAY TO CLOSE OUT IS TODAY 6/21/2016 @2200

ALL trainees need to close out with the Training Specialist for the TYPE 2 Incident.

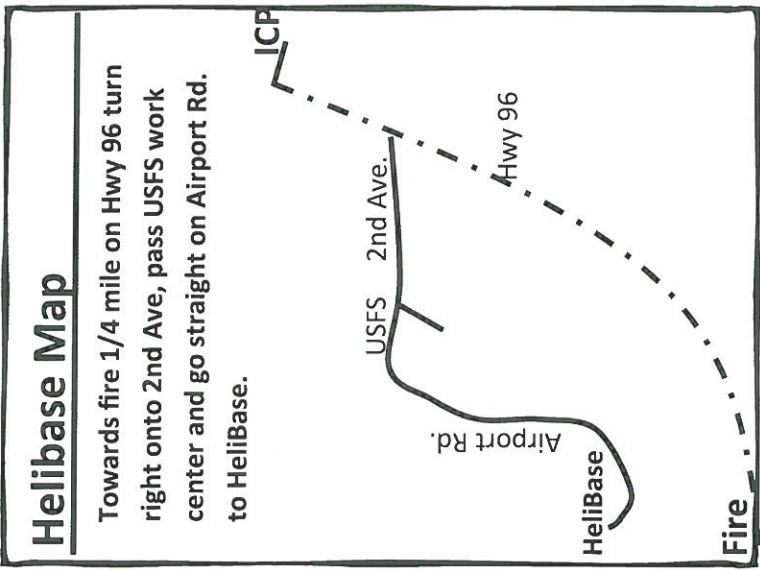
- Bring a completed and signed ICS 225 or 226 Performance Evaluation
- A completed Exit Interview Form
- Position Task Book

*****All trainees continuing their assignments with the Type 3 team will be done inter-crew. All blank forms needed are available at the training trailer*****

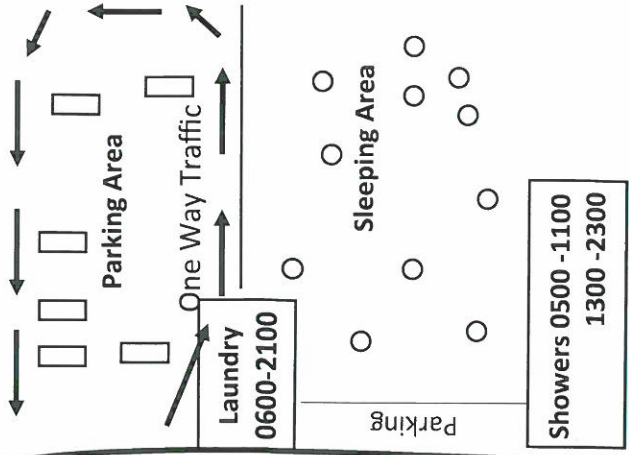
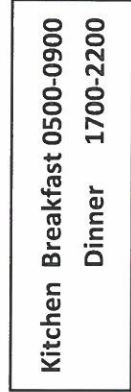
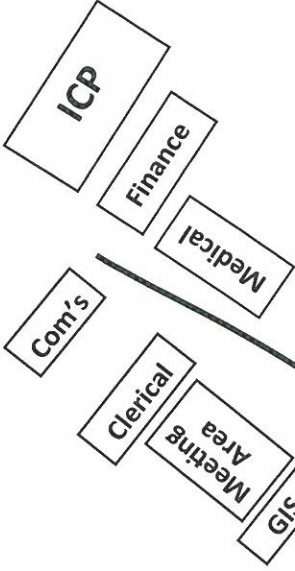
Fire ← - - - - - Hwy 96 - - - - - → Engine / Tender Draft Site:
 Turn right out of camp about 1 mile; Right at sign / pink flagging off Hwy 96 and take dirt road to Klamath River

Incident Base Camp Map

Hwy 96 - - - - - → Engine / Tender Draft Site:
 Turn right out of camp about 1 mile; Right at sign / pink flagging off Hwy 96 and take dirt road to Klamath River



Park Way Rd

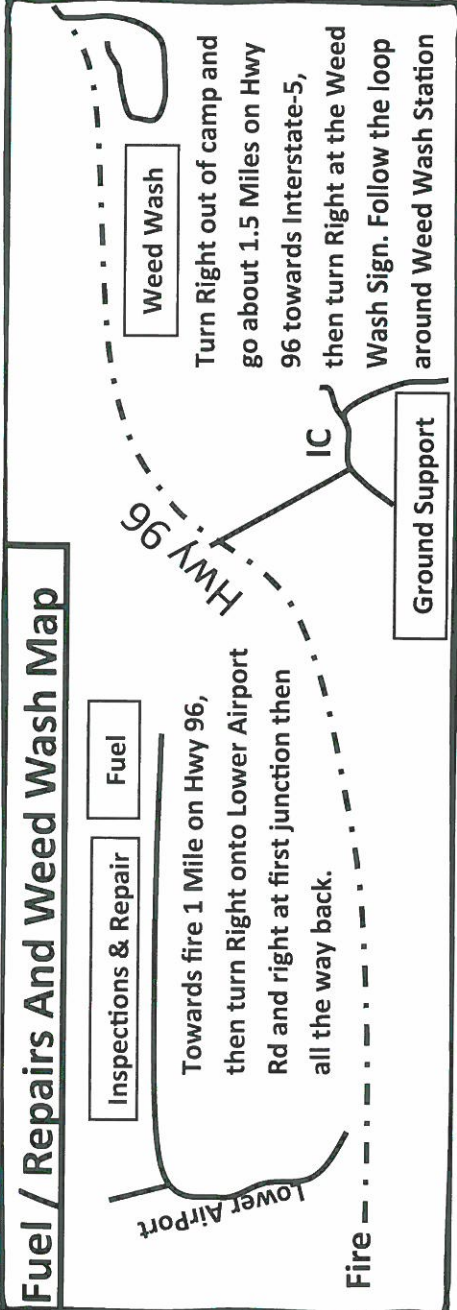


Lunches 24/7

Supply Unit
 0600-2200

North Zone
 Saw Shop

Ground Support



Day Sleeping
 Parking

NorCal 2 Division Fireline Order Form

Date & Time Order was placed	Order # (DIVS + #)	MODE OF DELIVERY	LOCATION OF Delivery
Current Date and Time:		GROUND SUPPORT	DIV, DP, LZ Lat Long
DATE NEEDED:		PICK UP IN SUPPLY	
TIME NEEDED:		HELO	

Order received in COMMUNICATIONS by:	Name:	Time:
Order Received in SUPPLY by:	Name:	Time:
Order shipped by Transportation or PU in Supply:	Name:	Time:

PLEASE ORDER BY ITEM NUMBER

#	Item 1 - IS the following: (i.e. if you need 3000' of hose & appliances, = 3 Hose Kit A's" or 3 item # 1's				
1	'1,000 Foot Hose Lay' and includes:				
	10ro 1½" Hose; 10ro 1" Hose; 10ea 1½" Gated Wyes; 10ea 1½" to 1" reducers; 10ea 1" nozzles				
#	Item	Amount	#	Item	Amount
1	Hose Kit A				
2	Hose (100'), 1½"		28	Fuses (Boxes or Cases?)	
3	Hose (100'), 1"		29	Batteries "AA" PKGs (24/PKG)/BX	
4	Hose (50') garden, ¾"		30	Ribbon, Flagging (Specify Color)	
5	Nozzle, KK Type, 1½"		31	Shovel	
6	Nozzle, KK Type, 1"		32	Pulaski	
7	Nozzle, Forester, 1"		33	Combi Tool	
8	Nozzle, Garden, ¾"		34	McCloud	
9	Wye, Gated, 1½"		35	Washcloth, waterless, cleansing	
10	Wye, Gated, 1"		36	Sprinkler Kit	
11	Wye, Gated, ¾"		37	Mop-Up Kit, 3-Wand	
12	Inline-Tee, (1½" x 1")		38	Chainsaw Kit / {accountability #}	
13	Reducer, 1½"x 1"		39	Water, Cubies	
14	Reducer, 1"x ¾"		40	Water, Bottled, Cases	
15	Shut Off ¾"		41	Gatorade, Cases	
16	Foam 5 gal		42	MRE's (12/BX)	
17	Backpack Pump			ANYTHING NOT LISTED ABOVE:	
18	Pumpkin 1500 / 3000 / 6000 gal order size				
19	Folding-Tank 1000 / 1500 gal order size				
	<u>PUMP KITS</u>				
20	Lightweight / {accountability #}				
21	Mark III / {accountability #}				
22	Fuel Unleaded (5 Gal cans)			ACCOUNTABILITY PROPERTY #'S HERE:	
23	Fuel Drip Torch (5 gal cans)				
24	Fuel Diesel (5 gal cans)				
25	2 Cycle oil (Pints)				
26	Bar Oil (Qts)				
27	Drip Torch (ea)				

SPECIAL NOTES:

Use items one through nine to communicate situation to communications/dispatch.

1. CONTACT COMMUNICATIONS/DISPATCH

Ex: "Communications, Div. Alpha. Stand-by for Priority Medical Incident Report." (If life threatening request designated frequency be cleared for emergency traffic.)

2. INCIDENT STATUS: Provide incident summary and command structure.

Nature of Injury/Illness		Describe the injury (Ex: Broken leg with bleeding)
Incident Name		Geographic Name + "Medical" (Ex: Trout Meadow Medical)
Incident Commander		Name of IC
Patient Care		Name of Care Provider (Ex: EMT Smith)

3. INITIAL PATIENT ASSESSMENT: Complete this section for each patient. This is only a brief, initial assessment. Provide additional patient info after completing this 9 Line Report.

Number of Patients:	Male / Female	Age:.	Weight:.
Conscious? <input type="checkbox"/> YES <input type="checkbox"/> NO = MEDEVAC!			
Breathing? <input type="checkbox"/> YES <input type="checkbox"/> NO = MEDEVAC!			
Mechanism of Injury: What caused the injury?			
Lat/Long (Datum WGS84) Ex: N 40° 42.45' x W 123° 03.24'			

4. SEVERITY OF EMERGENCY, TRANSPORT PRIORITY

SEVERITY	TRANSPORT PRIORITY
<input type="checkbox"/> URGENT-RED Life threatening injury or illness. Ex: Unconscious, difficulty breathing, bleeding severely, 2° – 3° burns more than 4 palm sizes, heat stroke, disoriented.	Ambulance or MEDEVAC helicopter. Evacuation need is IMMEDIATE.
<input type="checkbox"/> PRIORITY-YELLOW Serious Injury or illness. Ex: Significant trauma, not able to walk, 2° – 3° burns not more than 1-2 palm sizes.	Ambulance or consider air transport if at remote location. Evacuation may be DELAYED.
<input type="checkbox"/> ROUTINE-GREEN Not a life threatening injury or illness. Ex: Sprains, strains, minor heat-related illness.	Non-Emergency. Evacuation considered Routine of Convenience.

5. TRANSPORT PLAN:

Air Transport: (Agency Aircraft Preferred)

<input type="checkbox"/> Helispot	<input type="checkbox"/> Short-haul/Hoist	<input type="checkbox"/> Life Flight	<input type="checkbox"/> Other
-----------------------------------	---	--------------------------------------	--------------------------------

Ground Transport:

<input type="checkbox"/> Self-Extract	<input type="checkbox"/> Carry-Out	<input type="checkbox"/> Ambulance	<input type="checkbox"/> Other
---------------------------------------	------------------------------------	------------------------------------	--------------------------------

6. ADDITIONAL RESOURCE/EQUIPMENT NEEDS:

<input type="checkbox"/> Paramedic/EMT(s)	<input type="checkbox"/> Crew(s)	<input type="checkbox"/> SKED/Backboard/C-Collar
<input type="checkbox"/> Burn Sheet(s)	<input type="checkbox"/> Oxygen	<input type="checkbox"/> Trauma Bag
<input type="checkbox"/> Medication(s)	<input type="checkbox"/> IV/Fluid(s)	<input type="checkbox"/> Cardiac Monitor/AED
<input type="checkbox"/> Other (i.e. splints, rope rescue, wheeled litter)		

8. EVACUATION LOCATION:

Lat/Long (Datum WGS84) EX: N 40 42.45' x W 123 03.24'	
Patient's ETA to Evacuation Location:	
Helispot/Extraction Size and Hazards:	

9. CONTINGENCY: