



Salmon August Complex



On Saturday, September 2nd 2017, Etna local's Matt and Amanda Eastlick demonstrated their unwavering love and commitment to one another by exchanging vows on the Etna Summit in the midst of explosive fire conditions. On this day, an Excessive Heat Warning was in effect with 102° temps, 10% relative humidity, 15 mph winds, and the Wallow Fire ravaged an additional 15,672 acres nearby. We wish them both good fortune and long, healthy lives together.

Incident Action Plan

Thursday, September 7, 2017

0700-0700

CA-KNF-006081

P5K9N2/0505



Avenza Map Products



INCIDENT OBJECTIVES	Incident Name Salmon August Complex	Date 09/06/2017	Time 2100
----------------------------	---	---------------------------	---------------------

Operational Period
Thursday 09/07/2017 0700 to Friday 09/08/2017 0700

General Control Objectives for the Incident (include alternatives)

LEADERS INTENT:

The highest priority will be focused on minimizing risk to firefighters and the public, by continually using the risk management process. It is the expectation that every person assigned in any type of leadership role does a risk assessment and provides the appropriate mitigation measures prior to engaging in any activity.

INCIDENT OBJECTIVES:

- Adopt decisions and actions that thoughtfully consider firefighter and public safety especially with respect to communications, driving, aviation and mop-up.
- Maintain full integration under unified command ensuring stakeholder concerns are addressed for the complex.
- Coordinate closely with local resources to protect residences and timberlands from potential threat.
- Minimize suppression impacts to the wilderness characteristics of the Klamath National Forest through the use of natural barriers, trails, and existing fire scars.
- Utilize resources to maximize efficiency and minimize cost expenditures.

Weather Forecast for Period



Android

QR Codes to Fire Weather Calculator App
(for recording and Sharing weather observations)

- Fill out all fields, tap calculate, then send/share observation
- Please email kml and csv to salmonaugustweather@gmail.com
- No signal? The app stores the URL and queues it for transmission when you get a signal



iPhone

Notation: In addition to the fire area included in this incident action plan, the following fires are included in the Salmon August Complex:

- Garden 100% contained, patrol status
- Grizzly 100% contained, patrol status
- Rush 100% contained, patrol status
- Mary Monitor fire activity, unstaffed

Attachments (mark if attached)


X	Organization List - ICS 203	X	Medical Plan - ICS 206	X	Safety Message
X	Div. Assignment Lists - ICS 204	X	Incident Map	X	Weather
X	Communications Plan - ICS 205	X	Base Camp Map	X	Human Recourses

Prepared by (Planning Section Chief)

Mike Williams, PSC2 (t)

Approved by (Incident Commander)

ORGANIZATION ASSIGNMENT LIST (ICS 203)

Incident Name		Date/Time From		Date/Time To
SALMON AUGUST COMPLEX		09/07/2017 0700 THU		09/08/2017 0700 FRI
7. Operations Section			Branch	RUSH, MARY, BRIZZLEY, GARDEN
DAY OPS SECTION CHIEF	MATT CONKLIN, LUKE KENDAL SCOTT PACKWOOD		UNSTAFFED	UNSTAFFED
NIGHT OPS SECTION CHIEF	MIKE KOONTZ			
PLANNING OPS	JIM SNOW(T), MONTE WHIPPLE (T)			
Branch	WALLOW BRANCH I			
BRANCH DIRECTOR	POC LANDON HACK			
8. Air Operations Branch				
DIVISION/GROUP	A / D	BRIAN GILMORE	AIR OPS BRANCH DIRECTOR	JOANN OVERACKER
			AIR ATTACK SUPERVISOR	JOHN STEADMAN
Branch	WALLOW BRANCH II			
BRANCH DIRECTOR	LANDON HAACK		AIR TACTICAL GROUP SUPERVISOR	GARY DANIEL
DIVISION/GROUP	H	RICH NALDER RON BROWN (T)	HELICOPTER COORDINATOR	BILL LAMPERT, JEFF QUICK SCOTT SMITH
DIVISION/GROUP	K	JEFF EDSON MIKE STALEY (T)		
DIVISION/GROUP	M	JON JONES WYATT TANNER		
DIVISION/GROUP	KIDDER CONT.	ROSS MILLER		
Branch	WALLOW BRANCH III			
9. Administration Section				
BRANCH DIRECTOR	RANDY ENGLER, DEANO ESADES (T)		CHIEF	KAREN BAUMAN JOHN KISZKA
DIVISION/GROUP	P	SHAWN RALEY BRAD RAFEEDY (T)	TIME UNIT	KAT MASON
DIVISION/GROUP	S	JESSE MONTIJO, TYLER MCCOWAN (T)	PERSONNEL TIME	ERIC SCHLUMPF
			EQUIPMENT TIME	BRAD BURGESS (T)
			COMPENSATION UNIT	LARRY MEDRANO (T) TRACY NICHOLSON
Branch	WALLOW BRANCH IV			
BRANCH DIRECTOR	GREG OVERACKER, RANDY JENNINGS (T)			
DIVISION/GROUP	T	AL WARD ROY JONES (T)		
DIVISION/GROUP	V	JASON FLORES		
DIVISION/GROUP	Y	ROB NOXON MARVIN VOLRIE (T)		
DIVISION/GROUP	NIGHT	JOHN OWINGS TEMO BALTAZAR		
9. Prepared By:	Name: MIKE WILLIAMS	Position/Title: PSC2 (T)	Signature: 	
ICS 203	IAP Page	Date/Time: 09/06/2017 2100		



Fire Weather Forecast

FORECAST NO: 20

NAME OF FIRE: Salmon August Complex

PREDICTION FOR: 0700 Thu - 0700 Fri

UNIT: CA-KNF

SHIFT DATE: 9/7

SIGNED: *Matt Mehle*

TIME AND DATE

Incident Meteorologist- Matt Mehle

FORECAST ISSUED: 1900 9/6/17

*****Red Flag Warning through 11 PM Thursday - Lightning*****
*****Flash Flood Watch 11 AM -11 PM*****

WEATHER DISCUSSION: Another active weather day expected across the complex as tropical moisture remains over the region. There will be a greater chance for wet thunderstorms across the complex. Any developed storms will be capable of producing gusty winds, lightning and heavy rain. The cooling trend and moistening trend noticed yesterday will continue today. Be weather aware today and have a plan "b".

WEATHER FORECAST FOR THURSDAY:

WEATHER: Partly to mostly cloudy with scattered thunderstorms. Some storms maybe strong with heavy rain.

TEMPERATURES: Max Lower Elevations...80-86; ridges...70-77F. 24 HR Trend Down 5

HUMIDITY: Min Lower Elevation....35-50%; ridges...45-60%. 24 HR Trend Up 5-10%

SLOPE/VALLEY - Downslope/Downcanyon less than 4 mph in the morning becoming Upcanyon / Upslope 3 to 5 mph gusts to 8 mph.

RIDGETOP- Variable 3 to 6 mph with gusts to 8 mph in the morning becoming southwest 6 to 10 mph in the afternoon. Gusts 15 mph in the afternoon.

HAINES: 2 LAL: 4 Wetting Rain: 50%

WEATHER FORECAST FOR THURSDAY NIGHT:

WEATHER: Partly to mostly cloudy with a chance for thunderstorms.

TEMPERATURES: Min Lower slopes/valleys 53-59F. Ridges 49-56F 24 HR Trend: Down 5

HUMIDITY: Max Lower slopes...80-100%; Ridges...80-90%. 24 HR Trend: Up 10-20%

20-FOOT WIND:

SLOPE/VALLEY - Upslope 2-5 with gusts to 7 mph in the evening...becoming downcanyon/downslope 2 to 5 mph after 2100.

RIDGETOP - Southwest in the evening 4 to 8 mph becoming variable less than 6 mph overnight. Gusts up to 15 mph in the evening.

LAL: 3 Wetting Rain: 30%

EXTENDED FORECAST:

FRIDAY... Partly cloudy a chance for thunderstorms. **LAL:3** Max temps...upper 60s to 80s. Min RH 40-50%. Northeast 5 to 10 mph. Strongest over ridges and upper slopes.

REALTIME RAWS INFO for
SALMON AUGUST COMPLEX

WEATHER SAFETY MESSAGE:

Review IRPG pg 21 – Lightning Safety.



FIRE BEHAVIOR FORECAST

FORECAST NUMBER: 19

OPERATIONAL PERIOD: September 07, 2017

FIRE NAME: Salmon August Complex Fire

Thursday

DATE ISSUED: 9/06/17 2200hrs

UNIT: CA-KNF-006081

SIGNED: 

Typed/printed: SITL, K. VanWig

INPUTS

WEATHER SUMMARY: Red Flag Warning in effect through 2200 hours Tonight for abundant lightning and dry fuels.

Mostly cloudy. Chance of showers and thunderstorms. Areas of smoke.

Max temperature.....80-86 valleys and 70-77 ridges.

Min humidity.....35-50% valleys and 45-60% ridges.

20-foot winds.....

Day: Southwest 3 to 6 becoming 5 to 8 in the afternoon.

Evening: Southwest 3 to 6 becoming variable >6 overnight.

LAL:4 Haines: 2 CWR: 50% ...ERC...70 PBI...60%

OUTPUTS

FIRE BEHAVIOR

GENERAL:

The fire's main influence is heavy dead and down and steep topography. The fire is burning in pockets of fuel that hasn't seen fire in 60 years. Fuels consist of moderate to heavy stringers of mixed conifer, snowbrush, white thorn and Manzanita. Brush LPMC at 120%. Conifer 160%. Many large rock scree areas exist. The fire has been dependent upon slope and wind alignment. Group torching to short duration crown transition has developed with headfire. Spotting distance up to 1/4-1/2 mile with crown fire spotting out to 1 mile and rollout potential exists.

Surface fire spread 6-12 ch/hr with headfire and around 1-3 ch/hr backing and flanking.

...Flame lengths 3ftDFMFC = 3-5% ..1000 hr fuels are at 7%

SPECIFIC:

Wallow Fire: Fire will continue to spread and threaten control lines. Fire will continue to spread Northeast down Patterson Creek drainage and Southwest down Crapo and Morehouse drainages toward Forks of Salmon and Sawyer Bar Road throughout the day. Surface fire to crown transition is likely in many areas. Identify wind and slope alignment for aggressive fire spread.

BRANCH 1: Surface fire spread transition to crown has potential. Rollout could still challenge control lines.

BRANCH 2: Southwest winds will cause the fire to challenge existing control lines. Surface fire spread transition to crown has potential. Rollout could still challenge control lines.

BRANCH 3: Fire will challenge control lines at Snoozers Ridge and Etna Mill Creek. Rollout could still challenge existing control lines.

BRANCH 5: Fire will continue spread toward Idlewild, Tanner Peak, Little North Fork, Forks of Salmon, Sawyers Bar Road and the North Fork of the Salmon River. Creeping and Backing down slope/canyon expected. Rollout can enhance this fire movement potential when aligned with wind or slope.

Garden / Grizzly / Mary Fire / Rush Fire: None to Minimal fire growth is anticipated.

AIR OPERATIONS:

Smokey conditions rain and thunderstorms today could limit aircraft use throughout the operational period.

SAFETY

- **Red Flag Warning in effect through 2200 hours tonight for abundant lightning and dry fuels.**
- Fuels will remain receptive to fire spread due to low time lag fuels moistures.
- Erratic winds possible as thunderstorms pass through the area.
- Keep situational awareness up for an increase in fire activity and shifting winds.
- STOP = Stop Think Observe Predict.

Division/Group Assignment List (ICS 204 WF)

1. Incident Name		2. Operational Period		3. Operations Period		
SALMON AUGUST COMPLEX		Branch: I		Division/Group: WALLOW DIV A/D		
4. Operations Period		5. Operations Period		6. Personnel Assigned (see Form 4)		
Date/Time From: 09/07/2017 0700 THU		Date/Time To: 09/07/2017 1900 THU		OPERATIONS CHIEF: MATT CONKLIN, LUKE KENDALL, SCOTT PACKWOOD		
DIVISION/GROUP SUPERVISOR: BRIAN W GILMORE		BRANCH DIRECTOR: LONDON HAACK		AIR OPERATIONS BRANCH DIRECTOR: JOANN OVERACKER		
7. Personnel Assigned (see Form 4)						
Strike Team / Task Force / Resource Designator	LWD	Leader	Number Persons	Drop Off PT./Time	Pick Up PT./Time	
HC2 WFM - GRASS LAKE O-82	09/22	WILLIAM C JOHNSON	10	DP6/0800	DP6/1900	
ENG3 ENGINE - T3 - 35 E-173	09/17	JOHN GEANEY	5	DP6/0800	DP6/1900	
SPT PACK STRING - STF E-118	09/10	JOHN SPRIK	1	DP6/0800	DP6/1900	
SPT PACK STRING - INF E-119	09/14	MICHAEL MORSE	1	DP6/0800	DP6/1900	
REAF O-380	09/19	JUSTIN R ROBBINS	1	DP6/0800	DP6/1900	
REAF O-381	09/19	JOSIAH MCELROY	1	DP6/0800	DP6/1900	
6. Control Operations/Work Assignments:						
DIV A Task/Purpose Monitor the fire line edge, including areas from H-2 West to Man Eaton Lake.						
DIV D Task/Purpose Patrol mop up where safe and evaluate from D/A break to the east into DIV D/H break.						
DIV A/D Endstate Holding and monitoring the fire lines will prevent fire spread to the North, protecting the community of Etna.						
7. Special Instructions:						
<ul style="list-style-type: none"> * Any work on the Pacific Crest Trail - see PCT guidelines page. * Coyote and Spike Camps- see guidance on PCT and Human Waste Management. * Be cognizant of archeological, heritage, and cultural sites. If found, leave undisturbed, flag, and notify the DIVS and READ. * ALL TRASH NEEDS TO BE REMOVED. CLEAR HELISPOTS AND SLEEPING AREAS OF EQUIPMENT, SUPPLIES, AND TRASH. * GPS all pump locations and provide coordinates to the Situation Unit and READ's. * All leaders and supervisors monitor A/G Command. * All dozers consult with READS before constructing lines and utilize ridges when constructing direct and indirect lines. * Point of contact for the DIV will be OPBD Landon Haack in Branch II. * Marble Mountain is spiked at H3. * Utilize the pack strings for logistical support requests; 24hr notice is needed on all requests. 						
8. Division/Group Communications/Reporting Authority						
Priority	Channel	RX Frequency N/W	RX Tone/NAC	TX Frequency N/W	TX Tone/NAC	Mode
9. Prepared By (Resource Unit Leader)		Approved By (Planning Section Chief)		Date	Time	
KERSHAW / CLARK (T) / DANIELS (T) / WHITE (T)		STEVE ANDERSON PSC2		09/06/2017	2100	

INCIDENT RADIO COMMUNICATIONS PLAN		Incident Name			Date/Time Prepared			Operational Period Date/Time		
INCIDENT RADIO COMMUNICATIONS PLAN		Salmon August Complex			9/6/17 1730			9/7/2017, 0700 to 9/8/17, 0700		
Zn / Ch	Function	Channel Name/Trunked Talkgroup	Assignment	RX Freq	RX Tone/NAC	TX Freq	TX Tone/NAC	Mode A, D, M	Remarks	
1	Command	NIFC C10	All Divisions	170.4125	162.2	165.9625	162.2	A	Tone 15 on English Peak	
2	Command	NIFC C3	All Divisions	168.0750	162.2	170.4250	162.2	A	Tone 15 on Quartz lookout	
3	Command	NIFC C66	All Divisions	170.3125	162.2	164.6250	162.2	A	Tone 15 on Whisky Butte	
4	Command	NIFC C85	All Divisions	164.7750	162.2	172.6500	162.2	A	Tone 15 on Blue Ridge	
5	Dispatch	Salmon	Back up Net	172.4000	0.0	164.1250	156.7	A		
6	Tactical	NIFC T3	DIV V/P	168.6000	162.2	168.6000	162.2	A		
7	Tactical	NIFC T5	DIV T	166.7250	162.2	166.7250	162.2	A		
8	Tactical	NIFC T6	DIV Kidder/S	166.7750	162.2	166.7750	162.2	A		
9	Tactical	NIFC T7	DIV M	168.2500	162.2	168.2500	162.2	A		
10	Tactical	R5 T4	DIV K	166.5500	162.2	166.5500	162.2	A		
11	Tactical	R5 T5	DIV H/Y	167.1125	162.2	167.1125	162.2	A		
12	Tactical	R5 T6	DIV A/D	168.2375	162.2	168.2375	162.2	A		
13	Air - Ground CMD	Air CMD	All Divisions	166.6750	0.0	166.6750	0.0	A		
14	Air - Ground Tac	Air Tac	All Divisions	169.0875	0.0	169.0875	0.0	A		
15/19	Air - Ground	CALCORD	All Divisions	156.0750	0.0	156.0750	156.7	A	AIR Medical	
16/20	Emergency only	GUARD	All Divisions	168.6250	0.0	168.6250	110.9	A	AIR GUARD - emerg. use only	
Prepared By (Communications Unit Leader)										
Chris Perry, COML 530-467-1509				Incident Location			Etna, CA			
				County	Siskiyou	Latitude, Longitude				
				41.4568250, -122.8684620						

Division/Group Assignment List (ICS 204 WF)

1. Incident Name:		3.				
SALMON AUGUST COMPLEX		Branch:	Division/Group:			
2. Operational Period:		II	WALLOW DIV H			
Date/Time From: 09/07/2017 0700 THU	Date/Time To: 09/07/2017 1900 THU					
4. Operational Personnel:						
OPERATIONS CHIEF	MATT CONKLIN, LUKE KENDALL SCOTT PACKWOOD	BRANCH DIRECTOR	LONDON HAACK			
DIVISION/GROUP SUPERVISOR	RICH NALDER RON E BROWN (T)	AIR OPERATIONS BRANCH DIRECTOR	JOANN OVERACKER			
5. Personnel Assigned This Period:						
Strike Team / Task Force / Resource Designator	LWD	Leader	Number Persons	Drop Off PT./Time	Pick Up PT./Time	
TASK FORCE 2 TFLD O-399	09/18	MATTHEW JOHNSON	1	DP6/0800	DP6/1900	
-TFLD O-398	09/19	EDWARD ANDERSON	1	DP6/0800	DP6/1900	
- ENG3 AZ-PNP - E513 E-66	09/07	RON HOOD	4	DP6/0800	DP6/1900	
- ENG6 CO-RGF 671 E-82	09/08	DAVID CARR	4	DP6/0800	DP6/1900	
- ENG6 WCP 629 E-79	09/08	ROBERT A BUNDY	3	DP6/0800	DP6/1900	
- ENG6 RED ROCK FIRE E2 E-87	09/10	MICHAEL MATTSON	3	DP6/0800	DP6/1900	
WTT2 STATEWIDE FIRE E-10071 ***	09/08	SCOTT HASTINGS	2	DP6/0800	DP6/0800	
WTT2 HOFF -N-VEST E-10070 ***	09/08	SCOTT VEST	2	DP6/0800	DP6/0800	
FEMP O-286	09/12	ANTHONY BALBIANI	1	DP6/0800	DP6/1900	
EMTF O-280	09/14	COLLIN JENSEN	1	DP6/0800	DP6/1900	
6. Control Operations/Work Assignments:						
<p>DIV H Task/Purpose</p> <p>* Continue mop up and monitor the fire lines edge. Utilize direct and indirect handlines from DIV A/D break to west / northwest around H-2, southwest of fire.</p> <p>* Gather intel.</p> <p>DIV H Endstate</p> <p>* To prevent fire spread west / northwest into the communities west of Greenview and South Kidder Creek.</p>						
7. Special Instructions:						
<p>*** 24 hour resources move to NIGHT in respective divisions after day shift.</p> <p>* ALL TRASH NEEDS TO BE REMOVED DAILY BY ALL RESOURCES. PACK IT IN, PACK IT OUT.</p> <p>* Be cognizant of archeological, heritage, and cultural sites. If found, leave undisturbed, flag, and notify the DIVS and READ.</p> <p>* All line resources are to fill water tanks from DP10 water site only and utilize fish screens when drafting.</p> <p>* Keep vehicles out of waterways.</p> <p>* GPS all pump locations and provide coordinates to the Situation Unit and READ's.</p> <p>* All leaders and supervisors monitor A/G Command.</p> <p>* All dozers consult with READS before constructing lines and utilize ridges when constructing direct and indirect lines.</p>						
8. Division/Group Communication Summary:						
Channel	Channel	RX Frequency N/W	RX Tone/NAC	TX Frequency N/W	TX Tone/NAC	Mode
9. Prepared By (Resource Unit Leader)		Approved By (Planning Section Chief)		Date	Time	
KERSHAW / CLARK (T) / DANIELS (T) / WHITE (T)		STEVE ANDERSON PSC2		09/06/2017	2100	

INCIDENT RADIO

Incident Name

COMMUNICATIONS PLAN

Salmon August Complex

Date/Time Prepared

9/6/17 1730

Operational Period Date/Time

9/7/2017, 0700 to 9/8/17, 0700

Zn / Ch	Function	Channel Name/Trunked Talkgroup	Assignment	RX Freq	RX Tone/NAC	TX Freq	TX Tone/NAC	Mode A, D, M	Remarks
1	Command	NIFC C10	All Divisions	170.4125	162.2	165.9625	162.2	A	Tone 15 on English Peak
2	Command	NIFC C3	All Divisions	168.0750	162.2	170.4250	162.2	A	Tone 15 on Quartz lookout
3	Command	NIFC C66	All Divisions	170.3125	162.2	164.6250	162.2	A	Tone 15 on Whisky Butte
4	Command	NIFC C85	All Divisions	164.7750	162.2	172.6500	162.2	A	Tone 15 on Blue Ridge
5	Dispatch	Salmon	Back up Net	172.4000	0.0	164.1250	156.7	A	
6	Tactical	NIFC T3	DIV V/P	168.6000	162.2	168.6000	162.2	A	
7	Tactical	NIFC T5	DIV T	166.7250	162.2	166.7250	162.2	A	
8	Tactical	NIFC T6	DIV Kidder/S	166.7750	162.2	166.7750	162.2	A	
9	Tactical	NIFC T7	DIV M	168.2500	162.2	168.2500	162.2	A	
10	Tactical	R5 T4	DIV K	166.5500	162.2	166.5500	162.2	A	
11	Tactical	R5 T5	DIV H/Y	167.1125	162.2	167.1125	162.2	A	
12	Tactical	R5 T6	DIV A/D	168.2375	162.2	168.2375	162.2	A	
13	Air - Ground CMD	Air CMD	All Divisions	166.6750	0.0	166.6750	0.0	A	
14	Air - Ground Tac	Air Tac	All Divisions	169.0875	0.0	169.0875	0.0	A	
15/19	Air - Ground	CALCORD	All Divisions	156.0750	0.0	156.0750	156.7	A	AIR Medical
16/20	Emergency only	GUARD	All Divisions	168.6250	0.0	168.6250	110.9	A	AIR GUARD - emerg. use only

Prepared By (Communications Unit Leader)

Chris Perry, COML 530-467-1509



Incident Location

Etna, CA

County

Sliskiyou

Latitude, Longitude
41.4568250, -122.8684620

Division/Group Assignment List (ICS 204 WF)

1. Incident Name		2. Operational Period		3. Operational Period		4. Operations Personnel		5. Resources Assigned this Period					
SALMON AUGUST COMPLEX				Branch: II		Division/Group: WALLOW DIV K							
Date/Time From: 09/07/2017 0700 THU		Date/Time To: 09/07/2017 1900 THU											
OPERATIONS CHIEF		MATT CONKLIN, LUKE KENDALL SCOTT PACKWOOD		BRANCH DIRECTOR		LONDON HAACK							
DIVISION/GROUP SUPERVISOR		JEFF EDSON MICHAEL STALEY (T)		AIR OPERATIONS BRANCH DIRECTOR		JOANN OVERACKER							
Strike Team / Task Force / Resource Designator		LWD	Leader	Number Persons	Drop Off PT./Time	Pick Up PT./Time							
HC1 DIAMOND MOUNTAIN IHC C-76		09/11	DAN VARNEY	19	DP12/0800	DP12/1900							
HCS1 S/T 9240G C-10011 ***		09/18	BROCK E REDDING	30	DP12/0800	DP12/0800							
HCS1 S/T 9141G C-10012 ***		09/18	KEVIN RYAN	30	DP12/0800	DP12/0800							
HCS1 S/T 9255G C-10017 ***		09/13	PHILLIP SMITH	29	DP12/0800	DP12/0800							
ES3 9245C, CIAPPONI E-91 ***		09/13	NICKOLAS E CIAPPONI	18	DP12/0800	DP12/0800							
WTT1 H&H FEEDERS E-10012		09/11	JACK HURLIMANN	1	DP12/0800	DP12/1900							
WTT2 COTTONWOOD EQUIPMENT E-10090 ***		09/12	ZACK MAZZOTTA	2	DP12/0800	DP12/0800							
WTT2 KNF 21 E-152		09/14	ROMAN S DOBRATZ	2	DP12/0800	DP12/1900							
DO22 2242 E-10005 ***		09/11	RICK ENDICOTT	3	DP12/0800	DP12/0800							
DO22 2140 E-10007 ***		09/11	ZACK GUTZMAN	2	DP12/0800	DP12/0800							
FALM NORTH ZONE FALLERS - MOD 5 - O-319		09/14	STEWART KEITH	2	DP12/0800	DP12/1900							
6. Resource/Group Communication Summary													
Function	Channel	RX Frequency N/W	RX Tone/NAC	TX Frequency N/W	TX Tone/NAC	Mode							
SEE REVERSE													
9. Prepared By (Resource Unit Leader) KERSHAW / CLARK (T) / DANIELS (T) / WHITE (T)			Approved By (Planning Section Chief) STEVE ANDERSON PSC2			Date 09/06/2017	Time 2100						

INCIDENT RADIO

Incident Name

COMMUNICATIONS PLAN

Salmon August Complex

Date/Time Prepared

9/6/17 1730

Operational Period Date/Time

9/7/2017, 0700 to 9/8/17, 0700

Zn / Ch	Function	Channel Name/Trunked Talkgroup	Assignment	RX Freq	RX Tone/NAC	TX Freq	TX Tone/NAC	Mode A, D, M	Remarks
1	Command	NIFC C10	All Divisions	170.4125	162.2	165.9625	162.2	A	Tone 15 on English Peak
2	Command	NIFC C3	All Divisions	168.0750	162.2	170.4250	162.2	A	Tone 15 on Quartz lookout
3	Command	NIFC C66	All Divisions	170.3125	162.2	164.6250	162.2	A	Tone 15 on Whisky Butte
4	Command	NIFC C85	All Divisions	164.7750	162.2	172.6500	162.2	A	Tone 15 on Blue Ridge
5	Dispatch	Salmon	Back up Net	172.4000	0.0	164.1250	156.7	A	
6	Tactical	NIFC T3	DIV V/P	168.6000	162.2	168.6000	162.2	A	
7	Tactical	NIFC T5	DIV T	166.7250	162.2	166.7250	162.2	A	
8	Tactical	NIFC T6	DIV Kidder/S	166.7750	162.2	166.7750	162.2	A	
9	Tactical	NIFC T7	DIV M	168.2500	162.2	168.2500	162.2	A	
10	Tactical	R5 T4	DIV K	166.5500	162.2	166.5500	162.2	A	
11	Tactical	R5 T5	DIV H/Y	167.1125	162.2	167.1125	162.2	A	
12	Tactical	R5 T6	DIV A/D	168.2375	162.2	168.2375	162.2	A	
13	Air - Ground CMD	Air CMD	All Divisions	166.6750	0.0	166.6750	0.0	A	
14	Air - Ground Tac	Air Tac	All Divisions	169.0875	0.0	169.0875	0.0	A	
15/19	Air - Ground	CALCORD	All Divisions	156.0750	0.0	156.0750	156.7	A	AIR Medical
16/20	Emergency only	GUARD	All Divisions	168.6250	0.0	168.6250	110.9	A	AIR GUARD - emerg. use only

Prepared By (Communications Unit Leader)

Chris Perry, COML 530-467-1509

Incident Location

Etna, CA

County Siskiyou

Latitude, Longitude

41.4568250, -122.8684620

Division/Group Assignment List (ICS 204 WF)

1. Incident Name:		2. Operational Period:		3. Branch:		4. Division/Group:	
SALMON AUGUST COMPLEX		DAY		II		WALLOW DIV K	
Date/Time From: 09/07/2017 0700 THU		Date/Time To: 09/07/2017 1900 THU					
5. Operations Personnel							
OPERATIONS CHIEF		MATT CONKLIN, LUKE KENDALL SCOTT PACKWOOD		BRANCH DIRECTOR		LONDON HAACK	
DIVISION/GROUP SUPERVISOR		JEFF EDSON MICHAEL STALEY (T)		AIR OPERATIONS BRANCH DIRECTOR		JOANN OVERACKER	
6. Resources Assigned This Period							
Strike Team / Task Force / Resource Designator		LWD	Leader	Number Persons	Drop Off PT./Time	Pick Up PT./Time	
FEMT O-287		09/15	JASON SCOTT	1	DP12/0800	DP12/1900	
EMTF O-220		09/11	WES CHAMBERLIN	1	DP12/0800	DP12/1900	
EMPF O-149		09/13	BRENT JENSEN	1	DP12/0800	DP12/1900	
SOFR O-194 (DIV K,M, KIDDER CONT.)		09/07	KEN MARGIOTT	1	DP12/0800	DP12/1900	
SOFR O-404 (DIV K,M, KIDDER CONT.)		09/19	LANCE ROBINSON	1	DP12/0800	DP12/1900	
<p>6. Control Operations/Work Assignments:</p> <p><u>DIV K Task/Purpose</u> * Construct direct or indirect lines on main fire and spot fires as conditions allow. Continue to improve dozer lines and roads from DP11 to DP12. Scout and locate existing roads for secondary control lines.</p> <p><u>DIV K End State</u> * To prevent fire spread North of Kidder Creek and into the community of Greenview.</p>							
<p>7. Special Instructions:</p> <p>*** 24 hour resources move to NIGHT in respective divisions after day shift. * ALL TRASH NEEDS TO BE REMOVED DAILY BY ALL RESOURCES. PACK IT IN, PACK IT OUT. * Be cognizant of archeological, heritage, and cultural sites. If found, leave undisturbed, flag, and notify the DIVS and READ. * GPS all pump locations and provide coordinates to the Situation Unit and READ's. * All leaders and supervisors monitor A/G Command. * All dozers consult with READS before constructing lines and utilize ridges when constructing direct and indirect lines.</p>							
8. Division/Group Communication Summary							
Function	Channel	RX Frequency N/W	RX Tone/NAC	TX Frequency N/W	TX Tone/NAC	Mode	
SPE REVERSE							
9. Prepared By (Resource Unit Leader)		Approved By (Planning Section Chief)		Date	Time		
KERSHAW / CLARK (T) / DANIELS (T) / WHITE (T)		STEVE ANDERSON PSC2		09/06/2017	2100		

INCIDENT RADIO COMMUNICATIONS PLAN Incident Name: **Salmon August Complex** Date/Time Prepared: **9/6/17 1730** Operational Period Date/Time: **9/7/2017, 0700 to 9/8/17, 0700**

Zn / Ch	Function	Channel Name/Trunked Talkgroup	Assignment	RX Freq	RX Tone/NAC	TX Freq	TX Tone/NAC	Mode A, D, M	Remarks
1	Command	NIFC C10	All Divisions	170.4125	162.2	165.9625	162.2	A	Tone 15 on English Peak
2	Command	NIFC C3	All Divisions	168.0750	162.2	170.4250	162.2	A	Tone 15 on Quartz lookout
3	Command	NIFC C66	All Divisions	170.3125	162.2	164.6250	162.2	A	Tone 15 on Whisky Butte
4	Command	NIFC C85	All Divisions	164.7750	162.2	172.6500	162.2	A	Tone 15 on Blue Ridge
5	Dispatch	Salmon	Back up Net	172.4000	0.0	164.1250	156.7	A	
6	Tactical	NIFC T3	DIV V/P	168.6000	162.2	168.6000	162.2	A	
7	Tactical	NIFC T5	DIV T	166.7250	162.2	166.7250	162.2	A	
8	Tactical	NIFC T6	DIV Kidder/S	166.7750	162.2	166.7750	162.2	A	
9	Tactical	NIFC T7	DIV M	168.2500	162.2	168.2500	162.2	A	
10	Tactical	R5 T4	DIV K	166.5500	162.2	166.5500	162.2	A	
11	Tactical	R5 T5	DIV H/Y	167.1125	162.2	167.1125	162.2	A	
12	Tactical	R5 T6	DIV A/D	168.2375	162.2	168.2375	162.2	A	
13	Air - Ground CMD	Air CMD	All Divisions	166.6750	0.0	166.6750	0.0	A	
14	Air - Ground Tac	Air Tac	All Divisions	169.0875	0.0	169.0875	0.0	A	
15/19	Air - Ground	CALCORD	All Divisions	156.0750	0.0	156.0750	156.7	A	AIR Medical
16/20	Emergency only	GUARD	All Divisions	168.6250	0.0	168.6250	110.9	A	AIR GUARD - emerg. use only

Prepared By (Communications Unit Leader) **Chris Perry, COML 530-467-1509** Incident Location: **Etna, CA**
 County: Siskiyou Latitude, Longitude: 41.4568250, -122.8684620

Division/Group Assignment List (ICS 204 WF)

1 Incident Name		2				
SALMON AUGUST COMPLEX		Branch: II	Division/Group: WALLOW DIV M			
3 Operational Period		DAY				
Date/Time From: 09/07/2017 0700 THU	Date/Time To: 09/07/2017 1900 THU					
4 Operations Personnel						
OPERATIONS CHIEF	MATT CONKLIN, LUKE KENDALL SCOTT PACKWOOD	BRANCH DIRECTOR	LONDON HAACK			
DIVISION/GROUP SUPERVISOR	JON JONES WYATT TANNER (T)	AIR OPERATIONS BRANCH DIRECTOR	JOANN OVERACKER			
5 Resources Assigned This Period						
Strike Team / Task Force / Resource Designator	LWD	Leader	Number Persons	Drop Off PT./Time	Pick Up PT./Time	
HC1 REDDING IHC C-77 (KNF IA)	09/12	DANIEL MALLIA	20	DP12/0800	DP12/1900	
HCS1 S/T 9260G C-12 ***	09/13	KEITH CUMMINGS	31	DP12/0800	DP12/0800	
HCS1 S/T 9124G C-10002 ***	09/11	KEVAN AARONS	32	DP12/0800	DP12/0800	
HC2I LAIA #3 C-47	09/09	STEVEN S STAPLES	20	DP12/0800	DP12/1900	
ES3 S/T 4232C E-170	09/16	MATTHEW T DONNELLY	21	DP12/0800	DP12/0800	
WTT1 BLACK KNIGHT FIRE E-10076 ***	09/11	WILSON	2	DP12/0800	DP12/0800	
WTT2 T & S DVBE INC. E-10091 ***	09/12	ROBERT JONES	2	DP12/0800	DP12/0800	
WTS2 CATTANEO 05210 E-35	09/11	JASON DOUGLAS	1	DP12/0800	DP12/1900	
DZS2 S/T 9118L E-10004 ***	09/11	ALEX LEANORD	6	DP12/0800	DP12/0800	
DO22 WET PUP TRUCKING E-10083	09/11	HODGETTS	2	DP12/0800	DP12/1900	
FEL1 JIM JOHNSON LOGGING E-10096	09/14	JIM JOHNSON	2	DP12/0800	DP12/1900	
FAL1 A & F ENTERPRISES O-320	09/15	GEORGE HARRISON	2	DP12/0800	DP12/1900	
6 Division/Group Communication Summary						
Frequency	Channel	RX Frequency N/W	RX Tone/NAC	TX Frequency N/W	TX Tone/NAC	Mode
842 REVERSE						
9. Prepared By (Resource Unit Leader)		Approved By (Planning Section Chief)		Date	Time	
KERSHAW / CLARK (T) / DANIELS (T) / WHITE (T)		STEVE ANDERSON PSC2		09/06/2017	2100	

INCIDENT RADIO COMMUNICATIONS PLAN Incident Name: **Salmon August Complex** Date/Time Prepared: **9/6/17 1730** Operational Period Date/Time: **9/7/2017, 0700 to 9/8/17, 0700**

Zn / Ch	Function	Channel Name/Trunked Talkgroup	Assignment	RX Freq	RX Tone/NAC	TX Freq	TX Tone/NAC	Mode A, D, M	Remarks
1	Command	NIFC C10	All Divisions	170.4125	162.2	165.9625	162.2	A	Tone 15 on English Peak
2	Command	NIFC C3	All Divisions	168.0750	162.2	170.4250	162.2	A	Tone 15 on Quartz lookout
3	Command	NIFC C66	All Divisions	170.3125	162.2	164.6250	162.2	A	Tone 15 on Whisky Butte
4	Command	NIFC C85	All Divisions	164.7750	162.2	172.6500	162.2	A	Tone 15 on Blue Ridge
5	Dispatch	Salmon	Back up Net	172.4000	0.0	164.1250	156.7	A	
6	Tactical	NIFC T3	DIV V/P	168.6000	162.2	168.6000	162.2	A	
7	Tactical	NIFC T5	DIV T	166.7250	162.2	166.7250	162.2	A	
8	Tactical	NIFC T6	DIV Kidder/S	166.7750	162.2	166.7750	162.2	A	
9	Tactical	NIFC T7	DIV M	168.2500	162.2	168.2500	162.2	A	
10	Tactical	R5 T4	DIV K	166.5500	162.2	166.5500	162.2	A	
11	Tactical	R5 T5	DIV H/Y	167.1125	162.2	167.1125	162.2	A	
12	Tactical	R5 T6	DIV A/D	168.2375	162.2	168.2375	162.2	A	
13	Air - Ground CMD	Air CMD	All Divisions	166.6750	0.0	166.6750	0.0	A	
14	Air - Ground Tac	Air Tac	All Divisions	169.0875	0.0	169.0875	0.0	A	
15/19	Air - Ground	CALCORD	All Divisions	156.0750	0.0	156.0750	156.7	A	AIR Medical
16/20	Emergency only	GUARD	All Divisions	168.6250	0.0	168.6250	110.9	A	AIR GUARD - emerg. use only

Prepared By (Communications Unit Leader) **Chris Perry, COML 530-467-1509** Incident Location: **Etna, CA** County: **Siskiyou** Siskiyou: **41.4568250, -122.8684620**

Division/Group Assignment List (ICS 204 WF)

1. Incident Name		2. Operational Period		3. Branch		4. Division/Group	
SALMON AUGUST COMPLEX		DAY		II		WALLOW DIV M	
Date/Time From: 09/07/2017 0700 THU		Date/Time To: 09/07/2017 1900 THU					
5. Operations Personnel							
OPERATIONS CHIEF		MATT CONKLIN, LUKE KENDALL SCOTT PACKWOOD		BRANCH DIRECTOR		LONDON HAACK	
DIVISION/GROUP SUPERVISOR		JON JONES WYATT TANNER (T)		AIR OPERATIONS BRANCH DIRECTOR		JOANN OVERACKER	
6. Resources Assigned the Period							
Strike Team / Task Force / Resource Designator		LWD	Leader	Number Persons	Drop Off PT./Time	Pick Up PT./Time	
FEMP O-283		09/15	DAVID MITCHELL	1	DP12/0800	DP12/1900	
EMPF O-223		09/09	SAM TYLER	1	DP12/0800	DP12/1900	
SOFR O-194 (DIV K,M, KIDDER CONT.)		09/07	KEN MARIGOTT	1	DP12/0800	DP12/1900	
SOFR O-404 (DIV K,M, KIDDER CONT.)		09/19	LANCE ROBINSON	1	DP12/0800	DP12/1900	
6. Control Operations/Work Assignments: DIV M Task/Purpose * Continue to improve existing dozer lines from Whiskey Butte North on the ridge into Sec 12 towards DP12. Go direct on spot fires when conditions allow. Work with Div. P to facilitate direct line to Etna Mill Creek from Whiskey Butte. Prepare for firing opportunities when conditions allow with division approval. DIV M Endstate * To prevent fire spread to the east affecting the communities in and around Etna.							
7. Special Instructions: *** 24 hour resources move to NIGHT in respective divisions after day shift. * Any prep on Pacific Crest Trail - see PCT guidelines. * ALL TRASH NEEDS TO BE REMOVED DAILY BY ALL RESOURCES. PACK IT IN, PACK IT OUT. * Be cognizant of archeological, heritage, and cultural sites. If found, leave undisturbed, flag, and notify the DIVS and READ. * GPS all pump locations and provide coordinates to the Situation Unit and READ's. * All leaders and supervisors monitor A/G Command. * All dozers consult with READS before constructing lines and utilize ridges when constructing direct and indirect lines.							
8. Division/Group Communication Summary							
Frequency	Channel	RX Frequency N/W	RX Tone/NAC	TX Frequency N/W	TX Tone/NAC	Mode	
SEE REVERSE							
9. Prepared By (Resource Unit Leader)			Approved By (Planning Section Chief)		Date	Time	
KERSHAW / CLARK (T) / DANIELS (T) / WHITE (T)			STEVE ANDERSON PSC2		09/06/2017	2100	

INCIDENT RADIO COMMUNICATIONS PLAN

Incident Name

Salmon August Complex

Date/Time Prepared

9/6/17 1730

Operational Period Date/Time

9/7/2017, 0700 to 9/8/17, 0700

Zn / Ch	Function	Channel Name/Trunked Talkgroup	Assignment	RX Freq	RX Tone/NAC	TX Freq	TX Tone/NAC	Mode A, D, M	Remarks
1	Command	NIFC C10	All Divisions	170.4125	162.2	165.9625	162.2	A	Tone 15 on English Peak
2	Command	NIFC C3	All Divisions	168.0750	162.2	170.4250	162.2	A	Tone 15 on Quartz lookout
3	Command	NIFC C66	All Divisions	170.3125	162.2	164.6250	162.2	A	Tone 15 on Whisky Butte
4	Command	NIFC C85	All Divisions	164.7750	162.2	172.6500	162.2	A	Tone 15 on Blue Ridge
5	Dispatch	Salmon	Back up Net	172.4000	0.0	164.1250	156.7	A	
6	Tactical	NIFC T3	DIV V/P	168.6000	162.2	168.6000	162.2	A	
7	Tactical	NIFC T5	DIV T	166.7250	162.2	166.7250	162.2	A	
8	Tactical	NIFC T6	DIV Kidder/S	166.7750	162.2	166.7750	162.2	A	
9	Tactical	NIFC T7	DIV M	168.2500	162.2	168.2500	162.2	A	
10	Tactical	R5 T4	DIV K	166.5500	162.2	166.5500	162.2	A	
11	Tactical	R5 T5	DIV H/Y	167.1125	162.2	167.1125	162.2	A	
12	Tactical	R5 T6	DIV A/D	168.2375	162.2	168.2375	162.2	A	
13	Air - Ground CMD	Air CMD	All Divisions	166.6750	0.0	166.6750	0.0	A	
14	Air - Ground Tac	Air Tac	All Divisions	169.0875	0.0	169.0875	0.0	A	
15/19	Air - Ground	CALCORD	All Divisions	156.0750	0.0	156.0750	156.7	A	AIR Medical
16/20	Emergency only	GUARD	All Divisions	168.6250	0.0	168.6250	110.9	A	AIR GUARD - emerg. use only

Prepared By (Communications Unit Leader)

Chris Perry, COML 530-457-1509

Incident Location

Etna, CA

County Siskiyou

Latitude, Longitude

41.4568250, -122.8684620

Division/Group Assignment List (ICS 204 WF)

1. Incident Name:		2. Operational Period:				
SALMON AUGUST COMPLEX		Branch:		Division/Group:		
		II		KIDDER CONTINGENCY		
3. Operational Period:						
Date/Time From: 09/07/2017 0700 THU		Date/Time To: 09/07/2017 1900 THU				
4. Operations Personnel:						
OPERATIONS CHIEF		MATT CONKLIN, LUKE KENDALL SCOTT PACKWOOD		BRANCH DIRECTOR LANDON HAACK		
DIVISION/GROUP SUPERVISOR		ROSS MILLER		AIR OPERATIONS BRANCH DIRECTOR JOANN OVERACKER		
5. Resources Assigned This Period:						
Strike Team / Task Force / Resource Designator		LWD	Leader	Number Persons	Drop Off PT./Time	Pick Up PT./Time
ES3 S/T XSK 3200C E-10107		09/13	BENNY AUSTIN	16	ICP/0800	ICP/1900
ENG3 2668 E-10104 (SKU IA)		09/13	ADAM H SMITH	4	ICP/0800	ICP/1900
ENG3 2663 E-10102 (SKU IA)		09/13	PAUL KLINEFELTER	4	ICP/0800	ICP/1900
ENG3 2667 E-10103 (SKU IA)		09/13	LUKE WOODWARD	3	ICP/0800	ICP/1900
ENG3 2662 E-10101 (SKU IA)		09/13	BRENDAN DEMPSEY	3	ICP/0800	ICP/1900
ENG3 2697R E-10105 (SKU IA)		09/13	ALEX ELLIOTT	3	ICP/0800	ICP/1900
WTT1 SCOTT VALLEY - 1537 E-10106		09/13	PAT COSTELLO	1	ICP/0800	ICP/1900
WTT1 H&H FEEDERS E-10011		09/24	THOMAS GORDON	1	ICP/0800	ICP/1800
CHIP T1 BELLA WILDFIRE E-10077		09/11	CROWLEY	2	ICP/0800	ICP/1900
CHIP T2 SKU CGF E-10115		09/18	****NOT CHECKED IN****	2	ICP/0800	ICP/1900
SOFR O-194 (DIV K,M, KIDDER CONT.)		09/07	KEN MARIGOTT	1	ICP/0800	ICP/1900
SOFR O-404 (DIV K,M, KIDDER CONT.)		09/19	LANCE ROBINSON	1	ICP/0800	ICP/1900
6. Control Operations/Work Assignments:						
Kidder Cont. Task/Purpose						
* Complete contingency line from North Kidder Creek Road to Sawyers Bar Road utilizing existing road and fire break. Prep contingency line for possible firing operations. Review and complete structure prep from Millcreek Drainage, south to Sawyers Bar Road. Take direct action on spot fires as conditions allow.						
Kidder Cont. End State						
* Keep fire from spreading to northeast into Greenview and Etna. Protect structures from Millcreek to Etna.						
7. Special Instructions:						
* Coordinate with timber liaison.						
* Glendenning Road is restricted to private and fire use only.						
* ALL TRASH NEEDS TO BE REMOVED DAILY BY ALL RESOURCES. PACK IT IN, PACK IT OUT.						
* Be cognizant of archeological, heritage, and cultural sites. If found, leave undisturbed, flag, and notify the DIVS and READ.						
* GPS all pump locations and provide coordinates to the Situation Unit and READ's.						
* All leaders and supervisors monitor A/G Command.						
* All dozers consult with READS before constructing lines and utilize ridges when constructing direct and indirect lines.						
8. Division/Group Communication Summary:						
Parade	Channel	RX Frequency N/W	RX Tone/NAC	TX Frequency N/W	TX Tone/NAC	Mode
SEE RCV PAGE						
9. Prepared By (Resource Unit Leader)			Approved By (Planning Section Chief)		Date	Time
KERSHAW / CLARK (T) / DANIELS (T) / WHITE (T)			STEVE ANDERSON PSC2		09/06/2017	2100

INCIDENT RADIO COMMUNICATIONS PLAN

Incident Name

Salmon August Complex

Date/Time Prepared

9/6/17 1730

Operational Period Date/Time

9/7/2017, 0700 to 9/8/17, 0700

Zh / Ch	Function	Channel Name/Trunked Talkgroup	Assignment	RX Freq	RX Tone/NAC	TX Freq	TX Tone/NAC	Mode A, D, M	Remarks
1	Command	NIFC C10	All Divisions	170.4125	162.2	165.9625	162.2	A	Tone 15 on English Peak
2	Command	NIFC C3	All Divisions	168.0750	162.2	170.4250	162.2	A	Tone 15 on Quartz lookout
3	Command	NIFC C66	All Divisions	170.3125	162.2	164.6250	162.2	A	Tone 15 on Whisky Butte
4	Command	NIFC C85	All Divisions	164.7750	162.2	172.6500	162.2	A	Tone 15 on Blue Ridge
5	Dispatch	Salmon	Back up Net	172.4000	0.0	164.1250	156.7	A	
6	Tactical	NIFC T3	DIV V/P	168.6000	162.2	168.6000	162.2	A	
7	Tactical	NIFC T5	DIV T	166.7250	162.2	166.7250	162.2	A	
8	Tactical	NIFC T6	DIV Kidder/S	166.7750	162.2	166.7750	162.2	A	
9	Tactical	NIFC T7	DIV M	168.2500	162.2	168.2500	162.2	A	
10	Tactical	R5 T4	DIV K	166.5500	162.2	166.5500	162.2	A	
11	Tactical	R5 T5	DIV H/Y	167.1125	162.2	167.1125	162.2	A	
12	Tactical	R5 T6	DIV A/D	168.2375	162.2	168.2375	162.2	A	
13	Air - Ground CMD	Air CMD	All Divisions	166.6750	0.0	166.6750	0.0	A	
14	Air - Ground Tac	Air Tac	All Divisions	169.0875	0.0	169.0875	0.0	A	
15/19	Air - Ground	CALCORD	All Divisions	156.0750	0.0	156.0750	156.7	A	AIR Medical
16/20	Emergency only	GUARD	All Divisions	168.6250	0.0	168.6250	110.9	A	AIR GUARD - emerg. use only

Prepared By (Communications Unit Leader)

Chris Perry, COML 530-467-1509

Incident Location

Etna, CA

County Siskiyou

Latitude, Longitude

41.4568250, -122.8684620

Division/Group Assignment List (ICS 204 WF)

1. Incident Name: SALMON AUGUST COMPLEX			Branch: III		Division/Group: WALLOW DIV P		
2. Operational Period: SAT							
Date/Time From: 09/07/2017 0700 THU		Date/Time To: 09/07/2017 1900 THU					
3. Operating Personnel:							
OPERATIONS CHIEF		MATT CONKLIN, LUKE KENDALL SCOTT PACKWOOD		BRANCH DIRECTOR		RANDY ENGLER DEANO ESADES (T)	
DIVISION/GROUP SUPERVISOR		SHAWN RALEY BRAD RAFEEDY (T)		AIR OPERATIONS BRANCH DIRECTOR		JOANN OVERACKER	
4. Resources Assigned (See Period):							
Strike Team / Task Force / Resource Designator		LWD	Leader	Number Persons	Drop Off PT./Time	Pick Up PT./Time	
HCS1 S/T 9258G C-24 ***		09/13	JEFF GOWAN	31	DP15/0800	DP15/0800	
HCS1 S/T 9257G C-28 ***		09/09	JAKE HANNAN	32	DP15/0800	DP15/0800	
HC2 SHASTA 21 C-74		09/08	LLOYD CRUZ	18	DP15/0800	DP15/1900	
WTT1 BERRYHILL E-10010		09/24	MIKE HUDDLESTON	1	DP15/0800	DP15/1900	
WTT2 REDWARDS E-10093		09/12	ROBERT EDWARDS	1	DP15/0800	DP15/1900	
LDFR E-10113		09/18	MARK MCINTIRE	1			
CHIP TREE PRO E-10078		09/11	DAVID BERQUIST	1	DP15/0800	DP15/1900	
FALM HYMAS O-306		09/14	TREVOR HYMUS	2	DP15/0800	DP15/1900	
FALM MOD 13 O-305		09/14	GARY BURG	2	DP15/0800	DP15/1900	
5. Division/Group Communication Summary:							
Function	Channel	RX Frequency N/W	RX Tone/NAC	TX Frequency N/W	TX Tone/NAC	Mode	
SEE REVERSE							
9. Prepared By (Resource Unit Leader) KERSHAW / CLARK (T) / DANIELS (T) / WHITE (T)			Approved By (Planning Section Chief) STEVE ANDERSON PSC2		Date 09/06/2017	Time 2100	

INCIDENT RADIO

Incident Name

COMMUNICATIONS PLAN

Salmon August Complex

Date/Time Prepared

9/6/17 1730

Operational Period Date/Time

9/7/2017, 0700 to 9/8/17, 0700

Zh / Ch	Function	Channel Name/Trunked Talkgroup	Assignment	RX Freq	RX Tone/NAC	TX Freq	TX Tone/NAC	Mode A, D, M	Remarks
1	Command	NIFC C10	All Divisions	170.4125	162.2	165.9625	162.2	A	Tone 15 on English Peak
2	Command	NIFC C3	All Divisions	168.0750	162.2	170.4250	162.2	A	Tone 15 on Quartz lookout
3	Command	NIFC C66	All Divisions	170.3125	162.2	164.6250	162.2	A	Tone 15 on Whisky Butte
4	Command	NIFC C85	All Divisions	164.7750	162.2	172.6500	162.2	A	Tone 15 on Blue Ridge
5	Dispatch	Salmon	Back up Net	172.4000	0.0	164.1250	156.7	A	
6	Tactical	NIFC T3	DIV V/P	168.6000	162.2	168.6000	162.2	A	
7	Tactical	NIFC T5	DIV T	166.7250	162.2	166.7250	162.2	A	
8	Tactical	NIFC T6	DIV Kidder/S	166.7750	162.2	166.7750	162.2	A	
9	Tactical	NIFC T7	DIV M	168.2500	162.2	168.2500	162.2	A	
10	Tactical	R5 T4	DIV K	166.5500	162.2	166.5500	162.2	A	
11	Tactical	R5 T5	DIV H/Y	167.1125	162.2	167.1125	162.2	A	
12	Tactical	R5 T6	DIV A/D	168.2375	162.2	168.2375	162.2	A	
13	Air - Ground CMD	Air CMD	All Divisions	166.6750	0.0	166.6750	0.0	A	
14	Air - Ground Tac	Air Tac	All Divisions	169.0875	0.0	169.0875	0.0	A	
15/19	Air - Ground	CALCORD	All Divisions	156.0750	0.0	156.0750	156.7	A	AIR Medical
16/20	Emergency only	GUARD	All Divisions	168.6250	0.0	168.6250	110.9	A	AIR GUARD - emerg. use only

Prepared By (Communications Unit Leader)

Chris Perry, COML 530-467-1509

Incident Location

Etna, CA

County

Siskiyou

Latitude, Longitude

41.4568250, -122.8684620

Division/Group Assignment List (ICS 204 WF)

1. Incident Name:		2. Operational Period:		3. Branch:		4. Division/Group:	
SALMON AUGUST COMPLEX				III		WALLOW DIV P	
Date/Time From: 09/07/2017 0700 THU		Date/Time To: 09/07/2017 1900 THU					
5. Operations Personnel:							
OPERATIONS CHIEF		MATT CONKLIN, LUKE KENDALL SCOTT PACKWOOD		BRANCH DIRECTOR		RANDY ENGLER DEANO ESADES (T)	
DIVISION/GROUP SUPERVISOR		SHAWN RALEY BRAD RAFFEEDY (T)		AIR OPERATIONS BRANCH DIRECTOR		JOANN OVERACKER	
6. Resources Assigned This Period:							
Strike Team / Task Force / Resource Designator		LWD	Leader	Number Persons	Drop Off PT./Time	Pick Up PT./Time	
FOBS O-10028		09/12	WILLIAM JOSEPH PANZELLA	1	DP15/0800	DP15/1900	
XST REMS 2 O-216		09/07	ZACHARY P SWANSON	2	DP15/0800	DP15/1900	
EMPF O-271		09/08	SEAN ALLEN	1	DP15/0800	DP15/1900	
FEMP O-479			KEVIN LARSON	1	DP15/0800	DP15/1900	
EMTF O-272		09/12	JENNIFER J POWERS	1	DP15/0800	DP15/1900	
FEMT O-439			BRENT WEBER	1	DP15/0800	DP/1900	
SOF2 O-197		09/09	GLEN STAPLETON	1	DP15/0800	DP15/1900	
SOFR (T) O-226		09/09	DAVE WOODS	1	DP15/0800	DP15/1900	
6. Control Operations/Work Assignments:							
DIV P Task/Purpose							
* Continue to strengthen existing handline from PCT to northwest corner of Sec 15 where dozerline starts heading east of the northeast corner of Sec 10, improving handline to DP15 connecting to the road. Utilize road and handline to DIV P/M break to Whiskey Butte. Prepare DIV P resources for possible firing operations as directed by DIVS P.							
DIV P Endstate							
* Keep fire spread west of the communities in and around Etna and west of Sawyers Bar Road.							
7. Special Instructions:							
*** 24 hour resources move to NIGHT in respective divisions after day shift.							
* ALL TRASH NEEDS TO BE REMOVED DAILY BY ALL RESOURCES. PACK IT IN, PACK IT OUT.							
* Be cognizant of archeological, heritage, and cultural sites. If found, leave undisturbed, flag, and notify the DIVS and READ.							
* See READ's message related to Brewer Spruce Tree's.							
* GPS all pump locations and provide coordinates to the Situation Unit and READ's.							
* All leaders and supervisors monitor A/G Command.							
* All dozers consult with READS before constructing lines and utilize ridges when constructing direct and indirect lines.							
* Rafeedy from Salmon River IHC will be division trainee till crew demob.							
8. Radio/Radio Communication Summary:							
Priority	Channel	RX Frequency N/W	RX Tone/NAC	TX Frequency N/W	TX Tone/NAC	Mode	
9. Prepared By (Resource Unit Leader)		Approved By (Planning Section Chief)		Date		Time	
KERSHAW / CLARK (T) / DANIELS (T) / WHITE (T)		STEVE ANDERSON PSC2		09/06/2017		2100	

INCIDENT RADIO COMMUNICATIONS PLAN

Incident Name

Salmon August Complex

Date/Time Prepared

9/6/17 1730

Operational Period Date/Time

9/7/2017, 0700 to 9/8/17, 0700

Zn / Ch	Function	Channel Name/Trunked Talkgroup	Assignment	RX Freq	RX Tone/NAC	TX Freq	TX Tone/NAC	Mode A, D, M	Remarks
1	Command	NIFC C10	All Divisions	170.4125	162.2	165.9625	162.2	A	Tone 15 on English Peak
2	Command	NIFC C3	All Divisions	168.0750	162.2	170.4250	162.2	A	Tone 15 on Quartz lookout
3	Command	NIFC C66	All Divisions	170.3125	162.2	164.6250	162.2	A	Tone 15 on Whisky Butte
4	Command	NIFC C85	All Divisions	164.7750	162.2	172.6500	162.2	A	Tone 15 on Blue Ridge
5	Dispatch	Salmon	Back up Net	172.4000	0.0	164.1250	156.7	A	
6	Tactical	NIFC T3	DIV V/P	168.6000	162.2	168.6000	162.2	A	
7	Tactical	NIFC T5	DIV T	166.7250	162.2	166.7250	162.2	A	
8	Tactical	NIFC T6	DIV Kidder/S	166.7750	162.2	166.7750	162.2	A	
9	Tactical	NIFC T7	DIV M	168.2500	162.2	168.2500	162.2	A	
10	Tactical	R5 T4	DIV K	166.5500	162.2	166.5500	162.2	A	
11	Tactical	R5 T5	DIV H/Y	167.1125	162.2	167.1125	162.2	A	
12	Tactical	R5 T6	DIV A/D	168.2375	162.2	168.2375	162.2	A	
13	Air - Ground CMD	Air CMD	All Divisions	166.6750	0.0	166.6750	0.0	A	
14	Air - Ground Tac	Air Tac	All Divisions	169.0875	0.0	169.0875	0.0	A	
15/19	Air - Ground	CALCORD	All Divisions	156.0750	0.0	156.0750	156.7	A	AIR Medical
16/20	Emergency only	GUARD	All Divisions	168.6250	0.0	168.6250	110.9	A	AIR GUARD - emerg. use only

Prepared By (Communications Unit Leader)

Chris Perry, COML 530-467-1509



Incident Location

Etna, CA

County Siskiyou

Latitude, Longitude

41.4568250, -122.8684620

Division/Group Assignment List (ICS 204 WF)

1. Incident Name:		2. Branch:		3. Division/Group:		
SALMON AUGUST COMPLEX		III		WALLOW DIV S		
4. Operational Period: DAY						
Date/Time From: 09/07/2017 0700 THU		Date/Time To: 09/07/2017 1900 THU				
5. Operations Personnel:						
OPERATIONS CHIEF		MATT CONKLIN, LUKE KENDALL SCOTT PACKWOOD		BRANCH DIRECTOR		
				RANDY ENGLER DEANO ESADES (T)		
DIVISION/GROUP SUPERVISOR		JESSE MONTIJO TYLER C MCCOWAN (T)		AIR ATTACK SUPERVISOR		
				JOANN OVERACKER		
6. Resources Assigned (by Period):						
Strike Team / Task Force / Resource Designator		LWD	Leader	Number Persons	Drop Off PT./Time	Pick Up PT./Time
HC2I KLAMATH CREW 14 C-81		09/11	ANDREW ZINK	19	DP1/0800	DP1/1900
HC1 CREW 12 C-67		09/09	CHRISTIAN HANSON	22	DP1/0800	DP1/1900
ENG3 45 E-178 (KNF IA)		09/15	CHRIS GENTRY	5	DP1/0800	DP1/1900
WTS2 DOLCINI E-32		09/16	BOB ASWORTH	1	DP1/0800	DP1/1900
REMS 2 O-216		09/07	ZACHARY P SWANSON	2	DP1/0800	DP1/1900
EMPF O-224		09/09	DANIEL ANTHONY RODRIGUEZ	1	DP1/0800	DP1/1900
EMTF O-225		09/09	JACK CLAPP	1	DP1/0800	DP1/1900
SOF2 O-197		09/09	GLEN STAPLETON	1	DP1/0800	DP1/1900
EMTF O-226		09/09	DAVE WOODS	1	DP1/0800	DP1/1900
6. Control Operations/Work Assignments:						
DIV S Task/Purpose						
* Improve Sawyers Bar Road from DP1 to DP40. Prep for possible firing operations from DP1 to DP40. Evaluate for direct opportunities on Snoozers Ridge. Construct a combination of direct and indirect line with road prep to prevent natural fire spread east to Sawyers Bar Road.						
DIV S Endstate						
* Keep fire west of Sawyers Bar Road, and north of the PCT.						
7. Special Instructions:						
<ul style="list-style-type: none"> * Any prep on Pacific Crest Trail - see PCT guidelines. * ALL TRASH NEEDS TO BE REMOVED DAILY BY ALL RESOURCES. PACK IT IN, PACK IT OUT. * Be cognizant of archeological, heritage, and cultural sites. If found, leave undisturbed, flag, and notify the DIVS and READ. * Water drafting: utilize fish screens and avoid drafting from cold water tributary confluences from Salmon River. Utilize overhead fill stations when possible. * GPS all pump locations and provide coordinates to the Situation Unit and READ's. * All leaders and supervisors monitor A/G Command. * All dozers consult with READS before constructing lines and utilize ridges when constructing direct and indirect lines. * Avoid ground disturbance, including tree falling, in areas marked with white and orange stripped flagging. 						
8. Division/Group Communication Summary:						
Function	Channel	RX Frequency N/W	RX Tone/NAC	TX Frequency N/W	TX Tone/NAC	Mode
SEE REFERENCE						
9. Prepared By (Resource Unit Leader)		Approved By (Planning Section Chief)		Date	Time	
KERSHAW / CLARK (T) / DANIELS (T) / WHITE (T)		STEVE ANDERSON PSC2		09/06/2017	2100	

INCIDENT RADIO COMMUNICATIONS PLAN Incident Name: **Salmon August Complex** Date/Time Prepared: **9/6/17 1730** Operational Period Date/Time: **9/7/2017, 0700 to 9/8/17, 0700**

Zn / Ch	Function	Channel Name/Trunked Talkgroup	Assignment	RX Freq	RX Tone/NAC	TX Freq	TX Tone/NAC	Mode A, D, M	Remarks
1	Command	NIFC C10	All Divisions	170.4125	162.2	165.9625	162.2	A	Tone 15 on English Peak
2	Command	NIFC C3	All Divisions	168.0750	162.2	170.4250	162.2	A	Tone 15 on Quartz lookout
3	Command	NIFC C66	All Divisions	170.3125	162.2	164.6250	162.2	A	Tone 15 on Whisky Butte
4	Command	NIFC C85	All Divisions	164.7750	162.2	172.6500	162.2	A	Tone 15 on Blue Ridge
5	Dispatch	Salmon	Back up Net	172.4000	0.0	164.1250	156.7	A	
6	Tactical	NIFC T3	DIV V/P	168.6000	162.2	168.6000	162.2	A	
7	Tactical	NIFC T5	DIV T	166.7250	162.2	166.7250	162.2	A	
8	Tactical	NIFC T6	DIV Kidder/S	166.7750	162.2	166.7750	162.2	A	
9	Tactical	NIFC T7	DIV M	168.2500	162.2	168.2500	162.2	A	
10	Tactical	R5 T4	DIV K	166.5500	162.2	166.5500	162.2	A	
11	Tactical	R5 T5	DIV H/Y	167.1125	162.2	167.1125	162.2	A	
12	Tactical	R5 T6	DIV A/D	168.2375	162.2	168.2375	162.2	A	
13	Air - Ground CMD	Air CMD	All Divisions	166.6750	0.0	166.6750	0.0	A	
14	Air - Ground Tac	Air Tac	All Divisions	169.0875	0.0	169.0875	0.0	A	
15/19	Air - Ground	CALCORD	All Divisions	156.0750	0.0	156.0750	156.7	A	AIR Medical
16/20	Emergency only	GUARD	All Divisions	168.6250	0.0	168.6250	110.9	A	AIR GUARD - emerg. use only

Prepared By (Communications Unit Leader) **Chris Perry, COML 530-467-1509** Incident Location: **Etna, CA**
 County: Siskiyou Latitude, Longitude: 41.4568250, -122.8684620

Division/Group Assignment List (ICS 204 WF)

1. Incident Name		2.				
SALMON AUGUST COMPLEX		Branch: V	Division/Group: WALLOW DIV T			
3. Operational Period						
Date/Time From: 09/07/2017 0700 THU	Date/Time To: 09/07/2017 1900 THU					
4. Operations Personnel						
OPERATIONS CHIEF	MATT CONKLIN, LUKE KENDALL SCOTT PACKWOOD	BRANCH DIRECTOR	GREG OVERACKER RANDY JENNINGS (T)			
DIVISION/GROUP SUPERVISOR	AL WARD ROY JONES (T)	AIR OPERATIONS BRANCH DIRECTOR	JOANN OVERACKER			
5. Resources Assigned For Period						
Strike Team / Task Force / Resource Designator	LWD	Leader	Number Persons	Drop Off PT./Time	Pick Up PT./Time	
HC1 SALMON RIVER IHC CREW 4 C-3	09/10	WILLIAM M ROBINSON	19	DP40/0800	DP40/1900	
HC1 MENDOCINO IHC C-78	09/12	CHRISTOPHER R MARKEY	19	DP40/0800	DP40/1900	
HCS1 1176G C-69 ***	09/09	CHARLES HUNTER JR	22	DP40/0800	DP40/0800	
ES3 S/T 9110C E-10000	09/11	RICH DENNETT	20	DP40/0800	DP40/1900	
ENG3 AZ-WML - E911 E-63	09/08	JERRY MCGRAW	3	DP40/0800	DP40/1900	
ENG6 AZ-BHC 1017 E-88	09/08	MARVIN MCCABE	3	DP40/0800	DP40/1900	
WTS2 DOWLING, E-33	09/15	KIT KRIEK	2	DP40/0800	DP40/1900	
GRD JOHNSON E-140	09/11	JOHNSON	2	DP40/0800	DP40/1900	
CHIP T3 DIAMOND RD E-202	09/19	DWAYNE MOORE	1	DP40/0800	DP40/1900	
FALM NORTH ZONE MOD 23 - O-318	09/14	GARRET BROWN	2	DP40/0800	DP40/1900	
6. Branch/Group Communications Summary						
Friction	Channel	RX Frequency N/W	RX Tone/NAC	TX Frequency N/W	TX Tone/NAC	Mode
9. Prepared By (Resource Unit Leader)		Approved By (Planning Section Chief)		Date	Time	
KERSHAW / CLARK (T) / DANIELS (T) / WHITE (T)		STEVE ANDERSON PSC2		09/06/2017	2100	

INCIDENT RADIO COMMUNICATIONS PLAN

Incident Name

Salmon August Complex

Date/Time Prepared

9/6/17 1730

Operational Period Date/Time

9/7/2017, 0700 to 9/8/17, 0700

Zn / Ch	Function	Channel Name/Trunked Talkgroup	Assignment	RX Freq	RX Tone/NAC	TX Freq	TX Tone/NAC	Mode A, D, M	Remarks
1	Command	NIFC C10	All Divisions	170.4125	162.2	165.9625	162.2	A	Tone 15 on English Peak
2	Command	NIFC C3	All Divisions	168.0750	162.2	170.4250	162.2	A	Tone 15 on Quartz lookout
3	Command	NIFC C66	All Divisions	170.3125	162.2	164.6250	162.2	A	Tone 15 on Whisky Butte
4	Command	NIFC C85	All Divisions	164.7750	162.2	172.6500	162.2	A	Tone 15 on Blue Ridge
5	Dispatch	Salmon	Back up Net	172.4000	0.0	164.1250	156.7	A	
6	Tactical	NIFC T3	DIV V/P	168.6000	162.2	168.6000	162.2	A	
7	Tactical	NIFC T5	DIV T	166.7250	162.2	166.7250	162.2	A	
8	Tactical	NIFC T6	DIV Kidder/S	166.7750	162.2	166.7750	162.2	A	
9	Tactical	NIFC T7	DIV M	168.2500	162.2	168.2500	162.2	A	
10	Tactical	R5 T4	DIV K	166.5500	162.2	166.5500	162.2	A	
11	Tactical	R5 T5	DIV H/Y	167.1125	162.2	167.1125	162.2	A	
12	Tactical	R5 T6	DIV A/D	168.2375	162.2	168.2375	162.2	A	
13	Air - Ground CMD	Air CMD	All Divisions	166.6750	0.0	166.6750	0.0	A	
14	Air - Ground Tac	Air Tac	All Divisions	169.0875	0.0	169.0875	0.0	A	
15/19	Air - Ground	CALCORD	All Divisions	156.0750	0.0	156.0750	156.7	A	AIR Medical
16/20	Emergency only	GUARD	All Divisions	168.6250	0.0	168.6250	110.9	A	AIR GUARD - emerg. use only

Prepared By (Communications Unit Leader)

Chris Perry, COML 530-467-1509

[Signature]

Incident Location

Etna, CA

County Siskiyou

Latitude, Longitude

41.4568250, -122.8684620

Division/Group Assignment List (ICS 204 WF)

1. Incident/Event		2. Branch		3. Division/Group		
SALMON AUGUST COMPLEX		V		WALLOW DIV T		
2. Operational Period						
Date/Time From: 09/07/2017 0700 THU		Date/Time To: 09/07/2017 1900 THU				
4. Operations Personnel						
OPERATIONS CHIEF		MATT CONKLIN, LUKE KENDALL SCOTT PACKWOOD		BRANCH DIRECTOR		
				GREG OVERACKER RANDY JENNINGS (T)		
DIVISION/GROUP SUPERVISOR		AL WARD ROY JONES (T)		AIR OPERATIONS BRANCH DIRECTOR		
				JOANN OVERACKER		
5. Resources Assigned this Period						
Strike Team / Task Force / Resource Designator		LWD	Leader	Number Persons	Drop Off PT./Time	Pick Up PT./Time
FOBS O-10011		09/11	PETE L FELLER	1	DP40/0800	DP40/1900
FOBS O-10012		09/11	NOCHELLA OZARD	1	DP40/0800	DP40/1900
EMTP O-213		09/08	STEVE MORLOCK	1	DP40/0800	DP40/1900
EMTF O-214		09/08	DEREK LEONG	1	DP40/0800	DP40/1900
SOFR O-193		09/07	TODD OVERSHINER	1	DP40/0800	DP40/1900
SOFR O-353		09/15	SCOTT H WILSON (T)	1	DP40/0800	DP40/1900
AMBU MOUNTAIN MEDICS E-100		09/09	SEAN PROUTY	2	DP40/0800	DP40/1900
6. Control Operations/Work Assignments:						
<p>DIV T Task/Purpose</p> <p>* Construct indirect dozer line north east from Sawyers Bar Road up Jackass Ridge to Tanners Peak, continue east to Robinson Gulch. Prep from 40N41 Road to 40N51 Junction northeast to previous handline in northwest corner of Sec 7. Re-establish previous handlines from 40N41 connecting to 40N42, continue to construct handline to Sec 9 continuing along fires edge to wilderness boundary in Sec 34 to DP2. Prep 40N47 Road from DP2 to DIV T / DIV S break. Utilize combination of direct and indirect lines with road prep to prevent natural fire spread south to Sawyers Bar Road to previously constructed primary handlines.</p> <p>DIV T Endstate</p> <p>* Construction of previous handlines and indirect dozer line will be utilized to prevent natural fire spread south of fire and north of Sawyers Bar Communities.</p>						
7. Special Instructions:						
<p>*** 24 hour resources move to NIGHT in respective divisions after day shift.</p> <p>* ALL TRASH NEEDS TO BE REMOVED DAILY BY ALL RESOURCES. PACK IT IN, PACK IT OUT.</p> <p>* Be cognizant of archeological, heritage, and cultural sites; including vegetation associated with historic sites. If found, leave undisturbed, flag, and notify the DIVS and READ.</p> <p>* Water drafting: utilize fish screens and avoid drafting from cold water tributary confluences from Salmon River. Utilize overhead fill stations when possible.</p> <p>* Water tenders fill at DP 41 using the high volume pump.</p> <p>* Consult a READ or ARCH prior to any ground or vegetation disturbance in order to mitigate resource damage and noxious weed transportation.</p> <p>* GPS all pump locations and provide coordinates to the Situation Unit and READ's.</p> <p>* All leaders and supervisors monitor A/G Command.</p> <p>* All dozers consult with READS before constructing lines and utilize ridges when constructing direct and indirect lines.</p> <p>* Spike camp at Forks of Salmon.</p> <p>* Avoid ground disturbance, including tree falling, in areas marked with white and orange striped flagging.</p>						
8. Division/Group Communications Summary						
Frequency	Channel	RX Frequency N/W	RX Tone/NAC	TX Frequency N/W	TX Tone/NAC	Mode
SEE NEXT PAGE						
9. Prepared By (Resource Unit Leader)			Approved By (Planning Section Chief)		Date	Time
KERSHAW / CLARK (T) / DANIELS (T) / WHITE (T)			STEVE ANDERSON PSC2		09/06/2017	2100

INCIDENT RADIO COMMUNICATIONS PLAN Incident Name: **Salmon August Complex** Date/Time Prepared: **9/6/17 1730** Operational Period Date/Time: **9/7/2017, 0700 to 9/8/17, 0700**

Zn / Ch	Function	Channel Name/Trunked Talkgroup	Assignment	RX Freq	RX Tone/NAC	TX Freq	TX Tone/NAC	Mode A, D, M	Remarks
1	Command	NIFC C10	All Divisions	170.4125	162.2	165.9625	162.2	A	Tone 15 on English Peak
2	Command	NIFC C3	All Divisions	168.0750	162.2	170.4250	162.2	A	Tone 15 on Quartz lookout
3	Command	NIFC C66	All Divisions	170.3125	162.2	164.6250	162.2	A	Tone 15 on Whisky Butte
4	Command	NIFC C85	All Divisions	164.7750	162.2	172.6500	162.2	A	Tone 15 on Blue Ridge
5	Dispatch	Salmon	Back up Net	172.4000	0.0	164.1250	156.7	A	
6	Tactical	NIFC T3	DIV V/P	168.6000	162.2	168.6000	162.2	A	
7	Tactical	NIFC T5	DIV T	166.7250	162.2	166.7250	162.2	A	
8	Tactical	NIFC T6	DIV Kidder/S	166.7750	162.2	166.7750	162.2	A	
9	Tactical	NIFC T7	DIV M	168.2500	162.2	168.2500	162.2	A	
10	Tactical	R5 T4	DIV K	166.5500	162.2	166.5500	162.2	A	
11	Tactical	R5 T5	DIV H/Y	167.1125	162.2	167.1125	162.2	A	
12	Tactical	R5 T6	DIV A/D	168.2375	162.2	168.2375	162.2	A	
13	Air - Ground CMD	Air CMD	All Divisions	166.6750	0.0	166.6750	0.0	A	
14	Air - Ground Tac	Air Tac	All Divisions	169.0875	0.0	169.0875	0.0	A	
15/19	Air - Ground	CALCORD	All Divisions	156.0750	0.0	156.0750	156.7	A	AIR Medical
16/20	Emergency only	GUARD	All Divisions	168.6250	0.0	168.6250	110.9	A	AIR GUARD - emerg. use only

Prepared By (Communications Unit Leader) **Chris Perry, COML 530-467-1509** Incident Location: **Etna, CA** Latitude, Longitude: **41.4568250, -122.8684620**

Division/Group Assignment List (ICS 204 WF)

1. Incident Name:		2.				
SALMON AUGUST COMPLEX		Branch: V	Division/Group: WALLOW DIV V			
3. Operational Period: DAY						
Date/Time From: 09/07/2017 0700	THU	Date/Time To: 09/07/2017 1900	THU			
4. Operations Personnel						
OPERATIONS CHIEF	MATT CONKLIN, LUKE KENDALL SCOTT PACKWOOD	BRANCH DIRECTOR	GREG OVERACKER RANDY JENNINGS (T)			
DIVISION/GROUP SUPERVISOR	JASON FLORES	AIR OPERATIONS BRANCH DIRECTOR	JOANN OVERACKER			
5. Resource Assignment Period						
Strike Team / Task Force / Resource Designator	LWD	Leader	Number Persons	Drop Off PT./Time	Pick Up PT./Time	
HCS1 S/T 9243G C-10007 *** (SKU IA)	09/12	JOSHUA FAULKNER	30	DP60/0800	DP60/0800	
ES3 S/T 9262C E-10020 ***	09/12	SHANE EMRY	18	DP60/0800	DP60/0800	
WTT2 PJR E-10092	09/12	PAUL YOKOYAMA	1	DP60/0800	DP60/1900	
DZS2 S/T 9244L E-10027 ***	09/12	SHANE GALVEZ	5	DP60/0800	DP60/0800	
DOZ2 KNF 1 E-6 (KNF IA)	08/19	LANCE D TUPMAN	3	DP60/0800	DP60/1900	
DOZ2 2642 E-1 ***	09/17	VINCE ZEDIKER	2	DP60/0800	DP60/0800	
DOZ2 NORTHWESTERN E-10099	09/13	RON STEVENSON	1	DP60/0800	DP60/1900	
FOBS O-10009	09/11	RYAN WIMMER	1	DP60/0800	DP60/1900	
FOBS O-315	09/15	JOHN R HAMER	1	DP60/0800	DP60/1900	
6. Division/Group Communication Directory						
Function	Channel	RX Frequency N/W	RX Tone/NAC	TX Frequency N/W	TX Tone/NAC	Mode
SEE REVERSE						
9. Prepared By (Resource Unit Leader)						
KERSHAW / CLARK (T) / DANIELS (T) / WHITE (T)		Approved By (Planning Section Chief) STEVE ANDERSON PSC2		Date 09/06/2017	Time 2100	

INCIDENT RADIO COMMUNICATIONS PLAN

Incident Name

Saimon August Complex

Date/Time Prepared

9/6/17 1730

Operational Period Date/Time

9/7/2017, 0700 to 9/8/17, 0700

Zn / Ch	Function	Channel Name/Trunked Talkgroup	Assignment	RX Freq	RX Tone/NAC	TX Freq	TX Tone/NAC	Mode A, D, M	Remarks
1	Command	NIFC C10	All Divisions	170.4125	162.2	165.9625	162.2	A	Tone 15 on English Peak
2	Command	NIFC C3	All Divisions	168.0750	162.2	170.4250	162.2	A	Tone 15 on Quartz lookout
3	Command	NIFC C66	All Divisions	170.3125	162.2	164.6250	162.2	A	Tone 15 on Whisky Butte
4	Command	NIFC C85	All Divisions	164.7750	162.2	172.6500	162.2	A	Tone 15 on Blue Ridge
5	Dispatch	Salmon	Back up Net	172.4000	0.0	164.1250	156.7	A	
6	Tactical	NIFC T3	DIV V/P	168.6000	162.2	168.6000	162.2	A	
7	Tactical	NIFC T5	DIV T	166.7250	162.2	166.7250	162.2	A	
8	Tactical	NIFC T6	DIV Kidder/S	166.7750	162.2	166.7750	162.2	A	
9	Tactical	NIFC T7	DIV M	168.2500	162.2	168.2500	162.2	A	
10	Tactical	R5 T4	DIV K	166.5500	162.2	166.5500	162.2	A	
11	Tactical	R5 T5	DIV H/Y	167.1125	162.2	167.1125	162.2	A	
12	Tactical	R5 T6	DIV A/D	168.2375	162.2	168.2375	162.2	A	
13	Air - Ground CMD	Air CMD	All Divisions	166.6750	0.0	166.6750	0.0	A	
14	Air - Ground Tac	Air Tac	All Divisions	169.0875	0.0	169.0875	0.0	A	
15/19	Air - Ground	CALCORD	All Divisions	156.0750	0.0	156.0750	156.7	A	AIR Medical
16/20	Emergency only	GUARD	All Divisions	168.6250	0.0	168.6250	110.9	A	AIR GUARD - emerg. use only

Prepared By (Communications Unit Leader)

Chris Perry, COML 530-467-1509

Incident Location

Etna, CA


County Siskiyou

Latitude, Longitude

41.4568250, -122.8684620

Division/Group Assignment List (ICS 204 WF)

1. Incident Name:		2. Operational Period:		3. Operations Personnel:		
SALMON AUGUST COMPLEX		DAY		OPERATIONS PERSONNEL		
Date/Time From: 09/07/2017 0700 THU		Date/Time To: 09/07/2017 1900 THU		Branch: V		
				Division/Group: WALLOW DIV V		
OPERATIONS CHIEF		MATT CONKLIN, LUKE KENDALL SCOTT PACKWOOD		BRANCH DIRECTOR		
DIVISION/GROUP SUPERVISOR		JASON FLORES		GREG OVERACKER RANDY JENNINGS (T)		
				AIR OPERATIONS BRANCH DIRECTOR		
				JOANN OVERACKER		
4. Resources Assigned (See Page 2)						
Strike Team / Task Force / Resource Designator		LWD	Leader	Number Persons	Drop Off PT./Time	Pick Up PT./Time
FEMP O-438		09/14	RICHARD D BETHEL	1	DP60/0800	DP60/1900
FEMT O-486		09/20	DAVID DELGADO	1	DP60/0800	DP60/1900
FEMT O-485		09/20	JOSHUA MASSIE	1	DP60/0800	DP60/1900
SOFR O-251		09/11	MICHAEL TYRRELL	1	DP60/0800	DP60/1900
5. Control Operations/Work Assignments:						
DIV V Task/Purpose						
<p>* Improve Sawyers Bar Road and improve and connect 40N51 to Sawyers Bar Road and utilize as primary line. Continue to prep structures from Little North Fork to DIV break west of DP70. Construct dozer line from Sawyers Bar Road to Yellow Jacket Ridge to the 40N51 Road. Improvement to road, in combination of indirect line will prevent natural fire spread to south affecting the communities of Sawyers Bar. Construction of dozer line will be utilized as fire breaks that will aid to stopping fire spread.</p>						
DIV V Endstate						
<p>* Improvements to road and to previously existing lines will aid in preventing fire spread, south into the communities of Sawyers Bar.</p>						
6. Special Instructions:						
<p>* Protect rust resistant Sugar Pine Tree's in section 15 on Yellow Jacket Ridge. * Water drafting: utilize fish screens and avoid drafting from cold water tributary confluences from Salmon River. Utilize overhead fill stations when possible. * Consult a READ or ARCH prior to any ground or vegetation disturbance in order to mitigate resource damage and noxious weed transportation. Numerous cultural resources exist in this area, including vegetation associated with historic sites. * GPS all pump locations and provide coordinates to the Situation Unit and READ's. * All leaders and supervisors monitor A/G Command. * All dozers consult with READS before constructing lines and utilize ridges when constructing direct and indirect lines. * Prepare for spike camp at Forks of Salmon. * Avoid ground disturbance, including tree falling, in areas marked with white and orange stripped flagging.</p>						
7. Radio/In-Car Communication Summary						
Channel	Channel	RX Frequency N/W	RX Tone/NAC	TX Frequency N/W	TX Tone/NAC	Mode
SEE REFERENCE						
8. Prepared By (Resource Unit Leader)			Approved By (Planning Section Chief)		Date	Time
KERSHAW / CLARK (T) / DANIELS (T) / WHITE (T)			STEVE ANDERSON PSC2		09/06/2017	2100

INCIDENT RADIO COMMUNICATIONS PLAN		Incident Name		Date/Time Prepared		Operational Period Date/Time			
Salmon August Complex		Salmon August Complex		9/6/17 1730		9/7/2017, 0700 to 9/8/17, 0700			
Zn / Ch	Function	Channel Name/Trunked Talkgroup	Assignment	RX Freq	RX Tone/NAC	TX Freq	TX Tone/NAC	Mode A, D, M	Remarks
1	Command	NIFC C10	All Divisions	170.4125	162.2	165.9625	162.2	A	Tone 15 on English Peak
2	Command	NIFC C3	All Divisions	168.0750	162.2	170.4250	162.2	A	Tone 15 on Quartz lookout
3	Command	NIFC C66	All Divisions	170.3125	162.2	164.6250	162.2	A	Tone 15 on Whisky Butte
4	Command	NIFC C85	All Divisions	164.7750	162.2	172.6500	162.2	A	Tone 15 on Blue Ridge
5	Dispatch	Salmon	Back up Net	172.4000	0.0	164.1250	156.7	A	
6	Tactical	NIFC T3	DIV V/P	168.6000	162.2	168.6000	162.2	A	
7	Tactical	NIFC T5	DIV T	166.7250	162.2	166.7250	162.2	A	
8	Tactical	NIFC T6	DIV Kidder/S	166.7750	162.2	166.7750	162.2	A	
9	Tactical	NIFC T7	DIV M	168.2500	162.2	168.2500	162.2	A	
10	Tactical	R5 T4	DIV K	166.5500	162.2	166.5500	162.2	A	
11	Tactical	R5 T5	DIV H/Y	167.1125	162.2	167.1125	162.2	A	
12	Tactical	R5 T6	DIV A/D	168.2375	162.2	168.2375	162.2	A	
13	Air - Ground CMD	Air CMD	All Divisions	166.6750	0.0	166.6750	0.0	A	
14	Air - Ground Tac	Air Tac	All Divisions	169.0875	0.0	169.0875	0.0	A	
15/19	Air - Ground	CALCORD	All Divisions	156.0750	0.0	156.0750	156.7	A	AIR Medical
16/20	Emergency only	GUARD	All Divisions	168.6250	0.0	168.6250	110.9	A	AIR GUARD - emerg. use only
Prepared By (Communications Unit Leader)				Incident Location		Etna, CA		Latitude, Longitude	
Chris Perry, COML 530-467-1509				County		Siskiyou		41.4568250, -122.8684620	

Division/Group Assignment List (ICS 204 WF)

1. Incident Name						
SALMON AUGUST COMPLEX				Branch:	Division/Group:	
2. Operational Period						
Date/Time From: 09/07/2017 0700 THU				V	WALLOW DIV Y	
Date/Time To: 09/07/2017 1900 THU						
3. Operations Personnel						
OPERATIONS CHIEF		MATT CONKLIN, LUKE KENDALL SCOTT PACKWOOD		BRANCH DIRECTOR		GREG OVERACKER RANDY JENNINGS (T)
DIVISION/GROUP SUPERVISOR		ROB NOXON MARVIN VOLRIE (T)		AIR OPERATIONS BRANCH DIRECTOR		JOANN OVERACKER
4. Resources Assigned This Period						
Strike Team / Task Force / Resource Designator		LWD	Leader	Number Persons	Drop Off PT./Time	Pick Up PT./Time
HC1 MAD RIVER IHC C-44		09/07	CHARLES HAIR	19	DP70/0800	DP70/1900
HCS1 S/T 1185G C-70 ***		09/09	NICK EKINDJIAN	30	DP70/0800	DP70/0800
TASK FORCE 1 TFLD O-191		09/07	RYAN WAGGONER	1	DP70/0800	DP70/1900
-ENG3 SQF 46 E-75 (KNF IA)		09/08	EDDY AURELIO ROSALES	5	DP70/0800	DP70/1900
-ENG6 AZ-JRM 111 E-89		09/08	JOHN ROBERT BOUWMAN	2	DP70/0800	DP70/1900
-WTT2 ENF WT 235 E-160		09/13	DUFFLE	2	DP70/0800	DP70/1900
WTS2 PETERS E-174		09/17	MIKE PETERS	1	DP70/0800	DP70/1900
DOZ2 JOHNSON E-179 ***		09/17	JOHNSON, ROBERT	1	DP70/0800	DP70/0800
READ O-248		09/11	DAVID BOWDEN	1	DP70/0800	DP70/1900
READ O-110		09/14	SAMUEL COMMARTO	1	DP70/0800	DP70/1900
SOFR O-251		09/11	MICHAEL TYRRELL	1	DP70/0800	DP70/1900
6. Control Operations/Work Assignments:						
DIV Y Task/Purpose						
* Continue structure prep along Sawyers Bar Road including the town of Forks of Salmon. Scout road, connect DP70 road 40N51 northwest to DP75 the 2B01 road to use as indirect line for community defense. Prep for possible firing operations. Continue to prep DP75 to DP70 of Sawyers Bar Road as primary line to keep fire northeast of South Fork Road.						
DIV Y End State						
* Combination of indirect lines will aid in preventing continued fire spread west, affecting the community of Forks of Salmon.						
7. Special Instructions:						
*** 24 hour resources move to NIGHT in respective divisions after day shift.						
* Water drafting: utilize fish screens and avoid drafting from cold water tributary confluences from Salmon River. Utilize overhead fill stations when possible.						
* Consult a READ or ARCH prior to any ground or vegetation disturbance in order to mitigate resource damage and noxious weed transportation. Numerous cultural resources exist in this area, including vegetation associated with historic sites.						
* GPS all pump locations and provide coordinates to the Situation Unit and READ's.						
* All leaders and supervisors monitor A/G Command.						
* All dozers consult with READS before constructing lines and utilize ridges when constructing direct and indirect lines.						
* Prepare for spike camp at Forks of Salmon.						
8. Division/Group Communications Summary						
Priority	Channel	RX Frequency N/W	RX Tone/NAC	TX Frequency N/W	TX Tone/NAC	Mode
SEE SERVICE						
9. Prepared By (Resource Unit Leader)			Approved By (Planning Section Chief)		Date	Time
KERSHAW / CLARK (T) / DANIELS (T) / WHITE (T)			STEVE ANDERSON PSC2		09/06/2017	2100

INCIDENT RADIO COMMUNICATIONS PLAN Incident Name: **Salmon August Complex** Date/Time Prepared: **9/6/17 1730** Operational Period Date/Time: **9/7/2017, 0700 to 9/8/17, 0700**

Zh / Ch	Function	Channel Name/Trunked Talkgroup	Assignment	RX Freq	RX Tone/NAC	TX Freq	TX Tone/NAC	Mode A, D, M	Remarks
1	Command	NIFC C10	All Divisions	170.4125	162.2	165.9625	162.2	A	Tone 15 on English Peak
2	Command	NIFC C3	All Divisions	168.0750	162.2	170.4250	162.2	A	Tone 15 on Quartz lookout
3	Command	NIFC C66	All Divisions	170.3125	162.2	164.6250	162.2	A	Tone 15 on Whisky Butte
4	Command	NIFC C85	All Divisions	164.7750	162.2	172.6500	162.2	A	Tone 15 on Blue Ridge
5	Dispatch	Salmon	Back up Net	172.4000	0.0	164.1250	156.7	A	
6	Tactical	NIFC T3	DIV V/P	168.6000	162.2	168.6000	162.2	A	
7	Tactical	NIFC T5	DIV T	166.7250	162.2	166.7250	162.2	A	
8	Tactical	NIFC T6	DIV Kidder/S	166.7750	162.2	166.7750	162.2	A	
9	Tactical	NIFC T7	DIV M	168.2500	162.2	168.2500	162.2	A	
10	Tactical	R5 T4	DIV K	166.5500	162.2	166.5500	162.2	A	
11	Tactical	R5 T5	DIV H/Y	167.1125	162.2	167.1125	162.2	A	
12	Tactical	R5 T6	DIV A/D	168.2375	162.2	168.2375	162.2	A	
13	Air - Ground CMD	Air CMD	All Divisions	166.6750	0.0	166.6750	0.0	A	
14	Air - Ground Tac	Air Tac	All Divisions	169.0875	0.0	169.0875	0.0	A	
15/19	Air - Ground	CALCORD	All Divisions	156.0750	0.0	156.0750	156.7	A	AIR Medical
16/20	Emergency only	GUARD	All Divisions	168.6250	0.0	168.6250	110.9	A	AIR GUARD - emerg. use only

Prepared By (Communications Unit Leader) **Chris Perry, COML 530-467-1509** Incident Location: **Etna, CA**
 County: Siskiyou Siskiyou Latitude, Longitude: 41.4568250, -122.8684620

Division/Group Assignment List (ICS 204 WF)

1. Incident Name:		Branch:		Division/Group:		
SALMON AUGUST COMPLEX				NIGHT		
2. Operational Period:		NIGHT				
Date/Time From: 09/07/2017 1800 THU		Date/Time To: 09/08/2017 0700 FRI				
3. Operations Personnel:						
OPERATIONS CHIEF MICHAEL KOONTZ		BRANCH DIRECTOR				
DIVISION/GROUP SUPERVISOR JOHN D OWINGS TEMO BALTAZAR		AIR OPERATIONS BRANCH DIRECTOR		JOANN OVERACKER		
4. Resources Assigned This Period:						
Strike Team / Task Force / Resource Designator		LWD	Leader	Number Persons	Drop Off PT./Time	Pick Up PT./Time
ENG6 WEST METRO B9 E-84		09/08	JOSEPH WELTER	3	ICP/1900	ICP/0700
ENG6 AZ-A3S E-362 E-86		09/08	STEVE ESTELLE	1	ICP/1900	ICP/0700
ENG6 CRA - E0161 E-83		09/09	RICHARD RYAN LEBEAU	3	ICP/1900	ICP/0700
ENG6 SRA E1063 E-80		09/09	SEAN WHITE MOUNTAIN	3	ICP/1900	ICP/0700
ENG6 SRA E1061 E-81		09/09	AUSTIN HODGKISS	3	ICP/1900	ICP/0700
ENG6 AZ-FRY BR365 E-78		09/09	DENNIS FERREL	3	ICP/1900	ICP/0700
****24 HOUR RESOURCES TO REPORT TO NIGHT DIVISION****						
**** HCS1 1176G C-69 ****		09/09	CHARLES HUNTER JR	22	DP40/1900	DP40/0800
**** HCS1 S/T 9243G C-10007 ****		09/12	JOSHUA FAULKNER	30	DP60/1900	DP60/0800
**** HCS1 S/T 1185G C-70 ****		09/09	NICK EKINDJIAN	30	DP70/1900	DP70/0800
**** ES3 S/T 9262C E-10020 ****		09/12	SHANE EMRY	18	DP60/1900	DP60/0800
**** WTT2 HOFF VEST E-10070 ****		09/08	SCOTT VEST	2	DP6/1900	DP6/0800
**** WTT2 STATEWIDE E-10071 ****		09/08	STEVE RADDIGAN	2	DP6/1900	DP6/0800
**** DZS2 S/T 9244L E-10027 ****		09/12	SHANE GALVEZ	5	DP60/1900	DP60/0800
**** DOZZ 2642 E-1 ****		09/17	VINCE ZEDIKER	2	DP60/1900	DP60/0800
5. Division/Group Communication Summary:						
Function	Channel	RX Frequency N/W	RX Tone/NAC	TX Frequency N/W	TX Tone/NAC	Mode
SEE REVERSE						
9. Prepared By (Resource Unit Leader) <i>CK</i>		Approved By (Planning Section Chief) <i>Anderson</i>		Date	Time	
KERSHAW / CLARK (T) / DANIELS (T) / WHITE (T)		STEVE ANDERSON PSC2		09/06/2017	2100	

INCIDENT RADIO COMMUNICATIONS PLAN Incident Name: **Salmon August Complex** Date/Time Prepared: **9/6/17 1730** Operational Period Date/Time: **9/7/2017, 0700 to 9/8/17, 0700**

Zh / Ch	Function	Channel Name/Trunked Talkgroup	Assignment	RX Freq	RX Tone/NAC	TX Freq	TX Tone/NAC	Mode A, D, M	Remarks
1	Command	NIFC C10	All Divisions	170.4125	162.2	165.9625	162.2	A	Tone 15 on English Peak
2	Command	NIFC C3	All Divisions	168.0750	162.2	170.4250	162.2	A	Tone 15 on Quartz lookout
3	Command	NIFC C66	All Divisions	170.3125	162.2	164.6250	162.2	A	Tone 15 on Whisky Butte
4	Command	NIFC C85	All Divisions	164.7750	162.2	172.6500	162.2	A	Tone 15 on Blue Ridge
5	Dispatch	Salmon	Back up Net	172.4000	0.0	164.1250	156.7	A	
6	Tactical	NIFC T3	DIV V/P	168.6000	162.2	168.6000	162.2	A	
7	Tactical	NIFC T5	DIV T	166.7250	162.2	166.7250	162.2	A	
8	Tactical	NIFC T6	DIV Kidder/S	166.7750	162.2	166.7750	162.2	A	
9	Tactical	NIFC T7	DIV M	168.2500	162.2	168.2500	162.2	A	
10	Tactical	R5 T4	DIV K	166.5500	162.2	166.5500	162.2	A	
11	Tactical	R5 T5	DIV H/Y	167.1125	162.2	167.1125	162.2	A	
12	Tactical	R5 T6	DIV A/D	168.2375	162.2	168.2375	162.2	A	
13	Air - Ground CMD	Air CMD	All Divisions	166.6750	0.0	166.6750	0.0	A	
14	Air - Ground Tac	Air Tac	All Divisions	169.0875	0.0	169.0875	0.0	A	
15/19	Air - Ground	CALCORD	All Divisions	156.0750	0.0	156.0750	156.7	A	AIR Medical
16/20	Emergency only	GUARD	All Divisions	168.6250	0.0	168.6250	110.9	A	AIR GUARD - emerg. use only

Prepared By (Communications Unit Leader) **Chris Perry, COML 530-467-1509** Incident Location: **Etna, CA**
 County: **Siskiyou** Siskiyou Latitude, Longitude: **41.4568250, -122.8684620**

Division/Group Assignment List (ICS 204 WF)

1. Incident Name:		Branch:		Division/Group:		
SALMON AUGUST COMPLEX				NIGHT		
2. Operational Period: NIGHT						
Date/Time From: 09/07/2017 1800 THU		Date/Time To: 09/08/2017 0700 FRI				
3. Operating Personnel						
OPERATIONS CHIEF MICHAEL KOONTZ		BRANCH DIRECTOR				
DIVISION/GROUP SUPERVISOR JOHN D OWINGS TEMO BALTAZAR		AIR OPERATIONS BRANCH DIRECTOR		JOANN OVERACKER		
4. Resources Assigned (see Period)						
Strike Team / Task Force / Resource Designator		LWD	Leader	Number Persons	Drop Off PT./Time	Pick Up PT./Time
REMS XLC1 O-249		09/11	BRIAN V STIEN	2	ICP/1900	ICP/0700
-EMTF O-221		09/10	PATRICK M O'LEARY	1	ICP/1900	ICP/0700
-EMTF TBD		09/10		1	ICP/1900	ICP/0700
6. Control Operations/Work Assignments:						
<u>DIV Night Task/Purpose</u>						
* Patrol fire areas of Sawyers Bar Road from the community of Etna southwest to Forks of Salmon. Continue structure protection as needed.						
<u>DIV Night Endstate</u>						
* To prevent fire growth to south, from previous operational period.						
7. Special Instructions:						
*** 24 hour units from Div: TV/Y will report to NIGHT Division Supervisors.						
* Be cognizant of archeological, heritage, and cultural sites. If found, leave undisturbed, flag, and notify the DIVS and READ.						
* GPS all pump locations and provide coordinates to the Situation Unit and READ's.						
8. Division/Group Communication Summary						
Frequency	Channel	RX Frequency N/W	RX Tone/NAC	TX Frequency N/W	TX Tone/NAC	Mode
9. Prepared By (Resource Unit Leader)		Approved By (Planning Section Chief)		Date	Time	
KERSHAW / CLARK (T) / DANIELS (T) / WHITE (T)		STEVE ANDERSON PSC2		09/06/2017	2100	

INCIDENT RADIO COMMUNICATIONS PLAN Incident Name: **Salmon August Complex** Date/Time Prepared: **9/6/17 1730** Operational Period Date/Time: **9/7/2017, 0700 to 9/8/17, 0700**

Zn / Ch	Function	Channel Name/Trunked Talkgroup	Assignment	RX Freq	RX Tone/NAC	TX Freq	TX Tone/NAC	Mode A, D, M	Remarks
1	Command	NIFC C10	All Divisions	170.4125	162.2	165.9625	162.2	A	Tone 15 on English Peak
2	Command	NIFC C3	All Divisions	168.0750	162.2	170.4250	162.2	A	Tone 15 on Quartz lookout
3	Command	NIFC C66	All Divisions	170.3125	162.2	164.6250	162.2	A	Tone 15 on Whisky Butte
4	Command	NIFC C85	All Divisions	164.7750	162.2	172.6500	162.2	A	Tone 15 on Blue Ridge
5	Dispatch	Salmon	Back up Net	172.4000	0.0	164.1250	156.7	A	
6	Tactical	NIFC T3	DIV V/P	168.6000	162.2	168.6000	162.2	A	
7	Tactical	NIFC T5	DIV T	166.7250	162.2	166.7250	162.2	A	
8	Tactical	NIFC T6	DIV Kidder/S	166.7750	162.2	166.7750	162.2	A	
9	Tactical	NIFC T7	DIV M	168.2500	162.2	168.2500	162.2	A	
10	Tactical	R5 T4	DIV K	166.5500	162.2	166.5500	162.2	A	
11	Tactical	R5 T5	DIV H/Y	167.1125	162.2	167.1125	162.2	A	
12	Tactical	R5 T6	DIV A/D	168.2375	162.2	168.2375	162.2	A	
13	Air - Ground CMD	Air CMD	All Divisions	166.6750	0.0	166.6750	0.0	A	
14	Air - Ground Tac	Air Tac	All Divisions	169.0875	0.0	169.0875	0.0	A	
15/19	Air - Ground	CALCORD	All Divisions	156.0750	0.0	156.0750	156.7	A	AIR Medical
16/20	Emergency only	GUARD	All Divisions	168.6250	0.0	168.6250	110.9	A	AIR GUARD - emerg. use only

Prepared By (Communications Unit Leader) **Chris Perry, COML 530-467-1509** Incident Location: **Etna, CA** County: **Siskiyou** Siskiyou Latitude, Longitude: **41.4568250, -122.8684620**

AIK OPERATIONS SUMMARY

PREPARED BY: JoAnn Overacker *JoAnn Overacker* PREPARED DATE/TIME: 09/06/17 1800

1. INCIDENT NAME: Salmon August Complex

2. OPERATIONAL PERIOD DATE: 09/07/17 START TIME: 0700 END TIME: 2100 SUNRISE: 0642 SUNSET: 1936

NOTE: AIRCRAFT CAN BE SHARED BETWEEN COMPLEXES

3. REMARKS (Safety Notes, Hazards, Air Operations Special Equipment, etc)

Limited visibility due to smoke. Avoid flying over the Mule team

Notify tower in Scott Valley at 7 NM before entering airport

Be aware of lightning and high winds throughout the operational period.

4. MEDEVAC A/C:
H-407 available at the Mott Heilbase for hoist
See Medical Plan

5. TFR: 7/5555
Altitude: to and including 1100 feet MSL
Polygon: See NOTAM
TFR Frequency: 118.175

6. PERSONNEL	Phone	7. FREQUENCIES	AM	FM	8. FIXED-WING	# Avail / Type/ Make-Model / FAA N# / Base(s)
AOBD: JoAnn Overacker	209-559-1617	Air to Air TFR (A-10)	118.175		Airtankers Lead Planes	Filled by request
ATGS: Dave Phillips	209-770-0517	Air to Air RW (A-)	127.125		ATGS Aircraft	Order Air Attack 9CP through Yreka Dispatch
HLCO: Scott Smith	530-307-9171	Air Tactics (A-9)		172.1125		
HEB1: Bill Lampert	530-598-4128	Air to Ground Command (A-11)		166.6750		
HEB1(T): Mary Owen	601-917-2860	Air to Ground Tactical (A-18)	169.0875	169.0875	Misc	Scott Valley Heilbase 530-468-1294/Fax2118 Scott Valley Heilbase Mgr. 530-598-4128 Scott Valley Unicorn 122.8 Scott Valley Temp Tower 128.625 Kidder MRP: Steve 909-493-8690 WT's E-175 Johnson, E-34 Cadillac Ridge, E. Cattaneo. E-10013 Dara Logging, TowerTech --A-114
		Deck		163.100		

9. HELICOPTERS

HELICOPTERS: Salmon August Complex

CALL SIGN	TY	MAKE/MODEL	BASE	AVAIL	START	REMARKS	CALL SIGN	TY	MAKE/MODEL	BASE	AVAIL	START	REMARKS
H-510(A-14)	2	Bell 205	Scott Valley	0900	0800	Bucket (Salmon)	25M (A-)	1	S-64	Scott Valley	0900	0800	Tank (Salmon)
OVR (A-23)	3	Astar	Scott Valley	0900	0800	Recon/HELCO (Salmon)	726	3	Bell 206BIII	Scott Valley			Enroute from So
1KA (A-85)	1	KMAX	Scott Valley	0900	0800	Bucket (Salmon)							

10. MISSIONS

Water and Retardant Drops, Cargo and recons as requested

Back Haul from Div A - Notify Mike Journey, Mule coordinator before flying at 530-598-2081

Klump Pump Available in Cargo when requested.

INCIDENT RADIO COMMUNICATIONS PLAN

Incident Name

Salmon August Complex

Date/Time Prepared

9/6/17 1730

Operational Period Date/Time

9/7/2017, 0700 to 9/8/17, 0700

Zn / Ch	Function	Channel Name/Trunked Talkgroup	Assignment	RX Freq	RX Tone/NAC	TX Freq	TX Tone/NAC	Mode A, D, M	Remarks
1	Command	NIFC C10	All Divisions	170.4125	162.2	165.9625	162.2	A	Tone 15 on English Peak
2	Command	NIFC C3	All Divisions	168.0750	162.2	170.4250	162.2	A	Tone 15 on Quartz lookout
3	Command	NIFC C66	All Divisions	170.3125	162.2	164.6250	162.2	A	Tone 15 on Whisky Butte
4	Command	NIFC C85	All Divisions	164.7750	162.2	172.6500	162.2	A	Tone 15 on Blue Ridge
5	Dispatch	Salmon	Back up Net	172.4000	0.0	164.1250	156.7	A	
6	Tactical	NIFC T3	DIV V/P	168.6000	162.2	168.6000	162.2	A	
7	Tactical	NIFC T5	DIV T	166.7250	162.2	166.7250	162.2	A	
8	Tactical	NIFC T6	DIV Kidder/S	166.7750	162.2	166.7750	162.2	A	
9	Tactical	NIFC T7	DIV M	168.2500	162.2	168.2500	162.2	A	
10	Tactical	R5 T4	DIV K	166.5500	162.2	166.5500	162.2	A	
11	Tactical	R5 T5	DIV H/Y	167.1125	162.2	167.1125	162.2	A	
12	Tactical	R5 T6	DIV A/D	168.2375	162.2	168.2375	162.2	A	
13	Air - Ground CMD	Air CMD	All Divisions	166.6750	0.0	166.6750	0.0	A	
14	Air - Ground Tac	Air Tac	All Divisions	169.0875	0.0	169.0875	0.0	A	
15/19	Air - Ground	CALCORD	All Divisions	156.0750	0.0	156.0750	156.7	A	AIR Medical
16/20	Emergency only	GUARD	All Divisions	168.6250	0.0	168.6250	110.9	A	AIR GUARD - emerg. use only

Prepared By (Communications Unit Leader)

Chris Perry, COML 530-467-1509

Incident Location

Etna, CA

County Siskiyou Latitude, Longitude 41.4568250, -122.8684620



Health & Safety Message

Incident: Salmon August Complex CA-KNF-006081	Date/Op Period: Day/Night Shift Thursday, 9/7-8/17
---	--

Hazards & Risks

DRIVING & TRAFFIC: SLOW DOWN !!!!

Local Law Enforcement and the CHP will be monitoring the roads in Etna and SR Highway 3 for speeding fire traffic. They have received several complaints from locals regarding speeding engines and utility vehicles traveling along Collier Rd. and Main St. in Etna.

Fire Camp Safety: We usually don't think of Fire Camp as a dangerous place but camp has a few hazards to look out for:

- Trip hazards such as stairs, tent stakes, cables and wires are abundant.
- Vehicle traffic in and around parking areas and driving through camp.
- Electrical shock from all the power cords and power strips plugged in our tents, kitchen area, hand wash stations and shower unit.
- Wildlife and insects.
- Walking and talking or texting on our cell phones.
- Sharp objects such as scissors, tacks, saws and nails.
- Adverse weather; to name just a few Fire Camp Watch Outs.

So pay attention to your surroundings and avoid distractions!

Chipper Operations: Loud, noisy chippers can be a distraction. Assign cutters, draggers & feeders of the beast. Watch where the chip-spray nozzle is being pointed. Have traffic control in place and road guards posted if working along a roadway. Be careful of loose clothing!! Use a trained and qualified operator.

Fire Order of the Day: #6: Be alert. Keep calm. Think clearly. Act decisively.

Paul Tompkins SOFR2

L. Lookouts C. Communications E. Escape Routes S. Safety Zones
BE MINDFUL



Severe Weather Precautions

Predicted fire weather in the next few days may result in severe weather and dry or wet thunderstorms. You may think more about sudden reverses in wind direction, increases in wind speed, and sharp drops in temperature. However don't forget **lightning!** It can be part of the rain, hail and wind observed during a severe weather event. Lightning can strike miles ahead of storm clouds. If lightning is in your area, share that observation and follow the "30/30 rule" that is described below and in your IRPG on page 21.

What Is The 30/30 Rule?

If you see lightning and hear the thunderclaps within 30 seconds of the flash, that means lightning is dangerously close to you and you should take precautions. Mitigate your personal exposure risk and act to protect facilities, equipment/computers from damage.

Do not resume work in exposed areas until after lightning activity has passed, including ICP. Usually, storms and lightning threat will pass in about ½ hour.

Thunderstorm/Lightning precaution measures:

- Listen for weather updates and special announcements. Acknowledge them. Share the information. If threatened, take shelter in a vehicle or building if possible.
- If outdoors, find a low spot away from tall trees, metal fences, utility lines and other elevated conductive objects (be mindful of flash flooding).
- If in a uniform wooded area, move to an area with shorter trees.
- Keep your distance from isolated trees, antennae's, towers (stay twice their height away).
- Stay away from ridge tops, open areas, water, ledges or rock screens.
- If in open country, crouch low to minimize your contact with the ground; If you feel your skin tingle, hair stand up, or smell ozone (smells like chlorine), immediately crouch low to the ground with feet together. You can sit on your pack. Never lay flat on the ground.
- Don't group together, stay separated.
- Don't operate land line telephones, computers, machinery or electric motors.
- Don't handle flammable materials in open containers or metal hand tools.

Plan for severe weather – React to protect yourself and incident resources – Return to work

INCIDENT SAFETY ANALYSIS 215a

Salmon August Complex - Thursday, September 7, 2017

8. Location	9. Hazard	6. Control or Abatement Action (Engineering, Administrative, PPE, Avoidance, Education, etc)
Kidder V/Y	Structure Protection & HAZMAT	Review "Wildland Urban Interface" Watch outs in the IRPG. Use "Structure Assessment" checklist in your IRPG. Follow "HAZMAT Incident Operations" in the IRPG.
ALL	Extreme Fire Behavior	Share weather observations with all personnel assigned to division. Establish "Trigger Points" to withdraw. Use "Risk Management" process prior to engaging in suppression actions found in the IRPG.
ALL	Hazard Trees	Follow "Hazard Tree Safety" guidelines in the IRPG. Post lookouts, or use a spotter in mop-up areas with personnel. Don't park vehicles or take breaks in high concentrations of hazard trees. Establish trigger points for disengagement during high wind events. Remember that the hazard zone extends a minimum of 2 1/2 tree heights.
ALL	Air Operations	Follow "Aviation Watch-Out Situations" found in the IRPG. Don't plan on air resources for medical transport or resupply. Refer to IRPG for directing bucket drops. Ensure positive communication with all air resources.
ALL	Spike Camp/Coyote	Keep a clean camp. Ensure communications are in place. Review and observe "Line Spike" considerations found in the IRPG.
ALL	Indirect Fireline	Post lookouts, identify escape routes and safety zones. Review "Strategy/Indirect Attack" found in the IRPG.
ALL	Steep Terrain & Rolling Debris	Maintain 8'-10' spacing when working & walking. Don't work above any personnel. Be on the lookout for rolling rocks, debris, or burning material. Evaluate necessity to send personnel in areas with limited access. Post lookouts maintain LCES.
ALL	Spot Fires	Size up prior to engagement. Watch for multiple spot fires. Ensure LCES is in place. Maintain situational awareness at all times.
ALL	Communications	Maintain communication with aviation resources, and suppression organization. Ensure all know frequency and protocol for contacting resources. Utilize the ICS 205. Utilize human repeaters when working in dead spots.
ALL	Heavy Equipment Operations	Establish communications with operators. Use hand signals if other communications are unavailable. Maintain a 50'-100' exclusion area around equipment and increase it to 1 1/2 times tree height when in timber. Use a spotter when backing. Avoid working below heavy equipment.
ALL	Fatigue & Over Exertion	Drink 1 quart of water each hour during and after work. Rotate crews out of smoky areas. Set a reasonable work pace and allow adequate rest breaks while on the project. Stagger work crews start time to limit fatigue. Use buddy system to monitor personnel of heat related and fatigue issues. Follow work / rest guidelines.

INCIDENT SAFETY ANALYSIS 215a

ALL	Heat Related Illness (HRI)& Dehydration	<p>Drink fluids throughout operational period (6-8 qts/shift). Maintain water/electrolyte ratio of 3 to 1. Carry extra water on line and cache water at drop points. Take frequent breaks, minimum of 10 minutes every hour. Allow out of area resources time to acclimatize before expecting peak performance. Recognize symptoms of HEAT RELATED ILLNESS which include:</p> <ul style="list-style-type: none"> o Lack of energy o Headaches, dizziness o Lack of rest o No hunger, poor eating habits o Hot skin, and lack of sweating
ALL	Environmental Hazards	<p>Be alert for rattlesnakes, watch footing and hand placement around rocks. Check yourself for ticks. Watch for biting and stinging insects. Be alert for bears, cougars and other wildlife. Be aware of poison oak, seek treatment at the medical trailer if exposed.</p>
ALL	Firing Operations & Devices	<p>A written guideline shall be prepared and approved for major burning operations. Conduct thorough briefing for all personnel. Qualified personnel for all firing operation assignments. Utilize Risk Mgmt. Process. Establish LCES prior to implementing burning operations. Assign an over-all Firing Boss to coordinate ignitions when simultaneous burning operations are planned for multiple locations.</p>
	Pack Train Operations	<p>Do's, when pack mules are approaching you, move the crews preferably to the downhill side of the road. Do's, take all tools to the same side of the road as the crews. Don't, sneak up from behind a mule, make it known you are approaching the pack mule line. Don't move up to quickly to the mules, mules startle easily. Don't confront, feed or approach mules without permission from one of the mule team members.</p>
All	Chipper Operations	<p>Ensure JHA is provided and signed by operators. Only qualified personnel will feed the chipper. Ensure appropriate PPE is used including eye and hearing protection.</p>
All	UTV Operations	<p>Assure an ATV/UTV is the best tool for the job. Use only Agency approved and inspected vehicle. All personnel are in required PPE. Use restraints provided. Check for brush debris buildup inside/outside ATV and remove if present. Use proper tie downs (4 per load) and discuss load management to not overload vehicles. Be sure fire extinguishers and first aid kit present. Have a way to fix a flat.</p>
All	Driving	<p>Drive slowly, watch for livestock and wildlife. Utilize slow speeds when experiencing poor visibility due to smoky conditions. Slow down when driving through local communities. Watch for deteriorating road conditions.</p>
A,D,H, K,M	Mop-up & Repair	<p>Do not work above or below personnel during rehab/mop-up operations. Alert crew personnel of rolling debris by yelling to affected individuals. Position debris that could roll vertically on slope. Wear eye protection.</p>
All	Thunderstorms and Lightning activity	<p>Take shelter in a vehicle. Move to an area with shorter trees. Don't stay on ridgetops. Don't group together. Review Thunderstorms Safety in the IRPG.</p>

MEDICAL PLAN	1. INCIDENT NAME Salmon August Complex	2. DATE PREPARED 9/6/17	3. TIME PREPARED 1600	4. OPERATIONAL PERIOD 9/07/17- 9/08/2017 0700-0700				
5. INCIDENT MEDICAL AID STATIONS								
MEDICAL AID STATIONS	LOCATION	PARAMEDICS						
		YES	NO					
Frontline Medical	Salmon ICP	X						
6. TRANSPORTATION								
A. Air Ambulances								
NAME	ADDRESS	PHONE	PARAMEDICS					
			YES	NO				
LifeNet – PHI – Reach [Type III- ALS, Day/Night] Air Ambulance with flight nurse	[YICC: 530-842-3515] at Redding, CA	Salmon Communications	X					
Kern County H-407 [Type II- ALS, Day/Night/Hoist] Rescue ONLY, requires patient transfer	[FICC: 707-726-1266] at Dunsmuir, CA	Salmon Communications	X					
California Highway Patrol [Type III- ALS, Day Hoist] Rescue ONLY, requires patient transfer	[YICC: 530-842-3515] at Redding, CA	Salmon Communications	X					
B. Ground Ambulances								
Salmon Ambulance 1 [4x4, Fireline Qualified]	Assigned to DIVS/DP's by Operations	Salmon Communications	X					
Etna Ambulance [Non-Fireline Qualified]	Local 9-1-1 Service in Etna, CA	Salmon Communications	Varies					
7. HOSPITALS								
NAME	ADDRESS	TRAVEL TIME		PHONE	HELIPAD		BURN CENTER	
		AIR	GRND		YES	NO	YES	NO
Fairchild Medical Center L-4 Trauma	444 Bruce St. Yreka, CA Lat:41*43.201'N Long:122*38.757' W	20m	75m	ER:530-841-6292	X			X
Rogue Valley Med Center L-2 Trauma-STEMI-CVA	2825 E. Barnett Rd. Medford, OR Lat:42*19.079'N Long:122*49.904' W	40m	2h	ER:541-789-7132	X			X
Mercy Med Center Redding L-2 Trauma-STEMI-CVA	2175 Rosaline Ave. Redding, CA Lat:40*34.334'N Long:122*23.798 W	40m	3h	ER:530-225-7201	X			X
UC Davis Medical Center L-1 Trauma-STEMI-CVA	2315 Stockton Blvd. Sacramento, CA Lat:38*33.290'N Long:121*27.311'	2h	5h	ER:916-734-5669 Burn: 916-734-3636	X		X	
8. MEDICAL EMERGENCY PROCEDURES								
9-LINE Medical Incident Report (pages 108-109 of the IRPG) 1. Advise Division on Tac. Division contact Salmon Communications on Command . If unable to reach Division go direct to Salmon Communications on Command . a. If life threatening, request frequency be cleared for emergency traffic 2. Incident Status: a. Nature of injury/illness? b. Identify on-scene IC/Point of Contact c. Identify on-scene care provider, request one if needed 3. Initial patient assessment a. Refer to Injury Reporting Worksheet 4. Determine severity and transport priority 5. Develop transport plan a. Air/Ground, Need for hoist 6. Determine need for additional resources 7. Confirm Communications 8. Evacuation Location: a. GPS (WGS84) or landmarks b. ETA to Evacuation Location 9. Contingency Plan In Camp Emergency: FRONTLINE MEDICAL TRAILER or Contact Salmon Communications on Command					INJURY REPORTING PROCEDURES NATURE OF INJURY _____ LOCATION OF PATIENT _____ TRANSPORTATION REQUESTED BY: AIR ___ GROUND ___ POINT OF PICKUP _____ LAT _____ LONG _____ PATIENT UNIT ID _____ <small>REMINDER: DO NOT GIVE PT NAME OVER RADIO</small> IS A EMT WITH PATIENT: YES ___ NO ___ AGE _____ SEX: MALE ___ FEMALE ___ ALL EMERGENCIES—Secure the area and identify witnesses for later investigation. Keep an accurate log of events.			
ICS 206 8-78	9. PREPARED BY (MEDICAL UNIT LEADER) Gena Fowlkes MEDL	10. REVIEWED BY (SAFETY OFFICER) James Aragon/Paul Tompkins SOF2						

Orleans Complex

INCIDENT RADIO COMMUNICATIONS PLAN (ICS 205)

Orleans Complex

1. Incident Name:		2. Date/Time Prepared:		3. Operational Period:		Date/Time To:				
ORLEANS COMPLEX		09/02/2017 1828		DAY/MONTH SUN		09042017 0000 MON				
4. Radio Channel User:										
Zone Group	CA #	Function	Channel Name/Trunked Radio System Tag/Group	Assignment	RX Freq	RX Tone/NAC	TX Freq	TX Tone/NAC	Mode (A.D., or M)	Remarks
	1	TACTICAL	NFPC T1	NIGHT / ROAD	168.0500 N	138.5	168.0500 N	138.5	A	
	2	TACTICAL	NFPC T2	REPAIR	168.2000 N	138.5	168.2000 N	138.5	A	
	3	TACTICAL	NFPC T3	STRUCTURE GRP	168.0000 N	138.5	168.0000 N	138.5	A	
	4	TACTICAL	NFPC T5	UNASSIGNED	166.7250 N	138.5	166.7250 N	138.5	A	
	5	TACTICAL	NFPC T6	NORTH GRP	166.7750 N	138.5	166.7750 N	138.5	A	
	6	TACTICAL	NFPC T7	SOUTH GRP	168.2500 N	138.5	168.2500 N	155.5	A	
	7	COMMAND	CMD 7	EAST ZONE	168.6125 N	138.5	168.4900 N	138.5	A	UKONOM MIT LINK TO 08 NFPC C1
	8	COMMAND	CMD 8	OUT OF SERVICE	170.8175 N	138.5	166.5750 N	138.5	A	Out of Service
	9	COMMAND	CMD 9	EAST ZONE	173.0625 N	138.5	166.1250 N	138.5	A	ORLEANS MIT LINK TO 07 NFPC C58
	10	ALT CMD	SFR FOREST	ALT CMD	172.3750 N	0.0	164.1750 N	147.9	A	SFR FOREST UKONOM
	11	ALT CMD	SFR ADM	ALT CMD	170.4750 N	0.0	165.7500 N	146.2	A	SFR ADMIN ORLEANS
	12	ALT CMD	KNF FOREST	ALT CMD	171.6250 N	167.9	168.4125 N	138.5	A	KNF FOREST UKONOM
	13	AG CMD	AG CMD	OPS & DVS	168.2000 N	0.0	168.2000 N	0.0	A	
	14	AG TAG	AG TAG	ALL DVS	167.0625 N	0.0	167.0625 N	0.0	A	
	15	TACTICAL	CALCORD	MEDICAL TAG	168.0750 N	156.7	168.0750 N	156.7	A	MEDICAL EVAC- TONE 6
	16	AIR GUARD	AIR GUARD	EMERGENCY	168.6250 N	0.0	168.6250 N	110.9	A	AIR GUARD- EMERG. USE ONLY TONE 1
5. Special Instructions:										
Communication Photo Number (916) 393-2442 CONTROLLED UNCLASSIFIED INFORMATION/RASC										
6. Prepared By				Name: DON STONER						
ICS 205				Signature:						
				Date/Time: 09022017 1828						

RESOURCE ADVISOR MESSAGE

PLEASE WATCH OUT FOR:

https://en.wikipedia.org/wiki/Picea_breweriana

Brewers spruce: Also called weeping spruce, it most closely resembles a very droopy Douglas-fir. This species only occurs in the Klamath-Siskiyou Mountains, between the Trinity and Kalmiopsis wildernesses. It grows in rocky high-elevation sites, typically above 4000' elevation. It is easily killed by fire or excess mechanical damage. Please do not cut down. Limbing of lower branches is acceptable, if necessary.

Invasive plants: Species in the area include yellow star thistle, marlahand mustard (dyers woad), spotted knapweed and Scotch Broom. Weedy plants introduced from other countries and continents can take over and change our native ecosystems (think blackberry on the west coast, cheat grass on the east side). Invasive plants will be flagged with orange flagging with "INVASIVE SPECIES" written in black. If you're working around these species, please clean off your clothing and equipment afterward.

HUMAN WASTE MANAGEMENT ON BACKCOUNTRY DIVISIONS

DO's

On the line – Find an area at least 50' away from trails and 200' from streams and lakes and dig a hole, known as a cat hole, about 6" deep. Do your business and bury the evidence.

Spike camps – Utilize latrines to manage human waste. Dig a trench 18"-24" deep, about a shovel blade wide, and as long as you think you will need. Start at one end and "work" your way to the other. Use minimal dirt to cover your poo so that it lasts as long as possible. You can't make a latrine bigger after it's used, so plan ahead!

Recommendations for latrines - Keep a "bathroom key" in plain view, so that others know when it is occupied. Use a piece of pink flagging tied across the access and put it up when you go in. Flag your route to the latrine so you don't spend time looking when you need to go. Keep a couple rolls of TP and hand sanitizer near the latrine. A small tin can or similar is nice to have to scoop a little dirt when you're done. Keep any rocks you excavate during construction and place them on top when you finally backfill your latrine when it is full or your camp or crew moves on. If you are really fancy, take some logs and set up a sitting log or two for comfort.

DON'T's!!!

Don't go number 2 on the surface of the ground. Seriously, It is unsanitary and unprofessional.

Don't use cat holes around spike camps or other areas that will be impacted for a long time or by a lot of people. You will run out of room at some point, and you won't have a system for letting others know when you have to go.

Don't bury trash or anything other than TP along with your waste.

Keep it professional and keep our wilderness clean. Thank you!



Human Resource Message

Don't put your head in the sand and ignore what is happening around you



Just as accident rates increase when you become a little complacent, so do human resource contacts and complaints of inappropriate behavior, harassment, and discrimination.

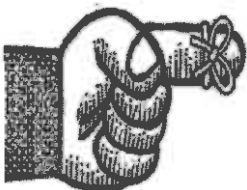
Avoid Complacency

Shawn Holden / Mark Weiss

Training Specialist Message



Scan the QR code to check in or come by and see TNSP Greg White or Teresa Beuerman (t) for a hard copy ...



DON'T FORGET! Prior to DEMOB all trainees **MUST** close out with the training specialist with a completed individual performance rating (ICS 225) and your task book in hand.

CAL FIRE

FINANCE/LOGISTICS MESSAGE

- TIME UNIT AND COMP/CLAIMS UNIT ARE LOCATED HERE AT BASE CAMP ON THE WEST END OF TRAILER ROW. CAL FIRE RESOURCES AS WELL AS ANY HIRED EQUIPMENT ON AN 10,000 SERIES NUMBER CHECK IN WITH TIME IF YOU HAVEN'T TURNED IN ANY DOCUMENTS. ANY CLAIMS ISSUES WILL NEED DOCUMENTATION ON AN ICS-213 AS WELL AS PICTURES.
- ACCOMODATIONS IS LOCATED AT YREKA HQ TRAINING ROOM, 1809 FAIRLANE ROAD, YREKA, CA 96097.
- ALL GOLF STRIKE TEAMS WILL CONTINUE TO FEED AT DEADWOOD CAMP AS WELL AS SACK LUNCH NEEDS. ALL CHARLIE AND LIMA STRIKE TEAMS, AS WELL AS OVERHEAD, WILL CONTINUE TO FEED AT BASE CAMP AS WELL AS SACK LUNCH NEEDS.
- **ALL CAL FIRE RESOURCES ON 24 HOURS OFF SHIFT WILL FEED FOR BREAKFAST AT BASE CAMP, TAKE SACK LUNCHES TO ACCOMODATIONS AND OFF-SITE FEEDING IS AVAILABLE FOR DINNER. FOR 9-7-2017, DINNER WILL BE PROVIDED AT CASA RAMOS & BRANDING IRON. FOR 9-8-2017, DINNER WILL BE PROVIDED AT CASA RAMOS & BLACK BEAR.**
- ALL SUPPLIES FOR GOLF STRIKE TEAMS WILL BE TAKEN CARE OF THROUGH THE YREKA HEADQUARTERS SERVICE CENTER. PLEASE SEE LAST BULLET POINT OF THIS PAGE REGARDING CHAIN SAW PARTS & SUPPLIES.
- ANY E# OR O# WITH A REQUEST NUMBER LESS THAN 9999 WILL RESUPPLY AT ETNA BASE CAMP. IF THAT RESOURCE NEEDS CAL FIRE SPECIFIC SUPPLY ITEMS I.E. YELLOW NOMEX, GLOVES, GOGGLES, ETC., WILL GO TO SUPPLY AT ETNA BASE CAMP WITH THEIR ICS-213. SUPPLY WILL UTF THE CAL FIRE SPECIFIC ITEMS AND ISSUE A FEDERAL S# IN THE 29000 SERIES. ALL ICS-213 FORMS WILL INDICATE "FEDERAL MISSION" OR "CAL FIRE MISSION".
- ANY E# OR O# GREATER THAN 10000 WILL RESUPPLY AT ETNA BASE CAMP. IF THAT RESOURCE THAT NEEDS CAL FIRE SPECIFIC SUPPLY ITEMS I.E. YELLOW NOMEX, GLOVES, GOGGLES, ETC., WILL GO TO SUPPLY AT ETNA BASE CAMP WITH THEIR ICS-213. SUPPLY WILL UTF THE CAL FIRE SPECIFIC ITEMS AND THE RESOURCE WILL THEN TAKE THE FORM TO THE YREKA HEADQUARTERS SERVICE CENTER FOR THOSE SPECIFIC ITEMS. ALL ICS-213 FORMS WILL INDICATE "CAL FIRE MISSION".
- REGARDING CHAINSAWS, ALL RESOURCES WILL GO THROUGH SUPPLY WITH THEIR ICS-213. SUPPLY WILL APPROVE OR DENY REQUEST. IF IT IS APPROVED, THE RESOURCE WILL SUBMIT THE ICS-213 TO THE CHAINSAW REPAIR VENDOR. ALL ICS-213 FORMS WILL INDICATE "FEDERAL MISSION" OR "CAL FIRE MISSION" REGARDLESS OF REQUEST NUMBER. CHAIN SAW SUPPLIES (OIL, CHAPS, ETC.) FOR GOLF STRIKE TEAMS WILL GO THROUGH YREKA HEADQUARTERS SERVICE CENTER.

H W Y 3

Horn Lane

Facility Hours:
Breakfast: 0530 – 1000
Dinner: 1700 – 2200
Showers: 0500 – 1200 and 1400 – 2200

○ Transportation

Refer Refer

Lunch
Water
Gatorade

Fuel

Dumpster

Security

Handwashing Trailer

Gen. Gen.
○ ○ ○ ○

Day Sleeping

Crew Sleeping Area

Fire Engine,
Heavy
Equipment,
and Crew
Parking
Only

Dumpster

Kitchen

Laundry

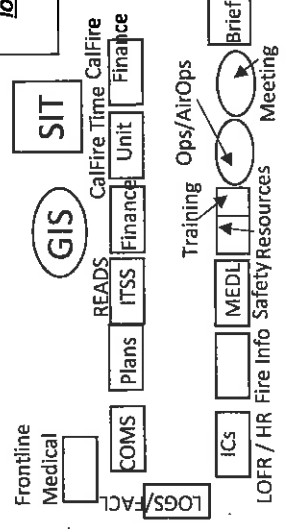
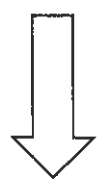
Showers

Overhead
Sleeping
Area

*Unified Check-in/Demob
located in command
trailer.*

Overhead Parking

Mechanic/
Equipment Inspection/
Demob Inspection



GIS

SIT

CalFire Time CalFire

Briefing Area

Handwashing Trailer

Supply

Ground Support

Dumpster

Ordering



*Not to Scale

Medical Incident Report

FOR ALL MEDICAL EMERGENCIES: IDENTIFY ON SCENE INCIDENT COMMANDER BY NAME AND POSITION AND ANNOUNCE "MEDICAL EMERGENCY" TO INITIATE RESPONSE FROM IMT COMMUNICATIONS/DISPATCH.

Use items one through nine to communicate situation to communications/dispatch.

1. CONTACT COMMUNICATIONS/DISPATCH

Ex: "Communications, Div. Alpha. Stand-by for Priority Medical Incident Report." (If life threatening request designated frequency be cleared for emergency traffic.)

2. INCIDENT STATUS: Provide incident summary and command structure.

Nature of Injury/Illness		<i>Describe the injury (Ex: Broken leg with bleeding)</i>
Incident Name		<i>Geographic Name + "Medical" (Ex: Trout Meadow Medical)</i>
Incident Commander		Name of IC
Patient Care		<i>Name of Care Provider (Ex: EMT Smith)</i>

3. INITIAL PATIENT ASSESSMENT: Complete this section for each patient. This is only a brief, initial assessment. Provide additional patient info after completing this 9 Line Report.

Number of Patients:	Male / Female	Age:	Weight:
Conscious? <input type="checkbox"/> YES <input type="checkbox"/> NO = MEDEVAC			
Breathing? <input type="checkbox"/> YES <input type="checkbox"/> NO = MEDEVAC			
Mechanism of Injury: <i>What caused the injury?</i>			
Lat/Long (Datum WGS84) <i>Ex: N 40° 42.45' x W 123° 03.24'</i>			

4. SEVERITY OF EMERGENCY, TRANSPORT PRIORITY

SEVERITY	TRANSPORT PRIORITY
<input type="checkbox"/> URGENT-RED Life threatening injury or illness. <i>Ex: Unconscious, difficulty breathing, bleeding severely, 2° – 3° burns more than 4 palm sizes, heat stroke, disoriented.</i>	Ambulance or MEDEVAC helicopter. Evacuation need is IMMEDIATE.
<input type="checkbox"/> PRIORITY-YELLOW Serious Injury or illness. <i>Ex: Significant trauma, not able to walk, 2° – 3° burns not more than 1-2 palm sizes.</i>	Ambulance or consider air transport if at remote location. Evacuation may be DELAYED.
<input type="checkbox"/> ROUTINE-GREEN Not a life threatening injury or illness. <i>Ex: Sprains, strains, minor heat-related illness.</i>	Non-Emergency. Evacuation considered Routine of Convenience.

5. TRANSPORT PLAN:

Air Transport: (Agency Aircraft Preferred)

- | | | | |
|-----------------------------------|---|--------------------------------------|--------------------------------|
| <input type="checkbox"/> Helispot | <input type="checkbox"/> Short-haul/Hoist | <input type="checkbox"/> Life Flight | <input type="checkbox"/> Other |
|-----------------------------------|---|--------------------------------------|--------------------------------|

Ground Transport:

- | | | | |
|---------------------------------------|------------------------------------|------------------------------------|--------------------------------|
| <input type="checkbox"/> Self-Extract | <input type="checkbox"/> Carry-Out | <input type="checkbox"/> Ambulance | <input type="checkbox"/> Other |
|---------------------------------------|------------------------------------|------------------------------------|--------------------------------|

6. ADDITIONAL RESOURCE/EQUIPMENT NEEDS:

- | | | |
|--|--------------------------------------|--|
| <input type="checkbox"/> Paramedic/EMT(s) | <input type="checkbox"/> Crew(s) | <input type="checkbox"/> SKED/Backboard/C-Collar |
| <input type="checkbox"/> Burn Sheet(s) | <input type="checkbox"/> Oxygen | <input type="checkbox"/> Trauma Bag |
| <input type="checkbox"/> Medication(s) | <input type="checkbox"/> IV/Fluid(s) | <input type="checkbox"/> Cardiac Monitor/AED |
| <input type="checkbox"/> Other (i.e. splints, rope rescue, wheeled litter) | | |

7. COMMUNICATIONS:

Function	Channel Name/Number	Receive (Rx)	Tone/NAC *	Transmit (Tx)	Tone/NAC *
<i>Ex: Command</i>	<i>Forest Rpt, Ch. 2</i>	<i>168.3250</i>	<i>110.9</i>	<i>171.4325</i>	<i>110.9</i>
COMMAND					
AIR-TO-GRND					
TACTICAL					

*(NAC for digital radio system)

8. EVACUATION LOCATION:

Lat/Long (Datum WGS84) <i>EX: N 40 42.45' x W 123 03.24'</i>	
Patient's ETA to Evacuation Location:	
Helispot/Extraction Size and Hazards:	

9. CONTINGENCY:

Considerations: If primary options fail, what actions can be implemented in conjunction with primary evacuation method? Be thinking ahead...

REMEMBER:

**Confirm ETA's of resources ordered
Act according to your level of training
Be Alert. Keep Calm. Think Clearly. Act Decisively.**