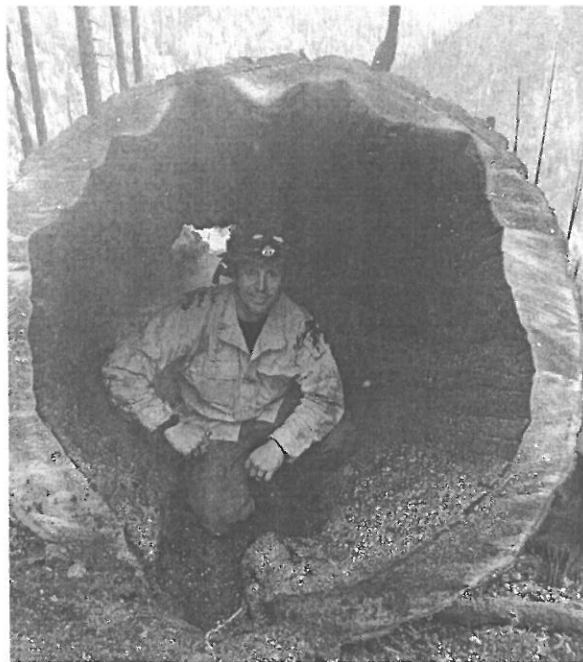


# SALMON AUGUST COMPLEX

## INCIDENT ACTION PLAN



TUESDAY SEPTEMBER 26<sup>TH</sup>, 2017

0700-2000



TEAM 7

CA-KNF-006081  
P5K9N2/0505

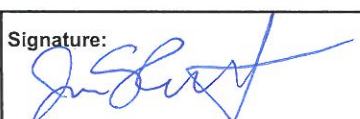
WGS 84  
dd° m.mm'



## INCIDENT OBJECTIVES (ICS 202)

<b>1. Incident Name:</b>		<b>2. Operational Period: DAY</b>	
SALMON AUGUST COMPLEX		Date/Time From: 09/26/2017 0700 TUE	Date/Time To: 09/26/2017 2000 TUE
<b>3. Objective(s):</b>			
<b>LEADERS INTENT:</b>			
The highest priority is to minimize risk to firefighters and the public by continually using the risk management process. It is expected that every person assigned in a leadership role does a risk assessment and provides appropriate mitigation measures prior to engaging in any activity.			
<b>INCIDENT OBJECTIVES:</b>			
<ul style="list-style-type: none"> <li>• Firefighter and public safety take precedence over all other incident objectives.</li> <li>• Adopt decisions and actions that thoughtfully consider firefighter exposure especially with respect to communications, driving, aviation, and mop-up.</li> <li>• Coordinate closely with local cooperators to protect private property, resources and infrastructure within and adjacent to the planning area.</li> <li>• Maintain and strengthen relationships with partner agencies, organizations, tribes, and the community.</li> <li>• Minimize suppression related impacts to wilderness characteristics through use of natural barriers, trails, and existing fire scars.</li> <li>• Implement suppression repair actions to the standards identified in the Salmon August Repair Plan (September 18, 2017).</li> </ul>			
<b>4. Operational Period Command Emphasis:</b>			
Deep Fire is operational priority number 1, continued suppression repair on the Wallow Fire is priority number 2.			
<b>General Situational Awareness:</b>			
<b>5. Site Safety Plan Required?</b> Yes <input type="checkbox"/> No <input checked="" type="checkbox"/>			
<b>Approved Site Safety Plan(s) Located at:</b>			
<b>6. Incident Action Plan</b> (the items checked below are included in this Incident Action Plan):			
<input checked="" type="checkbox"/> ICS 202	<input type="checkbox"/> ICS 207	Other Attachments: _____ _____ _____ _____	
<input checked="" type="checkbox"/> ICS 203	<input type="checkbox"/> ICS 208		
<input checked="" type="checkbox"/> ICS 204	<input checked="" type="checkbox"/> ICS 220		
<input checked="" type="checkbox"/> ICS 205	<input type="checkbox"/> Map/Chart		
<input type="checkbox"/> ICS 205A	<input checked="" type="checkbox"/> Weather Forecast/Tides/Currents		
<input checked="" type="checkbox"/> ICS 206			
<b>7. Prepared by:</b> JIM SHULTZ		<b>Position/Title:</b> PSC2	<b>Signature:</b> 
<b>8. Approved by Incident Commander:</b>		<b>Name:</b> RON BOLLIER	<b>Signature:</b> 
ICS 202	IAP Page	<b>Date/Time:</b> 09/25/2017 2100	

## ORGANIZATION ASSIGNMENT LIST (ICS 203)

<b>1. Incident Name:</b>		<b>2. Operational Period:</b> DAY	
SALMON AUGUST COMPLEX		Date/Time From: 09/26/2017 0700	Date/Time To: 09/26/2017 2000
		TUE	TUE
<b>3. Incident Commander(s) and Command Staff:</b>			
IC/UC	RON BOLLIER THOMAS LEDBETTER (T)	FACILITIES UNIT	ELIZABETH WADE
SAFETY OFFICER	JOE NISHIKIDA; JUSTIN BROLLIER TODD MACK (T)	COMMUNICATIONS UNIT	GREG ELY
INFORMATION OFFICER	RONDA BISHOP; MARY CERNICEK; VIOLA TAYLOR MARSHALL THOMPSON (T); TERRELL MCCALISTER (T)	FOOD UNIT	RICH MCCRACKEN
LIAISON OFFICER	FRED WETZEL SCOTT WATSON; JEFF LIBERMAN (T)	GROUND SUPPORT UNIT	TERRY HEATH
MEDICAL UNIT	JORDAN WILLIAMS	ORDERING	JERRI LYNN MORRILL
		BASE CAMP MANAGER	MIKE ZENAN
<b>4. Agency/Organization Representative(s):</b>			
<b>Agency/Organization</b>	<b>Name</b>		
FOREST SUPERVISOR	PATTY GRANTHAM	DIVISION/GROUP	DEEP FIRE
DISTRICT RANGER	TED MCARTHUR	DIVISION/GROUP	WALLOW A/D/H
DEPUTY DISTRICT RANGER	RUTH D'AMICO		CRAIG CUNNINGHAM TRACY STULL (T)
FFMO	CHRIS HAYES	DIVISION/GROUP	WALLOW K/M
DFMO	MIKE APPLING	DIVISION/GROUP	WALLOW P/S/T/V/Y
DISTRICT FMO- SCOTT DIVISION	HOWIE HOWERTON	DIVISION/GROUP	WEST REPAIR
CAL-OES	JOHN SALVATE		TOM CREWS
SHASTA TRIBAL LIASION	ANDREW VARNELL	<b>7. Operations Section:</b>	
CAL FIRE AREP	LUKE KENDALL	PLANNING OPS	SAM HICKS SPENCER GREGORY (T); DARRIN CURRY (T)
		FIELD OPS	QUINCY CHUNG
<b>5. Planning Section:</b>			
CHIEF	JIM SHULTZ		
RESOURCES UNIT	MELISSA FRIEND SHAWN BRANDOW (T); JAY SHAFFER (T)		
SITUATION UNIT	MATT GINDER (T)		
FBAN	KEN LODA		
GIS SPECIALIST	STEVE KOVACH; JOHN LANGE; KERRY GAIZ (T)		
INCIDENT METEOROLOGIST	MARY WISTER		
TRAINING SPECIALIST			
DOCUMENTATION	LINDA HELM (T)		
RESOURCE ADVISOR	SAM COMMARTO		
TECHNOLOGY SUPPORT SPECIALIST	HERACLIO JAQUEZ		
<b>6. Logistics Section:</b>			
CHIEF	MIKE WHALEN		
SUPPLY UNIT	STEVE FLETCHER		
<b>7b. Air Operations Branch:</b>			
		AIR OPS BRANCH DIRECTOR	DAVID GOMEZ
<b>8. Finance/Administration Section:</b>			
		CHIEF	SUSAN BROWN ERIC THAI (T)
		TIME UNIT	THELESA MONTOYA-NEVES (T)
		PERSONNEL TIME	KEN WRIGHT (T); ANITA DELONG (T)
		COST UNIT	FRAN WILSON
		COMPENSATION UNIT	ROBYN S FITZGERALD
		EQUIPMENT TIME	DARBY CIKAITOGA (T)
<b>9. Prepared By:</b>			
Name:	JIM SHULTZ	Position/Title:	PSC2
Signature:			
ICS 203	IAP Page	Date/Time:	09/25/2017 2100



## Division/Group Assignment List (ICS 204 WF)

<b>1. Incident Name:</b>			<b>3.</b>			
SALMON AUGUST COMPLEX			<b>Branch:</b>		<b>Division/Group:</b>  <b>DEEP FIRE</b>	
<b>2. Operational Period: DAY</b>						
Date/Time From: 09/26/2017 0700 TUE		Date/Time To: 09/26/2017 2000 TUE				
<b>4. Operations Personnel</b>						
<b>PLANNING OPS</b>		SAM HICKS SPENCER GREGORY (T)		<b>FIELD OPS</b>		QUINCY CHUNG
<b>5. Resources Assigned this Period</b>						
Strike Team / Task Force / Resource Designator		LWD	Leader	Number Persons	Drop Off PT./Time	Pick Up PT./Time
HC1 TRUCKEE IHC C-155		09/27	BOBBY F HUBBY	18	ICP/0700	ICP/2000
ENG6 SLD 2632 E-313		09/27	DEREK MORTENSEN	3	ICP/0700	ICP/2000
FEMT O-554		09/30	GEOFFREY M TRAPANI	1	ICP/0700	ICP/2000
<b>6. Control Operations/Work Assignments:</b>						
<p><b>Task/Purpose:</b> Monitor fire perimeter, mop up any areas of concern to the extent necessary to keep fire within the established containment lines. Engine 2632 report directly to Field Operations.</p> <p><b>Endstate:</b> Fire is 100% contained.</p>						
<b>7. Special Instructions:</b>						
<p>Maintain flexibility to support IA needs within the TFR upon request from operations. Closure order was lifted 9/21/17. Hunting season is open, expect to see the public. Any CalFire initial attack within the TFR, use frequency: CalFire AG1 RX:151.2200 Tone:192.8/TX:151.2200 Tone:192.8. Remove all flagging, trash and signs. Be cognizant of archeological, heritage and cultural sites. If found, leave undisturbed, flag / GPS and notify the DIVS and READ.</p>						
<b>8. Division/Group Communication Summary</b>						
Function	Channel	RX Frequency N/W	RX Tone/NAC	TX Frequency N/W	TX Tone/NAC	Mode
TACTICAL	7	166.7250	162.2	166.7250	162.2	A
COMMAND	1	170.4125	162.2	165.9625	162.2	A
COMMAND	2	168.0750	162.2	170.4250	162.2	A
COMMAND	3	170.3125	162.2	164.6250	162.2	A
COMMAND	4	164.7750	162.2	172.6500	162.2	A
<b>9. Prepared By (Resource Unit Leader)</b>			<b>Approved By (Planning Section Chief)</b>		<b>Date</b>	<b>Time</b>
FRIEND/BRANDOW(T) SHAFFER(T)			JIM SHULTZ		09/25/2017	2100



## Division/Group Assignment List (ICS 204 WF)

<b>1. Incident Name:</b>			<b>3.</b>			
SALMON AUGUST COMPLEX			<b>Branch:</b>		<b>Division/Group:</b>  <b>WALLOW DIV A/D/H</b>	
<b>2. Operational Period: DAY</b>						
Date/Time From: 09/26/2017 0700 TUE		Date/Time To: 09/26/2017 2000 TUE				
<b>4. Operations Personnel</b>						
<b>PLANNING OPS</b>		SAM HICKS SPENCER GREGORY (T)		<b>DIVISION/GROUP SUPERVISOR</b>		CRAIG CUNNINGHAM TRACY STULL (T)
<b>FIELD OPS</b>		QUINCY CHUNG				
<b>5. Resources Assigned this Period</b>						
Strike Team / Task Force / Resource Designator		LWD	Leader	Number Persons	Drop Off PT./Time	Pick Up PT./Time
WFM MARBLE MOUNTAIN O-715		10/05	JEREMY ROSE	10	ALPHA SPIKE/0700	ALPHA SPIKE/2000
HECM A-189.55		10/01	GABE MEDINA	1	ALPHA SPIKE/0700	ALPHA SPIKE/2000
FEMT A-189.56		10/01	LORA TROUT	1	ALPHA SPIKE/0700	ALPHA SPIKE/2000
<b>6. Control Operations/Work Assignments:</b>						
<b>Task/Purpose:</b> Monitor fire perimeter, mop up any areas of concern to the extent necessary to keep fire within the established containment lines.						
<b>Endstate:</b> Fire spread is held in check from spread to the north and east from impacting the communities and SRA lands.						
<b>7. Special Instructions:</b>						
Marble Mountain to continue to spike at Alpha Spike. Maintain flexibility to support IA needs within the TFR upon request from operations. Closure order was lifted 9/21/17. Hunting season is open, expect to see the public. Any CalFire initial attack within the TFR, use frequency: CalFire AG1 RX:151.2200 Tone:192.8/TX:151.2200 Tone:192.8. Remove all flagging, trash and signs. Be cognizant of archeological, heritage and cultural sites. If found, leave undisturbed, flag / GPS and notify the DIVS and READ.						
<b>8. Division/Group Communication Summary</b>						
Function	Channel	RX Frequency N/W	RX Tone/NAC	TX Frequency N/W	TX Tone/NAC	Mode
TACTICAL	12	168.2375	162.2	168.2375	162.2	A
COMMAND	1	170.4125	162.2	165.9625	162.2	A
COMMAND	2	168.0750	162.2	170.4250	162.2	A
COMMAND	3	170.3125	162.2	164.6250	162.2	A
COMMAND	4	164.7750	162.2	172.6500	162.2	A
<b>9. Prepared By (Resource Unit Leader)</b>			<b>Approved By (Planning Section Chief)</b>		<b>Date</b>	<b>Time</b>
FRIEND/BRANDOW(T) SHAFFER (T)			JIM SHULTZ		09/25/2017	2100

## Division/Group Assignment List (ICS 204 WF)

<b>1. Incident Name:</b>			<b>3.</b>			
SALMON AUGUST COMPLEX			<b>Branch:</b>		<b>Division/Group:</b>  <b>WALLOW DIV K/M</b>	
<b>2. Operational Period: DAY</b>						
Date/Time From: 09/26/2017 0700 TUE		Date/Time To: 09/26/2017 2000 TUE				
<b>4. Operations Personnel</b>						
<b>PLANNING OPS</b>		SAM HICKS SPENCER GREGORY (T)		<b>DIVISION/GROUP SUPERVISOR</b>		HAL STEVENS
<b>FIELD OPS</b>		QUINCY CHUNG				
<b>5. Resources Assigned this Period</b>						
Strike Team / Task Force / Resource Designator		LWD	Leader	Number Persons	Drop Off PT./Time	Pick Up PT./Time
ENG3 NWS 1667 E-292		09/26	JOSHUA BERG	5	ICP/0700	ICP/2000
ENG3 CCD 3363 E-305		09/26	MATT CROSSWAIT	4	ICP/0700	ICP/2000
FEMP O-618		09/27	MARCO GARCIA	1	ICP/0700	ICP/2000
AMBU SALMON AMBULANCE 1 E-100			ADAM BURNS	2	ICP/0700	ICP/2000
<b>6. Control Operations/Work Assignments:</b>						
<b>Task/Purpose:</b> Monitor fire perimeter, mop up any areas of concern to the extent necessary to keep fire within the established containment lines.						
<b>End State:</b> Fire stays within containment lines..						
<b>7. Special Instructions:</b>						
Maintain flexibility to support IA needs within the TFR upon request from operations. Closure order was lifted 9/21/17. Hunting season is open, expect to see the public. Any CalFire initial attack within the TFR, use frequency: <b>CalFire AG1 RX:151.2200 Tone:192.8/TX:151.2200 Tone:192.8.</b> Remove all flagging, signs and trash. Be cognizant of archeological, heritage and cultural sites. If found, leave undisturbed, flag / GPS and notify the DIVS and READ.						
<b>8. Division/Group Communication Summary</b>						
Function	Channel	RX Frequency N/W	RX Tone/NAC	TX Frequency N/W	TX Tone/NAC	Mode
TACTICAL	9	168.2500	162.2	168.2500	162.2	A
COMMAND	1	170.4125	162.2	165.9625	162.2	A
COMMAND	2	168.0750	162.2	170.4250	162.2	A
COMMAND	3	170.3125	162.2	164.6250	162.2	A
COMMAND	4	164.7750	162.2	172.6500	162.2	A
<b>9. Prepared By (Resource Unit Leader)</b>			<b>Approved By (Planning Section Chief)</b>		<b>Date</b>	<b>Time</b>
FRIEND/BRANDOW(T) SHAFFER (T)			JIM SHULTZ		09/25/2017	2100

## Division/Group Assignment List (ICS 204 WF)

<b>1. Incident Name:</b>			<b>3.</b>			
SALMON AUGUST COMPLEX			<b>Branch:</b>		<b>Division/Group:</b>  <b>WALLOW DIV P/S/T/V/Y</b>	
<b>2. Operational Period:</b> <b>DAY</b>						
Date/Time From: 09/26/2017 0700                      TUE	Date/Time To: 09/26/2017 2000                      TUE					
<b>4. Operations Personnel</b>						
<b>PLANNING OPS</b>		SAM HICKS SPENCER GREGORY (T)		<b>DIVISION/GROUP SUPERVISOR</b>		DANIEL CEDENO
<b>FIELD OPS</b>		QUINCY CHUNG				
<b>5. Resources Assigned this Period</b>						
Strike Team / Task Force / Resource Designator		LWD	Leader	Number Persons	Drop Off PT./Time	Pick Up PT./Time
HC1 SALMON RIVER IHC C-156		09/28	WILLIAM ROBINSON	19	ICP/0700	ICP/2000
HC2 WFM - GRASS LAKE O-82		10/06	WILLIAM C JOHNSON	10	ICP/0700	ICP/2000
ENG3 VLD 8302 E-317		09/28	BRADLEY E BRYANT	4	ICP/0700	ICP/2000
ENG3 PLATTE CANYON 23 E-332		09/30	MIKE REESE	3	ICP/0700	ICP/2000
STEN O-640		09/28	JOEL BRANDT	1	ICP/0700	ICP/2000
SOFR O-696		10/02	ROBERT BUCHO	1	ICP/0700	ICP/2000
SOFR O-671		10/01	LEANARD GARCIA	1	ICP/0700	ICP/2000
EMTF O-509		09/30	JOHN NELSON BARKER	1	ICP/0700	ICP/2000
FEMT O-555		09/30	RON DUANE SPELLMAN	1	ICP/0700	ICP/2000
AMBU E-309		09/27	MOUNTAIN MEDIC 2		ICP/0700	ICP/2000
DIVS O-598.10		09/27	IAN QUIST	1	ICP/0700	ICP/2000
DIVS O-598.47		09/28	ERIC DUNING	1	ICP/0700	ICP/2000
<b>6. Control Operations/Work Assignments:</b>						
<u>Task/Purpose:</u> Monitor fire perimeter, mop up any areas of concern to the extent necessary to keep fire within the established containment lines.						
<u>End State:</u> Fire stays within containment lines.						
<b>7. Special Instructions:</b>						
Maintain flexibility to support IA needs within the TFR upon request from operations. Closure order was lifted 9/21/17. Hunting season is open, expect to see the public. Any CalFire initial attack within the TFR, use frequency: CalFire AG1 RX:151.2200 Tone:192.8/TX:151.2200 Tone:192.8. Remove all flagging, trash and signs. Be cognizant of archeological, heritage and cultural sites. If found, leave undisturbed, flag / GPS and notify the DIVS and READ.						
<b>8. Division/Group Communication Summary</b>						
Function	Channel	RX Frequency N/W	RX Tone/NAC	TX Frequency N/W	TX Tone/NAC	Mode
TACTICAL	8	166.7750	162.2	166.7750	162.2	A
COMMAND	1	170.4125	162.2	165.9625	162.2	A
COMMAND	2	168.0750	162.2	170.4250	162.2	A
COMMAND	3	170.3125	162.2	164.6250	162.2	A
COMMAND	4	164.7750	162.2	172.6500	162.2	A
<b>9. Prepared By (Resource Unit Leader)</b>			<b>Approved By (Planning Section Chief)</b>		<b>Date</b>	<b>Time</b>
FRIEND/BRANDOW(T) SHAFFER (T)			JIM SHULTZ		09/25/2017	2100



## Division/Group Assignment List (ICS 204 WF)

<b>1. Incident Name:</b>			<b>3.</b>			
SALMON AUGUST COMPLEX			<b>Branch:</b>		<b>Division/Group:</b>  <b>WEST REPAIR GROUP</b>	
<b>2. Operational Period:</b> <b>DAY</b>						
Date/Time From: 09/26/2017 0700                      TUE		Date/Time To: 09/26/2017 2000                      TUE				
<b>4. Operations Personnel</b>						
<b>PLANNING OPS</b>		SAM HICKS SPENCER GREGORY (T)		<b>DIVISION/GROUP SUPERVISOR</b>		TOM CREWS
<b>FIELD OPS</b>		QUINCY CHUNG				
<b>5. Resources Assigned this Period</b>						
Strike Team / Task Force / Resource Designator		LWD	Leader	Number Persons	Drop Off PT./Time	Pick Up PT./Time
ENG3 TAHOE 342 E-291		09/26	ZACHORY HUFF	5	ICP/0700	ICP/2000
DOZ2 JOHNSON E-179		10/01	BOB JOHNSON	2	ICP/0700	ICP/2000
DOZ2 PETERS E-338		10/04	BOLKCOM/WELDON	2	ICP/0700	ICP/2000
EXCA BRITTEN E-330		09/29	JOHN BRITTEN	2	ICP/0700	ICP/2000
EXCA JOHNSON E-222		10/04	CLINT JOHNSON	2	ICP/0700	ICP/2000
GRD JOHNSON E-140		10/05	LANE WILSON	2	ICP/0700	ICP/2000
HEQB (T) O-676		10/02	MICHAEL BITTNER	1	ICP/0700	ICP/2000
FOBS O-598.21		09/28	CAMERON TONGIER	1	ICP/0700	ICP/2000
FOBS (T) O-617		09/27	STEVE M SAVAGE	1	ICP/0700	ICP/2000
SOFR O-697		10/02	JEFF HUGHES	1	ICP/0700	ICP/2000
READ O-110		09/30	SAMUEL COMMARTO	1	ICP/0700	ICP/2000
READ (T) O-233		09/30	BRIANNA MURPHY- JOHNSTON	1	ICP/0700	ICP/2000
<b>8. Division/Group Communication Summary</b>						
Function	Channel	RX Frequency N/W	RX Tone/NAC	TX Frequency N/W	TX Tone/NAC	Mode
TACTICAL	6	168.6000	162.2	168.6000	162.2	A
COMMAND	1	170.4125	162.2	165.9625	162.2	A
COMMAND	2	168.0750	162.2	170.4250	162.2	A
COMMAND	3	170.3125	162.2	164.6250	162.2	A
COMMAND	4	164.7750	162.2	172.6500	162.2	A
<b>9. Prepared By (Resource Unit Leader)</b>			<b>Approved By (Planning Section Chief)</b>		<b>Date</b>	<b>Time</b>
FRIEND/BRANDOW(T) SHAFFER(T)			JIM SHULTZ		09/25/2017	2100

## Division/Group Assignment List (ICS 204 WF)

<b>1. Incident Name:</b>				<b>3.</b>			
SALMON AUGUST COMPLEX				<b>Branch:</b>		<b>Division/Group:</b>  <b>WEST REPAIR GROUP</b>	
<b>2. Operational Period: DAY</b>							
Date/Time From: 09/26/2017 0700 TUE		Date/Time To: 09/26/2017 2000 TUE					
<b>4. Operations Personnel</b>							
<b>PLANNING OPS</b>		SAM HICKS SPENCER GREGORY (T)		<b>DIVISION/GROUP SUPERVISOR</b>		TOM CREWS	
<b>FIELD OPS</b>		QUINCY CHUNG					
<b>6. Control Operations/Work Assignments:</b>							
<u>Task/Purpose:</u> Begin dozer line repair south of Whiskey Butte (dozer lines #6 and #7). Grader to continue repair down 4051 road to DP 70. Continue dozer line repair in Whiskey Butte area from DP 24 to DP 13.							
<u>Endstate:</u> All Phase 1 repair work completed and approved by READ.							
<b>7. Special Instructions:</b>							
Maintain flexibility to support IA needs within the TFR upon request from operations. Closure order was lifted 9/21/17. Hunting season is open, expect to see the public. Any CalFire initial attack within the TFR, use frequency: <b>CalFire AG1</b> RX:151.2200 Tone:192.8/TX:151.2200 Tone:192.8. Remove all flagging, trash and signs. Be cognizant of archeological, heritage and cultural sites. If found, leave undisturbed, flag / GPS and notify the DIVS and READ.							
<b>8. Division/Group Communication Summary</b>							
Function	Channel	RX Frequency N/W	RX Tone/NAC	TX Frequency N/W	TX Tone/NAC	Mode	
TACTICAL	6	168.6000	162.2	168.6000	162.2	A	
COMMAND	1	170.4125	162.2	165.9625	162.2	A	
COMMAND	2	168.0750	162.2	170.4250	162.2	A	
COMMAND	3	170.3125	162.2	164.6250	162.2	A	
COMMAND	4	164.7750	162.2	172.6500	162.2	A	
<b>9. Prepared By (Resource Unit Leader)</b>			<b>Approved By (Planning Section Chief)</b>			<b>Date</b>	<b>Time</b>
FRIEND/BRANDOW(T) SHAFFER(T)			JIM SHULTZ			09/25/2017	2100



### Fire Weather Forecast

**FORECAST NO:** 39

**NAME OF FIRE:** Salmon August Complex

**PREDICTION FOR:** 0700 Tue - 0700 Wed

**UNIT:** CA-KNF

**SHIFT DATE:** 9/26

**SIGNED:** *Mary Wister*

**TIME AND DATE**

**Incident Meteorologist-** Mary Wister  
240-778-5303

**FORECAST ISSUED:** 1900 9/25/17

**WEATHER DISCUSSION:** High pressure will remain the dominant weather pattern through Thursday. Each day will be a little warmer and a little drier. No major wind concerns are anticipated. Temperatures will be in the upper 80s and humidity values will be in the teens during the afternoon at elevations below 3000 feet.

**WEATHER FORECAST FOR TUESDAY:**

**WEATHER:** Mostly Sunny.

**TEMPERATURES:** Max Lower Elevations....82-88; ridges...62-68. **24 HR Trend** Up 3

**HUMIDITY:** Min Lower Elevation....18-25%; ridges....27-32%. **24 HR Trend** Down 3%

**20-FOOT WIND:**

**SLOPE/VALLEY -** Upslope/Upcanyon 3-7 mph.

**RIDGETOP-** Northeast 5-10 mph gusting to 15 mph along north facing slopes.

**STABILITY/INVERSION:** Strong mid-level inversion through the day. **TRANSPORT WINDS:** North 20 mph

**WEATHER FORECAST FOR TUESDAY NIGHT:**

**WEATHER:** Mostly Clear.

**TEMPERATURES:** Min Lower slopes/valleys 42-47F; Ridges...40-50F **24 HR Trend:** Little change  
38 at ICP valleys. Up 2 ridges.

**HUMIDITY:** Max Lower slopes....73-78%; Ridges...37-50%. **24 HR Trend:** Down 5%

**20-FOOT WIND:**

**SLOPE/VALLEY -** Downslope/Down canyon 2-6 mph.

**RIDGETOP -** Northeast-East 4-7 mph.

**EXTENDED FORECAST:**

**WEDNESDAY...** Mostly Clear. Highs 65-73 ridges...85-90 valleys. Min RH 15-27%. Lows in the 40s to lower 50s. Max RH 35-45% ridges and 70-75% valleys. East-Southeast wind 3-7 mph.

**REALTIME RAWS INFO for**  
**SALMON AUGUST COMPLEX**

IRAWS 58 – Div P

Quartz Hill –Deep Fire

KNF 98 – ICP

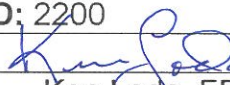
**WEATHER SAFETY MESSAGE:**

**Temperatures climbing to above seasonal normals, and humidity values 18-25% will dry out fuels.**





## FIRE BEHAVIOR FORECAST

<b>FORECAST NUMBER</b> 38	<b>TYPE OF INCIDENT:</b> Wildland Fire
<b>INCIDENT NAME:</b> Salmon August Complex	<b>OPERATIONAL PERIOD</b> Day shift 9/26/17
<b>DATE ISSUED:</b> 25 September 2017	<b>TIME ISSUED:</b> 2200
<b>UNIT:</b> Klamath National Forest	<b>SIGNED</b>  Ken Loda, FBAN

### INPUTS

**WEATHER SUMMARY** See the weather forecast preceding.

### FUELS CONDITIONS

We have primarily two types of fuel beds. The first consists of dead and down timber, some standing dead, along with approximately 10-year old conifers, brush, and grass reproduction after previous fires. The second is areas of moderate to heavy stringers and stands of mixed conifer, snowbrush, whitethorn and manzanita, with varying levels of dead and down material. Brush live moisture is at 100%, conifers 150%. Fine dead fuel moisture will be about 9% at 0700, and could get to 4% by mid-afternoon; 1000-hr fuels are at 14-16%.

### OUTPUTS

#### GENERAL FIRE BEHAVIOR

↑ ▲ ↑ ▲ Burning conditions are still low, but steadily rising ▲ ↑ ▲ ↑

☺ ☺ ☺ It's another beautiful day in the neighborhood for repair and mop-up ☺ ☺ ☺

Moderate RH recovery still inhibited overnight burning coming into today. The fire's main behavior factors are heavy dead and down fuels that are getting drier, with steep topography.

The forecast weather will support continued burnout of heavy fuels, and could support low intensity creeping fire behavior.

Spotting: The terrain supports rollout in many areas, but burning material is rare. Also, spotting success will be moderate, at best, as the probability of ignition will be 30% at the start of shift and will go to 70% during peak burning conditions.

#### SPECIFIC FIRE BEHAVIOR

Interior burnout of heavier fuels will continue. Our IR flights indicate that some have extinguished in the past few days. Others we have yet to see smoke from, at least at the times we've been looking. In those few areas where fire persists, during the peak burning period (1300 to 1800) we might see 2 to 3 ch/hr spread and 1' flame lengths.

### SAFETY

**SAFETY** Continue to watch for rollout, snags, and falling fire-loosened rocks.

**AIR OPERATIONS** No expectation of complications from weather or fire behavior.

# AIR OPERATIONS SUMMARY

Prepared by: David A. Gomez

Prepared Date: 09/25/2017

Prepared Time: 1830

<b>1. INCIDENT:</b> Salmon August Complex	<b>2. OPS PERIOD DATE:</b> 09/26/2017	<b>START TIME:</b> 0700	<b>END TIME:</b> 2000	<b>SUNRISE:</b> 0653	<b>SUNSET:</b> 1851
<p><b>3. REMARKS:</b> Practice SEE AND AVOID tactic to promote airspace de-confliction and hazard avoidance. Perform high level recon before descending low level.</p> <p>Pilots advise traffic on Scott Valley Unicom – 122.8 – upon takeoff and landing.</p> <p><b>HAZARDS:</b> Power Lines, smoke, gusty/erratic winds from t-storms, and UAS. (REPORT UAS SIGHTINGS TO HELIBASE, INCIDENT AIRCRAFT, and/or AIR ATTACK.)</p> <p>CalFire IA A/G Frequency- CDF A/G 1- RX/TX 151.2200 RX/TX tone 192.8</p> <p>Managers can email costs to: scottvalleyhelibase2017@gmail.com</p>					
		<b>4. READY ALERT AIRCRAFT</b>		<b>5. TFR NOTAM:</b> 7/0753 Altitude: surface to 11000', MSL Polygon: See NOTAM TFR Frequency: 118.175	
		<u>Extraction/Med Transport A/C:</u> 35HX – Short Haul & Litter Capable – Scott Valley Hbase  H-407 – 24hr Hoist capable – Benton Field, Redding, CA  <u>Initial Attack A/C:</u> All A/C			

6. PERSONNEL	NAME	PHONE	7. FREQUENCIES	AM	FM	8. FIXED-WING- Type/ Make-Model/ N#/ Base
AOBD	David Gomez	307-413-4209	A/A TFR (A-10)	118.175		None assigned.
HEB1	David Zuares	208-867-4857	A/A RW (A-11)	127.125		AIR ATTACK – order thru Yreka Dispatch Center (YICC)
HEB1(T)	Curtis Ritzman	970-237-1154				LEAD PLANE/ AIR TANKERS - Order as Needed thru ATGS
Scott Valley Helibase	530-468-5494 or 530-468-1294 Fax 530-468-2118		Air Tactics (A-37)		172.1125	AVIATION SUPPORT EQUIPMENT – at Helibase Crash Rescue- Fort Jones Engine - 1314 (E-185), Etna Water Tender (E-339), Porta Johns – 10 (E-153) & 4 hand wash (E-156)
			A/G Cmd (A-18)		166.6750	
			A/G Tactical (A-9)		169.0875	
			Deck		163.1000	


## 9. HELICOPTER

T	Y	MAKE/ MODEL	BASE	AVAIL	START	REMARKS	HMGB
161KA	1	Kamax	Hbase	0900	0800	Bucket/LL	T. Williams (530) 592-8859
H-528	2	Bell 212 HP	Hbase	0900	0800	Bucket/LL	Alex Ihle (805) 909-0577
H-502	2	Bell 205A-1++	Hbase	0900	0800	Bucket/LL	Joel Torres (530) 340-1533
35HX	3	AS350B3	Hbase	0900	0800	Bucket/LL	Jim Dotson (307) 259-3397

## KNOWN MISSIONS:

1. Logistical  
- 1700 backhaul from Alpha Spike
2. Recon as requested
- 3.
- 4.

# INCIDENT RADIO COMMUNICATIONS PLAN (ICS 205)

<b>1. Incident Name:</b>		<b>2. Date/Time Prepared:</b>			<b>3. Operational Period:</b>		<b>DAY</b>			
SALMON AUGUST COMPLEX		Date: 09/25/2017 Time: 2100			Date/Time From: 09/26/2017 0700 Date/Time To: 09/26/2017 2000		TUE TUE			
<b>4. Basic Radio Channel Use:</b>										
Zone Group	Ch #	Function	Channel Name/Trunked Radio System Talkgroup	Assignment	RX Freq	RX Tone/NAC	TX Freq	TX Tone/NAC	Mode (A,D, or M)	Remarks
	1	COMMAND	NIFC C10	ALL DIVISIONS	170.4125	162.2	165.9625	162.2	A	TONE 15 ON ENGLISH PEAK
	2	COMMAND	NIFC C3	ALL DIVISIONS	168.0750	162.2	170.4250	162.2	A	TONE 15 ON BOULDER PEAK
	3	COMMAND	NIFC C66	ALL DIVISIONS	170.3125	162.2	164.6250	162.2	A	TONE 15 ON WHISKY BUTTE
	4	COMMAND	NIFC C85	ALL DIVISIONS	164.7750	162.2	172.6500	162.2	A	TONE 15 ON BLUE RIDGE
	5	DISPATCH	SALMON	BACK UP NET	172.4000	0.0	164.1250	156.7	A	Eddy's Gulch
	6	TACTICAL	NIFC T3	REPAIR GROUP	168.6000	162.2	168.6000	162.2	A	
	7	TACTICAL	NIFC T5	DIV AA	166.7250	162.2	166.7250	162.2	A	
	8	TACTICAL	NIFC T6	DIV P/S/T/V/Y	166.7750	162.2	166.7750	162.2	A	
	9	TACTICAL	NIFC T7	DIV K/M	168.2500	162.2	168.2500	162.2	A	
	10	TACTICAL	R5 T4	UNASSIGNED	166.5500	162.2	166.5500	162.2	A	
	11	TACTICAL	R5 T5	UNASSIGNED	167.1125	162.2	167.1125	162.2	A	
	12	TACTICAL	R5 T6	DIV A/D/H	168.2375	162.2	168.2375	162.2	A	
	13	AIR TO GROUND	AIR CMD	ALL DIVISIONS	166.6750	0.0	166.6750	0.0	A	
	14	AIR TO GROUND	AIR TAC	ALL DIVISIONS	169.0875	0.0	169.0875	0.0	A	
	15	AIR TO GROUND	CALCORD	ALL DIVISIONS	156.0750	156.7	156.0750	156.7	A	AIR MEDICAL
	16	EMERGENCY	GUARD	ALL DIVISIONS	168.6250	0.0	168.6250	110.9	A	AIR GUARD - EMERG. USE ONLY
<b>5. Special Instructions:</b>										
Cal Fire frequency A/G1 RX & TX 151.220 Tone 192.8 will be used by Cal Fire inside and out of the TFR on any new IA responses.										
<b>6. Prepared By</b>				Name: GREG ELY, COML				Signature: 		
(Communications Unit Leader)				IAP Page				Date/Time: 09/25/2017 2100		
ICS 205										



# HEALTH AND SAFETY MESSAGE

*SAFETY* starts with *YOU*

We are ALL accountable for SAFE behaviors

INCIDENT: Salmon August Complex

DATE: 09/26/17

Operational Period: Day

## Major Hazards and Risks:

Complacency

Snags/Live Trees

Driving

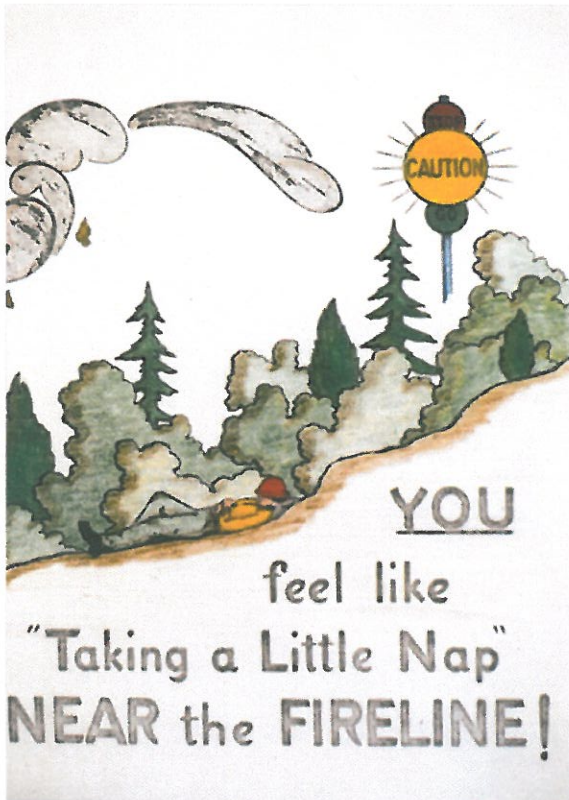
Fire Order of the Day – Recognize current weather conditions and obtain forecasts

### Narrative:

It's been a busy season for wildfire this year. Many crews have been running and gunning since the season began, and cumulative fatigue is building up. This sort of tiredness will not be cured by a simple night of sleep. Pace yourself and know your limitations. It is extremely easy to let small details go unnoticed. Normalization of deviance can take place when being constantly placed in harm's way...stay focused and aware throughout the day.

Snags are everywhere on this fire and if burnt trees are not around, then certainly live ones are. Keep your head on a swivel at all times when out on the fire line. Before you take a break make sure to scout your area. Make sure no unnecessary felling is taking place. Ask yourself if the mission is worth it or necessary for the end goal.

Driving is always one of the more dangerous activities we perform on fire assignments. On this wildfire we drive a great distance and animals and public are plentiful. The road conditions change daily with rolling debris and changing weather. Speed zones around the fire change rapidly. Drive defensively and give full attention to the road ahead. Obey the speed limits and expect the worst around the next corner.



## Look Up, Look Down, Look Around

- \***Fuel Characteristics** – Assess prior to beginning operations.
- \***Fuel Moisture** – Read daily shift plan and assess on site.
- \***Fuel Temperature** – Varies with exposure to direct sunlight.
- \***Terrain & Fuel Accumulations** – Scout prior to beginning operations and continuously during operations.
- \***Wind** – Measure, observe, feel and notice changes.
- \***Atmospheric Stability** – Observe.
- \***Fire Behavior** – Monitor constantly prior to and during operations.
- \***Safety** – Ask questions in unfamiliar situations. The only dumb question is the one you did not ask.

Incident Safety Officer: Justin Brollier SOF2, Joe Nishikida SOF2, Todd Mack SOF2 (t)

Salmon August Complex / CA-KNF-006081 - Tuesday, September 26, 2017

8. Location	9. Hazard	6. Control or Abatement Action (Engineering, Administrative, PPE, Avoidance, Education, etc)
All	Chain Saw Operations	<ul style="list-style-type: none"> <li>- Follow "Hazard Tree Safety" guidelines, IRPG page 22</li> <li>- Look up, Look down, Look around for hazard tree indicators.</li> <li>- Only fell and buck trees within your expertise, and training.</li> <li>- Follow "Procedural Felling Operations" on page 79 in IRPG.</li> <li>- Do not fall trees during high wind events.</li> <li>- Ensure proper use of all required PPE.</li> </ul>
All	Driving & Traffic	<ul style="list-style-type: none"> <li>- Practice "Defensive Driving" techniques traveling on all roads and city streets.</li> <li>- Use spotters when backing.</li> <li>- Honk horn to alert personnel when backing.</li> <li>- Keep clutter off dash and inside cab.</li> <li>- Follow Driving LCES (Lights, Chock blocks, Emergency brake, Seat belts).</li> <li>- Always use headlights.</li> <li>- Yield to pedestrians and bicycles.</li> <li>- Observe posted speed limits.</li> <li>- Use the 3 second rule for following distance when driving.</li> <li>- Use chock blocks, turn wheels into hill.</li> <li>- Avoid distractions (eating, cell phones, radio).</li> <li>- Ensure that windshields are kept clean of dust and bugs.</li> </ul>
All	Helicopter Operations	<ul style="list-style-type: none"> <li>- Stay clear of all bucket drops when suppression actions are in place and allow 1 minute prior to re-entry.</li> <li>- Monitor A-G communications.</li> <li>- Follow aviation safety guidelines in IRPG and IHOG.</li> </ul>
All	Fireline Hazards	<ul style="list-style-type: none"> <li>- Do not work directly above or below personnel during firing and mop-up operations.</li> <li>- Watch for falling and rolling debris on steep slopes.</li> <li>- Alert crew personnel of rolling debris by yelling to affected individuals.</li> <li>- Position debris that could roll vertically on slope.</li> <li>- Avoid stepping over debris that could roll by walking around object.</li> <li>- Avoid radiant heat by wearing appropriate PPE correctly.</li> <li>- Use correct tool for task assigned.</li> <li>- Follow power line safety protocol as outlined on page 22 in IRPG.</li> <li>- Flag and isolate all HAZMAT and alert all personnel working in Division.</li> <li>- Follow WUI recommendations on pages 10-11 in IRPG.</li> </ul>
All	Hazard Trees	<ul style="list-style-type: none"> <li>- Follow "Hazard Tree Safety" guidelines, IRPG page 22</li> <li>- Look up, Look down, Look around for hazard tree indicators.</li> <li>- Only fell and buck trees within your expertise, and training.</li> <li>- Follow "Procedural Felling Operations" on page 79 in IRPG.</li> <li>- Do not fall trees during high wind events.</li> <li>- Ensure proper use of all required PPE.</li> </ul>
All	Heat Related Illness (HRI)& Dehydration	<ul style="list-style-type: none"> <li>- Drink Fluids throughout operational period (6-8 qts/shift).</li> <li>- Maintain water/electrolyte ratio of 3 to 1.</li> <li>- Carry extra water on line and cache water at drop points.</li> <li>- Take Frequent breaks, minimum of 10 minutes every hour.</li> <li>- Allow out of area resources time to acclimatize before expecting peak performance.</li> <li>- Recognize symptoms of HEAT RELATED ILLNESS which include.                             <ul style="list-style-type: none"> <li>o Lack of energy</li> <li>o Headaches, dizziness</li> <li>o Lack of rest</li> <li>o No hunger, poor eating habits</li> <li>o Hot skin, and lack of sweating</li> </ul> </li> </ul>
All	Unburned Area/Reburn Potential	<ul style="list-style-type: none"> <li>- Monitor weather.</li> <li>- Base actions upon observed and predicted fire behavior.</li> <li>- LCES Checklist (IRPG pg. 6).</li> <li>- Look Up, Down and Around (IRPG pg. 2-3).</li> </ul>
All	Fatigue & Over Exertion	<ul style="list-style-type: none"> <li>- Drink 1 quart of water each hour during and after work.</li> <li>- Rotate crews out of smoky areas.</li> <li>- Set a reasonable work pace and allow adequate rest breaks while on the project.</li> <li>- Stagger work crews start time to limit fatigue.</li> <li>- Use buddy system to monitor personnel of heat related and fatigue issues.</li> <li>- Follow work / rest guidelines.</li> </ul>
All	Communications	<ul style="list-style-type: none"> <li>- Maintain communication with aviation resources, and suppression organization.</li> <li>- Ensure all know frequency and protocol for contacting resources.</li> <li>- Utilize the ICS 205.</li> <li>- Utilize human repeaters when working in dead spots.</li> </ul>
All	Spot Fires	<ul style="list-style-type: none"> <li>-Size up prior to engagement.</li> <li>- Watch for multiple spots.</li> <li>-Ensure LCES is in place.</li> <li>-Maintain Situational Awareness at all times.</li> </ul>
All	Steep Terrain & Rolling Debris	<ul style="list-style-type: none"> <li>- Maintain 8'-10' spacing when working &amp; walking.</li> <li>- Don't work above any personnel.</li> <li>- Be on the lookout for rolling rocks, debris, or burning material.</li> <li>- Evaluate necessity to send personnel in areas with limited access.</li> <li>- Post lookouts (IRPG pg 6).</li> </ul>
All	Heavy Equipment Operations	<ul style="list-style-type: none"> <li>- Ensure communications are established with operators.</li> <li>- Use hand signals if other communications are unavailable.</li> <li>- Maintain a 50'-100' exclusion area around equipment and increase it to 1 1/2 times tree height when in timber.</li> <li>- Use a spotter when backing.</li> <li>- Avoid working below heavy equipment.</li> </ul>
All	Mop-up & Repair	<ul style="list-style-type: none"> <li>- Do not work above or below personnel during rehab/mop-up operations.</li> <li>- Alert crew personnel of rolling debris by yelling to affected individuals.</li> <li>- Position debris that could roll vertically on slope.</li> <li>- Wear eye protection.</li> </ul>
All	Unplanned Public Interaction	<ul style="list-style-type: none"> <li>- Be alert to non-fire personnel in areas with suppression personnel.</li> <li>- All non-fire personnel will be escorted while on fireline.</li> <li>- Post lookouts to in areas with public to avoid conflicts with mission tasks.</li> <li>- Ensure sufficient security to restrict access to exclusion area.</li> </ul>
All	Wildlife & Livestock	<ul style="list-style-type: none"> <li>- Watch out for wildlife &amp; livestock inside fire area and along roadways.</li> <li>- Clean up all debris and trash during each operational period.</li> </ul>

# ATTENTION

The Kitchen will be closing

on

**Wednesday 09-27-17**

**at**

**0800**

to start the demob process.

Lunches will be available as usual.



<b>DATE:</b>					<b>MODE OF DELIVERY AND LOCATION</b>				
<b>Delivery Contact:</b>									
<b>TIME:</b>					<b>GROUND SUPPORT:</b>				
<b>DATE NEEDED BY:</b>					<b>HELIBASE:</b>				
Order Received in <b>COMM'S:</b>					<b>DROP POINT:</b>				
Order Received in <b>SUPPLY:</b>					<b>LAT/LONG(+ ELIVATION):</b>				
Order Received in <b>OTHER:</b>					<b>SPIKE:</b>				
Order Received in <b>HELIBASE:</b>					<b>TO BE PICKED UP BY@</b>				
Order Delivered/shipped to final location by:					NAME:		TIME:		
					NAME:		TIME:		
					NAME:		TIME:		
line #	QTY	NFES #	ITEM	shipped	line #	QTY	NFES #	ITEM	SHIPPED
1					34			Backpack pump	
2			Cubies of water EA.		35			Slingable Blivet	
3			Bottled Water (Case)		36			Folding Tank 1000/6000gal	
4			Gatoraide (Cases)		37			Pumpkin 1500/3000/6000/	
5			Batteries AAA (Box)		38				
6			Fuel Unleaded Gallons		39				
7			Fuel Diesel Gallons		40			Mark III pump kit	
8			FuelDrip Torch gallo		41			Lightweight pump kit	
9			Bar Oil Qt		42			Volume pump kit	
10			2 Cycle Oil oz/Qt/Gal		43			Hose :1 1/2" x 100 ft (feet)	
11			Plactic Sheeting Roll		44			Hose 1" x 100' (feet)	
12			P - Cord Ft/Spool		45			Hose 3/4" x 50' (feet)	
13					46			Reducer 1 1/2" -1" (each)	
14					47			Reducer 1"-3/4" (each)	
15			<b>MIS. LIST BELOW</b>		48			Gated Wyes 1 1/2 (each)	
16					49			Gated Wyes 1" (each)	
17					50			Gated wyes 3/4" (each)	
18					51				
19					52				
20					53			Nozzles, 1 1/2 " (each)	
21					54			Nozzles, 1" (each)	
22					55			Nozzles, 3/4 " (each)	
23					56				
24					57				
25					58				
26					59				
27					60				
28					61				
29					62			<b>MEALS</b>	
30					63		1842	MRE'S(# cases) 12/case	
31					64			Breakfast	
32					65			Lunch	
33					66			Dinner	

TENTATIVE RELEASE  
48 HOUR NOTICE NEEDED FOR AIR TRAVEL

**SEPTEMBER 26th**

**CREWS**

C-139 0700 (HC2I) DIAMOND FIRE  
C-137 0715 (HC1) UKONOM IHC

**EQUIPMENT**

E-78 0715 (ENG6) AZ-FRY 365  
E-235 0730 (MAST) STRIP  
E-299 0745 (ENG6) DSR 8262  
E-317 0800 (ENG3) VLD 8302  
E-36 1400 (FT1) FUEL TENDER - T1 - CROSS  
E-117 1400 (WTS2) WATER TENDER - SUPPORT - T2 -

**OVERHEAD**

O-712 0730 (FALM) MODULE - FALLER - NORTH ZONE  
O-586 0745 (HMGB) RITZMAN, CURTIS DWIGHT  
O-553 0745 (RSOP) MODULE XLF REMS 6  
O-397 0800 (EQPM) BAGLEY, MARK  
O-699 0800 (PIOF) TAYLOR, VIOLA  
O-233 0800 (READ) MURPHY-JOHNSTON, BRIANNA  
O-587 1200 (HECM) KEANAAINA, GLEN NAINOA  
O-588 1200 (HECM) NAKATA, ARNOLD

**SEPTEMBER 27th**

**EQUIPMENT**

E-292 0700 (ENG3) NWS E-1667  
E-291 0730 (ENG3) TAHOE 342  
E-305 0730 (ENG3) CCD 3363

**OVERHEAD**

O-437 0745 (EQPM) BRITT, BILLY FRANKLIN  
O-579 0745 (SCKN) ROBERTSON, MATTHEW JACK  
O-597 0745 (DIVS) UNDERWOOD, JIM  
O-678 0745 (PTRC) DELONG, ANITA K  
O-621 0800 (GISS) GAIZ, KERRY K  
O-617 0830 (FOBS) SAVAGE, STEVE M  
O-624 0900 (SCKN) PETERSON, JASON D  
O-719 0900 (FSC3) THAI, ERIC  
O-665 1500 (DOCL) HELM, LINDA  
O-650 1900 (SECM) BLISS, HEATHER M

**SEPTEMBER 27th**

**CREWS**

C-155 0700 (HC1) TRUCKEE IHCC-156

**EQUIPMENT**

E-309 0700 (AMBU) MOUNTAIN MEDIC 2

**OVERHEAD**

O-618 0730 (FEMP) GARCIA, MARCO  
O-596 0730 (DIVS) CEDENO, DANIEL  
O-643 0745 (BCMG) STOFFEL, THOMAS  
O-616 0800 (GISS) LANGE, JOHN  
O-677 1000 (ICT2) LEDBETTER, THOMAS







<b>MEDICAL PLAN</b>	1. INCIDENT NAME <b>Salmon August Complex</b>	2. DATE PREPARED 9/25/17	3. TIME PREPARED 1600	4. OPERATIONAL PERIOD 9/26/2017 0600-2200				
	5. INCIDENT MEDICAL AID STATIONS							
MEDICAL AID STATIONS		LOCATION			PARAMEDICS			
Frontline Medical		Salmon ICP			YES	NO		
					X			
6. TRANSPORTATION								
A. Air Ambulances								
NAME		ADDRESS	PHONE	PARAMEDICS				
				YES	NO			
LifeNet – PHI – Reach [Type III- ALS, Day/Night] Air Ambulance with flight nurse		[YICC: 530-842-3515] at Redding, CA	Salmon Communications	X				
Kern County H-407 [Type II- ALS, Day/Night/Hoist] Rescue ONLY, requires patient transfer		[FICC: 707-726-1266] at Redding, CA	Salmon Communications	X				
California Highway Patrol [Type III- ALS, Day Hoist] Rescue ONLY, requires patient transfer		[YICC: 530-842-3515] at Redding, CA	Salmon Communications	X				
B. Ground Ambulances								
Salmon Ambulance 1 [4x4, Fireline Qualified] Salmon Ambulance 2 [Fireline Qualified]		Assigned to DIVS/DP's by Operations		Salmon Communications	X			
Etna Ambulance [Non-Fireline Qualified] Point of contact hail on CALCORD		Local 9-1-1 Service in Etna, CA		Salmon Communications	Varies			
7. HOSPITALS								
NAME	ADDRESS	TRAVEL TIME		PHONE	HELIPAD		BURN CENTER	
		AIR	GRND		YES	NO	YES	NO
Fairchild Medical Center L-4 Trauma	444 Bruce St. Yreka, CA Lat:41*43.201'N Long:122*38.757' W	20m	75m	ER:530-841-6292	X			X
Rogue Valley Med Center L-2 Trauma-STEMI-CVA	2825 E. Barnett Rd. Medford,OR Lat:42*19.079'N Long:122*49.904' W	40m	2h	ER:541-789-7132	X			X
Mercy Med Center Redding L-2 Trauma-STEMI-CVA	2175 Rosaline Ave. Redding,CA Lat:40*34.334'N Long:122*23.798 W	40m	3h	ER:530-225-7201	X			X
UC Davis Medical Center L-1 Truama-STEMI-CVA	2315 Stockton Blvd. Sacramento,CA Lat:38*33.290'N Long:121*27.311'	2h	5h	ER:916-734-5669 Burn: 916-734-3636	X		X	
1. Div. / Branch/ Group / Other	Staff /Location Capability		Equipment					
ICP	Jordan Williams – MEDL		O2, AED					
Div AA	Geoff Trapani FEMT O-554		BLS, 4x4					
Div K/M	Marco Garcia FEMP O-618		ALS Kit, 4x4					
Div A/D/H	Lora Trout A-189.56 EMTF / Gabe Medina A-189.55 Short Hauler		ALS Kit, O2, 4x4					
Div P	John Barker EMTF O-509 /Ron Spellman FEMP O-555							
2. Medical Special Instructions								
<i>Utilize Medical incident Report for medicals. Relay severity of medicals before relaying MIR</i>								
ICS 206 8-78	9. PREPARED BY (MEDICAL UNIT LEADER) Jordan Williams MEDL, Philip Puhok MEDL (T)			10. REVIEWED BY (SAFETY OFFICER) Joe Nishikida SOF2 Justin Brollier				



Medical Incident Report					
FOR ALL MEDICAL EMERGENCIES: IDENTIFY ON SCENE INCIDENT COMMANDER BY NAME AND POSITION AND ANNOUNCE "MEDICAL EMERGENCY" TO INITIATE RESPONSE FROM IMT COMMUNICATIONS/DISPATCH.					
<b>Use items one through nine to communicate situation to communications/dispatch.</b>					
<b>1. CONTACT Salmon August COMMUNICATIONS: Command Channels.</b>					
<i>Ex: "Communications, Div. Alpha. Stand-by for Priority Medical Incident Report." (If life threatening request designated frequency be cleared for emergency traffic.)</i>					
<b>2. INCIDENT STATUS:</b> Provide incident summary and command structure.					
<b>Nature of Injury/Illness</b>			<i>Describe the injury (Ex: Broken leg with bleeding)</i>		
Incident Name			<i>Geographic Name + "Medical" (Ex: Trout Meadow Medical)</i>		
Incident Commander			<i>Name of IC</i>		
Patient Care			<i>Name of Care Provider (Ex: EMT Smith)</i>		
<b>3. INITIAL PATIENT ASSESSMENT:</b> Complete this section for each patient. This is only a brief, initial assessment. Provide additional patient info after completing this 9 Line Report.					
Number of Patients:	Male / Female	Age:	Weight:		
Conscious? <input type="checkbox"/> YES <input type="checkbox"/> NO = MEDEVAC!					
Breathing? <input type="checkbox"/> YES <input type="checkbox"/> NO = MEDEVAC!					
Mechanism of Injury: <i>What caused the injury?</i>					
Lat/Long (Datum WGS84) <i>Ex: N 40° 42.45' x W 123° 03.24'</i>					
<b>4. SEVERITY OF EMERGENCY, TRANSPORT PRIORITY</b>					
SEVERITY			TRANSPORT PRIORITY		
<input type="checkbox"/> <b>URGENT-RED</b> Life threatening injury or illness. <i>Ex: Unconscious, difficulty breathing, bleeding severely, 2° – 3° burns more than 4 palm sizes, heat stroke, disoriented.</i>			Ambulance or MEDEVAC helicopter. Evacuation need is <b>IMMEDIATE.</b>		
<input type="checkbox"/> <b>PRIORITY-YELLOW</b> Serious Injury or illness. <i>Ex: Significant trauma, not able to walk, 2° – 3° burns not more than 1-2 palm sizes.</i>			Ambulance or consider air transport if at remote location. Evacuation may be <b>DELAYED.</b>		
<input type="checkbox"/> <b>ROUTINE-GREEN</b> Not a life threatening injury or illness. <i>Ex: Sprains, strains, minor heat-related illness.</i>			Non-Emergency. Evacuation considered <b>Routine of Convenience.</b>		
<b>5. TRANSPORT PLAN:</b>					
<b>Air Transport:</b> (Agency Aircraft Preferred)					
<input type="checkbox"/> Helispot		<input type="checkbox"/> Short-haul/Hoist		<input type="checkbox"/> Life Flight	<input type="checkbox"/> Other
<b>Ground Transport:</b>					
<input type="checkbox"/> Self-Extract		<input type="checkbox"/> Carry-Out		<input type="checkbox"/> Ambulance	<input type="checkbox"/> Other
<b>6. ADDITIONAL RESOURCE/EQUIPMENT NEEDS:</b>					
<input type="checkbox"/> Paramedic/EMT(s)		<input type="checkbox"/> Crew(s)		<input type="checkbox"/> SKED/Backboard/C-Collar	
<input type="checkbox"/> Burn Sheet(s)		<input type="checkbox"/> Oxygen		<input type="checkbox"/> Trauma Bag	
<input type="checkbox"/> Medication(s)		<input type="checkbox"/> IV/Fluid(s)		<input type="checkbox"/> Cardiac Monitor/AED	
<input type="checkbox"/> Other (i.e. splints, rope rescue, wheeled litter)					
<b>7. COMMUNICATIONS:</b>					
Function	Channel Name/Number	Receive (Rx)	Tone/NAC *	Transmit (Tx)	Tone/NAC *
<i>Ex: Command</i>	<i>Forest Rpt, Ch. 2</i>	<i>168.3250</i>	<i>110.9</i>	<i>171.4325</i>	<i>110.9</i>
COMMAND					
AIR-TO-GRND					
TACTICAL					
*(NAC for digital radio system)					
<b>8. EVACUATION LOCATION:</b>					
Lat/Long (Datum WGS84) <i>EX: N 40 42.45' x W 123 03.24'</i>					
Patient's ETA to Evacuation Location:					
Helispot/Extraction Size and Hazards:					
<b>9. CONTINGENCY:</b>					
<b>Considerations:</b> <i>If primary options fail, what actions can be implemented in conjunction with primary evacuation method? Be thinking ahead...</i>			<b>REMEMBER:</b> Confirm ETA's of resources ordered Act according to your level of training Be Alert. Keep Calm. Think Clearly. Act Decisively.		