

\* CORRECTED \*

# INCIDENT ACTION PLAN

## MODOC JULY COMPLEX

CA-MDF-000671 P5K7YC (0509)



NIGHT SHIFT

OPERATIONAL PERIOD

TUESDAY - WEDNESDAY

AUGUST 8 - 9, 2017

1800-0600 HOURS

MAPS





# INCIDENT OBJECTIVES (ICS 202)

1. Incident Name	2. Operational Period	NIGHT	Date/Time From:	Date/Time To:
MODOC JULY COMPLEX			08/08/2017 1800 TUE	08/09/2017 0600 WED

**3. Objective(s):**

Management Objectives:

- Provide for the safety of all responders by utilizing national Risk Management Standards and the implementation of appropriate mitigations.
- Share critical information affecting public safety so timely decisions and actions can be implemented.
- Reduce firefighter exposure by only engaging fire assignments with the highest probability of success.
- Provide initial attack response within the area identified by the Delegation of Authority.
- Engage cooperators and stakeholders to jointly provide for the defense of communities, infrastructure and economic interests.
- Utilize local resource specialists to identify and protect sensitive sites and cultural resource values by minimizing impacts from suppression operations.
- Maintain and enhance Community, County, State, National Forest and Stakeholder relationships through accurate and timely dissemination of information.
- Identify, assess and implement suppression repair needs, where appropriate, in coordination with the Resource Advisor following agency policy.
- Manage incident costs effectively for the values at risk through regular and ongoing cost analysis.

Control Objectives:

- Keep Cove and Steele fires within current containment lines.

**4. Operational Period Command Emphasis:**

Primary:

Using a full suppression strategy, minimize the size of the fires through the use of direct attack where safe to do so.

Alternate:

When not feasible or safe to go direct use indirect attack to minimize fire size.

Contingency:

Use indirect attack tactics at major roads and natural barriers to suppress fire & minimize firefighter exposure to extreme fire behavior.

Emergency:

Withdraw fire personnel to safety zones or ICP, ensure accountability for all personnel & reevaluate how to safely advance to suppress the fire.

**General Situational Awareness:**

- Red Flag Warning
- Heads up for possible dry lightning and increased fire behavior
- Monitor cumulus activity due to the chance of erratic winds and down drafts
- Keep your situational awareness current

**5. Site Safety Plan Required?**

Yes  No

**Approved Site Safety Plan(s) Located at:**

**6. Incident Action Plan** (the items checked below are included in this Incident Action Plan):

- |  |  |
|--|--|
| <input checked="" type="checkbox"/> ICS 202<br><input checked="" type="checkbox"/> ICS 203<br><input checked="" type="checkbox"/> ICS 204<br><input checked="" type="checkbox"/> ICS 205<br><input type="checkbox"/> ICS 205A<br><input checked="" type="checkbox"/> ICS 206 | <input type="checkbox"/> ICS 207<br><input type="checkbox"/> ICS 208<br><input type="checkbox"/> ICS 220<br><input checked="" type="checkbox"/> Map/Chart<br><input checked="" type="checkbox"/> Weather Forecast/Tides/Currents |
|--|--|
- Other Attachments:
- DEMOB LIST
  - HUMAN RESOURCE MESSAGE
  - SAFETY MESSAGE
  - TRAINING SPECIALIST MESSAGE

7. Prepared by: MITCH DIEHL Position/Title: PSC1 Signature: 

8. Approved by Incident Commander: Name: JAY KURTH IAP Page *6*

ICS 202 IAP Page Date/Time: 08/08/2017 1200

ORGANIZATION ASSIGNMENT LIST			7. Planning Section	
1. Incident Name	<b>Modoc July Complex</b>		Chief	Dave Gerboth / Ann Marx (1)
2. Date Prepared	<b>08/08/2017</b>	3. Time <b>1400</b>	Deputy Chief	Mitch Diehl
4. Operational Period	<b>08/08/17 - 08/09/17 1800-0600</b>		Resources Unit	G. Bald / J. Camacho (1) / J. Ramirez(1) / B. Lovelle(1) / S. Arjona(1)
			Situation Unit	Michael Hoose / Brandon Dethlefs / Jennifer Erickson (1) / Aaron Grove (1)
			FBAN	Brandon Ripley / Diondroy Wiley (1)
Position	Name		IMET	Ryan Walbrun / Jimmy Taeger (1)
5. Incident Commander and Staff	Incident Commander and Staff		Incident Technology Support Specialist	James Whiteside / Mike Laxo (1)
Incident Commander	Joy Kurth / Marty Adell (1)		GISS	Chris Clervi / Christopher Barrett / Matthew Estier
Deputy IC	Rocky W. Opliger		Documentation Unit	LaNette Estes (1)
Safety Officer	John Kraushaar / Dave Welch		Demob Unit	Wayne Barney / Joe Scuri (1)
Information Officer	Sean Collins / Frank Mosbacher / Celeste Prescott (1)		Training Specialist	Tom Reaves
Human Resources	Dana Simpson / John Bohmer (1)		READ	Peter Hall
Liaison	Sam Willbanks / Steve Anderson (1)		8. Logistics Section	
6. Agency Representatives	Agency Representatives		Chief	Ross Peckinpah / Cheryl Raines
Agency	Name		Communications Unit	Sol Bonilla / Nicholas Luby
MDF Agency Administrator	Deedee Harrison		Medical Unit	Eric Williams / Doug Stuart / Jeff Brooks (1)
MDF Agency Administrator Rep.	Chris Christopherson / Matthew Bokoch (1)		Food Unit	Mike Krime / Kenneth Breskin / Sue Zahn (1)
CALFIRE Agency Administrator LMU	Don Gordon		Facilities Unit	Robert Griffith
U.S. Fish and Wildlife	Ken Griggs / Greg Austin		Supply Unit	Teresa Steiman / Jamie Capple
Oregon Dept. Forestry	Ron Zilli		Security Manager	Luke Johnson
Lava Beds NM	Larry Whalton		Ground Support	Ron Brewer / Jeff Burch
California Highway Patrol	Danny Koestler		9. Operations Section	
Tribal Representative	Ken Sandusky		Chief	Rob Laeng
Fremont- Wrinema NIF / Lakeview District BLM	Barry Shullanberger		Planning OPS	Jake Cogle / Ken Gregor (1)
Modoc County OES	A.J. McQuirrie		C. IA	Jesse Brunk
Modoc County Sheriff	Mike Poindexter / William "Tex" Dowdy		North IA	
Northern CA Fire Cooperative Assoc.	Darin Quigley		d. Air Operations Branch	
California Conservation Corps	Shawn Fry		Air Operations Branch Director	Kevin Murray / Ty Miller
BNSF Railroad	Joe Aho		Air Tactical Supervisor	Gary Monday
PG&E	Mike Weaver		Air Support Supervisor	James Stratton
Collins Pine	Lee Fliederjohann		Helibase Manager	Brad Nelson
Cal OES Agency Administrator Rep.	John Salvate		10. Finance Section	
			Finance Section Chief	Judy Reynolds
			Time Unit	Loni Holt / Shelia Miner
			Procurement Unit	Donald Tinsley
			Cost	Vicki Wilson
			Comps / Claims Unit	Scott Parsons / Mandi Heitman
			Prepared by	
			Gina Bald (RESL)	



## Modoc July Complex Fire Weather Forecast



FORECAST NO: 25

NAME OF FIRE: Modoc July Complex

PREDICTION FOR: 1800-0600 night shift

UNIT: CA-MDF

SHIFT DATE: 8/8-8/9

SIGNED:

Incident Meteorologist Trainee: Jimmy Taeger

TIME AND DATE  
FORECAST ISSUED: 1200 noon on 8/8

...*Red Flag Warning Through Tuesday Evening for Abundant Lightning*...

**WEATHER DISCUSSION:** Scattered thunderstorms will continue across the area through 2200, with the Red Flag Warning in effect through 2200 for abundant lightning. Frequent lightning and gusty, erratic winds are expected near storms. Nearly stationary storms could produce 0.25-0.50 inches of rain. Skies overnight will become partly cloudy, with lows in the 50s around dawn. Excellent RH recovery is expected in the evening near storms, and then RH will be near 60-70% by 0600. Scattered thunderstorms are expected again Wednesday evening across the area.

\*\*\*Thunderstorms imply the possibility of gusty and erratic winds\*\*\*

**WEATHER FORECAST FOR TONIGHT:**

**WEATHER:** 50% chance of thunderstorms this evening. Otherwise, partly cloudy skies.

**LOW TEMPERATURES:** 52-60 by 2300 near storms and by 0600 away from storms. Little change.

**HUMIDITY:** 70-80% in the evening near storms. 25-35% away from storms through 0100, then most areas becoming 50-70% by 0600. Little change.

**20 FT WINDS:**

**RIDGE TOPS** -- West 4-8 mph, with gusts to 10 mph in the evening, becoming light overnight.

**SLOPE/VALLEY** -- Upslope 2-5 mph with gusts to 8 mph in the evening, becoming downslope/valley 3-6 mph overnight.

**HAINES INDEX:** 4 in the evening.

**LAL:** 3 in the evening, lowering to 1 overnight.

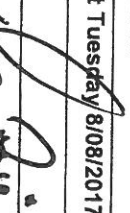
**STABILITY/INVERSION:** Strong night time inversions developing over the Cove Fire.

**OUTLOOK FOR WEDNESDAY:** Scattered thunderstorms in the afternoon and evening. Be aware of outflow wind potential and any new starts from lightning in your Division or for initial attack activity. Highs will be in the low to mid 80s, with minimum relative humidity around 20%. Haines 4 and LAL 3 expected. Southwest winds 4-8mph with gusts to 15 mph in the afternoon and evening.

**EXTENDED OUTLOOK:** Isolated thunderstorms Thursday, then a trend to drier conditions by the weekend. Downdrafts will have the potential to send strong outflow boundaries across any of the fire scars on the July Complex, and lightning will continue to be a threat. Temperatures will slowly increase closer to 90 by the weekend and relative humidity will slightly decrease into the teens by Friday.

**SAFETY INFORMATION:** Seek shelter from lightning if a storm approaches. If you feel the hair on your arms or head "stand up," there is a high probability of a strike in the vicinity. Crouch or sit on a pack with your legs together. Take shelter in vehicles if possible.

# FIRE BEHAVIOR FORECAST

FORECAST NUMBER: 027	TYPE OF FIRE: Wildfire Full Suppression
FIRE NAME: Modoc July Complex	OPERATIONAL PERIOD: Night Shift Tuesday 8/08/2017
DATE ISSUED: 08/08/2017	TIME ISSUED: 1200
UNIT: CA-MDF-000671 P5KYVC	SIGNED: Diondray Wiley (FBAN) (T) 

## INPUTS

**WEATHER SUMMARY: "RED FLAG WARNING FOR ABUNDANT LIGHTNING FROM 1200-2200"**  
 \*\*\*\*\* WIND SCHEDULE \*\*\*\*\*

### 20ft. winds

**Ridgetop:** West 4-8 mph with gust to 10 mph from 1800-2200 becoming light overnight  
**Slope/Valley:** 2-5 mph with gust to 8 mph from 1800-2200 becoming 3-6 downslope overnight

**Note:** Outflow winds (30 mph possible) from passing thunder cells could come from any direction at any time cells are present.

(See attached weather forecast for specific weather information)

## OUTPUTS

### FIRE BEHAVIOR

**GENERAL:** Sunny conditions throughout the day have reduced the fuel moisture in 1hr. and 10hr. fuels, in some cases, to single digit values. The 10hr. fuels will begin to receptive to ignition until the early hours. Cloud cover/rain will help to mitigate fire behavior. Fuels outside of the immediate burn that haven't received any wetting rain remain very receptive to ignition. Remember wind can override conditions and promote active fire behavior.

### LOCAL THRESHOLDS – WATCH OUT

Combinations of any of these factors can greatly increase fire behavior:

Thresholds: <b>20' winds</b> over 5 mph	RH less than 20%	Temp over 90°	ERC over 64	BI over 51
Forecasted: <b>20' winds</b> , 4-8 mph	RH 25-35% (away from storms)	Temp 52-60°	ERC 59-64	BI 36

**Probability of Ignition: Near Storms: 20%**  
 Away from storms: 40%

### SPECIFIC:

**IA Resources:** Be aware of the entire fire area as there is an abundant amount of receptive dry fuels. Drying from this afternoon will keep fuels receptive to active fire behavior with a probability of ignition of 60% (away from cloud cover/rain during the day shift). Following wetting rains, 10hr. Fuel moistures have been increasing but remain receptive to burning for several hours, due to time lag. Remember, all it takes is 1hour for fine dead fuels to dry. Do not underestimate the fire behavior associated with the timber, brush and grass fuel models in this area.

**AIR OPERATIONS:** No night flying this operational period.

### THUNDERSTORM SAFETY

Observe the 30/30 rule: If you see lightning and hear the thunderclaps follow in less than 30 seconds, take the storm precautions identified on Page 21 of the IRRPG. Do not resume work in exposed areas until 30 minutes after storm activity has passed.

## Division/Group Assignment List (ICS 204 WF)

<b>1. Incident Name:</b> MODOC JULY COMPLEX		<b>3.</b>				
		<b>Branch:</b> IA	<b>Division/Group:</b> NORTH IA			
<b>2. Operational Period:</b> NIGHT						
Date/Time From: 08/08/2017 1800	TUE	Date/Time To: 08/09/2017 0600	WED			
<b>4. Operations Personnel</b>						
<b>OPERATIONS CHIEF</b> ROBERT LAENG	<b>DIVISION/GROUP SUPERVISOR</b> JESSE BRUNK					
<b>5. Resources Assigned this Period</b>						
Strike Team / Task Force / Resource Designator	LWD	Leader	Number Persons	Drop Off PT./Time	Pick Up PT./Time	
CRW2 NORTH PACIFIC 712C C-67	08/13	ALEXANDRO GALICIA	20	ICP/1800	ICP/0600	
ENG3 S/T 5780C E-157	08/09	ROBERT GIOVANNETTI	24	ICP/1800	ICP/0600	
WTS2 JJ WATER E-70	08/15	JESSICA HEMPHILL	1	ICP/1800	ICP/0600	
TFLD O-211	08/12	JEFF RIGGIN	1	ICP/1800	ICP/0600	
FEMP O-152	08/11	JACOB LONG	1	ICP/1800	ICP/0600	
FEMT O-162	08/11	LARRY BARLOW	1	ICP/1800	ICP/0600	
<b>6. Control Operations/Work Assignments:</b>						
<ul style="list-style-type: none"> <li>• Respond to new incidents as requested through Modoc Dispatch.</li> </ul>						
<b>7. Special Instructions:</b>						
<ul style="list-style-type: none"> <li>• Track and report water usage and turn into Finance.</li> <li>• Provide location of accountable property and dozer lines and turn into Situation Unit.</li> <li>• Back haul trash.</li> <li>• Pay close attention to Fire Weather Forecast.</li> <li>• If a Safety Officer is needed, contact Communications via radio and ask them to contact Dave Welch.</li> <li>• CHECK COMM PLAN.</li> <li>• SELECT APPROPRIATE COMMAND CHANNEL BASED ON FIRE LOCATION.</li> </ul>						
<b>8. Division/Group Communication Summary</b>						
Function	Channel	RX Frequency N/W	RX Tone/NAC	TX Frequency N/W	TX Tone/NAC	Mode
COMMAND	1	173.7875 N	SEE 205	162.4875 N	SEE 205	A
TACTICAL RE T6	5	166.2375 N	0.0	166.2375 N	0.0	A
TACTICAL RS T4	6	166.5500 N	0.0	166.5500 N	0.0	A
AIR TO GROUND 43	13	167.6000 N	0.0	167.6000 N	0.0	A
AIR TO GROUND 08	14	166.8750 N	0.0	166.8750 N	0.0	A
<b>9. Prepared By (Resource Unit Leader)</b> BRIAN LAVELLE (T)		<b>Approved By (Planning Section Chief)</b> ANN MARX PSC1(T)		<b>Date</b> 08/08/2017	<b>Time</b> 1400	

ADDED TO NORTH IA:  
 ENG 6 E-84 MORETOWN Tony Vasquez 4  
 DOZER 29 E-135 CEDAR HAYES 1  
 DOZER 79 E-234 Victor Rivers 2

# Modoc July Complex – Safety Message

INCIDENT #CA-MDF-000671

DATE: 8-8/8-9-17 TIME: 1800-0600 Night

## **Firefighter Fatigue/Driver Safety/Traffic Safety**

With continued physically demanding operational periods, expect and monitor fatigue of all crew members working in and around your division. Take the following steps to limit and address fatigue, and driver and traffic safety:

1. Follow work/rest guidelines.
2. Driving conditions and stopping distances will change when the roads are wet or muddy,
3. Extra caution should be taken during I/A response driving due to adrenaline and unfamiliarity with roads.
4. Stop, look and listen at **all** railroad crossings. The rail lines in this area are still active.
5. Use extra caution and be aware of cross traffic and pedestrian traffic when entering/exiting the ICP.
6. Beware of dusty and congested vehicle and pedestrian conditions in the ICP parking lots and sleeping areas.

## **Hazard Tree Safety**

Hazard trees, both dead snags and live green trees, are one of the most common risks encountered on the fireline. All firefighters should frequently survey their work area for potential hazard trees.

### **Situation Awareness**

#### **Environment**

- Current and forecasted winds
- Night operations
- Steep slopes
- Diseased or bug kill areas
- Number and height of hazard trees
- Anticipated burn-down time
- Potential for trees to domino

#### **Hazard Tree Indicators**

- Trees burning for any period of time
- High risk tree species (rot and shallow roots)
- Numerous downed trees
- Dead, broken, or burning tops and limbs overhead
- Accumulation of downed limbs
- Absence of needles, bark or limbs
- Leaning or hung-up

## **Thunderstorm Safety**

With the predicted weather (heat, dry lightning) take the time to considered the following before you engage;

- Standard Firefighting Orders
- Look Up, Down and Around
- Watch Out Situations
- Common Tactical Hazards
- LCES
- Planning for Medical Emergencies
- Escape Routes
- Common Denominators of Fire Behavior on Tragedy Fires
- Safety Zones
- IRPG page 21

**Are there unseen spots or new fires below you???**



11. UNBURNED FUEL BETWEEN YOU AND THE FIRE






**INCIDENT RISK ANALYSIS (ICS 215A)**

**MODOC JULY COMPLEX**

**NIGHT SHIFT**

DIV	HAZARDOUS ACTIONS / CONDITIONS	MITIGATIONS / WARNINGS / REMEDIES
ALL	FIRE WEATHER	<ul style="list-style-type: none"> <li>• Winds increasing or changing direction.</li> <li>• Weather becoming hotter and drier.</li> <li>• Unstable atmosphere can promote rapid fire growth.</li> </ul>
ALL	THUNDERSTORMS	<ul style="list-style-type: none"> <li>• Refer to IRPG page 21, Thunderstorm guidelines.</li> <li>• Heads up for erratic winds and possible downdrafts.</li> <li>• Follow the 30/30 rule.</li> </ul>
ALL	SPOT FIRES	<ul style="list-style-type: none"> <li>• Size up prior to engagement.</li> <li>• Watch for multiple spots.</li> <li>• Ensure LCES is in place.</li> <li>• Maintain Situational Awareness at all times.</li> </ul>
ALL	DANGER TREES	<ul style="list-style-type: none"> <li>• Follow "Hazard Tree Safety" guidelines, IRPG pages 22.</li> <li>• Post lookouts, or use a spotter in mop-up areas with personnel.</li> <li>• Don't park vehicles or take breaks in high concentrations of hazard trees.</li> <li>• Establish trigger points for disengagement during high wind events".</li> </ul>
ALL	HEAT RELATED ILLNESS (HRI) & DEHYDRATION	<ul style="list-style-type: none"> <li>• Drink 2 to 1 ratio of water to sports drinks.</li> <li>• Take frequent breaks, minimum of 10 minutes every hour.</li> <li>• Recognize symptoms of HEAT RELATED ILLNESS which include: Lack of energy, headaches, dizziness, lack of rest, no hunger, poor eating habits, hot skin, and lack of sweating.</li> </ul>
ALL	FIREFIGHTER FATIGUE	<ul style="list-style-type: none"> <li>• Follow work rest guidelines.</li> <li>• Take breaks as needed.</li> <li>• Stay hydrated and well nourished.</li> <li>• Supervisors assess the fatigue levels of your crew members.</li> </ul>
ALL	TRAFFIC AND DRIVING	<ul style="list-style-type: none"> <li>• Practice "Defensive Driving" techniques.</li> <li>• Use spotters when backing, always use headlights.</li> <li>• Use warning lights when working on roads or traveling in smoke.</li> <li>• Reduce speed when dusty, maintain adequate spacing with other vehicles.</li> <li>• Some roads are dead end with poor turn around, scout roads first.</li> <li>• Watch for livestock.</li> </ul>
ALL	MOP UP	<ul style="list-style-type: none"> <li>• Conduct thorough briefing for all personnel (inside rear cover IRPG).</li> <li>• Use all required PPE, including eye protection.</li> <li>• Maintain proper spacing and overhead clearance.</li> <li>• Be alert for stump holes and root cavities.</li> <li>• Minimize exposure to smoke, and rotate personnel into clean air when practical.</li> <li>• Evaluate unburned islands/increase situational awareness.</li> </ul>
ALL	HEAVY EQUIPMENT OPERATIONS	<ul style="list-style-type: none"> <li>• Ensure communications are established with operators.</li> <li>• Use hand signals if other communications are unavailable.</li> <li>• Maintain a minimum 2 ½ tree height exclusion area around equipment.</li> <li>• Use a spotter when backing.</li> </ul>
ALL	AIR OPERATIONS	<ul style="list-style-type: none"> <li>• Follow Aviation "Watch-Out Situations" on page 44, IRPG.</li> <li>• Don't plan on air resources for medical transport or resupply.</li> <li>• Refer to page 57, IRPG for directing bucket drops.</li> <li>• Ensure positive communications with all air resources.</li> </ul>
INCIDENT NAME <b>MODOC JULY COMPLEX</b>  ICS 215a		DATE PREPARED: <b>August 8, 2017</b>  OPERATIONAL PERIOD <b>Night Shift 8/8-8/9/17</b> 1800-0600 Prepared by: John Kraushaar
TIME PREPARED: <b>1000 HOURS</b>		

# MEDICAL PLAN ICS 206

1. INCIDENT NAME  
**Modoc July  
Complex**

2. DATE PREPARED  
August 8, 2017

3. TIME PREPARED  
1100

4. OPERATIONAL PERIOD  
August 8, 2017  
1800-0600

## 5. INCIDENT MEDICAL AID STATIONS

MEDICAL AID STATIONS	LOCATION	PARAMEDICS YES NO
Frontline Medical	Modoc July Complex ICP	X

## A. AIR AMBULANCES

NAME	LOCATION	PHONE	PARAMEDICS YES NO
SEMSA Air 2 - (Non Hoist) NVG Capable	Adin, CA 96006	Command to Communications	RN/PM
REACH - (Non Hoist) NVG Capable	Redding, CA 96003	Command to Communications	RN/PM
PHI Air Medical - (Non Hoist) NVG Capable (No Unimproved Helispot Landing)	Redding, CA 96003	Command to Communications	RN/PM
CDF 202 - Hoist Capable No night Ops	Bieber CDF	Command to Communications	X

## B. GROUND AMBULANCES

NAME	LOCATION and PHONE NUMBER	PARAMEDICS YES NO
Mountain Medics	IA NORTH Command	X

## 7. HOSPITALS

NAME	ADDRESS	TRAVEL TIME		PHONE	HELIPAD		BURN CTR	
		AIR	GRND		YES	NO	YES	NO
Modoc Medical Center	228 W. McDowell Atturas, CA	15m	40m	(530) 233-7037	X			X
Mayers Memorial Hospital	43563 Hwy 299 East Fall River Mills, CA	20m	55m	(530) 336-7543	X			X
Rogue Regional Medical Center (Level 2 Trauma)	E. Barnett Rd Medford, OR	50m	2.5hrs	(541) 789-7132	X			X
Mercy Medical Center (Level 2 Trauma)	2175 Rosaline Ave Redding, CA	50m	2.5hrs	(530) 225-7201	X			X
UC Davis Medical Center (Level 1 Trauma)	2315 Stockton Blvd Sacramento, CA	1.5h	6h	(916) 734-5669 (916) 734-3636 Burn Center	X			X

## 8. MEDICAL EMERGENCY PROCEDURES

### LINE MEDICAL EMERGENCY:

Crew Supervisor contact Division Supervisor/Operations with patient complaint, condition and location.  
Division Supervisor/Operations contacts Communication:

- Division Supervisor/Operations to use "Injury or incident communication protocol" on next page
- Division Supervisor/Operations will run medical emergency on command channel
- Communications will contact the Medical Unit Leader on Command channel.

Medical Unit Leader will:

1. Have communications dispatch ground/air transport resources
2. Notify receiving hospital of injury status.
3. Develop primary and contingency transport plan
4. Notify Incident Commander, Safety, Logistics and Operations

### CAMP MEDICAL EMERGENCY:

Contact Communications with patient complaint/condition and location, via LOGS Net

Medical Unit contacts:

- Safety
  - Logistics
  - Operations
- Medical Unit Leader will:
1. Contact Communications to dispatch ground/air transport resources
  2. Notify receiving hospital of injury status
  3. Develop primary and contingency transport plan

206 ICS

9. PREPARED BY: (Medical Unit leader)  
Doug Stuart (MEDL) *[Signature]*  
Jeff Brooks MEDL *[Signature]*  
Chris Schilling MEDL *[Signature]*

10. REVIEWED BY: (Safety Officer)  
CIIMT 4 Safety Officer (SOF1)

*[Signature]* SOF1



# Injury or Incident Communications Protocol

DECLARE:                      Medical Emergency                      or                      Non-emergency Medical transport

Best transport method: (circle)         Ambulance                           Helicopter                           Vehicle

Location: (Div. & Lat / Long) \_\_\_\_\_

**GPS Format: WGS84 Degrees, Decimal, Minutes**

Situation \_\_\_\_\_

Any special equipment required \_\_\_\_\_

Number of injured \_\_\_\_\_                      Type of injuries \_\_\_\_\_

Closest pick up point (DP, Helispot) \_\_\_\_\_

Level of consciousness \_\_\_\_\_                      Resp. \_\_\_\_\_                      Pulse \_\_\_\_\_                      BP \_\_\_\_\_                      Weight \_\_\_\_\_  
 (alert & oriented x 1-4)

Injury \_\_\_\_\_                      Agency (No Names) \_\_\_\_\_

Medical History/Allergies \_\_\_\_\_

## Air Transportation Triage

	<i>Ground or Air Ambulance to Hosp.</i>	<i>Transport to Med Unit</i>
<b>Mechanism</b>	<i>Hit by a falling tree or large branch Fall of 10' or more Insect bite with shortness of breath Signs of heat stroke (hot, dry, disoriented) Burn Injury greater than 1% body area</i>	<i>Minor dehydration Cut or laceration with bleeding controlled Minor bites and Stings Minor burns</i>
<b>Area Injured</b>	<i>Significant Blunt or Penetrating Trauma to Head, Neck, Chest, Abdomen or Pelvis Any Arm or Leg fracture above the Joint</i>	<i>Minor blunt trauma Minor penetrating trauma Extremity sprains and strains Simple fracture below elbow or knee</i>
<b>Symptoms</b>	<i>Disoriented Chest Pain or Shortness of Breath Weak or absent radial pulse Pale, cold and sweating</i>	<i>Alert and oriented No shortness of breath Good pulses</i>

*If air or ground ambulance is DELAYED:*

*Package and transport patient to rendezvous with ambulance. Re-route EMS helicopter to rendezvous point as appropriate.*

**If Declaring an "Incident within the Incident"**

The closest DIVS will respond to manage the incident. They are responsible for giving an accurate size up, ensuring scene safety, setting priorities and initiating an appropriate response.

The closest Safety Officer and Line EMS will respond to the scene to assist the Branch Director or DIVS. Secure site and begin initial investigation when situation is stabilized.

INCIDENT RADIO COMMUNICATIONS PLAN			Incident Name <b>MODOC JULY "IA ONLY"</b>			Date/Time Prepared <b>8/8/2017 1000 hrs</b>		Operational Period Date/Time <b>8/8/2017 1800-0600 hrs</b>		
Ch #	Function	Channel Name/Trunked Radio System Talkgroup	Assignment	RX Freq N or W	RX Tone/NAC	TX Freq N or W	Tx Tone/NAC	Mode A, D or M	Remarks	
1	COMMAND	ADM TN5	IA MODOC	173.7875 N	0.0	162.4875 N	146.2	A	GROUSE MT T5	
2	COMMAND	ADM TN7	IA MODOC	173.7875 N	0.0	162.4875 N	167.9	A	RED SHALE MT T7	
3	COMMAND	ADM TN3	IA MODOC	173.7875 N	0.0	162.4875 N	131.8	A	LIKELY MT T3	
4	COMMAND	ADM TN8	IA MODOC	173.7875 N	0.0	162.4875 N	103.5	A	WIDOW MT T8	
5	TACTICAL	R5 T6	ALL DIVISIONS	168.2375 N	0.0	168.2375 N	0.0	A		
6	TACTICAL	R5 T4	ALL DIVISIONS	166.5500 N	0.0	166.5500 N	0.0	A		
7	TACTICAL	FOR RX	ALL DIVISIONS	170.7375 N	0.0	BLANK	0.0	A	<b><u>RX ONLY-FOR MONITORING</u></b>	
8	TACTICAL	CDF T 3	ALL DIVISIONS	151.1750 N	192.8	151.1750 N	192.8	A		
9	TACTICAL	CDF T10	ALL DIVISIONS	151.4000 N	192.8	151.4000 N	192.8	A		
10	TACTICAL	NIFC T2	ALL DIVISIONS	168.2000 N	0.0	168.2000 N	0.0	A		
11	TACTICAL	NIFC T7	ALL DIVISIONS	168.2500 N	0.0	168.2500 N	0.0	A		
12	TACTICAL	VFIRE 22	ALL DIVISIONS	154.2650 N	156.7	154.2650 N	156.7	A		
13	AIR/GROUND	AG-43	ALL DIVISIONS	167.6000 N	0.0	167.6000 N	0.0	A		
14	AIR/GROUND	AG-08	ALL DIVISIONS	166.8750 N	0.0	166.8750 N	0.0	A		
15	MEDICAL COORDINATION	CALCORD	ALL DIVISIONS	156.0750 N	156.7	156.0750 N	156.7	A		
16	AIR GUARD	GUARD	ALL DIVISIONS	168.6250 N	0.0	168.6250 N	110.9	A	<b>EMERGENCY USE ONLY TONE 1</b>	

Special Instructions: July Communications PH #: 1-925-588-6853

Prepared By (Communications Unit) *Sal Bonillia Jr.* -COML *Nick Luby* COML (t)

Signature: \_\_\_\_\_  
Date/Time: 8/8/2017 1000

FIRE SUPPRESSION REPAIR PLAN

**Guidelines for dozer lines, hand lines, helispots, spike camps, drop points, water sources and safety zones:**

*Note: Where there is more rock than soil on control lines with slopes 5% or greater, waterbars are not needed as long as the non burnable debris on the line will dissipate the water enough to prevent channeling.*

Stage 1) Soil and rocks will be put back on control lines and spread. Waterbarring will be completed where appropriate. No burnable material will be placed on the direct control lines.

Stage 2) In addition to stage 1 burnable material/debris will be placed on the lines and spread. Pull slash and downed trees over dozer line to reduce erosion and prevent unauthorized vehicular use.

Contingency line will be repaired as stage 2.

Obliterate any berms from the outside edge of existing fireline. Work material back onto the line. Do not sidecast berm material into or near stream channels.

Restore Forest roads to pre-fire suppression activities. Blade and grade travelway, remove berms, clean ditches and culvert inlets, chip roadside slash.

Repair fences damaged resulting from fire suppression activities.

Remove all improvised dams from drainages created for pumps and drafting. Area should be returned to pre fire suppression activities.

Water bars should be constructed at least 30 degrees perpendicular to the fireline. Make sure waterbars outlets are open.

Dozer/Hand line (% slope)	Maximum Distance Apart (feet)	
1 – 5	200	Waterbars should be no further apart than this. When in doubt, put in more. Use only excavators for this work. Make sure waterbars outlets are open (often requires alittle shovel work).
6 – 20	125	
21 – 40	60	
41 – 60	40	
>60	25	

**Watercourses:**  
All slash, soil, and debris deposited into watercourses resulting from fire suppression activities shall be removed and stabilized.

**Concentrations of Green Timber**  
Areas that have concentrations of fallen or pushed over trees (not juniper) will need to be addressed. Trees over 10” DBH should have the root wad removed at the base and the tree placed with others in an organized fashion. All of the butts of the trees even, stacked on top of each other so that there 4-6 trees in a bundle. If possible the bundles will be parallel to the road and not overlapping.

Trees less than 10” DBH and root wads should be handled as slash/debris and used for covering dozer line to prevent vehicular travel and reduce erosion.

STANDARD OPERATING PROCEDURES—FINANCE SECTION  
16 HOURS IS NOT A GUARANTEE - IT IS HOURS WORKED!!

---

**WORK REST CYCLE**

IT IS NATIONAL DIRECTION TO MEET 2 TO 1 WORK/REST RATIO (1 hour of sleep/rest for every 2 hours of work). Every effort shall be made to manage work hours so you don't exceed the maximum of 16 hrs. Work hours exceeding 16 hours shall be approved by your supervisor in advance, and a justification/mitigation form completed for review by Section Chief & approved by IC. It is each person's responsibility to comply with this direction to manage for fatigue and safety.

**OPERATIONAL SHIFTS**

Pay status for assigned overhead and crews on the fireline will not start prior to the posted briefing time and will terminate on arrival back in camp (except for debriefing—additional hours may be accrued by those required to attend debriefing). Supervisors will be allowed ½ hour prior to briefing and after return to camp to ready crew and equipment.

**DUTY STATUS**

Division/Group supervisors and Unit Leaders are responsible for establishing on and off duty status. The objective is a 2 to 1 work/rest ratio. Personnel will normally work, travel, and/or be placed on ORDERED standby 8 to 16 hours per day and be off duty 8 hours or more (breaks count towards 8 hrs). Off duty time will be in a non-pay status. Each federal employee is guaranteed at least 8 hours of pay status each 24-hour period (midnight to midnight) unless it is the first or last day of an assignment or stated otherwise in a contract or agreement.

**PERSONNEL/EQUIPMENT TIME REPORTING**

Personnel time will be reported to the Time Unit and daily once they are signed by the next level supervisor. OES resources will be monitored by OES Agency Rep (if assigned) for 2/1 Work Rest compliance. Situations entitling you to HAZARD PAY are to be noted in remarks (ie. HP=Uncontrolled Fireline, hovering hookups, low level flights, etc.)

Private Contracted Equipment time must be tracked on a Shift Ticket daily and hours on shift noted even if it is a daily rate. When swapping out operators you need to notify Finance as well as changing from single to double shift and vice versa.

Supervisor's - If you are responsible for daily tracking of equipment or personnel, please ensure you understand the agreement, and follow the rules provided in this document. Do not sign documents for resources you did not manage unless you have knowledge of their assignment hours.

**MEAL AND OTHER WORK BREAKS**

Compensable meal periods are the exception, not the rule (5 CFR 551.411 © and 29 CFR 785.19(a)). Until the fire is controlled, personnel on the fireline MAY BE compensated for meal periods if all of the following conditions are met: 1) The fire is not controlled and 2) The Operations Section Chief makes a decision that it is critical to the effort of controlling the fire that personnel remain at their post of duty and continue to work as they eat, and 3) The compensable meal break is approved by the supervisor at the next level and documented on CTR. For personnel in support positions, and fireline personnel after control of a fire, a meal period of at least 30 minutes must be ordered and taken for each work shift of eight hours or more. In those situations where personnel cannot be relieved from work and must remain at a post of duty, a meal period may be counted as time worked, which will be compensable. If breaks are NOT able to be taken, CTR should have a statement in remarks explaining the situation. Kitchen closes at 2200 so show dinner break unless you went off clock by 2130.



**We are what we repeatedly do. Excellence  
therefore is not act but a habit. – Aristotle**

**Keep up the great work!**

**Dana Simpson**

661.477.4862

**John Bohmer (t)**

707.410.7936

# TRAINING SPECIALIST MESSAGE

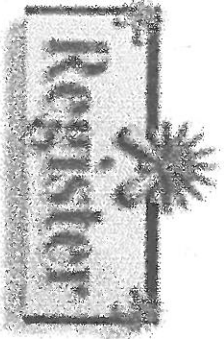
COMMAND & GENERAL STAFF  
and  
ASSIGNED RESOURCES  
AT THE MODOC JULY COMPLEX

If you have a Trainee please make sure  
That they have checked in with the Training Specialist  
Located in a trailer next to Information @ the ICP.

This will ensure that they receive Credit for this Assignment.

Thank you!

Tom Reaves



August 8, 2017  
Night Operational Period



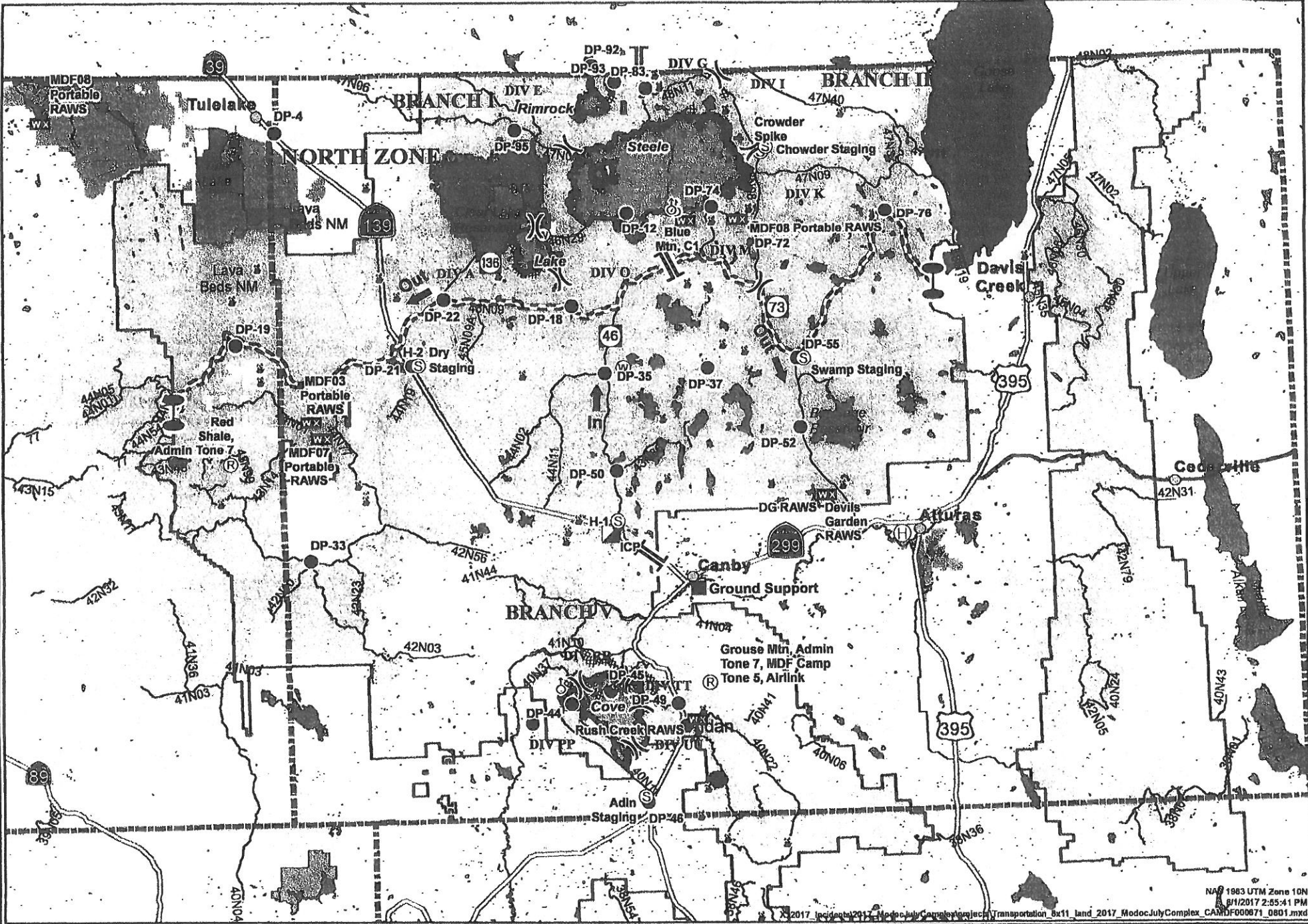


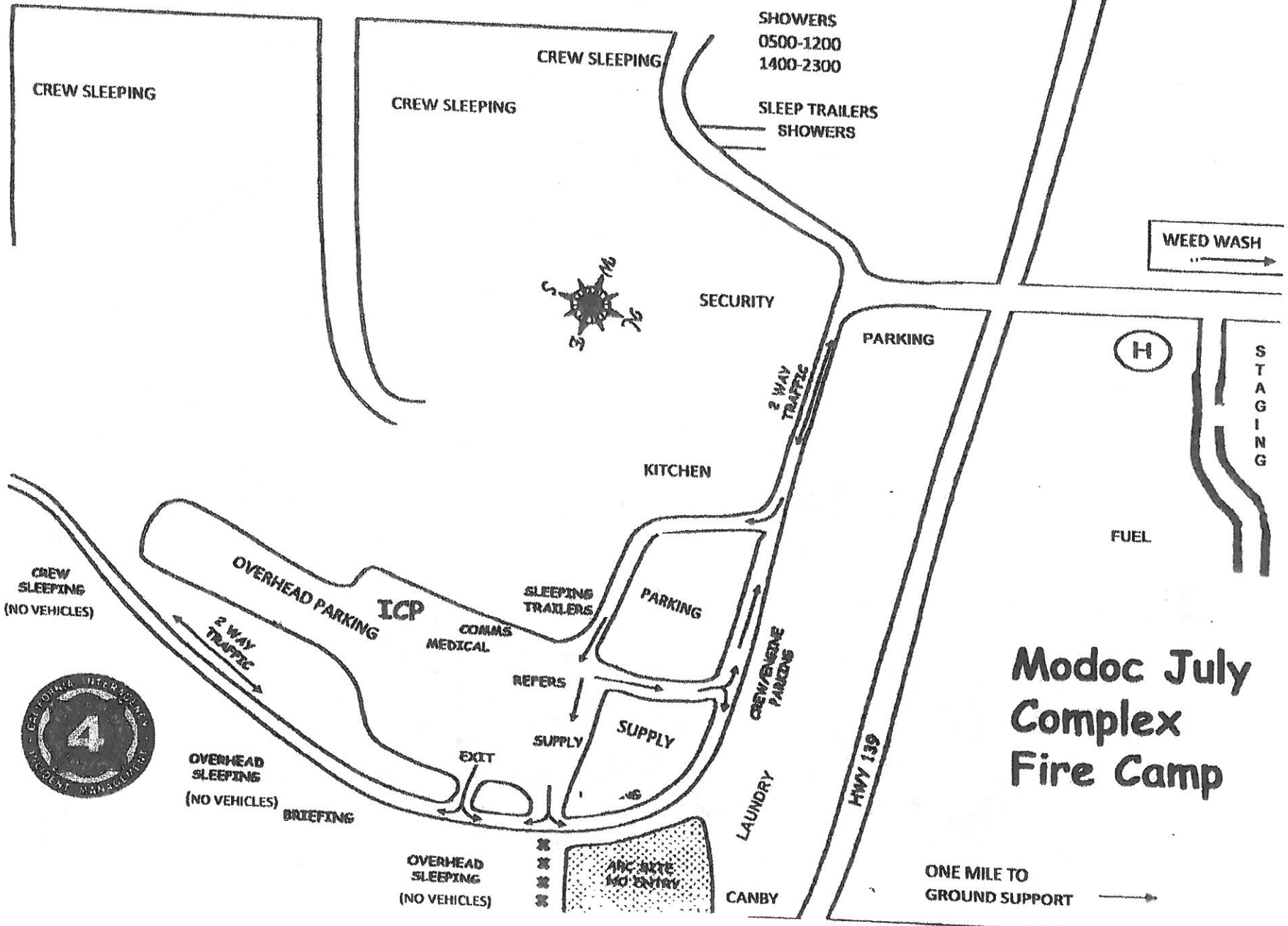
**MODOC JULY COMPLEX CA-MDF-000671**  
**TRANSPORTATION MAP**  
**AUGUST 1, 2017**

0 2½ 5 10



Miles





# Modoc July Complex Fire Camp



ONE MILE TO GROUND SUPPORT →

## DIVISION FIRELINE ORDER FORM

<b>Date &amp; Time Order Was Placed</b>	<b>Order #/DIV</b>	<b>Mode of Delivery</b>	<b>Location of Delivery</b>
Current Date & Time:		GROUND SUPPORT PICK UP IN SUPPLY HELO	DIV, DP, LZ, or Lat/Long
Needed by:			

Order received in COMM by: \_\_\_\_\_ Time: \_\_\_\_\_

Order received in SUPPLY by: \_\_\_\_\_ Time: \_\_\_\_\_

Order Shipped by TRANS or PU in Supply: \_\_\_\_\_ Time: \_\_\_\_\_

**PLEASE ORDER BY ITEM NUMBER**

**\*Hose Kit A, contains the following:**  
 10 RO 1½" Hose; 10 RO 1" Hose; 10 EA 1½" Gated Wyes; 10 EA 1½" to 1" Reducers; 10 EA 1" Nozzles

Item	Item	Quantity	Item	Item	Quantity
1	*Hose Kit A, 1000' Hoseslay		28	Fusee, BX	
2	Hose, 1½", 100'		29	Batteries, AA, PG (24 PG/BX)	
3	Hose, 1", 100'		30	Ribbon, Flagging (Specify Color)	
4	Hose, Garden ¾", 50'		31	Shovel	
5	Nozzle, KK Type, 1½"		32	Pulaski	
6	Nozzle, KK Type, 1"		33	Combi-Tool	
7	Nozzle, Forester, 1"		34	McCloud	
8	Nozzle, Garden ¾"		35	Washcloth, waterless, cleansing	
9	Wye, Gated 1½"		36	Sprinkler Kit	
10	Wye, Gated 1"		37	Mop-Up Kit, 3-wand	
11	Wye, Gated ¾"		38	Chainsaw Kit (TRACKABLE)	
12	Inline Tee, 1½"x1"		39	Water, Cubies	
13	Reducer, 1½"x1"		40	Water, Bottled, Cases	
14	Reducer, 1"x¾"		41	Gatorade, Bottled/Cases	
15	Shut-off Valve, ¾"		42	WRE's (12/BX)	
16	Foam, 5 GL			<b>ADD ANYTHING NOT LISTED</b>	
17	Backpack Pump				
18	Pumpkin, 1500/3000/6000 GL				
19	Folding Tank, 1000/1500 GL				
	<b>PUMP KITS</b>				
20	Lightweight (TRACKABLE)				
21	Mark III (TRACKABLE)			<b>ACCOUNTABILITY PROPERTY #'S</b>	
22	Fuel, Unleaded, 5 GL Can				
23	Fuel, Drip Torch, 5 GL Can				
24	Fuel, Diesel, 5 GL Can				
25	2-Cycle Oil, PT				
26	Bar Oil, QT				
27	Drip Torch, EA				

SPECIAL NOTES

## FIRE REPLACEMENT PROCEDURES

### Submit requests for all incident replacements on a 213, General Message:

- Separate cache from non-cache items on separate 213's!
- Include explanation for lost or damaged items.
- Include DIVS signature on the 213 to verify the item(s) has/have been lost or damaged and support the circumstances surrounding it.
- For stolen items, contact your supervisor and Security Manager as soon as practical.

### FOR CACHE ITEMS

Requesting Resource is NOT Being Demobed and Requested Items ARE Available in Supply:

- R&D shall fill request and note on the 213.

Requesting Resource is NOT Being Demobed and Requested Items are NOT Available in Supply.

- The Supply Unit will place an order for the requested items through the regular cache order process on the incident. The order will be shipped to the incident and replacement will take place at the Supply Unit and noted on the 213.

Requesting Resource IS Being Demobed and Requested CACHE Items are NOT in Stock in Supply:

- Along with the 213, complete an *OF-315, Incident Replacement Requisition* for cache items only and take to SPUL for review and approval. Include the requesting resources' email on the form so the Resource Order can be emailed to the Requesting Resource.
- The SPUL will issue \$#'s pending receipt and verification of proper documentation for cache items.

### NON-CACHE Items – This is the Important Part!!!

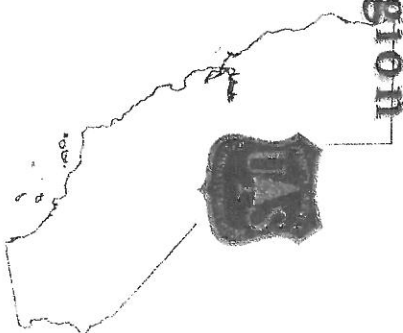
**Non-Cache items include any item not available through the National Cache System.**

Lost, damage, or destroyed government non-cache property shall be reported to the appropriate DIVS or higher-level overhead within 24 hours of occurrence. Stolen property shall be reported to the Security Manager. The requesting resource shall complete a 213 and OF-289, Property Loss and Damage Report – Fire Suppression, and include the following:

- All witnesses shall document the facts and circumstances of the loss or damage on the OF-289. Use additional paper if needed. Explanations shall be detailed and thorough.
- The requesting resource will take the 213 and OF-289 to the Comp/Claims Unit Leader (COMP) for review. The COMP will make a determination based up on the documentation presented and other information provided by the requesting resource.
- Approval for replacement is the responsibility of the incident agency and may be delegated to the Incident Management Team.
- If the replacement request is approved, the replacement cost will be limited to cache equivalent value. This value will be reflected on the Resource Order.
- Items that do not have a like-item in the cache will be reviewed and approved at the discretion of the FSC or Incident Business Advisor, as delegated by the Agency Administrator.



# USDA Forest Service Pacific Southwest Region



## Outreach Notice Modoc National Forest

### 2017 Fall Centralized Fire Hire Numerous Fire Positions

The Modoc National Forest will soon be filling Numerous Fire Positions (listed in the table below), with duty locations of Alturas, Adin, Canby, Cedarville and Tulelake, California. This notification is being circulated to inform prospective and interested applicants of this upcoming opportunity. Please see the following information on the positions and the Modoc National Forest.

Announcements for these positions will open on August 11, 2017

To apply for any of these positions:

- 1) Go to USAJOBS (must set up and have a USAJOBS profile) <https://www.usajobs.gov/>
  - a. Search/locate the announcement number;
  - b. Select position(s) and location(s) you are interested in and begin the application process.
- 2) Complete and submit your application prior to 8:59 Pacific Time or 11:59 p.m. Eastern Time August 25, 2017 at 20:59 Pacific Standard Time
- 3) All announcements flown under Merit authority will also be advertised using the Land Management Workforce Flexibility Act (LMWFA) for eligible applicants. So along with Forest Service-wide applicants already in career or career-conditional appointments, temporary employees who meet the LMWFA eligibility requirements may also apply to the merit announcement. Additional information and requirements on LMWFA can be found by going to the HRM LMWFA website at <http://fsweb.asc.fs.fed.us/HRM/employment/LMWFA.php>

Candidates are encouraged to read the announcement thoroughly to ensure you are applying to the correct announcement, as some position titles appear similar. Applicants will need to attach any required supporting documents (IQCS Master Record, DD-214, etc.)

The following positions are the known vacancies:

Position	REGIONAL GROUP ANNOUNCEMENT NUMBERS G will be for Merit & DP will be for Demo positions.	Duty Location
Engineering Equipment Operator/Fire Dozer	17-FIREFALL-EQOPTR-10G & DP	Adin
Forestry Technician Fire Engine Operator (FEO) GS-0462-07	17-FIREFALL-FEO(H)-7G	Alturas
Lead Forestry Technician Assistant Fire Engine Operator (AFEO)	17-FIREFALL-AFEO-6G & DP	Alturas
Supervisory Forestry Technician/Asst Superintendent	17-FIREFALL-IHCASST-78G	Canby
Firsty Aid GS-03, Forestry Techncn GS-4/5	17-FIREFALL-WFAP-5G & 17-FIREFALL-WFAP-345DP	Adin, Alturas, Canby, Cedarville, Tulelake

Candidates are encouraged to apply to any position/location on the Forest, whether a vacancy exists or not. Positions that become vacant during this process may also be filled immediately through a "back filling" process.

**Modoc July Complex  
3 Day Tentative DMOB**

**\*\*\*PLEASE ARRIVE TO DMOB AT SCHEDULED TIME\*\*\***

**\*\*\*REMINDER ALL AIR TRAVEL GIVE DMOB 48 HOUR NOTICE\*\*\***

REQ #	RESOURCE NAME	KIND	DEMOP DATE	TENTATIVE RELEASE TIME
-------	---------------	------	------------	------------------------

8/8/2017				
C-46	CRW1 EL CARISO IHC	HC1	08/08/2017	6:00
C-1	CRW 21A MESCALERO	HC2I	08/08/2017	6:00
C-4	CRW1 BECKWOURTH IHC	HC1	08/08/2017	6:00
C-6	CRW CAMP NAPA 5	CC	08/08/2017	6:00
C-28	CRW 21A KLAMATH 14	HC2I	08/08/2017	6:00
E-8	DOZZ BOB W BUSHEY 4	DOZZ	08/08/2017	6:30
E-11	ENG3 MNF 364	ENG3	08/08/2017	6:30
O-93	WHITNEY, BRANDON	FEMP	08/08/2017	6:30
E-62	WTS2 - NORTHSTATE	WTS2	08/08/2017	6:30
E-178	TRUCK - SERVICE	MEC	08/08/2017	7:00
E-107	ENG6 I.A.R. 9	ENG6	08/08/2017	7:00
E-255	ENG3 S/T 2350C	ES3	08/08/2017	7:00
O-16	MORTIER, JOEL T	TFLD	08/08/2017	7:00
E-334	ENG3 S/T T3 4813C	ES3	08/08/2017	7:30
E-258	ENG3 S/T 2142C	ES3	08/08/2017	7:30
O-65	FLEISHMAN, RICHARD K	PIO2	08/08/2017	7:30
E-77	STAKESIDE	STK	08/08/2017	8:00
E-240	TOM DAVIS	SKG	08/08/2017	8:00
O-323	WALKER, STEVE	OPBD	08/08/2017	8:00
O-325	MASON, DONALD	READ	08/08/2017	8:00
E-258	2142C	ES3	08/08/2017	8:00
E-334	4813C	ES3	08/08/2017	8:30
E-240	SKG2	SKG2	08/08/2017	11:00
E-38	KLEIN EQUIPMENT	MEC	08/08/2017	12:00
O-47	FRANK, CHARLES L	SOF2	08/08/2017	15:00
O-143	MORLOCK, JOHN	SOFR	08/08/2017	16:00
O-49	VINSON, RANDAL C	SOFR	08/08/2017	16:00
E-254	ENG3 S/T 3150C	ES3	08/08/2017	17:00
E-310	ENG3 S/T OES 3800C	ES3	08/08/2017	17:00

8/9/2017				
E-61	WTS2 LEVENTON	WTS2	08/09/2017	6:00
O-29	BERRY, CARLA	RADO	08/09/2017	6:00
E-12	ENG3 TMU 43	ENG3	08/09/2017	6:00
E-205	ENG6 WOOD'S	ENG6	08/09/2017	6:00
C-2	CRW CAMP CHICO 26	CC	08/09/2017	6:30
C-5	CRW CAMP CHICO 28	CC	08/09/2017	6:30
C-33	CRW 2 DUST BUSTERS	HC2	08/09/2017	6:30
E-2	NORTHSTATE HEAVY	POT2	08/09/2017	6:30
C-34	CRW2 DUST BUSTERS	HC2	08/09/2017	6:30
E-10	ENG3 MNF 352	ENG3	08/09/2017	7:00
E-60	WTS2 O ACKLEY	WTS2	08/09/2017	7:00
E-159	ENG3 ANF 31	ENG3	08/09/2017	7:00
E-160	ENG3 ANF 21	ENG3	08/09/2017	7:30
E-162	ENG3 ANF 339	ENG3	08/09/2017	7:30

**Modoc July Complex  
3 Day Tentative DMOB**

**\*\*\*PLEASE ARRIVE TO DMOB AT SCHEDULED TIME\*\*\*  
\*\*\*REMINDER ALL AIR TRAVEL GIVE DMOB 48 HOUR NOTICE\*\*\***

REQ #	RESOURCE NAME	KIND	DMOB DATE	TENTATIVE RELEASE TIME
-------	---------------	------	-----------	------------------------

8/9/2017				
E-163	ENG3 SWR 8430	ENG3	08/09/2017	8:00
E-170	DOZ2 DIAMOND BRITTEN	DOZ2	08/09/2017	8:00
E-171	ENG3 ANF 16	ENG3	08/09/2017	8:00
E-206	ENG6 HEATSEEKER 13	ENG6	08/09/2017	8:30
E-259	ENG3 S/T 6210C	ES3	08/09/2017	8:30
O-8	TURNER, JACK C	HEQB	08/09/2017	9:00
O-30	GREEN HALL, MARIE	RADO	08/09/2017	9:00
O-31	ANDREWS, MATTHEW	RADO	08/09/2017	9:30
O-36	STONE, RICHARD	COMT	08/09/2017	9:30
O-43	HOBBS, BRIAN	SEC2	08/09/2017	9:30
O-53	ERICKSON, BOB	FEMP	08/09/2017	10:00
O-54	MICKELSON, CHRIS	FEMP	08/09/2017	10:00
O-55	HAAS, MARK	FEMP	08/09/2017	10:30
O-56	MURRAY, MARK CRAIG	FEMT	08/09/2017	10:30
O-58	GREEN, RANDOLPH J	FEMT	08/09/2017	10:30
O-59	SASSEN, TYLER	FEMT	08/09/2017	11:00
O-60	FRY, SHAWN	AREP	08/09/2017	11:00
O-74	SHAW, CHAD	EQPM	08/09/2017	11:00
O-90	CROSSLEY, IAN MICHAEL	FEMP	08/09/2017	11:30
O-120	FRANCO, REBECA J	PIO2	08/09/2017	11:30
O-121	BURNS, STEVE O	OSC2	08/09/2017	11:30
C-10	CRW21A FIRESTORM 17	HC21	08/09/2017	12:00
E-84	ENG6 MOORETOWN E-	ENG6	08/09/2017	12:00
O-249	MATHESON, CLAY	DIVS	08/09/2017	12:00
E-85	ENG6 MOORETOWN E-	ENG6	08/09/2017	12:00
E-1	NORTHSTATE HEAVY	GW22	08/09/2017	12:00
O-259	WOLLEBAEK, LANCE	TFLD	08/09/2017	12:00
E-66	MOUNTAIN MEDICS INC	AMBU	08/09/2017	12:30
E-72	STEWART BROS LAND	TRLR	08/09/2017	12:30
O-269.43	SANDOVAL JR, RICHARD	RCDM	08/09/2017	12:30
O-301	GLENN, DON H	HMGB	08/09/2017	12:30
O-303	WEARNE, WALKER	RCDM	08/09/2017	12:30
O-458	CLOWAR, CHRISTOPHER	HECM	08/09/2017	13:00
O-123	BROGAN, ERIN	PIOF	08/09/2017	16:00

**8/10/2017**

E-74	PICKUP - T1 - DIETZ	PU	08/10/2017	6:00
C-47	CRW1 LITTLE TUJUNGA	HC1	08/10/2017	6:00
E-88	ENG6 VOLCANO CREEK	ENG6	08/10/2017	6:00
E-98	DOZ2 STEWART	DOZ2	08/10/2017	6:30
E-157	ENG3 S/T 5780C	ES3	08/10/2017	6:30
E-161	ENG3 ANF 311	ENG3	08/10/2017	6:30
E-177	WTS2 LIKELY VFD 4430	WTS2	08/10/2017	7:00
E-203	ENG6 PAA 814	ENG6	08/10/2017	7:00



**Modoc July Complex  
3 Day Tentative DMOB**

**\*\*\*PLEASE ARRIVE TO DMOB AT SCHEDULED TIME\*\*\***

**\*\*\*REMINDER ALL AIR TRAVEL GIVE DMOB 48 HOUR NOTICE\*\*\***

REQ #	RESOURCE NAME	KIND	DEMOS DATE	TENTATIVE RELEASE TIME
-------	---------------	------	------------	------------------------

**8/10/2017**

E-204	ENG6 OVD 3141	ENG6	08/10/2017	7:00
O-14	CASTANEDA, ERICK V	HEQB	08/10/2017	7:30
O-15	GIDDINGS, GAEB	HEQB	08/10/2017	7:30
O-17	NASH, JUSTIN	TFLD	08/10/2017	7:30
O-25	HELZNER, RONNEE SUE	SCKN	08/10/2017	8:00
O-32	WEARNE, WALKER J	ORDM	08/10/2017	8:00
O-37	HARKLEROAD, JOHN	BCMG	08/10/2017	8:00
O-40	HITT, WILLIAM E	EQPM	08/10/2017	8:30
O-44	GARCIA, GUILLERMINA	SEC2	08/10/2017	8:30
O-46	WALTER, JAY T	SOF2	08/10/2017	8:30
O-57	FARRER, JOBEE	FEMT	08/10/2017	9:00
O-61	HALL, PETER	REAF	08/10/2017	9:00
O-62	NOLES, GARRETT R	READ	08/10/2017	9:00
O-73	GREEN, CLINT	DIVS	08/10/2017	9:00
O-77	WALBRUN, RYAN	IMET	08/10/2017	9:30
O-81	BENNINGTON, AARON	FOBS	08/10/2017	9:30
O-82	SIMMONS, FRANK	FOBS	08/10/2017	9:30
O-83	CRAWFORD, JEFFREY N	FOBS	08/10/2017	10:00
O-93	WHITNEY, BRANDON	FEMP	08/10/2017	10:00
O-122	SOLDAVINI, DAVID C	DIVS	08/10/2017	10:00
O-129	ANELLO, MEREDITH LYNN	PIOF	08/10/2017	10:30
O-216	LEE, AMY	INBA	08/10/2017	10:30
O-261	PORTER, JASON	TFLD	08/10/2017	10:30
O-314	RODRIGUEZ, AGUSTIN	TFLD	08/10/2017	11:00
O-194	MCDUGAL, LEIGH A	ORDM	08/10/2017	12:00





