

INCIDENT ACTION PLAN

MODOC JULY COMPLEX

CA-MDF-000671 P5K7YC (0509)



DAY SHIFT OPERATIONAL PERIOD

MONDAY
AUGUST 7, 2017
0600-1800 HOURS

MAPS



INCIDENT OBJECTIVES (ICS 202)

1. Incident Name:	2. Operational Period: DAY	
MODOC JULY COMPLEX	Date/Time From: 08/07/2017 0600 MON	Date/Time To: 08/07/2017 1800 MON
3. Objective(s):		
<ul style="list-style-type: none"> • Provide for the safety of all responders by utilizing national Risk Management Standards and the implementation of appropriate mitigations. • Share critical information affecting public safety so timely decisions and actions can be implemented. • Reduce firefighter exposure by only engaging fire assignments with the highest probability of success. • Provide initial attack response within the area identified by the Delegation of Authority. • Engage cooperators and stakeholders to jointly provide for the defense of communities, infrastructure and economic interests. • Utilize local resource specialists to identify & protect sensitive sites and cultural resource values by minimizing impacts from suppression operations. • Maintain and enhance Community, County, State, National Forest and Stakeholder relationships through accurate and timely dissemination of information. • Identify, assess and implement suppression repair needs, where appropriate in coordination with the Resource Advisor following agency policy. • Manage incident costs effectively for the values at risk through regular and ongoing cost analysis. 		
4. Operational Period Command Emphasis:		
<u>Primary:</u> Using a full suppression strategy, minimize the size of the fires through the use of direct attack where safe to do so.		
<u>Alternate:</u> When not feasible or safe to go direct use indirect attack to minimize fire size.		
<u>Contingency:</u> Use indirect attack tactics at major roads and natural barriers to suppress fire & minimize firefighter exposure to extreme fire behavior.		
<u>Emergency:</u> Withdraw fire personnel to safety zones or ICP, ensure accountability for all personnel & reevaluate how to safely advance to suppress the fire.		
General Situational Awareness:		
<ul style="list-style-type: none"> • Red Flag Warning. • Heads up for possible dry lightning and increased fire behavior. • Monitor cumulus activity due to the chance of erratic winds and down drafts. • Keep your situational awareness current. 		
5. Site Safety Plan Required? Yes <input type="checkbox"/> No <input checked="" type="checkbox"/>		
Approved Site Safety Plan(s) Located at:		
6. Incident Action Plan (the items checked below are included in this Incident Action Plan):		
<input checked="" type="checkbox"/> ICS 202 <input checked="" type="checkbox"/> ICS 203 <input checked="" type="checkbox"/> ICS 204 <input checked="" type="checkbox"/> ICS 205 <input type="checkbox"/> ICS 205A <input checked="" type="checkbox"/> ICS 206	<input type="checkbox"/> ICS 207 <input type="checkbox"/> ICS 208 <input type="checkbox"/> ICS 220 <input checked="" type="checkbox"/> Map/Chart <input checked="" type="checkbox"/> Weather Forecast/Tides/Currents	Other Attachments: <input checked="" type="checkbox"/> DEMOB LIST <input checked="" type="checkbox"/> SUPPRESSION REPAIR GUIDE <input checked="" type="checkbox"/> SAFETY MESSAGE <input checked="" type="checkbox"/> TRAINING SPECIALIST MESSAGE
7. Prepared by: DAVE GERBOTH Position/Title: PSC1	Signature:	
8. Approved by Incident Commander:	Name: JAY KURTH	Signature:
ICS 202	IAP Page	Date/Time: 08/06/2017 2200

ORGANIZATION ASSIGNMENT LIST		Demob Unit	Wayne Barney / Joe Scuri (T)
1. Incident Name Modoc July Complex		Training Specialist	Tom Reaves
2. Date Prepared 08/06/2017		3. Time 2200	READ Peter Hall
4. Operational Period 08/07/17 0600-1800		8. Logistics Section	
Position	Name	Chief	Ross Peckinpah / Cheryl Raines
5. Incident Commander and Staff		Comm Unit	Sai Bonilla / Nicholas Luby
IC	Jay Kurth / Marty Adell (T)	Medical Unit	E. Williams / D. Stuart / J. Brooks (T) / C. Schilling (T)
Deputy IC	Rocky W. Opliger	Food Unit	Mike Kinne / Kenneth Breskin / Sue Zahn (T)
Safety Officer	John Kraushaar / Dave Welch	Facilities Unit	Robert Griffith
Information Officer	Sean Collins / Frank Mosbacher / Celeste Prescott (T)	Supply Unit	Teresa Stelman
Human Resources	Dana Simpson / John Bohmer (T)	Security Manager	Luke Johnson
Liaison	Sam Wilbanks / Steve Anderson (T) / Rob Griffith (T)	Ground Support	Ron Brewer / Jeff Burch
6. Agency Representatives		9. Operations Section	
Agency	Name	Chief North Zone	Brian Rhodes
MDF Agency Administrator	Deedee Harrison	Chief South Zone	Pat Titus
MDF Agency Administrator Rep.	Chris Christopherson	Planning OPS	Jake Cagle / Ken Gregor (T)
CALFIRE Agency Administrator LMU	Don Gordon	a. Branch I (North Zone)	
CALFIRE Agency Administrator Rep.	Mike Smith	Branch Director	Mike Good
Oregon Dept. Forestry	Ron Zilli	Division A / C / E	Pete Davis / Bill Schlaich (T)
Lava Beds NM	Larry Whalon	Division O	Bill Bryant
U.S. Fish and Wildlife	Ken Griggs / Greg Austin	b. Branch II (North Zone)	
California Highway Patrol	Danny Koetsier	Branch Director	Mike Tucker / Belinda Plummer (T)
Tribal Representative	Ken Sandusky	Division G	Nick Bunch / Mitch Silvester (T)
Fremont- Winema NF / Lakeview District BLM	Barry Shullanberger	Division I	Mark Mott / Daniel Ostmann (T)
Modoc County OES	A.J. McQuirrie	Division K / M	Brandon Woodward / Deborah Flowers (T)
Modoc County Sheriff	Mike Poindexter / William "Tex" Dowdy	North Road Group	Bill Hitt
Northern CA Fire Cooperative Assoc.	Dorin Quigley	c. Branch V (South Zone)	
California Conservation Corps	Shawn Fry	Branch Director	Dave Pereira
BNSF Railroad	Joe Aho	PP	Clay Matheson / Don Shoemaker (T)
PG&E	Mike Weaver	RR / TT	Erik Johnson / Ted King (T)
Collins Pine	Lee Fledderjohann	UU	Kelly Cornwall
7. Planning Section		South Road Group	Kirby Hennings
Chief	Dave Gerboth / Ann Marx (T)	d. IA Branch	
Deputy Chief	Mitch Diehl	Branch Director	Steve Murphy / James Burton (T)
Resources Unit	G. Bald / J. Camacho (T) / J. Ramirez(T) / B. Lavelle(T) / S. Arjonilla(T)	North IA	C. Orr / M. Wallace / R. DeCamp (T) / J. Getman (T)
Situation Unit	Michael Hoose / Damian Guilliani Jennifer Erickson (T) / Aaron Grove (T)	South IA	M. Crites / S. Craig / B. Boltshauer (T) / J. Osteen (T)
FBAN	Brendan Ripley / Diondray Wiley (T)	e. Suppression Repair Branch	
IMET	Ryan Walbrun / Jimmy Taeger (T)	Branch Director	Brett Waters
Incident Technology Support Specialist	James Whiteside / Mike Laxo (T)	Suppression Repair	Harold Kibbe
GISS	C. Clervi / C. Barrett / M. Eister	f. Staging	
Document Unit	LaNette Estes (T)	Staging	Robin Ace
		g. Air Operations Branch	
		Air OPS Branch Director	Kevin Murray / Ty Miller
		Air Tactical Supervisor	Gary Monday
		Air Support Supervisor	James Stratton
		Helibase Manager	Brad Nelson
		10. Finance Section	
		Finance Section Chief	Judy Reynolds
		Time Unit	Loni Holt / Sheila Miner
		Procurement Unit	Donald Tinsley
		Cost	Vicki Wilson
		Comps / Claims Unit	Scott Parsons / Mandi Heitman
		Prepared By: Gina Bald, RESL	



Modoc July Complex Fire Weather Forecast



FORECAST NO: 22

NAME OF FIRE: Modoc July Complex

PREDICTION FOR: 0600-1800 Day shift

UNIT: CA-MDF

SHIFT DATE: 8/7/17

SIGNED:

TIME AND DATE

Incident Meteorologist Trainee: Jimmy Taeger

FORECAST ISSUED: 2200 hours on 8/6

...Red Flag Warning Monday for Abundant Lightning...

WEATHER DISCUSSION: Scattered thunderstorms are expected again Monday afternoon and evening, with wetting rains expected. The possibility of abundant lightning has prompted another Red Flag Warning for Monday afternoon and evening. Expect warm weather and low afternoon relative humidity away from storms, with lower temperatures and higher humidity near storms Monday afternoon. Isolated thunderstorms are possible in the afternoons and evenings for the rest of the week.

*****Thunderstorms imply the possibility of gusty and erratic winds*****

WEATHER FORECAST FOR TODAY:

WEATHER: Partly cloudy in the morning, becoming mostly cloudy in the afternoon. 50% chance of thunderstorms in the afternoon and evening, with storms first developing around 1200.

HIGH TEMPERATURES: 75-85. Little change.

HUMIDITY: 15-20% away from storms. 35-45% near storms. Little change.

20 FT WINDS:

Steele Fire – Light winds early, becoming Southwest 4-8 mph with gusts to 12 mph in the afternoon. Strongest winds likely in Branch II Div I/K.

Cove Fire - Light winds becoming West 4-6 mph, with gusts to 10 mph in the afternoon.

SLOPE/VALLEY – Light, then upslope 2-5 mph with gusts to 8 mph in the afternoon and evening.

HAINES INDEX: 3

LAL: 4

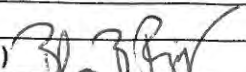
STABILITY/INVERSION: Moderate morning inversion becoming unstable after 1200.

MONDAY NIGHT: Thunderstorms will dissipate by 2200, and then skies become partly cloudy overnight. RH recovery will be 40-60% away from storms, and 70-90% near storms. Lows 54-61. Westerly winds 4-8 mph in the evening, becoming light and downslope after midnight.

TUESDAY THROUGH THURSDAY: Thunderstorm chances decrease Tuesday through Thursday. Isolated thunderstorms possible in the afternoons and evenings. Seasonably warm through the period, with highs in the mid to upper 80s and moderate overnight humidity recovery around 60%. Southwesterly winds through the period, with gusts around 12 mph in the afternoons and evenings.

SAFETY INFORMATION: Keep an ear to the radio for weather updates, and seek shelter from lightning if a storm approaches. If you feel the hair on your arms or head "stand up," there is a high probability of a strike in the vicinity. Crouch or sit on a pack with your legs together. Take shelter in vehicles if possible.

FIRE BEHAVIOR FORECAST

FORECAST NUMBER: 024	TYPE OF FIRE: Wildfire Full Suppression
FIRE NAME: Modoc July Complex	OPERATIONAL PERIOD: Day Shift Monday 8/07/2017
DATE ISSUED: 08/06/2017	TIME ISSUED: 2100
UNIT: CA-MDF-000671 P5K7YC	SIGNED: Brendan "Rip" Ripley (FBAN) 

INPUTS

WEATHER SUMMARY: "RED FLAG WARNING TODAY FOR ABUNDANT LIGHTNING"

***** WIND SCHEDULE *****

Steele Fire: 0600 Light winds..... 1300 – 1800 SW 4-8mph G12 Strongest DIV-I/K

Cove Fire: 0600 Light winds..... 1300 – 1800 W 4-6mph G10

Slope/Valley: 0600 Light winds..... 0900 – 1800 Upslope 2-5mph G8

Note: Outflow winds (30 mph possible) from passing thunder cells could come from any direction at any time cells are present.

(See attached weather forecast for specific weather information)

OUTPUTS

FIRE BEHAVIOR

GENERAL: Rainfall over many portions of the fire will help to limit fire behavior in some areas. Moisture of extinction for fine dead fuels (grass) is 12% and for 10hr fuels 20-25%. Though many areas exceeded the 12% for fine dead fuels other areas did not and remain a point of escape. Moisture of extinction for the 10hr fuels was not met and should be considered receptive to ignition. Sunny conditions will promote drying and increase the fire behavior potential. Cloud cover will help to mitigate fire behavior. Remember wind can override conditions and promote active fire behavior.

LOCAL THRESHOLDS – WATCH OUT

Combinations of any of these factors can greatly increase fire behavior:

Thresholds: **20' winds** over 5 mph **RH** less than 20% **Temp** over 90° **ERC** over 64 **BI** over 51

Forecasted: **20' winds**, 2-12mph **RH** 15-45% **Temp** 75-85° **ERC** 68-75 **BI** 40-67

Probability of Ignition: Near Storms - 30-40%..Shaded 40-60% Un-shaded

Away from storms – 50-60%.. Shaded 70-90% Un-shaded

SPECIFIC:

North Zone & Steele Fire: The Steele fire received very little precipitation yesterday. 10hr fuels remain critically dry along the northern boundary (DIV-G/I). With the return of the southwest winds the greatest area of vulnerability will be along this Northern edge of the fire. The southwest winds are new to the fire and may promote fire activity that may have remained dormant under previous wind directions.

South Zone & Cove Fire: The Cove fire received about a half an inch of rain yesterday. 1hr fuels should be well within the moisture of extinction at the beginning of the operational period. Drying will be dependent upon warm, dry, sunny conditions. Remember, all it takes is 1hr for fuels to dry. 10hr fuels will still burn, but fire behavior will be mitigated by the moisture received.

IA "Gasoline Alley": The area known as "Gasoline Alley" received about a half an inch of rain yesterday along with the most lightning strikes. 1hr fuels should be well within the moisture of extinction at the beginning of the operational period. Drying will be dependent upon warm, dry, sunny conditions. Remember, all it takes is 1hr for fuels to dry. 10hr fuels will still burn, but fire behavior will be mitigated by the moisture received yesterday. Remember the reason that this area is called Gasoline Alley is due to the very dry fuel conditions associated with poor soil moisture. Do not underestimate the fire behavior associated with the timber, brush and grass fuel models in this area.

AIR OPERATIONS: VFR conditions are expected throughout the operational period.

THUNDERSTORM SAFETY

Observe the 30/30 rule: If you see lightning and hear the thunderclaps follow in less than 30 seconds, take the storm precautions identified on Page 21 of the IRPG. Do not resume work in exposed areas until 30 minutes after storm activity has passed.

NORTH ZONE

Division/Group Assignment List (ICS 204 WF)

1. Incident Name:			3.			
MODOC JULY COMPLEX			Branch:		Division/Group:	
2. Operational Period: DAY			I NORTH		A / C / E	
Date/Time From: 08/07/2017 0600 MON		Date/Time To: 08/07/2017 1800 MON				
4. Operations Personnel						
OPERATIONS CHIEF		BRIAN RHODES		DIVISION/GROUP SUPERVISOR		
				PETE DAVIS BILL SCHLAICH (T)		
BRANCH DIRECTOR		MIKE GOOD		AIR TACTICAL GROUP SUPERVISOR		
				GARY MONDAY		
5. Resources Assigned this Period						
Strike Team / Task Force / Resource Designator		LWD	Leader	Number Persons	Drop Off PT./Time	Pick Up PT./Time
ENG6 FIRESTORM E-86		08/16	TOBY BEHR	3	ICP/0600	ICP/1800
ENG6 CDD 3648 E-202		08/10	MIKE HOON	3	ICP/0600	ICP/1800
WTS2 TURNEREX E-268		08/20	DENNIS HURL	1	ICP/0600	ICP/1800
FEMP O-54		08/08	CHRIS MICKELSON	1	ICP/0600	ICP/1800
FEMT O-59		08/08	TYLER SASSEN	1	ICP/0600	ICP/1800
READ (T) O-330		08/13	TRAVIS S KIRKLAND	1	ICP/0600	ICP/1800
6. Control Operations/Work Assignments:						
<ul style="list-style-type: none"> Utilize appropriate suppression actions to keep fire within current containment lines. Coordinate with Suppression Repair Branch. 						
7. Special Instructions:						
<ul style="list-style-type: none"> Track water usage and turn into Finance. Provide location of accountable property and dozer lines and turn into Situation Unit. Back haul trash. Follow traffic plan: On coming shift resources take 46 Road. Off shift resources take 139 Road. Any suppression repair must be cleared through the Suppression Repair Branch. CHECK COMM PLAN. SELECT APPROPRIATE COMMAND CHANNEL BASED ON FIRE LOCATION. 						
8. Division/Group Communication Summary						
Function	Channel	RX Frequency N/W	RX Tone/NAC	TX Frequency N/W	TX Tone/NAC	Mode
COMMAND	3	168.7000 N	0.0	170.9750 N	110.9	A
TACTICAL	6	168.0500 N	110.9	168.0500 N	110.9	A
AIR TO GROUND CMD	13	169.0875 N	0.0	169.0875 N	0.0	A
AIR TO GROUND TAC	14	165.0000 N	0.0	165.0000 N	0.0	A
9. Prepared By (Resource Unit Leader)			Approved By (Planning Section Chief)		Date	Time
JIM RAMIREZ (T)			DAVE GERBOTH		08/06/2017	2300

Division/Group Assignment List (ICS 204 WF)

1. Incident Name:			3.			
MODOC JULY COMPLEX			Branch: I NORTH		Division/Group: O	
2. Operational Period: DAY						
Date/Time From: 08/07/2017 0600 MON		Date/Time To: 08/07/2017 1800 MON				
4. Operations Personnel						
OPERATIONS CHIEF		BRIAN RHODES		BRANCH DIRECTOR		MIKE GOOD
DIVISION/GROUP SUPERVISOR		BILL BRYANT		AIR TACTICAL GROUP SUPERVISOR		GARY MONDAY
5. Resources Assigned this Period						
Strike Team / Task Force / Resource Designator		LWD	Leader	Number Persons	Drop Off PT./Time	Pick Up PT./Time
ENG3 TNF 17 E-169		08/10	JOSHUA RICHARDSON	5	ICP/0600	ICP/1800
ENG6 FIRESTORM #9905 E-87		08/15	SAM PEARCE	3	ICP/0600	ICP/1800
ENG6 PACIFIC OASIS 25 E-108		08/17	SIDNEY KENNEDY	3	ICP/0600	ICP/1800
WTS2 LEVENTON MULE DEER E-61		08/07	SCOTT LEVENTON	1	ICP/0600	ICP/1800
TFLD O-16		08/09	JOEL T MORTIER	1	ICP/0600	ICP/1800
FEMP O-463		08/15	ERIC SCHROTH	1	ICP/0600	ICP/1800
FEMT O-56		08/08	MARK MURRAY	1	ICP/0600	ICP/1800
SOFR O-146		08/11	CHARLES L WHITE	1	ICP/0600	ICP/1800
6. Control Operations/Work Assignments:						
<ul style="list-style-type: none"> • Utilize appropriate suppression actions to keep fire within current containment lines. 						
7. Special Instructions:						
<ul style="list-style-type: none"> • Track water usage and turn into Finance. • Provide location of accountable property and dozer lines and turn into Situation Unit. • Back haul trash. • Follow traffic plan: On coming shift resources take 46 road. Off shift resources take 139 road. • Any suppression repair must be cleared through the Suppression Repair Branch. • CHECK COMM PLAN. • SELECT APPROPRIATE COMMAND CHANNEL BASED ON FIRE LOCATION. 						
8. Division/Group Communication Summary						
Function	Channel	RX Frequency N/W	RX Tone/NAC	TX Frequency N/W	TX Tone/NAC	Mode
COMMAND	3	168.7000N	0.0	170.9750 N	110.9	A
TACTICAL	8	166.7250 N	110.9	166.7250 N	110.9	A
AIR TO GROUND CMD	13	169.0875 N	0.0	169.0875 N	0.0	A
AIR TO GROUND TAC	14	165.0000 N	0.0	165.0000 N	0.0	A
9. Prepared By (Resource Unit Leader)			Approved By (Planning Section Chief)		Date	Time
JIM RAMIREZ (T)			DAVE GERBOTH		08/06/2017	2300

Division/Group Assignment List (ICS 204 WF)

1. Incident Name:			3.			
MODOC JULY COMPLEX			Branch: II NORTH		Division/Group: G	
2. Operational Period: DAY						
Date/Time From: 08/07/2017 0600 MON		Date/Time To: 08/07/2017 1800 MON				
4. Operations Personnel						
OPERATIONS CHIEF		BRIAN RHODES		DIVISION/GROUP SUPERVISOR		NICK BUNCH MITCH SILVESTER (T)
BRANCH DIRECTOR		MIKE TUCKER / BELINDA PLUMMER(T)		AIR TACTICAL GROUP SUPERVISOR		GARY MONDAY
5. Resources Assigned this Period						
Strike Team / Task Force / Resource Designator		LWD	Leader	Number Persons	Drop Off PT./Time	Pick Up PT./Time
CRW1 LITTLE TUJUNGA IHC C-47		08/09	OSCAR VARGAS	20	ICP/0600	ICP/1800
CRW2 CSR ENTERPRISES C-100		08/17	ROGER LEMIEUX	20	ICP/0600	ICP/1800
CRW2IA BLACK EAGLES 3 C-25		08/09	JOSEPH ROZNOVAK	22	ICP/0600	ICP/1800
CRW 2IA MESCALERO C-1		08/07	TERRENCE ROBINSON	20	ICP/0600	ICP/1800
ENG3 FIRESTORM 9908 E-81		08/13	JAMES AURENTZ	3	ICP/0600	ICP/1800
ENG6 FIRESTORM 9912 E-83		08/17	GRAHAM LOWE	3	ICP/0600	ICP/1800
ENG6 FIRESTORM 9904 E-109		08/18	JOSHUA BADLEY	3	ICP/0600	ICP/1800
ENG6 INBOUND 4 E-141		08/13	ADHAM ROWLEY	3	ICP/0600	ICP/1800
ENG6 VOLCANO CREEK E-88		08/09	TIIM AYLES	3	ICP/0600	ICP/1800
WTS2 WILLMORE AG E-260		08/14	KEN GRIPPIN	1	ICP/0600	ICP/1800
TFLD O-187		08/11	KARL FOWLER	1	ICP/0600	ICP/1800
FOBS O-317		08/14	JERE MILLER	1	ICP/0600	ICP/1800
FOBS (T) O-388		08/15	DOUG LINGEN	1	ICP/0600	ICP/1800
FEMP O-286		08/13	SEAN CAVAVAUGH	1	ICP/0600	ICP/1800
FEMP O-285		08/13	ROUCAL REOH	1	ICP/0600	ICP/1800
FEMP O-53		08/08	BOB ERICKSON	1	ICP/0600	ICP/1800
FEMP O-93		08/09	BRANDON WHITNEY	1	ICP/0600	ICP/1800
SOFR O-221		08/11	CHRISTINE THOMPSON	1	ICP/0600	ICP/1800
8. Division/Group Communication Summary						
Function	Channel	RX Frequency N/W	RX Tone/NAC	TX Frequency N/W	TX Tone/NAC	Mode
COMMAND	3	168.7000N	0.0	170.9750 N	110.9	A
TACTICAL	9	166.7750 N	110.9	166.7750 N	110.9	A
AIR TO GROUND CMD	13	169.0875 N	0.0	169.0875 N	0.0	A
AIR TO GROUND TAC	14	165.0000 N	0.0	165.0000 N	0.0	A
9. Prepared By (Resource Unit Leader)			Approved By (Planning Section Chief)		Date	Time
JIMRAMIREZ (T)			DAVE GERBOTH		08/06/2017	2300

Division/Group Assignment List (ICS 204 WF)

1. Incident Name:			3.			
MODOC JULY COMPLEX			Branch:		Division/Group:	
2. Operational Period: DAY			II NORTH		G	
Date/Time From: 08/07/2017 0600 MON		Date/Time To: 08/07/2017 1800 MON				
4. Operations Personnel						
OPERATIONS CHIEF		BRIAN RHODES		DIVISION/GROUP SUPERVISOR		
				NICK BUNCH MITCH SILVESTER (T)		
BRANCH DIRECTOR		MIKE TUCKER / BELINDA PLUMMER(T)		AIR TACTICAL GROUP SUPERVISOR		
				GARY MONDAY		
5. Resources Assigned this Period						
Strike Team / Task Force / Resource Designator		LWD	Leader	Number Persons	Drop Off PT./Time	Pick Up PT./Time
6. Control Operations/Work Assignments:						
<ul style="list-style-type: none"> • Utilize appropriate suppression actions to keep fire within current containment lines. • Continue to patrol the Rimrock Fire. 						
7. Special Instructions:						
<ul style="list-style-type: none"> • Track water usage and turn into Finance. • Provide location of accountable property and dozer lines and turn into Situation Unit. • Back haul trash. • Continue to coordinate with O.D.F. at State line. • Follow traffic plan: On coming shift resources take 46 Road. Off shift resources take 73 Road. • Any suppression repair must be cleared through the Suppression Repair Branch. • CHECK COMM PLAN. • SELECT APPROPRIATE COMMAND CHANNEL BASED ON FIRE LOCATION. 						
8. Division/Group Communication Summary						
Function	Channel	RX Frequency N/W	RX Tone/NAC	TX Frequency N/W	TX Tone/NAC	Mode
COMMAND	3	168.7000N	0.0	170.9750 N	110.9	A
TACTICAL	9	166.7750 N	110.9	166.7750 N	110.9	A
AIR TO GROUND CMD	13	169.0875 N	0.0	169.0875 N	0.0	A
AIR TO GROUND TAC	14	165.0000 N	0.0	165.0000 N	0.0	A
9. Prepared By (Resource Unit Leader)			Approved By (Planning Section Chief)		Date	Time
JIMRAMIREZ (T)			DAVE GERBOTH		08/06/2017	2300

Division/Group Assignment List (ICS 204 WF)

1. Incident Name:			3.			
MODOC JULY COMPLEX			Branch:		Division/Group:	
2. Operational Period: DAY			II NORTH		I	
Date/Time From: 08/07/2017 0600	MON	Date/Time To: 08/07/2017 1800	MON			
4. Operations Personnel						
OPERATIONS CHIEF		BRIAN RHODES		DIVISION/GROUP SUPERVISOR		
				MARK MOTT DAN OSTMANN (T)		
BRANCH DIRECTOR		MIKE TUCKER / BELINDA PLUMMER(T)		AIR TACTICAL GROUP SUPERVISOR		
				GARY MONDAY		
5. Resources Assigned this Period						
Strike Team / Task Force / Resource Designator		LWD	Leader	Number Persons	Drop Off PT./Time	Pick Up PT./Time
CRW1 BRECKENRIDGE IHC C-8		08/09	JAMES DAVID ROBERTSON	20	ICP/0600	ICP/1800
CRW1 FULTON IHC C-13		08/09	JOSH S ACOSTA	20	ICP/0600	ICP/1800
CRW1 BECKWOURTH IHC C-4		08/07	MIKE WINTCH	20	ICP/0600	ICP/1800
CRW 2IA KLAMATH 14 C-28		08/07	ANDREW ZINK	19	ICP/0600	ICP/1800
CRW2 MOSQUEDA C-98		08/17	JOSE MOSQUEDA	20	ICP/0600	ICP/1800
CRW2 CMNI 36 C-106		08/17	BRAD STEWART	21	ICP/0600	ICP/1800
DOZ1 ACKLEY E-197		08/11	ORVIN ACKLEY	2	ICP/0600	ICP/1800
DOZ2 BUSHEY 4 E-8		08/07	BOB BUSHEY	1	ICP/0600	ICP/1800
SKID2 TOM DAVIS E-240		08/16	CHAD OLSON	1	ICP/0600	ICP/1800
WTS2 MCGARR E-290		08/17	RORY CONLAN	1	ICP/0600	ICP/1800
WTS2 NORTHSTATE E-269		08/15	ROY WHEELER	1	ICP/0600	ICP/1800
HEQB O-412		08/15	JAMES S MELLOR	1	ICP/0600	ICP/1800
HEQB O-413		08/15	RYAN W RIDDLE	1	ICP/0600	ICP/1800
HEQB (T) O-414		08/15	BRIAN M TALBOTT	1	ICP/0600	ICP/1800
HEQB (T) O-429		08/18	DANNY NAYLOR	1	ICP/0600	ICP/1800
FOBS O-83		08/09	JEFFREY N CRAWFORD	1	ICP/0600	ICP/1800
FOBS (T) O-371		08/15	JEREMIAH P HANKS	1	ICP/0600	ICP/1800
FEMP O-281		08/13	MATT PETERS	1	ICP/0600	ICP/1800
FEMP O-276		08/13	RYAN VALLELUNGA	1	ICP/0600	ICP/1800
SOFR O-47		08/08	CHARLES L FRANK	1	ICP/0600	ICP/1800
8. Division/Group Communication Summary						
Function	Channel	RX Frequency N/W	RX Tone/NAC	TX Frequency N/W	TX Tone/NAC	Mode
COMMAND	3	168.7000N	0.0	170.9750 N	110.9	A
TACTICAL	8	166.7250 N	110.9	166.7250 N	110.9	A
AIR TO GROUND CMD	13	169.0875 N	0.0	169.0875 N	0.0	A
AIR TO GROUND TAC	14	165.0000 N	0.0	165.0000 N	0.0	A
9. Prepared By (Resource Unit Leader)			Approved By (Planning Section Chief)		Date	Time
JIM RAMIREZ (T)			DAVE GERBOTH		08/06/2017	2300

Division/Group Assignment List (ICS 204 WF)

1. Incident Name:			3.			
MODOC JULY COMPLEX			Branch: II NORTH		Division/Group: I	
2. Operational Period: DAY						
Date/Time From: 08/07/2017 0600 MON		Date/Time To: 08/07/2017 1800 MON				
4. Operations Personnel						
OPERATIONS CHIEF		BRIAN RHODES		DIVISION/GROUP SUPERVISOR		MARK MOTT DAN OSTMANN (T)
BRANCH DIRECTOR		MIKE TUCKER / BELINDA PLUMMER(T)		AIR TACTICAL GROUP SUPERVISOR		GARY MONDAY
5. Resources Assigned this Period						
Strike Team / Task Force / Resource Designator		LWD	Leader	Number Persons	Drop Off PT./Time	Pick Up PT./Time
6. Control Operations/Work Assignments:						
<ul style="list-style-type: none"> • Utilize appropriate suppression actions to keep fire within current containment lines. 						
7. Special Instructions:						
<ul style="list-style-type: none"> • Track water usage and turn into Finance. • Provide location of accountable property and dozer lines and turn into Situation Unit. • Back haul trash. • Continue to coordinate with O.D.F. at state line. • Follow traffic plan: On coming shift resources take 46 road. Off shift resources take 73 road. • Any suppression repair must be cleared through the Suppression Repair Branch. • CHECK COMM PLAN. • SELECT APPROPRIATE COMMAND CHANNEL BASED ON FIRE LOCATION. 						
8. Division/Group Communication Summary						
Function	Channel	RX Frequency N/W	RX Tone/NAC	TX Frequency N/W	TX Tone/NAC	Mode
COMMAND	3	168.7000N	0.0	170.9750 N	110.9	A
TACTICAL	8	166.7250 N	110.9	166.7250 N	110.9	A
AIR TO GROUND CMD	13	169.0875 N	0.0	169.0875 N	0.0	A
AIR TO GROUND TAC	14	165.0000 N	0.0	165.0000 N	0.0	A
9. Prepared By (Resource Unit Leader)			Approved By (Planning Section Chief)		Date	Time
JIM RAMIREZ (T)			DAVE GERBOTH		08/06/2017	2300

Division/Group Assignment List (ICS 204 WF)

1. Incident Name:			3.			
MODOC JULY COMPLEX			Branch:		Division/Group:	
2. Operational Period: DAY			II NORTH		K / M	
Date/Time From: 08/07/2017 0600 MON		Date/Time To: 08/07/2017 1800 MON				
4. Operations Personnel						
OPERATIONS CHIEF		BRIAN RHODES		DIVISION/GROUP SUPERVISOR		BRANDON WOODWARD DEBORAH FLOWERS (T)
BRANCH DIRECTOR		MIKE TUCKER / BELINDA PLUMMER (T)		AIR TACTICAL GROUP SUPERVISOR		GARY MONDAY
5. Resources Assigned this Period						
Strike Team / Task Force / Resource Designator		LWD	Leader	Number Persons	Drop Off PT./Time	Pick Up PT./Time
CRW1 EL CARISO IHC C-46		08/09	CHARLES KOTT	21	ICP/0600	ICP/1800
CRW2IA EAGLE LAKE C-51		08/11	ANTONIO M JIMENEZ	20	ICP/0600	ICP/1800
CRW2 GRAYBACK C-36		08/11	CORNELL HARTFORD	20	ICP/0600	ICP/1800
CRW2 PACIFIC OASIS C-32		08/08	PABLO SERRANO	20	ICP/0600	ICP/1800
CRW2 DUST BUSTERS PLUS C-34		08/08	LEIF LUEBKERT	20	ICP/0600	ICP/1800
CRW 2 DUST BUSTERS PLUS C-33		08/08	CLAYTON BROWNWOOD	20	ICP/0600	ICP/1800
ENG3 GRAYBACK E26 E-138		08/11	CLIFF TEVEBAUGH	3	ICP/0600	ICP/1800
ENG6 I.A.R. 9 E-107		08/06	KEITH GRISHAM	5	ICP/0600	ICP/1800
ENG6 OVD 3141 E-204		08/09	TREVOR S JOHNSON	3	ICP/0600	ICP/1800
ENG6 PAA 814 E-203		08/09	THOMAS STATON	3	ICP/0600	ICP/1800
DOZ2 LPF 3 E-136		08/11	SEAN KENNEY	2	ICP/0600	ICP/1800
DOZ2 ENF 3 E-232		08/13	DANIEL J LANGENDERFER	3	ICP/0600	ICP/1800
WTS2 ALTURAS TIRE E-57		08/08	RUSTY STANFORD	1	ICP/0600	ICP/1800
WTS2 LARRANAGA E-15		08/08	GILBERT MADRIGAL	1	ICP/0600	ICP/1800
WTS2 CROSS TRUCKING E-14		08/08	ROBERT CROSS	1	ICP/0600	ICP/1800
HEQB O-14		08/09	ERICK CASTANEDA	1	ICP/0600	ICP/1800
TFLD O-189		08/12	GREG PELSMA	1	ICP/0600	ICP/1800
TFLD O-117		08/10	STEVEN PJ THIME	1	ICP/0600	ICP/1800
FEMP O-461		08/15	KEITH QUIGLEY	1	ICP/0600	ICP/1800
FEMP O-160		08/11	DEREK SUTTON	1	ICP/0600	ICP/1800
8. Division/Group Communication Summary						
Function	Channel	RX Frequency N/W	RX Tone/NAC	TX Frequency N/W	TX Tone/NAC	Mode
COMMAND	3	168.7000N	0.0	170.9750 N	110.9	A
TACTICAL	10	166.5500 N	0.0	166.5500 N	0.0	A
AIR TO GROUND CMD	13	169.0875 N	0.0	169.0875 N	0.0	A
AIR TO GROUND TAC	14	165.0000 N	0.0	165.0000 N	0.0	A
9. Prepared By (Resource Unit Leader)			Approved By (Planning Section Chief)		Date	Time
SERGIO ARJONILLA (T)			DAVE GERBOTH		08/06/2017	2300

Division/Group Assignment List (ICS 204 WF)

1. Incident Name:			3.			
MODOC JULY COMPLEX			Branch:		Division/Group:	
2. Operational Period: DAY			II NORTH		K / M	
Date/Time From: 08/07/2017 0600 MON	Date/Time To: 08/07/2017 1800 MON					
4. Operations Personnel						
OPERATIONS CHIEF		BRIAN RHODES		DIVISION/GROUP SUPERVISOR		BRANDON WOODWARD DEBORAH FLOWERS (T)
BRANCH DIRECTOR		MIKE TUCKER / BELINDA PLUMMER (T)		AIR TACTICAL GROUP SUPERVISOR		GARY MONDAY
5. Resources Assigned this Period						
Strike Team / Task Force / Resource Designator		LWD	Leader	Number Persons	Drop Off PT./Time	Pick Up PT./Time
FEMT O-165		08/11	ROYCE HUDSON	1	ICP/0600	ICP/1800
FEMP O-462		08/16	ROBERT WEIST	1	ICP/0600	ICP/1800
SOFR O-144		08/09	WILLIAM CIRONE	1	ICP/0600	ICP/1800
6. Control Operations/Work Assignments:						
<ul style="list-style-type: none"> • Utilize appropriate suppression actions to keep fire within current containment lines. 						
7. Special Instructions:						
<ul style="list-style-type: none"> • Track water usage and turn into Finance. • Provide location of accountable property and dozer lines and turn into Situation Unit. • Back haul trash. • Continue to coordinate with O.D.F. at state line. • Follow traffic plan: On coming shift resources take 46 Road. Off shift resources take 73 Road. • Any suppression repair must be cleared through the Suppression Repair Branch. • CHECK COMM PLAN. • SELECT APPROPRIATE COMMAND CHANNEL BASED ON FIRE LOCATION. 						
8. Division/Group Communication Summary						
Function	Channel	RX Frequency N/W	RX Tone/NAC	TX Frequency N/W	TX Tone/NAC	Mode
COMMAND	3	168.7000N	0.0	170.9750 N	110.9	A
TACTICAL	10	166.5500 N	0.0	166.5500 N	0.0	A
AIR TO GROUND CMD	13	169.0875 N	0.0	169.0875 N	0.0	A
AIR TO GROUND TAC	14	165.0000 N	0.0	165.0000 N	0.0	A
9. Prepared By (Resource Unit Leader)			Approved By (Planning Section Chief)		Date	Time
SERGIO ARJONILLA (T)			DAVE GERBOTH		08/06/2017	2300

Division/Group Assignment List (ICS 204 WF)

1. Incident Name:			3.			
MODOC JULY COMPLEX			Branch:		Division/Group:	
2. Operational Period: DAY			II NORTH		NORTH ROAD GROUP	
Date/Time From: 08/07/2017 0600 MON		Date/Time To: 08/07/2017 1800 MON				
4. Operations Personnel						
OPERATIONS CHIEF		BRIAN RHODES		DIVISION/GROUP SUPERVISOR		BILL HITT
AIR TACTICAL GROUP SUPERVISOR		GARY MONDAY				
5. Resources Assigned this Period						
Strike Team / Task Force / Resource Designator		LWD	Leader	Number Persons	Drop Off PT./Time	Pick Up PT./Time
RDGRD1 DIG IT CONST 632835 E-309		08/17	LUKE MASON	2	ICP/0600	ICP/1800
WTS1 BRIAN PHILIPS 91 E-207		08/13	SMITH MATT	1	ICP/0600	ICP/1800
WTS1 BEN'STRUCK 57 E-252		08/14	ANARBOL CISNEROSTORRES	1	ICP/0600	ICP/1800
WTS1 OILAR 133A E-208		08/11	NICK OILER	1	ICP/0600	ICP/1800
WTS1 B&G E-253		08/14	GLEN REILLY	1	ICP/0600	ICP/1800
WTS1 BEN'S TRUCK 862918 E-251		08/14	ROB MOORE	1	ICP/0600	ICP/1800
WTS1 BEN'S TRUCK 862915 E-209		08/11	JOHN PRESISE	1	ICP/0600	ICP/1800
WTS2 OILAR DANIEL 262882 E-261		08/14	DANIEL OILER	2	ICP/0600	ICP/1800
WTS2 CREEK RANCH E-149		08/11	LANCE LINKER	2	ICP/0600	ICP/1800
WTS2 O ACKLEY E-60		08/08	RAY ACKLEY	1	ICP/0600	ICP/1800
6. Control Operations/Work Assignments:						
<ul style="list-style-type: none"> • Maintain and dust abate roads. 						
7. Special Instructions:						
<ul style="list-style-type: none"> • Check in with Branch I and Branch II for priorities. • Any suppression repair must be cleared through the Suppression Repair Branch. • CHECK COMM PLAN. • SELECT APPROPRIATE COMMAND CHANNEL BASED ON LOCATION. 						
8. Division/Group Communication Summary						
Function	Channel	RX Frequency N/W	RX Tone/NAC	TX Frequency N/W	TX Tone/NAC	Mode
COMMAND	3	168.7000N	0.0	170.9750 N	110.9	A
AIR TO GROUND COM	13	169.0875 N	0.0	169.0875 N	0.0	A
AIR TO GROUND TAC	14	165.0000 N	0.0	165.0000 N	0.0	A
9. Prepared By (Resource Unit Leader)			Approved By (Planning Section Chief)		Date	Time
JIM RAMIREZ (T)			DAVE GERBOTH		08/06/2017	2300

AIR OPERATIONS SUMMARY

Prepared By: Kevin Murray

Prepared Date: 8/06/2017

Prepared Time: 21:00

1. INCIDENT NAME: Modoc July Complex North	2. OPS PERIOD DATE: 8/07/2017	START TIME: 0800	END TIME: 2000	SUNRISE: 0603	SUNSET: 2013
3. REMARKS (Safety Notes, Hazards, Air Operations, Special Equipment, etc.): Watch for wires in river canyon. Beware of rapidly changing VFR conditions due to smoke Watch for thunderstorm development.			4. READY ALERT AIRCRAFT MEDEVAC 525 Cal Fire Bieber Hoist I.A. All		5. TFR #: TFR removed 8/6/2017

6. PERSONNEL	NAME	PHONE #	7. FREQUENCIES	AM	FM	8. FIXED-WING- Type/ Make-Model/ N#/ Base
AOBD	Kevin Murray	805-878-1484	AIR/ AIR FW- PRI		167.3000	AIRTANKERS - Ordered by ATGS
ATGS	Gary Monday	805-504-5874	AIR/ AIR RW- SND		168.8375	LEAD PLANES- Ordered by ATGS
ATGS	Fred Burris	805-340-0408	AIR/ AIR RW- PRI	128.250		6DV - Monday 67A - Burris
ASGS	Ty Miller	907-460-7530	AIR/ AIR RW- SND	118.950		
ASGS	Jim Stratton	760-207-4325	A/G Command		169.0875	MDF ECC Aircraft Dispatcher 530-233-8880
			A/G Tactical		165.0000	
			IA A/G 53 - PRI		167.6000	
			IA A/G 08 - SND		166.8750	OTHER FW AIRCRAFT-
HEB1	Brad Nelson	559-349-6793				
HEB1 (T)	Stefan Goldstein	530-902-0327	RW Flight Follow	119.5250		
Alturas	Helibase	530-233-1240	DECK		163.100	
	Fax	530-233-5865	Tower	127.275		

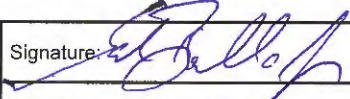
9. HELICOPTERS (Use Additional Sheets as Necessary)

FAA N#	T Y	MAKE/ MODEL	BASE	AVAIL	START	REMARKS	FAA N#	T Y	MAKE/ MODEL	BASE	AVAIL	START	REMARKS
1KA	1	Kamax (A-26)	Alturas	0900	0900	Parker 2	535	3	Astar B3++	Alturas	0900	0900	IA
792	1	CH54A (A-20)	Alturas	0900	0900	IA	7AC	3	Bell 407	Alturas	0900	0900	IR
5TK	2	Bell 205 A1++	Alturas	0900	0900	IA							
538	2	Bell 205 A1++	Alturas	0900	0900	IA							

10. TASK/ MISSION/ ASSIGNMENT (Type/ function includes: Air Tactical, Retardant, Recon, Personnel Transport, Bucket Operations, SAR, etc.)

TYPE/FUNCTION	NAME OF PERSONNEL OR CARGO (If applicable) or instructions for tactical aircraft	MISSION START	FLY FROM	FLY TO
Water Dropping		As Needed		
Recon				

INCIDENT RADIO COMMUNICATIONS PLAN (ICS 205)

1. Incident Name:			2. Date/Time Prepared:			3. Operational Period: DAY				
MODOC JULY COMPLEX NORTH			Date: 08/06/2017 Time: 1623			Date/Time From: 08/07/2017 0600 MON			Date/Time To: 08/07/2017 1800 MON	
4. Basic Radio Channel Use:										
Zone Group	Ch #	Function	Channel Name/Trunked Radio System Talkgroup	Assignment	RX Freq	RX Tone/NAC	TX Freq	TX Tone/NAC	Mode (A,D, or M)	Remarks
15	1	BLANK								
15	2	BLANK								
15	3	COMMAND	NIFC C1	NORTH CMD	168.7000N	0.0	170.9750 N	110.9	A	BLUE MT LO LINK TO C9,C37
15	4	COMMAND	NIFC C9	NORTH CMD	170.0125 N	0.0	165.2500 N	110.9	A	GROUSE MT LINK TO C1,C37
15	5	COMMAND	NIFC C37	NORTH CMD	171.0375 N	0.0	165.3625 N	110.9	A	HAPPY CAMP MT. LINK C-1,C-9
15	6	TACTICAL	NIFC T1	DIV A/C/E	168.0500 N	110.9	168.0500 N	110.9	A	
15	7	TACTICAL	NIFC T3	UNASSIGNED	168.6000 N	110.9	168.6000 N	110.9	A	
15	8	TACTICAL	NIFC T5	DIV I, O, STAGING	166.7250 N	110.9	166.7250 N	110.9	A	
15	9	TACTICAL	NIFC T6	DIV G	166.7750 N	110.9	166.7750 N	110.9	A	
15	10	TACTICAL	R5 T4	DIV K / M	166.5500 N	0.0	166.5500 N	0.0	A	
15	11	TACTICAL	R5 T5	UNASSIGNED	167.1125 N	0.0	167.1125 N	0.0	A	
15	12	TACTICAL	R5 T6	S. REPAIR	168.2375 N	0.0	168.2375 N	0.0	A	
15	13	AIR TO GROUND	A/G CMD	ALL DIVISIONS	169.0875 N	0.0	169.0875 N	0.0	A	ORDERING RESOURCES
15	14	AIR TO GROUND	A/G TAC	ALL DIVISIONS	165.0000 N	0.0	165.0000 N	0.0	A	A/G TACTICAL COORDINATION
15	15	TACTICAL	CALCORD	ALL DIVISIONS	156.0750 N	156.7	156.0750 N	156.7	A	MEDICAL AIR COORDINATION
15	16	AIR GUARD	GUARD	ALL DIVISIONS	168.6250 N	0.0	168.6250 N	110.9	A	EMERGENCY USE ONLY TONE 1
5. Special Instructions:										
July Communication 1-925-588-6853										
6. Prepared By (Communications Unit Leader)				Name: SAL BONILLA, JR. / NICK LUBY				Signature: 		
ICS 205				IAP Page				Date/Time: 08/06/2017 1623		

SOUTH ZONE

Division/Group Assignment List (ICS 204 WF)

1. Incident Name:		3.				
MODOC JULY COMPLEX		Branch:		Division/Group:		
2. Operational Period: DAY		V SOUTH		PP		
Date/Time From: 08/07/2017 0600	MON	Date/Time To: 08/07/2017 1800	MON			
4. Operations Personnel						
OPERATIONS CHIEF		PATRICK TITUS		DIVISION/GROUP SUPERVISOR		CLAY MATHESON DON SHOEMAKER (T)
BRANCH DIRECTOR		DAVE PEREIRA		AIR TACTICAL GROUP SUPERVISOR		GARY MONDAY
5. Resources Assigned this Period						
Strike Team / Task Force / Resource Designator	LWD	Leader	Number Persons	Drop Off PT./Time	Pick Up PT./Time	
6. Control Operations/Work Assignments:						
<ul style="list-style-type: none"> Utilize appropriate suppression actions to keep fire within current containment lines. Pay special attention to Junipers holding heat. 						
7. Special Instructions:						
<ul style="list-style-type: none"> Track water usage and turn into Finance. Provide location of accountable property and dozer lines and turn into Situation Unit Back haul trash. Any suppression repair must be cleared through the Suppression Repair Branch. 						
8. Division/Group Communication Summary						
Function	Channel	RX Frequency N/W	RX Tone/NAC	TX Frequency N/W	TX Tone/NAC	Mode
COMMAND	12	169.9500 N	0.0	164.1000 N	146.2	A
TACTICAL	9	166.5500 N	0.0	166.5500 N	0.0	A
AIR TO GROUND CMD	13	169.8250 N	0.0	169.8250 N	0.0	A
AIR TO GROUND TAC	14	169.4875 N	0.0	169.4875 N	0.0	A
9. Prepared By (Resource Unit Leader)			Approved By (Planning Section Chief)		Date	Time
BRIAN LAVELLE (T)			DAVE GERBOTH		08/06/2017	2300

Division/Group Assignment List (ICS 204 WF)

1. Incident Name:				3.		
MODOC JULY COMPLEX				V SOUTH		RR / TT
2. Operational Period: DAY						
Date/Time From: 08/07/2017 0600 MON		Date/Time To: 08/07/2017 1800 MON				
4. Operations Personnel						
OPERATIONS CHIEF		PATRICK TITUS		DIVISION/GROUP SUPERVISOR		ERIK M JOHNSON TED KING (T)
BRANCH DIRECTOR		DAVE PEREIRA		AIR TACTICAL GROUP SUPERVISOR		GARY MONDAY
5. Resources Assigned this Period						
Strike Team / Task Force / Resource Designator		LWD	Leader	Number Persons	Drop Off PT./Time	Pick Up PT./Time
CRW2 P.R. REFOREST C-97		08/17	MARCO MENDOZA	20	ICP/0600	ICP/1800
CRW2 IMPERIAL F C-72		08/14	EFREN MORENO	20	ICP/0600	ICP/1800
ENG3 S/T 2142C E-258		08/14	MICHAEL ST JOHN	22	ICP/0600	ICP/1800
ENG3 ANF 31 E-159		08/08	JUSTIN GONZALES	5	ICP/0600	ICP/1800
ENG3 ENF 364 E-11		08/07	DAVID C FOSTER	5	ICP/0600	ICP/1800
ENG3 MNF 352 E-10		08/08	FRED BURROWS	5	ICP/0600	ICP/1800
CHIP2 TORCHFIRE E-297		08/17	DAVID STANDISH	1	ICP/0600	ICP/1800
TFLD O-261		08/09	JASON PORTER	1	ICP/0600	ICP/1800
TFLD (T) O-369		08/15	BRIAN ETHERIDGE	1	ICP/0600	ICP/1800
FEMP O-90		08/08	IAN CROSSLEY	1	ICP/0600	ICP/1800
FEMT O-57		08/09	JOBEE FARRER	1	ICP/0600	ICP/1800
SOFR O-49		08/08	RANDAL C VINSON	1	ICP/0600	ICP/1800
READ O-395		08/16	CECILIA MARELLA	1	ICP/0600	ICP/1800
REAF O-265		08/11	LEVI BATEMAN	1	ICP/0600	ICP/1800
READ (T) O-62		08/09	GARRETT NOLES	1	ICP/0600	ICP/1800
8. Division/Group Communication Summary						
Function	Channel	RX Frequency N/W	RX Tone/NAC	TX Frequency N/W	TX Tone/NAC	Mode
COMMAND	12	169.9500 N	0.0	164.1000 N	146.2	A
TACTICAL	6	168.0500 N	110.9	168.0500 N	110.9	A
AIR TO GROUND CMD	13	169.8250 N	0.0	169.8250 N	0.0	A
AIR TO GROUND TAC	14	169.4875 N	0.0	169.4875 N	0.0	A
9. Prepared By (Resource Unit Leader)			Approved By (Planning Section Chief)		Date	Time
BRIAN LAVELLE (T)			DAVE GERBOTH		08/06/2017	2300

Division/Group Assignment List (ICS 204 WF)

1. Incident Name:			3.			
MODOC JULY COMPLEX			Branch:		Division/Group:	
2. Operational Period: DAY			V SOUTH		RR / TT	
Date/Time From: 08/07/2017 0600 MON		Date/Time To: 08/07/2017 1800 MON				
4. Operations Personnel						
OPERATIONS CHIEF		PATRICK TITUS		DIVISION/GROUP SUPERVISOR		ERIK M JOHNSON TED KING (T)
BRANCH DIRECTOR		DAVE PEREIRA		AIR TACTICAL GROUP SUPERVISOR		GARY MONDAY
5. Resources Assigned this Period						
Strike Team / Task Force / Resource Designator		LWD	Leader	Number Persons	Drop Off PT./Time	Pick Up PT./Time
6. Control Operations/Work Assignments:						
<ul style="list-style-type: none"> Utilize appropriate suppression actions to keep fire within current containment lines. Pay special attention to Junipers holding heat. 						
7. Special Instructions:						
<ul style="list-style-type: none"> Track water usage and turn into Finance. Provide location of accountable property and dozer lines and turn into Situation Unit. Back haul trash. Any suppression repair must be cleared through the Suppression Repair Branch. 						
8. Division/Group Communication Summary						
Function	Channel	RX Frequency N/W	RX Tone/NAC	TX Frequency N/W	TX Tone/NAC	Mode
COMMAND	12	169.9500 N	0.0	164.1000 N	146.2	A
TACTICAL	6	168.0500 N	110.9	168.0500 N	110.9	A
AIR TO GROUND CMD	13	169.8250 N	0.0	169.8250 N	0.0	A
AIR TO GROUND TAC	14	169.4875 N	0.0	169.4875 N	0.0	A
9. Prepared By (Resource Unit Leader)			Approved By (Planning Section Chief)		Date	Time
BRIAN LAVELLE (T)			DAVE GERBOTH		08/06/2017	2300

Division/Group Assignment List (ICS 204 WF)

1. Incident Name:			3.			
MODOC JULY COMPLEX			Branch:		Division/Group:	
2. Operational Period: DAY			V SOUTH		UU	
Date/Time From: 08/07/2017 0600 MON		Date/Time To: 08/07/2017 1800 MON				
4. Operations Personnel						
OPERATIONS CHIEF		PATRICK TITUS		DIVISION/GROUP SUPERVISOR		KELLY CORNWALL
BRANCH DIRECTOR		DAVE PEREIRA		AIR TACTICAL GROUP SUPERVISOR		GARY MONDAY
5. Resources Assigned this Period						
Strike Team / Task Force / Resource Designator		LWD	Leader	Number Persons	Drop Off PT./Time	Pick Up PT./Time
CRW1 S/T 9223G C-44		08/27	MICHAEL STEINEKE	30	ICP/0600	ICP/1800
CRW2IA WHITE MOUNTAIN C-21		08/12	OWEN SMITH	20	ICP/0600	ICP/1800
CRW2IA LASSEN 9 C-50		08/11	ALLEN SCHULTZE	20	ICP/0600	ICP/1800
CRW2IA GROVELAND 4 C-39		08/10	PATRICK LAENG	18	ICP/0600	ICP/1800
CRW2 FIRST STRIKE C-66		08/14	JAMES REICH	20	ICP/0600	ICP/1800
CRW2 STEELHEAD 17116 C-81		08/17	ALEJANDRO RODRIGUEZ	20	ICP/0600	ICP/1800
ENG3 S/T 6210C E-259		08/08	JEREMY AULT	20	ICP/0600	ICP/1800
ENG3 ANF 339 E-162		08/08	BRYAN MONTERROSA	5	ICP/0600	ICP/1800
ENG3 ANF 21 E-160		08/08	BRANDON BURRILL	5	ICP/0600	ICP/1800
ENG3 LMU 2268 E-20009		09/05	ALAN THORNHILL	3	ICP/0600	ICP/1800
DOZ2 DIAMOND BRITTEN E-170		08/10	JOHN BRITTEN	1	ICP/0600	ICP/1800
GRAD1 OILAR E-211		08/13	JAMES WHITE	2	ICP/0600	ICP/1800
WTT2 ADIN 4732 E-283		08/13	PAUL LEMKE	2	ICP/0600	ICP/1800
WTT2 LOO 4830 E-284		08/13	BRYAN KENOBBIE	2	ICP/0600	ICP/1800
WTS2 SEMPLE E-147		08/11	ERIK HEAD	1	ICP/0600	ICP/1800
WTS2 HOLT LOGGING 77271 E-302		08/16	PAUL HARDIG	1	ICP/0600	ICP/1800
TFLD O-234		08/11	KRIS LARSON	1	ICP/0600	ICP/1800
HEQB O-116		08/11	TIM A COLLINS	1	ICP/0600	ICP/1800
HEQB (T) O-370		08/16	JOE BRINSON JR	1	ICP/0600	ICP/1800
FALMC N ZONE 13 O-403		08/16	MIKE REUSZE	2	ICP/0600	ICP/1800
8. Division/Group Communication Summary						
Function	Channel	RX Frequency N/W	RX Tone/NAC	TX Frequency N/W	TX Tone/NAC	Mode
COMMAND	12	169.9500 N	0.0	164.1000 N	146.2	A
TACTICAL	8	166.7250 N	110.9	166.7250 N	110.9	A
AIR TO GROUND CMD	13	169.8250 N	0.0	169.8250 N	0.0	A
AIR TO GROUND TAC	14	169.4875 N	0.0	169.4875 N	0.0	A
9. Prepared By (Resource Unit Leader)			Approved By (Planning Section Chief)		Date	Time
GINA BALD			DAVE GERBOTH		08/06/2017	2300

Division/Group Assignment List (ICS 204 WF)

1. Incident Name:			3.			
MODOC JULY COMPLEX			Branch:		Division/Group:	
2. Operational Period: DAY			V SOUTH		UU	
Date/Time From: 08/07/2017 0600	MON	Date/Time To: 08/07/2017 1800	MON			
4. Operations Personnel						
OPERATIONS CHIEF	PATRICK TITUS		DIVISION/GROUP SUPERVISOR	KELLY CORNWALL		
BRANCH DIRECTOR	DAVE PEREIRA		AIR TACTICAL GROUP SUPERVISOR	GARY MONDAY		
5. Resources Assigned this Period						
Strike Team / Task Force / Resource Designator	LWD	Leader	Number Persons	Drop Off PT./Time	Pick Up PT./Time	
FOBS O-81	08/09	AARON BENNINGTON	1	ICP/0600	ICP/1800	
FOBS (T) O-82	08/09	FRANK SIMMONS	1	ICP/0600	ICP/1800	
FEMP O-282	08/13	ERIC FERREIRA	1	ICP/0600	ICP/1800	
FEMP O-280	08/13	ANTHONY D RIVAS	1	ICP/0600	ICP/1800	
SOFR O-145	08/11	DANIEL GILES	1	ICP/0600	ICP/1800	
6. Control Operations/Work Assignments:						
<ul style="list-style-type: none"> • Utilize appropriate suppression actions to keep fire within current containment lines. • Pay special attention to Junipers holding heat. 						
7. Special Instructions:						
<ul style="list-style-type: none"> • Track water usage and turn into Finance. • Provide location of accountable property and dozer lines and turn into Situation Unit. • Back haul trash. • Any suppression repair must be cleared through the Suppression Repair Branch. 						
8. Division/Group Communication Summary						
Function	Channel	RX Frequency N/W	RX Tone/NAC	TX Frequency N/W	TX Tone/NAC	Mode
COMMAND	12	169.9500 N	0.0	164.1000 N	146.2	A
TACTICAL	8	166.7250 N	110.9	166.7250 N	110.9	A
AIR TO GROUND CMD	13	169.8250 N	0.0	169.8250 N	0.0	A
AIR TO GROUND TAC	14	169.4875 N	0.0	169.4875 N	0.0	A
9. Prepared By (Resource Unit Leader)		Approved By (Planning Section Chief)		Date	Time	
GINA BALD		DAVE GERBOTH		08/06/2017	2300	

Division/Group Assignment List (ICS 204 WF)

1. Incident Name:			3.			
MODOC JULY COMPLEX			V		Division/Group: SOUTH ROAD GROUP	
2. Operational Period: DAY						
Date/Time From: 08/07/2017 0600 MON		Date/Time To: 08/07/2017 1800 MON				
4. Operations Personnel						
OPERATIONS CHIEF		PATRICK TITUS BRIAN RHODES		GROUND SUPPORT LEADER		KIRBY HENNINGS
				AIR TACTICAL GROUP SUPERVISOR		GARY MONDAY
5. Resources Assigned this Period						
Strike Team / Task Force / Resource Designator		LWD	Leader	Number Persons	Drop Off PT./Time	Pick Up PT./Time
WTS1 DIG IT CONST E-304		08/16	TYLER KELLY	1	ICP/0600	ICP/1800
WTS1 NORTHST HEAVY #321 E-306		08/17	STEVE LANZA	1	ICP/0600	ICP/1800
WTS1 SEMPLE, JOHN 328131 E-307		08/19	GARY SHOPE	1	ICP/0600	ICP/1800
WTS1 N ST HEAVY EQUIP #335 E-308		08/17	SCOTT BICKERS	1	ICP/0600	ICP/1800
WTS1 LEPAGE CO 1 E-303		08/16	FRANK PONKE	1	ICP/0600	ICP/1800
6. Control Operations/Work Assignments:						
<ul style="list-style-type: none"> • Maintain and dust abate roads. 						
7. Special Instructions:						
<ul style="list-style-type: none"> • Check in with Branch V for priorities. • Any suppression repair must be cleared through the Suppression Repair Branch. • CHECK COMM PLAN. • SELECT APPROPRIATE COMMAND CHANNEL BASED ON LOCATION. 						
8. Division/Group Communication Summary						
Function	Channel	RX Frequency N/W	RX Tone/NAC	TX Frequency N/W	TX Tone/NAC	Mode
COMMAND	12	169.9500 N	0.0	164.1000 N	146.2	A
AIR TO GROUND CMD	13	169.8250 N	0.0	169.8250 N	0.0	A
AIR TO GROUND TAC	14	169.4875 N	0.0	169.4875 N	0.0	A
9. Prepared By (Resource Unit Leader)			Approved By (Planning Section Chief)		Date	Time
GINA BALD			DAVE GERBOTH		08/06/2017	2300

AIR OPERATIONS SUMMARY

Prepared By: Kevin Murray

Prepared Date: 8/06/2017

Prepared Time: 21:00

1. INCIDENT NAME: Modoc July Complex South	2. OPS PERIOD DATE: 8/07/2017	START TIME: 0800	END TIME: 2000	SUNRISE: 0603	SUNSET: 2013
3. REMARKS (Safety Notes, Hazards, Air Operations, Special Equipment, etc.): Watch for wires in river canyon. Beware of rapidly changing VFR conditions due to smoke Watch for thunderstorm development.			4. READY ALERT AIRCRAFT MEDEVAC 525 Cal Fire Bieber Hoist I.A. All		5. TFR #: TFR removed 8/6/2017

6. PERSONNEL	NAME	PHONE #	7. FREQUENCIES	AM	FM	8. FIXED-WING- Type/ Make-Model/ N#/ Base
AOBD	Kevin Murray	805-878-1484	AIR/ AIR FW- PRI		167.3000	AIRTANKERS - Ordered by ATGS
ATGS	Gary Monday	805-504-5874	AIR/ AIR RW- SND		168.8375	LEAD PLANES- Ordered by ATGS
ATGS	Fred Burris	805-340-0408	AIR/ AIR RW- PRI	128.250		6DV - Monday 67A - Burris
ASGS	Ty Miller	907-460-7530	AIR/ AIR RW- SND	118.950		
ASGS	Jim Stratton	760-207-4325	A/G Command		169.8250	MDF ECC Aircraft Dispatcher 530-233-8880
			A/G Tactical		169.4875	
			IA A/G 53 - PRI		167.6000	
			IA A/G 08 - SND		166.8750	OTHER FW AIRCRAFT-
HEB1	Brad Nelson	559-349-6793				
HEB1 (T)	Stefan Goldstein	530-902-0327	RW Flight Follow	119.5250		
Alturas	Helibase	530-233-1240	DECK		163.100	
	Fax	530-233-5865	Tower	127.275		

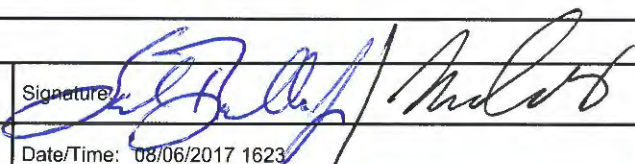
9. HELICOPTERS (Use Additional Sheets as Necessary)

FAA N#	T Y	MAKE/ MODEL	BASE	AVAIL	START	REMARKS	FAA N#	T Y	MAKE/ MODEL	BASE	AVAIL	START	REMARKS
1KA	1	Kamax (A-26)	Alturas	0900	0900	Parker 2	535	3	Astar B3++	Alturas	0900	0900	IA
792	1	CH54A (A-20)	Alturas	0900	0900	IA	7AC	3	Bell 407	Alturas	0900	0900	IR
5TK	2	Bell 205 A1++	Alturas	0900	0900	IA							
538	2	Bell 205 A1++	Alturas	0900	0900	IA							

10. TASK/ MISSION/ ASSIGNMENT (Type/ function includes: Air Tactical, Retardant, Recon, Personnel Transport, Bucket Operations, SAR, etc.)

TYPE/FUNCTION	NAME OF PERSONNEL OR CARGO (If applicable) or instructions for tactical aircraft	MISSION START	FLY FROM	FLY TO
Water Dropping		As Needed		
Recon				

INCIDENT RADIO COMMUNICATIONS PLAN (ICS 205)

1. Incident Name:			2. Date/Time Prepared:			3. Operational Period: DAY				
MODOC JULY COMPLEX SOUTH			Date: 08/06/2017 Time: 1623			Date/Time From: 08/07/2017 0600 MON		Date/Time To: 08/07/2017 1800 MON		
4. Basic Radio Channel Use:										
Zone Group	Ch #	Function	Channel Name/Trunked Radio System Talkgroup	Assignment	RX Freq	RX Tone/NAC	TX Freq	TX Tone/NAC	Mode (A,D, or M)	Remarks
14	1	BLANK								
14	2	BLANK								
14	3	COMMAND	NIFC C1	NORTH CMD	168.7000N	0.0	170.9750 N	110.9	A	BLUE MT LO LINK TO C9,C37
14	4	COMMAND	NIFC C9	NORTH CMD	170.0125 N	0.0	165.2500 N	110.9	A	GROUSE MT LINK TO C1,C37
14	5	COMMAND	NIFC C37	NORTH CMD	171.0375 N	0.0	165.3625 N	110.9	A	HAPPY CAMP MT. LINK C-1,C-9
14	6	TACTICAL	NIFC T1	DIV RR/TT	168.0500 N	110.9	168.0500 N	110.9	A	
14	7	TACTICAL	NIFC T3	CONTINGENCY S	168.6000 N	110.9	168.6000 N	110.9	A	
14	8	TACTICAL	NIFC T5	DIV UU, STAGING	166.7250 N	110.9	166.7250 N	110.9	A	
14	9	TACTICAL	R5 T4	DIV PP	166.5500 N	0.0	166.5500 N	0.0	A	
14	10	TACTICAL	R5 T5	UNASSIGNED	167.1125 N	0.0	167.1125 N	0.0	A	
14	11	TACTICAL	R5 T6	S.REPAIR	168.2375 N	0.0	168.2375 N	0.0	A	
14	12	COMMAND	MDF SRV	SOUTH CMD	169.9500 N	0.0	164.1000 N	146.2	A	GROUSE MT T5
14	13	AIR TO GROUND	A/G CMD	ALL DIVISIONS	169.8250 N	0.0	169.8250 N	0.0	A	ORDERING RESOURCES
14	14	AIR TO GROUND	A/G TAC	ALL DIVISIONS	169.4875 N	0.0	169.4875 N	0.0	A	A/G TACTICAL COORDINATION
14	15	TACTICAL	CALCORD	ALL DIVISIONS	156.0750 N	156.7	156.0750 N	156.7	A	MEDICAL AIR COORDINATION
14	16	AIR GUARD	GUARD	ALL DIVISIONS	168.6250 N	0.0	168.6250 N	110.9	A	EMERGENCY USE ONLY TONE 1
5. Special Instructions:										
July Communication 1-925-588-6853										
6. Prepared By (Communications Unit Leader)				Name: SAL BONILLA, JR / NICK LUBY			Signature: 			
ICS 205				IAP Page			Date/Time: 08/06/2017 1623			

INITIAL ATTACK

Division/Group Assignment List (ICS 204 WF)

1. Incident Name:			3.			
MODOC JULY COMPLEX			Branch:		Division/Group:	
2. Operational Period: DAY			IA		NORTH IA	
Date/Time From: 08/07/2017 0600 MON	Date/Time To: 08/07/2017 1800 MON					
4. Operations Personnel						
OPERATIONS CHIEF		PATRICK TITUS		DIVISION/GROUP SUPERVISOR		CHRIS ORR (530) 640-1464. ROB DECAMP (T)
BRANCH DIRECTOR		STEVE MURPHY JAMES W BURTON (T)		AIR TACTICAL GROUP SUPERVISOR		GARY MONDAY
5. Resources Assigned this Period						
Strike Team / Task Force / Resource Designator		LWD	Leader	Number Persons	Drop Off PT./Time	Pick Up PT./Time
DIVS O-114		08/10	MICHAEL WALLACE	1	ICP/0600	ICP/1800
DIVS (T) O-448		08/18	JEDEDIAH GETMAN	1	ICP/0600	ICP/1800
CRW2 SAMOA 61 C-105		08/18	MICHAEL ALLAN	26	ICP/0600	ICP/1800
CRW2 LAVA RIVER FORESTRY C-82		08/17	BERNARDO GARCIA	20	ICP/0600	ICP/1800
CRW2 STEELHEAD 15 C-80		08/17	JACOB PLACE	20	ICP/0600	ICP/1800
ENG3 S/T 2350C E-255		08/14	JOHN STURDEE	21	ICP/0600	ICP/1800
ENG3 MDF 82 E-338		08/11	JIM ADAMS	3	ICP/0600	ICP/1800
ENG3 SWR 8430 E-163		08/08	FRANK JOHN ALVES	4	ICP/0600	ICP/1800
ENG3 MDF 65 E-194		08/10	BERNIE GUTHRIE	7	ICP/0600	ICP/1800
ENG3 MDF 45 E-193		08/10	HEATHER WOODMAN	9	ICP/0600	ICP/1800
ENG6 TIMBERLINE E-321		08/18	DYLAN HOWARD	3	ICP/0600	ICP/1800
ENG6 NM 32 E-322		08/18	RUSSELL A THRUN	3	ICP/0600	ICP/1800
ENG6 L&A WILDFIRE ENG11 E-326		08/18	JOSH WAGNER	3	ICP/0600	ICP/1800
ENG6 GONZALEZ E-330		08/19	JOHN BADJAR	1	ICP/0600	ICP/1800
ENG6 SOUTHERN ROCKY E-329		08/19	HORACE COMANCHE	3	ICP/0600	ICP/1800
ENG6 YABOY E-325		08/19	BRETT BOWER	4	ICP/0600	ICP/1800
DO22 SHERER E-198 (24 HOUR)		08/11	JIM SHERER	2	ICP/0600	ICP/1800
DO22 BEN'S TRUCK E-271		08/14	LARRY OWEN	2	ICP/0600	ICP/1800
DO22 BEN'S E-274		08/14	WILSON PATE	1	ICP/0600	ICP/1800
8. Division/Group Communication Summary						
Function	Channel	RX Frequency N/W	RX Tone/NAC	TX Frequency N/W	TX Tone/NAC	Mode
COMMAND	1	173.7875 N	SEE 205	162.4875 N	SEE 205	A
TACTICAL R5 T6	5	168.2375 N	0.0	168.2375 N	0.0	A
TACTICAL R5 T4	6	166.5500 N	0.0	166.5500 N	0.0	A
AIR TO GROUND 43	13	167.6000 N	0.0	167.6000 N	0.0	A
AIR TO GROUND 08	14	166.8750 N	0.0	166.8750 N	0.0	A
9. Prepared By (Resource Unit Leader)			Approved By (Planning Section Chief)		Date	Time
JIM RAMIREZ (T)			DAVE GERBOTH		08/06/2017	2300

Division/Group Assignment List (ICS 204 WF)

1. Incident Name:			3.			
MODOC JULY COMPLEX			IA		NORTH IA	
2. Operational Period: DAY						
Date/Time From: 08/07/2017 0600 MON		Date/Time To: 08/07/2017 1800 MON				
4. Operations Personnel						
OPERATIONS CHIEF		PATRICK TITUS		DIVISION/GROUP SUPERVISOR		CHRIS ORR (530) 640-1464. ROB DECAMP (T)
BRANCH DIRECTOR		STEVE MURPHY JAMES W BURTON (T)		AIR TACTICAL GROUP SUPERVISOR		GARY MONDAY
5. Resources Assigned this Period						
Strike Team / Task Force / Resource Designator		LWD	Leader	Number Persons	Drop Off PT./Time	Pick Up PT./Time
DO22 SHF 29 E-135 (24 HOUR)		08/11	DAVID-DAY BROWN	2	ICP/0600	ICP/1800
DO22 SHF E-234 (24 HOUR)		08/12	THOMAS GRAHAM	3	ICP/0600	ICP/1800
WTS2 BEN'S TRUCK & EQUIP E-291		08/15	CARL HALE	1	ICP/0600	ICP/1800
WTS2 NORCAL 1 7 E-265		08/15	DOUG REYNOLDS	1	ICP/0600	ICP/1800
WTS2 PRECISION TOW 29318 E-148		08/10	GREG CARTER	1	ICP/0600	ICP/1800
TFLD O-220		08/15	MICHAEL MCMILLAN	1	ICP/0600	ICP/1800
STEN O-210		08/11	STEVE SILVA	1	ICP/0600	ICP/1800
HEQB O-226		08/14	WESLEY HATCH	1	ICP/0600	ICP/1800
HEQB O-227		08/14	RONALD ROCKIS	1	ICP/0600	ICP/1800
HEQB O-115		08/10	DARREN CLUFF	1	ICP/0600	ICP/1800
FOBS O-84		08/10	MICHAEL WACHHOLZ	1	ICP/0600	ICP/1800
FOBS (T) O-374		08/15	JAKE HENRY	1	ICP/0600	ICP/1800
FEMP O-55		08/08	MARK HAAS	1	ICP/0600	ICP/1800
FEMT O-58		08/08	RANDOLPH GREEN	1	ICP/0600	ICP/1800
READ O-228		08/11	JOE SVINARICH	1	ICP/0600	ICP/1800
8. Division/Group Communication Summary						
Function	Channel	RX Frequency N/W	RX Tone/NAC	TX Frequency N/W	TX Tone/NAC	Mode
COMMAND	1	173.7875 N	SEE 205	162.4875 N	SEE 205	A
TACTICAL R5 T6	5	168.2375 N	0.0	168.2375 N	0.0	A
TACTICAL R5 T4	6	166.5500 N	0.0	166.5500 N	0.0	A
AIR TO GROUND 43	13	167.6000 N	0.0	167.6000 N	0.0	A
AIR TO GROUND 08	14	166.8750 N	0.0	166.8750 N	0.0	A
9. Prepared By (Resource Unit Leader)			Approved By (Planning Section Chief)		Date	Time
JIM RAMIREZ (T)			DAVE GERBOTH		08/06/2017	2300

Division/Group Assignment List (ICS 204 WF)

1. Incident Name:			3.			
MODOC JULY COMPLEX			IA		NORTH IA	
2. Operational Period: DAY						
Date/Time From: 08/07/2017 0600 MON		Date/Time To: 08/07/2017 1800 MON				
4. Operations Personnel						
OPERATIONS CHIEF		PATRICK TITUS		DIVISION/GROUP SUPERVISOR		CHRIS ORR (530) 640-1464. ROB DECAMP (T)
BRANCH DIRECTOR		STEVE MURPHY JAMES W BURTON (T)		AIR TACTICAL GROUP SUPERVISOR		GARY MONDAY
5. Resources Assigned this Period						
Strike Team / Task Force / Resource Designator		LWD	Leader	Number Persons	Drop Off PT./Time	Pick Up PT./Time
6. Control Operations/Work Assignments:						
<ul style="list-style-type: none"> • Prepare for I.A. 						
7. Special Instructions:						
<ul style="list-style-type: none"> • Track all existing and new starts. • Staging at Dry Lake. • Group Supervisor is MDF Chris Orr (530) 640-1464. • CHECK IA COMM PLAN. • SELECT APPROPRIATE TONE BASED ON FIRE LOCATION. 						
8. Division/Group Communication Summary						
Function	Channel	RX Frequency N/W	RX Tone/NAC	TX Frequency N/W	TX Tone/NAC	Mode
COMMAND	1	173.7875 N	SEE 205	162.4875 N	SEE 205	A
TACTICAL R5 T6	5	168.2375 N	0.0	168.2375 N	0.0	A
TACTICAL R5 T4	6	166.5500 N	0.0	166.5500 N	0.0	A
AIR TO GROUND 43	13	167.6000 N	0.0	167.6000 N	0.0	A
AIR TO GROUND 08	14	166.8750 N	0.0	166.8750 N	0.0	A
9. Prepared By (Resource Unit Leader)			Approved By (Planning Section Chief)		Date	Time
JIM RAMIREZ (T)			DAVE GERBOTH		08/06/2017	2300

Division/Group Assignment List (ICS 204 WF)

1. Incident Name:			3.			
MODOC JULY COMPLEX			IA		SOUTH IA	
2. Operational Period: DAY						
Date/Time From: 08/07/2017 0600 MON		Date/Time To: 08/07/2017 1800 MON				
4. Operations Personnel						
OPERATIONS CHIEF		PATRICK TITUS		DIVISION/GROUP SUPERVISOR		MIKE CRITES CELL: (530) 708-2068 JOSH OSTEN (T)
BRANCH DIRECTOR		STEVE MURPHY JAMES W BURTON (T)		AIR TACTICAL GROUP SUPERVISOR		GARY MONDAY
5. Resources Assigned this Period						
Strike Team / Task Force / Resource Designator		LWD	Leader	Number Persons	Drop Off PT./Time	Pick Up PT./Time
DIVS O-11		08/10	SHAUN CRAIG	1	ICP/0600	ICP/1800
DIVS (T) O-184		08/10	BRENT BOLTSHAUSER	1	ICP/0600	ICP/1800
CRW2IA BLACK EAGLES 2 C-24		08/09	GUSTAVO SANTOYO-GALLEGOS	27	ICP/0600	ICP/1800
CRW2 COOPER C-96		08/17	SEAN PETERSON	20	ICP/0600	ICP/1800
CRW2 FRANCO C-64		08/13	JAMIE DAVILA	20	ICP/0600	ICP/1800
CRW2 FRANCO C-35		08/13	ARTURO QUEVADO-FRANCO	20	ICP/0600	ICP/1800
ENG3 S/T 4813C E-334		08/11	JAMES P EDMISTON	22	ICP/0600	ICP/1800
ENG3 S/T 6828C E-311		08/17	RON SEYMOUR	22	ICP/0600	ICP/1800
ENG3 S/T 2175C E-257		08/14	CHRIS ORMAN	20	ICP/0600	ICP/1800
ENG3 MDF 44 E-192		08/17	DYLAN PREWITT	5	ICP/0600	ICP/1800
ENG3 HTF 315 E-333		08/15	TAYLOR FARRINGTON	5	ICP/0600	ICP/1800
ENG6 AZ E-362 E-142		08/12	STEVE ESTELLE	4	ICP/0600	ICP/1800
ENG6 J3 CONT 323 A13308 07 E-323		08/19	MESHEL RAD	3	ICP/0600	ICP/1800
ENG6 LANE ENTER A05558 217 E-328		08/19	DAVID LANE	3	ICP/0600	ICP/1800
DOZ1 BUSHEY E-200 (24 HOUR)		08/12	PMINTO TOM	1	ICP/0600	ICP/1800
DOZ2 BEN'S E-270		08/14	BILL SCARVAROUGH	1	ICP/0600	ICP/1800
DOZ2 MDF4 E-195 (24 HOUR)		08/10	KENT INSLEY	1	ICP/0600	ICP/1800
SKG2 LET-ER-BUCK E-239 (24 HOUR)		08/13	STEVE LASSEN	3	ICP/0600	ICP/1800
WTT2 KILLINGBECK /INGRAHAM E-59		08/14	KEN SMITH	1	ICP/0600	ICP/1800
8. Division/Group Communication Summary						
Function	Channel	RX Frequency N/W	RX Tone/NAC	TX Frequency N/W	TX Tone/NAC	Mode
COMMAND	1	173.7875 N	SEE 205	162.4875 N	SEE 205	A
TACTICAL R5 T6	5	168.2375 N	0.0	168.2375 N	0.0	A
TACTICAL R5 T4	6	166.5500 N	0.0	166.5500 N	0.0	A
AIR TO GROUND 43	13	167.6000 N	0.0	167.6000 N	0.0	A
AIR TO GROUND 08	14	166.8750 N	0.0	166.8750 N	0.0	A
9. Prepared By (Resource Unit Leader)			Approved By (Planning Section Chief)		Date	Time
BRIAN LAVELLE (T)			DAVE GERBOTH		08/06/2017	2300

Division/Group Assignment List (ICS 204 WF)

1. Incident Name:			3.			
MODOC JULY COMPLEX			IA		SOUTH IA	
2. Operational Period: DAY						
Date/Time From: 08/07/2017 0600 MON		Date/Time To: 08/07/2017 1800 MON				
4. Operations Personnel						
OPERATIONS CHIEF		PATRICK TITUS		DIVISION/GROUP SUPERVISOR		MIKE CRITES CELL: (530) 708-2068 JOSH OSTEN (T)
BRANCH DIRECTOR		STEVE MURPHY JAMES W BURTON (T)		AIR TACTICAL GROUP SUPERVISOR		GARY MONDAY
5. Resources Assigned this Period						
Strike Team / Task Force / Resource Designator		LWD	Leader	Number Persons	Drop Off PT./Time	Pick Up PT./Time
WTS2 PETERS E-262		08/14	CODY WELDON	1	ICP/0600	ICP/1800
WTS2 GET WET ENTERPRISES E-58		08/15	MINTO TYLER	1	ICP/0600	ICP/1800
WTS2 NOR CAL #1 E-264		08/14	CHRIS NICHOLS	1	ICP/0600	ICP/1800
WTS2 SEMPLE 940 E-152		08/11	AL CROSS	1	ICP/0600	ICP/1800
ICT4 O-351		08/15	JENNIFER LENEAVE	1	ICP/0600	ICP/1800
TFLD O-17		08/09	JUSTIN NASH	1	ICP/0600	ICP/1800
TFLD (T) O-433		08/17	KYLE L BONHAM	1	ICP/0600	ICP/1800
HEQB (T) O-172		08/10	KRISTIN WINFORD	1	ICP/0600	ICP/1800
HEQB O-225		08/11	RODNEY HELZER	1	ICP/0600	ICP/1800
FOBS O-361		08/14	ERIK APLAND	1	ICP/0600	ICP/1800
FOBS O-316		08/14	BRUCE CANN	1	ICP/0600	ICP/1800
FOBS(T) O-326		08/14	JASON KAMMANN	1	ICP/0600	ICP/1800
FOBS (T) O-344		08/15	MICHAEL L TRIERWEILER	1	ICP/0600	ICP/1800
THSP FUELS O-350		08/14	AMANDA SHOAF	1	ICP/0600	ICP/1800
FEMP O-465		08/15	BRENT BOLING	1	ICP/0600	ICP/1800
FEMP O-464		08/15	ROBERT GRADY	1	ICP/0600	ICP/1800
READ O-180		08/10	SUSAN FRYE	1	ICP/0600	ICP/1800
8. Division/Group Communication Summary						
Function	Channel	RX Frequency N/W	RX Tone/NAC	TX Frequency N/W	TX Tone/NAC	Mode
COMMAND	1	173.7875 N	SEE 205	162.4875 N	SEE 205	A
TACTICAL R5 T6	5	168.2375 N	0.0	168.2375 N	0.0	A
TACTICAL R5 T4	6	166.5500 N	0.0	166.5500 N	0.0	A
AIR TO GROUND 43	13	167.6000 N	0.0	167.6000 N	0.0	A
AIR TO GROUND 08	14	166.8750 N	0.0	166.8750 N	0.0	A
9. Prepared By (Resource Unit Leader)			Approved By (Planning Section Chief)		Date	Time
BRIAN LAVELLE (T)			DAVE GERBOTH		08/06/2017	2300

Division/Group Assignment List (ICS 204 WF)

1. Incident Name:			3.			
MODOC JULY COMPLEX			Branch:		Division/Group:	
2. Operational Period: DAY			IA		SOUTH IA	
Date/Time From: 08/07/2017 0600 MON	Date/Time To: 08/07/2017 1800 MON					
4. Operations Personnel						
OPERATIONS CHIEF	PATRICK TITUS		DIVISION/GROUP SUPERVISOR		MIKE CRITES CELL: (530) 708-2068 JOSH OSTEEN (T)	
BRANCH DIRECTOR	STEVE MURPHY JAMES W BURTON (T)		AIR TACTICAL GROUP SUPERVISOR		GARY MONDAY	
5. Resources Assigned this Period						
Strike Team / Task Force / Resource Designator	LWD	Leader	Number Persons	Drop Off PT./Time	Pick Up PT./Time	
6. Control Operations/Work Assignments:						
<ul style="list-style-type: none"> • Prepare for I.A. 						
7. Special Instructions:						
<ul style="list-style-type: none"> • Track all existing and new starts. • Staging at Adin. • Group Supervisor is MDF Mike Crites (530)708-2068. • CHECK IA COMM PLAN. • SELECT APPROPRIATE TONE BASED ON FIRE LOCATION. 						
8. Division/Group Communication Summary						
Function	Channel	RX Frequency N/W	RX Tone/NAC	TX Frequency N/W	TX Tone/NAC	Mode
COMMAND	1	173.7875 N	SEE 205	162.4875 N	SEE 205	A
TACTICAL R5 T6	5	168.2375 N	0.0	168.2375 N	0.0	A
TACTICAL R5 T4	6	166.5500 N	0.0	166.5500 N	0.0	A
AIR TO GROUND 43	13	167.6000 N	0.0	167.6000 N	0.0	A
AIR TO GROUND 08	14	166.8750 N	0.0	166.8750 N	0.0	A
9. Prepared By (Resource Unit Leader)		Approved By (Planning Section Chief)		Date	Time	
BRIAN LAVELLE (T)		DAVE GERBOTH		08/06/2017	2300	

INCIDENT RADIO COMMUNICATIONS PLAN			Incident Name MODOC JULY "IA ONLY"			Date/Time Prepared 8/6/17 2000 HRS.		Operational Period Date/Time 8/7/17 0600-1800 HRS.		
* ONLY USE FREQUENCIES ON THIS FORM DURING FIRE SUPPRESSION *					* USE HUMAN REPEATERS WHEN NECESSARY *					
Ch #	Function	Channel Name/Trunked Radio System Talkgroup	Assignment	RX Freq N or W	RX Tone/NAC	TX Freq N or W	Tx Tone/NAC	Mode	Remarks	
1	COMMAND	ADM TN5	IA MODOC	173.7875 N	0.0	162.4875 N	146.2	A	GROUSE MT T5	
2	COMMAND	ADM TN7	IA MODOC	173.7875 N	0.0	162.4875 N	167.9	A	RED SHALE MT T7	
3	COMMAND	ADM TN3	IA MODOC	173.7875 N	0.0	162.4875 N	131.8	A	LIKELY MT T3	
4	COMMAND	ADM TN8	IA MODOC	173.7875 N	0.0	162.4875 N	103.5	A	WIDOW MT T8	
5	TACTICAL	R5 T6	ALL DIVISIONS	168.2375 N	0.0	168.2375 N	0.0	A		
6	TACTICAL	R5 T4	ALL DIVISIONS	166.5500 N	0.0	166.5500 N	0.0	A		
7	TACTICAL	FOR RX	ALL DIVISIONS	170.7375 N	0.0	BLANK	0.0	A	<u>RX ONLY-FOR MONITORING</u>	
8	TACTICAL	CDF T 3	ALL DIVISIONS	151.1750 N	192.8	151.1750 N	192.8	A		
9	TACTICAL	CDF T10	ALL DIVISIONS	151.4000 N	192.8	151.4000 N	192.8	A		
10	TACTICAL	NIFC T2	ALL DIVISIONS	168.2000 N	0.0	168.2000 N	0.0	A		
11	TACTICAL	NIFC T7	ALL DIVISIONS	168.2500 N	0.0	168.2500 N	0.0	A		
12	TACTICAL	VFIRE 22	ALL DIVISIONS	154.2650 N	156.7	154.2650 N	156.7	A		
13	AIR/GROUND	AG-43	ALL DIVISIONS	167.6000 N	0.0	167.6000 N	0.0	A		
14	AIR/GROUND	AG-08	ALL DIVISIONS	166.8750 N	0.0	166.8750 N	0.0	A		
15	MEDICAL COORDINATION	CALCORD	ALL DIVISIONS	156.0750 N	156.7	156.0750 N	156.7	A		
16/20	AIR GUARD	GUARD	ALL DIVISIONS	168.6250 N	0.0	168.6250 N	110.9	A	EMERGENCY USE ONLY TONE 1	
5. Prepared by (Communications Unit) Sal Bonilla Jr. - COM1 Nick Luby COM1(I)					Incident Location County _____ State _____ Latitude _____ N Longitude _____ W _____					

SUPPRESSION REPAIR STAGING

Division/Group Assignment List (ICS 204 WF)

1. Incident Name:			3.			
MODOC JULY COMPLEX			Branch:		Division/Group:	
2. Operational Period: DAY			REPAIR		SUPPRESSION REPAIR	
Date/Time From: 08/07/2017 0600 MON	Date/Time To: 08/07/2017 1800 MON					
4. Operations Personnel						
OPERATIONS CHIEF		BRIAN RHODES		DIVISION/GROUP SUPERVISOR		HAROLD L KIBBE
BRANCH DIRECTOR		BRETT WATERS		AIR TACTICAL GROUP SUPERVISOR		GARY MONDAY
5. Resources Assigned this Period						
Strike Team / Task Force / Resource Designator		LWD	Leader	Number Persons	Drop Off PT./Time	Pick Up PT./Time
DOZ2 STEWART E-98		08/09	TOM STEWART	1	ICP/0600	ICP/1800
EXCA2 EWING E-272		08/14	TONY EWING	2	ICP/0600	ICP/1800
EXCA2 DIAMOND RING E-350		08/20	JOHN BRITTEN	2	ICP/0600	ICP/1800
EXCA2 WHITE 321 E-273		08/13	WHITE DUSTIN	2	ICP/0600	ICP/1800
EXCA2 M PETERS 504893 E-2 E-352		08/19	JIM SCOTT	2	ICP/0600	ICP/1800
TFLD O-190		08/12	LAWSON LOGAN JR	1	ICP/0600	ICP/1800
TFLD O-397		08/14	PAUL CATLETT	1	ICP/0600	ICP/1800
TFLD (T) O-364		08/14	DAN PEARSALL	1	ICP/0600	ICP/1800
HEBQ O-8		08/08	JACK C TURNER	1	ICP/0600	ICP/1800
HEBQ (T) O-431		08/18	DANIEL KAADY	1	ICP/0600	ICP/1800
HEBQ (T) O-432		08/19	WILLIAM B HOWARD	1	ICP/0600	ICP/1800
6. Control Operations/Work Assignments:						
<ul style="list-style-type: none"> • Scout and gain intel on areas needing repair within complex. 						
7. Special Instructions:						
<ul style="list-style-type: none"> • Coordinate with lead READ. • Map and report progress with Situation Unit. 						
8. Division/Group Communication Summary						
Function	Channel	RX Frequency N/W	RX Tone/NAC	TX Frequency N/W	TX Tone/NAC	Mode
COMMAND	12	169.9500 N	0.0	164.1000 N	146.2	A
TACTICAL	11	168.2375 N	0.0	168.2375 N	0.0	A
AIR TO GROUND CMD	13	169.8250 N	0.0	169.8250 N	0.0	A
AIR TO GROUND TAC	14	169.4875 N	0.0	169.4875 N	0.0	A
9. Prepared By (Resource Unit Leader)			Approved By (Planning Section Chief)		Date	Time
GINA BALD			DAVE GERBOTH		08/06/2017	2300

Division/Group Assignment List (ICS 204 WF)

1. Incident Name:			3.			
MODOC JULY COMPLEX			Branch:		Division/Group:	
2. Operational Period: DAY					STAGING	
Date/Time From: 08/07/2017 0600 MON	Date/Time To: 08/07/2017 1800 MON					
4. Operations Personnel						
OPERATIONS CHIEF		PAT TITUS / BRIAN RHODES		STAGING AREA MANAGER		ROBIN ACE
				AIR TACTICAL GROUP SUPERVISOR		GARY MONDAY
5. Resources Assigned this Period						
Strike Team / Task Force / Resource Designator		LWD	Leader	Number Persons	Drop Off PT./Time	Pick Up PT./Time
DO22 BUSHEY 1 E-7		08/07	BOB W BUSHEY	2	ICP/0600	ICP/1800
6. Control Operations/Work Assignments:						
<ul style="list-style-type: none"> ▪ Ability to respond within 5 minutes. 						
7. Special Instructions:						
<ul style="list-style-type: none"> ▪ All unassigned resources report to STAM. ▪ Staging area is located at entrance of ICP. 						
8. Division/Group Communication Summary						
Function	Channel	RX Frequency N/W	RX Tone/NAC	TX Frequency N/W	TX Tone/NAC	Mode
COMMAND	12	169.9500 N	0.0	164.1000 N	146.2	A
9. Prepared By (Resource Unit Leader)			Approved By (Planning Section Chief)		Date	Time
BRIAN LAVELLE (T)			DAVE GERBOTH		08/06/2017	2300

Modoc July Complex – Safety Message

INCIDENT #CA-MDF-000671

DATE: 08-07-17 TIME: 0600 – 1800 Day

Firefighter Fatigue/Driver Safety/Traffic Safety

With continued physically demanding operational periods, expect and monitor fatigue of all crew members working in and around your division. Take the following steps to limit and address fatigue, and driver and traffic safety:

1. Follow work/rest guidelines.
2. Driving conditions and stopping distances will change when the roads are wet or muddy,
3. Extra caution should be taken during I/A response driving due to adrenaline and unfamiliarity with roads.
4. Stop, look and listen at **all** railroad crossings. The rail lines in this area are still active.
5. Use extra caution and be aware of cross traffic and pedestrian traffic when entering/exiting the ICP.
6. Beware of dusty and congested vehicle and pedestrian conditions in the ICP parking lots and sleeping areas.

Heat Related Illness and Hydration

- You need at least 1 liter of fluid per hour during hard work. This amounts to TWO gallons a day! Do this by drinking a small amount of fluid every 15 to 20 minutes.
- Of the fluids you drink, a 2 to 1 ratio of water to sports drink is recommended to keep your electrolytes up.
- It is recommended that you start drinking water the moment you wake up. It is also recommended that you keep a water bottle by your sleeping bag, and resolve to drink it the second you wake up in the morning. This will help prevent you from becoming dehydrated during your shift.
- After work, keep on drinking! Drink more than you think you need because it's essential to replace lost fluids.
- It doesn't matter if you choose to use a water bottle or a sipping hydration system such as a CamelBak (or a combo of both). Studies showed no differences in hydration status, so use whatever suits your fancy.

Personal Hygiene and Illness Prevention

With shared utilities such as sleeping quarters, restrooms and the chow hall, the chance of spreading illness and infection is a concern. Take the following steps to limit your exposure to illness or infection:


- Use handwashing stations routinely.
- Stay hydrated and well nourished.
- Get quality rest when possible.
- Avoid contact with social surfaces (handrails, doorknobs) without washing hands after.
- The use of hand sanitizer in the field before meals is recommended.
- The policy regarding the wearing of yellow or dirty Nomex shirts in the chow line is in effect.

Is the risk you're taking, worth the gain???



10. ATTEMPTING FRONTAL ASSAULT ON FIRE



DIV	HAZARDOUS ACTIONS / CONDITIONS	MITIGATIONS / WARNINGS / REMEDIES	
ALL	FIRE WEATHER	<ul style="list-style-type: none"> Winds increasing or changing direction. Weather becoming hotter and drier. Unstable atmosphere can promote rapid fire growth. 	
ALL	THUNDERSTORMS	<ul style="list-style-type: none"> Refer to IRPG page 21, Thunderstorm guidelines. Heads up for erratic winds and possible downdrafts. Follow the 30/30 rule. 	
ALL	SPOT FIRES	<ul style="list-style-type: none"> Size up prior to engagement. Watch for multiple spots. Ensure LCES is in place. Maintain Situational Awareness at all times. 	
ALL	DANGER TREES	<ul style="list-style-type: none"> Follow "Hazard Tree Safety" guidelines, IRPG pages 22. Post lookouts, or use a spotter in mop-up areas with personnel. Don't park vehicles or take breaks in high concentrations of hazard trees. Establish trigger points for disengagement during high wind events". 	
ALL	HEAT RELATED ILLNESS (HRI) & DEHYDRATION	<ul style="list-style-type: none"> Drink 2 to 1 ratio of water to sports drinks. Take frequent breaks, minimum of 10 minutes every hour. Recognize symptoms of HEAT RELATED ILLNESS which include; Lack of energy, headaches, dizziness, lack of rest, no hunger, poor eating habits, hot skin, and lack of sweating. 	
ALL	FIREFIGHTER FATIGUE	<ul style="list-style-type: none"> Follow work rest guidelines. Take breaks as needed. Stay hydrated and well nourished. Supervisors assess the fatigue levels of your crew members. 	
ALL	MOP UP	<ul style="list-style-type: none"> Conduct thorough briefing for all personnel (inside rear cover IRPG). Use all required PPE, including eye protection. Maintain proper spacing and overhead clearance. Be alert for stump holes and root cavities. Minimize exposure to smoke, and rotate personnel into clean air when practical. Evaluate unburned islands/Increase situational awareness. 	
ALL	TRAFFIC AND DRIVING	<ul style="list-style-type: none"> Practice "Defensive Driving" techniques. Use spotters when backing, always use headlights. Use warning lights when working on roads or traveling in smoke. Reduce speed when dusty, maintain adequate spacing with other vehicles. Some roads are dead end with poor turn around, scout roads first. Watch for livestock. 	
ALL	HEAVY EQUIPMENT OPERATIONS	<ul style="list-style-type: none"> Ensure communications are established with operators. Use hand signals if other communications are unavailable. Maintain a 50'-100' exclusion area around equipment. Use a spotter when backing. 	
ALL	AIR OPERATIONS	<ul style="list-style-type: none"> Follow Aviation" Watch-Out Situations" on page 44, IRPG. Don't plan on air resources for medical transport or resupply. Refer to page 57, IRPG for directing bucket drops. Ensure positive communications with all air resources. 	
INCIDENT NAME MODOC JULY COMPLEX ICS 215a		DATE PREPARED: August 6, 2017 TIME PREPARED: 1600 HOURS	OPERATIONAL PERIOD Day Shift 08/07/17 0600-1800 Prepared by: John Kraushaar 

MEDICAL PLAN ICS 206	1. INCIDENT NAME Modoc July Complex	2. DATE PREPARED August 6, 2017	3. TIME PREPARED 1700	4. OPERATIONAL PERIOD August 7, 2017 0600-1800
---------------------------------	---	--	------------------------------------	--

5. INCIDENT MEDICAL AID STATIONS			
MEDICAL AID STATIONS	LOCATION	PARAMEDICS	
		YES	NO
Frontline Medical	Modoc July Complex ICP	X	

A. AIR AMBULANCES				
NAME	LOCATION	PHONE	PARAMEDICS	
			YES	NO
SEMSA Air 2 – (Non Hoist) NVG Capable	Adin, CA 96006	Command to Communications	RN/PM	
REACH – (Non Hoist) NVG Capable	Redding, CA 96003	Command to Communications	RN/PM	
PHI Air Medical – (Non Hoist) NVG Capable (No Unimproved Helispot Landing)	Redding, CA 96003	Command to Communications	RN/PM	
CDF 202 – Hoist Capable No night Ops	Bieber CDF	Command to Communications		X

B. GROUND AMBULANCES					
NAME	LOCATION and PHONE NUMBER			PARAMEDICS	
	YES	NO		YES	NO
Mountain Medics (Incident Dedicated) "Ambulance 1"	DP – 72	(DIV K / M)	Command	X	
AMR Medic 838 (Incident Dedicated) "Ambulance 2"	DP – 21		Command	X	
Frontline (Incident Dedicated) "Ambulance 3"	DP - 48 / 49	(DIV UU / TT)	Command	X	

7. HOSPITALS								
NAME	ADDRESS	TRAVEL TIME		PHONE	HELIPAD		BURN CTR	
		AIR	GRND		YES	NO	YES	NO
Modoc Medical Center	228 W. McDowell Alturas, CA	15m	40m	(530) 233-7037	X			X
Mayers Memorial Hospital	43563 Hwy 299 East Fall River Mills, CA	20m	55m	(530) 336-7543	X			X
Rogue Regional Medical Center (Level 2 Trauma)	E. Barnett Rd Medford, OR	50m	2.5hrs	(541) 789-7132	X			X
Mercy Medical Center (Level 2 Trauma)	2175 Rosaline Ave Redding, CA	50m	2.5hrs	(530) 225-7201	X			X
UC Davis Medical Center (Level 1 Trauma)	2315 Stockton Blvd Sacramento, CA	1.5h	6h	(916) 734-5669 (916) 734-3636 Burn Center	X		X	

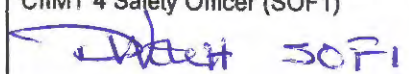
8. MEDICAL EMERGENCY PROCEDURES

LINE MEDICAL EMERGENCY:
 Crew Supervisor contact Division Supervisor/Operations with patient complaint, condition and location.
 Division Supervisor/Operations contacts Communication:

- Division Supervisor/Operations to use "injury or incident communication protocol" on next page
- Division Supervisor/Operations will run medical emergency on command channel
- Communications will contact the Medical Unit Leader on Command channel.
- Medical Unit Leader will:
 1. Have communications dispatch ground/air transport resources
 2. Notify receiving hospital of injury status.
 3. Develop primary and contingency transport plan
 4. Notify Incident Commander, Safety, Logistics and Operations

CAMP MEDICAL EMERGENCY:
 Contact Communications with patient complaint/condition and location, via LOGs Net

- Medical Unit contacts:
 - Safety
 - Logistics
 - Operations
- Medical Unit Leader will:
 1. Contact Communications to dispatch ground/air transport resources
 2. Notify receiving hospital of injury status
 3. Develop primary and contingency transport plan

206 ICS	9. PREPARED BY: (Medical Unit Leader) Doug Stuart (MEDL) Jeff Brooks MEDL(T) Chris Schilling MEDL(T)	10. REVIEWED BY: (Safety Officer) CIIMT 4 Safety Officer (SOF1) 	
----------------	---	--	---

Injury or Incident Communications Protocol

DECLARE: Medical Emergency or Non-emergency Medical transport

Best transport method: (circle) Ambulance Helicopter Vehicle

Location: (Div. & Lat / Long) _____

GPS Format: WGS84 Degrees, Decimal, Minutes

Situation _____

Any special equipment required _____

Number of injured _____ Type of injuries _____

Closest pick up point (DP, Helispot) _____

Level of consciousness _____ Resp. _____ Pulse _____ BP _____ Weight _____
(alert & oriented x 1-4)

Injury _____ Agency (No Names) _____

Medical History/Allergies _____

Air Transportation Triage

	<i>Ground or Air Ambulance to Hosp.</i>	<i>Transport to Med Unit</i>
<i>Mechanism</i>	<i>Hit by a falling tree or large branch Fall of 10' or more Insect bite with shortness of breath Signs of heat stroke (hot, dry, disoriented) Burn Injury greater than 1% body area</i>	<i>Minor dehydration Cut or laceration with bleeding controlled Minor bites and Stings Minor burns</i>
<i>Area Injured</i>	<i>Significant Blunt or Penetrating Trauma to Head, Neck, Chest, Abdomen or pelvis Any Arm or Leg fracture above the joint</i>	<i>Minor blunt trauma Minor penetrating trauma Extremity sprains and strains Simple fracture below elbow or knee</i>
<i>Symptoms</i>	<i>Disoriented Chest Pain or Shortness of Breath Weak or absent radial pulse Pale, cold and sweating</i>	<i>Alert and oriented No shortness of breath Good pulses</i>

If air or ground ambulance is DELAYED:

Package and transport patient to rendezvous with ambulance. Re-route EMS helicopter to rendezvous point as appropriate.

If Declaring an "Incident within the Incident"

The closest DIVS will respond to manage the incident. They are responsible for giving an accurate size up, ensuring scene safety, setting priorities and initiating an appropriate response.
The closest Safety Officer and Line EMS will respond to the scene to assist the Branch Director or DIVS. Secure site and begin initial investigation when situation is stabilized.

FIRE SUPPRESSION REPAIR PLAN

Guidelines for dozer lines, hand lines, helispots, spike camps, drop points, water sources and safety zones:

Note: Where there is more rock than soil on control lines with slopes 5% or greater, waterbars are not needed as long as the non burnable debris on the line will dissipate the water enough to prevent channeling.

Stage 1) Soil and rocks will be put back on control lines and spread. Waterbarring will be completed where appropriate. No burnable material will be placed on the direct control lines.

Stage 2) In addition to stage 1 burnable material/debris will be placed on the lines and spread. Pull slash and downed trees over dozer line to reduce erosion and prevent unauthorized vehicular use.

Contingency line will be repaired as stage 2.

Obliterate any berms from the outside edge of existing fireline. Work material back onto the line. Do not sidecast berm material into or near stream channels.

Restore Forest roads to pre-fire suppression activities. Blade and grade travelway, remove berms, clean ditches and culvert inlets, chip roadside slash.

Repair fences damaged resulting from fire suppression activities.

Remove all improvised dams from drainages created for pumps and drafting. Area should be returned to pre fire suppression activities.

Water bars should be constructed at least 30 degrees perpendicular to the fireline. Make sure waterbars outlets are open.

Dozer/Hand line (% slope)	Maximum Distance Apart (feet)	
1- 5	200	Waterbars should be no further apart than this. When in doubt, put in more. Use only excavators for this work. Make sure waterbars outlets are open (often requires a little shovel work).
6 - 20	125	
21 - 40	60	
41 - 60	40	
>60	25	

Watercourses:

All slash, soil, and debris deposited into watercourses resulting from fire suppression activities shall be removed and stabilized.

Concentrations of Green Timber

Areas that have concentrations of fallen or pushed over trees (not juniper) will need to be addressed. Trees over 10" DBH should have the root wad removed at the base and the tree placed with others in an organized fashion. All of the butts of the trees even, stacked on top of each other so that there 4-6 trees in a bundle. If possible the bundles will be parallel to the road and not overlapping.

Trees less than 10" DBH and root wads should be handled as slash/debris and used for covering dozer line to prevent vehicular travel and reduce erosion.

STANDARD OPERATING PROCEDURES—FINANCE SECTION
16 HOURS IS NOT A GUARANTEE - IT IS HOURS WORKED!!

WORK REST CYCLE

IT IS NATIONAL DIRECTION TO MEET 2 TO 1 WORK/REST RATIO (1 hour of sleep/rest for every 2 hours of work). Every effort shall be made to manage work hours so you don't exceed the maximum of 16 hrs. Work hours exceeding 16 hours shall be approved by your supervisor in advance, and a justification/mitigation form completed for review by Section Chief & approved by IC. It is each person's responsibility to comply with this direction to manage for fatigue and safety.

OPERATIONAL SHIFTS

Pay status for assigned overhead and crews on the fireline will not start prior to the posted briefing time and will terminate on arrival back in camp (except for debriefing—additional hours may be accrued by those required to attend debriefing). Supervisors will be allowed ½ hour prior to briefing and after return to camp to ready crew and equipment.

DUTY STATUS

Division/Group supervisors and Unit Leaders are responsible for establishing on and off duty status. The objective is a 2 to 1 work/rest ratio. Personnel will normally work, travel, and/or be placed on ORDERED standby 8 to 16 hours per day and be off duty 8 hours or more (breaks count towards 8 hrs). Off duty time will be in a non-pay status. Each federal employee is guaranteed **at least 8 hours** of pay status each 24-hour period (midnight to midnight) unless it is the first or last day of an assignment or stated otherwise in a contract or agreement.

PERSONNEL/EQUIPMENT TIME REPORTING

Personnel time will be reported to the Time Unit and daily once they are signed by the next level supervisor. OES resources will be monitored by OES Agency Rep (if assigned) for 2/1 Work Rest compliance. Situations entitling you to HAZARD PAY are to be noted in remarks (ie. HP=Uncontrolled Fireline, hovering hookups, low level flights, etc.)

Private Contracted Equipment time must be tracked on a Shift Ticket daily and hours on shift noted even if it is a daily rate. When swapping out operators you need to notify Finance as well as changing from single to double shift and vice versa.

Supervisor's - If you are responsible for daily tracking of equipment or personnel, please ensure you understand the agreement, and follow the rules provided in this document. Do not sign documents for resources you did not manage unless you have knowledge of their assignment hours.

MEAL AND OTHER WORK BREAKS

Compensable meal periods are the exception, not the rule (5 CFR 551.411 © and 29 CFR 785.19(a)). **Until the fire is controlled**, personnel on the fireline **MAY BE** compensated for meal periods if all of the following conditions are met: 1) The fire is not controlled and 2) The Operations Section Chief makes a decision that it is critical to the effort of controlling the fire that personnel remain at their post of duty and continue to work as they eat, and 3) The compensable meal break is approved by the supervisor at the next level and documented on CTR. For personnel in support positions, and fireline personnel **after control** of a fire, a meal period of at least 30 minutes must be ordered and taken for each work shift of eight hours or more. In those situations where personnel cannot be relieved from work and must remain at a post of duty, a meal period may be counted as time worked, which will be compensable. **If breaks are NOT able to be taken, CTR should have a statement in remarks explaining the situation. Kitchen closes at 2200 so show dinner break unless you went off clock by 2130.**



STRESS REMINDERS

- Take action, don't ignore your stress
- Stay in touch with team members and communicate
- Talk and share feelings
- Replenish, rest, get some down time

Stress is normal and everyone has it

**PRACTICE RANDOM ACTS OF KINDNESS!
IT WILL MAKE ANOTHER PERSON'S DAY!
IT WILL MAKE YOUR DAY!**

Dana Simpson

661.477.4862

John Bohmer (t)

707.410.7936

TRAINING SPECIALIST MESSAGE

ALL TRAINEES

**Please remember to stop by and close out
your training assignment prior to DEMOB
with the
Training Specialist.**

***Please bring the following documents
filled out and signed by you
and your Trainer.***

- **A completed and signed ICS 225 or 226
Performance Evaluation**
- **Your Position Taskbook**

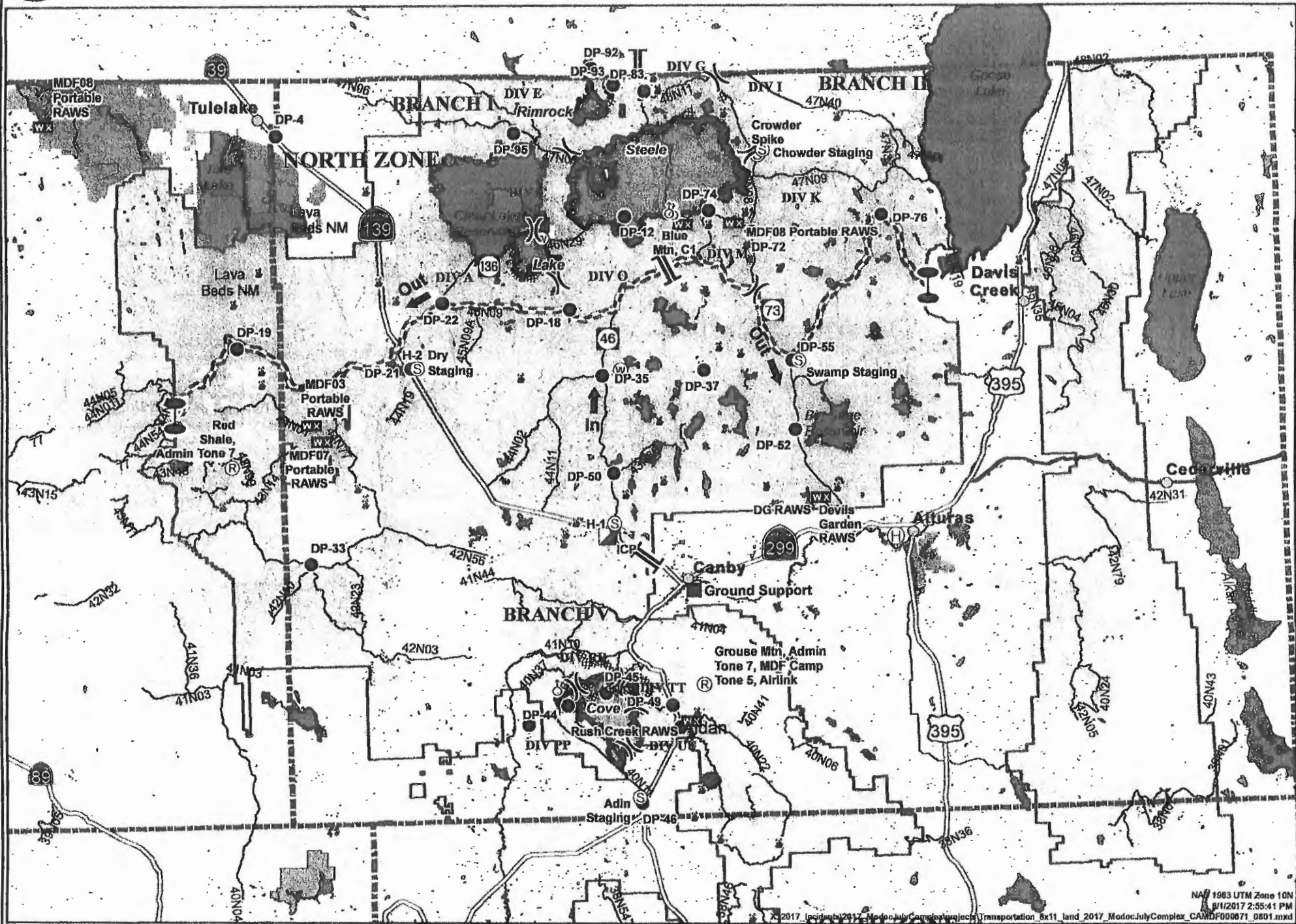
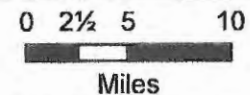
***Incident Personnel Performance Rating Forms
are available at the TNSP***

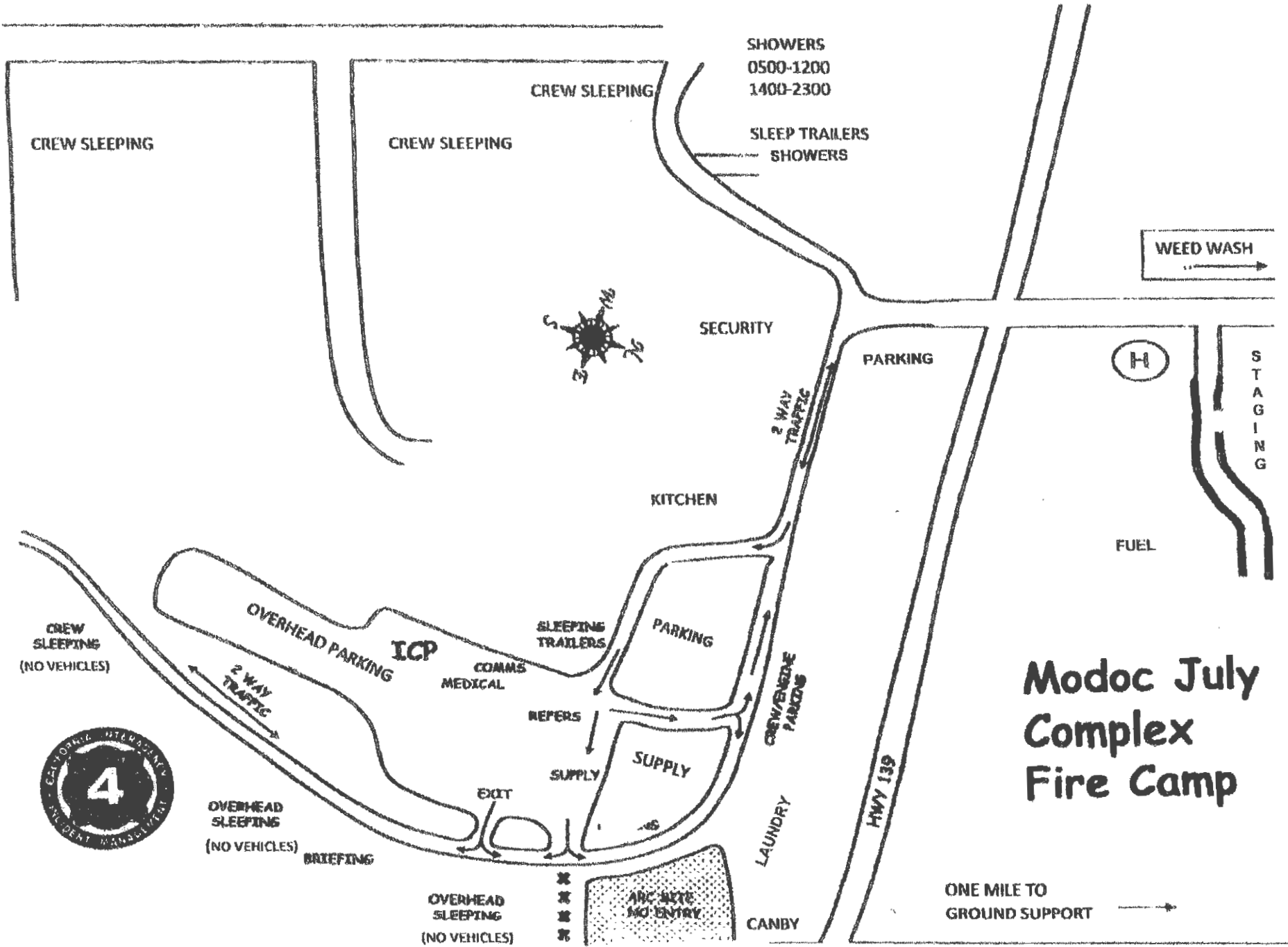
Tom Reaves

***August 7, 2017
Day Operational Period***



**MODOC JULY COMPLEX CA-MDF-000671
TRANSPORTATION MAP
AUGUST 1, 2017**





Modoc July Complex Fire Camp

DIVISION FIRELINE ORDER FORM

Date & Time Order Was Placed	Order #/DIV	Mode of Delivery	Location of Delivery		
Current Date & Time:		<input type="checkbox"/> GROUND SUPPORT	DIV, DP, LZ, or Lat/Long		
Needed by:		<input type="checkbox"/> PICK UP IN SUPPLY			
		<input type="checkbox"/> HELO			
Order received in COMM by:			Time:		
Order received in SUPPLY by:			Time:		
Order Shipped by TRANS or PU In Supply:			Time:		
PLEASE ORDER BY ITEM NUMBER					
<p>*Hose Kit A, contains the following: 10 RO 1½" Hose; 10 RO 1" Hose; 10 EA 1½" Gated Wyes; 10 EA 1½" to 1" Reducers; 10 EA 1" Nozzles</p>					
Item	Item	Quantity	Item	Item	Quantity
1	*Hose Kit A, 1000' Hoselay		28	Fusee, BX	
2	Hose, 1½", 100'		29	Batteries, AA, PG (24 PG/BX)	
3	Hose, 1", 100'		30	Ribbon, Flagging (Specify Color)	
4	Hose, Garden ¾", 50'		31	Shovel	
5	Nozzle, KK Type, 1½"		32	Pulaski	
6	Nozzle, KK Type, 1"		33	Combi-Tool	
7	Nozzle, Forester, 1"		34	McCloud	
8	Nozzle, Garden ¾"		35	Washcloth, waterless, cleansing	
9	Wye, Gated 1½"		36	Sprinkler Kit	
10	Wye, Gated 1"		37	Mop-Up Kit, 3-wand	
11	Wye, Gated ¾"		38	Chainsaw Kit (TRACKABLE)	
12	Inline Tee, 1½"x1"		39	Water, Cubies	
13	Reducer, 1½"x1"		40	Water, Bottled, Cases	
14	Reducer, 1"x¾"		41	Gatorade, Bottled/Cases	
15	Shut-off Valve, ¾"		42	MRE's (12/BX)	
16	Foam, 5 GL		ADD ANYTHING NOT LISTED		
17	Backpack Pump				
18	Pumpkin, 1500/3000/6000 GL				
19	Folding Tank, 1000/1500 GL				
PUMP KITS					
20	Lightweight (TRACKABLE)				
21	Mark III (TRACKABLE)		ACCOUNTABILITY PROPERTY #'S		
22	Fuel, Unleaded, 5 GL Can				
23	Fuel, Drip Torch, 5 GL Can				
24	Fuel, Diesel, 5 GL Can				
25	2-Cycle Oil, PT				
26	Bar Oil, QT				
27	Drip Torch, EA				
SPECIAL NOTES					

FIRE REPLACEMENT PROCEDURES

Submit requests for all incident replacements on a 213, General Message:

- Separate cache from non-cache items on separate 213's!
- Include explanation for lost or damaged items.
- Include DIVS signature on the 213 to verify the item(s) has/have been lost or damaged and support the circumstances surrounding it.
- For stolen items, contact your supervisor and Security Manager as soon as practical.

FOR CACHE ITEMS

Requesting Resource is NOT Being Demobed and Requested Items ARE Available in Supply:

- R&D shall fill request and note on the 213.

Requesting Resource is NOT Being Demobed and Requested Items are NOT Available in Supply.

- The Supply Unit will place an order for the requested items through the regular cache order process on the incident. The order will be shipped to the incident and replacement will take place at the Supply Unit and noted on the 213.

Requesting Resource IS Being Demobed and Requested CACHE Items are NOT in Stock in Supply:

- Along with the 213, complete an *OF-315, Incident Replacement Requisition* for cache items only and take to SPUL for review and approval. Include the requesting resources' email on the form so the Resource Order can be emailed to the Requesting Resource.
- The SPUL will issue S#'s pending receipt and verification of proper documentation for cache items.

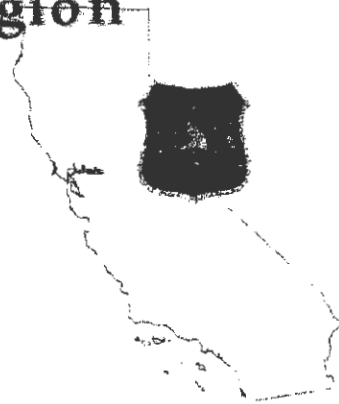
NON-CACHE Items – This is the Important Part!!!

Non-Cache items include any item not available through the National Cache System.

Lost, damage, or destroyed government non-cache property shall be reported to the appropriate DIVS or higher-level overhead within 24 hours of occurrence. Stolen property shall be reported to the Security Manager. The requesting resource shall complete a 213 and *OF-289, Property Loss and Damage Report – Fire Suppression*, and include the following:

- All witnesses shall document the facts and circumstances of the loss or damage on the OF-289. Use additional paper if needed. Explanations shall be detailed and thorough.
- The requesting resource will take the 213 and OF-289 to the Comp/Claims Unit Leader (COMP) for review. The COMP will make a determination based up on the documentation presented and other information provided by the requesting resource.
- Approval for replacement is the responsibility of the incident agency and may be delegated to the Incident Management Team.
- If the replacement request is approved, the replacement cost will be limited to cache equivalent value. This value will be reflected on the Resource Order.
- Items that do not have a like-item in the cache will be reviewed and approved at the discretion of the FSC or Incident Business Advisor, as delegated by the Agency Administrator.

USDA Forest Service Pacific Southwest Region



Outreach Notice Modoc National Forest

2017 Fall Centralized Fire Hire Numerous Fire Positions

The Modoc National Forest will soon be filling Numerous Fire Positions (listed in the table below), with duty locations of Alturas, Adin, Canby, Cedarville and Tulelake, California. This notification is being circulated to inform prospective and interested applicants of this upcoming opportunity. Please see the following information on the positions and the Modoc National Forest.

Announcements for these positions will open on August 11, 2017

To apply for any of these positions:

- 1) Go to USAJOBS (must set up and have a USAJOBS profile) <https://www.usajobs.gov/>
 - a. Search/locate the announcement number;
 - b. Select position(s) and location(s) you are interested in and begin the application process.
- 2) Complete and submit your application prior to 8:59 Pacific Time or 11:59 p.m. Eastern Time August 25, 2017 at 20:59 Pacific Standard Time
- 3) All announcements flown under Merit authority will **also** be advertised using the Land Management Workforce Flexibility Act (LMWFA) for eligible applicants. So along with Forest Service-wide applicants already in career or career-conditional appointments, temporary employees who meet the LMWFA eligibility requirements may also apply to the merit announcement. Additional information and requirements on LMWFA can be found by going to the HRM LMWFA website at <http://fsweb.asc.fs.fed.us/HRM/employment/LMWFA.php>

Candidates are encouraged to read the announcement thoroughly to ensure you are applying to the correct announcement, as some position titles appear similar. Applicants will need to attach any required supporting documents (IQCS Master Record, DD-214, etc.)

The following positions are the known vacancies:

Position	REGIONAL GROUP ANNOUNCEMENT NUMBERS G will be for Merit & DP will be for Demo positions.	Duty Location
Engineering Equipment Operator/Fire Dozer	17-FIREFALL-EQOPTR-10G & DP	Adin
Forestry Technician Fire Engine Operator (FEO) GS-0462-07	17-FIREFALL-FEO(H)-7G	Alturas
Lead Forestry Technician Assistant Fire Engine Operator (AFEO)	17-FIREFALL-AFEO-6G & DP	Alturas
Supervisory Forestry Technician/Asst Superintendent	17-FIREFALL-IHCASST-78G	Canby
Frsty Aid GS-03, Forestry Techncn GS-4/5	17-FIREFALL-WFAP-5G & 17-FIREFALL-WFAP-345DP	Adin, Alturas, Canby, Cedarville, Tulelake

Candidates are encouraged to apply to any position/location on the Forest, whether a vacancy exists or not. Positions that become vacant during this process may also be filled immediately through a "back filling" process.

**Modoc July Complex
3 Day Tentative DMOB**

PLEASE ARRIVE TO DMOB AT SCHEDULED TIME

REMINDER ALL AIR TRAVEL GIVE DMOB 48 HOUR NOTICE

REQ #	RESOURCE NAME	KIND	DEMOB DATE	TENTATIVE RELEASE TIME
-------	---------------	------	------------	---------------------------

8/7/2017

C-12	CRW 2IA DROMEDARY	HC2I	08/07/2017	6:00
C-18	CRW2IA FORT APACHE 1	HC2I	08/07/2017	6:00
C-30	CRW2IA BEAR JAW AZ HIG	HC2I	08/07/2017	6:00
C-38	CRW2IA RETURNING HEROES RED	HC2I	08/07/2017	6:00
E-214	WTT2 TAC LNF 1	WTT2	08/07/2017	6:00
O-242	TRIPP, JAMIE L	DIVS	08/07/2017	6:00
O-338	KEOWN, JACOB	DIVS	08/07/2017	6:30
C-16	CRW 1 BIG BEAR IHC	HC1	08/07/2017	6:30
E-158	ENG3 S/T 6604C	ES3	08/07/2017	6:30
O-65	FLEISHMAN, RICHARD K	PIO2	08/07/2017	6:30
C-23	CRW1S/T 9220G	HCS1	08/07/2017	7:00
C-43	CRW1 S/T 9222G	HCS1	08/07/2017	7:30
E-101	ENG3 S/T 9221C	ES3	08/07/2017	7:30
E-99	DOZ2 WHITE BEAR	DOZ2	08/07/2017	8:00
O-20009	MALOTTE, LEWIS	GMEC	08/07/2017	8:00
O-420	SMITH, STEVE	GMEC	08/07/2017	8:00
O-20008	MCYNTIRE, DARREN	GMEC	08/07/2017	8:00
E-275	DOZ2 OILER	DOZ2	08/07/2017	8:00
E-216	TENT - T3 - EXPEDITORS - R MICC - 1935	TENT	08/07/2017	8:30
E-220	HANDWASHING STATION- FISHER PRICE -	HNDW	08/07/2017	8:30
E-221	HANDWASHING STATION- DIETZ EQUIPMENT	HNDW	08/07/2017	8:30

8/8/2017

C-1	CRW 2IA MESCALERO	HC2I	08/08/2017	6:00
C-4	CRW1 BECKWOURTH IHC	HC1	08/08/2017	6:00
C-6	CRW CAMP NAPA 5	CC	08/08/2017	6:00
C-28	CRW 2IA KLAMATH 14	HC2I	08/08/2017	6:00
E-7	DOZ2 BOB W BUSHEY 1	DOZ2	08/08/2017	6:30
E-8	DOZ2 BOB W BUSHEY 4	DOZ2	08/08/2017	6:30
E-11	ENG3 MNF 364	ENG3	08/08/2017	6:30
E-15	WTS2 LARRANAGA	WTS2	08/08/2017	6:30
E-62	WTS2 - NORTHSTATE	WTS2	08/08/2017	7:00
E-178	TRUCK - SERVICE - MECHANIC - HEAVY EQUIPMENT - T1 - MO	MEC	08/08/2017	7:00
O-143	MORLOCK, JOHN	SOFR	08/08/2017	7:00
E-107	ENG6 I.A.R. 9 (GREY WOLF 9)	ENG6	08/08/2017	7:00
O-455	IDOL, BRADLEY H	HECM	08/08/2017	7:00

