

INCIDENT ACTION PLAN

MODOC JULY COMPLEX

CA-MDF-000671 P5K7YC (0509)



DAY SHIFT OPERATIONAL PERIOD

FRIDAY
AUGUST 11, 2017
0600-1800 HOURS

MAPS



INCIDENT OBJECTIVES (ICS 202)

1. Incident Name:	2. Operational Period: DAY	
MODOC JULY COMPLEX	Date/Time From: 08/11/2017 0600 FRI	Date/Time To: 08/11/2017 1800 FRI
3. Objective(s):		
<u>Management Objectives:</u>		
<ul style="list-style-type: none"> • Provide for the safety of all responders by utilizing national Risk Management Standards and the implementation of appropriate mitigations. • Share critical information affecting public safety so timely decisions and actions can be implemented. • Reduce firefighter exposure by only engaging fire assignments with the highest probability of success. • Provide initial attack response within the area identified by the Delegation of Authority. • Engage cooperators and stakeholders to jointly provide for the defense of communities, infrastructure and economic interests. • Utilize local resource specialists to identify and protect sensitive sites and cultural resource values by minimizing impacts from suppression operations. • Maintain and enhance Community, County, State, National Forest and Stakeholder relationships through accurate and timely dissemination of information. • Identify, assess and implement suppression repair needs, where appropriate, in coordination with the Resource Advisor following agency policy. • Manage incident costs effectively for the values at risk through regular and ongoing cost analysis. 		
<u>Control Objectives:</u>		
<ul style="list-style-type: none"> • Keep Cove and Steele fires within current containment lines. 		
4. Operational Period Command Emphasis:		
<u>Primary:</u>		
Using a full suppression strategy, minimize the size of the fires through the use of direct attack where safe to do so.		
<u>Alternate:</u>		
When not feasible or safe to go direct use indirect attack to minimize fire size.		
<u>Contingency:</u>		
Use indirect attack tactics at major roads and natural barriers to suppress fire & minimize firefighter exposure to extreme fire behavior.		
<u>Emergency:</u>		
Withdraw fire personnel to safety zones or ICP, ensure accountability for all personnel & reevaluate how to safely advance to suppress the fire.		
General Situational Awareness:		
<ul style="list-style-type: none"> • Fuels are responding to a drying trend reflected by mid-single digit 10 hour fuel stick readings • Isolated thunderstorms still pose a threat of adverse fire behavior from outflow winds • Recognize complacency, keep situational awareness current 		
5. Site Safety Plan Required? Yes <input type="checkbox"/> No <input checked="" type="checkbox"/>		
Approved Site Safety Plan(s) Located at:		
6. Incident Action Plan (the items checked below are included in this Incident Action Plan):		
<input checked="" type="checkbox"/> ICS 202 <input checked="" type="checkbox"/> ICS 203 <input checked="" type="checkbox"/> ICS 204 <input checked="" type="checkbox"/> ICS 205 <input type="checkbox"/> ICS 205A <input checked="" type="checkbox"/> ICS 206	<input type="checkbox"/> ICS 207 <input type="checkbox"/> ICS 208 <input type="checkbox"/> ICS 220 <input checked="" type="checkbox"/> Map/Chart <input checked="" type="checkbox"/> Weather Forecast/Tides/Currents	Other Attachments: <input checked="" type="checkbox"/> DEMOB LIST <input checked="" type="checkbox"/> SUPPRESSION REPAIR GUIDE <input checked="" type="checkbox"/> SAFETY MESSAGE <input checked="" type="checkbox"/> TRAINING SPECIALIST MESSAGE
7. Prepared by: DAVE GERBOTH	Position/Title: PSC1	Signature: 
8. Approved by Incident Commander:	Name: JAY KURTH	Signature: 
ICS 202	IAP Page	Date/Time: 08/10/2017 2200

ORGANIZATION ASSIGNMENT LIST			Training Specialist	Tom Reaves
1. Incident Name Modoc July Complex			READ	Peter Hall
2. Date Prepared 08/10/2017	3. Time 2200		8. Logistics Section	
4. Operational Period 08/11/17 0600-1800			Chief	Ross Peckinpah / Cheryl Raines
Position	Name		Comm Unit	Sal Bonilla / Nicholas Luby
5. Incident Commander and Staff			Medical Unit	E. Williams / D. Stuart / J. Brooks (T) / C. Schilling (T)
IC	Jay Kurth / Marty Adell (T)		Food Unit	Mike Kinne / Kenneth Breskin / Sue Zahn (T)
Deputy IC	Rocky W. Opliger		Facilities Unit	Robert Griffith
Safety Officer	John Kraushaar / Dave Welch		Supply Unit	Teresa Stelman / Jamie Copple
Information Officer	S. Collins / F. Mosbacher / C. Prescott (T)		Security Manager	Luke Johnson
Human Resources	Dana Simpson / John Bohmer (T)		Ground Support	Ron Brewer / Jeff Burch
Liaison	Sam Wilbanks / Steve Anderson (T)		9. Operations Section	
6. Agency Representatives			Chief North Zone	Brian Rhodes
Agency	Name		Chief South Zone	Pat Titus
MDF Agency Administrator	Deedee Harrison / Matthew Bokach (T)		Planning OPS	Jake Cagle / Ken Gregor (T)
MDF Agency Administrator Rep.	Chris Christopherson		a. Branch II (North Zone)	
CALFIRE Agency Administrator LMU	Don Gordon		Branch Director	Mike Tucker / Belinda Plummer (T)
Oregon Dept. Forestry	Ron Zilli		Division A / C / E / O	Mike Good / Bill Schlaich (T)
Lava Beds NM	Larry Whalon		Division G / I	Nick Bunch / Mitch Silvester (T)
U.S. Fish and Wildlife	Ken Griggs / Greg Austin		Division K / M	Brandon Woodward / Deborah Flowers (T)
California Highway Patrol	Danny Koetsier		North Road Group	Ronald Rockis
Tribal Representative	Ken Sandusky		b. Branch V (South Zone)	
Fremont- Winema NF / Lakeview District BLM	Bary Shullanberger		Branch Director	Dave Pereira
Modoc County OES	A.J. McQuirrie		PP / UU	Kelly Cornwall / Don Shoemaker (T)
Modoc County Sheriff	Mike Poindexter / William "Tex" Dowdy		RR / TT	Erik Johnson / Ted King (T)
Northern CA Fire Cooperative Assoc.	Darin Quigley		South Road Group	Kirby Henningsen
California Conservation Corps	Ben Herbert		c. Suppression Repair Branch	
BNSF Railroad	Joe Aho		Branch Director	Brett Waters
PG&E	Mike Weaver		North Suppression Repair	Harold Kibbe
Collins Pine	Lee Fledderjohann		South Suppression Repair	Drew Graham / Mark Mott
Cal OES Agency Administrator Rep.	John Salvate		d. IA Branch	
7. Planning Section			Branch Director	Steve Murphy / James Burton (T)
Chief	Dave Gerboth / Ann Marx (T)		North IA	Chris Orr / Rob DeCamp (T)
Deputy Chief	Mitch Diehl		South IA	Mike Crites / Josh Osteen (T)
Resources Unit	G. Bald / J. Camacho (T) / J. Ramirez(T) / B. Lavelle(T) / S. Arjonilla(T)		e. Staging	
Situation Unit	M. Hoose / D. Guilliani / B. Dethlefs / J. Erickson (T) / A. Grove (T)		Staging	Robin Ace
FBAN	Brendan Ripley / Diondray Wiley (T)		f. Air Operations Branch	
IMET	Ryan Walbrun / Jimmy Taeger (T)		Air OPS Branch Director	Ty Miller
Incident Technology Support Specialist	James Whiteside / Mike Laxo (T)		Air Tactical Supervisor	Gary Monday
GISS	C. Clervi / C. Barrett / M. Eister		Air Support Supervisor	James Stratton
Documentation Unit	LaNette Estes (T)		Helibase Manager	Brad Nelson
Demob Unit	Wayne Barney / Joe Scuri (T)		10. Finance Section	
			Finance Section Chief	Judy Reynolds
			Time Unit	Loni Holt / Sheila Miner
			Procurement Unit	Donald Tinsley
			Cost	Vicki Wilson
			Comps / Claims Unit	Scott Parsons / Mandi Heltman
			Prepared By: Gina Bald, RESL	



Modoc July Complex Fire Weather Forecast



FORECAST NO: 28

NAME OF FIRE: Modoc July Complex

PREDICTION FOR: 0600-1800 Day shift

UNIT: CA-MDF

SHIFT DATE: 8/11/17

SIGNED: 

TIME AND DATE

Incident Meteorologist Trainee: Jimmy Taeger

FORECAST ISSUED: 2200 hours on 8/10

WEATHER DISCUSSION: Drier conditions are expected on Friday; however, an isolated afternoon/evening thunderstorm is possible across the area. Where a storm develops, cloud-to-ground lightning, gusty outflow winds and small hail are possible. Highs Friday will be in the 80s, with relative humidity around 20%. Gusty West to Southwest winds near 20 mph are expected over the weekend.

*****Thunderstorms imply the possibility of gusty and erratic winds*****

WEATHER FORECAST FOR TODAY:

WEATHER: Partly cloudy. Isolated thunderstorms in the afternoon and evening, with storms first developing around 1500 and ending around 2000.

HIGH TEMPERATURES: 80-88. Little change.

HUMIDITY: Around 20%. Little change.

20 FT WINDS:

RIDGE: COVE – South 4-6 mph 0600-1400, then West 5-8 mph with gusts to 12 mph from 1400-2000.

RIDGE: STEELE – Northeast 3-5 mph 0600-1400, then West-Southwest 5-8 mph with gusts to 15 mph from 1400-2000.

SLOPE/VALLEY – Upslope 2-5 mph. Gusts to 8 mph from 1200-1900.

HAINES INDEX: 4

LAL: 2

STABILITY/INVERSION: Moderate morning inversion becoming unstable after 1300.

FRIDAY NIGHT: Any thunderstorms will dissipate by 2200, and then skies become partly cloudy overnight. RH recovery will be 40-60%, with lows 53-62. Light and downslope winds after midnight.

SATURDAY THROUGH MONDAY: Dry this weekend into early next week, with gusty West to Southwest winds of 20 mph Saturday and Sunday afternoons and evenings. High lowering into the 70s by Monday, and minimum relative humidity of 20-25% in the afternoons. Haines of 5 on Saturday.

SAFETY INFORMATION: Keep an ear to the radio for weather updates, and seek shelter from lightning if a storm approaches Friday. The fire weather threats switch this weekend from thunderstorms to gusty Westerly winds and a higher Haines index.

FIRE BEHAVIOR FORECAST

FORECAST NUMBER: 030

TYPE OF FIRE: Wildfire Full Suppression

FIRE NAME: Modoc July Complex

OPERATIONAL PERIOD: Day Shift Friday day 8/11/2017

DATE ISSUED: 08/10/2017

TIME ISSUED: 2100

UNIT: CA-MDF-000671 P5K7YC

SIGNED: Brendan "Rip" Ripley (FBAN) 

INPUTS

WEATHER SUMMARY:

***** WIND SCHEDULE *****

Steele Fire: 0600 - 1400 NE 3-5mph....1400-2000 WSW 5-8mph G15

Cove Fire: 0600 - 1400 S 4-6mph....1400-2000 W 5-8mph G15

Slope/Valley: 0600 Light Winds....1200-1900 Upslope/valley 2-5mph G8

Note: Outflow winds (30 mph possible) from isolated thunderstorms could come from any direction at any time storms are present.

(See attached weather forecast for specific weather information)

OUTPUTS

FIRE BEHAVIOR

GENERAL: Fuels have significantly dried due to the weather patterns over the Initial Attack Response Area (IARA) over the past two days. Both Wednesday and Thursday were mostly dry with clear skies during the day, however a late afternoon thunderstorm brought wetting rains and at least 50 cloud to ground lightning strikes along the county line and "Gasoline Alley". A similar scenario happened on Monday when 60 lightning strikes occurred over the area followed by 12 IA responses on Tuesday. Due to the dry receptive fuel bed associated with the "Gasoline Alley", hold over fires should be expected today.

LOCAL THRESHOLDS – WATCH OUT

Combinations of any of these factors can greatly increase fire behavior:

Thresholds: **20' winds** over 5 mph **RH** less than 20% **Temp** over 90° **ERC** over 64 **BI** over 51

Forecasted: **20' winds** 15mph **RH** 20% **Temp** 80-88° **ERC** 60 **BI** 37-50

Probability of Ignition: 50% Shaded.....80% Unshaded

SPECIFIC:

North Zone & Steele Fire: 10hr moisture trend – Max. 10hr fuel moisture started at 14% and dried to 3%. Critical value of 7% was attained by 1100hrs.

South Zone & Cove Fire: 10hr moisture trend – Max. 10hr fuel moisture started at 10% and dried to 5%. Critical value of 7% was attained by 1230hrs.

IA "Gasoline Alley": 10hr moisture trend – Late afternoon wetting rains ranged from 1/2" – 3/4" over the area. 10hr fuels at 2100hrs ranged from 18-26%. This morning they range from _____ - _____.

THREATS

#1- Holdovers..... Monday we had 60 lightning strikes. Wednesday we had 30-40 strikes. Last night we had 50 strikes. Junipers can harbor holdover heat for days following a strike. The potential remains for additions fires due to holdovers.

#2- Additional Starts from isolated thunderstorms.

#3- NE area of the Steele Fire.... WSW winds return to the Steele fire in the afternoon. Fuels just outside the line are extremely receptive to ignition.

AIR OPERATIONS:

VFR conditions are expected throughout the operational period

SAFETY

Pay attention to transition boundaries where fires burn out of the areas exposed to wetting rains into dryer fuels. Fire behavior along those boundaries has the potential to increase in intensity as the dryer fuels are encountered. Remember "Gasoline Alley" is known for having extremely dry unique burning conditions.

NORTH ZONE

Division/Group Assignment List (ICS 204 WF)

1. Incident Name:				3.		
MODOC JULY COMPLEX				Branch: II NORTH		Division/Group: A / C / E / O
2. Operational Period: DAY						
Date/Time From: 08/11/2017 0600 FRI		Date/Time To: 08/11/2017 1800 FRI				
4. Operations Personnel						
OPERATIONS CHIEF		BRIAN RHODES		DIVISION/GROUP SUPERVISOR		MIKE GOOD BILL SCHLAICH (T)
BRANCH DIRECTOR		MIKE TUCKER BELINDA J PLUMMER (T)		AIR TACTICAL GROUP SUPERVISOR		GARY MONDAY
5. Resources Assigned this Period						
Strike Team / Task Force / Resource Designator		LWD	Leader	Number Persons	Drop Off PT./Time	Pick Up PT./Time
ENG6 FIRESTORM 9903 E-86		08/15	TOBY BEHR	3	ICP/0600	ICP/1800
ENG6 FIRESTORM #9905 E-87		08/15	SAM PEARCE	3	ICP/0600	ICP/1800
FEMP O-280		08/13	ANTHONY D RIVAS	1	ICP/0600	ICP/1800
FEMP O-462		08/16	ROBERT WEIST	1	ICP/0600	ICP/1800
SOFR O-197		08/12	JOHN NOBLES	1	ICP/0600	ICP/1800
6. Control Operations/Work Assignments:						
<ul style="list-style-type: none"> • Utilize appropriate suppression actions to keep fire within current containment lines. 						
7. Special Instructions:						
<ul style="list-style-type: none"> • Track water usage and turn into Finance. • Provide location of accountable property and dozer lines and turn into Situation Unit. • Back haul trash. • Follow traffic plan: On coming shift resources take 46 Road. • Any suppression repair must be cleared through the Suppression Repair Branch. • CHECK COMM PLAN. • SELECT APPROPRIATE COMMAND CHANNEL BASED ON FIRE LOCATION. 						
8. Division/Group Communication Summary						
Function	Channel	RX Frequency N/W	RX Tone/NAC	TX Frequency N/W	TX Tone/NAC	Mode
COMMAND	3	168.7000N	0.0	170.9750 N	110.9	A
TACTICAL	6	168.0500 N	110.9	168.0500 N	110.9	A
AIR TO GROUND CMD	13	169.0875 N	0.0	169.0875 N	0.0	A
AIR TO GROUND	14	165.0000 N	0.0	165.0000 N	0.0	A
9. Prepared By (Resource Unit Leader)			Approved By (Planning Section Chief)		Date	Time
BRIAN LAVELLE (T)			DAVE GERBOTH		08/10/2017	2300

Division/Group Assignment List (ICS 204 WF)

1. Incident Name:			3.			
MODOC JULY COMPLEX			Branch:		Division/Group:	
2. Operational Period: DAY			II NORTH		G / I	
Date/Time From: 08/11/2017 0600 FRI		Date/Time To: 08/11/2017 1800 FRI				
4. Operations Personnel						
OPERATIONS CHIEF		BRIAN RHODES		DIVISION/GROUP SUPERVISOR		NICK BUNCH MITCH SILVESTER (T)
BRANCH DIRECTOR		MIKE TUCKER / BELINDA PLUMMER(T)		AIR TACTICAL GROUP SUPERVISOR		GARY MONDAY
5. Resources Assigned this Period						
Strike Team / Task Force / Resource Designator		LWD	Leader	Number Persons	Drop Off PT./Time	Pick Up PT./Time
CRW2IA WHITE MOUNTAIN C-21		08/21	OWEN SMITH	20	ICP/0600	ICP/1800
CRW2 CMNI 36 C-106		08/17	BRAD STEWART	21	ICP/0600	ICP/1800
CRW2 MOSQUEDA C-98		08/17	JOSE MOSQUEDA	20	ICP/0600	ICP/1800
ENG6 ANF 38 E-183		08/12	KHARY ALLEN	2	ICP/0600	ICP/1800
ENG6 FIRESTORM 9912 E-83		08/17	GRAHAM LOWE	3	ICP/0600	ICP/1800
ENG6 FIRESTORM 9904 E-109		08/18	JOSHUA BADLEY	3	ICP/0600	ICP/1800
WTS2 MCGARR'S 3868 E-290		08/17	RORY CONLAN	2	ICP/0600	ICP/1800
WTS2 WILLMORE AG E-260		08/14	KEN GRIPPIN	1	ICP/0600	ICP/1800
FEMP O-463		08/16	ERIC SCHROTH	1	ICP/0600	ICP/1800
FEMP O-465		08/15	BRENT BOLING	1	ICP/0600	ICP/1800
FEMP O-149		08/11	DAN MOORE	1	ICP/0600	ICP/1800
FEMP O-282		08/13	ERIC FERREIRA	1	ICP/0600	ICP/1800
SOFR O-221		08/11	CHRISTINE THOMPSON	1	ICP/0600	ICP/1800
8. Division/Group Communication Summary						
Function	Channel	RX Frequency N/W	RX Tone/NAC	TX Frequency N/W	TX Tone/NAC	Mode
COMMAND	3	168.7000 N	0.0	170.9750 N	110.9	A
TACTICAL	9	166.7750 N	110.9	166.7750 N	110.9	A
AIR TO GROUND CMD	13	169.0875 N	0.0	169.0875 N	0.0	A
AIR TO GROUND	14	165.0000 N	0.0	165.0000 N	0.0	A
9. Prepared By (Resource Unit Leader)			Approved By (Planning Section Chief)		Date	Time
BRIAN LAVELLE (T)			DAVE GERBOTH		08/10/2017	2300

Division/Group Assignment List (ICS 204 WF)

1. Incident Name:			3.			
MODOC JULY COMPLEX			Branch: II NORTH		Division/Group: G / I	
2. Operational Period: DAY						
Date/Time From: 08/11/2017 0600 FRI		Date/Time To: 08/11/2017 1800 FRI				
4. Operations Personnel						
OPERATIONS CHIEF		BRIAN RHODES		DIVISION/GROUP SUPERVISOR		NICK BUNCH MITCH SILVESTER (T)
BRANCH DIRECTOR		MIKE TUCKER / BELINDA PLUMMER(T)		AIR TACTICAL GROUP SUPERVISOR		GARY MONDAY
5. Resources Assigned this Period						
Strike Team / Task Force / Resource Designator		LWD	Leader	Number Persons	Drop Off PT./Time	Pick Up PT./Time
6. Control Operations/Work Assignments:						
<ul style="list-style-type: none"> Utilize appropriate suppression actions to keep fire within current containment lines. 						
7. Special Instructions:						
<ul style="list-style-type: none"> Track water usage and turn into Finance. Provide location of accountable property and dozer lines and turn into Situation Unit. Back haul trash. Follow traffic plan: On coming shift resources take 46 Road. Any suppression repair must be cleared through the Suppression Repair Branch. CHECK COMM PLAN. SELECT APPROPRIATE COMMAND CHANNEL BASED ON FIRE LOCATION. 						
8. Division/Group Communication Summary						
Function	Channel	RX Frequency N/W	RX Tone/NAC	TX Frequency N/W	TX Tone/NAC	Mode
COMMAND	3	168.7000 N	0.0	170.9750 N	110.9	A
TACTICAL	9	166.7750 N	110.9	166.7750 N	110.9	A
AIR TO GROUND CMD	13	169.0875 N	0.0	169.0875 N	0.0	A
AIR TO GROUND	14	165.0000 N	0.0	165.0000 N	0.0	A
9. Prepared By (Resource Unit Leader)			Approved By (Planning Section Chief)		Date	Time
BRIAN LAVELLE (T)			DAVE GERBOTH		08/10/2017	2300

Division/Group Assignment List (ICS 204 WF)

1. Incident Name:			3.			
MODOC JULY COMPLEX			Branch:		Division/Group:	
2. Operational Period: DAY			II		K / M	
Date/Time From: 08/11/2017 0600 FRI		Date/Time To: 08/11/2017 1800 FRI				
4. Operations Personnel						
OPERATIONS CHIEF		BRIAN RHODES		DIVISION/GROUP SUPERVISOR		
				BRANDON WOODWARD DEBORAH FLOWERS (T)		
BRANCH DIRECTOR		MIKE TUCKER / BELINDA PLUMMER (T)		AIR TACTICAL GROUP SUPERVISOR		
				GARY MONDAY		
5. Resources Assigned this Period						
Strike Team / Task Force / Resource Designator		LWD	Leader	Number Persons	Drop Off PT./Time	Pick Up PT./Time
6. Control Operations/Work Assignments:						
<ul style="list-style-type: none"> Utilize appropriate suppression actions to keep fire within current containment lines. Continue to patrol Rimrock fire. 						
7. Special Instructions:						
<ul style="list-style-type: none"> Track water usage and turn into Finance. Provide location of accountable property and dozer lines and turn into Situation Unit. Back haul trash. Continue to coordinate with O.D.F. at state line. Follow traffic plan: On coming shift resources take 46 Road. Any suppression repair must be cleared through the Suppression Repair Branch. CHECK COMM PLAN. SELECT APPROPRIATE COMMAND CHANNEL BASED ON FIRE LOCATION. 						
8. Division/Group Communication Summary						
Function	Channel	RX Frequency N/W	RX Tone/NAC	TX Frequency N/W	TX Tone/NAC	Mode
COMMAND	3	168.7000 N	0.0	170.9750 N	110.9	A
TACTICAL	10	166.5500 N	0.0	166.5500 N	0.0	A
AIR TO GROUND CMD	13	169.0875 N	0.0	169.0875 N	0.0	A
AIR TO GROUND	14	165.0000 N	0.0	165.0000N	0.0	A
9. Prepared By (Resource Unit Leader)			Approved By (Planning Section Chief)		Date	Time
JIM RAMIREZ (T)			DAVE GERBOTH		08/10/2017	2300

Division/Group Assignment List (ICS 204 WF)

1. Incident Name:			3.			
MODOC JULY COMPLEX			Branch:		Division/Group:	
2. Operational Period: DAY			II NORTH		NORTH ROAD GROUP	
Date/Time From: 08/11/2017 0600 FRI		Date/Time To: 08/11/2017 1800 FRI				
4. Operations Personnel						
OPERATIONS CHIEF		BRIAN RHODES		HEAVY EQUIPMENT BOSS		
				RONALD ROCKIS		
BRANCH DIRECTOR		MIKE TUCKER BELINDA J PLUMMER (T)		AIR TACTICAL GROUP SUPERVISOR		
				GARY MONDAY		
5. Resources Assigned this Period						
Strike Team / Task Force / Resource Designator		LWD	Leader	Number Persons	Drop Off PT./Time	Pick Up PT./Time
GRD1 OILAR 595103 07 E-211		08/13	JAMES WHITE	2	ICP/0600	ICP/1800
WTS1 BRIAN PHILIPS 91 E-207		08/13	MATT SMITH	1	ICP/0600	ICP/1800
WTS1 BEN'S TRUCK 57 E-252		08/14	ANARBOL CISNEROSTORRES	1	ICP/0600	ICP/1800
WTS1 OILAR 133A E-208		08/11	NICK OILER	1	ICP/0600	ICP/1800
WTS1 B&G E-253		08/14	GLEN REILLY	1	ICP/0600	ICP/1800
WTS1 BEN'S TRUCK 862918 E-251		08/14	ROB MOORE	1	ICP/0600	ICP/1800
WTS1 BEN'S TRUCK 862915 E-209		08/11	JOHN PRESISE	1	ICP/0600	ICP/1800
WTS2 OILAR DANIEL 262882 E-261		08/14	DANIEL OILER	2	ICP/0600	ICP/1800
WTS2 CREEK RANCH E-149		08/11	LANCE LINKER	2	ICP/0600	ICP/1800
6. Control Operations/Work Assignments:						
<ul style="list-style-type: none"> • Maintain and dust abate roads. 						
7. Special Instructions:						
<ul style="list-style-type: none"> • Check in with Branch II for priorities. • Coordinate with Branch II on traffic plan. • CHECK COMM PLAN. • SELECT APPROPRIATE COMMAND CHANNEL BASED ON LOCATION. 						
8. Division/Group Communication Summary						
Function	Channel	RX Frequency N/W	RX Tone/NAC	TX Frequency N/W	TX Tone/NAC	Mode
COMMAND	3	168.7000 N	0.0	170.9750 N	110.9	A
9. Prepared By (Resource Unit Leader)			Approved By (Planning Section Chief)		Date	Time
BRIAN LAVELLE (T)			DAVE GERBOTH		08/10/2017	2300

AIR OPERATIONS SUMMARY

Prepared By: Ty Miller *Ty Miller*

Prepared Date: 8/10/2017

Prepared Time: 20:30

1. INCIDENT NAME: Modoc July Complex North	2. OPS PERIOD DATE: 8/11/2017	START TIME: 0800	END TIME: 2000	SUNRISE: 0607	SUNSET: 2007
3. REMARKS (Safety Notes, Hazards, Air Operations, Special Equipment, etc.): Watch for wires in river canyon. Beware of rapidly changing VFR conditions due to smoke Watch for thunderstorm development.			4. READY ALERT AIRCRAFT 838 Short Haul Cal Fire Bieber Hoist MEDEVAC 525		5. TFR #: TFR removed 8/6/2017


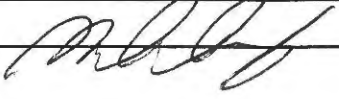
6. PERSONNEL	NAME	PHONE #	7. FREQUENCIES	AM	FM	8. FIXED-WING- Type/ Make-Model/ N#/ Base
AOBD	Ty Miller	907-460-7530	AIR/ AIR FW- PRI		167.3000	AIRTANKERS - Ordered by ATGS
ATGS	Gary Monday	805-504-5874	AIR/ AIR RW- SND		168.8375	LEAD PLANES- Ordered by ATGS
ASGS	Jim Stratton	760-207-4325	AIR/ AIR RW- PRI AIR/ AIR RW- SND	128.250 118.950		6DV - Monday
			A/G Command A/G Tactical		169.0875 165.0000	
			IA A/G 53 - PRI		167.6000	MDF ECC Aircraft Dispatcher 530-233-8880
			IA A/G 08 - SND		166.8750	OTHER FW AIRCRAFT-
HEB1	Staci Dickson	530-478-5153				
HEB1 (T)	Stefan Goldstein	530-902-0327	RW Flight Follow	119.5250		
Alturas	Helibase	530-233-1240	DECK		163.100	
	Fax	530-233-5865	Tower	127.275		

9. HELICOPTERS (Use Additional Sheets as Necessary)

FAA N#	T Y	MAKE/ MODEL	BASE	AVAIL	START	REMARKS	FAA N#	T Y	MAKE/ MODEL	BASE	AVAIL	START	REMARKS
1KA	1	Kamax (A-26)	Alturas	0900	0900	IA							
792	1	CH54A (A-20)	Alturas	0900	0900	IA							
538	2	Bell 205 A1++	Alturas	0900	0900	IA							
7AC	3	Bell 407	Alturas	0900	0900	IR							

10. TASK/ MISSION/ ASSIGNMENT (Type/ function includes: Air Tactical, Retardant, Recon, Personnel Transport, Bucket Operations, SAR, etc.)

TYPE/FUNCTION	NAME OF PERSONNEL OR CARGO (If applicable) or instructions for tactical aircraft	MISSION START	FLY FROM	FLY TO
Water Dropping		As Needed		
Recon				

INCIDENT RADIO COMMUNICATIONS PLAN			Incident Name			Date/Time Prepared			Operational Period Date/Time		
			MODOC JULY COMPLEX - NORTH ZONE-GRP 15			8/10/2017 1700			8/11/2017 0600-1800		
Ch #	Function	Channel Name/Trunked Radio System Talkgroup	Assignment	RX Freq N or W	RX Tone/NAC	TX Freq N or W	Tx Tone/NAC	Mode A, D or M	Remarks		
1	COMMAND										
2	COMMAND										
3	COMMAND	NIFC C1	NORTH CMD	168.7000 N	0.0	170.9750 N	110.9	A	Blue Mtn LO-Linked to C9, C37		
4	COMMAND	NIFC C9	NORTH CMD	170.0125 N	0.0	165.2500 N	110.9	A	Grouse Mtn. - Linked to C1, C37		
5	COMMAND	NIFC C37	NORTH CMD	171.0375 N	0.0	165.3625 N	110.9	A	Happy Camp Mtn.- Linked to C1, C9		
6	TACTICAL	NIFC T1	DIV A/C/E/O	168.0500 N	110.9	168.0500 N	110.9	A			
7	TACTICAL	NIFC T3	UNASSIGNED	168.6000 N	110.9	168.6000 N	110.9	A			
8	TACTICAL	NIFC T5	UNASSIGNED	166.7250 N	110.9	166.7250 N	110.9	A			
9	TACTICAL	NIFC T6	DIV G/I	166.7750 N	110.9	166.7750 N	110.9	A			
10	TACTICAL	R5 T4	DIV K/M	166.5500 N	0.0	166.5500 N	0.0	A			
11	TACTICAL	R5 T5	NORTH S. REPAIR	167.1125 N	0.0	167.1125 N	0.0	A			
12	TACTICAL	R5 T6	UNASSIGNED	168.2375 N	0.0	168.2375 N	0.0	A			
13	AIR TO GROUND	A/G CMD	ALL DIVISIONS	169.0875 N	0.0	169.0875 N	0.0	A	RESOURCE REQUESTS		
14	AIR TO GROUND	A/G TAC	ALL DIVISIONS	165.0000 N	0.0	165.0000 N	0.0	A	A/G TACTICAL COORDINATION		
15	TACTICAL	CALCORD	ALL DIVISIONS	156.0750 N	156.7	156.0750 N	156.7	A	MEDICAL AIR COORDINATION		
16	AIR GUARD	GUARD	ALL DIVISIONS	168.6250 N	0.0	168.6250 N	110.9	A	EMERGENCY USE ONLY TONE 1		
Special Instructions: July Communications PH #: 1-925-588-6853											
Prepared By (Communications Unit) Sal Bonillia Jr.-COML Nick Luby COML (t)						Signature:  					
						Date/Time: 8/10/2017 1700					

SOUTH ZONE

Division/Group Assignment List (ICS 204 WF)

1. Incident Name:				3.		
MODOC JULY COMPLEX				V SOUTH	Division/Group: PP / UU	
2. Operational Period: DAY						
Date/Time From: 08/11/2017 0600 FRI		Date/Time To: 08/11/2017 1800 FRI				
4. Operations Personnel						
OPERATIONS CHIEF		PATRICK TITUS		DIVISION/GROUP SUPERVISOR		KELLY CORNWALL DON SHOEMAKER (T)
BRANCH DIRECTOR		DAVE PEREIRA		AIR TACTICAL GROUP SUPERVISOR		GARY MONDAY
5. Resources Assigned this Period						
Strike Team / Task Force / Resource Designator		LWD	Leader	Number Persons	Drop Off PT./Time	Pick Up PT./Time
CRW2 TOM FERY FARM C-78		08/17	JESUS CISNEROS	20	ICP/0600	ICP/1800
CRW2 WOODPECKER C-99		08/17	CORY FOX	20	ICP/0600	ICP/1800
CRW2 STEELHEAD 17116 C-81		08/17	ALEJANDRO RODRIGUEZ	20	ICP/0600	ICP/1800
CRW2 FIRST STRIKE C-66		08/14	JAMES REICH	20	ICP/0600	ICP/1800
ENG3 AZ CEA V570 E-145		08/12	BEN BUCHANAN	4	ICP/0600	ICP/1800
ENG3 FIRESTORM 9908 E-81		08/13	JAMES AURENTZ	3	ICP/0600	ICP/1800
CHIP2 ALLEN'S BA E-296		08/18	ALLEN TOM	1	ICP/0600	ICP/1800
TFLD O-234		08/11	KRIS LARSON	1	ICP/0600	ICP/1800
FEMP O-279		08/13	BRENT JENSEN	1	ICP/0600	ICP/1800
FEMP O-281		08/13	MATT PETERS	1	ICP/0600	ICP/1800
FEMP O-276		08/13	RYAN VALLELUNGA	1	ICP/0600	ICP/1800
FEMT O-283		08/13	ANDREW BARKSDALE	1	ICP/0600	ICP/1800
SOFR O-50		08/16	WILLIAM SCHUKERT	1	ICP/0600	ICP/1800
8. Division/Group Communication Summary						
Function	Channel	RX Frequency N/W	RX Tone/NAC	TX Frequency N/W	TX Tone/NAC	Mode
COMMAND	12	169.9500 N	0.0	164.1000 N	146.2	A
TACTICAL	9	166.5500 N	0.0	166.5500 N	0.0	A
AIR TO GROUND	13	169.8250 N	0.0	169.8250 N	0.0	A
AIR TO GROUND TAC	14	169.4875 N	0.0	169.4875 N	0.0	A
9. Prepared By (Resource Unit Leader)			Approved By (Planning Section Chief)		Date	Time
BRIAN LAVELLE (T)			DAVE GERBOTH		08/10/2017	2300

Division/Group Assignment List (ICS 204 WF)

1. Incident Name:			3.			
MODOC JULY COMPLEX			Branch:		Division/Group:	
2. Operational Period: DAY			V		PP / UU	
Date/Time From: 08/11/2017 0600 FRI		Date/Time To: 08/11/2017 1800 FRI		SOUTH		
4. Operations Personnel						
OPERATIONS CHIEF		PATRICK TITUS		DIVISION/GROUP SUPERVISOR		KELLY CORNWALL DON SHOEMAKER (T)
BRANCH DIRECTOR		DAVE PEREIRA		AIR TACTICAL GROUP SUPERVISOR		GARY MONDAY
5. Resources Assigned this Period						
Strike Team / Task Force / Resource Designator		LWD	Leader	Number Persons	Drop Off PT./Time	Pick Up PT./Time
6. Control Operations/Work Assignments:						
<ul style="list-style-type: none"> ▪ Utilize appropriate suppression actions to keep fire within current containment lines. ▪ Pay special attention to Junipers holding heat. 						
7. Special Instructions:						
<ul style="list-style-type: none"> ▪ Track water usage and turn into Finance. ▪ Provide location of accountable property and dozer lines and turn into Situation Unit. ▪ Back haul trash. ▪ Any suppression repair must be cleared through the Suppression Repair Branch. 						
8. Division/Group Communication Summary						
Function	Channel	RX Frequency N/W	RX Tone/NAC	TX Frequency N/W	TX Tone/NAC	Mode
COMMAND	12	169.9500 N	0.0	164.1000 N	146.2	A
TACTICAL	9	166.5500 N	0.0	166.5500 N	0.0	A
AIR TO GROUND	13	169.8250 N	0.0	169.8250 N	0.0	A
AIR TO GROUND TAC	14	169.4875 N	0.0	169.4875 N	0.0	A
9. Prepared By (Resource Unit Leader)			Approved By (Planning Section Chief)		Date	Time
BRIAN LAVELLE (T)			DAVE GERBOTH		08/10/2017	2300

Division/Group Assignment List (ICS 204 WF)

1. Incident Name:			3.			
MODOC JULY COMPLEX			Branch:		Division/Group:	
2. Operational Period: DAY			V		RR / TT	
Date/Time From: 08/11/2017 0600 FRI		Date/Time To: 08/11/2017 1800 FRI				
4. Operations Personnel						
OPERATIONS CHIEF		PATRICK TITUS		DIVISION/GROUP SUPERVISOR		
				ERIK M JOHNSON TED KING (T)		
BRANCH DIRECTOR		DAVE PEREIRA		AIR TACTICAL GROUP SUPERVISOR		
				GARY MONDAY		
5. Resources Assigned this Period						
Strike Team / Task Force / Resource Designator		LWD	Leader	Number Persons	Drop Off PT./Time	Pick Up PT./Time
CRW2 P.R. REFOREST C-97		08/17	MARCO MENDOZA	20	ICP/0600	ICP/1800
ENGI3 HIA 9532 E-182		08/12	DERRICK EDWARD BRANHAM	5	ICP/0600	ICP/1800
CHIP2 TORCHFIRE E-297		08/17	DAVID STANDISH	1	ICP/0600	ICP/1800
HEQB O-369		08/15	BRIAN ETHERIDGE	1	ICP/0600	ICP/1800
FEMP O-152		08/11	JACOB LONG	1	ICP/0600	ICP/1800
FEMT O-162		08/11	LARRY BARLOW	1	ICP/0600	ICP/1800
SOFR O-219		08/13	BRUCE CRAMER	1	ICP/0600	ICP/1800
6. Control Operations/Work Assignments:						
<ul style="list-style-type: none"> Utilize appropriate suppression actions to keep fire within current containment lines. Pay special attention to Junipers holding heat. 						
7. Special Instructions:						
<ul style="list-style-type: none"> Track water usage and turn into Finance. Provide location of accountable property and dozer lines and turn into Situation Unit. Back haul trash. Any suppression repair must be cleared through the Suppression Repair Branch. 						
8. Division/Group Communication Summary						
Function	Channel	RX Frequency N/W	RX Tone/NAC	TX Frequency N/W	TX Tone/NAC	Mode
COMMAND	12	169.9500 N	0.0	164.1000 N	146.2	A
TACTICAL	6	168.0500 N	110.9	168.0500 N	110.9	A
AIR TO GROUND	13	169.8250 N	0.0	169.8250 N	0.0	A
AIR TO GROUND TAC	14	169.4875 N	0.0	169.4875 N	0.0	A
9. Prepared By (Resource Unit Leader)			Approved By (Planning Section Chief)		Date	Time
BRIAN LAVELLE (T)			DAVE GERBOTH		08/10/2017	2300

Division/Group Assignment List (ICS 204 WF)

1. Incident Name:			3.			
MODOC JULY COMPLEX			Branch:		Division/Group:	
2. Operational Period: DAY			V		SOUTH ROAD GROUP	
Date/Time From: 08/11/2017 0600 FRI		Date/Time To: 08/11/2017 1800 FRI		SOUTH		
4. Operations Personnel						
OPERATIONS CHIEF		PATRICK TITUS		GROUND SUPPORT LEADER		KIRBY HENNINGSEN
BRANCH DIRECTOR		DAVID M PEREIRA		AIR TACTICAL GROUP SUPERVISOR		GARY MONDAY
5. Resources Assigned this Period						
Strike Team / Task Force / Resource Designator		LWD	Leader	Number Persons	Drop Off PT./Time	Pick Up PT./Time
GRD1 DIG IT 632835 E-309		08/17	LUKE MASON	2	ICP/0600	ICP/1800
WTS1 LEPAGE CO 1 E-303		08/16	FRANK PONKE	1	ICP/0600	ICP/1800
WTS1 DIG IT CONST E-304		08/16	TYLER KELLY	1	ICP/0600	ICP/1800
WTS1 NORTHST HEAVY #321 E-306		08/17	STEVE LANZA	1	ICP/0600	ICP/1800
WTS1 SEMPLE, JOHN E-307		08/20	DOUG KAUFNER	1	ICP/0600	ICP/1800
WTS1 N ST HEAVY EQUIP #335 E-308		08/17	SCOTT BICKERS	1	ICP/0600	ICP/1800
6. Control Operations/Work Assignments:						
<ul style="list-style-type: none"> • Maintain and dust abate roads. 						
7. Special Instructions:						
<ul style="list-style-type: none"> • Check in with Branch V for priorities. • Any suppression repair must be cleared through the Suppression Repair Branch. • CHECK COMM PLAN. • SELECT APPROPRIATE COMMAND CHANNEL BASED ON LOCATION. 						
8. Division/Group Communication Summary						
Function	Channel	RX Frequency N/W	RX Tone/NAC	TX Frequency N/W	TX Tone/NAC	Mode
COMMAND	12	169.9500 N	0.0	164.1000 N	146.2	A
9. Prepared By (Resource Unit Leader)			Approved By (Planning Section Chief)		Date	Time
BRIAN LAVELLE (T)			DAVE GERBOTH		08/10/2017	2300

AIR OPERATIONS SUMMARY

Prepared By: Ty Miller



Prepared Date: 8/10/2017

Prepared Time: 20:30

1. INCIDENT NAME: Modoc July Complex South	2. OPS PERIOD DATE: 8/11/2017	START TIME: 0800	END TIME: 2000	SUNRISE: 0607	SUNSET: 2007
3. REMARKS (Safety Notes, Hazards, Air Operations, Special Equipment, etc.): Watch for wires in river canyon. Beware of rapidly changing VFR conditions due to smoke Watch for thunderstorm development.			4. READY ALERT AIRCRAFT 838 Short Haul Cal Fire Bieber Hoist MEDEVAC 525		5. TFR #: TFR removed 8/6/2017

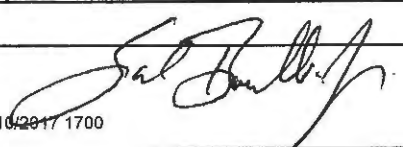
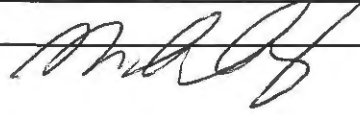
6. PERSONNEL	NAME	PHONE #	7. FREQUENCIES	AM	FM	8. FIXED-WING- Type/ Make-Model/ N#/ Base
AOBD	Ty Miller	907-460-7530	AIR/ AIR FW- PRI		167.3000	AIRTANKERS - Ordered by ATGS
ATGS	Gary Monday	805-504-5874	AIR/ AIR RW- SND		168.8375	LEAD PLANES- Ordered by ATGS
ASGS	Jim Stratton	760-207-4325	AIR/ AIR RW- PRI	128.250		6DV - Monday
			AIR/ AIR RW- SND	118.950		
			A/G Command		169.8250	
			A/G Tactical		169.4875	
			IA A/G 53 - PRI		167.6000	MDF ECC Aircraft Dispatcher 530-233-8880
			IA A/G 08 - SND		166.8750	OTHER FW AIRCRAFT-
HEB1	Staci Dickson	530-478-5153				
HEB1 (T)	Stefan Goldstein	530-902-0327	RW Flight Follow	119.5250		
Alturas	Helibase	530-233-1240	DECK		163.100	
	Fax	530-233-5865	Tower	127.275		

9. HELICOPTERS (Use Additional Sheets as Necessary)

FAA N#	T Y	MAKE/ MODEL	BASE	AVAIL	START	REMARKS	FAA N#	T Y	MAKE/ MODEL	BASE	AVAIL	START	REMARKS
1KA	1	Kamax (A-26)	Alturas	0900	0900	IA							
792	1	CH54A (A-20)	Alturas	0900	0900	IA							
538	2	Bell 205 A1++	Alturas	0900	0900	IA							
7AC	3	Bell 407	Alturas	0900	0900	IR							

10. TASK/ MISSION/ ASSIGNMENT (Type/ function includes: Air Tactical, Retardant, Recon, Personnel Transport, Bucket Operations, SAR, etc.)

TYPE/FUNCTION	NAME OF PERSONNEL OR CARGO (If applicable) or instructions for tactical aircraft	MISSION START	FLY FROM	FLY TO
Water Dropping		As Needed		
Recon				

INCIDENT RADIO COMMUNICATIONS PLAN			Incident Name MODOC JULY COMPLEX - SOUTH ZONE-GRP 14			Date/Time Prepared 8/10/2017 1700			Operational Period Date/Time 8/11/2017 0600-1800	
Ch #	Function	Channel Name/Trunked Radio System Talkgroup	Assignment	RX Freq N or W	RX Tone/NAC	TX Freq N or W	Tx Tone/NAC	Mode A, D or M	Remarks	
1	BLANK									
2	BLANK									
3	COMMAND	NIFC C1	NORTH CMD	168.7000 N	0.0	170.9750 N	110.9	A	BLUE MT LO LINK TO C9,C37	
4	COMMAND	NIFC C9	NORTH CMD	170.0125 N	0.0	165.2500 N	110.9	A	GROUSE MT LINK TO C1,C37	
5	COMMAND	NIFC C37	NORTH CMD	171.0375 N	0.0	165.3625 N	110.9	A	HAPPY CAMP MT LINK TO C1,C9	
6	TACTICAL	NIFC T1	DIV RR/TT	168.0500 N	110.9	168.0500 N	110.9	A		
7	TACTICAL	NIFC T3	UNASSIGNED	168.6000 N	110.9	168.6000 N	110.9	A		
8	TACTICAL	NIFC T5	UNASSIGNED	166.7250 N	110.9	166.7250 N	110.9	A		
9	TACTICAL	R5 T4	DIV PP/UU	166.5500 N	0.0	166.5500 N	0.0	A		
10	TACTICAL	R5 T5	UNASSIGNED	167.1125 N	0.0	167.1125 N	0.0	A		
11	TACTICAL	R5 T6	SOUTH S. REPAIR	168.2375 N	0.0	168.2375 N	0.0	A		
12	COMMAND	MDF SRV	SOUTH CMD	169.9500 N	0.0	164.1000 N	146.2	A	GROUSE MTN T5	
13	AIR TO GROUND	A/G CMD	ALL DIVISIONS	169.8250 N	0.0	169.8250 N	0.0	A	RESOURCE REQUESTS	
14	AIR TO GROUND	A/G TAC	ALL DIVISIONS	169.4875 N	0.0	169.4875 N	0.0	A	A/G TACTICAL COORDINATION	
15	TACTICAL	CALCORD	ALL DIVISIONS	156.0750 N	156.7	156.0750 N	156.7	A	MEDICAL AIR COORDINATION	
16	AIR GUARD	GUARD	ALL DIVISIONS	168.6250 N	0.0	168.6250 N	110.9	A	EMERGENCY USE ONLY TONE 1	
Special Instructions: July Communications PH #: 1-925-588-6853										
Prepared By (Communications Unit) Sal Bonillia Jr.-COML Nick Luby COML (t)					Signature:  					
					Date/Time: 8/10/2017 1700					

SUPPRESSION REPAIR

Division/Group Assignment List (ICS 204 WF)

1. Incident Name:			3.			
MODOC JULY COMPLEX			Branch:		Division/Group:	
2. Operational Period:			REPAIR		NORTH SUPPRESSION	
DAY						
Date/Time From: 08/11/2017 0600 FRI		Date/Time To: 08/11/2017 1800 FRI				
4. Operations Personnel						
OPERATIONS CHIEF		BRIAN RHODES		DIVISION/GROUP SUPERVISOR		HAROLD L KIBBE
BRANCH DIRECTOR		BRETT WATERS		AIR TACTICAL GROUP SUPERVISOR		GARY MONDAY
5. Resources Assigned this Period						
Strike Team / Task Force / Resource Designator		LWD	Leader	Number Persons	Drop Off PT./Time	Pick Up PT./Time
CRW2 EARTH IND C-69		08/14	JOSE ARAUJO	20	ICP/0600	ICP/1800
DOZ2 BUSHEY E-362		08/23	TOM MINTO	1	ICP/0600	ICP/1800
DOZ3 ENF 3 E-232		08/13	DANIEL J LANGENDERFER	3	ICP/0600	ICP/1800
EXCA2 M PETERS E-352		08/19	JIM SCOTT	2	ICP/0600	ICP/1800
EXCA2 EWING E-272		08/14	TONY EWING	2	ICP/0600	ICP/1800
EXCA2 DIAMOND RING E-350		08/20	JOHN BRITTEN	2	ICP/0600	ICP/1800
EXCA2 JOHNSON MARK B E-351		08/20	CLINT JOHNSON	2	ICP/0600	ICP/1800
CHIP2 - ADKINS W024166 E-367		08/23	RON ATKINS	2	ICP/0600	ICP/1800
TFLD O-190		08/12	LAWSON LOGAN JR	1	ICP/0600	ICP/1800
TFLD O-397		08/14	PAUL CATLETT	1	ICP/0600	ICP/1800
TFLD (T) O-364		08/14	DAN PEARSALL	1	ICP/0600	ICP/1800
HEBQ O-413		08/15	RYAN W RIDDLE	1	ICP/0600	ICP/1800
HEQB O-115		08/17	DARREN CLUFF	1	ICP/0600	ICP/1800
HEQB O-116		08/11	TIM A COLLINS	1	ICP/0600	ICP/1800
HEQB (T) O-370		08/16	JOE N BRINSON JR	1	ICP/0600	ICP/1800
HEQB (T) O-429		08/18	DANNY NAYLOR	1	ICP/0600	ICP/1800
HEBQ (T) O-432		08/19	WILLIAM B HOWARD	1	ICP/0600	ICP/1800
HEQB (T) O-414		08/15	BRIAN TALBOTT	1	ICP/0600	ICP/1800
FOBS O-316		08/14	BRUCE CANN	1	ICP/0600	ICP/1800
FOBS (T) O-344		08/15	MICHAEL L TRIERWEILER	1	ICP/0600	ICP/1800
8. Division/Group Communication Summary						
Function	Channel	RX Frequency N/W	RX Tone/NAC	TX Frequency N/W	TX Tone/NAC	Mode
COMMAND	3	168.7000 N	0.0	170.9750 N	110.9	A
TACTICAL	11	167.1125 N	0.0	167.1125 N	0.0	A
AIR TO GROUND CMD	13	169.0875 N	0.0	169.0875 N	0.0	A
AIR TO GROUND TAC	14	165.0000 N	0.0	165.0000 N	0.0	A
9. Prepared By (Resource Unit Leader)			Approved By (Planning Section Chief)		Date	Time
BRIAN LAVELLE			DAVE GERBOTH		08/10/2017	2300

Division/Group Assignment List (ICS 204 WF)

1. Incident Name:			3.			
MODOC JULY COMPLEX			Branch:		Division/Group:	
2. Operational Period: DAY			REPAIR		NORTH SUPPRESSION	
Date/Time From: 08/11/2017 0600 FRI		Date/Time To: 08/11/2017 1800 FRI				
4. Operations Personnel						
OPERATIONS CHIEF		BRIAN RHODES		DIVISION/GROUP SUPERVISOR		HAROLD L KIBBE
BRANCH DIRECTOR		BRETT WATERS		AIR TACTICAL GROUP SUPERVISOR		GARY MONDAY
5. Resources Assigned this Period						
Strike Team / Task Force / Resource Designator		LWD	Leader	Number Persons	Drop Off PT./Time	Pick Up PT./Time
SOFR O-145		08/18	DANIEL GILES	1	ICP/0600	ICP/1800
READ O-228		08/11	JOE SVINARICH	1	ICP/0600	ICP/1800
READ (T) O-330		08/13	TRAVIS S KIRKLAND	1	ICP/0600	ICP/1800
REAF O-506		08/23	WILLIAM D TRIPP	1	ICP/0600	ICP/1800
6. Control Operations/Work Assignments:						
<ul style="list-style-type: none"> • Continue suppression repair in identified areas. 						
7. Special Instructions:						
<ul style="list-style-type: none"> • Coordinate with lead READ. • Map and report progress to Situation unit. 						
8. Division/Group Communication Summary						
Function	Channel	RX Frequency N/W	RX Tone/NAC	TX Frequency N/W	TX Tone/NAC	Mode
COMMAND	3	168.7000 N	0.0	170.9750 N	110.9	A
TACTICAL	11	167.1125 N	0.0	167.1125 N	0.0	A
AIR TO GROUND CMD	13	169.0875 N	0.0	169.0875 N	0.0	A
AIR TO GROUND TAC	14	165.0000 N	0.0	165.0000 N	0.0	A
9. Prepared By (Resource Unit Leader)			Approved By (Planning Section Chief)		Date	Time
BRIAN LAVELLE			DAVE GERBOTH		08/10/2017	2300

Division/Group Assignment List (ICS 204 WF)

1. Incident Name:			3.			
MODOC JULY COMPLEX			REPAIR		SOUTH SUPPRESSION	
2. Operational Period: DAY						
Date/Time From: 08/11/2017 0600 FRI		Date/Time To: 08/11/2017 1800 FRI				
4. Operations Personnel						
OPERATIONS CHIEF PATRICK TITUS		DIVISION/GROUP SUPERVISOR DREW GRAHAM MARK MOTT				
BRANCH DIRECTOR BRETT WATERS		AIR ATTACK SUPERVISOR GARY MONDAY				
5. Resources Assigned this Period						
Strike Team / Task Force / Resource Designator		LWD	Leader	Number Persons	Drop Off PT./Time	Pick Up PT./Time
DIVS (T) O-450		08/18	COURTNEY FENT	1	ICP/0600	ICP/1800
DIVS (T) O-240		08/11	DANIEL OSTMANN	1	ICP/0600	ICP/1800
DOZ2 MDF4 E-195 LOCAL		08/31	KENT INSLEY	2	ICP/0600	ICP/1800
DOZ2 LPF 3 E-136		08/11	SEAN KENNEY	2	ICP/0600	ICP/1800
DOZ2 DIAMOND RING RANCH E-170		08/22	TOM HENTHORN	1	ICP/0600	ICP/1800
DOZ2 SHERER E-365 (6 WAY)		08/22	MIKE SALTERS	1	ICP/0600	ICP/1800
DOZ2 SHERER E-364 (6 WAY)		08/22	SHAWN SHERER	1	ICP/0600	ICP/1800
DOZ2 BUSHEY E-363		08/23	LEE WOOD	1	ICP/0600	ICP/1800
EXCA2 WHITE 321 E-273		08/13	DUSTIN WHITE	2	ICP/0600	ICP/1800
EXCA2 NORTH RIVERS 107 E-360		08/22	CODY CARLSON	2	ICP/0600	ICP/1800
EXCA2 MICHAEL KIRACK E-361		08/22	GARY KIRACK	2	ICP/0600	ICP/1800
TFLD O-213		08/13	SCOTT AFFELDT	1	ICP/0600	ICP/1800
TFLD O-233		08/11	JESSE BRUNK	1	ICP/0600	ICP/1800
HEQB O-225		08/11	RODNEY G HELZER	1	ICP/0600	ICP/1800
FOBS O-361		08/14	ERIK APLAND	1	ICP/0600	ICP/1800
FOBS O-317		08/14	JERE MILLER	1	ICP/0600	ICP/1800
FOBS (T) O-388		08/15	DOUG LINGEN	1	ICP/0600	ICP/1800
SOFR O-146		08/11	CHARLES L WHITE	1	ICP/0600	ICP/1800
READ O-180		08/17	SUSAN LYNN FRYE	1	ICP/0600	ICP/1800
READ O-395		08/16	CECILIA MARELLA	1	ICP/0600	ICP/1800
8. Division/Group Communication Summary						
Function	Channel	RX Frequency N/W	RX Tone/NAC	TX Frequency N/W	TX Tone/NAC	Mode
COMMAND	12	169.9500 N	0.0	164.1000 N	146.2	A
TACTICAL	11	168.2375 N	0.0	168.2375 N	0.0	A
AIR TO GROUND	13	169.8250 N	0.0	169.8250 N	0.0	A
AIR TO GROUND	14	169.4875 N	0.0	169.4875 N	0.0	A
9. Prepared By (Resource Unit Leader)			Approved By (Planning Section Chief)		Date	Time
GINA BALD			DAVE GERBOTH		08/10/2017	2300

Division/Group Assignment List (ICS 204 WF)

1. Incident Name:			3.			
MODOC JULY COMPLEX			REPAIR		SOUTH SUPPRESSION	
2. Operational Period: DAY						
Date/Time From: 08/11/2017 0600 FRI		Date/Time To: 08/11/2017 1800 FRI				
4. Operations Personnel						
OPERATIONS CHIEF		PATRICK TITUS		DIVISION/GROUP SUPERVISOR		DREW GRAHAM MARK MOTT
BRANCH DIRECTOR		BRETT WATERS		AIR ATTACK SUPERVISOR		GARY MONDAY
5. Resources Assigned this Period						
Strike Team / Task Force / Resource Designator		LWD	Leader	Number Persons	Drop Off PT./Time	Pick Up PT./Time
READ (T) O-62		08/16	GARRETT R NOLES	1	ICP/0600	ICP/1800
REAF O-265		08/11	LEVI BATEMAN	1	ICP/0600	ICP/1800
6. Control Operations/Work Assignments:						
<ul style="list-style-type: none"> • Continue suppression repair in identified areas. 						
7. Special Instructions:						
<ul style="list-style-type: none"> • Coordinate with lead READ. • Map and report progress to Situation unit. 						
8. Division/Group Communication Summary						
Function	Channel	RX Frequency N/W	RX Tone/NAC	TX Frequency N/W	TX Tone/NAC	Mode
COMMAND	12	169.9500 N	0.0	164.1000 N	146.2	A
TACTICAL	11	168.2375 N	0.0	168.2375 N	0.0	A
AIR TO GROUND	13	169.8250 N	0.0	169.8250 N	0.0	A
AIR TO GROUND	14	169.4875 N	0.0	169.4875 N	0.0	A
9. Prepared By (Resource Unit Leader)			Approved By (Planning Section Chief)		Date	Time
GINA BALD			DAVE GERBOTH		08/10/2017	2300

INITIAL ATTACK

Division/Group Assignment List (ICS 204 WF)

1. Incident Name:			3.			
MODOC JULY COMPLEX			IA		NORTH IA	
2. Operational Period: DAY						
Date/Time From: 08/11/2017 0600 FRI		Date/Time To: 08/11/2017 1800 FRI				
4. Operations Personnel						
OPERATIONS CHIEF		PATRICK TITUS		DIVISION/GROUP SUPERVISOR		CHRIS ORR (530) 640-1464 ROB DECAMP (T)
BRANCH DIRECTOR		STEVE MURPHY JAMES W BURTON (T)		AIR TACTICAL GROUP SUPERVISOR		GARY MONDAY
5. Resources Assigned this Period						
Strike Team / Task Force / Resource Designator		LWD	Leader	Number Persons	Drop Off PT./Time	Pick Up PT./Time
DIVS (T) O-448		08/18	JEDEDIAH GETMAN	1	ICP/0600	ICP/1800
CRW 2IA LASSEN 9 C-50		08/11	ALLEN SCHULTZE	20	ICP/0600	ICP/1800
CRW2 SAMOA 61 C-105		08/18	MICHAEL ALLAN	26	ICP/0600	ICP/1800
CRW2 LAVA RIVER FORESTRY C-82		08/17	GARCIA BERNARDO	20	ICP/0600	ICP/1800
CRW2 STEELHEAD 15 C-80		08/17	JACOB PLACE	20	ICP/0600	ICP/1800
ENG3 MDF 82 E-338		08/11	JIM ADAMS	3	ICP/0600	ICP/1800
ENG3 MDF64 E-355		08/19	CHADRIC HOLSTER	5	ICP/0600	ICP/1800
ENG3 MDF 55 E-358		08/15	JASON BUNKER	5	ICP/0600	ICP/1800
ENG6 L&A WILDFIRE ENG11 E-326		08/18	JOSH WAGNER	3	ICP/0600	ICP/1800
ENG6 GONZALEZ E-330		08/19	JOHN BADJAR	3	ICP/0600	ICP/1800
ENG6 SOUTHERN ROCKY E-329		08/19	HORACE COMANCHE	3	ICP/0600	ICP/1800
ENG6 YABOY E-325		08/19	BRETT BOWER	4	ICP/0600	ICP/1800
ENG3 MDF46 LOCAL		08/31	TIMOTHY SIMPSON	3	ICP/0600	ICP/1800
DO22 SHF 79 E-234		08/19	THOMAS GRAHAM	3	ICP/0600	ICP/1800
SKG2 LET-ER-BUCK E-239		08/13	STEVE LASSEN	3	ICP/0600	ICP/1800
WTS2 WILLS E-150		08/21	BILL PHILL	1	ICP/0600	ICP/1800
WTS2 KDH ENTERPRISES E-266		08/14	KEVIN HORN	1	ICP/0600	ICP/1800
WTS2 JJ WATER E-70		08/22	JOE HEMPHILE	1	ICP/0600	ICP/1800
TFLD O-220		08/15	MICHAEL MCMILLAN	1	ICP/0600	ICP/1800
8. Division/Group Communication Summary						
Function	Channel	RX Frequency N/W	RX Tone/NAC	TX Frequency N/W	TX Tone/NAC	Mode
COMMAND	1	173.7875 N	SEE 205	162.4875 N	SEE 205	A
TACTICAL R5 T6	5	168.2375 N	0.0	168.2375 N	0.0	A
TACTICAL R5 T4	6	166.5500 N	0.0	166.5500 N	0.0	A
AIR TO GROUND 43	13	167.6000 N	0.0	167.6000 N	0.0	A
AIR TO GROUND 08	14	166.8750 N	0.0	166.8750 N	0.0	A
9. Prepared By (Resource Unit Leader)			Approved By (Planning Section Chief)		Date	Time
JIM RAMIREZ (T)			DAVE GERBOTH		08/10/2017	2300

Division/Group Assignment List (ICS 204 WF)

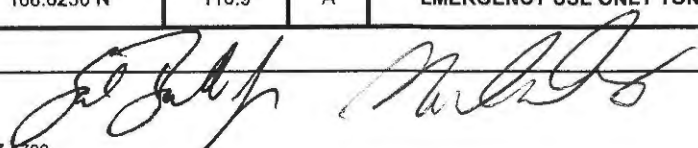
1. Incident Name:			3.			
MODOC JULY COMPLEX			Branch: IA		Division/Group: NORTH IA	
2. Operational Period: DAY						
Date/Time From: 08/11/2017 0600 FRI		Date/Time To: 08/11/2017 1800 FRI				
4. Operations Personnel						
OPERATIONS CHIEF		PATRICK TITUS		DIVISION/GROUP SUPERVISOR		CHRIS ORR (530) 640-1464 ROB DECAMP (T)
BRANCH DIRECTOR		STEVE MURPHY JAMES W BURTON (T)		AIR TACTICAL GROUP SUPERVISOR		GARY MONDAY
5. Resources Assigned this Period						
Strike Team / Task Force / Resource Designator		LWD	Leader	Number Persons	Drop Off PT./Time	Pick Up PT./Time
TFLD O-187		08/11	KARL FOWLER	1	ICP/0600	ICP/1800
STEN O-210		08/11	STEVE SILVA	1	ICP/0600	ICP/1800
HEQB O-226		08/14	WESLEY HATCH	1	ICP/0600	ICP/1800
HEQB O-412		08/11	JAMES MELLOR	1	ICP/0600	ICP/1800
FEMP O-286		08/13	SEAN CAVAVAUGH	1	ICP/0600	ICP/1800
FEMP O-285		08/13	ROUCAL REOH	1	ICP/0600	ICP/1800
6. Control Operations/Work Assignments:						
<ul style="list-style-type: none"> • Prepare for I.A. 						
7. Special Instructions:						
<ul style="list-style-type: none"> • Track all existing and new starts. • Stage at Dry Lake. • Group Supervisor is MDF Chris Orr (530) 640-1464. • Ensure WGS 84 DDM format is used for Lat / Long. • Modoc Dispatch (530) 233-8880. • CHECK IA COMM PLAN. • SELECT APPROPRIATE TONE BASED ON FIRE LOCATION. 						
8. Division/Group Communication Summary						
Function	Channel	RX Frequency N/W	RX Tone/NAC	TX Frequency N/W	TX Tone/NAC	Mode
COMMAND	1	173.7875 N	SEE 205	162.4875 N	SEE 205	A
TACTICAL R5 T6	5	168.2375 N	0.0	168.2375 N	0.0	A
TACTICAL R5 T4	6	166.5500 N	0.0	166.5500 N	0.0	A
AIR TO GROUND 43	13	167.6000 N	0.0	167.6000 N	0.0	A
AIR TO GROUND 08	14	166.8750 N	0.0	166.8750 N	0.0	A
9. Prepared By (Resource Unit Leader)			Approved By (Planning Section Chief)		Date	Time
JIM RAMIREZ (T)			DAVE GERBOTH		08/10/2017	2300

Division/Group Assignment List (ICS 204 WF)

1. Incident Name:			3.			
MODOC JULY COMPLEX			IA		SOUTH IA	
2. Operational Period: DAY						
Date/Time From: 08/11/2017 0600 FRI		Date/Time To: 08/11/2017 1800 FRI				
4. Operations Personnel						
OPERATIONS CHIEF		PATRICK TITUS		DIVISION/GROUP SUPERVISOR		MIKE CRITES CELL: (530) 708-2068 JOSH OSTEEEN (T)
BRANCH DIRECTOR		STEVE MURPHY JAMES W BURTON (T)		AIR TACTICAL GROUP SUPERVISOR		GARY MONDAY
5. Resources Assigned this Period						
Strike Team / Task Force / Resource Designator		LWD	Leader	Number Persons	Drop Off PT./Time	Pick Up PT./Time
DIVS O-11		08/11	SHAUN CRAIG	1	ICP/0600	ICP/1800
CRW1 SPRINGVILLE IHC C-52		08/11	JOAQUIN MEDINA	21	ICP/0600	ICP/1800
CRW2 COOPER C-96		08/17	SEAN PETERSON	20	ICP/0600	ICP/1800
CRW2 FRANCO C-35		08/13	ARTURO QUEVADO-FRANCO	20	ICP/0600	ICP/1800
ENG3 MDF 44 E-192		08/17	DYLAN PREWITT	6	ICP/0600	ICP/1800
ENG3 HTF 315 E-333		08/15	TAYLOR FARRINGTON	5	ICP/0600	ICP/1800
ENG6 AZ E-362 E-142		08/12	STEVE ESTELLE	4	ICP/0600	ICP/1800
ENG6 J3 CONT E-323		08/19	MESHEL RAD	3	ICP/0600	ICP/1800
ENG6 LANE ENTERPRISES #217 E-328		08/19	DAVID LANE	3	ICP/0600	ICP/1800
ENG6 WILDFIRE SUPPORT 616 E-327		08/19	KEN ARINGDALE	3	ICP/0600	ICP/1800
DOZ2 BEN'S E-270		08/14	BILL SCARVAROUGH	1	ICP/0600	ICP/1800
WTT2 KILLINGBECK /INGRAHAM E-59		08/21	BRIAN INGRAM	1	ICP/0600	ICP/1800
WTS2 LARRANAGA E-15		08/20	BRENT SMALL	1	ICP/0600	ICP/1800
WTS2 NOR CAL #1 E-264		08/15	CHRIS NICHOLS	1	ICP/0600	ICP/1800
WTS2 SEMPLE 940 E-152		08/23	AL CROSS	1	ICP/0600	ICP/1800
WTS2 TURNER EXC. E-268		08/20	DENNIS HURL	1	ICP/0600	ICP/1800
ICT4 O-351		08/15	JENNIFER LENEAVE	1	ICP/0600	ICP/1800
TFLD O-211		08/12	JEFF RIGGIN	1	ICP/0600	ICP/1800
TFLD (T) O-433		08/17	KYLE L BONHAM	1	ICP/0600	ICP/1800
8. Division/Group Communication Summary						
Function	Channel	RX Frequency N/W	RX Tone/NAC	TX Frequency N/W	TX Tone/NAC	Mode
COMMAND	1	173.7875 N	SEE 205	162.4875 N	SEE 205	A
TACTICAL R5 T6	5	168.2375 N	0.0	168.2375 N	0.0	A
TACTICAL R5 T4	6	166.5500 N	0.0	166.5500 N	0.0	A
AIR TO GROUND 43	13	167.6000 N	0.0	167.6000 N	0.0	A
AIR TO GROUND 08	14	166.8750 N	0.0	166.8750 N	0.0	A
9. Prepared By (Resource Unit Leader)			Approved By (Planning Section Chief)		Date	Time
GINA BALD			DAVE GERBOTH		08/10/2017	2300

Division/Group Assignment List (ICS 204 WF)

1. Incident Name:			3.			
MODOC JULY COMPLEX			IA		SOUTH IA	
2. Operational Period: DAY						
Date/Time From: 08/11/2017 0600 FRI		Date/Time To: 08/11/2017 1800 FRI				
4. Operations Personnel						
OPERATIONS CHIEF		PATRICK TITUS		DIVISION/GROUP SUPERVISOR		MIKE CRITES CELL: (530) 708-2068 JOSH OSTEEN (T)
BRANCH DIRECTOR		STEVE MURPHY JAMES W BURTON (T)		AIR TACTICAL GROUP SUPERVISOR		GARY MONDAY
5. Resources Assigned this Period						
Strike Team / Task Force / Resource Designator		LWD	Leader	Number Persons	Drop Off PT./Time	Pick Up PT./Time
THSP FUELS O-350		08/14	AMANDA SHOAF	1	ICP/0600	ICP/1800
FEMP O-278		08/12	JOSEPH MONTEJANO	1	ICP/0600	ICP/1800
FEMT O-284		08/13	LANCE MORTON	1	ICP/0600	ICP/1800
6. Control Operations/Work Assignments:						
<ul style="list-style-type: none"> • Prepare for IA. 						
7. Special Instructions:						
<ul style="list-style-type: none"> • Track all existing and new starts. • Staging at Adin. • Group Supervisor is MDF Mike Crites (530)708-2068. • Ensure WGS 84 DDM format is used for Lat / Long. • Modoc Dispatch (530) 233-8880. • CHECK IA COMM PLAN. • SELECT APPROPRIATE TONE BASED ON FIRE LOCATION. 						
8. Division/Group Communication Summary						
Function	Channel	RX Frequency N/W	RX Tone/NAC	TX Frequency N/W	TX Tone/NAC	Mode
COMMAND	1	173.7875 N	SEE 205	162.4875 N	SEE 205	A
TACTICAL R5 T6	5	168.2375 N	0.0	168.2375 N	0.0	A
TACTICAL R5 T4	6	166.5500 N	0.0	166.5500 N	0.0	A
AIR TO GROUND 43	13	167.6000 N	0.0	167.6000 N	0.0	A
AIR TO GROUND 08	14	166.8750 N	0.0	166.8750 N	0.0	A
9. Prepared By (Resource Unit Leader)			Approved By (Planning Section Chief)		Date	Time
GINA BALD			DAVE GERBOTH		08/10/2017	2300

INCIDENT RADIO COMMUNICATIONS PLAN			Incident Name MODOC JULY "IA ONLY"			Date/Time Prepared 8/10/2017 1700		Operational Period Date/Time 8/11/2017 0600-1800		
Ch #	Function	Channel Name/Trunked Radio System Talkgroup	Assignment	RX Freq N or W	RX Tone/NAC	TX Freq N or W	Tx Tone/NAC	Mode A, D or M	Remarks	
1	COMMAND	ADM TN5	IA MODOC	173.7875 N	0.0	162.4875 N	146.2	A	GROUSE MT T5	
2	COMMAND	ADM TN7	IA MODOC	173.7875 N	0.0	162.4875 N	167.9	A	RED SHALE MT T7	
3	COMMAND	ADM TN3	IA MODOC	173.7875 N	0.0	162.4875 N	131.8	A	LIKELY MT T3	
4	COMMAND	ADM TN8	IA MODOC	173.7875 N	0.0	162.4875 N	103.5	A	WIDOW MT T8	
5	TACTICAL	R5 T6	ALL DIVISIONS	168.2375 N	0.0	168.2375 N	0.0	A		
6	TACTICAL	R5 T4	ALL DIVISIONS	166.5500 N	0.0	166.5500 N	0.0	A		
7	TACTICAL	FOR RX	ALL DIVISIONS	170.7375 N	0.0	BLANK	0.0	A	<u>RX ONLY-FOR MONITORING</u>	
8	TACTICAL	CDF T 3	ALL DIVISIONS	151.1750 N	192.8	151.1750 N	192.8	A		
9	TACTICAL	CDF T10	ALL DIVISIONS	151.4000 N	192.8	151.4000 N	192.8	A		
10	TACTICAL	NIFC T2	ALL DIVISIONS	168.2000 N	0.0	168.2000 N	0.0	A		
11	TACTICAL	NIFC T7	ALL DIVISIONS	168.2500 N	0.0	168.2500 N	0.0	A		
12	TACTICAL	VFIRE 22	ALL DIVISIONS	154.2650 N	156.7	154.2650 N	156.7	A		
13	AIR/GROUND	AG-43	ALL DIVISIONS	167.6000 N	0.0	167.6000 N	0.0	A		
14	AIR/GROUND	AG-08	ALL DIVISIONS	166.8750 N	0.0	166.8750 N	0.0	A		
15	MEDICAL COORDINATION	CALCORD	ALL DIVISIONS	156.0750 N	156.7	156.0750 N	156.7	A		
16	AIR GUARD	GUARD	ALL DIVISIONS	168.6250 N	0.0	168.6250 N	110.9	A	EMERGENCY USE ONLY TONE 1	
Special Instructions: July Communications PH #: 1-925-588-6853										
Prepared By (Communications Unit) Sal Bonillia Jr.-COML Nick Luby COML (t)					Signature: 					
					Date/Time: 8/10/2017 1700					

STAGING

Division/Group Assignment List (ICS 204 WF)

1. Incident Name:			3.			
MODOC JULY COMPLEX			Branch:		Division/Group: STAGING	
2. Operational Period: DAY						
Date/Time From: 08/11/2017 0600 FRI		Date/Time To: 08/11/2017 1800 FRI				
4. Operations Personnel						
OPERATIONS CHIEF		PAT TITUS / BRIAN RHODES		STAGING AREA MANAGER		
				ROBIN ACE		
				AIR TACTICAL GROUP SUPERVISOR		
				GARY MONDAY		
5. Resources Assigned this Period						
Strike Team / Task Force / Resource Designator		LWD	Leader	Number Persons	Drop Off PT./Time	Pick Up PT./Time
DIVS O-466		08/19	KRIS SCHROEDER	1	ICP/0600	ICP/1800
6. Control Operations/Work Assignments:						
<ul style="list-style-type: none"> • Ability to respond within 5 minutes. 						
7. Special Instructions:						
<ul style="list-style-type: none"> • Staging area is located across from ICP. 						
8. Division/Group Communication Summary						
Function	Channel	RX Frequency N/W	RX Tone/NAC	TX Frequency N/W	TX Tone/NAC	Mode
COMMAND	12	169.9500 N	0.0	164.1000 N	146.2	A
9. Prepared By (Resource Unit Leader)			Approved By (Planning Section Chief)		Date	Time
BRIAN LAVELLE			DAVE GERBOTH		08/10/2017	2300

Modoc July Complex – Safety Message

INCIDENT #CA-MDF-000671

DATE: 08-11-17 TIME: 0600 – 1800 Day

COMPLACENCY

- Defined= A feeling of being satisfied and not wanting to make it better.
- Your goal is to **NEVER** be satisfied with your safety.
- Keep your edge by asking these 3 questions;
 - What could go wrong?
 - What more can I do to ensure our safety?
 - What may I be unaware of that could compromise our safety?
- Look up, Look down, and Look all around to maintain your awareness.

Working with Heavy Equipment

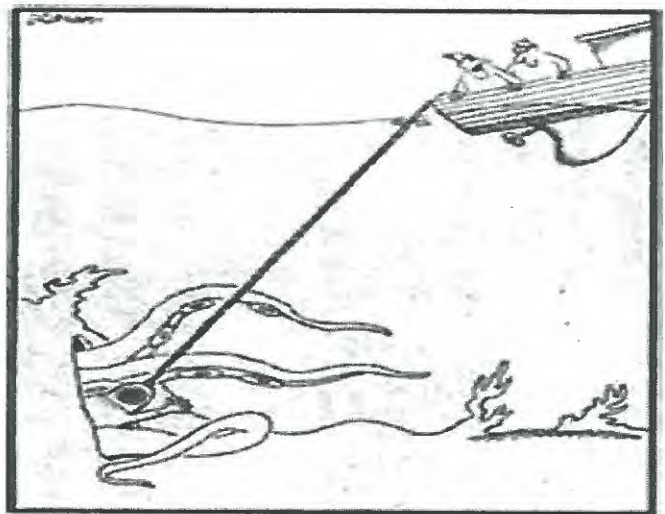
- When working around heavy equipment stay at least 100 feet in front and 50 feet behind the equipment. In timber, distances should be increased to 2 ½ times the canopy height.
- Never ride on the equipment.
- Do not approach equipment without eye contact with the operator, implements grounded, and in idle.
- Avoid working below equipment where rolling material is present.
- Establish visual and radio contact before engaging.
- Communicate all hazards to the operator.
- Equipment operators have difficulty seeing ground personnel; take responsibility for your safety and all those around you.

FATIGUE EFFECTS AND MANAGEMENT

- Cumulative fatigue is a contributing factor in many accidents.
- Fatigue effects your mental processing, your ability to access your short and long term memory, as well as your physical performance.
- The effect of 24 hours without sleep is equivalent to being legally drunk.
- The only remedy to fatigue is quality sleep. Manage your off shift time to ensure you and your personnel get the rest needed.


“Hindsight is a wonderful thing but foresight is better, especially when it comes to saving life, or some pain.”

William Blake



“Now wait a minute . . . He said two jerks means ‘more slack’ and three meant ‘come up’ . . . but he never said nothin’ about one long, steady pull.”



DIV	HAZARDOUS ACTIONS / CONDITIONS	MITIGATIONS / WARNINGS / REMEDIES
ALL	FIRE WEATHER	<ul style="list-style-type: none"> • Winds increasing or changing direction. • Weather becoming hotter and drier. • Unstable atmosphere can promote rapid fire growth.
ALL	TRAFFIC AND DRIVING	<ul style="list-style-type: none"> • Practice "Defensive Driving" techniques. • Use spotters when backing, always use headlights. • Use warning lights when working on roads or traveling in smoke. • Reduce speed when dusty, maintain adequate spacing with other vehicles. • Some roads are dead end with poor turn around, scout roads first. • Watch for livestock and wildlife.
ALL	DANGER TREES	<ul style="list-style-type: none"> • Follow "Hazard Tree Safety" guidelines, IRPG page 22. • Post lookouts, or use a spotter in mop-up areas with personnel. • Don't park vehicles or take breaks in high concentrations of hazard trees. • "Establish trigger points for disengagement during high wind events".
ALL	FIREFIGHTER FATIGUE	<ul style="list-style-type: none"> • Follow work rest guidelines. • Take breaks as needed. • Stay hydrated and well nourished. • Supervisors assess the fatigue levels of your crew members.
ALL	HEAVY EQUIPMENT OPERATIONS	<ul style="list-style-type: none"> • Ensure communications are established with operators. • Use hand signals if other communications are unavailable. • Maintain a minimum of 2 ½ times the tree height exclusion area around equipment. • Use a spotter when backing.
ALL	MOP UP	<ul style="list-style-type: none"> • Conduct thorough briefing for all personnel (inside rear cover IRPG). • Use all required PPE, including eye protection. • Maintain proper spacing and overhead clearance. • Be alert for stump holes and root cavities. • Minimize exposure to smoke, and rotate personnel into clean air when practical. • Evaluate unburned islands/increase situational awareness.
ALL	THUNDERSTORMS	<ul style="list-style-type: none"> • Refer to IRPG page 21, Thunderstorm guidelines. • Heads up for erratic winds and possible downdrafts. • Follow the 30/30 rule.
ALL	HEAT RELATED ILLNESS (HRI) & DEHYDRATION	<ul style="list-style-type: none"> • Drink 2 to 1 ratio of water to sports drinks. • Take frequent breaks, minimum of 10 minutes every hour. • Recognize symptoms of HEAT RELATED ILLNESS which include; Lack of energy, headaches, dizziness, lack of rest, no hunger, poor eating habits, hot skin, and lack of sweating.
ALL	SPOT FIRES	<ul style="list-style-type: none"> • Size up prior to engagement. • Watch for multiple spots. • Ensure LCES is in place. • Maintain Situational Awareness at all times.
ALL	AIR OPERATIONS	<ul style="list-style-type: none"> • Follow Aviation "Watch-Out Situations" on page 44, IRPG. • Don't plan on air resources for medical transport or resupply. • Refer to page 57, IRPG for directing bucket drops. • Ensure positive communications with all air resources.
<p>INCIDENT NAME</p> <p>MODOC JULY COMPLEX</p> <p>ICS 215a</p>		<p>DATE PREPARED:</p> <p style="text-align: center;">August 10, 2017</p> <hr/> <p>TIME PREPARED:</p> <p style="text-align: center;">1700 HOURS</p> <div style="float: right; text-align: right;"> <p>OPERATIONAL PERIOD</p> <p>Day Shift 08/11/17</p> <p>0600-1800 Prepared by:</p> <p>John Kraushaar</p> </div> <div style="text-align: right; margin-top: 20px;">  </div>

MEDICAL PLAN ICS 206	1. INCIDENT NAME Modoc July Complex	2. DATE PREPARED August 10, 2017	3. TIME PREPARED 1700	4. OPERATIONAL PERIOD August 11, 2017 0600-1800
---------------------------------	--	---	--------------------------------------	--

5. INCIDENT MEDICAL AID STATIONS				
MEDICAL AID STATIONS	LOCATION			PARAMEDICS
				YES NO
Frontline Medical	Modoc July Complex ICP			X

A. AIR AMBULANCES				
NAME	LOCATION	PHONE	PARAMEDICS	
			YES	NO
SEMSA Air 2 – (Non Hoist) NVG Capable	Adin, CA 96006	Command to Communications	RN/PM	
REACH – (Non Hoist) NVG Capable	Redding, CA 96003	Command to Communications	RN/PM	
PHI Air Medical – (Non Hoist) NVG Capable (No Unimproved Helispot Landing)	Redding, CA 96003	Command to Communications	RN/PM	
CDF 202 – Hoist Capable No night Ops	Bieber CDF	Command to Communications		X

B. GROUND AMBULANCES				
NAME	LOCATION and PHONE NUMBER			PARAMEDICS
				YES NO
Mountain Medics (Incident Dedicated)	DP – 72	Command		X
Frontline (Incident Dedicated)	DP - 48 / 49	Command		X

7. HOSPITALS									
NAME	ADDRESS	TRAVEL TIME		PHONE	HELIPAD		BURN CTR		
		AIR	GRND		YES	NO	YES	NO	
Modoc Medical Center	228 W. McDowell Alturas, CA	15m	40m	(530) 233-7037	X			X	
Mayers Memorial Hospital	43563 Hwy 299 East Fall River Mills, CA	20m	55m	(530) 336-7543	X			X	
Rogue Regional Medical Center (Level 2 Trauma)	E. Barnett Rd Medford, OR	50m	2.5hrs	(541) 789-7132	X			X	
Mercy Medical Center (Level 2 Trauma)	2175 Rosaline Ave Redding, CA	50m	2.5hrs	(530) 225-7201	X			X	
UC Davis Medical Center (Level 1 Trauma)	2315 Stockton Blvd Sacramento, CA	1.5h	6h	(916) 734-5669 (916) 734-3636 Burn Center	X		X		


8. MEDICAL EMERGENCY PROCEDURES

LINE MEDICAL EMERGENCY:
 Crew Supervisor contact Division Supervisor/Operations with patient complaint, condition and location.
 Division Supervisor/Operations contacts Communication:

- Division Supervisor/Operations to use "injury or incident communication protocol" on next page
- Division Supervisor/Operations will run medical emergency on command channel
- Communications will contact the Medical Unit Leader on Command channel.
- Medical Unit Leader will:
 1. Have communications dispatch ground/air transport resources
 2. Notify receiving hospital of injury status.
 3. Develop primary and contingency transport plan
 4. Notify Incident Commander, Safety, Logistics and Operations

CAMP MEDICAL EMERGENCY:
 Contact Communications with patient complaint/condition and location, via LOGs Net

- Medical Unit contacts:
 - Safety
 - Logistics
 - Operations
- Medical Unit Leader will:
 1. Contact Communications to dispatch ground/air transport resources
 2. Notify receiving hospital of injury status
 3. Develop primary and contingency transport plan

206 ICS	9. PREPARED BY: (Medical Unit Leader) Doug Stuart (MEDL) <i>[Signature]</i> Jeff Brooks MEDL(T) <i>[Signature]</i> Chris Schilling MEDL(T) <i>[Signature]</i>	10. REVIEWED BY: (Safety Officer) CIIMT 4 Safety Officer (SOF1) <i>[Signature]</i> SOF2 <i>[Signature]</i> Ron Riise	
----------------	---	--	---

Injury or Incident Communications Protocol

DECLARE: Medical Emergency or Non-emergency Medical transport

Best transport method: (circle) Ambulance Helicopter Vehicle

Location: (Div. & Lat / Long) _____

GPS Format: WGS84 Degrees, Decimal, Minutes

Situation _____

Any special equipment required _____

Number of injured _____ Type of injuries _____

Closest pick up point (DP, Helispot) _____

Level of consciousness _____ Resp. _____ Pulse _ BP _____ Weight _
(alert & oriented x 1-4)

Injury _____ Agency (No Names) _____

Medical History/Allergies _____

Air Transportation Triage

	<i>Ground or Air Ambulance to Hosp.</i>	<i>Transport to Med Unit</i>
<i>Mechanism</i>	<i>Hit by a falling tree or large branch Fall of 10' or more Insect bite with shortness of breath Signs of heat stroke (hot, dry, disoriented) Burn Injury greater than 1% body area</i>	<i>Minor dehydration Cut or laceration with bleeding controlled Minor bites and Stings Minor burns</i>
<i>Area Injured</i>	<i>Significant Blunt or Penetrating Trauma to Head, Neck, Chest, Abdomen or pelvis Any Arm or Leg fracture above the Joint</i>	<i>Minor blunt trauma Minor penetrating trauma Extremity sprains and strains Simple fracture below elbow or knee</i>
<i>Symptoms</i>	<i>Disoriented Chest Pain <u>or</u> Shortness of Breath Weak or absent radial pulse Pale, cold and sweating</i>	<i>Alert and oriented No shortness of breath Good pulses</i>

If air or ground ambulance is DELAYED:

Package and transport patient to rendezvous with ambulance. Re-route EMS helicopter to rendezvous point as appropriate.

If Declaring an "Incident within the Incident"

The closest DIVS will respond to manage the incident. They are responsible for giving an accurate size up, ensuring scene safety, setting priorities and initiating an appropriate response.

The closest Safety Officer and Line EMS will respond to the scene to assist the Branch Director or DIVS. Secure site and begin initial investigation when situation is stabilized.

FIRE SUPPRESSION REPAIR PLAN

Guidelines for dozer lines, hand lines, helispots, spike camps, drop points, water sources and safety zones:

Note: Where there is more rock than soil on control lines with slopes 5% or greater, waterbars are not needed as long as the non burnable debris on the line will dissipate the water enough to prevent channeling.

Stage 1) Soil and rocks will be put back on control lines and spread. Waterbarring will be completed where appropriate. No burnable material will be placed on the direct control lines.

Stage 2) In addition to stage 1 burnable material/debris will be placed on the lines and spread. Pull slash and downed trees over dozer line to reduce erosion and prevent unauthorized vehicular use.

Contingency line will be repaired as stage 2.

Obliterate any berms from the outside edge of existing fireline. Work material back onto the line. Do not sidecast berm material into or near stream channels.

Restore Forest roads to pre-fire suppression activities. Blade and grade travelway, remove berms, clean ditches and culvert inlets, chip roadside slash.

Repair fences damaged resulting from fire suppression activities.

Remove all improvised dams from drainages created for pumps and drafting. Area should be returned to pre fire suppression activities.

Water bars should be constructed at least 30 degrees perpendicular to the fireline. Make sure waterbars outlets are open.

Dozer/Hand line (% slope)	Maximum Distance Apart (feet)	Waterbars should be no further apart than this. When in doubt, put in more. Use only excavators for this work. Make sure waterbars outlets are open (often requires alittle shovel work).
1- 5	200	
6 - 20	125	
21 - 40	60	
41 - 60	40	
>60	25	

Watercourses:

All slash, soil, and debris deposited into watercourses resulting from fire suppression activities shall be removed and stabilized.

Concentrations of Green Timber

Areas that have concentrations of fallen or pushed over trees (not juniper) will need to be addressed. Trees over 10" DBH should have the root wad removed at the base and the tree placed with others in an organized fashion. All of the butts of the trees even, stacked on top of each other so that there 4-6 trees in a bundle. If possible the bundles will be parallel to the road and not overlapping.

Trees less than 10" DBH and root wads should be handled as slash/debris and used for covering dozer line to prevent vehicular travel and reduce erosion.

STANDARD OPERATING PROCEDURES—FINANCE SECTION 16 HOURS IS NOT A GUARANTEE – IT IS HOURS WORKED!!

WORK REST CYCLE

IT IS NATIONAL DIRECTION TO MEET 2 TO 1 WORK/REST RATIO (1 hour of sleep/rest for every 2 hours of work). Every effort shall be made to manage work hours so you don't exceed the maximum of 16 hrs. Work hours exceeding 16 hours shall be approved by your supervisor in advance, and a justification/mitigation form completed for review by Section Chief & approved by IC. It is each person's responsibility to comply with this direction to manage for fatigue and safety.

OPERATIONAL SHIFTS

Pay status for assigned overhead and crews on the fireline will not start prior to the posted briefing time and will terminate on arrival back in camp (except for debriefing—additional hours may be accrued by those required to attend debriefing). Supervisors will be allowed ½ hour prior to briefing and after return to camp to ready crew and equipment.

DUTY STATUS

Division/Group supervisors and Unit Leaders are responsible for establishing on and off duty status. The objective is a 2 to 1 work/rest ratio. Personnel will normally work, travel, and/or be placed on ORDERED standby 8 to 16 hours per day and be off duty 8 hours or more (breaks count towards 8 hrs). Off duty time will be in a non-pay status. Each federal employee is guaranteed **at least 8 hours** of pay status each 24-hour period (midnight to midnight) unless it is the first or last day of an assignment or stated otherwise in a contract or agreement.

PERSONNEL/EQUIPMENT TIME REPORTING

Personnel time will be reported to the Time Unit and daily once they are signed by the next level supervisor. OES resources will be monitored by OES Agency Rep (if assigned) for 2/1 Work Rest compliance. Situations entitling you to HAZARD PAY are to be noted in remarks (ie. HP=Uncontrolled Fireline, hovering hookups, low level flights, etc.)

Private Contracted Equipment time must be tracked on a Shift Ticket daily and hours on shift noted even if it is a daily rate. When swapping out operators you need to notify Finance as well as changing from single to double shift and vice versa.

Supervisor's - If you are responsible for daily tracking of equipment or personnel, please ensure you understand the agreement, and follow the rules provided in this document. Do not sign documents for resources you did not manage unless you have knowledge of their assignment hours.

MEAL AND OTHER WORK BREAKS

Compensable meal periods are the exception, not the rule (5 CFR 551.411 © and 29 CFR 785.19(a)). **Until the fire is controlled**, personnel on the fireline **MAY BE** compensated for meal periods if all of the following conditions are met: 1) The fire is not controlled and 2) The Operations Section Chief makes a decision that it is critical to the effort of controlling the fire that personnel remain at their post of duty and continue to work as they eat, and 3) The compensable meal break is approved by the supervisor at the next level and documented on CTR. For personnel in support positions, and fireline personnel **after control** of a fire, a meal period of at least 30 minutes must be ordered and taken for each work shift of eight hours or more. In those situations where personnel cannot be relieved from work and must remain at a post of duty, a meal period may be counted as time worked, which will be compensable. **If breaks are NOT able to be taken, CTR should have a statement in remarks explaining the situation.** Kitchen closes at 2200 so show dinner break unless you went off clock by 2130.



**A job well done is not quickly forgotten.
Take pride in all your accomplishments.**

Dana Simpson

661.477.4862

John Bohmer (t)

707.410.7936

TRAINING SPECIALIST MESSAGE

ALL TRAINEES

If you are in the process of being
Demobilized,
Check-in with the
Training Specialist to
Close out your documentation!

*Bring the following documents
To the Training Specialist*

- *A completed and signed ICS 225 or 226 Performance Evaluation*
- *Your Completed and Signed Taskbook!*

*I will be closing out all Trainee Documentation by
1200 HRS on*

August 13, 2017

Tom Reaves
Training Specialist

August 11, 2017

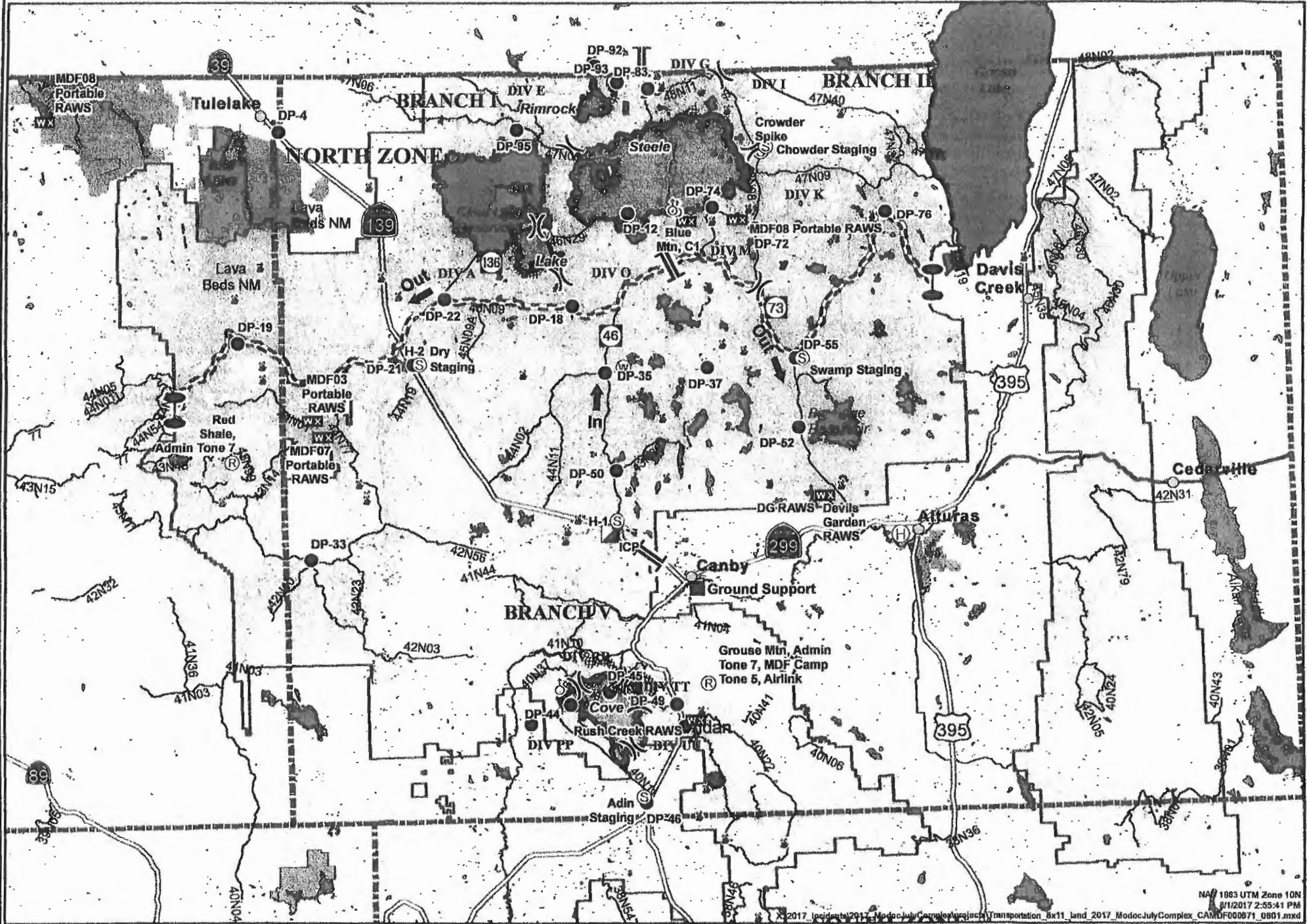


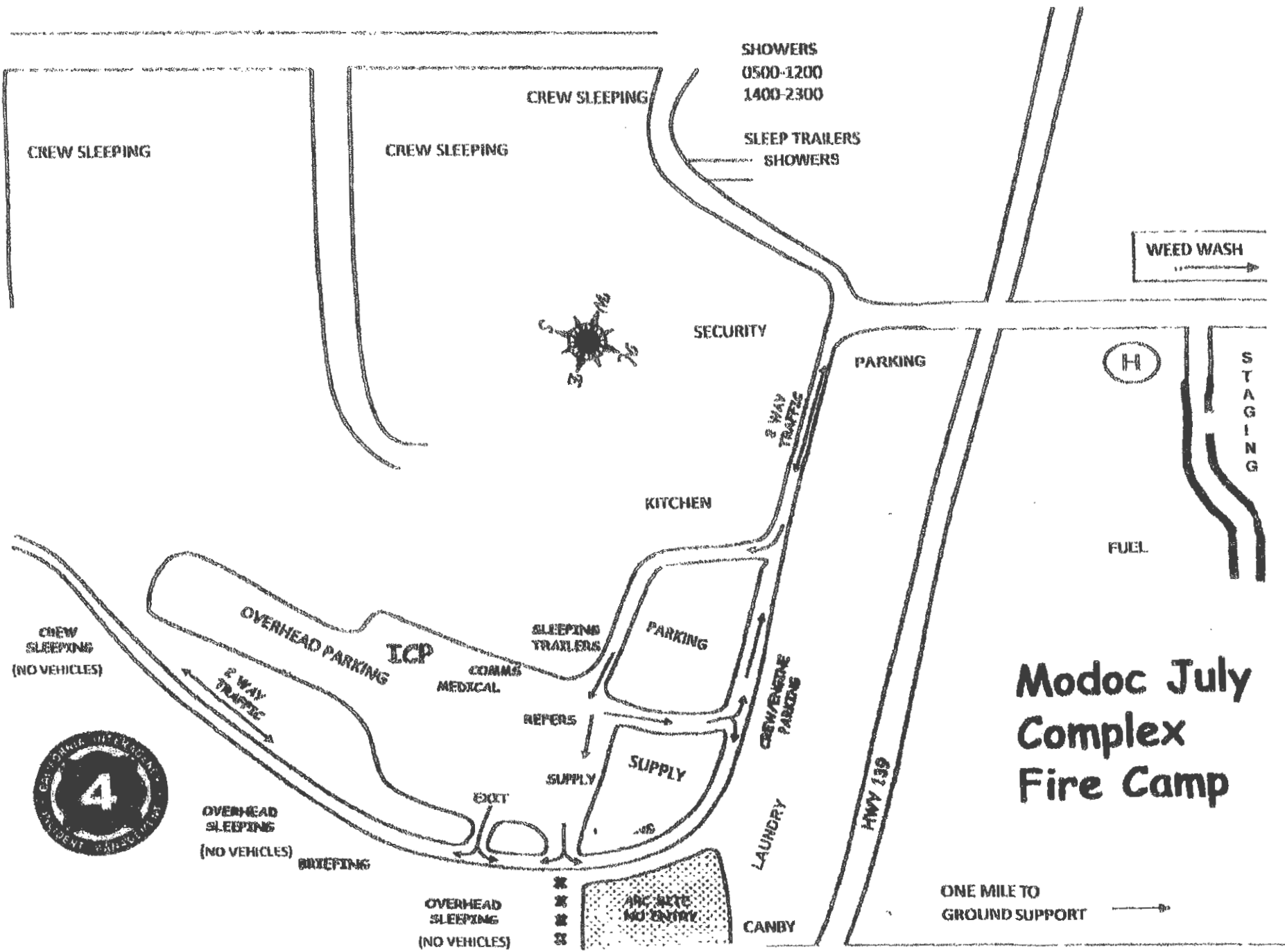
**MODOC JULY COMPLEX CA-MDF-000671
TRANSPORTATION MAP
AUGUST 1, 2017**

0 2½ 5 10



Miles





DIVISION FIRELINE ORDER FORM

Date & Time Order Was Placed	Order #/DIV	Mode of Delivery	Location of Delivery		
Current Date & Time:		<input type="checkbox"/> GROUND SUPPORT	DIV, DP, LZ, or Lat/Long		
Needed by:		<input type="checkbox"/> PICK UP IN SUPPLY			
		<input type="checkbox"/> HELLO			
Order received in COMM by:			Time:		
Order received in SUPPLY by:			Time:		
Order Shipped by TRANS or PU in Supply:			Time:		
PLEASE ORDER BY ITEM NUMBER					
<p>*Hose Kit A, contains the following: 10 RO 1½" Hose; 10 RO 1" Hose; 10 EA 1½" Gated Wyes; 10 EA 1½" to 1" Reducers; 10 EA 1" Nozzles</p>					
Item	Item	Quantity	Item	Item	Quantity
1	*Hose Kit A, 1000' Hose/lay		28	Fusee, BX	
2	Hose, 1½", 100'		29	Batteries, AA, PG (24 PG/BX)	
3	Hose, 1", 100'		30	Ribbon, Flagging (Specify Color)	
4	Hose, Garden ¾", 50'		31	Shovel	
5	Nozzle, KK Type, 1½"		32	Pulaski	
6	Nozzle, KK Type, 1"		33	Combi-Tool	
7	Nozzle, Forester, 1"		34	McCloud	
8	Nozzle, Garden ¾"		35	Washcloth, waterless, cleansing	
9	Wye, Gated 1½"		36	Sprinkler Kit	
10	Wye, Gated 1"		37	Mop-Up Kit, 3-wand	
11	Wye, Gated ¾"		38	Chainsaw Kit (TRACKABLE)	
12	Inline Tee, 1½"x1"		39	Water, Cubies	
13	Reducer, 1½"x1"		40	Water, Bottled, Cases	
14	Reducer, 1"x¾"		41	Gatorade, Bottled/Cases	
15	Shut-off Valve, ¾"		42	MRE's (12/BX)	
16	Foam, 5 GL			ADD ANYTHING NOT LISTED	
17	Backpack Pump				
18	Pumpkin, 1500/3000/6000 GL				
19	Folding Tank, 1000/1500 GL				
	PUMP KITS				
20	Lightweight (TRACKABLE)				
21	Mark III (TRACKABLE)			ACCOUNTABILITY PROPERTY #'S	
22	Fuel, Unleaded, 5 GL Can				
23	Fuel, Drip Torch, 5 GL Can				
24	Fuel, Diesel, 5 GL Can				
25	2-Cycle Oil, PT				
26	Bar Oil, QT				
27	Drip Torch, EA				
SPECIAL NOTES					

FIRE REPLACEMENT PROCEDURES

Submit requests for all incident replacements on a 213, General Message:

- Separate cache from non-cache items on separate 213's!
- Include explanation for lost or damaged items.
- Include DIVS signature on the 213 to verify the item(s) has/have been lost or damaged and support the circumstances surrounding it.
- For stolen items, contact your supervisor and Security Manager as soon as practical.

FOR CACHE ITEMS

Requesting Resource is NOT Being Demobed and Requested Items ARE Available in Supply:

- R&D shall fill request and note on the 213.

Requesting Resource is NOT Being Demobed and Requested Items are NOT Available in Supply.

- The Supply Unit will place an order for the requested items through the regular cache order process on the incident. The order will be shipped to the incident and replacement will take place at the Supply Unit and noted on the 213.

Requesting Resource IS Being Demobed and Requested **CACHE** Items are NOT in Stock in Supply:

- Along with the 213, complete an *OF-315, Incident Replacement Requisition* for cache items only and take to SPUL for review and approval. Include the requesting resources' email on the form so the Resource Order can be emailed to the Requesting Resource.
- The SPUL will issue S#'s pending receipt and verification of proper documentation for cache items.

NON-CACHE Items – This is the Important Part!!!

Non-Cache items include any item not available through the National Cache System.

Lost, damage, or destroyed government non-cache property shall be reported to the appropriate DIVS or higher-level overhead within 24 hours of occurrence. Stolen property shall be reported to the Security Manager. The requesting resource shall complete a 213 and *OF-289, Property Loss and Damage Report – Fire Suppression*, and include the following:

- All witnesses shall document the facts and circumstances of the loss or damage on the OF-289. Use additional paper if needed. Explanations shall be detailed and thorough.
- The requesting resource will take the 213 and OF-289 to the Comp/Claims Unit Leader (COMP) for review. The COMP will make a determination based up on the documentation presented and other information provided by the requesting resource.
- Approval for replacement is the responsibility of the incident agency and may be delegated to the Incident Management Team.
- If the replacement request is approved, the replacement cost will be limited to cache equivalent value. This value will be reflected on the Resource Order.
- Items that do not have a like-item in the cache will be reviewed and approved at the discretion of the FSC or Incident Business Advisor, as delegated by the Agency Administrator.

USDA Forest Service Pacific Southwest Region



Outreach Notice Modoc National Forest

2017 Fall Centralized Fire Hire Numerous Fire Positions

The Modoc National Forest will soon be filling Numerous Fire Positions (listed in the table below), with duty locations of Alturas, Adin, Canby, Cedarville and Tulelake, California. This notification is being circulated to inform prospective and interested applicants of this upcoming opportunity. Please see the following information on the positions and the Modoc National Forest.

Announcements for these positions will open on August 11, 2017

To apply for any of these positions:

- 1) Go to USAJOBS (must set up and have a USAJOBS profile) <https://www.usajobs.gov/>
 - a. Search/locate the announcement number;
 - b. Select position(s) and location(s) you are interested in and begin the application process.
- 2) Complete and submit your application prior to 8:59 Pacific Time or 11:59 p.m. Eastern Time August 25, 2017 at 20:59 Pacific Standard Time
- 3) All announcements flown under Merit authority will **also** be advertised using the Land Management Workforce Flexibility Act (LMWFA) for eligible applicants. So along with Forest Service-wide applicants already in career or career-conditional appointments, temporary employees who meet the LMWFA eligibility requirements may also apply to the merit announcement. Additional information and requirements on LMWFA can be found by going to the HRM LMWFA website at <http://fswweb.asc.fs.fed.us/HRM/employment/LMWFA.php>

Candidates are encouraged to read the announcement thoroughly to ensure you are applying to the correct announcement, as some position titles appear similar. Applicants will need to attach any required supporting documents (IQCS Master Record, DD-214, etc.)

The following positions are the known vacancies:

Position	REGIONAL GROUP ANNOUNCEMENT NUMBERS G will be for Merit & DP will be for Demo positions.	Duty Location
Engineering Equipment Operator/Fire Dozer	17-FIREFALL-EQOPTR-10G & DP	Adin
Forestry Technician Fire Engine Operator (FEO) GS-0462-07	17-FIREFALL-FEO(H)-7G	Alturas
Lead Forestry Technician Assistant Fire Engine Operator (AFEO)	17-FIREFALL-AFEO-6G & DP	Alturas
Supervisory Forestry Technician/Asst Superintendent	17-FIREFALL-IHCASST-78G	Canby
Frsty Aid GS-03, Forestry Techncn GS-4/5	17-FIREFALL-WFAP-5G & 17-FIREFALL-WFAP-345DP	Adin, Alturas, Canby, Cedarville, Tulelake

Candidates are encouraged to apply to any position/location on the Forest, whether a vacancy exists or not. Positions that become vacant during this process may also be filled immediately through a "back filling" process.

Modoc July Complex**3 Day Tentative DMOB*******PLEASE ARRIVE TO DMOB AT SCHEDULED TIME**********REMINDER ALL AIR TRAVEL GIVE DMOB 48 HOUR NOTICE*****

REQ #	RESOURCE NAME	KIND	DEMOB DATE	RELEASE TIME
E-108	ENG6 PACIFIC OASIS 25	ENG6	8/11	6:00
O-103	DAVIS, DONALD M	PIO2	8/11	6:00
O-104	KNIGHT II, GILBERT	PIO2	8/11	6:00
O-116	COLLINS, TIM A	HEQB	8/11	6:00
O-206	BENECH, MARIA	PIOF	8/11	6:00
E-144	ENG6 AZ BR-242	ENG6	8/11	6:00
C-72	IMPERIAL FORESTRY	CRW2	8/11	6:30
C-63	MQ FRANCO	CRW2	8/11	6:30
E-58	GET WET	WTS2	8/11	6:30
E-146	LARRANAGA	WTS2	8/11	6:30
E-169	ENG3 TNF 17	ENG3	8/11	6:30
O-114	WALLACE, MICHAEL	HEQB	8/11	7:00
E-14	CROSS TRUCKING	WTS2	8/11	7:00
E-291	BENS TRUCK	WTS2	8/11	7:00
E-262	PETERS INC.	WTS2	8/11	7:00
C-71	PACIFIC COAST	CRW2	8/11	7:00
E-322	NMN35 # 32	ENG6	8/11	7:00
O-163	YOO, DON	FEMT	8/11	7:30
O-169	BERNARD, ANDREW H	DIVS	8/11	7:30
O-486	WINFORD, KRISTIN	ICT5	8/11	7:30
E-321	TIMBERLINE	ENG6	8/11	7:30
E-7	BUSHEY	DOZ2	8/11	7:30
O-412	MELLOR, JAMES S	HEQB	8/11	7:30
O-166	CHARNON, TIM	DIVS	8/11	8:00
O-172	WINFORD, KRISTIN	HEQB	8/11	8:00
O-263	BLOM, GUY	TFLD	8/11	8:00
O-178	CORBIN, DAVID R	COMT	8/11	8:00
O-236	HUMPHREY, KYLE	TFLD	8/11	8:00
E-141	INBOUND #4	ENG6	8/11	8:30
E-71	SUSANVILLE TOWING	WTS2	8/11	8:30
E-267	DARRAH LOGGING	WTS2	8/11	8:30
E-263	YREKA	WTS2	8/11	8:30
E-75	PICKUP - T1 - SIERRA	PU	8/11	8:30
O-180	FRYE, SUSAN LYNN	READ	8/11	9:00
O-404	DUSTIN BROWN	FALM	8/11	9:00
O-403	MIKE REUSE	FALM	8/11	9:00
E-274	BENS TRUCK	DOZ2	8/11	9:00
E-271	BENS TRUCK	DOZ2	8/11	9:00
O-468	WOODMAN, HEATHER D	SOFR	8/11	10:00
O-35	WILLIAMS, DENISE	RCDM	8/11	10:00
S-7106	P.O. BAHN & SONS	MEC	8/11	10:00
O-19	LANE, SHARON K	PTRC	8/11	12:00
O-326	KAMMAN, JASON	FOBS	8/11	12:00
O-137	GARDNER, JEFF L	PIOF	8/11	12:00
O-177	STACY, DEBRA JEAN	RADO	8/11	14:00
O-422	VANSCIVER, JOHN	COMT	8/11	15:00
O-146	WHITE, CHARLES L	SOFR	8/11	15:00
O-140	BEAN, PATRICIA DEE	PIO2	8/11	18:00
E-232.1	LANGENDERFER, DAN	DZOP	8/11	18:00

Modoc July Complex**3 Day Tentative DMOB*******PLEASE ARRIVE TO DMOB AT SCHEDULED TIME**********REMINDER ALL AIR TRAVEL GIVE DMOB 48 HOUR NOTICE*****

REQ #	RESOURCE NAME	KIND	DEMOB DATE	RELEASE TIME
O-51	RIISE, AARON	SOFR	8/12	6:00
C-36	CRW2 GRAYBACK	HC2	8/12	6:00
A-53	TOWER TECH AIR	SPT	8/12	6:00
O-233	BRUNK, JESSE	DIVS	8/12	6:00
O-175	WILSON, TARA	RADO	8/12	6:00
C-50	CRW2IA LASSEN 9	HC2I	8/12	6:30
E-41	FUEL TENDER - T1 - ED	FT1	8/12	6:30
E-124	OUIMETTE'S MOBILE	MEC	8/12	6:30
C-51	CRW2IA EAGLE LAKE	HC2I	8/12	7:00
E-174	SHOWER - B & T	SHW	8/12	7:00
E-132	HANDWASH STATION	HNDW	8/12	7:00
E-136	DOZ2 LPF 3	DOZ2	8/12	7:00
E-208	WTS1 OILAR PATRICK	WTS1	8/12	7:30
E-155	FRONTLINE MEDICAL	AMBU	8/12	7:30
E-209	WTS1 BEN'S TRUCK	WTS1	8/12	7:30
E-138	ENG3 GRAYBACK E26	ENG3	8/12	7:30
E-173	WTS2 WILLMOREAG	WTS2	8/12	8:00
E-338	ENG3 MDF 82	ENG3	8/12	8:00
O-106	WELCH, DAVID	SOF2	8/12	8:00
O-149	MOORE, DAN J	FEMP	8/12	8:30
O-152	LONG, JACOB	FEMP	8/12	8:30
O-160	SUTTON, DEREK	FEMP	8/12	8:30
O-162	BARLOW, LARRY	FEMT	8/12	9:00
O-165	HUDSON, ROYCE	FEMT	8/12	9:00
O-187	FOWLER, KARL	TFLD	8/12	9:00
O-415	SHECKELLS, GORDON L	SEC1	8/12	9:00
O-208	BARRETT, JOANNE	SCKN	8/12	9:30
O-210	SILVA, STEVE	STEN	8/12	9:30
O-221	THOMPSON, CHRISTINE	SOFR	8/12	9:30
O-228	SVINARICH, JOE	READ	8/12	10:00
O-234	LARSON, KRIS LEE	DIVS	8/12	10:00
O-240	OSTMANN, DANIEL	DIVS	8/12	10:00
O-265	BATEMAN, LEVI	REAF	8/12	10:30
O-179	GAMON, JUAN JOSE	INCM	8/12	12:00
O-211	RIGGIN, JEFFREY DEANS	TFLD	8/12	12:00
O-141	ZWIERZCHOWSKI, JOSEPH DANIEL	PIO1	8/12	15:00
O-207	MILLER, LARCI	RCDM	8/12	16:00

**Modoc July Complex
3 Day Tentative DMOB**

*****PLEASE ARRIVE TO DMOB AT SCHEDULED TIME*****

*****REMINDER ALL AIR TRAVEL GIVE DMOB 48 HOUR NOTICE*****

REQ #	RESOURCE NAME	KIND	DEMOB DATE	RELEASE TIME
A-72	HELICOPTER - T2S - 58HJ	HEL2	8/13	6:00
C-29	CRW CAMP SHASTA 20	CC	8/13	6:00
C-52	CRW1 SPRINGVILLE IHC	HC1	8/13	6:00
E-142	ENG6 AZ E-362	ENG6	8/13	6:00
E-145	ENG3 AZ CEA V570	ENG3	8/13	6:00
E-182	ENG13 HIA 9532	ENG3	8/13	6:30
E-183	ENG6 ANF 38	ENG6	8/13	6:30
O-148	GOOD, MICHAEL ERIC	OSC2	8/13	6:30
O-190	LAWSON, LOGAN JR	TFLD	8/13	6:30
O-197	NOBLES, JOHN	SOFR	8/13	6:30
O-209	ROBERTS, IVY J	EQTR	8/13	7:00
O-258	CORNWALL, KELLY S	TFLD	8/13	7:00
O-269.24	RHODES, BRIAN	OSC1	8/13	7:00
O-269.33	BUNCH, NICK	DIVS	8/13	7:00
O-269.57	GERBOTH, DAVID PAUL	PSC1	8/13	7:00
O-269.60	SCURI, JOSEPH GABRIEL	RESL	8/13	7:30
O-269.63	CAMACHO, JEREMY	RESL	8/13	7:30
O-269.69	CLERVI, CHRISTOPHER ARTHUR	GISS	8/13	7:30
O-270	BOHMER, JOHN ALBERT	HRSP	8/13	7:30
O-278	MONTEJANO, JOSEPH	FEMP	8/13	7:30
O-297	ALBERTSON, CLINT E	GSAN	8/13	7:30
O-300	LEE, NICK E	EQPM	8/13	8:00
O-348	OPLIGER, ROCKY	ICT1	8/13	8:00
O-399	SALVATE, JOHN	AREP	8/13	8:00
O-269.59	MARX, ANN M	PSC1	8/13	12:00

