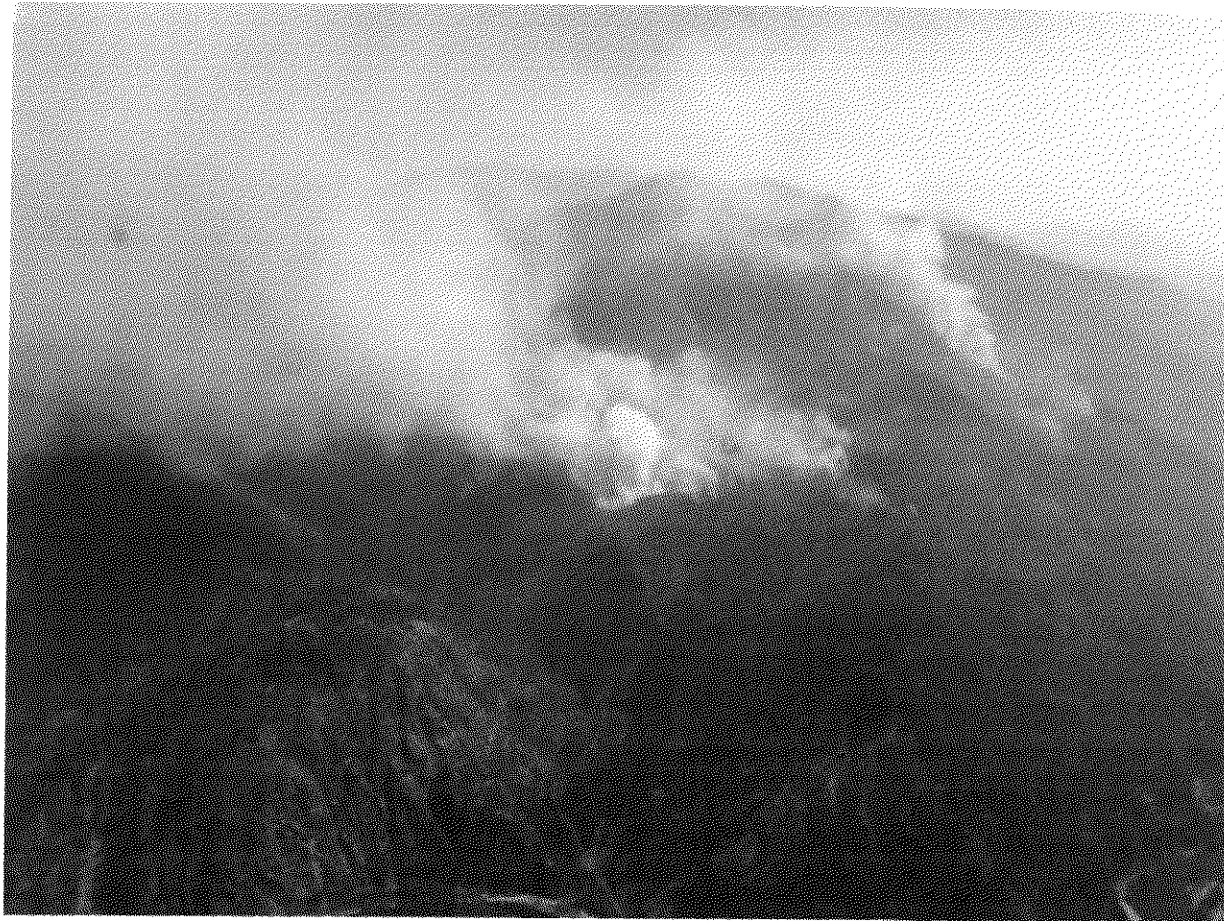


# **Orleans Complex - Ukonom Fire**

## **Incident Action Plan**

**Monday, July 31, 2017**

**0600 – 2000**




Looking up Ukonom Creek

- ✓ **Strategies that mitigate Heat Injury (6 MFS)**
  - Know your Risk Factors
  - Pre-hydration
  - Hydration
  
- ✓ **Steep Terrain**
  - Concentrate on foot placement to limit slips, trips and falls
  
- ✓ **Pre-planning for Medical Emergencies**
  - What are we going to do if somebody gets hurt?
  - How will we get them out of here?
  - How long will it take to get them to a hospital?
  - Utilize block 6 on Med Plan for your Pre-Plan

**CA – SRF– 000741(0510) P5K73417**

**Six Rivers National Forest**

**Northern California Incident Management Team 1**

INCIDENT OBJECTIVES	1. Incident Name Orleans Complex	2. Date 07/30/2017	3. Time 2100
4. Operational Period July 31, 2017 DAY SHIFT			
<p><b>CONTROL OBJECTIVES</b></p> <p>1) Keep the Ukonom Fire:</p> <ul style="list-style-type: none"> <li>• East of the Klamath River to protect private property, infrastructure (Hwy 96), and cultural resources.</li> <li>• South of the Orleans, Happy Camp District boundary to minimize spread to Klamath National Forest and protect cultural resources.</li> <li>• West of Ukonom Mountain to minimize spread into the Marble Mountain Wilderness and protect cultural resources.</li> <li>• North of Division A dozer line to protect private property and cultural resources.</li> </ul> <p><b>MANAGEMENT OBJECTIVES</b></p> <p>1) Prior to engagement, stop and discuss strategies and tactics to ensure sound risk management principals are in place to provide for firefighter and public safety.</p> <p>2) All fire suppression operations will be conducted in close coordination with Designated Tribal Representatives and READs.</p> <p>3) Establish and strengthen cooperator, partner, and stakeholder relationships.</p> <p>4) Minimize impacts to cultural resources, infrastructure, and private property inholdings.</p>			
6. Weather Forecast for Period			
<ul style="list-style-type: none"> <li>• See attached weather forecast.</li> </ul>			
7. General Safety Message			
<ul style="list-style-type: none"> <li>• See attached safety messages.</li> </ul>			
8. Attachments (mark if attached)			
<input checked="" type="checkbox"/> Organization List - ICS 203	<input checked="" type="checkbox"/> Medical Plan - ICS 206	<input checked="" type="checkbox"/> Weather	
<input checked="" type="checkbox"/> Div. Assignment Lists - ICS 204	<input checked="" type="checkbox"/> Incident Map	<input checked="" type="checkbox"/> ICS215a	
<input checked="" type="checkbox"/> Communications Plan - ICS 205	<input checked="" type="checkbox"/> ICS 220	<input type="checkbox"/> Rehab Considerations	
9. Prepared by (Planning Section Chief) Walter Herzog		10. Approved by (Incident Commander) Curtis Coats 	

<b>ORGANIZATION ASSIGNMENT LIST</b>		Ground Support Unit	Kristen Lark, Harry Zabel
1. Incident Name <b>Orleans Complex</b>		Communications Unit	John Chapman
2. Date July 30, 2017	3. Time 2100	Medical Unit	Joshua Ramey
4. Operational Period Day Shift, <b>July 31, 2017</b>		Receiving & Distribution	Fred Johnson
Position	Name	Security Manager	Michael Turner
5. Incident Commander and Staff		Food Unit	Jay Westlake
Incident Commander	Curtis Coots, Jaime Gamboa (t)	<b>9. Operations Section</b>	
Deputy	Paul Bannister	Operations	Don Fregulla, Mike Klimek (t)
Safety Officer	Michele Tanzi, Jeff Barnhart	Planning Ops	Curt Lindstrand
Information Officer	Barbara Rebiskie, Shawn Compton	a. Division/Groups	
Liaison Officer	Kent Swartzlander	<b>East Zone-Ukonom Fire</b>	
Human Resources		Division/Group A	Richard Inghram, Pete English (t)
6. Agency Representative		Division/Group F	Matthew Prentiss
Agency Administrator	Nolan Colegrove	Division/Group M	Billy Covert
Karuk Tribal Rep	Earl Crosby	Division/Group Z	Jack Sevelson, Leland Ratcliff (t)
BIA Agency Rep	Greg Perry	Structure	Tim Ritchey
West Zone READ	Andrew Spain	b. Division/Groups	
Ukonom Fire READ	Corrine Black	<b>West Zone Confinement</b>	
		Division/Group A	James Courtright, Josh Eichamer (t)
		Division/Group Z	
		Division/Group	
		Division/Group	
		Division/Group	
		Division/Group	
		Division/Group	
		c. Air Operations Branch	
		Air Operations Branch Director	Bruce Wicks
7. Planning Section		Air Attack Supervisor	Brian Rodgers
Chief	Walter Herzog	Air Support Supervisor	Steve Beall, Mike Yearwood (t)
Deputy	Alan Taylor	Helicopter Coordinator	
Resources Unit	Rita Mustatia	Air Tanker Coordinator	
Situation Unit	Eric Kronner, Dan Wooden (t)	<b>10. Finance Section</b>	
Demobilization Unit	Gary Deboi	Chief	Lois Charlton, Debbie Parlin (t)
Training		Time Unit	Kris Armstrong (t)
CTSP	George Steel	Equipment Unit	Larry Ames
GIS	Elizabeth Hale, Jill Beckman	Cost Unit	Lou Ann Charbonnier (t)
FBAN	Bob Patton	Compensation/Claims Unit	Debbie McIntosh
IMET	Dan Harty	Procurement	
SCKN	Jennifer Martin (t)	Prepared by (Resource Unit Leader) <b>Gary R. Deboi</b>	
8. Logistics Section			
Chief	Mike Jellison		
Deputy	Greg Moon, Ken Kumpe		
Supply Unit	David Alicea		
Ordering	Aaron Woods		
Facilities Unit	Jeff Huhtala, Frank DelCarlo		

<b>DIVISION ASSIGNMENT LIST</b>		1. Branch		2. Division/Group <b>UKONOM FIRE A pg1</b>			
3. Incident Name <b>ORLEANS COMPLEX EAST ZONE</b>		4. Operational Period <b>DAY OPERATIONS</b> Date: 07/31/2017 Time: 0600-2000					
5. Operations Personnel							
Operations Chief	DON FREGULIA, MIKE KLIMEK (T)			Division/Group Supervisor	RICHARD INGRAM, PETE ENGLISH (T)		
Planning Ops	CURT LINDSTRAND			Air Support	BRUCE WICKS		
6. Resources Assigned this Period							
Strike Team/Task Force/ Resource Designator	Leader	Last Shift	Number Persons	Trans. Needed	Drop Off PT./Time	Pick Up PT./Time	
HC1 TRUCKEE IHC	BOBBY HUBBY	8/2	20	N	0700	1900	
HC1 FEATHER RIVER IHC C-6	LELAND RATCLIFF	8/7	19	N	0700	1900	
HC1 SMITH RIVER IHC C-4	JERIMIAH MENDEZ	8/8	20	N	0700	1900	
HC1 MAD RIVER IHC C-13	TED HAIR	8/1	20	N	0700	1900	
HC2IA FISH LAKE	RICHARD NIELSON	8/5	20	N	0700	1900	
S/T ENG 3675C E-71	DAN EISZELE	8/3	27	N	0700	1900	
DOZ LONESTAR E-4 W/TRAN	JULIO COTA	8/10	1	N	0700	1900	
DOZ BEN'S E-51 W/TRANS	KEITH FLASH	8/12	2	N	0700	1900	
MAST NORTH STATE E-13 W/TRANS	HOYT BAKER	8/11	2	N	0700	1900	
MAST ALLEN'S E-14 W/TRANS	JOHN ALLEN	8/11	2	N	0700	1900	
CHIP ZEBBS TREE SERVICE E-19	LEAF QUINN	8/10	1	N	0700	1900	
WT2 KISER E-55	KYLE KISER	8/12	1	N	0700	1900	
WT2 DARAH E-56	WAYNE VIRAG	8/12	1	N	0700	1900	
WT2 DARAH E-57	STEVE DARGER	8/12	1	N	0700	1900	
WT2 DARAH E-73	DAVE KAUNDART	8/12	1	N	0700	1900	
WT2 DARAH E-75	TAMMI QUINONES	8/12	1	N	0700	1900	
FALM NORTH ZONE O-31	LEVI BROWN, ERIC BROWN	8/10	2	N	0700	1900	
FALM NORTH ZONE O-109	STEVE DAVIS, NICK STACHER	8/12	2	N	0700	1900	
7. Control Operations Prepare indirect line for firing operations. Assess opportunities for additional indirect lines. Mitigate hazard trees.							
8. Special Instructions Consult with READ/Tribal Consultant for any new line construction. Stay within existing dozer line footprint.							
9. Division/Group Communication Summary							
Function	Frequency	Tone	Channel	Function	Frequency	Tone	Channel
Command 7	RX 166.6125 TX 168.4000	136.5	7	TAC 1	RX 168.0500 TX 168.0500	136.5	1
A/G CMD	RX 169.2000 TX 169.2000	none	13				
Prepared by (Resource Unit Leader) Rita Mustatia			Approved by (Planning Section Chief)		Date 7/30/2017	Time 2130	

DIVISION ASSIGNMENT LIST			1. Branch	2. Division/Group <b>UKONOM FIRE A pg2</b>			
3. Incident Name <b>ORLEANS COMPLEX EAST ZONE</b>			4. Operational Period <b>DAY OPERATIONS</b> Date: 07/31/2017 Time: 0600-2000				
5. Operations Personnel							
Operations Chief	DON FREGULIA, MIKE KLIMEK (T)		Division/Group Supervisor	RICHARD INGRAM, PETE ENGLISH (T)			
Planning Ops	CURT LINDSTRAND		Air Support	BRUCE WICKS			
6. Resources Assigned this Period							
Strike Team/Task Force/ Resource Designator	Leader	Last Shift	Number Persons	Trans. Needed	Drop Off PT./Time	Pick Up PT./Time	
FALM NORTH ZONE O-110	GARY BURG, ROBERT HALL	8/12	2	N	0700	1900	
FALM NOR CAL FIRE O-112	TRAVIS GUY, JIMMY GORMAN	8/12	2	N	0700	1900	
FALM NORTH ZONE O-151	MATT FOUSHEE, CARL HALL	8/13	2	N	0700	1900	
FALM O-111	MICHAEL MOEN, ANDREW MOEN	8/13	2	N	0700	1900	
FELB	GAIL		1	N	0700	1900	
FELB (T)	WOLF		1	N	0700	1900	
TFLD O-146	MEREDITH CHILDS	8/5	1	N	0700	1900	
TFLD	BRYAN LANNING (T)	8/11	1	N	0700	1900	
TFLD O-43	COLTEN MOOR	8/12	1	N	0700	1900	
EMT O-48	DANIEL LASSOTTA	8/11	1	N	0700	1900	
PARAMEDIC O-139	STEVE MARLOCK	8/13	1	N	0700	1900	
SOFR O-95	STEVE FEMMEL	8/1	1	N	0700	1900	
REAF O-88	LEE MORGAN		1	N	0700	1900	
READ O-89	TODD JOHNSON		1	N	0700	1900	
7. Control Operations Prepare indirect line for firing operations. Assess opportunities for additional indirect lines. Mitigate hazard trees.							
8. Special Instructions Consult with READ/Tribal Consultant for any new line construction. Stay within existing dozer line footprint.							
9. Division/Group Communication Summary							
Function	Frequency	Tone	Channel	Function	Frequency	Tone	Channel
Command 7	RX 166.6125 TX 168.4000	136.5	7	TAC 1	RX 168.0500 TX 168.0500	136.5	1
A/G CMD	RX 169.2000 TX 169.2000	none	13				
Prepared by (Resource Unit Leader) <b>Rita Mustatia</b>			Approved by (Planning Section Chief)		Date <b>7/30/2017</b>	Time <b>2130</b>	

<b>DIVISION ASSIGNMENT LIST</b>			1. Branch		2. Division/Group <b>UKONOM FIRE F</b>			
3. Incident Name <b>ORLEANS COMPLEX EAST ZONE</b>			4. Operational Period <b>DAY OPERATIONS</b>					
			Date: 07/31/2017		Time: 0600-2000			
5. Operations Personnel								
Operations Chief		DON FREGULIA, MIKE KLIMEK (T)			Division/Group Supervisor	MATT PRENTISS		
Planning Ops		CURT LINDSTRAND			Air Support	BRUCE WICKS		
6. Resources Assigned this Period								
Strike Team/Task Force/ Resource Designator		Leader		Last Shift	Number Persons	Trans. Needed	Drop Off PT./Time	Pick Up PT./Time
S/T ENG 3630C E-46		PATRICK PRESTON		8/2	27	N	0700	1900
S/T ENG ORLEANS O-44		ANDREA GILHAM		8/13	1	N	0700	1900
INF ENGINE 31 E-64		JAMES BARBERI		8/13	5	N	0700	1900
SNF ENGINE 42 E65		MIKE SCHMALL		8/13	5	N	0700	1900
LNF ENGINE 16 E-68		JON PIERCE		8/12	5	N	0700	1900
TNF ENGINE 342 E-70		ZACH HUFF, JEREMY HIERONIMUS (T)		8/12	5	N	0700	1900
LNF ENGINE 36 E-69		MIKE SCHMALL		8/13	5	N	0700	1900
FEMT O-147		GAGE SCHLICE		8/13	1	N	0700	1900
FEMP O-154		JAMIE POOLE		8/13	1	N	0700	1900
7. Control Operations Assess structure protection needs along Hwy 96.								
8. Special Instructions Consult with READ/Tribal Consultant for any new line construction and with land owners when possible. Stay within existing dozer line footprint.								
9. Division/Group Communication Summary								
Function	Frequency	Tone	Channel	Function	Frequency	System	Channel	
Command 7	RX 166.6125 TX 168.4000	136.5	7	TAC 2	RX 168.2000 TX 168.2000	136.5	2	
A/G CMD	RX 169.2000 TX 169.2000	none	13					
Prepared by (Resource Unit Leader) Rita Mustatia			Approved by (Planning Section Chief)			Date 7/30/2017	Time 2000	

<b>DIVISION ASSIGNMENT LIST</b>			1. Branch		2. Division/Group <b>UKONOM FIRE M</b>			
3. Incident Name <b>ORLEANS COMPLEX EAST ZONE</b>			4. Operational Period <b>DAY OPERATIONS</b> Date: 07/31/2017 Time: 0600-2000					
5. Operations Personnel								
Operations Chief		DON FREGULIA, MIKE KLIMEK (T)		Division/Group Supervisor		BILLY COVERT, TIM RITCHEY		
Planning Ops		CURT LINDSTRAND		Air Support		BRUCE WICKS		
6. Resources Assigned this Period								
Strike Team/Task Force/ Resource Designator		Leader		Last Shift	Number Persons	Trans. Needed	Drop Off PT./Time	Pick Up PT./Time
HC1 MILL CREEK IHC C-21		JOHN ELLISON, GARY ALVARADO-AVILA (T)		8/13	20	N	0700	1900
HC2 FORTUNA 22 C-12		NORMAN GOODWIN		8/14	20	N	0700	1900
DOZ IAQUA E-5 W/TRANS		JAKE MOORE		8/9	1	N	0700	1900
DOZ MOBLEY E-11 W/TRANS					1	N	0700	1900
CHIP FIRESTORM E-21		KYLE VOTH		8/10	1	N	0700	1900
HEQB O-145		BRUCE ROBISON		8/2	1	N	0700	1900
HEQB		TBA			1	N	0700	1900
TFLD O-42		HOWARD ODEN		8/11	1	N	0700	1900
FALM O-113		JOSH BLACK, BRAD JACKSON		8/13	1	N	0700	1900
FELB O-106		MARC WILSON		8/13	1	N	0700	1900
EMT O-141		CHARLES MCGRAY		8/12	1	N	0700	1900
PARAMEDIC O-54		CHRIS RENSHAW		8/11	1	N	0700	1900
7. Control Operations Continue indirect line construction utilizing existing line toward Jacob's Ladder Trail. Mitigate hazard trees.								
8. Special Instructions Consult with READ/Tribal Consultant for any new line construction. Stay within existing dozer line footprint.								
9. Division/Group Communication Summary								
Function	Frequency	Tone	Channel	Function	Frequency	TONE	Channel	
Command 7	RX 166.6125 TX 168.4000	136.5	7	TAC 3	RX 168.6000 TX 168.6000	136.5	3	
A/G CMD	RX 169.2000 TX 169.2000	none	13					
Prepared by (Resource Unit Leader) Rita Mustatia			Approved by (Planning Section Chief)			Date 7/30/2016	Time 2140	

<b>DIVISION ASSIGNMENT LIST</b>			1. Branch		2. Division/Group <b>UKONOM FIRE Z</b>			
3. Incident Name <b>ORLEANS COMPLEX EAST ZONE</b>			4. Operational Period <b>DAY OPERATIONS</b> Date: 07/31/2017 Time: 0600-2000					
5. Operations Personnel								
Operations Chief		DON FREGULIA, MIKE KLIMEK (T)		Division/Group Supervisor		JACK SEVELSON, LELAND RATCLIFF (T)		
Planning Ops		CURT LINDSTRAND		Air Support		BRUCE WICKS		
6. Resources Assigned this Period								
Strike Team/Task Force/ Resource Designator		Leader		Last Shift	Number Persons	Trans. Needed	Drop Off PT./Time	Pick Up PT./Time
HC1 UKONOM IHC C-5		NATE NELMS		8/1	20	N	0700	1900
HC2IA VENTANA		TOM PLYMALE		8/9	19	N	0700	1900
HC2IA TUOLOMNE		MIKE LANIER		8/9	20	N	0700	1900
HC2 HIA CREW 1 O-138		AARON WILLIAMS		8/11	11	N	0700	1900
DOZ DARRAH E-6 W/TRAN		KEITH DARRAH		8/10	2	N	0700	1900
DOZ DARRAH E-7 W/TRAN		GARY QUINOVES		8/10	2	N	0700	1900
DOZ PETER'S E-52 W/TRAN					1	N	0700	1900
CHIP WELL EQUIPPED E-20		RON ADKINS		8/11	2	N	0700	1900
CHIP CUTWRIGHT E-22		TIM WRIGHT		8/10	2	N	0700	1900
MAST NORTHSTATE E-59		TANNER PARKS		8/13	2	N	0700	1900
HEQB O-16		SCOTT FLYNN		8/10	1	N	0700	1900
HEQB (t)		WALTER		8/9	1	N	0700	1900
HEQB		ZACH LIKINS		8/1	1	N	0700	1900
HEQB (t) O-59		DANIEL MAGUIRE		8/11	1	N	0700	1900
EMT O-47		KERRICK SOLLENSES		8/10	1	N	0700	1900
PARAMEDIC O-53		JOHN BISHOFF		8/11	1	N	0700	1900
SOFR O-52		GARY KEMP		8/12	1	N	0700	1900
REM 1 O-83		GEORGE PEREZ, JAMES QUEENAN		8/13	2	N	0700	1900
7. Control Operations Improve existing line along the 14N22 Road toward DP 20. Mitigate hazard trees. Assess opportunities for line to the east of DP.								
8. Special Instructions Consult with READ/Tribal Consultant for any new line construction. Stay within existing dozer line footprint.								
9. Division/Group Communication Summary								
Function	Frequency	Tone	Channel	Function	Frequency	Tone	Channel	
Command 7	RX 166.6125 TX 168.4000	136.5	7	TAC 5	RX 166.7250 TX 166.7250	136.5	4	
A/G CMD	RX 169.2000 TX 169.2000	none	13					
Prepared by (Resource Unit Leader) Rita Mustatia			Approved by (Planning Section Chief)			Date 7/30/2017	Time 2015	







<b>DIVISION ASSIGNMENT LIST</b>		1. Branch		2. Division/Group <b>WEST ZONE Confinement Div A</b>			
3. Incident Name <b>ORLEANS COMPLEX WEST ZONE</b>		4. Operational Period <b>DAY OPERATIONS</b> Date: 07/31/2017 Time: 0600-2000					
5. Operations Personnel							
Operations Chief		ICT3		JAMES COURTRIGHT, JOSH EICHAMER (T)			
Planning Ops		Air Support		BRUCE WICKS			
6. Resources Assigned this Period							
Strike Team/Task Force/ Resource Designator	Leader	Last Shift	Number Persons	Trans. Needed	Drop Off PT./Time	Pick Up PT./Time	
Karuk HC2IA C-10	TAYLOR SUPER		20	N	0700	1900	
SUMMIT WFM1 O-18	ALEX MIYAGISHIMA		9	N	0700	1900	
TFLD O-191	BILLY MCCALL		1	N	0700	1900	
TFLD (T) O-115	JAMESON COLLINS		1	N	0700	1900	
EMPF O-116	RON SANDLER		1	N	0700	1900	
EMT O-93	BRENT WEBER		1	N	0700	1900	
READ O-2	FRANK LAKE		1	N	0700	1900	
SOFR	TBA		1	N	0700	1900	
THSP O-192	TAMAR YOUNG		1	N	0700	1900	
READ O-38	ANDREW SPAIN		1	N	0700	1900	
FEMO O-90	TRISTAN KIEHL		1	N	0700	1900	
HERITAGE CONSULTANT O-1	HERMAN ALBERS		1	N	0700	1900	
7. Control Operations Scout and open trails. Utilize helicopter bucket drops on the Dillion fire to limit fire spread as needed. Brush out the East Fork of the Blue Trail from the 14N02 road trailhead to the Wilderness boundary. Identify previous hand and equipment lines, fuel treatment areas, and medivac and resupply sites.							
8. Special Instructions Coordinate and communicate efforts with the assigned READ and Designated Tribal Representative. Establish fuel sampling and weather monitoring locations. Turn in 214 Unit Logs Daily.							
9. Division/Group Communication Summary							
Function	Frequency	System	Channel	Function	Frequency	System	Channel
	See Communication plan						
Prepared by (Resource Unit Leader)			Approved by (Planning Section Chief)		Date	Time	
					7/30/2017	1000	

<b>DIVISION ASSIGNMENT LIST</b>		1. Branch	2. Division/Group <b>WEST ZONE Confinement Div Z</b>				
3. Incident Name <b>ORLEANS COMPLEX WEST ZONE</b>		4. Operational Period <b>DAY OPERATIONS</b> Date: 07/31/2017 Time: 0600-2000					
5. Operations Personnel							
Operations Chief		ICT3	JAMES COURTRIGHT, JOSH EICHAMER (T)				
Planning Ops		Air Support	BRUCE WICKS				
6. Resources Assigned this Period							
Strike Team/Task Force/ Resource Designator	Leader	Last Shift	Number Persons	Trans. Needed	Drop Off PT./Time	Pick Up PT./Time	
SUMMIT WFM1 O-18	ALEX MIYAGISHIMA		9	N	0700	1900	
READ O-38 (lead)	ANDREW SPAIN		1	N	0700	1900	
FEMO O-90	TRISTAN KIEHL		1	N	0700	1900	
HERITAGE CONSULTANT O-1	HERMAN ALBERS		1	N	0700	1900	
SOPL O-76	MIKE BEASLEY		1	N	0700	1900	
LTAN	CHRIS CHURCH		1	N	0700	1900	
EMT O-194	CHRISTINA HABASHI		1	N	07:00	19:00	
FEMP O-140	BEN SIGNOR		1	N	0700	1900	
7. Control Operations Scout and open trails. Utilize helicopter bucket drops on the Dillion fire to limit fire spread as needed. Brush out the East Fork of the Blue Trail from the 14N02 road trailhead to the Wilderness boundary.							
8. Special Instructions Coordinate and communicate efforts with the assigned READ and Designated Tribal Representative. Establish fuel sampling and weather monitoring locations. Turn in 214 Unit Logs Daily.							
9. Division/Group Communication Summary							
Function	Frequency	System	Channel	Function	Frequency	System	Channel
	See Communication plan						
Approved by Planning Section Chief					Date	Time	
					7/30/2017	1000	



# INCIDENT Weather Forecast

FORECAST NO: 4  
 PREDICTION FOR: Monday  
 SHIFT DATE: 7/31/17  
 0600 - 2000 PDT  
 TIME AND DATE  
 FORECAST ISSUED: 2000 PDT, 7/30/17

NAME OF FIRE: Ukonom Fire  
 UNIT: SRF  
 SIGNED: Dan Harty *Dan Harty*  
 Incident Meteorologist

**WEATHER DISCUSSION:** High pressure will continue to strengthen over the region bringing very hot temperatures to the fire area. An Excessive Heat Watch remains in effect through Wednesday due to the dangerous heat. Conditions will also trend a little drier with afternoon relative humidity down into the lower teens followed by moderate to poor overnight recovery from the mid-slopes to the ridges. Winds will be terrain influenced with calm to light winds in the mornings under the inversion. Southerly upvalley winds along the Klamath River Valley may become gusty at times during the afternoons and evenings. There is a slight chance for thunderstorms by Friday as a weak disturbance moves up the coast.

### WEATHER FORECAST for MONDAY:

WEATHER: Very Hot. Sunny, areas of smoke.  
 MAX TEMPERATURES: 96-106°  
 MIN HUMIDITY: 12 to 18%  
 20 FOOT WINDS:

**SLOPE/VALLEY** - Calm to light winds in the morning. Becoming upslope/upvalley 3-7 mph in the afternoon with southerly gusts around 12 mph possible along the Klamath River Valley.

**RIDGETOP** - Northeast 4-8 mph with gusts up to 15 mph possible in the morning.

**FORECAST for MONDAY NIGHT:** Areas of smoke...otherwise clear. Minimum temperatures 67-72°. Maximum relative humidity recovery 30-40% mid slopes and ridges, up to 70% in valleys. Upslope/upvalley 4-8 mph with gusts up to 12 mph in the evening becoming downslope 3-7 mph around 2100 pdt. Ridge winds northeast 3-7 mph with gusts to 15 mph possible late night into early Tuesday morning.

**OUTLOOK for TUESDAY and WEDNESDAY:** Very Hot. Sunny with areas of smoke. High temperatures increasing to 98-108. Lows 70-75. Minimum relative humidity 10-15% with overnight recovery of 25-35% mid slope and ridges (higher in the valleys). Winds generally terrain driven 4-8 mph with upvalley gusts up to 12 mph along the Klamath River Valley each afternoon and evening. Ridge winds northeast 5-8 mph with morning gusts around 15 mph possible.

## FIRE BEHAVIOR FORECAST

<b>FORECAST NUMBER 4</b>	<b>TYPE OF FIRE: Wildland Fire</b>
<b>FIRE NAME: East Zone Ukonom</b>	<b>OPERATIONAL PERIOD: Day shift July 31, 2017</b>
<b>DATE ISSUED: July 30, 2017</b>	<b>TIME ISSUED: 1900</b>
<b>UNIT: Six Rivers NF</b>	<b>SIGNED: Bob Patton</b> <b>FBAN</b> <i>Bob Patton</i>

**WEATHER SUMMARY:**      *\*\*\*Please See attached Fire Weather Forecast\*\*\**

**Max Temp:** 96-106

**Min RH:** 12-18%

**Winds:** 20'

Slope/valley: Calm to light winds in the morning becoming upslope/upvalley 3-7 mph in the afternoon with gusts to around 12 mph in the Klamath River drainage.

Ridgetop winds: Northeast 4-8 mph with gusts to 15 possible in the morning.

### GENERAL

The fire is burning in a 2008 fire scar with fuels consisting of brush up to 10'; snags; heavy dead and down; grass; short needle timber litter; tan oak; and timber overstory in the drainages.

Live fuel moisture in brush around 140%. We should be getting more current measurements soon.

ERC's are around the 86<sup>th</sup> percentile

Probability of ignition 60-90% depending on aspect and shading

### SPECIFIC FIRE BEHAVIOR

Fire behavior in the morning under the inversion should be minimal with slow backing and slow forward rate of spread in available fuels until the smoke lifts out. Yesterday afternoon most of the fire activity was occurring on the northern portion of the fire and was predominately heavy fuels burning out. There was very little forward spread to the south observed, and a large percentage of the fuels on the south have appeared to have burned out. Smoke production should be similar to yesterday with clearer skies prior to noon hopefully!

Fire growth has been perpetuated by rolling material on steep slopes igniting fuel and jackpots of heavy fuel below, spotting into snags, and making short runs through the brush.

**Division A and Z:** Today do not expect any significant spread to the south towards Ukonom Lookout and the 13N02 Road. The slopover in Thomas Creek yesterday was hammered by heavy helicopters and could possibly hold in place.

**Division F:** Fire will continue to persistently back downhill towards the Klamath River.

**Division M:** Fire will continue backing into Ukonom Creek. If the fire happens to cross the creek, the adjacent slope is fairly rocky with sparse fuels.

General rate of spread in available fuel could be 1-4 ch/hr with 1-6' flame lengths.

### AIR OPERATIONS

Smoke inversion could hamper air operations throughout the shift

### SAFETY

Predicted hot and dry for the next few days.....Stay hydrated and be safe!

Controlled Unclassified Information//Basic

<b>INCIDENT RADIO COMMUNICATIONS PLAN</b>		1. Incident Name <b>Orleans Complex-Ukonom</b>	2. Date/ Time Prepared 7/30/2017 1800	3. Operational Period Date/Time 7/31/2017 0600 - 2000
---	--	---	--	--

4. Basic Radio Channel Utilization

Radio Type/Cache	Channel	Function	Frequency/Tone	Mode	Assignment	Remarks
King NIFC	1	TAC 1	RX168.0500 TX 168.0500 TONE 136.5	Narrow	DIV A	UKONOM FIRE
King NIFC	2	TAC 2	RX 168.2000 TX 168.2000 TONE 136.5	Narrow	DIV F	UKONOM FIRE
King NIFC	3	TAC 3	RX 168.6000 TX 168.6000 TONE 136.5	Narrow	DIV M	UKONOM FIRE
King NIFC	4	TAC 5	RX 166.7250 TX 166.7250 TONE 136.5	Narrow	DIV Z	UKONOM FIRE
King NIFC	5	TAC 6	RX 166.7750 TX 166.7750 TONE 136.5	Narrow	WEST ZONE	
King NIFC	6	TAC 7	RX 168.2500 TX 168.2500 TONE 136.5	Narrow	RESERVED	RESERVED
King NIFC	7	CMD 7	RX 166.6125 TX 168.4000 TONE 136.5	Narrow	UKONOM FIRE	ALL DIVISIONS
King NIFC	8	CMD 8	FUTURE FUTURE	Narrow	FUTURE	FUTURE
King NIFC	9	CMD 9	FUTURE FUTURE	Narrow	FUTURE	FUTURE
King NIFC	10	SRF UKNO	RX 172.3750 TX 164.1750 NO TONE TONE 167.9	Narrow	FOREST REPEATER	SIX RIVERS UKONOM
King NIFC	11	SRF ORLE	RX 170.4750 TX 165.7500 NO TONE TONE 146.2	Narrow	FOREST REPEATER	SIX RIVERS ORLEANS
King NIFC	12	KNF UKNO	RX 171.5250 TX 165.4125 TONE 167.9 TONE 136.5	Narrow	FOREST REPEATER	KLAMATH UKONOM
King NIFC	13	A/G CMD	RX 169.2000 TX 169.2000 NO TONE NO TONE	Narrow	A/G PRIMARY	
King NIFC	14	A/G TAC	RX 167.0625 TX 167.0625 NO TONE NO TONE	Narrow	A/G SECONDARY	
King NIFC	15	CALCORD	RX 156.0750 TX 156.0750 TONE 162.2 TONE 162.2	Narrow	CALCORD	
King NIFC	16	AIR GUARD	RX 168.6250 TX 168.6250 NO TONE Tone 110.9	Narrow	ALL DIVISIONS	AIR EMERGENCY ONLY

5. Prepared by (Communications Unit) John Chapman COML NOTE: Make Sure Squelch Knob is turned all the way to the left so it clicks. This is to activate the RX Tone Guard.

ICS 205 *John Chapman*

Controlled Unclassified Information//Basic

NFES 1330

# AIR OPERATIONS SUMMARY

Prepared By: Bruce Wicks

Prepared Date: 30 July 2017

Prepared Time: 2024

<b>1. INCIDENT NAME:</b> Orleans Complex	<b>2. OPS PERIOD DATE:</b> 31 July-2017	<b>START TIME:</b> 0800	<b>END TIME:</b> 2100	<b>SUNRISE:</b> 0606	<b>SUNSET:</b> 2029	
<b>3. REMARKS (Safety Notes, Hazards, Air Operations Special Equipment, etc.):</b> MONITOR AIR TO GROUND FREQ WHEN AIRCRAFT ARE IN YOUR DIVISION. SITUATIONAL AWARENESS IS HIGH PRIORITY ALONG WITH BUCKET WORK! FLY WITH LIGHTS AND TRANDSPONDER ON (1255) Watch out for high tension wires		<b>4. READY ALERT AIRCRAFT</b> MEDEVAC - See Medical Plan				<b>5. TFR #:</b> 718888 <b>Altitude-</b> 11,500 msl

6. PERSONNEL	NAME	PHONE #	7. FREQUENCIES	AM	FM	8. FIXED-WING- Type/ Make-Model/ N#/ Base
AOBD	Bruce Wicks	530-906-2224	AIR/ AIR F/W Air To Air R/W Orleans Air to Air R/W Clear	126.1250 118.0750 134.5750		AIRTANKERS- TBA
ATGS(t)	Mike Yearwood	530-575-8169	AIR Tactics F/W		168.5000	LEAD PLANES- TBA
ASGS	Steve Beall	530-598-6755	AIR/GD Command		169.2000	ATGS AIRCRAFT-
ATGS/Helco	Brian Rodgers	530-521-1843	AIR/GD Tactical			AA-06 - ATGS - Rodgers/ Brewster A-57
ATGS	Fred Brewster	530-260-8841	Orleans Complex Clear Creek		167.0625 170.000	8CE - ATGS - Bagwell/Thornton KNF
ATGS	Tom Bagwell	530-598-0821				KNF Forest Aviation Officer
ATGS	Paul Thornton	530-524-9527				1-530-598-1590
Helco	Bill Lambert S.V.	530-598-4128	CMD Primary (CMD 7)		166.6125 rx 168.400 tx Tone 136.5	
HEB1	Tyler Detrick S.V.	530-925-9668	DECK		163.100	
HEB2	Jim Gould H.C.	530-493-1755				
Air Ops Trailer ICP		1-619-359-3344	Air Guard		168.6250 (110.9)tx/rx	OTHER FW AIRCRAFT-


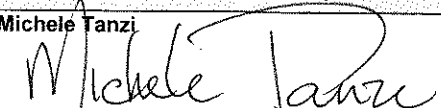
9. HELICOPTERS (Use Additional Sheets as Necessary)

FAA N#	TY	MAKE/ MODEL	BASE	AVAIL	START	REMARKS	FAA N#	T Y	MAKE/ MODEL	BASE	AVAIL	START	REMARKS
6CK	1	S-61 B	Scott Vly	0830	0800	CWN A-48	H-502	2	B-205 ++	Scott Vly	0830	0800	EXC KNF
917	1	S-61 T	Scott Vly	0830	0800	CWN A-13	8MB	3	A-Star	Scott Vly	0830	0800	EXC A-23
6HT	1	S-64 T	Scott Vly	0830	0800	EXC A-47	6TA	3	Bell 407	Scott Vly	0830	0800	Exc A -53
25M	1	S-64 T	Scott Vly	0830	0800	EXC A-38	H-503	3	Bell 407	Happy Camp	0830	0800	EXC KNF
XFT	1	Kmax B	Scott Vly	0830	0800	EXC A-14	H-407	2	Bell UH-1H	Scott Vly	0830	0800	EXC A-54 Hoist
4TH	1	Kmax B	Happy Camp	0830	0800	EXC KNF							
H-506	2	B-205 ++	Scott Vly	0830	0800	EXC A-6							





# MEDICAL PLAN (ICS 206 WF)

1. Incident/Project Name		2. Operational Period				
<b>Orleans Complex</b>		Date/Time <b>7/31/17 0600-2000</b>				
3. Ambulance Services						
Name	Location	Phone & EMS Frequency	Advanced Life Support (ALS) Yes      No			
Mountain Medics – Incident Ambulance	Ti-Bar Fire Station - Day, ICP - Night	Contact on Command	X			
Hoopa Ambulance	1200 Airport Rd. Hoopa, CA	911 or 530-625-4180	X			
Happy Camp Ambulance	Happy Camp, CA	911 or 530-842-7066	X			
4. Air Ambulance Services (COORDINATE with AIR AMBULANCES on CALCORD tone 6)						
Name	Phone	Type of Aircraft & Capability				
Kern H-407      20 min eta	657-464-7830 (Direct)	Hoist Rescue – Scott Valley, CA Day/Night				
Reach / PHI      50 min eta	911 or 707-726-1266 (FICC)	Air Ambulance – Redding, CA Day/Night				
Calfire H-102      15 min eta	911 or 707-726-1266 (FICC)	Hoist Rescue– Kneeland, CA				
Coast Guard      Up to 1:15 hr eta	911 or 707-726-1266 (FICC)	Hoist Rescue – Eureka, CA Day/Night				
5. Hospitals						
Name & Level	GPS Datum – WGS 84 Degrees Decimal Minutes	Travel Time Air      Gnd		Phone	Helipad Yes      No	Address
St. Joseph Hospital	Lat: N40°47.02	30 min	2 hrs	707-445-8121 or 707-442-8646	X	2700 Dolbeer, Eureka, CA
	Long: W124°08.48					
	VHF:					
Mad River Hospital	Lat: N40°53.45	25 min	2 hrs	707-822-3621	X	3800 Janes Rd. Arcata, CA
	Long: W124°05.25					
	VHF:					
Shasta Regional Medical Center	Lat: N40°35.08	55 min	3 hrs	530-244-5353	X	1100 Butte, Redding, CA
	Long: W122°23.25					
	VHF:					
UC Davis Level I Trauma/Burn Center	Lat: N38°33.17	1.5 hrs	6 hrs	916-734-3636 916-734-3790	X	2315 Stockton Blvd. Sacramento, CA
	Long: W121°27.05					
	VHF:					
6. Division / Crew Pre-plan. Update and discuss with assigned resources daily						
Crew EMTs & Equipment						
Fireline EMTs & Location						
Adv. Life Support?						
Air Hoist site:						
Lat: / Long:						
Helispot:						
Lat: / Long:						
Alternate no-fly plan:						
7. Remote Aid Stations						
<b>Medical Unit– ICP Orleans</b> N41°18.518 W123°31.511		Point of Contact:		MEDL – Clayton Thomas 619-363-8225(Camp) or 530-906-6964(Cell)		
		EMS Responders & Capability:		Mountain Medical – Advanced Life Support		
		Equipment Available on Site:		Medical supplies		
		Ambulance ETA :		Air – 55 min.      Ground – 35 min.		
8. Prepared By (Medical Unit Leader)		9. Date/Time		10. Reviewed By (Safety Officer)		11. Date/Time
Clayton Thomas – 619-363-8225(Camp) or 530-906-6964(Cell) 		7/30/17 1930		Michele Tanzi 		7/30/17 1930

# MEDICAL PLAN (ICS 206 WF)

## Medical Incident Report

**Use items one through nine to communicate situation to communications/dispatch.**

**1. CONTACT COMMUNICATIONS DECLARE: "MEDICAL EMERGENCY" OR "NON-EMERGENCY MEDICAL TRANSPORT"**

*Ex: "Communications, Div. Alpha. Stand-by for a medical emergency on Div. Alpha" (If life threatening request designated frequency be cleared for emergency traffic.)*

**2. INCIDENT STATUS:** *Provide incident summary and command structure.*

- **Nature of Injury/Illness** *Describe the injury (Ex: Broken leg with bleeding)* \_\_\_\_\_
- **Incident Name** *Geographic Name + "Medical" (Ex: Trout Meadow Medical)* \_\_\_\_\_
- **Incident Commander (Division Sup. or designee)** *Name of IC* \_\_\_\_\_
- **Patient Care** *Name of Care Provider (Ex: EMT Smith)* \_\_\_\_\_

**3. INITIAL PATIENT ASSESSMENT:** *Complete this section for each pt. This is only a brief, initial assessment. Provide additional pt. info after completing this report.*

- **Number of Patients:** \_\_\_\_\_ - **Male / Female:** \_\_\_\_\_ - **Age:** \_\_\_\_\_ - **Weight:** \_\_\_\_\_
- **Conscious?**  YES  NO = MEDEVAC! - **Breathing?**  YES  NO = MEDEVAC!
- **Mechanism of Injury** *What caused the injury?* \_\_\_\_\_
- **Location, Lat/Long** (Datum WGS84) *Ex: N 40° 42.45' x W 123° 03.24'* \_\_\_\_\_

**4. SEVERITY OF EMERGENCY, TRANSPORT PRIORITY**

SEVERITY	TRANSPORT PRIORITY
<input type="checkbox"/> <b>URGENT-RED</b> <i>Life threatening injury or illness.</i> <i>Ex: Unconscious, difficulty breathing, bleeding severely, 2° – 3° burns more than 4 palm sizes, heat stroke, disoriented.</i>	Ambulance or MEDEVAC helicopter. Evacuation need is <b>IMMEDIATE.</b>
<input type="checkbox"/> <b>PRIORITY-YELLOW</b> <i>Serious Injury or illness.</i> <i>Ex: Significant trauma, not able to walk, 2° – 3° burns not more than 1-2 palm sizes.</i>	Ambulance or consider air transport if at remote location. Evacuation may be <b>DELAYED.</b>
<input type="checkbox"/> <b>ROUTINE-GREEN</b> <i>Not a life threatening injury or illness. Ex: Sprains, strains, minor heat-related illness.</i>	Non-Emergency. Evacuation considered <b>Route of Convenience.</b>

**5. TRANSPORT PLAN:**

- Air Transport:** (Agency Aircraft Preferred)
- Helispot                       Short-haul/Hoist                       Life Flight                       Other
- Ground Transport:**
- Self-Extract                       Carry-Out                       Ambulance                       Other

**6. ADDITIONAL RESOURCE/EQUIPMENT NEEDS:**

- Paramedic/EMT(s)     SKED/Backboard/C-Collar     Crew(s)                       Burn Supplies                       Oxygen
- Trauma Bag                       Medication(s)                       IV/Fluid(s)                       Cardiac Monitor/AED
- Other (i.e. splints, rope rescue, wheeled litter)

**7. COMMUNICATIONS:**

- Run Medical Emergency on Command
- Coordinate with air ambulance on CALCORD tone 6

**8. EVACUATION LOCATION:**

- **Lat/Long** (Datum WGS84) *EX: N 40 42.45' x W 123 03.24'* \_\_\_\_\_
- **Patient's ETA to Evacuation Location:** \_\_\_\_\_
- **Helispot/Extraction Size and Hazards:** \_\_\_\_\_

**9. CONTINGENCY:** *If primary options fail, what actions can be implemented in conjunction with primary evacuation method? Be thinking ahead...*

\_\_\_\_\_

\_\_\_\_\_

**REMEMBER:** -Confirm ETA's of resources ordered                      -Act according to your level of training

- If air or ground ambulance is DELAYED: Package and transport patient to rendezvous with incoming Ambulance. Re-route EMS helicopter to rendezvous point as appropriate.

## Orleans Complex - Ukonom Fire - Incident Risk Analysis (215a)

Div.	LCES Analysis of Tactical Applications (Hazardous Actions or Conditions)	LCES Mitigations/Warnings/Remedies
All Personnel Includes ICP	Heat Related Illness/Injuries	<p>STAY HYDRATED before, during and after shift.</p> <p>Please review Strategies that mitigate Heat Injuries in 6 MFS "Energy Drinks" such as Monster, Red Bull or Rockstar contribute to heat injuries and should not be consumed.</p> <p>Pre-Plan the needs of your crews. Stage more water and Electrolyte drinks along your work area.</p>
All	Extreme Driving Concerns	<p>Narrow, steep, unforgiving native surfaced roads within the fire area. You NEED to slow down and Expect the Unexpected! Severe road damage on 96 north of Somes Bar (Buckling &amp; undulations) to Ti-Bar Rd. You MUST drive with caution. Be aware of fire activity on the 13N02 road. Maintain good sight/reaction distance.</p> <p><b>Headlights ON! Seatbelts ON!</b></p>
All	Fire Behavior	<p>Increase in Fire Behavior between 1700 and 2300 hours. Preplan! Identify Trigger Points! How long will it take you to get back to your vehicles and exit the area safely? Know your escape routes as the situations change.</p>
All	Steep Terrain	<p>Ensure secure footing. Keep appropriate work spacing. Focus! Concentrate on foot placement to limit slips, trips and falls.</p>
Div A, M, Z	Working with Heavy Equipment	<p>Stay at least 100' in front and 50' behind the equipment. In Timber, distances should be increased to 2½ times the tallest tree height. Avoid working below equipment. Make eye contact with operator: blade down, idle down, before approaching.</p>
All	Difficult terrain and conditions for providing for emergency medical needs.	<p>Review Med Plan before the need arises. Limit high risk activities. Have a backup plan AND don't depend solely on air resources. Practice the "What if" scenarios.</p>
All	Danger Trees within Fire Area & Routes to work areas	<p>2008 fire scar, Fire weakened trees, shallow root systems, widow makers. Be aware of bind when cutting jackstrawed timber. Watch out when traveling/working during windy conditions. Limit exposure. Mitigate if safe. Use qualified fallers.</p>
All	Poison Oak Exposure	<p>Know what it looks like. "Leaves of three, let it be" Change or launder Nomex frequently. Ensure proper Personal Hygiene</p>
All	Personal Protective Equipment	<p>ALL Personnel are reminded to wear PPE when in route to and from the fire and within the fires perimeter. Insure PPE is compatible with hazards and risks.</p>
All	Hygiene	<p>Wash Hands prior to eating and after using the toilet facilities. Clean out ice chests with soap, bleach &amp; water.</p>
All	Wildlife	<p>Watch for elk, deer and bears crossing roadways. Numerous sightings. Especially active around Dusk &amp; Dawn</p>

Date & Time Prepared: July 30, 2017 @ 2100

Operational Period: July 31, 2017 from 0600 - 2000

Prepared By: Michele Tanzi - SOF1, Jeff Barnhart - SOF2

**CA-SRF-000741 (0510), P5K73417**  
**Six Rivers National Forest**  
 Northern California Incident Management Team 1



### Strategies that Strengthen a Fatigued Firefighter and Mitigate Heat Injury

#### Know Your Risk Factors

- **High sugar content beverages, Energy Drinks**, excessive caffeine intake, some weight loss products, **creatine**, ephedrine, alcohol, amphetamines, cocaine, ecstasy
- History of a previous heat injury
- **Motivation to push oneself past your stopping point (warrior mentality)**
- **Reluctance to report issues or illness**
- Decongestants, antihistamines, cholesterol lowering drugs (statins), diuretics, beta blockers, certain antibiotics (check with your personal physician)
- Recent virus: respiratory or gastrointestinal
- Recent medical procedure associated with dehydration or electrolyte disturbances
- Lower level of fitness, higher percentage of body fat
- Inadequate heat acclimatization
- Skin conditions (sunburn, skin rash, etc.)
- Dehydration, inadequate nutrition

#### Pre-hydration

- Dehydration before the event weakens you and sets you up for heat injury.
- Pre-hydrate daily by drinking at minimum 6-8 eight-ounce glasses of water in addition to liquids consumed during meals (8 eight-ounce glasses = 2 quarts). This should include off-duty days. The body can't be dehydrated for four days and then regain cell and tissue hydration status within the first day of returning to work. You can drink lots of fluids, but it still takes time for the water to distribute to all the compartments of the body and provide the best benefit.
- Drink throughout the day, not at one time.
- Know your own sweat rate!
  - Weigh yourself both before and after a challenging workout.  
(2 lbs. of weight loss = approximately 1 liter of fluid loss)

#### Hydration

- Firefighters engaged in arduous tasks can lose as much as 1-2 liters of fluid per hour.
- Replace sweat loss during an event by drinking, at minimum, 1 liter of fluid for every 1 hour of exertion. (4 eight-ounce water bottles = approximately 1 liter).
- A general rule after one hour of work is adding in sports drinks (Gatorade) to replace carbohydrates, sodium and electrolytes. (1 twelve-ounce can of Gatorade followed by 3 eight-ounce water bottles = approximately 1 liter).
- Never mix bottled/canned Gatorade with water; it upsets the formula that is designed for easy digestion.
- Carry powdered Gatorade to add to water since bottled Gatorade may not be available.
- **“Energy” drinks such as Monster, Redbull or Rockstar can cause tachycardia and dehydration. They contribute to heat injuries and should not be consumed at fire incidents or in the emergency response environment.**
- Urine should be clear or very minimally yellow. Darker urine is the body's way of telling you it needs more fluids.

Date & Time Order was placed:		Order #	Location & Time for Delivery (DIV,LZ,DP,Lat Long)		Mode of delivery
		(DIVS+#)			(Driven/Helo/DIVS to Pick up)
			Lat:		
			Long:		
Order received in Communications by (Name):					Time:
Order shipped to line by (Name): (Send this sheet to the line with the order)					Time:
#	Item				
1	<b>1,000 Foot Hose Lay includes the following: Amount _____</b>				
	10, 100'x1½" Rolls Hose; 10, 100'x1" Rolls Hose; 10, 1½" Gated Wyes; 10, 1½" to 1" reducers; 10, 1" nozzles				
2	<b>2,000 Foot Hose Lay includes the following: Amount _____</b>				
	20, 100'x1½" Rolls Hose; 20, 100'x1" Rolls Hose; 20, 1½" Gated Wyes; 20, 1½" to 1" reducers; 20, 1" nozzles				
3	<b>3,000 Foot Hose Lay includes the following: Amount _____</b>				
	30, 100'x1½" Rolls Hose; 30, 100'x1" Rolls Hose; 30, 1½" Gated Wyes; 30, 1½" to 1" reducers; 30, 1" nozzles				
#	Item	Amount	#	Item	Amount
4	Hose (50') garden, 3/4"		30	Gas Unleaded (Gallons)	
5	Hose (100'), 1"		31	Oil 2 cycle, (Pints)	
6	Hose (100'), 1½"		32	Bar Oil (Qts)	
7	Nozzle, Garden, 3/4"		33	Drip Torch ea	
8	Nozzle, Forester, 1"		34	Drip torch mix 3.5:1.5 (gallon)	
9	Nozzle, KK Type, 1"		35	Fusees (Boxes or cases)???	
10	Nozzle, KK Type, 1½"		36	Flare Gun Rounds (12/BX)	
11	Wye, Gated, 3/4"		37	Cartridge #6 purple (box)	
12	Wye, Gated, 1"		38	Batteries "AA" PKGs(24/PKG)/BX	
13	Wye, Gated, 1½"		39	Ribbon, Flagging (Specify Color)*	
14	Inline-Tee, 1x1x3/4"		40	Water, Cubies	
15	Inline-Tee, 1x1x1"		41	Water, Bottled, Cases	
16	Inline-Tee (1½" X 1")		42	Gatorade	
17	Reducer, 1" X 3/4"		43	MRE's (12/BX)	
18	Reducer, 1½" X 1"		44	Heavy Mill Plastic	
19	Increaser, 3/4" X 1"		45	Washcloth, waterless, cleansing	
20	Increaser, 1" X 1½"		46	Wrap, Structure 54"x300'	
21	Foam 5 gal		47	Sprinkler Kit	
22	Foam 4 oz (For Backpack Pump)		48	Mark 3 Pump	
23	Backpack Pump		49	Mark 3 Pump Kit- w/10 gal mixed fuel	
24	Pumpkin (Gallons?)		50	Chainsaw Kit	
25	Porta-Tank (Gallons?)		51	Mop-Up Kit, 3-Wand	
26	Shovel		52	Pump Kit, Lightweight, 2 Cycle	
27	Pulaski		53	Gas, Raw and 2 qts 2-cycle oil, ea	
28	Combi Tool		54	Lightweight Pump Kit-Cache w/5gal fuel	
29	McCloud		55	Gas, raw (gal) and 1 qt 2-cycle oil, ea.	
Notes:			Notes:		



