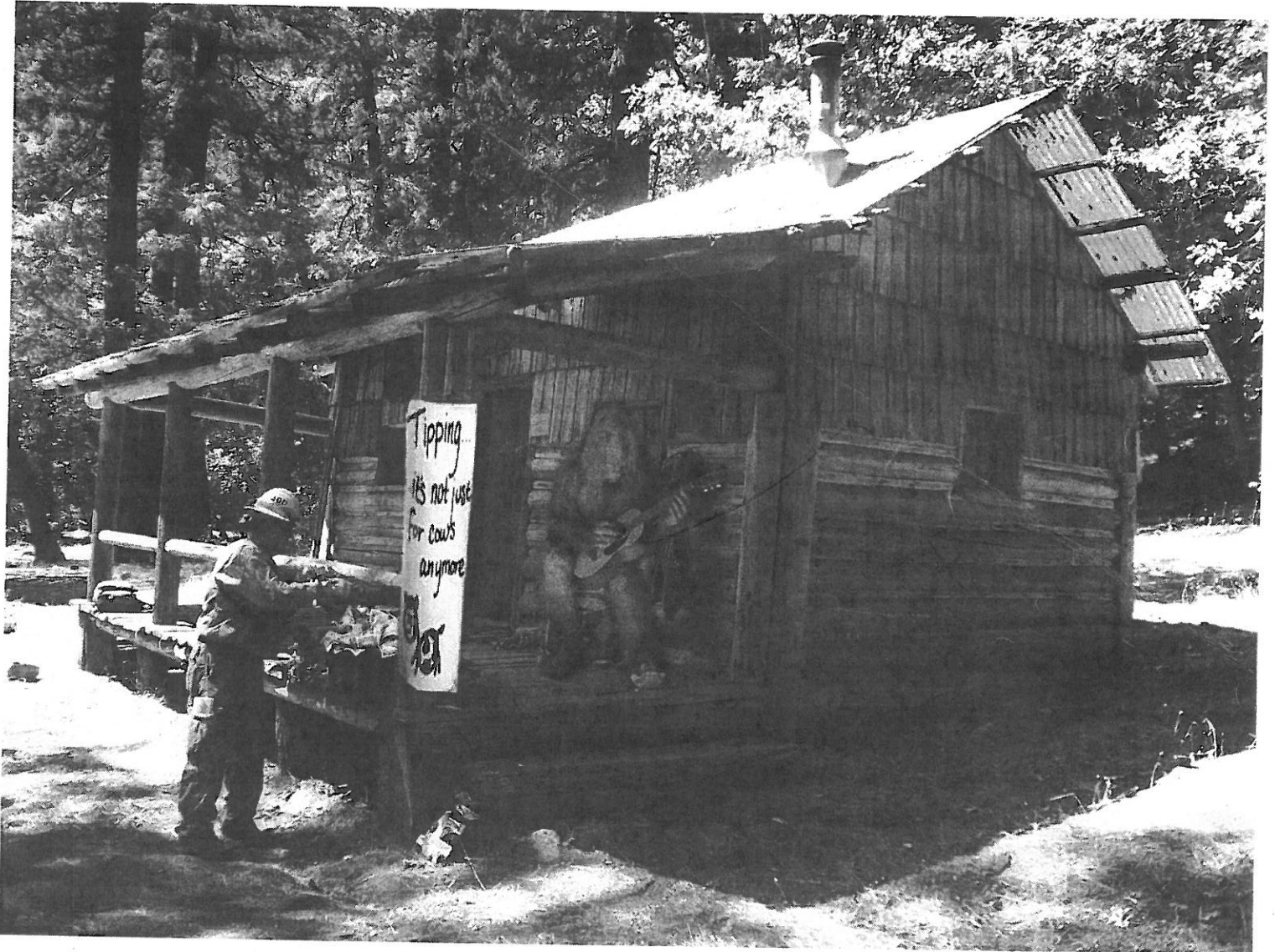


* CORRECTED *

ORLEANS COMPLEX

INCIDENT ACTION PLAN



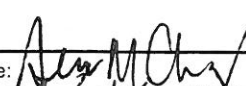
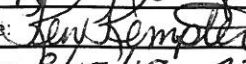
FRIDAY, AUGUST 18th ~ SATURDAY, AUGUST 19th

DAY SHIFT 0600-1800


NIGHT SHIFT 1800- 0600

CA-SRF-000741 (0510) P5K73417

INCIDENT OBJECTIVES (ICS 202)

1. Incident Name:	2. Operational Period: DAY/ NIGHT		
ORLEANS COMPLEX	Date/Time From: 08/18/2017 0600	FRI	Date/Time To: 08/19/2017 0600
SAT			
3. Objective(s):			
<u>CONTROL OBJECTIVES:</u>			
1. KEEP THE UKONOM FIRE:			
* NORTH OF DIVISION A DOZER LINE TO PROTECT PRIVATE PROPERTY AND CULTURAL RESOURCES.			
* EAST OF THE KLAMATH RIVER TO PROTECT PRIVATE PROPERTY, INFRASTRUCTURE (HWY 96), AND CULTURAL RESOURCES.			
* SOUTH OF UKONOM CREEK TO MINIMIZE IMPACTS TO AQUATIC SPECIES, SPOTTED OWL HABITAT AND BALD EAGLE HABITAT.			
* EAST OF DIVISION Z TO PROTECT PRIVATE PROPERTY AND CULTURAL RESOURCES.			
2. KEEP THE OTHER FIRES IN THE COMPLEX WITHIN REMOTE NATIONAL FOREST AREAS TO PROTECT HERITAGE, CULTURAL AND NATURAL RESOURCES.			
3. CONFINE, CONTAIN OR CONTROL NEW FIRES COMMENSURATE WITH VALUES AT RISK.			
<u>MANAGEMENT OBJECTIVES:</u>			
1. PRIOR TO ENGAGEMENT, STOP AND DISCUSS STRATEGIES AND TACTICS TO ENSURE SOUND RISK MANAGEMENT PRINCIPALS ARE IN PLACE TO PROVIDE FOR FIREFIGHTER AND PUBLIC SAFETY.			
2. ALL FIRE OPERATIONS WILL BE CONDUCTED IN CLOSE COORDINATION WITH DESIGNATED TRIBAL REPRESENTATIVES AND READS.			
3. ESTABLISH AND STRENGTHEN COOPERATORS. PARTNER, AND STAKEHOLDER RELATIONSHIPS.			
4. MINIMIZE IMPACTS TO CULTURAL RESOURCES, INFRASTRUCTURE, AND PRIVATE PROPERTY IN HOLDINGS.			
4. Operational Period Command Emphasis:			
IDENTIFICATION OF ALL NEW AND EXISTING FIRES ON THE ORLEANS COMPLEX. PRIORITIZE AND DISCUSS THE METHOD OF ATTACK OF ALL FIRES.			
General Situational Awareness:			
THE NATIONAL PREPAREDNESS LEVEL IS CURRENTLY AT LEVEL 5. COMPETITION FOR RESOURCES IS EXTREMELY HIGH. BASE ALL TACTICS AND STRATEGIES ON THE RESOURCES YOU HAVE, NOT ON THE RESOURCES YOU WANT.			
5. Site Safety Plan Required? Yes <input type="checkbox"/> No <input checked="" type="checkbox"/>			
Approved Site Safety Plan(s) Located at:			
6. Incident Action Plan (the items checked below are included in this Incident Action Plan):			
<input checked="" type="checkbox"/> ICS 202	<input type="checkbox"/> ICS 207	Other Attachments:	
<input checked="" type="checkbox"/> ICS 203	<input type="checkbox"/> ICS 208	<input checked="" type="checkbox"/> SAFETY MESSAGE	
<input checked="" type="checkbox"/> ICS 204	<input checked="" type="checkbox"/> ICS 220	<input checked="" type="checkbox"/> CODE OF CONDUCT	
<input checked="" type="checkbox"/> ICS 205	<input checked="" type="checkbox"/> Map/Chart	<input checked="" type="checkbox"/> ICS 214	
<input type="checkbox"/> ICS 205A	<input checked="" type="checkbox"/> Weather Forecast/Tides/Currents	<input type="checkbox"/> _____	
<input checked="" type="checkbox"/> ICS 206		<input type="checkbox"/> _____	
7. Prepared by: DENA CHAVEZ		Position/Title: PSC	Signature: 
8. Approved by Incident Commander:		Name: <i>KEN KEMPTER</i>	Signature: 
ICS 202	IAP Page	Date/Time: <i>8/17/17 23:45</i>	

ORGANIZATION ASSIGNMENT LIST (ICS 203)

1. Incident Name:		2. Operational Period: DAY/ NIGHT	
ORLEANS COMPLEX		Date/Time From: 08/18/2017 0600	Date/Time To: 08/19/2017 0600 SAT
3. Incident Commander(s) and Command Staff:		6. Logistics Section:	
IC	MICHAEL WAKOSKI	CHIEF	JACK VAN LEAR
DEPUTY	KEN KEMPTER	DEPUTY	DANIEL FROELICH
SAFETY OFFICER	ELLIOTT; SOUTHERLAND	SUPPLY UNIT	DAVID REYNOLDS
PIO	PEEBLES; NICHOLS	FACILITIES UNIT	NEIL GRAF
LIAISON OFFICER	JACK WISE (T)	GROUND SUPPORT UNIT	CHERYL BALES
4. Agency/Organization Representative(s):		COMMUNICATIONS UNIT	MICHAEL HORST
Agency/Organization	Name	MEDICAL UNIT	SWEEN; HERMAN ? <i>McGARY</i>
AGENCY ADMINISTRATOR	NOLAN COLEGROVE	FOOD UNIT	SCOTT ASHBACH
KARUK TRIBAL REP	EARL CROSBY	ORDERING MANAGER	BELMONTEZ (T); WASHBURN (T)
KARUK COORDINATOR	MARSHALL SUPER	EQUIPMENT MANAGER	JEFF MITCHELL (T)
BIA REP	GREG PERRY	SECURITY UNIT	BRIAN WILLBOND
HOOPA TRIBAL REP	ROD MENDES	7. Operations Section:	
YUROK TRIBAL REP	RICHARD MYERS; WALT LARA	DAY OPS SECTION CHIEF	TOPOLESKI; MARINELLI (T)
CCC REP	NOAH WALL-TORRES	PLANNING OPS	GIPSON; HAYES
LEAD READ	JENNIFER DYER		
WEST READ	ANDREW SPAIN		
5. Planning Section:		DIVISION/GROUP	A/F/M JAMES SALAZAR
CHIEF	DENA CHAVEZ	DIVISION/GROUP	U JEFF WENGER
SITUATION UNIT	FRY; LEVERENZ (T)	DIVISION/GROUP	W MATTHEW AHEARN
RESOURCES UNIT	HOFFMAN; REZENDE	DIVISION/GROUP	Z GREGOR; LARA (T)
STATUS CHECK-IN	ALAN DUGGAN (T)	DIVISION/GROUP	CREEK GROUP JAMIE MILLER
DEMOBILIZATION UNIT	JOHN MARTEL	DIVISION/GROUP	WEST GROUP NUTTALL; BLAKE (T)
HUMAN RESOURCE SPECIALIST	HARTMAN; <i>GOLDMAN (T) OVERTON</i>	DIVISION/GROUP	STRUCTURE GROUP LAWRENCE; MCHARGUE (T)
TRAINING SPECIALIST	SCOTT TENERY	DIVISION/GROUP	NIGHT DOWNARD; GOMEZ
GIS SPECIALIST	CONKLIN; BREYER (T); CAMPBELL (T)	7b. Air Operations Branch:	
TECHNOLOGY SUPPORT SPECIALIST	DAVID VUONG	AIR OPS BRANCH DIRECTOR	TED VISSER
FIRE BEHAVIOR ANALYST	HARRIS; ELMQUIST (T)	AIR ATTACK SUPERVISOR	FRED BREWSTER
INCIDENT METEOROLOGIST	TERRY LEBO	AIR SUPPORT SUPERVISOR	STEVE BEALL
AIR QUALITY SPECIALIST	ROBERT ELLEMAN	HELICOPTER COORDINATOR	BILL LAMPERT
		ASGS	RANDY CARTER
		8. Finance/Administration Section:	
		CHIEF	RICHARD TOBIN
		TIME UNIT	STEPHEN GREENE
		COMPENSATION UNIT	JANNA MASI
		COST UNIT	SCOTT ZEHNDER (T)
9. Prepared By:	Name: REZENDE	Position/Title: RESOURCE UNIT LEADER	Signature: 
ICS 203	IAP Page	Date/Time: 08/17/2017 0755	



INCIDENT Weather Forecast



FORECAST NO: 31
PREDICTION FOR: 0600 Friday – 0600 Saturday
SHIFT DATE: 8/18/17
FORECAST ISSUED: 2000 PDT, Aug 17, 2017

NAME OF FIRE: Orleans Complex
UNIT: SRF
Incident Meteorologist: Terry Lebo

WEATHER DISCUSSION

Ridging aloft will weaken today in response to weak mid-level disturbance moving east across northern Oregon. This afternoon smoke will dissipate more than the last few days due to the weakening ridge. Temperatures will remain above normal with afternoon humidity approaching single digits.

WEATHER FORECAST for FRIDAY:

WEATHER: Sunny with areas of smoke, especially in sheltered valleys.

MAX TEMPERATURES: 85-99° - East Zone 82-88° - West Zone

MIN HUMIDITY: 10-20% - East Zone 15-25% - West Zone

20 FOOT WINDS:

SLOPE/VALLEY - Calm to light down valley becoming up valley 5-8 mph in the afternoon with occasional gusts 10-15 mph.

RIDGETOP - Northeast 5-10 mph with gusts around 15 mph in the morning becoming north to northwest 5-8 mph after noon.

WEATHER FORECAST for FRIDAY NIGHT:

WEATHER: Clear with pockets of smoke in the valleys after midnight. Minimal marine layer expected.

MIN TEMPERATURES: 59-66°

MAX HUMIDITY: 15-25% mid slopes and ridges. 45-55% valleys.

20-FOOT WINDS:

SLOPE/VALLEY - Up valley 5-7 mph, becoming down valley 2-5 mph in the late evening.


RIDGETOP - Northwest 5-8 mph becoming northeast in the evening with gusts to 15 mph before midnight.

EXTENDED OUTLOOK:

Temperatures will cool slightly over the weekend as the mid-level ridge retreats west. Low pressure aloft will develop off the southern California coast. The low will slowly spread moisture into the region. Clouds will begin increasing early next week with potential for thunderstorms Tuesday afternoon and evening.

Portable RAWs: 163.350 Tone 0003 for Ukonom Lookout, Tone 0004 for Carter Creek

FIRE BEHAVIOR FORECAST

FORECAST NUMBER 30	TYPE OF FIRE: Wildland Fire
FIRE NAME: Orleans Complex	OPERATIONAL PERIOD: Aug. 18, 2017
DATE ISSUED: August 17, 2017	TIME ISSUED: 2000
UNIT: Six Rivers NF	SIGNED: Nic Elmquist - FBAN (t) 

RAWS Data From Aug. 16th: Temperature (max/min)-- RH (max/min)--Wind (max gust)—ERC—BI—1000-hr FM						
Dutch Indie (2296') :	95 ⁰ / 63 ⁰	13% / 51%	25 mph	70	88	9%
Ukonom Portable (4510') :	86 ⁰ / 64 ⁰	18% / 43%	23 mph			
SRF51 Portable (4336') :	88 ⁰ / 40 ⁰	24% / 40%	8 mph			

Increased Fire Behavior is Likely:
 Haines Index 5 or 6 representing unstable atmosphere; Clear air enabling solar heating; Fire becoming established in bottom 1/3rd of the slope with fuels ahead of it; 1600-2000 most active part of the burn period.

WEATHER SUMMARY: *****Please See attached Fire Weather Forecast*****

Today: Ridging aloft will weaken and smoke will dissipate more than the last few days. Temperatures will remain above normal with afternoon humidity approaching single digits.

Max Temp: East Zone 85-99° West Zone 82-88°
Min RH: East Zone 10-20% West Zone 15-25%

20 FT Winds:
Slope/Valley- Calm to light down valley becoming up valley 5-8 mph in the afternoon with gusts 10-15 mph.
Ridge Top- Northeast 5-10 mph with gusts around 15 mph in the morning becoming north to northwest 5-8 mph.
Haines Index (IRPG: pg. 65)- Index of 6 indicates High Potential

Day Shift:
 Today, the Haines Index will be a 6 indicating a dry and unstable lower atmosphere supporting rapid fire growth. The main limiting factor the last 2 burn periods has been limited solar heating caused by the smoke inversion and the position of the fire relative to the slope. With the unstable lower atmosphere there is potential for the "lid" to come off the fire and for the fire to make larger runs than it has in recent days.

Night Shift:
 Expect areas of the fire exposed to breezy evening winds to burn with more intensity until the inversion arrives early in the morning. When this occurs, fire activity should moderate significantly and smolder for the remainder of the shift.

Ukonom Fire: Each day the Ukonom fire shows less signs of heat. No perimeter growth is expected, but stump holes, downed logs, and isolated interior pockets of fuel may continue to burn under these warm and dry conditions.

Zulu Fires: The fires will continue to hold heat while the 1000-hour fuels smolder well within the perimeter.

Haypress Fire: The best available intelligence estimates the Haypress fire to be 1,488 acres. This gives the fire approximately 1000 acres of growth over the last 2 burn periods. It is important to try and get eyes into where the fire currently sits in Haypress, Bridge, and Wooley Creeks. If these creeks don't hold, the fire will want to burn with more intensity up the opposite slope. The main carrier of fire continues to be dead and down material, with flame lengths of 2'-4' and a ROS of <2 chains/hr while backing. A head fire could produce flame lengths of 8'-12' and ROS of >15 chains/hr.

AIR OPERATIONS

Plan for limited air support for a majority of the day due to smoky conditions.

SAFETY

Post lookouts and identify trigger points which account for extended travel times on the mountainous roads.

Division/Group Assignment List (ICS 204 WF)

1. Incident Name:				3.			
ORLEANS COMPLEX				Branch:		Division/Group: A/F/M	
2. Operational Period: DAY/ NIGHT							
Date/Time From: 08/18/2017 0600 FRI		Date/Time To: 08/19/2017 0600 SAT					
4. Operations Personnel							
OPERATIONS CHIEF		TOPOLESKI; MARINELLI (T)		PLANNING OPERATIONS		GIPSON; HAYES	
DIVISION/GROUP SUPERVISOR		JAMES SALAZAR		AIR ATTACK SUPERVISOR		TED VISSER	
5. Resources Assigned this Period							
Strike Team / Task Force / Resource Designator		LWD	Leader	Number Persons	Drop Off PT./Time	Pick Up PT./Time	
ENG3 CONCHO ENGINE1454 E-131		08/18	DARRELL A CRAIG	3	/0600	/1800	
ENG3 ENGINE 42 E-217		08/28	ANTHONY E STEFANI	5	/0600	/1800	
ENG6 VAIL BRUSH 3 E-158		08/20	PAUL CADA	3	/0600	/1800	
ENG6 FIRESTORM E-210		08/18	JAMIE WILLBURN	3	/0600	/1800	
REAF O-88		08/19	LEE MORGAN	1	/0600	/1800	
SOF2 O-121		08/22	STEVEN R DAVIS	1	/0600	/1800	
FEMP O-339		08/26	TOM MORAN	1	/0600	/1800	
FEMP O-341		08/26	JON M MILLER	1	/0600	/1800	
EMTF O-390		08/11	JUSTIN SIMMONS	1	/0600	/1800	
6. Control Operations/Work Assignments:							
Secure, mop up fire edge. Patrol spot fire west of the Klamath River between Three Creeks and 14N39. Monitor fire activity on indirect containment lines preparing to tactically ignite if fire behavior dictates. Ensure Ignition plan has been completed and approved before any tactical ignitions begin.							
7. Special Instructions:							
Consult with READ/Tribal Consultant for any new line construction. Stay within existing dozer line footprint. Draft from approved sites only. Continue to monitor accountable property. IA resources will be assigned by Operations. DIVS coordinate with communications when engaging in traffic control. Use precaution when passing beneath fire on Hwy 96. Heritage Consultant Ray Marquez-Griffin will be POC for ALL Divisions. Heritage Consultant Franklin Donahue will be available for all Divisions. READs and Heritage Consultants check in with DIVs when entering and exiting Divisions							
8. Division/Group Communication Summary							
Function	Channel	RX Frequency N/W	RX Tone/NAC	TX Frequency N/W	TX Tone/NAC	Mode	
COMMAND	7 - CMD 7	166.6125 N	TONE 4 (136.5)	168.4000 N	TONE 4 (136.5)	A	
COMMAND	9 - CMD 9	173.0625 N	TONE 4 (136.5)	166.1250 N	TONE 4 (136.5)	A	
TACTICAL	1 - TAC 1	168.0500 N	TONE 4 (136.5)	168.0500 N	TONE 4 (136.5)	A	
AIR TO GROUND	13 - A/G CMD	169.2000 N	NONE	169.2000 N	NONE	A	
AIR TO GROUND	14 - A/G TAC	167.0625 N	NONE	167.0625 N	NONE	A	
AIR GUARD	16 - AIR GUARD	168.6250 N	NONE	168.6250 N	TONE 1 (110.9)	A	
9. Prepared By (Resource Unit Leader)			Approved By (Planning Section Chief)			Date	Time
REZENDE/ HOFFMAN			DENA CHAVEZ			08/17/2017	0755

Division/Group Assignment List (ICS 204 WF)

1. Incident Name:				3.			
ORLEANS COMPLEX				Branch:		Division/Group: U	
2. Operational Period: DAY/ NIGHT							
Date/Time From: 08/18/2017 0600 FRI		Date/Time To: 08/19/2017 0600 SAT					
4. Operations Personnel							
OPERATIONS CHIEF		TOPOLESKI; MARINELLI (T)		PLANNING OPERATIONS		GIPSON; HAYES	
DIVISION/GROUP SUPERVISOR		JEFF WENGER		AIR ATTACK SUPERVISOR		TED VISSER	
5. Resources Assigned this Period							
Strike Team / Task Force / Resource Designator		LWD	Leader	Number Persons	Drop Off PT./Time	Pick Up PT./Time	
HC2I KARUK 1 C-10		08/23	TAYLOR RAY SUPER	18	/0600	/1800	
HC2 DIAMOND FIRE CREW C-72		08/21	ROBERT PRATTE	20	/0600	/1800	
CHIP FIRESTORM E-21		08/25	MARTIN VINEYARD	2	/0600	/1800	
FAL1 MODULE - FALLER - PACIFIC RIDGELINE FORESTRY LLC - R5M O-400		08/30	BARDOMIANO MACIEL	2	/0600	/1800	
ARCH O-262		08/19	ANNSHEREE L BROWN	1	/0600	/1800	
CULS O-312		08/24	RAY E MARQUEZ-GRIFFIN	1	/0600	/1800	
SOFR O-370			ROBERT FORD	1	/0600	/1800	
SOFR O-355		08/27	NICK COLONELLI (T)	1	/0600	/1800	
AMBU MOUNTAIN MEDICS AMBULANCE E-196			TBD		/0600	/1800	
REMS 3 O-366		08/26	TIM GOFORTH	2	/0600	/1800	
FEMT O-142		08/19	JOSH BENNETT-SNOW	1	/0600	/1800	
FEMP O-343		08/27	JON FORD	1	/0600	/1800	
EMTF O-421		08/30	ROBERT A GARCIA	1	/0600	/1800	
SEE NEXT PAGE FOR WORK ASSIGNMENTS					/0600	/1800	
<i>C-76</i>			<i>Valenti</i>				
<i>C-77</i>							
8. Division/Group Communication Summary							
Function	Channel	RX Frequency N/W	RX Tone/NAC	TX Frequency N/W	TX Tone/NAC	Mode	
COMMAND	7 - CMD 7	166.6125 N	TONE 4 (136.5)	168.4000 N	TONE 4 (136.5)	A	
COMMAND	9 - CMD 9	173.0625 N	TONE 4 (136.5)	166.1250 N	TONE 4 (136.5)	A	
TACTICAL	2 - TAC 2	168.2000 N	TONE 4 (136.5)	168.2000 N	TONE 4 (136.5)	A	
AIR TO GROUND	13 - A/G CMD	169.2000 N	NONE	169.2000 N	NONE	A	
AIR TO GROUND	14 - A/G TAC	167.0625 N	NONE	167.0625 N	NONE	A	
AIR GUARD	16 - AIR GUARD	168.6250 N	NONE	168.6250 N	TONE 1 (110.9)	A	
9. Prepared By (Resource Unit Leader)			Approved By (Planning Section Chief)			Date	Time
REZENDE/ HOFFMAN			DENA CHAVEZ			08/17/2017	0755

Division/Group Assignment List (ICS 204 WF)

1. Incident Name:			3.			
ORLEANS COMPLEX			Branch:		Division/Group: U	
2. Operational Period: DAY/ NIGHT						
Date/Time From: 08/18/2017 0600 FRI		Date/Time To: 08/19/2017 0600 SAT				
4. Operations Personnel						
OPERATIONS CHIEF		TOPOLESKI; MARINELLI (T)		PLANNING OPERATIONS		GIPSON; HAYES
DIVISION/GROUP SUPERVISOR		JEFF WENGER		AIR ATTACK SUPERVISOR		TED VISSER
5. Resources Assigned this Period						
Strike Team / Task Force / Resource Designator		LWD	Leader	Number Persons	Drop Off PT./Time	Pick Up PT./Time
6. Control Operations/Work Assignments:						
Mitigate hazard trees and improve road system, in consideration of fire coming out of wilderness. Monitor fire activity on indirect containment lines preparing to tactically ignite if fire behavior dictates. Ensure Ignition plan has been completed and approved before any tactical ignitions begin.						
7. Special Instructions:						
Consult with READ/Tribal Consultant for any new line construction. Draft from approved sites only. READ Ann Brown will be available in DIVs V and W. Heritage Consultant Ray Marquez-Griffin will be POC for ALL Divisions. Heritage Consultant Franklin Donahue will be available for all Divisions READs and Heritage Consultants check in with DIVs when entering and exiting Divisions						
8. Division/Group Communication Summary						
Function	Channel	RX Frequency N/W	RX Tone/NAC	TX Frequency N/W	TX Tone/NAC	Mode
COMMAND	7 - CMD 7	166.6125 N	TONE 4 (136.5)	168.4000 N	TONE 4 (136.5)	A
COMMAND	9 - CMD 9	173.0625 N	TONE 4 (136.5)	166.1250 N	TONE 4 (136.5)	A
TACTICAL	2 - TAC 2	168.2000 N	TONE 4 (136.5)	168.2000 N	TONE 4 (136.5)	A
AIR TO GROUND	13 - A/G CMD	169.2000 N	NONE	169.2000 N	NONE	A
AIR TO GROUND	14 - A/G TAC	167.0625 N	NONE	167.0625 N	NONE	A
AIR GUARD	16 - AIR GUARD	168.6250 N	NONE	168.6250 N	TONE 1 (110.9)	A
9. Prepared By (Resource Unit Leader)			Approved By (Planning Section Chief)		Date	Time
REZENDE/ HOFFMAN			DENA CHAVEZ		08/17/2017	0755

Division/Group Assignment List (ICS 204 WF)

1. Incident Name:			3.			
ORLEANS COMPLEX			Branch:		Division/Group: W	
2. Operational Period: DAY/ NIGHT						
Date/Time From: 08/18/2017 0600 FRI		Date/Time To: 08/19/2017 0600 SAT				
4. Operations Personnel						
OPERATIONS CHIEF		TOPOLESKI; MARINELLI (T)		PLANNING OPERATIONS		GIPSON; HAYES
DIVISION/GROUP SUPERVISOR		MATTHEW AHEARN		AIR ATTACK SUPERVISOR		TED VISSER
5. Resources Assigned this Period						
Strike Team / Task Force / Resource Designator		LWD	Leader	Number Persons	Drop Off PT./Time	Pick Up PT./Time
HC1 ELDORADO IHC C-71		08/21	AARON HUMPHREY	20	/0600	/1800
HC2I TRINITY C-49		08/20	ARRON UTTERBACK	19	/0600	/1800
HC2I T2IA - GFP 15C C-67		08/21	JASON CAMPBELL	20	/0600	/1800
ENG3 ENGINE #6958 E-197		08/24	CHRIS ADER	5	/0600	/1800
ENG6 RED TRUCK WILDFIRE RTW 64 E-192		08/26	CHRIS MARTIN	3	/0600	/1800
ENG6 JD FIRE SUPPRESSION E-208		08/18	SCOTT VAN BOVRUM	3	/0600	/1800
ENG6 WOOD'S FIRE E-209		08/27	STEVE FELIX	3	/0600	/1800
***TFLD O-309		08/19	SEAN ELLIOTT	1	/0600	/1800
***ENG3 SPENCE IND E-172		08/17	BILL MURRAY		/0600	/1800
***ENG4 SUNDANCE 2 E-173		08/28	ROBERT STIGEN	3	/0600	/1800
***ENG4 DAVID CARROLL LLC E-174		08/19	PHILLIP RIFENBERY	3	/0600	/1800
***ENG4 ENGINE - T4 - SUNDANCE 3 E-175		08/27	DAN MENA	3	/0600	/1800
WTS2 KISER E-55		08/18	KYLE KISER	1	/0600	/1800
WTS2 DARRAH E-72		08/23	STEVE DARGER	1	/0600	/1800
WTS2 THOMAS HORN E-99 *SEE CHECK IN*		08/17	CHRIS WILSON	1	/0600	/1800
DOZ1 DARRAH W/TRANS E-7		08/22	GARY QUINONES	2	/0600	/1800
DOZ2 IAQUA W/TRANS E-5		08/23	JAKE MOORE	2	/0600	/1800
DOZ2 DARRAH W/TRANS E-6		08/19	KEITH DARRAH	2	/0600	/1800
8. Division/Group Communication Summary						
Function	Channel	RX Frequency N/W	RX Tone/NAC	TX Frequency N/W	TX Tone/NAC	Mode
COMMAND	7 - CMD 7	166.6125 N	TONE 4 (136.5)	168.4000 N	TONE 4 (136.5)	A
COMMAND	9 - CMD 9	173.0625 N	TONE 4 (136.5)	166.1250 N	TONE 4 (136.5)	A
TACTICAL	4 - TAC 5	166.7250 N	TONE 4 (136.5)	166.7250 N	TONE 4 (136.5)	A
AIR TO GROUND	13 - A/G CMD	169.2000 N	NONE	169.2000 N	NONE	A
AIR TO GROUND	14 - A/G TAC	167.0625 N	NONE	167.0625 N	NONE	A
AIR GUARD	16 - AIR GUARD	168.6250 N	NONE	168.6250 N	TONE 1 (110.9)	A
9. Prepared By (Resource Unit Leader)			Approved By (Planning Section Chief)		Date	Time
HOFFMAN; REZENDE			DENA CHAVEZ		08/17/2017	0755

Division/Group Assignment List (ICS 204 WF)

1. Incident Name:			3.			
ORLEANS COMPLEX			Branch:		Division/Group:	
2. Operational Period:			DAY/ NIGHT			
Date/Time From: 08/18/2017 0600 FRI		Date/Time To: 08/19/2017 0600 SAT				
			W			
4. Operations Personnel						
OPERATIONS CHIEF		TOPOLESKI; MARINELLI (T)		PLANNING OPERATIONS		
				GIPSON; HAYES		
DIVISION/GROUP SUPERVISOR		MATTHEW AHEARN		AIR ATTACK SUPERVISOR		
				TED VISSER		
5. Resources Assigned this Period						
Strike Team / Task Force / Resource Designator		LWD	Leader	Number Persons	Drop Off PT./Time	Pick Up PT./Time
EXCA T2 - NORTH RIVERS CONSTRUCTION, INC. - 107 E-221		08/30	JESSE DOWNEY	2	/0600	/1800
EXCA T2 - KEN'S WATER TENDER, INC. - C60698 - 6 E-222		08/30	KEN SMITH	2	/0600	/1800
SKD2 WYEAST FORESTRY E-156		08/22	GARY LEVIN	2	/0600	/1800
MAST NORTHSTATE W/TRANS E-13		08/29	BOB STENT	1	/0600	/1800
MAST ALLEN'S W/TRANS E-14		08/25	JUSTIN MEACHAM	2	/0600	/1800
MAST PAT DENIS W/TRANS E-60		08/29	ALLAN WESTLUND	2	/0600	/1800
CHIP ALLEN'S WATER TENDER SERVICE, INC. - BA E-205		08/18	TOM ALLEN	2	/0600	/1800
CHIP TOUGH EQUIPMENT INC. CHIP1 E-206		08/28	MARK HAMILTON	2	/0600	/1800
FAL1 MODULE - FALLER - NORTH ZONE O-109		08/28	STEVE DAVIS	2	/0600	/1800
FAL1 MODULE - FALLER - NORTH ZONE O-110		08/28	GARY BURG	2	/0600	/1800
FAL1 MODULE - FALLER - MICHAEL MOEN O-111		08/20	MOEN	2	/0600	/1800
FAL1 MODULE - FALLER - NORTH ZONE O-149		08/20	BROWN/ PARKER	2	/0600	/1800
FAL1 MODULE - FALLER - NORTH ZONE O-150		08/20	SULIVAN/ SMITH		/0600	/1800
FELB O-236		08/18	TODD J MIRANDA	1	/0600	/1800
FELB O-353		08/28	SAMUEL C HEFFNER	1	/0600	/1800
HEQB O-268		08/20	CHRIS JARC (T)	1	/0600	/1800
CULS O-289		08/22	FRANKLIN E DONAHUE	1	/0600	/1800
READ O-409		08/31	KENNETH GRIGGS	1	/0600	/1800
8. Division/Group Communication Summary						
Function	Channel	RX Frequency N/W	RX Tone/NAC	TX Frequency N/W	TX Tone/NAC	Mode
COMMAND	7 - CMD 7	166.6125 N	TONE 4 (136.5)	168.4000 N	TONE 4 (136.5)	A
COMMAND	9 - CMD 9	173.0625 N	TONE 4 (136.5)	166.1250 N	TONE 4 (136.5)	A
TACTICAL	4 - TAC 5	166.7250 N	TONE 4 (136.5)	166.7250 N	TONE 4 (136.5)	A
AIR TO GROUND	13 - A/G CMD	169.2000 N	NONE	169.2000 N	NONE	A
AIR TO GROUND	14 - A/G TAC	167.0625 N	NONE	167.0625 N	NONE	A
AIR GUARD	16 - AIR GUARD	168.6250 N	NONE	168.6250 N	TONE 1 (110.9)	A
9. Prepared By (Resource Unit Leader)			Approved By (Planning Section Chief)		Date	Time
HOFFMAN; REZENDE			DENA CHAVEZ		08/17/2017	0755

Division/Group Assignment List (ICS 204 WF)

1. Incident Name:			3.			
ORLEANS COMPLEX			Branch:		Division/Group: W	
2. Operational Period: DAY/ NIGHT						
Date/Time From: 08/18/2017 0600 FRI		Date/Time To: 08/19/2017 0600 SAT				
4. Operations Personnel						
OPERATIONS CHIEF		TOPOLESKI; MARINELLI (T)		PLANNING OPERATIONS		GIPSON; HAYES
DIVISION/GROUP SUPERVISOR		MATTHEW AHEARN		AIR ATTACK SUPERVISOR		TED VISSER
5. Resources Assigned this Period						
Strike Team / Task Force / Resource Designator		LWD	Leader	Number Persons	Drop Off PT./Time	Pick Up PT./Time
SOFR O-356		08/27	MICHAEL CRAIG CAMBA	1	/0600	/1800
SOF2 O-241		08/19	THOMAS COLETTI (T)	1	/0600	/1800
FEMP O-340		08/26	MATT FIELDS	1	/0600	/1800
FEMP O-342		08/26	RICHARD TALIAFERRO	1	/0600	/1800
O-436			Walker			
6. Control Operations/Work Assignments:						
Mitigate hazard trees and improve road system, in consideration of fire coming out of wilderness. Monitor fire activity on indirect containment lines preparing to tactically ignite if fire behavior dictates. Ensure Ignition plan has been completed and approved before any tactical ignitions begin. *** Task Force East from page 1						
7. Special Instructions:						
Consult with READ/Tribal Consultant for any new line construction. Draft from approved sites only. READ Ann Brown will be available in DIVs V and W. Heritage Consultant Ray Marquez-Griffin will be POC for ALL Divisions. Heritage Consultant Franklin Donahue will be available for all Divisions. READs and Heritage Consultants check in with DIVs when entering and exiting Divisions						
8. Division/Group Communication Summary						
Function	Channel	RX Frequency N/W	RX Tone/NAC	TX Frequency N/W	TX Tone/NAC	Mode
COMMAND	7 - CMD 7	166.6125 N	TONE 4 (136.5)	168.4000 N	TONE 4 (136.5)	A
COMMAND	9 - CMD 9	173.0625 N	TONE 4 (136.5)	166.1250 N	TONE 4 (136.5)	A
TACTICAL	4 - TAC 5	166.7250 N	TONE 4 (136.5)	166.7250 N	TONE 4 (136.5)	A
AIR TO GROUND	13 - A/G CMD	169.2000 N	NONE	169.2000 N	NONE	A
AIR TO GROUND	14 - A/G TAC	167.0625 N	NONE	167.0625 N	NONE	A
AIR GUARD	16 - AIR GUARD	168.6250 N	NONE	168.6250 N	TONE 1 (110.9)	A
9. Prepared By (Resource Unit Leader)			Approved By (Planning Section Chief)		Date	Time
HOFFMAN; REZENDE			DENA CHAVEZ		08/17/2017	0755

Division/Group Assignment List (ICS 204 WF)

1. Incident Name:		3.				
ORLEANS COMPLEX		Branch:		Division/Group:		
2. Operational Period:		DAY/ NIGHT		Z		
Date/Time From: 08/18/2017 0600 FRI	Date/Time To: 08/19/2017 0600 SAT					
4. Operations Personnel						
OPERATIONS CHIEF		TOPOLESKI; MARINELLI (T)		PLANNING OPERATIONS		
				GIPSON; HAYES		
DIVISION/GROUP SUPERVISOR		GREGOR; LARA (T)		AIR ATTACK SUPERVISOR		
				TED VISSER		
5. Resources Assigned this Period						
Strike Team / Task Force / Resource Designator	LWD	Leader	Number Persons	Drop Off PT./Time	Pick Up PT./Time	
S/T - T3 - 1651 C E-225	08/24	RYAN WEBSTER	27	/0600	/1800	
ENG3 SNF ENGINE 42 E-65	08/20	MIKE SCHMALL	5	/0600	/1800	
ENG3 ASF - ENGINE 374 E-201	08/22	TYLER RAND HALL	5	/0600	/1800	
ENG3 ENGINE - T3 - 366 E-215	08/28	NATHAN THOMPSON	5	/0600	/1800	
ENG3 ENGINE - T3 - 365 E-216	08/28	RYAN CULLEN	5	/0600	/1800	
ENG3 ENGINE 370 E-218	08/22	JOHN SPANARELLA	4	/0600	/1800	
ENG3 ENGINE - T3 - CARBONDALE - ENGINE 85 E-219	08/23	JAKE SPAULDING	3	/0600	/1800	
ENG6 FIRESTORM 9904 E-211	08/18	JOSHUA BRADLEY <i>Tobey Behr</i>	3	/0600	/1800	
WTS2 DARRAH E-56	08/22	WAYNE VIRAG	1	/0600	/1800	
WTS2 DARRAH E-57	08/24	PAUL GUIDUCCI	1	/0600	/1800	
WTS2 DARRAH E-73	08/27	BALDWIN CRYSTAL	1	/0600	/1800	
WTS2 DARRAH E-74	08/22	TAMI QUINONES	1	/0600	/1800	
MISC PORTABLE HYDRANT - BART MACE - E-95	08/29	KEITH READING	1	/0600	/1800	
TFLD O-406	08/28	MICHAEL SWEANY	1	/0600	/1800	
SOFR O-369		JACK D HOLLOWAY	1	/0600	/1800	
SOFR O-288.53	08/23	JON W GARBER	1	/0600	/1800	
EMS ASSIGNMENTS ON NEXT PAGE						
WORK ASSIGNMENTS ON NEXT PAGE						
8. Division/Group Communication Summary						
Function	Channel	RX Frequency N/W	RX Tone/NAC	TX Frequency N/W	TX Tone/NAC	Mode
COMMAND	7 - CMD 7	166.6125 N	TONE 4 (136.5)	168.4000 N	TONE 4 (136.5)	A
COMMAND	9 - CMD 9	173.0625 N	TONE 4 (136.5)	166.1250 N	TONE 4 (136.5)	A
TACTICAL	6 - TAC 7	168.2500 N	TONE 4 (136.5)	168.2500 N	TONE 4 (136.5)	A
AIR TO GROUND	13 - A/G CMD	169.2000 N	NONE	169.2000 N	NONE	A
AIR TO GROUND	14 - A/G TAC	167.0625 N	NONE	167.0625 N	NONE	A
AIR GUARD	16 - AIR GUARD	168.6250 N	NONE	168.6250 N	TONE 1 (110.9)	A
9. Prepared By (Resource Unit Leader)		Approved By (Planning Section Chief)		Date	Time	
REZENDE/ HOFFMAN		DENA CHAVEZ		08/17/2017	0755	

Division/Group Assignment List (ICS 204 WF)

1. Incident Name:			3.			
ORLEANS COMPLEX			Branch:		Division/Group:	
2. Operational Period: DAY/ NIGHT					Z	
Date/Time From: 08/18/2017 0600 FRI	Date/Time To: 08/19/2017 0600 SAT					
4. Operations Personnel						
OPERATIONS CHIEF		TOPOLESKI; MARINELLI (T)		PLANNING OPERATIONS		
				GIPSON; HAYES		
DIVISION/GROUP SUPERVISOR		GREGOR; LARA (T)		AIR ATTACK SUPERVISOR		
				TED VISSER		
5. Resources Assigned this Period						
Strike Team / Task Force / Resource Designator	LWD	Leader	Number Persons	Drop Off PT./Time	Pick Up PT./Time	
0-432 REMS 1 O-300	8/25	CREIGLOW	2	/0600	/1800	
EMTF O-155	08/15	SCOTT A DRAKE	1	/0600	/1800	
FEMP O-344	08/27	SCOTT BLANDFORD	1	/0600	/1800	
6. Control Operations/Work Assignments:						
Mitigate hazard trees. Patrol fires Zulu 1-7. Back haul any excess equipment and trash. Work south on 15N17 road improving road system for holding. Monitor fire activity on indirect containment lines preparing to tactically ignite if fire behavior dictates. Ensure Ignition plan has been completed and approved before any tactical ignitions begin.						
7. Special Instructions:						
Consult with READ/Tribal Consultant for any new line construction and with land owners when possible. Stay within existing dozer line footprint. Draft from approved sites only. READs and Heritage Consultants check in with DIVs when entering and exiting Divisions						
8. Division/Group Communication Summary						
Function	Channel	RX Frequency N/W	RX Tone/NAC	TX Frequency N/W	TX Tone/NAC	Mode
COMMAND	7 - CMD 7	166.6125 N	TONE 4 (136.5)	168.4000 N	TONE 4 (136.5)	A
COMMAND	9 - CMD 9	173.0625 N	TONE 4 (136.5)	166.1250 N	TONE 4 (136.5)	A
TACTICAL	6 - TAC 7	168.2500 N	TONE 4 (136.5)	168.2500 N	TONE 4 (136.5)	A
AIR TO GROUND	13 - A/G CMD	169.2000 N	NONE	169.2000 N	NONE	A
AIR TO GROUND	14 - A/G TAC	167.0625 N	NONE	167.0625 N	NONE	A
AIR GUARD	16 - AIR GUARD	168.6250 N	NONE	168.6250 N	TONE 1 (110.9)	A
9. Prepared By (Resource Unit Leader)			Approved By (Planning Section Chief)		Date	Time
REZENDE/ HOFFMAN			DENA CHAVEZ		08/17/2017	0755

Division/Group Assignment List (ICS 204 WF)

1. Incident Name:			3.			
ORLEANS COMPLEX			Branch:		Division/Group:	
2. Operational Period:			CREEK GROUP			
DAY/ NIGHT						
Date/Time From: 08/18/2017 0600 FRI		Date/Time To: 08/19/2017 0600 SAT				
4. Operations Personnel						
OPERATIONS CHIEF		TOPOLESKI; MARINELLI (T)		PLANNING OPERATIONS		GIPSON; HAYES
DIVISION/GROUP SUPERVISOR		JAMIE MILLER		AIR ATTACK SUPERVISOR		TED VISSER
5. Resources Assigned this Period						
Strike Team / Task Force / Resource Designator		LWD	Leader	Number Persons	Drop Off PT./Time	Pick Up PT./Time
HC2 MODULE - WILDLAND FIRE - RM - PLATTE CANYON WFM 5 O-360		08/28	SHELBY G EDWARDS	11	/0600	/1800
READ O-374		08/30	MATT HILLMAN	1	/0600	/1800
REMS 4 O-365		08/27	JOSEPH PATRICK MATHIAS	2	/0600	/1800
FEMP O-391		08/21	TYLER BRIAN HAGIE	1	/0600	/1800
6. Control Operations/Work Assignments:						
Access options to check fire in Wooley Creek						
7. Special Instructions:						
Consult with READ/Tribal Consultant for any new line construction and with land owners when possible. Stay within existing dozer line footprint. Draft from approved sites only. Heritage Consultant Ray Marquez-Griffin will be POC for ALL Divisions. Heritage Consultant Franklin Donahue will be available for all Divisions. READs and Heritage Consultants check in with DIVs when entering and exiting Divisions						
8. Division/Group Communication Summary						
Function	Channel	RX Frequency N/W	RX Tone/NAC	TX Frequency N/W	TX Tone/NAC	Mode
COMMAND	7 - CMD 7	166.6125 N	TONE 4 (136.5)	168.4000 N	TONE 4 (136.5)	A
COMMAND	9 - CMD 9	173.0625 N	TONE 4 (136.5)	166.1250 N	TONE 4 (136.5)	A
TACTICAL	3 - TAC 3	168.6000 N	TONE 4 (136.5)	168.6000 N	TONE 4 (136.5)	A
AIR TO GROUND	13 - A/G CMD	169.2000 N	NONE	169.2000 N	NONE	A
AIR TO GROUND	14 - A/G TAC	167.0625 N	NONE	167.0625 N	NONE	A
AIR GUARD	16 - AIR GUARD	168.6250 N	NONE	168.6250 N	TONE 1 (110.9)	A
9. Prepared By (Resource Unit Leader)			Approved By (Planning Section Chief)		Date	Time
REZENDE/ HOFFMAN			DENA CHAVEZ		08/17/2017	0755

Division/Group Assignment List (ICS 204 WF)

1. Incident Name:			3.				
ORLEANS COMPLEX			Branch:		Division/Group:		
2. Operational Period: DAY/ NIGHT					STRUCTURE GROUP		
Date/Time From: 08/18/2017 0600 FRI	Date/Time To: 08/19/2017 0600 SAT						
4. Operations Personnel							
OPERATIONS CHIEF		TOPOLESKI; MARINELLI (T)		PLANNING OPERATIONS		GIPSON; HAYES	
DIVISION/GROUP SUPERVISOR		LAWRENCE; MCHARGUE (T)		AIR ATTACK SUPERVISOR		TED VISSER	
5. Resources Assigned this Period							
Strike Team / Task Force / Resource Designator		LWD	Leader		Number Persons	Drop Off PT./Time	Pick Up PT./Time
FOBS O-288.24		08/23	JUSTIN WILSON (T)		1	/0600	/1800
6. Control Operations/Work Assignments:							
Gather information, assess historical and natural barriers							
7. Special Instructions:							
Heritage Consultant Ray Marquez-Griffin will be POC for ALL Divisions. Heritage Consultant Franklin Donahue will be available for all Divisions. READs and Heritage Consultants check in with DIVs when entering and exiting Divisions							
8. Division/Group Communication Summary							
Function	Channel	RX Frequency N/W	RX Tone/NAC	TX Frequency N/W	TX Tone/NAC	Mode	
COMMAND	7 - CMD 7	166.6125 N	TONE 4 (136.5)	168.4000 N	TONE 4 (136.5)	A	
COMMAND	9 - CMD 9	173.0625 N	TONE 4 (136.5)	166.1250 N	TONE 4 (136.5)	A	
TACTICAL	2 - TAC 2	168.2000 N	TONE 4 (136.5)	168.2000 N	TONE 4 (136.5)	A	
AIR TO GROUND	13 - A/G CMD	169.2000 N	NONE	169.2000 N	NONE	A	
AIR TO GROUND	14 - A/G TAC	167.0625 N	NONE	167.0625 N	NONE	A	
AIR GUARD	16 - AIR GUARD	168.6250 N	NONE	168.6250 N	TONE 1 (110.9)	A	
9. Prepared By (Resource Unit Leader)			Approved By (Planning Section Chief)		Date	Time	
REZENDE/HOFFMAN			DENA CHAVEZ		08/17/2017	0755	

Division/Group Assignment List (ICS 204 WF)

1. Incident Name:			3.			
ORLEANS COMPLEX			Branch:		Division/Group:	
2. Operational Period:			WEST GROUP (PAGE 1 OF 4)			
DAY/ NIGHT						
Date/Time From: 08/18/2017 0600 FRI		Date/Time To: 08/19/2017 0600 SAT				
4. Operations Personnel						
OPERATIONS CHIEF		TOPOLESKI; MARINELLI (T)		PLANNING OPERATIONS		GIPSON; HAYES
DIVISION/GROUP SUPERVISOR		NUTTALL; BLAKE (T)		AIR SUPPPORT		TED VISSER
5. Resources Assigned this Period						
Strike Team / Task Force / Resource Designator		LWD	Leader	Number Persons	Drop Off PT./Time	Pick Up PT./Time
HC2 CREW - T2 - OC 51 C-73		08/21	CORONADO/ LARGE(T)	21	/0600	/1800
AMBU HOOPA AMBULANCE E-157		08/19	N/A	2	/0600	/1800
SOFR O-283		08/23	FRED JOHNSON	1	/0600	/1800
SOFR O-231		08/19	PETER GOETZINGER	1	/0600	/1800
REMS 2 O-299		08/24	LARRY SILVA	2	/0600	/1800
EMTF O-194		08/19	CHRISTINA ITABASHI	1	/0600	/1800
FEMP O-362		08/27	JONATHAN WHITE	1	/0600	/1800
FEMP O-363		08/27	JUSTIN VANDERHULST	1	/0600	/1800
6. Control Operations/Work Assignments:						
Continue Prep along Nickowitz and GO Roads						
7. Special Instructions:						
<p>14N03 IS CLOSED TO ALL FIRE TRAFFIC</p> <p>STEP 1. IDENTIFY POTENTIAL CONFINEMENT FEATURES.</p> <p>STEP 2. WORK WITH LEAD READ FOR APPROVAL THROUGH HERITAGE READ.</p> <p>STEP 3. CONCURRENCE WITH TRIBAL HERITAGE CONSULTANT COORDINATOR FOR APPROVAL.</p> <p>STEP 4. IMPLEMENT.</p> <p>LIMIT AERIAL DISTURBANCES OVER CULTURALLY SENSITIVE AREAS IN THE WILDERNESS.</p> <p>READs and Heritage Consultants check in with DIVs when entering and exiting Divisions</p>						
8. Division/Group Communication Summary						
Function	Channel	RX Frequency N/W	RX Tone/NAC	TX Frequency N/W	TX Tone/NAC	Mode
COMMAND	8 - CMD 8	170.6875 N	TONE 4 (136.5)	166.5750 N	TONE 4 (136.5)	A
COMMAND	9 - CMD 9	173.0625 N	TONE 4 (136.5)	166.1250 N	TONE 4 (136.5)	A
TACTICAL	5 - TAC 6	166.7750 N	TONE 4 (136.5)	166.7750 N	TONE 4 (136.5)	A
AIR TO GROUND	13 - A/G CMD	169.2000 N	NONE	169.2000 N	NONE	A
AIR TO GROUND	14 - A/G TAC	167.0625 N	NONE	167.0625 N	NONE	A
AIR GUARD	16 - AIR GUARD	168.6250 N	NONE	168.6250 N	TONE 1 (110.9)	A
9. Prepared By (Resource Unit Leader)			Approved By (Planning Section Chief)		Date	Time
REZENDE/ HOFFMAN			DENA CHAVEZ		08/17/2017	0755

Division/Group Assignment List (ICS 204 WF)

1. Incident Name:			3.			
ORLEANS COMPLEX			Branch:		Division/Group: WEST GROUP (PAGE 2 OF 4)	
2. Operational Period: DAY/ NIGHT						
Date/Time From: 08/18/2017 0600 FRI		Date/Time To: 08/19/2017 0600 SAT				
4. Operations Personnel						
OPERATIONS CHIEF		TOPOLESKI; MARINELLI (T)		PLANNING OPERATIONS		GIPSON; HAYES;
DIVISION/GROUP SUPERVISOR		NUTTALL; BLAKE (T)		AIR ATTACK SUPERVISOR		TED VISSER
5. Resources Assigned this Period						
Strike Team / Task Force / Resource Designator		LWD	Leader	Number Persons	Drop Off PT./Time	Pick Up PT./Time
*** TASK FORCE 1 ***						
TFLD O-209 <i>on R + R back 8/19</i>		09/01	STEVEN SHYKES	1	/0600	/1800
TFLD O-428		08/28	NELS NELSON (T)	1	/0600	/1800
HC2 INF CREW 4 C-53		08/22	MOOREHEAD/ COPELAND(T)	20	/0600	/1800
CHIP CUT WRIGHT E-22		08/26	TODD WRIGHT	2	/0600	/1800
CHIP NORTH ZONE E-149 <i>renew 8/18</i>		08/18	LARRY REED	2	/0600	/1800
6. Control Operations/Work Assignments:						
Continue Prep along Nickowitz and GO Roads						
7. Special Instructions:						
<p>14N03 IS CLOSED TO ALL FIRE TRAFFIC</p> <p>STEP 1. IDENTIFY POTENTIAL CONFINEMENT FEATURES.</p> <p>STEP 2. WORK WITH LEAD READ FOR APPROVAL THROUGH HERITAGE READ.</p> <p>STEP 3. CONCURRENCE WITH TRIBAL HERITAGE CONSULTANT COORDINATOR FOR APPROVAL.</p> <p>STEP 4. IMPLEMENT.</p> <p>LIMIT AERIAL DISTURBANCES OVER CULTURALLY SENSITIVE AREAS IN THE WILDERNESS.</p> <p>READs and Heritage Consultants check in with DIVs when entering and exiting Divisions</p>						
8. Division/Group Communication Summary						
Function	Channel	RX Frequency N/W	RX Tone/NAC	TX Frequency N/W	TX Tone/NAC	Mode
COMMAND	8 - CMD 8	170.6875 N	TONE 4 (136.5)	166.5750 N	TONE 4 (136.5)	A
COMMAND	9 - CMD 9	173.0625 N	TONE 4 (136.5)	166.1250 N	TONE 4 (136.5)	A
TACTICAL	5 - TAC 6	166.7750 N	TONE 4 (136.5)	166.7750 N	TONE 4 (136.5)	A
AIR TO GROUND	13 - A/G CMD	169.2000 N	NONE	169.2000 N	NONE	A
AIR TO GROUND	14 - A/G TAC	167.0625 N	NONE	167.0625 N	NONE	A
AIR GUARD	16 - AIR GUARD	168.6250 N	NONE	168.6250 N	TONE 1 (110.9)	A
9. Prepared By (Resource Unit Leader)			Approved By (Planning Section Chief)		Date	Time
REZENDE/HOFFMAN			DENA CHAVEZ		08/17/2017	0755

Division/Group Assignment List (ICS 204 WF)

1. Incident Name:			3.			
ORLEANS COMPLEX			Branch:		Division/Group:	
2. Operational Period:			WEST GROUP (PAGE 3 OF 4)			
DAY/ NIGHT						
Date/Time From: 08/18/2017 0600 FRI		Date/Time To: 08/19/2017 0600 SAT				
4. Operations Personnel						
OPERATIONS CHIEF		TOPOLESKI; MARINELLI (T)		PLANNING OPERATIONS		GIPSON, HAYES
DIVISION/GROUP SUPERVISOR		NUTTALL; BLAKE (T)		AIR ATTACK SUPERVISOR		TED VISSER
5. Resources Assigned this Period						
Strike Team / Task Force / Resource Designator		LWD	Leader	Number Persons	Drop Off PT./Time	Pick Up PT./Time
*** TASK FORCE 2 ***						
TFLD O-248 - <i>Demob</i>		08/18	JOHN WARD	1	/0600	/1800
FELB O-235 - <i>extended 21</i>		08/19	ROBERT KEYSE	1	/0600	/1800
FAL1 MODULE - FALLER - NOR CAL O-112		08/28	GUY/ GORMAN	2	/0600	/1800
FAL1 MODULE - FALLER - NOR CAL O-113		08/29	BLACK/ JACKS	2	/0600	/1800
FAL1 MODULE - FALLER - NORTH ZONE O-152		08/29	STEWARD/ FOUSHEE	2	/0600	/1800
FAL1 MILLER WOOD O-260 - <i>recrew</i>		08/18	WOOD/ WYLIE	2	/0600	/1800
HEQB O-244 - <i>Demob</i>		08/19	DARBY STARR (T)	1	/0600	/1800
MISC LOG LOADER E-162 *SEE CHECK IN* <i>recrew 8/18</i>		08/22	CHRIS SHERER		/0600	/1800
6. Control Operations/Work Assignments:						
Continue Prep along Nickowitz and GO Roads 0-258						
7. Special Instructions:						
14N03 IS CLOSED TO ALL FIRE TRAFFIC STEP 1. IDENTIFY POTENTIAL CONFINEMENT FEATURES. STEP 2. WORK WITH LEAD READ FOR APPROVAL THROUGH HERITAGE READ. STEP 3. CONCURRENCE WITH TRIBAL HERITAGE CONSULTANT COORDINATOR FOR APPROVAL. STEP 4. IMPLEMENT. LIMIT AERIAL DISTURBANCES OVER CULTURALLY SENSITIVE AREAS IN THE WILDERNESS. READS and Heritage Consultants check in with DIVs when entering and exiting Divisions						
8. Division/Group Communication Summary						
Function	Channel	RX Frequency N/W	RX Tone/NAC	TX Frequency N/W	TX Tone/NAC	Mode
COMMAND	8 - CMD 8	170.6875 N	TONE 4 (136.5)	166.5750 N	TONE 4 (136.5)	A
COMMAND	9 - CMD 9	173.0625 N	TONE 4 (136.5)	166.1250 N	TONE 4 (136.5)	A
TACTICAL	5 - TAC 6	166.7750 N	TONE 4 (136.5)	166.7750 N	TONE 4 (136.5)	A
AIR TO GROUND	13 - A/G CMD	169.2000 N	NONE	169.2000 N	NONE	A
AIR TO GROUND	14 - A/G TAC	167.0625 N	NONE	167.0625 N	NONE	A
AIR GUARD	16 - AIR GUARD	168.6250 N	NONE	168.6250 N	TONE 1 (110.9)	A
9. Prepared By (Resource Unit Leader)			Approved By (Planning Section Chief)		Date	Time
REZENDE/HOFFMAN			DENA CHAVEZ		08/17/2017	0755

Division/Group Assignment List (ICS 204 WF)

1. Incident Name:		3.				
ORLEANS COMPLEX		Branch:		Division/Group:		
2. Operational Period:		WEST GROUP (PAGE 4 OF 4)				
DAY/ NIGHT						
Date/Time From: 08/18/2017 0600 FRI	Date/Time To: 08/19/2017 0600 SAT					
4. Operations Personnel						
OPERATIONS CHIEF		TOPOLESKI; MARINELLI (T)		PLANNING OPERATIONS		
				GIPSON; HAYES		
DIVISION/GROUP SUPERVISOR		NUTTALL; BLAKE (T)		AIR ATTACK SUPERVISOR		
				TED VISSER		
5. Resources Assigned this Period						
Strike Team / Task Force / Resource Designator	LWD	Leader	Number Persons	Drop Off PT./Time	Pick Up PT./Time	
*** TASK FORCE 4 ***						
TFLD O-212	08/22	KEVIN LABELLA	1	/0600	/1800	
HC2 MQ FRANCO REFORESTATION C-51	08/28	JAMIE DAVILA	20	/0600	/1800	
HC2 CHICO 22 C-57	08/24	ANTOINE WASHINGTON	21	/0600	/1800	
HC2 CREW SAN CARLOS T2 C-60	08/27	WAYNE KEY	20	/0600	/1800	
HC2 HIA CREW 1 O-138	08/27	LYLE MCKINNON	11	/0600	/1800	
ENG6 ENGINE - T6 - SOUTHERN ROCKY E-190	08/19	HORACE COMANCHE	3	/0600	/1800	
MAST LEPAGE E-146 <i>ext 21</i> <i>recrew</i>	08/19	CHASE ROOT	2	/0600	/1800	
6. Control Operations/Work Assignments:						
Continue Prep along Nickowitz and GO Roads						
7. Special Instructions:						
<p>14N03 IS CLOSED TO ALL FIRE TRAFFIC</p> <p>STEP 1. IDENTIFY POTENTIAL CONFINEMENT FEATURES.</p> <p>STEP 2. WORK WITH LEAD READ FOR APPROVAL THROUGH HERITAGE READ.</p> <p>STEP 3. CONCURRENCE WITH TRIBAL HERITAGE CONSULTANT COORDINATOR FOR APPROVAL.</p> <p>STEP 4. IMPLEMENT.</p> <p>LIMIT AERIAL DISTURBANCES OVER CULTURALLY SENSITIVE AREAS IN THE WILDERNESS.</p> <p>READS and Heritage Consultants check in with DIVs when entering and exiting Divisions</p>						
8. Division/Group Communication Summary						
Function	Channel	RX Frequency N/W	RX Tone/NAC	TX Frequency N/W	TX Tone/NAC	Mode
COMMAND	8 - CMD 8	170.6875 N	TONE 4 (136.5)	166.5750 N	TONE 4 (136.5)	A
COMMAND	9 - CMD 9	173.0625 N	TONE 4 (136.5)	166.1250 N	TONE 4 (136.5)	A
TACTICAL	5 - TAC 6	166.7750 N	TONE 4 (136.5)	166.7750 N	TONE 4 (136.5)	A
AIR TO GROUND	13 - A/G CMD	169.2000 N	NONE	169.2000 N	NONE	A
AIR TO GROUND	14 - A/G TAC	167.0625 N	NONE	167.0625 N	NONE	A
AIR GUARD	16 - AIR GUARD	168.6250 N	NONE	168.6250 N	TONE 1 (110.9)	A
9. Prepared By (Resource Unit Leader)			Approved By (Planning Section Chief)		Date	Time
REZENDE/HOFFMAN			DENA CHAVEZ		08/17/2017	0755

Division/Group Assignment List (ICS 204 WF)

1. Incident Name:			3.				
ORLEANS COMPLEX			Branch:		Division/Group:		
2. Operational Period:			NIGHT				
DAY/ NIGHT							
Date/Time From: 08/18/2017 0600 FRI		Date/Time To: 08/19/2017 0600 SAT					
4. Operations Personnel							
OPERATIONS CHIEF		TOPOLESKI; MARINELLI (T)		PLANNING OPERATIONS		GIPSON; HAYES	
DIVISION/GROUP SUPERVISOR		DOWNARD/ GOMEZ		AIR ATTACK SUPERVISOR		TED VISSER	
5. Resources Assigned this Period							
Strike Team / Task Force / Resource Designator		LWD	Leader		Number Persons	Drop Off PT./Time	Pick Up PT./Time
ENG3 ELK CREEK ENGINE 433 E-136		08/25	JAYSON PAPANFUS		4	/1800	/0600
ENG3 HOLTER, PAULA - A30677 - 301 E-198		08/25	MIKE STUTTS		3	/1800	/0600
ENG3 AZ ADL BR-171 E-199		08/29	RICHARD JAMES WILLIAMS		4	/1800	/0600
ENG3 AZ-SED E-200		08/22	PHILLIP D BRUGLIO		4	/1800	/0600
ENG6 ROCKY POINT E-191		08/27	RYAN MITCHELL		3	/1800	/0600
6. Control Operations/Work Assignments:							
Patrol, monitor, and keep fire within containment strategy.							
7. Special Instructions:							
READs and Heritage Consultants check in with DIVs when entering and exiting Divisions							
8. Division/Group Communication Summary							
Function	Channel	RX Frequency N/W	RX Tone/NAC	TX Frequency N/W	TX Tone/NAC	Mode	
COMMAND	7 - CMD 7	166.6125 N	TONE 4 (136.5)	168.4000 N	TONE 4 (136.5)	A	
COMMAND	9 - CMD 9	173.0625 N	TONE 4 (136.5)	166.1250 N	TONE 4 (136.5)	A	
TACTICAL	1 - TAC 1	168.0500 N	TONE 4 (136.5)	168.0500 N	TONE 4 (136.5)	A	
AIR TO GROUND	13 - A/G CMD	169.2000 N	NONE	169.2000 N	NONE	A	
AIR TO GROUND	14 - A/G TAC	167.0625 N	NONE	167.0625 N	NONE	A	
AIR GUARD	16 - AIR GUARD	168.6250 N	NONE	168.6250 N	TONE 1 (110.9)	A	
9. Prepared By (Resource Unit Leader)			Approved By (Planning Section Chief)		Date	Time	
REZENDE' HOFFMAN			DENA CHAVEZ		08/17/2017	0755	

This Page Is Intentionally Left Blank

AIR OPERATIONS SUMMARY

Prepared By: Ted Visser
Ted Visser

Prepared Date: 17 Aug 2017

Prepared Time: 1900

1. INCIDENT NAME: Orleans Complex	2. OPS PERIOD DATE: 18 Aug -2017	START TIME: 0800	END TIME: 2100	SUNRISE: 0624	SUNSET: 2006
3. REMARKS (Safety Notes, Hazards, Air Operations Special Equipment, etc.): MONITOR AIR TO GROUND FREQ WHEN AIRCRAFT ARE IN YOUR DIVISION. SITUATIONAL AWARENESS IS HIGH PRIORITY ALONG WITH BUCKET WORK! FLY WITH LIGHTS AND TRANDSPONDER ON (1255) <u>Watch out for high tension wires</u>					
4. READY ALERT AIRCRAFT MEDEVAC - See Medical Plan H-407 Cell 657-464-7830		5. TFR #: 73069 Altitude - 11,000 msl Scott Valley HB Notam: 80/038 126.1250			

6. PERSONNEL	NAME	PHONE #	7. FREQUENCIES	AM	FM	8. FIXED-WING- Type/ Make-Model/ N#/ Base
AOBD	Scott Valley Airport	916-500-2366	Scott Valley(A30)Tower	128.625		Base
	Ted Visser ICP Office	619-981-2409 619-359-3344	AIR/ AIR F/W Air To Air R/W Orleans	126.1250 118.0750		AIRTANKERS- TBA
ASGS	Randy Carter	501-802-6708	AIR Tactics FW AIR/GD Command Orleans		168.5000 169.2000	LEAD PLANES- TBA ATGS AIRCRAFT-
ATGS ATGS	Fred Brewster Tom Bagwell	530-260-8841 530-598-0821	AIR/GD Tactical Orleans Complex			AA-06/690HB - Fred Brewster A-93 KNF Forest Aviation Officer Jeff Keiser 1-530-598-1590
HLCO	Shawn Walters	530-339-0016	CMD Primary (CMD 7)		167.0625 166.6125 rx 168.400 tx Tone 136.5	Scott Vly Helibase 530-468-1294/Fax2118 Happy Camp Helibase 530-493-1779
HEB1 HEB1(T)	Bill Lampert office Paul Hart S.V.	530-468-1293 530-260-0201	DECK		163.100	KNF- Dispatch: 530-841-4600 Fortuna - Dispatch: 707-726-1266
Air Ops Trailer ICP		619-359-3344	Air Guard		168.6250 (110.9)tx/rx	OTHER FW AIRCRAFT-

9. HELICOPTERS (Use Additional Sheets as Necessary)

FAA N#	TY	MAKE/ MODEL	BASE	AVAIL	START	REMARKS	FAA N#	TY	MAKE/ MODEL	BASE	AVAL	START	REMARKS
6HT	1	S-64 T	Scott Vly	0830	0800	EXC A-47	8MB	3	A-Star	ICP H1	0830	0800	EXC A-23
25M	1	S-64 T	Scott Vly	0830	0800	EXC A-88							
509	2	B-209	Scott Vly	0830	0800	EXC A-89	2WM	1	Kmax B	Happy Camp	0830	0800	KNF
H-516	2	Bell 212 HP	Scott Vly	0830	0800	EXC A-109	XFT	1	Kmax B	Happy Camp	0830	0800	KNF
H-514	2	Bell 212HP	Scott Vly	0830	0800	EXC A-78	1KA	1	Kmax B	Scott Vly	0830	0800	KNF
H-407	2	Bell UH-1H	Scott Vly	0830	0800	EXC A-110	H-510	2	Bell 205	Scott Vly	0830	0800	Salmon
H-512	2	Bell 212 HP	Scott Vly	0830	0800	EXC A-33	9RH	1	Kmax B	Happy Camp	0830	0800	Eclipse
7AC	3	Bell 407	Scott Vly	0830	0800	CWN A-115	3HX	1	Kmax B	Happy Camp	0830	0800	Eclipse
6TA	3	Bell 407	Scott Vly	0830	0800	EXC A -53	H-503	3	Bell 407	Happy Camp	0830	0800	Eclipse

10. TASK/ MISSION/ ASSIGNMENT (Type/ function includes: Air Tactical, Retardant, Recon, Personnel Transport, Bucket Operations, SAR, etc.)	NAME OF PERSONNEL OR CARGO (if applicable) or instructions for tactical aircraft	MISSION START	FLY FROM	FLY TO
Bucket Support	Bucket support as requested by Operations and/or ATGS	As requested	Scott Vly/Happy Camp	Fire
PAX/Cargo	Helicopter best suited to request	As requested	Orleans ICP Helispot (H-1)	Fire
MEDIVAC	Request thru ICP Communications & MEDL on Command Repeater. Give location, lat/long if known./refer to Medical Plan / IAP	As requested	As directed	As directed
Recon / Mapping	Request thru Operations as needed	As requested	Scott Vly	Fire
Initial Attack Assistance	Support I.A.as requested by Operations/Forests	As requested	Scott Vly/Happy Camp	As directed
	Do not dip within 500 feet of the confluence of all major tributaries of the Klamath River			
	All the above fixed-wing and rotor-wing aircraft are being shared between the Orleans Complex and the KNF Incidents.			
	Refer to and brief Pilots on the No Fly Avoidance Map. Ensure Pilots are aware of the No fly Avoidance Areas prior to flights in the vicinity of the avoidance areas. Note the avoidance area boundary North of ICP is 3 miles North and South and 2 miles West and East of Soges Bar.			
	Adhere to established Bucket/Tank sanitation procedures			

HEALTH AND SAFETY MESSAGE

SAFETY starts with *YOU*

We are ALL accountable for SAFE behaviors

INCIDENT: **Orleans Complex**

DATE: 8/18-19/17 TIME: 0600-0600 Day/Night

Major Hazards and Risks: Steep terrain, Dehydration, Warm temperatures, Driving Hazards, Active Fire Behavior, Hazardous Trees, Bigfoot, Heavy Equipment

Before engaging in any mission always have your “**PACE**” Plan in place and have conversation with your folks:



P- Primary

A- Alternate

C- Contingency

E- Emergency

Watch Out Situation of the Day



3. SAFETY ZONES AND ESCAPE ROUTES
NOT IDENTIFIED

Symptoms & Signs of Heat Illness

Heat Exhaustion: Victim will have cool, clammy skin; pale coloring; feel weak, dizzy and/or nauseous.

Treatment: Have individual sit in shade or cool area; administer fluids; loosen clothing and assure rest.

Heat Stroke: *This is a medical emergency!!* Victim will hot, dry, red skin and possible convulsions. These symptoms can progress to unconsciousness and death!

Treatment – Immediately cool individual's body by pouring water over them, especially the head and upper body. Contact the medical unit. Monitor the victim and provide whatever medical support necessary. Placing ice around the neck, groin and armpits can help speed the cool down.

Incident Safety Officer: Douglas Elliott SOF-2 Kevin Southerland SOF 2 Jim Mackensen SOF2

A handwritten signature in black ink, appearing to read "Douglas Elliott".

A handwritten signature in black ink, appearing to read "Kevin Southerland".

A handwritten signature in black ink, appearing to read "Jim Mackensen".

This Page Is Intentionally Left Blank

INCIDENT SAFETY ANALYSIS 215a

Orleans Complex CA-SRF-000741 - Friday, August 18, 2017

8. Location	9. Hazard	6. Control or Abatement Action (Engineering, Administrative, PPE, Avoidance, Education, etc)
Divisions U, W, Z, Creek Group, & West Group	Chain Saw Operations	<ul style="list-style-type: none"> ~ Follow "Hazard Tree Safety" guidelines, IRPG page 22 ~ Look up, Look down, Look around for hazard tree indicators. ~ Only fell and buck trees within your expertise, and training. ~ Follow "Procedural Felling Operations" on page 79 in IRPG. ~ Do not fall trees during high wind events. ~ Ensure proper use of all required PPE.
All Divisions	Hazard Trees	<ul style="list-style-type: none"> ~ Follow "Hazard Tree Safety" guidelines, IRPG page 22. ~ Post lookouts, or use a spotter in mop-up areas with personnel. ~ Don't park vehicles or take breaks in high concentrations of hazard trees. ~ Establish trigger points for disengagement during high wind events. ~ Remember that the hazard zone extends a minimum of 2 1/2 tree heights.
All Divisions	Driving & Traffic	<ul style="list-style-type: none"> ~ Practice "Defensive Driving" techniques traveling on all roads and city streets. ~ Use spotters when backing. ~ Honk horn to alert personnel when backing. ~ Keep clutter off dash and inside cab. ~ Follow Driving LCES (Lights, Chock blocks, Emergency brake, Seat belts). ~ Always use headlights. ~ Yield to pedestrians and bicycles. ~ Observe posted speed limits. ~ Use the 3 second rule for following distance when driving. ~ Use chock blocks, turn wheels into hill. ~ Avoid distractions (eating, cell phones, radio). ~ Ensure that windshields are kept clean of dust and bugs.
All Divisions	Heat Related Illness (HRI)& Dehydration	<ul style="list-style-type: none"> ~ Drink Fluids throughout operational period (6-8 qts/shift). ~ Maintain water/electrolyte ratio of 3 to 1. ~ Carry extra water on line and cache water at drop points. ~ Take Frequent breaks, minimum of 10 minutes every hour. ~ Allow out of area resources time to acclimatize before expecting peak performance. ~ Recognize symptoms of HEAT RELATED ILLNESS which include. <ul style="list-style-type: none"> o Lack of energy o Headaches, dizziness o Lack of rest o No hunger, poor eating habits o Hot skin, and lack of sweating
Division U & W	Heavy Equipment Operations	<ul style="list-style-type: none"> ~ Ensure communications are established with operators. ~ Use hand signals if other communications are unavailable. ~ Maintain a 50'-100' exclusion area around equipment and increase it to 1 1/2 times tree height when in timber. ~ Use a spotter when backing. ~ Avoid working below heavy equipment.
Divisions M, U, W, Z, Creek Group, & West Group	Helicopter Operations	<ul style="list-style-type: none"> ~ Stay clear of all bucket drops when suppression actions are in place and allow 1 minute prior to re-entry. ~ Monitor A-G communications. ~ Follow aviation safety guidelines in IRPG and IHOG.
Divisions U, W, Z, Creek Group, & West Group	Indirect Fireline	<ul style="list-style-type: none"> ~ Post lookouts, identify escape routes and safety zones (IRPG pg. 6). ~ Review "Strategy/Indirect Attack" (IRPG pg. 87).
All Divisions	Steep Terrain & Rolling Debris	<ul style="list-style-type: none"> ~ Maintain 8'-10' spacing when working & walking. ~ Don't work above any personnel. ~ Be on the lookout for rolling rocks, debris, or burning material. ~ Evaluate necessity to send personnel in areas with limited access. ~ Post lookouts (IRPG pg 6).
All Divisions	Critical Fire Behavior	<ul style="list-style-type: none"> ~ Share weather observations with all personnel assigned to division. ~ Establish "Trigger Points" to withdraw. ~ Use "Risk Management" process prior to engaging in suppression actions, refer to page 1, IRPG.

INCIDENT SAFETY ANALYSIS 215a

All Divisions	Air Operations	<ul style="list-style-type: none"> ~ Follow "Aviation Watch-Out Situations" on page 44, IRPG. ~ Don't plan on air resources for medical transport or resupply. ~ Refer to page 57, IRPG for directing bucket drops. ~ Ensure positive communication with all air resources.
All Divisions	Communications	<ul style="list-style-type: none"> ~ Maintain communication with aviation resources, and suppression organization. ~ Ensure all know frequency and protocol for contacting resources. ~ Utilize the ICS 205. ~ Utilize human repeaters when working in dead spots.
All Divisions	Fireline Hazards	<ul style="list-style-type: none"> ~ Do not work directly above or below personnel during firing and mop-up operations. ~ Watch for falling and rolling debris on steep slopes. ~ Alert crew personnel of rolling debris by yelling to affected individuals. ~ Position debris that could roll vertically on slope. ~ Avoid stepping over debris that could roll by walking around object. ~ Avoid radiant heat by wearing appropriate PPE correctly. ~ Use correct tool for task assigned. ~ Follow power line safety protocol as outlined on page 22 in IRPG. ~ Flag and isolate all HAZMAT and alert all personnel working in Division. ~ Follow WUI recommendations on pages 10-11 in IRPG.
All Divisions	Medical Extraction (ground > 2 hours)	<ul style="list-style-type: none"> ~ Ensure adequate extraction points/helispots are approved, identified, and reassessed as needed. ~ Position REMS and ALS resources strategically based on operations and accessibility. ~ Utilize EMT(P)'s on Division for initial care. ~ Follow medical protocol as outlined in ICS-206 & IRPG Pgs 99-108. ~ Consider aviation resources early for extraction & transport when prudent.
Divisions A, U, W, Z, Creek Group, & West Group	Firing Operations & Devices	<ul style="list-style-type: none"> ~ Only personnel trained in the use of each device will be authorized to use firing equipment. ~ Ensure all personnel are aware of firing operation that may affect them. ~ Wear appropriate PPE. ~ Ensure aerial/ground ignition plans have been adequately developed and personnel are briefed.
All Divisions	Wildlife & Livestock	<ul style="list-style-type: none"> ~ Watch out for mountain lions, bears & Bigfoot inside fire area and along roadways. ~ Clean up all debris and trash during each operational period.
All Divisions	ATV/UTV use	<ul style="list-style-type: none"> ~ Ensure equipment is inspected and safe to use. ~ Restrict UTV's to max width of 50" on ATV trails due to width and severe out sloped conditions. ~ Ensure operator is trained and certified to operate. ~ Ensure operator has proper PPE according to the Redbook and/or RMA. ~ Question if it is mission critical.
All Divisions	Poisonous Plants	<ul style="list-style-type: none"> ~ Identify and Avoid hazard areas. ~ Launder clothing. ~ Shower frequently.

INCIDENT RADIO COMMUNICATIONS PLAN		Incident Name		ORLEANS COMPLEX		Date/Time Prepared		Operational Period Date/Time		
						8/17/17 1900		08/18 - 8/19 Day 0600-1800 Night 1800-0600		
CONTROLLED UNCLASSIFIED INFORMATION//BASIC										
CH	Function	Channel Name/Trunked Talkgroup	Assignment	RX Freq	RX Tone/NAC	TX Freq	Tx Tone/NAC	Dev Pwr	Mode A, D, M	Remarks
1	TACTICAL	TAC 1	DIVISION A/F/M	168.0500	Tone 4 136.5	168.0500	Tone 4 136.5	N L	A	NIGHT TAC ALL DIVISIONS
2	TACTICAL	TAC 2	STRUCTURE GROUP & DIVISION U	168.2000	Tone 4 136.5	168.2000	Tone 4 136.5	N L	A	
3	TACTICAL	TAC 3	CREEK GROUP	168.6000	Tone 4 136.5	168.6000	Tone 4 136.5	N L	A	
4	TACTICAL	TAC 5	DIVISION W	166.7250	Tone 4 136.5	166.7250	Tone 4 136.5	N L	A	
5	TACTICAL	TAC 6	WEST GROUP	166.7750	Tone 4 136.5	166.7750	Tone 4 136.5	N L	A	
6	TACTICAL	TAC 7	DIVISION Z	168.2500	Tone 4 136.5	168.2500	Tone 4 136.5	N L	A	
7	COMMAND	CMD 7	EAST ZONE	166.6125	Tone 4 136.5	168.4000	Tone 4 136.5	N L	A	UKONOM MOUTAIN LINKED TO CMD 8 & CMD 9
8	COMMAND	CMD 8	WEST ZONE	170.6875	Tone 4 136.5	166.5750	Tone 4 136.5	N L	A	ROCK CREEK BUTTE LINKED TO CMD 7 & CMD 9
9	COMMAND	CMD 9	EAST ZONE	173.0625	Tone 4 136.5	166.1250	Tone 4 136.5	N L	A	ORLEANS MOUTAIN LINKED TO CMD 7 & CMD 8
10	FOREST OPS	SRF UKNO	SRF FOREST NET	172.3750	NONE	164.1750	Tone 7 167.9	N H	A	SRF FOREST NET UKONOM
11	FOREST OPS	SRF ORLE	SRF ADMIN NET	170.4750	NONE	165.7500	Tone 5 146.2	N H	A	SRF ADMIN NET ORLEANS
12	FOREST OPS	KNF UKNO	KNF FOREST NET	171.5250	Tone 7 167.9	165.4125	Tone 4 136.5	N H	A	KNF FOREST NET UKONOM
13	Air-to-Ground	A/G CMD	OPS & DIVISIONS	169.2000	NONE	169.2000	NONE	N L	A	
14	Air-to-Ground	A/G TAC	ALL DIVISIONS	167.0625	NONE	167.0625	NONE	N L	A	
15	TACTICAL	CALCORD	MEDICAL TAC	156.0750	Tone 6 156.7	156.0750	Tone 6 156.7	N H	A	
16/20	EMERGENCY	AIR GUARD	EMERGENCY	168.6250	NONE	168.6250	Tone 1 110.9	N L	A	

Prepared By (Communications Unit Leader)

Mike Horst, COM1 (661) 645-4254



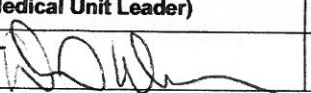
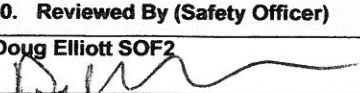
Incident Location: KLAMATH AND SIX RIVERS NF
 Cnty: HUMBOLT Latitude Longitude W

CONTROLLED UNCLASSIFIED INFORMATION//BASIC

NOTE: TO HELP ELIMINATE ADJACENT FIRE INTERFERENCE, SET YOUR SQUELCH AT THE 9 O'CLOCK POSITION. IF YOU ARE STILL HEARING RADIO TRAFFIC FROM ANOTHER FIRE, TURN THE SQUELCH KNOB FULLY COUNTER CLOCK-WISE.

This Page Is Intentionally Left Blank

MEDICAL PLAN (ICS 206 WF)

1. Incident/Project Name				2. Operational Period					
Orleans Complex				Date/Time 8/18-19/2017 Day 0600-1800 Night 1800-0600					
3. Ambulance Services									
Name	Location			Phone & EMS Frequency		Advanced Life Support (ALS) Yes No			
Mountain Medics 1	Ti-Bar Fire Station - Day, ICP - Night			Contact on Command		X			
Mountain Medics 2	DP210 – Day, ICP- Night			Contact on Command		X			
Hoopa 83	DP110 – Day, ICP- Night			Contact on Command		X			
4. Air Ambulance Services (COORDINATE with AIR AMBULANCES on CALCORD tone 6)									
Name	ETA	Phone			Type of Aircraft & Capability				
Kern H-407(ALS)	20 min	657-464-7830 (Direct)			Hoist Rescue – Scott Valley, CA Day/Night				
Lifenet 34(ALS)	36 min	707-726-1266 (FICC)			Air Ambulance – Montague, CA Day/Night				
Reach/PHI(ALS)	50 min	707-726-1266 (FICC)			Air Ambulance- Redding, CA Day/Night				
Cal-Fire H-102(BLS)	15 min	707-726-1266 (FICC)			Hoist Rescue– Kneeland, CA Day				
Coast Guard(BLS)	1 hr 15 min	707-726-1266 (FICC)			Hoist Rescue – Eureka, CA Day/Night				
5. Hospitals									
Name & Level	GPS Datum – WGS 84 Degrees Decimal Minutes			Travel Time Air Gnd		Helipad Yes No		Address	
St. Joseph Hospital	Lat:	N40°47.02		30 min	2 hrs	X		2700 Dolbeer, Eureka, CA	
	Long:	W124°08.48							
	VHF:								
Mad River Hospital	Lat:	N40°53.43		25 min	2 hrs	X		3800 Janes Rd. Arcata, CA	
	Long:	W124°05.27							
	VHF:								
Mercy Medical Center Level II Trauma Center	Lat:	N40°34.33		50 min	3 hrs	X		2175 Rosaline Ave, Redding, CA	
	Long:	W122°23.80							
	VHF:								
UC Davis Level I Trauma/Burn Center	Lat:	N38°33.17		1.5 hrs	6 hrs	X		2315 Stockton Blvd. Sacramento, CA	
	Long:	W121°27.21							
	VHF:								
6. Division / Crew Pre-plan. Update and discuss with assigned resources daily									
Crew EMTs & Equipment				East Zone H1- Lat:41°18.559N Long:123°33.183W					
Fireline EMTs & Location Adv. Life Support?				H3- Lat:41°31.740N Long:123°31.620W					
				H4- Lat:41°32.508N Long:123°25.792W					
Air Hoist site: Lat: / Long:				H5- Lat:41°34.037N Long:123°28.548W					
				H7- Lat:41°37.192N Long:123°28.374W					
				H9- Lat:41°31.640N Long:123°24.445W					
Helispot: Lat: / Long:				H10-Lat:41°38.780N Long:123°24.419W					
				H12-Lat:41°25.707N Long:123°22.583W					
Alternate/No-fly plan:				West Zone H100- Lat:41°28.41N Long:123°47.37W					
				H101- Lat:41°29.33N Long:123°39.00W					
				H102- Lat:41°28.41N Long:123°44.23W					
Medical Unit– ICP Orleans N41°18.518 W123°31.511				Point of Contact:		MEDL-Rob Herman, Dave Sween, Steve McGary 530-359-2442			
				EMS Responders & Capability:		Mountain Medical – Advanced Life Support			
				Equipment Available on Site:		Medical supplies			
				Ambulance ETA:		Air – 55 min. Ground – 35 min.			
8. Prepared By (Medical Unit Leader)				9. Date/Time		10. Reviewed By (Safety Officer)		11. Date/Time	
David Sween MEDL 				8/17/2017 2000		Doug Elliott SOF2 		8/17/2017 2000	

MEDICAL PLAN (ICS 206 WF)

Medical Incident Report

Use items one through nine to communicate situation to communications/dispatch.

1. CONTACT COMMUNICATIONS DECLARE: "MEDICAL EMERGENCY" OR "NON-EMERGENCY MEDICAL TRANSPORT"

Ex: "Communications, Div. Alpha. Stand-by for a medical emergency on Div. Alpha" (If life threatening request designated frequency be cleared for emergency traffic.)

2. INCIDENT STATUS: *Provide incident summary and command structure.*

- **Nature of Injury/Illness** *Describe the injury (Ex: Broken leg with bleeding)* _____
- **Incident Name** *Geographic Name + "Medical" (Ex: Trout Meadow Medical)* _____
- **Incident Commander (Division Sup. or designee)** *Name of IC* _____
- **Patient Care** *Name of Care Provider (Ex: EMT Smith)* _____

3. INITIAL PATIENT ASSESSMENT: *Complete this section for each pt. This is only a brief, initial assessment. Provide additional pt. info after completing this report.*

- **Number of Patients:** _____ - **Male / Female:** _____ - **Age:** _____ - **Weight:** _____
- **Conscious?** YES NO = MEDEVAC! - **Breathing?** YES NO = MEDEVAC!
- **Mechanism of Injury** *What caused the injury?* _____
- **Location, Lat/Long** (Datum WGS84) *Ex: N 40° 42.45' x W 123° 03.24'* _____

4. SEVERITY OF EMERGENCY, TRANSPORT PRIORITY

SEVERITY	TRANSPORT PRIORITY
<input type="checkbox"/> URGENT-RED <i>Life threatening injury or illness.</i> <i>Ex: Unconscious, difficulty breathing, bleeding severely, 2° – 3° burns more than 4 palm sizes, heat stroke, disoriented.</i>	Ambulance or MEDEVAC helicopter. Evacuation need is IMMEDIATE.
<input type="checkbox"/> PRIORITY-YELLOW <i>Serious injury or illness.</i> <i>Ex: Significant trauma, not able to walk, 2° – 3° burns not more than 1-2 palm sizes.</i>	Ambulance or consider air transport if at remote location. Evacuation may be DELAYED.
<input type="checkbox"/> ROUTINE-GREEN <i>Not a life threatening injury or illness. Ex: Sprains, strains, minor heat-related illness.</i>	Non-Emergency. Evacuation considered Route of Convenience.

5. TRANSPORT PLAN:

Air Transport: (Agency Aircraft Preferred)

- Helispot Short-haul/Hoist Life Flight Other

Ground Transport:

- Self-Extract Carry-Out Ambulance Other

6. ADDITIONAL RESOURCE/EQUIPMENT NEEDS:

- Paramedic/EMT(s) SKED/Backboard/C-Collar Crew(s) Burn Supplies Oxygen
 Trauma Bag Medication(s) IV/Fluid(s) Cardiac Monitor/AED
 Other (i.e. splints, rope rescue, wheeled litter)

7. COMMUNICATIONS:

- Run Medical Emergency on Command - **Coordinate with air ambulance on CALCORD tone 6**

8. EVACUATION LOCATION:

- **Lat/Long** (Datum WGS84) *EX: N 40 42.45' x W 123 03.24'* _____
- **Patient's ETA to Evacuation Location:** _____
- **Helispot/Extraction Size and Hazards:** _____

9. CONTINGENCY: *If primary options fail, what actions can be implemented in conjunction with primary evacuation method? Be thinking ahead...*

REMEMBER: -Confirm ETA's of resources ordered -Act according to your level of training
 - If air or ground ambulance is DELAYED: Package and transport patient to rendezvous with incoming Ambulance.
 Re-route EMS helicopter to rendezvous point as appropriate.



GOOD MORNING. COULD YOU READ THE HEADLINE THIS MORNING? IT SAYS "HUMAN RESOURCES MESSAGE", BUT THIS TIME IT WAS WRITTEN IN WING-DINGS.

COMMUNICATION IS ESSENTIAL ON A FIRE, AND ALSO BASICALLY IN LIFE. UNFORTUNATELY, SOMETIMES THE WORDS THAT COME OUT OF OUR MOUTHS END UP SOUNDING LIKE WING-DINGS TO THE PERSON WE ARE SPEAKING TO. YOU DON'T MEAN FOR THAT TO HAPPEN, BUT IT DOES.

GOOD COMMUNICATION SKILLS REQUIRE TWO THINGS — LISTENING AND SPEAKING. WE HAVE 2 EARS AND 1 MOUTH FOR A REASON — TO LISTEN TWICE AS MUCH AS WE SPEAK. AND IF YOU NOTICE, OUR EARS ALWAYS STAY OPEN, WHILE OUR MOUTHS HAVE A HINGE SO IT CAN BE CLOSED. TAKE THE TIME TO LISTEN AND TRULY COMMUNICATE WITH ONE ANOTHER.



HUMAN RESOURCE SPECIALISTS:
KAREN HARTMAN AND LINDA OVERTON (T)
619-363-8212



CODE OF CONDUCT INCIDENT PERSONNEL

Each individual on this incident is responsible for:

- Being *ready and able* to perform their assigned duties effectively
- Conducting themselves in a manner that treats people with dignity, equity, courtesy, and respect
- Abiding by agency ethics and conduct regulations
- Reporting any harassment or other inappropriate behavior

Each individual on this incident has the right to:

- Work in an environment characterized by safe work practices
- Work in a fair and harassment free environment
- Say "No" to unwelcome advances or requests for favors
- File complaints or grievances through appropriate avenues

There is zero tolerance for inappropriate behavior while assigned to the incident, including

- Illegal drug use
- Alcohol use
- Unsafe work practices and activities
- Discrimination
- Sexual harassment
- Fighting, threatening and abusive behaviors
- Using social media and electronic communication devices for personal business while engaged in fire assignment duties
- Other violations of USDA and Forest Service standards of conduct

Failure to adhere to the Code of Conduct could result in dismissal from the incident, with notification to your home unit.

The public expects our best efforts; they see us as professionals in what we say and do. Let's continue to show them we are!

Revised 7/14

Orleans Complex Training Program

Attention All Trainees & Trainers:

In order to facilitate a quick and efficient training experience, please look ahead and prepare your training paperwork prior to your check-in with the Training Specialist. This will include the following:

- ✘ Having a valid Red Card showing your ICS trainee position
- ✘ Your Task Book:
 - ✓ Must be properly initiated by your Training Chief or their designee
 - ✓ Must be current within the allowable timeframe and not expired
- ✘ A completed Incident Trainee – Trainer Data Form (found on the following page)

To close-out with the Training Specialist, please bring the following:

- ✘ A completed ICS 225 or 226 with a legible and thorough description of tasks, duties, challenges, and successes performed by the trainee
- ✘ Your Task Book with:
 - ✓ Completed tasks marked by your trainer with initials and dates for each
 - ✓ Completed Evaluation Record matching the marked tasks

The training office has additional ICS 225's or job specific ICS 226's and Task Book Evaluation Records if needed.

Thank you,

Scott Tenery – Training Specialist



Incident Trainee / Trainer Data Form

Trainee Data

Trainee Name: _____ ICS Trainee Position: _____

Resource Order # (A, C, E, or O): _____ Agency Designator (Ex. CA-CNF): _____

Home Unit: _____

Ordered as Trainee? Y N Priority Trainee Local Forest Trainee IMT Trainee

Date Assigned: _____ Contact phone # while on incident: _____

Training Records Mailed to (Ex. Fire Chief, Training Officer):

Name: _____ Title: _____

Name of Agency/Unit: _____

Agency / Unit Address: _____

City: _____ State: _____ Zip Code: _____

Phone: _____ Email: _____

Trainee Prerequisites

1. Possesses valid Qualification Card or agency certification card? _____ Yes _____ No

2. Trainee has current position task book issued by home unit? _____ Yes _____ No

Trainer / Evaluator Data

Trainer Name: _____ ICS Position: _____

Home Unit: _____ Resource Order # (A,C,E, or O): _____

Agency / Unit Address: _____

City: _____ State: _____ Zip Code: _____

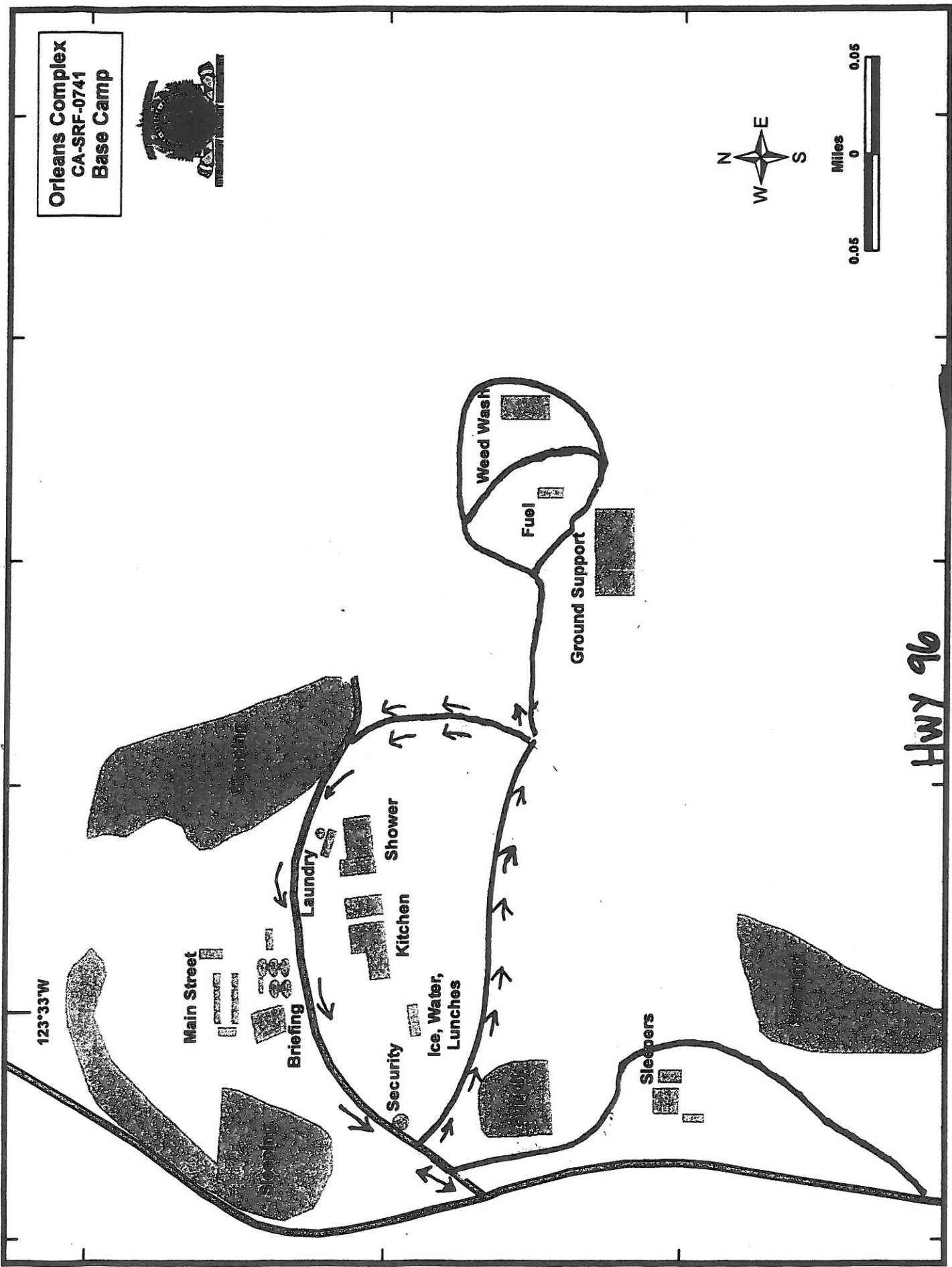
Contact phone # while on incident: _____

Orleans Complex
CA-SRF-0741
Base Camp




123°33'W

HWY 96



This Page Is Intentionally Left Blank

Date & Time Order was placed:		Order #	Location & Time for Delivery (DIV, LZ, DP, Lat Long)		Mode of delivery		
		(DIVS+#)			(Driven/Helo/DIVS to Pick Up)		
			Lat:				
			Long:				
Order received in Communications by (Name)					Time:		
Order shipped to line by (Name): (Send this sheet to the line with in order)					Time:		
#	Item						
1	1,000 ft Hose Lay includes the following: Amount _____						
	10 ea, 100' x 1 1/2" Rolled Hose; 10 ea 100' x 1" Rolls of Hose; 10 ea 1 1/2" Gated Wyes; 10 ea 1 1/2" to 1" reducers; 10 ea 1" nozzels						
2	2,000 ft Hose Lay includes the following: Amount _____						
	20 ea, 100' x 1 1/2" Rolled Hose; 20 ea 100' x 1" Rolls of Hose; 20 ea 1 1/2" Gated Wyes; 20 ea 1 1/2" to 1" reducers; 20 ea 1" nozzels						
3	3000 ft Hose Lay includes the following: Amount _____						
	30 ea, 100' x 1 1/2" Rolled Hose; 30 ea 100' x 1" Rolls of Hose; 30 ea 1 1/2" Gated Wyes; 30 ea 1 1/2" to 1" reducers; 30 ea 1" nozzels						
#	NFES	Item	Amount	#	NFES	Item	Amount
4	001016	HOSE - GARDEN, 3/4" X 50'		30	000606	CAN - GASOLINE, 5GAL,	
5	000932	HOSE - 1" X 100'		31	000341	OIL - 2 CYCLE, QT	
6	000933	HOSE - 1 1/2" X 100'		32	003444	OIL - 2 CYCLE, 1 GAL	
7	000136	NOZZLE - GARDEN HOSE, 3/4"		33	001880	OIL - BAR & CHAIN, 1 GAL	
8	000024	NOZZLE - TWIN TIP, COMBINATION, 1"		34	N/A	Chainsaw, Fuel. Mix Ratio?	
9	001081	NOZZLE - KK, 1"		35	000241	TORCH - DRIP	
10	001082	NOZZLE - KK 1 1/2"		36	N/A	TORCH - DRIP, Fuel	
11	000904	VALVE - WYE, GATED, 3/4"		37	000372	CARTRIDGE - #6 PURPLE,	
12	000259	VALVE - WYE, GATED, 1"		38	000105	FUSEE -	
13	000231	VALVE - WYE, GATED, 1 1/2"		39	000371	FLARE - FIRE, 3/4" X 3 1/2"	
14	000738	VALVE - SHUT OFF, 3/4"		40	000030	BATTERY - SIZE AA,	
15	001809	TEE - 1" X 1" X 3/4"		41	000021	BAG - GARBAGE 39" X 33"	
16	002240	TEE - 1" X 1" X 1"		42	000048	CONTAINER - 5 GAL Cubbie	
17	000230	TEE - 1 1/2" X 1 1/2" X 1"		43	001842	FOOD - MRE'S	
18	000733	REDUCER - 1" TO 3/4"		44	000143	SHEETING - CLEAR, 16' X 100'	
19	000010	REDUCER - 1 1/2" TO 1"		45	000712	TOWEL - WATERLESS, 12" X 30"	
20	002235	INCREASER - 3/4" TO 1"		46	001038	TOWEL - BATH, 24" X 36"	
21	000416	INCREASER - 1" TO 1 1/2"		47	000881	WRAP - STRUCTURE 54" X 300'	
22	001145	FOAM - CLASS A, 5 GAL		48	001048	KIT - SPRINKLER	
23	001149	PUMP - BACKPACK		49	000870	KIT - PUMP, MRK3	
24	N/A	Pumpkin (Gallons?)		50	000340	KIT - CHAIN SAW	
25	N/A	Porta-Tank (Gallons?)		51	000772	KIT - MOP-UP	
26	000171	TOOL - SHOVEL		52	008606	KIT, PUMP -LIGHTWEIGHT, 4 CYCLE	
27	000146	TOOL - PULASKI		53	N/A	Water, Bottled, Cases	
28	001180	TOOL - COMBI		54	N/A	Gatorade	
29	000296	TOOL - MC LEOD					
Notes:					Notes:		

LINE SPIKE KITS
Type 1 Spike Kit (Per Crew / 24 hr period)
80 - gallons of Water (1 case = 4 gal)
8 - Cases of Gatorade
6 - Cases of MRE's
40 - Sack Lunches
10 - gallons of Gasoline (safety can-NOT mixed, tagged)
40oz - 50:1 2 cycle mix
1 - Yellow tag "MIX"
4 - gallons Bar and Chain oil
1 - Bathroom in a Box (5 rolls of TP, 2 Gold Bond, 25 bath in a bag)
1 - Box of Trash bags
2 - Case / "Brick" AA Batteries
2 - Rolls fiber tape
1 - Roll of Visqueen
22 - Sleeping Bags (consider for cold weather)
Burning Supplies / Equipment ??

Type 2 Spike Kit (Per Crew / 24 hr period)
(> 1 Night - MAX 3 Nights)
Type 1 kit from above <i>and</i> the following...
20 - Pair of work gloves
Basic Medical supplies (Line medic / EMT)
Crew Red Bags (projected for 3 nights)
22 - Sleeping Pads

How to order - If you have 3 crews "spiking out" for 1 night then order 3 Type 1 Spike Kits to be delivered to the DP / Sling site by 1600 hrs. ****Add Firing Equipment as needed****

HOSE KITS
FULL Hose Kit
1 ½" Hose (5000 ft)
1" Hose (2000 ft)
¾" Hose (2000 ft)
1 ½" gated wyes (25 each)
1 ½" to 1" reducers (25 each)
1" to ¾" reducers (25 each)
1" combination nozzles (25 each)
¾" nozzles (25 each)
½" combination nozzles (5 each)
¾" wyes (25 each)
Hose clamps (10 each)
Class A foam (25 gallons)
HALF Hose Kit
1 ½" Hose (2500 ft)
1" Hose (1000 ft)
¾" Hose (1000 ft)
1 ½" gated wyes (12 each)
1 ½" to 1" reducers (12 each)
1" to ¾" reducers (12 each)
1" combination nozzles (12 each)
¾" nozzles (12 each)
Hose clamps (5 each)
Class A foam (10 gals)
1 ½" combination nozzles (2 each)
¾" wyes (12 each)



