

RUTH COMPLEX



CA-SRF-000897

P5K89J

August 12 – 13, 2017

Night Shift 1800 - 0600



Incident Objectives	1. Incident Name	2. Date Prepared	3. Time Prepared
	Ruth Complex	8/12/2017	1430
4. Operational Period (Date and Time)			
8/12 - 13/2017		1800 - 0600	Night Shift
5. General Control Objectives for the Incident (include Alternatives)			
1. Lookout for firefighter safety.			
2. Protect life and property.			
3. Actively suppress all current fires to keep as small as possible.			
4. Aggressively attack new fires.			
6. Weather Forecast for Operational Period			
See attached weather forecast.			
7. General Safety Message			
Maintain LCES at all times.			
Stay Hydrated.			
Watchout for fire weakened trees.			
Ensure everyone gets briefed on current IAP.			
8. Attachments (check if attached)			
<input checked="" type="checkbox"/> Organization List (ICS 203)		<input checked="" type="checkbox"/> Medical Plan (ICS 206)	<input checked="" type="checkbox"/> Safety Message
<input checked="" type="checkbox"/> Assignment List (ICS 204)		<input checked="" type="checkbox"/> Incident Map	<input type="checkbox"/> Telephone List
<input checked="" type="checkbox"/> Communications Plan (ICS 205)		<input type="checkbox"/> Traffic Plan	<input type="checkbox"/>
ICS-202	9. Prepared by (PSC) Jason Schillinger/ PSC1 	10. Approved by (IC) Mike Minton 	

ORGANIZATION ASSIGNMENT LIST			9. Operations Section	
1. Incident Name	Ruth Complex		Chief	Steve Burns
2. Date	8/12/2017	3. Time	1400	Deputy
				Jay Lusher
4. Operational Period	8/12 - 8/13 (NIGHT)	1800-0600		Dutchman
5. Incident Commander and Staff			Division Supervisor	Shannon Prather
Incident Commander	Mike Minton			
Deputy	Carlton Joseph			
Safety Officer	Brian Savage			
Information Officer	Erin McKenzie		Secret	
Information Officer			Division Supervisor	Unstaffed
Liaison Officer	Rick Alpert, Fred Flores			
6. Agency Representative			Willie	
Agency	Name		Division Supervisor	Ron McLaughlin
SRF	Dan Dill			
Cal Fire HUU	Lucas Titus		Spout	
			Division Supervisor	Unstaffed
			Air Operations	
			Operations Branch Director	John Keesee
			Air Support Group Supervisor	Craig Dado
			10. Finance Section	
7. Planning Section			Chief	Theresa Fork
Chief	Jason Schillinger		Deputy	
Deputy			Time Unit	James Brown
Resource Unit	Eric Matye Jackie Switzler Allan Kaipakoff		Comp/Claims Unit	Elaine Downing
Situation Unit	Tad Morelock		Procurement Unit	Katie Pasini
CTSP	Jim Youngblood		Cost Unit	Roger Siemers
SCKN			Equipment Time Recorder	Debra Cesmat
GISS	John Mosley			
Ltan	Jeff Shelton			
Read	Doreen Hrivnack			
Read	Krista Smith			
Demobilization Unit	William Corey			
Technical Specialists				
Human Resources				
Training				
8. Logistics Section				
Chief	Ken Kumpe			
Deputy	James Eckroth, Bret Shurr (t)			
Supply Unit	Michael Bradford			
Facilities Unit	Jane Artega			
Ground Support Unit	John Badaracco, Fred Simonds			
Food Unit	Dennis Durhan		Prepared by (Resource Unit Leader)	
Medical Unit	Robert Russell, Newt Ong		Jackie Switzler	
ORDM	Kate Morris			
RCDM				
Communications	James Lewis, Shirley Dillon			



Ruth Complex Weather Forecast

FORECAST NO: 1

NAME OF FIRE: Ruth Complex

PREDICTION FOR: 1800 Sat - 0600 Sun

UNIT: CA-SRF

SHIFT DATE: 8/12-8/13

SIGNED: *Matt Mehle*

TIME AND DATE

Incident Meteorologist- Matt Mehle

FORECAST ISSUED: 1600 8/12/17

WEATHER DISCUSSION: A passing upper level trough will bring some breezy to gusty winds over the higher elevations of the Ruth Complex. Humidities will recover to moderate for most locations Saturday night. Conditions on Sunday will be similar to Saturday, mild to locally dry.

WEATHER FORECAST FOR SATURDAY NIGHT:

WEATHER: Mostly clear with smoke settling into valleys.

TEMPERATURES: Min 50-58-F. Valley bottoms into the upper 40s. **24 HR Trend:** Little Change

HUMIDITY: Max Valley bottom...70-80%; Ridges...50-60%. **24 HR Trend:** Little Change

20-FOOT WIND:

SLOPE/VALLEY - Upslope 2-5 with gusts to 7 mph in the evening...becoming downcanyon/downslope to less than 4 mph after 2200.

RIDGETOP - Northwest winds 5 to 8 mph with gusts up to 15 mph in the evening...becoming north 4 to 6 mph.

INVERSIONS/STABILITY: Canyon inversions becoming establishing 2100-2200.

WEATHER FORECAST FOR SUNDAY:

WEATHER: Mostly sunny. Areas of smoke through the day.

TEMPERATURES: Max Lower Elevations....84-93F; ridges....80-85F. **24 HR Trend** Little Change

HUMIDITY: Min Lower Elevation....10-20%; ridges....20-30%. **24 HR Trend** (up to 5% drier)

SLOPE/VALLEY - Variable less than 3 mph in the morning becoming Upcanyon / Upslope 3 to 5 mph with gusts to 8 mph .

RIDGETOP- Variable less than 5 mph the morning becoming. Southwest 4 to 7 mph in the afternoon. Gusts 12 mph in the afternoon.

INVERSIONS/STABILITY: Any smoke lifting in the afternoon

EXTENDED FORECAST:

Monday... Mostly sunny with areas of smoke. Max temps...upper 70s to 80s. Min temps 50s. Min RH 20-35%. North to northwest winds 5 to 15 mph. Strongest over ridges and upper slopes.

REALTIME RAWS INFO for RUTH COMPLEX

SUNSET: 8:14 PM **SUNRISE:** 6:23 AM



FIRE BEHAVIOR FORECAST

FORECAST NUMBER: 001	TYPE OF FIRE: Wildfire
FIRE NAME: Ruth Complex	OPERATIONAL PERIOD: 08/12/17 1800-0600
DATE ISSUED: August 12, 2017	TIME ISSUED: 16:00
UNIT: CA-SRF-000897	SIGNED: <i>Jeff Shelton</i> Typed/printed: Jeff Shelton (LTAN)

INPUTS

WEATHER SUMMARY: **** Typical Diurnal ****

A broad trough will pass over the region this weekend which may lead to some gusty winds on the ridges and exposed areas. RH recoveries will be good in the valleys, but poor on the ridges for the next several days. Tuesday, high pressure starts to build into the area and this will bring warming and drying conditions to the area.

Min. Temperatures- 50-60 degrees **Max. Humidity-** 60 to 80% **Winds-** NW 5 to 8 mph/Gusts to 15 mph

OUTPUTS

FIRE BEHAVIOR

GENERAL:

- Expect fuels within the ENTIRE burn area to carry fire until well after sunset.
- The fire is predominantly fuels driven, but amplified by steep topography.
- Persistently low relative humidity will support spotting early in the shift and diminish later.
- Very dry large fuels (<5%-1000 hr.) will retain heat and fire until fully consumed .
- Steep terrain will foster rollout as heavy fuels are weakened by deep seated fire.

SPECIFIC:

All Divisions: Anticipate a typical diurnal wind shift around midnight....

Flame Lengths- 3 to 6 ft. in Grass, Up to 17 ft. in Brush...Diminishing overnight.

Rate of Spread- 20 chains/hour in Grass, Up to 40 chains/hour in Brush....Diminishing overnight.

Spotting Distances- Early; Up to .25 miles in Grass/Brush, Up to .4 miles in Timber (Torching)

Probability of Ignition- Over 90% at the peak of the burn period, Diminishing to <40% overnight

AIR OPERATIONS:

Expect increasingly poor smoke dispersion during the evening hours with the inversion setting up by 23:00. Mixing heights will lower to ground level overnight. Anticipate terrain induced turbulence in areas with complex terrain; especially early in the shift near west facing slopes.

SAFETY

Identify Trigger Points Early in the Shift.....and Respect Them!

Expect Areas Where Wind and Terrain Align to Produce *Surprisingly* Rapid Rates of Spread!

DIVISION ASSIGNMENT LIST				1. Branch		2. Division/Group Night / Dutchman	
3. Incident Name Ruth Complex				4. Operational Period Date: 8/12 - 13/2017 Time: 1800 - 0600			
5. Operations Personnel							
Operations Chief		Shannon Prather		Division/Group Supervisor		Ron McLaughlin	
Branch Director				Air Attack Supervisor No.			
6. Resources Assigned this Period							
Strike Team/Task Force/Resource	Leader	Number Persons	Trans. Needed	Drop Off PT./Time	Pick Up PT./Time		
S/T 3615				1800	0600		
Pinon Pine E-513				1800	0600		
White Mtn E-911				1800	0600		
Zable Dozer 24hr.				1800	0600		
Dozer 4 24hr.				1800	0600		
Zable Dozer 24hr.				1800	0600		
WT Darrah E6 24hr.				1800	0600		
7. Control Operations Hold fire within existing control lines. Scout opportunities to continue to construct lines. Provide point protection to improvements on private land.							
8. Special Instructions Do not engage in felling snags at night.							
9. Division/Group Communication Summary							
Function	Frequency	System	Channel	Function	Frequency	System	Channel
Command	Rx 170.475	King		A/G Tac	Tx/Rx 170.050	King	
	Tx 165.7500 Tone 6	NIFC					NIFC
Tactical Div/Group	Rx/Tx 166.725	King		A/G Command	Tx/Rx 166.875	King	
		NIFC					
Prepared by (Resource Unit Ldr.) Allan Kaipakoff RESL (T)		Approved by (Planning Sect. Chief) Jason Schillinger PSC1		Date 8/12/2017		Time 1500	

DIVISION ASSIGNMENT LIST		1. Branch		2. Division/Group Night / Willie				
3. Incident Name Ruth Complex		4. Operational Period Date: 8/12 - 13/2017 Time: 1800 - 0600						
5. Operations Personnel								
Operation Chief		Ron McLaughlin		Division/Group Supervisor		TBA		
Branch Director				Air Attack Supervisor No.				
6. Resources Assigned this Period								
Strike Team/Task Force/Resource Designator		Leader		Number Persons	Trans. Needed	Drop Off PT./Time	Pick Up PT./Time	
Central Lyon Brush						1800	0600	
Hells Gate 213						1800	0600	
7. Control Operations Monitor fire progression. Provide point protection to improvements on private land.								
8. Special Instructions Do not engage in felling snags at night.								
9. Division/Group Communication Summary								
Function	Frequency		System	Channel	Function	Frequency	System	Channel
Command	Rx 170.475 Tx 165.7500 Tone 6		King		A/G Tac	Tx/Rx 170.050	King	
			NIFC				NIFC	
Tactical Div/Group	R5 Tac 5 Tx/Rx 167.1125		King		A/G Command	Tx/Rx 166.875	King	
			NIFC				NIFC	
Prepared by (Resource Unit Ldr.) Allan Kalpakoff RESL (T)			Approved by (Planning Sect. Chief) Jason Schillinger PSC1			Date		Time 1500

SAFETY MESSAGE

Ruth Complex CA-SRF-000897

Night Shift 08/12/2017 1800-0600

MAJOR HAZARDS:

- **POTENTIAL FOR EXTREME FIRE BEHAVIOR.**
- **SNAGS AND HAZARD TREES.**
- **NUMEROUS DRIVING HAZARDS.**
- **STEEP TERRAIN & ROLLING DEBRIS**

EXTREME FIRE BEHAVIOR – Review “Severe Fire Behavior Potential” (IRPG page 78). Monitor current weather conditions and listen for radio updates from IMet. Weather conditions that can affect fire behavior can change quickly. Maintain LCES and continually re-evaluate. Assure that all personnel have good communications. **MAINTAIN SITUATIONAL AWARENESS!**

DRIVING – Please maintain safe speeds at all times. Drive like your life depends on it, because it does. No one should be in a hurry to get to anywhere in a vehicle. Have your headlight on and **WEAR YOUR SEAT BELTS!**

SNAGS AND HAZARD TREES– Snags are one of the biggest hazards here at this incident. If you see a hazard tree, flag it and communicate the info so the hazard is mitigated. Check the area for hazard trees when you park your vehicle, set up your tent and take a break within your division. Wear your hard hat & follow Hazard Tree Safety Guidelines (IRPG page 20).

STEEP TERRAIN and ROLLING DEBRIS— Have a plan in place for escape routes and mitigating medical emergencies over steep terrain and areas with limited access. Maintain proper spacing while working and walking. Don't work above any personnel.

6 TIPS FOR STAYING AWAKE WHILE DRIVING

- 1. Get a good night's sleep each night.** (8 hours recommended).
- 2. Learn to recognize and pay attention to the warning signs of fatigue.** Take a break if you experience wandering or disconnected thoughts, yawn repeatedly, have difficulty focusing or keeping your eyes open, or find yourself missing traffic signs, tailgating other drivers, or falling behind the pace of other traffic.
- 3. Don't count on tricks** like turning up the radio or opening the window for fresh air to keep you awake—these things will help for only a short while.
- 4. If you're planning on driving a long distance, drive during the time of the day when you are normally awake.**
- 5. Also, if possible, have someone accompany you** and talk with that person while driving. It's a good idea for your passenger to stay awake, too, so that he or she can let you know if you are showing signs of sleepiness.
- 6. On longer trips, schedule a break** (in a safe area) every two hours or every 100 miles and stop sooner if you show any signs of sleepiness.



17. TERRAIN AND FUELS MAKE ESCAPE TO SAFETY ZONES DIFFICULT

Safety Officer: Brian Savage

Brian Savage

Ruth Complex CA-SRF-000897 - Saturday, August 12, 2017

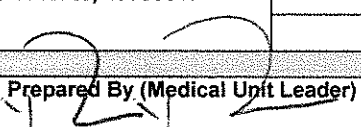
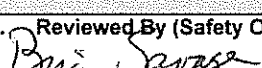
8. Location	9. Hazard	6. Control or Abatement Action (Engineering, Administrative, PPE, Avoidance, Education, etc)
All	Driving & Traffic	<ul style="list-style-type: none"> ~ Practice "Defensive Driving" techniques traveling on all roads and city streets, mitigation strategy includes: ~ Use spotters when backing ~ Honk horn to alert personnel when backing ~ Always use headlights ~ Yield to pedestrians and bicycles ~ Observe posted speed limits ~ Follow 3 second rule of following distance when driving ~ Use chock blocks, turn wheels into hill ~ Seat Belts are mandatory ~ No texting while driving
All	Air Operations	<ul style="list-style-type: none"> ~ Follow "Aviation Watch-Out Situations" in IRPG. ~ Don't plan exclusively on air resources for medical transport or resupply. Visibility may be impaired. Have a backup plan. ~ Refer to IRPG for directing bucket drops. ~ Ensure positive communication with all air resources. ~ Keep personnel out of drop zones. ~ Use clear concise statements when directing aircraft. Use clock directions from pilot's perspective.
All	Hazard trees	<ul style="list-style-type: none"> ~ Follow "Hazard Tree Safety" guidelines, IRPG (2014)page 22&23 ~ Post lookouts, or use a spotter in mop-up areas with personnel ~ Don't park vehicles or take breaks in high concentrations of hazard trees ~ Establish trigger points for disengagement during high wind events ~ Post road guards when appropriate ~ Do not fall snags at night ~ Be Aware of Douglas Fir green trees that have root rot and may fall unexpectedly
All	Severe Weather	<ul style="list-style-type: none"> ~ Review and follow Thunderstorm Safety guidelines in IRPG (2014) pg. 21 ~ Observe 30/30 Rule for lightning safety, IRPG (2014)pg.21 ~ "Trigger Points" to withdraw should be set by supervisors utilizing the 30/30 criteria mentioned above and ensure all know rally site ~ Use "Risk Management" process to determine retreat criteria and actions ~ Carry rain gear and extra food and water if weather limits retreat to ICP ~ Post lookouts, listen for weather updates by (IMET) ~ Stay out of dry creek beds and gullies during rain/hail/lightning events ~ Avoid walking in areas with rock, and loose debris during storm events
All	Fireline Hazards	<ul style="list-style-type: none"> ~ Do not work directly above or below personnel during mop-up operations ~ Watch for falling and rolling debris on steep slopes ~ Alert crew personnel of rolling debris by yelling to affected individuals ~ Position debris that could roll vertically on slope ~ Watch for weakened trees that may pose danger or fall ~ Scout areas for mop up prior to work ~ Identify burning stumps that have roots affected by fire and may cave in ~ Wear appropriate PPE correctly ~ Use correct tool for task assigned

All	Heavy Equipment Operations	<ul style="list-style-type: none"> ~ Ensure communications are established with operators ~ Use hand signals if other communications are unavailable ~ Maintain a 50'-100' exclusion area around equipment ~ Use a spotter when backing
All	Night Operations	<ul style="list-style-type: none"> ~ Maintain high visibility in work area and wear vest while in roadway. ~ Use glow sticks to mark hazards. ~ Ensure personnel have a personal light (headlamp) ~ Watch for signs of fatigue ~ Take breaks away from areas of known hazards
All	Heat Related Illness (HRI) & Dehydration	<ul style="list-style-type: none"> ~ Drink Fluids throughout operational period ~ Use buddy system to monitor personnel of heat related and fatigue issues ~ Follow work / rest guidelines ~ Take Frequent breaks, minimum of 10 minutes every hour ~ Recognize symptoms of HEAT RELATED ILLNESS which include <ul style="list-style-type: none"> o Lack of energy o Headaches, dizziness o Lack of rest o No hunger, poor eating habits o Hot skin, and lack of sweating
All	Communications	<ul style="list-style-type: none"> ~ Maintain communication with aviation resources, and suppression organization. ~ Ensure all know frequency and protocol for contacting resources ~ Utilize the ICS 205
All	Environmental Hazards	<ul style="list-style-type: none"> ~ Be alert for snakes, watch footing and hand placement around rocks ~ Check yourself for ticks, watch for bees and other insects that bite ~ Be alert for bears, cougars, and other wildlife ~ Poisonous plants - identify plants and avoid; Change and wash clothing and shower frequently
All	Steep Terrain & Rolling Debris	<ul style="list-style-type: none"> ~ Maintain 8'-10' spacing when working & walking ~ Don't work directly above any personnel ~ Evaluate necessity to send personnel in areas with limited access <p>Maintain Situation Awareness by identify hazards . Alert all personnel of new hazards and identify</p>

INCIDENT RADIO COMMUNICATIONS PLAN				1. Incident Name Ruth Complex	2. Date/Time Prepared 8/12 - 13/2017	3. Operational Period Date/Time 1800 - 0600
4. Basic Radio Channel Utilization						
Radio Type/Cache	Channel	Function	Frequency/Tone	Assignment	Remarks	
King NIFC	1	Command Forest Admin	170.4750 Rx 165.7500 Tx	All Divisions	Tone 6 Tx - 156.7 Tone 9 Tx - 100.0 Horse Ridge Kettenpom	
King NIFC	2	R5 Tac 5	167.1125	Willie		
King NIFC	3	Tac A	166.725	Duchman Division A		
King NIFC	4	Tac B	166.775	Dutchman Divison Z		
King NIFC	5	Tac R5 Project	168.6625	Burn Group		
King NIFC	6	Air to Ground Command	166.875	All Divisions		
King NIFC	7	Air to Ground Tac	170.05	All Divisions		
King NIFC	8	R5 Tac2	168.2	IA		
King NIFC	9	Air Guard	168.625	All Divisions	Tone 1 Tx 110.9	
King NIFC	10	CALCORD	156.075	All Divisions	Tone 6 Tx & Rx 156.7	

5. Prepared by (Communications Unit)

MEDICAL PLAN

1. Incident/Project Name				2. Operational Period							
Ruth Complex				Date/Time 08/12-13/2017 1800-0900 NIGHT							
2. Aid Station											
Name		Complete Address		Phone		Advanced Life Support (ALS) Yes No					
Medical Unit		Ruth Complex ICP				XX					
3. Ambulance Services											
Name		Complete Address		Phone		Advanced Life Support (ALS) Yes No					
City Ambulance Service – City 5		Ruth Complex ICP 600 Van Duzen Rd. Mad River CA, 95526		707-442-4553		XX					
Southern Trinity Area Rescue		153 A Van Duzen Rd. Mad River, CA		707-574-6421		XX					
4. Air Ambulance Services											
Name		Phone		Type of Aircraft & Capability							
KRN H407		707-726 -1266		B205A++ Hoist (Scotts Valley-24 Hr.)							
CAL FIRE H102 Day Hoist		707-726-1266		B205A++ Hoist							
CHP H14/H16 Day Hoist		530-242-3210		A Star B3 Hoist							
PHI Med 43/REACH		800-597-9571		EC 135 IFR/NVG B407 NVG							
5. Hospitals											
Name Complete Address		GPS Datum – NAD 83 Coordinate Standard Degrees Decimal Minutes DD° MM.MMM' N - Lat DD° MM.MMM' W - Long		Travel Time Air Gnd		Phone		Helipad Yes No		Level of Care Facility	
		Lat:	N 40 47.03		20 Min	2.5 HRS	707-269-4250 ext. 7020 707-442-8646		X		
Long:	W 124 08.80										
VHF:											
St Joseph Hospital 2700 Dolbeer St Eureka, CA 95501		Lat:	N 40 35.10		30 Min	3 HRS	530-244-5353 530-243-4042		X	<input type="checkbox"/>	
Shasta Regional Medical Center 110 Butte St. Redding, CA 9600		Long:	W122 23.28								
		VHF:									
Redwood Memorial Hospital 3300 Renner Dr. Fortuna, CA 95540		Lat:			2.5 HRS	707-725-4562		<input type="checkbox"/>	X		
		Long:									
		VHF:									
Mercy Medical Center 2175 Rosaline Redding, CA 96001		Lat:	N 40 34.33		30 Min	3 HRS	530-225-7201 530-242-4401		X	<input type="checkbox"/>	
		Long:	W 122 23.80								
		VHF:									
UC Davis Medical Center 2315 Stockton Blvd Sacramento, CA 95817		Lat:	N 38 33.28		1.5 HRS	4.5 HRS	916-734-3790 916-734-5669		X	<input type="checkbox"/>	
		Long:	W 121 27.35								
		VHF:									
6. Prepared By (Medical Unit Leader)		7. Date/Time		8. Reviewed By (Safety Officer)		9. Date/Time					
		08/12/17 1400				08/12/17 1400					

Initiate care with available resources at scene and notify DIVS when an injury occurs.

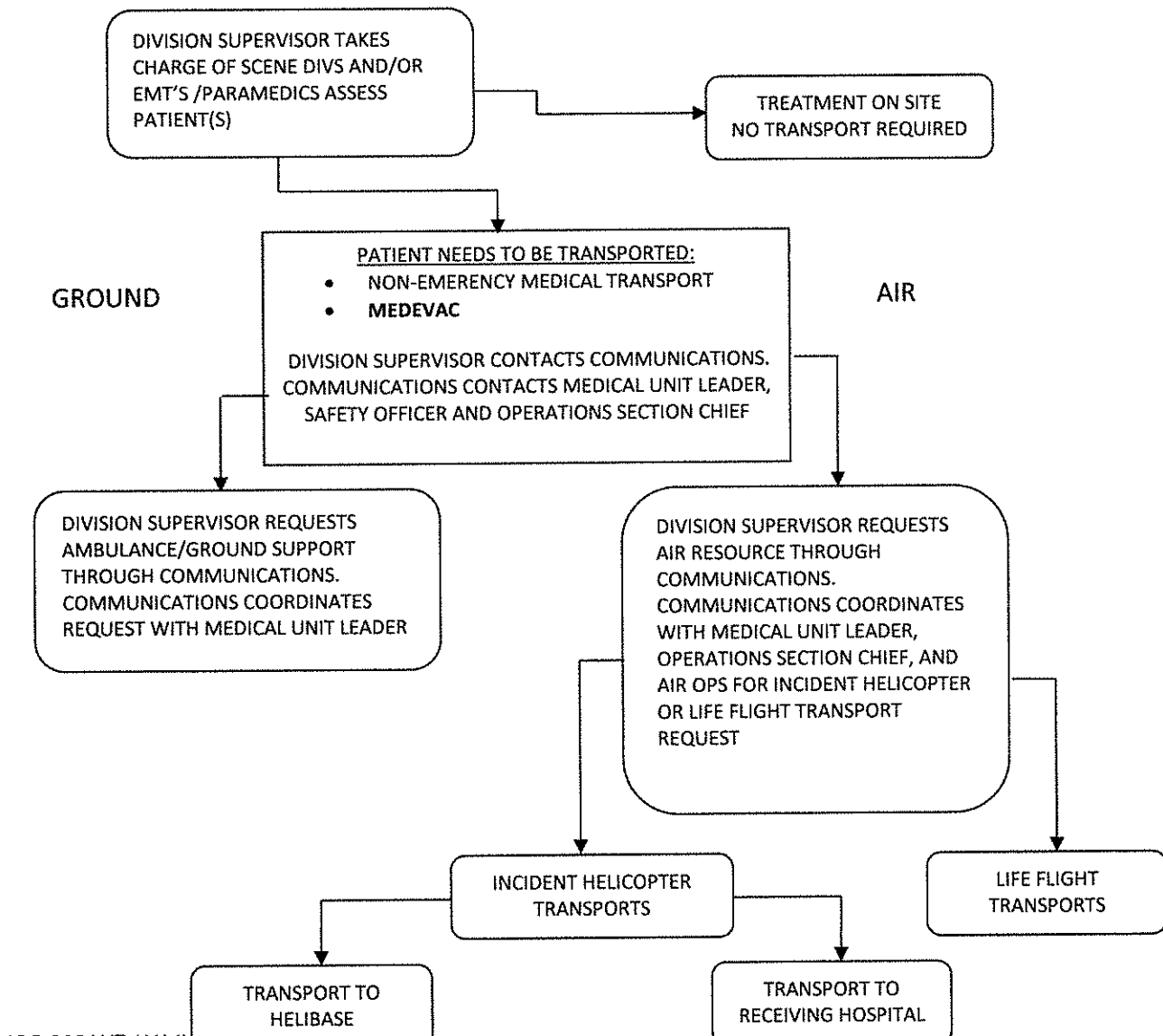
The DIVS, or designee, shall coordinate the incident and direct necessary actions. Take the following actions:

1. Determine the nature of the emergency.
2. If the emergency is a medical injury/illness, determine if the injury/illness is life threatening.
3. If the injury is life threatening, then clear designated frequency for emergency traffic.
4. Identify the on-scene point of contact by position.
5. Contact the Medical Unit Leader immediately.
6. Identify number injured, patient assessment(s) and location (geographic and/or GPS coordinates).
7. Identify on-scene medical personnel by position and last name (i.e. EMT Jones).
8. Identify preferred method of patient transport.
9. Determine any additional resources or equipment needed.

Continually evaluate the Evacuation Plan, develop contingencies in the event the first plan is not effective.

Medical Incident Report

Timely and accurate reporting is the key to getting needed resources to a medical incident. Review the Medical Incident Reporting Procedures on p 107-109 of the 2014 IRPG. In addition, the attached QR links to the 6 Minutes for Safety on the Medical Incident report. Please take a moment to review this important information with your crew.



Medical Incident Report

FOR ALL MEDICAL EMERGENCIES: IDENTIFY ON SCENE INCIDENT COMMANDER BY NAME AND POSITION AND ANNOUNCE "MEDICAL EMERGENCY" TO INITIATE RESPONSE FROM IMT COMMUNICATIONS/DISPATCH.

Use items one through nine to communicate situation to communications/dispatch.

1. CONTACT COMMUNICATIONS/DISPATCH

Ex: "Communications, Div. Alpha. Stand-by for Priority Medical Incident Report." (If life threatening request designated frequency be cleared for emergency traffic.)

2. INCIDENT STATUS: Provide incident summary and command structure.

Nature of Injury/Illness		<i>Describe the injury (Ex: Broken leg with bleeding)</i>
Incident Name		<i>Geographic Name + "Medical" (Ex: Trout Meadow Medical)</i>
Incident Commander		<i>Name of IC</i>
Patient Care		<i>Name of Care Provider (Ex: EMT Smith)</i>

3. INITIAL PATIENT ASSESSMENT: Complete this section for each patient. This is only a brief, initial assessment. Provide additional patient info after completing this 9 Line Report.

Number of Patients:	Male / Female	Age:	Weight:
Conscious? <input type="checkbox"/> YES <input type="checkbox"/> NO = MEDEVAC!			
Breathing? <input type="checkbox"/> YES <input type="checkbox"/> NO = MEDEVAC!			
Mechanism of Injury: <i>What caused the injury?</i>			
Lat/Long (Datum WGS84) <i>Ex: N 40° 42.45' x W 123° 03.24'</i>			

4. SEVERITY OF EMERGENCY, TRANSPORT PRIORITY

SEVERITY	TRANSPORT PRIORITY
<input type="checkbox"/> URGENT-RED Life threatening injury or illness. <i>Ex: Unconscious, difficulty breathing, bleeding severely, 2° - 3° burns more than 4 palm sizes, heat stroke, disoriented.</i>	Ambulance or MEDEVAC helicopter. Evacuation need is IMMEDIATE.
<input type="checkbox"/> PRIORITY-YELLOW Serious Injury or illness. <i>Ex: Significant trauma, not able to walk, 2° - 3° burns not more than 1-2 palm sizes.</i>	Ambulance or consider air transport if at remote location. Evacuation may be DELAYED.
<input type="checkbox"/> ROUTINE-GREEN Not a life threatening injury or illness. <i>Ex: Sprains, strains, minor heat-related illness.</i>	Non-Emergency. Evacuation considered Routine of Convenience.

5. TRANSPORT PLAN:

Air Transport: (Agency Aircraft Preferred)

<input type="checkbox"/> Helispot	<input type="checkbox"/> Short-haul/Hoist	<input type="checkbox"/> Life Flight	<input type="checkbox"/> Other
-----------------------------------	---	--------------------------------------	--------------------------------

Ground Transport: [Click here to enter text.](#)

<input type="checkbox"/> Self-Extract	<input type="checkbox"/> Carry-Out	<input type="checkbox"/> Ambulance	<input type="checkbox"/> Other
---------------------------------------	------------------------------------	------------------------------------	--------------------------------

6. ADDITIONAL RESOURCE/EQUIPMENT NEEDS:

<input type="checkbox"/> Paramedic/EMT(s)	<input type="checkbox"/> Crew(s)	<input type="checkbox"/> SKED/Backboard/C-Collar
<input type="checkbox"/> Burn Sheet(s)	<input type="checkbox"/> Oxygen	<input type="checkbox"/> Trauma Bag
<input type="checkbox"/> Medication(s)	<input type="checkbox"/> IV/Fluid(s)	<input type="checkbox"/> Cardiac Monitor/AED
<input type="checkbox"/> Other (i.e. splints, rope rescue, wheeled litter)		

7. COMMUNICATIONS:

Function	Channel Name/Number	Receive (Rx)	Tone/NAC *	Transmit (Tx)	Tone/NAC *
<i>Ex: Command</i>	<i>Forest Rpt, Ch. 2</i>	<i>168.3250</i>	<i>110.9</i>	<i>171.4325</i>	<i>110.9</i>
COMMAND					
AIR-TO-GRND					
TACTICAL					

*(NAC for digital radio system)

8. EVACUATION LOCATION:

Lat/Long (Datum WGS84) <i>EX: N 40 42.45' x W 123 03.24'</i>	
Patient's ETA to Evacuation Location:	
Helispot/Extraction Size and Hazards:	

9. CONTINGENCY:

Considerations: *If primary options fail, what actions can be implemented in conjunction with primary evacuation method? Be thinking ahead...*

REMEMBER: Confirm ETA's of resources ordered
Act according to your level of training
Be Alert. Keep Calm. Think Clearly. Act Decisively.

UNIT LOG	1. Incident Name Ruth Complex	2. Date Prepared	3. Time Prepared
	4. Unit Name/Designators	5. Unit Leader (Name and Position)	6. Operational Period 8/12 - 13/2017 1800 - 0600
7. Personnel Roster Assigned			
Name	ICS Position	Home Base	
8. Activity Log			
Time	Major Events		
9. Prepared by (Name and Position)			